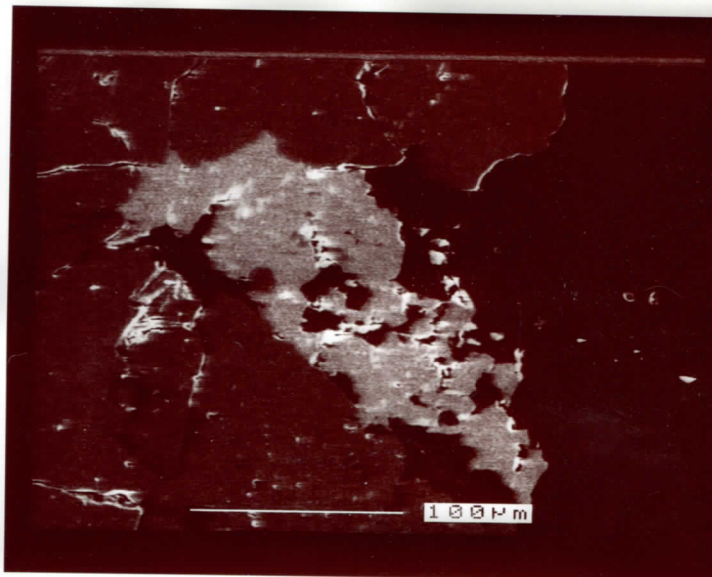
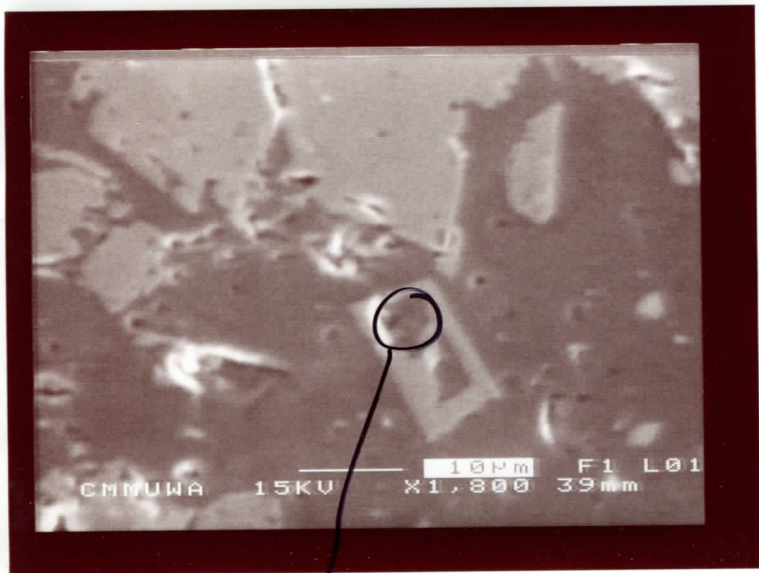
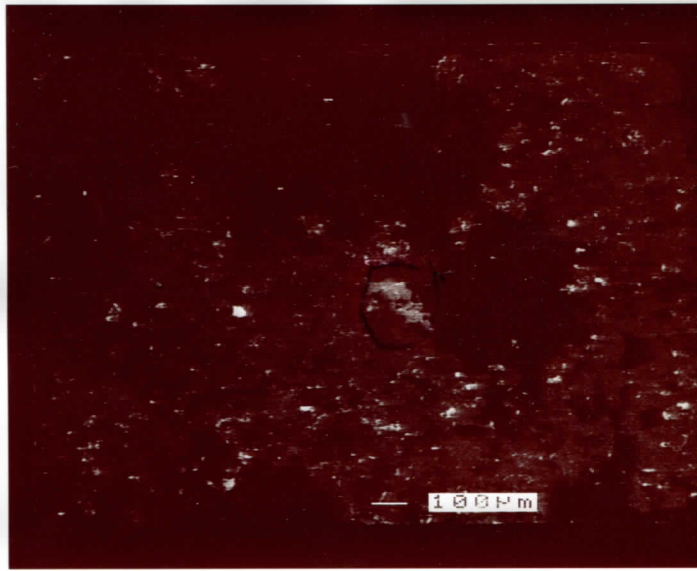
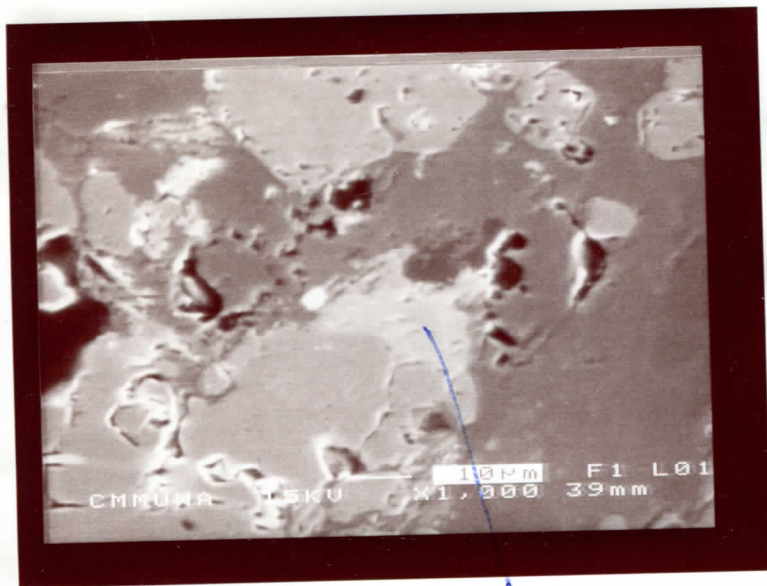


exsolving?



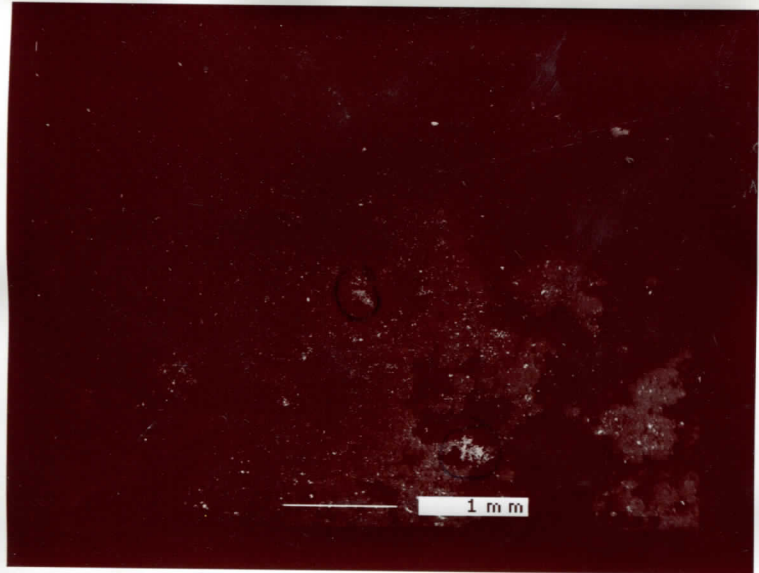
Allanite? Fe, Ca, Si, Mg



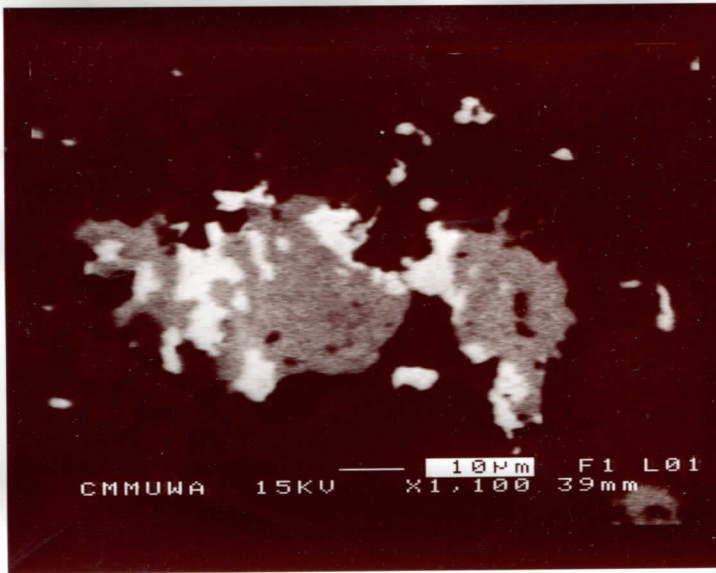
xenotime  
X=325  
Y=260

X60

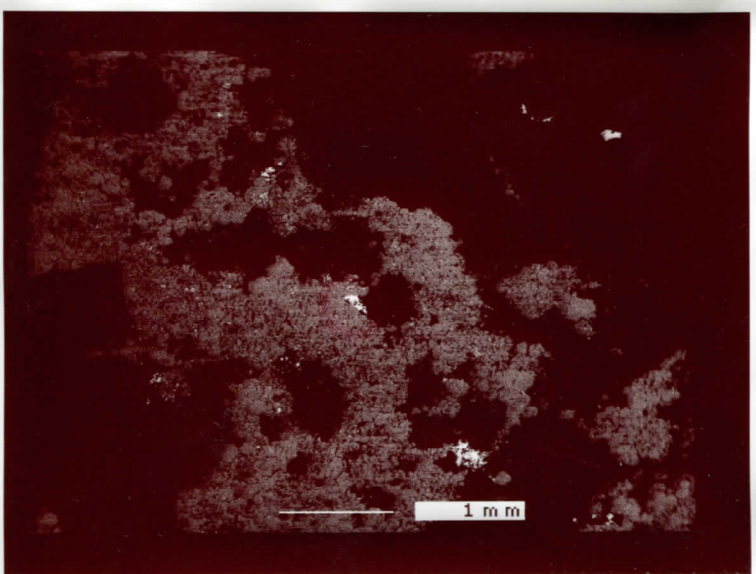




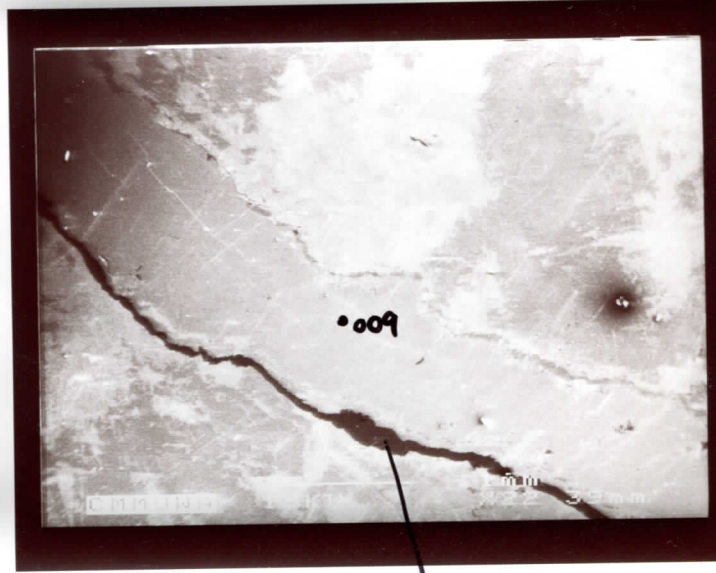
X70



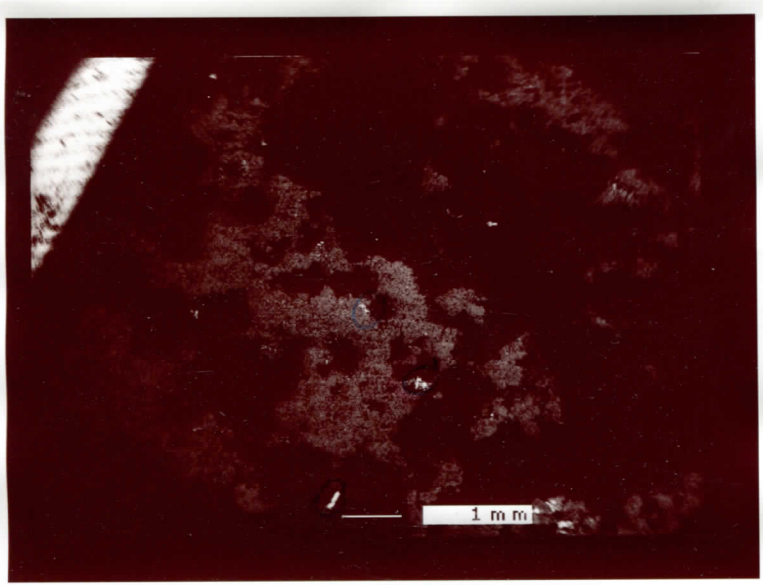
X=267  
Y=509



X20

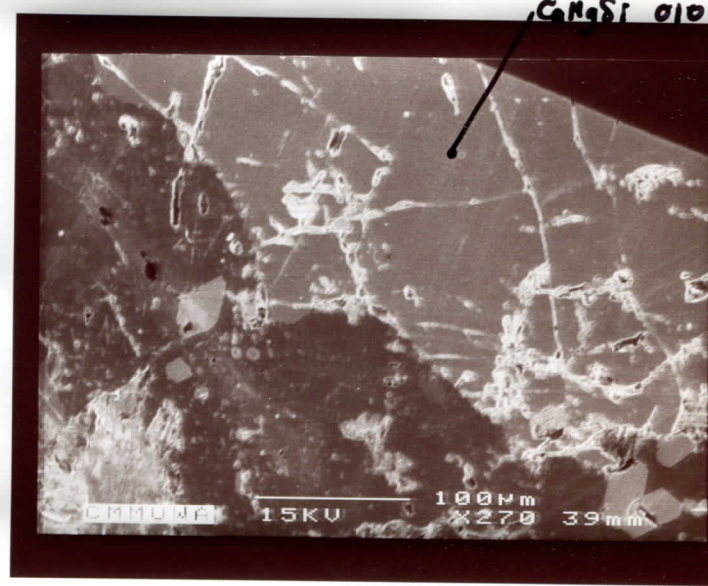


Resin

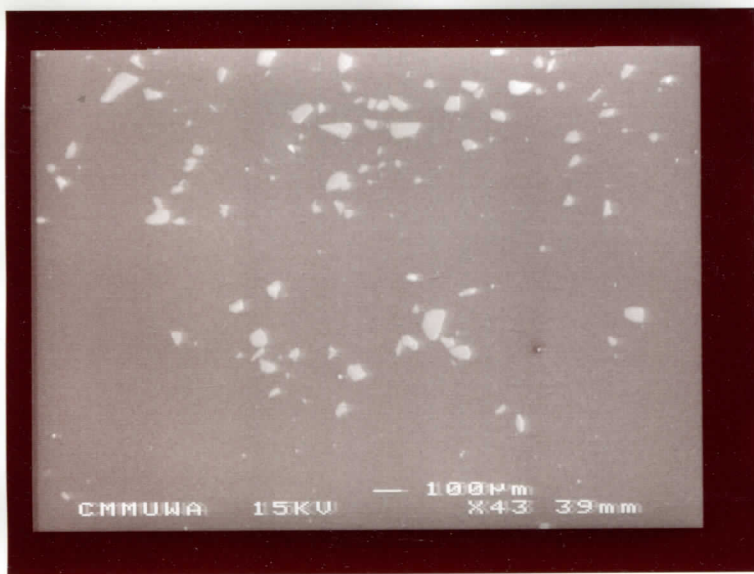
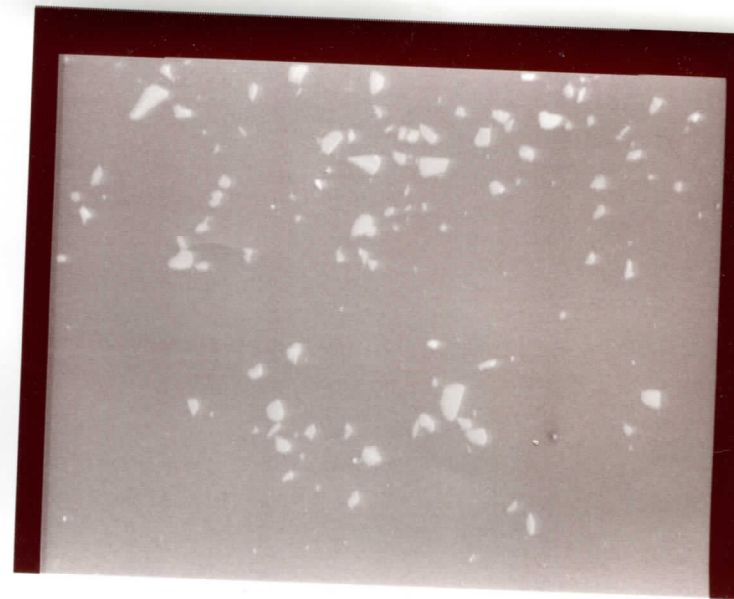
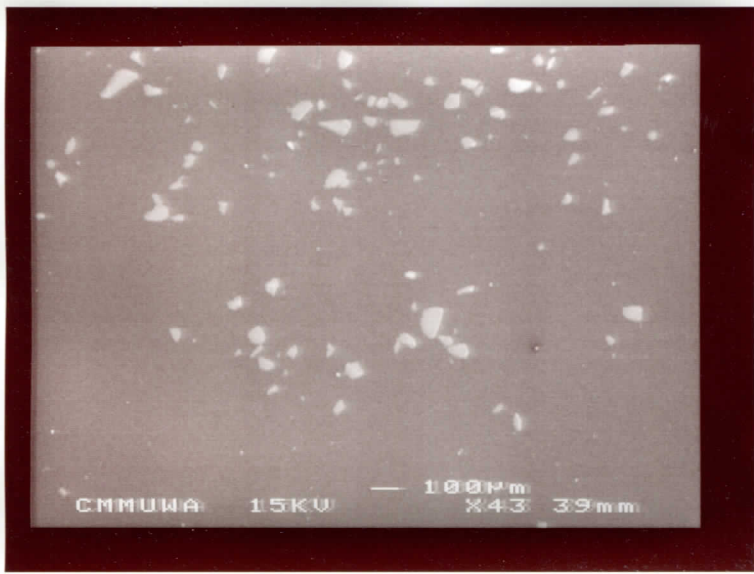
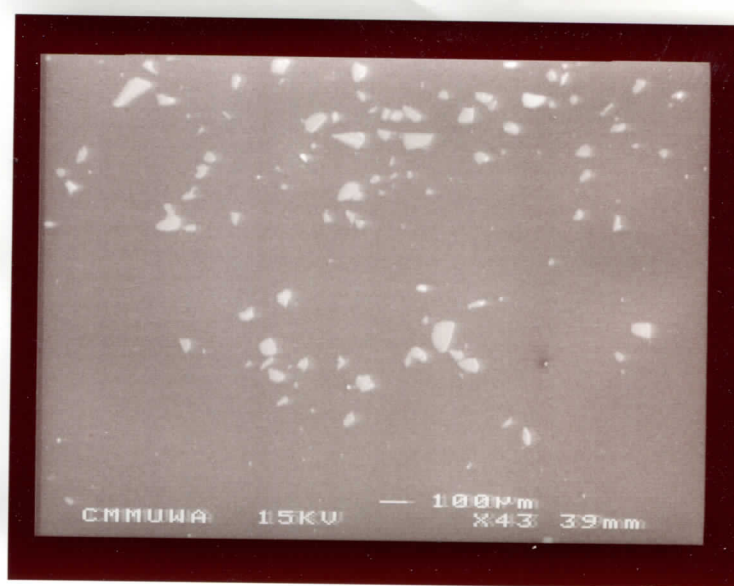


M4

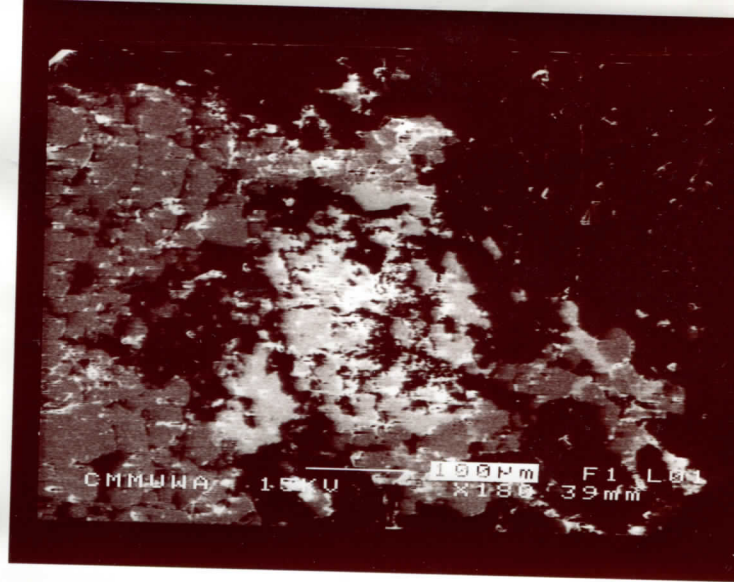
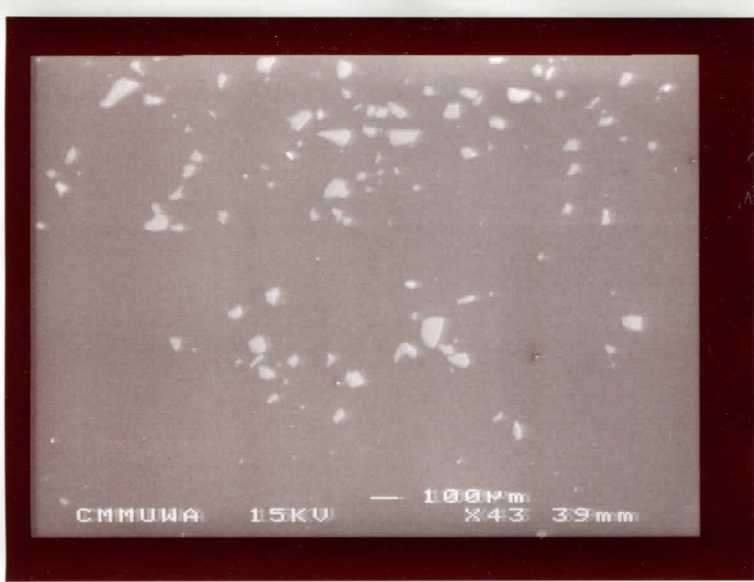
X10



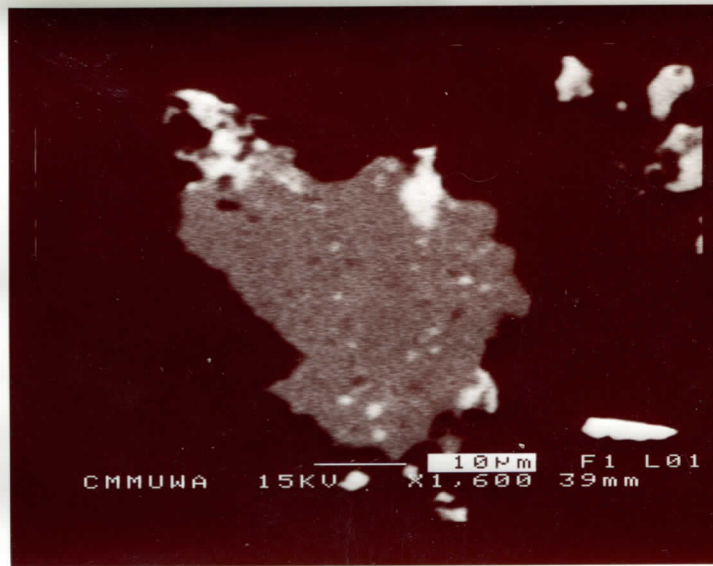
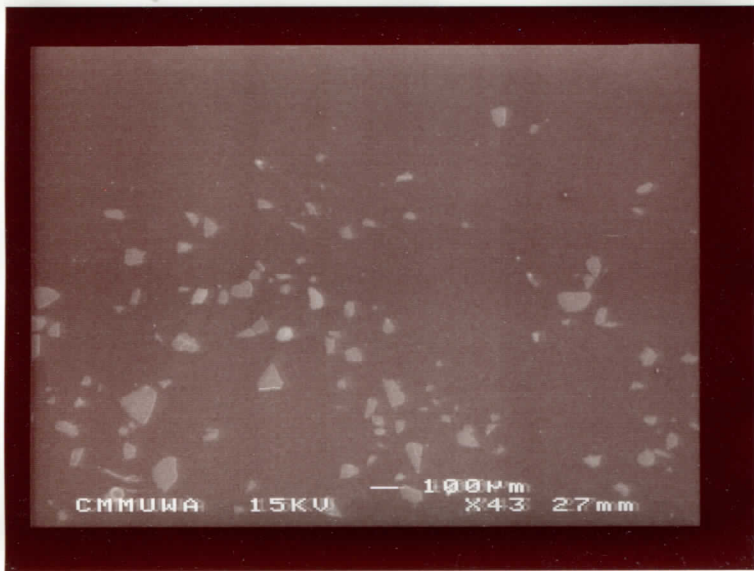
CaMgSi 010







6



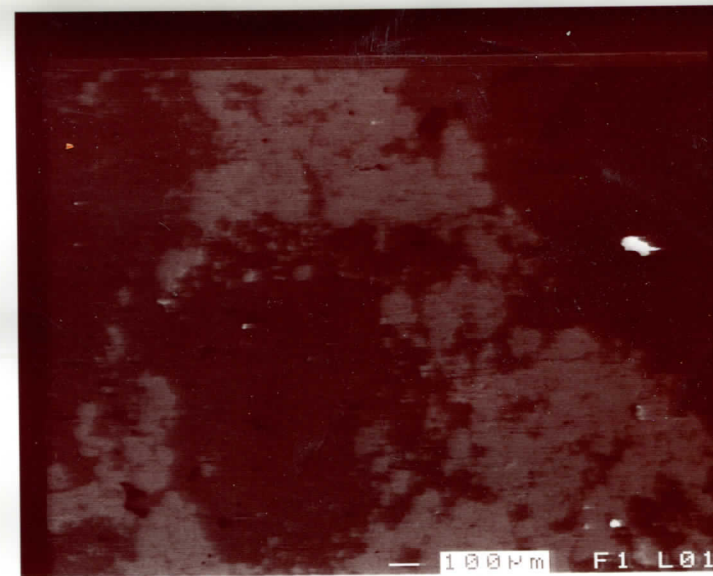
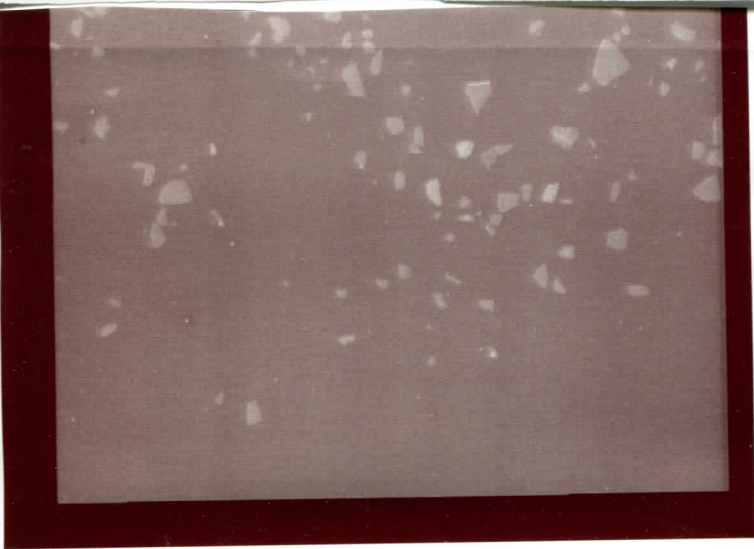
10.

grey = Y, P

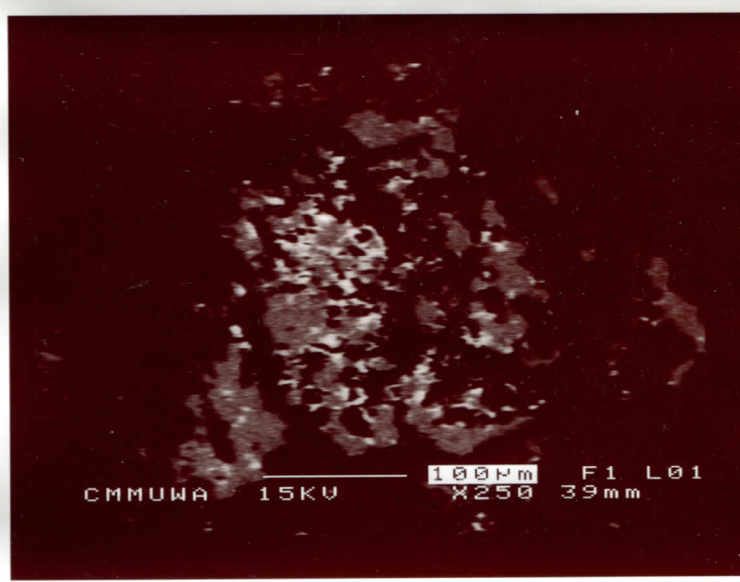
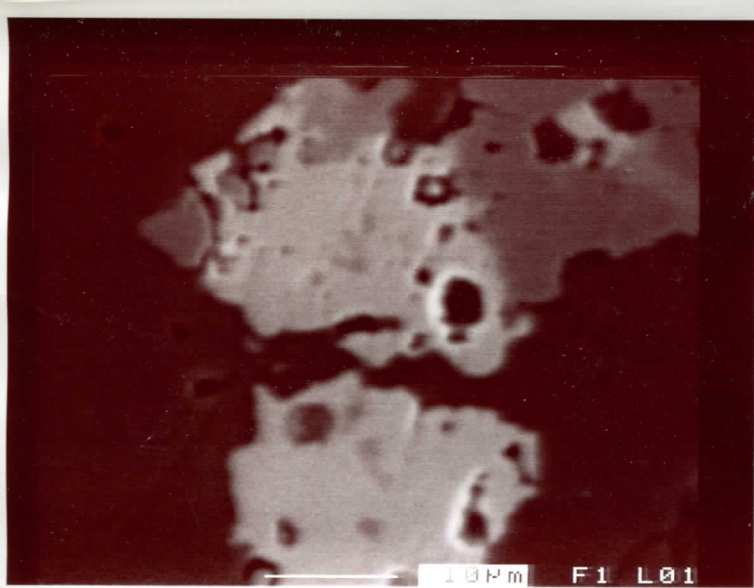
X=271

Y=114

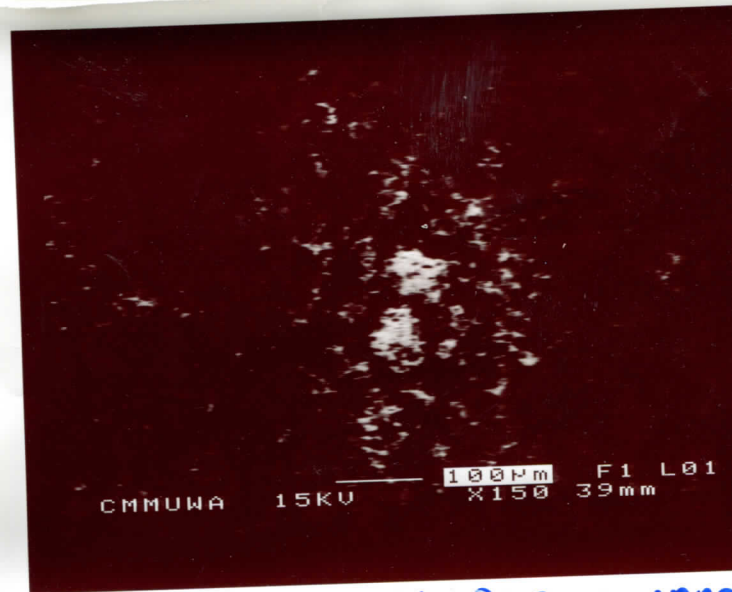
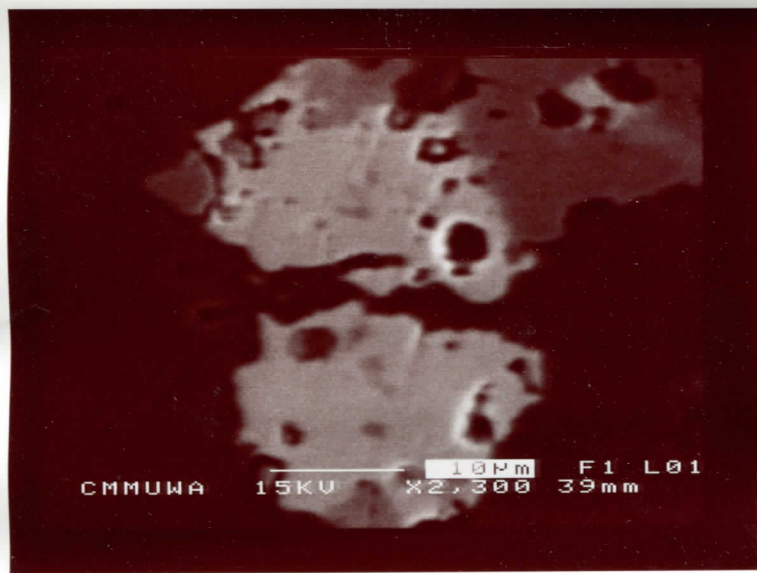
bgR



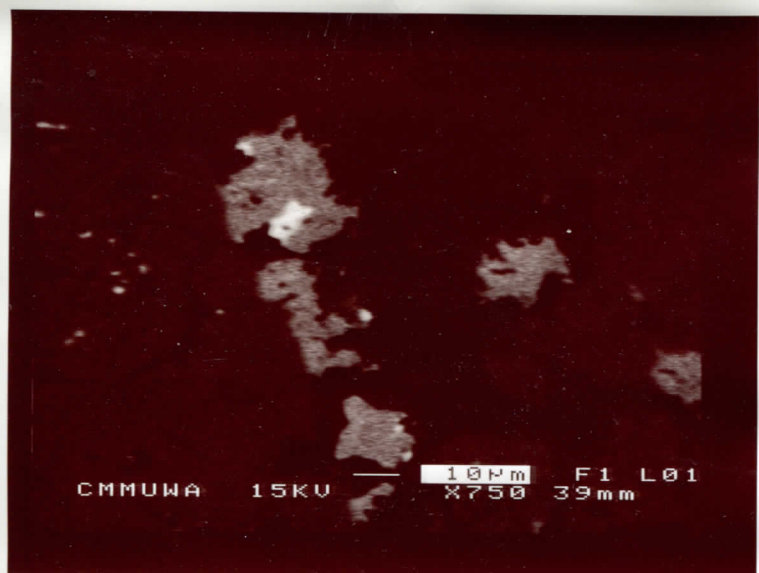




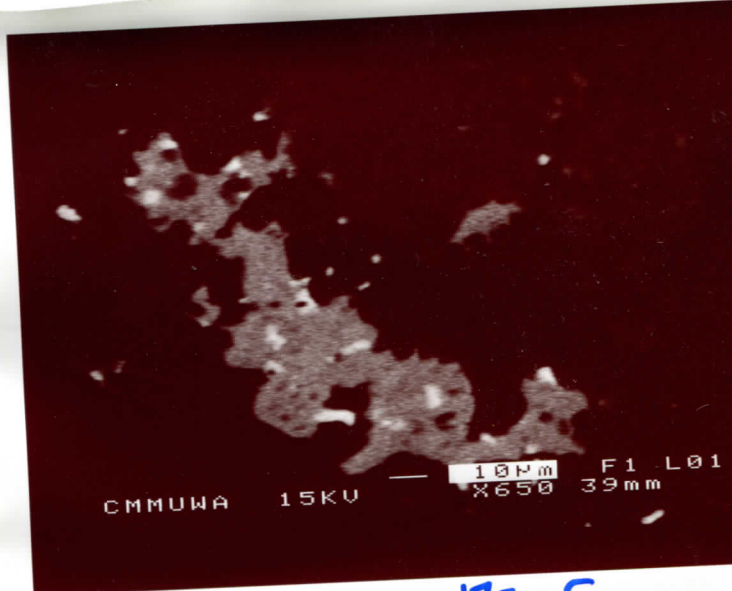
X=168.5  
Y=194



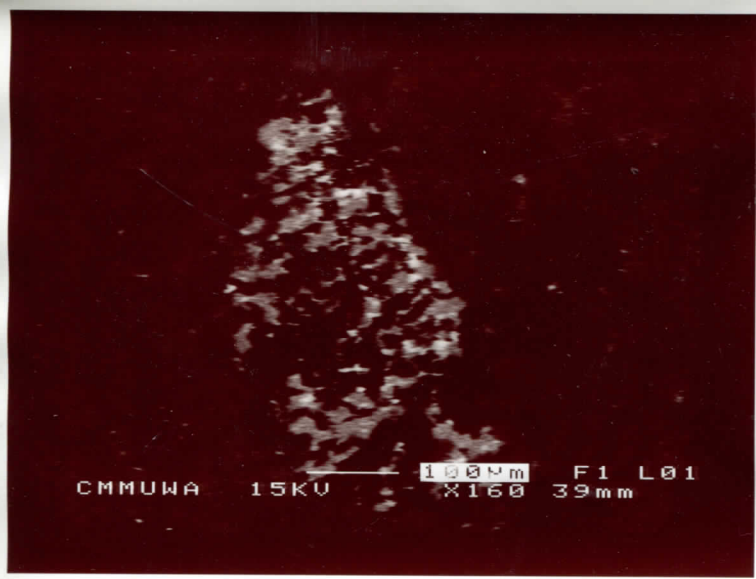
X=337 non?  
Y=287.5



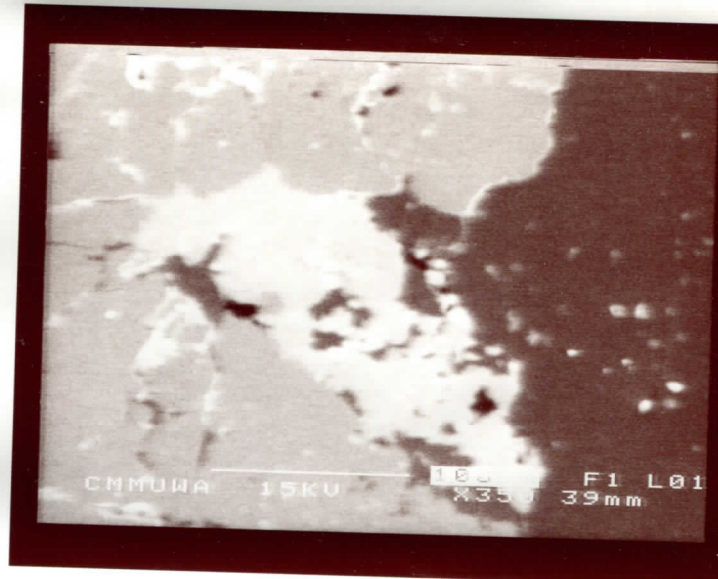
X=305  
Y=363



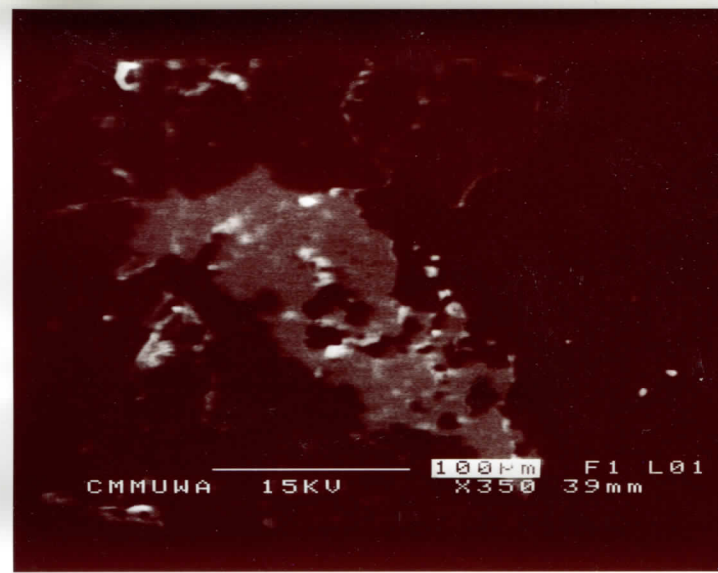
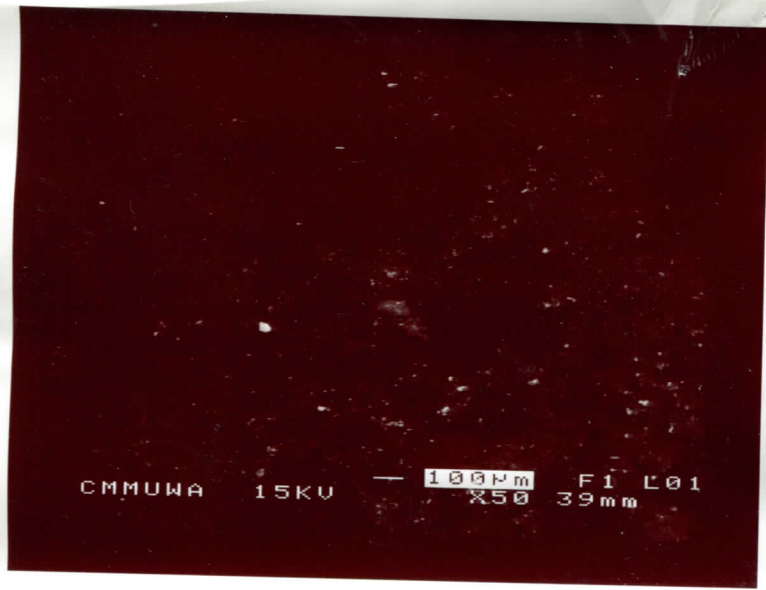
X=172.5  
Y=197.5



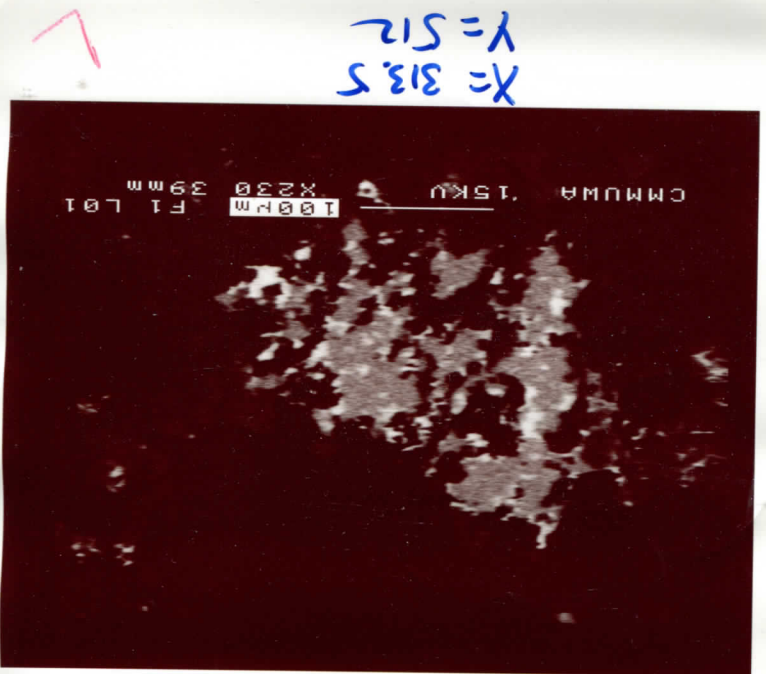
X=254.5  
Y=227



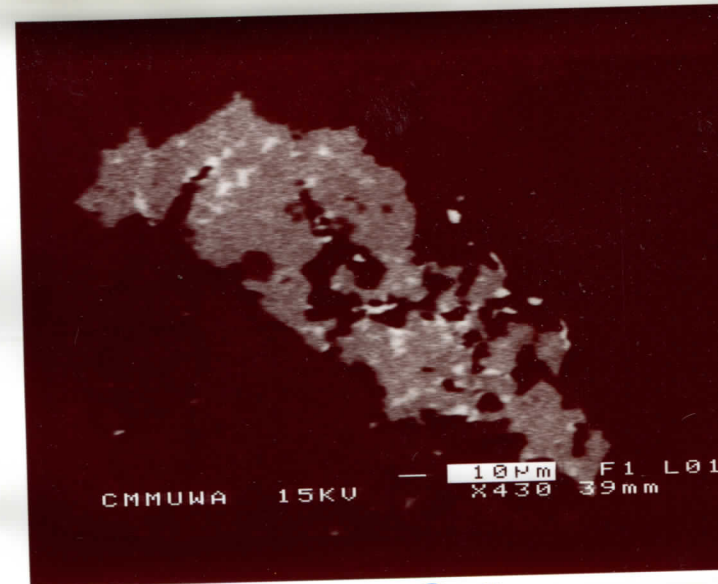
I



I

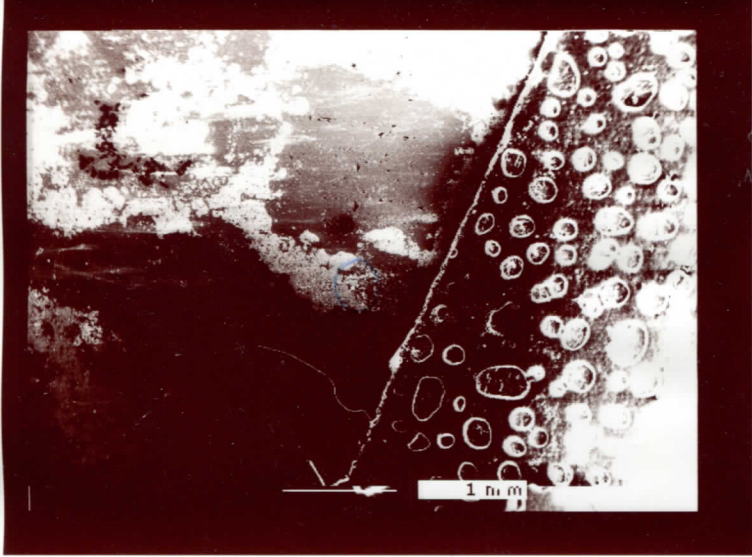


X=313.5  
Y=512

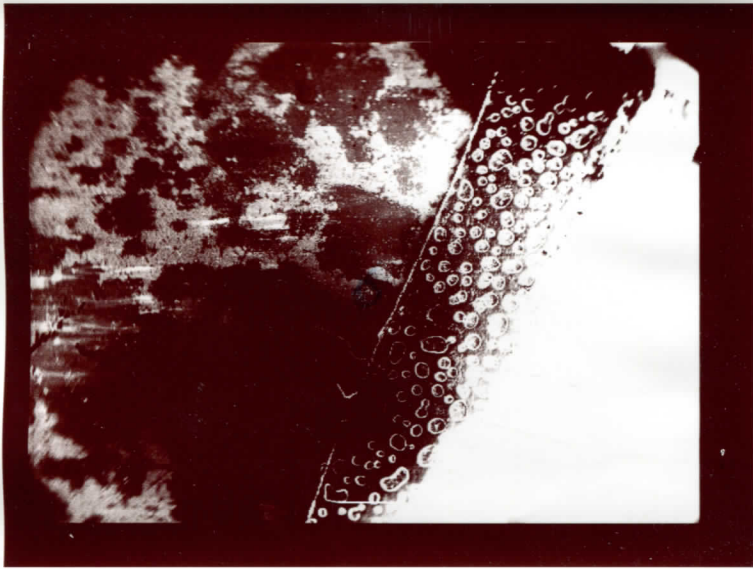
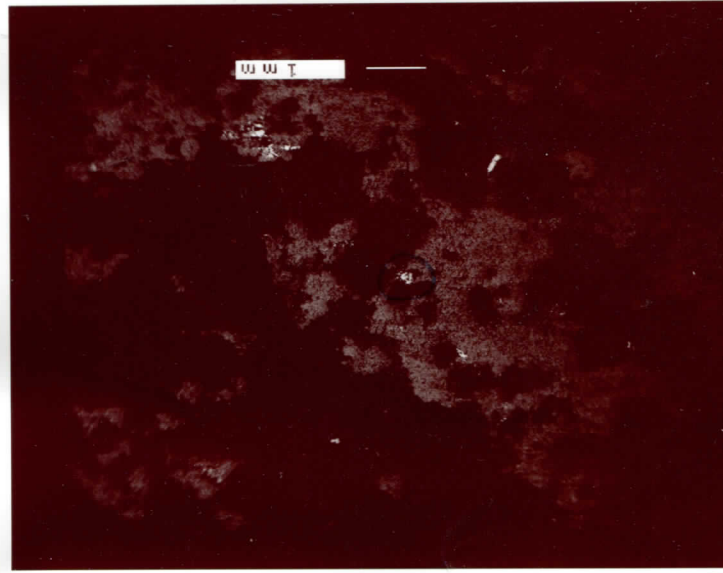


I  
X=329  
Y=503

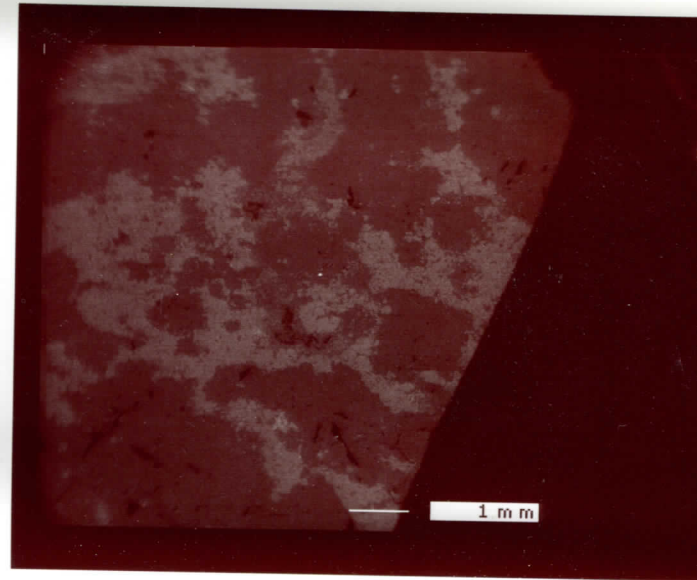




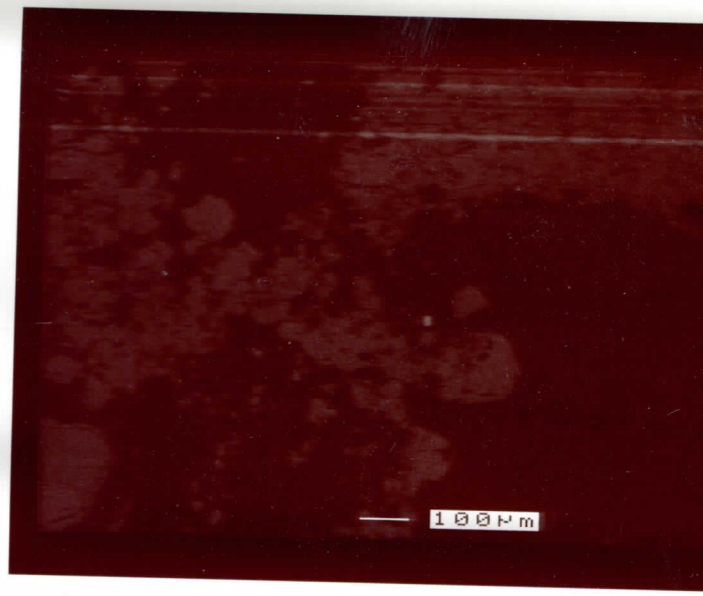
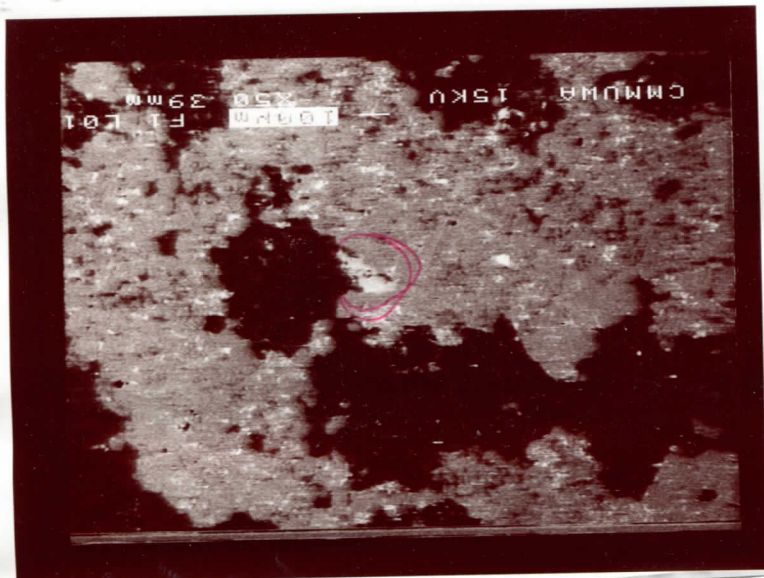
x20



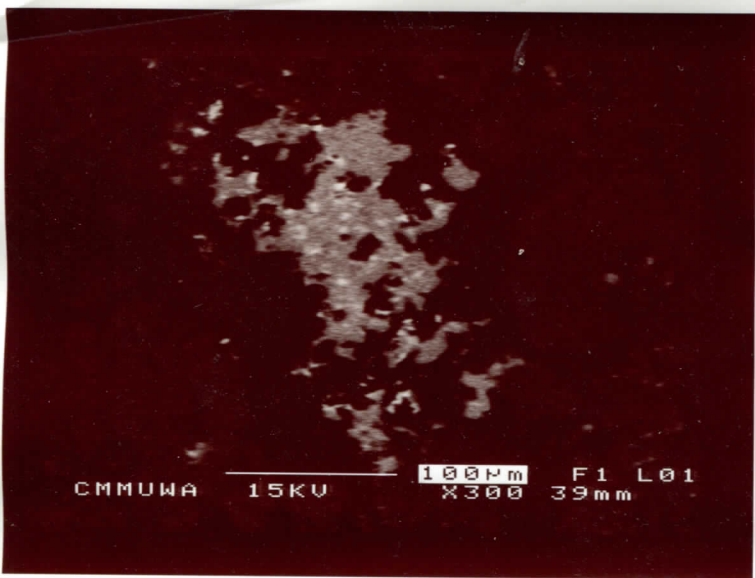
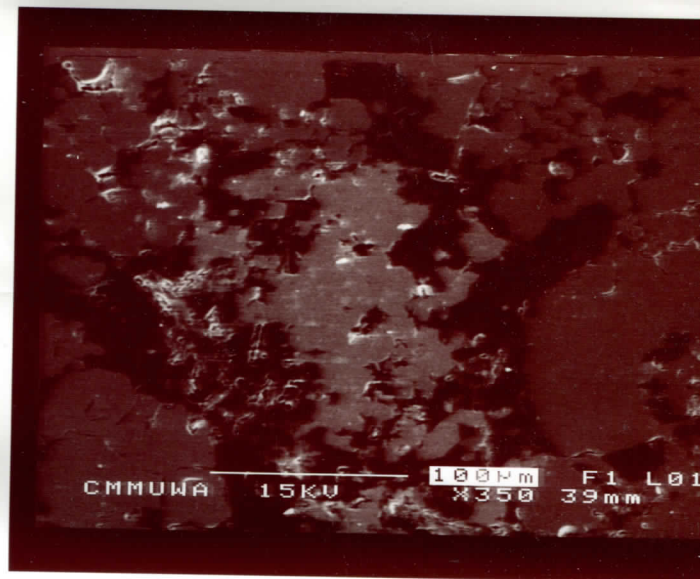
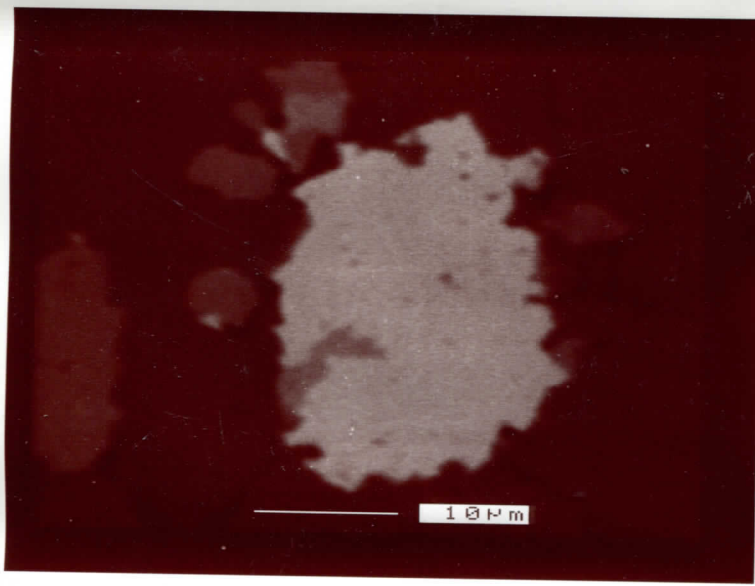
x10



I







X= 329  
Y= 418.5

A

call 4.



~~A~~

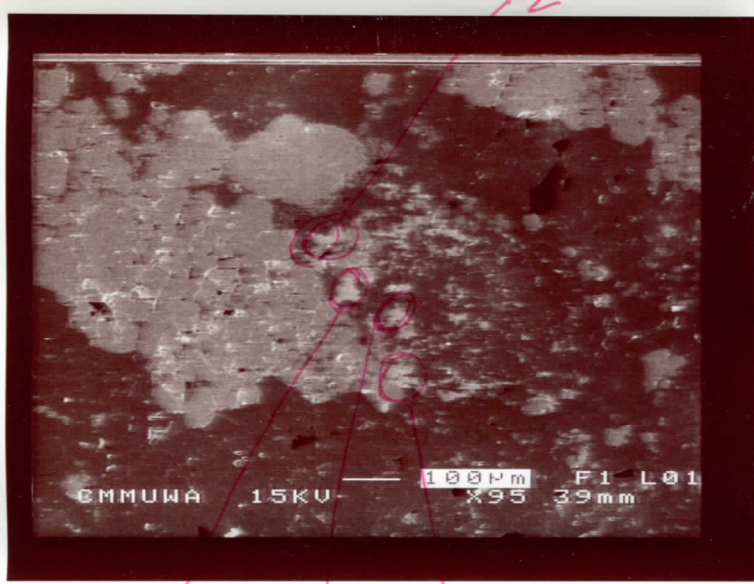
low holes

A

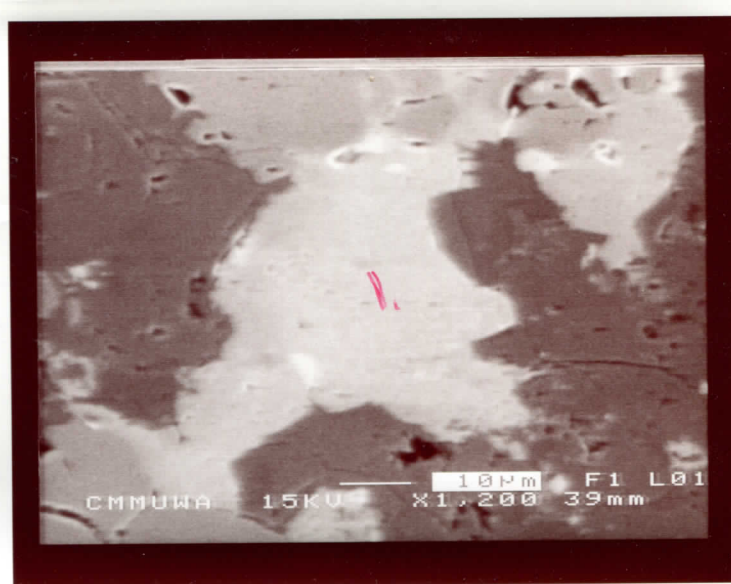
4.

3.

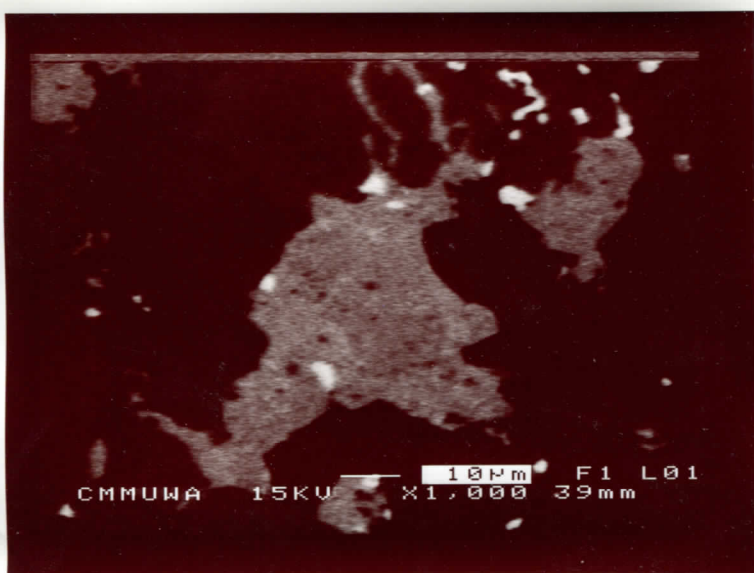




A 1 3 4 close to edge



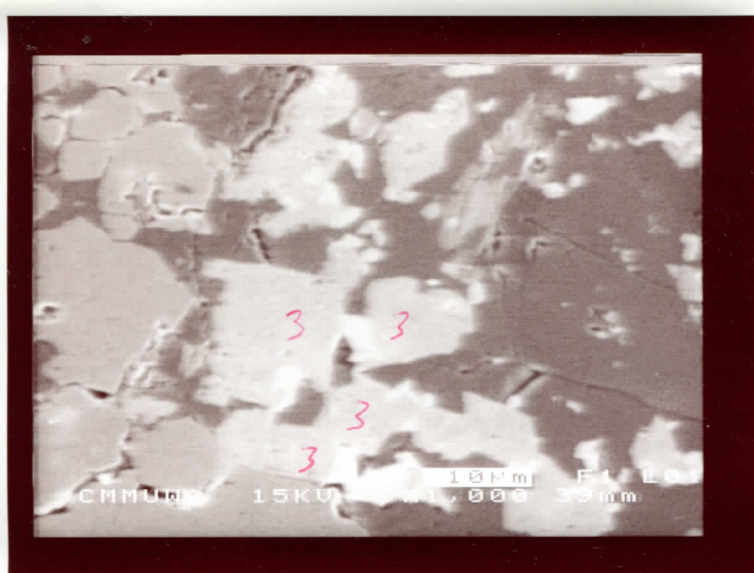
A ①



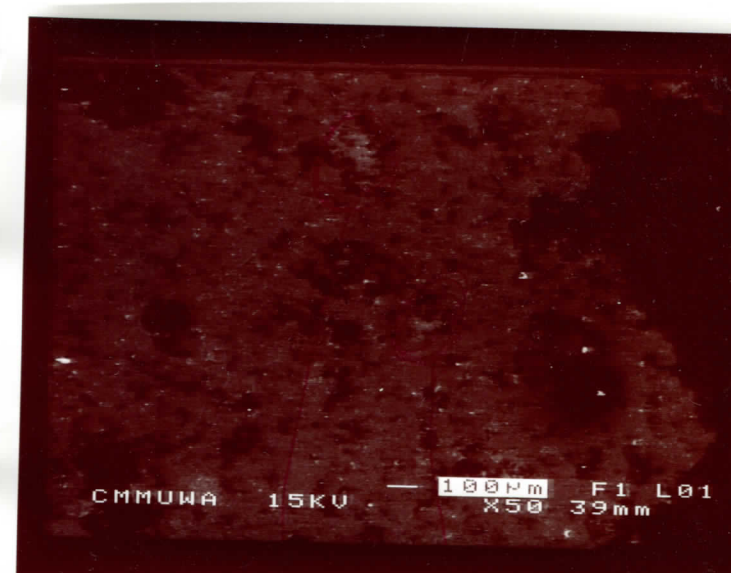
A X=148 Y=189.5 X=146 Y=179.5 lots



A 2

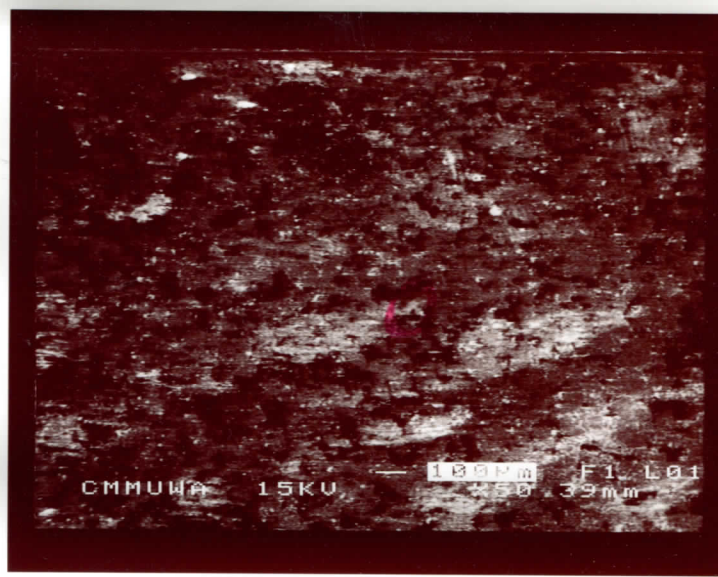
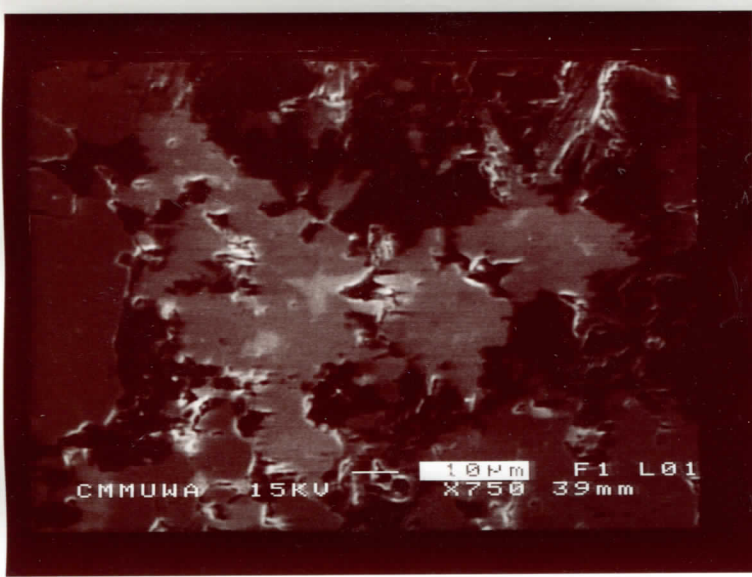


A

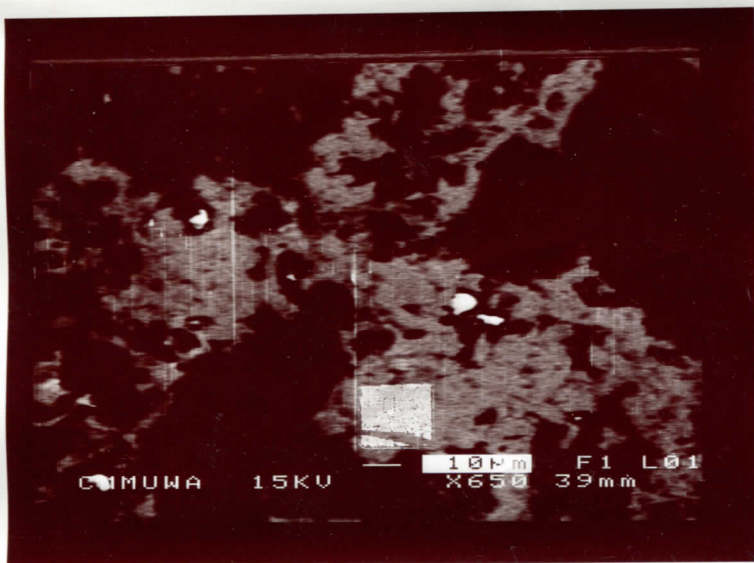


\* K try to get

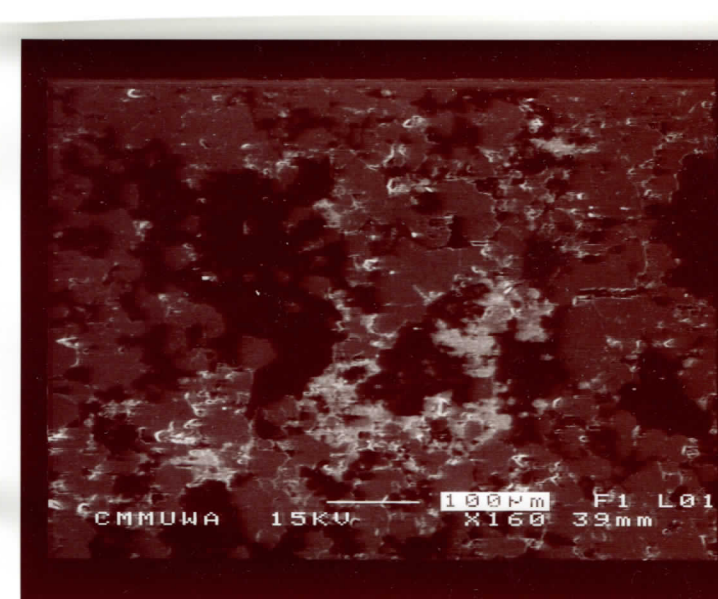




K

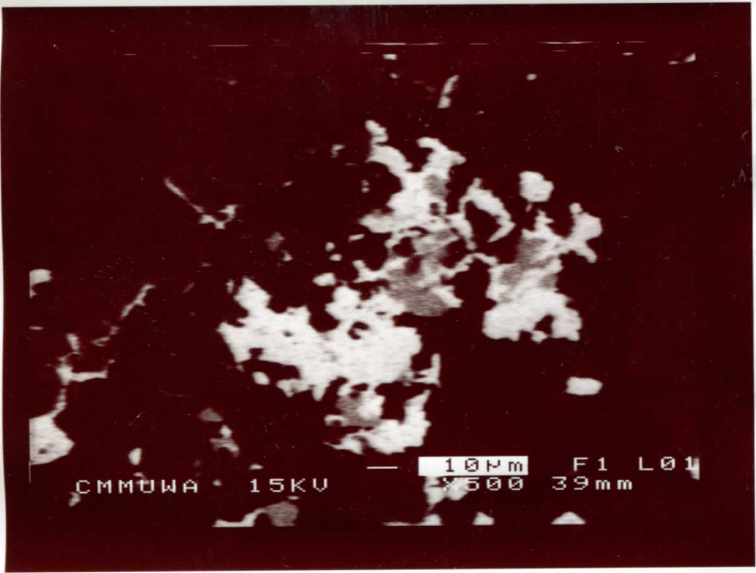


X = 339.5  
Y = 149 bgr



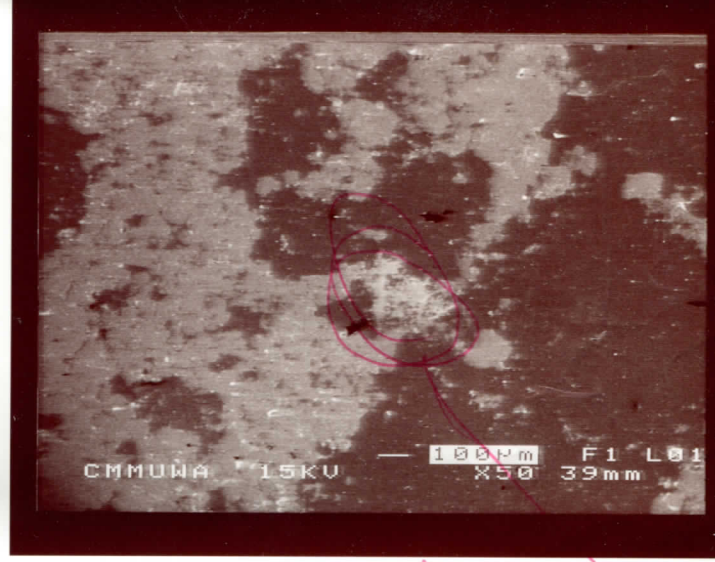
man's hole





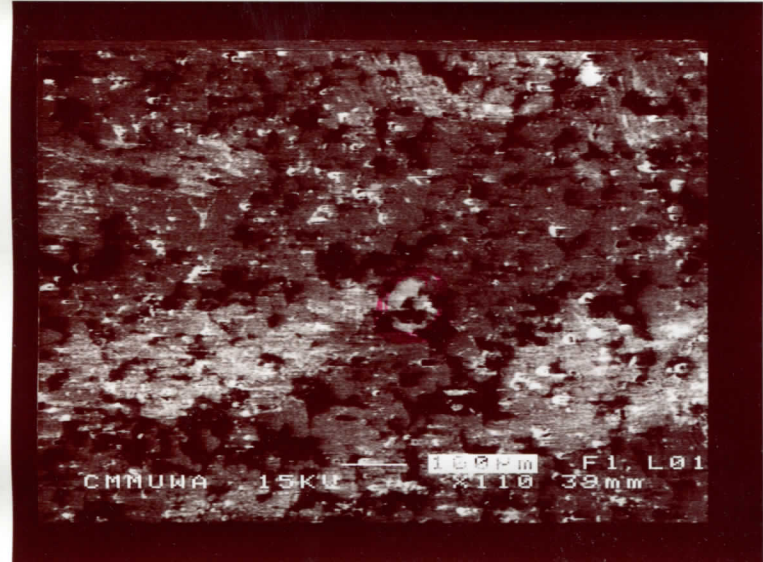
CAI

X = 335  
Y = 258

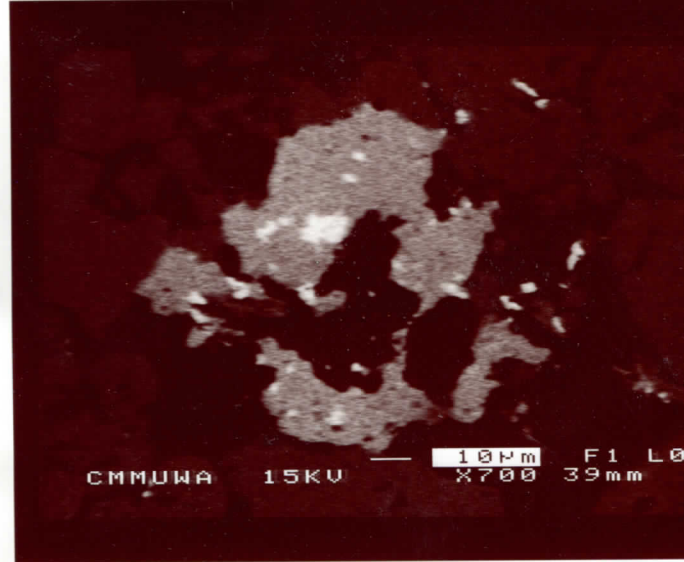


same as I

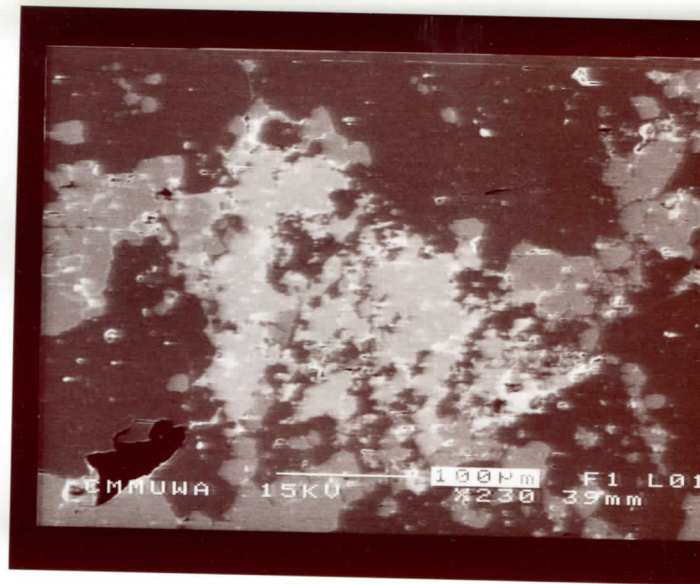
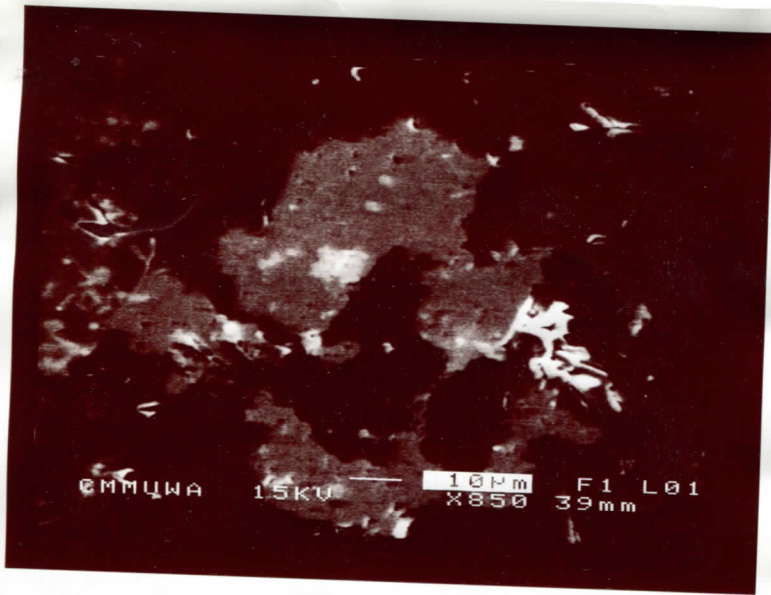
↳ this edge of slide



BCI

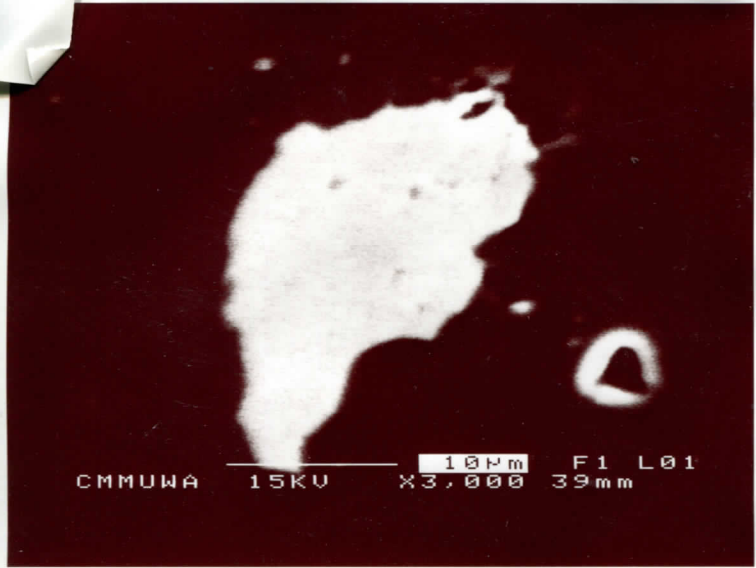


lots xeno holes X = 260  
Y = 173.5

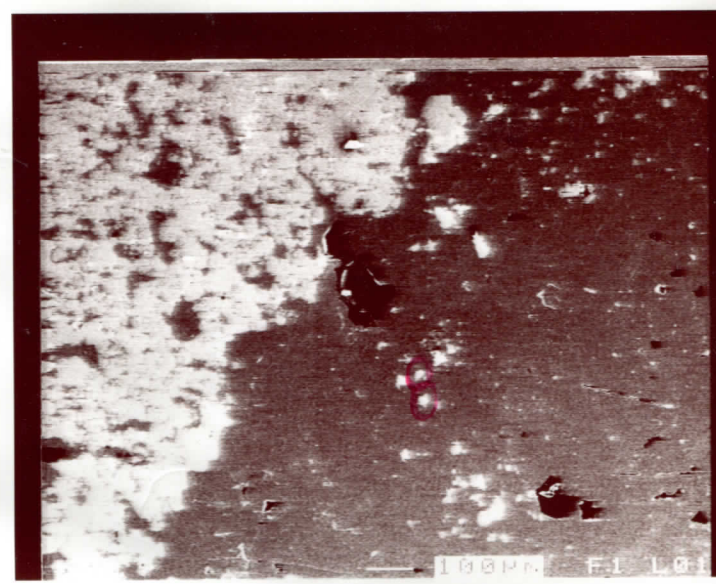


↳

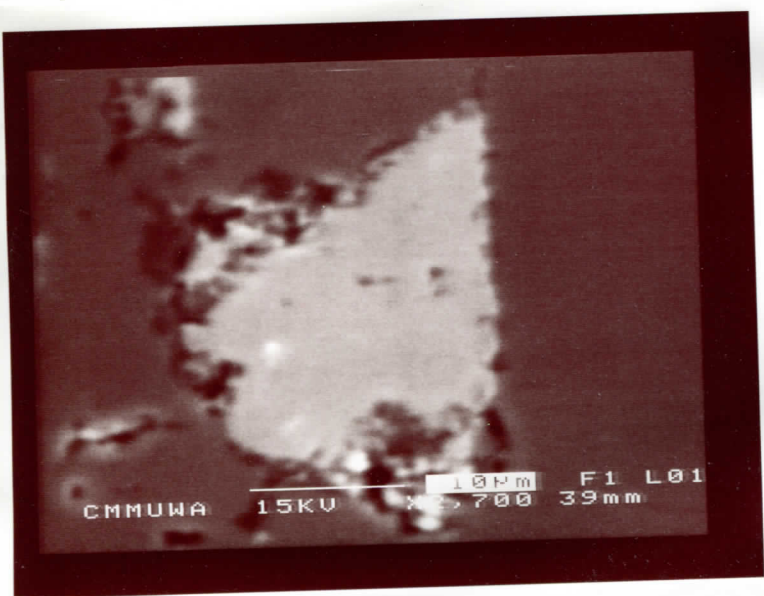




leaf 1/2 xero. e



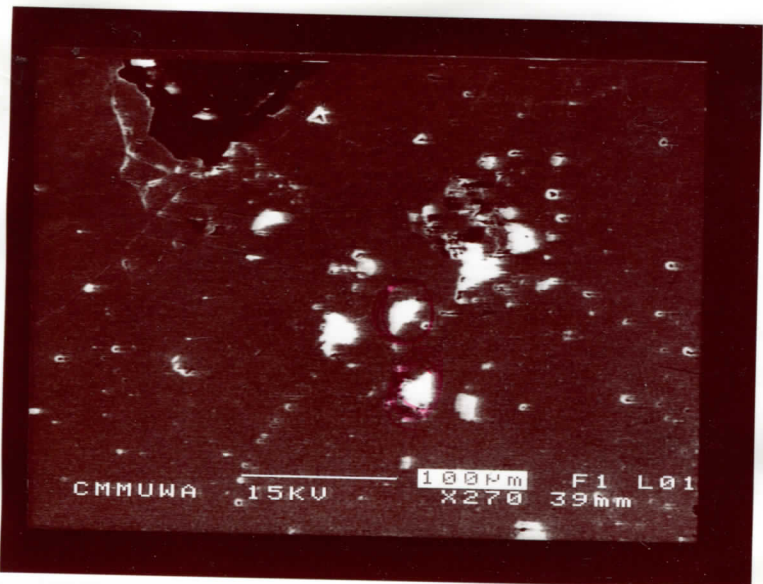
e



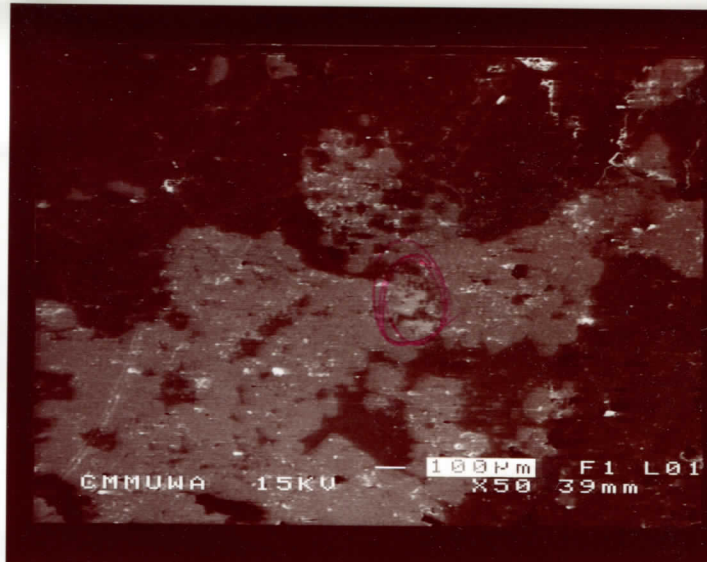
e



Handwritten text: Silica



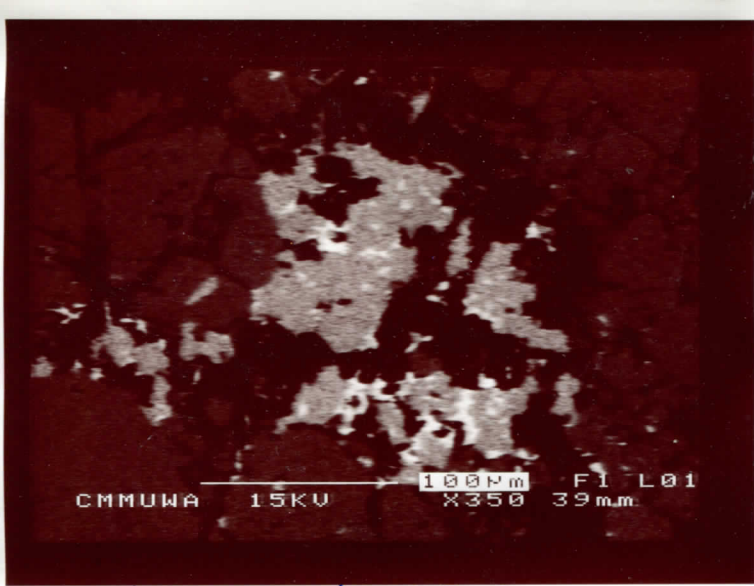
e



J

Handwritten scribble

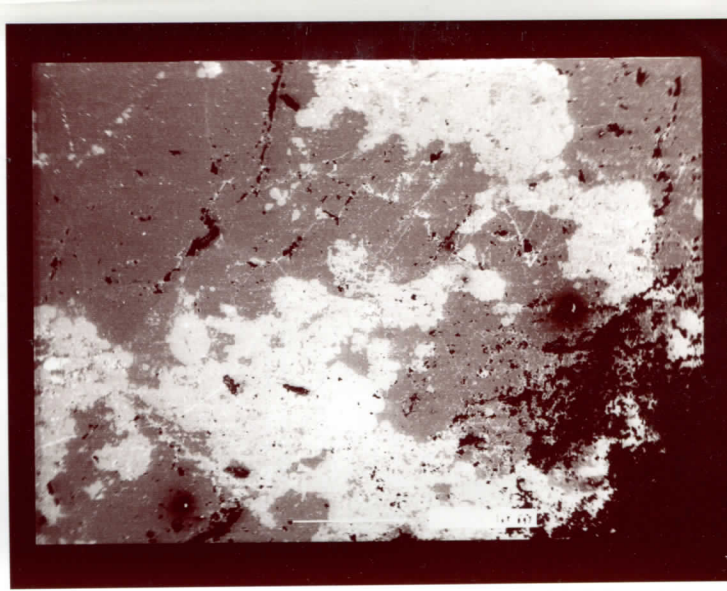




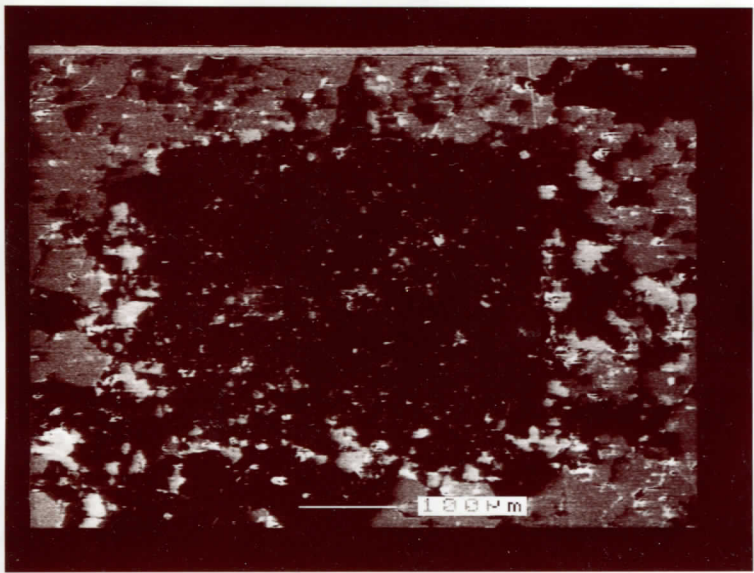
260.5  
513

X=252.3  
Y=2510

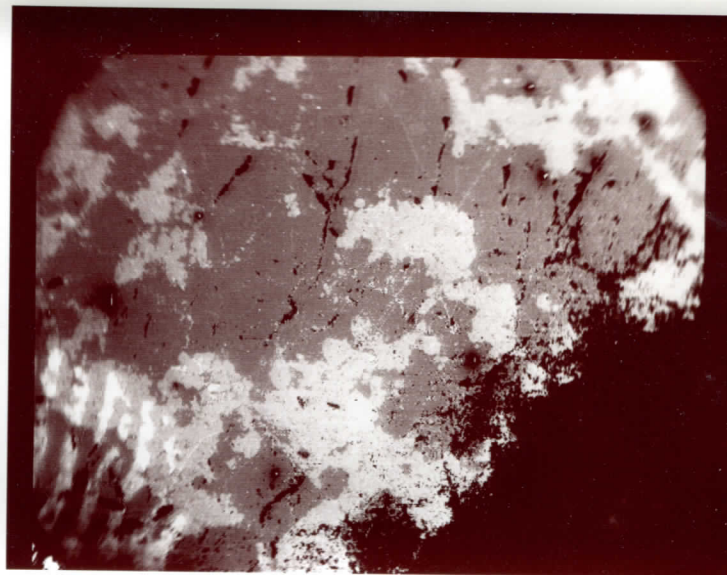
J



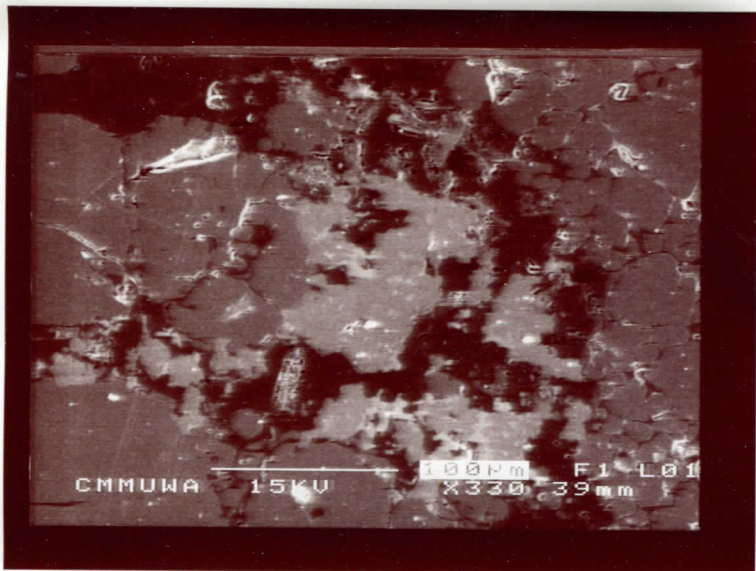
X20



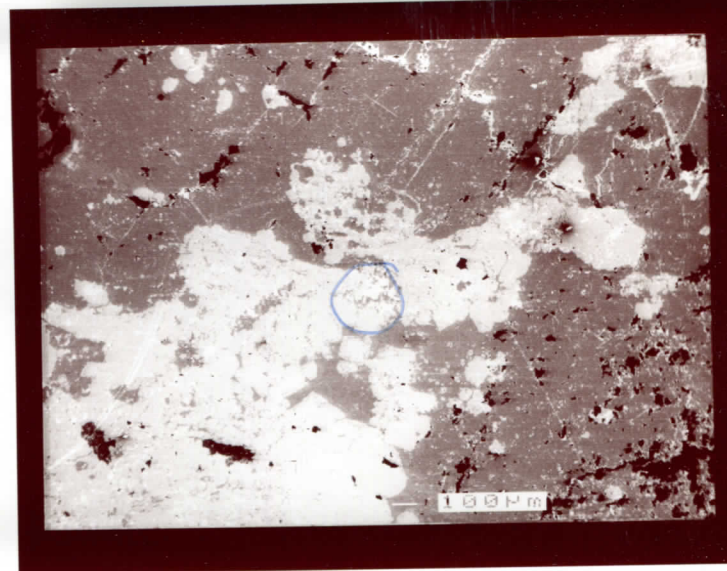
X670



X10

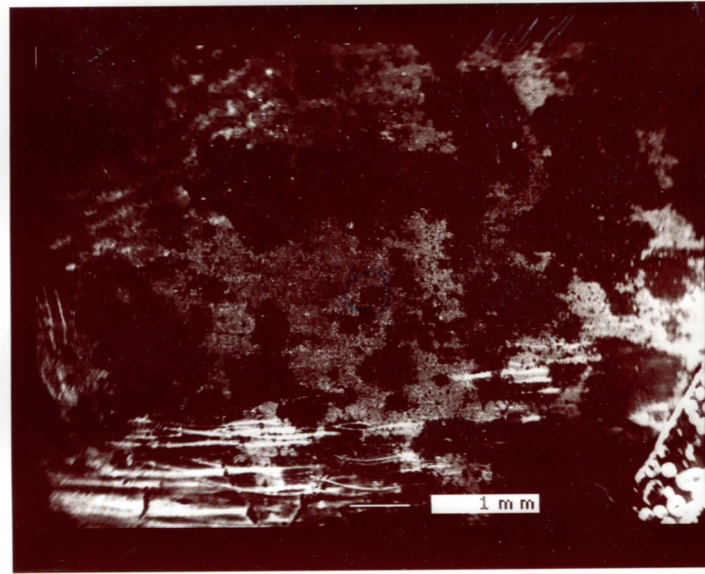
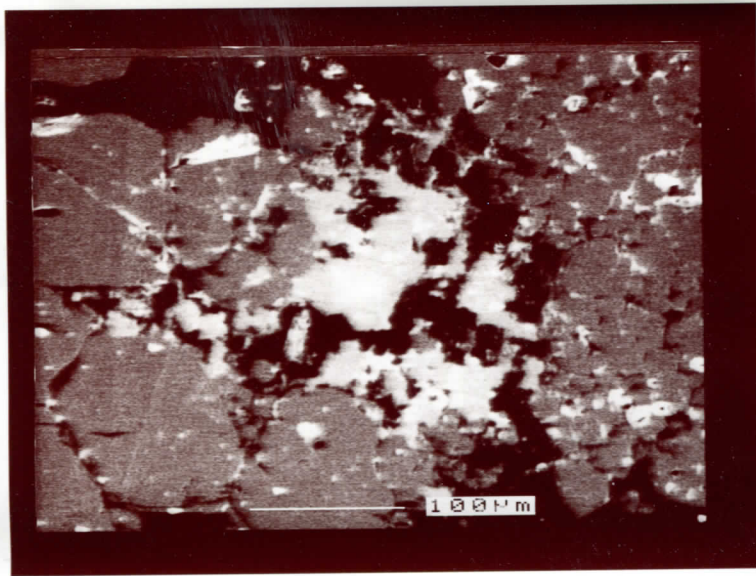
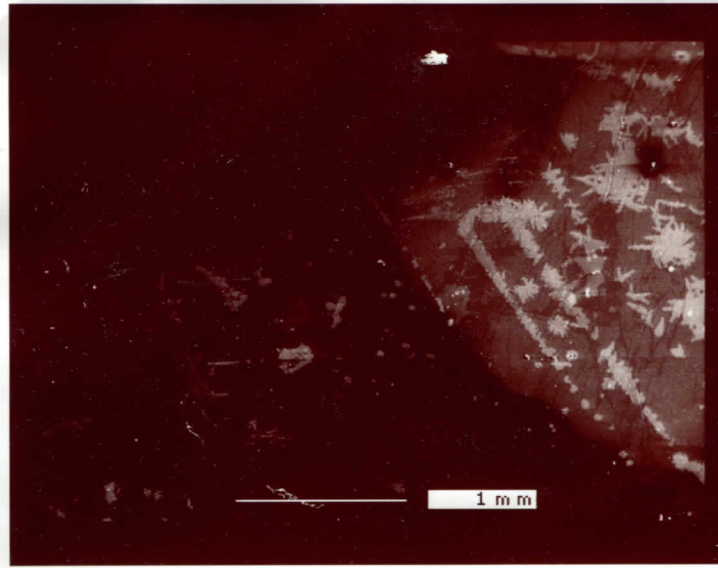
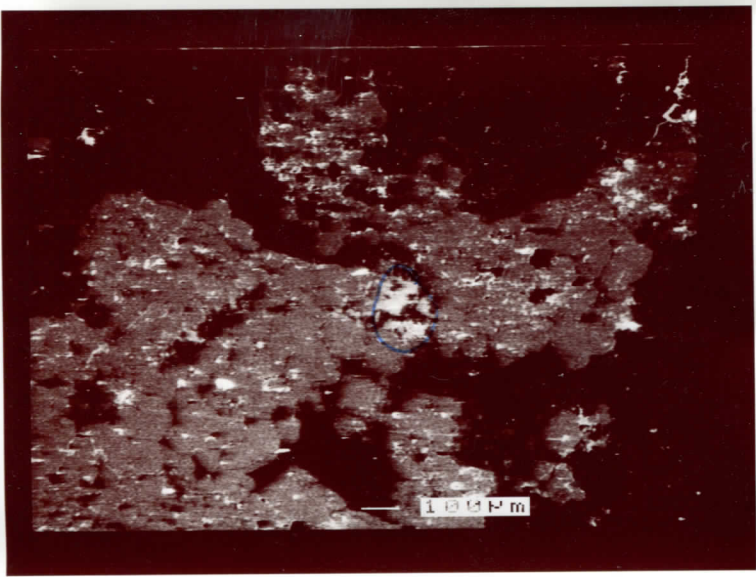


J  
near edge of slide

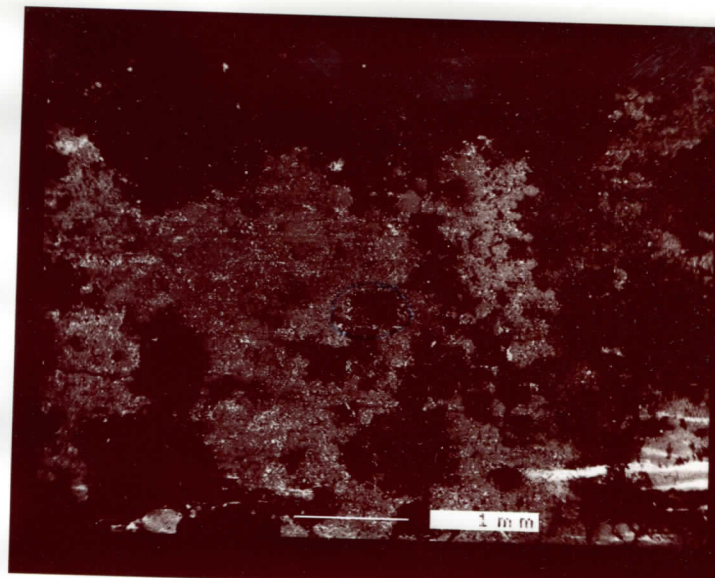
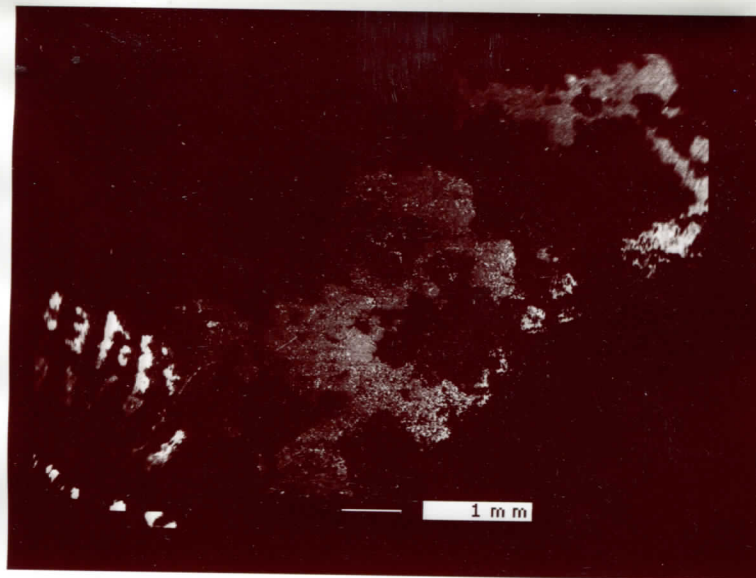


X40



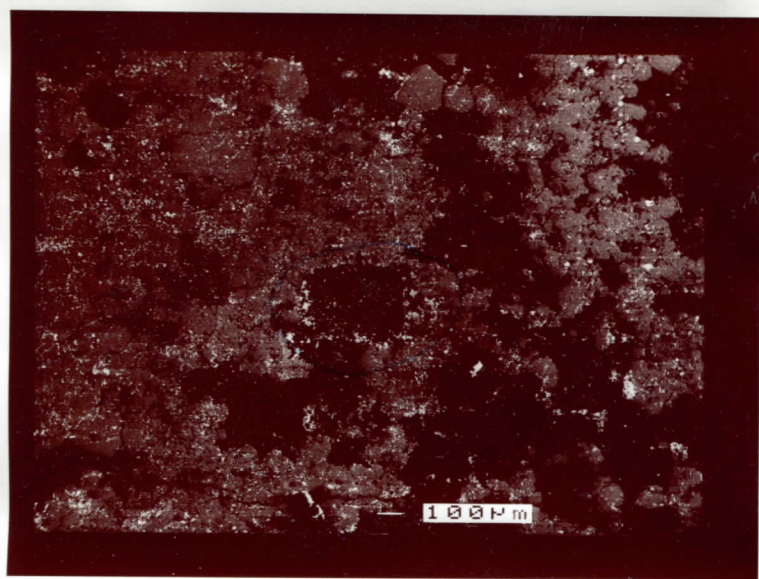


X10

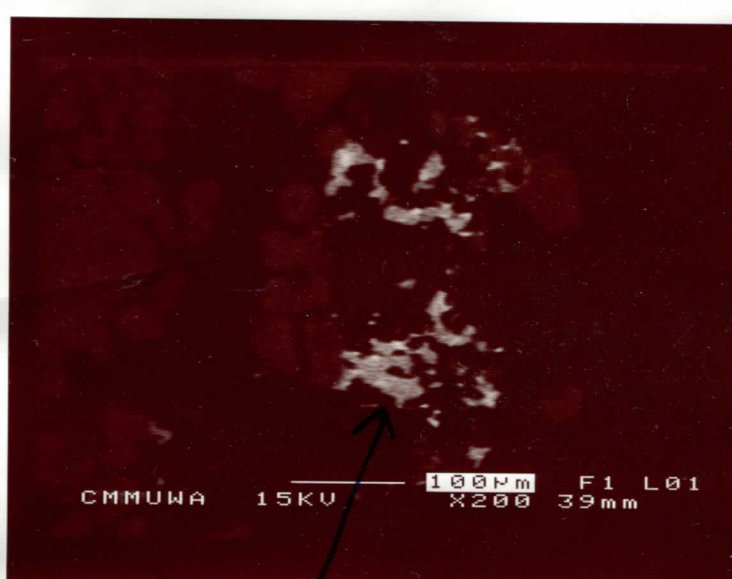


X20





x40

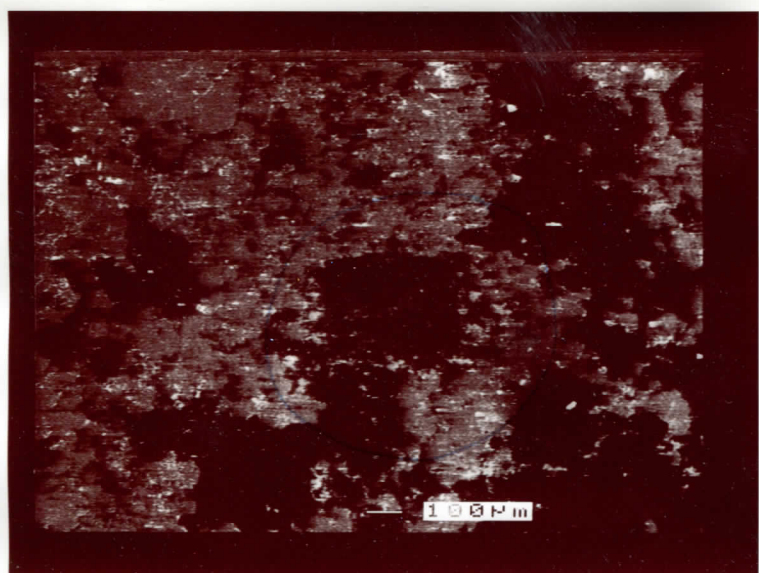


B

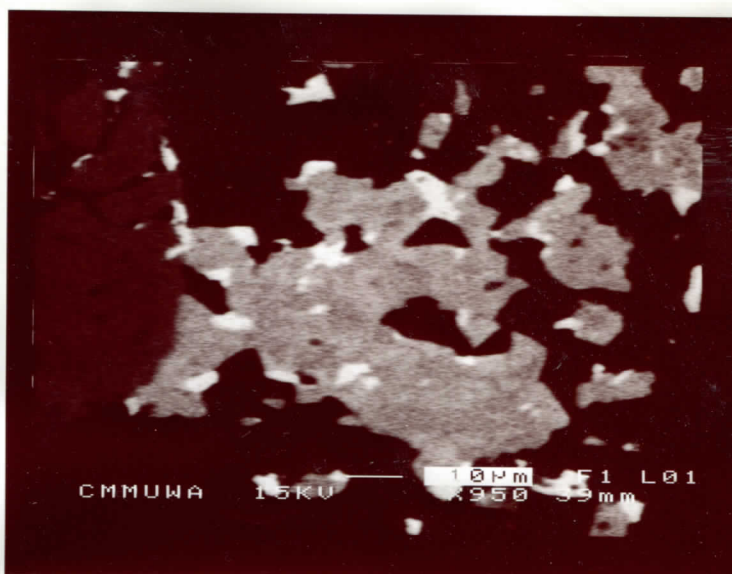
AB x

X=240

Y=208.5



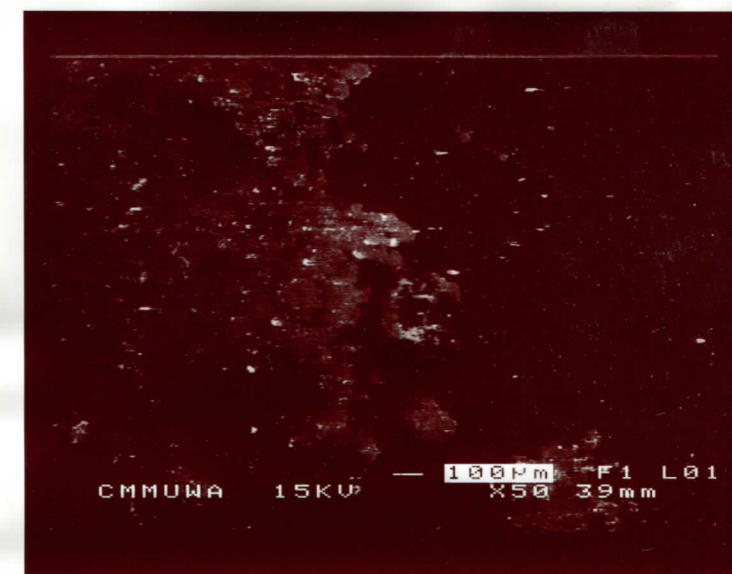
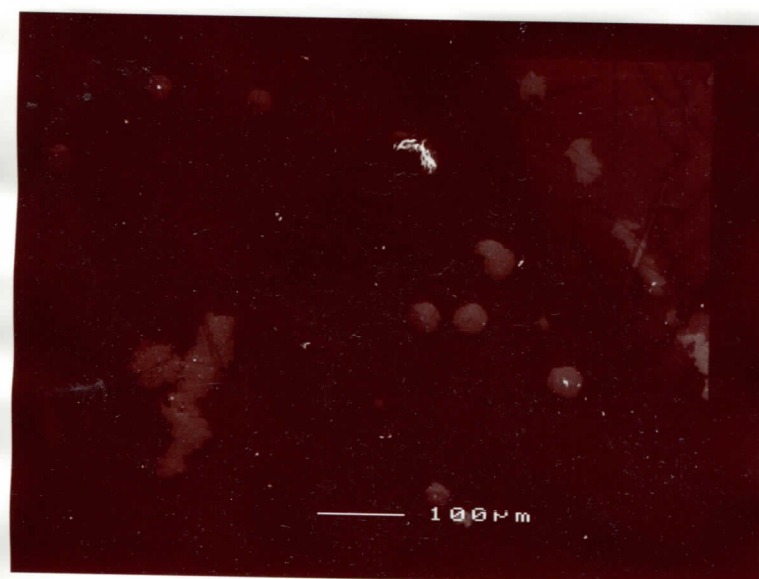
x60



B

X from AB

X=240  
Y=209

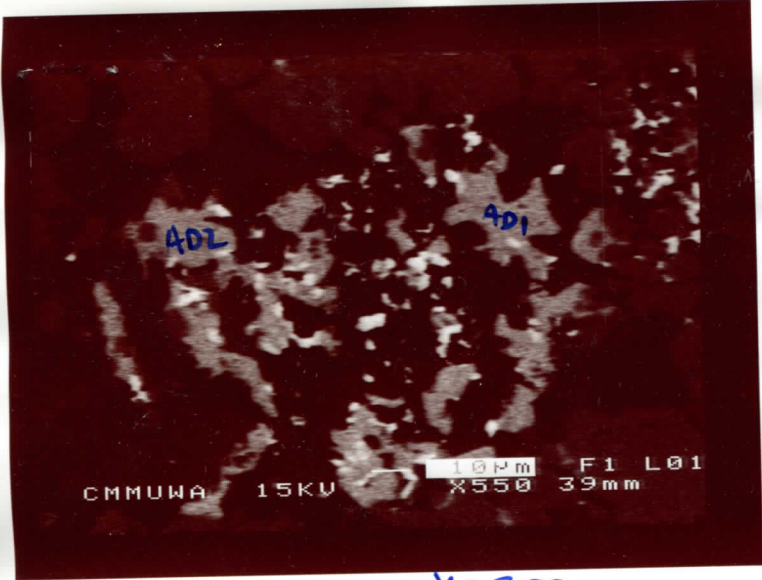


B

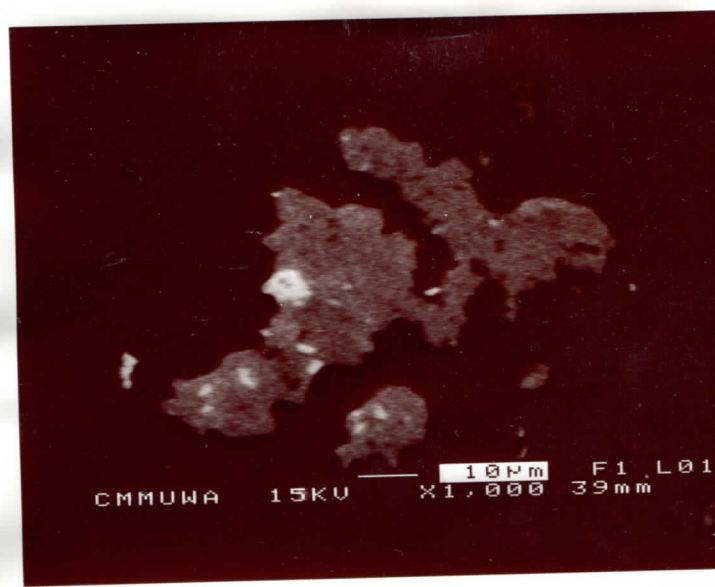
1AB

5

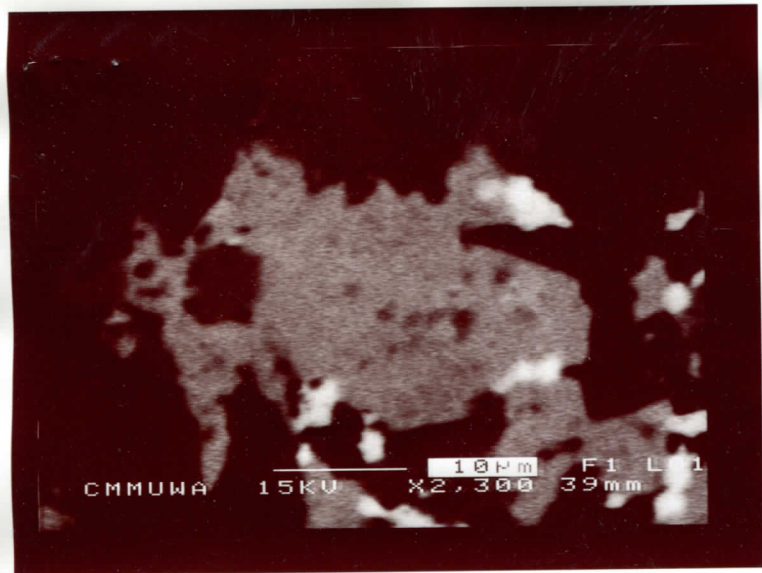




X=353  
Y=363 ADI



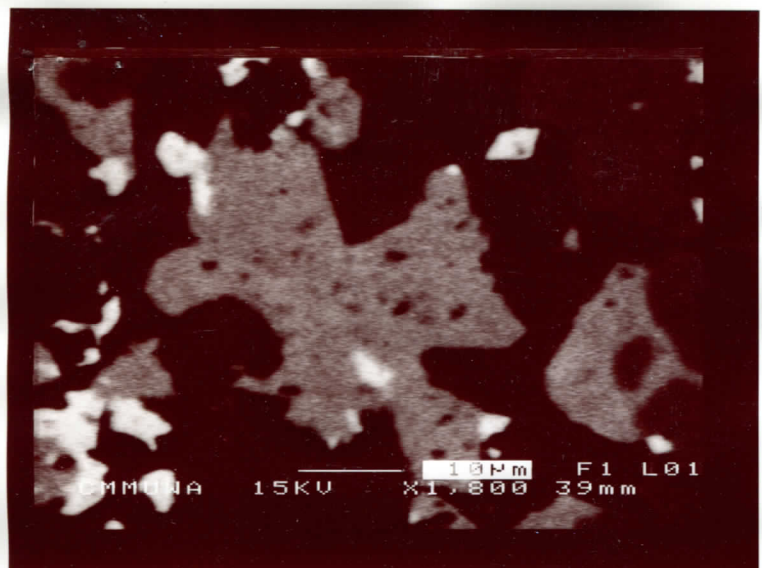
X=225 Xeno  
Y=138.5 lgn



X=352.5 AD2  
Y=363



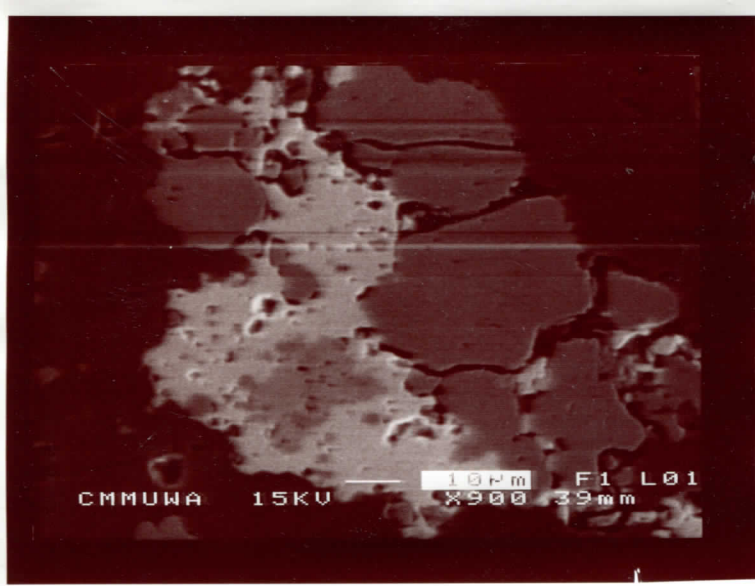
XI



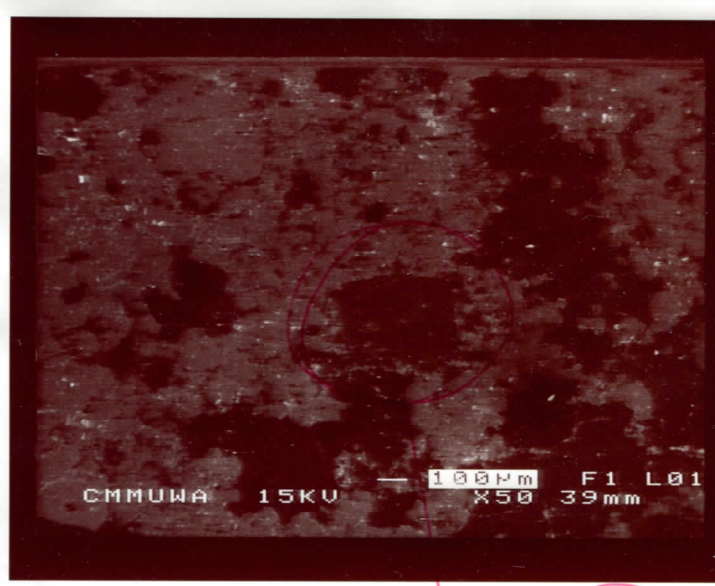
X=352.5 ADI  
Y=363







xeno + mong C



H 

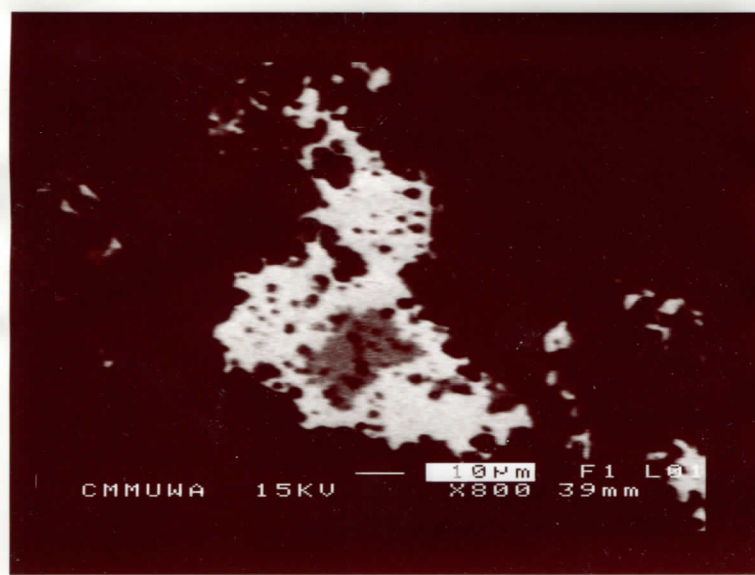
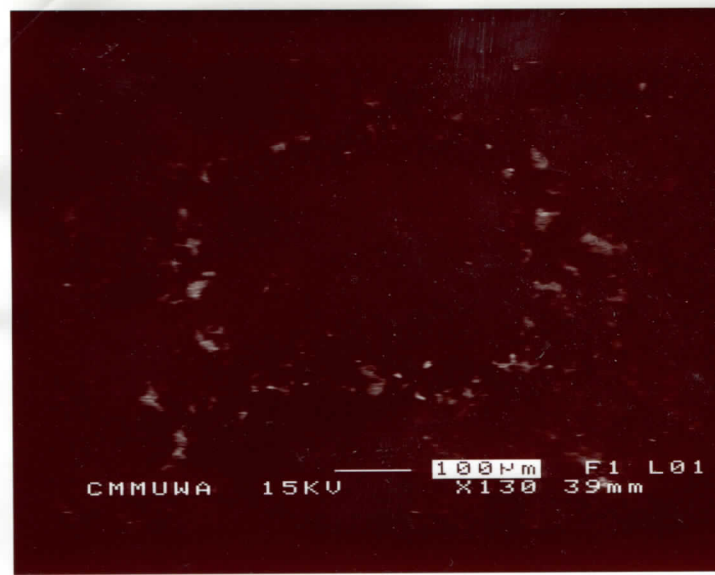
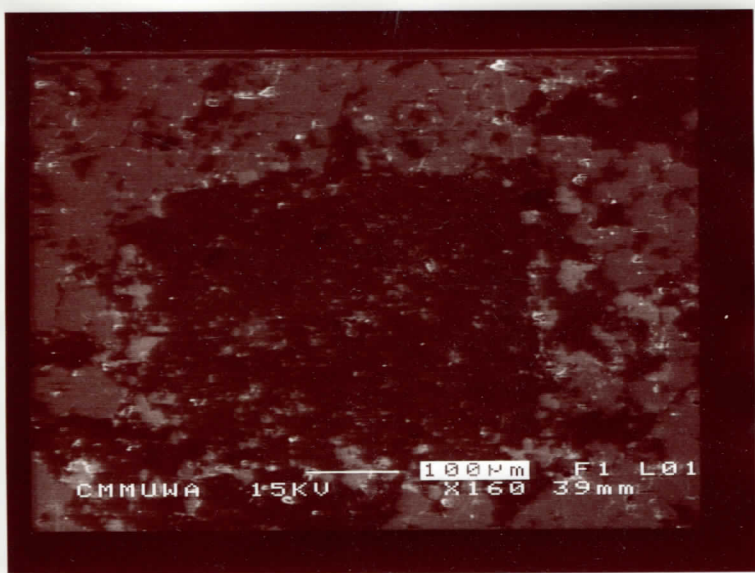


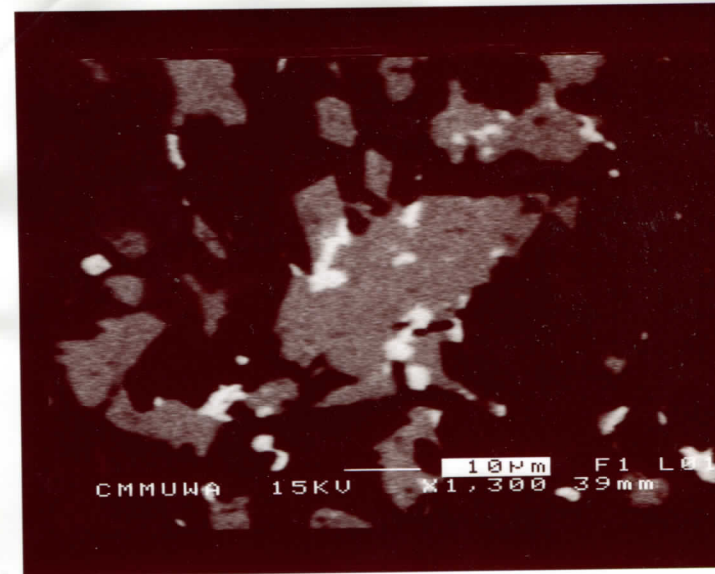
photo bg'l  
 grey = xeno  
 white = mong  
 X=144  
 Y=145.5 C



H centre = X=220.5  
 Y=172.5 RM

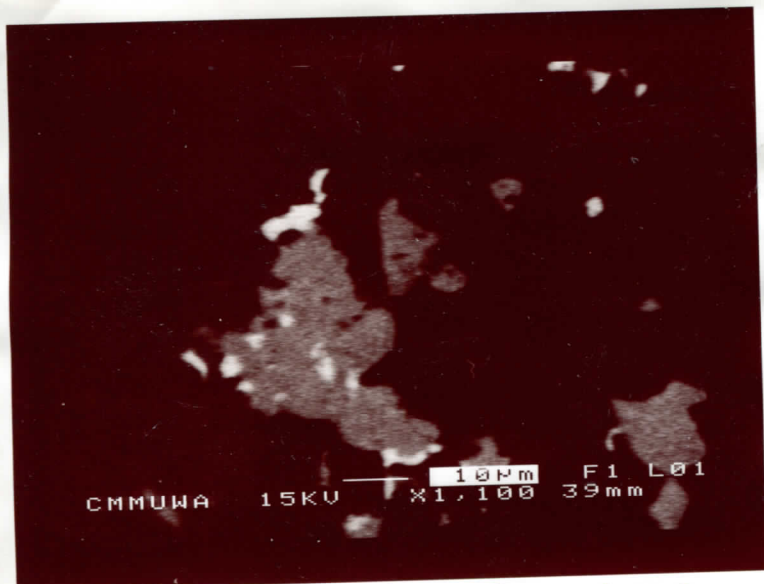


H



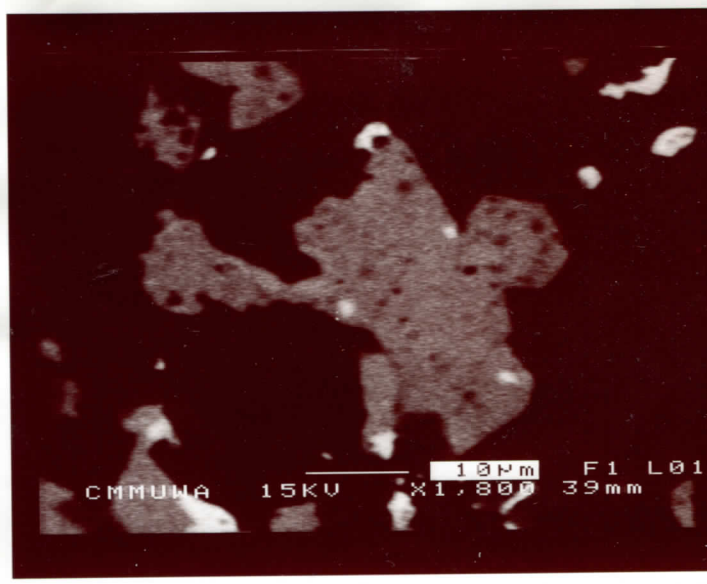
H X=205  
 Y=173 R





H

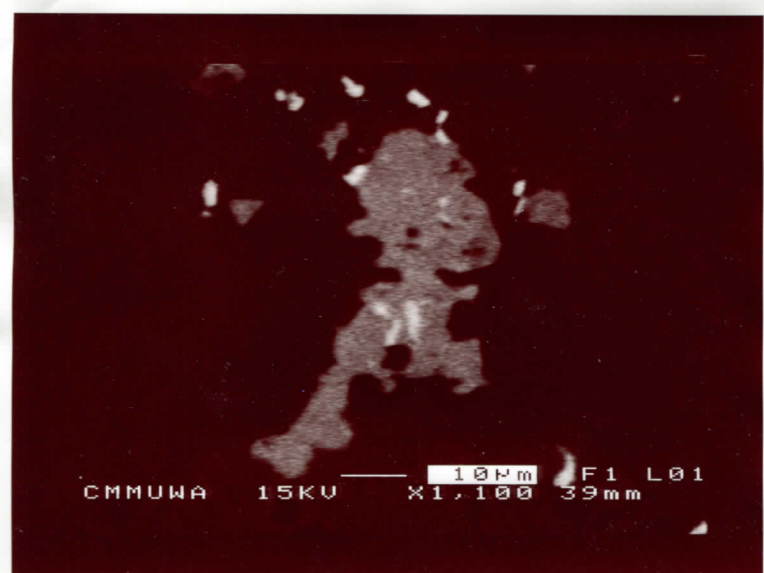
X=205  
Y=174.5  
bgr  
RM2



H

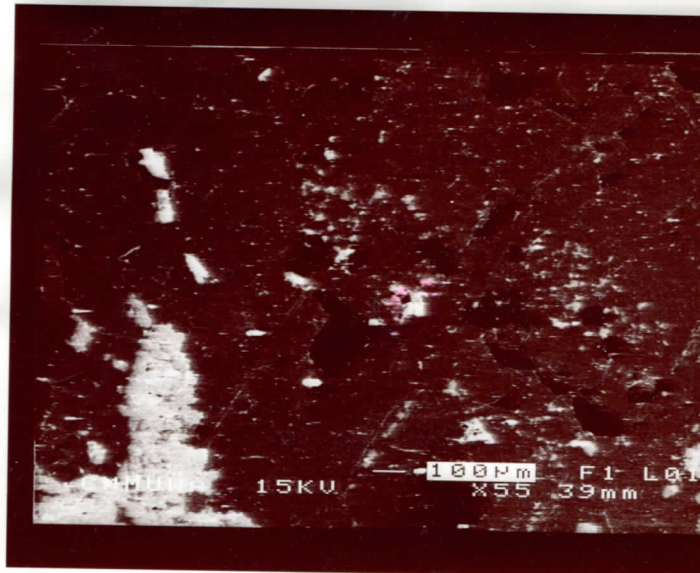
X=205  
Y=172

RM



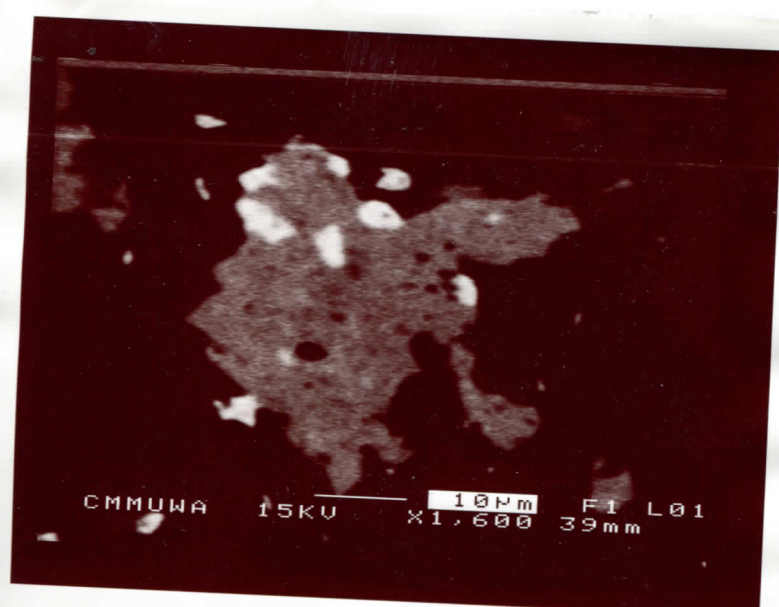
H

bgs  
X=204.5  
Y=175.0  
RM3



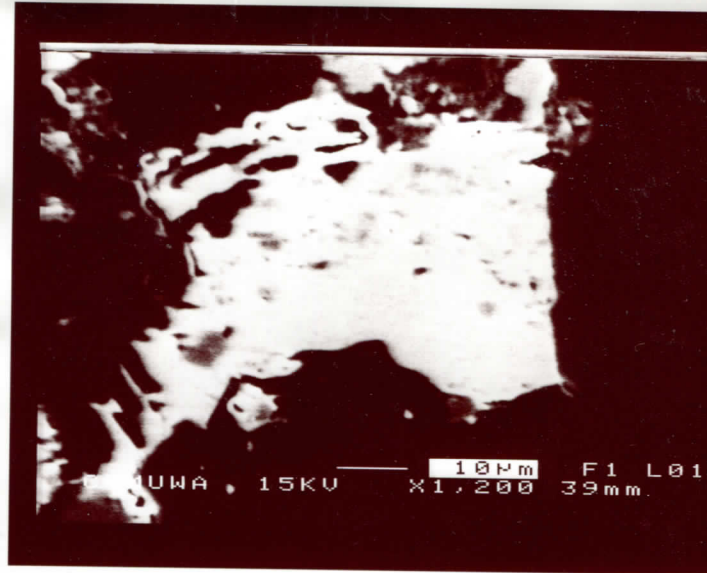
F X6

near edge



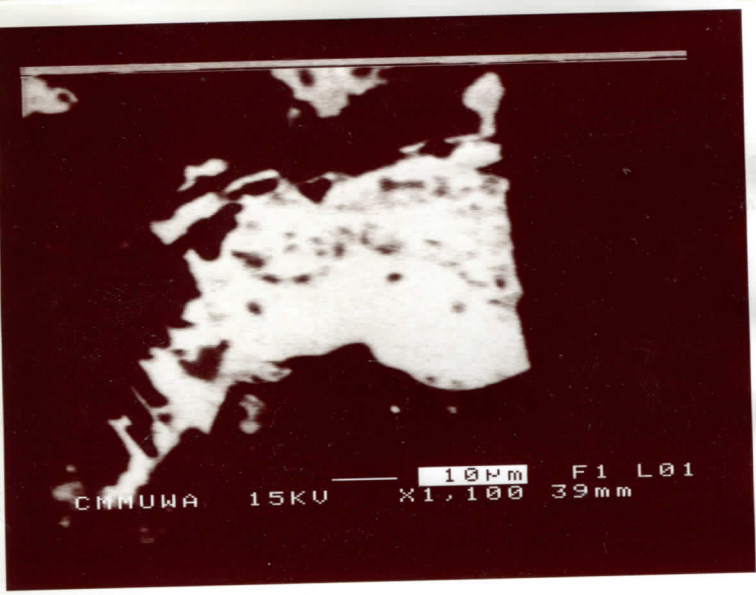
H

X=200.5  
Y=170  
RM4

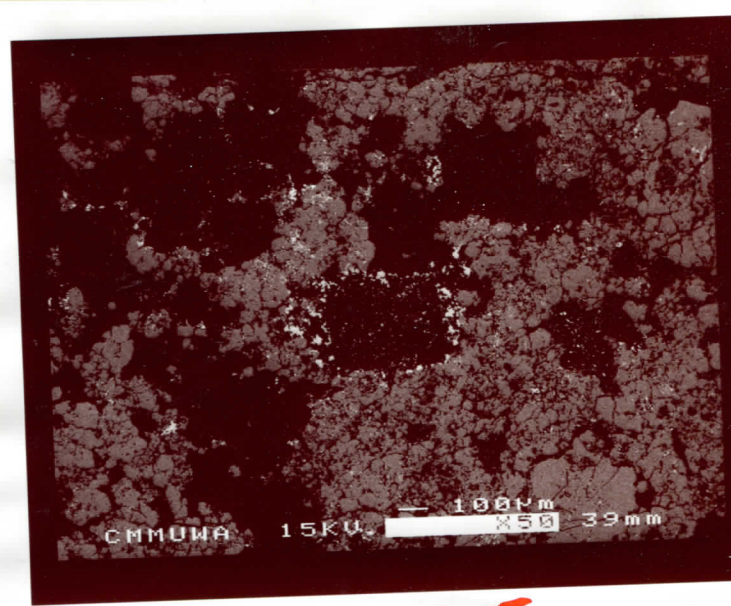


R

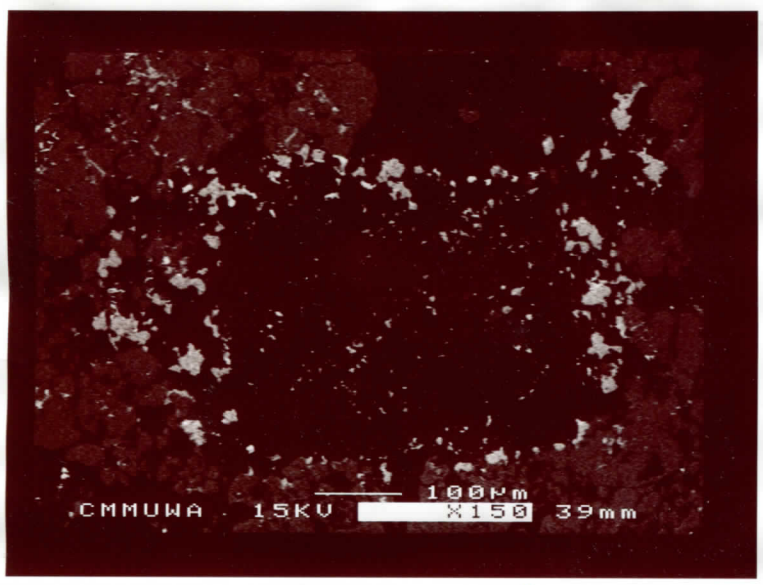




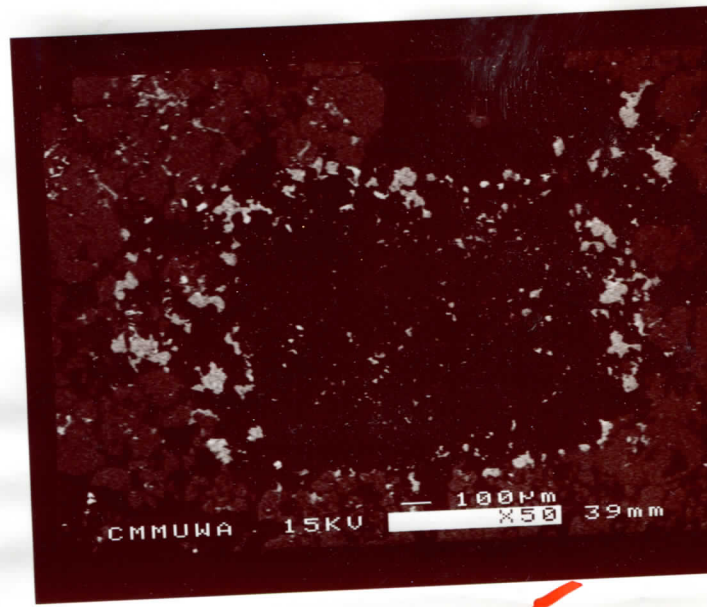
F X=187 Y=220 1mm3



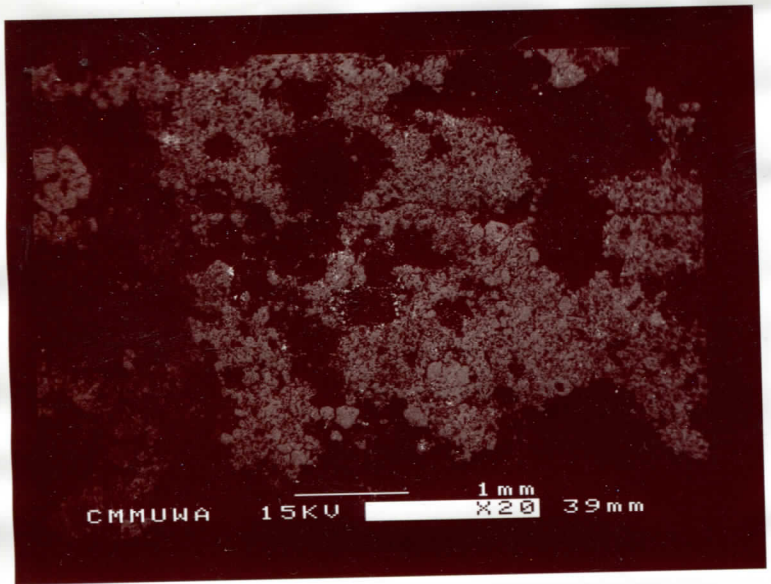
x5



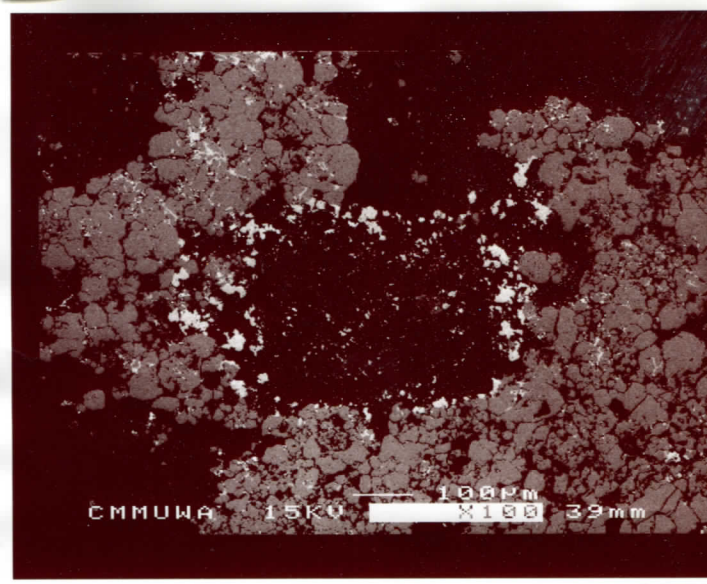
x5



x5

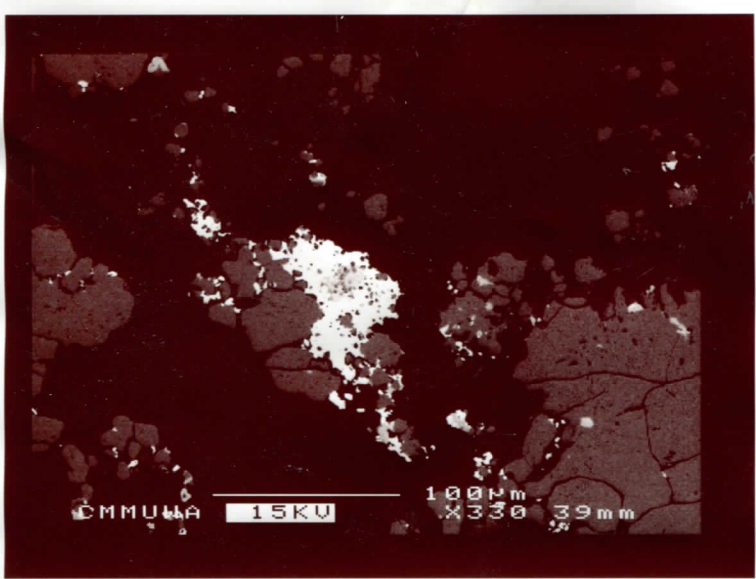


x5

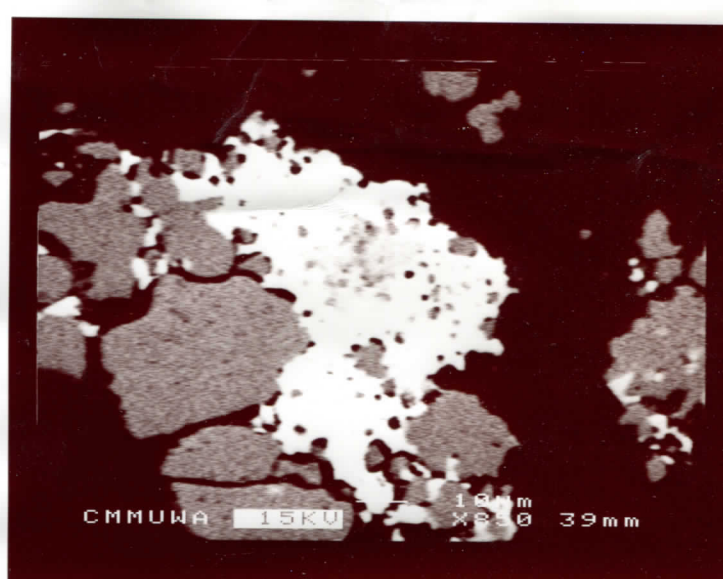


x5

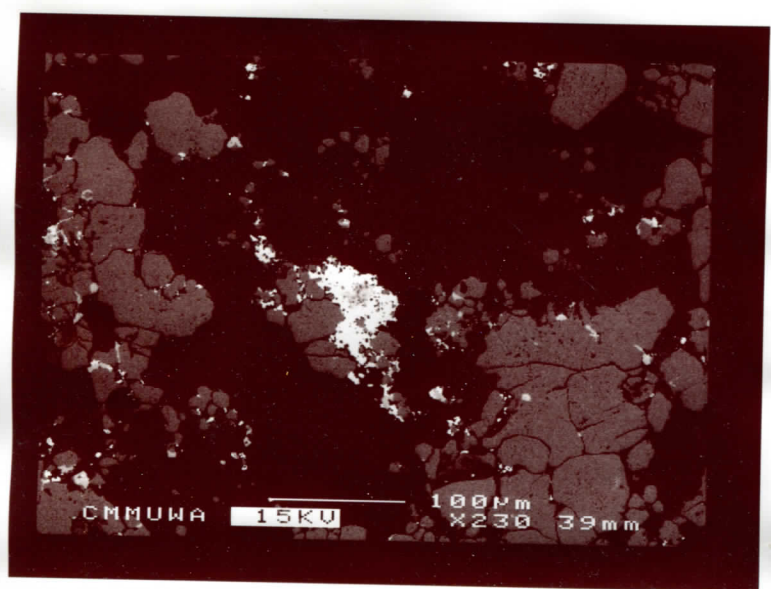




x1



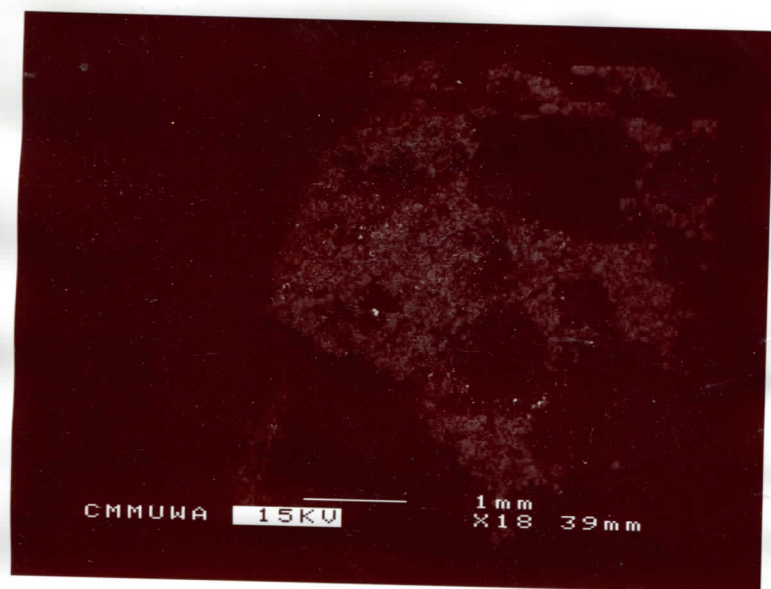
x1



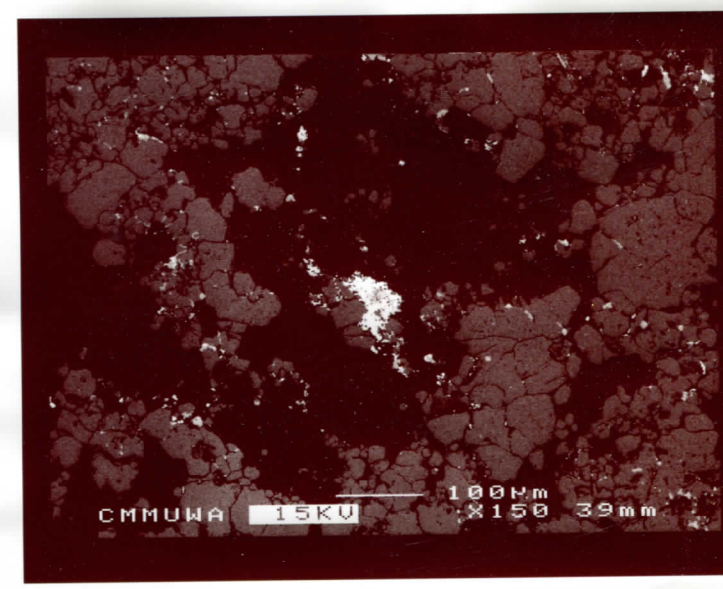
x1



x1

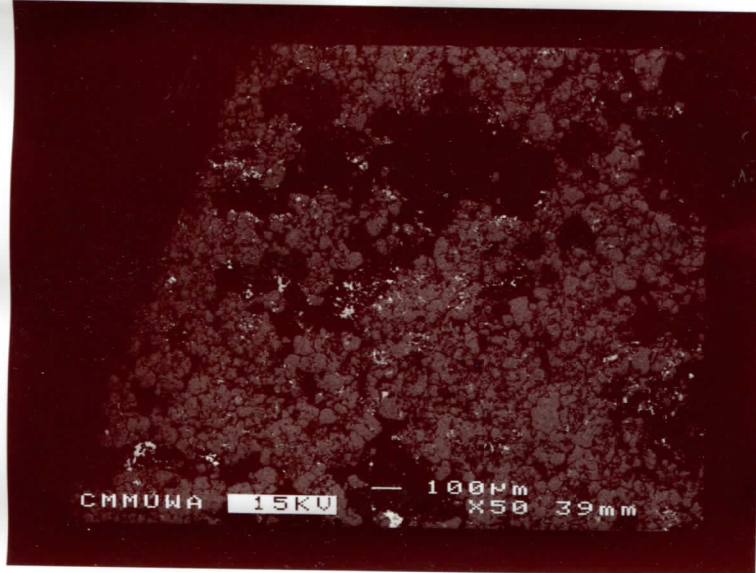


x1

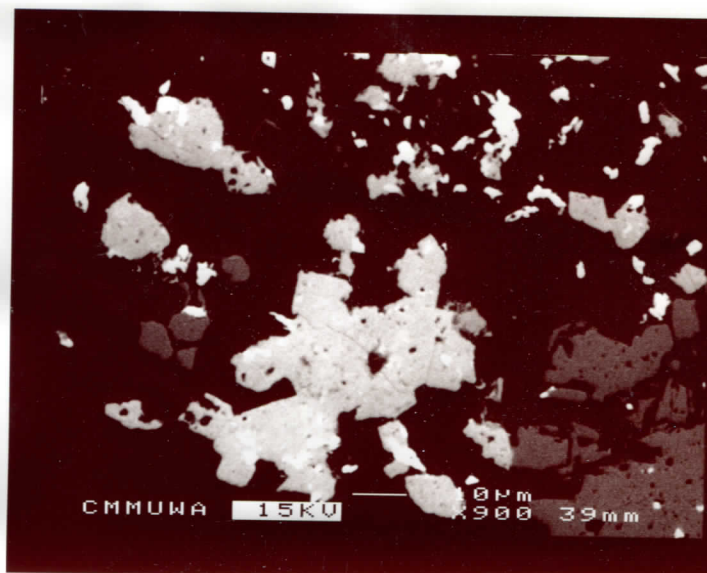


x1

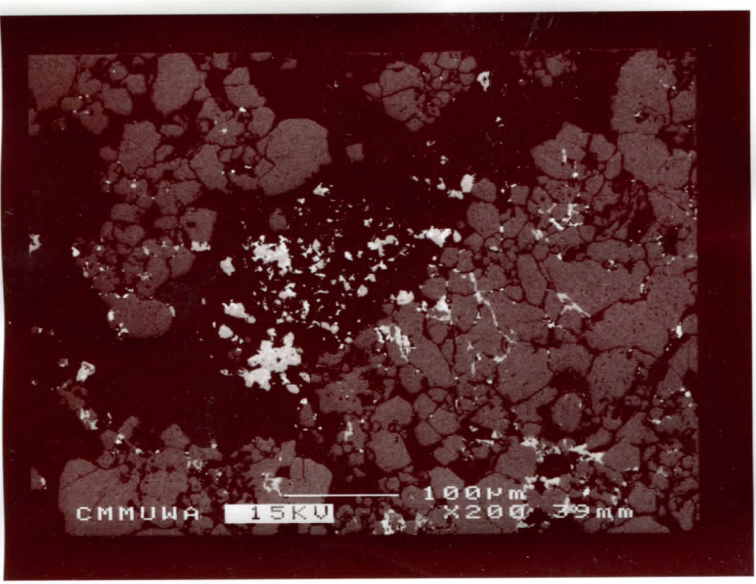




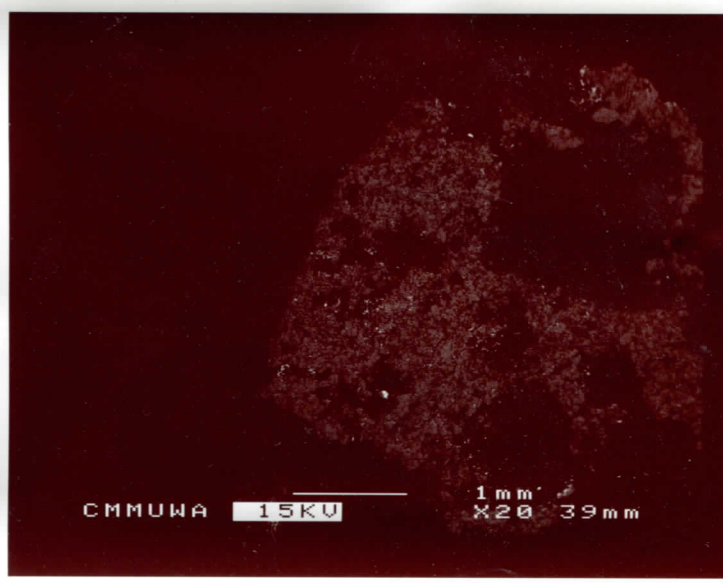
X3



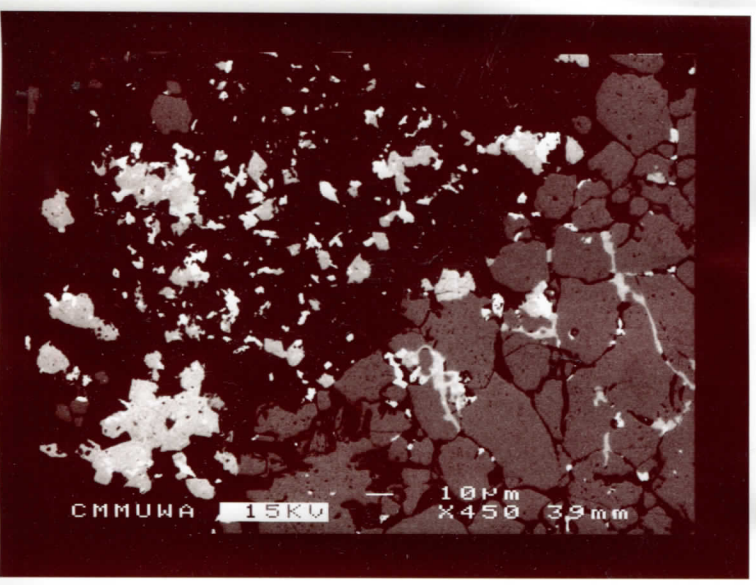
X3



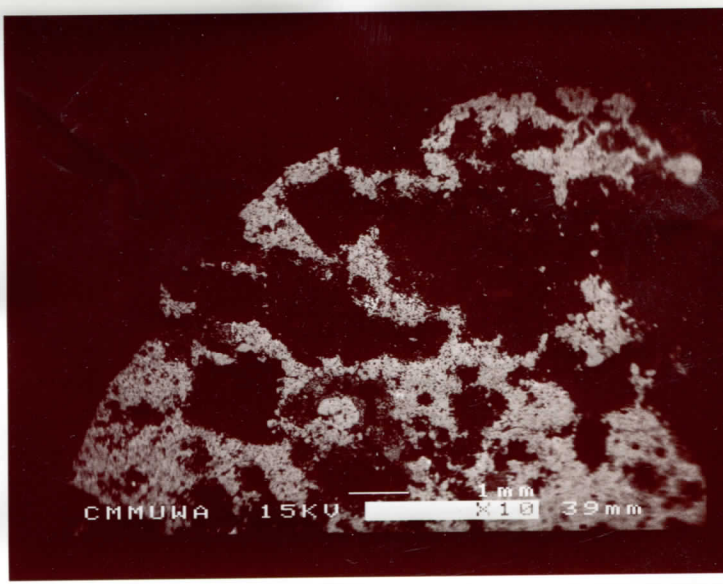
X3



X3

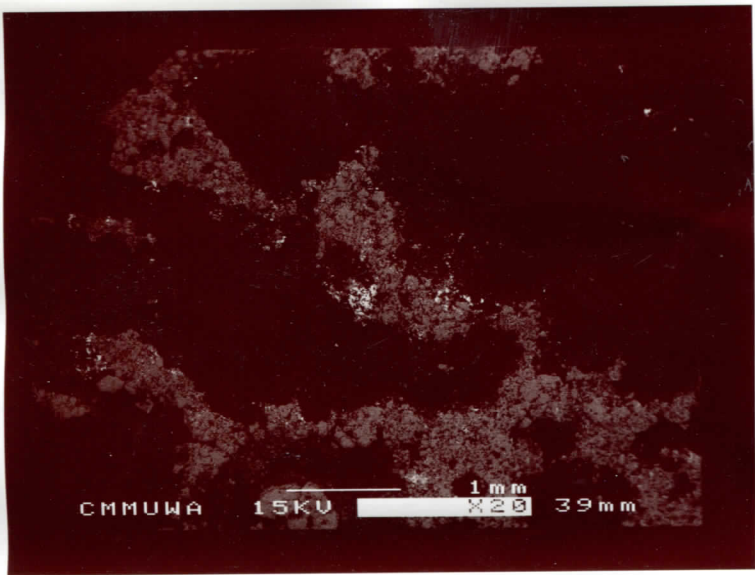


X3

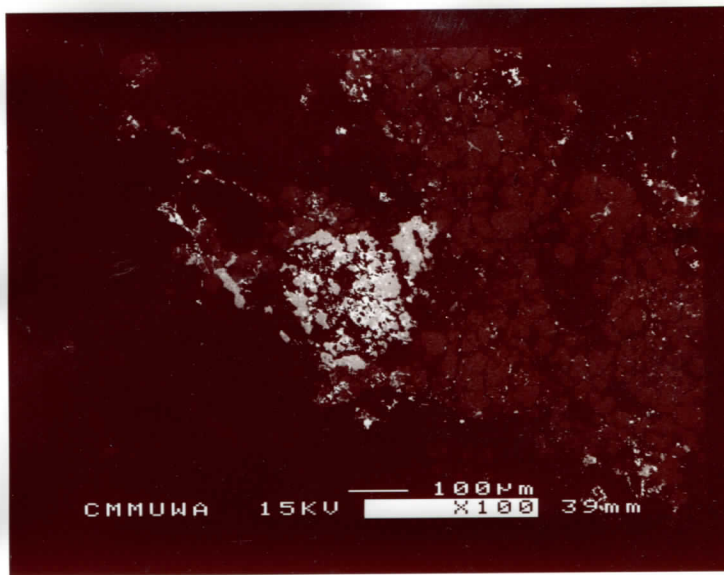


X4

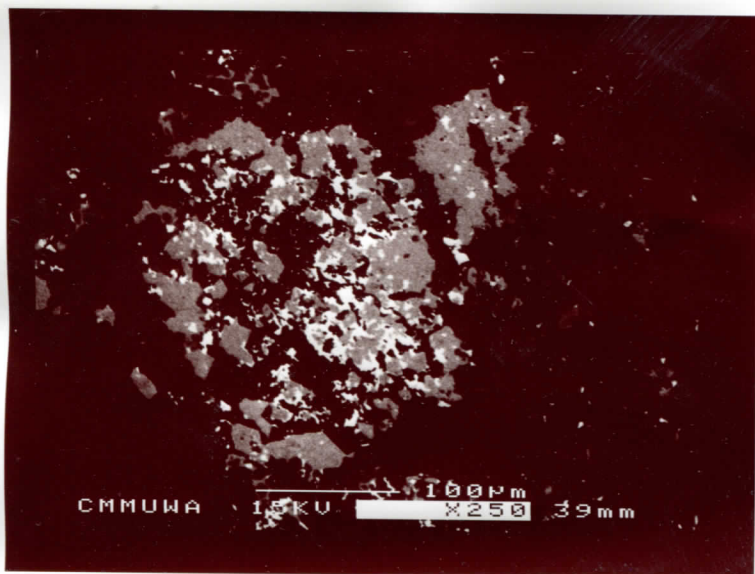




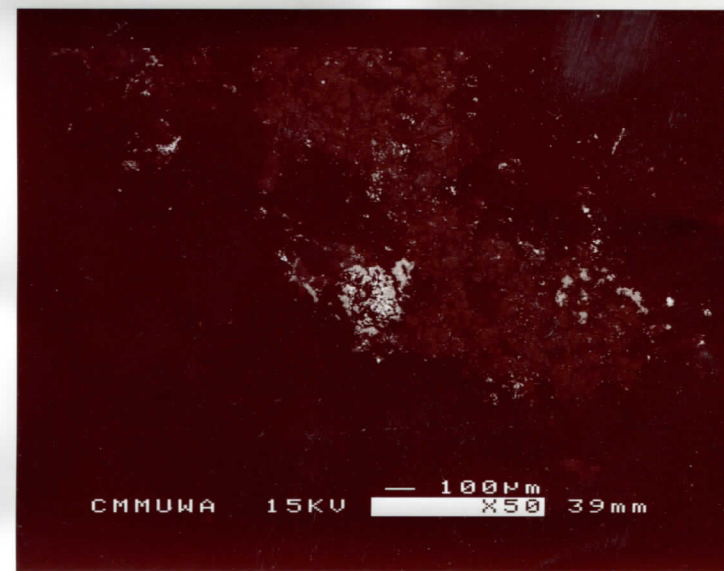
x4



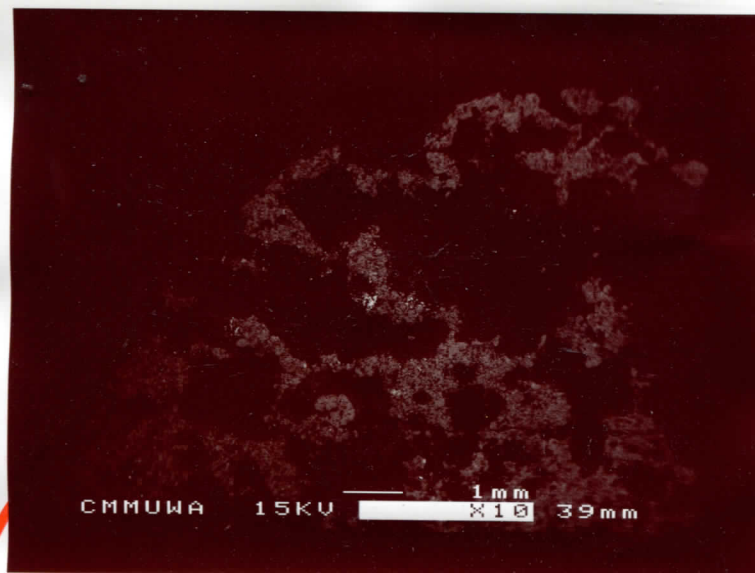
x4



x4



x4



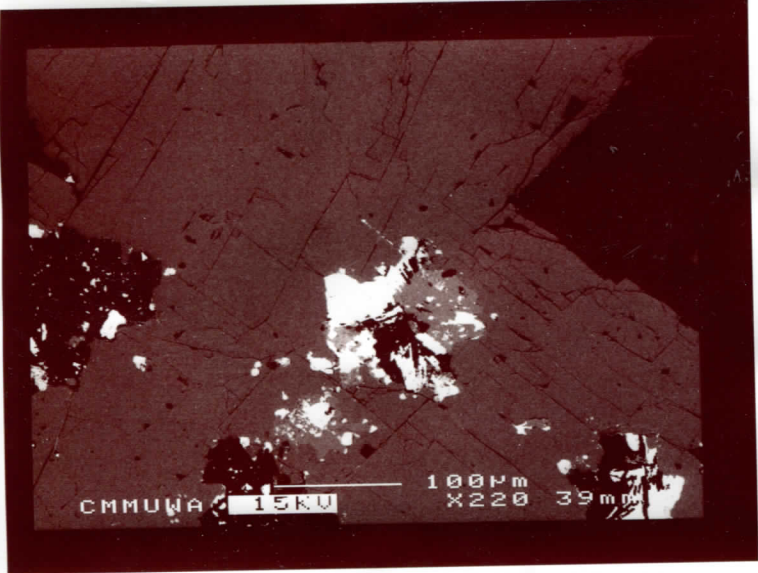
ed4

x4

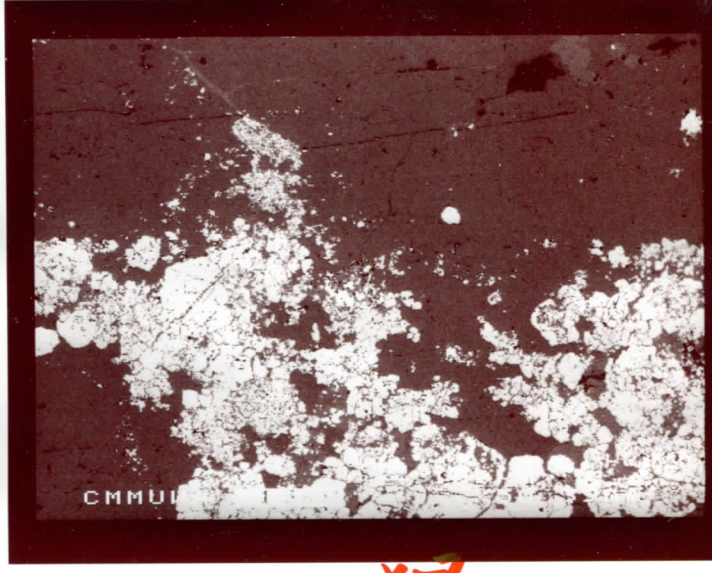


x6

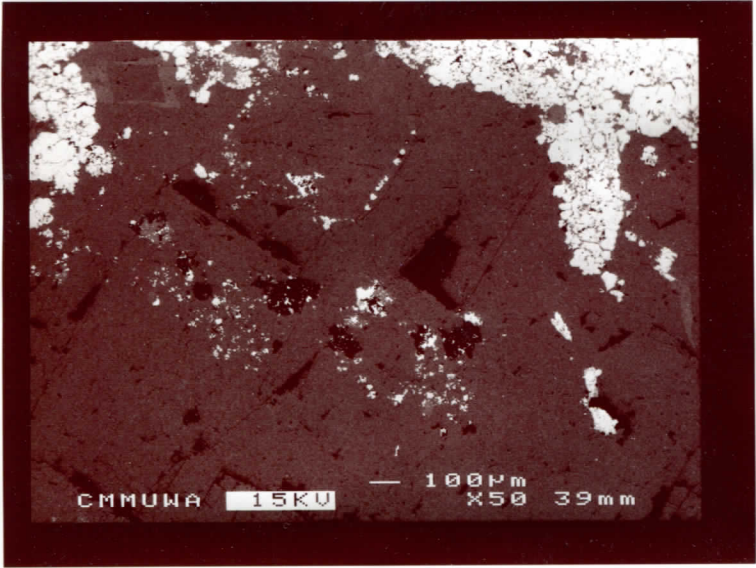




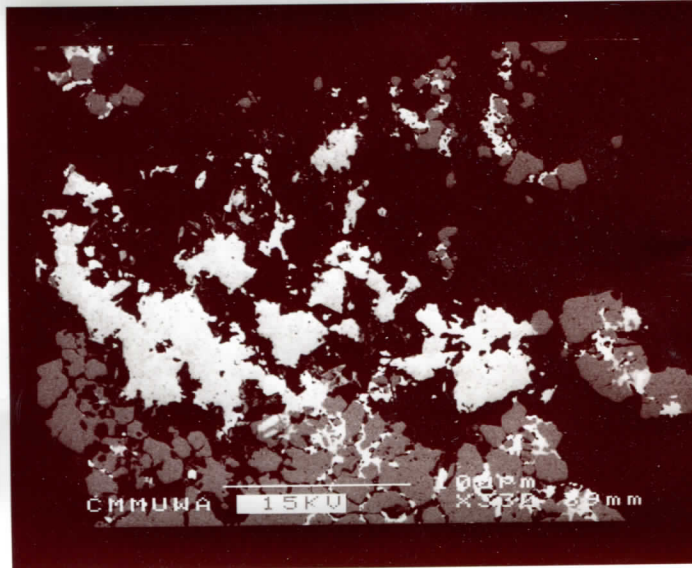
x6



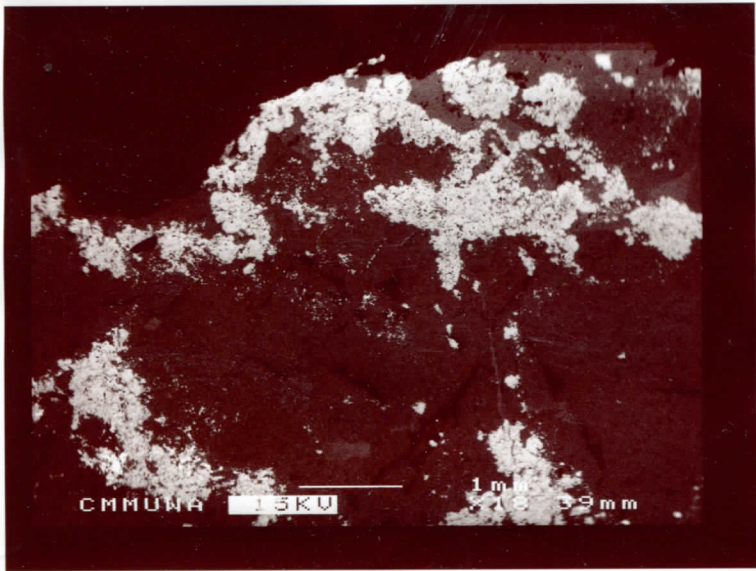
x7



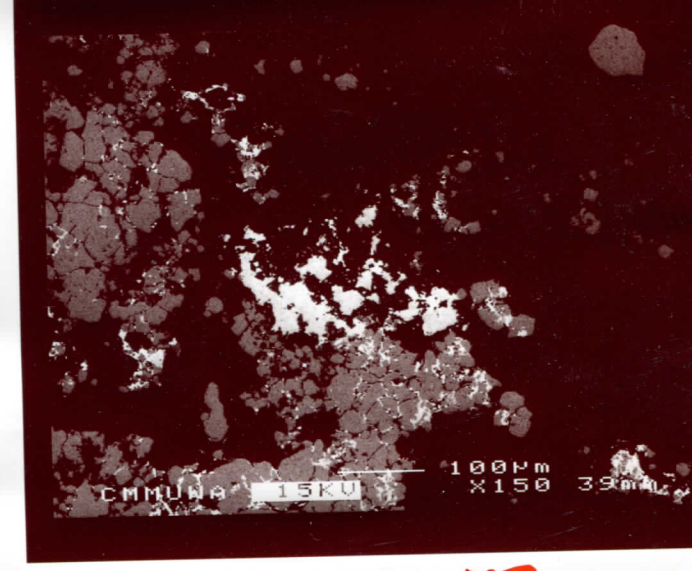
x6



x7

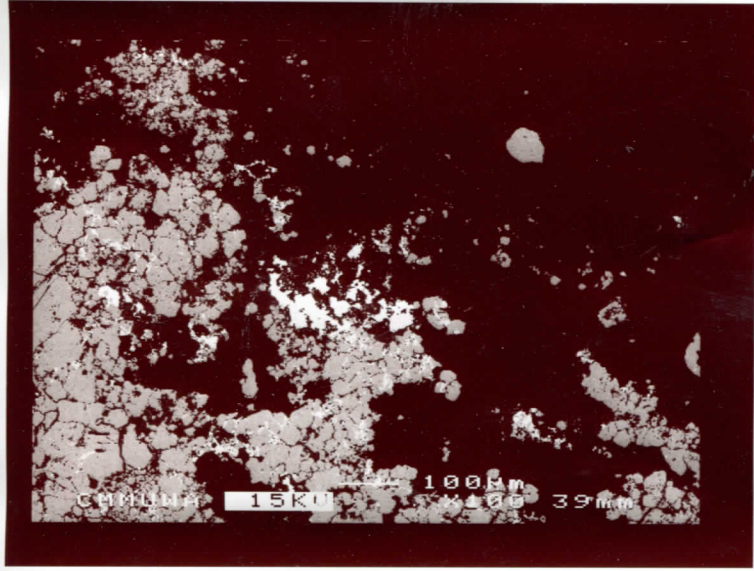


x6

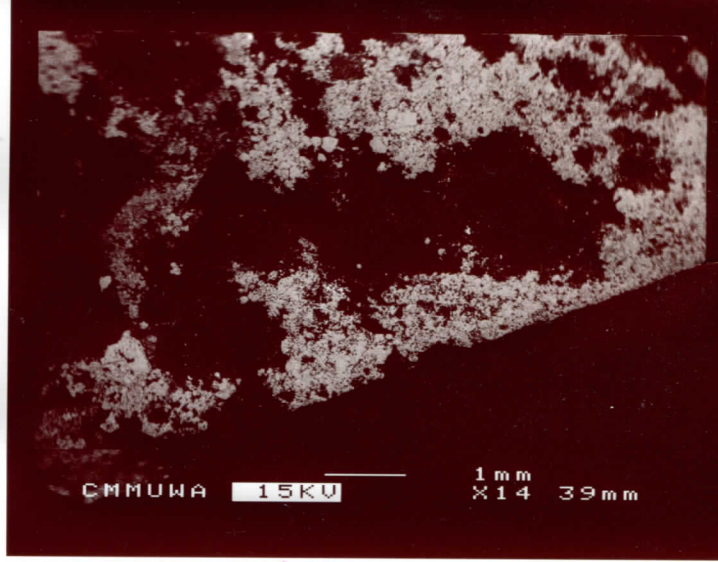


x7

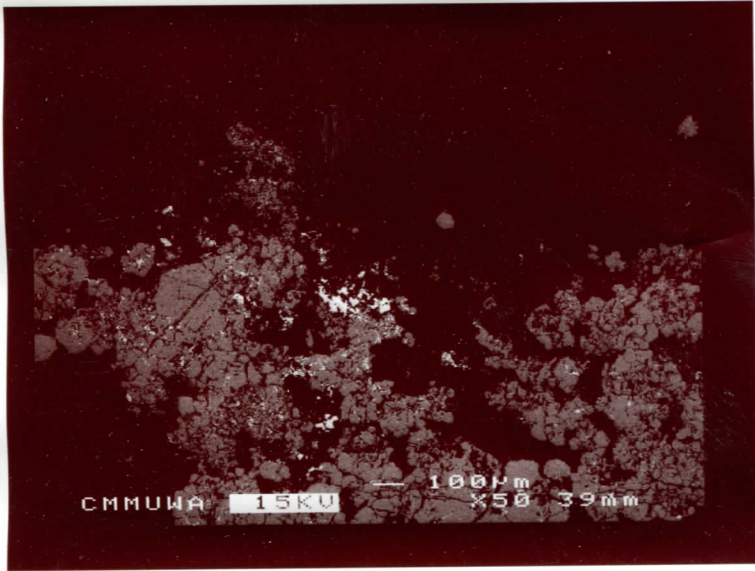




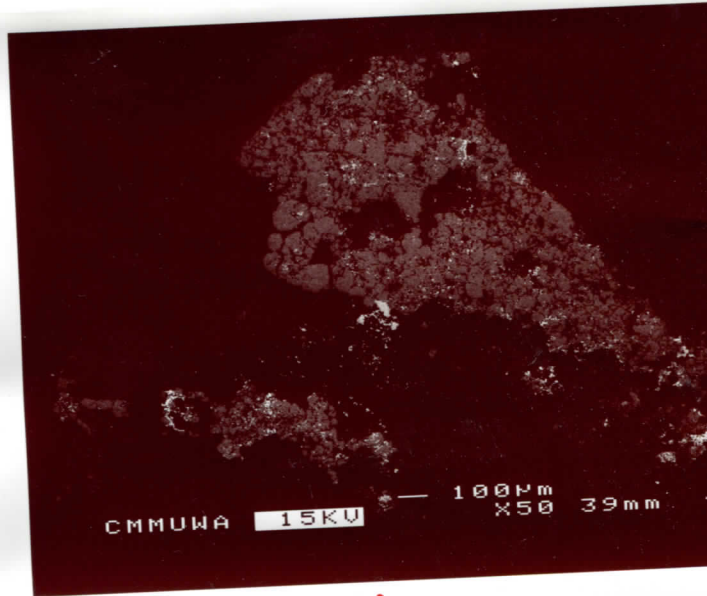
x7



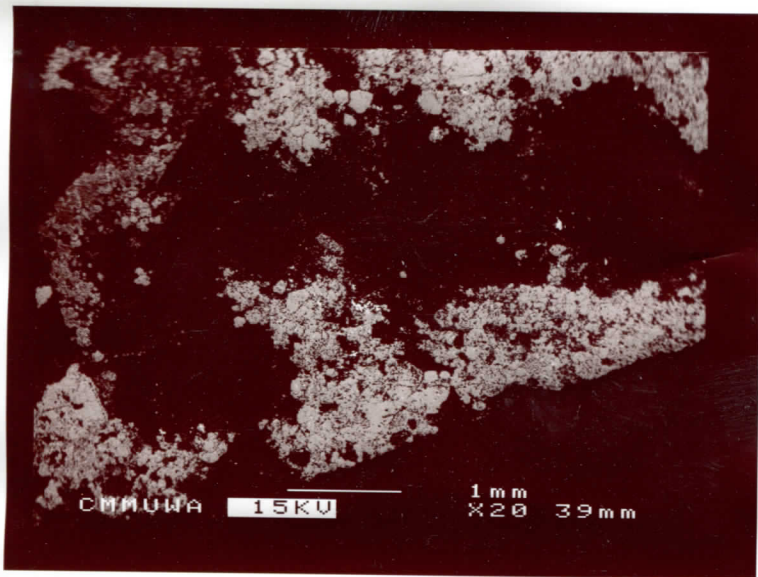
x7



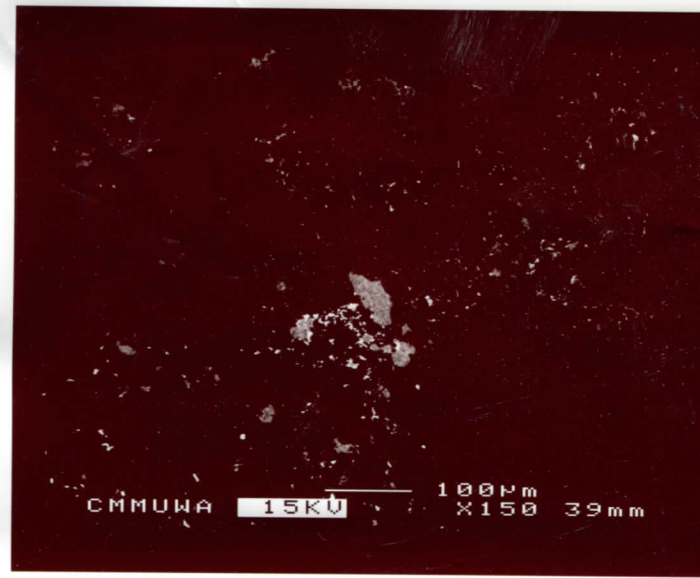
x7



x10

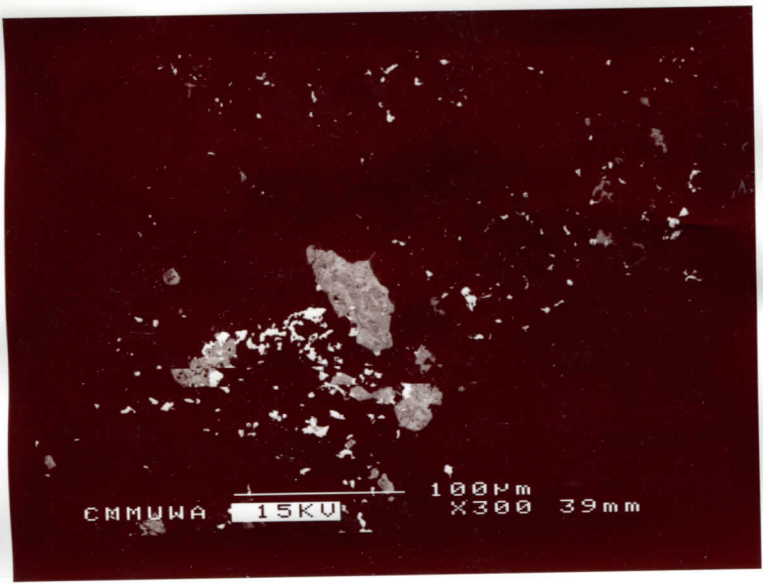


x7

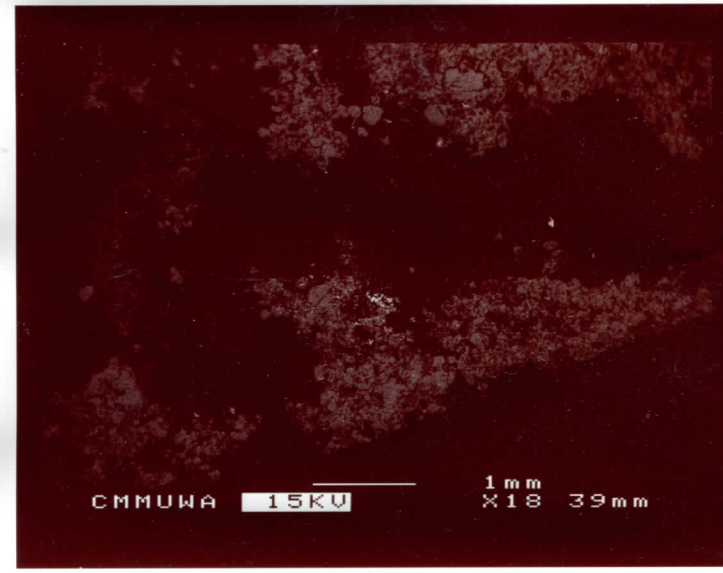


x10

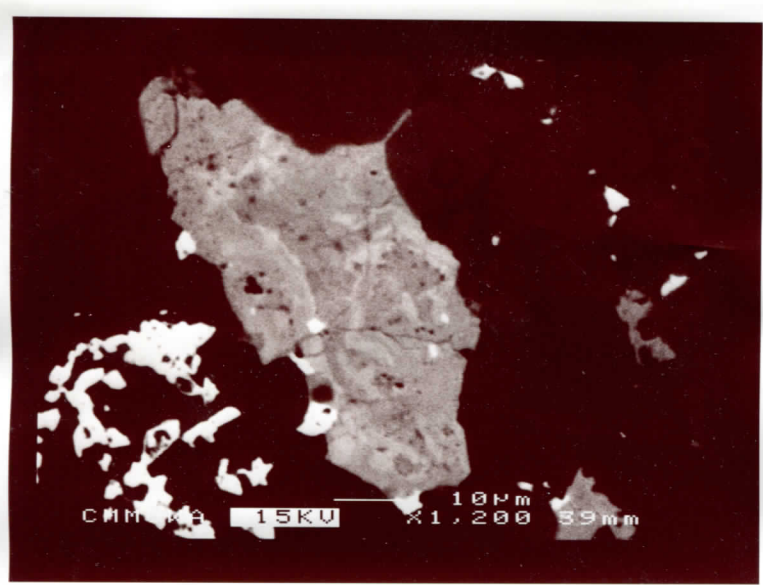




X10



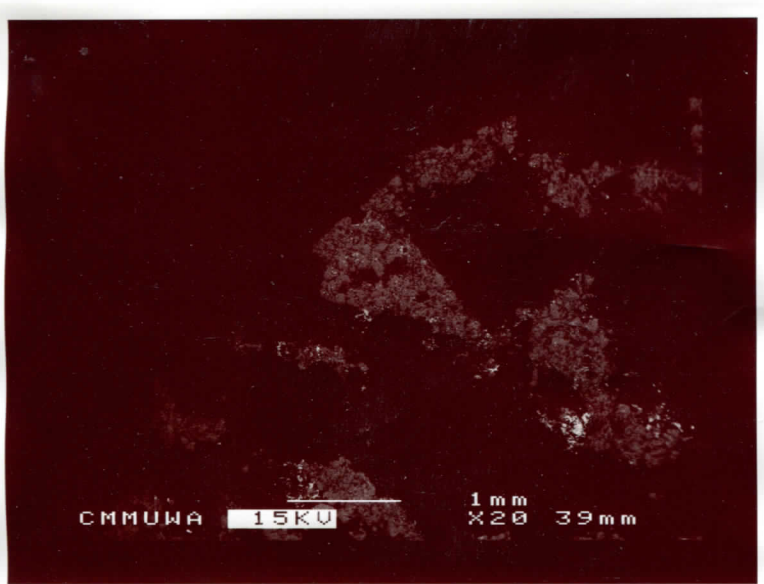
X11



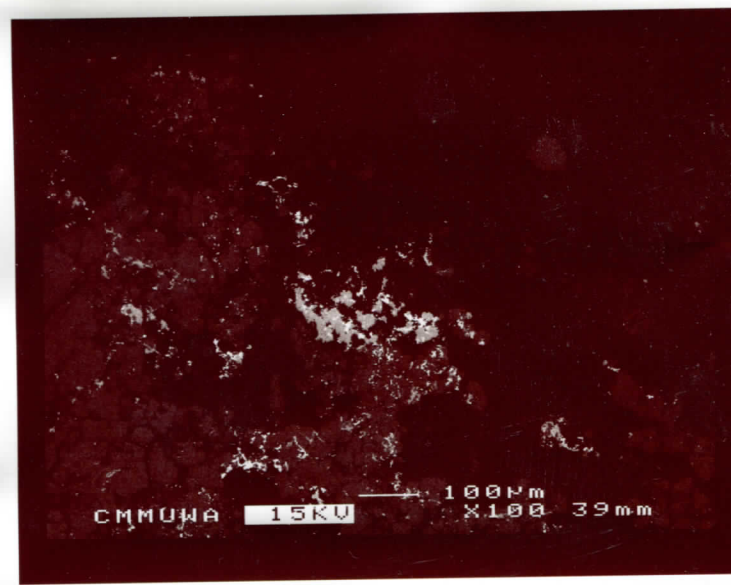
X16



X17

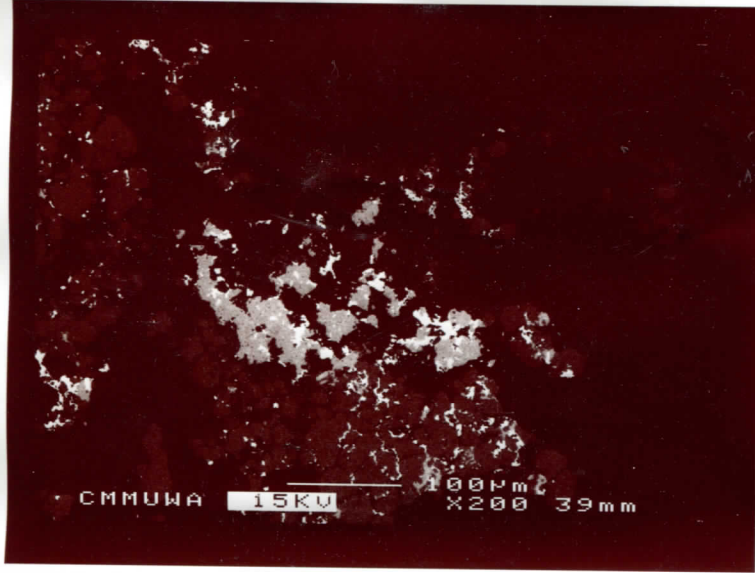


X10.

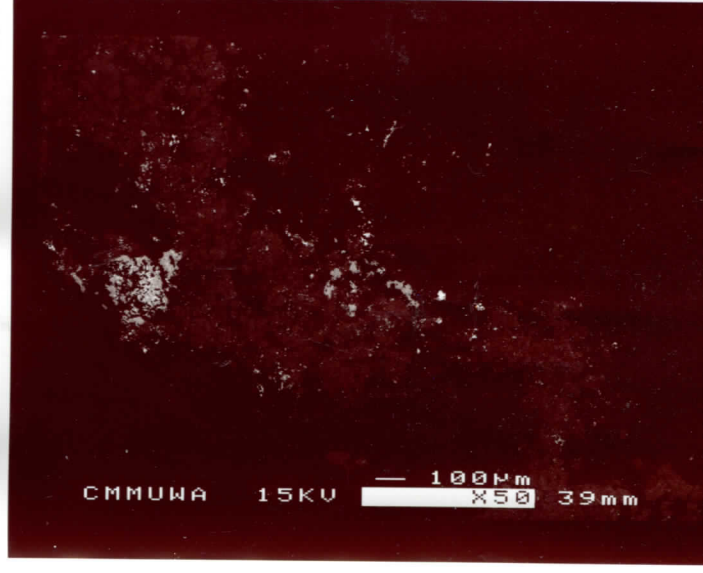


X11

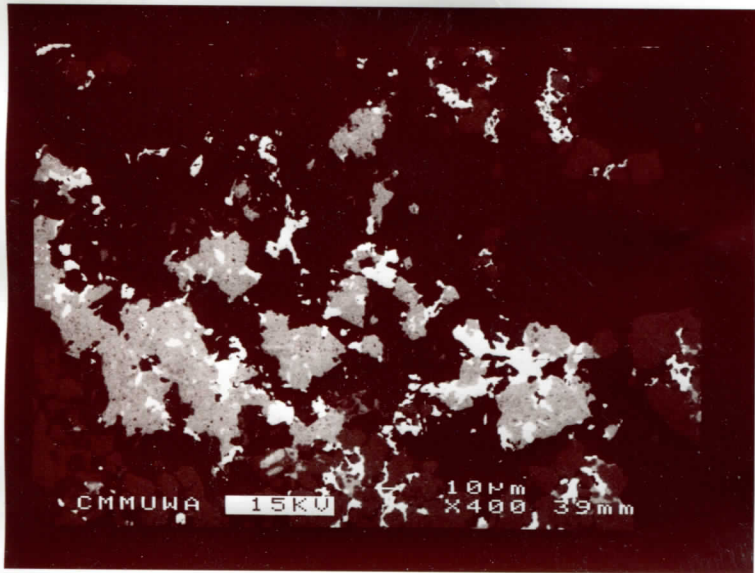




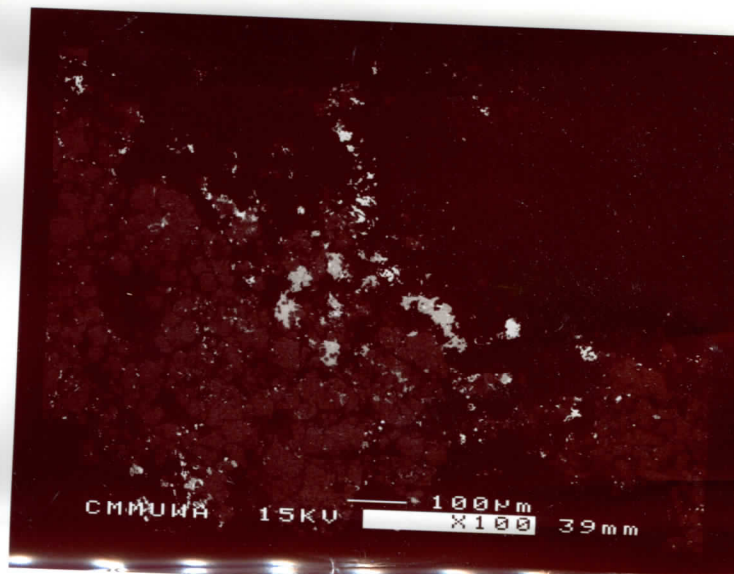
XII



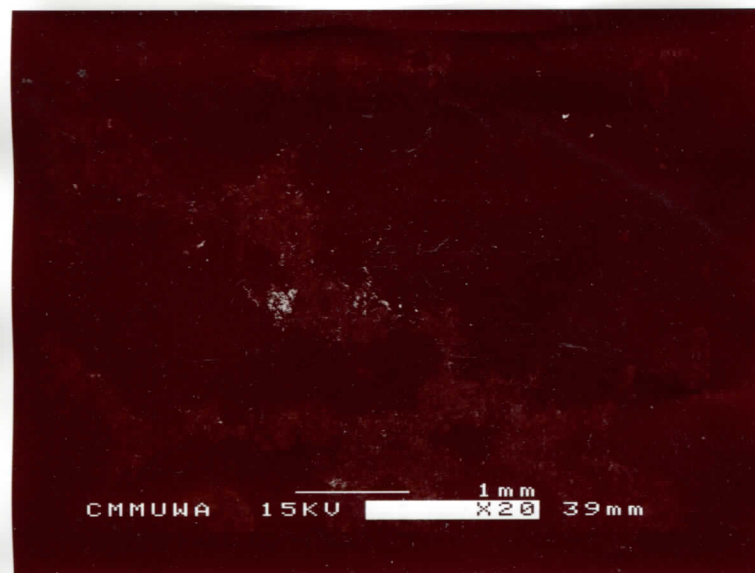
XII



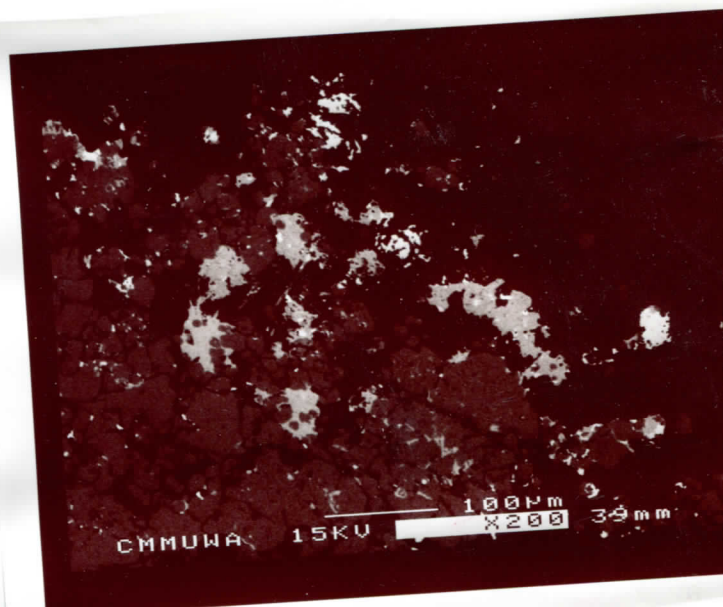
XII



XII

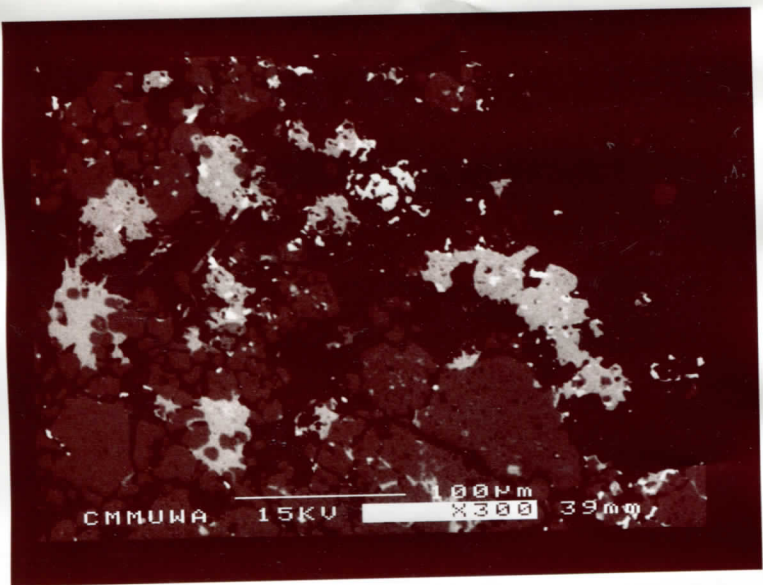


XII



XII





X12