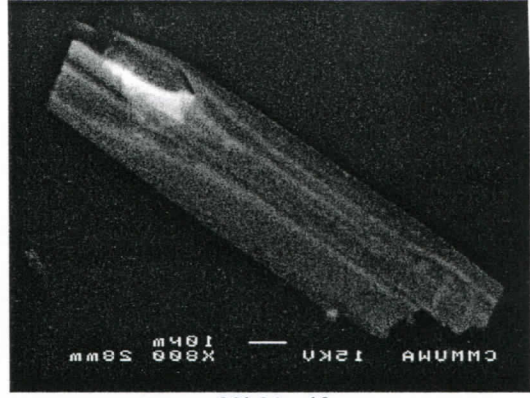
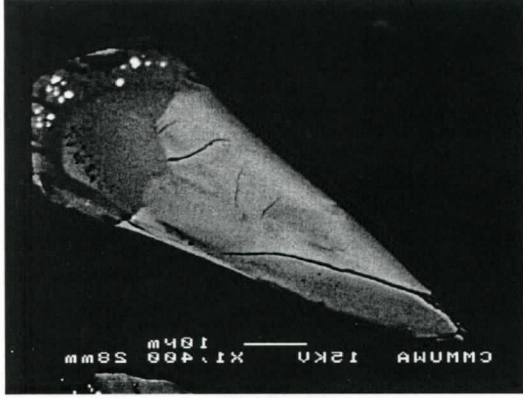


92b01b.tif



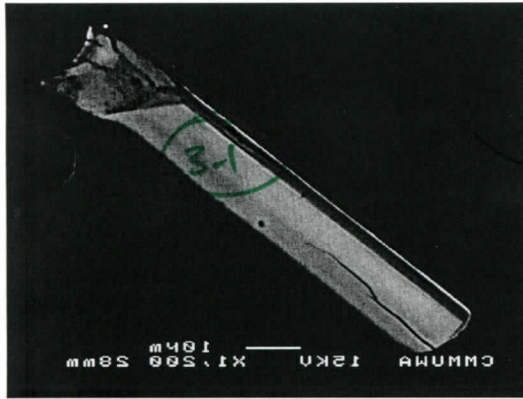
92b01c.tif



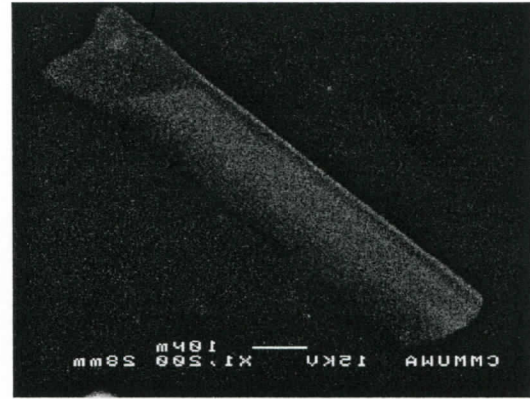
92b02b.tif



92b02c.tif



92b03b.tif



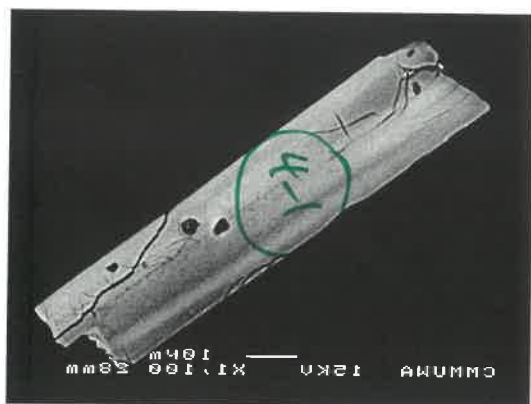
92b03c.tif

Too thin

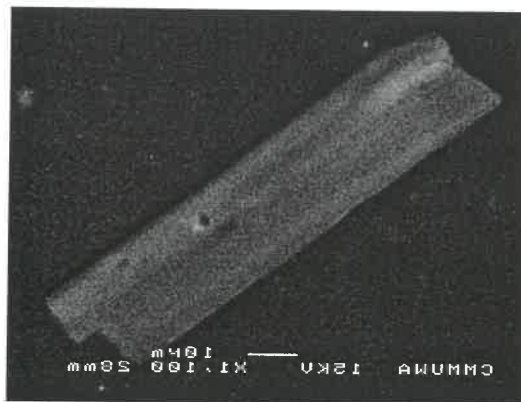
3

B92 B: BWRCD 2726B

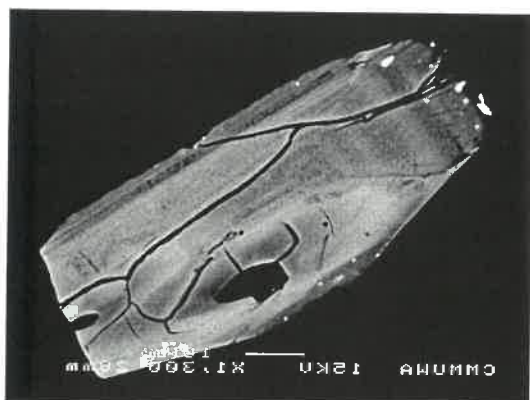
very light



92b04b.tif



92b04c.tif

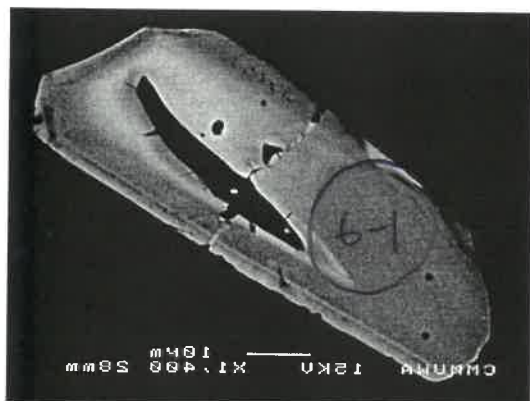


92b05b.tif



92b05c.tif

9

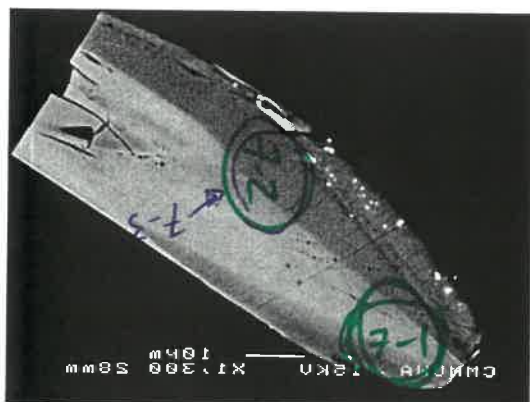


92b06b.tif

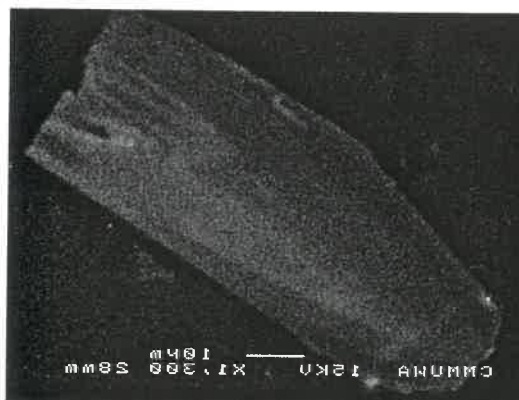


92b06c.tif

M. Anahyia



92b07b.tif

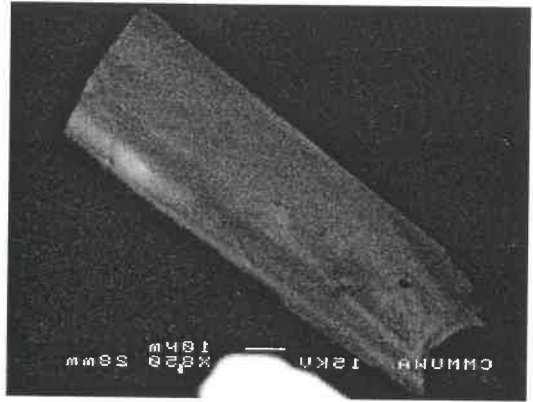


92b07c.tif

nearby

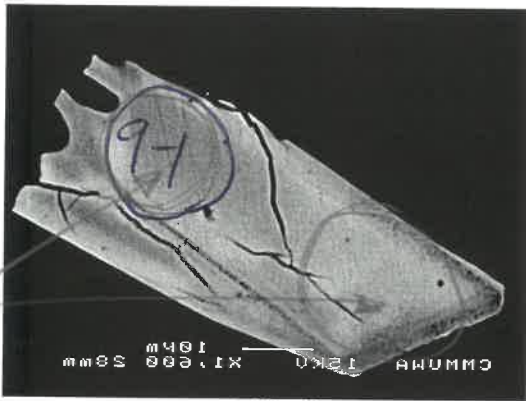


92b08b.tif

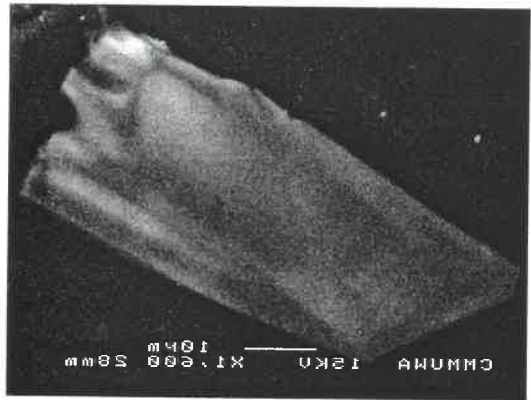


92b08c.tif

*Not possible.
Grain heavily
pitted from
previous
analysis spots*

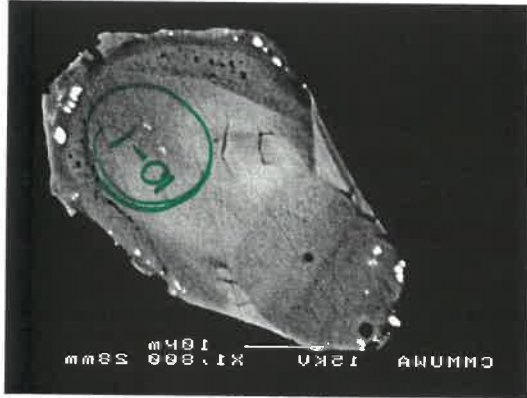


92b09b.tif



92b09c.tif

high U



92b10b.tif

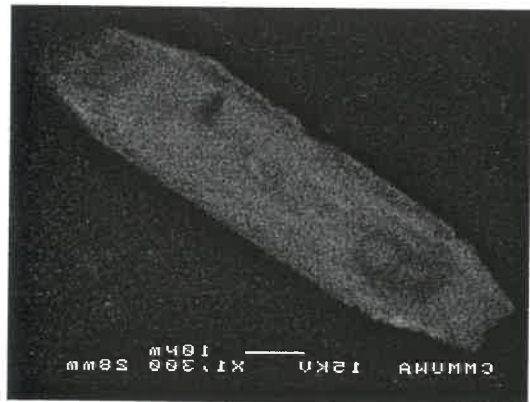


92b10c.tif

*high U
1988-9*

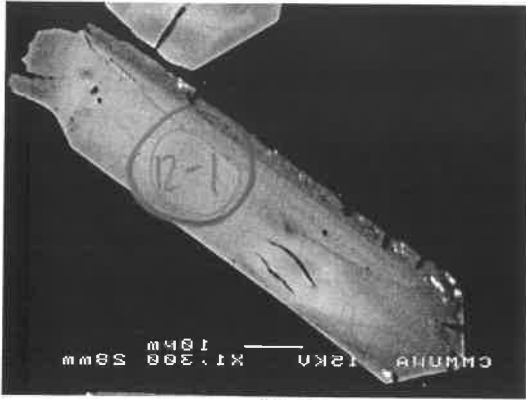


92b11b.tif



92b11c.tif

+2

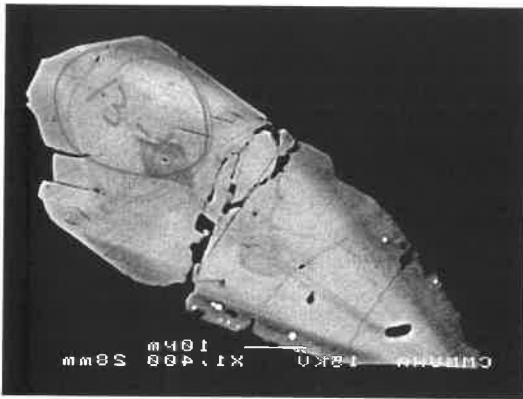


92b12b.tif

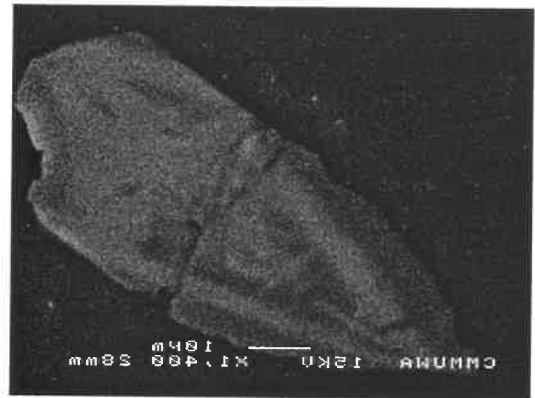


92b12c.tif

*1

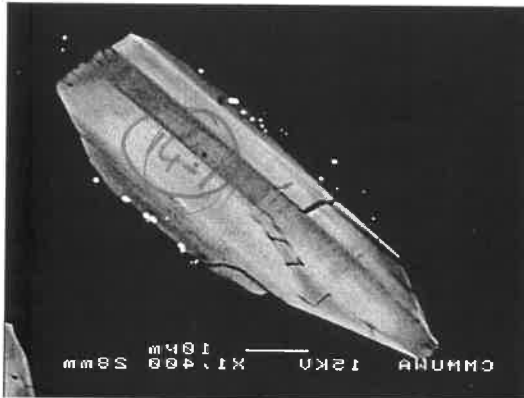


92b13b.tif

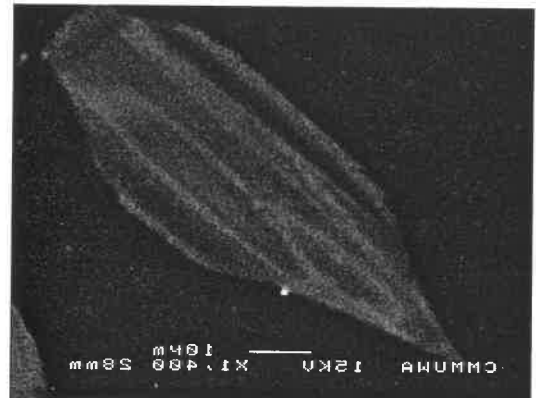


92b13c.tif

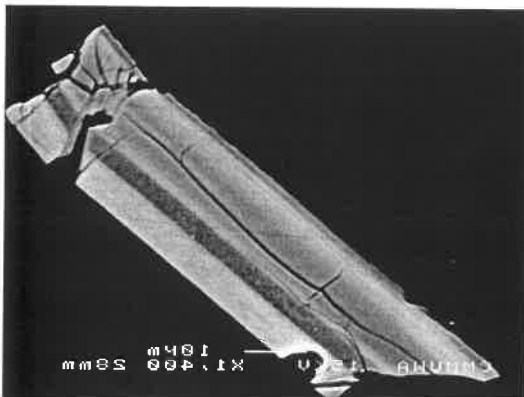
?



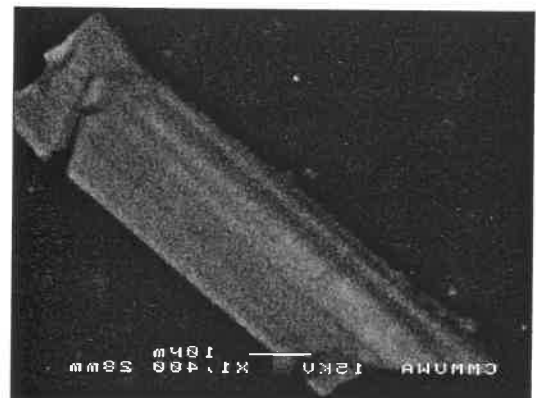
92b14b.tif



92b14c.tif



92b15b.tif



92b15c.tif