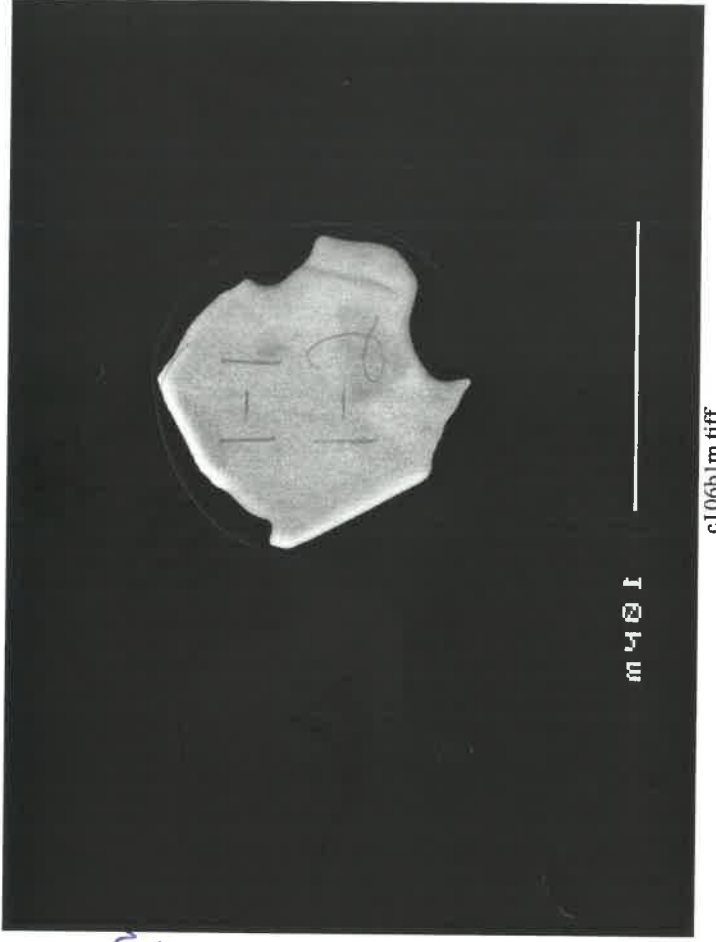


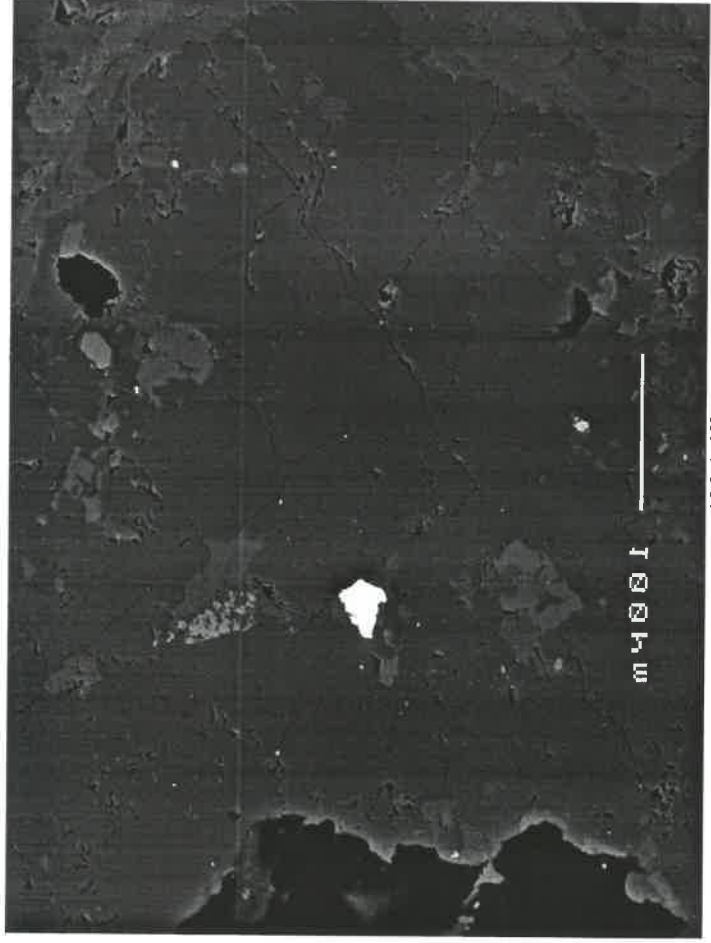
c106a1.m.tiff

*Handwritten notes:*  
A  
 $26737+14 = 1-1$   
 $26447+32 = 1-2$

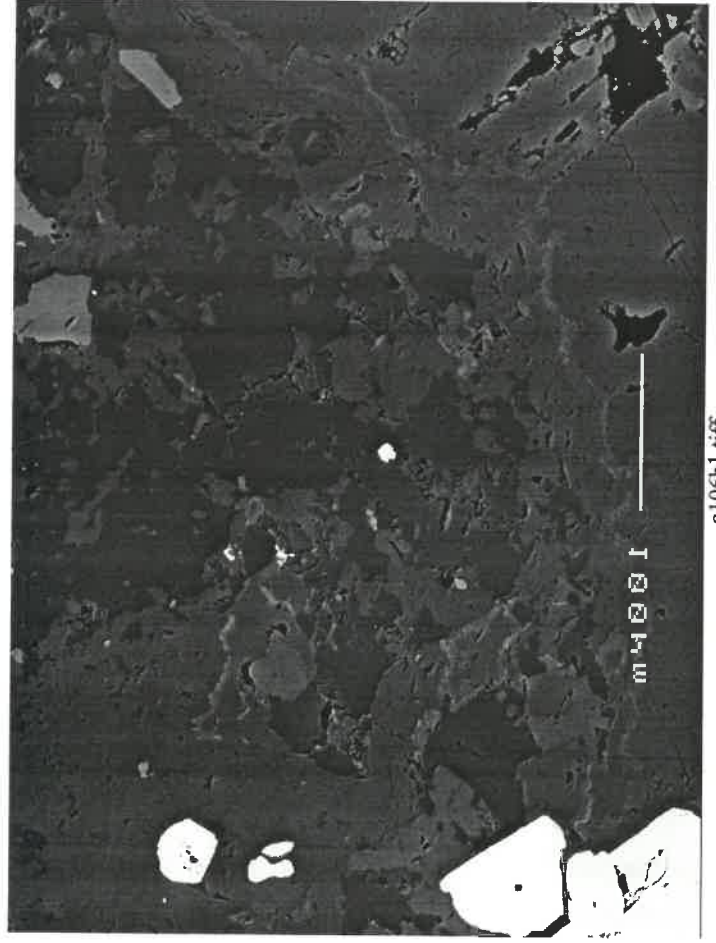


c106b1.m.tiff

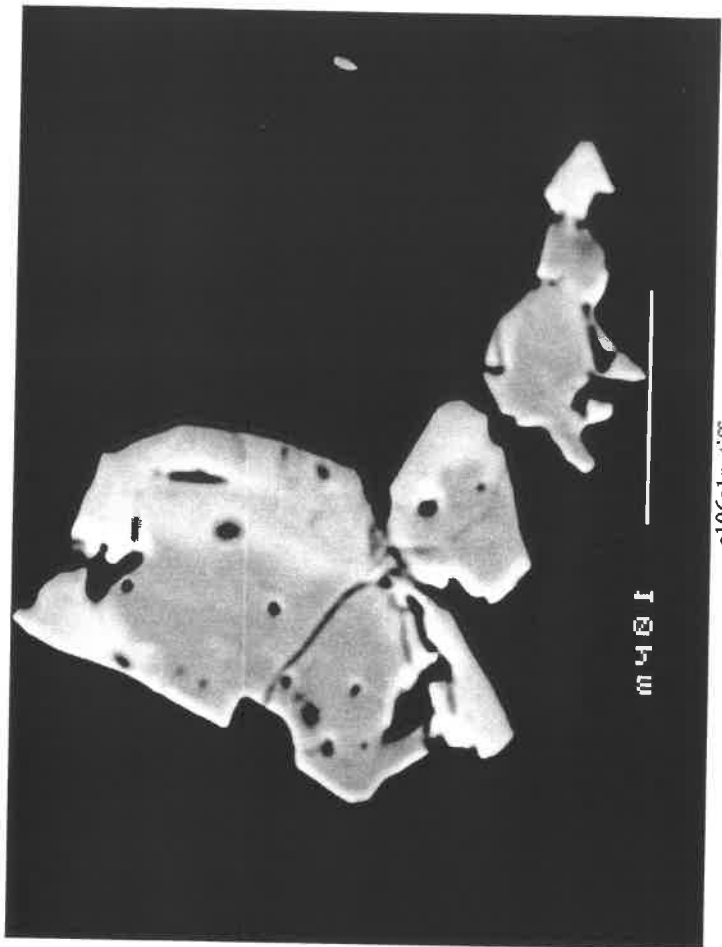
*Handwritten notes:*  
B  
 $2727+46 = 1-1$   
 $2678+36 = 1-2$



c106a1.tiff



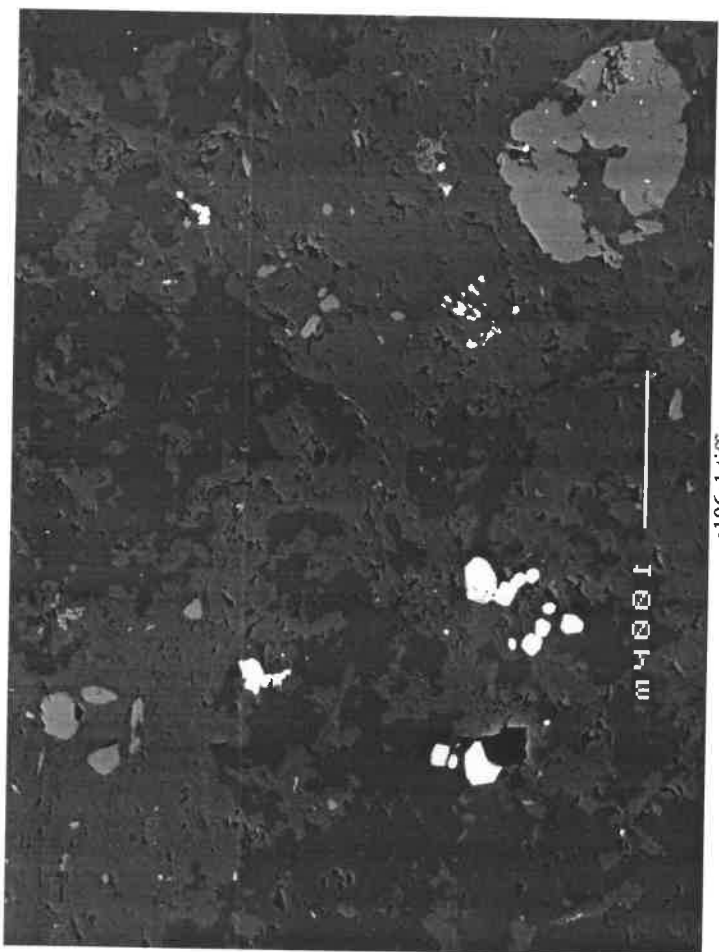
c106b1.tiff



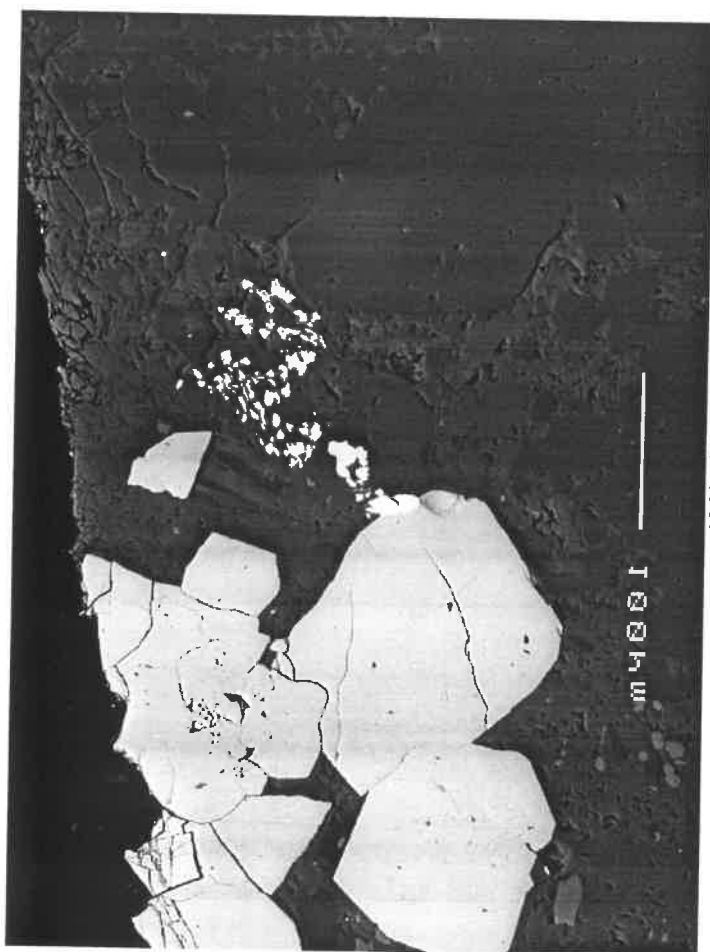
c106c1m.tif



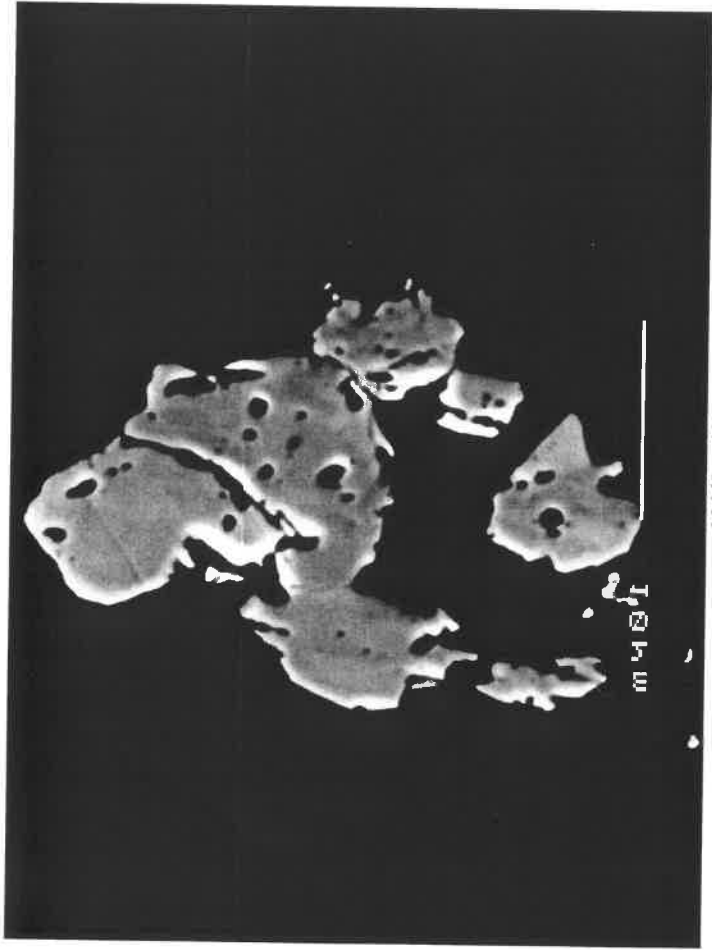
c106d1m.tif



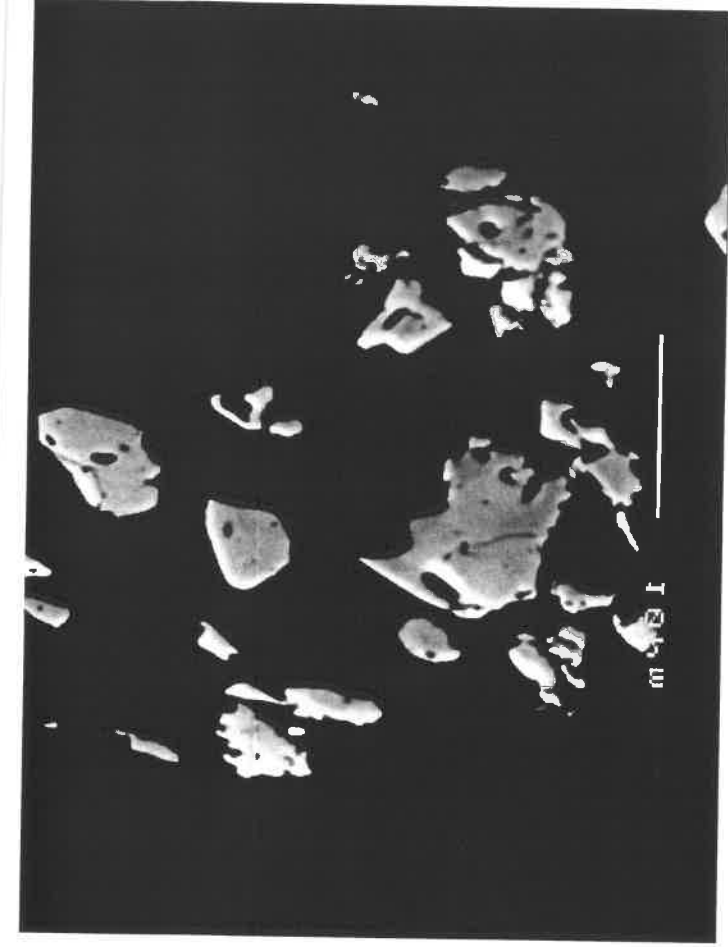
c106c1.tif



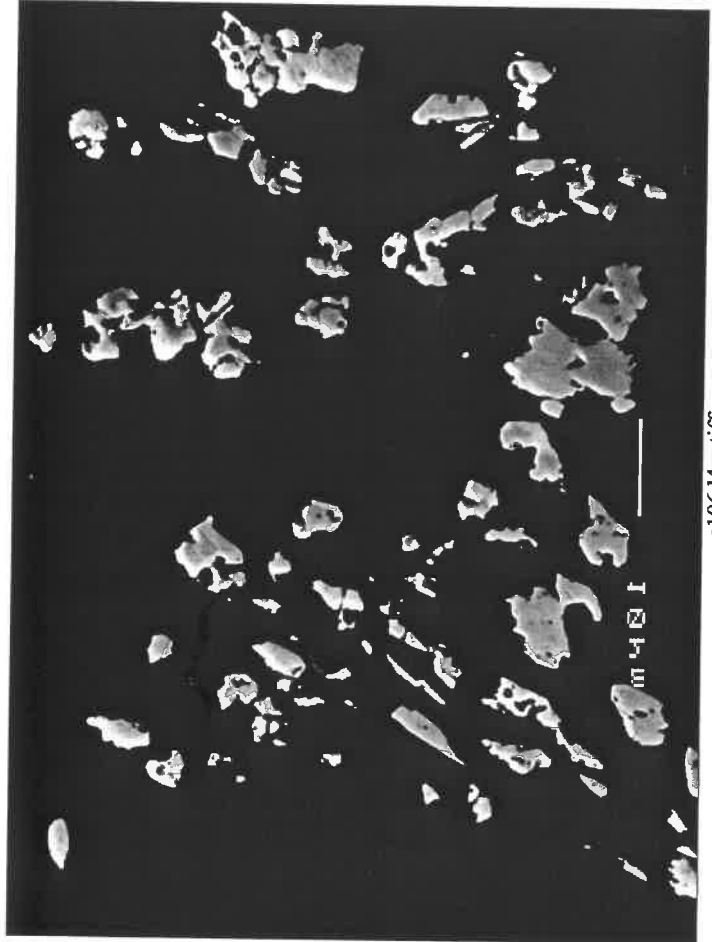
c106d1.tif



c106d2m.tif



c106d3m.tif



c106d4m.tif

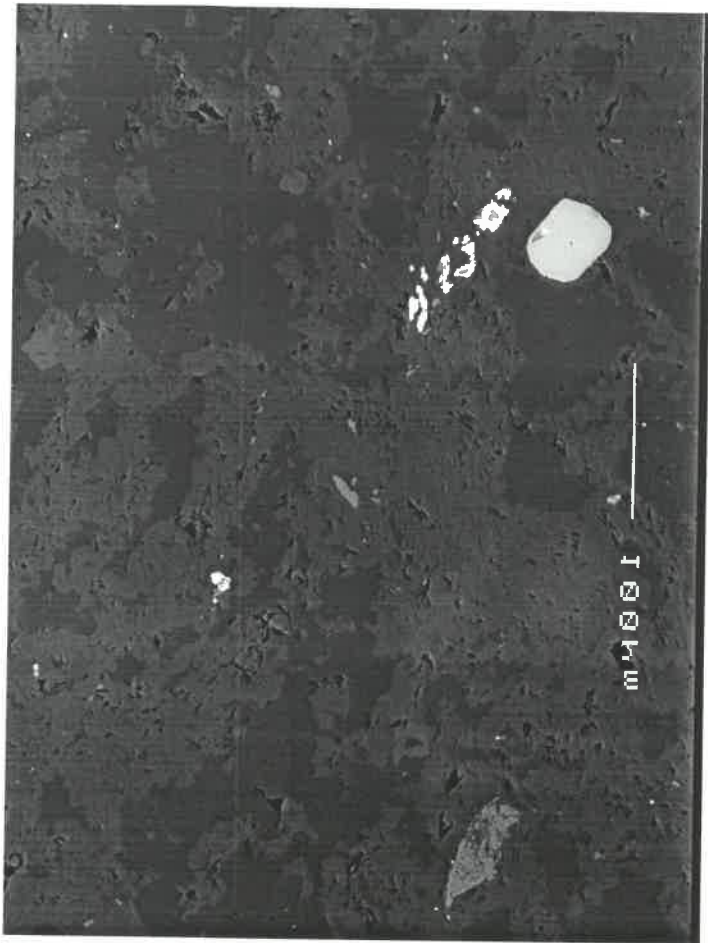


c106e1.tif

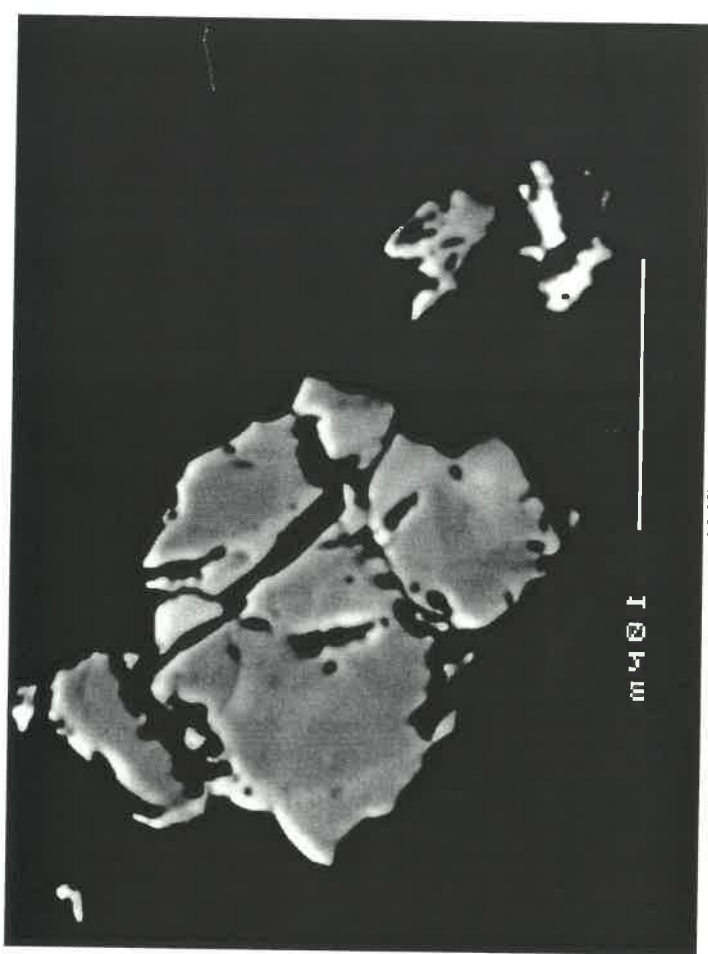
3 ←

1 ←

2 ←

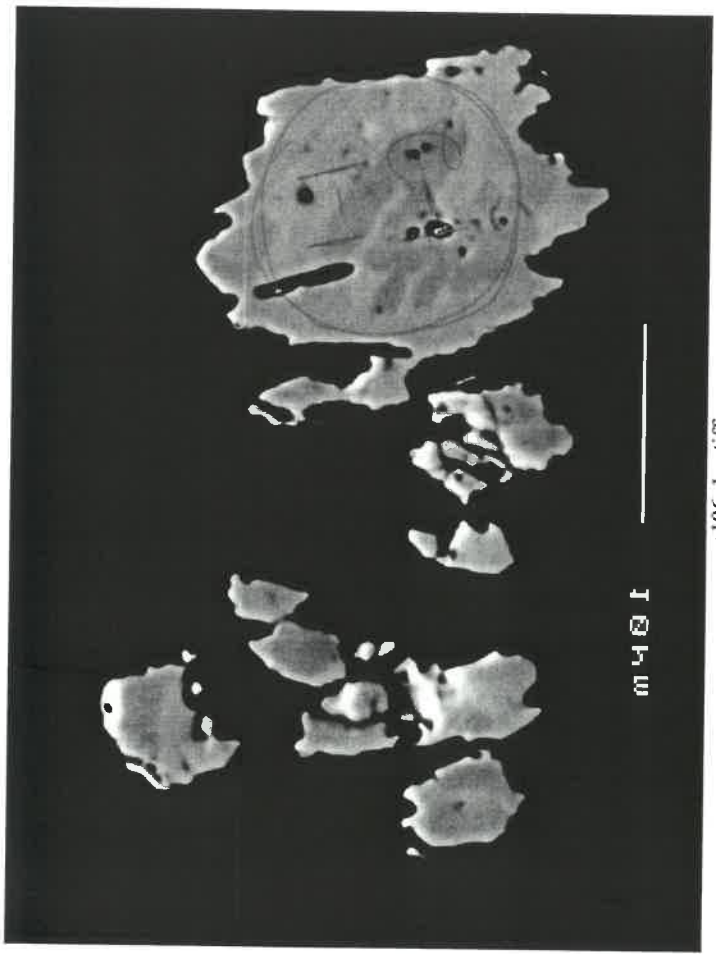


c106f1-3.tiff

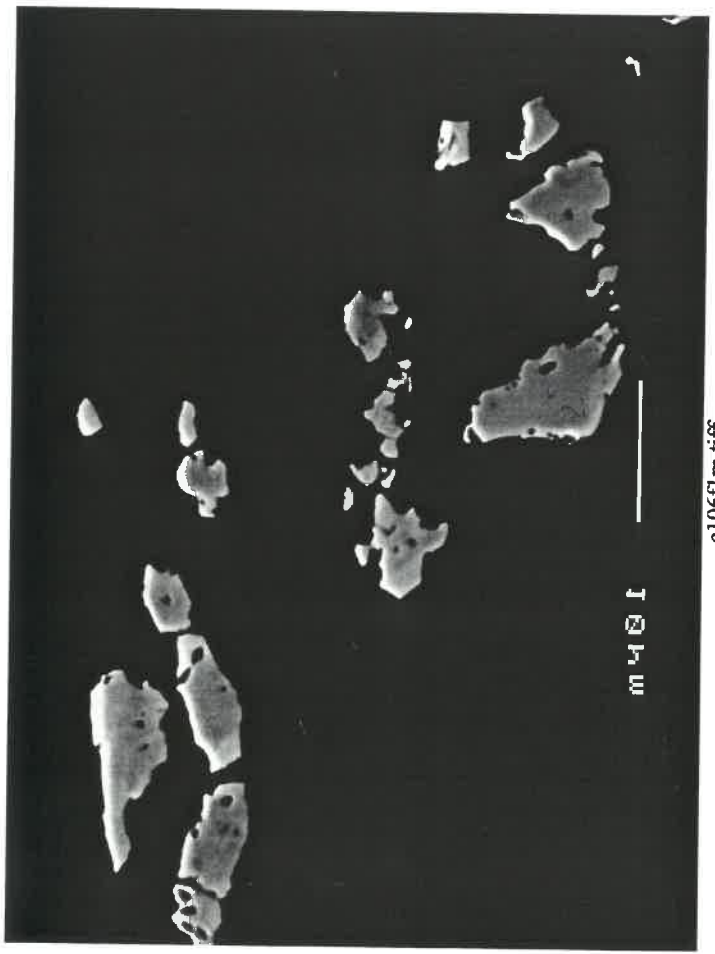


c106f2m.tiff

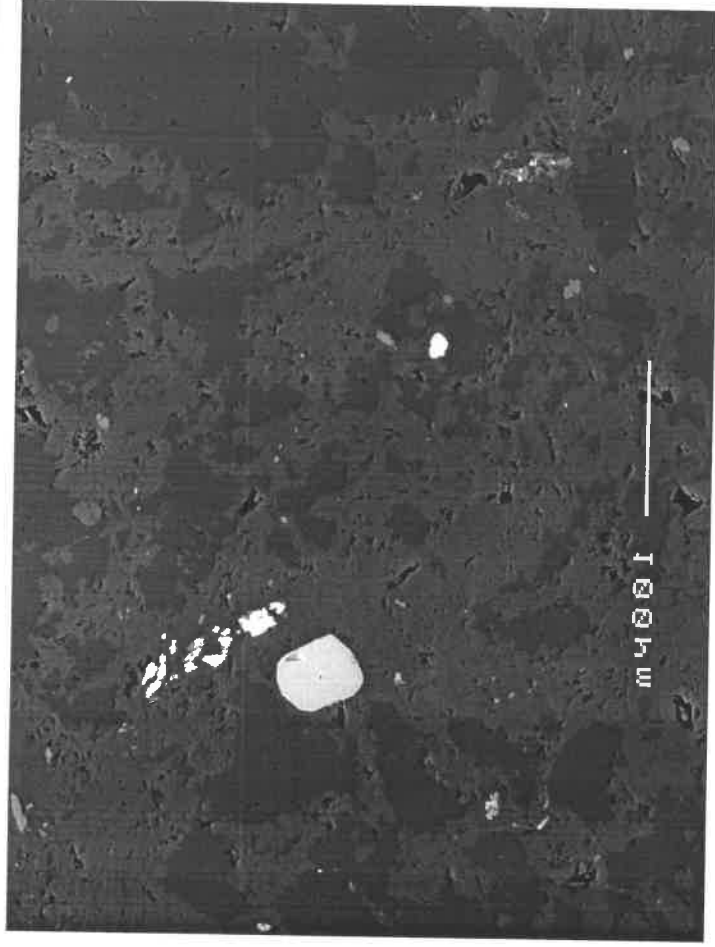
~~2.78E2~~



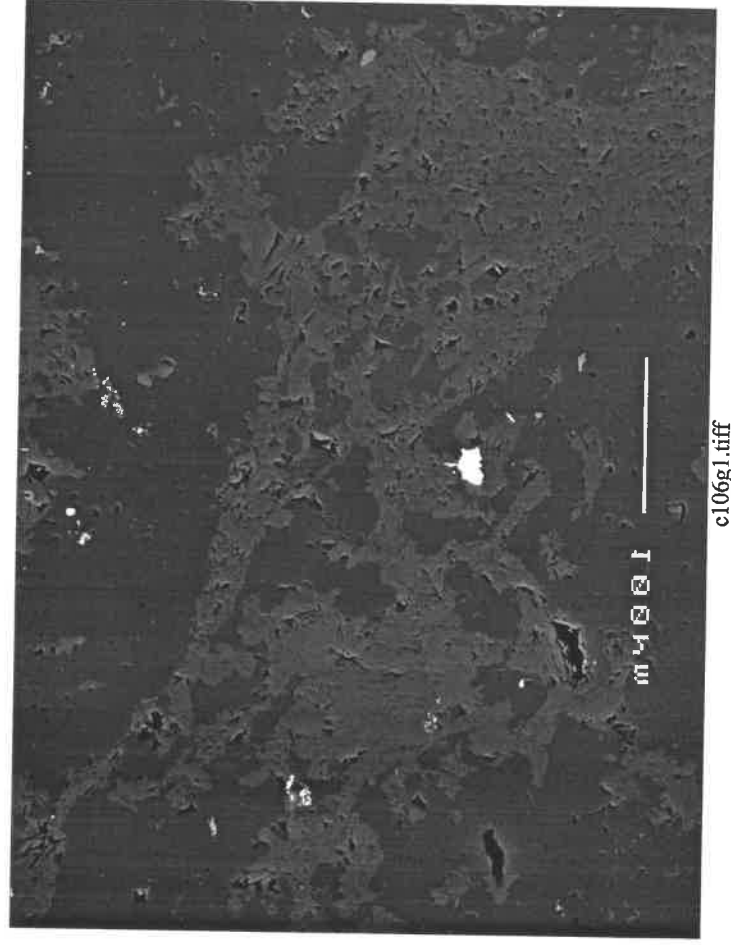
c106e1m.tiff



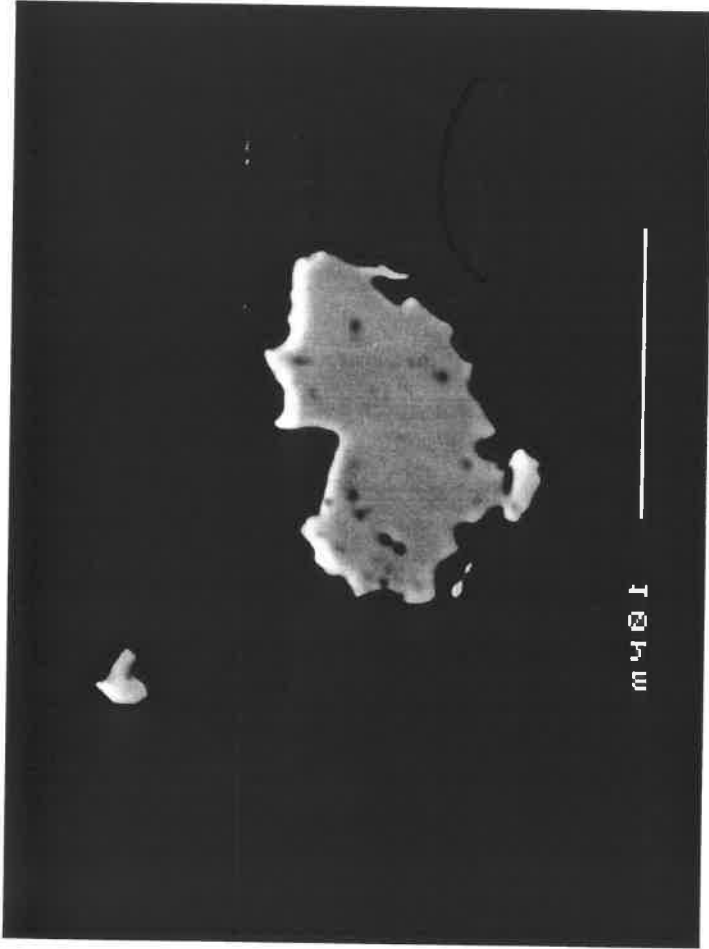
c106f1m.tiff



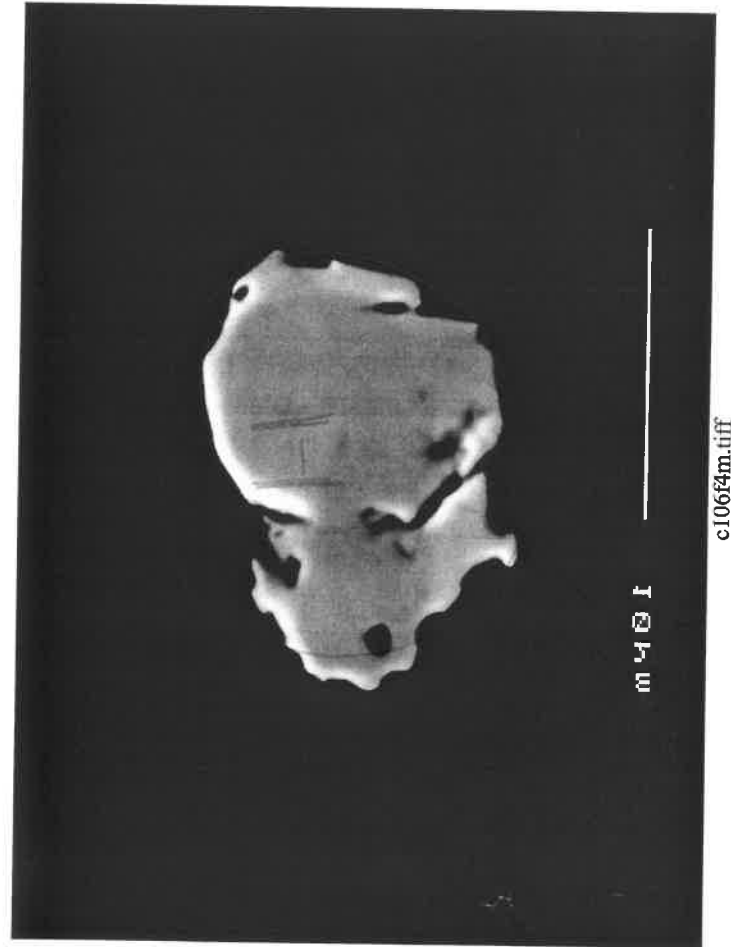
c106f4.tiff



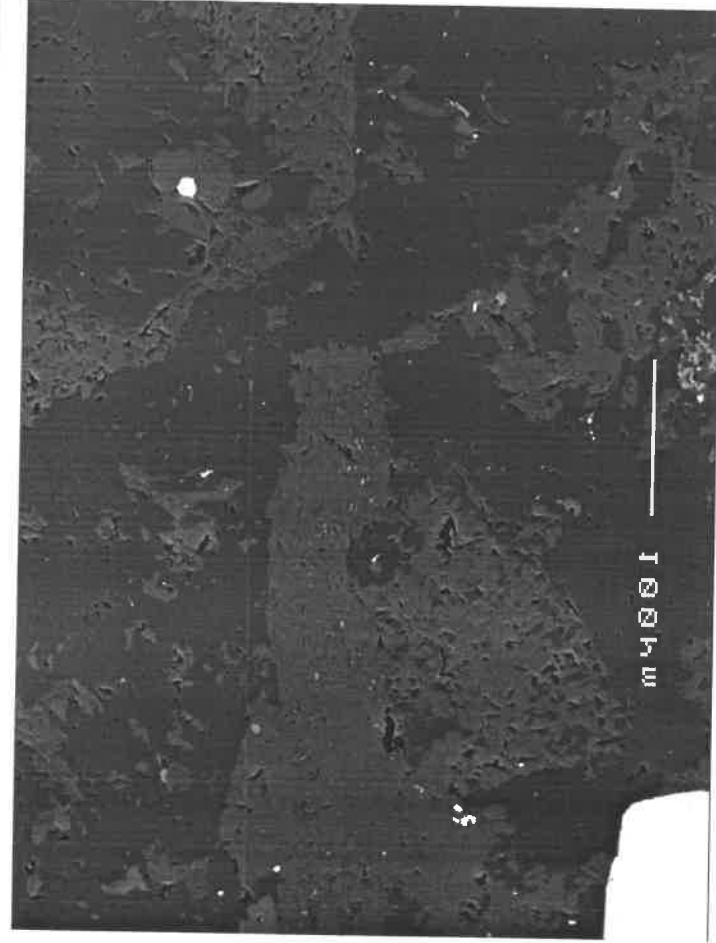
c106g1.tiff



c106E3m.tiff

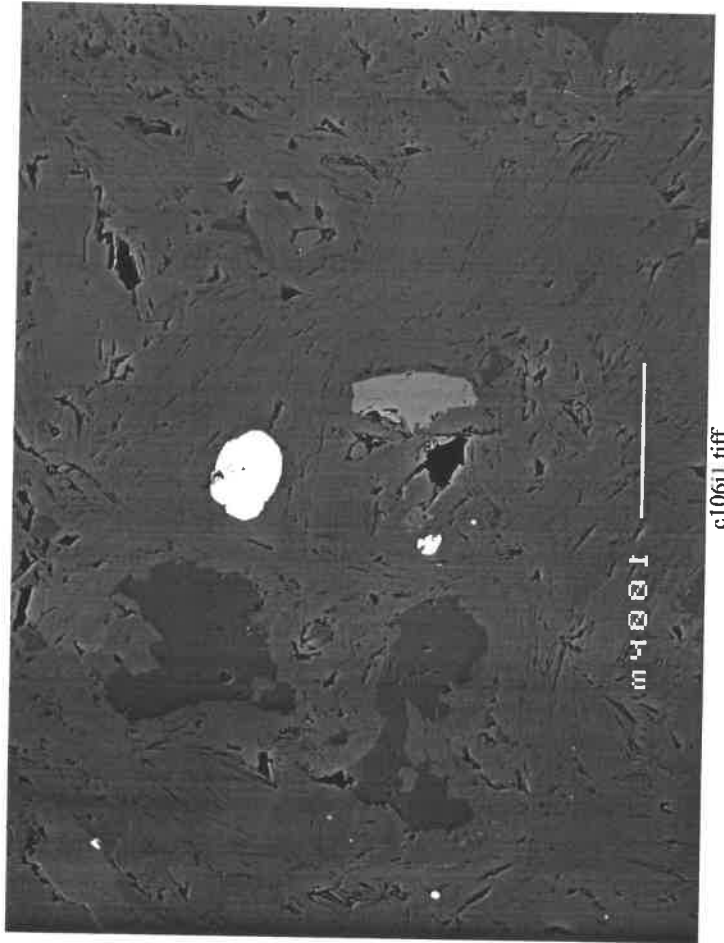


c106f4m.tiff



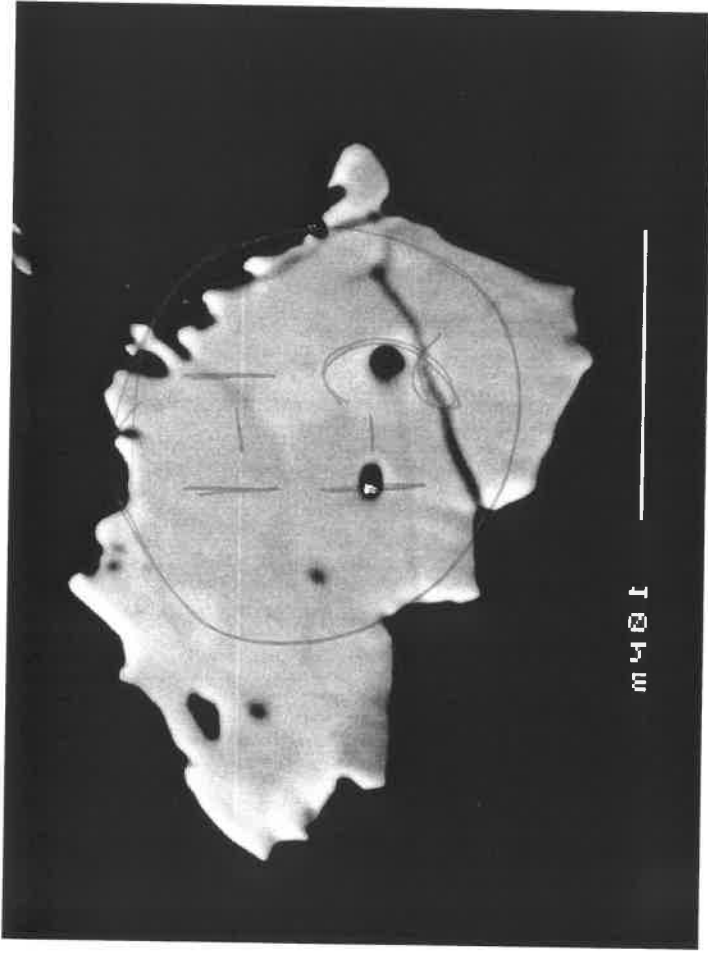
m4001

c106h1.tiff



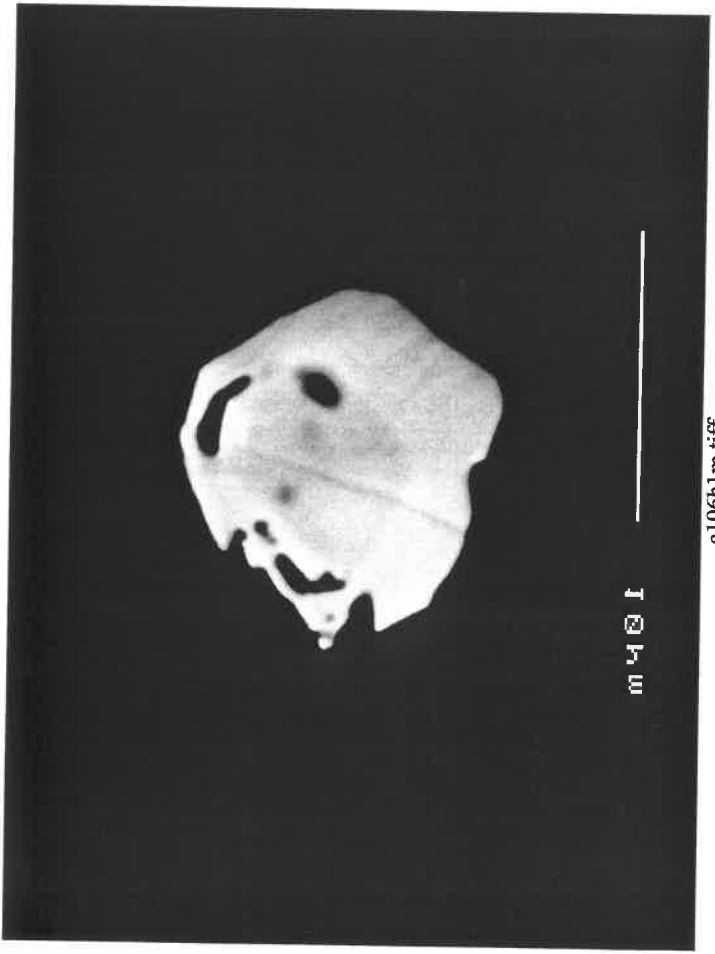
m4001

c106i1.tiff



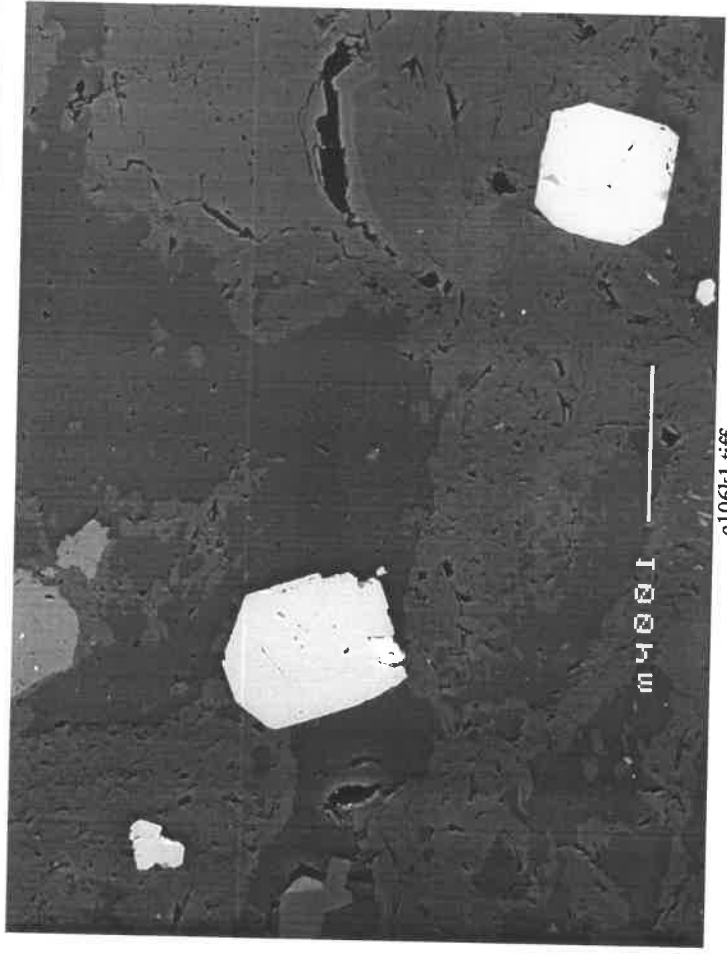
m4011

c106g1m.tiff



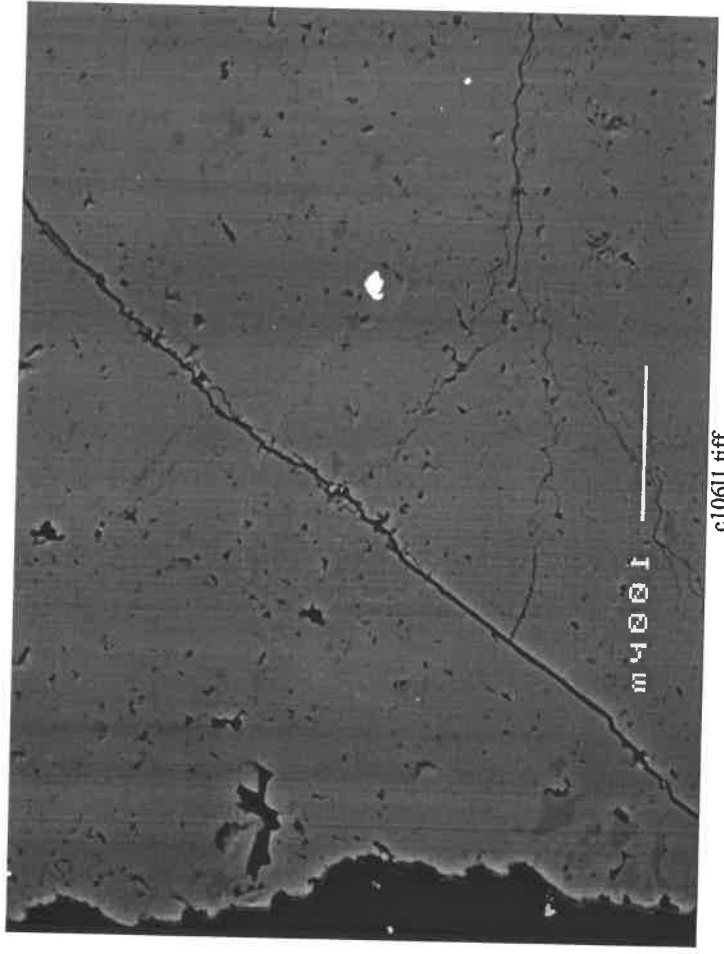
m4011

c106h1m.tiff



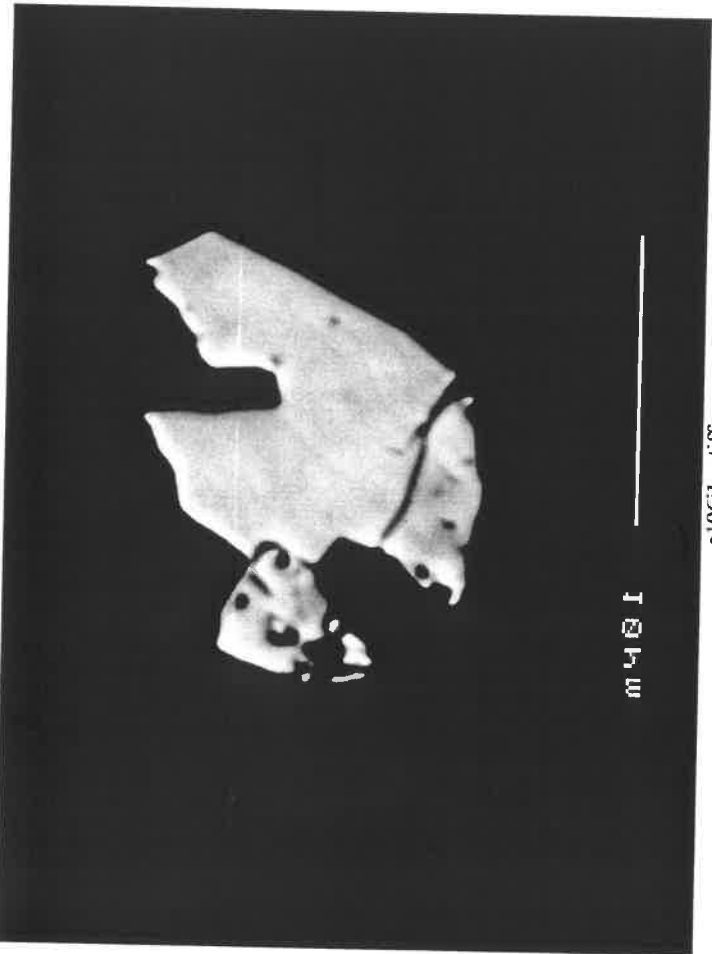
m4001

c106k1.tiff



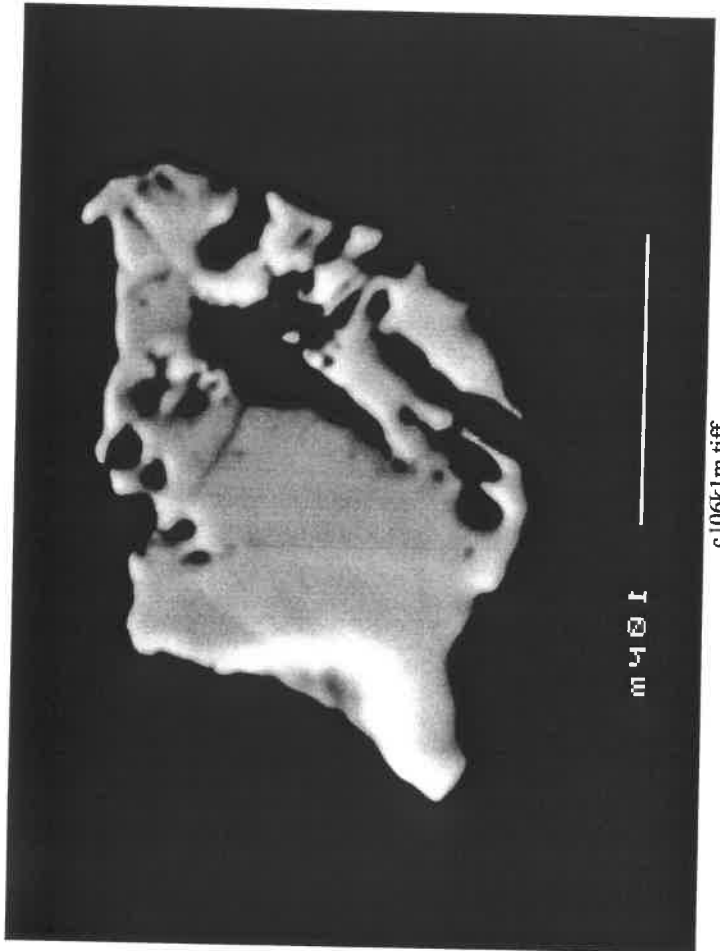
m4001

c106l1.tiff



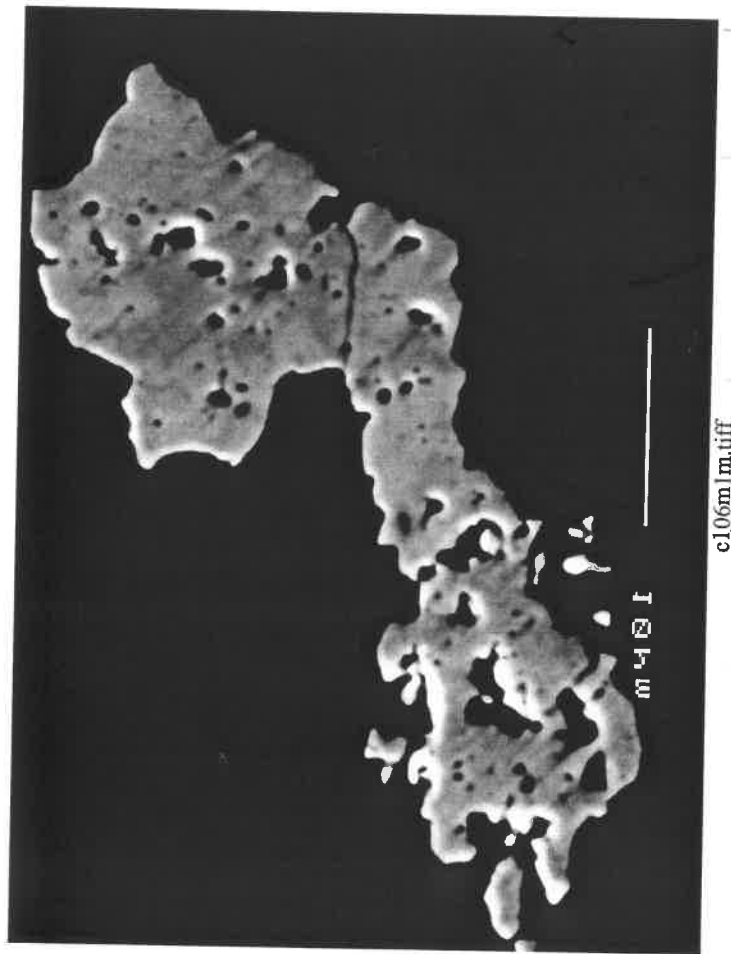
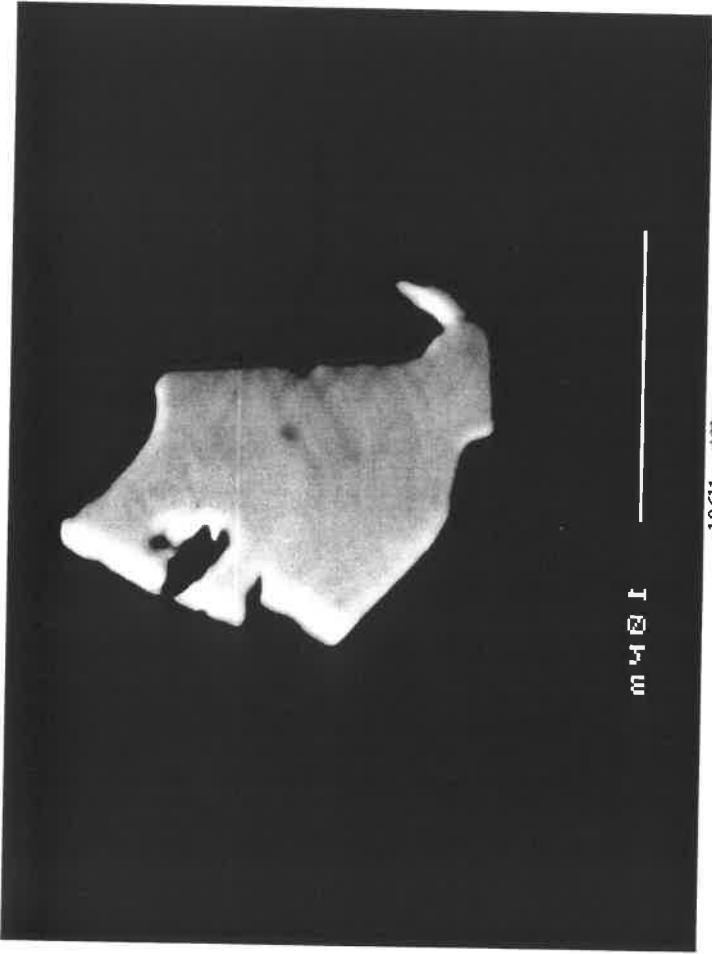
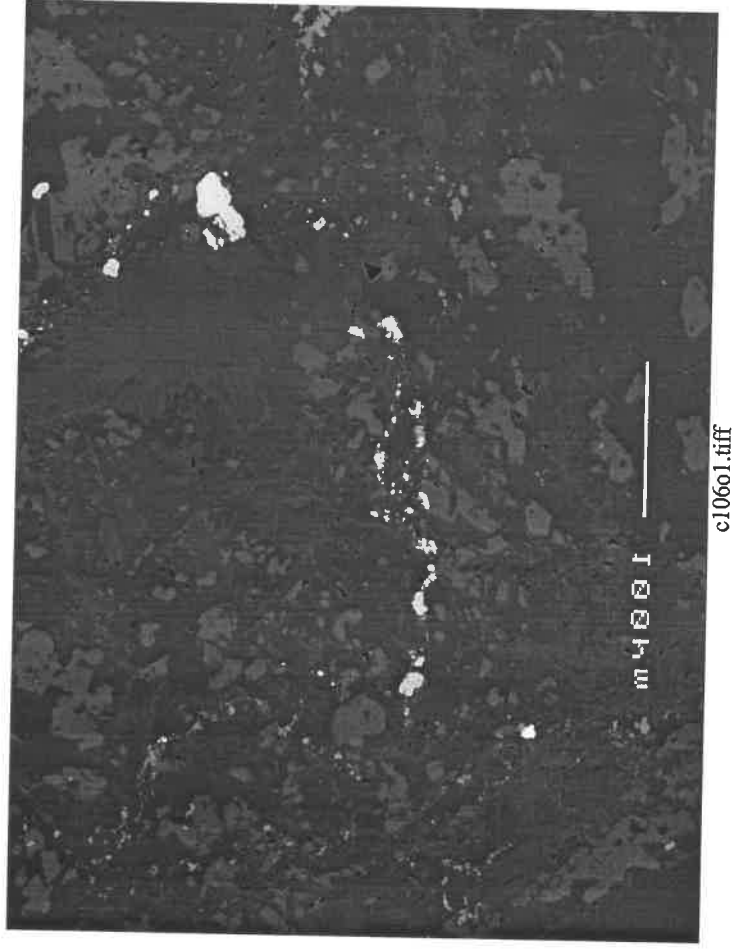
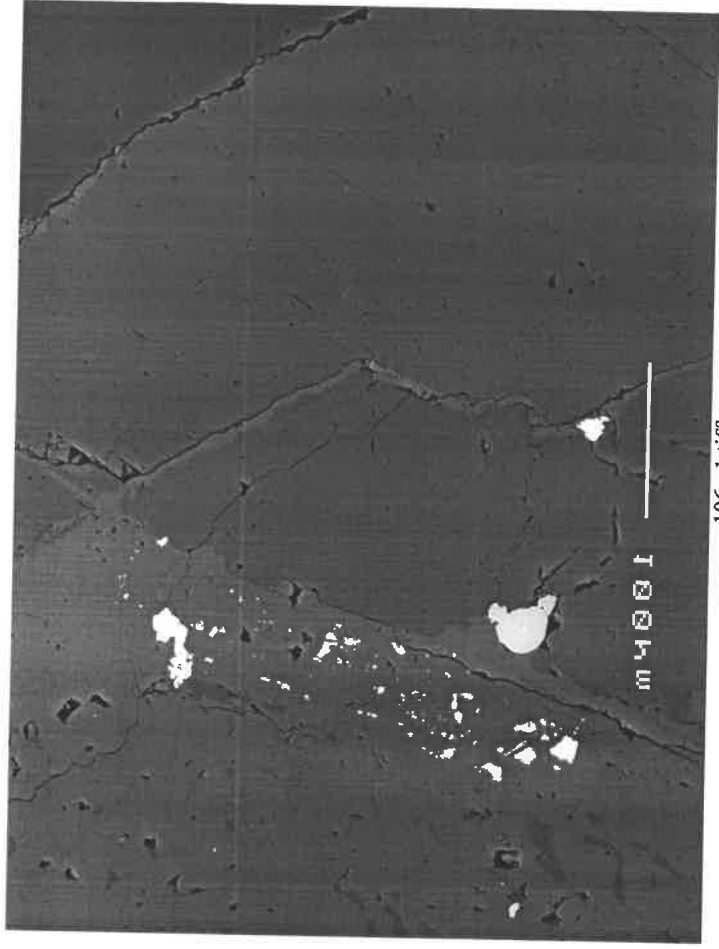
m401

c106il.m.tiff



m401

c106k1.m.tiff

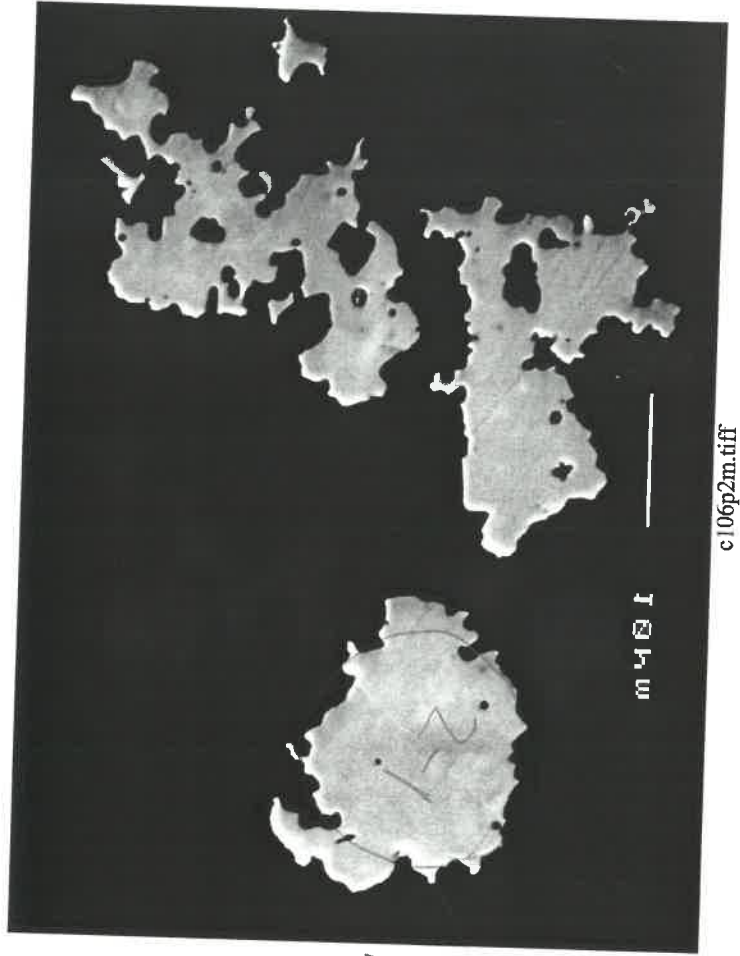


Gymer 300 level on Mand to analyze

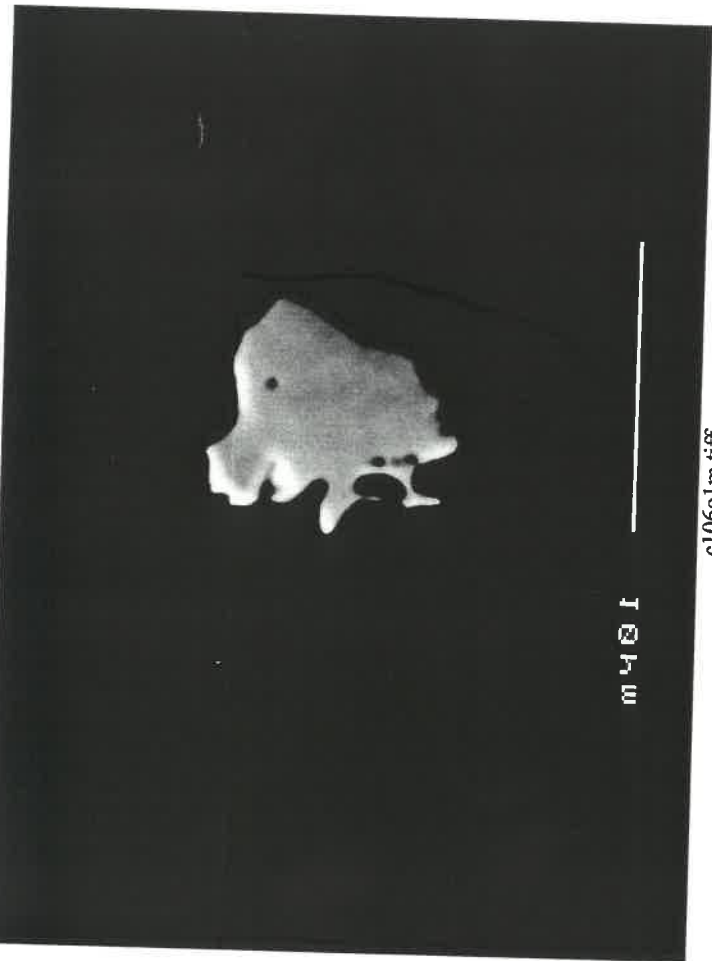




c106p1.tiff



c106p2m.tiff



c106o1m.tiff



c106p1m.tiff