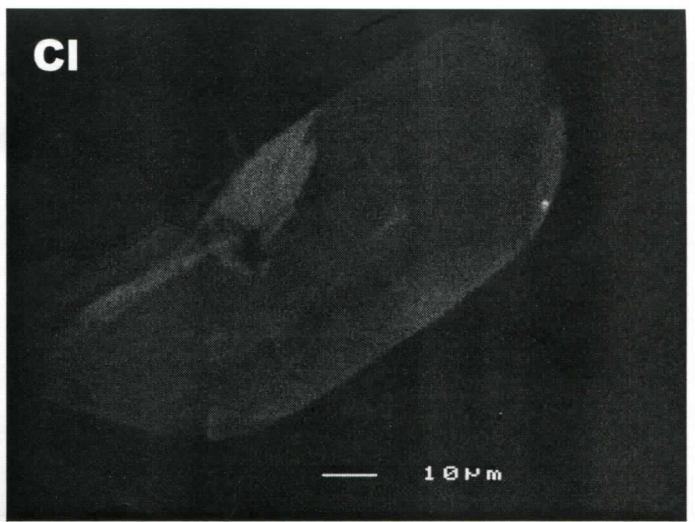
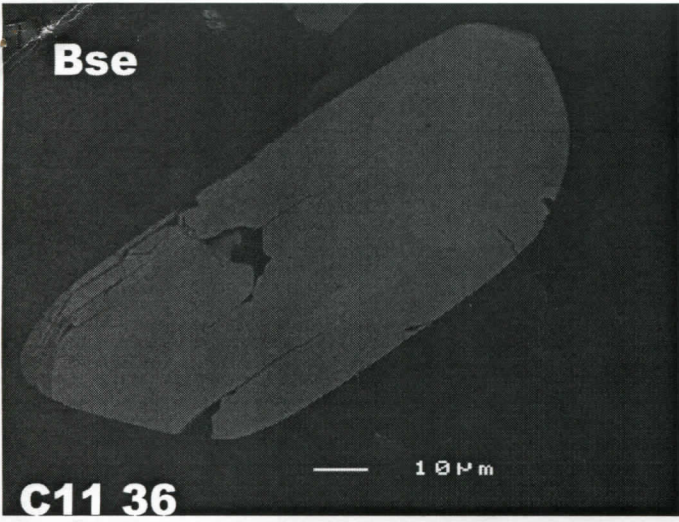


Bse

CI

Pop B
Ph 36
*
↓
Can't do
another
pot

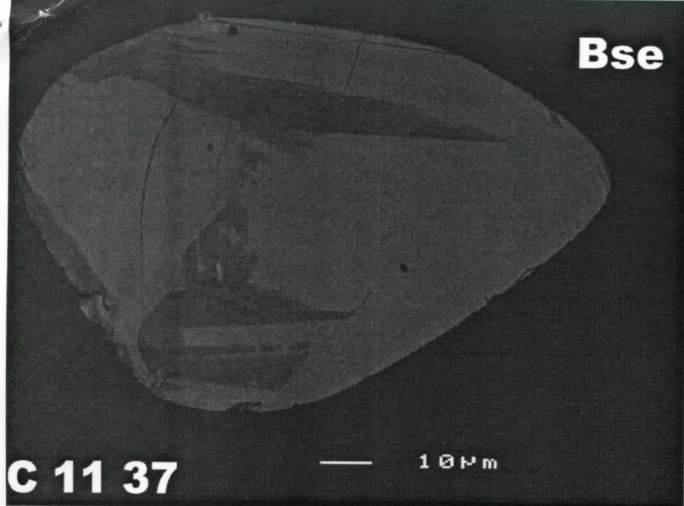


C11 36

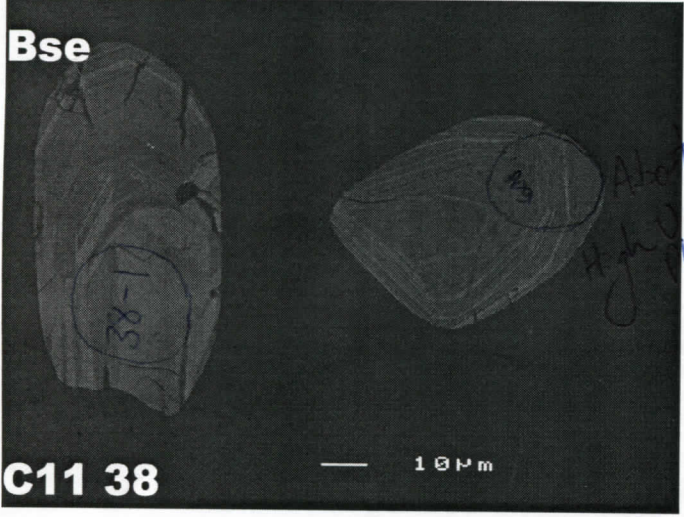
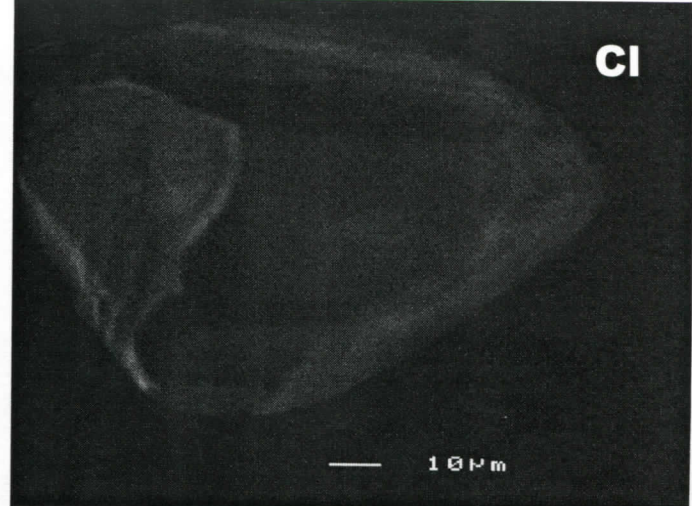
10 μm

10 μm

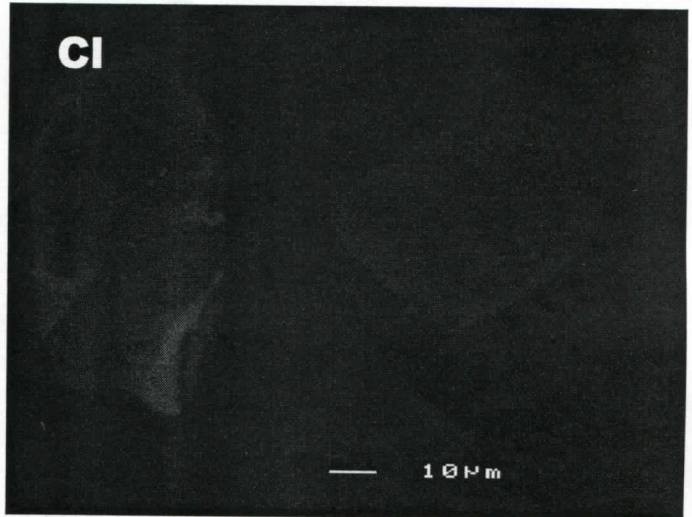
Pop B
p440



C 11 37

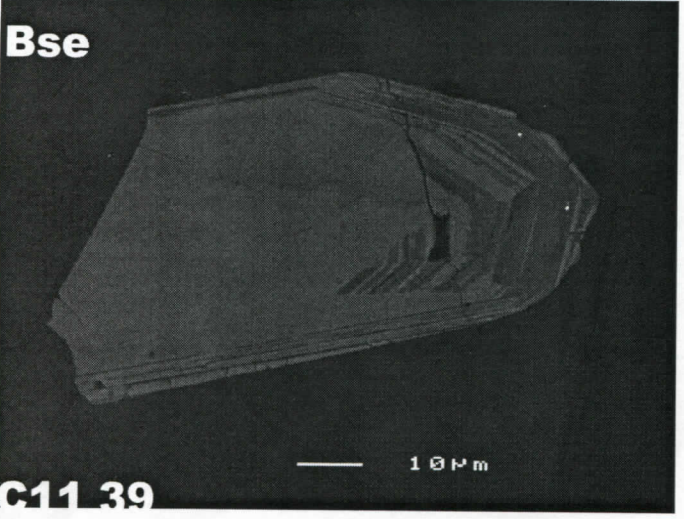


C11 38

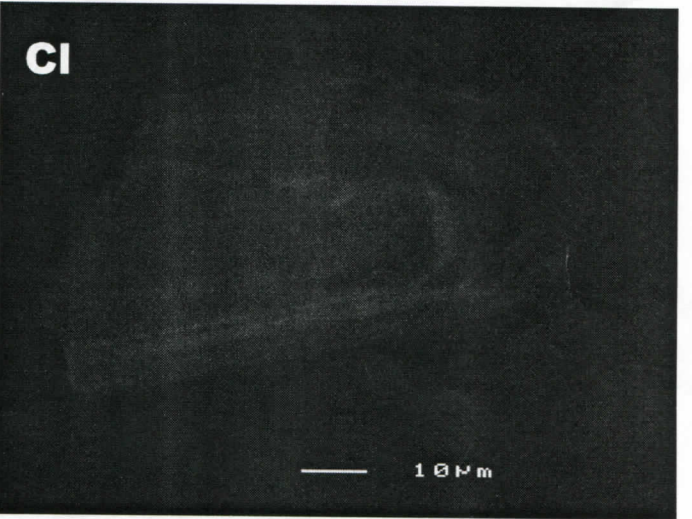


Pop B
p440

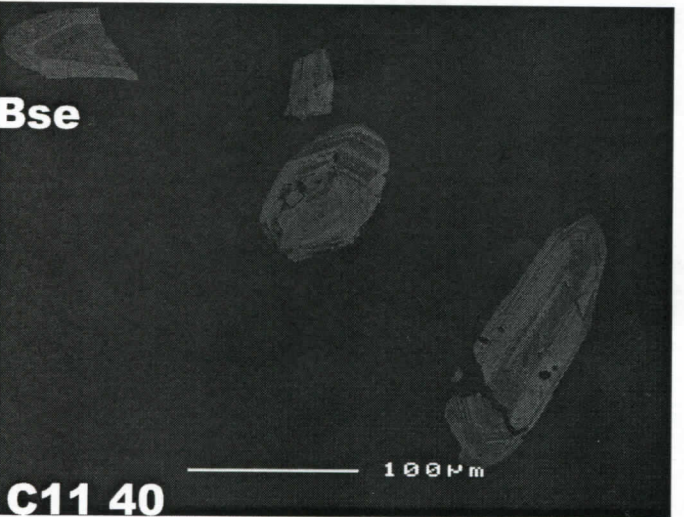
Pop B
p440
*plucker



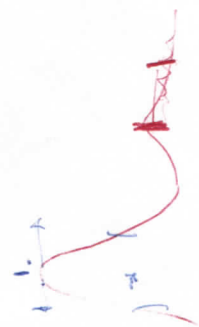
C11 39



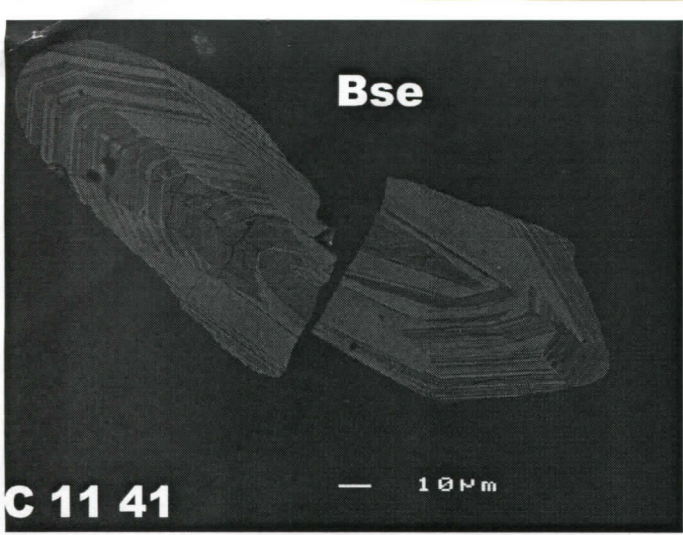
Pop B
p440



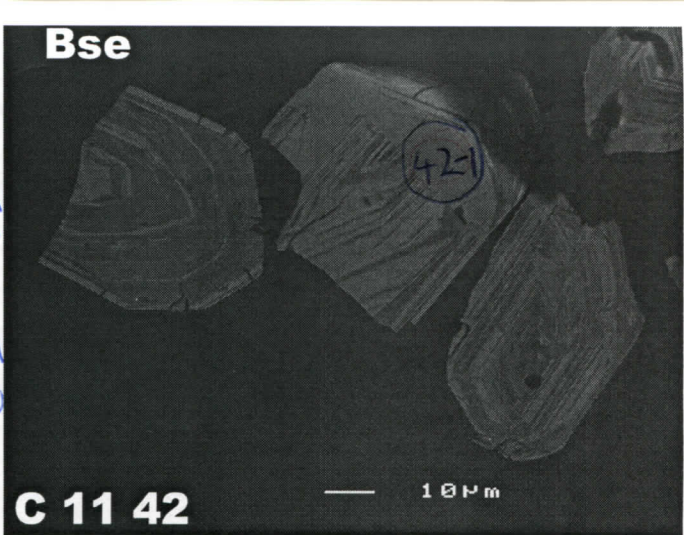
C11 40



Pop B
Ph 50
= grain 1

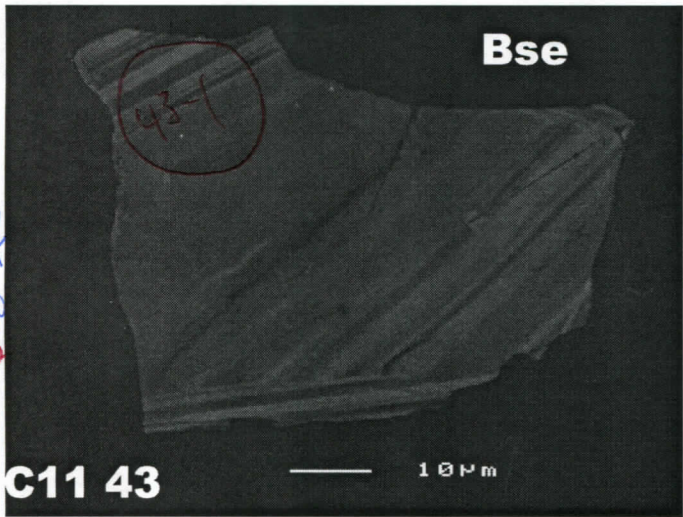


Pop B
Ph 50

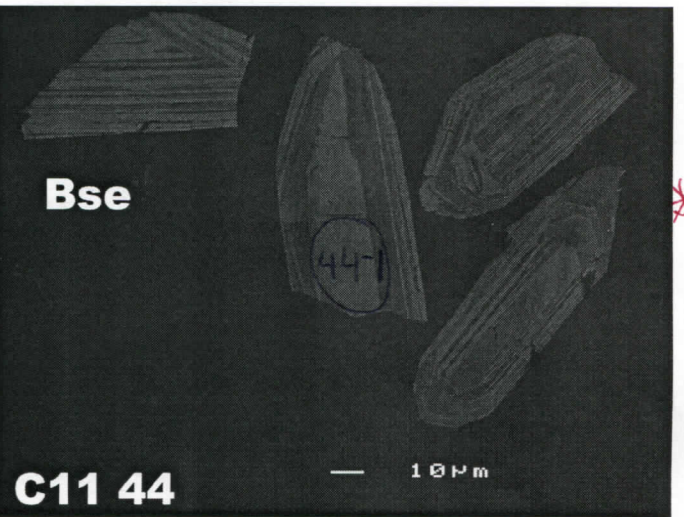


*

Pop B
Ph 50
= grain 2

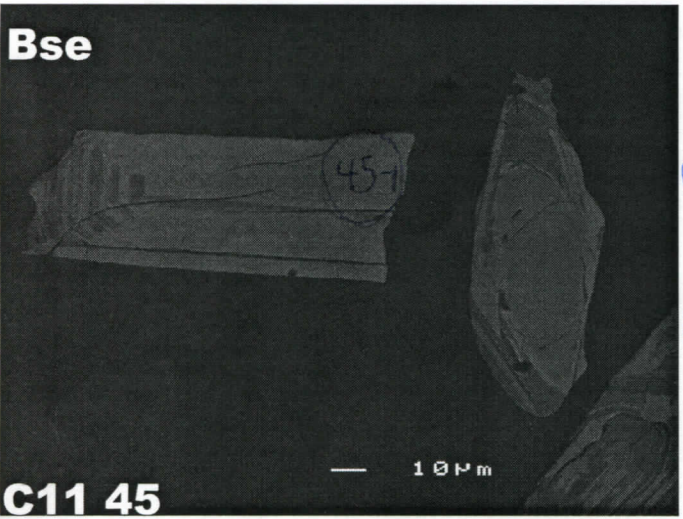


Pop B
Ph 50

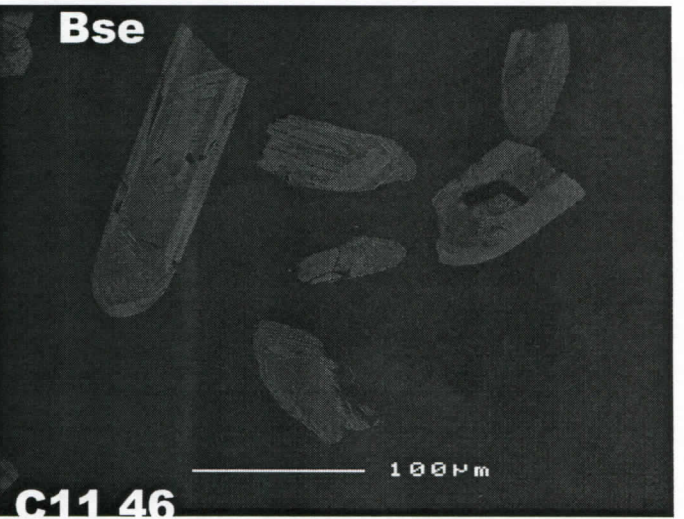


*

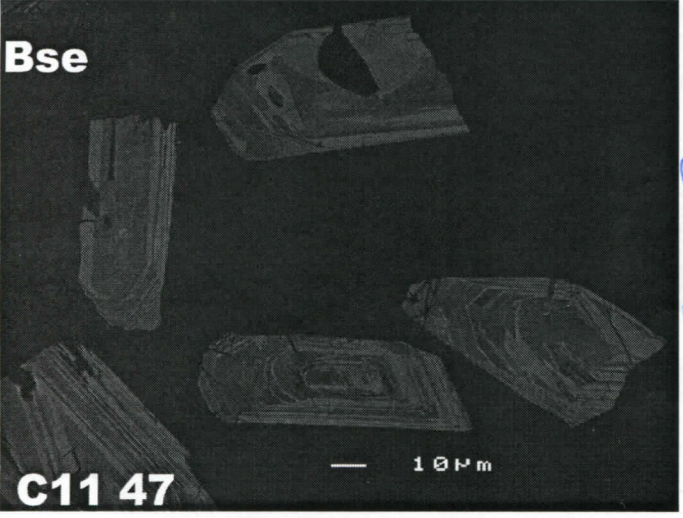
Pop B
Ph 50



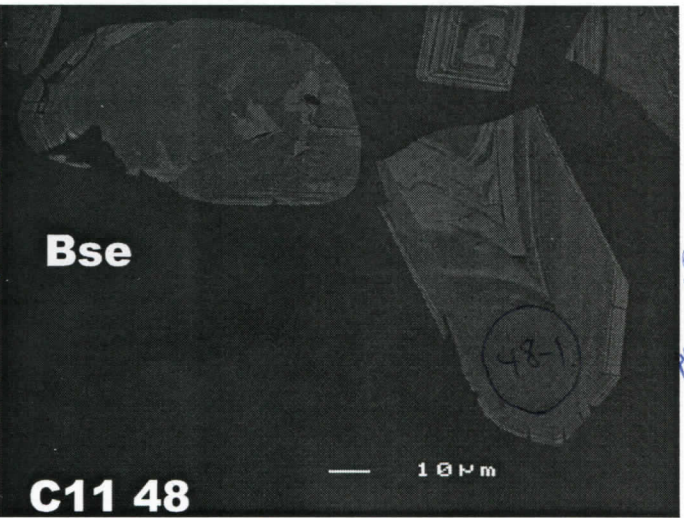
Pop B
Ph 50



Pop B
Ph 50



Pop B
Ph 50



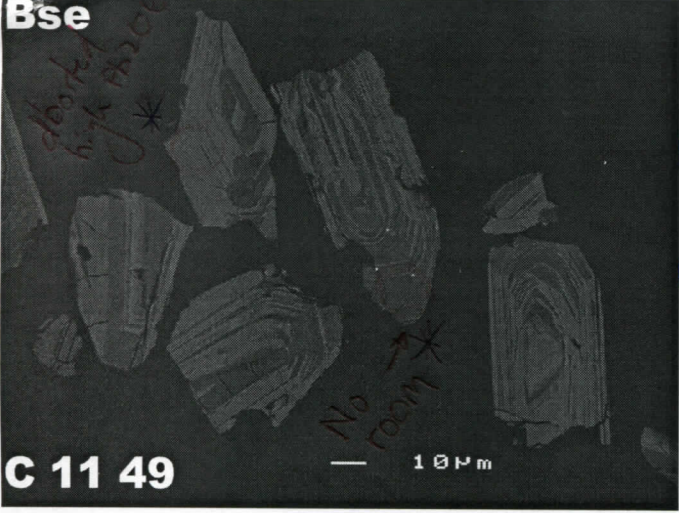
*

aborted
high
#206

Bse

C 11 49

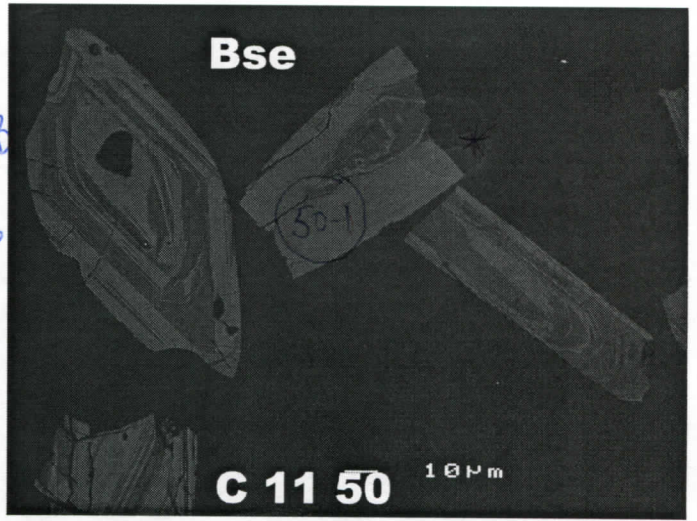
10µm



Bse

C 11 50

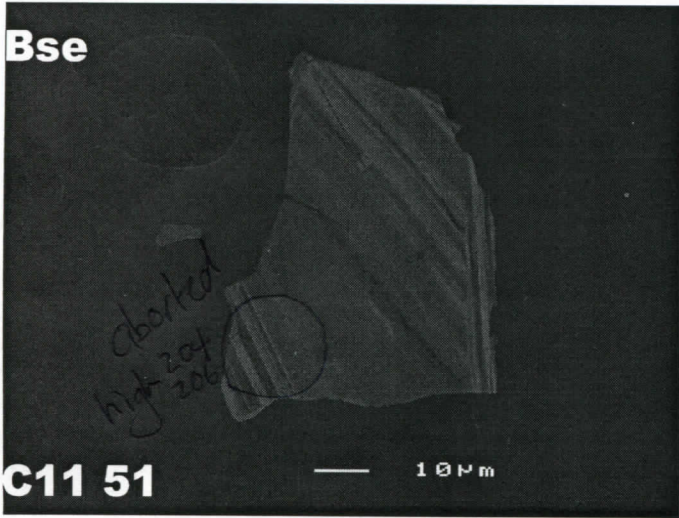
10µm



Bse

C11 51

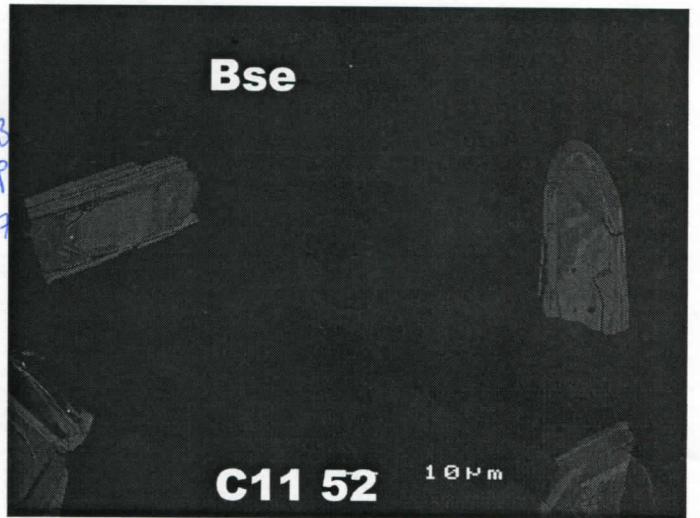
10µm



Bse

C11 52

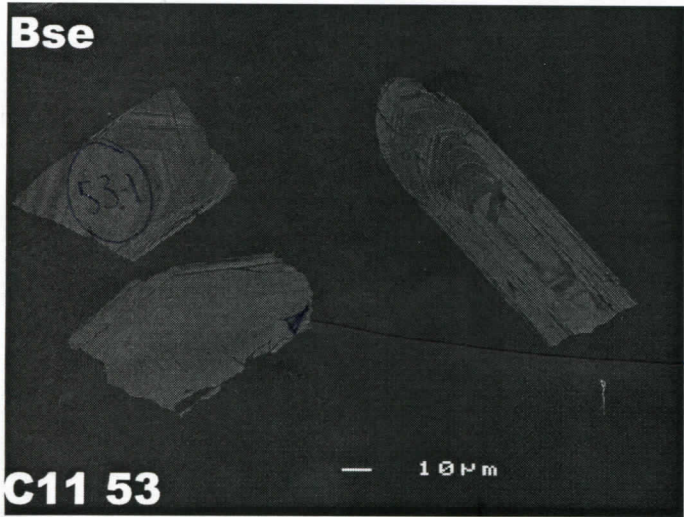
10µm



Bse

C11 53

10µm



Already imaged as grain 6!
ie 6-1
6-2

Pop B
PL50
*

Pop B
PL56

*

Pop B
PL50
*

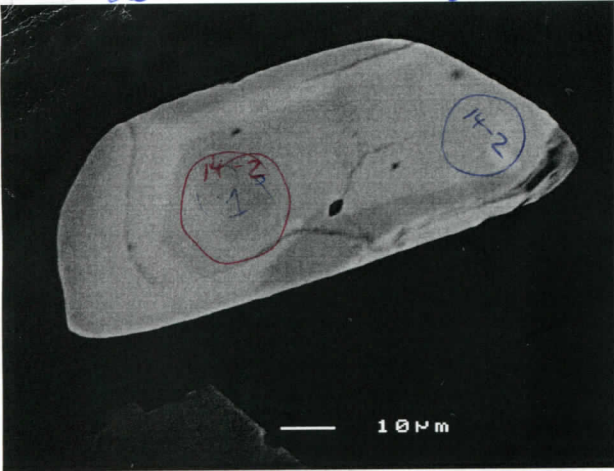
Pop B
PL57

Pop B
PL57
*

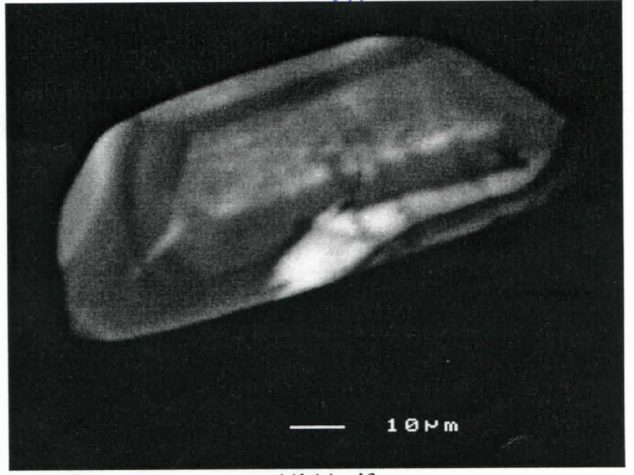
2651 ± 20 ma -3%

C11-b GMFPo3

?XENONIS 2666 ± 109 ma pre-gold pre-D2



14-1
2651 ± 20 3
14-3
2665 ± 23 3
14-2
2663 ± 23 4

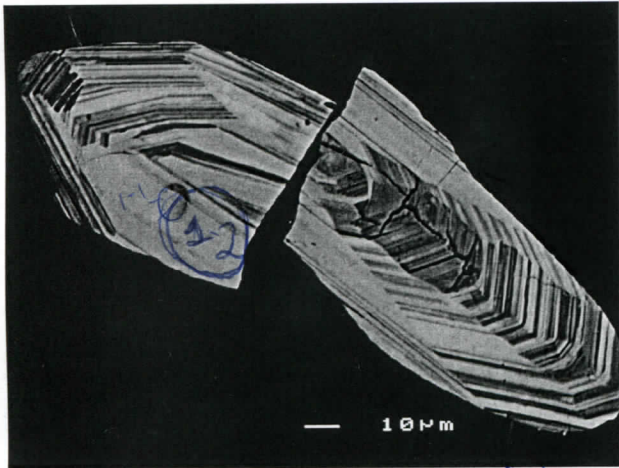


c11b14c.tif

c11b14b.tif

2632 ± 21 ma

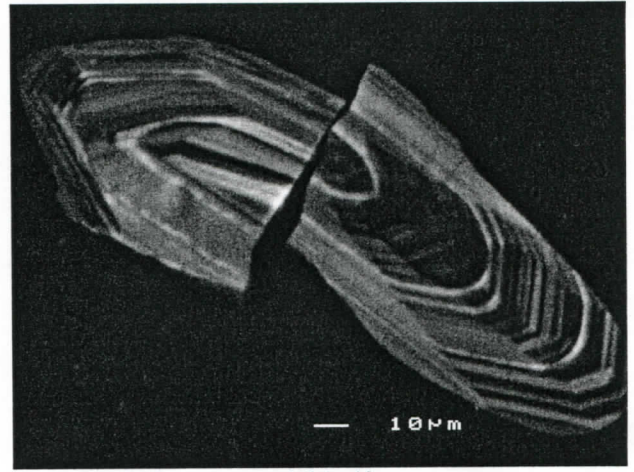
14-1 2611 ± 16
14-2 2636 ± 20



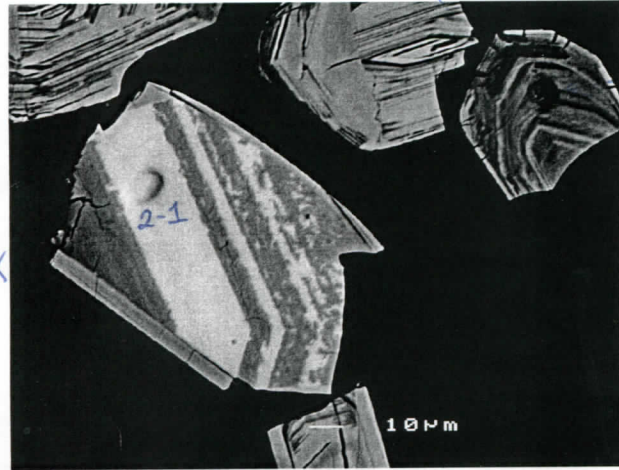
c11b1b.tif

1-1 2665 ± 12 ma -3%

1-2 (disc-2%) 2681 ± 14

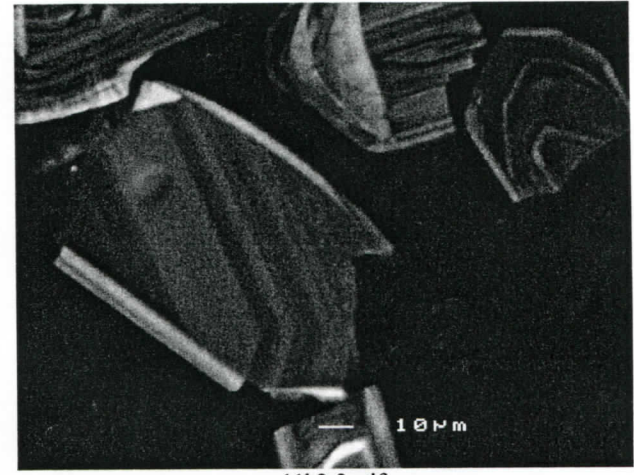


c11b1c.tif

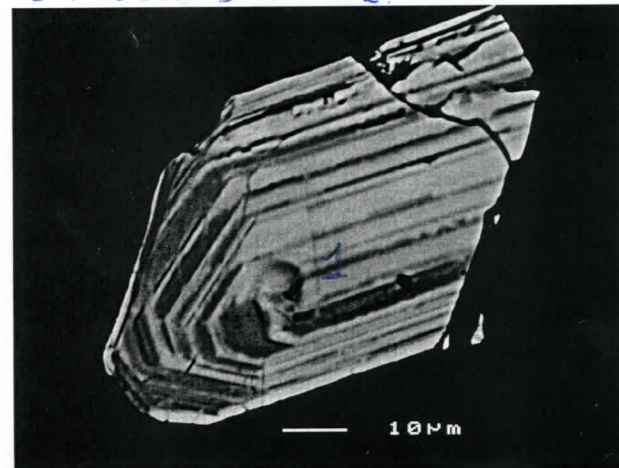


2-1 = 2710 ± 11 ma -1%
3-1 = 2556 ± 13 ma -59%

c11b2-3b.tif

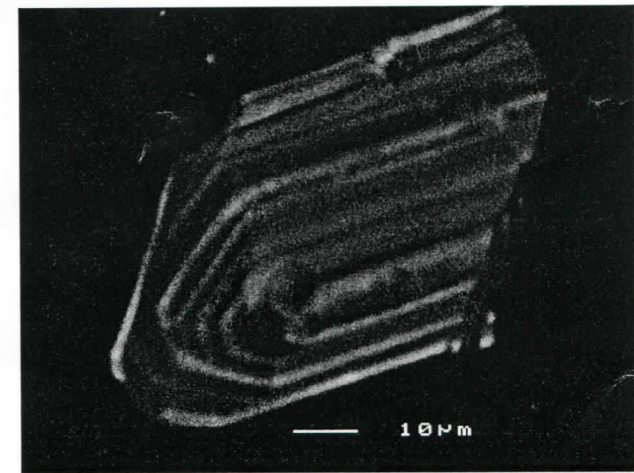


c11b2-3c.tif



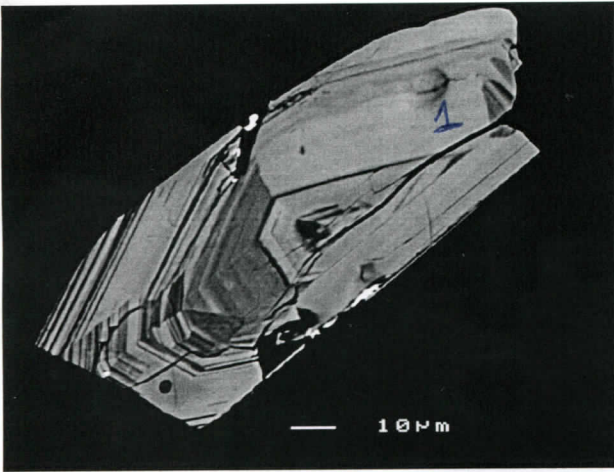
c11b4b.tif

not saved but 2613 ± 18 ma + v. disc.



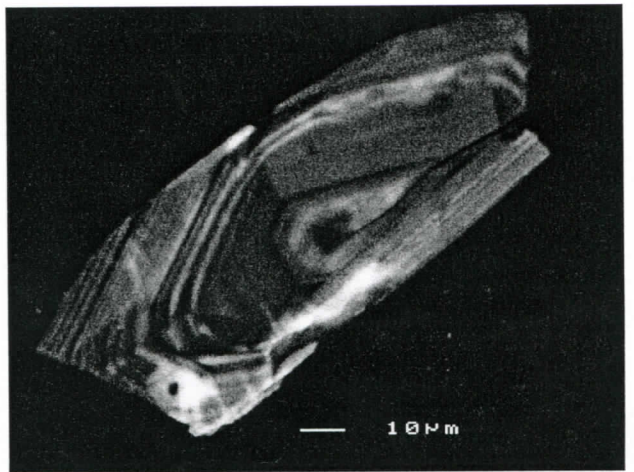
c11b4c.tif

Hen 11

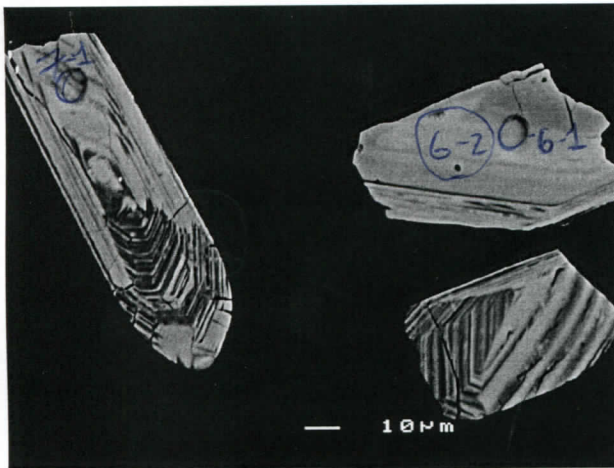


c11b5b.tif

~~2667 ± 12 Ma - 7%~~
2651 ± 19 Ma 3%

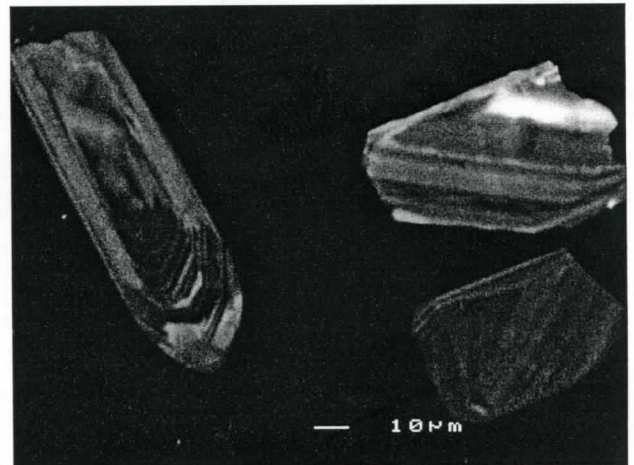


c11b5c.tif

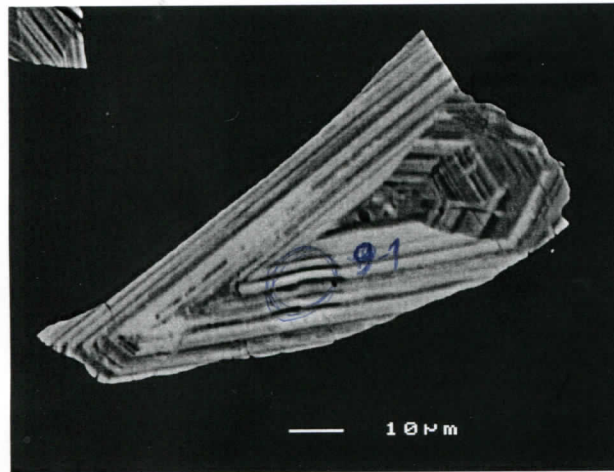


c11b6-7b.tif

6 ± 2674 ± 14 Ma - 1%
7 = 2701 ± 14 Ma - 21%
6-2 2665 ± 14 Ma 2

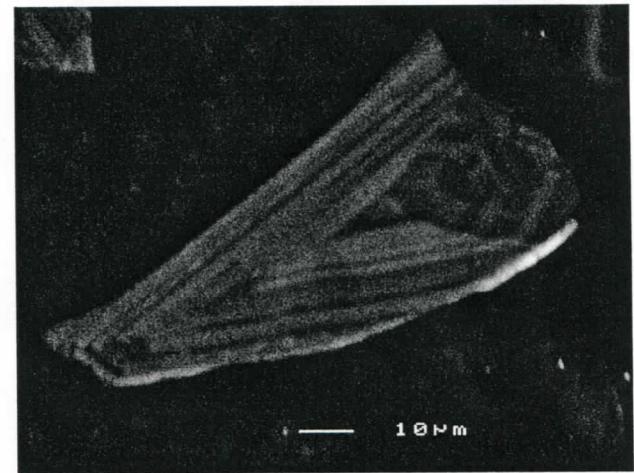


c11b6-7c.tif

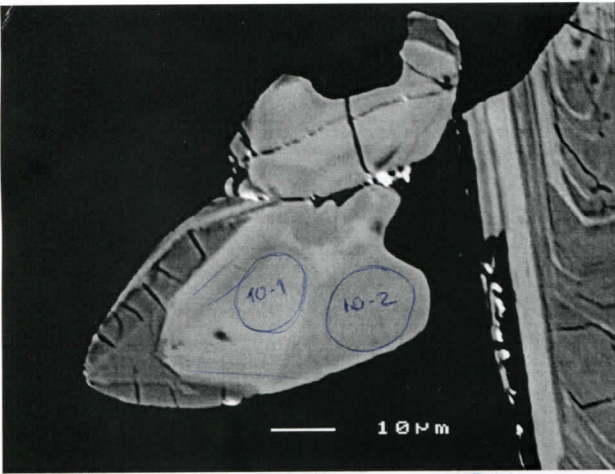


c11b9b.tif

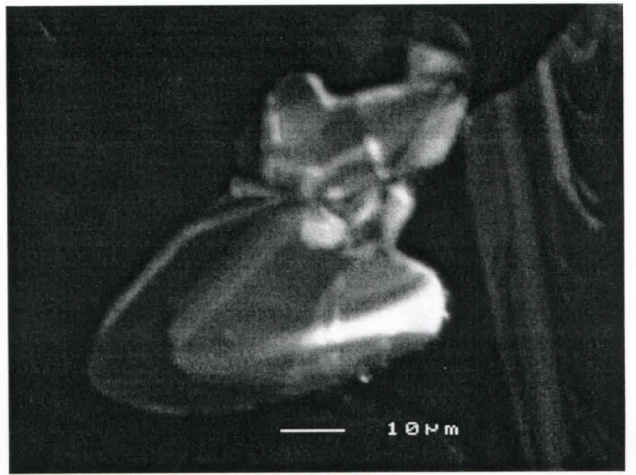
2663 ± 22 Ma - 32%



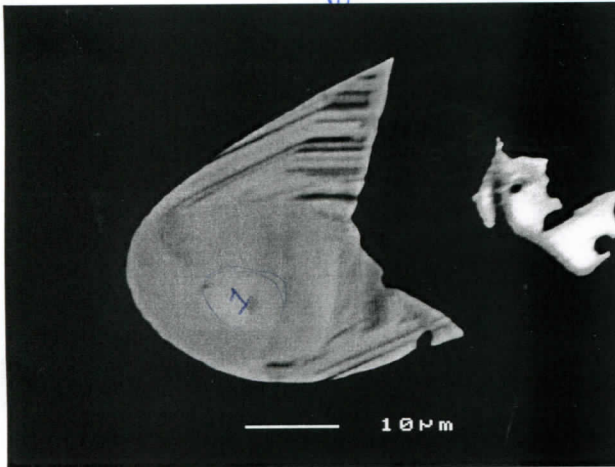
c11b9c.tif



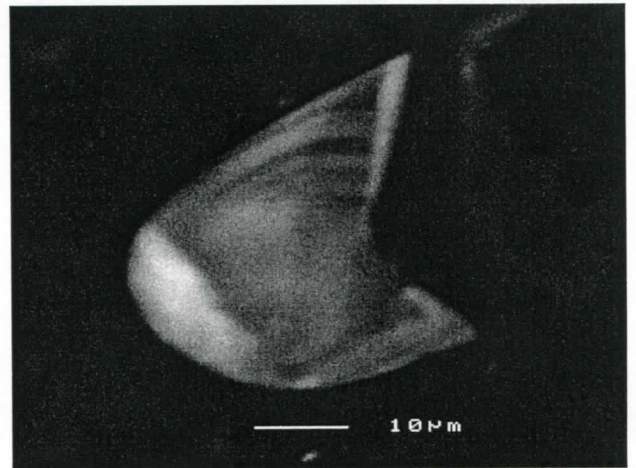
c11b10b.tif 2652 ± 12 Ma - 0%
 10-1 2678 ± 14 Ma - 4%
 10-2



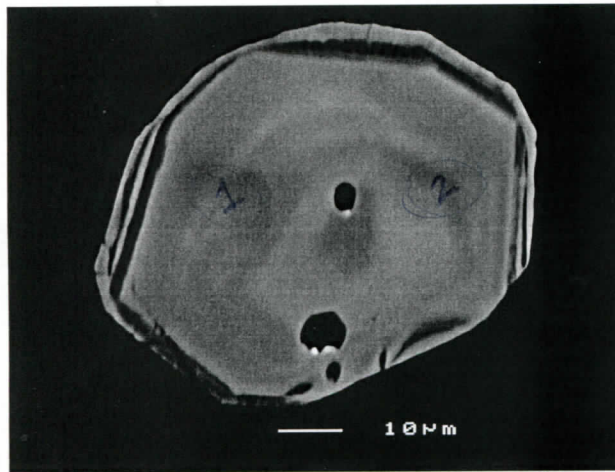
c11b10c.tif



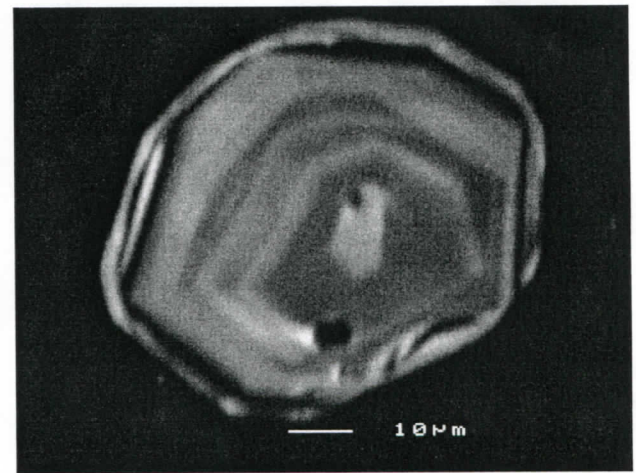
c11b11b.tif $2627 \pm 19 \pm 11\%$



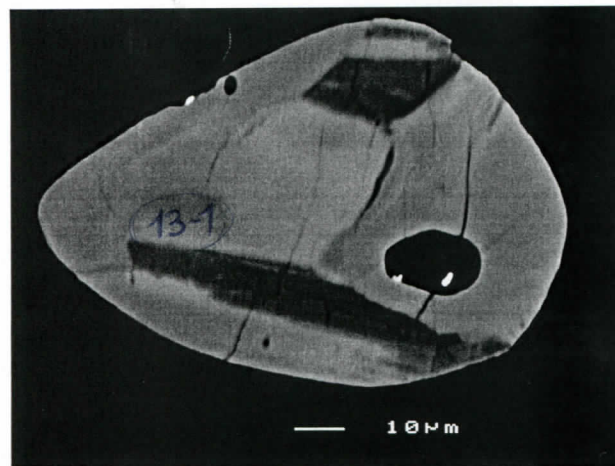
c11b11c.tif



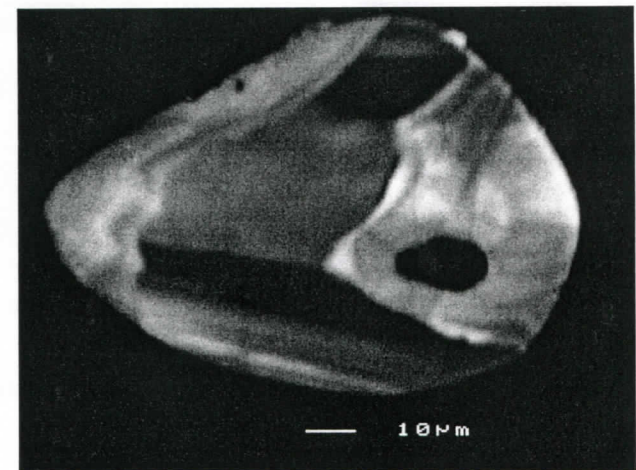
c11b12b.tif 1- 2767 ± 16 Ma - 3%
 2- 2805 ± 16 Ma - 1%



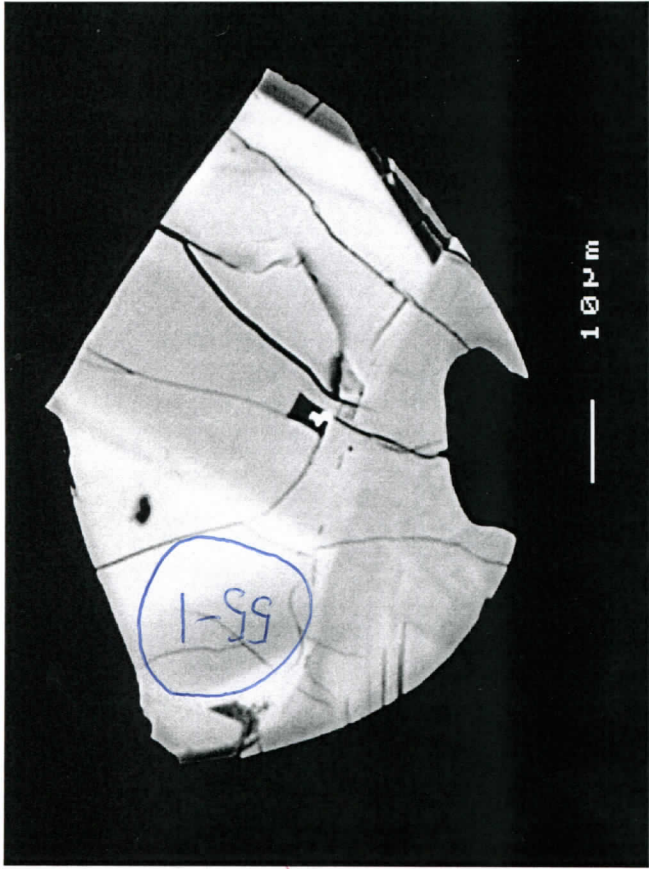
c11b12c.tif



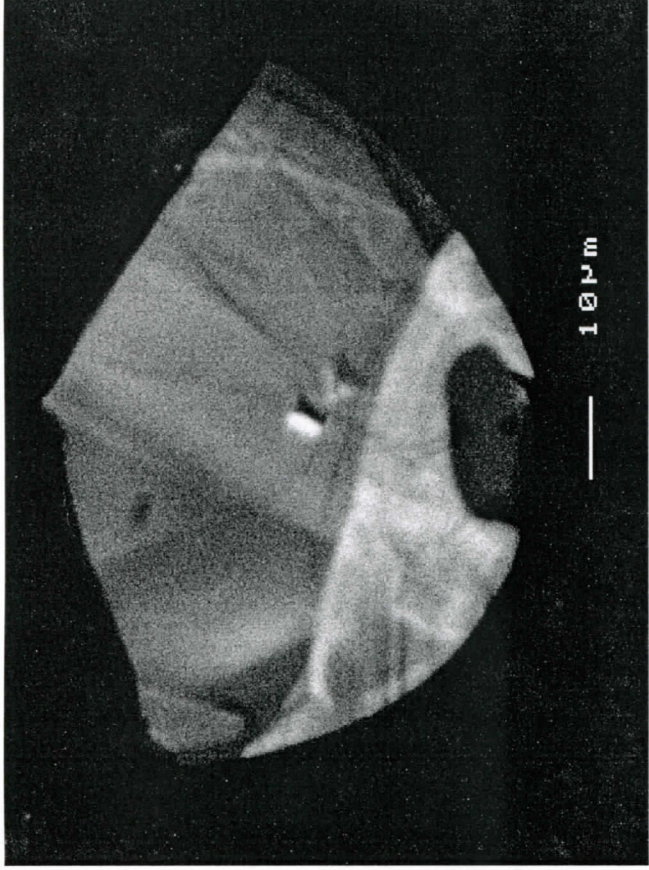
c11b13b.tif 2684 ± 15 Ma - 6%



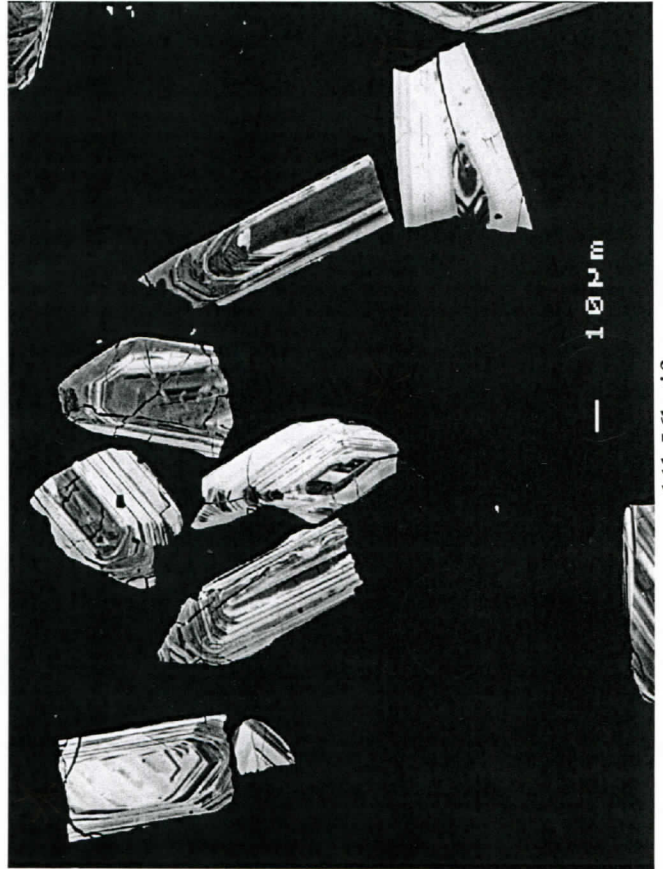
c11b13c.tif



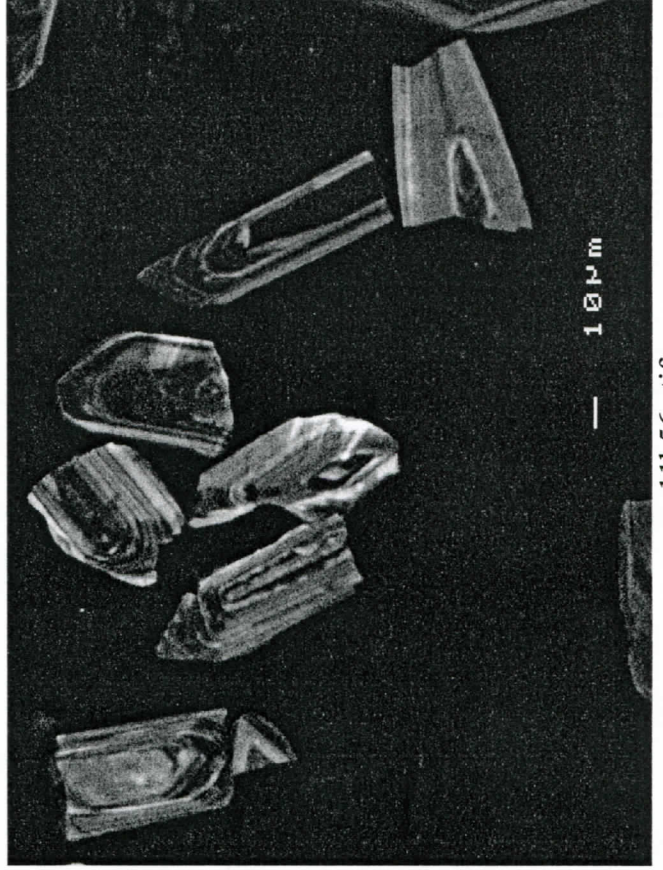
c11b55b.tif



c11b55c.tif

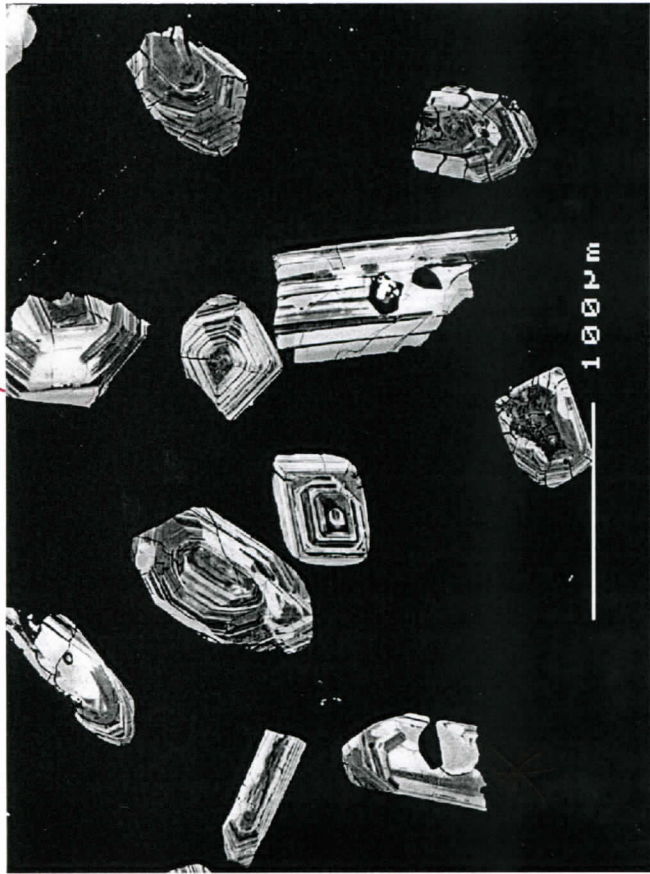


c11b56b.tif

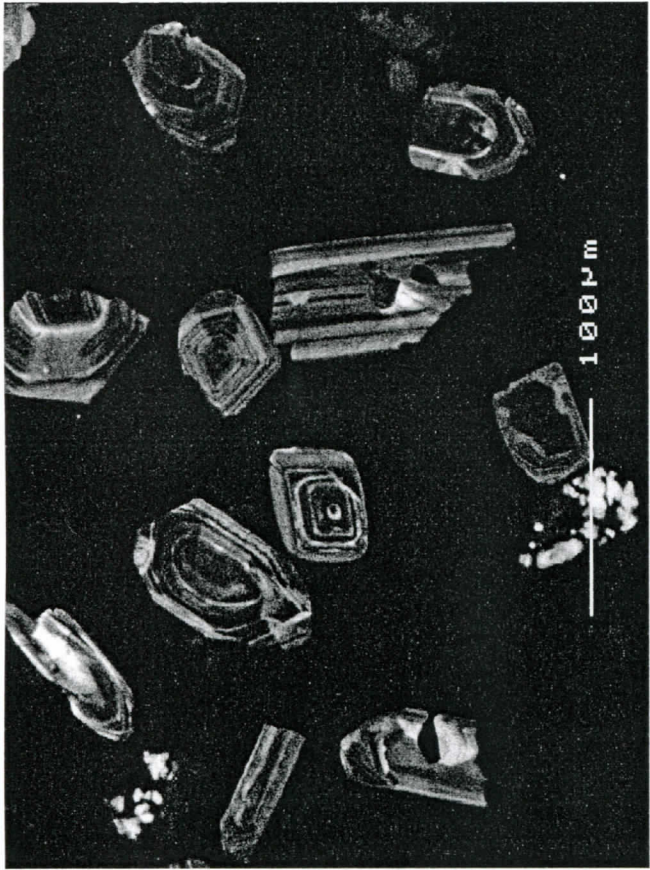


c11b56c.tif

*12?
C11 population B: GMFPo3



c11b57b.tif



c11b57c.tif