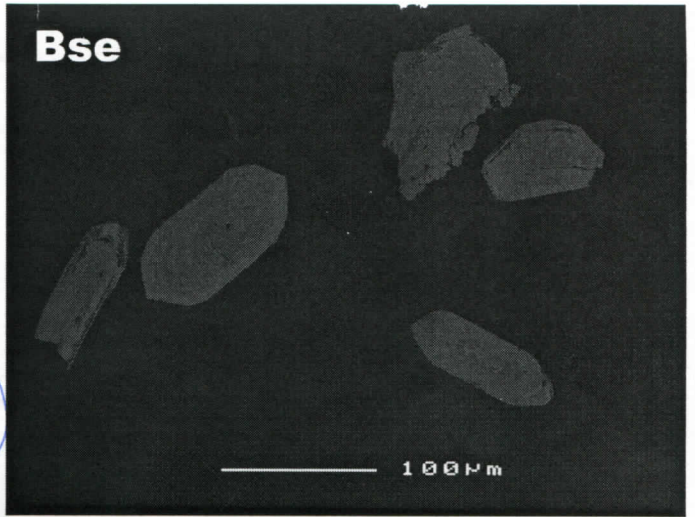


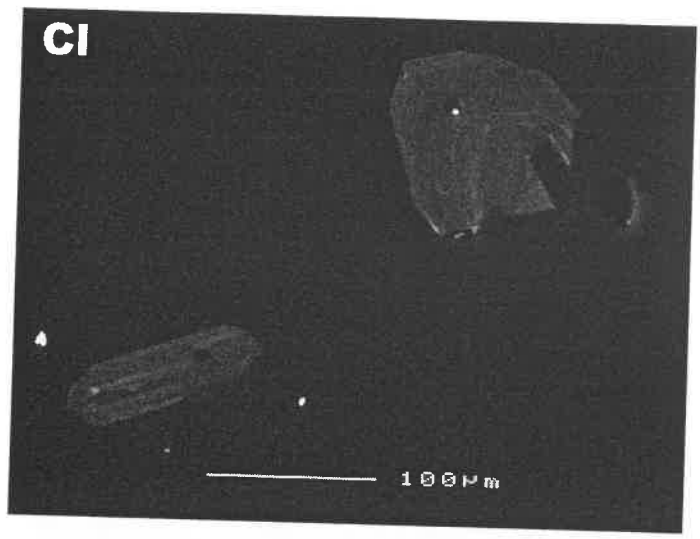
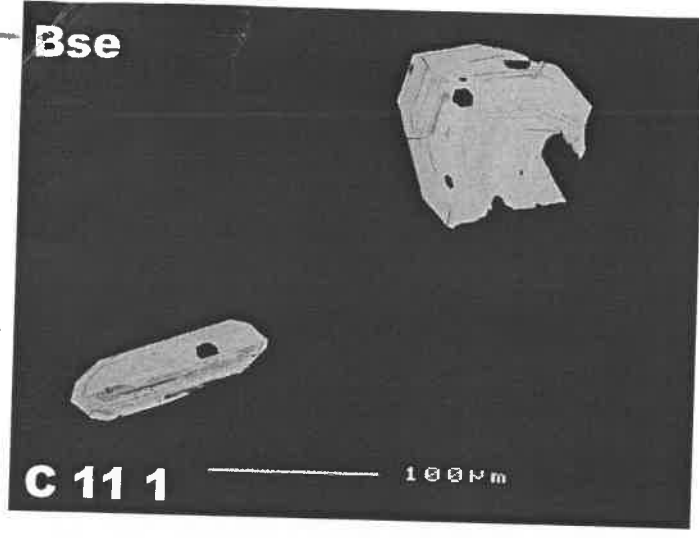
Bse



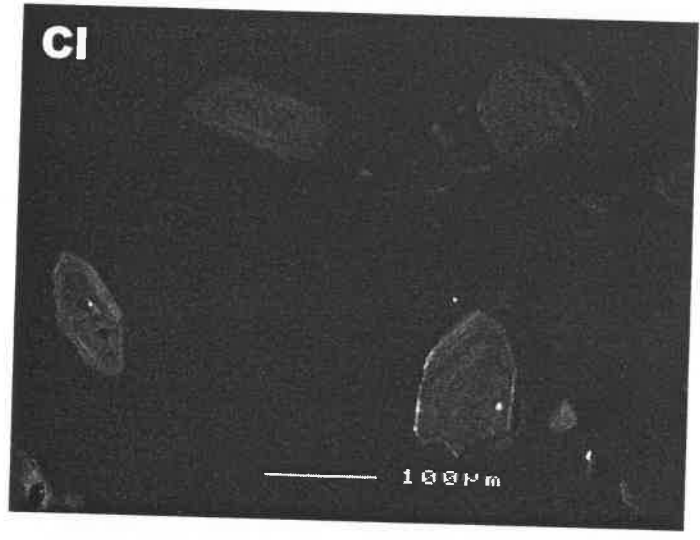
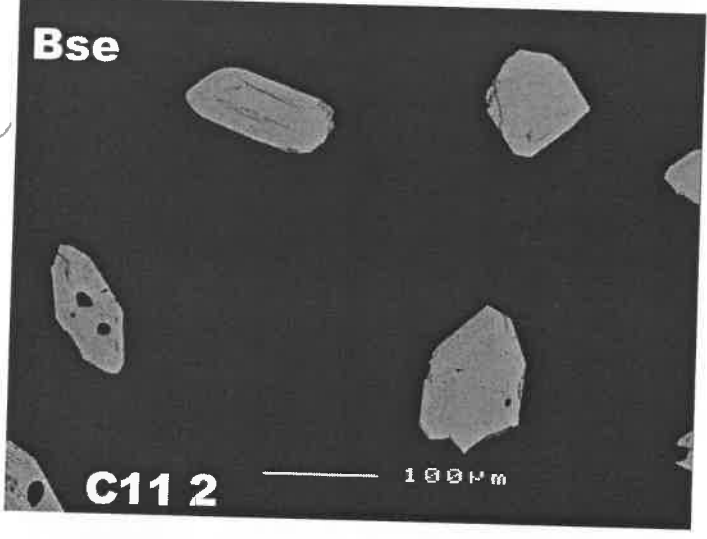
Pop C
p. 14.

0117

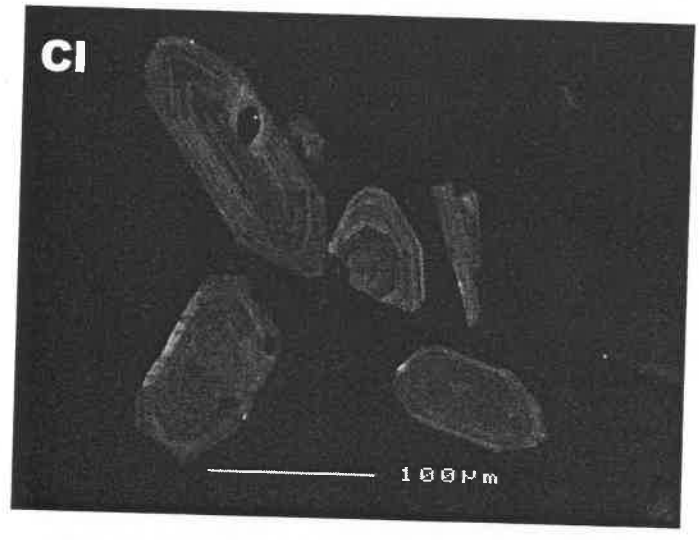
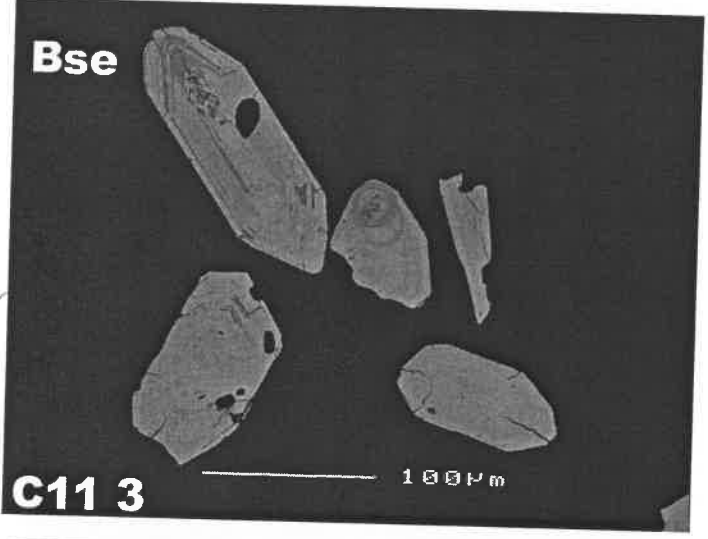
BPC
photo 1



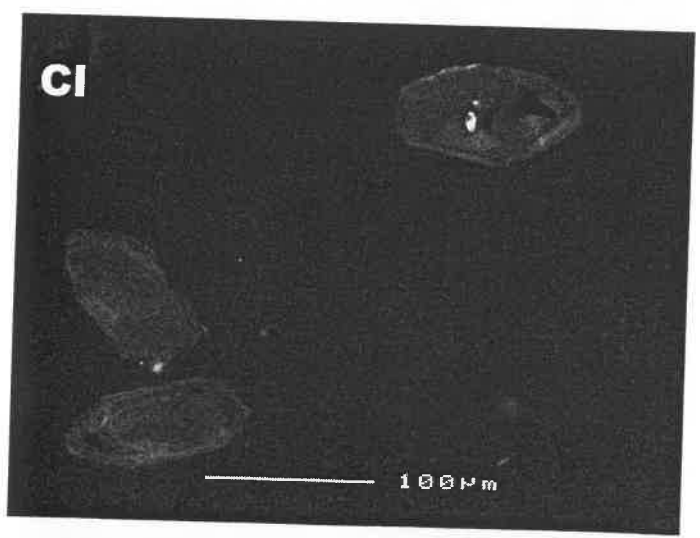
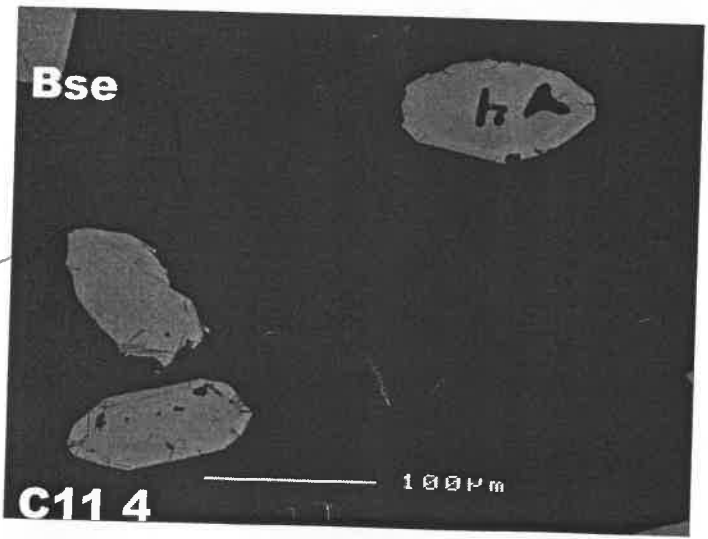
BPC
photo 1



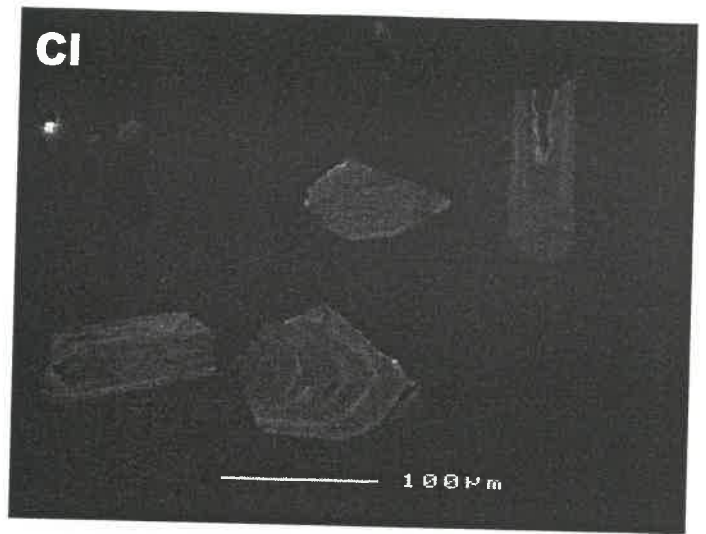
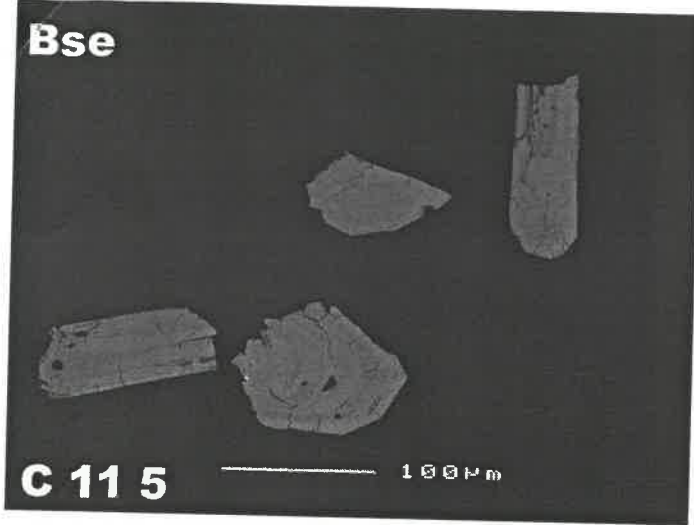
BPC
photo 1



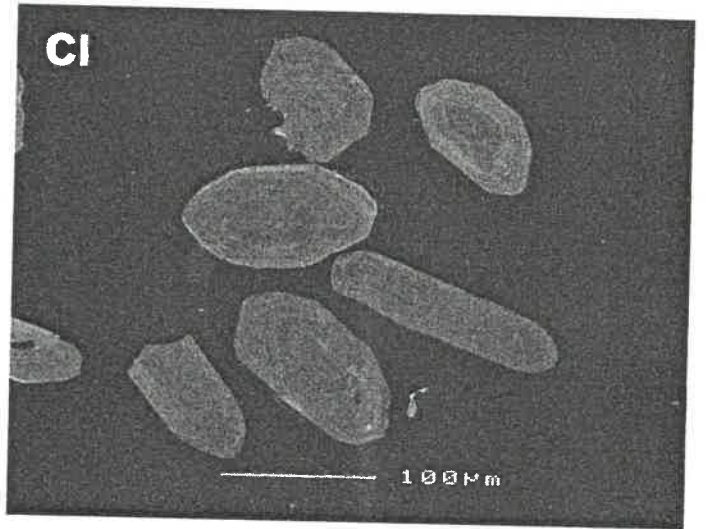
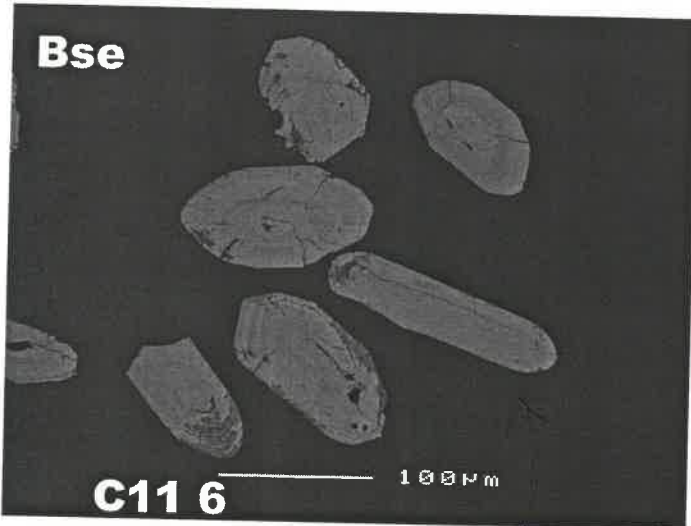
BPC
photo 2



pl 2
PopC

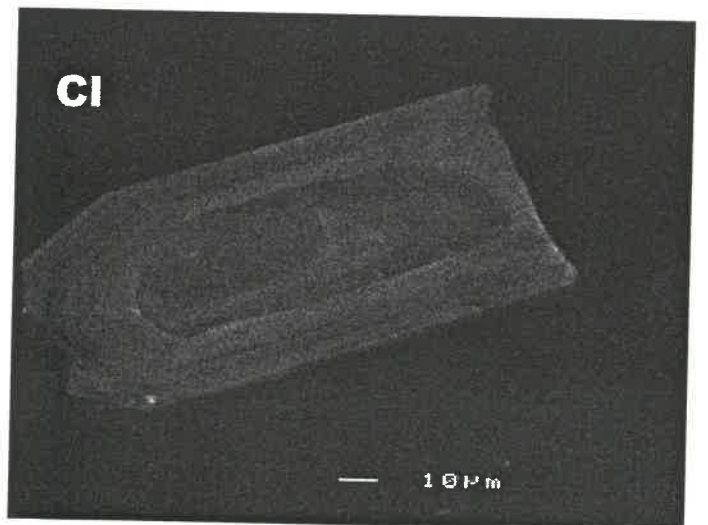
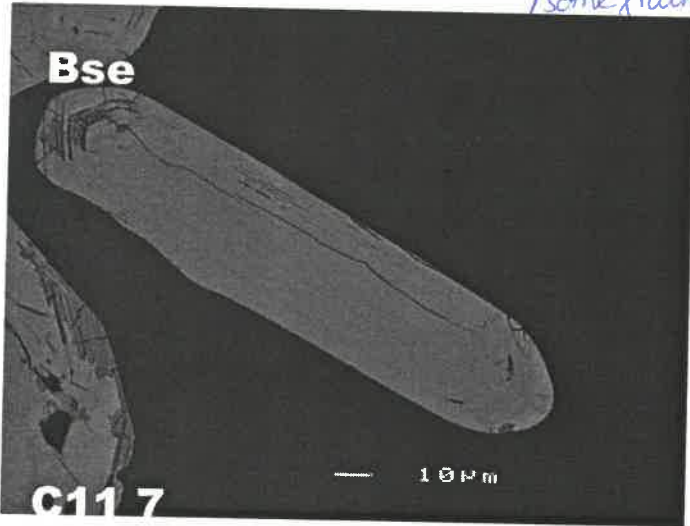


pl 4
PopC

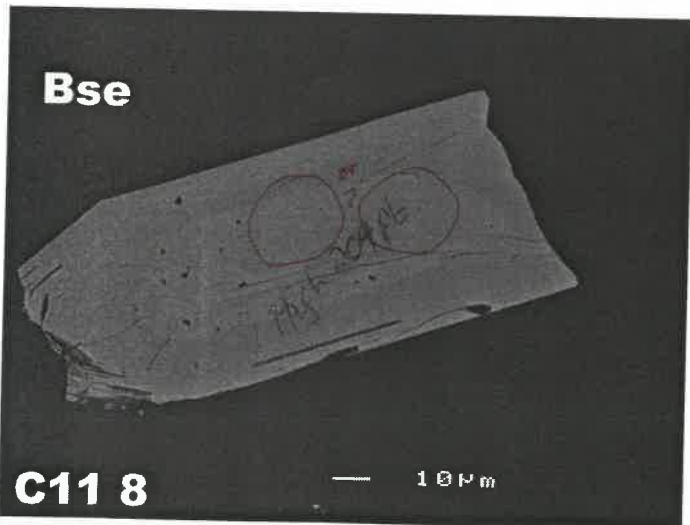


/some prawn

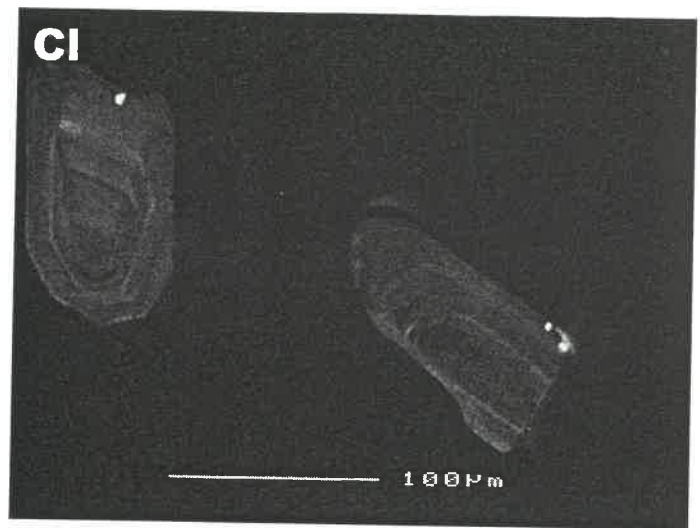
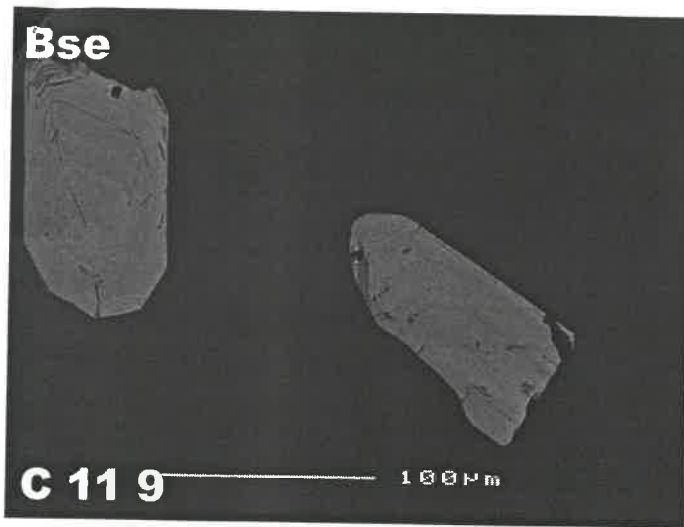
pl 4
PopC



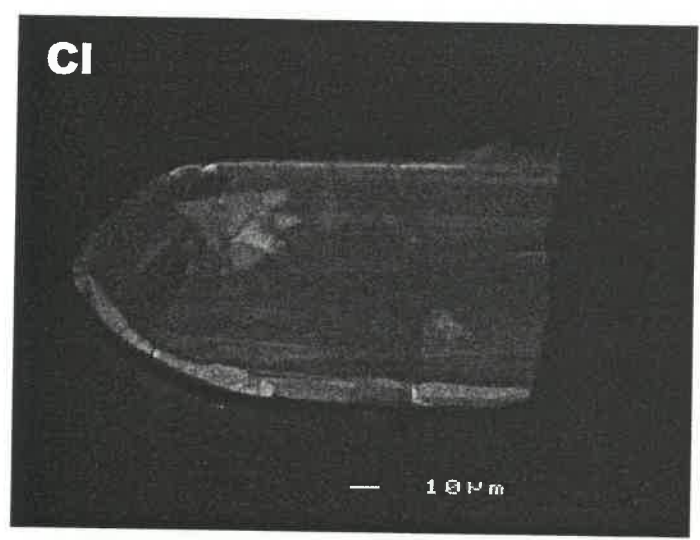
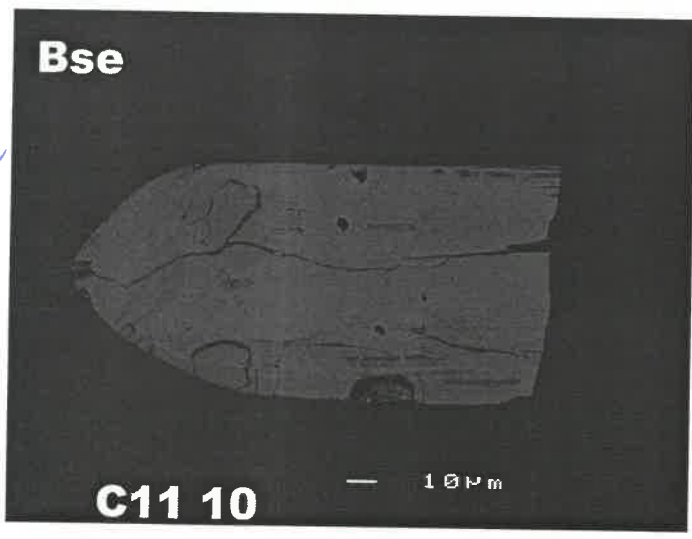
pl 4
PopC
grain 26



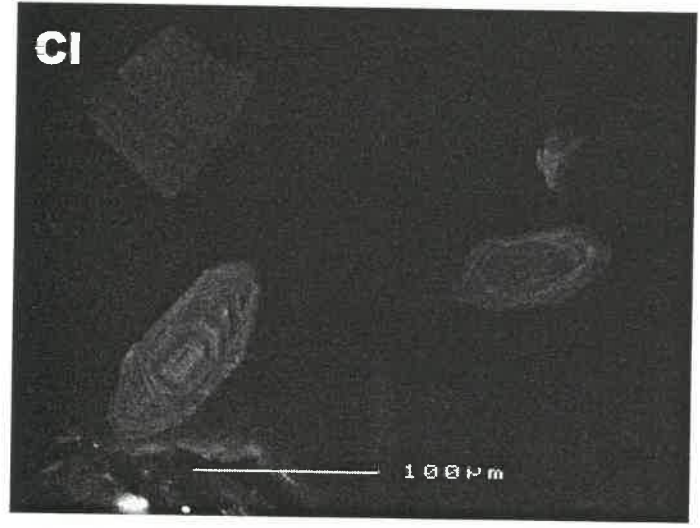
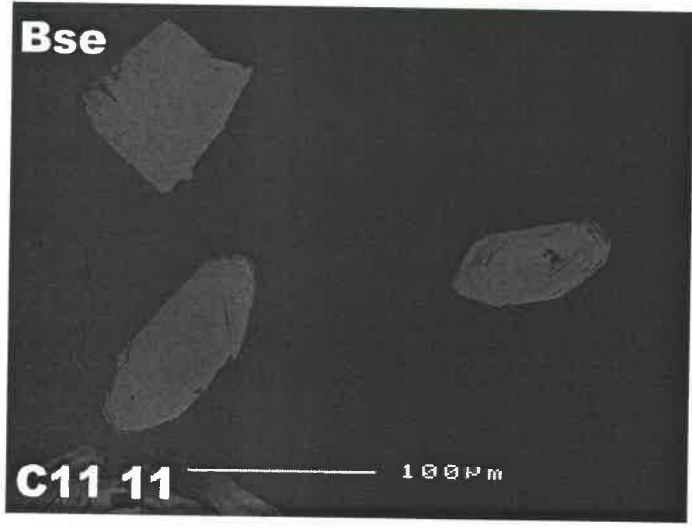
pl 5 PopC



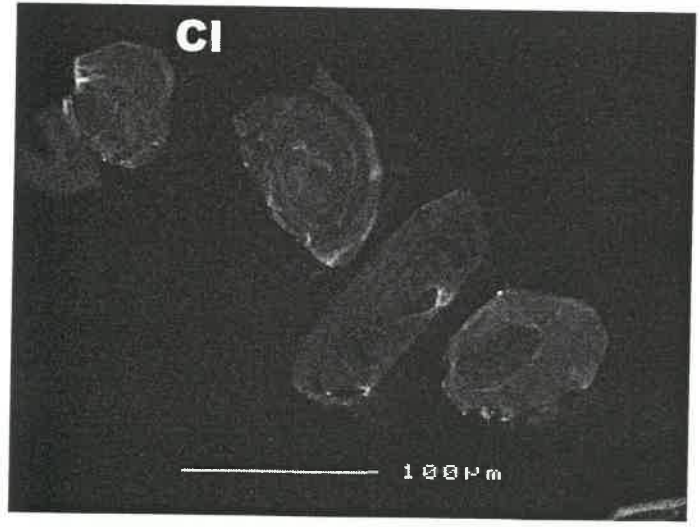
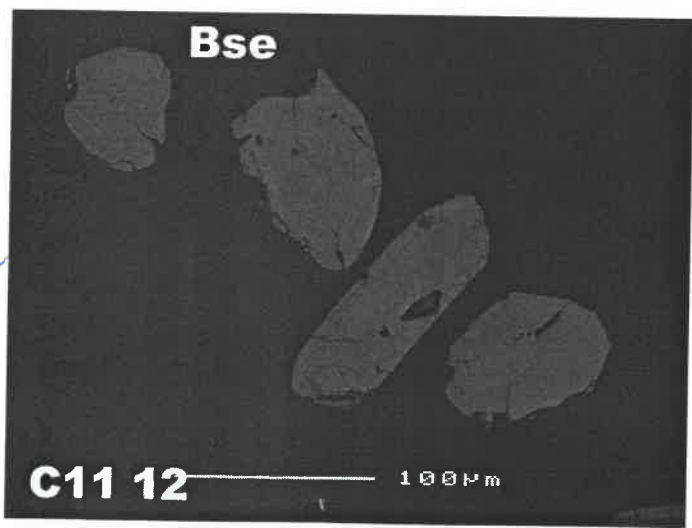
pl 6 PopC



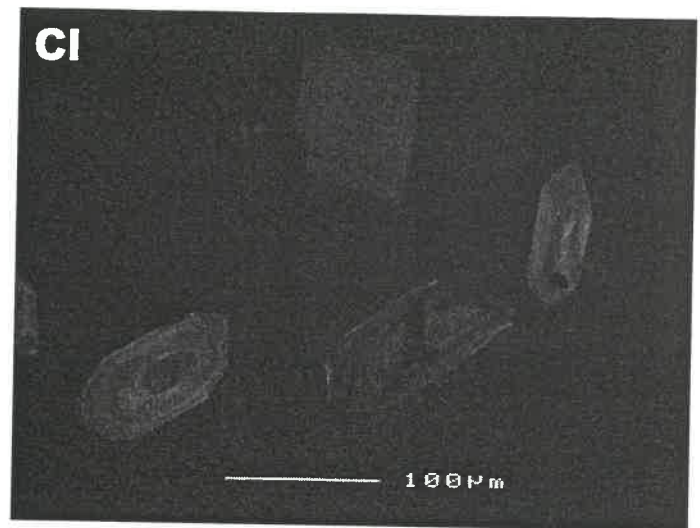
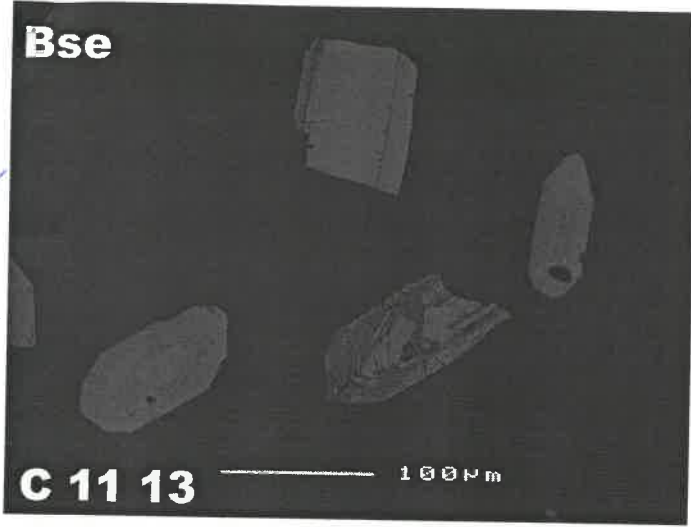
pl 7 PopC



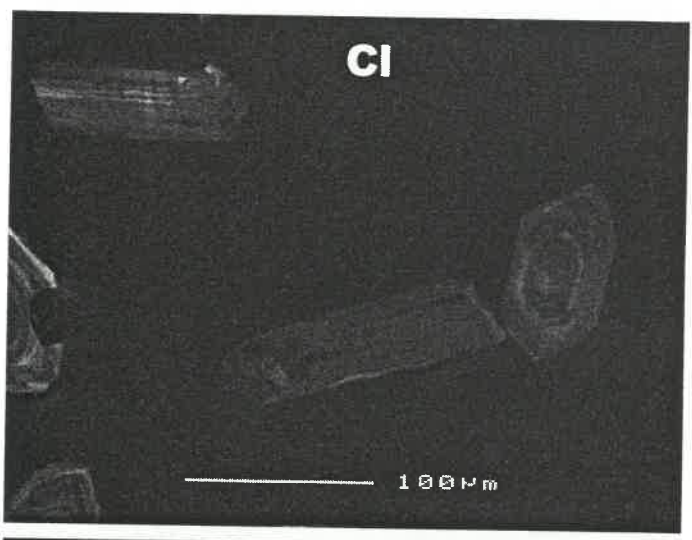
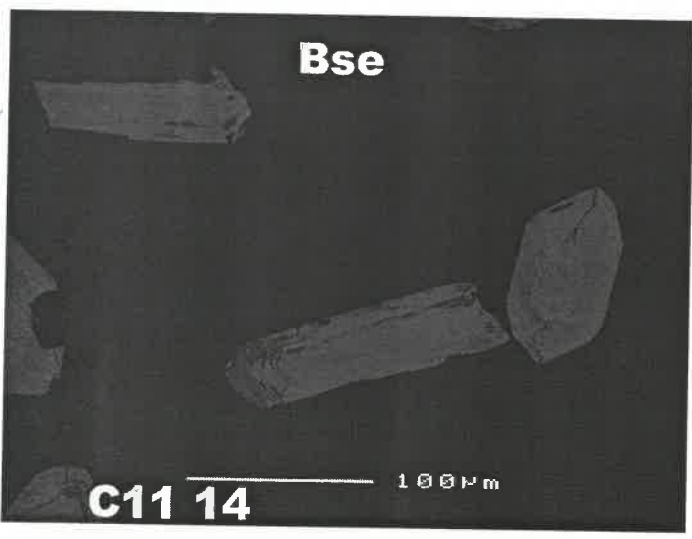
pl 7 PopC



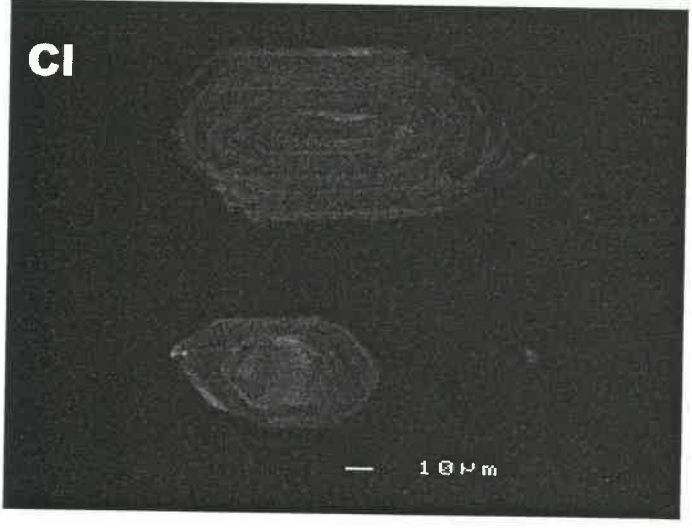
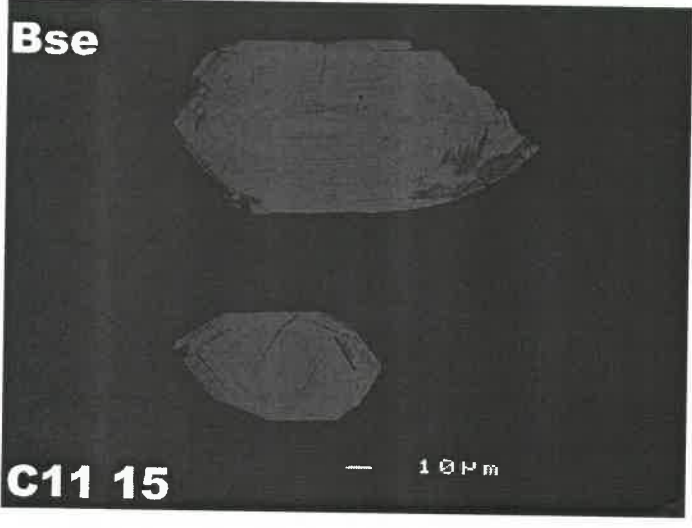
Pop C
12/8/9



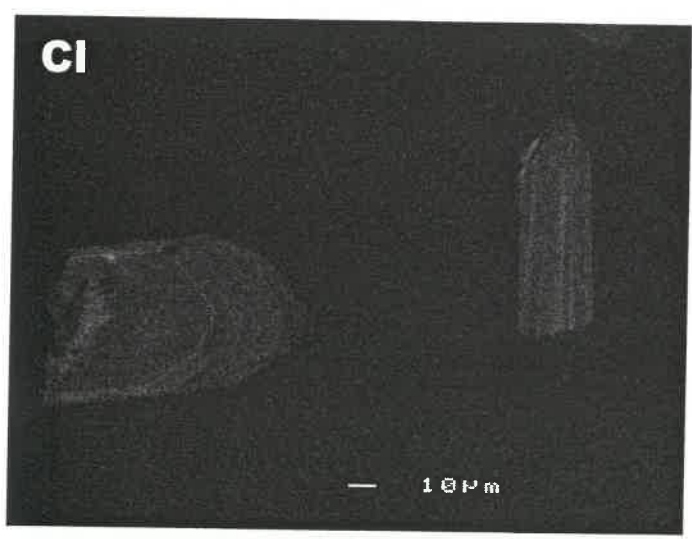
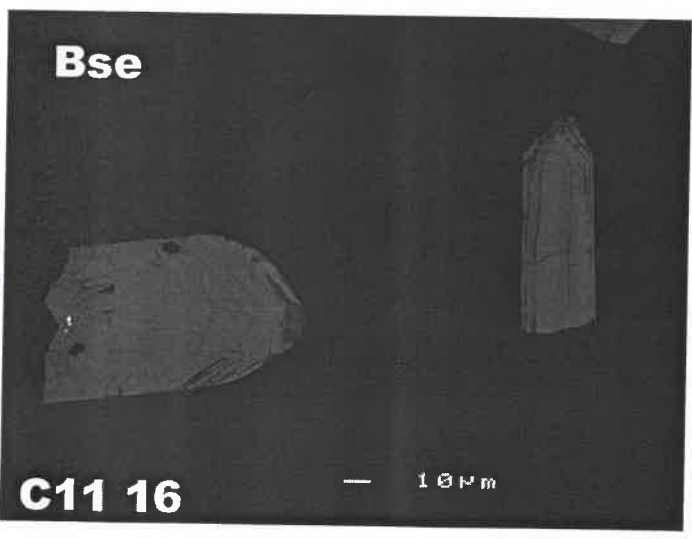
Pop C
12/12



Pop C
12/12

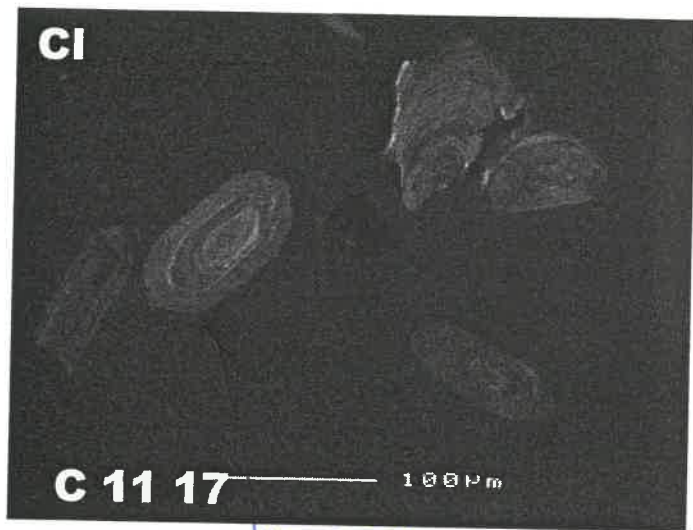


Pop C
12/12/13

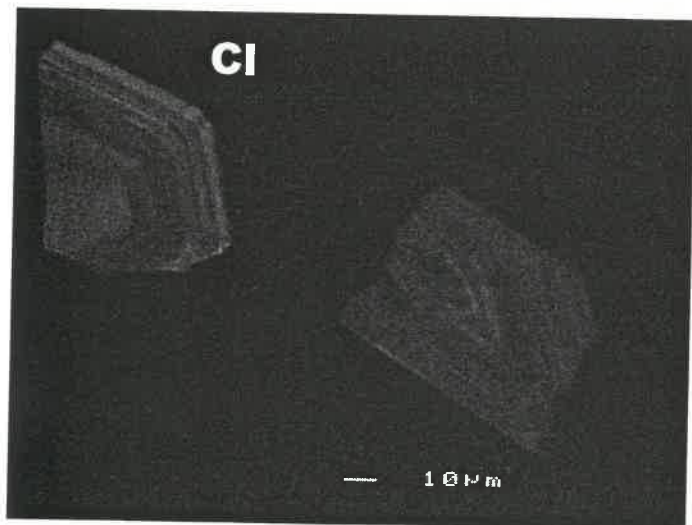
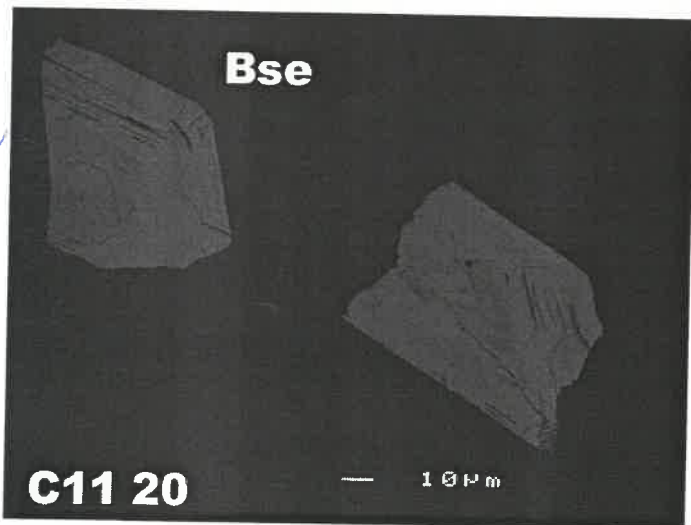
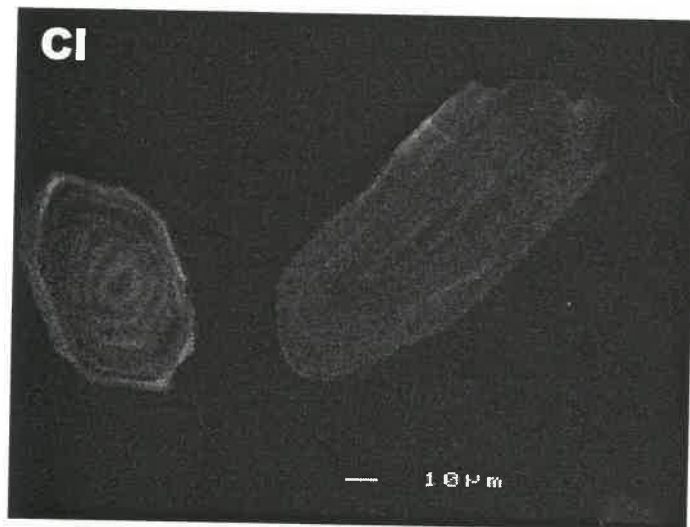
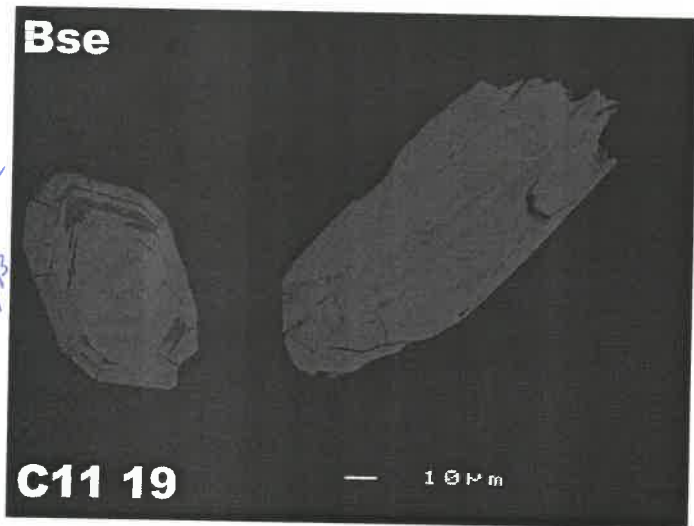
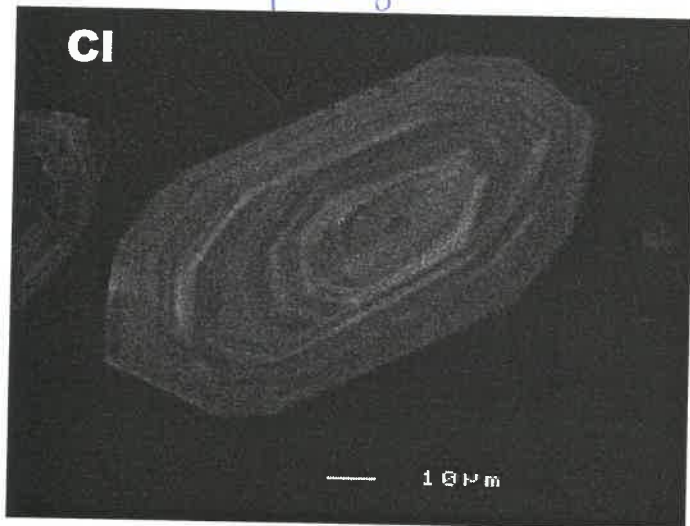
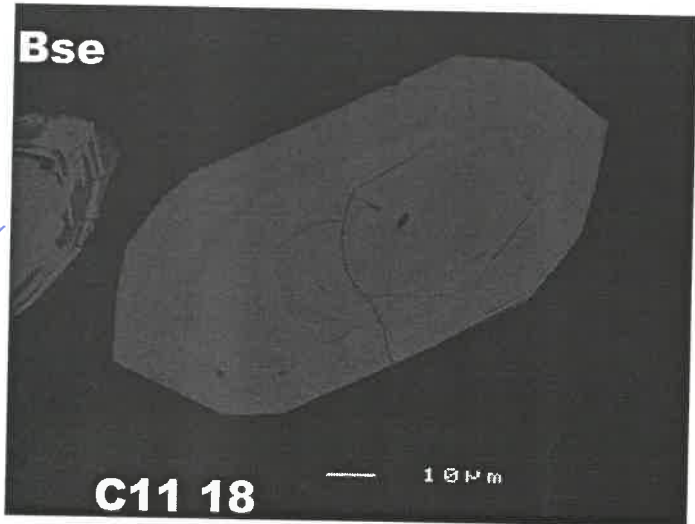


see last page
for BSE image

popC
ph 14



same grain

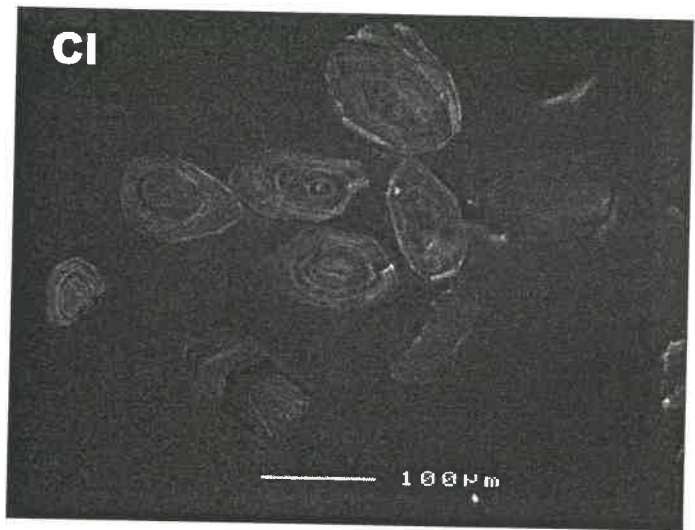
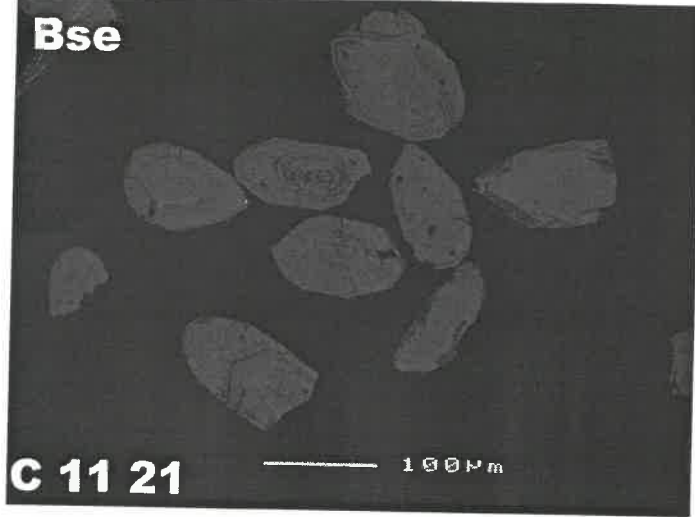


popC
ph 14

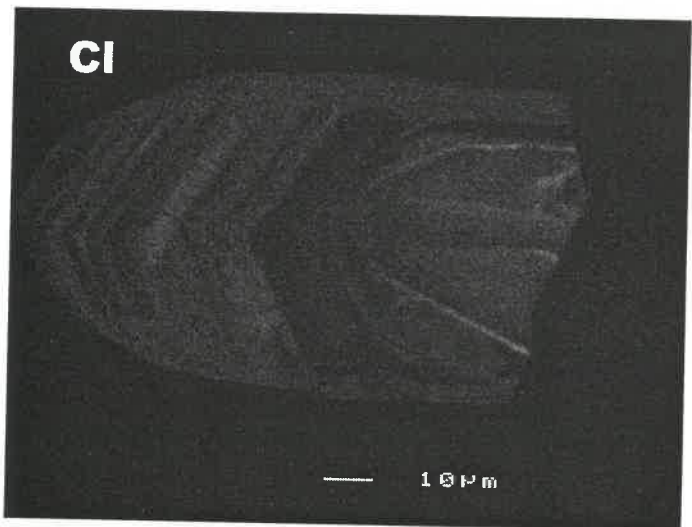
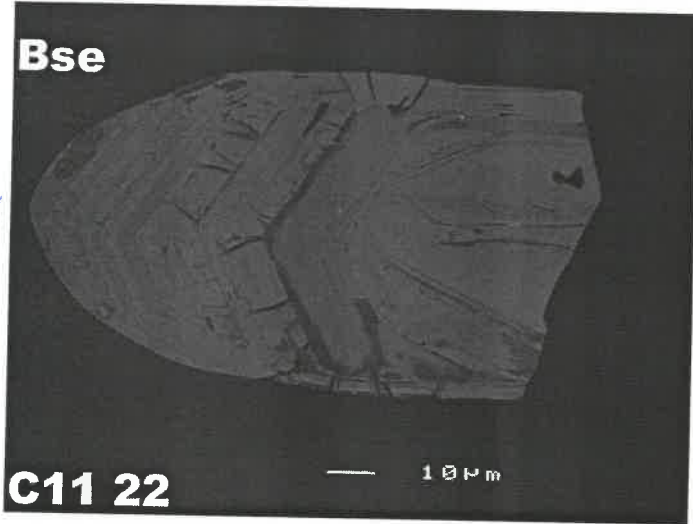
popC
ph 14/15

popC
15

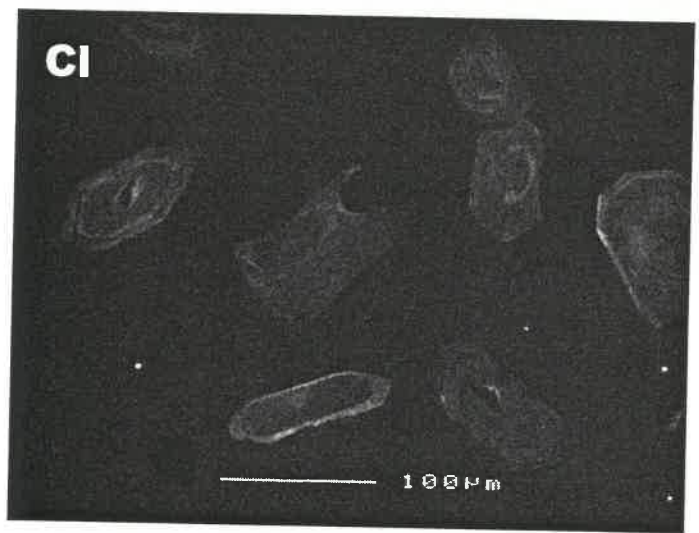
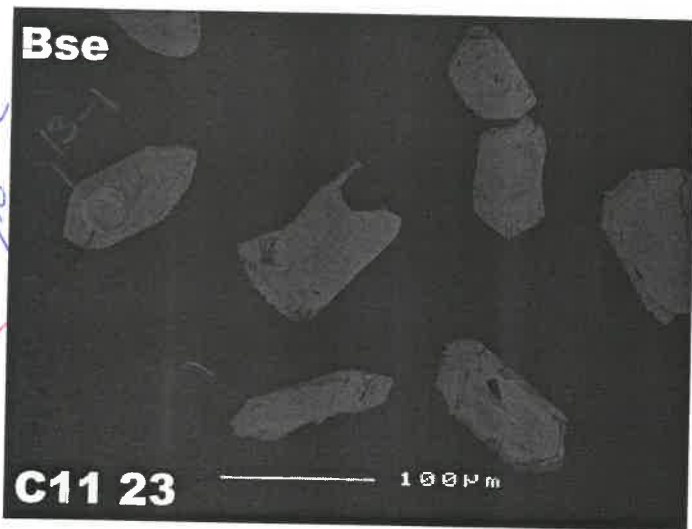
P2/16 Pop C



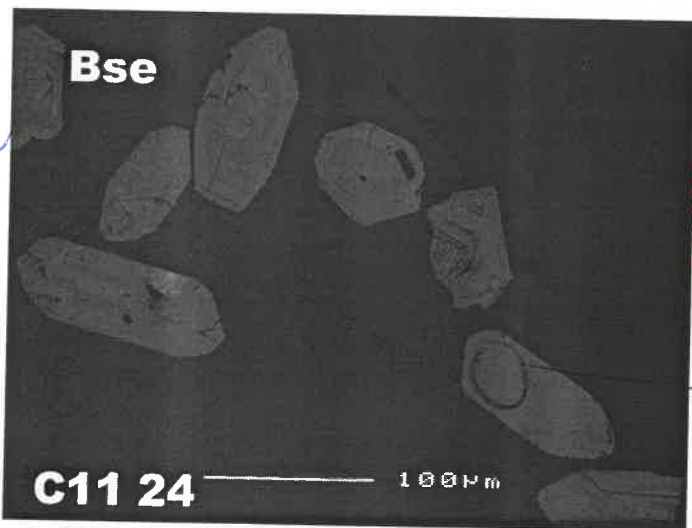
P2/16 Pop C



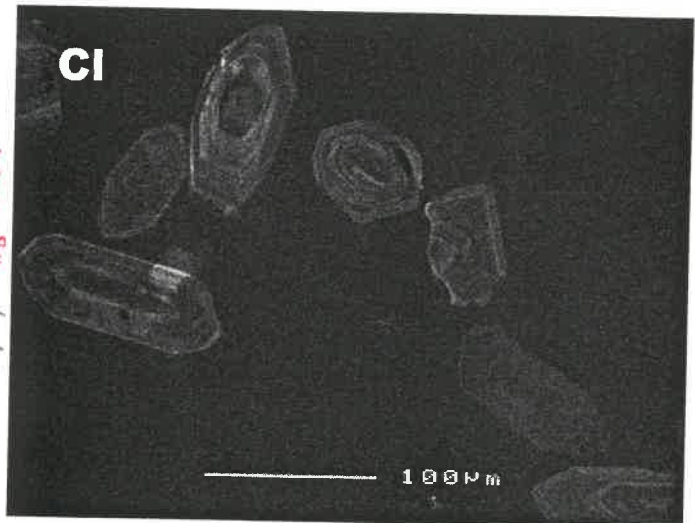
P2/17/10 Pop C



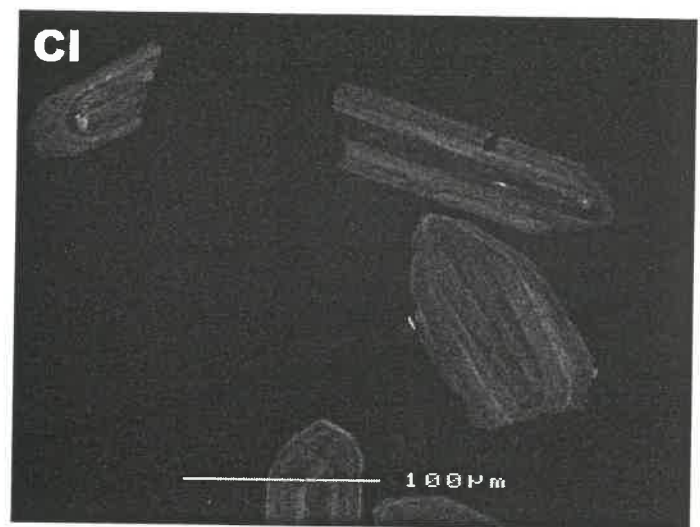
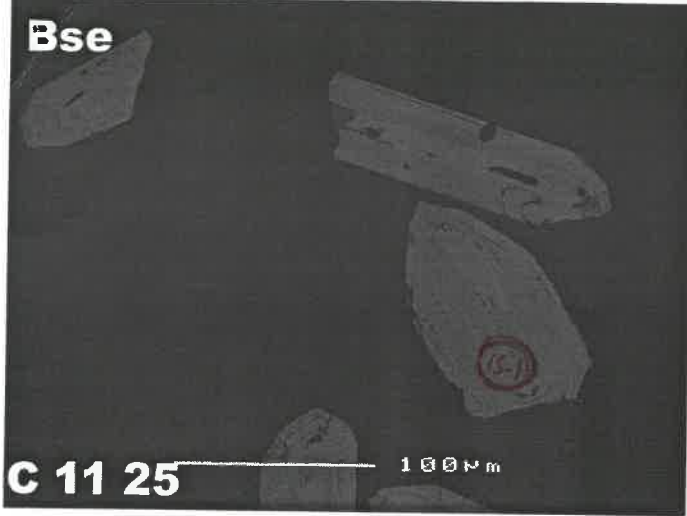
P2/18 Pop C



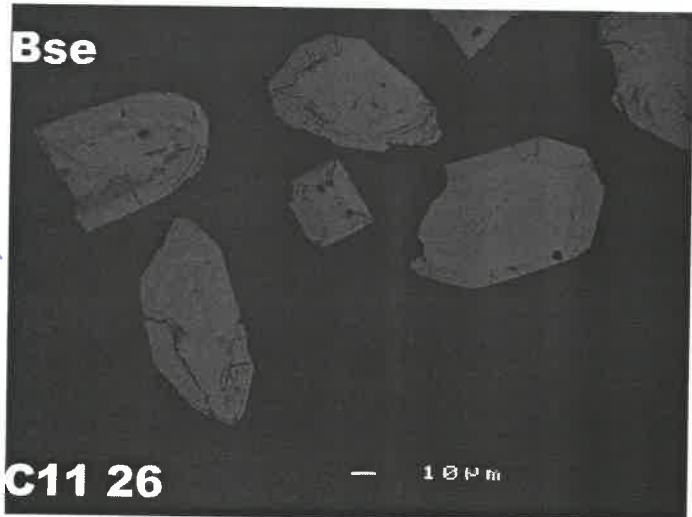
P2/18 Pop C



Pop C
19/18

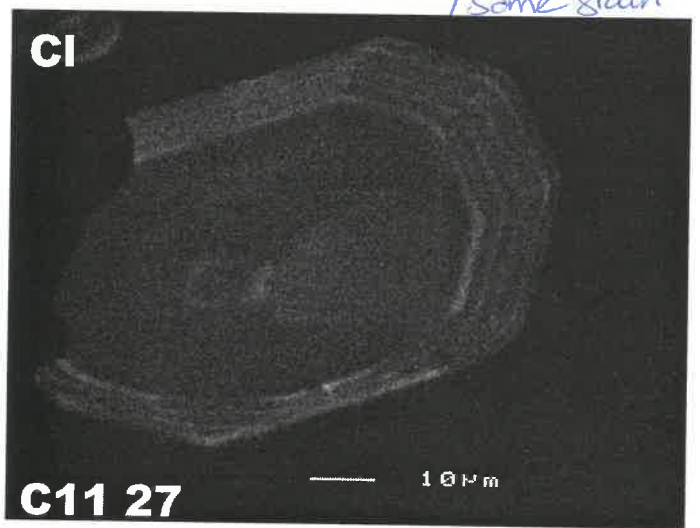


Pop C
19/18

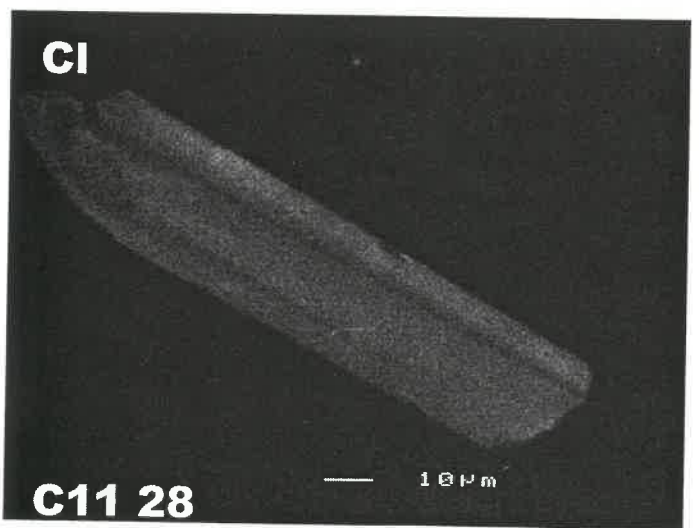


/some grain

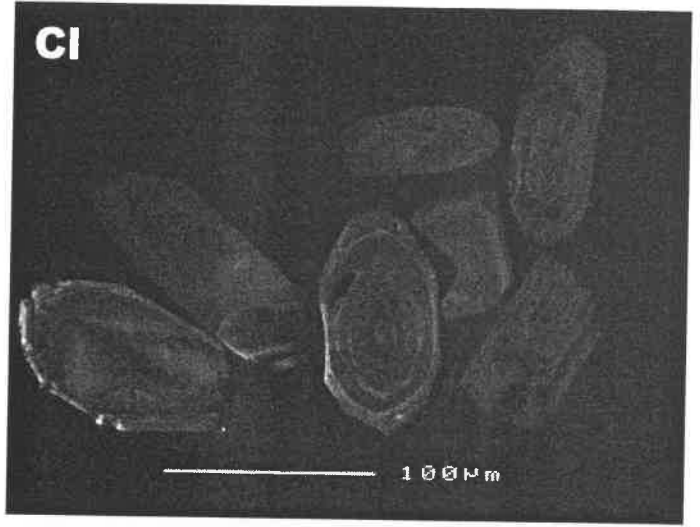
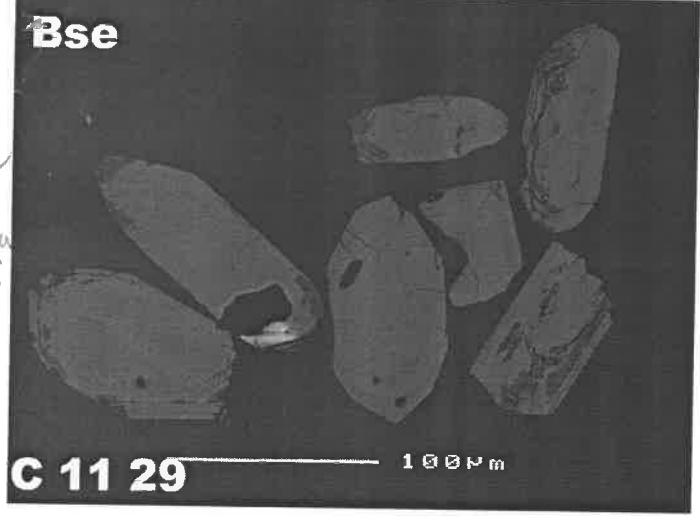
Pop C
photo 19/18



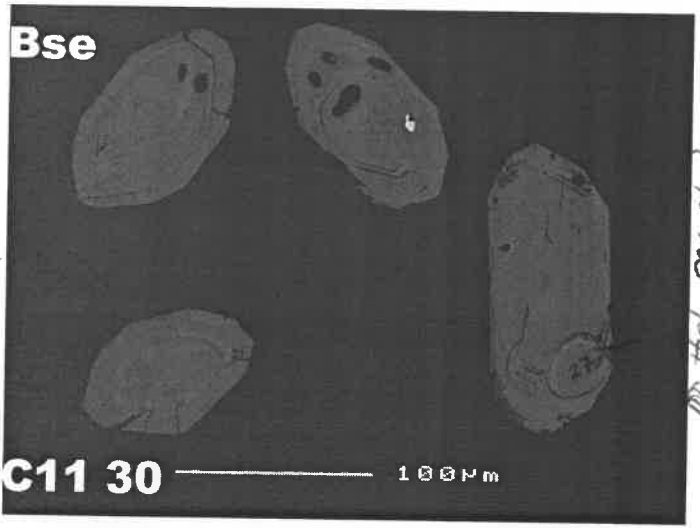
Pop C
photo 19



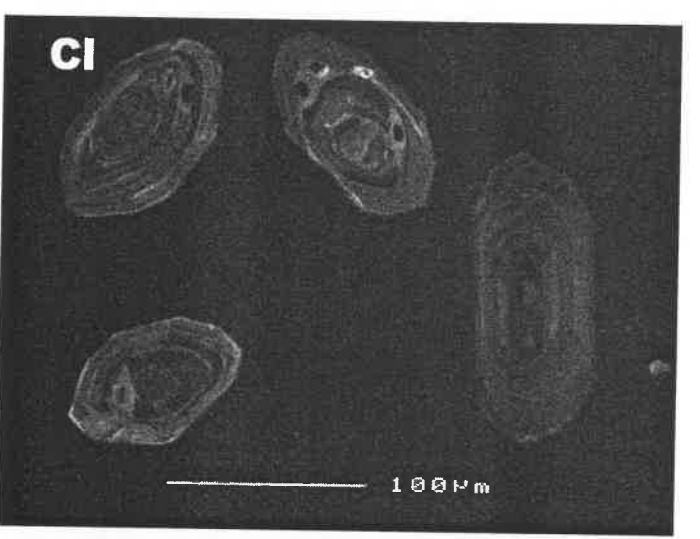
Pop C
A. 20/19



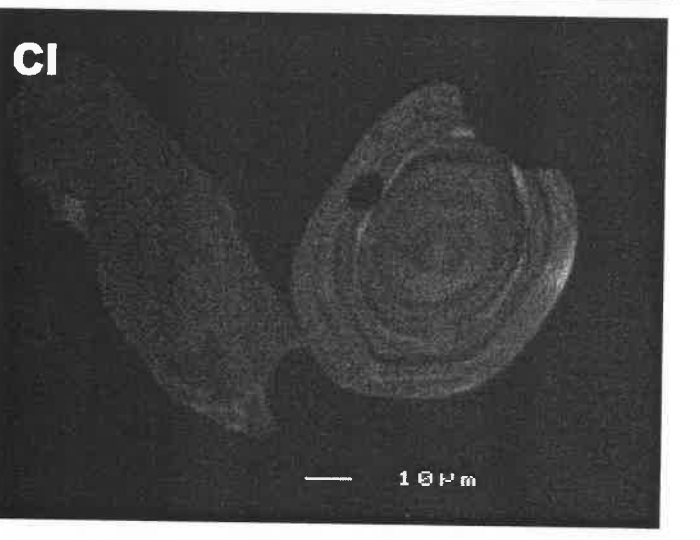
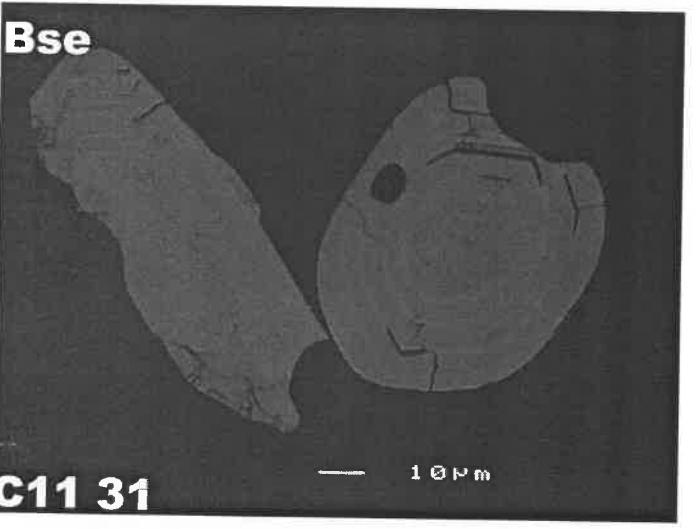
Pop C
A. 5/22



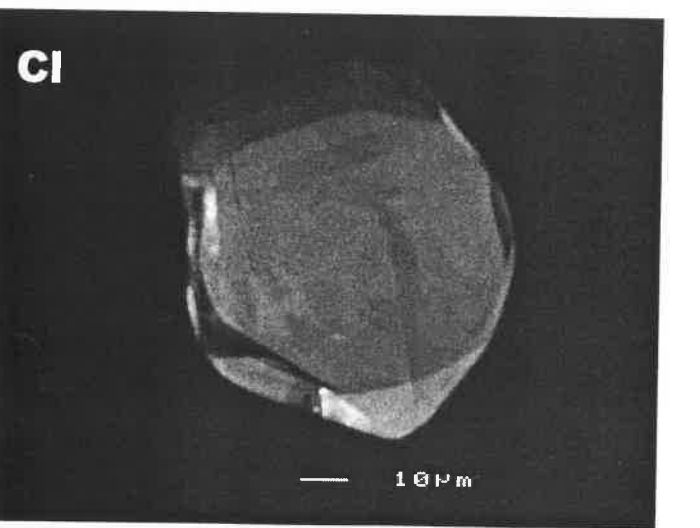
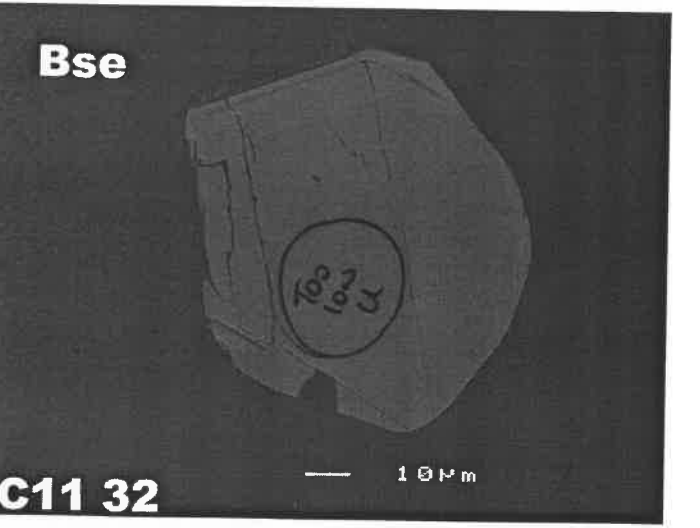
100 µm 20446



Pop C
A. 26



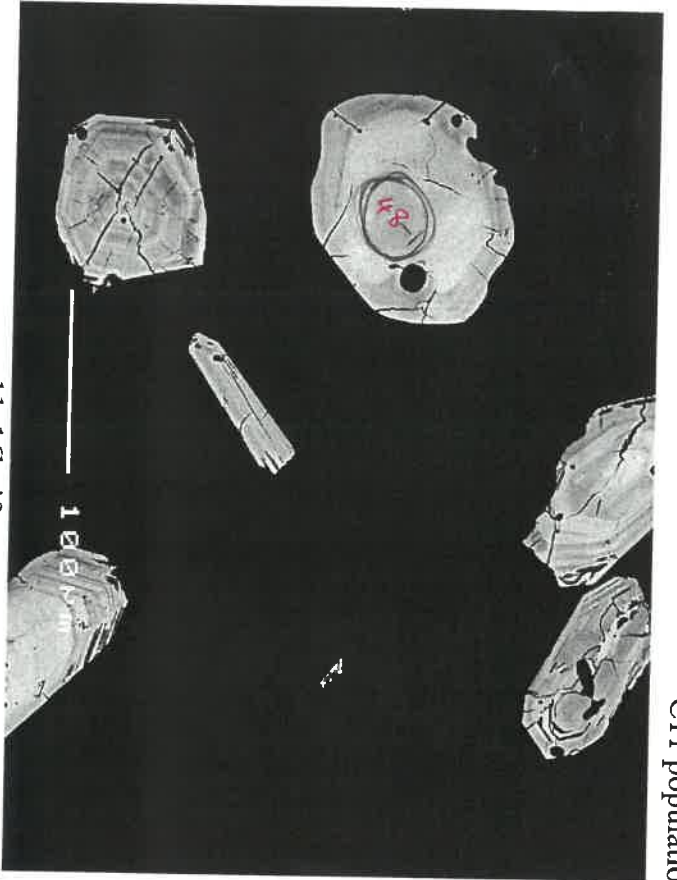
Pop D
h29



C11 population C: ENGDS/133.6-137.5 AHP0

Handwritten signature

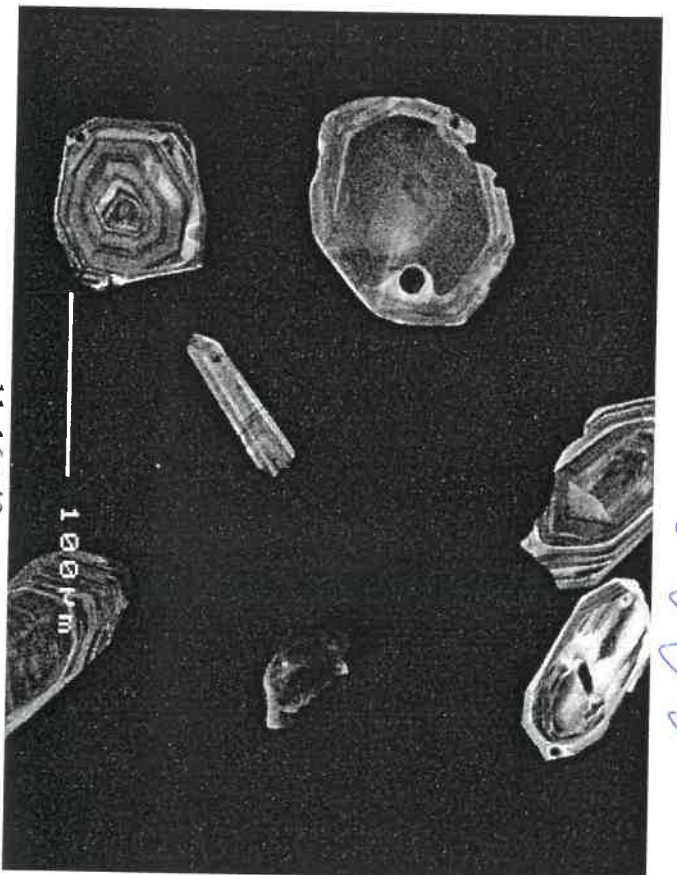
* 2680±7



c11c16b.tif

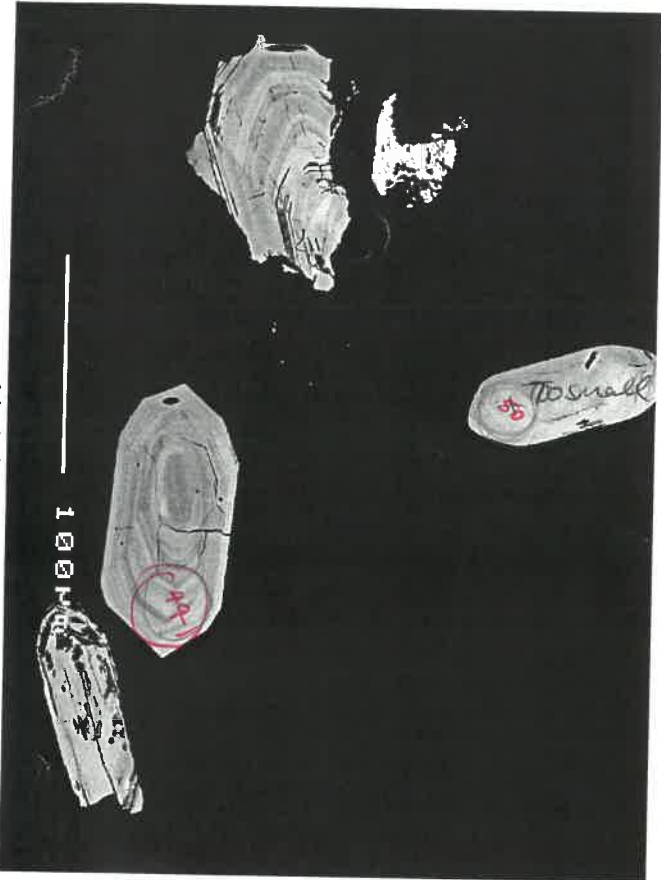
2678±3

* 2675±7



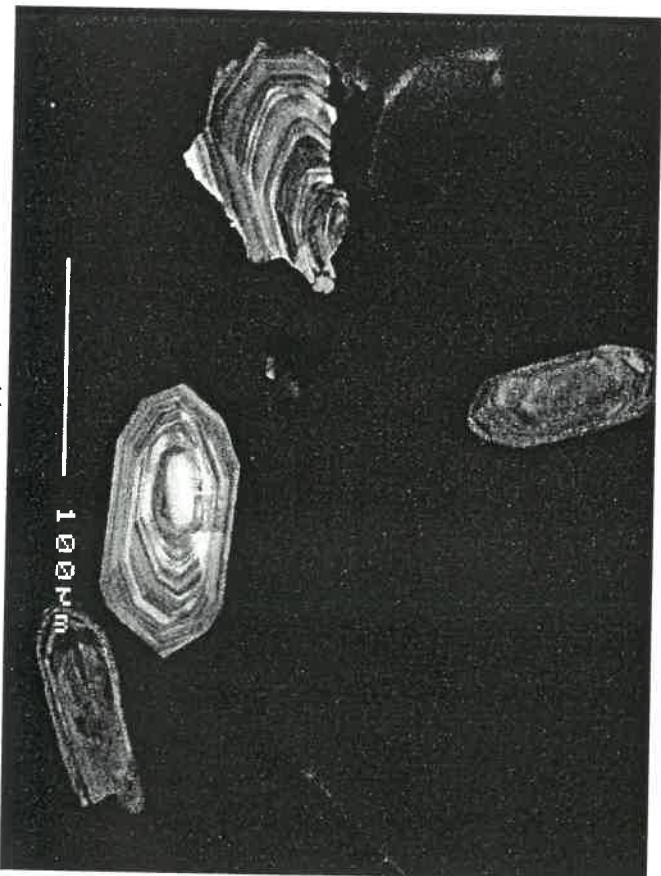
c11c16c.tif

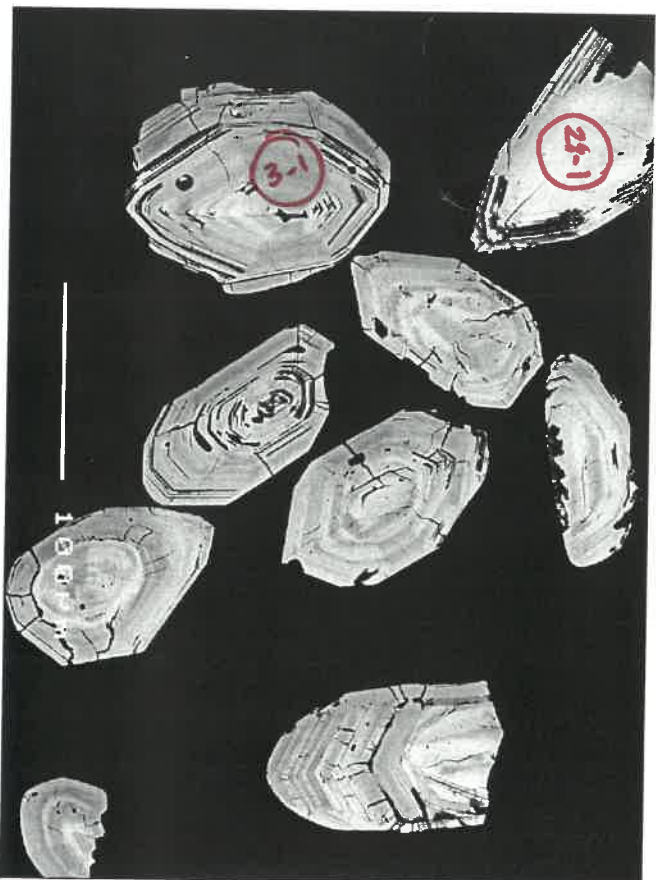
* 2675±7



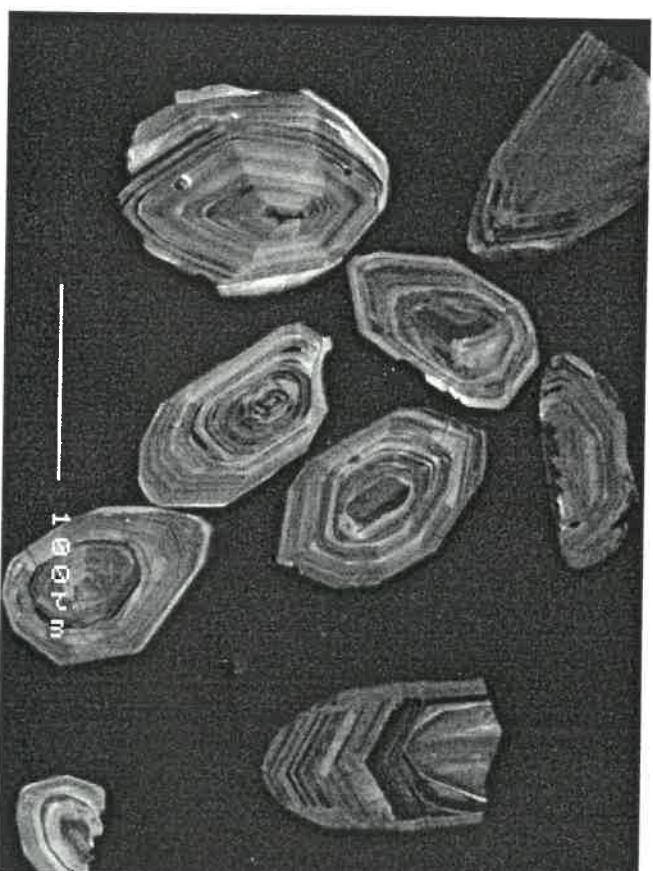
c11c17b.tif

c11c17c.tif

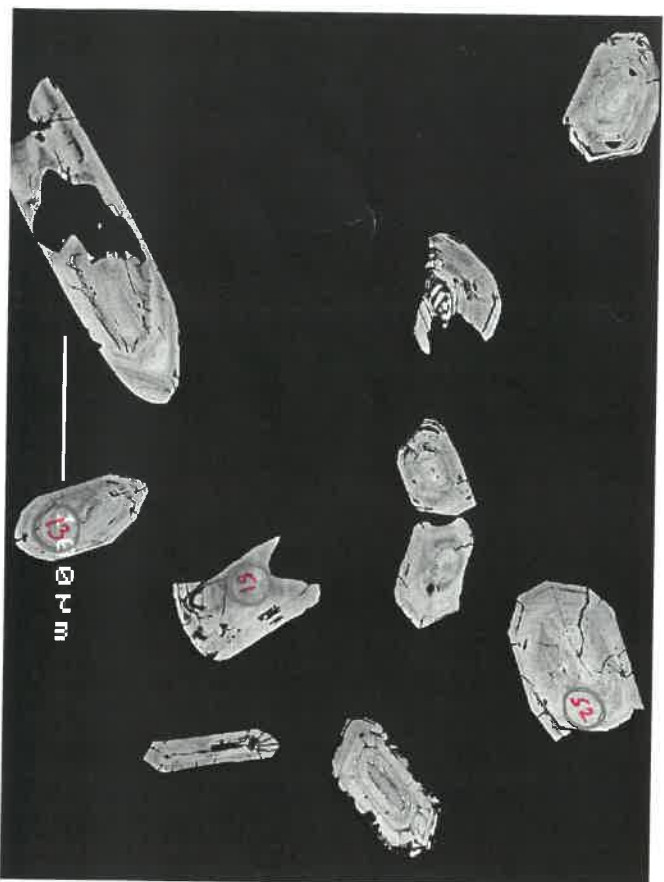




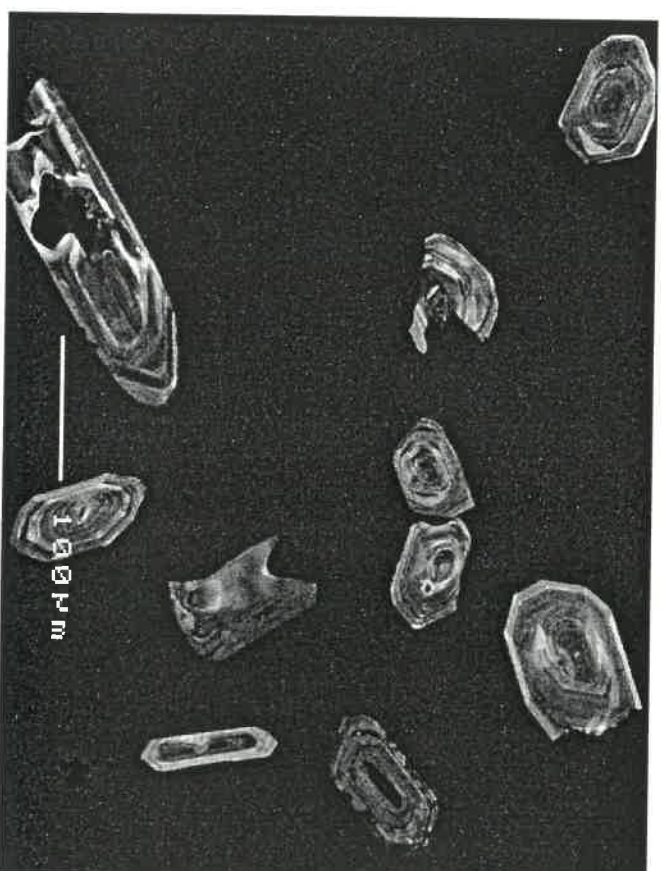
c11e21b.tif



c11e21c.tif



c11e23b.tif

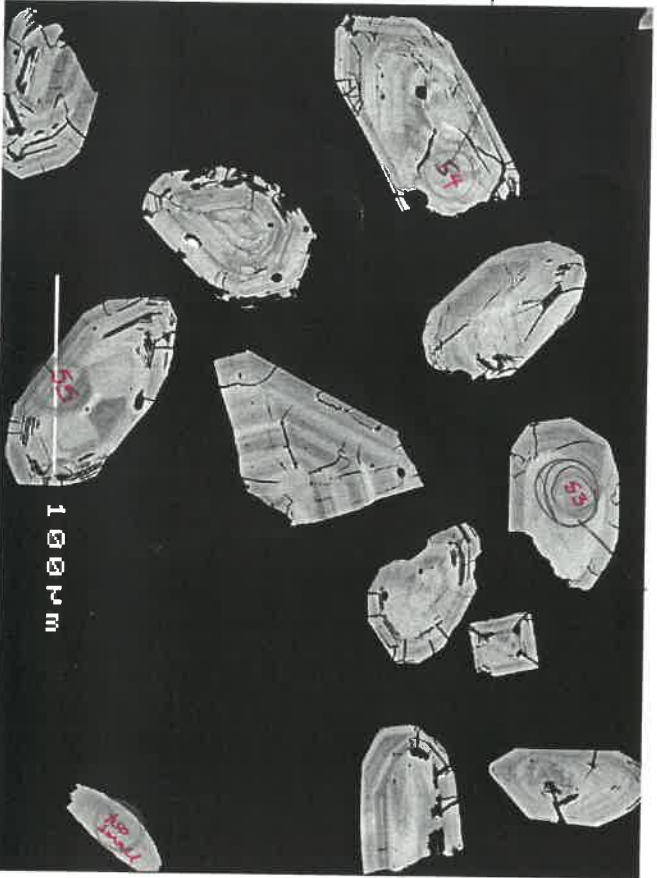


c11e23c.tif



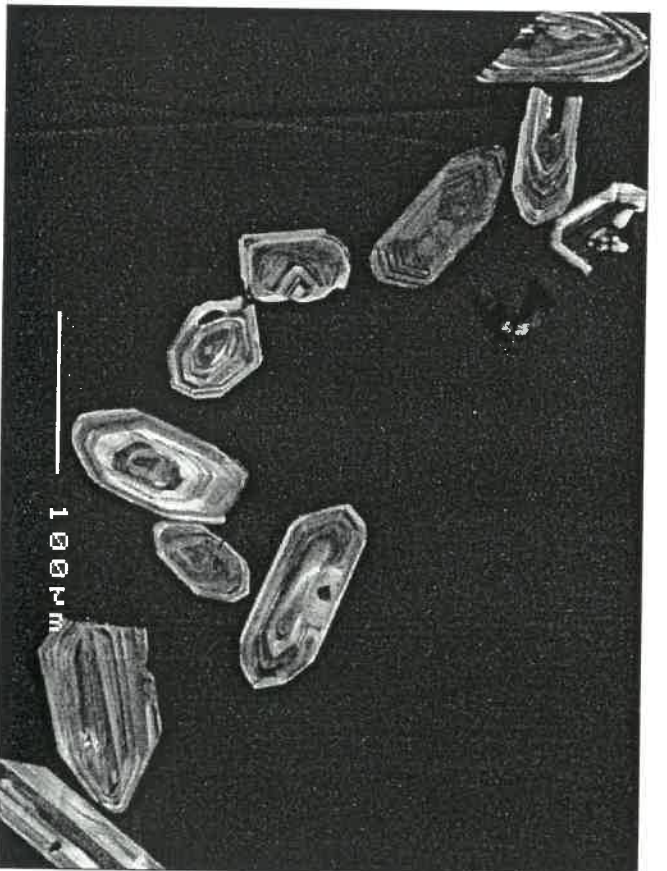
c11c25b.tif

S3-1

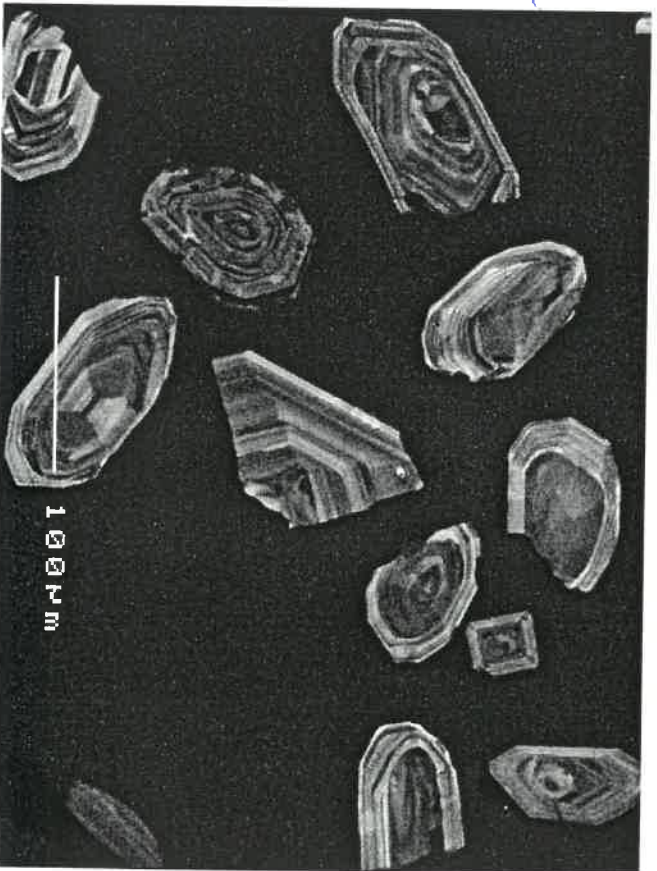


c11c27b.tif

S4-1

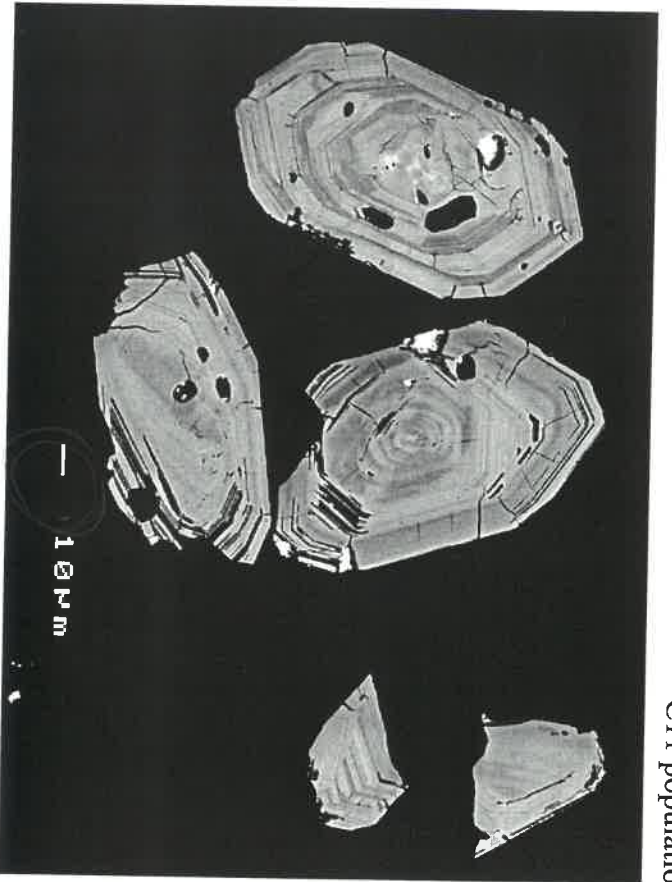


c11c25c.tif

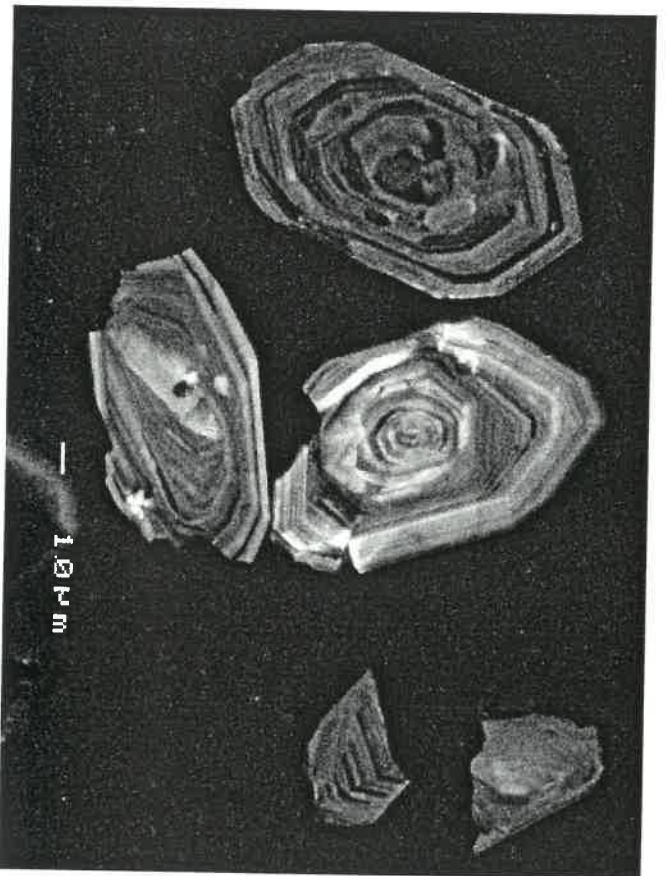


c11c27c.tif

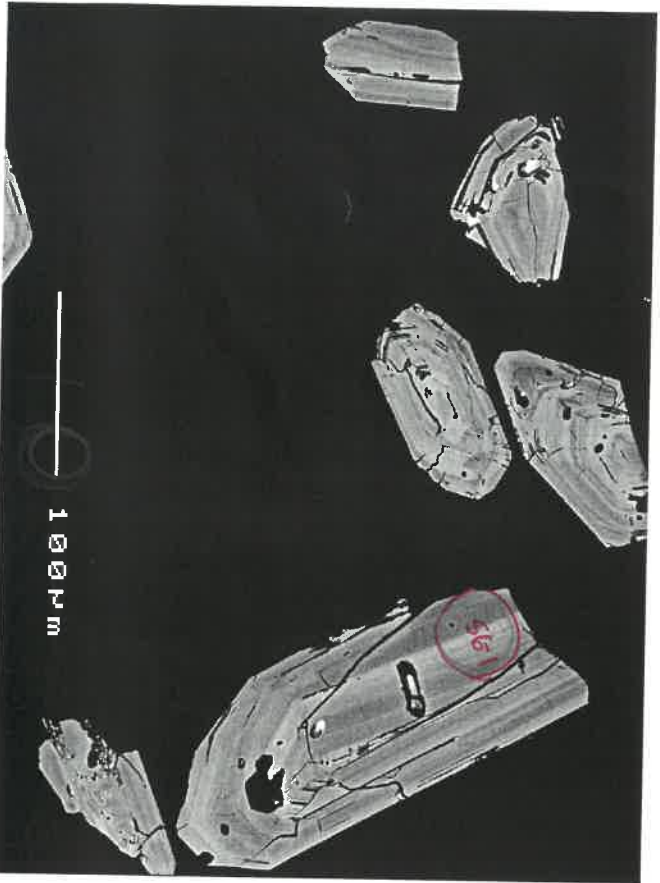
S3 *
26/7/92
Goe



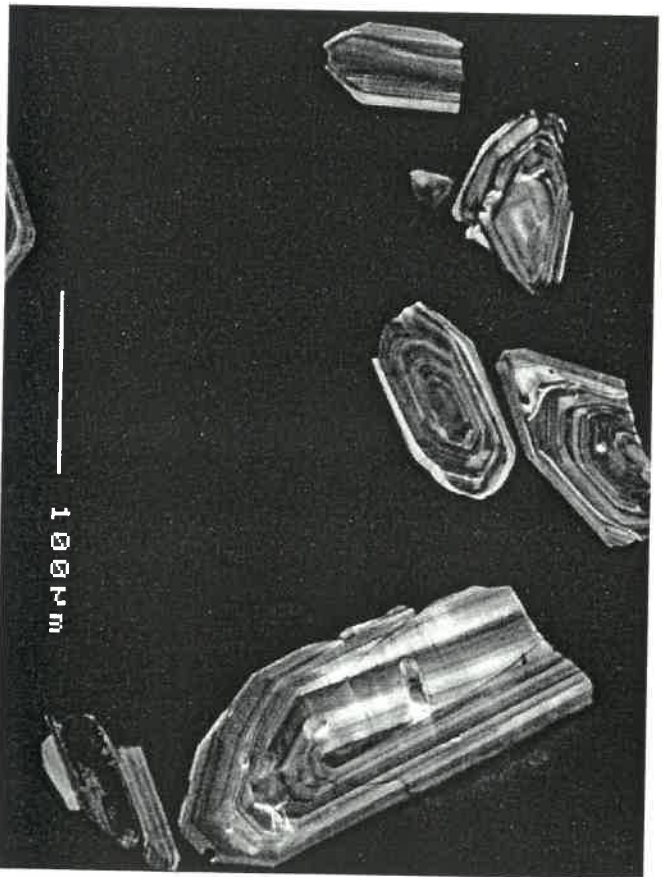
c11c32b.tif



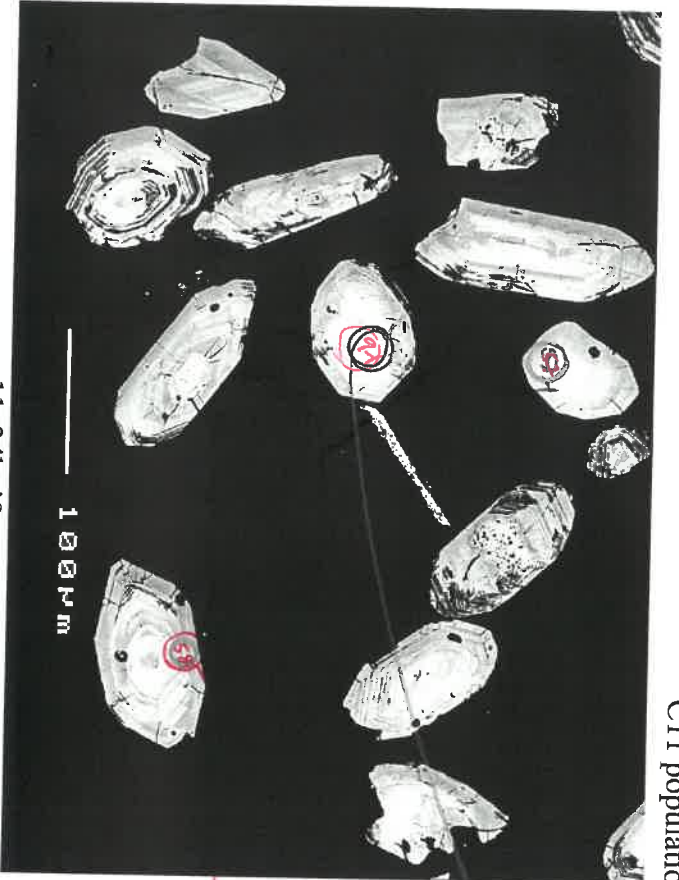
c11c32c.tif



c11c33b.tif



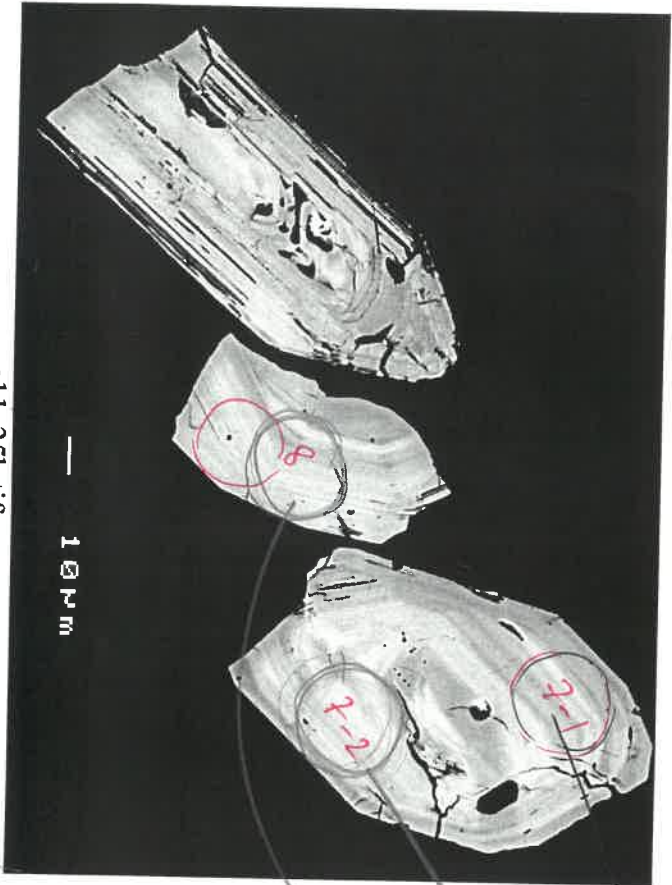
c11c33c.tif



c11c34b.tif

9-1 ✓

5-1

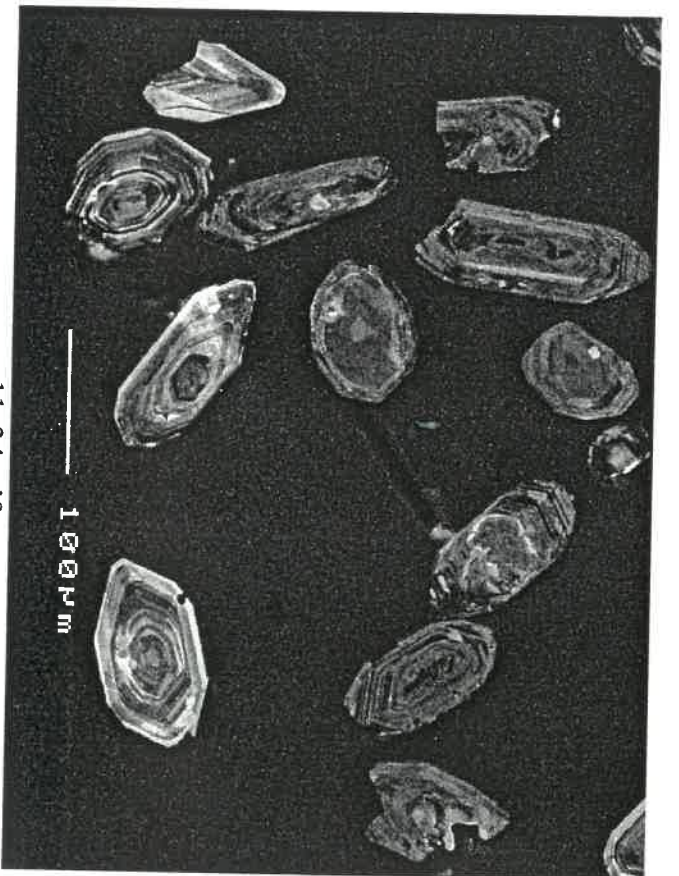


c11c35b.tif

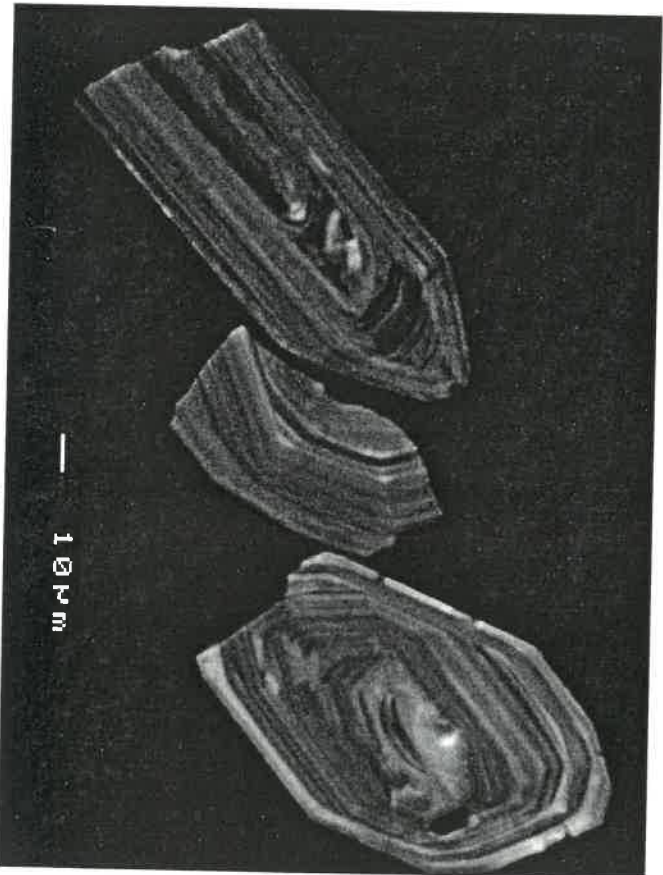
7-1 ✓

7-2 ✓

8-1 ✓



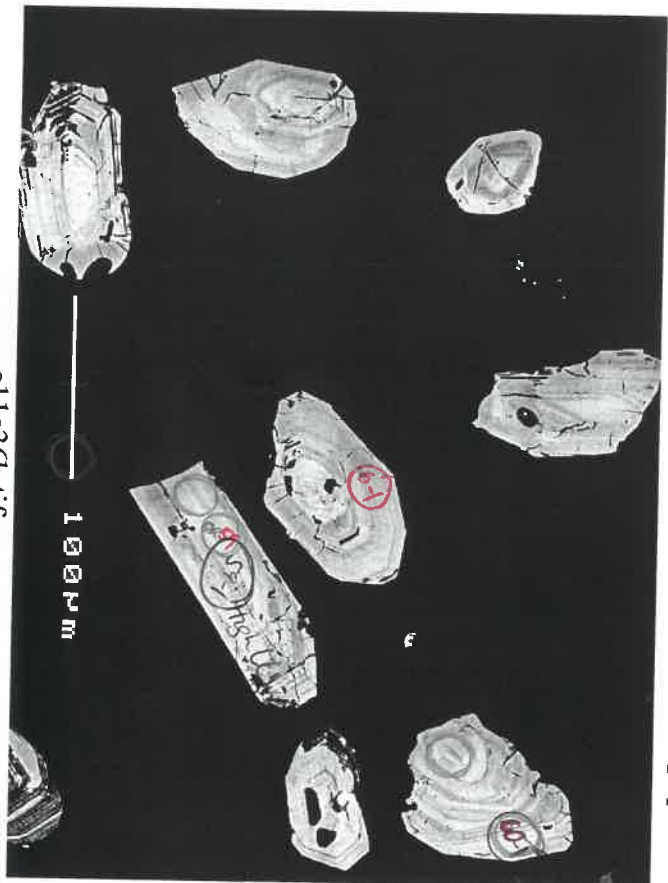
c11c34c.tif



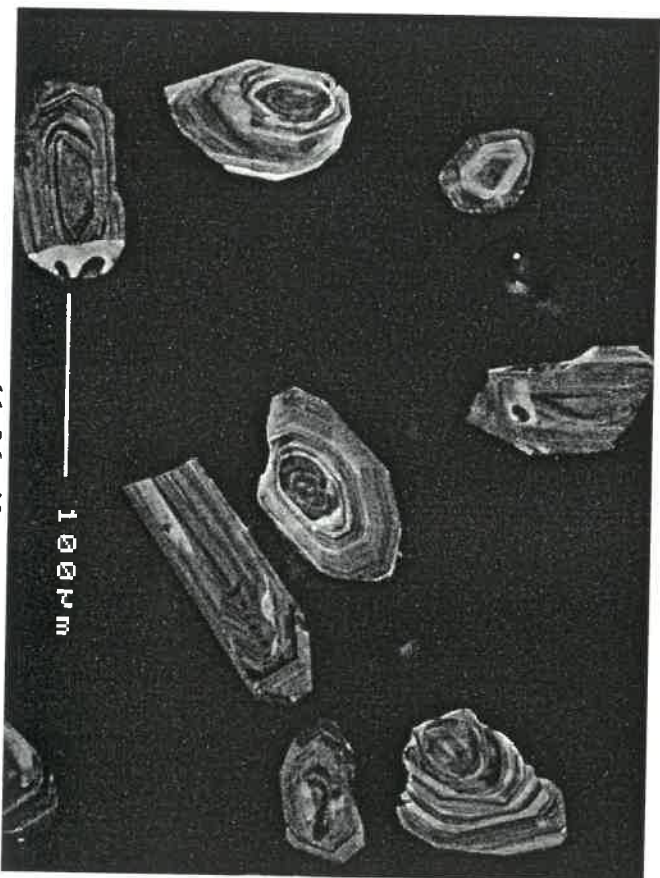
c11c35c.tif

C11 population C: ENGDS/133.6-137.5 AHP₀

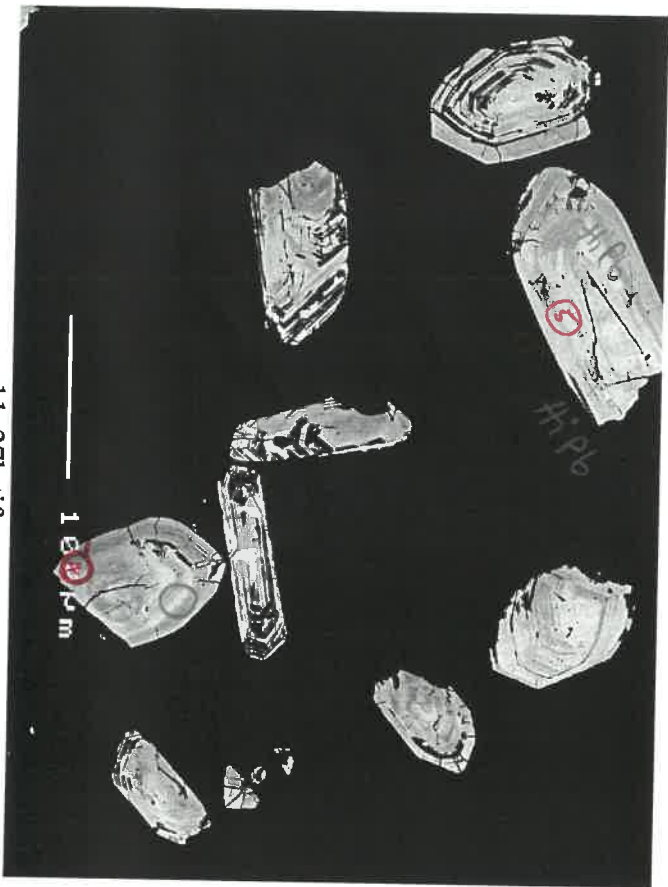
*not
20/10/06*



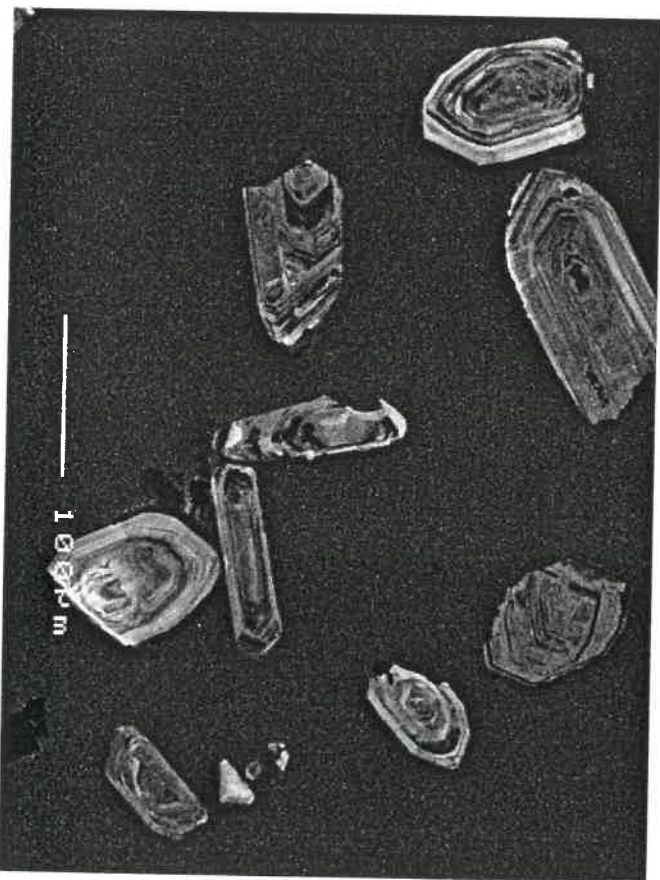
c11c36b.tif



c11c36c.tif



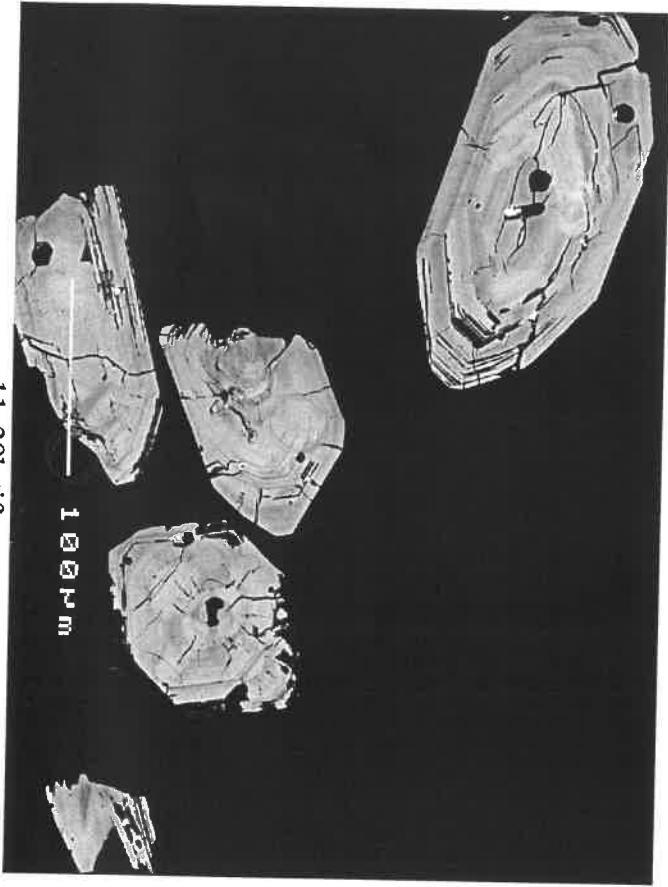
c11c37b.tif



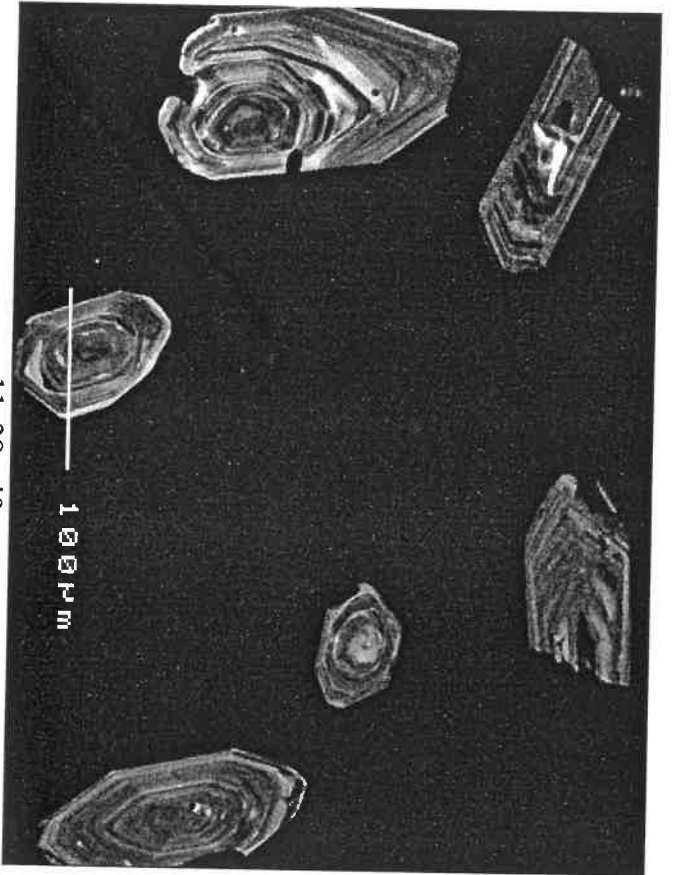
c11c37c.tif



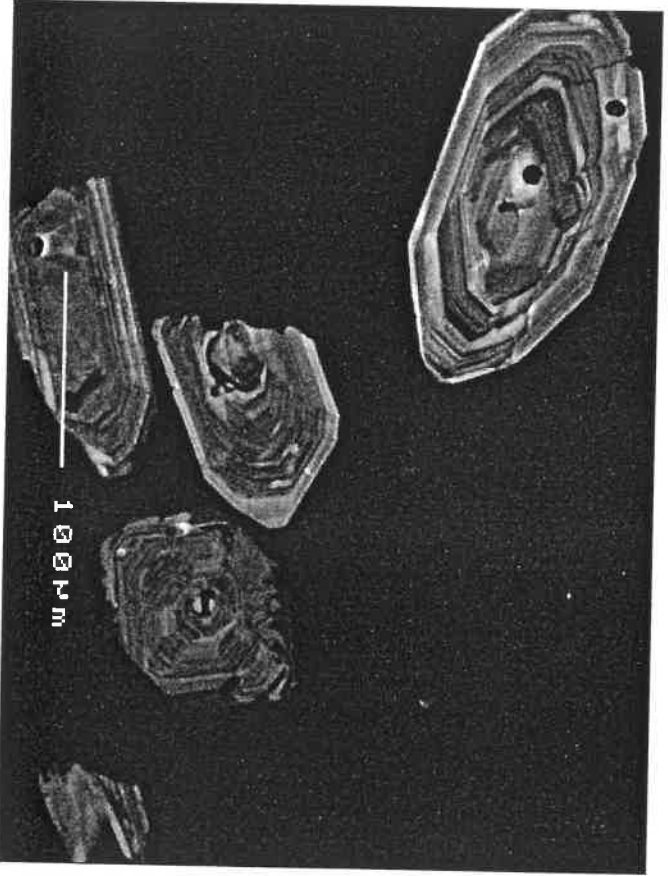
c11c38b.tif



c11c39b.tif

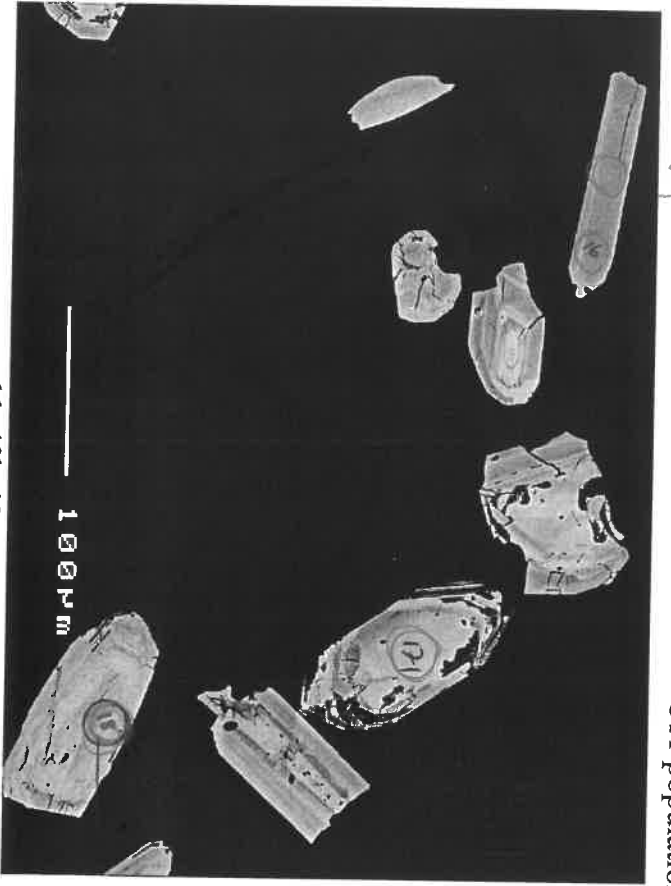


c11c38c.tif

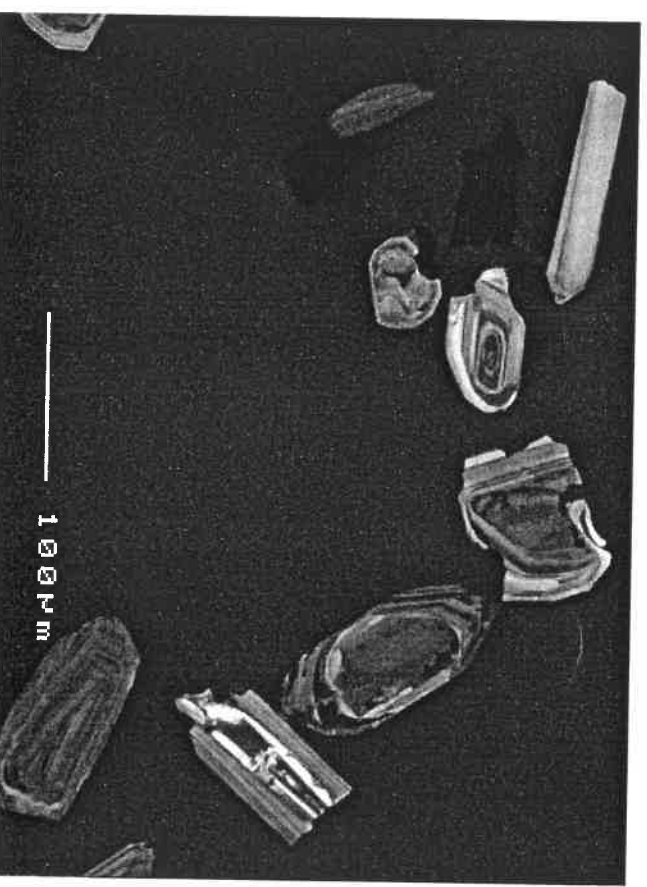


c11c39c.tif

C11 population C: ENGDS/133.6-137.5 AHPo



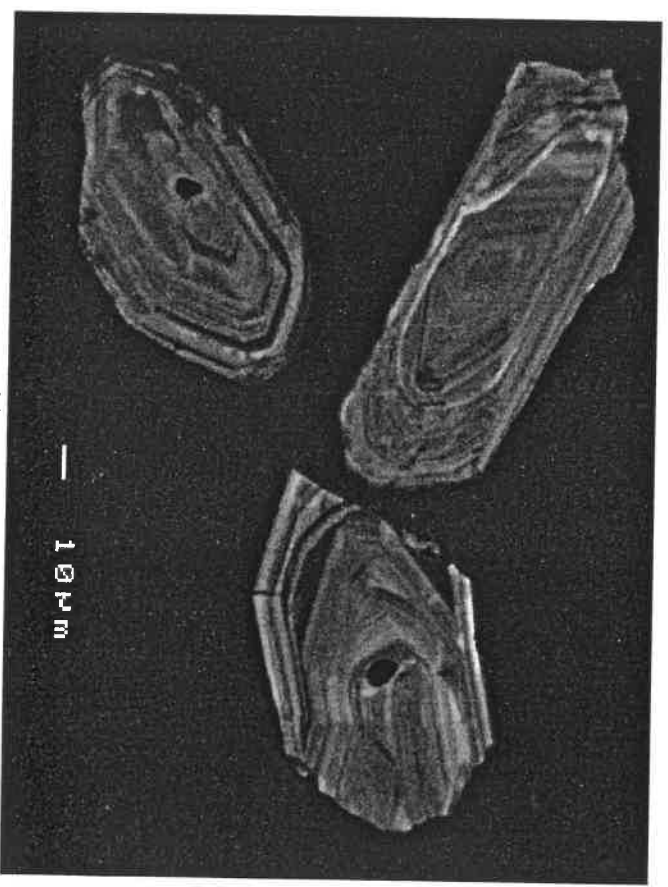
c11c40b.tif



c11c40c.tif



c11c41b.tif



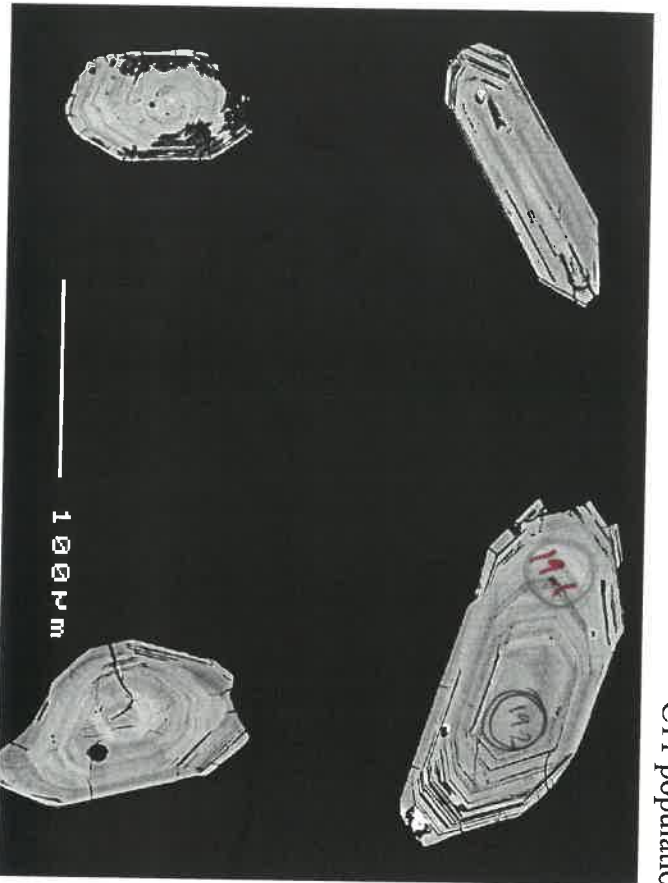
c11c41c.tif

5e

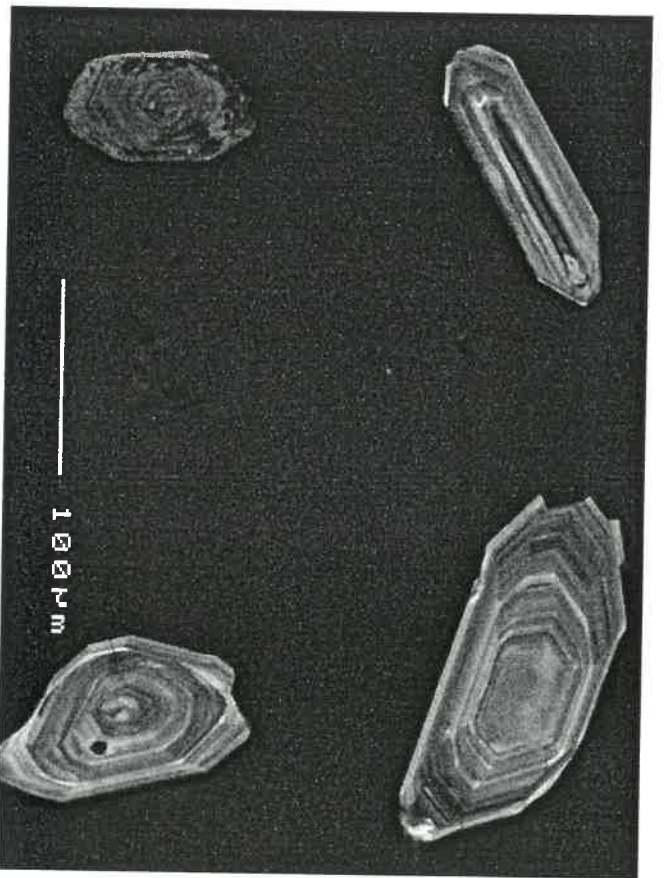
14

18-1 2002
18-1 2002
2011

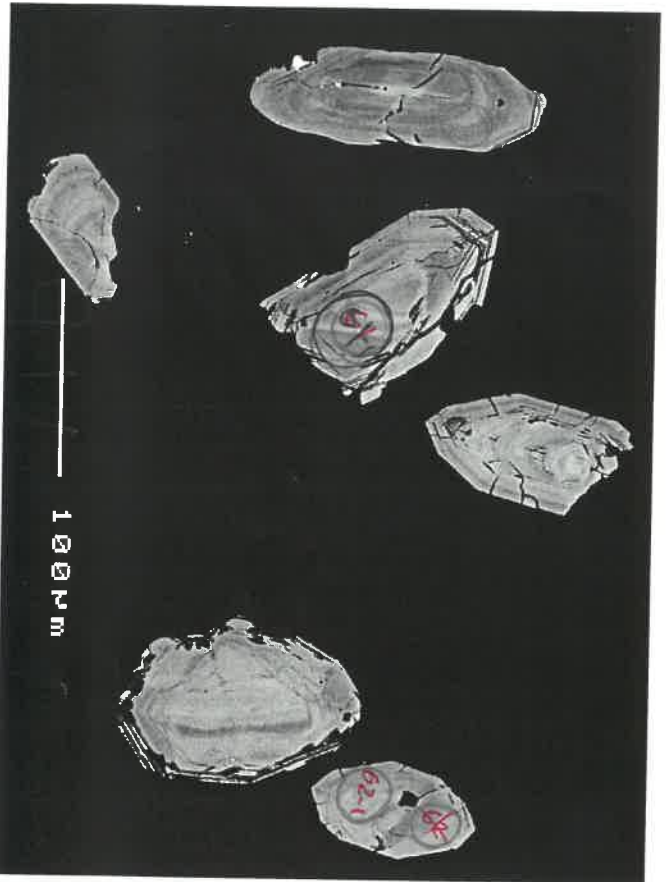
?
?



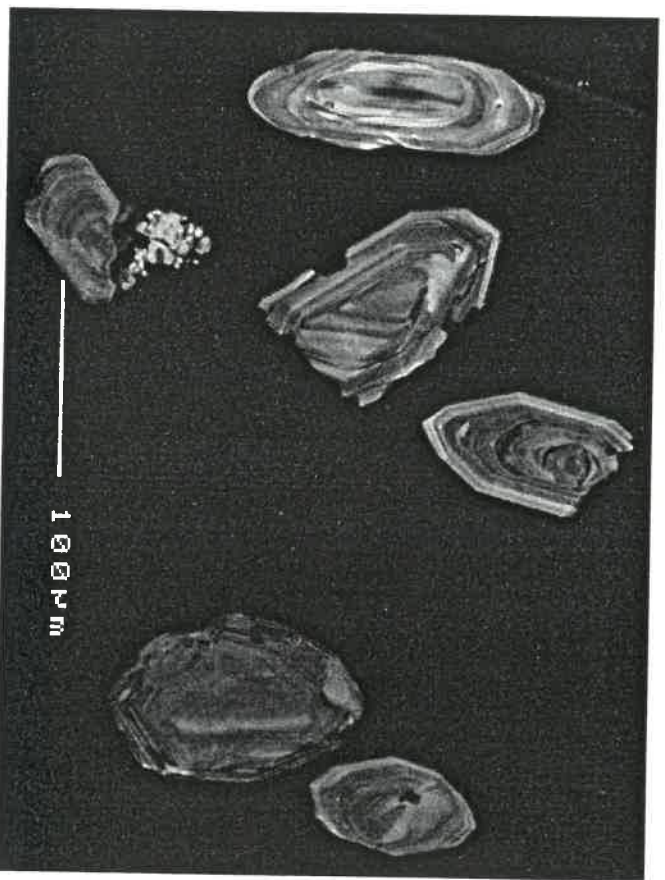
c11c42b.tif



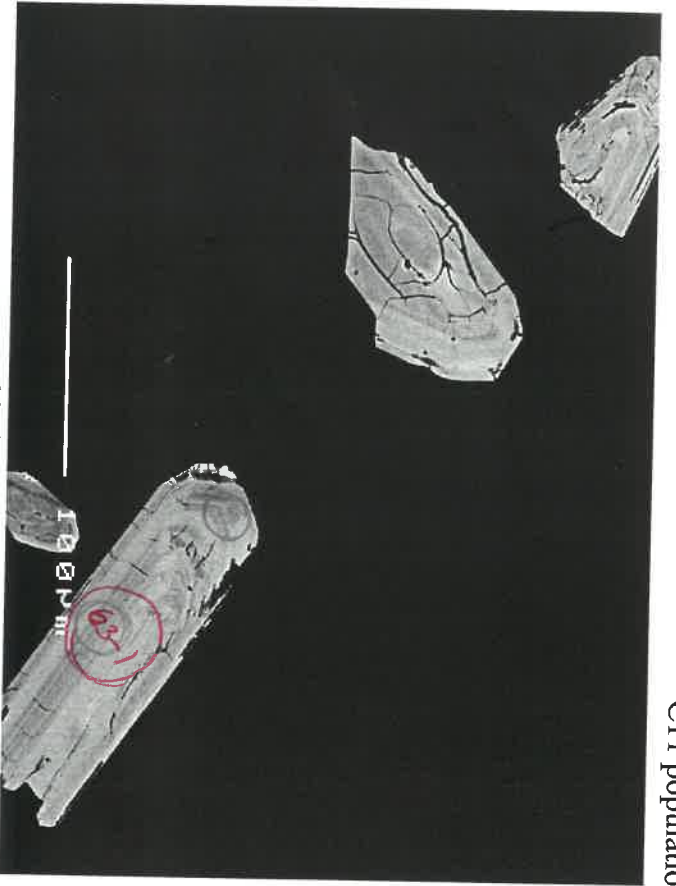
c11c42c.tif



c11c43b.tif

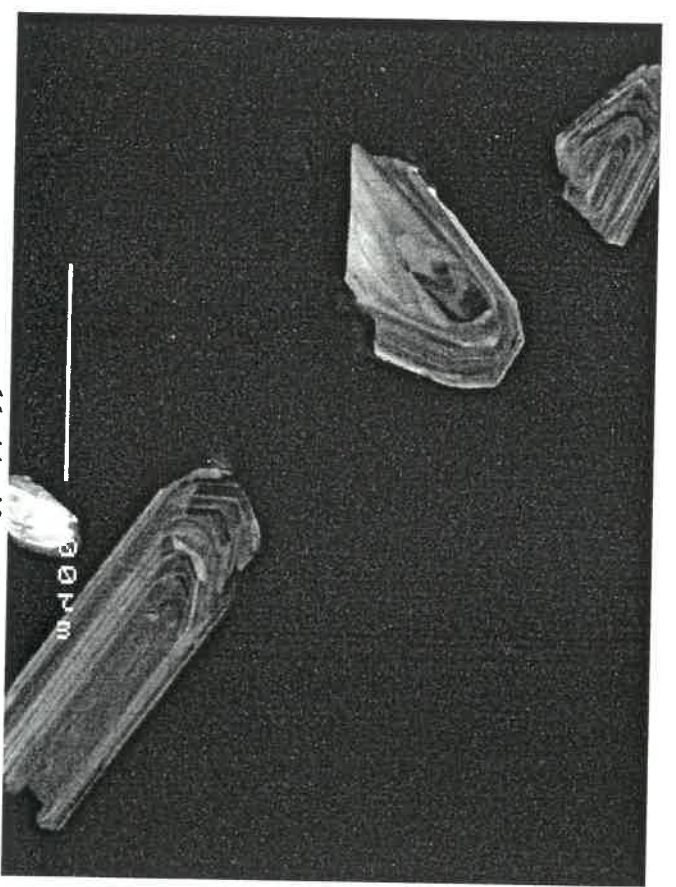


c11c43c.tif



1497

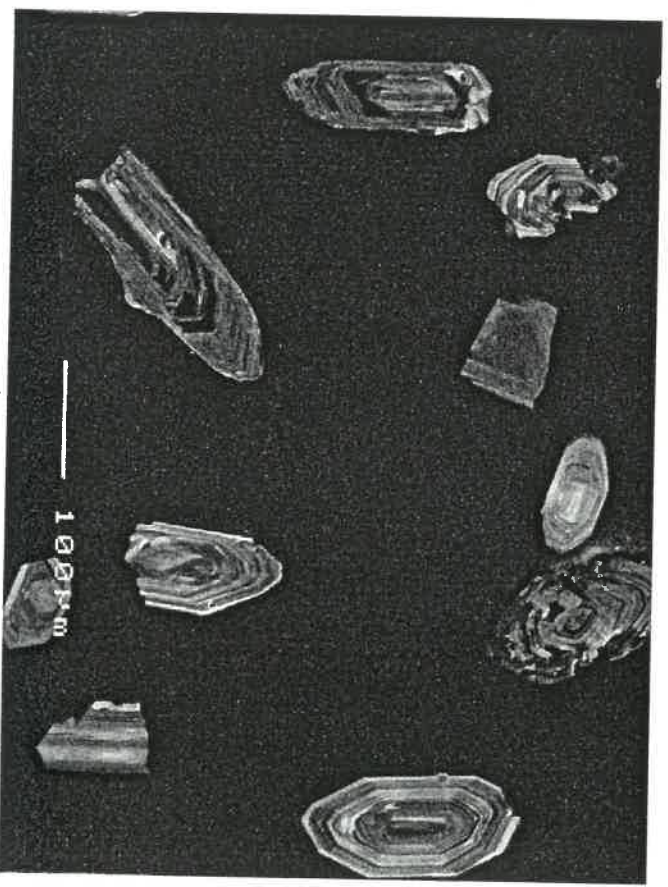
c11c44b.tif



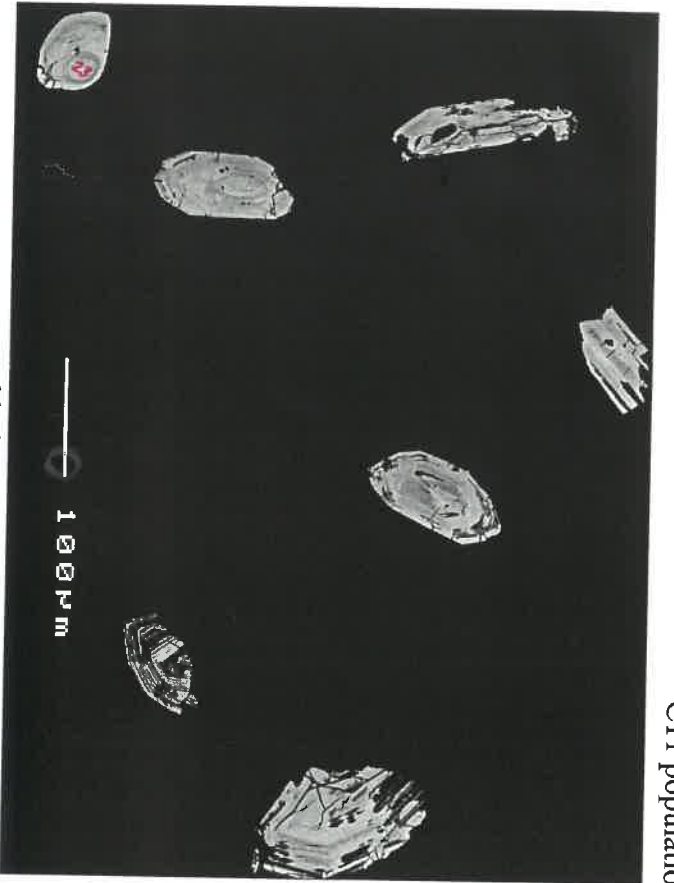
c11c44c.tif



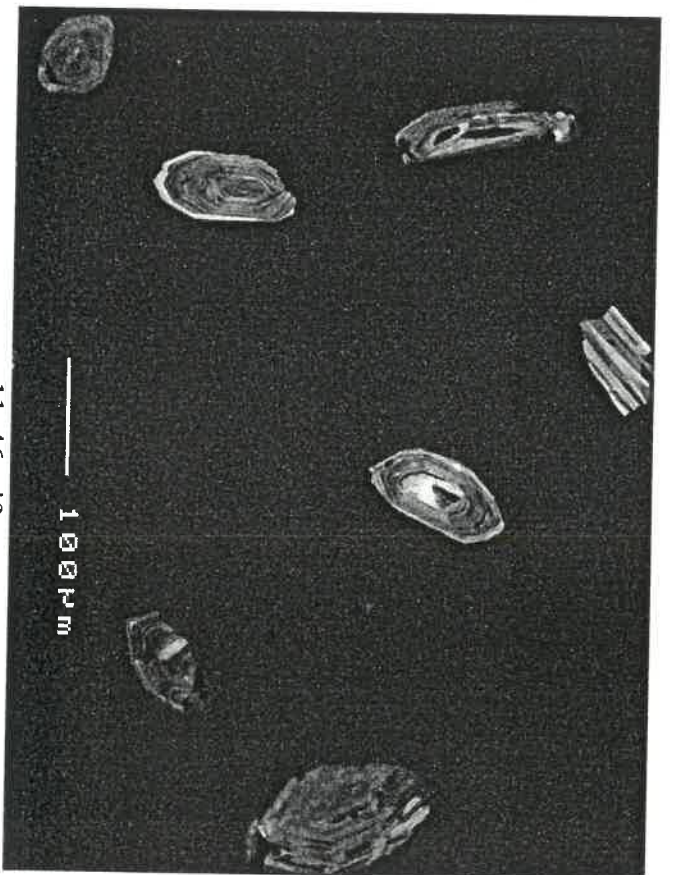
c11c45b.tif



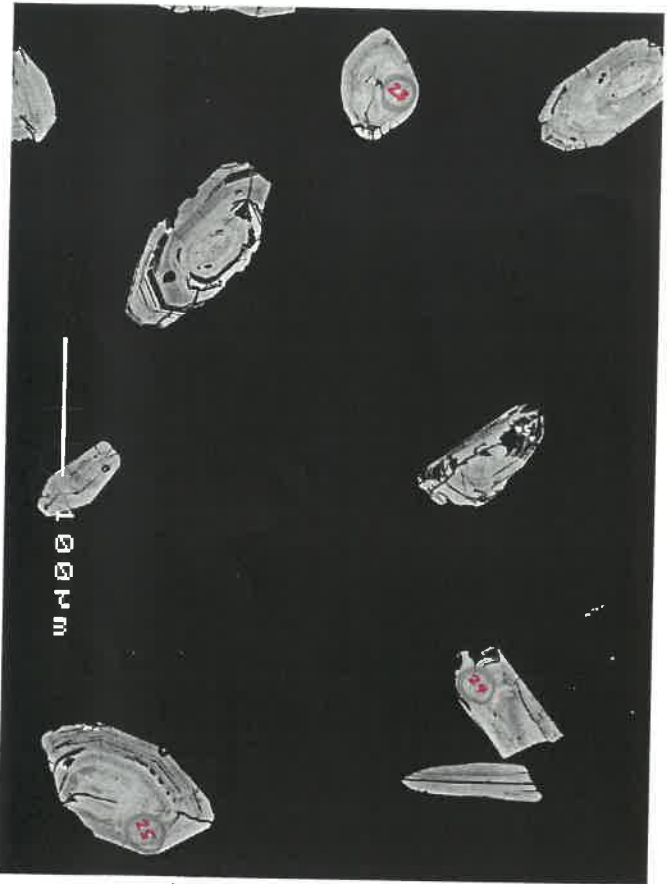
c11c45c.tif



c11c46b.tif

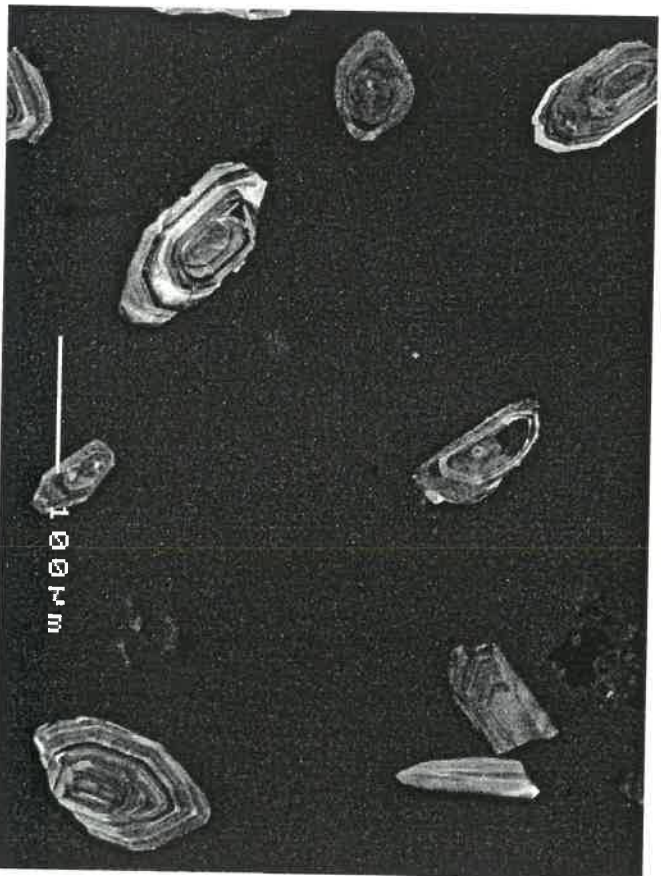


c11c46c.tif



c11c47b.tif

all too small
x
x
not too big
(grainy polished down)

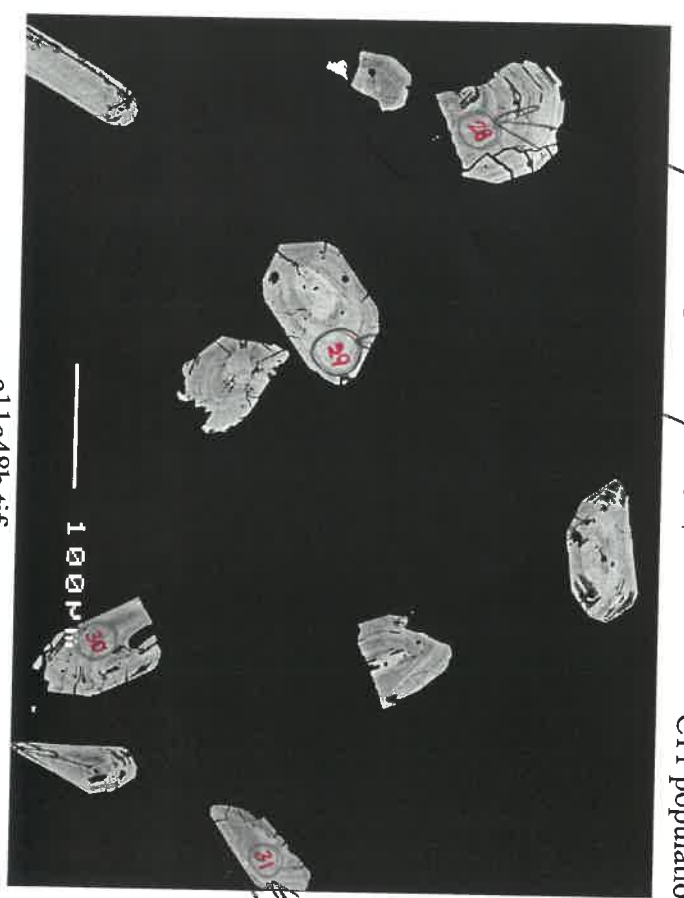


c11c47c.tif

beam too big

29-1

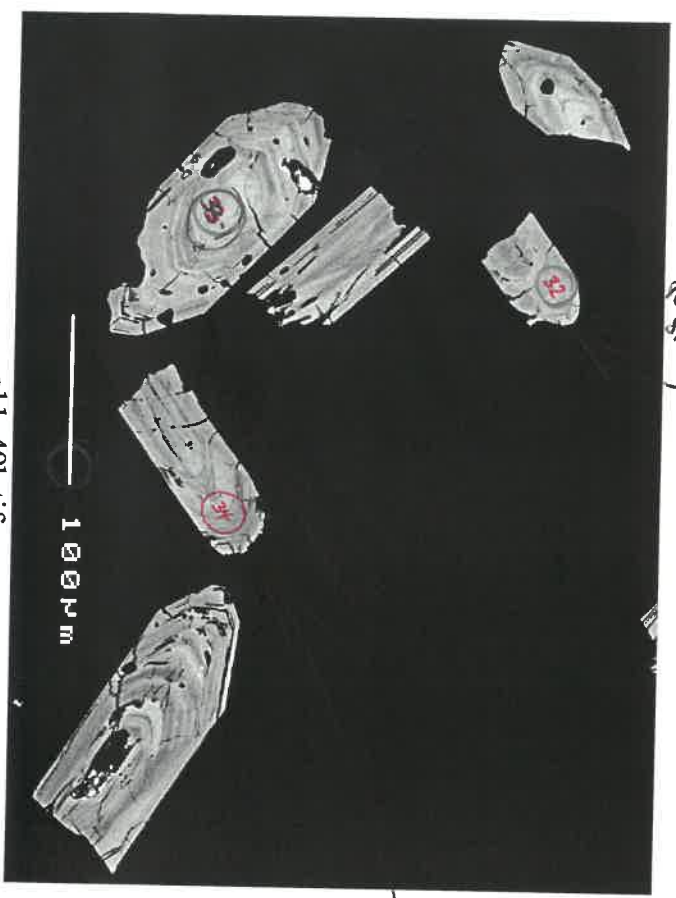
C11 population C: ENGDS/133.6-137.5 AHPo



c11c48b.tif

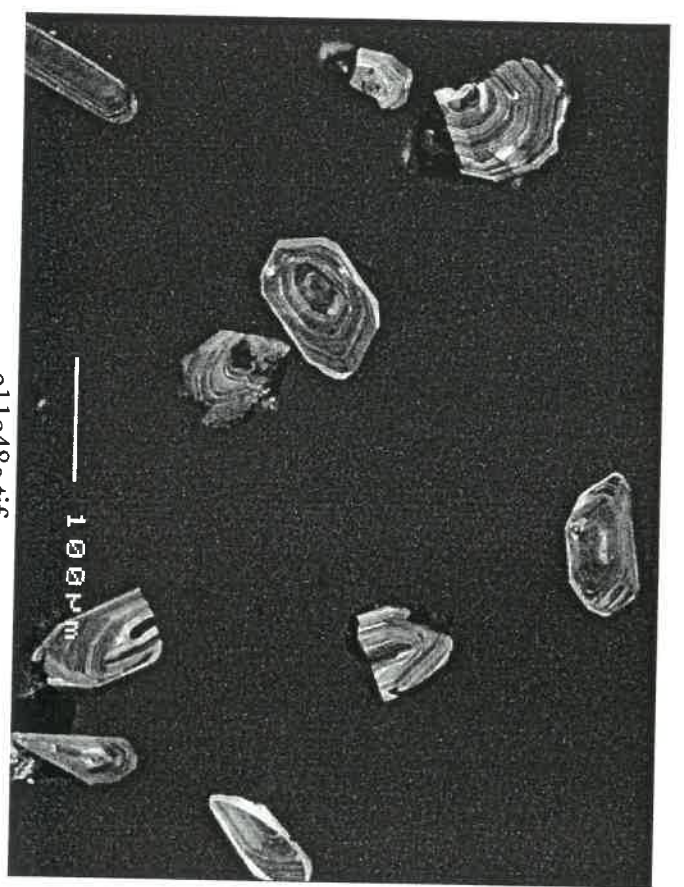
too small

too small

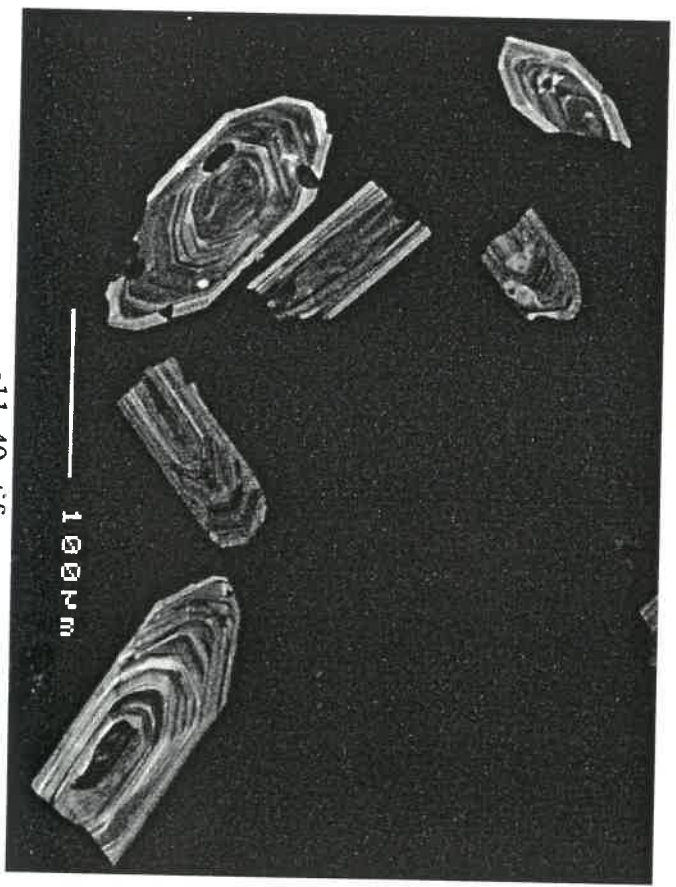


c11c49b.tif

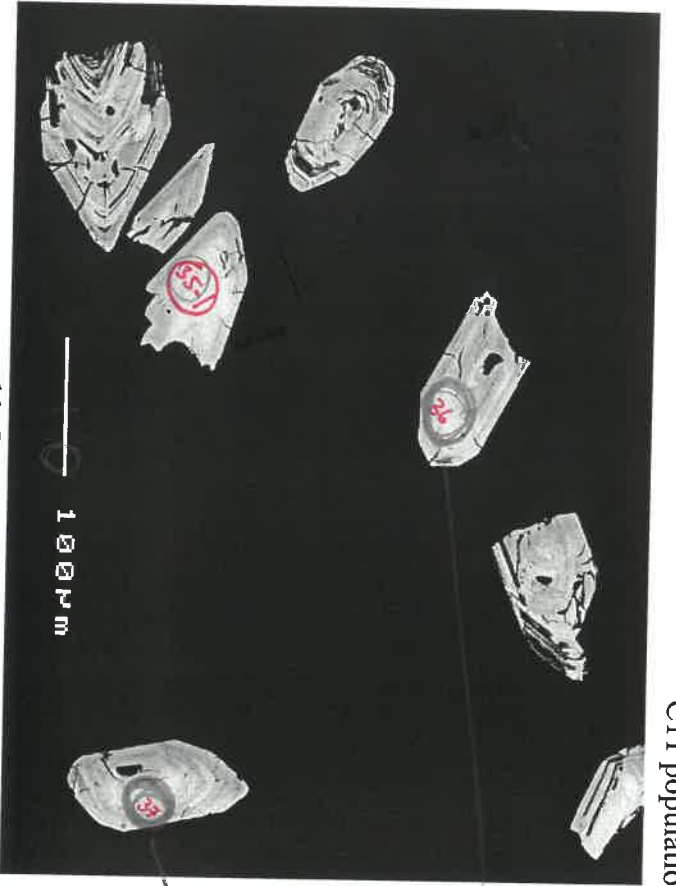
too small



c11c48c.tif

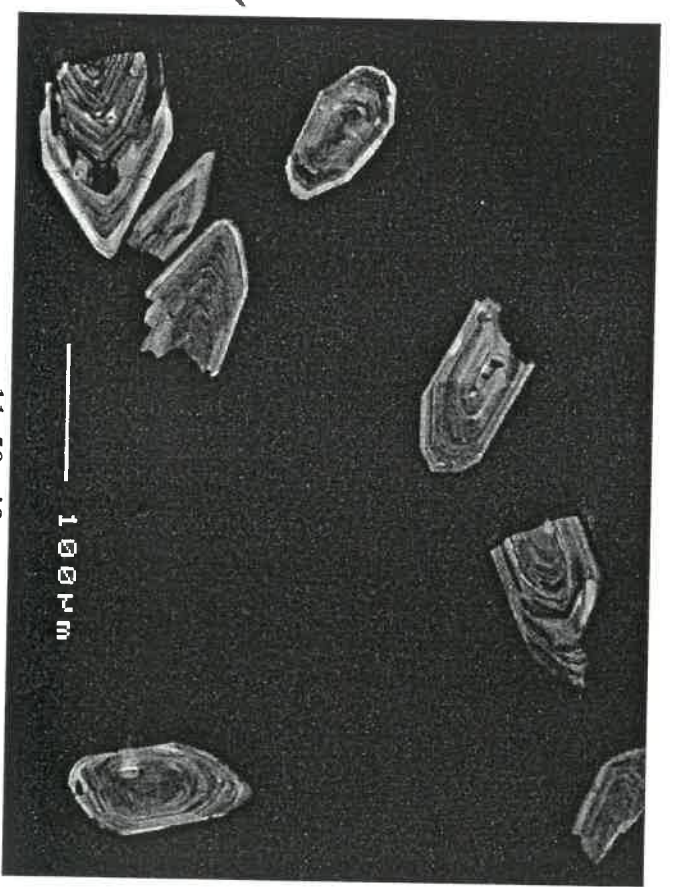


c11c49c.tif

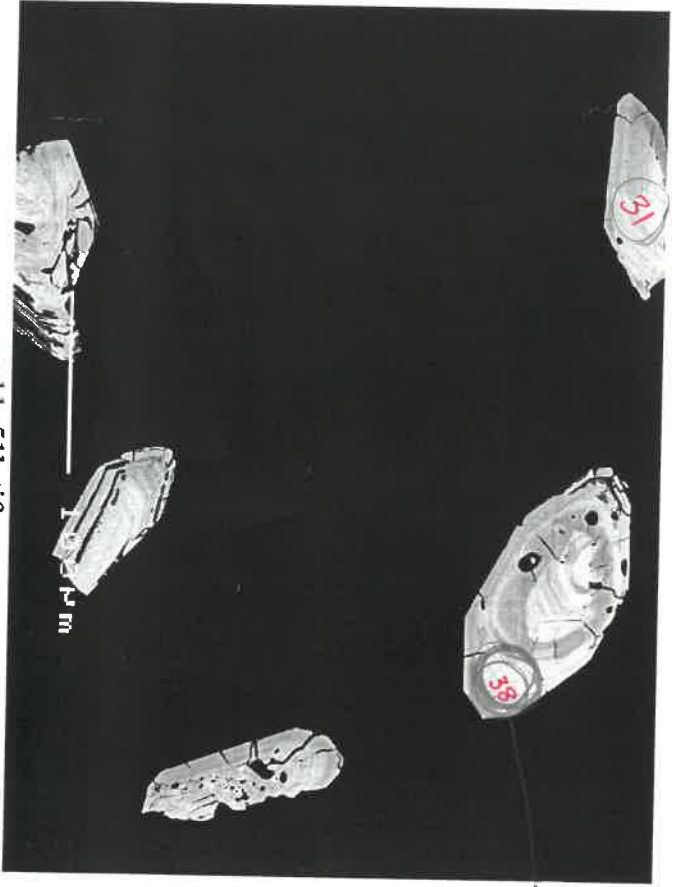


c11c50b.tif

x
39-1v

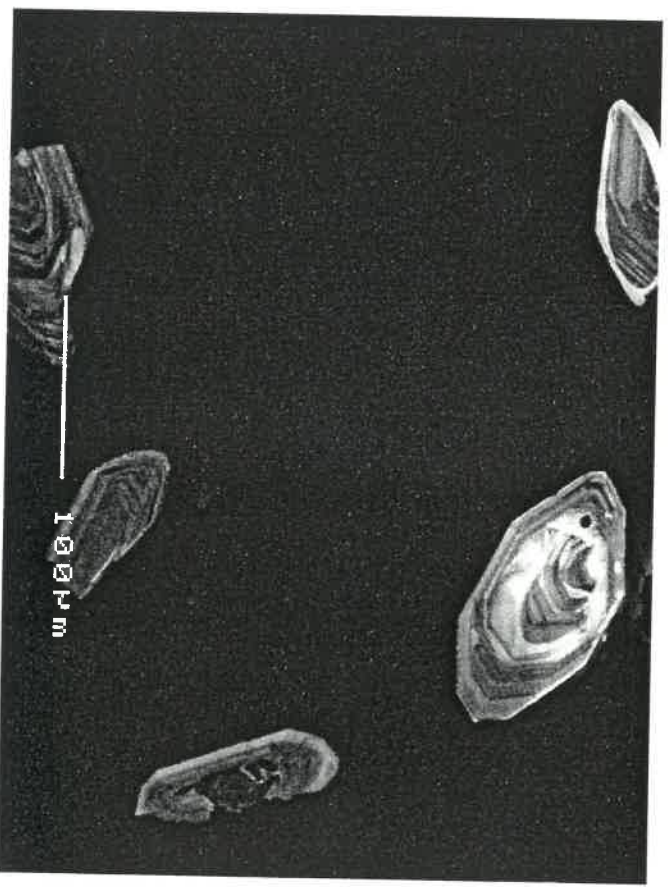


c11c50c.tif



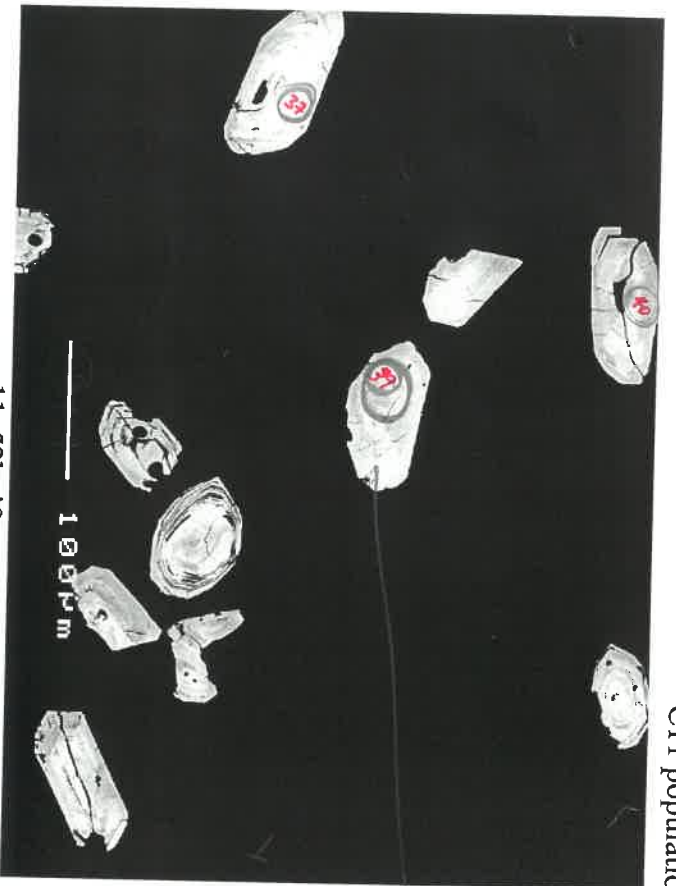
c11c51b.tif

x 31-1v
x (und good)



c11c51c.tif

C11 population C: ENGDS/133.6-137.5 AHPo

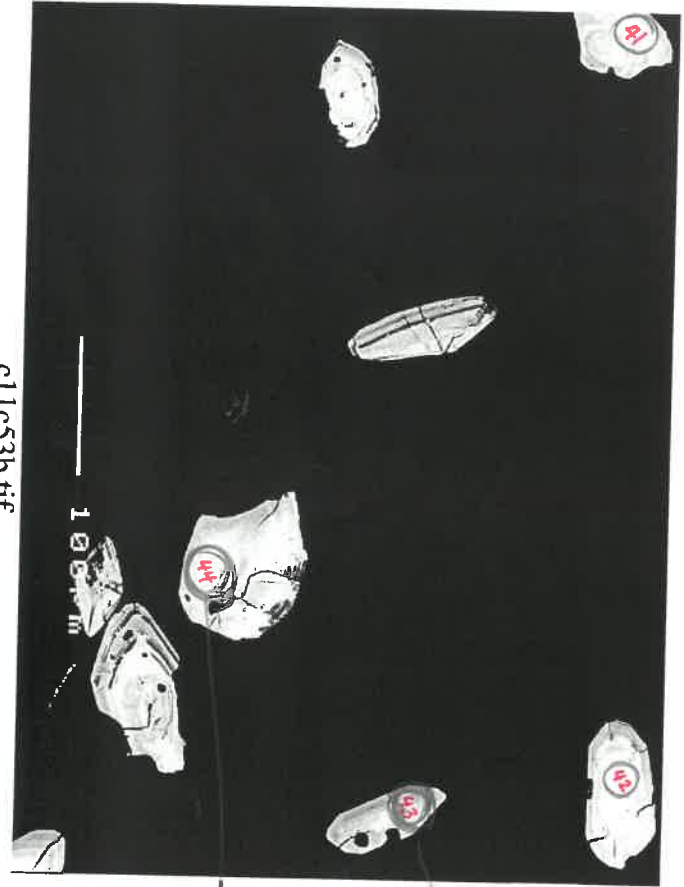


c11c52b.tif

X

239-1 ✓

X

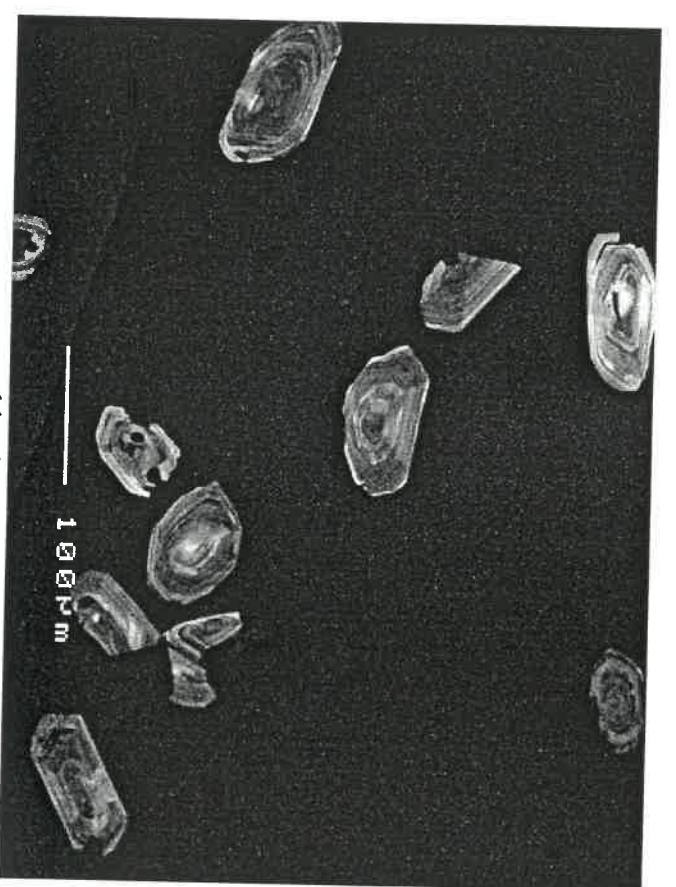


c11c53b.tif

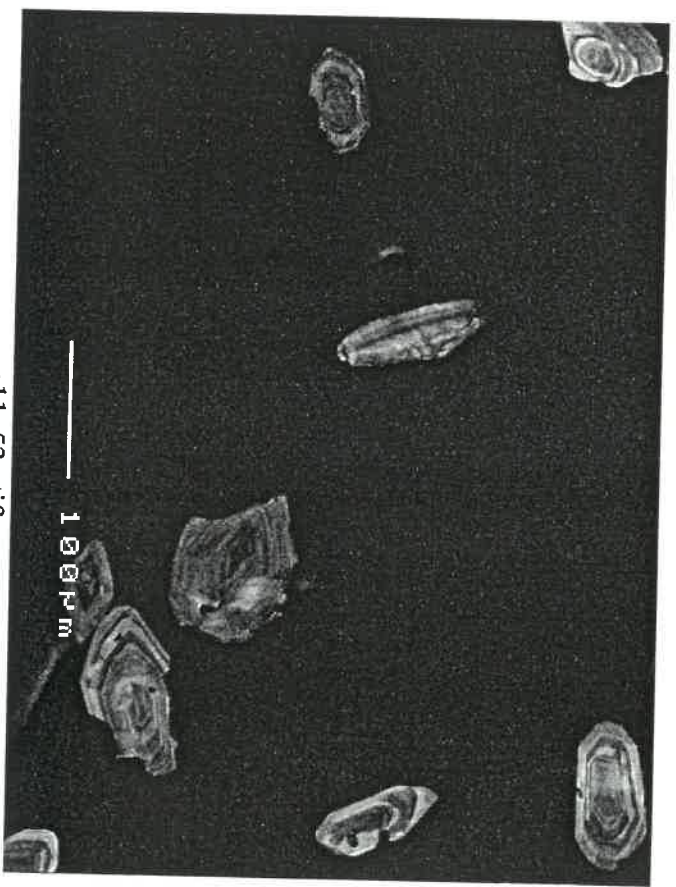
42-1 ✓

43-1 ✓

* 44-1 ✓



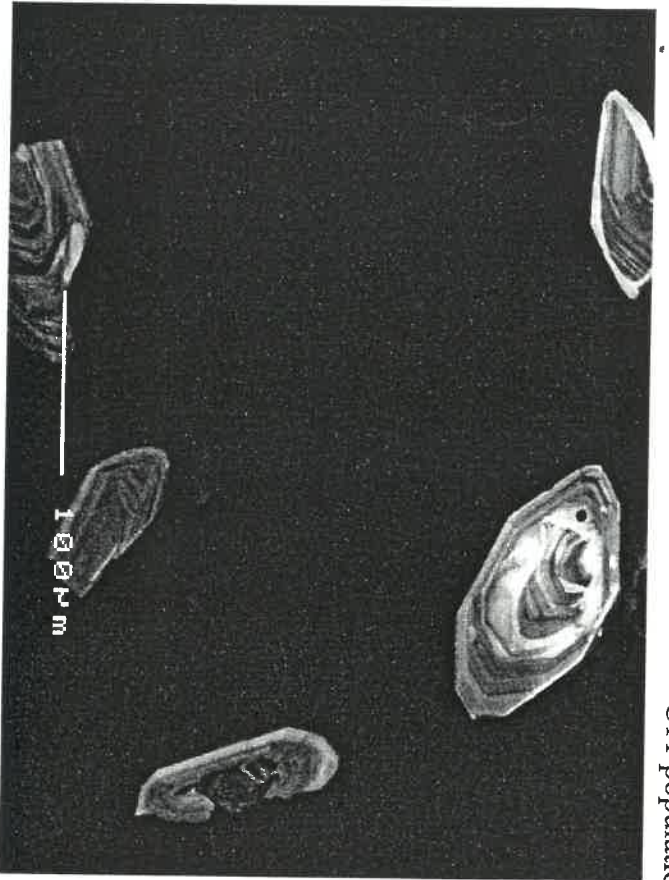
c11c52c.tif



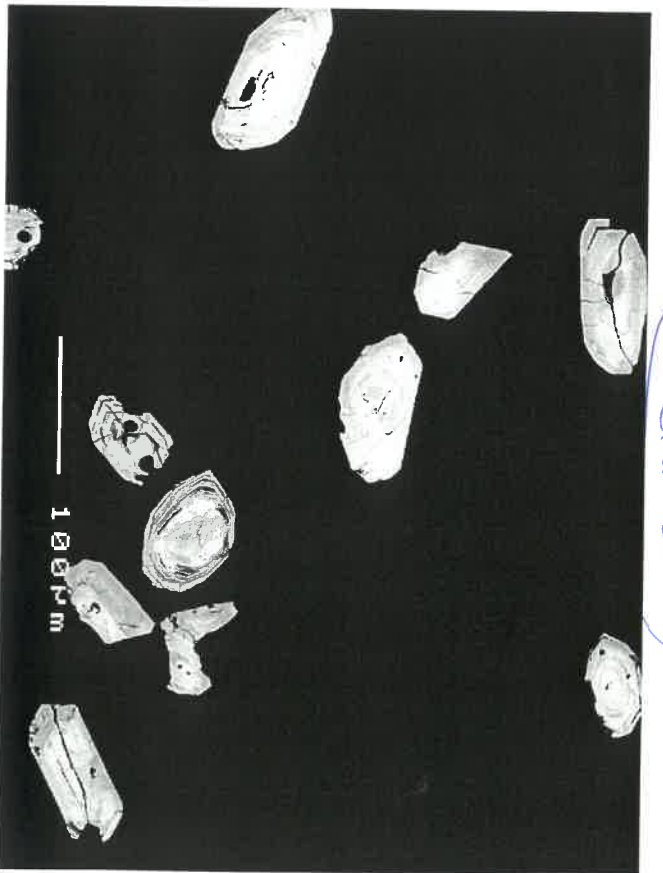
c11c53c.tif

C11 population C: ENGD5/133.6-137.5 AHPo

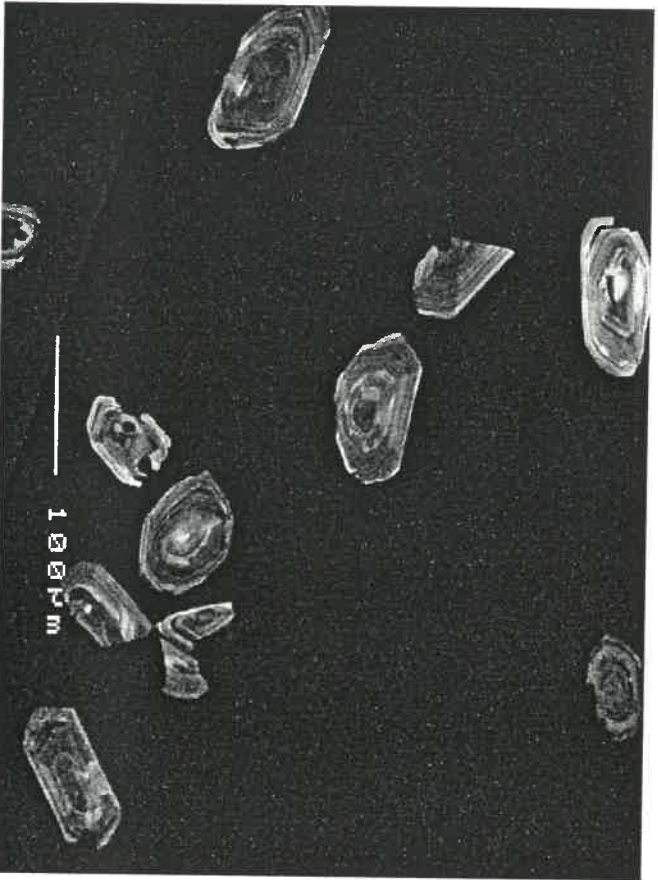
extras



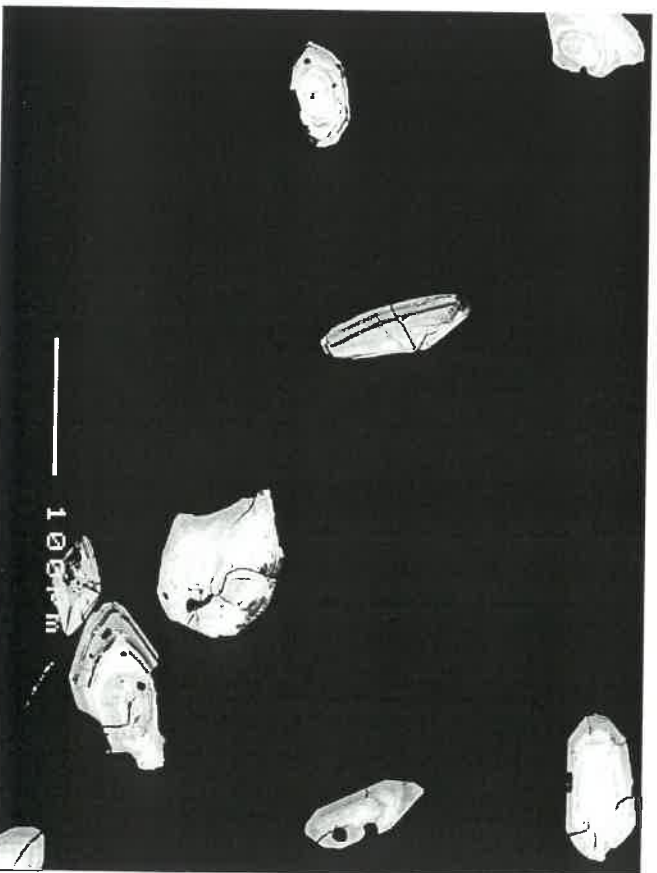
c11c51c.tif



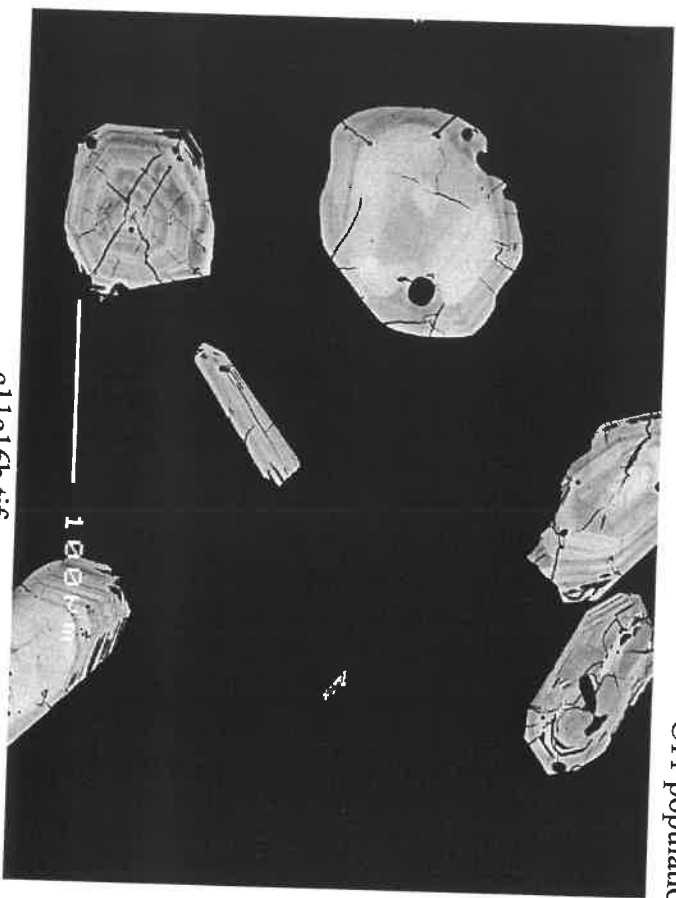
c11c52b.tif



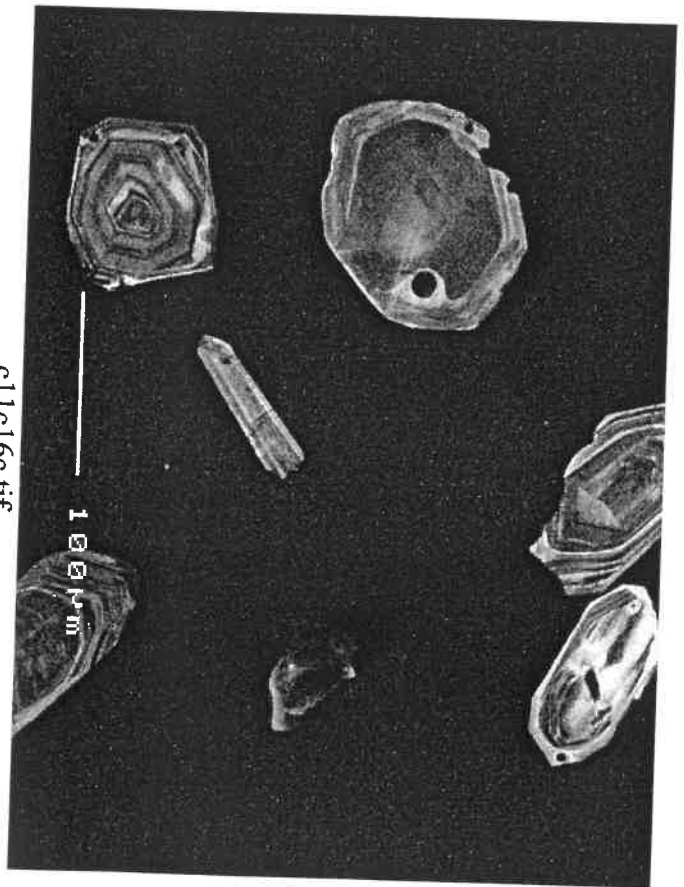
c11c52c.tif



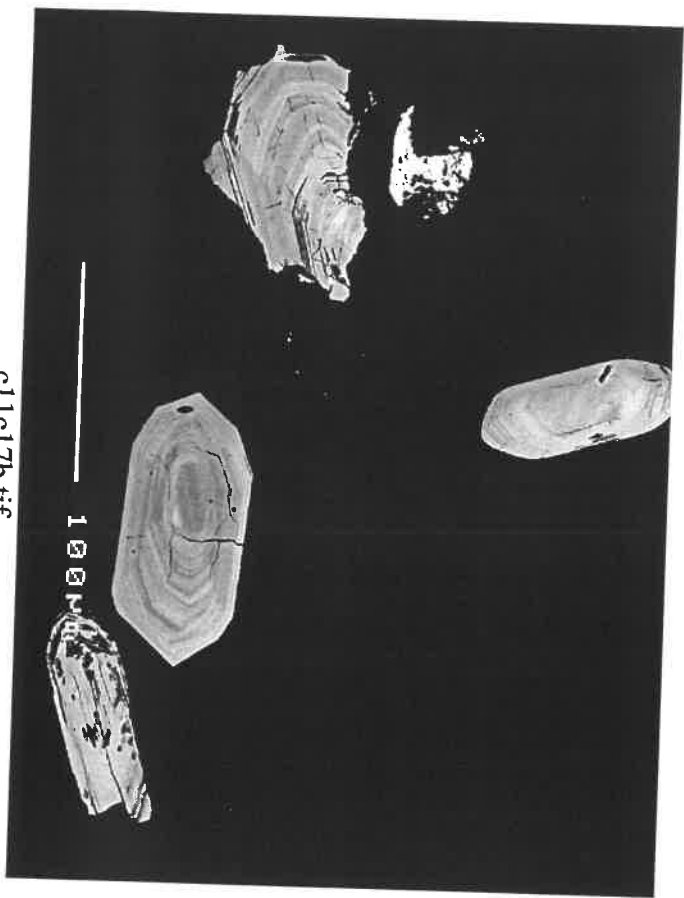
c11c53b.tif



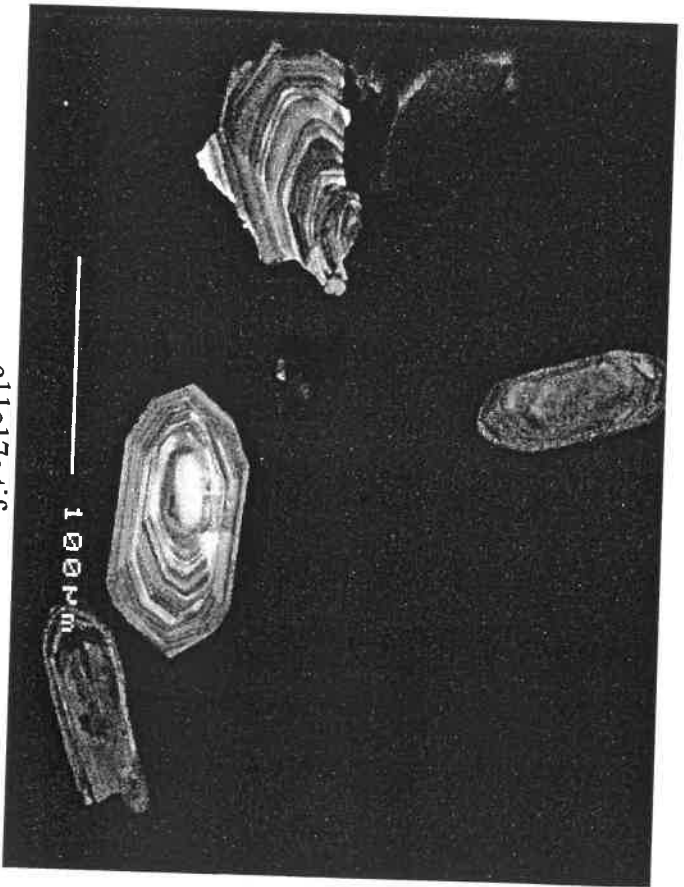
c11c16b.tif



c11c16c.tif



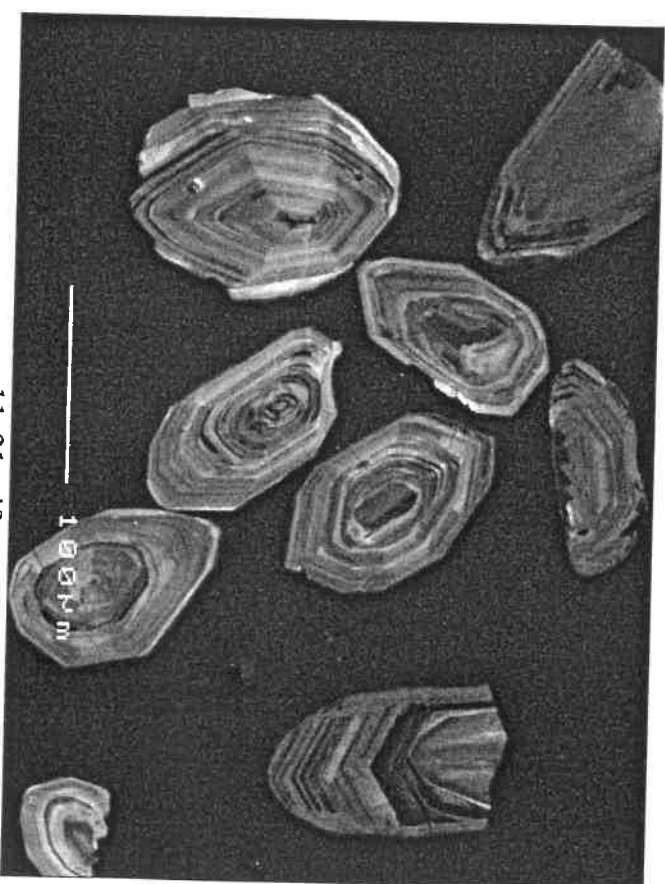
c11c17b.tif



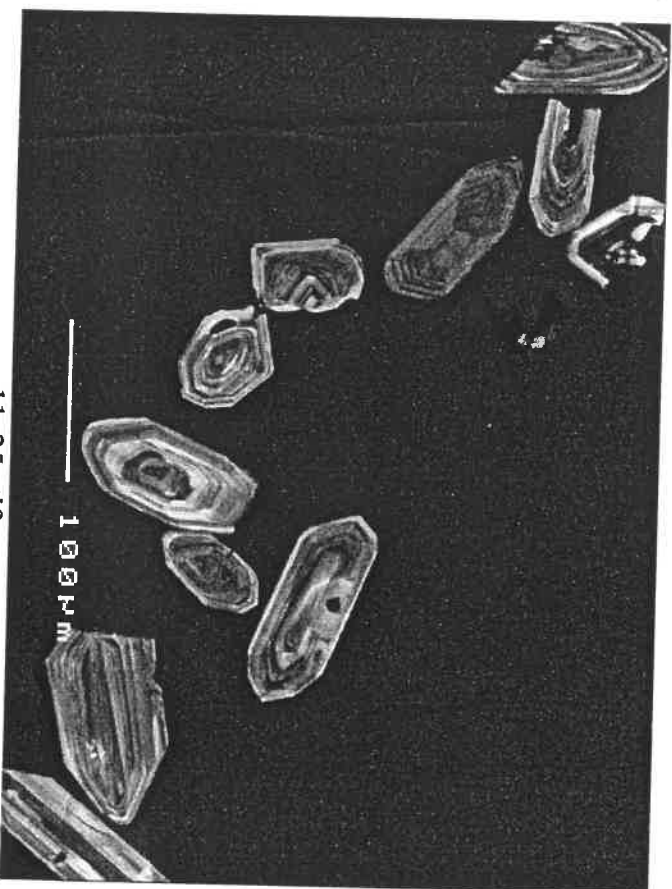
c11c17c.tif



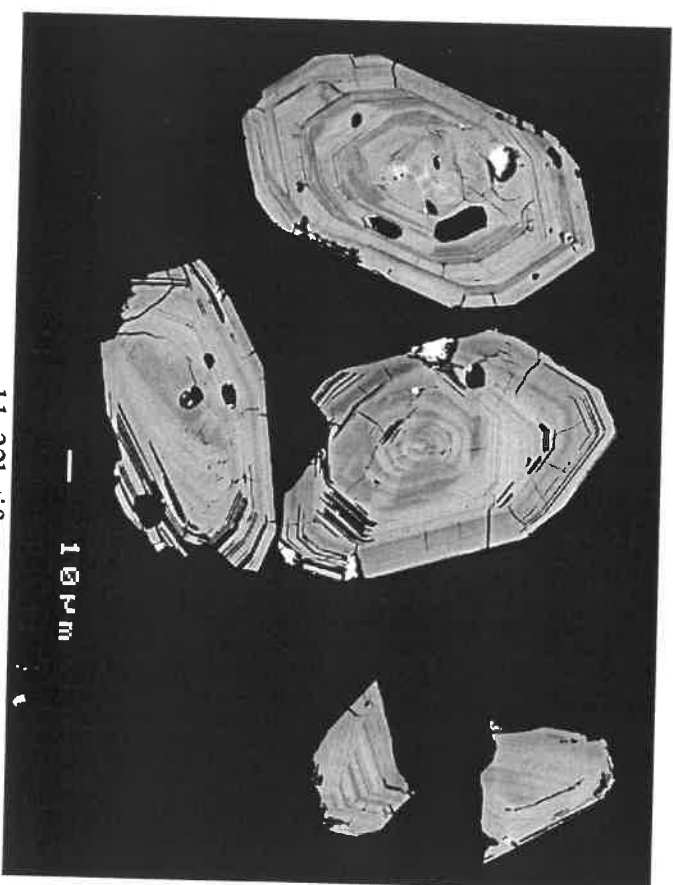
c11c21b.tif



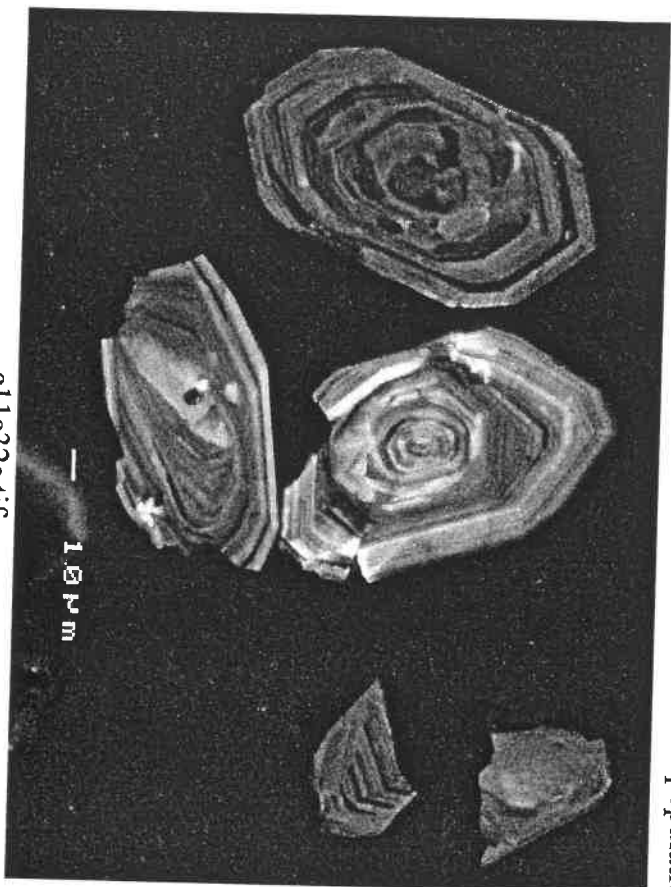
c11c21c.tif



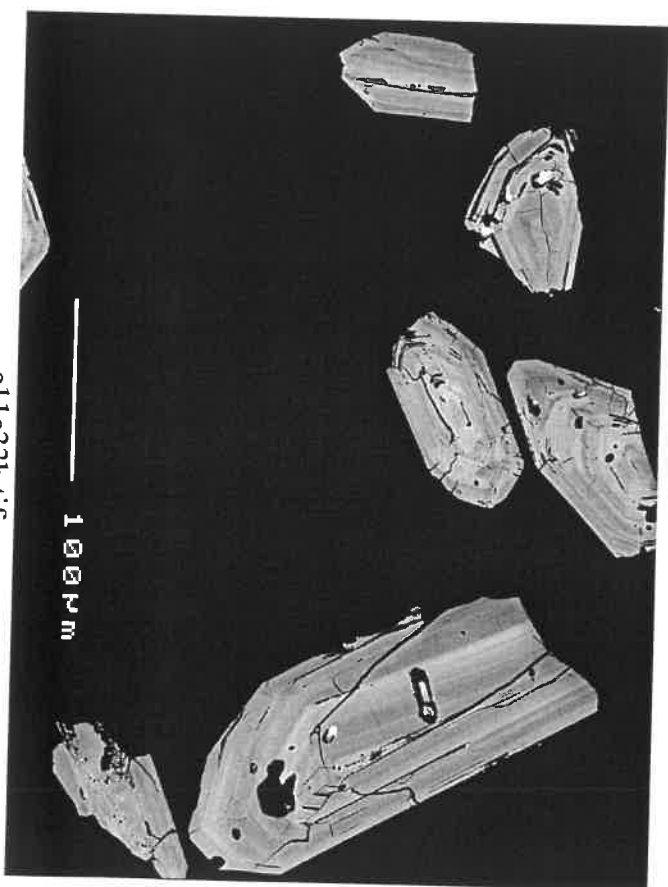
c11c25c.tif



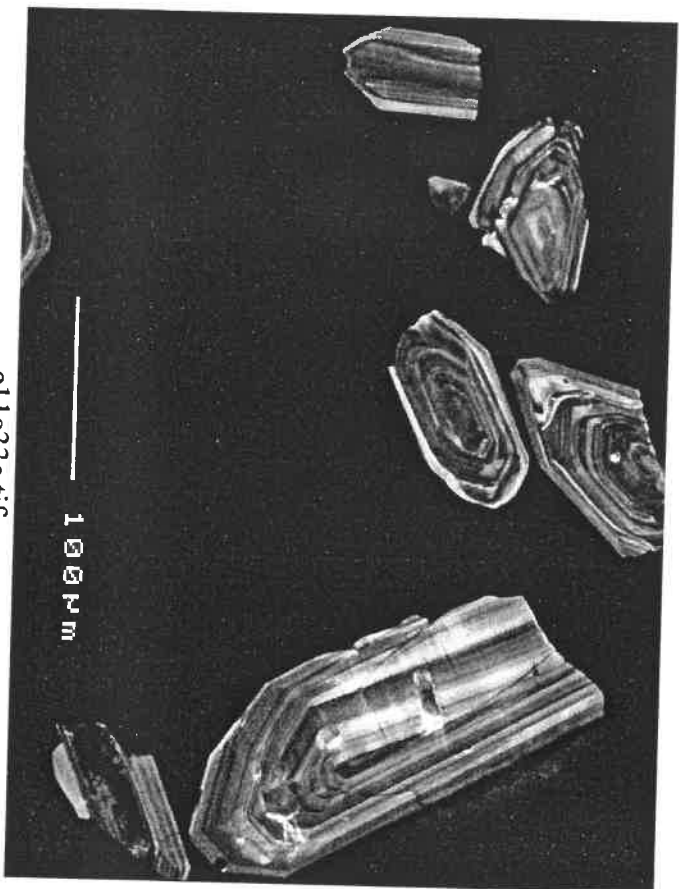
c11c32b.tif



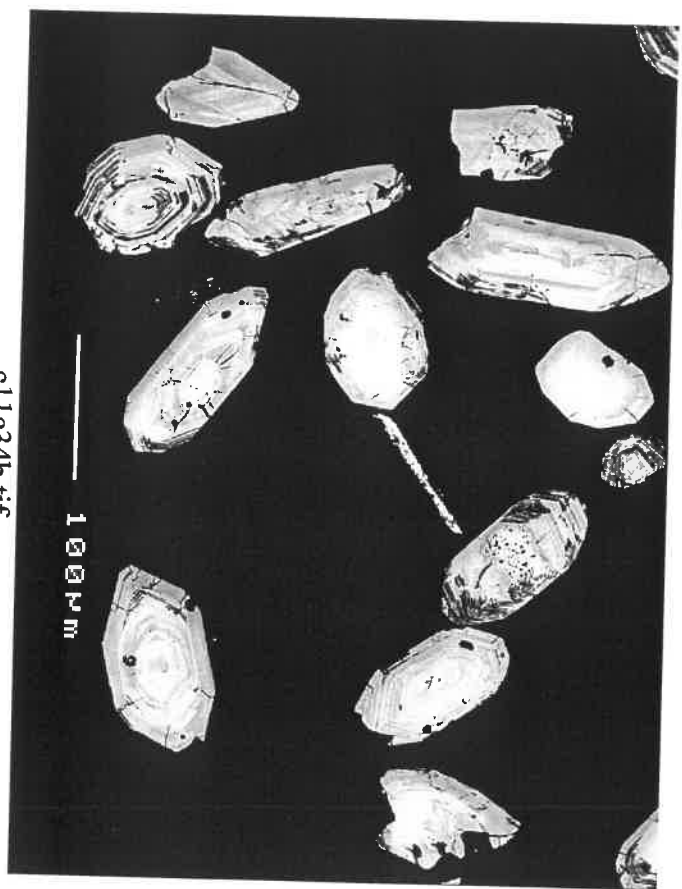
c11c32c.tif



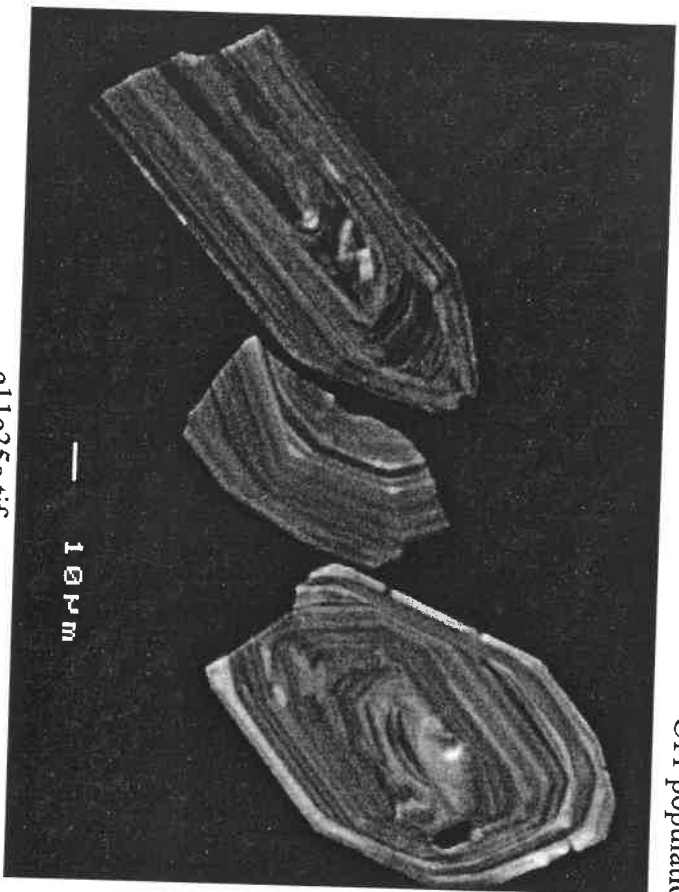
c11c33b.tif



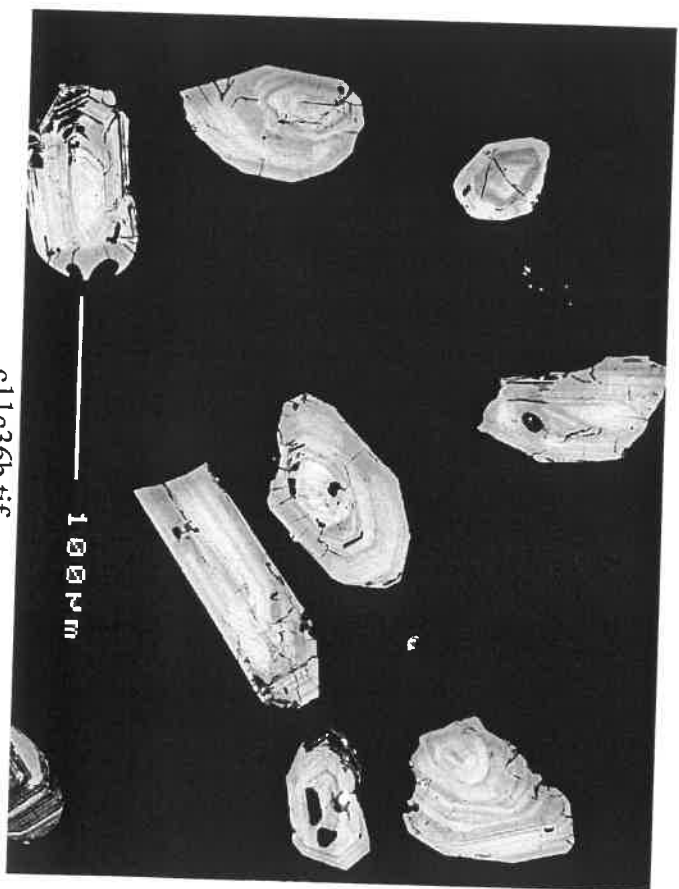
c11c33c.tif



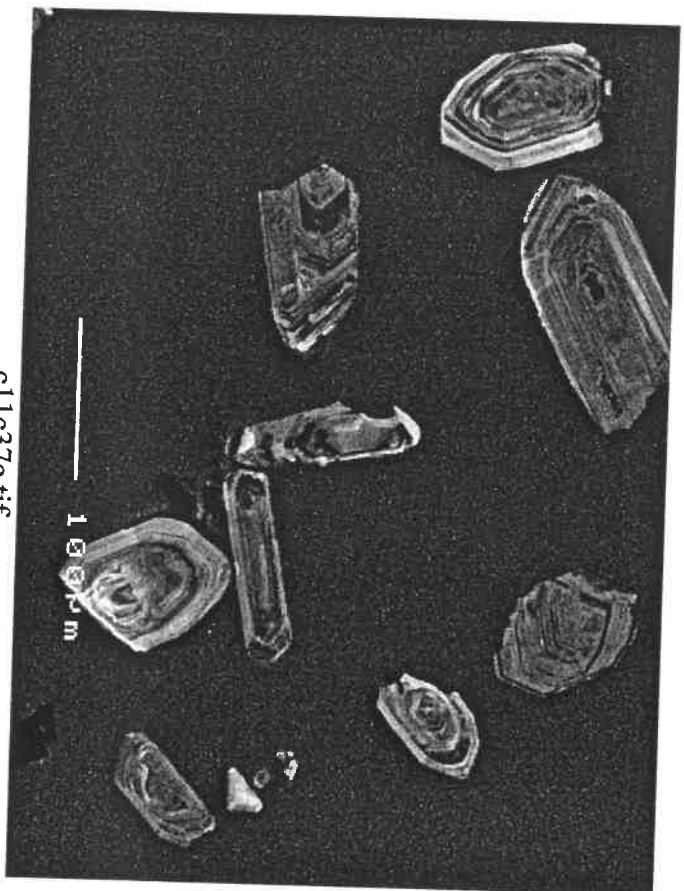
c11c34b.tif



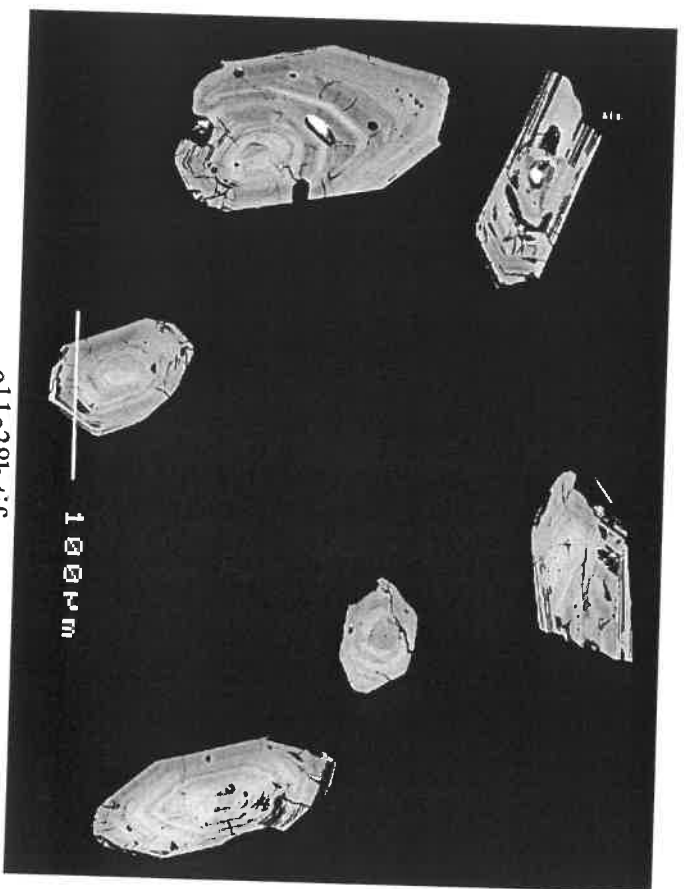
c11c35c.tif



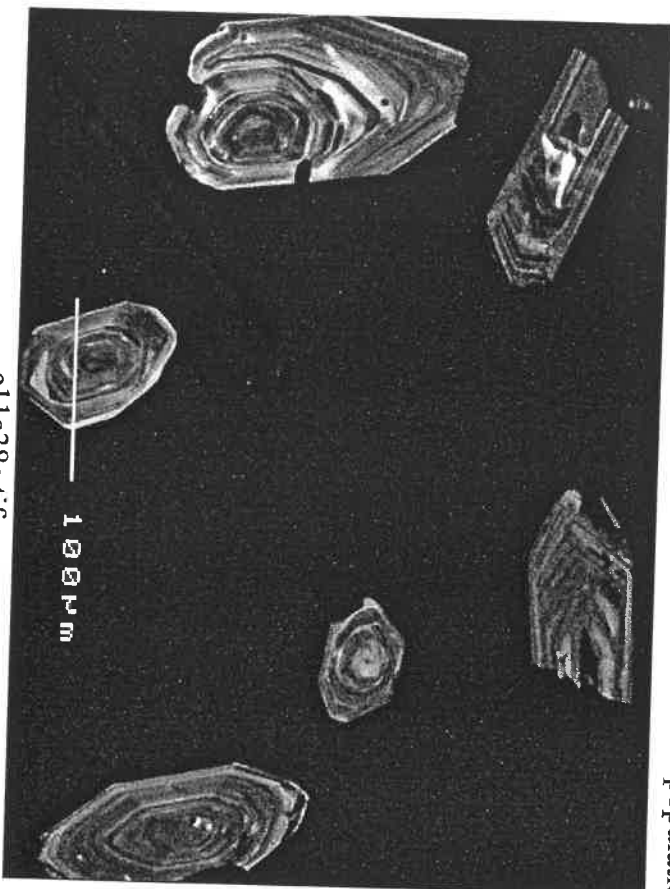
c11c36b.tif



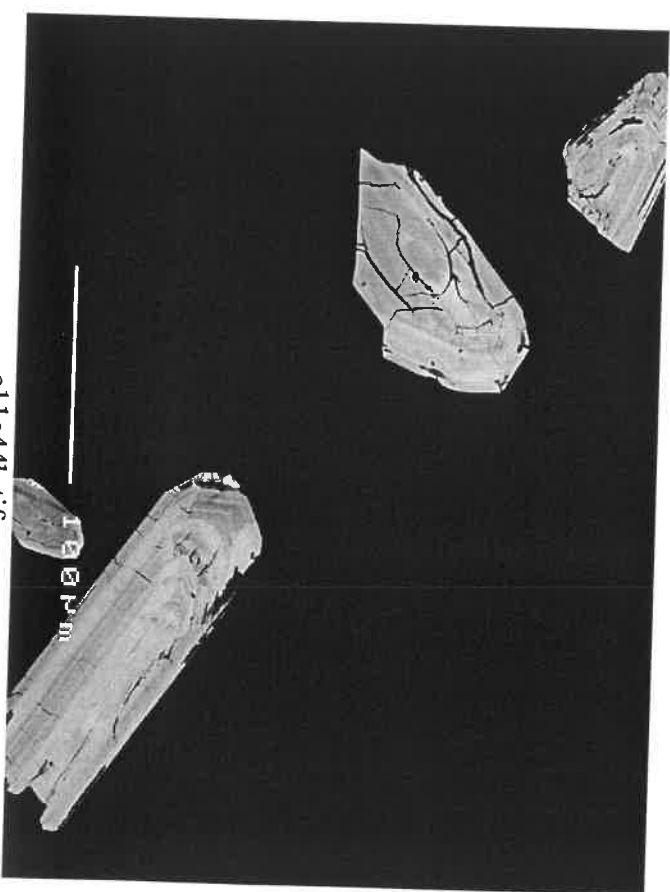
c11c37c.tif



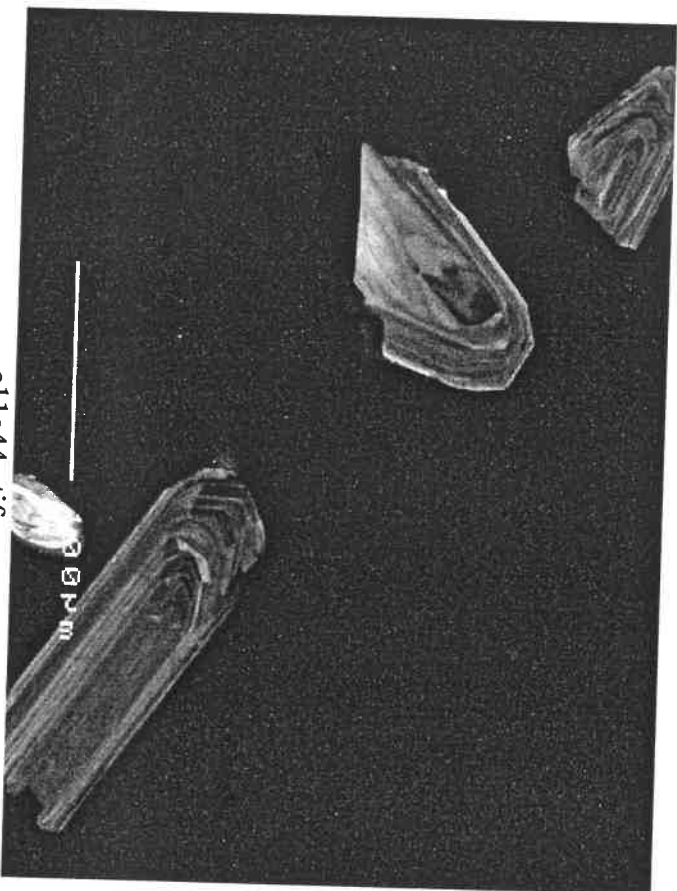
c11c38b.tif



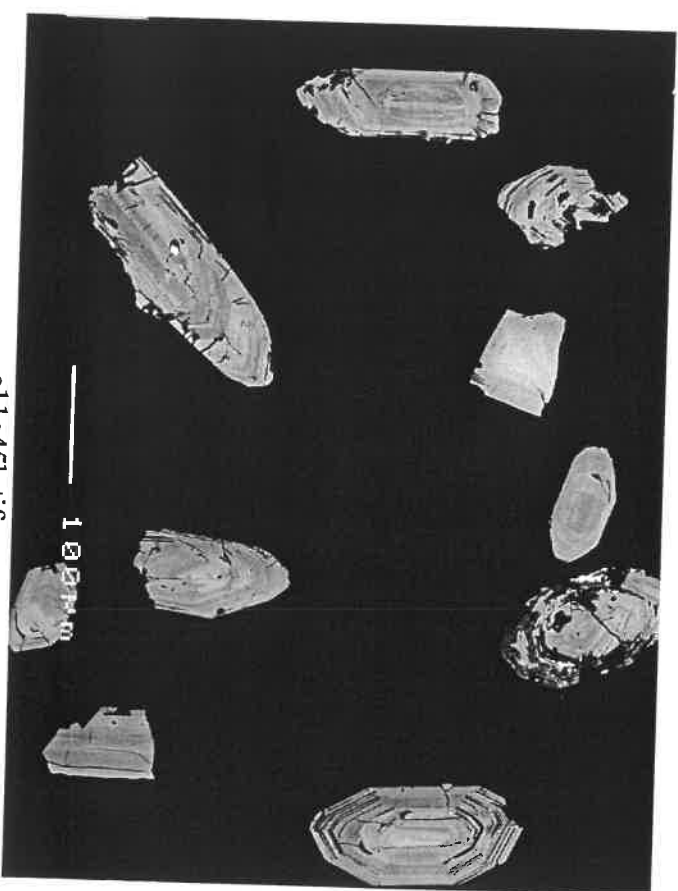
c11c38c.tif



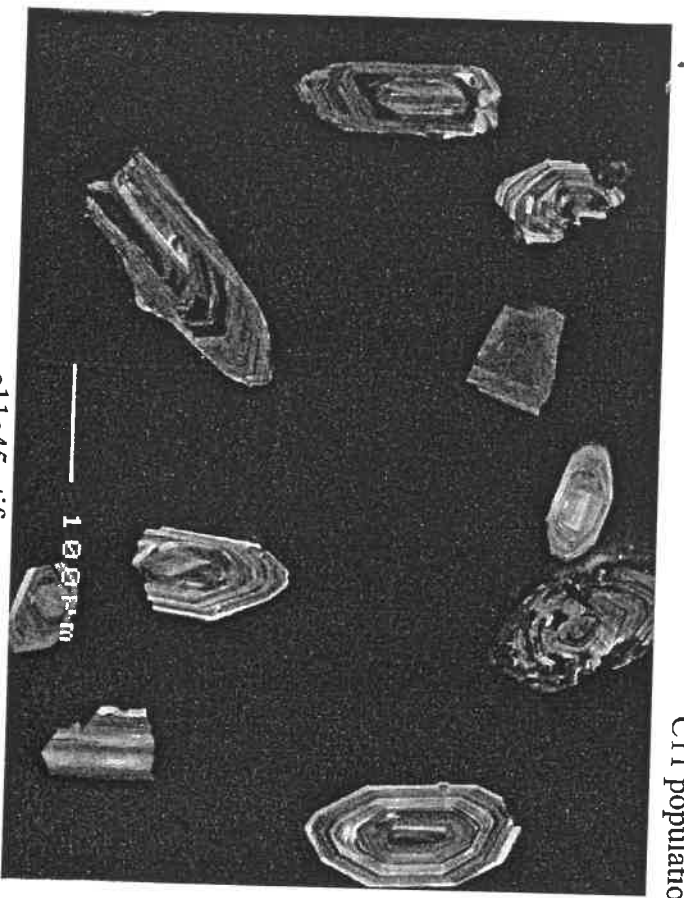
c11c44b.tif



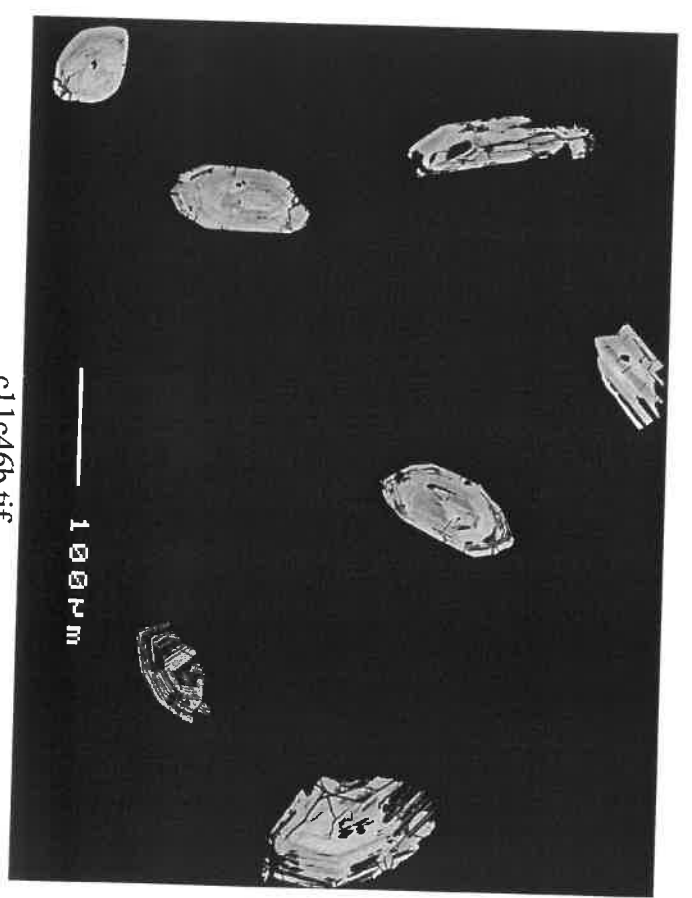
c11c44c.tif



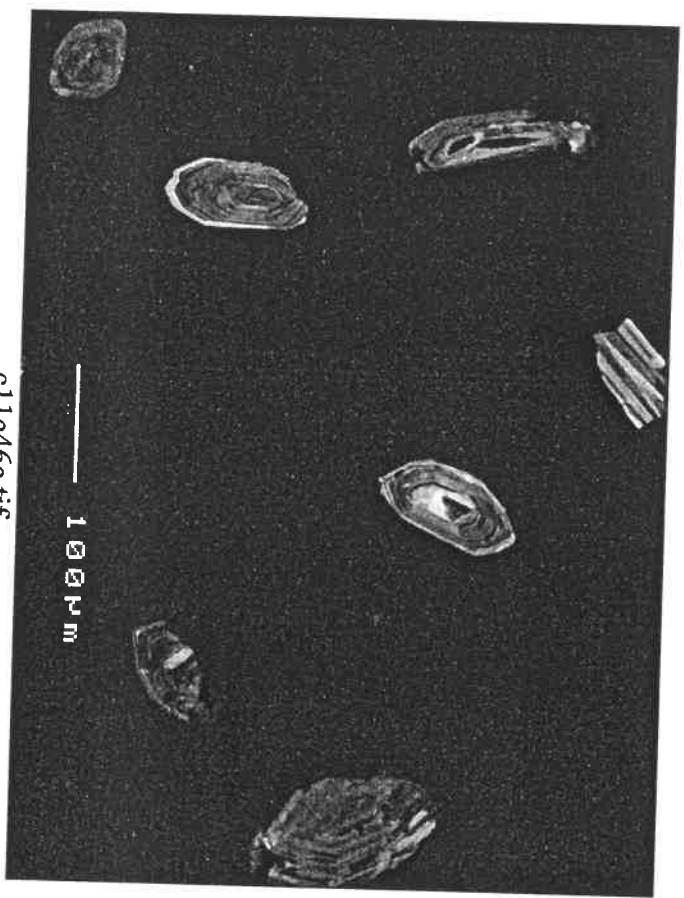
c11c45b.tif



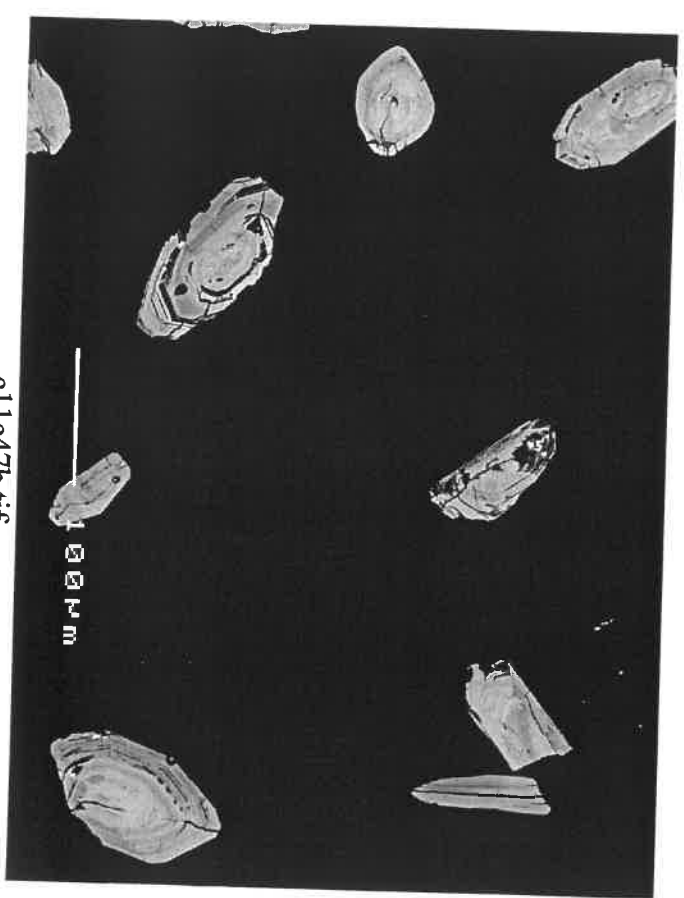
c11c45c.tif



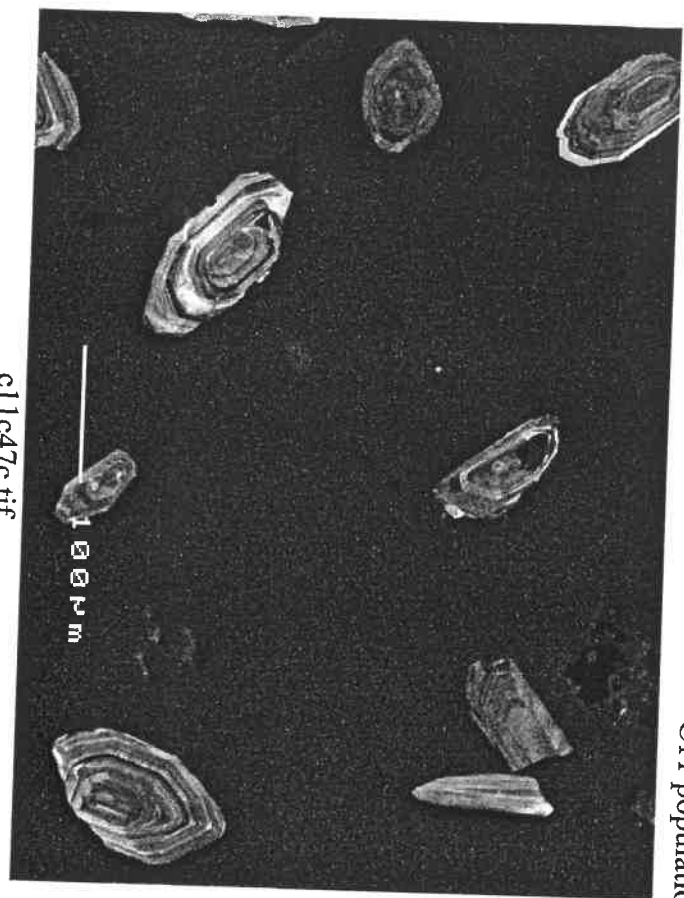
c11c46b.tif



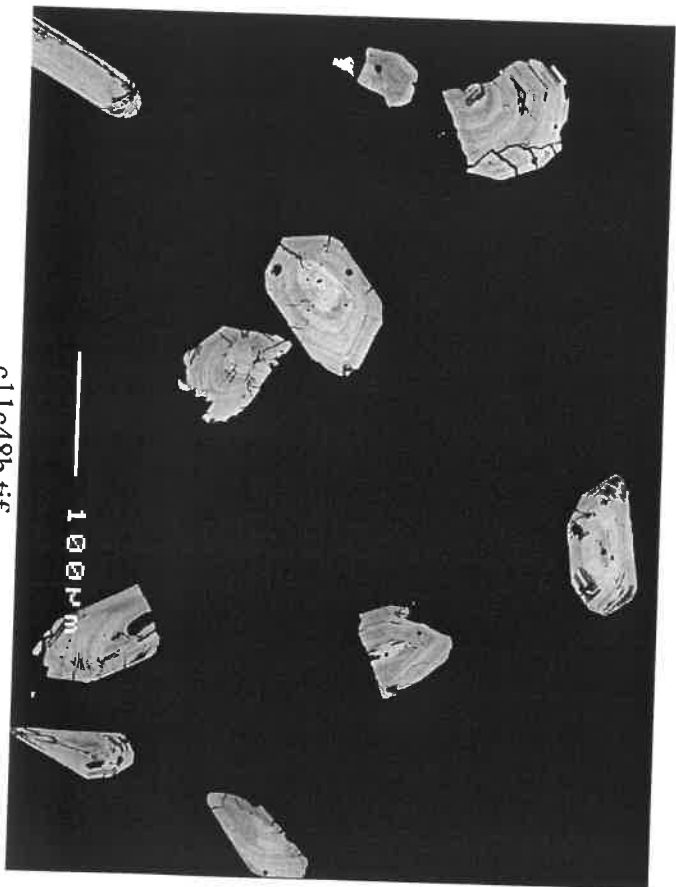
c11c46c.tif



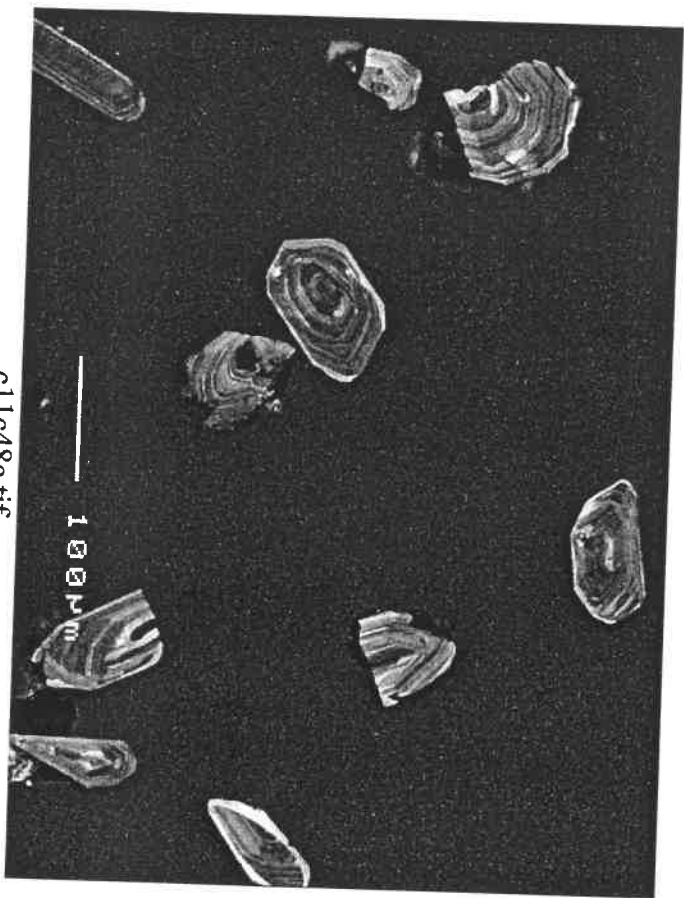
c11c47b.tif



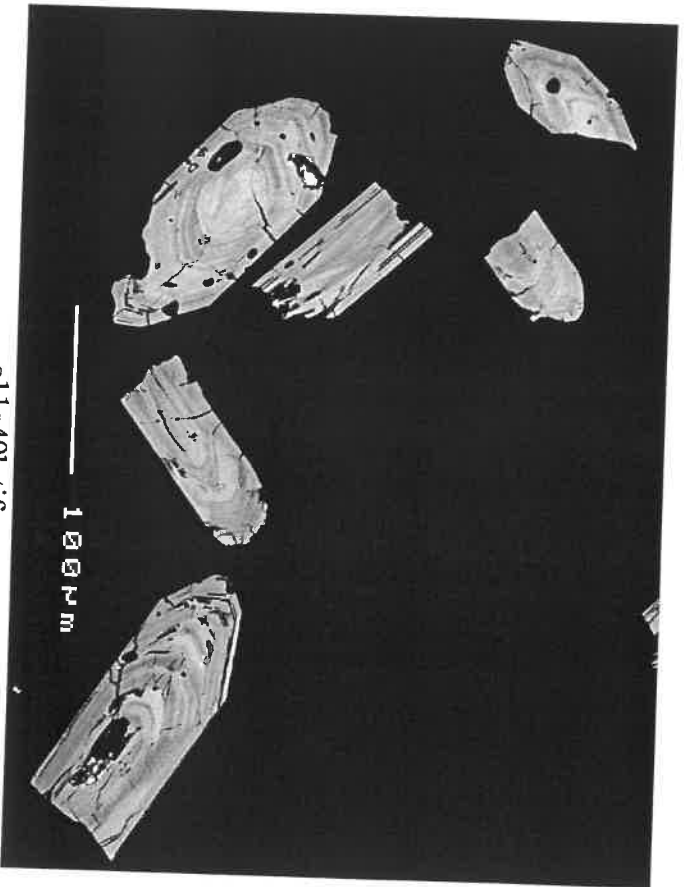
c11c47c.tif



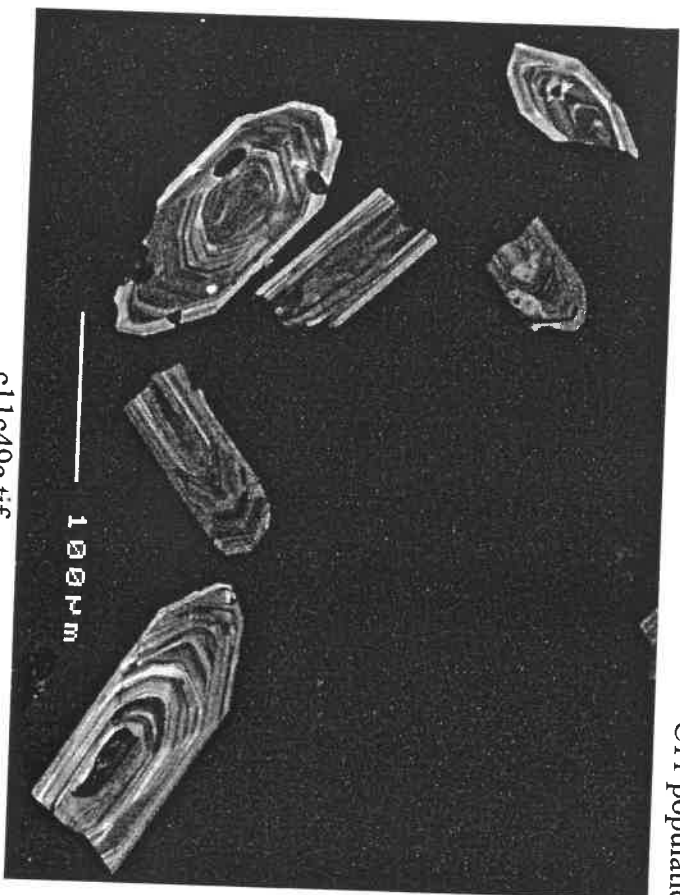
c11c48b.tif



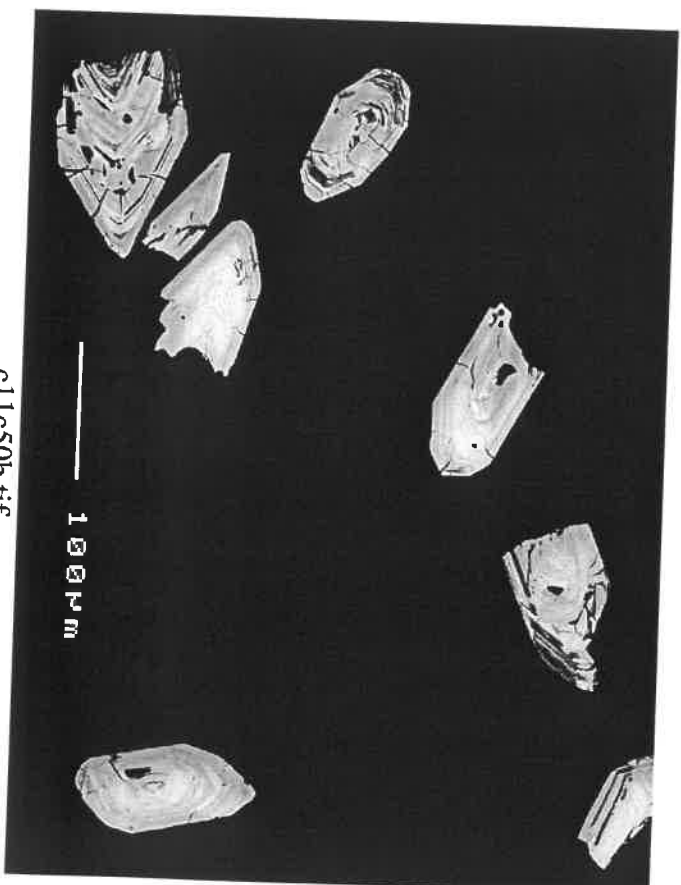
c11c48c.tif



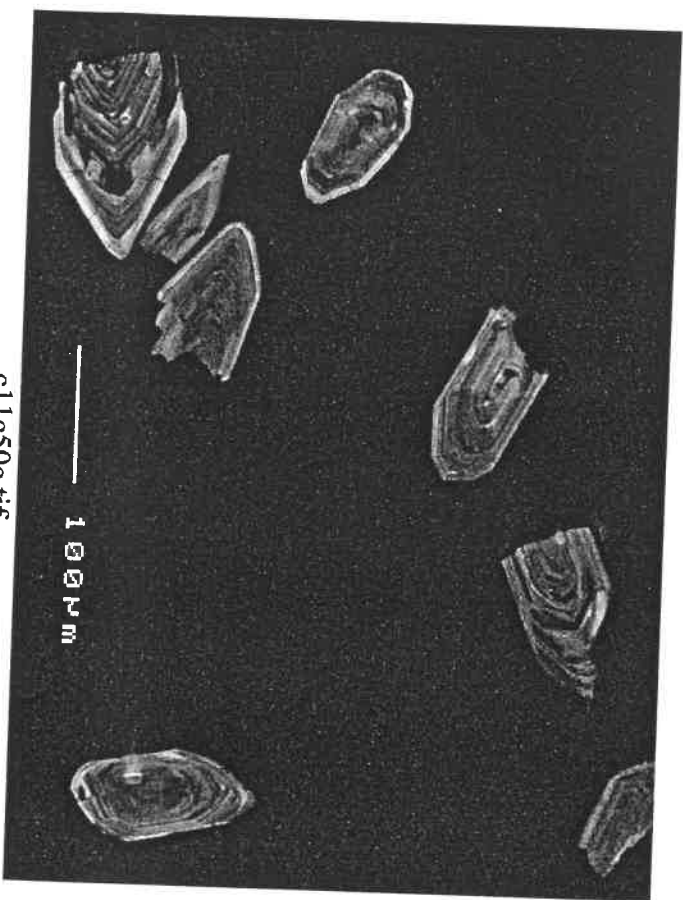
c11c49b.tif



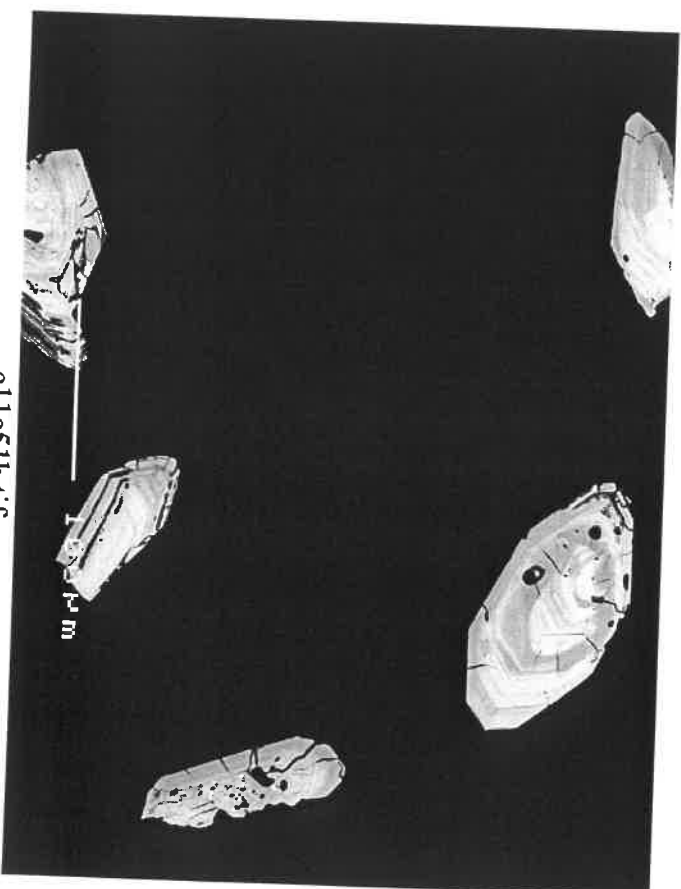
c11c49c.tif



c11c50b.tif



c11c50c.tif



c11c51b.tif

C11 population C: ENGD5/133.6-137.5 AHP₀



c11c53c.tif