

Bse

CI

Pop D
Ph 31

8-1
0-8-2

C 11 33

100µm

100µm

Bse

CI

34-1
Pop D
Pl. 33

34-1

C11 34

10µm

10µm

Bse

CI

Pop D
Pl 34
35-1

35-1

C11 35

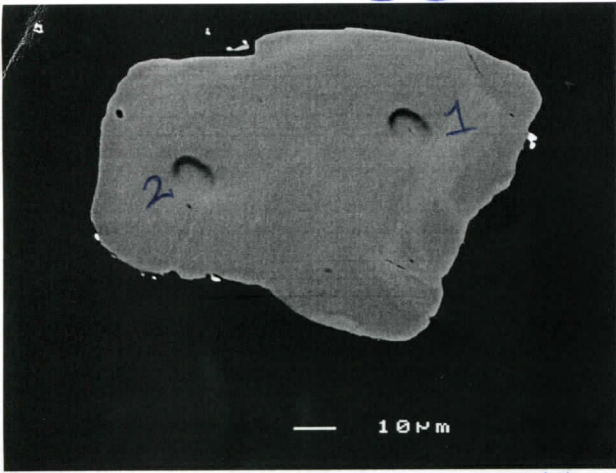
10µm

10µm

2665 ± 10

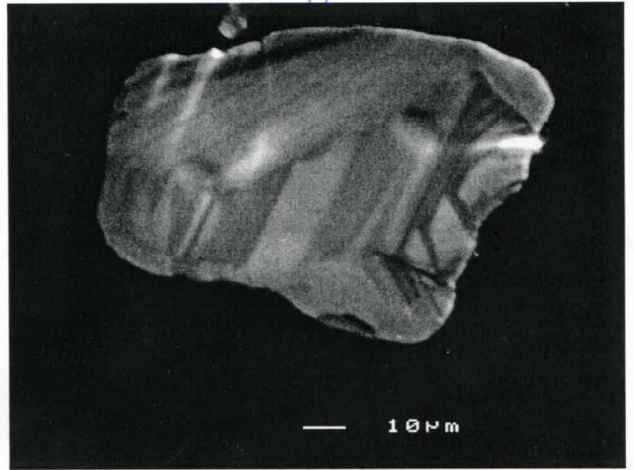
C11-d KND133:153-156

analyzed all xenoliths? ^{see}

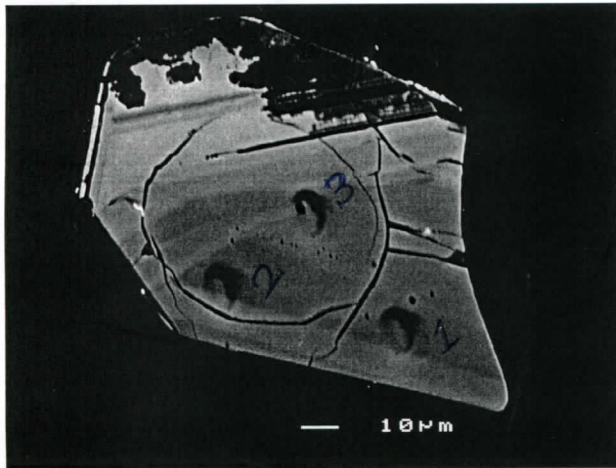


c11d14b.tif

1 = 2602 ± 16 - 1% ^{all}
2 = 2638 ± 18 - 1%

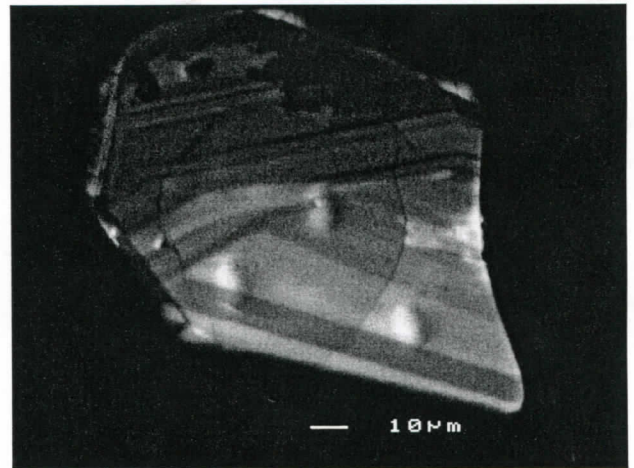


c11d14c.tif

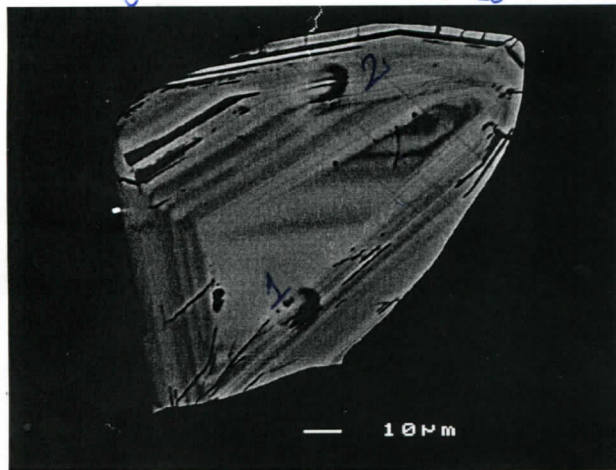


c11d1b.tif

1 = 2726 ± 21 Ma - 2%
2 = 2692 ± 20 Ma - 10%
3 = 2676 ± 19 Ma - 3% *

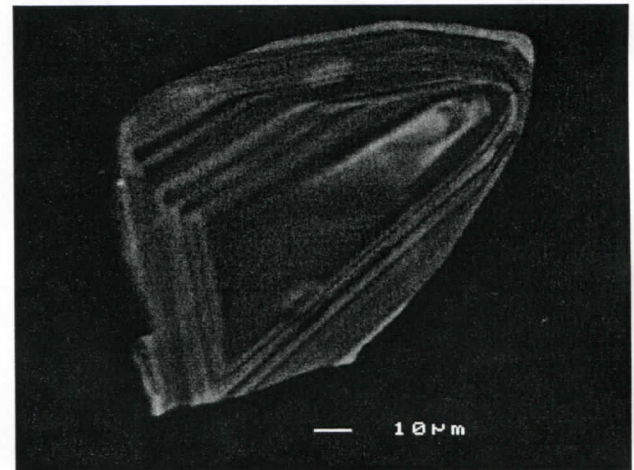


c11d1c.tif

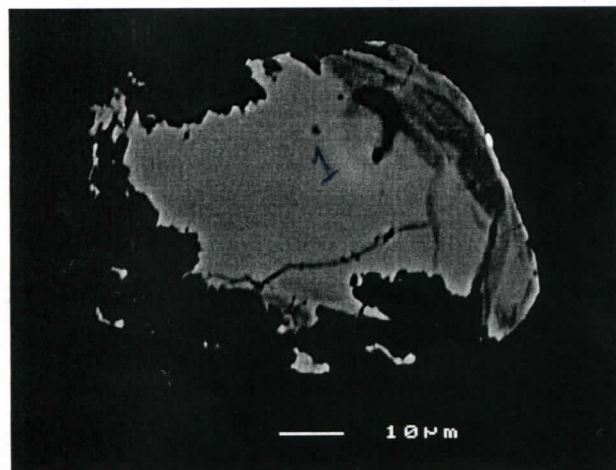


c11d2b.tif

R 1 = 2685 ± 8 Ma - 0% 1
R 2 = 2696 ± 8 Ma - 1% 1

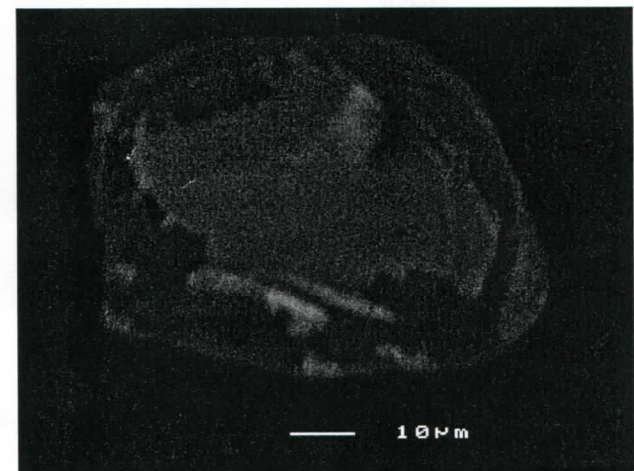


c11d2c.tif



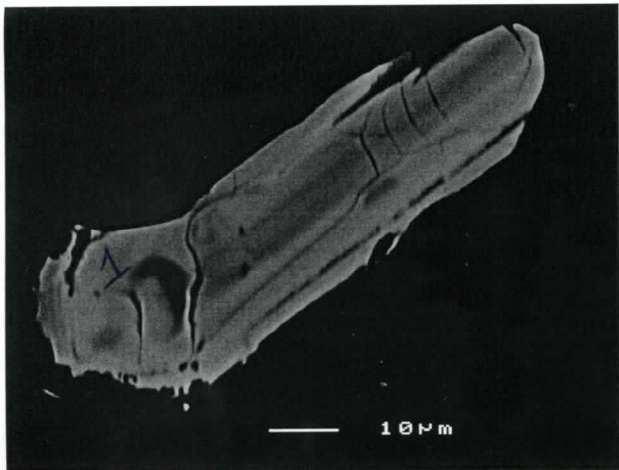
c11d3b.tif

R 2536 ± 7 Ma - 6%



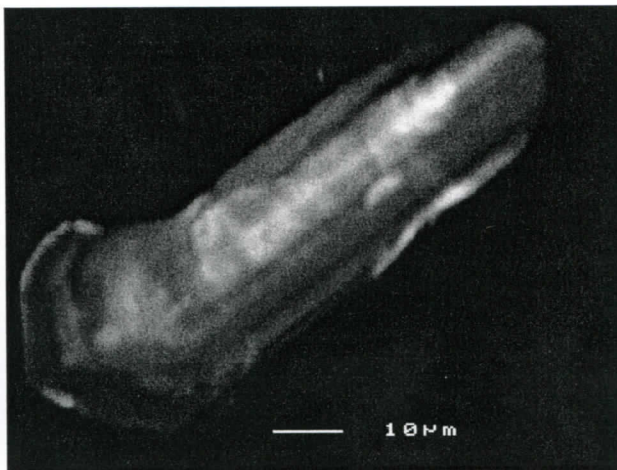
c11d3c.tif

pencil circles not analyzed only 1st round a stamp.

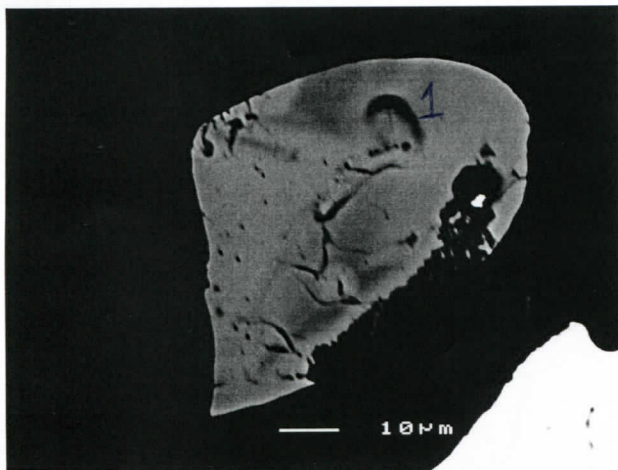


c11d4b.tif 2682 ± 19 ma 0%

C



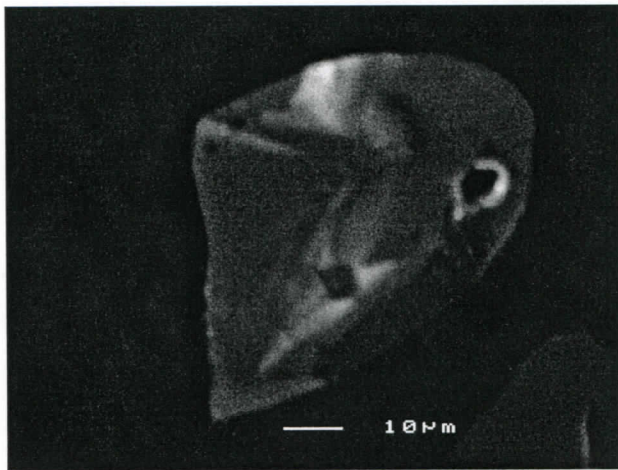
c11d4c.tif



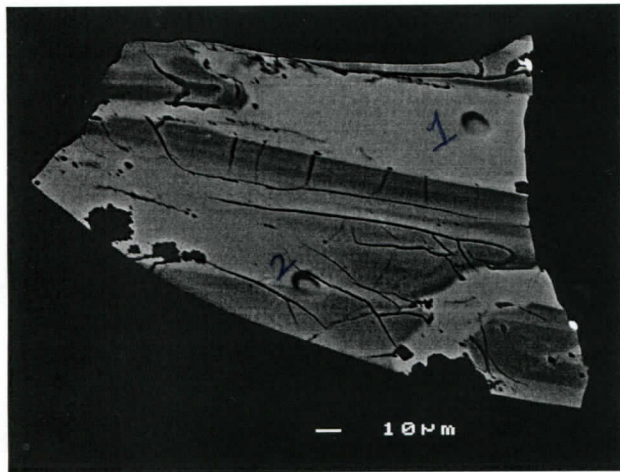
c11d5b.tif 2769 ± 13 ma -2%

X

C



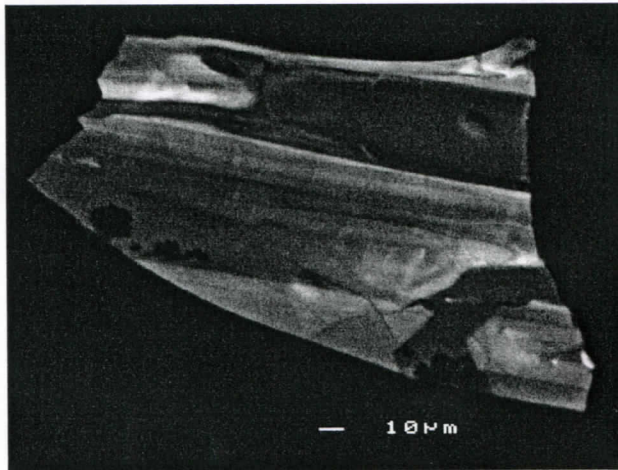
c11d5c.tif



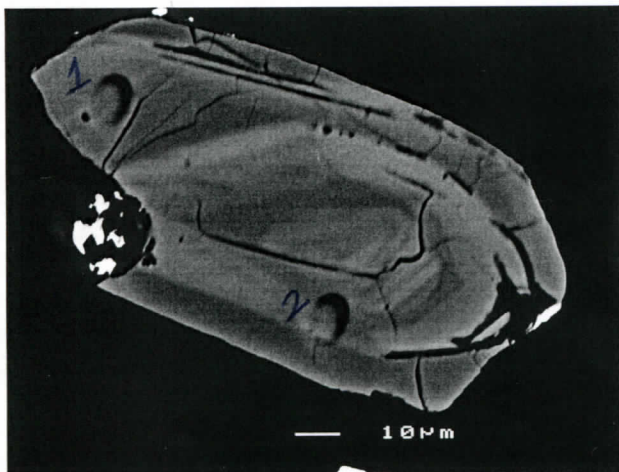
c11d6b.tif 1 = 2784 ± 6 ma -1%
2 = 2776 ± 12 ma -17%

X

C

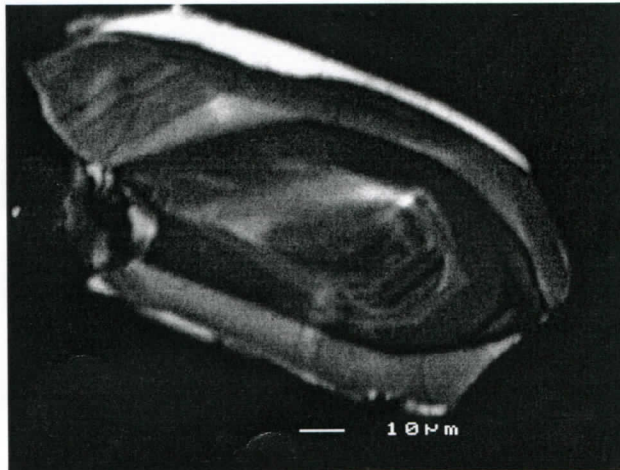


c11d6c.tif

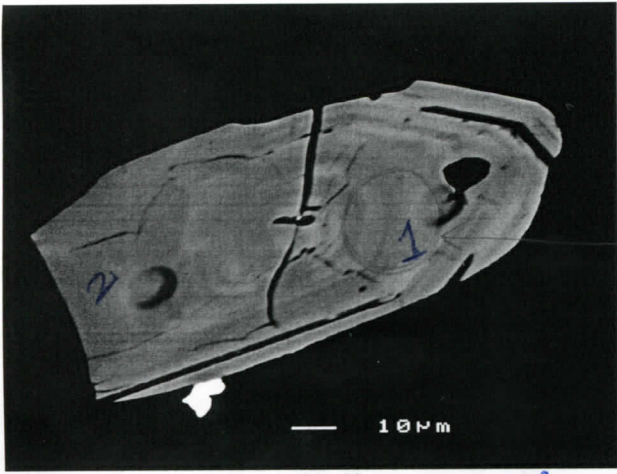


c11d7b.tif 1 = 2685 ± 17 ma -0% 2
2 = 2666 ± 16 ma -17%

\

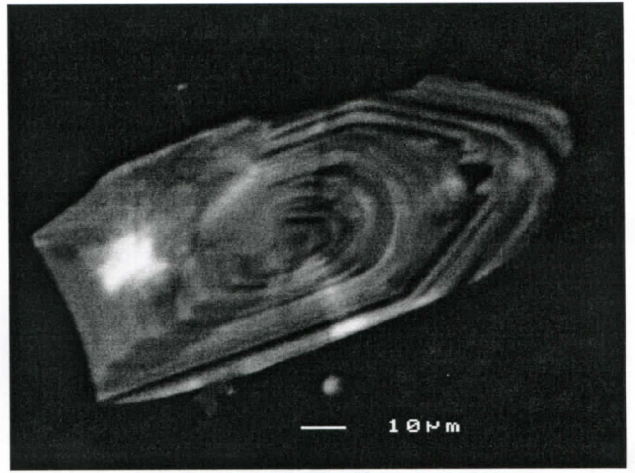


c11d7c.tif

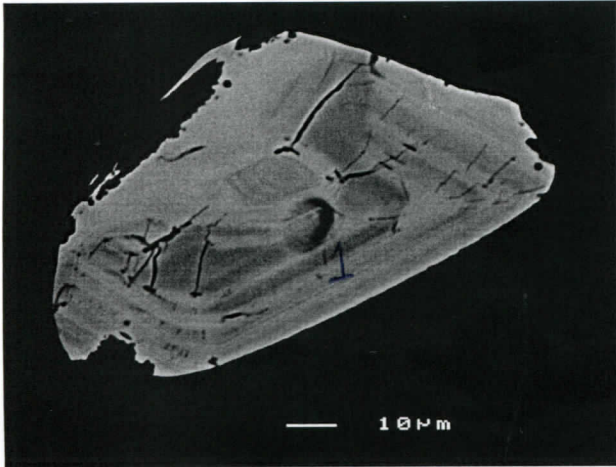


8-3

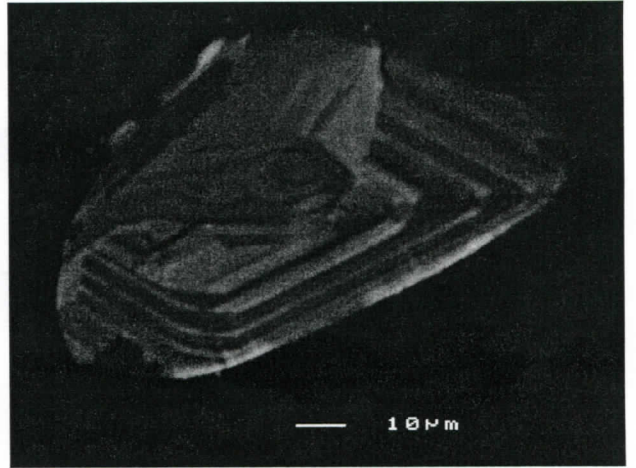
c11d8b.tif 1 $2667 \pm 13 \text{ Ma} - 3\% \checkmark$
 alt → 2 $2655 \pm 19 \text{ Ma} - 0$



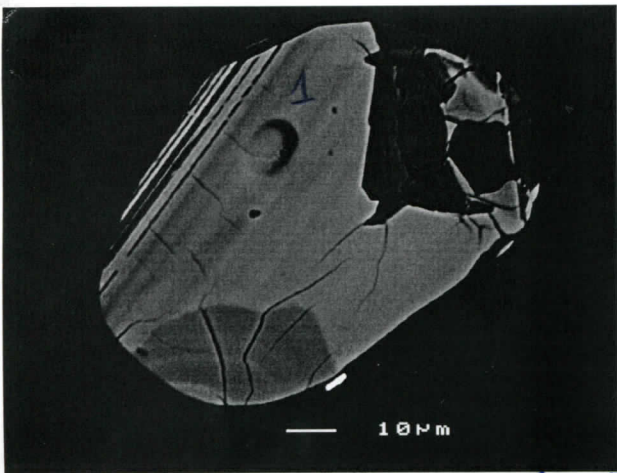
c11d8c.tif



c11d9b.tif $2692 \pm 11 \text{ Ma} - 3\% \checkmark$



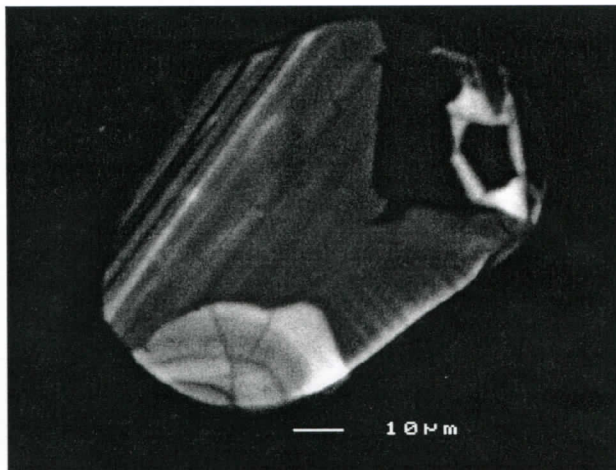
c11d9c.tif



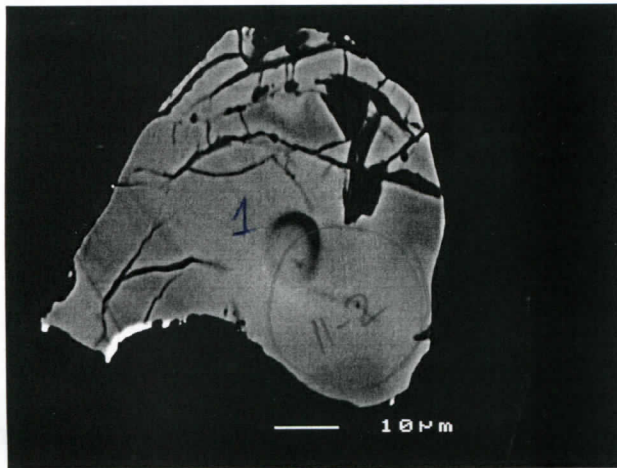
c11d10b.tif

2658 ± 15 Ma - 2%

N



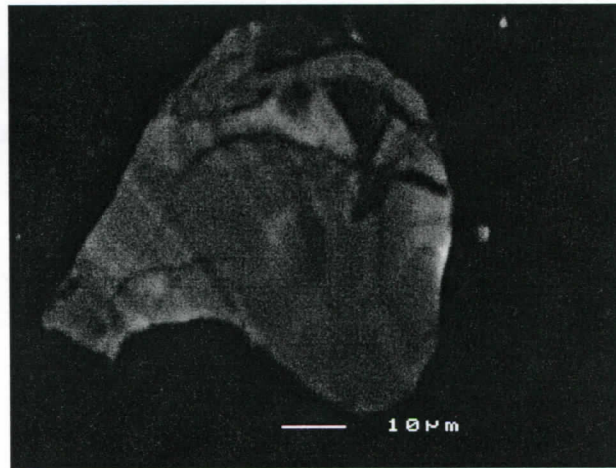
c11d10c.tif



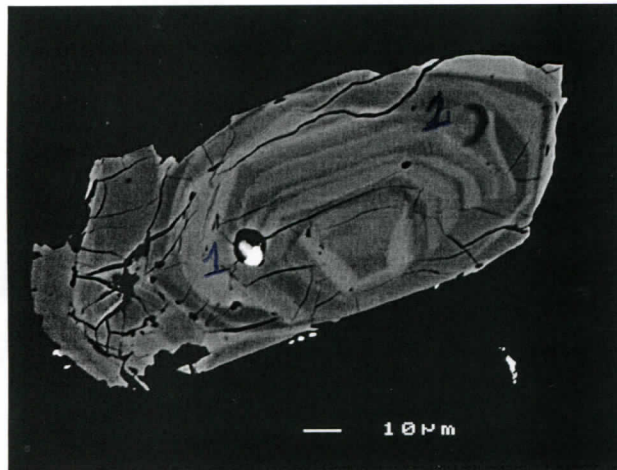
c11d11b.tif

2665 ± 7 Ma - 0%

E



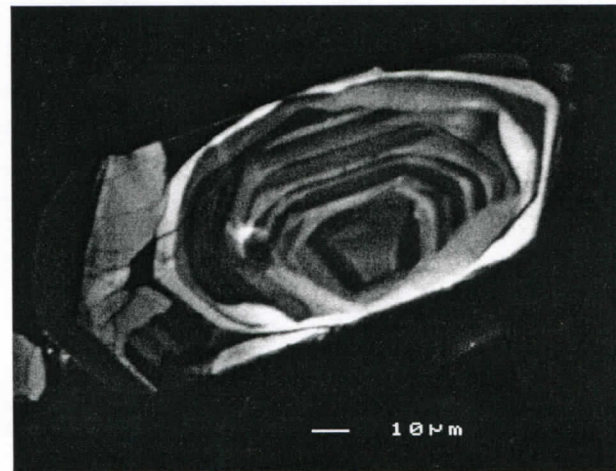
c11d11c.tif



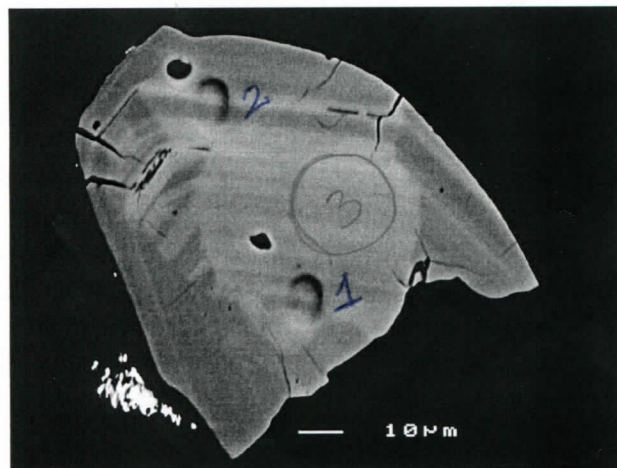
c11d12b.tif

1 = 2492 ± 96 Ma - 50%
2 = 2716 ± 16 Ma - 2%

U



c11d12c.tif

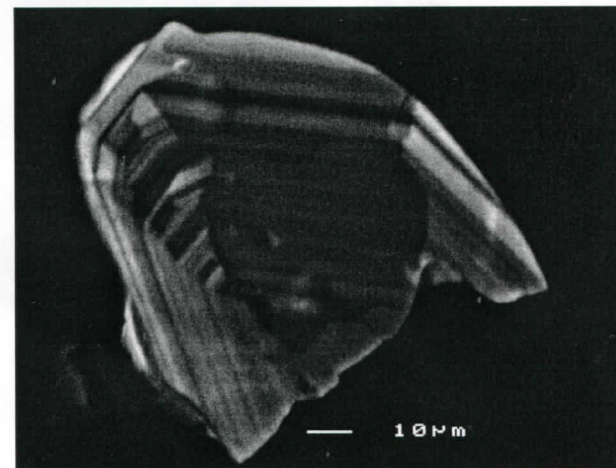


c11d13b.tif

1 = 2643 ± 11 Ma - 1%
2 = 2650 ± 13 Ma - 0%

*

N



c11d13c.tif