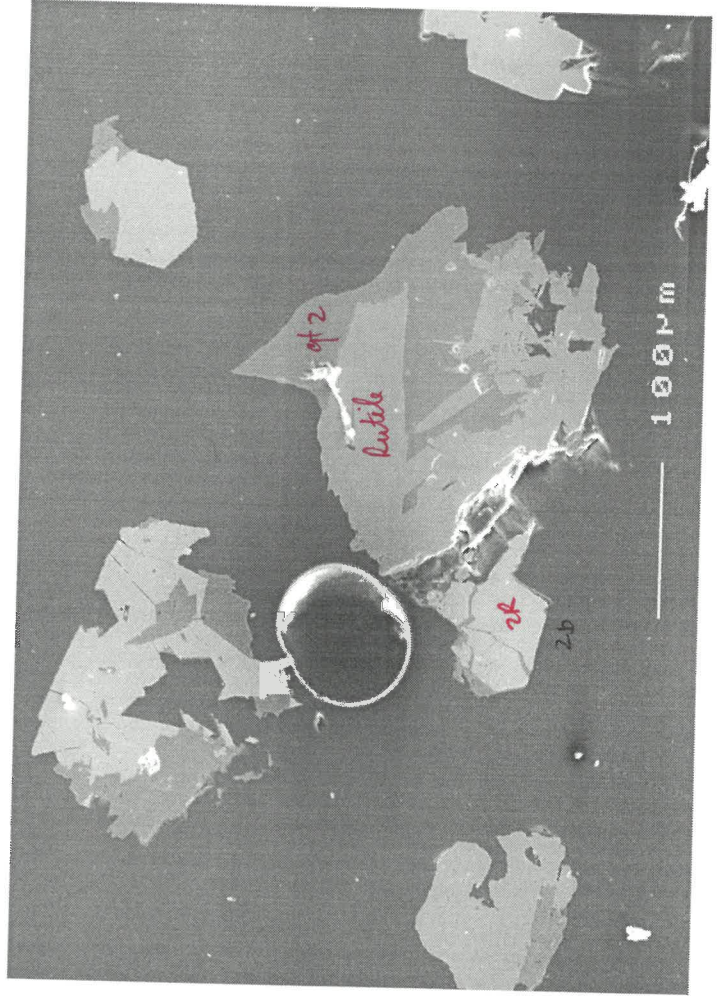
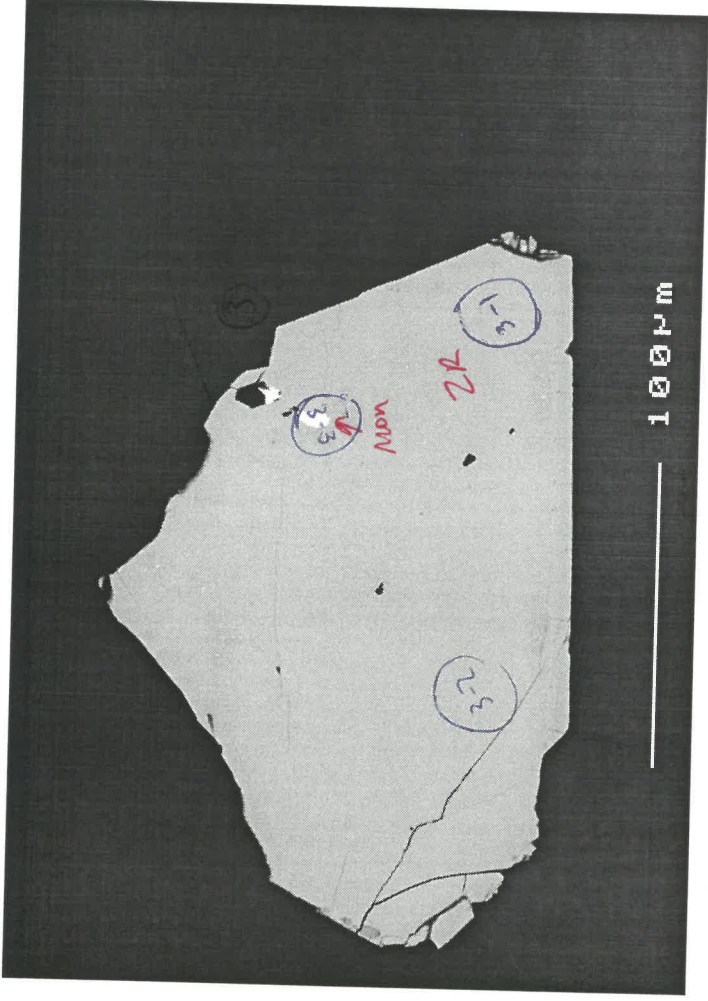
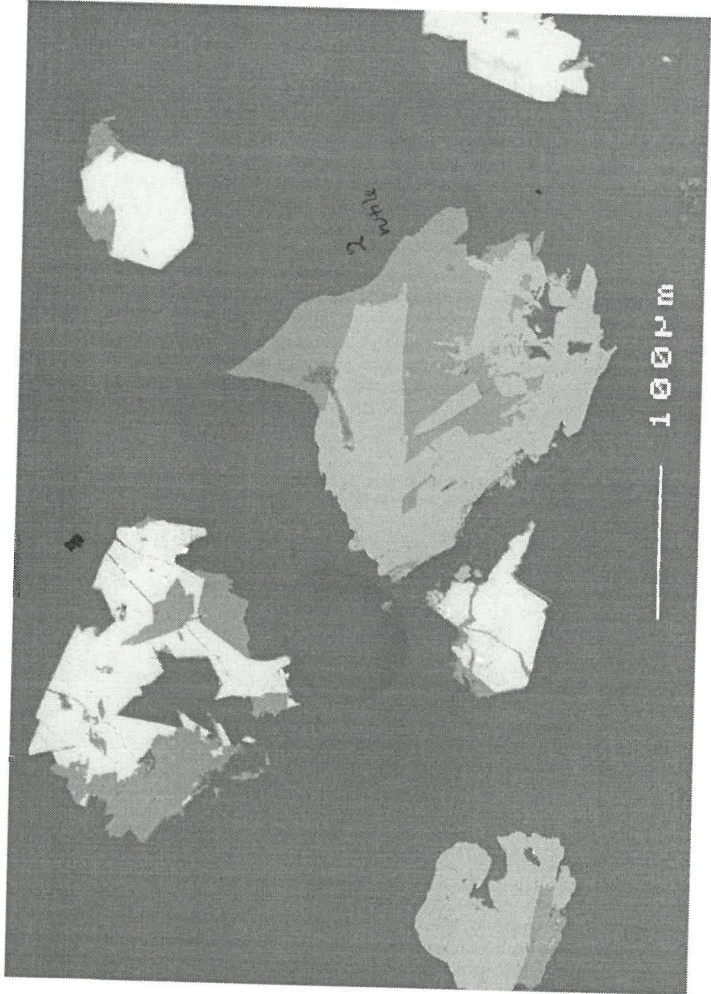


C69 - 23/9/02

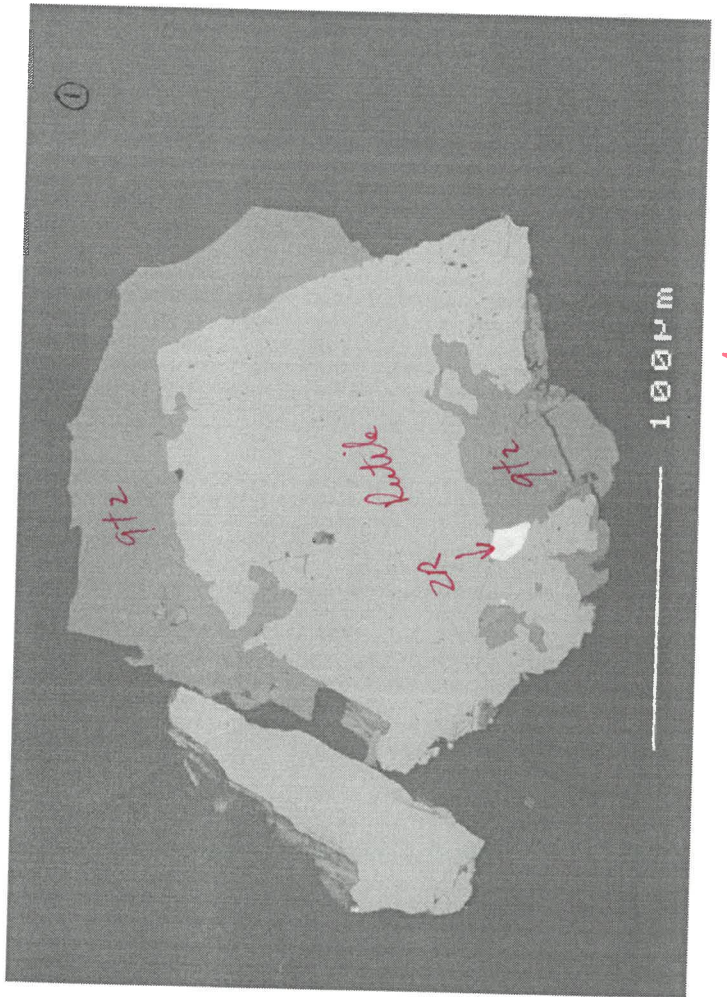
036



025



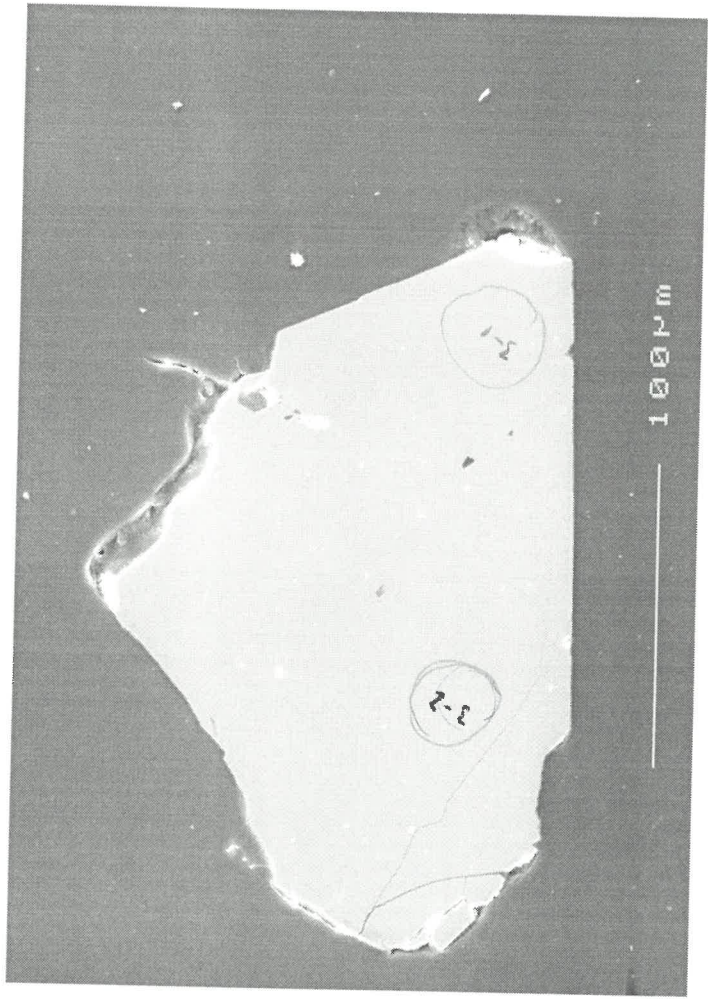
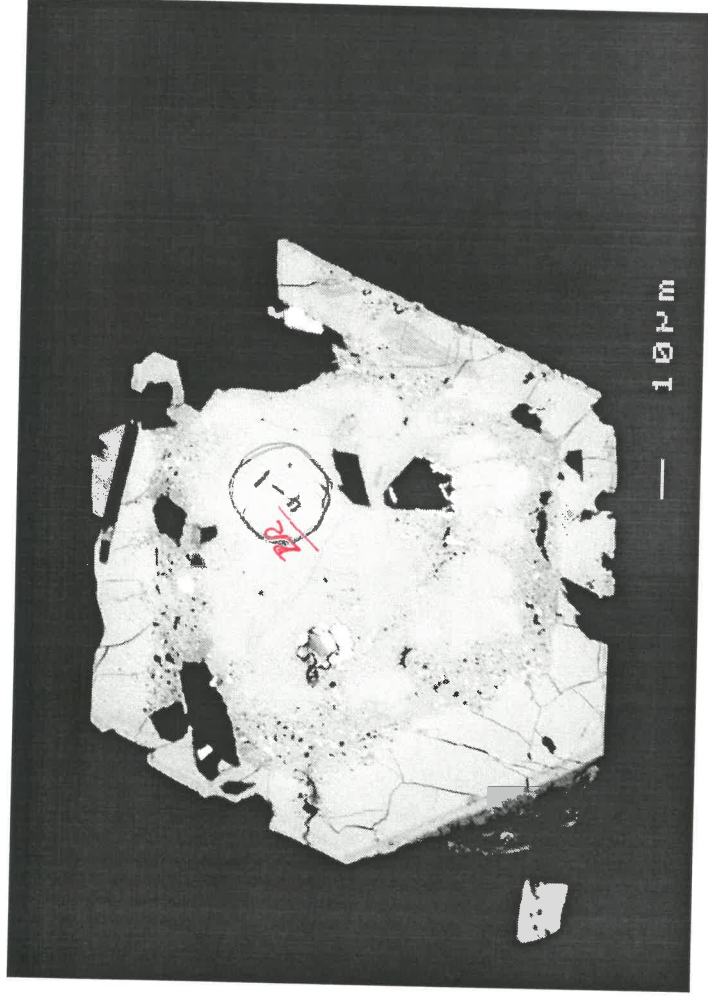
020



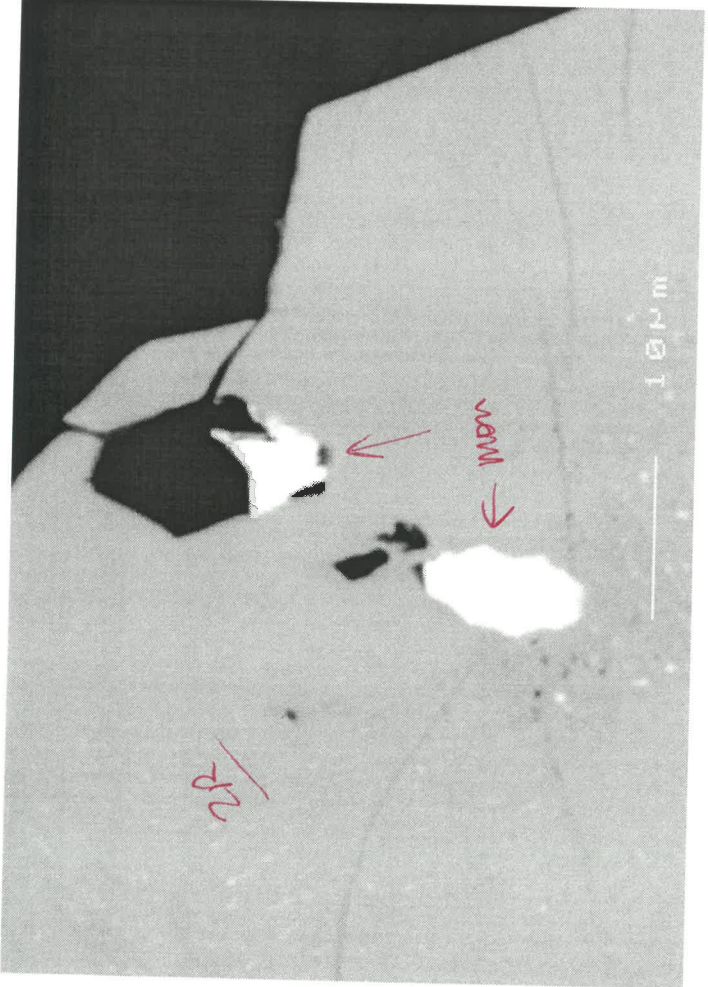
016

c69 23/9/02

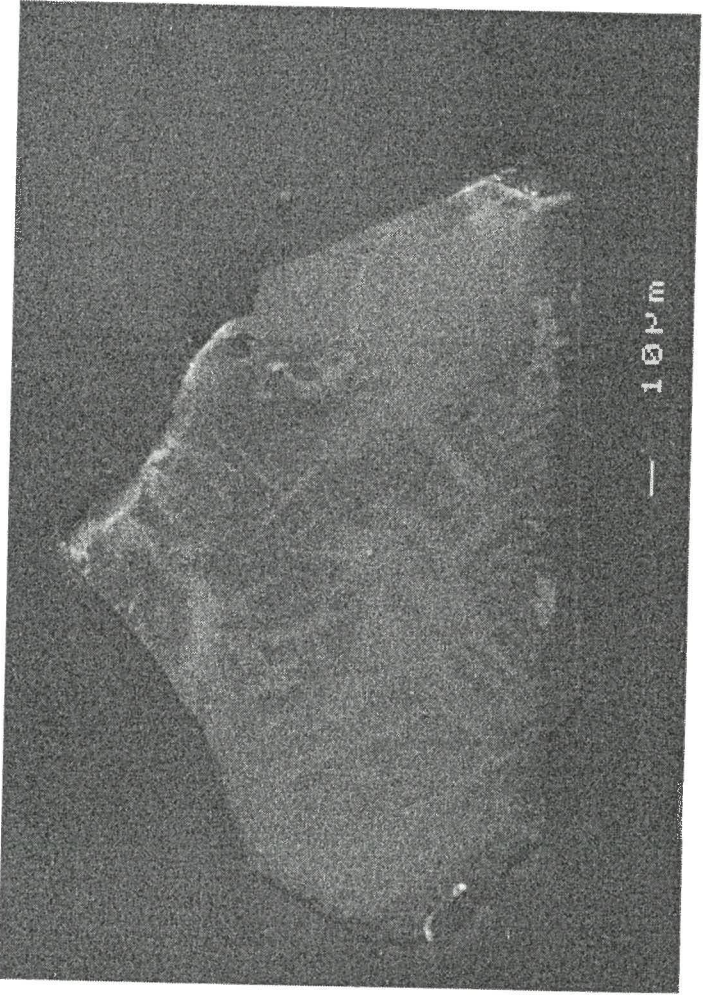
046



035

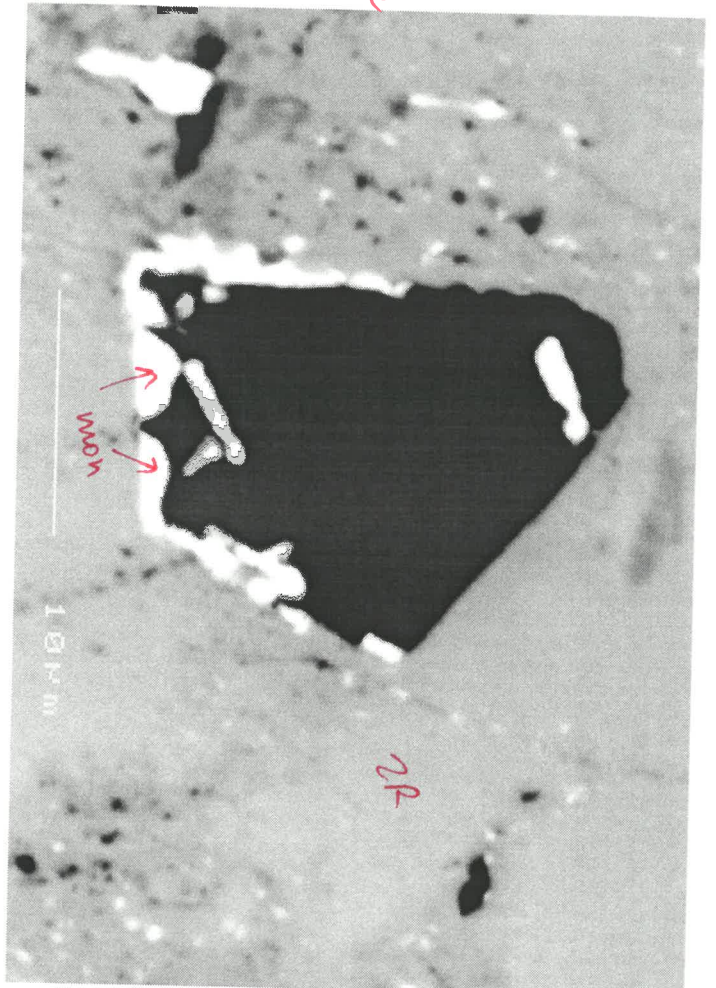


034b



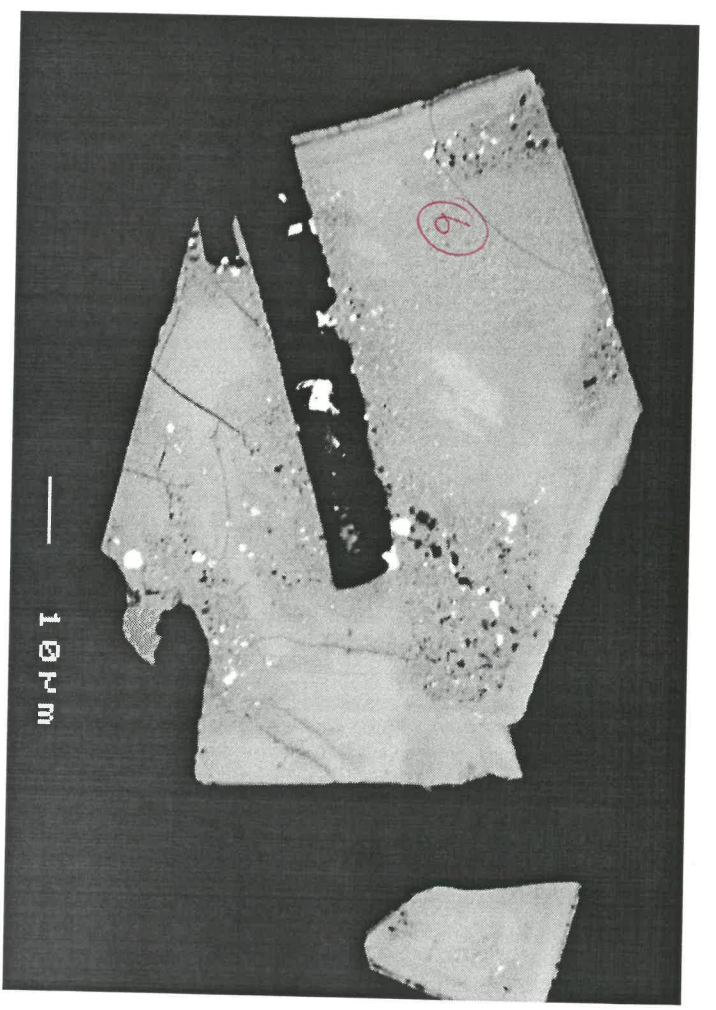
03c

046a2

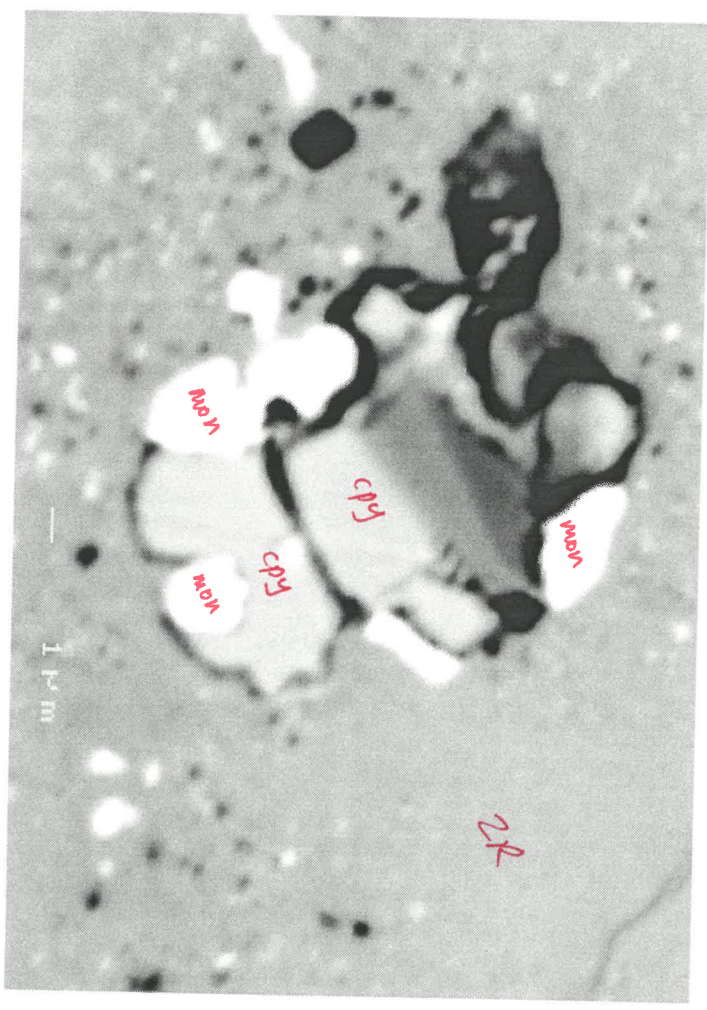


C69 23/9/02

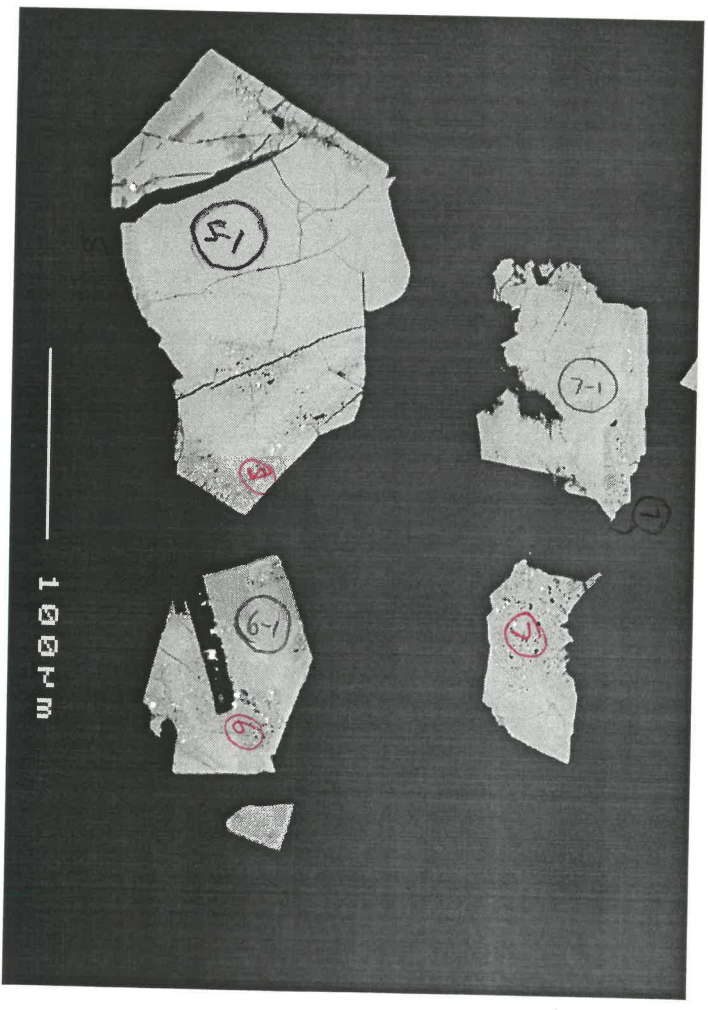
056a

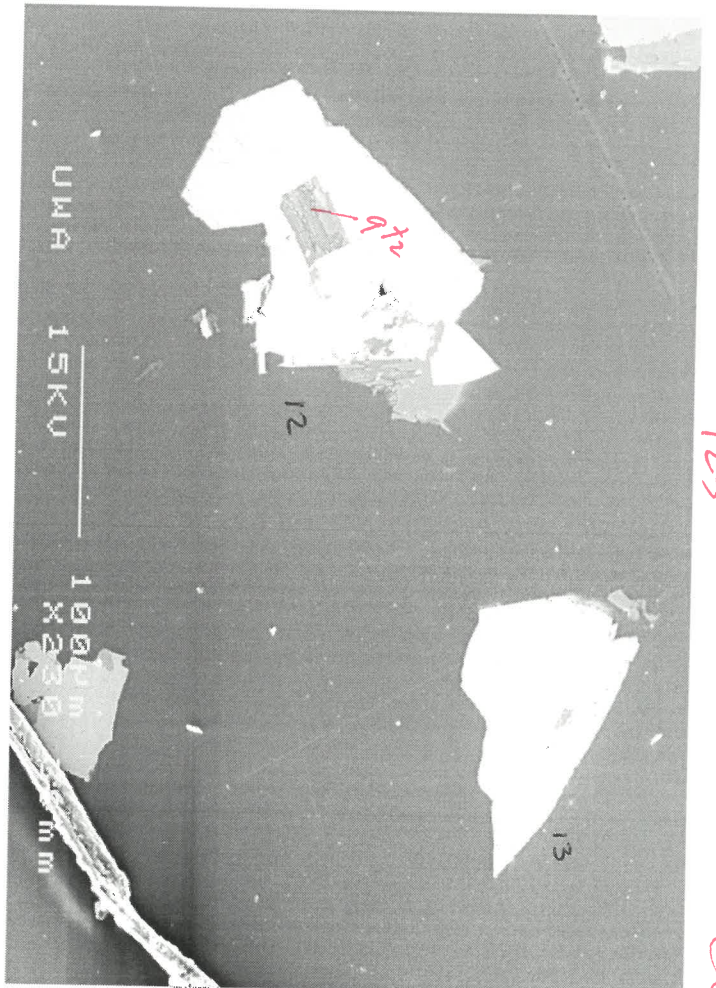


046a



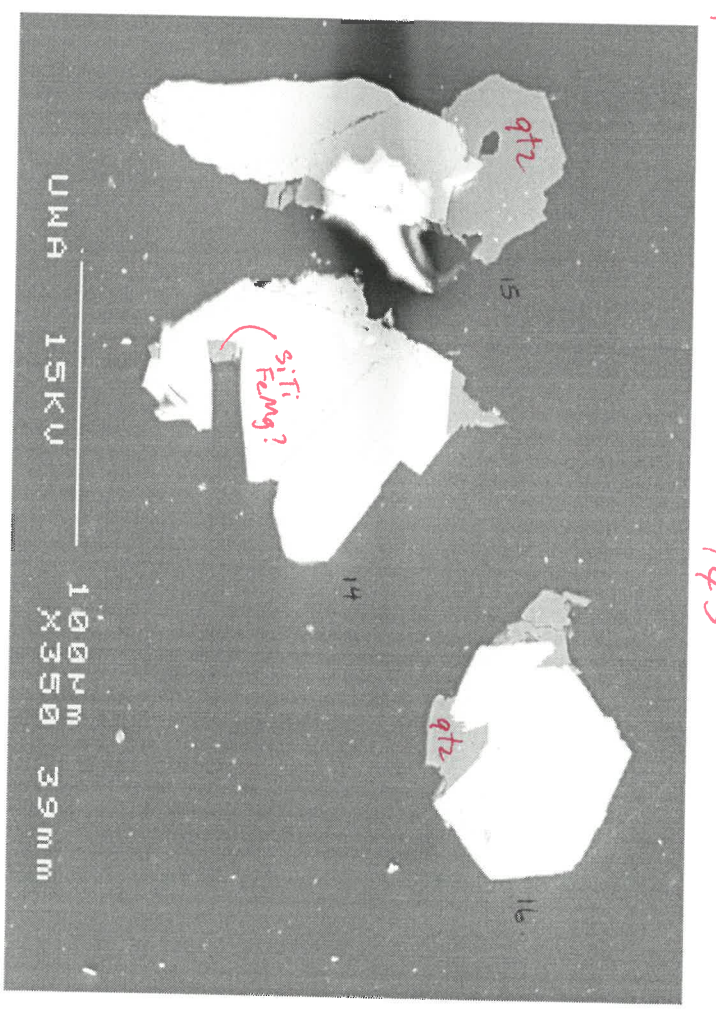
056b



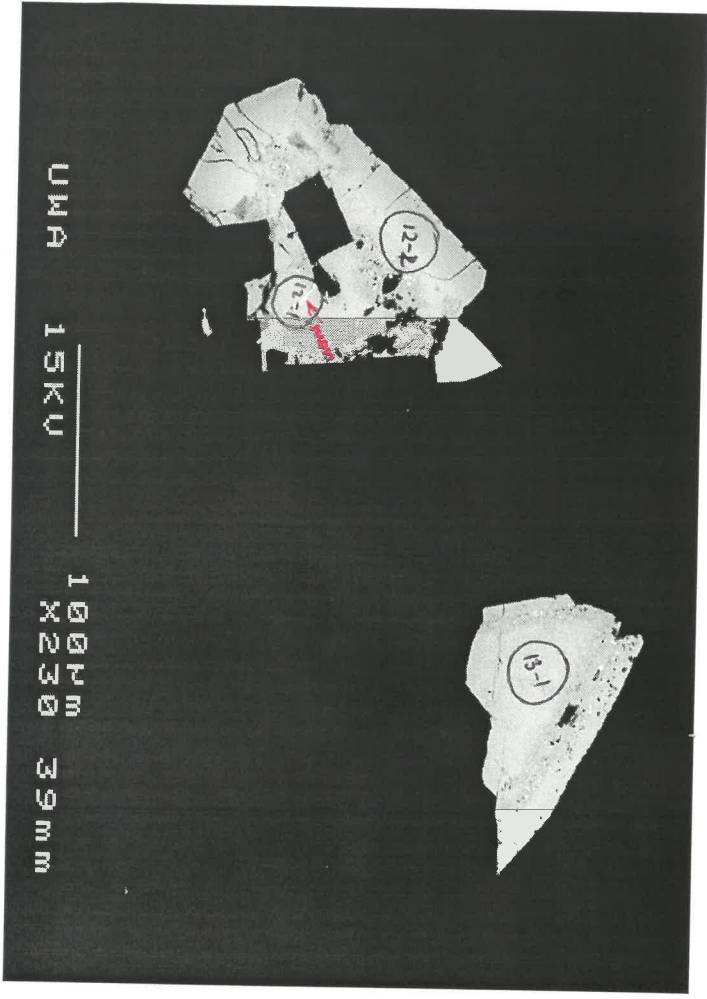


125

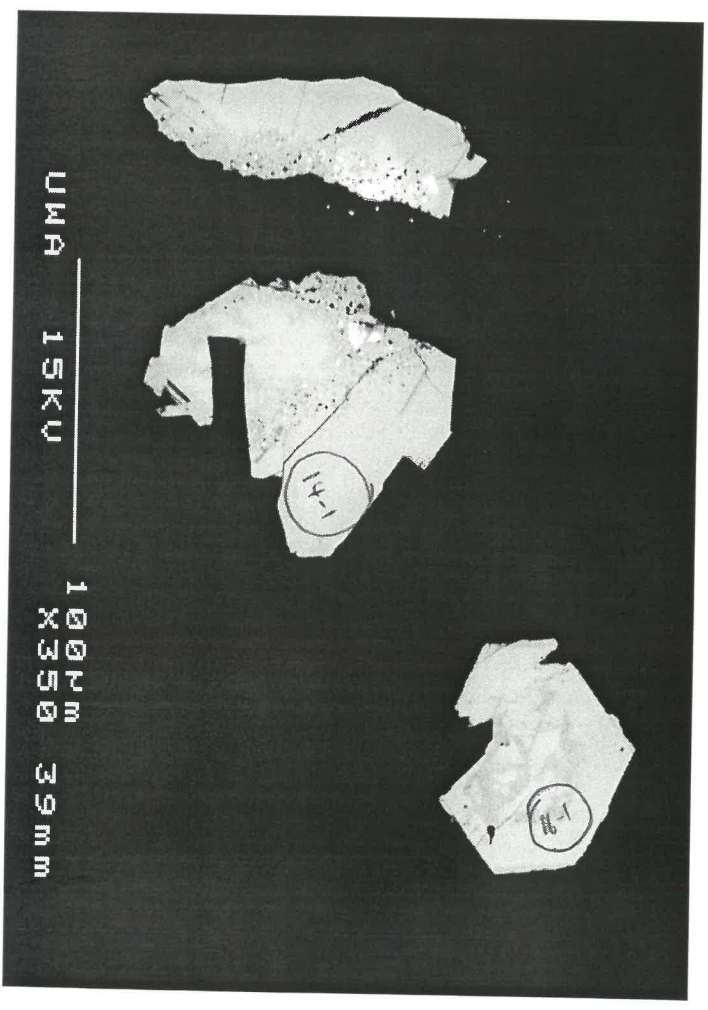
c69



145



128

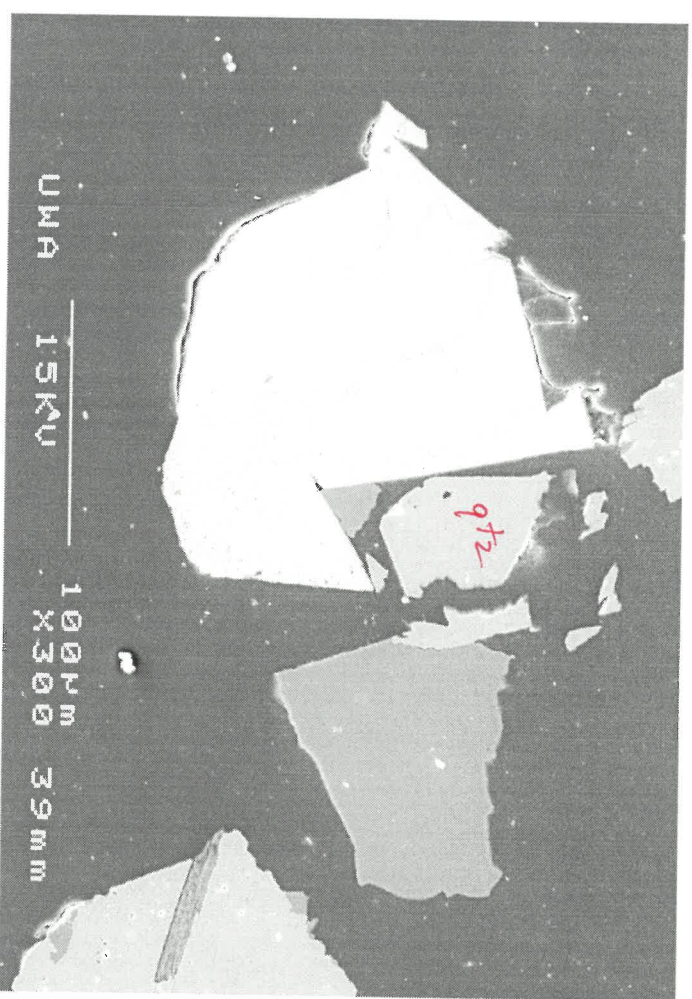


148

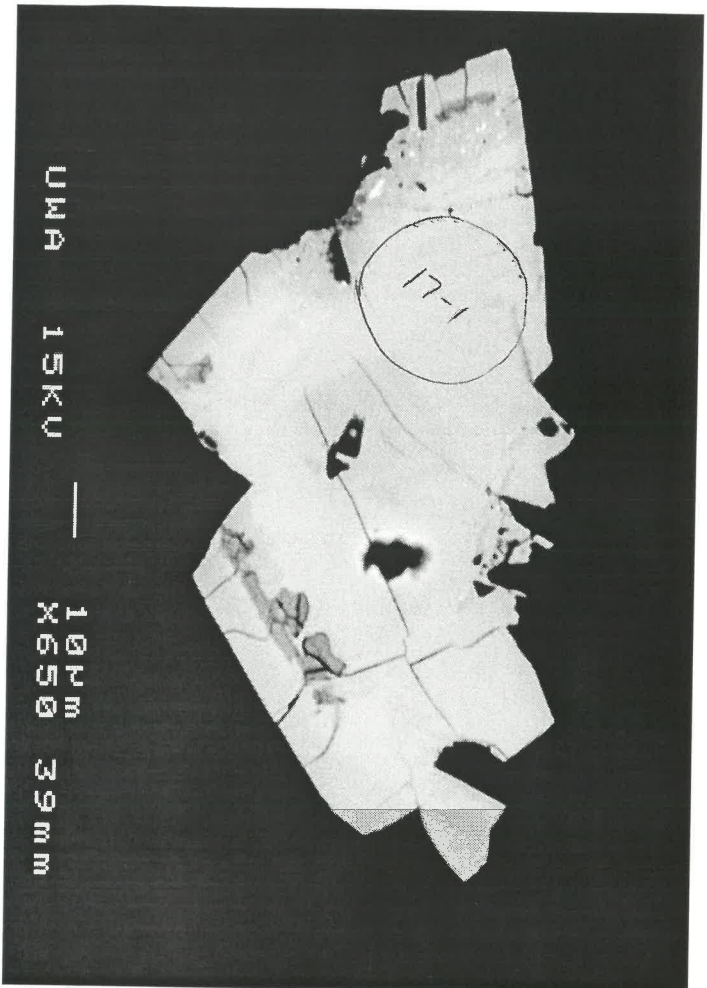


175

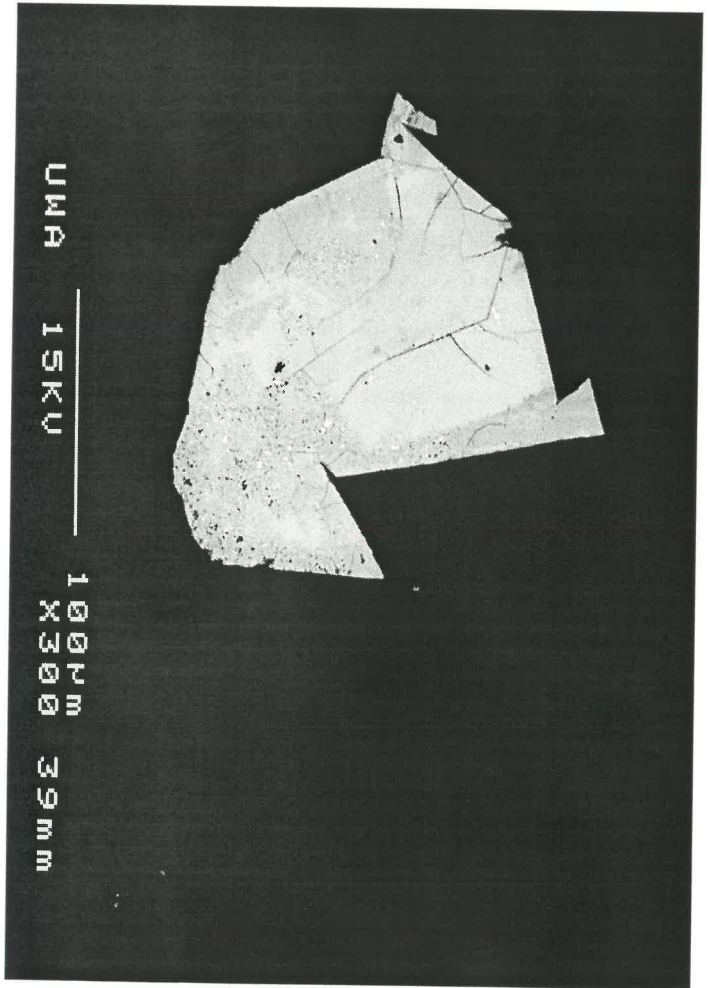
c69



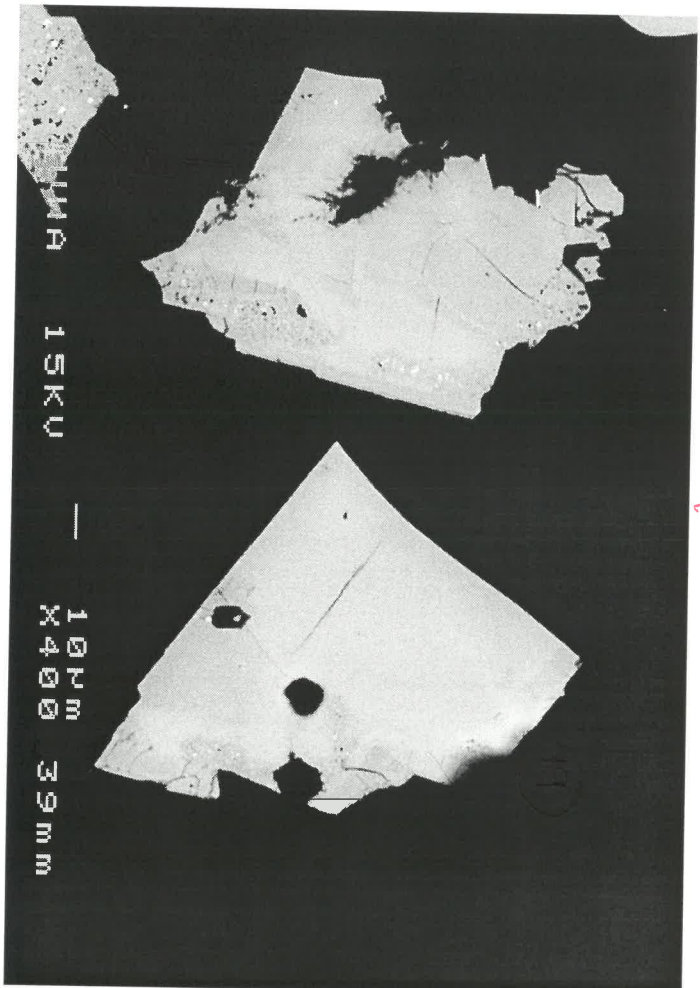
185



176

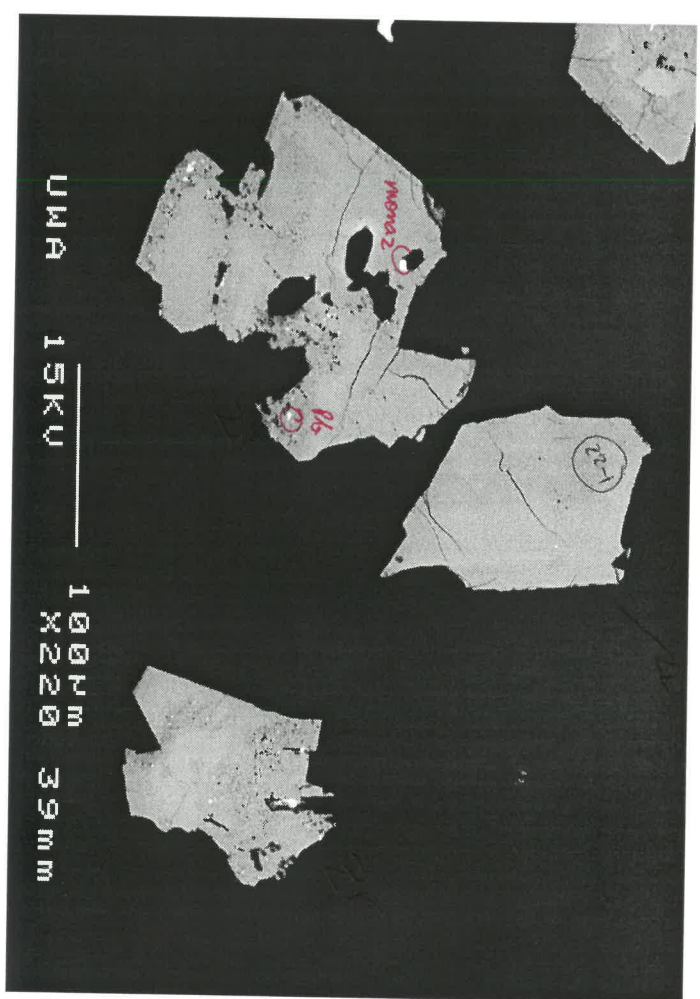


186

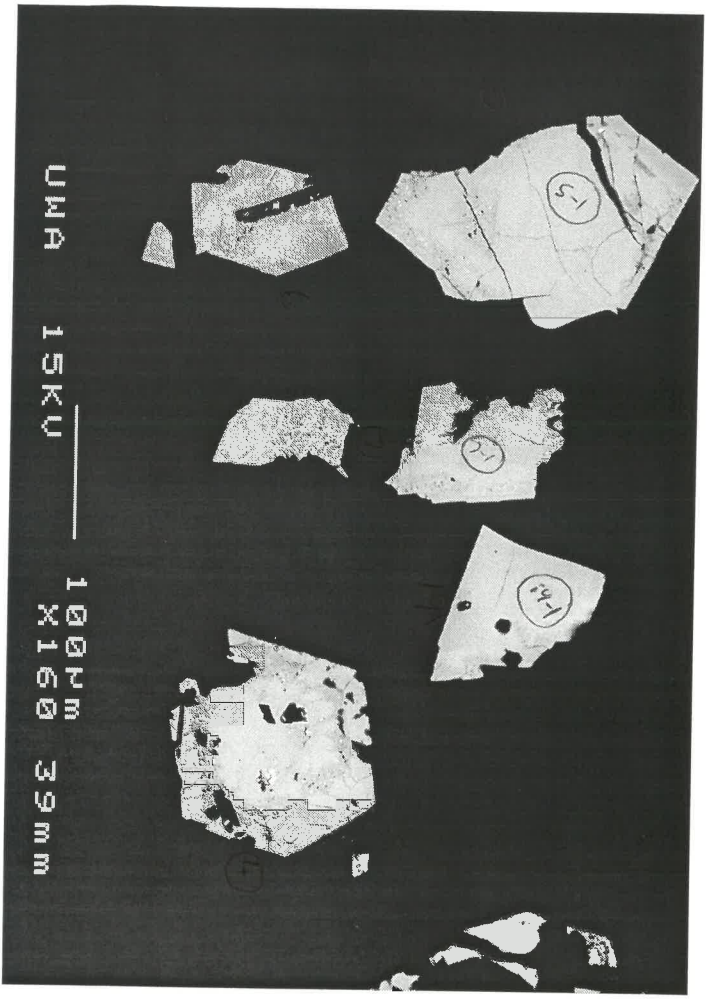


1982

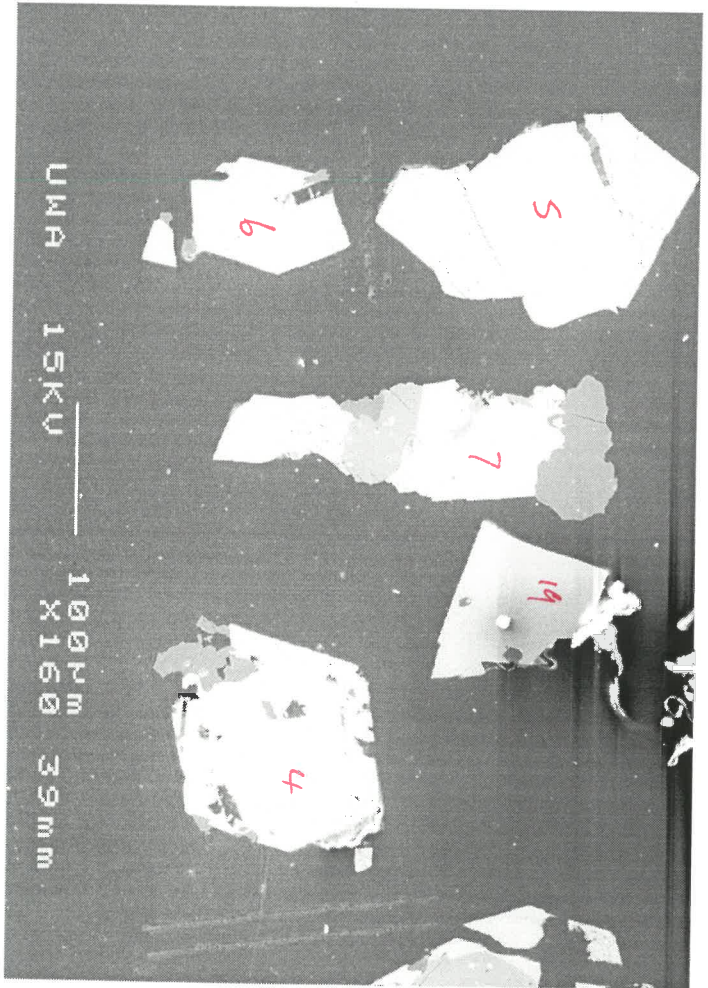
C69



214

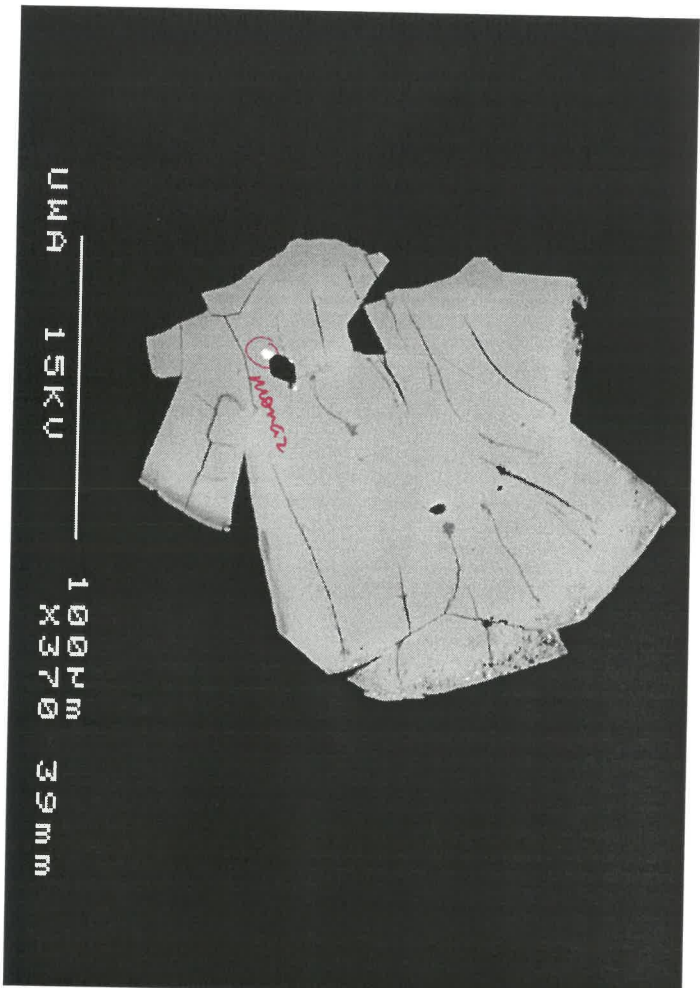


1985



195

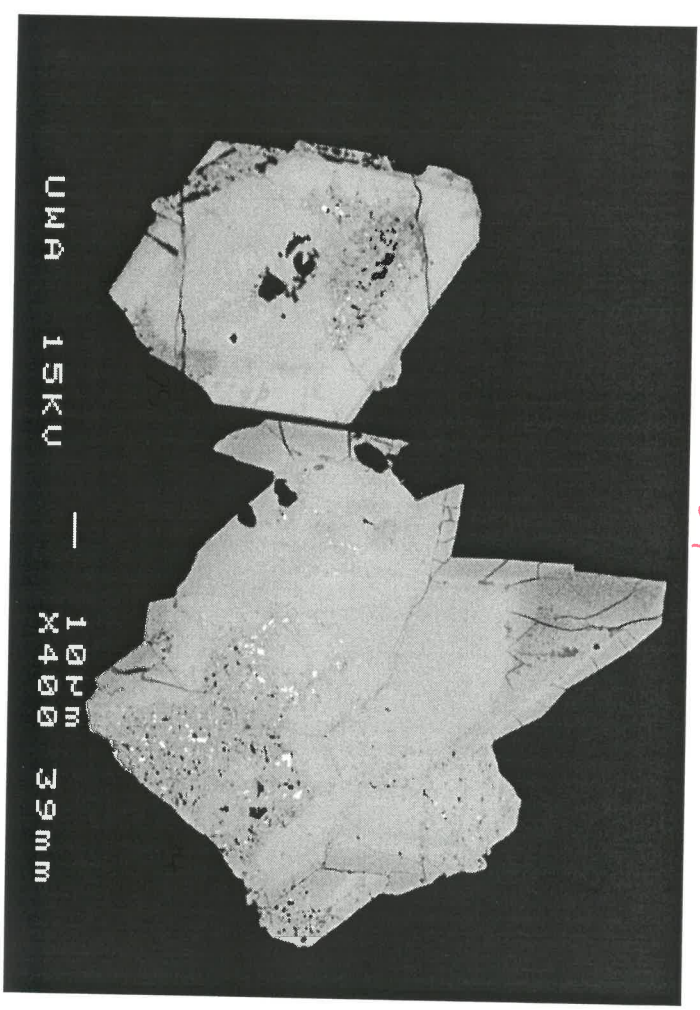
2316



UMA _____ 15KU _____ 100µm X370 39mm

C69

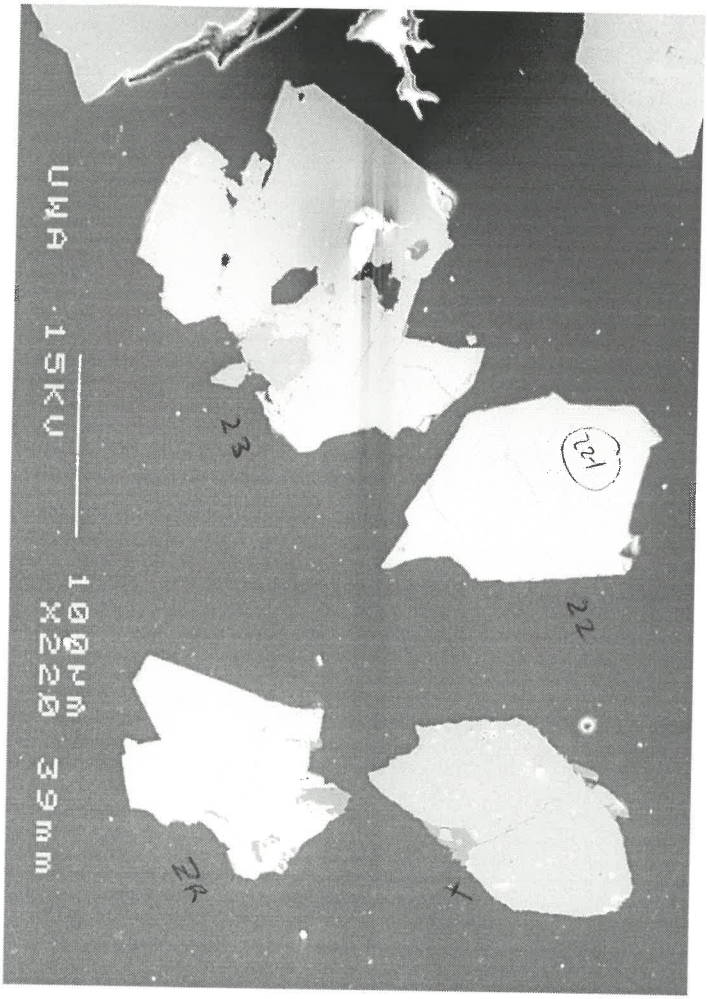
246



UMA 15KU _____ 100µm X400 39mm

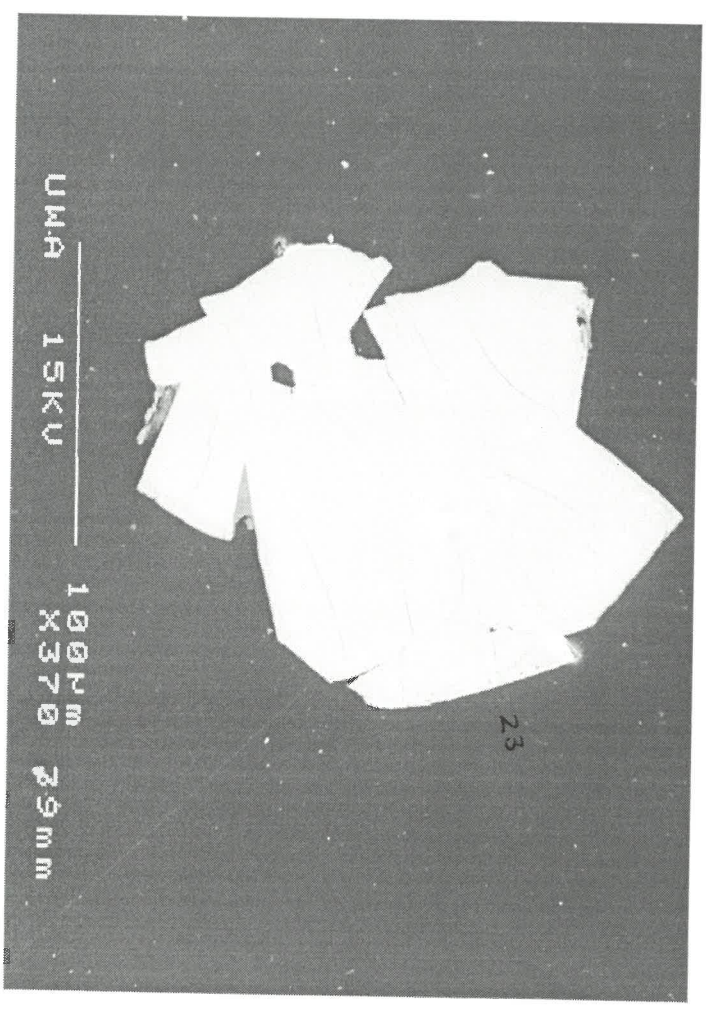
bright spots = Pb + monaz

215



UMA 15KU _____ 100µm X220 39mm

235



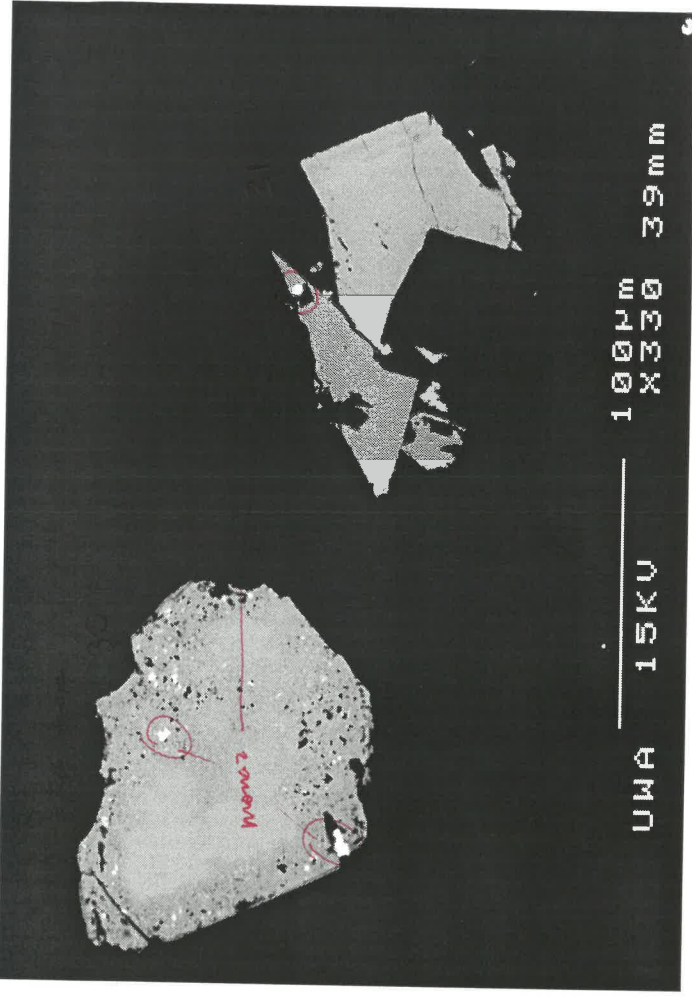
UMA 15KU _____ 100µm X370 39mm

26b

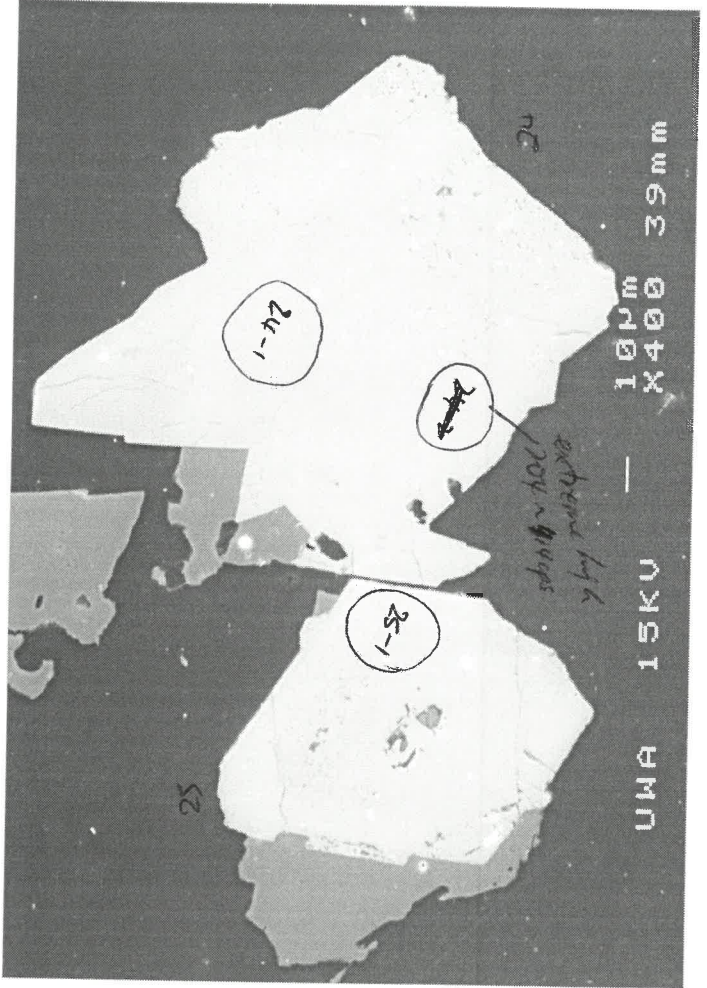
c69



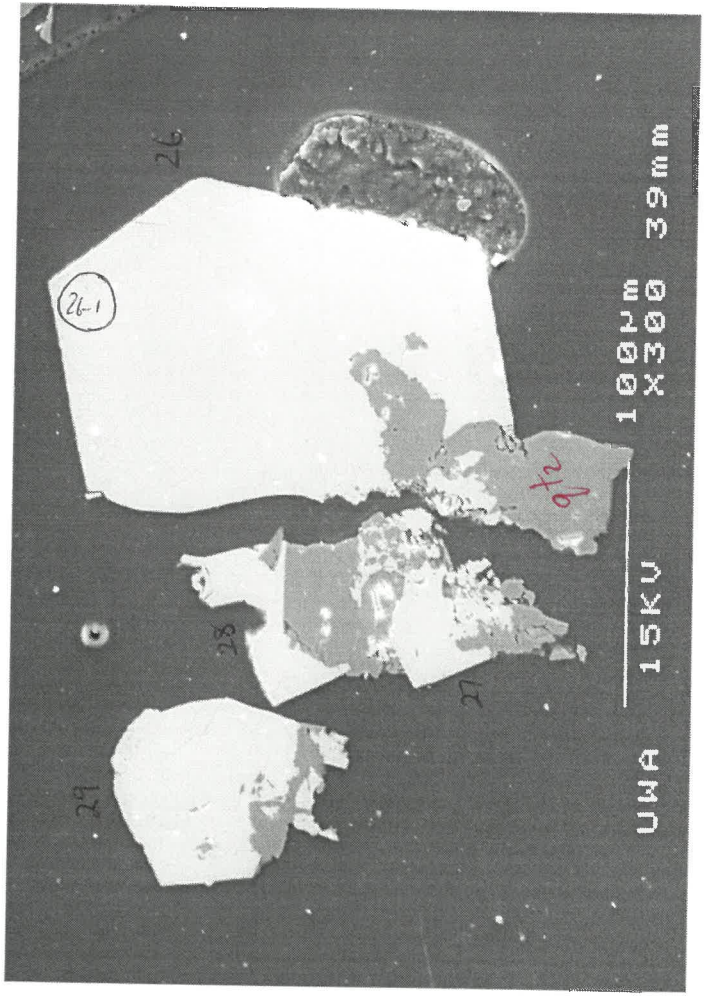
30b



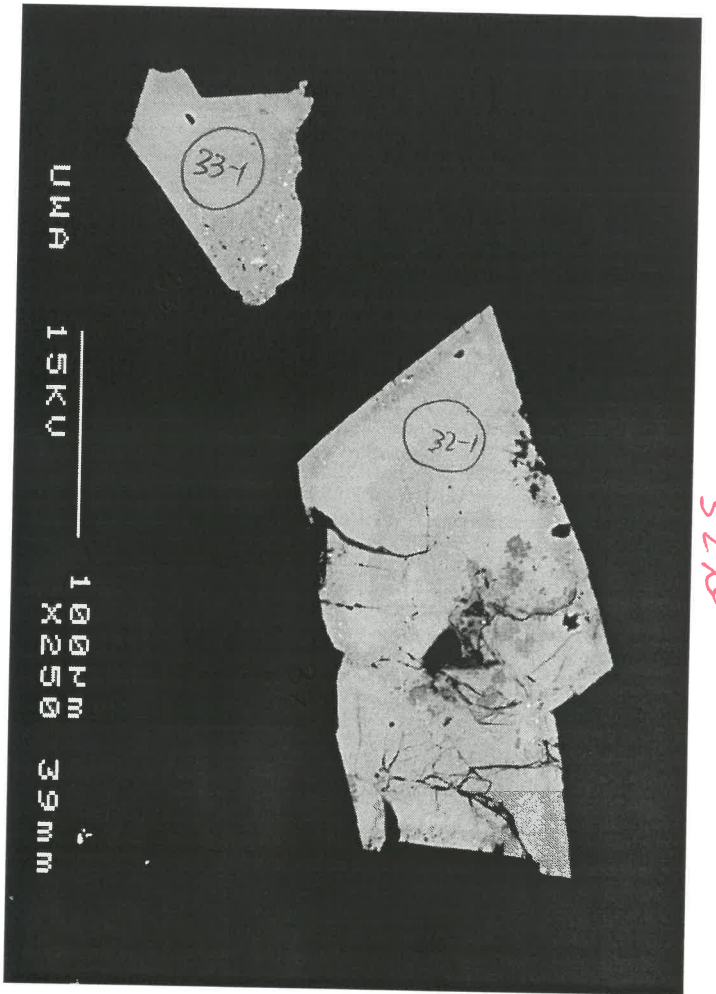
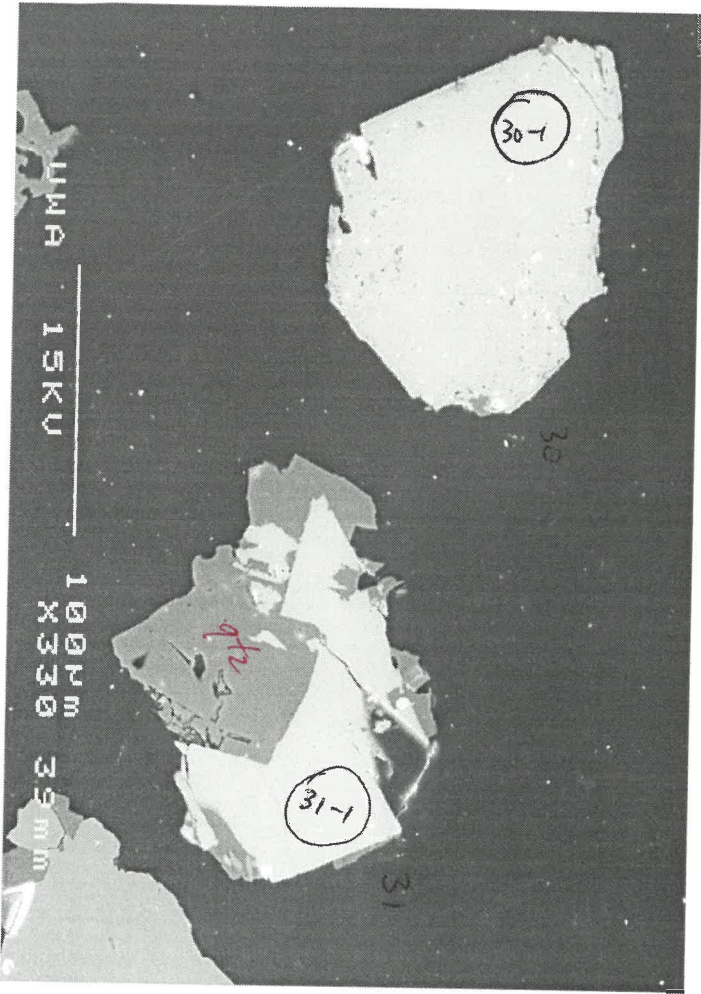
24s



26s

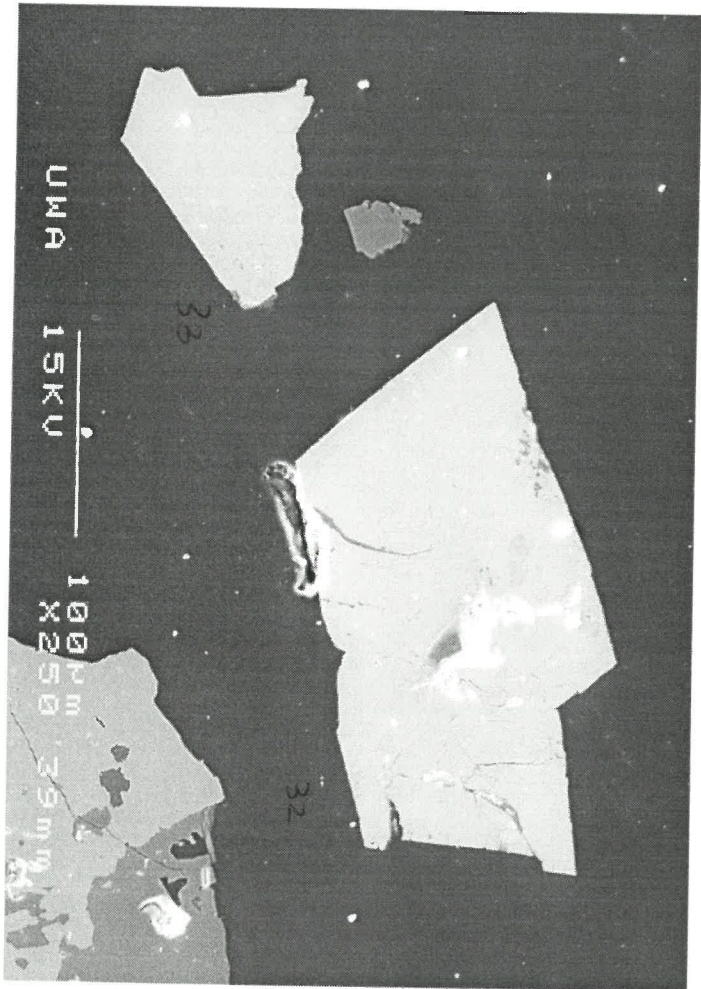


305

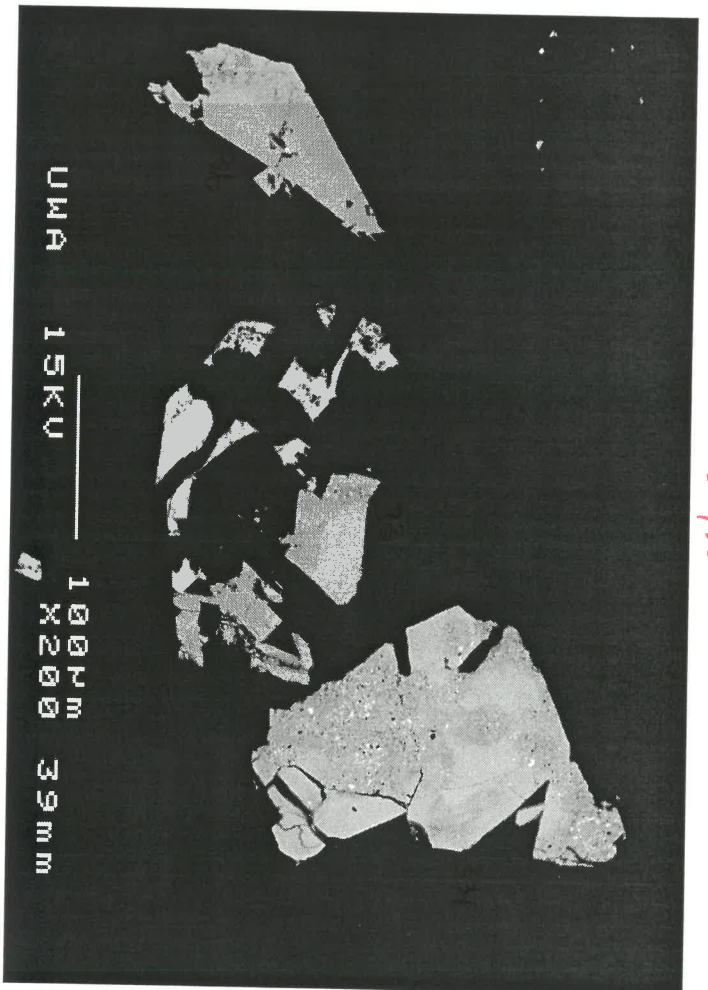


326

369



325



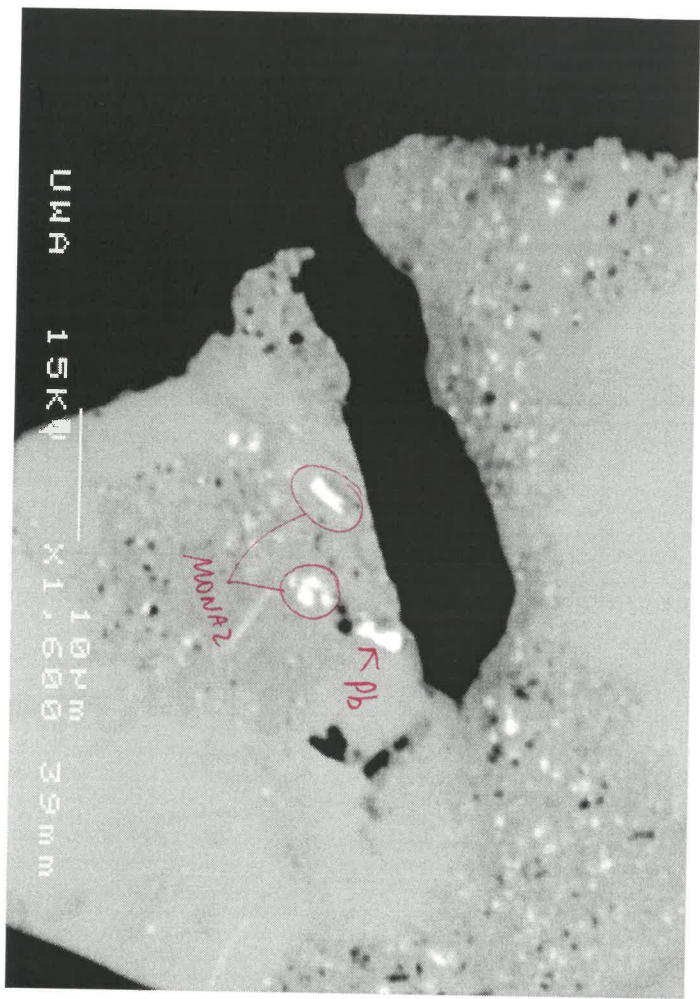
348

bright spots = menses.

3462



3463

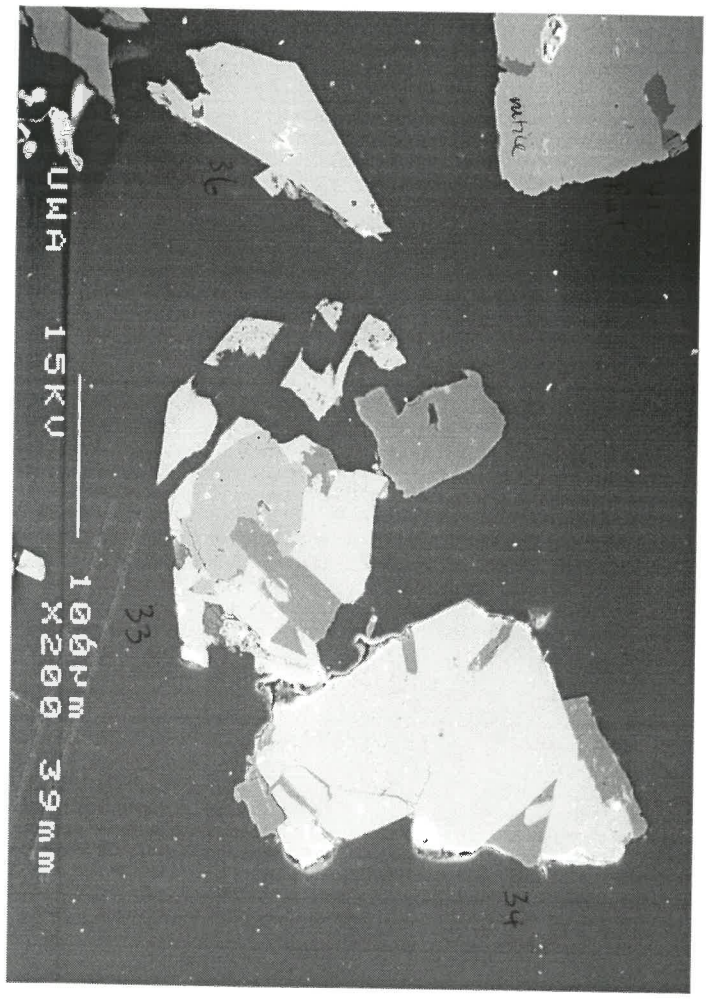


369



376

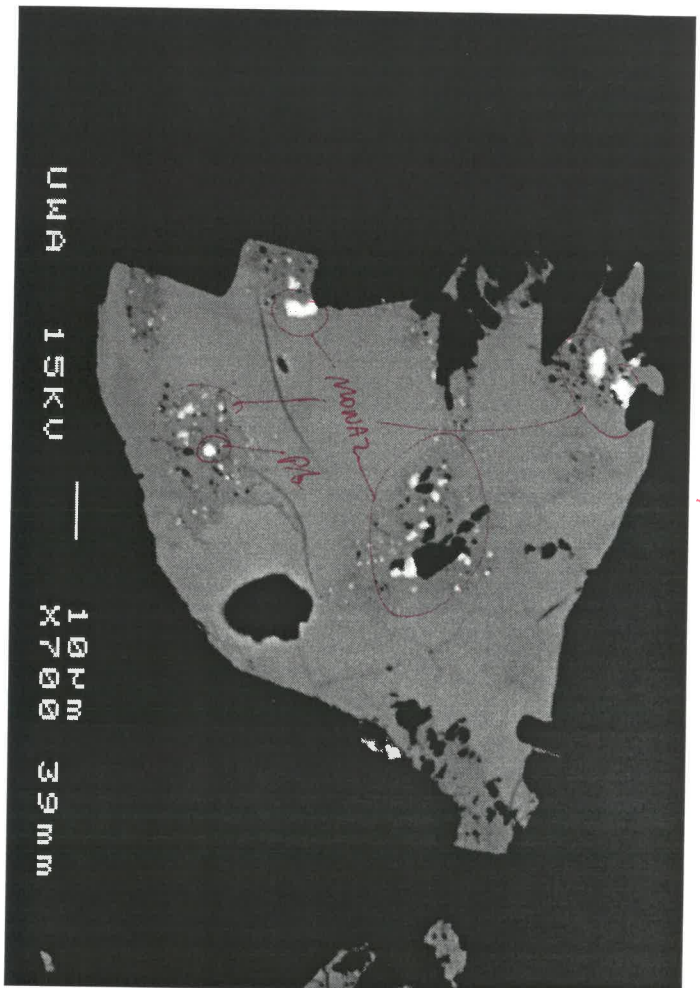
345



3763

c69

395

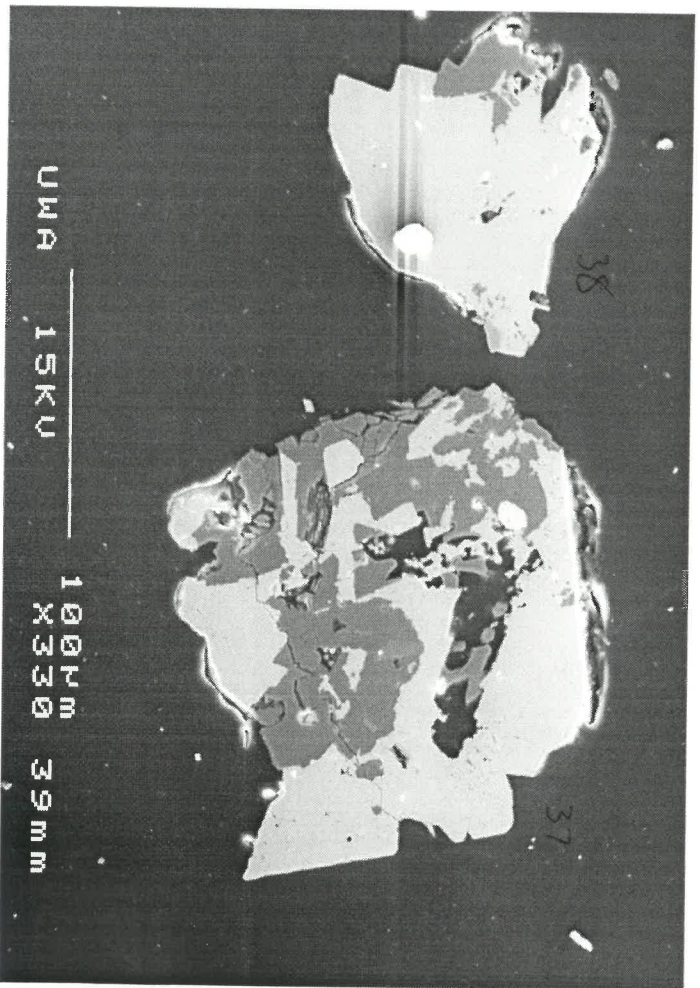
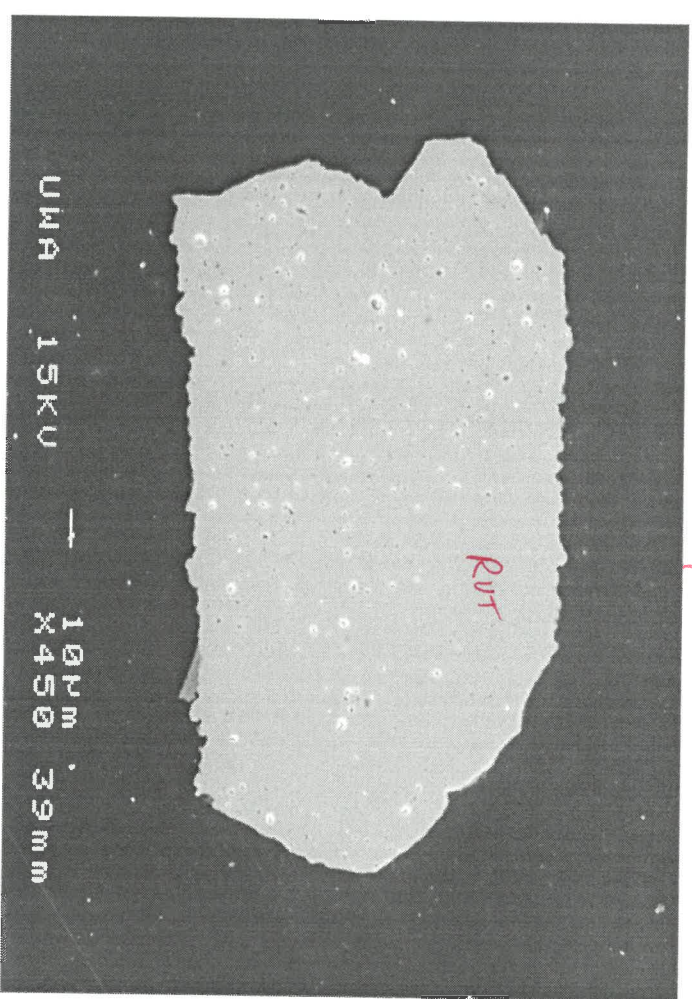


37



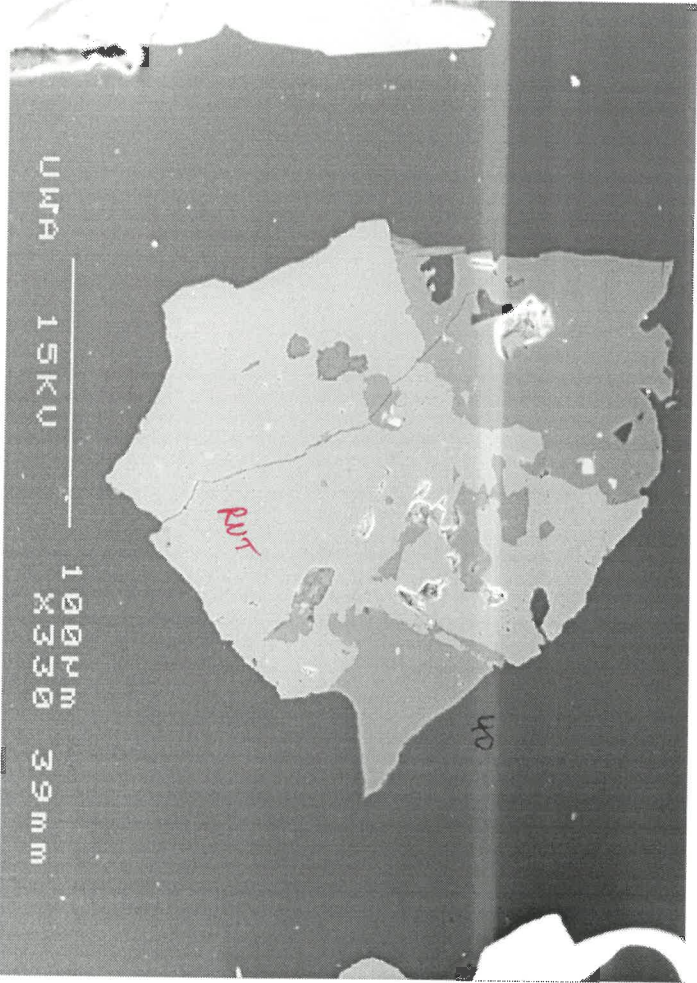
3762

39

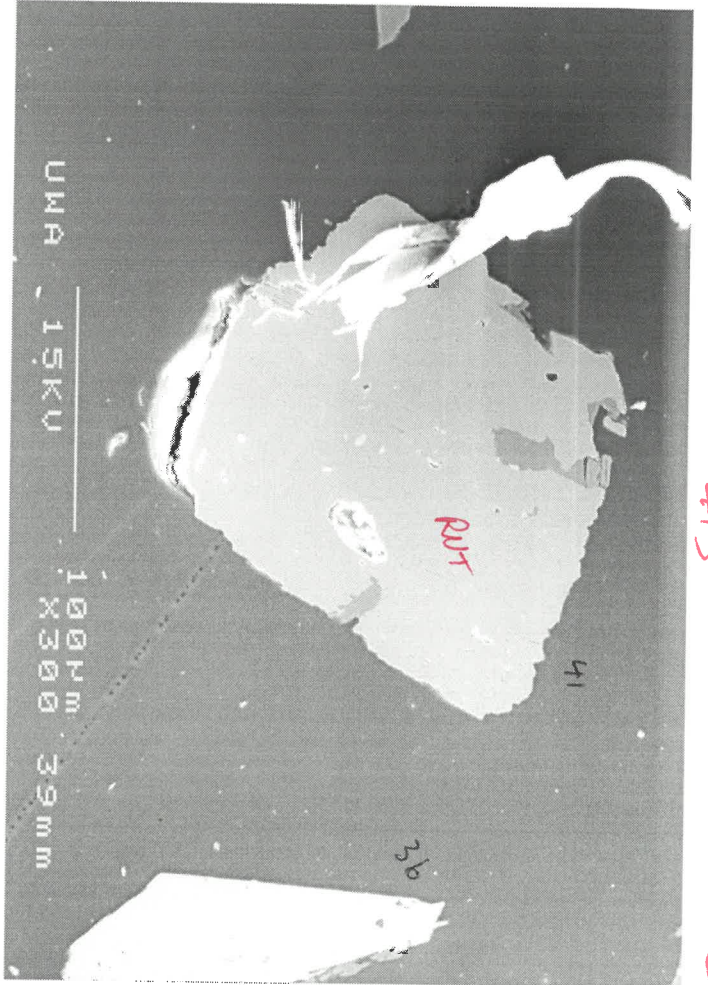


375

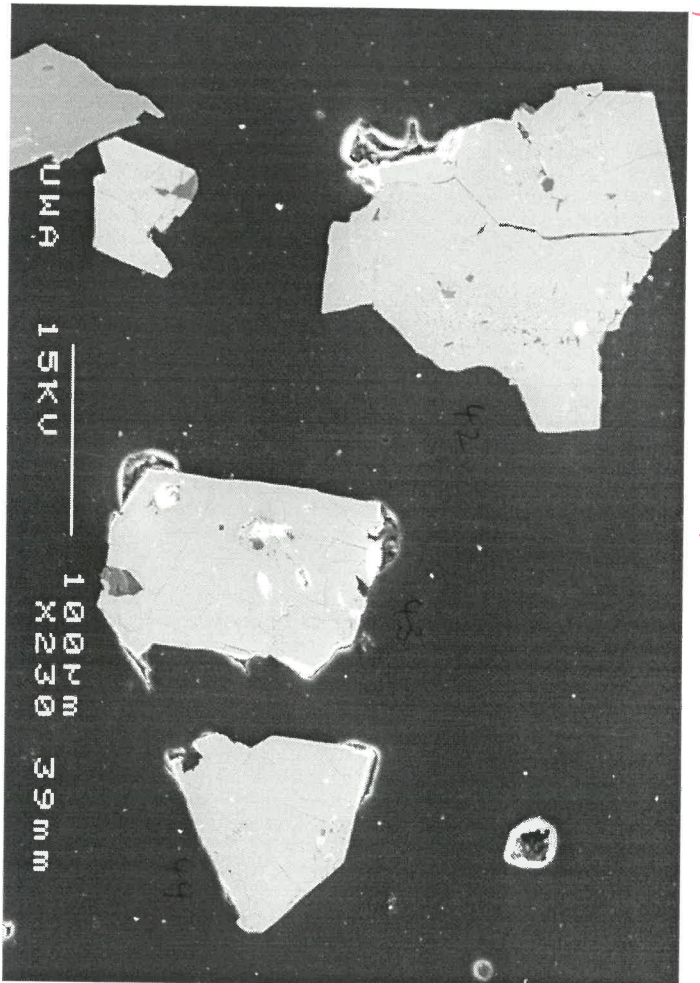
40s



41s

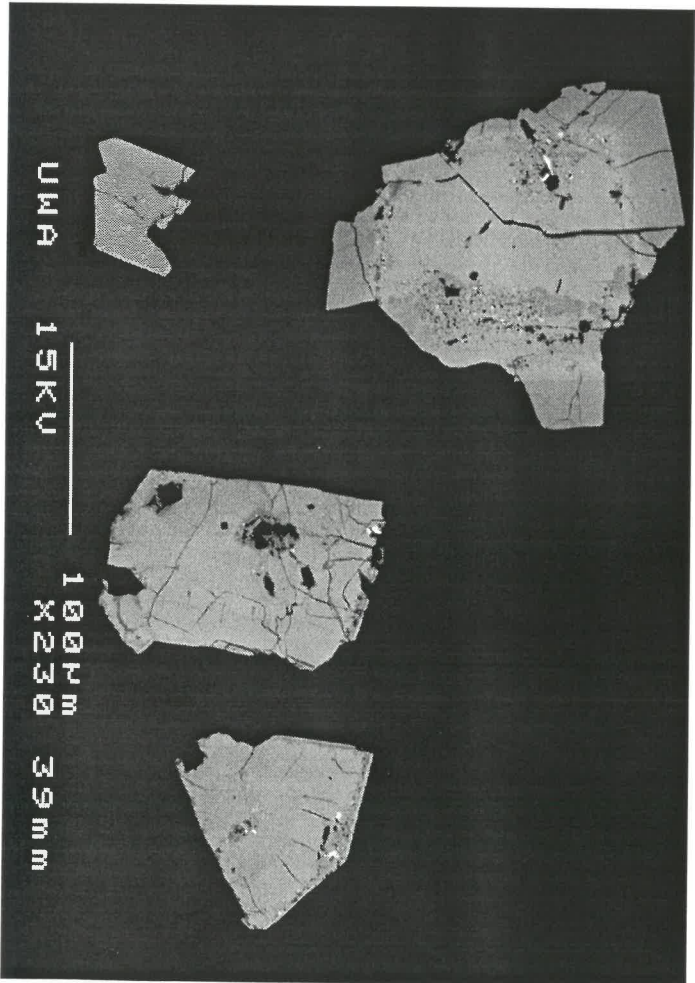


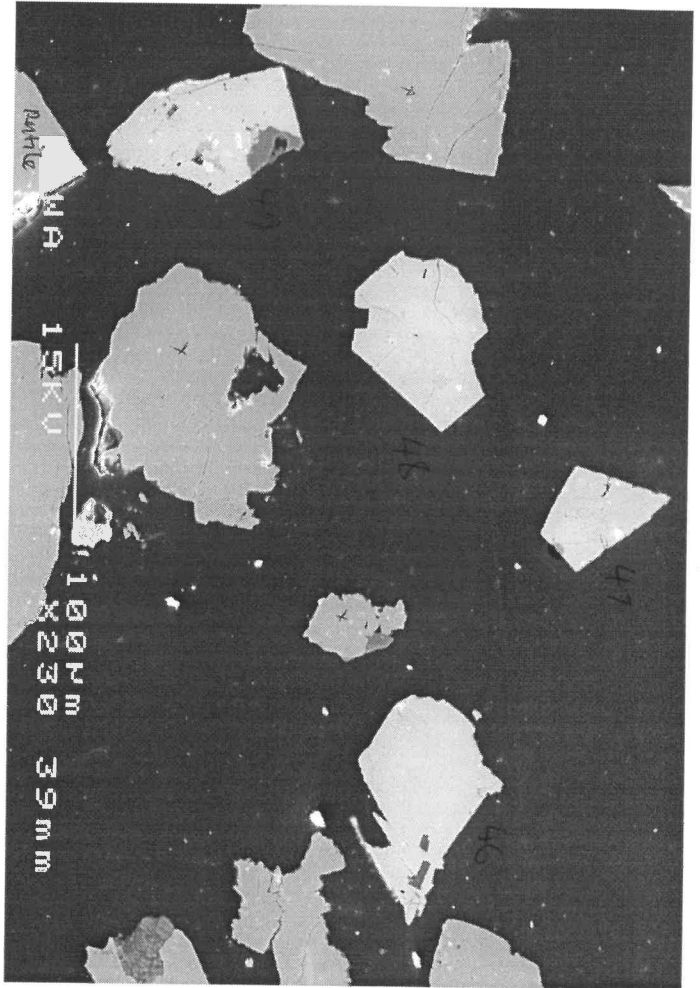
42s



42s

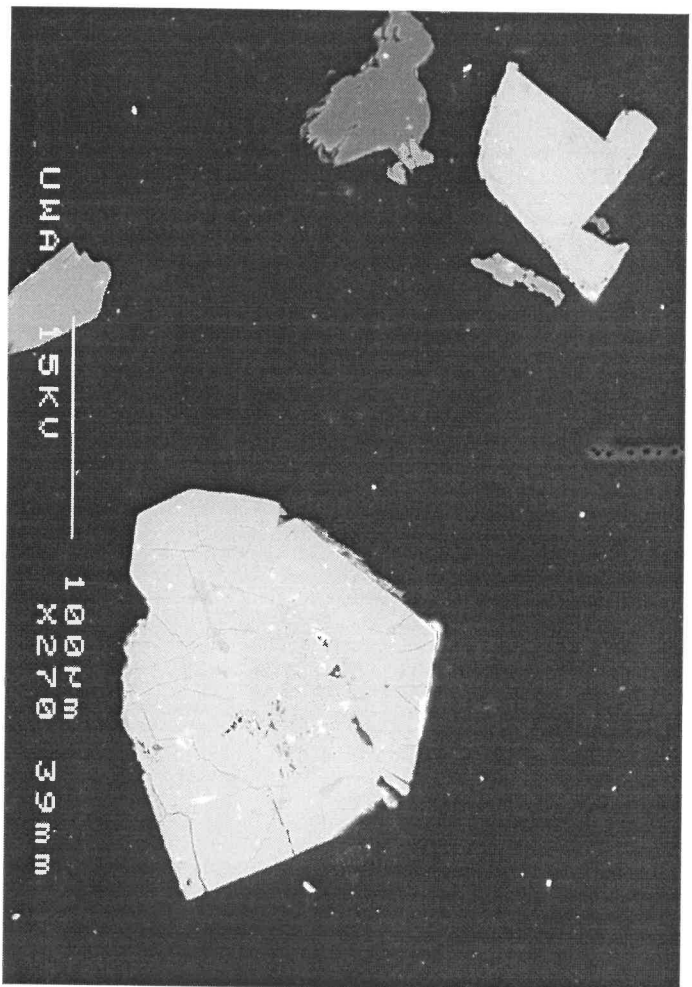
42s



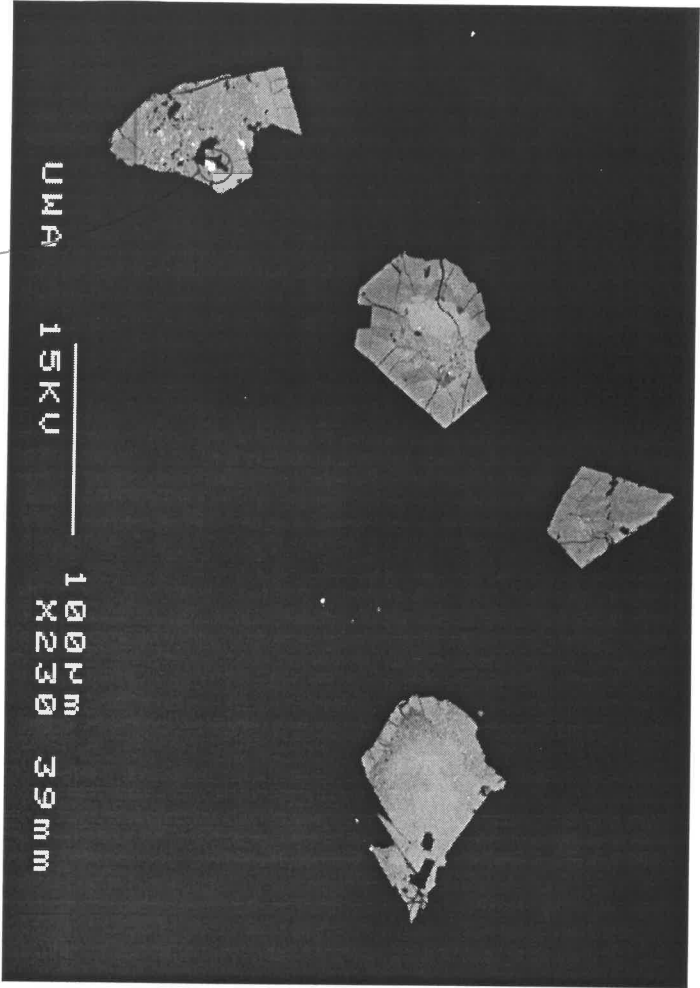


465

C69

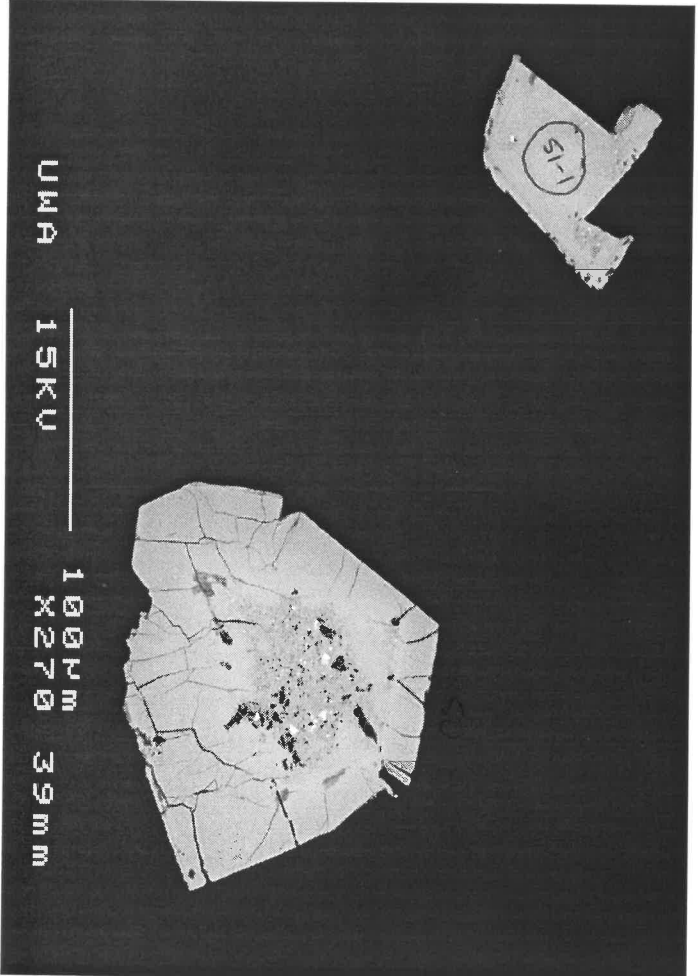


505

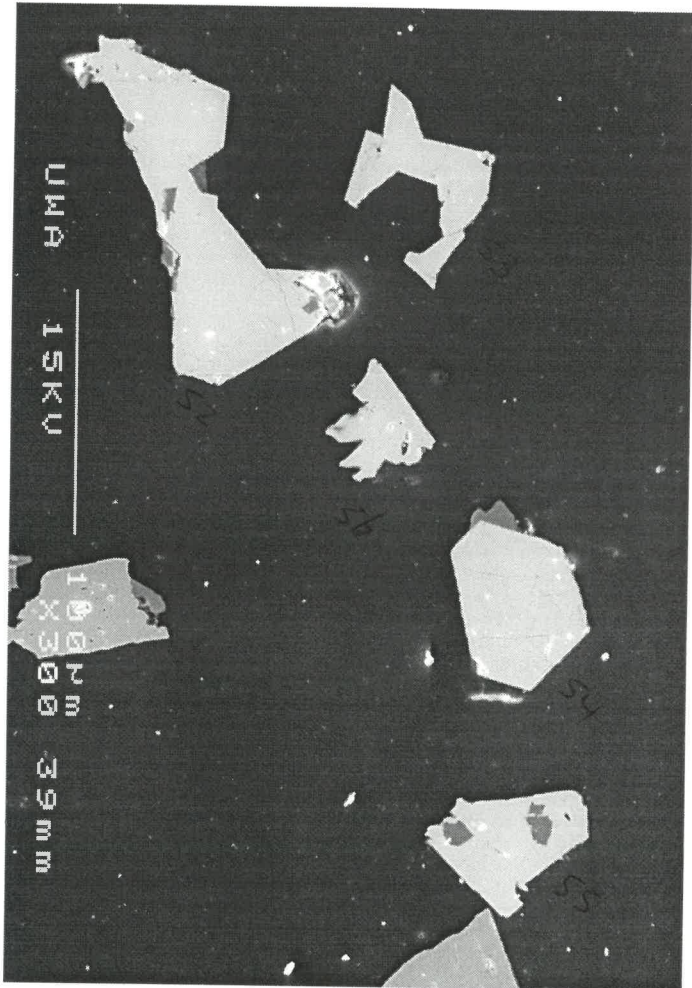


M0042

466



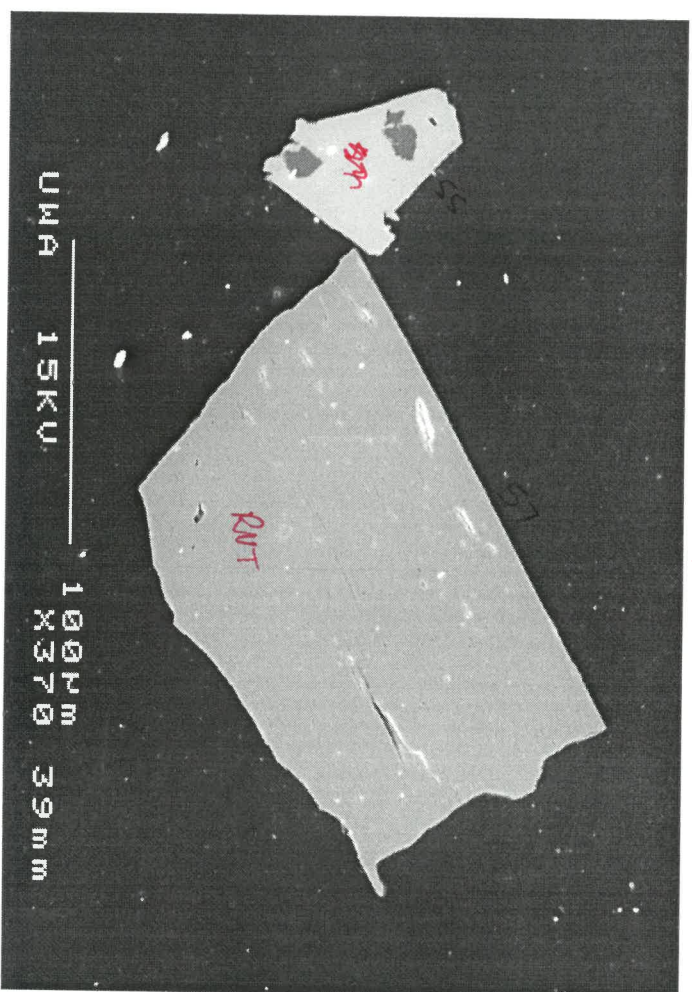
506



UMA 15KV 100µm X300 39mm

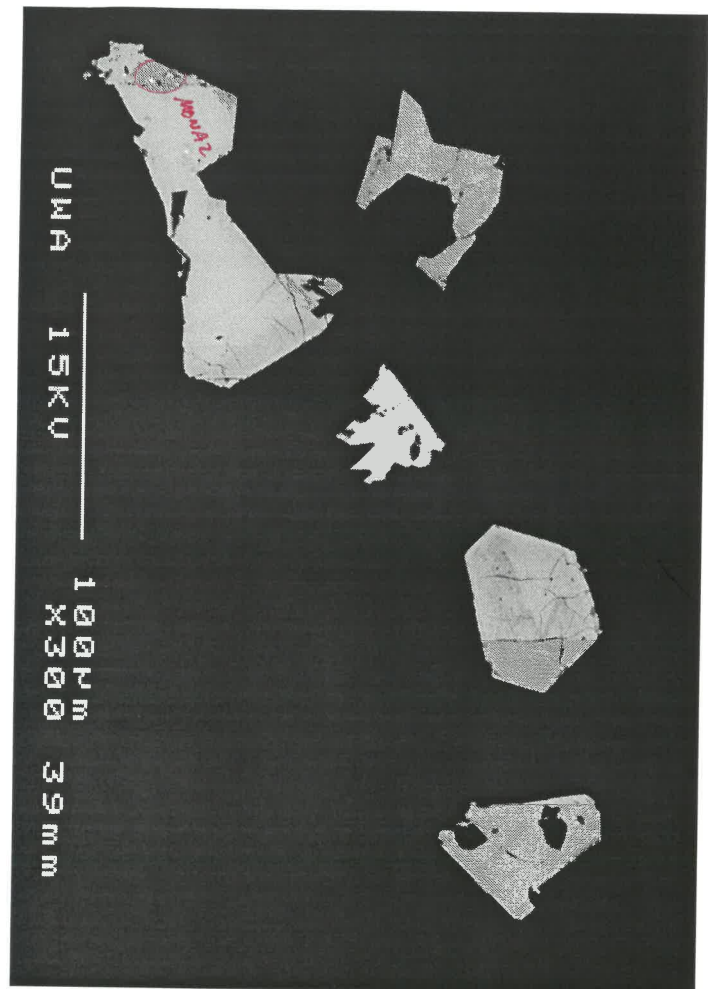
525

669



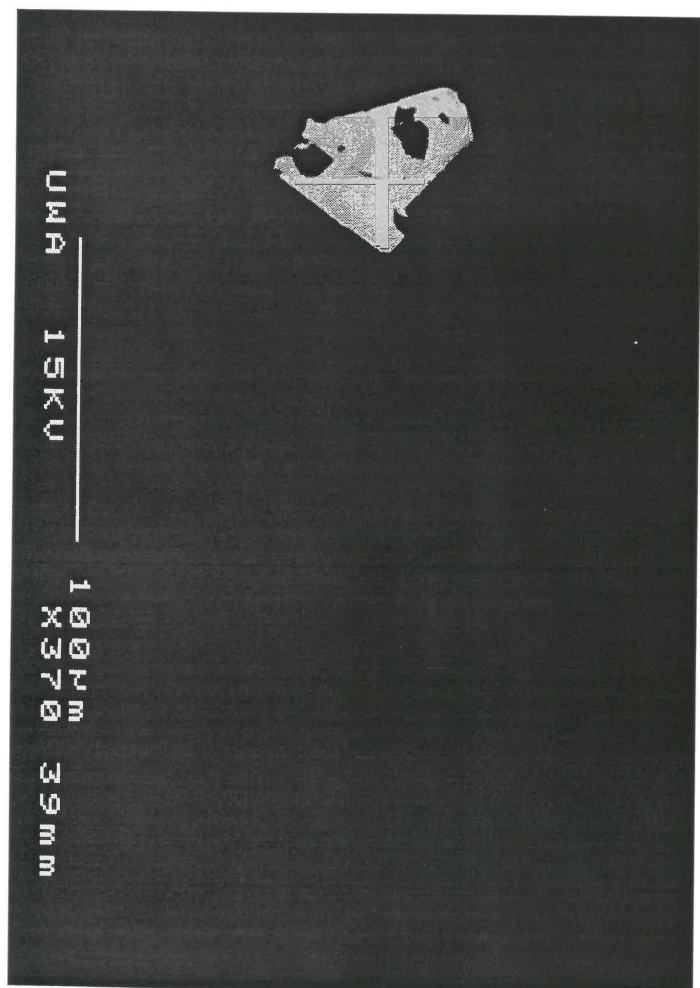
UMA 15KV 100µm X370 39mm

575



UMA 15KV 100µm X300 39mm

526

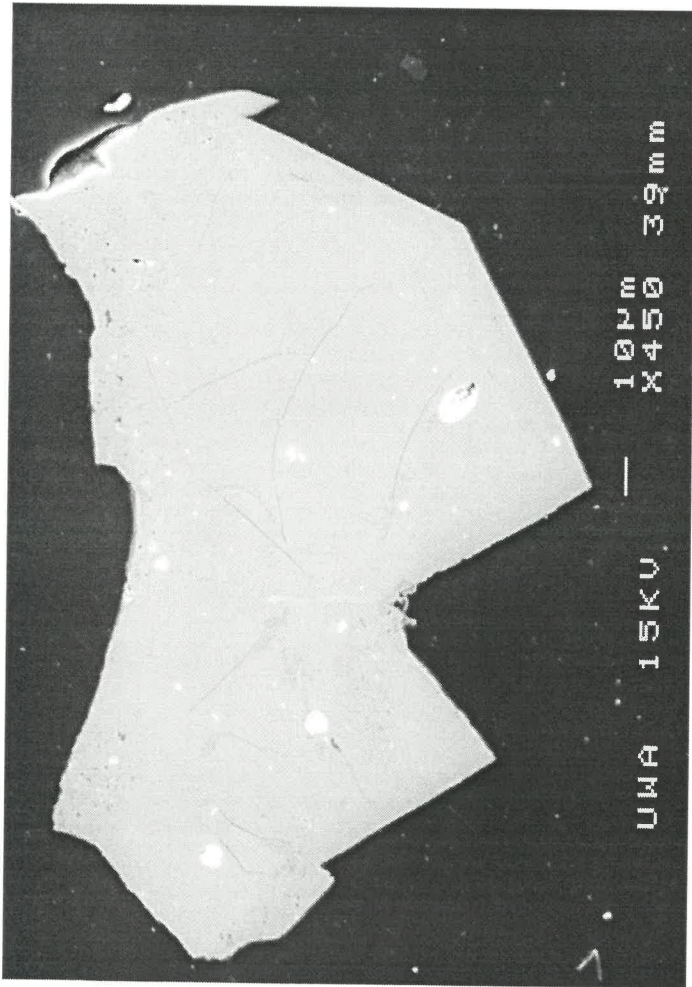


UMA 15KV 100µm X370 39mm

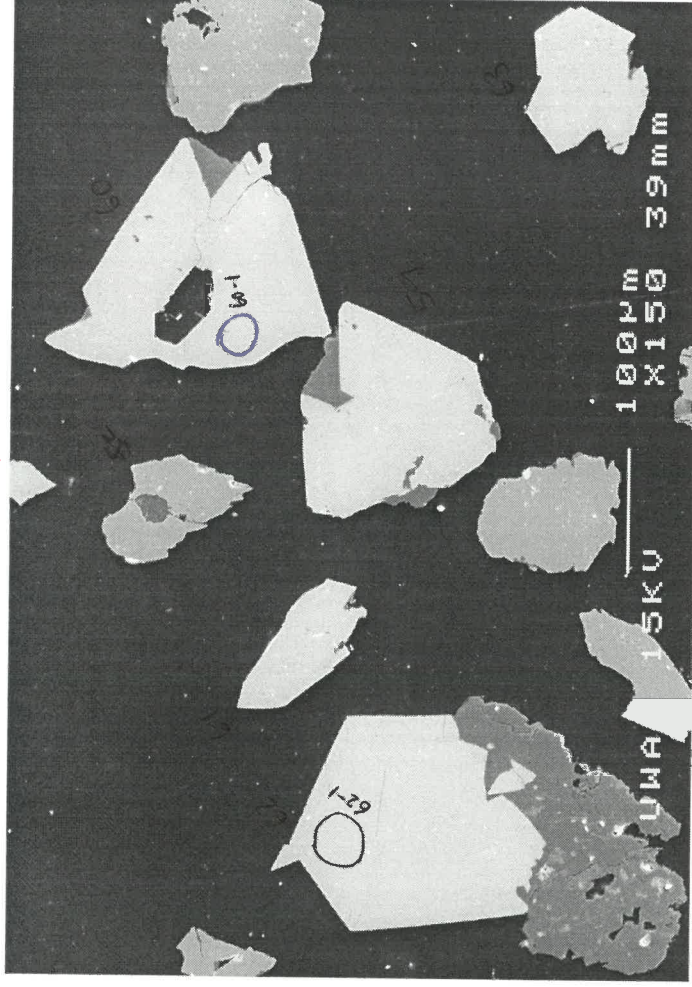
576

585

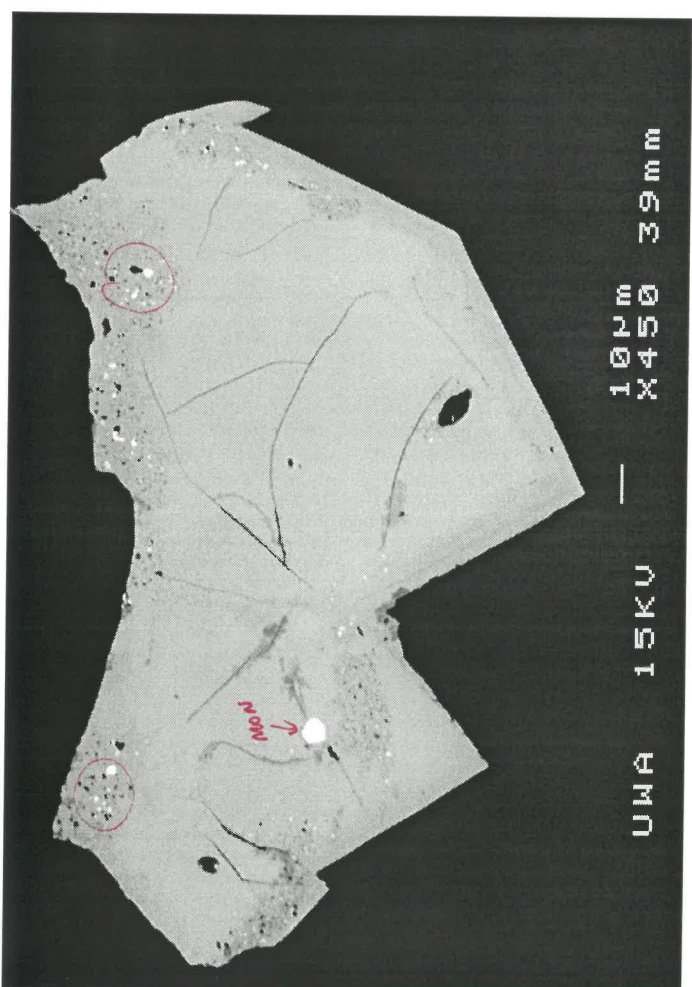
c69



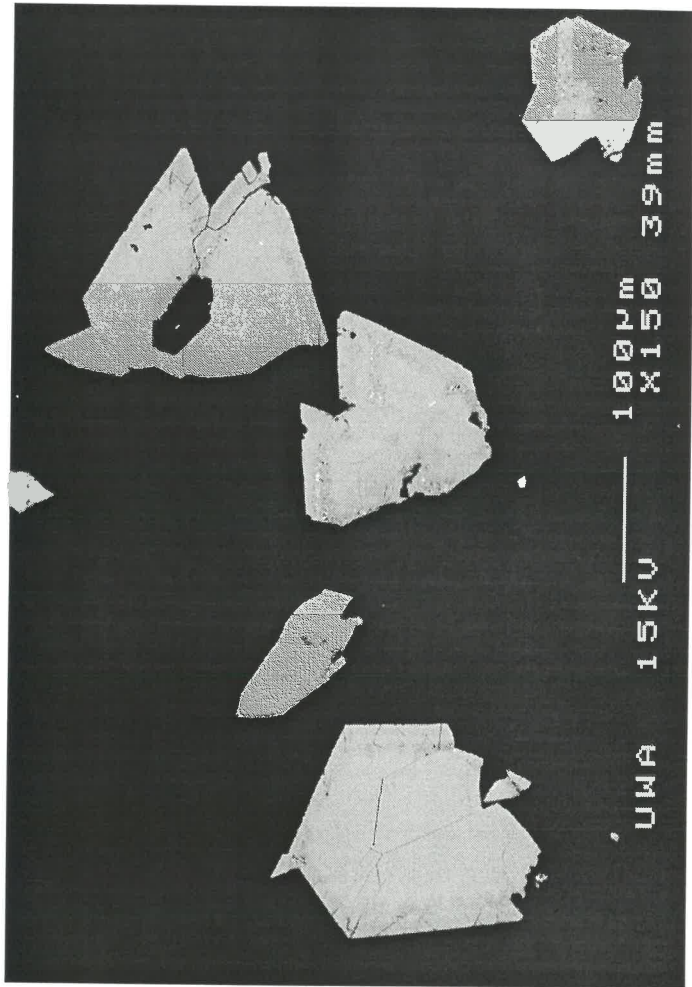
589



586



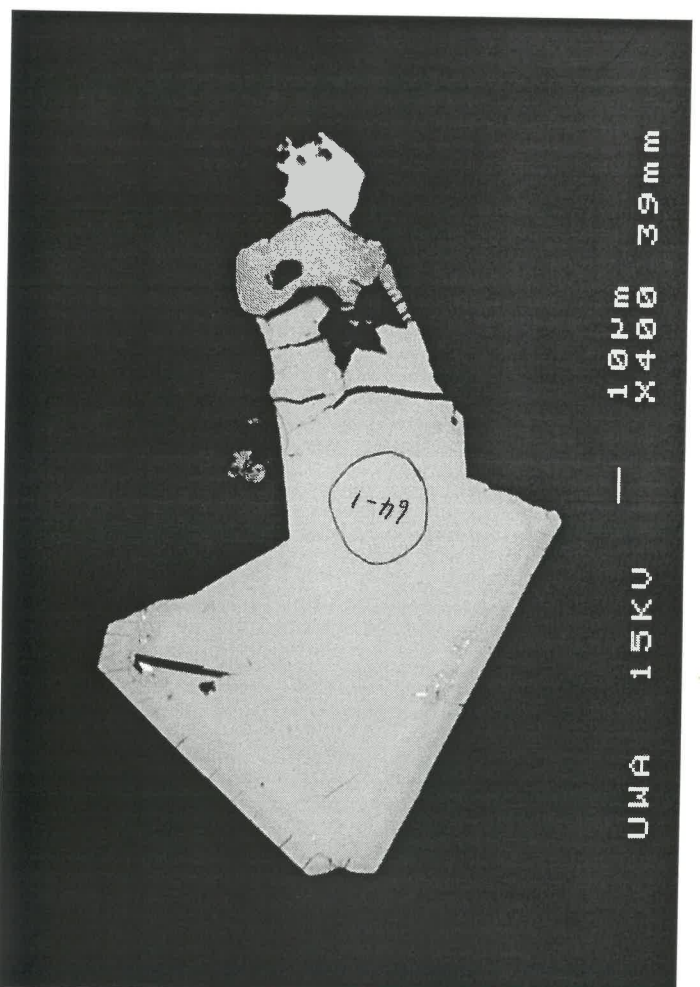
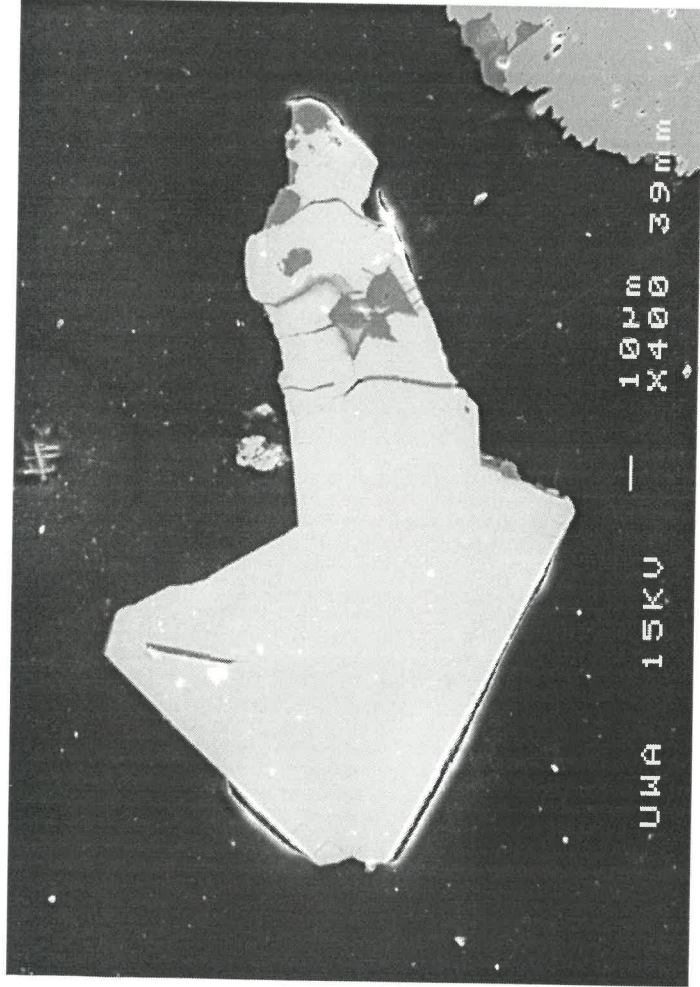
596



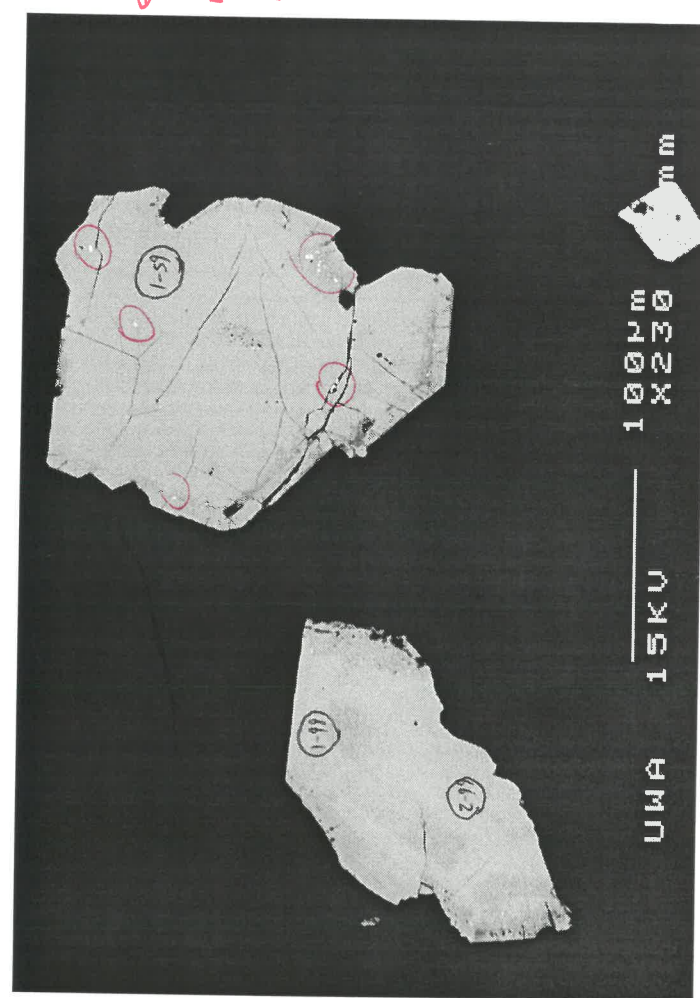
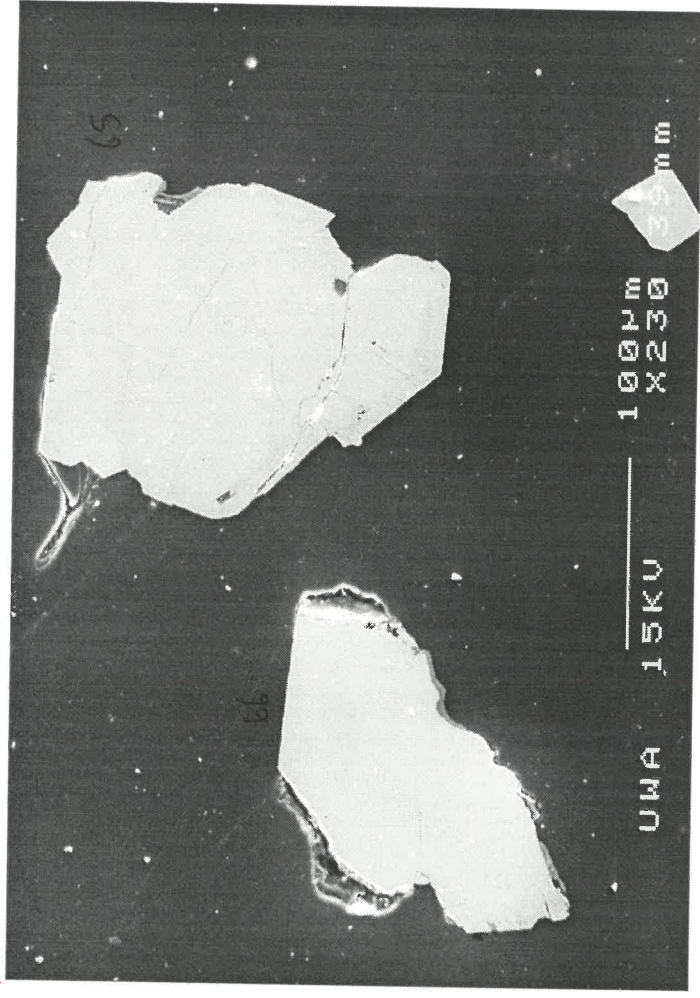
64s

669

65s



64b



65b

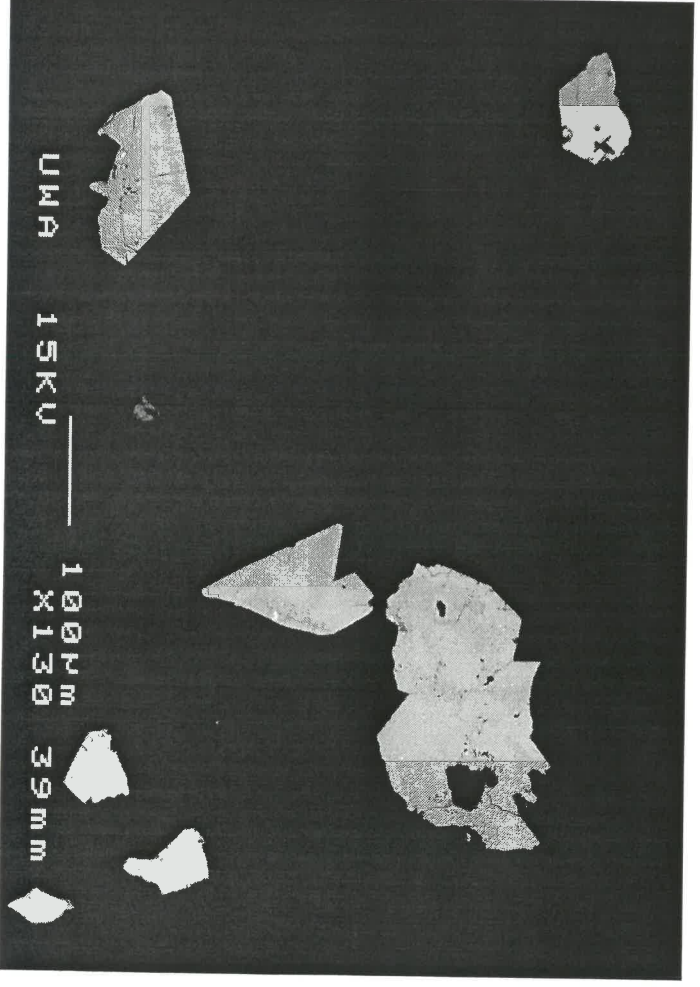
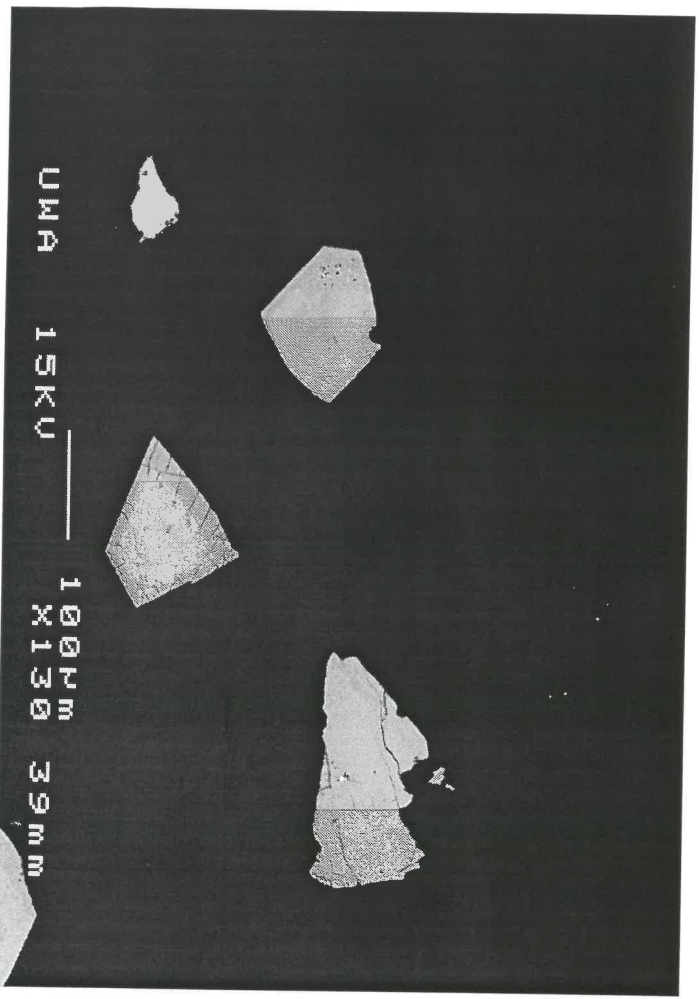
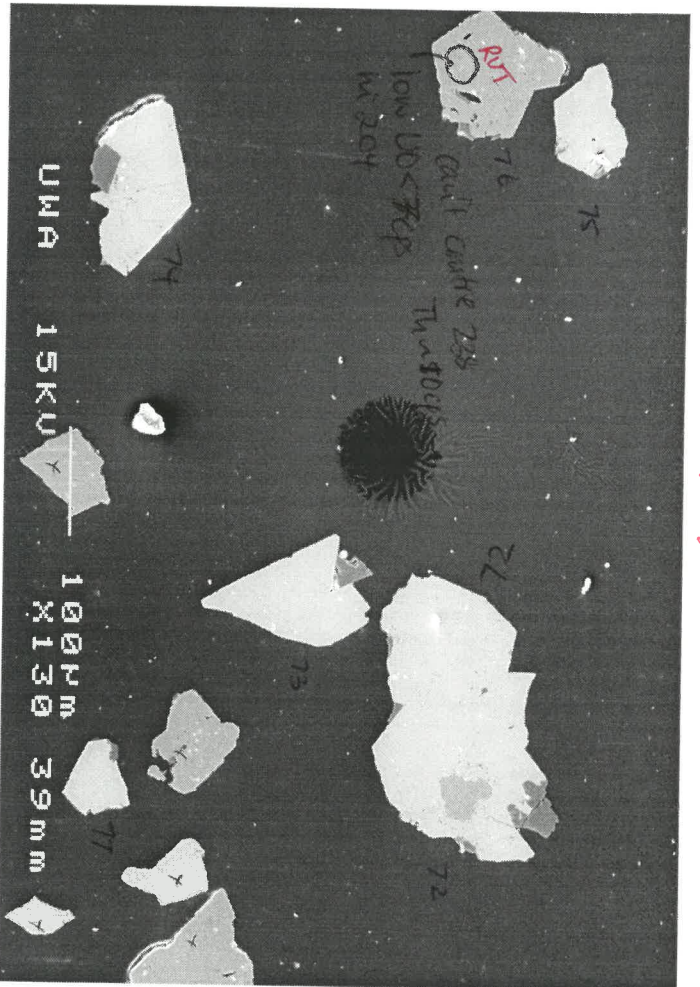
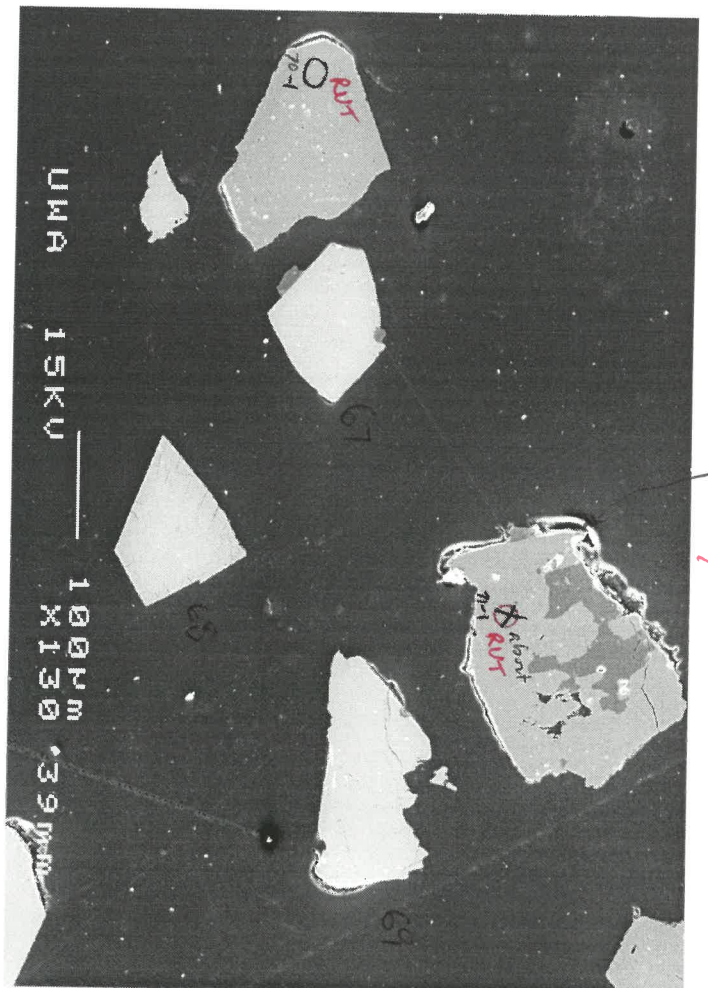
↓
inclusions
= monaz + Pb

high 20% in 90% pass poor conductivity

675

669

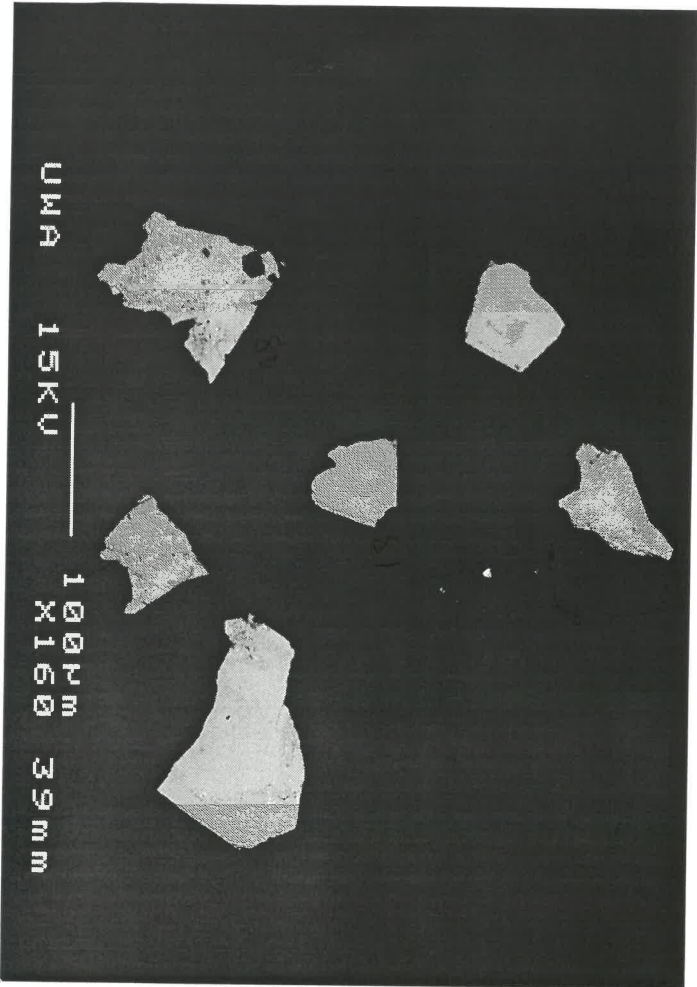
725



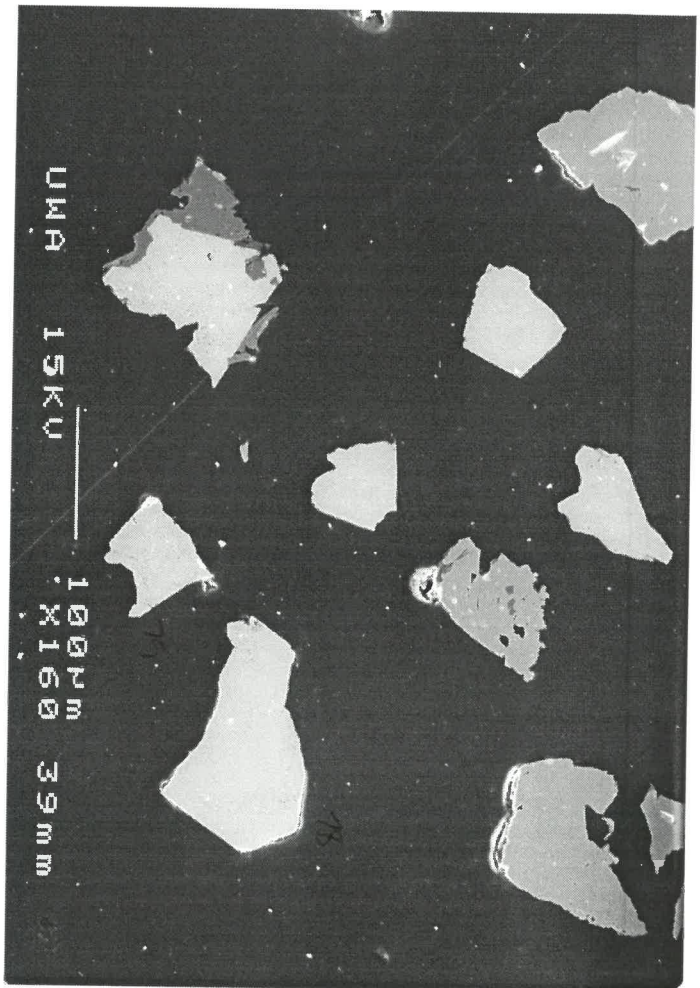
676

726

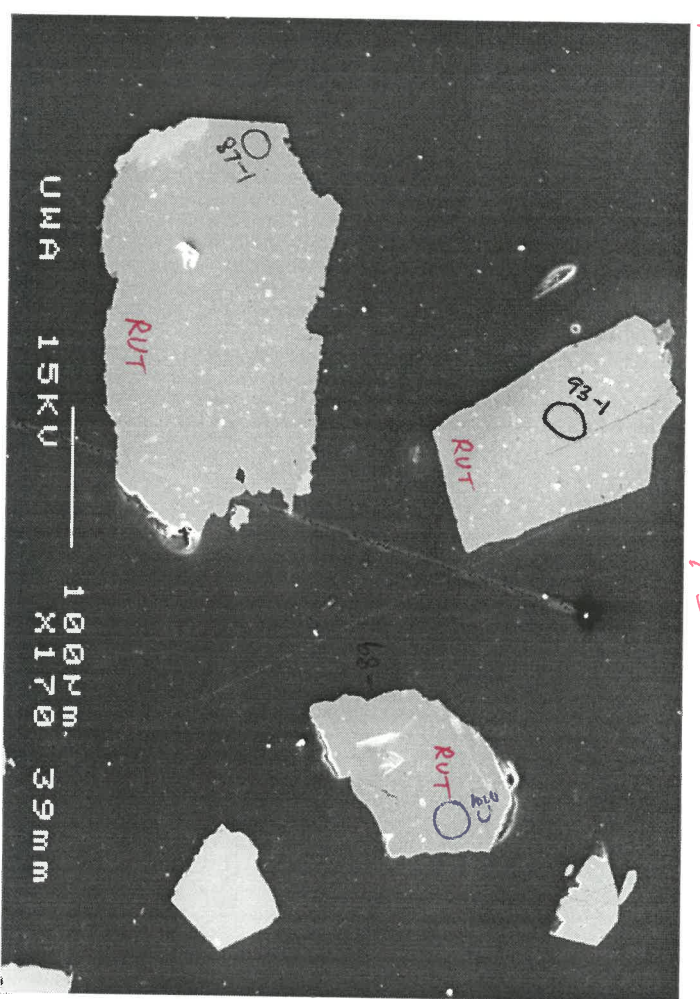
784



785

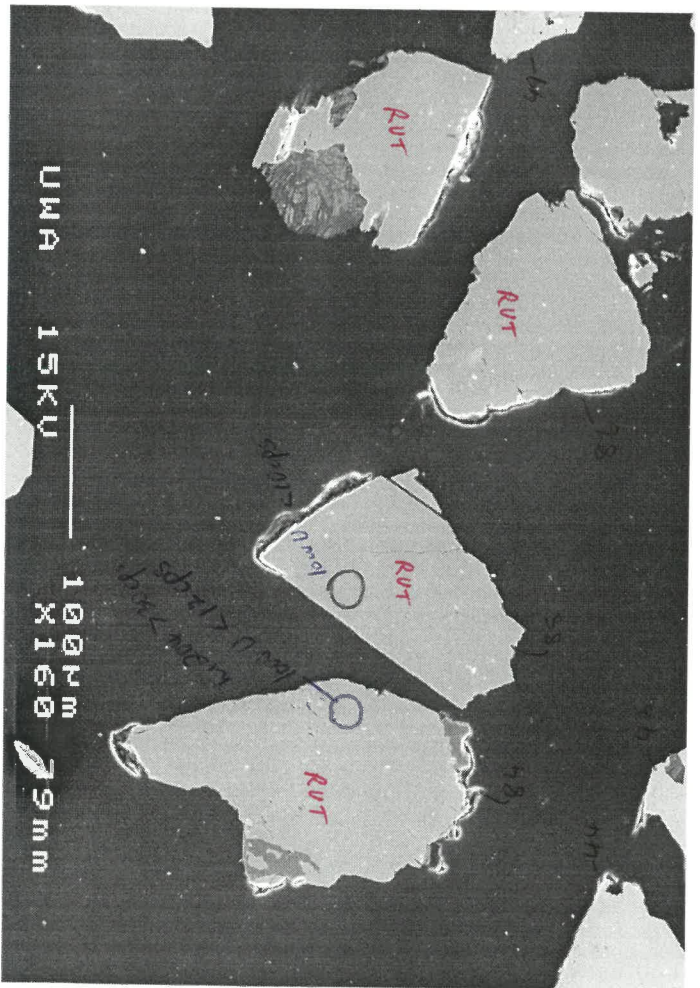


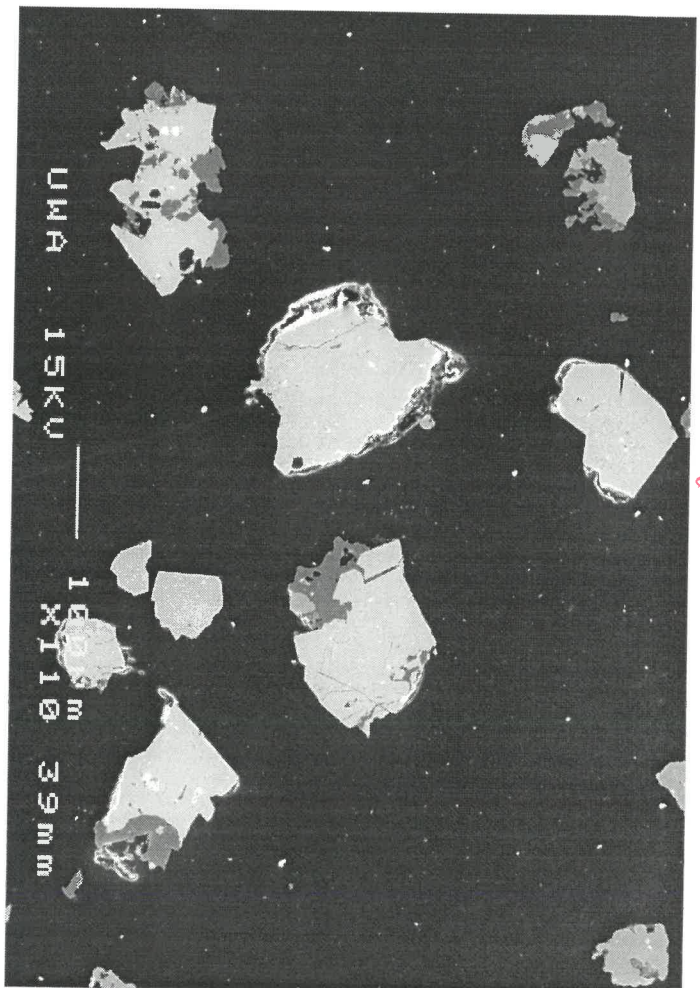
869



875

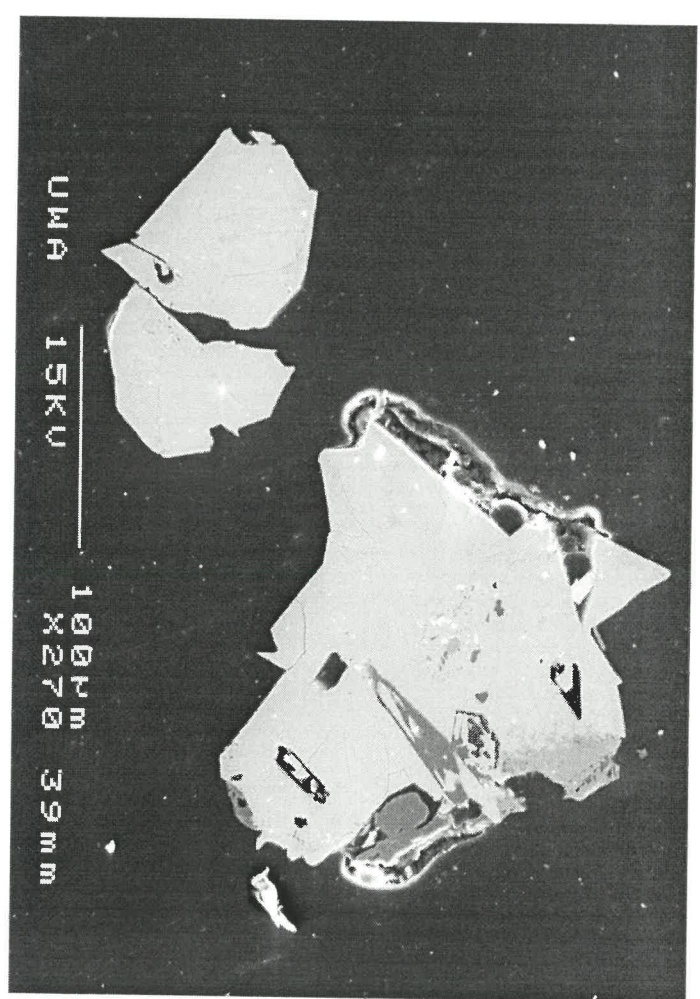
8485



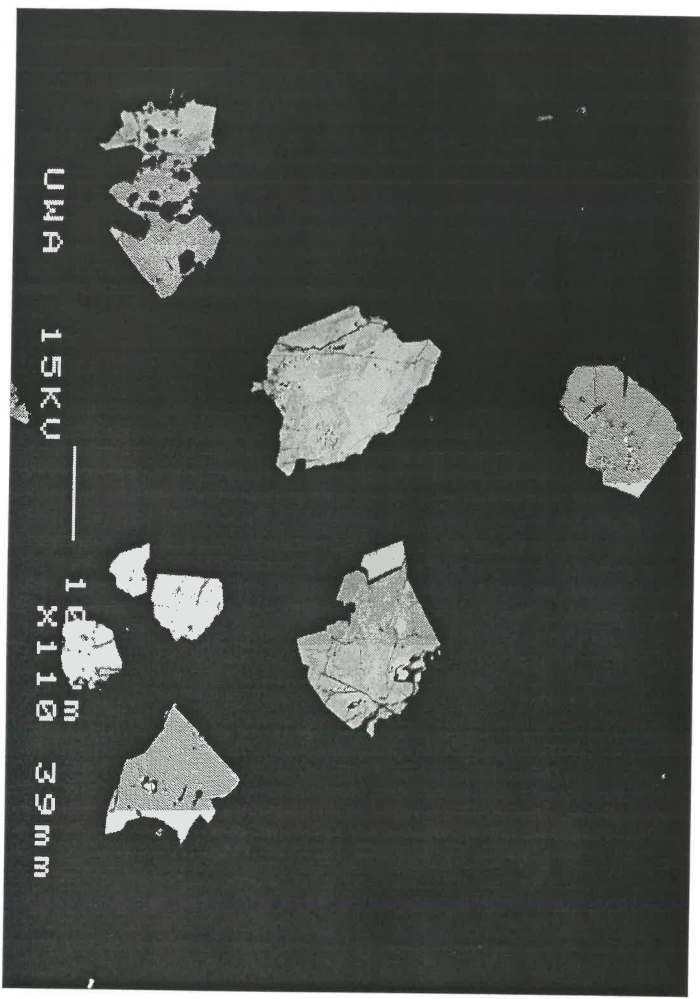


q05

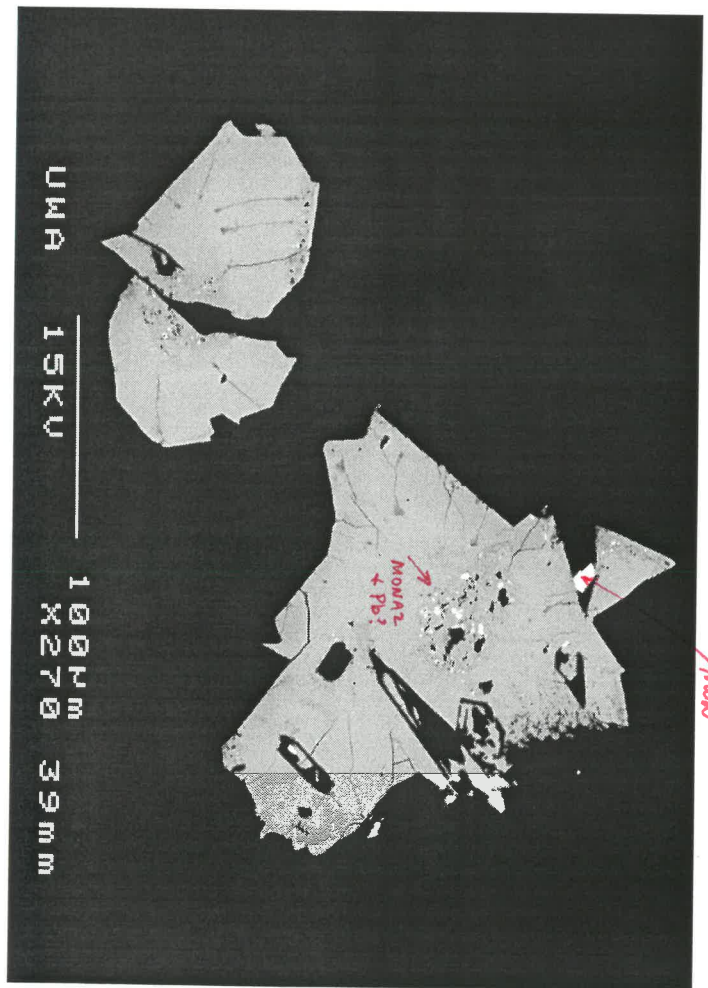
c69



q15

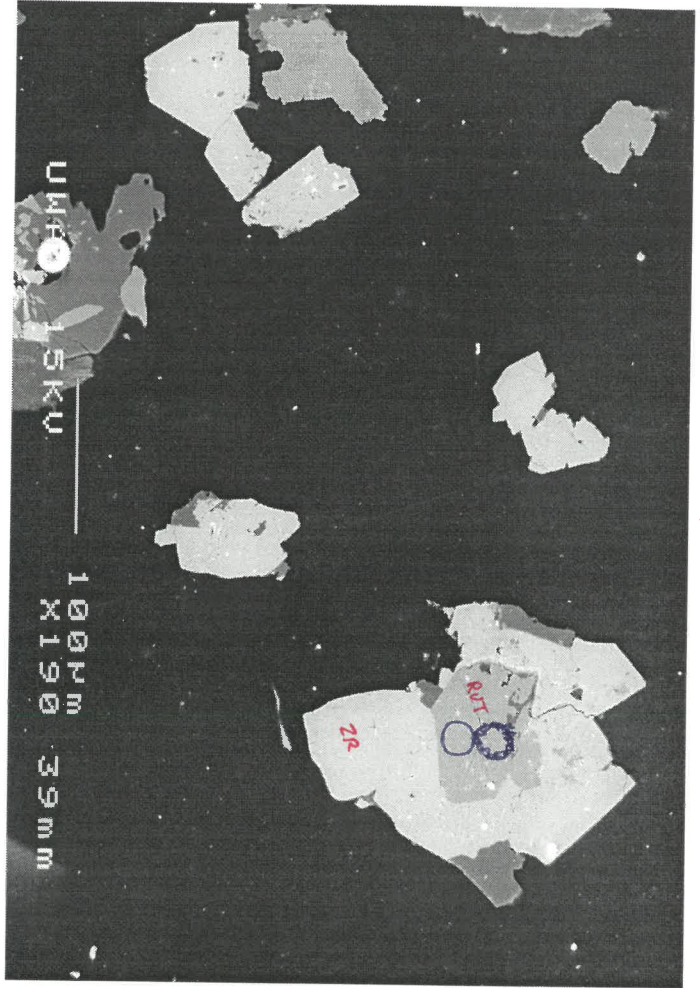


q06



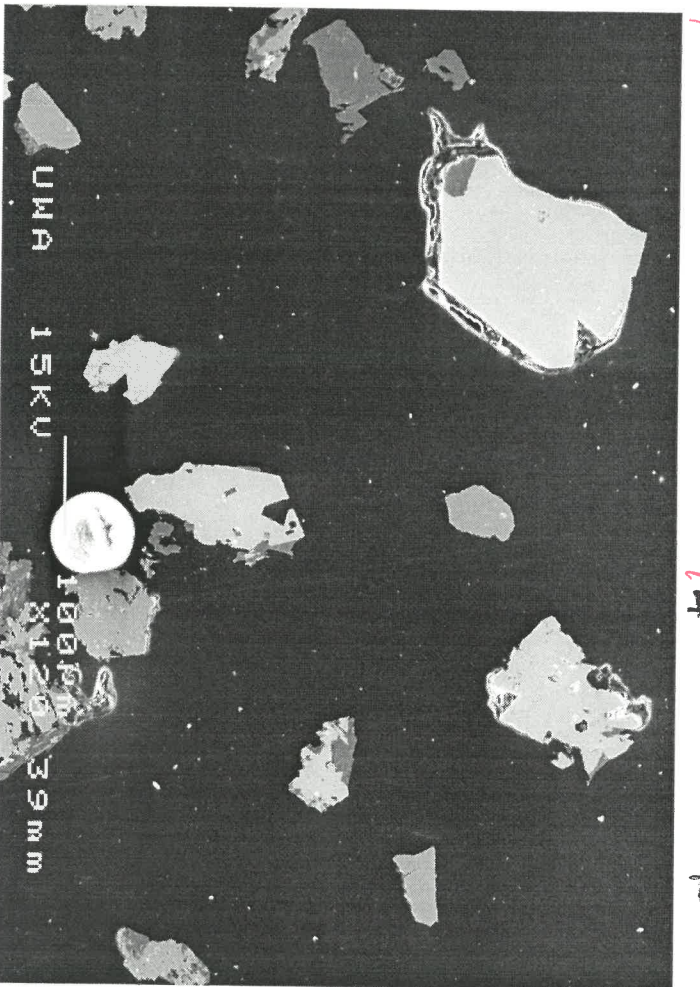
q16

MoA



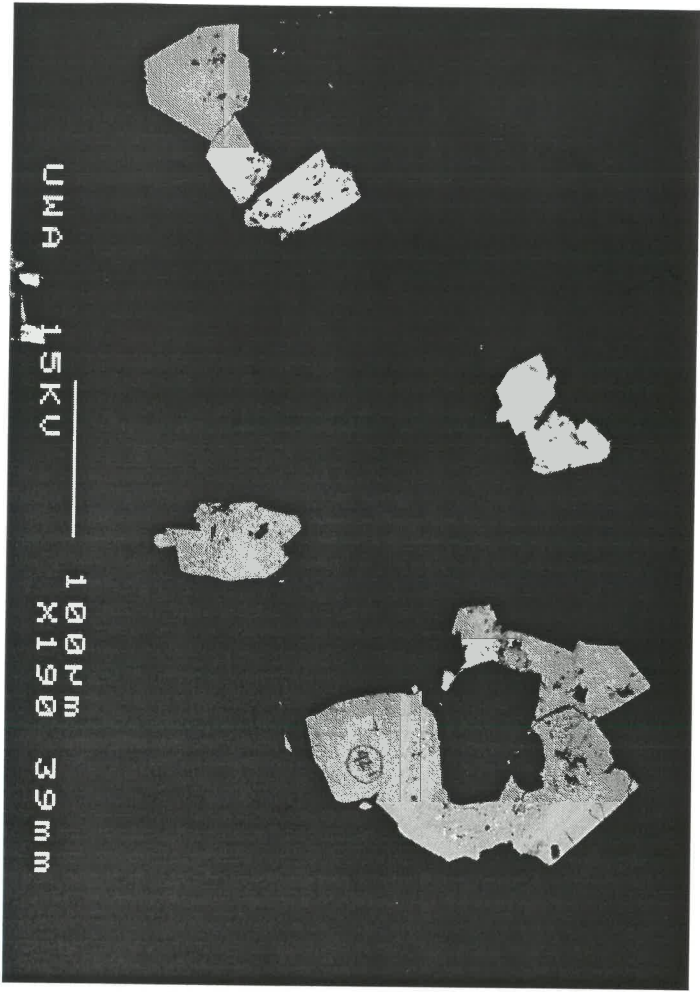
925

c69

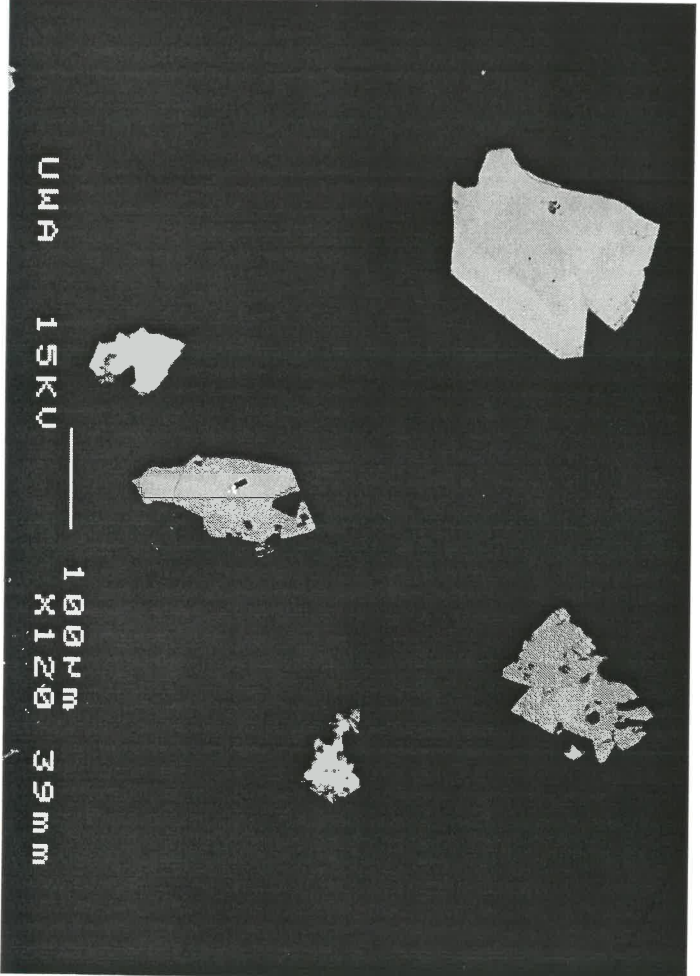


945

~~945~~



926



936