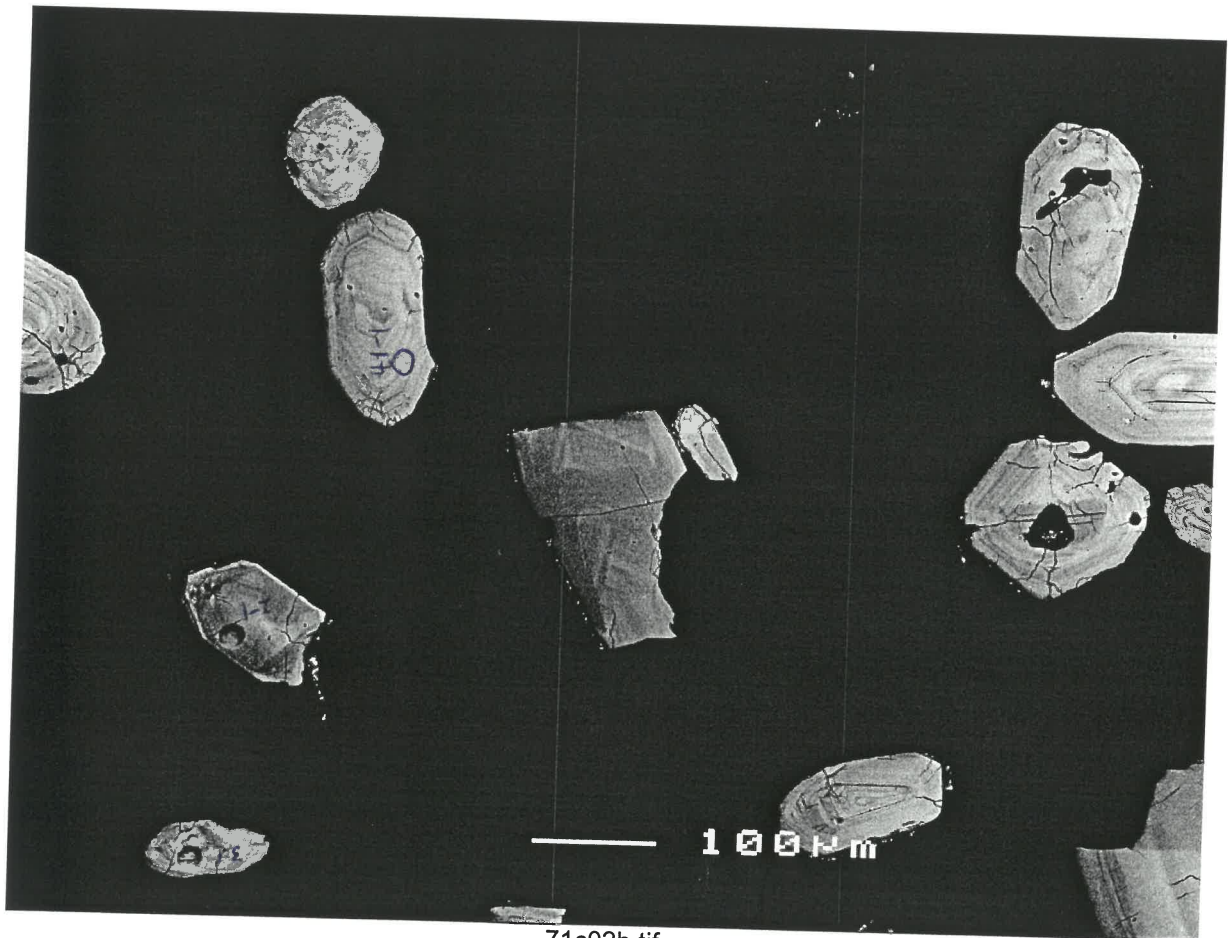


upside down.

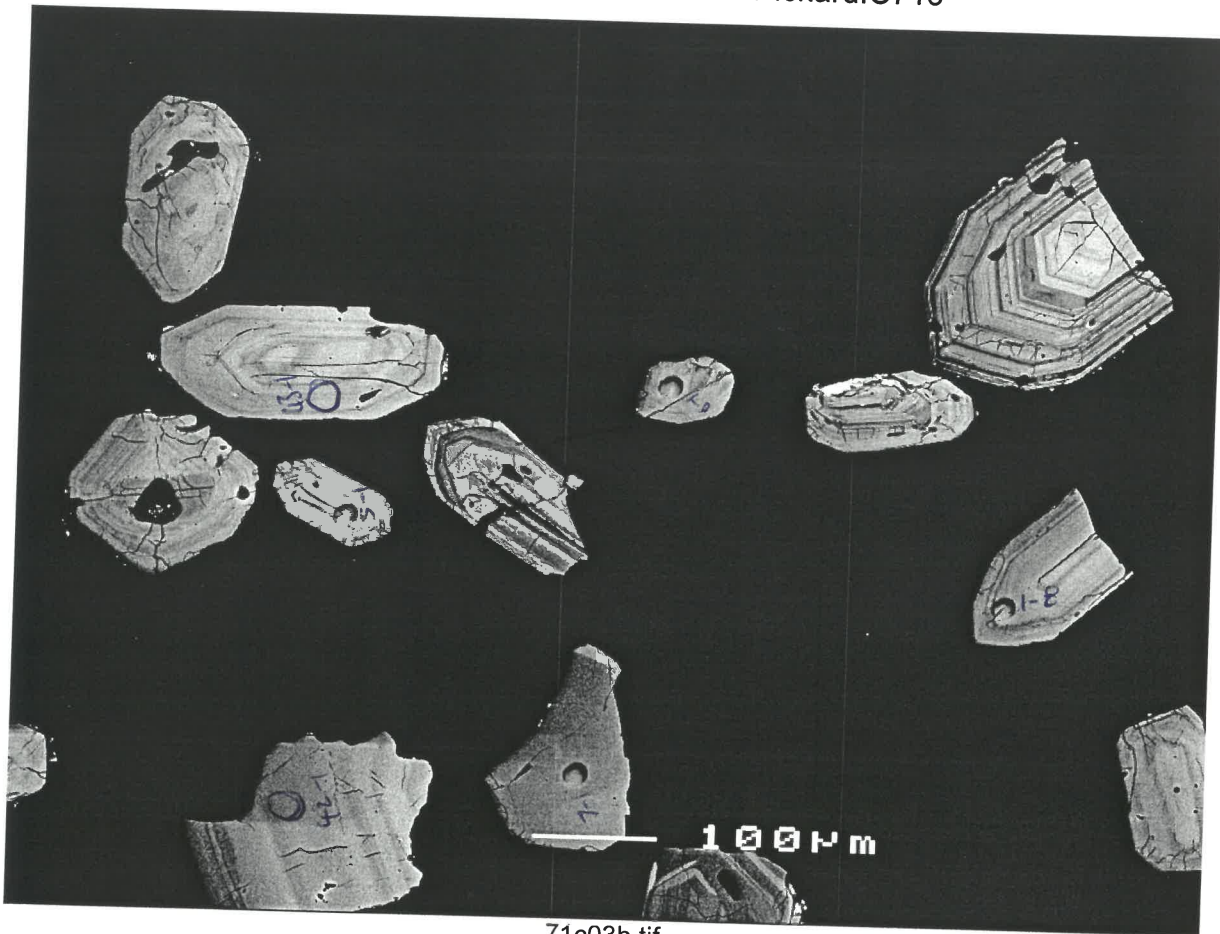
71c01b.tif

ph 129/
180



71c02b.tif

ph 181-183



ph 183 / 185

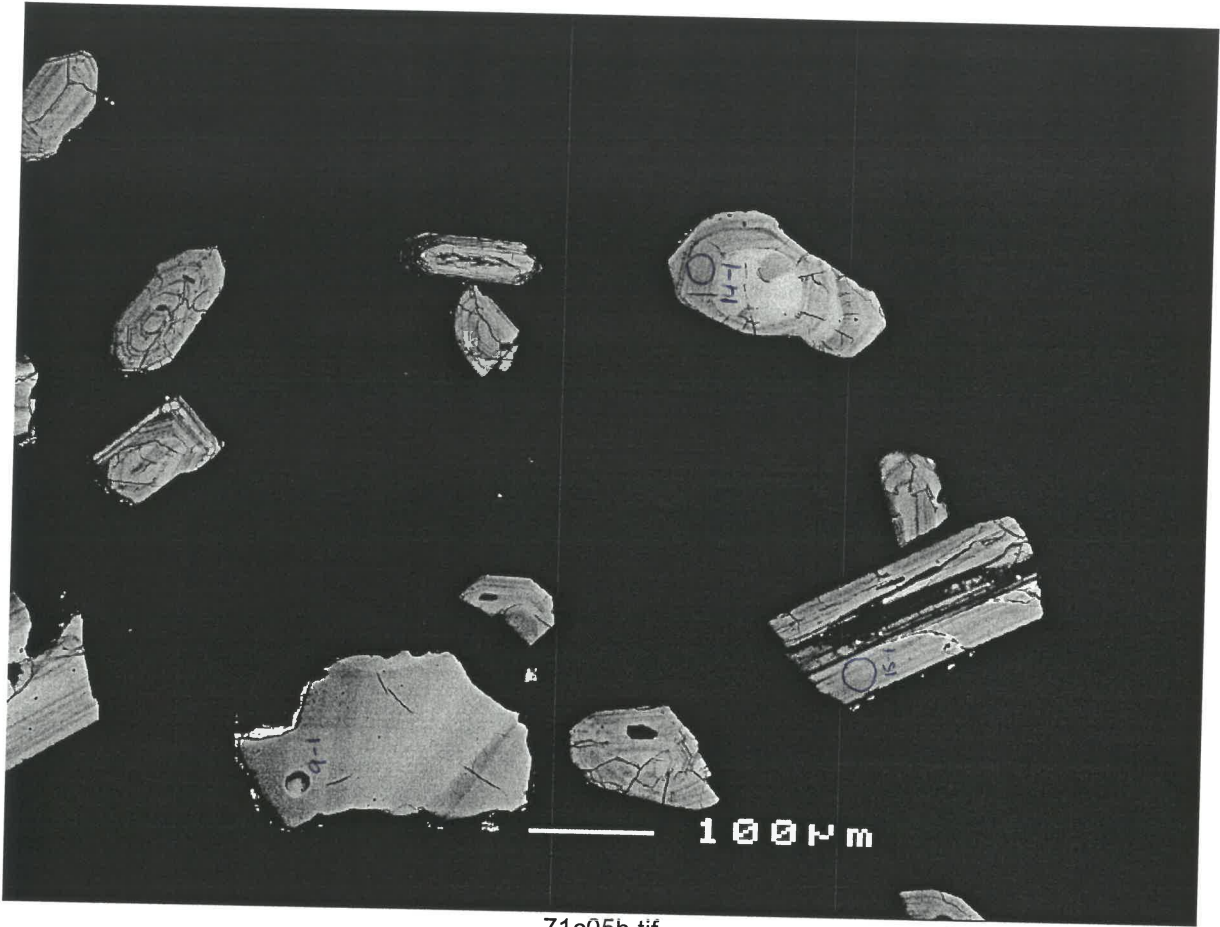
71c03b.tif



187-189

71c04b.tif

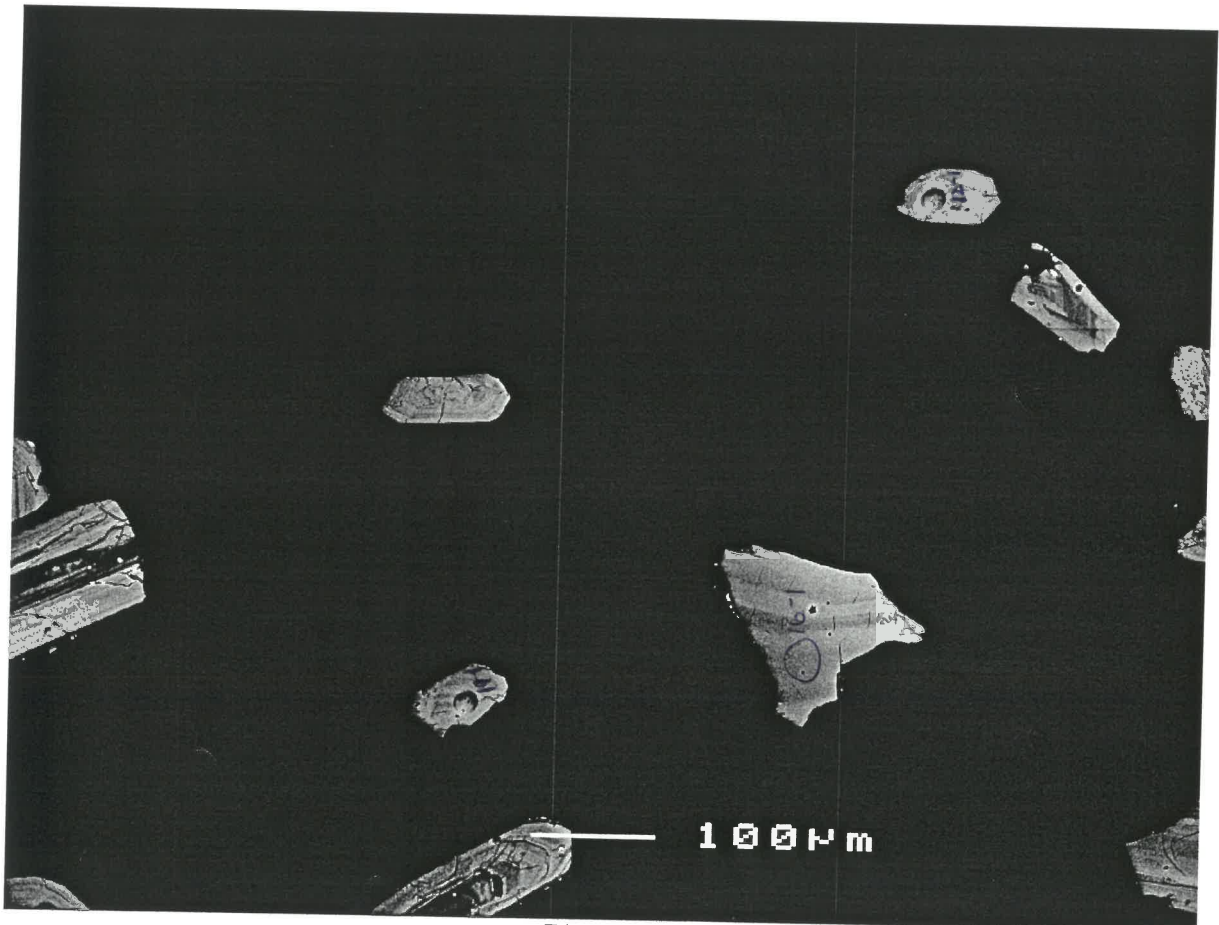
4-1



ph 18A-19A

#10

71c05b.tif



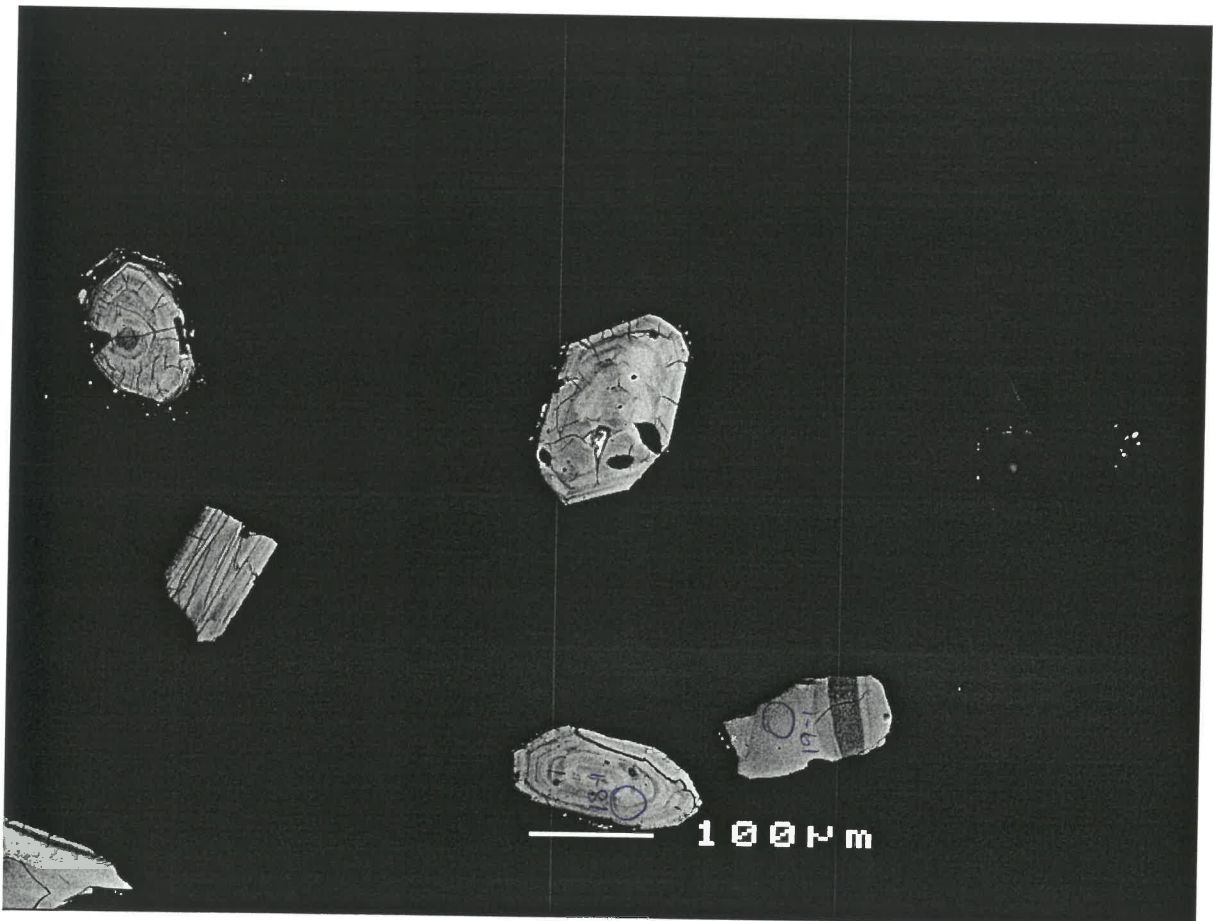
ph 19B-19C

71c06b.tif



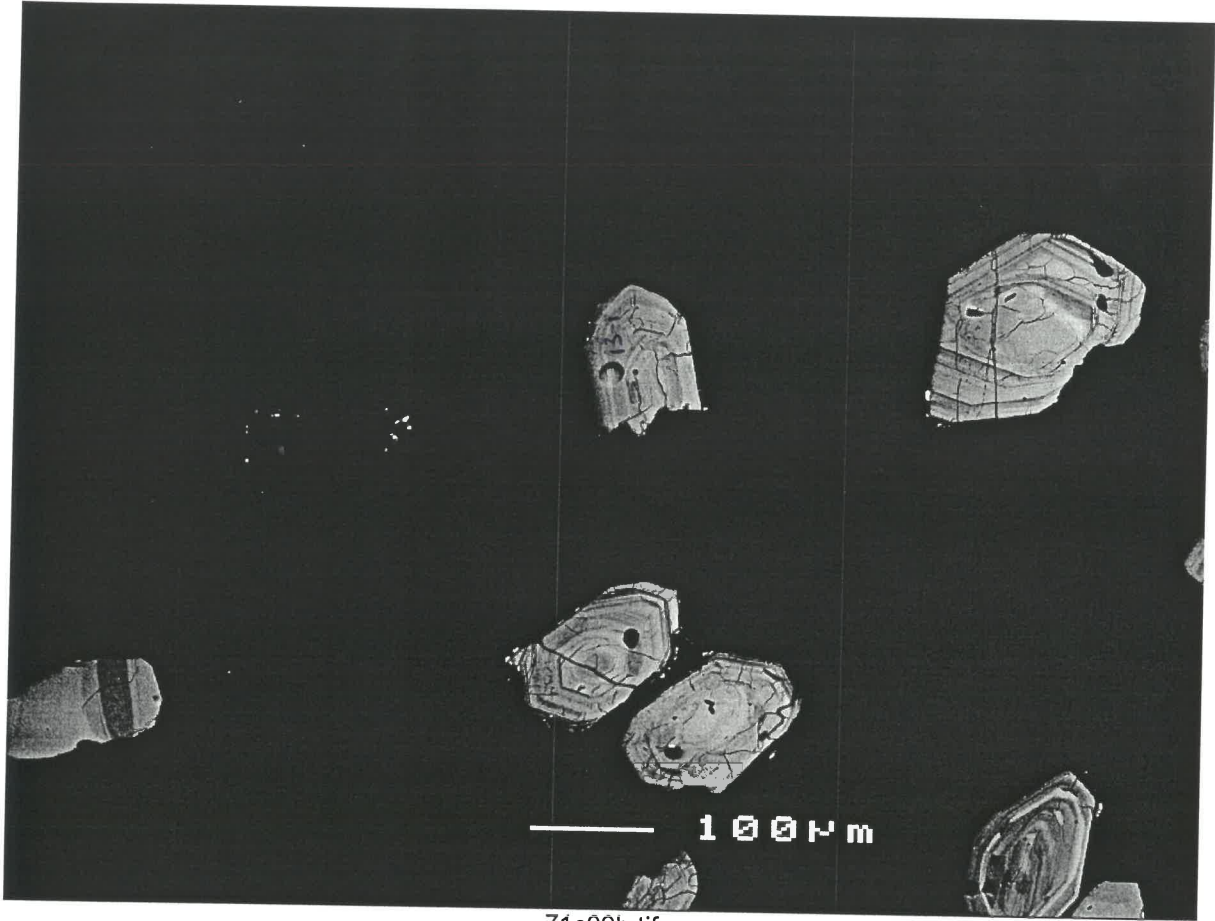
71c07b.tif

ph 197-199

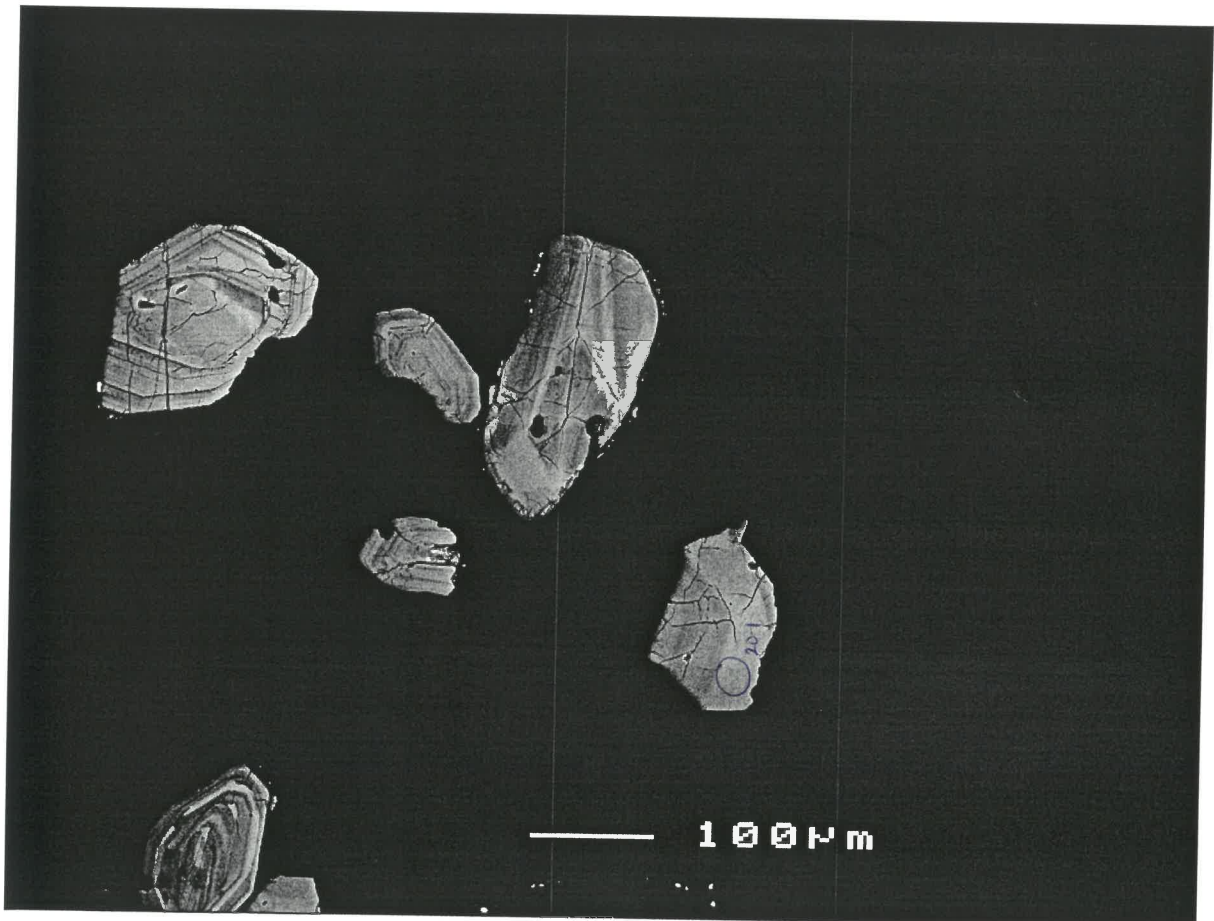


71c08b.tif

ph 201



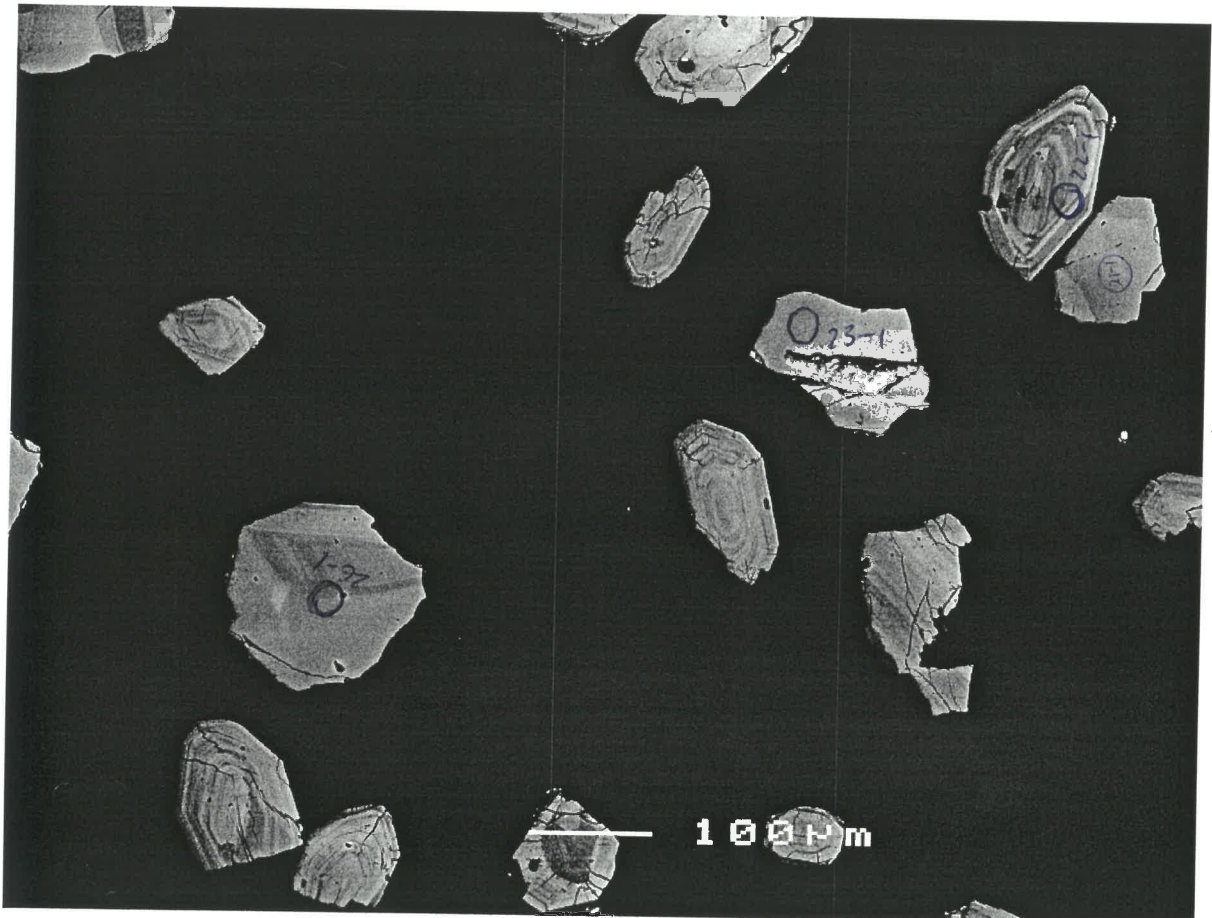
71c09b.tif



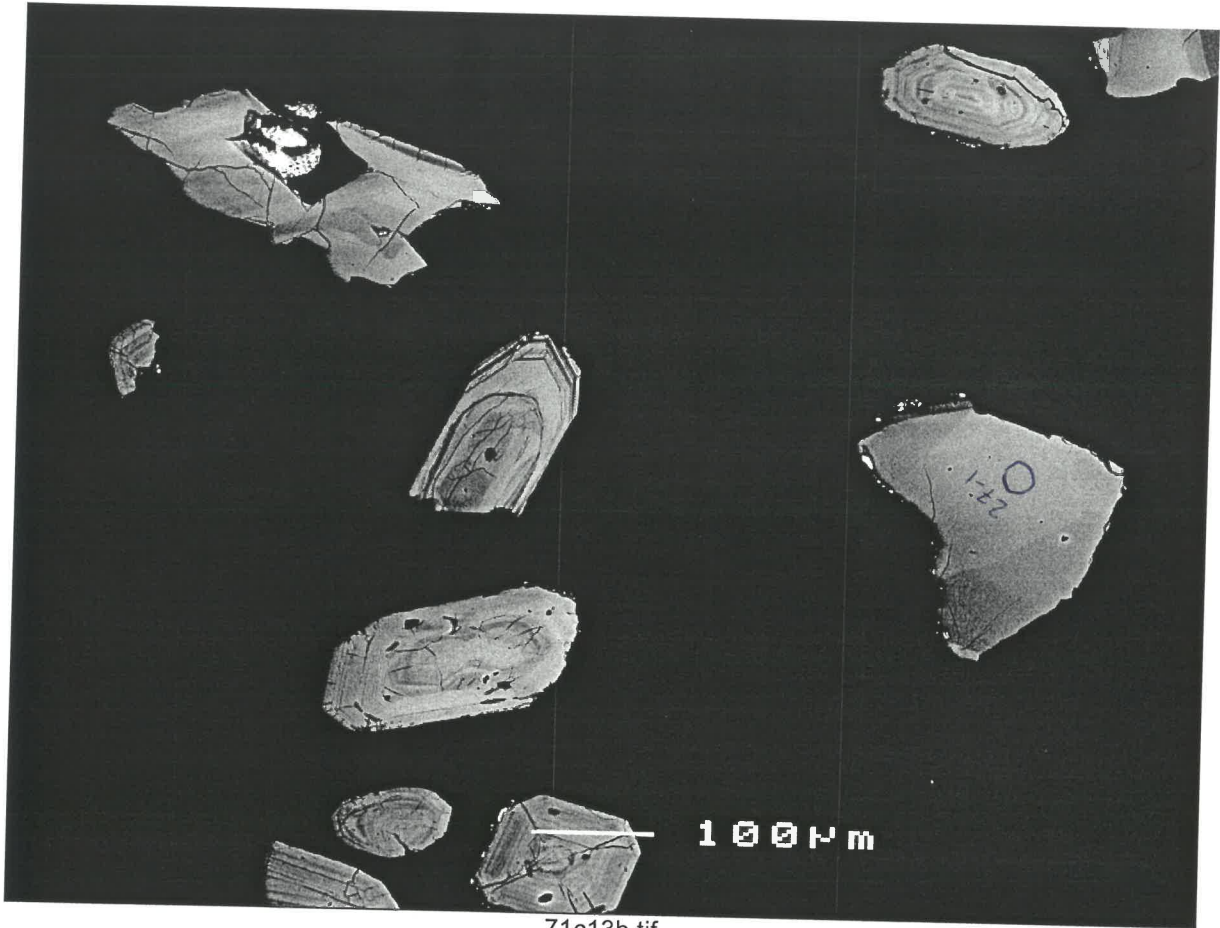
71c10b.tif



71c11b.tif

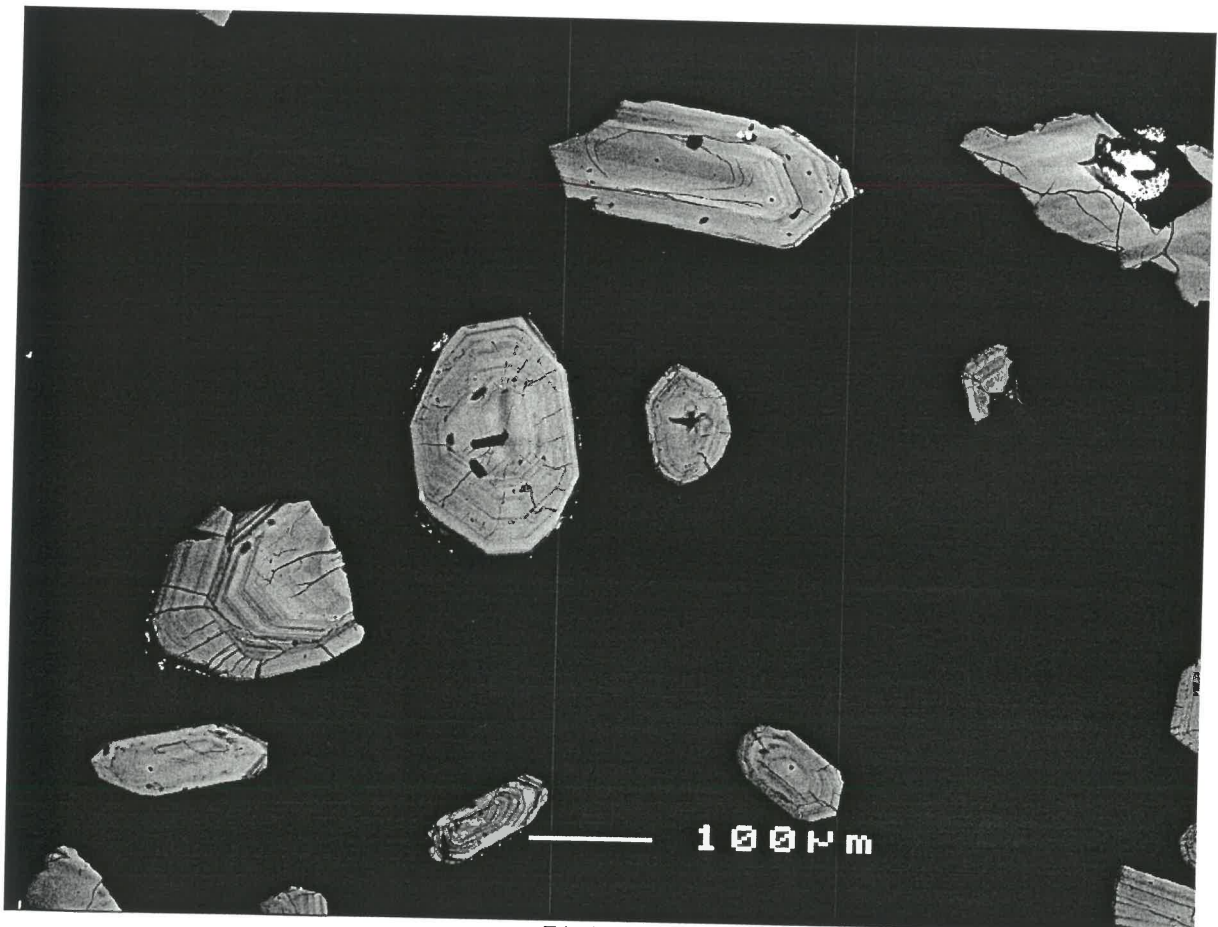


71c12b.tif



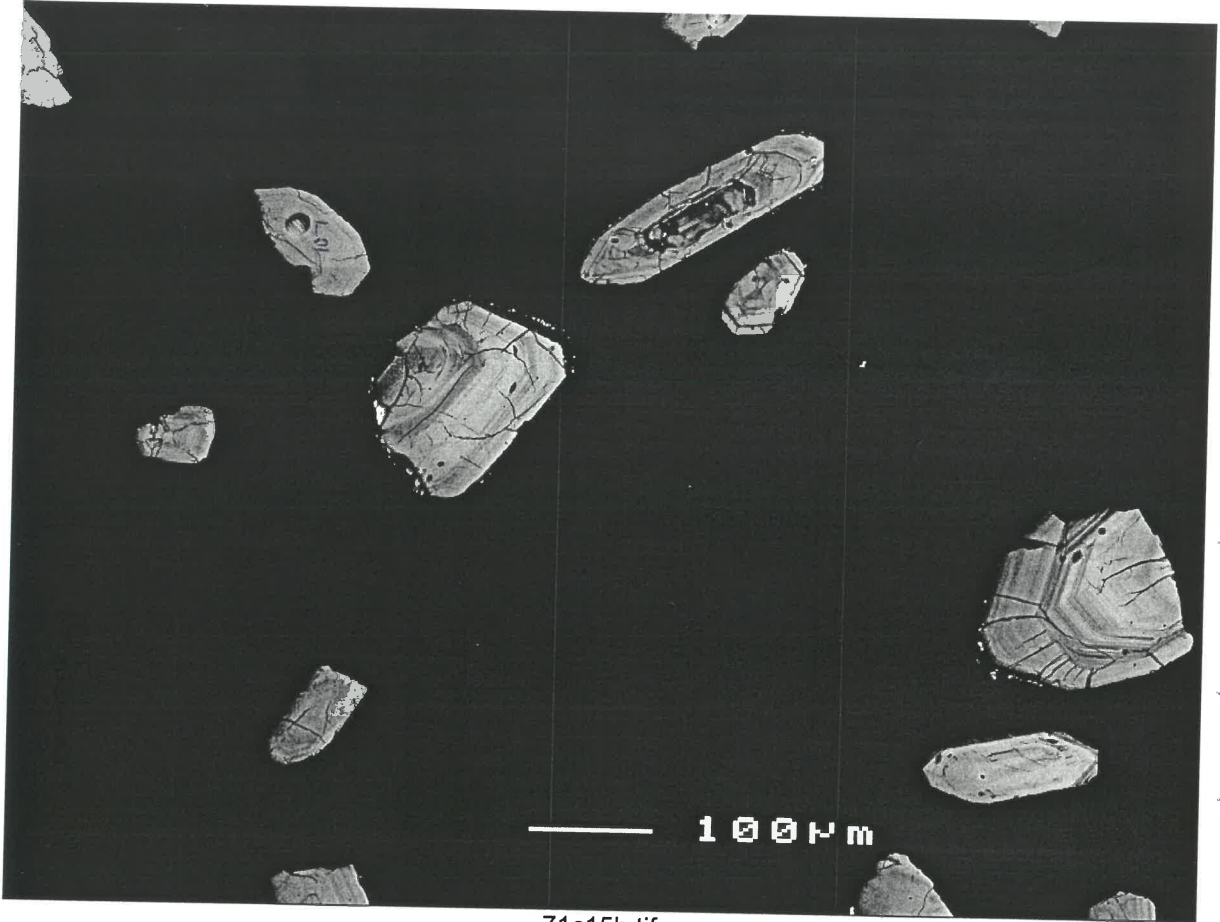
71c13b.tif

ph 199 - 217



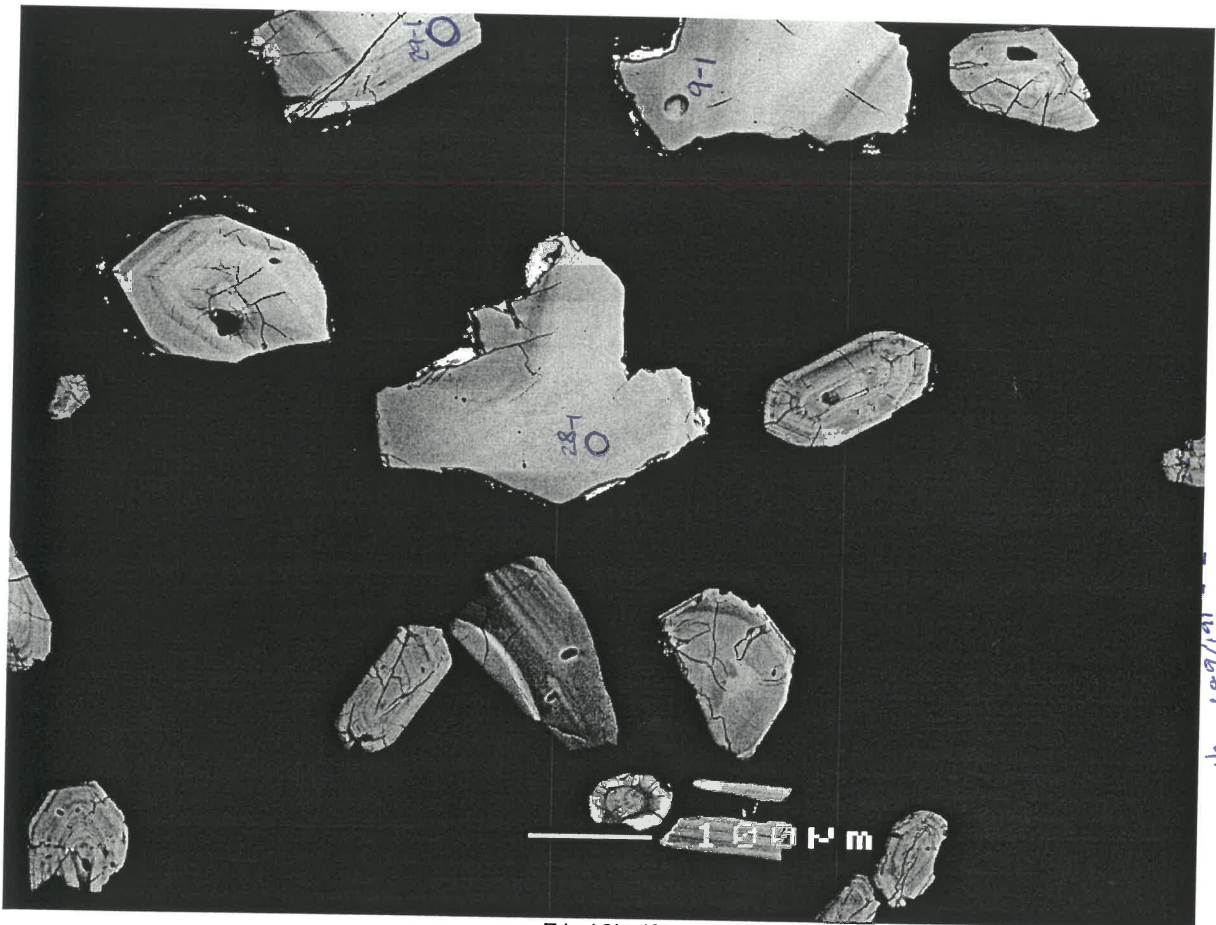
71c14b.tif

ph 195/197 - 221/219



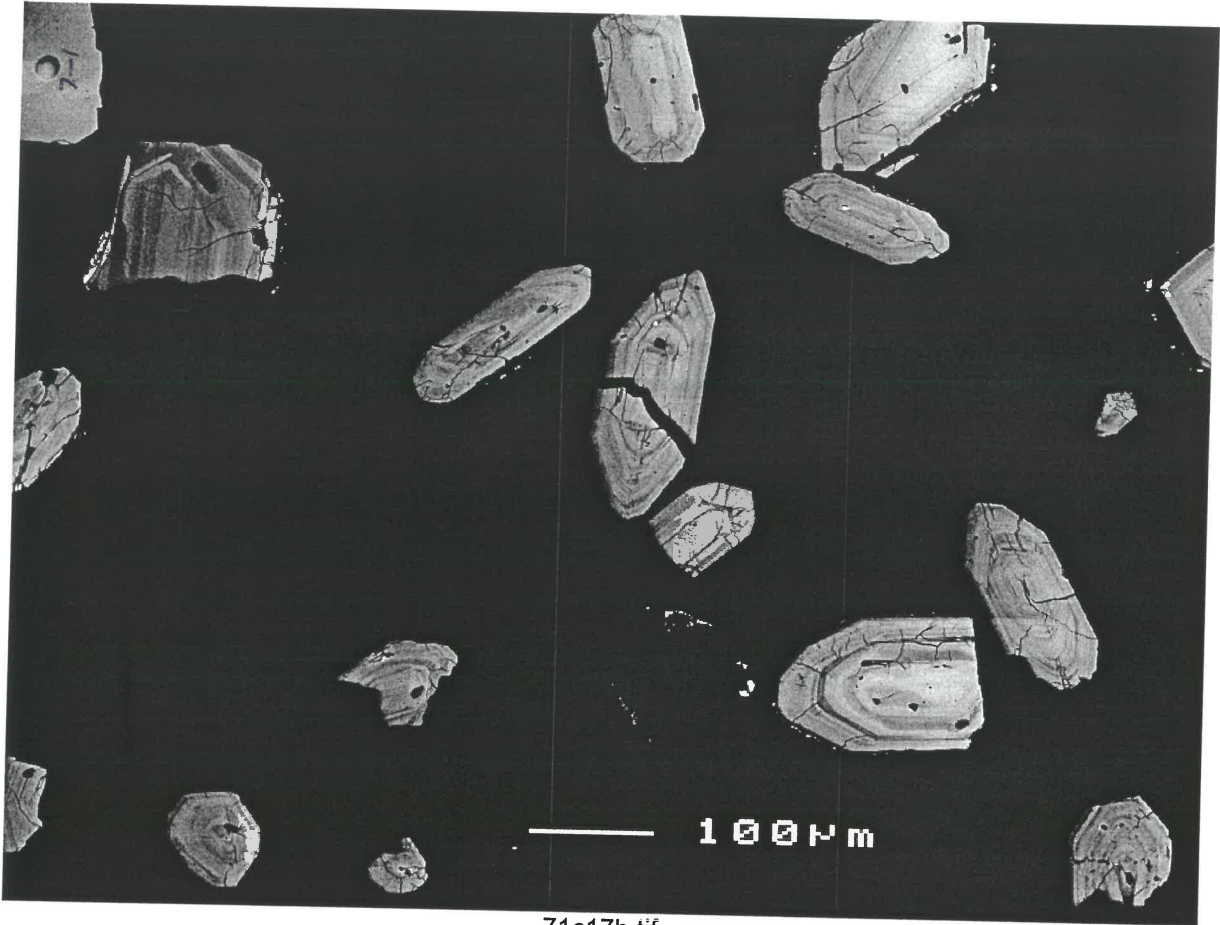
ph 193/195 - 223/221

71c15b.tif



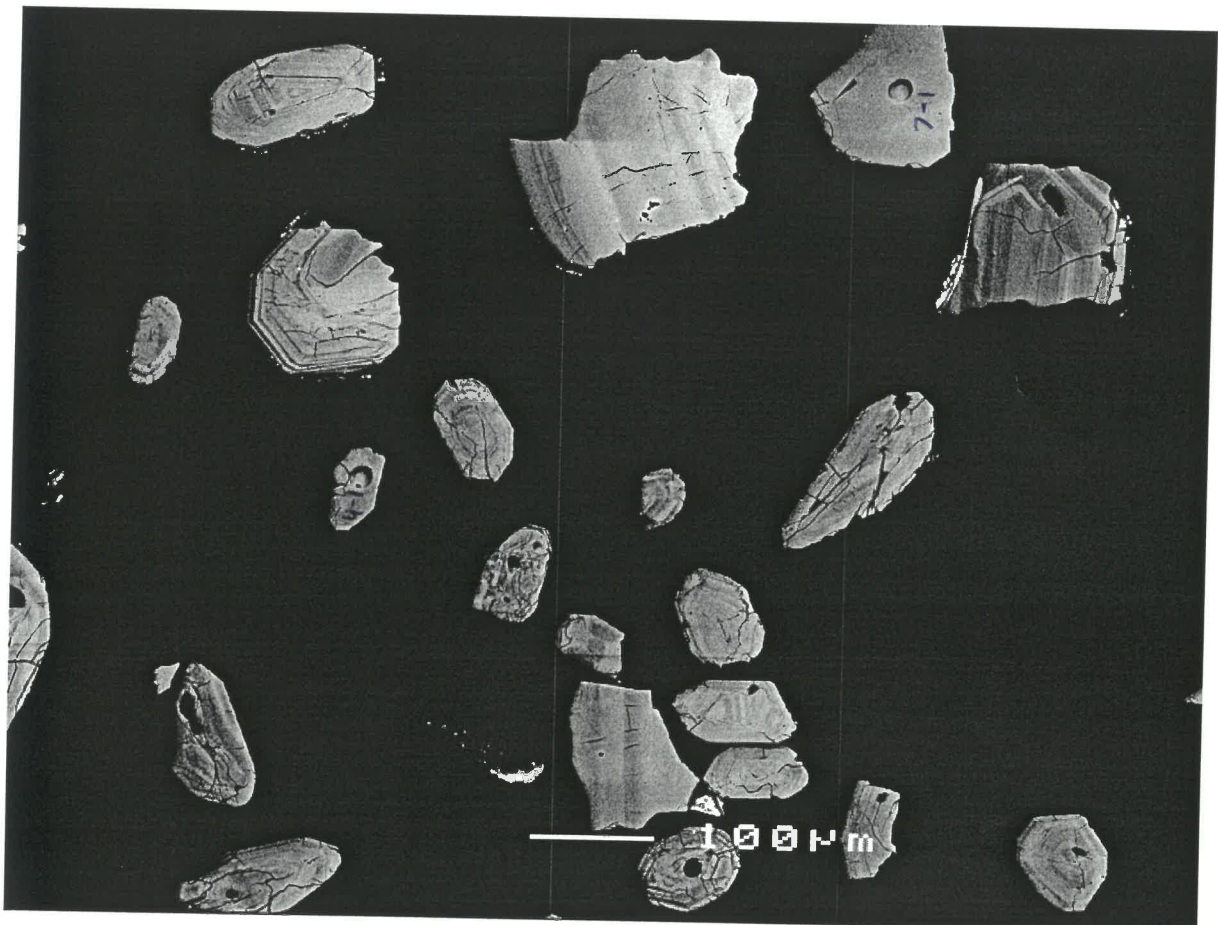
ph 187/191 - 228/226

71c16b.tif



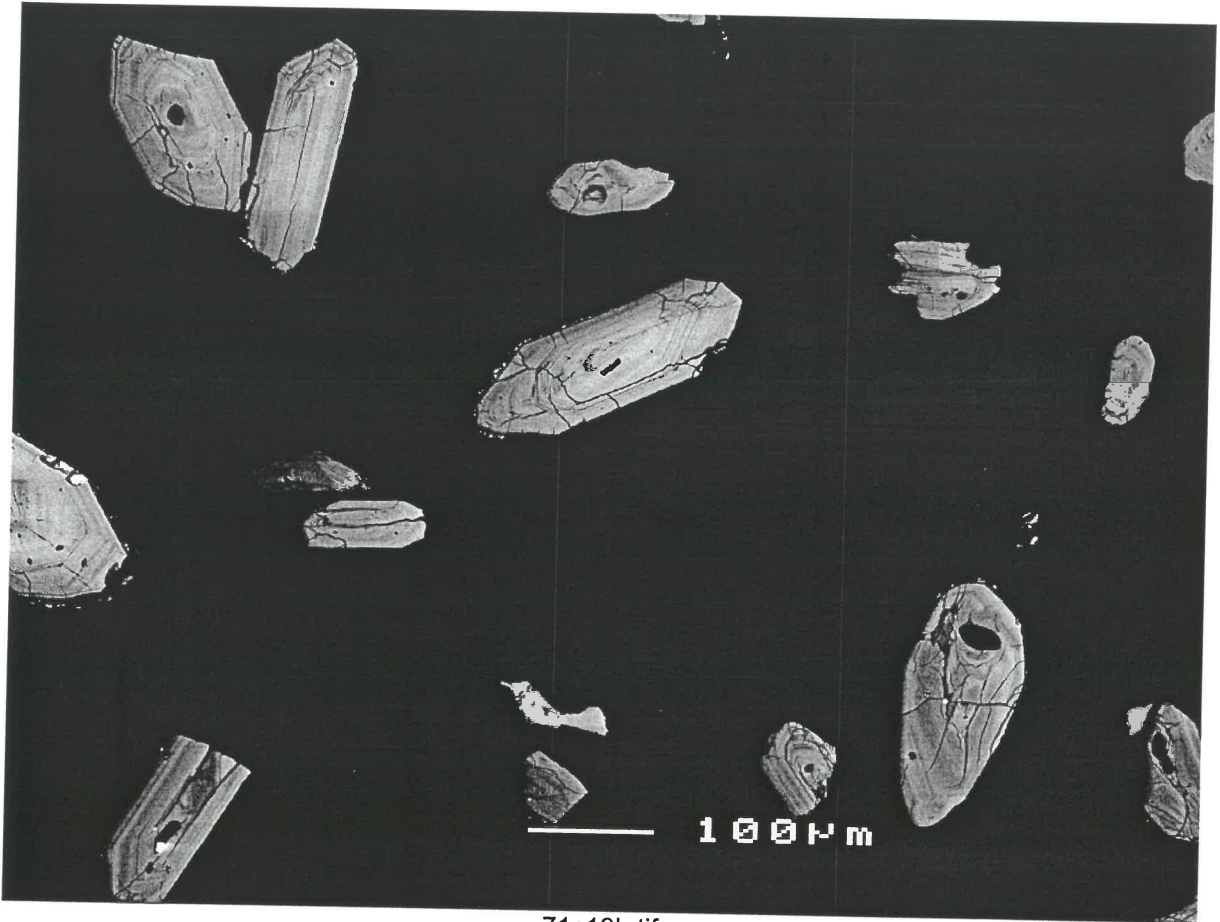
185/187 - 232/230.

71c17b.tif



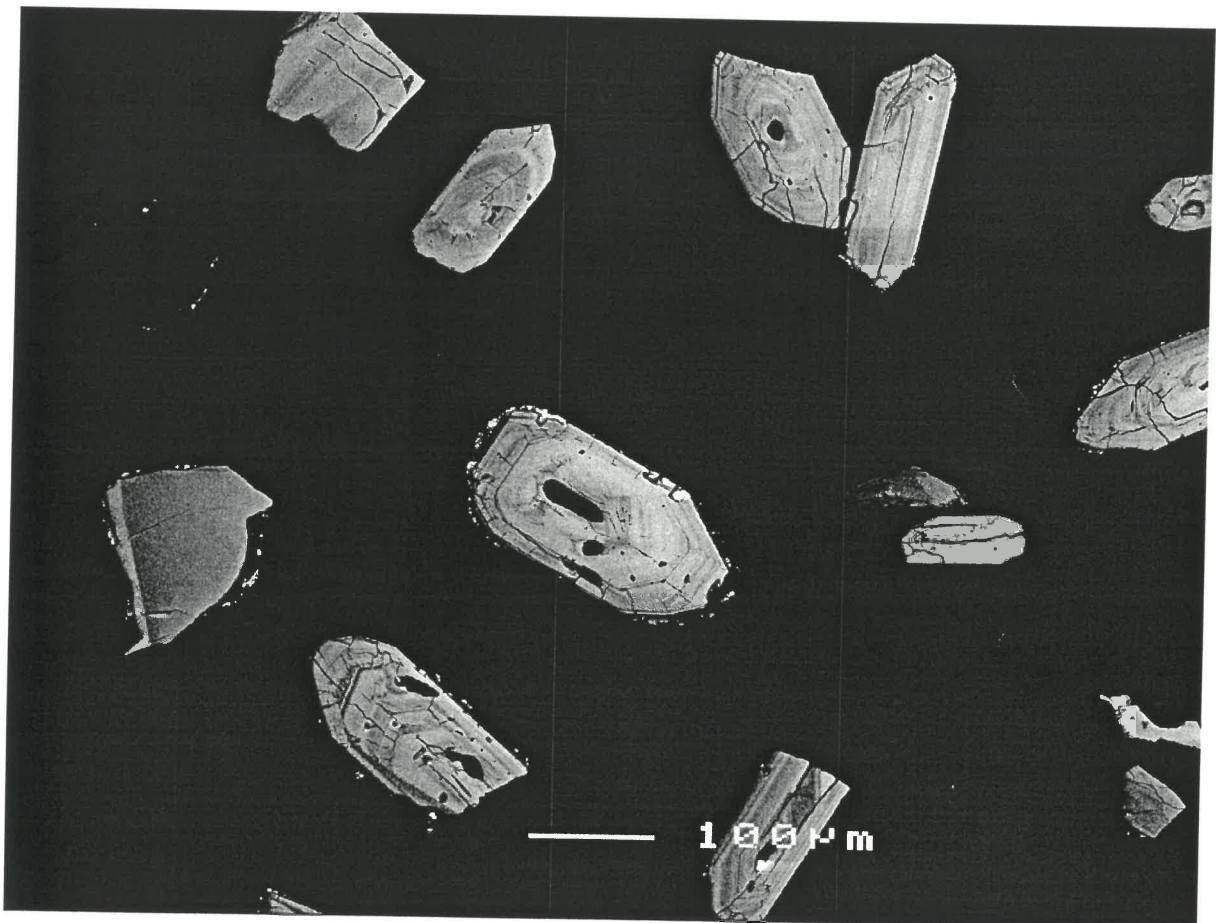
183/185 - 234/232

71c18b.tif



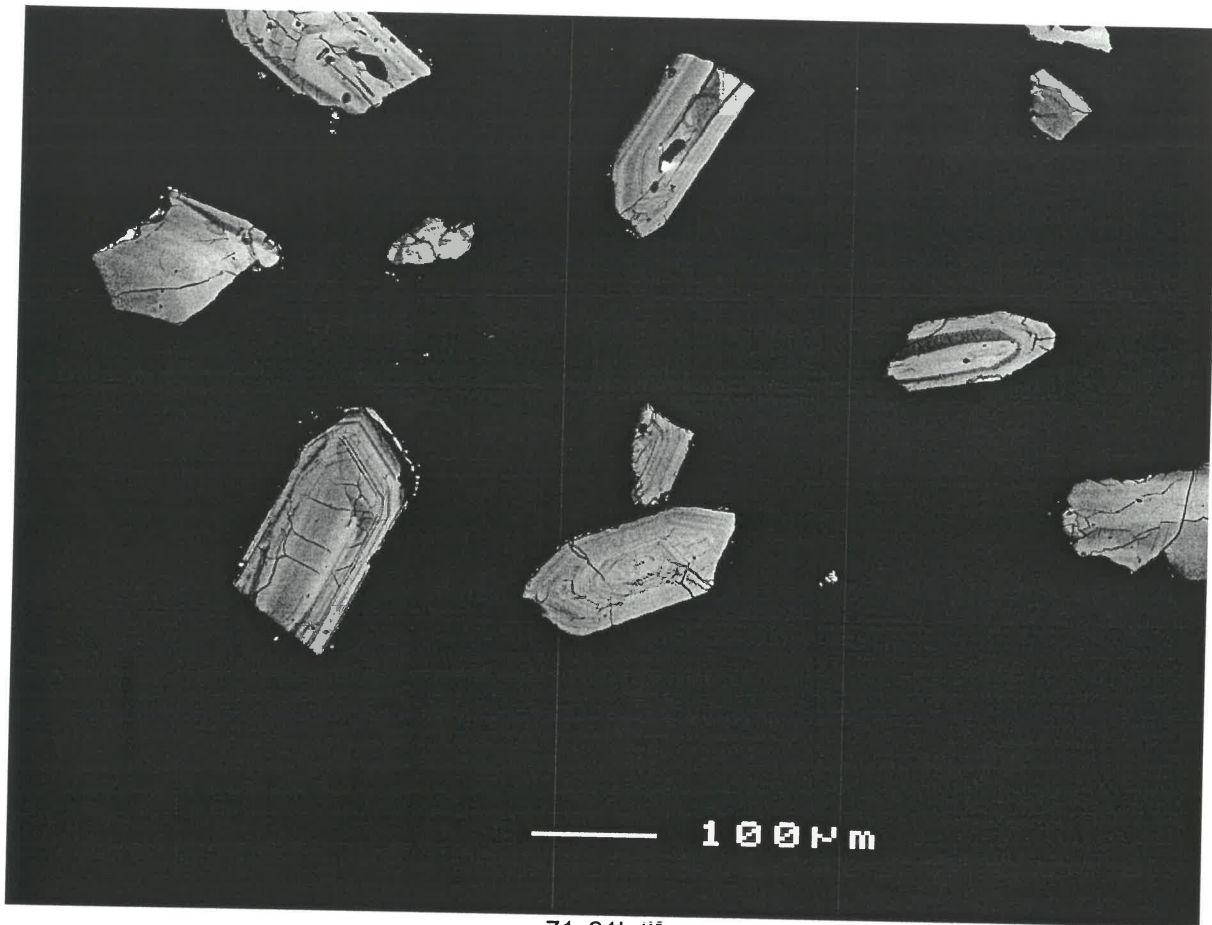
71c19b.tif

181 - 237



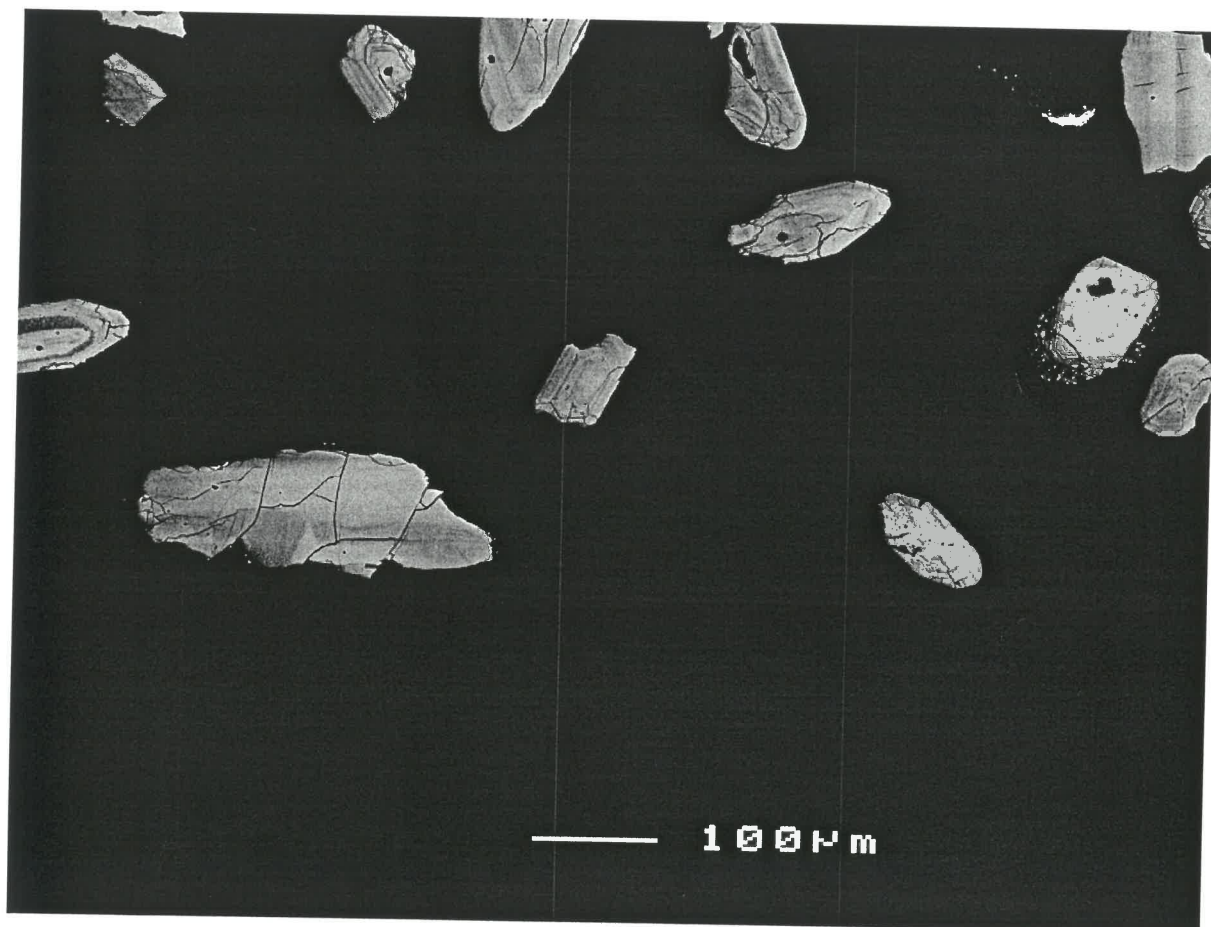
71c20b.tif

179 - 239



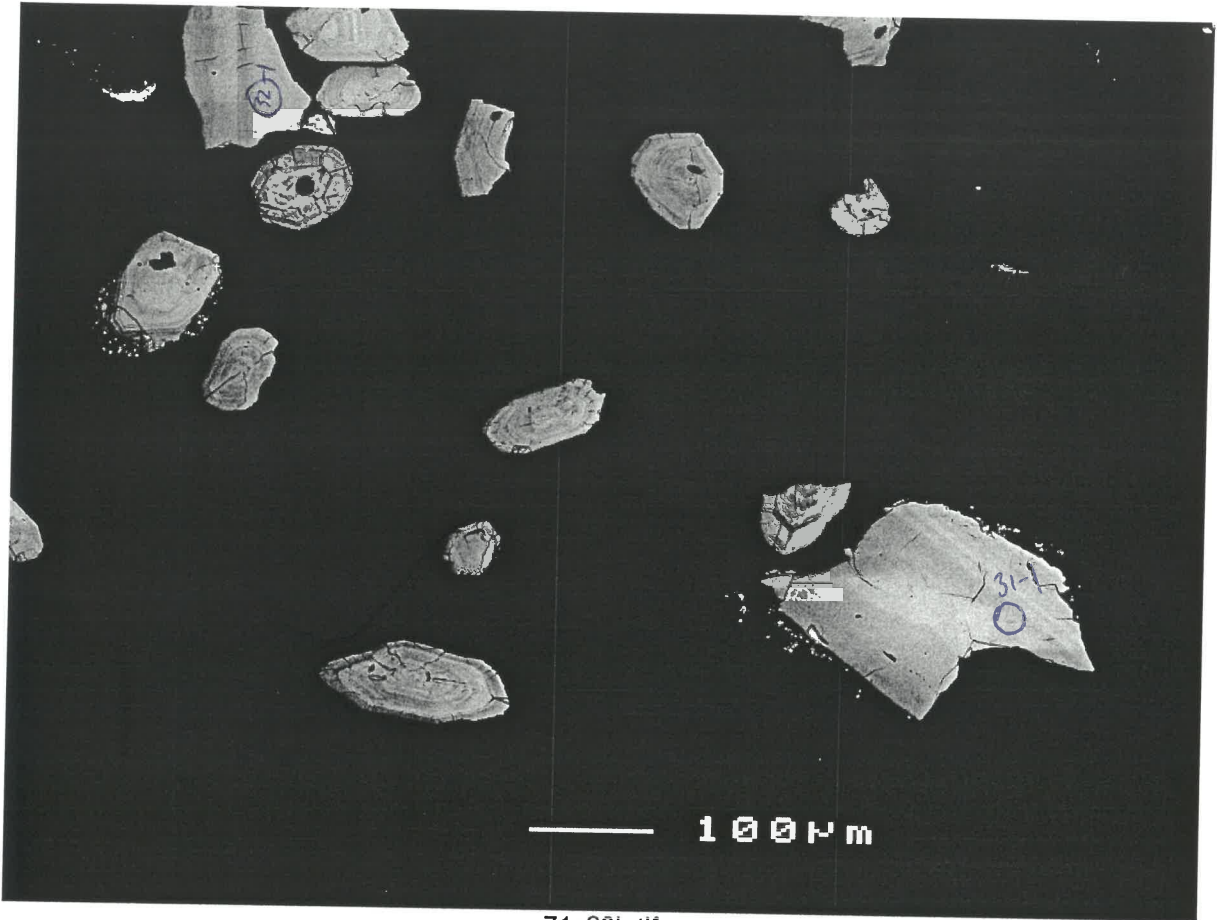
239 - 237

71c21b.tif



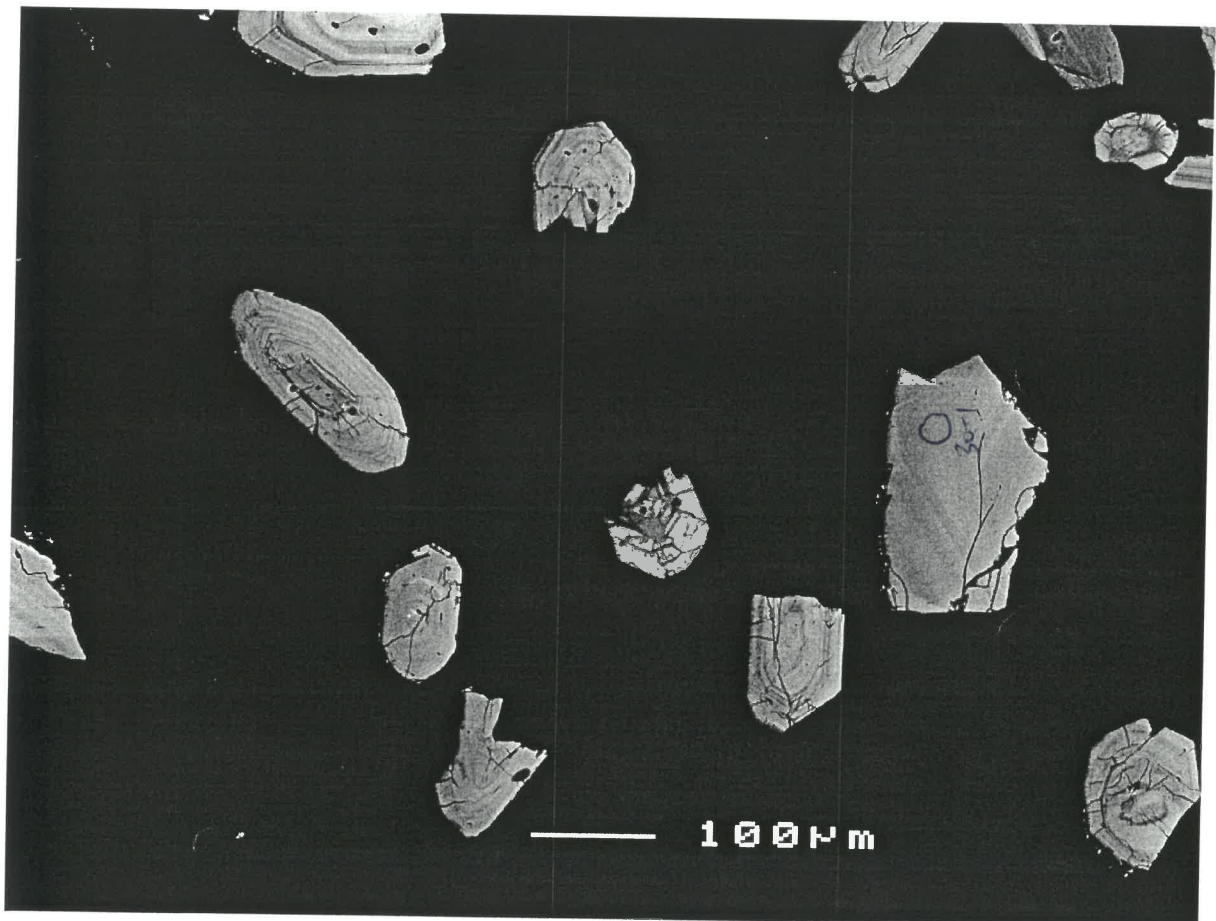
* 237 / 234

71c22b.tif



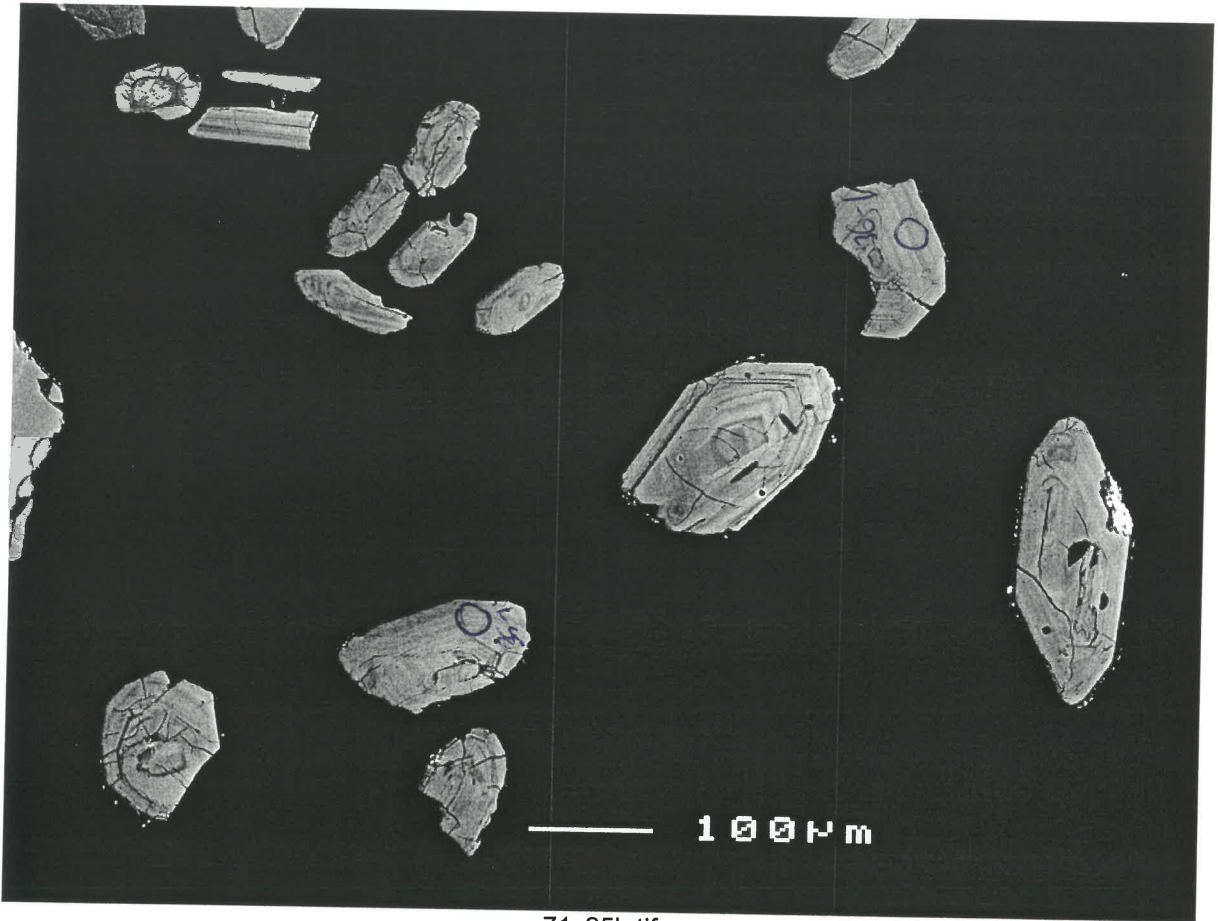
232

71c23b.tif



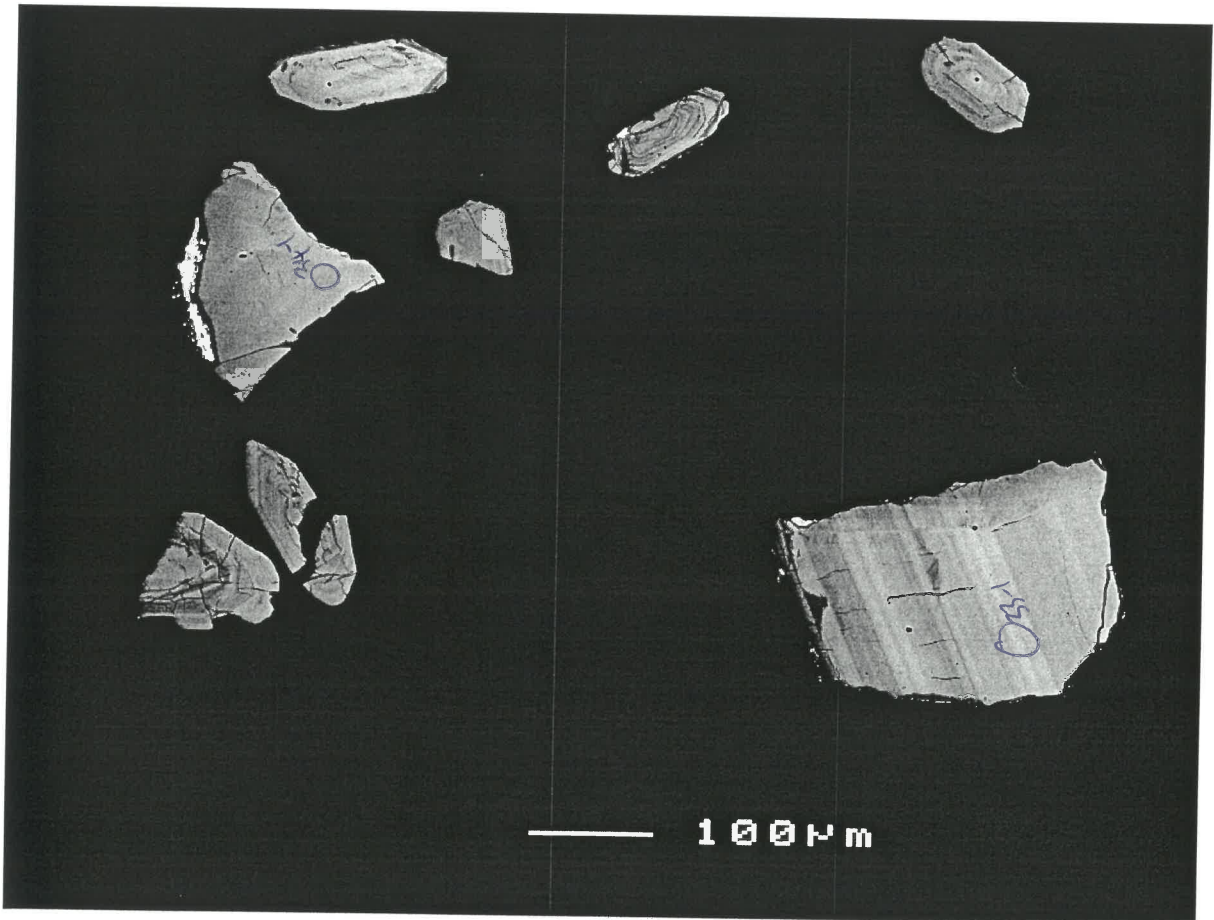
230 ~ 228

71c24b.tif



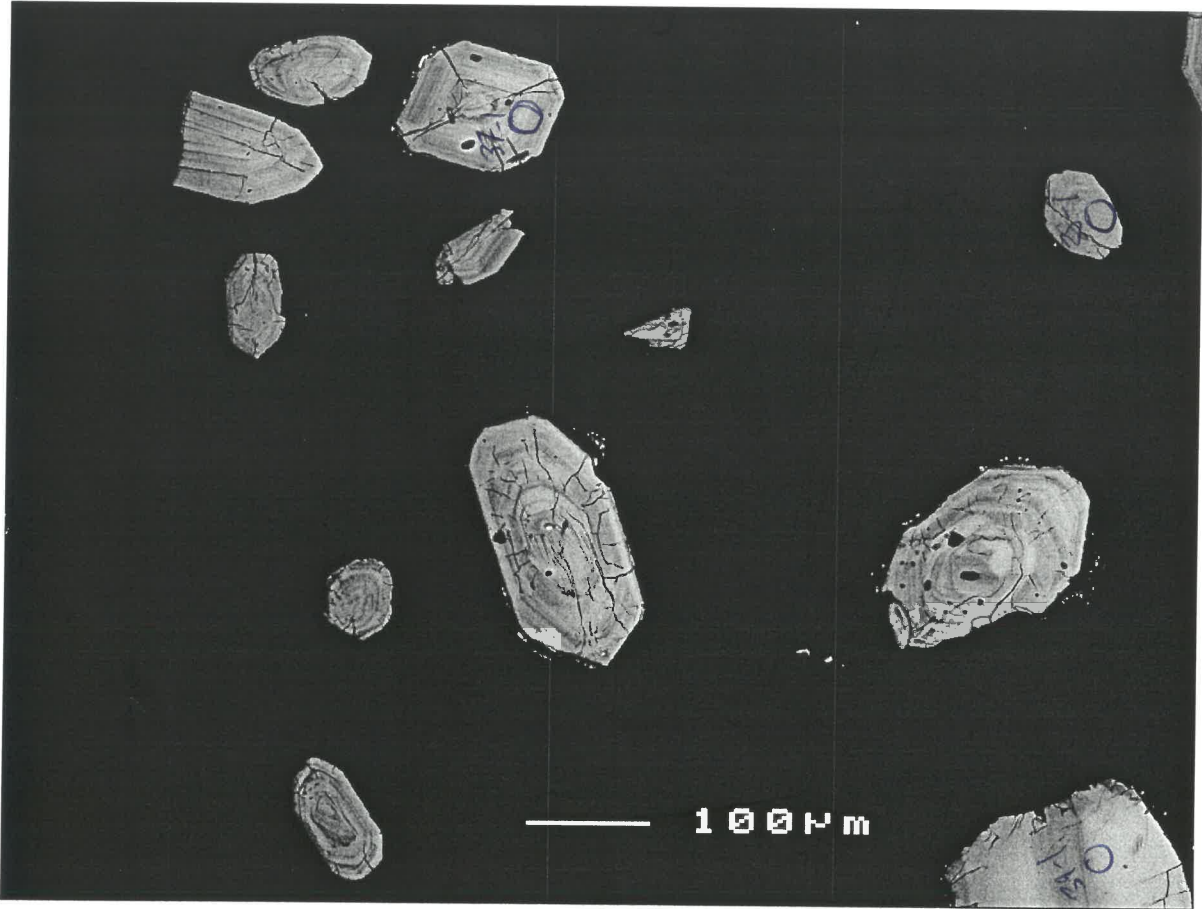
226 - 223

71c25b.tif

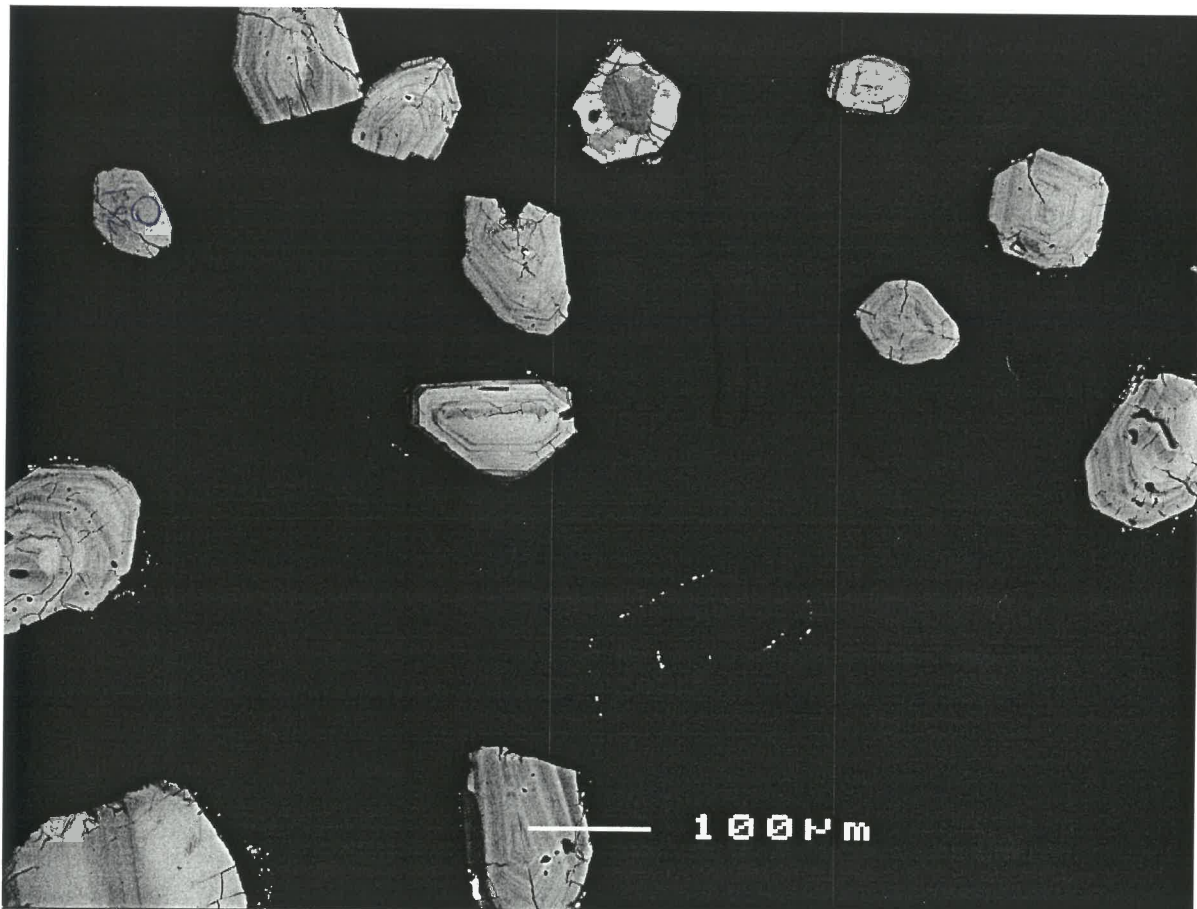


221 - 219

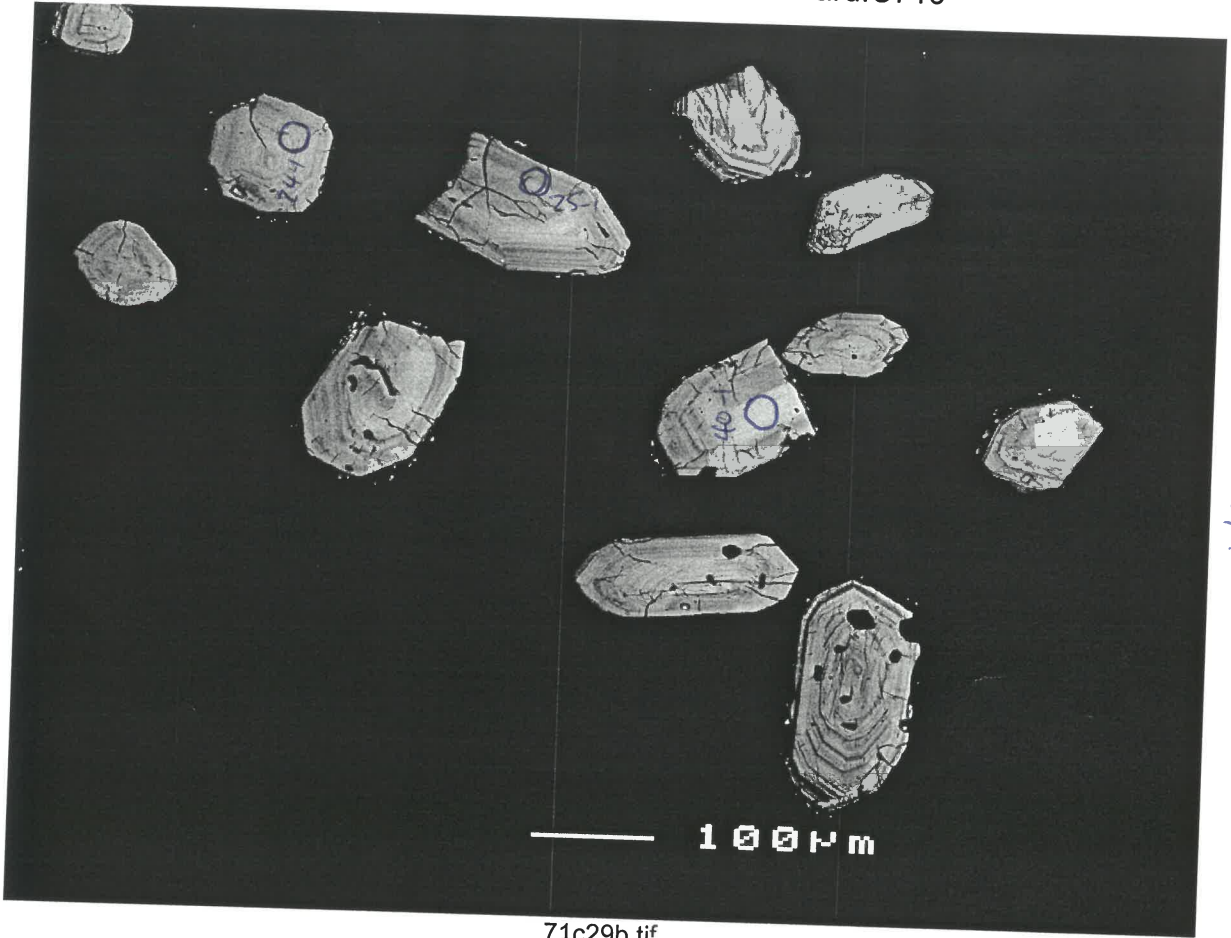
71c26b.tif



71c27b.tif

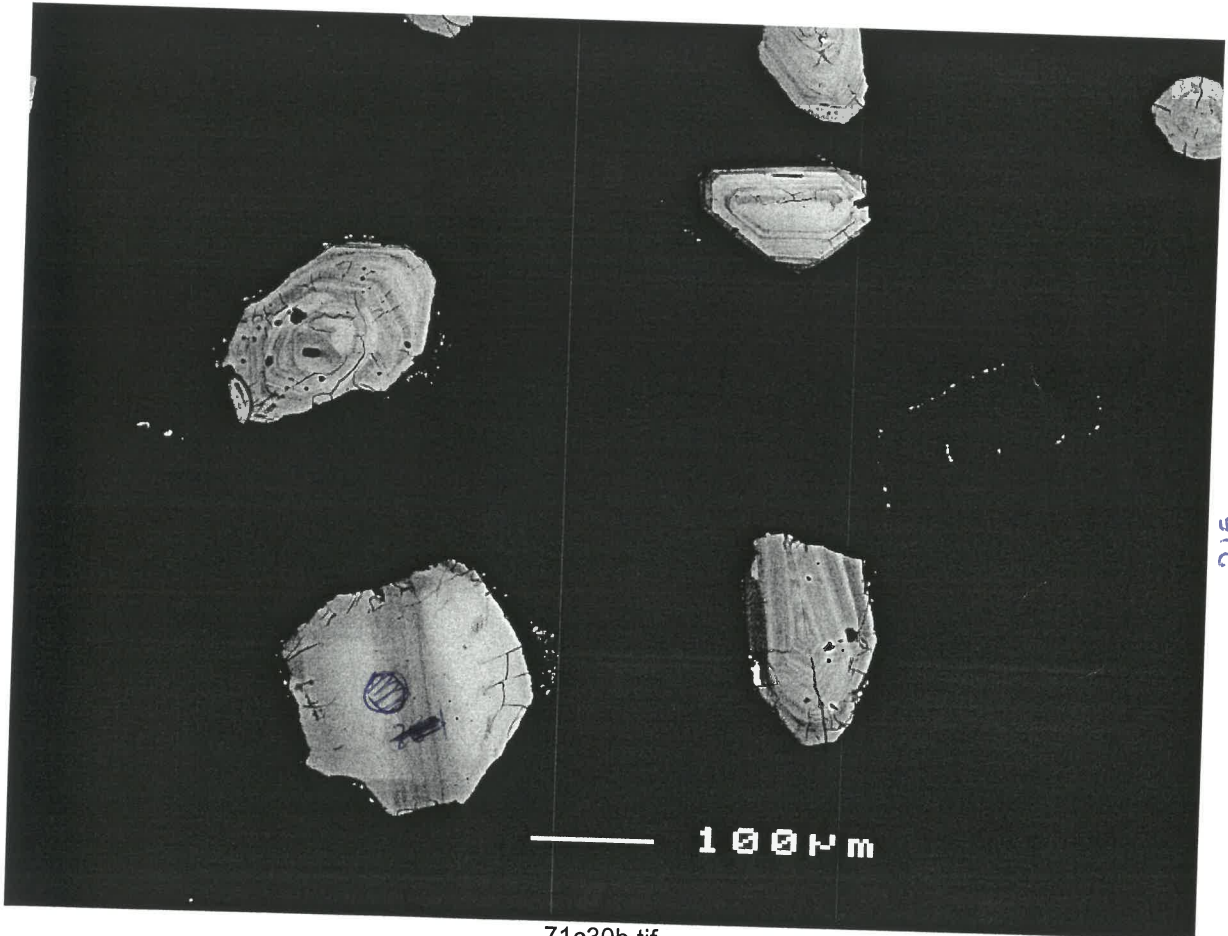


71c28b.tif



211/209

71c29b.tif



215

71c30b.tif