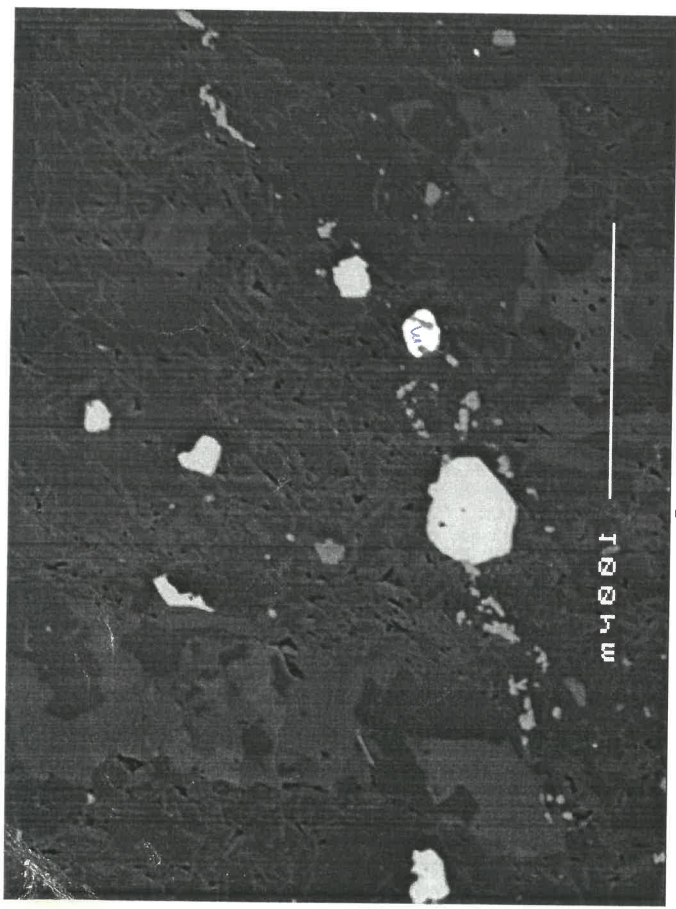


vertical images (reversed)

C93

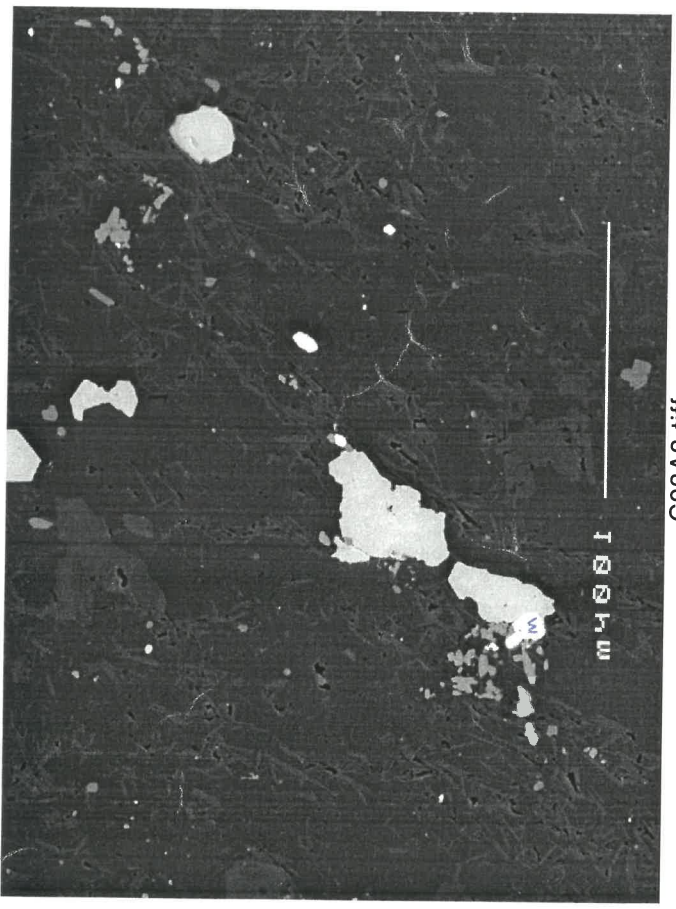
a

enlargement  
↑



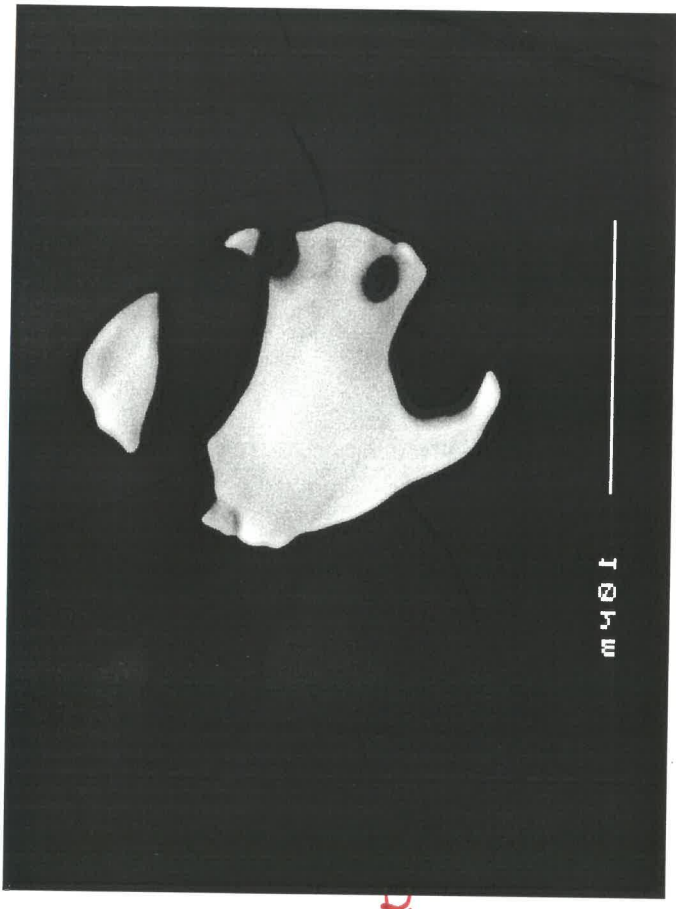
m4001

C93A2.tiff



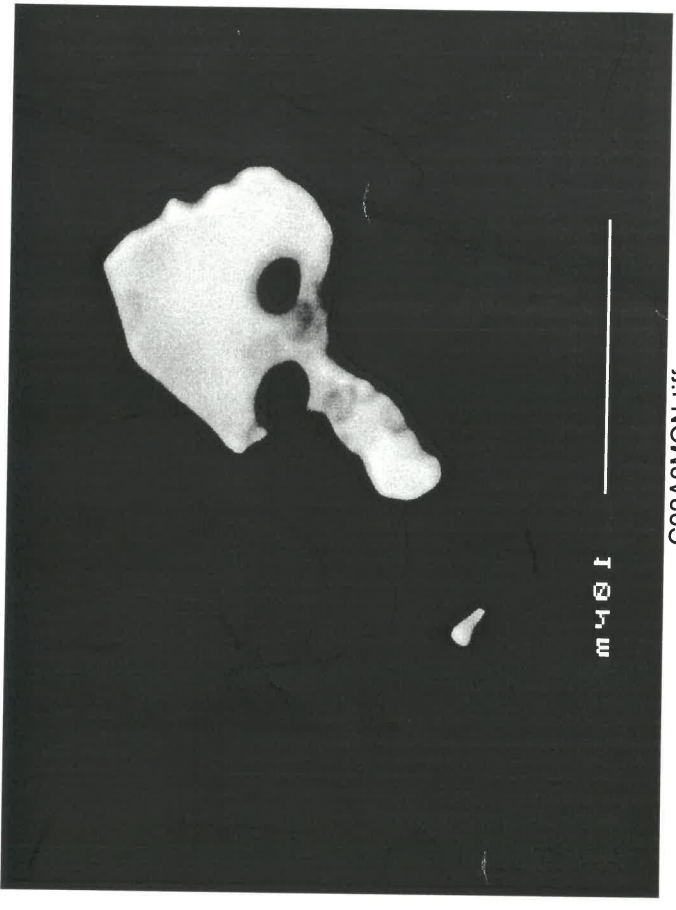
m4001

C93A3.tiff



m4001

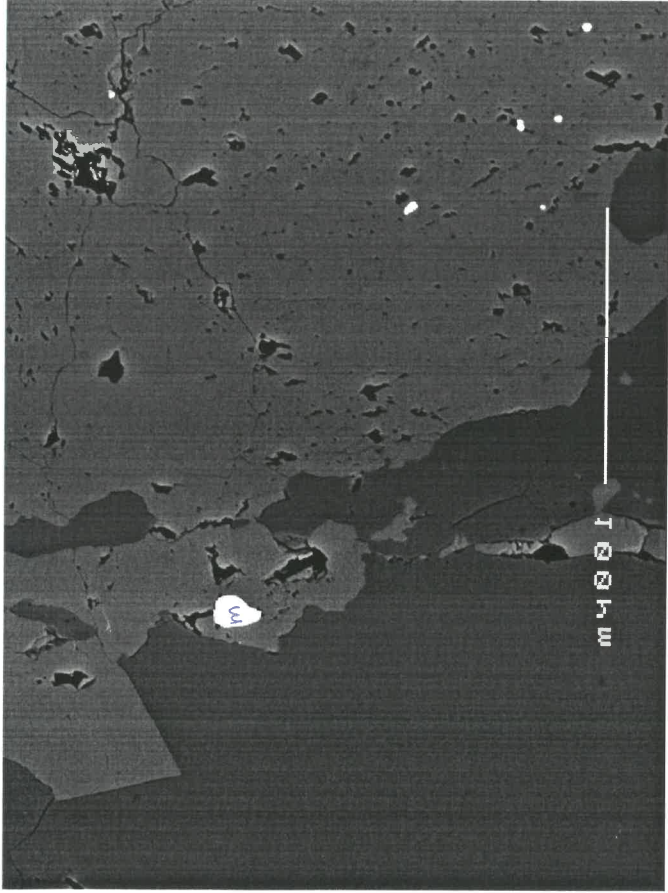
C93A2MON.tiff



m4001

C93A3MON.tiff

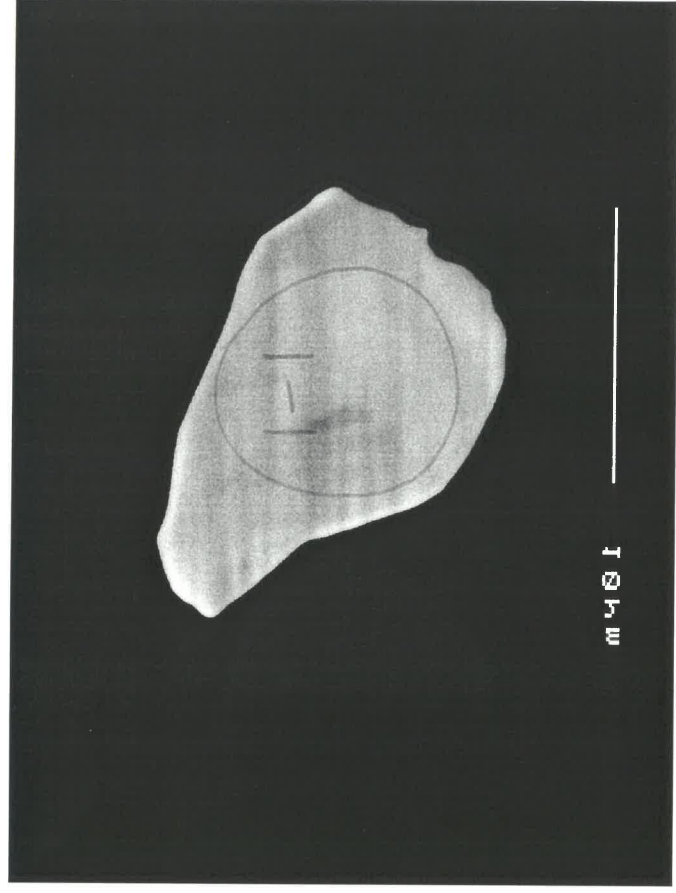
NB: Not in alphabetical order!



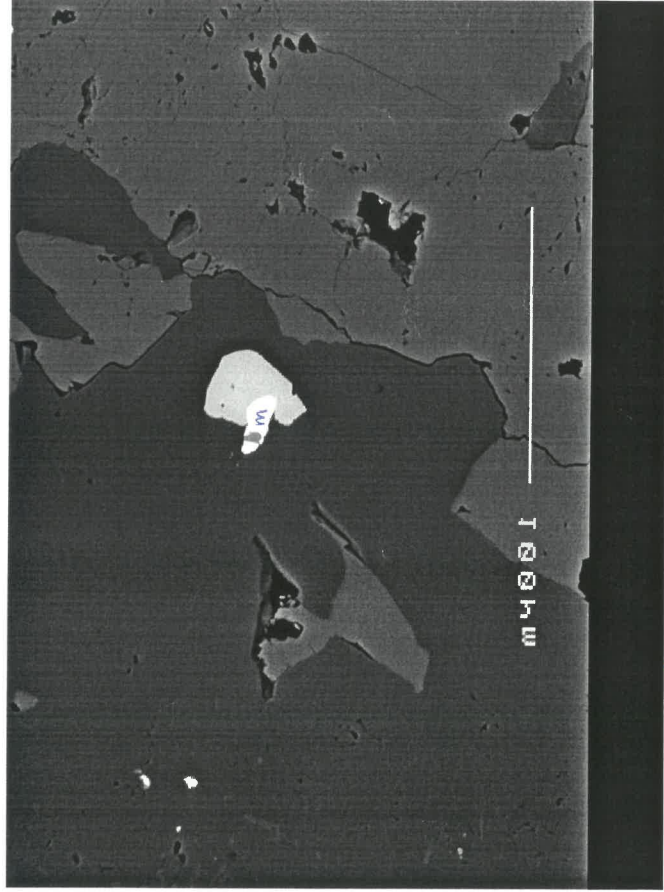
C93B1.tiff

C93

b

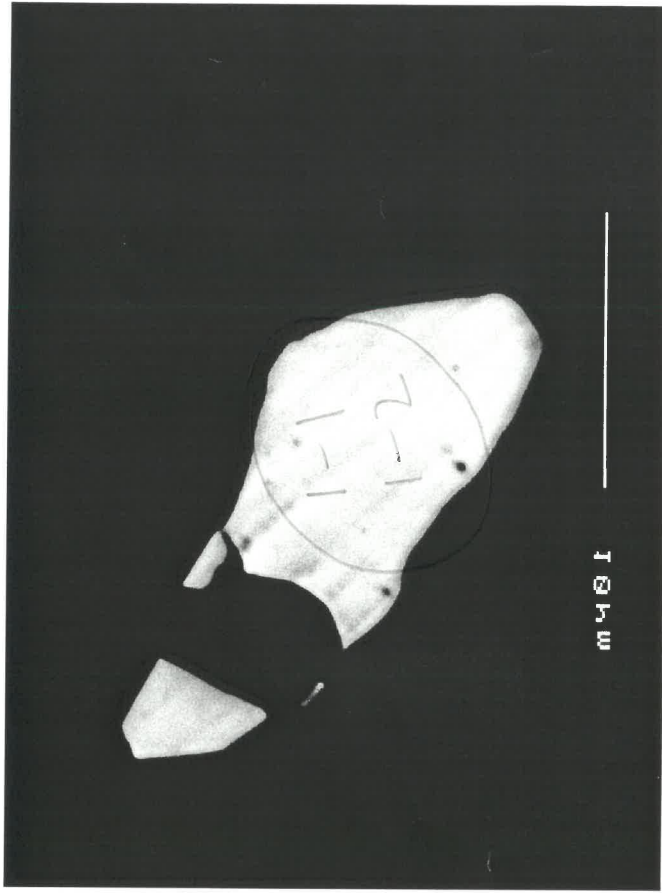


C93B1MON.tiff



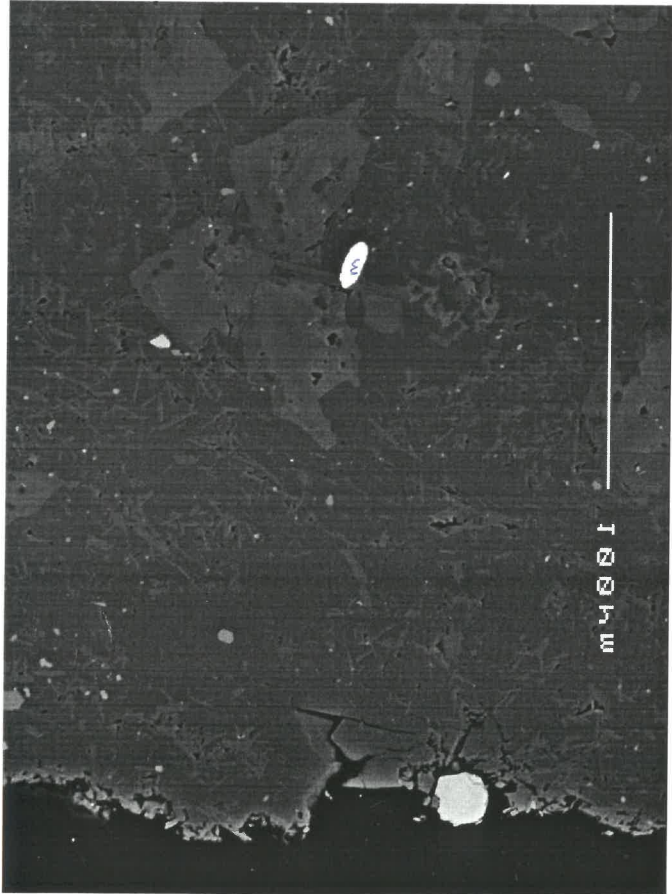
C93D1.tiff

d



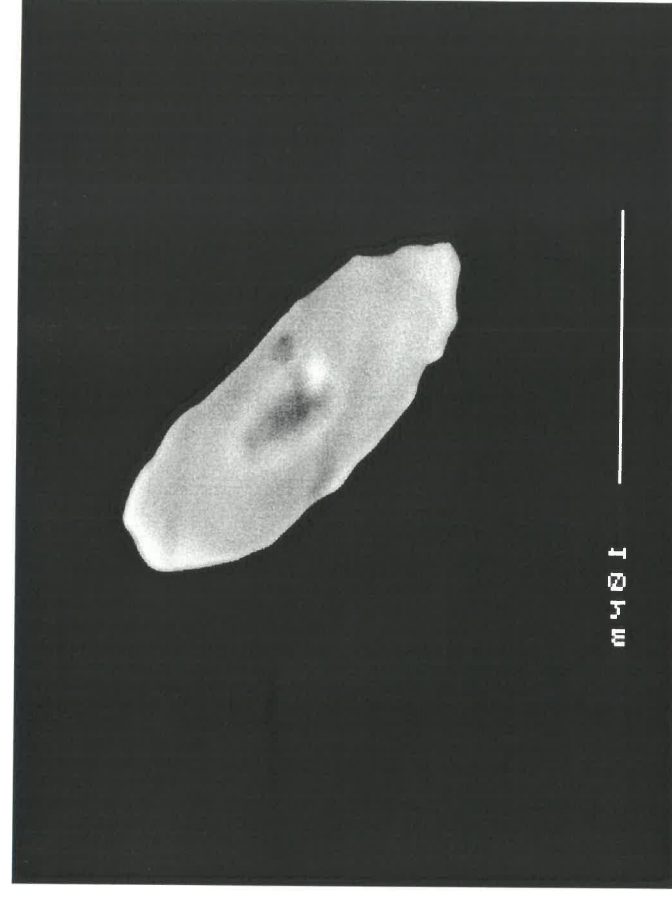
C93D1MON.tiff

c93  
c



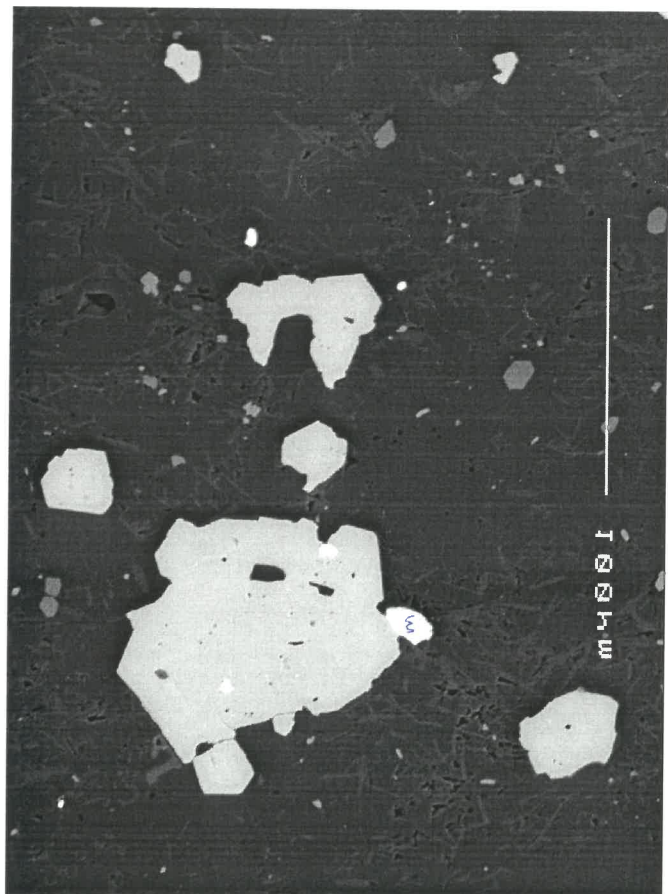
m481

C93C1.tiff



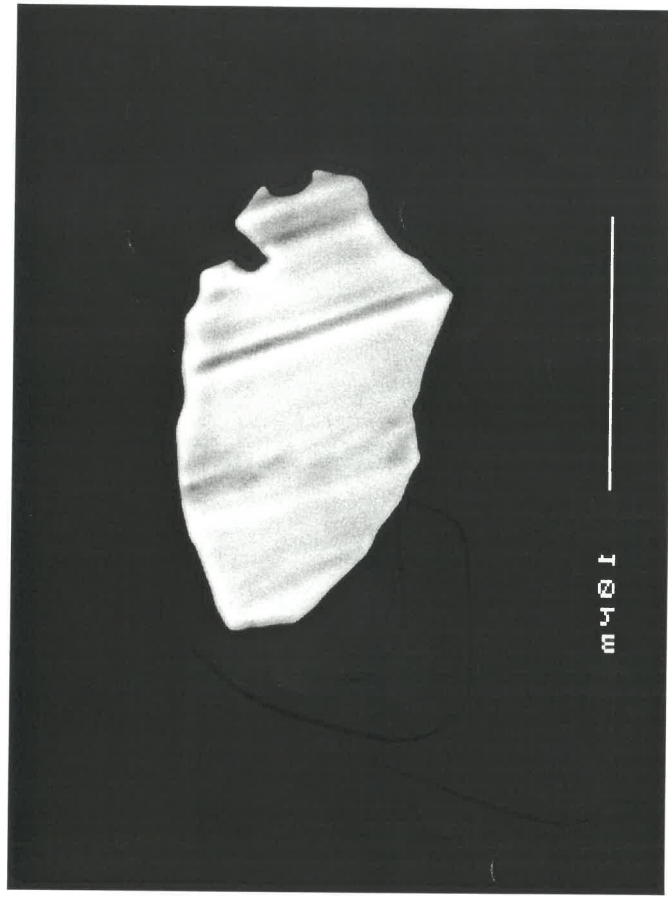
m481

C93C1MON.tiff



m481

C93C2.tiff



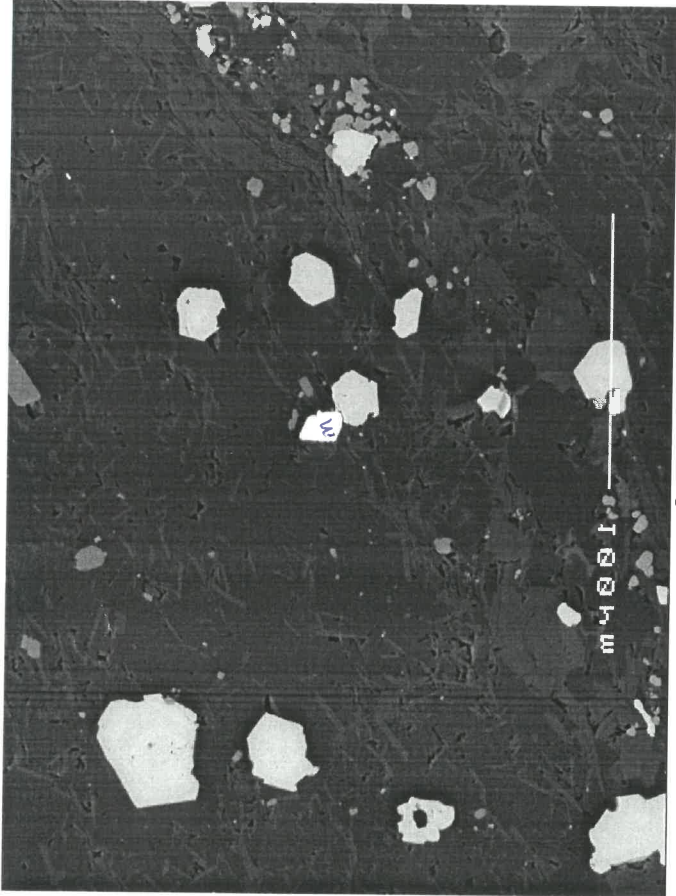
m481

C93C2MON.tiff

MSK

c93

e

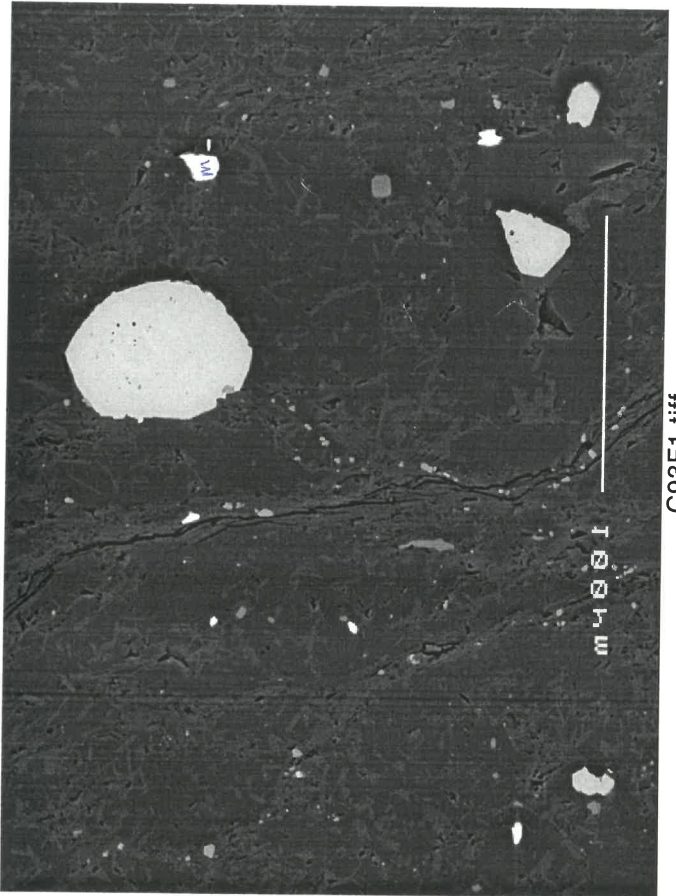


C93E1.tiff

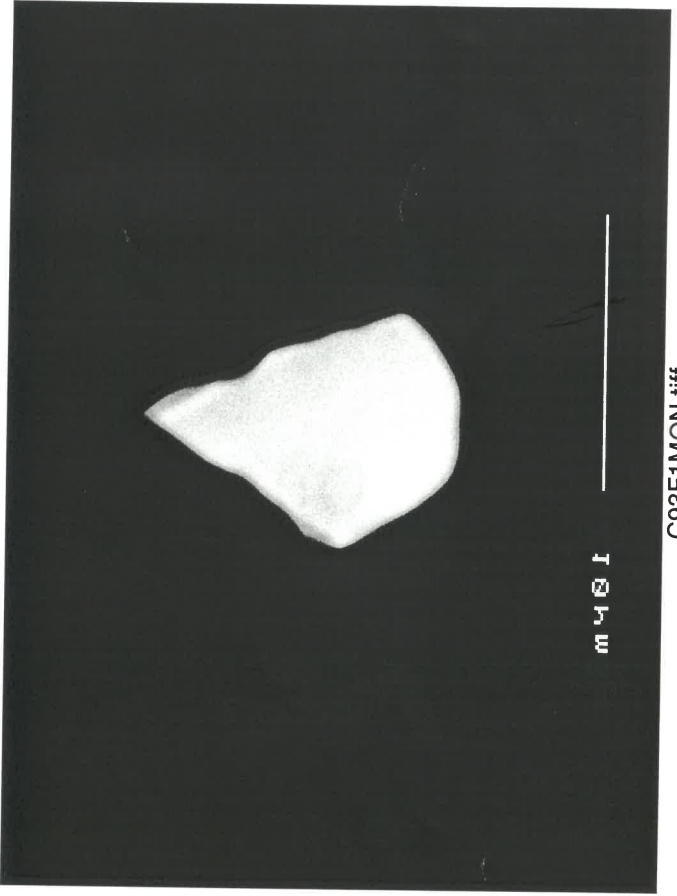


C93E1MON.tiff

f



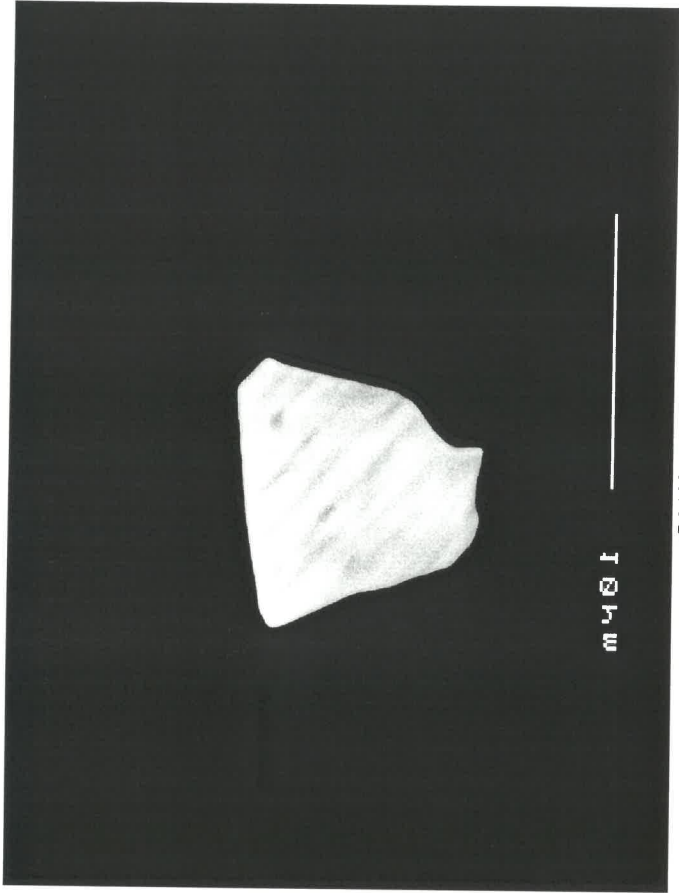
C93F1.tiff



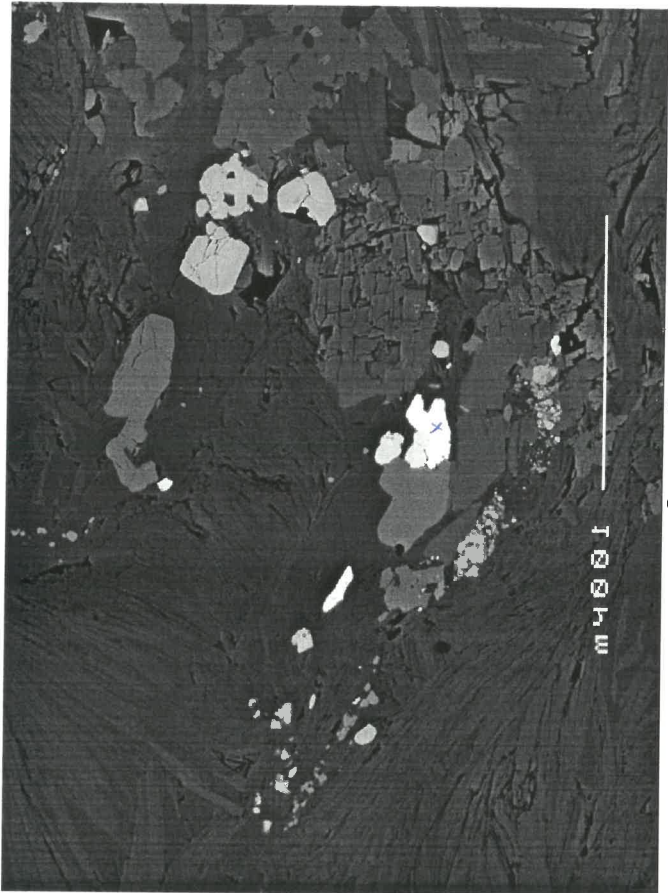
C93F1MON.tiff

C93

k



L1



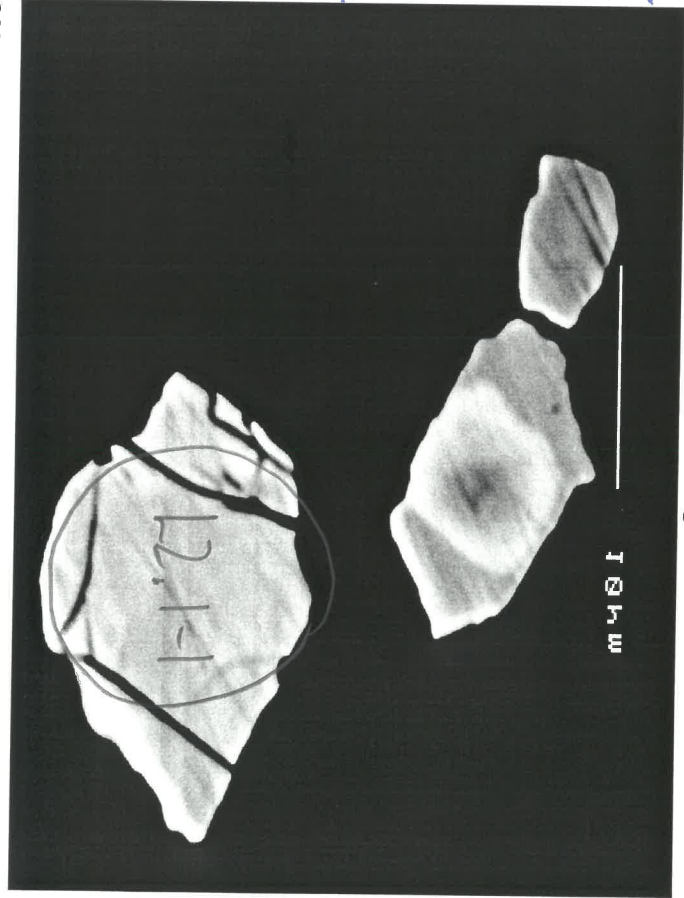
grey = xl  
white = mo

~~3~~

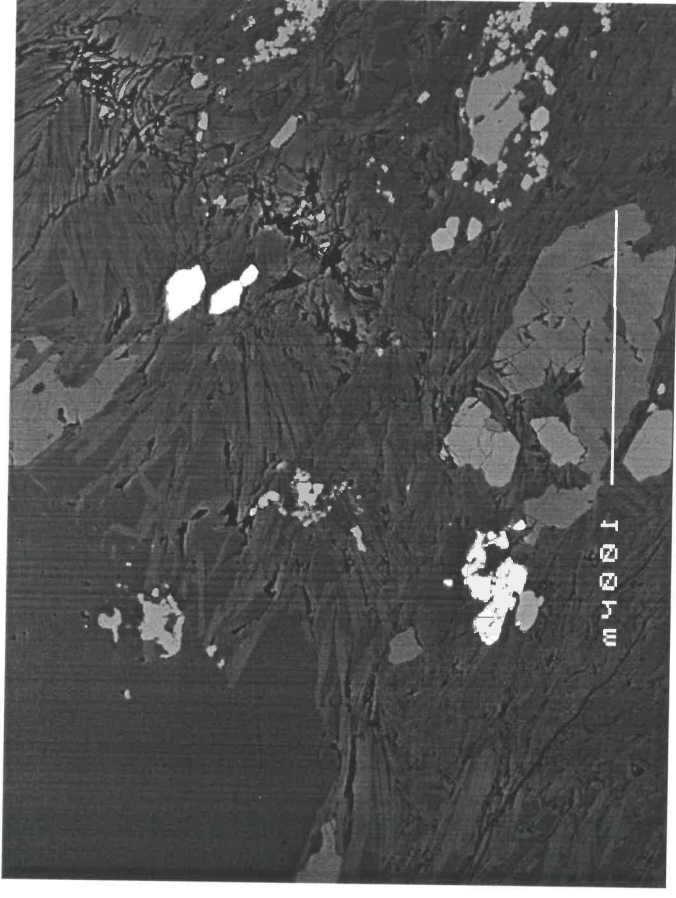
c93

L2\*3

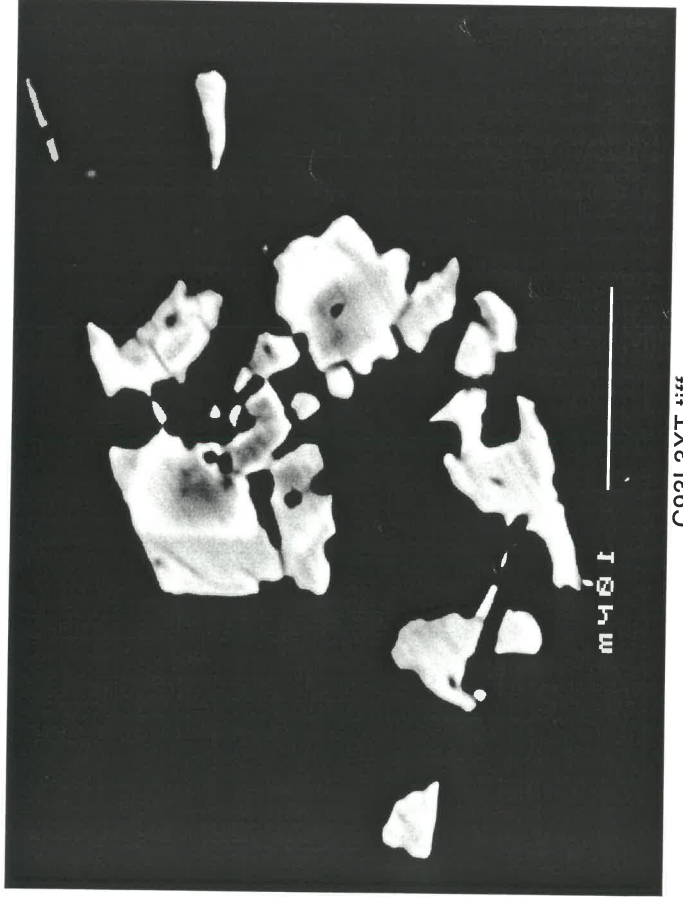
Note: find same spot analyzed due to 1st 207 peak X



C93L2XT.tiff



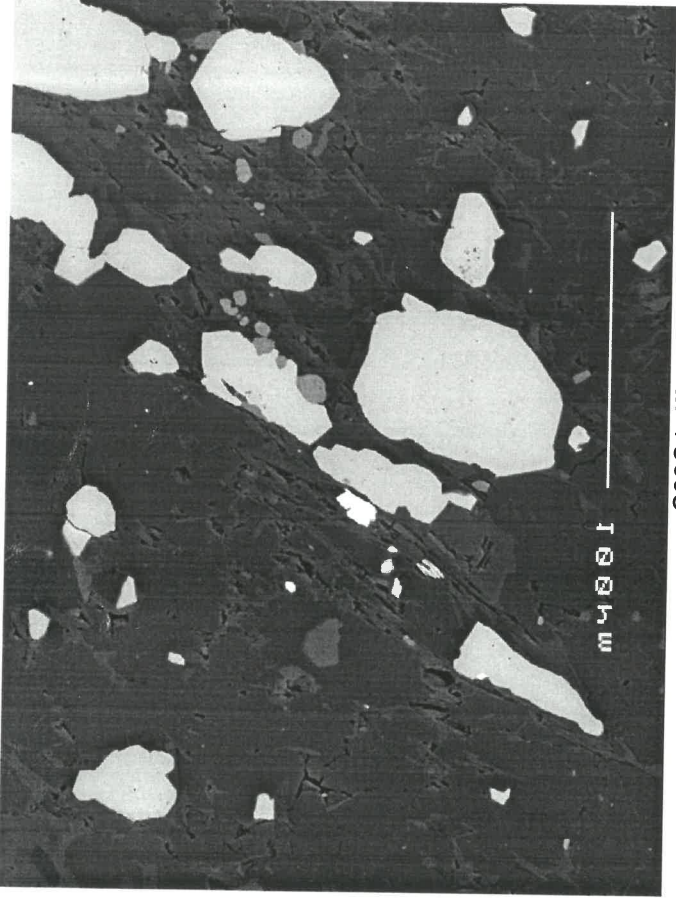
C93L2\_3.tiff



C93L3XT.tiff

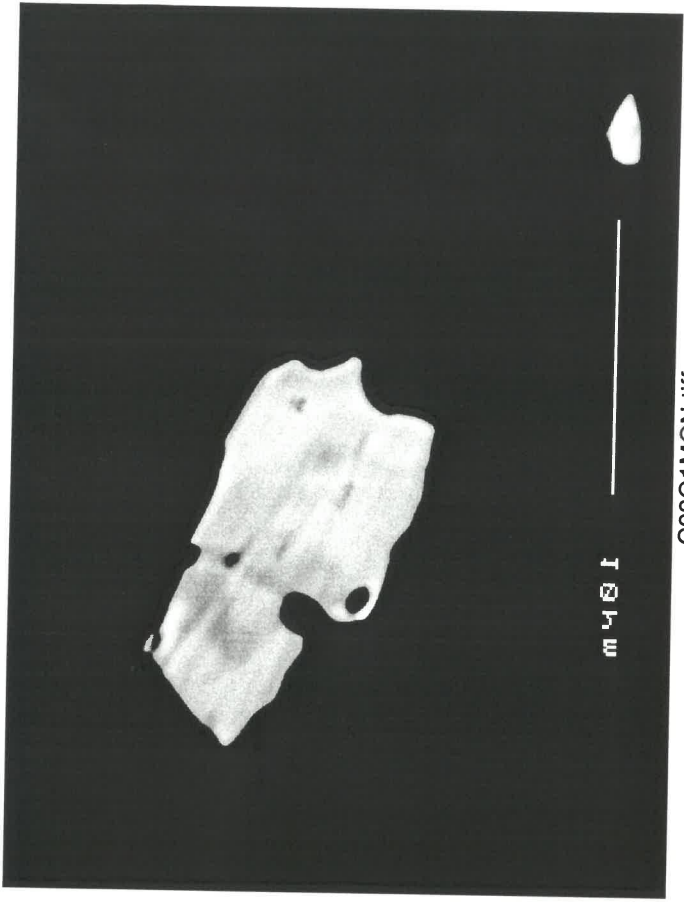
c93

g



m4001

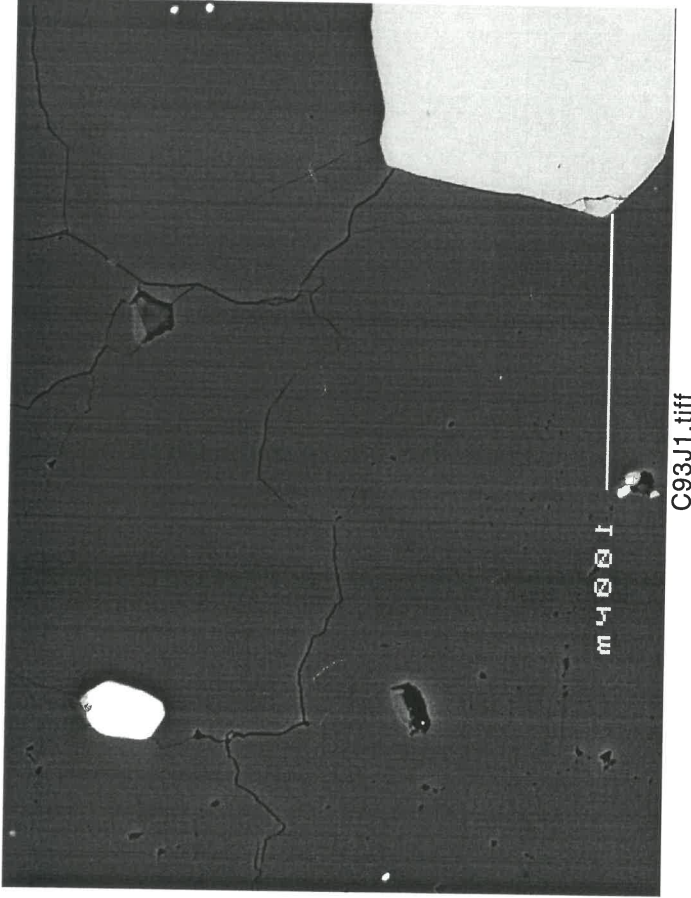
C93G1.tiff



m4001

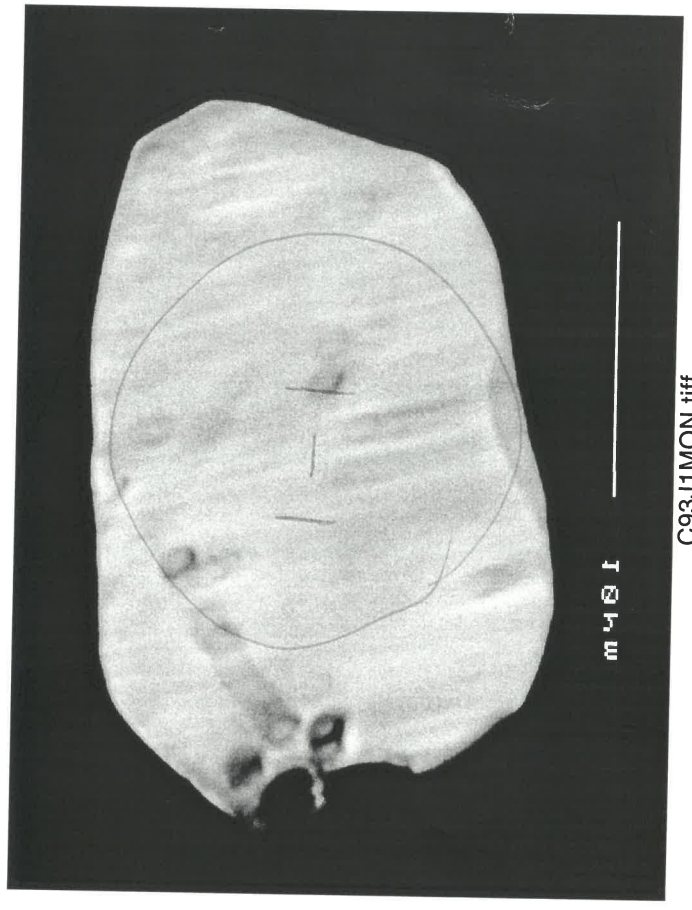
C93G1MON.tiff

i



m4001

C93J1.tiff

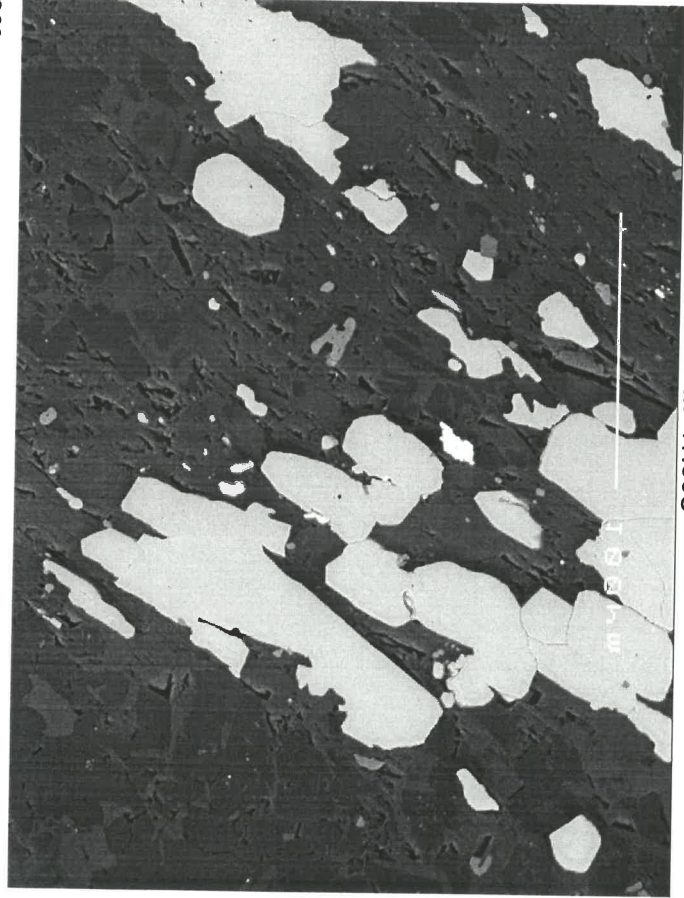


m4001

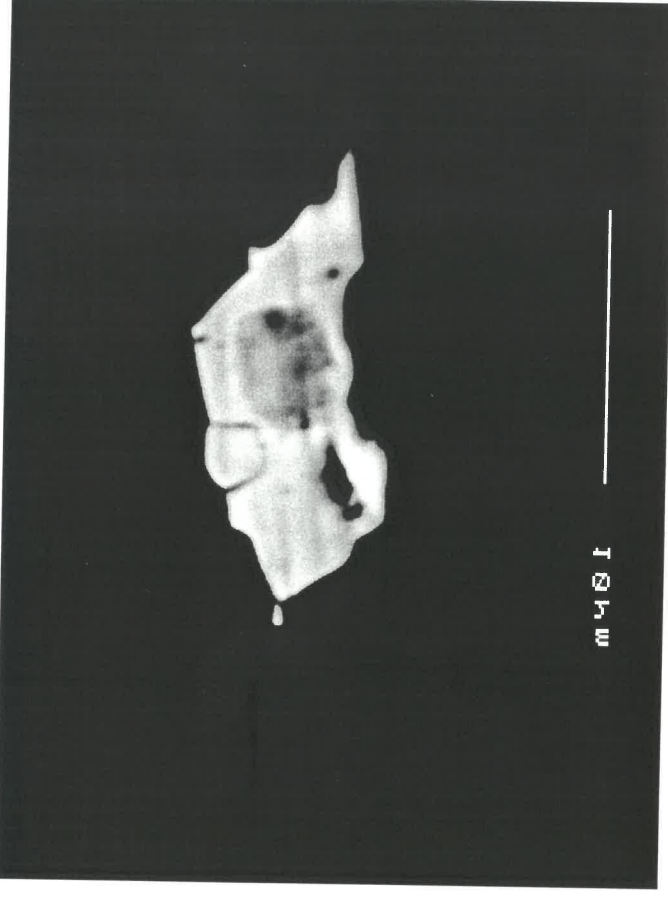
C93J1MON.tiff



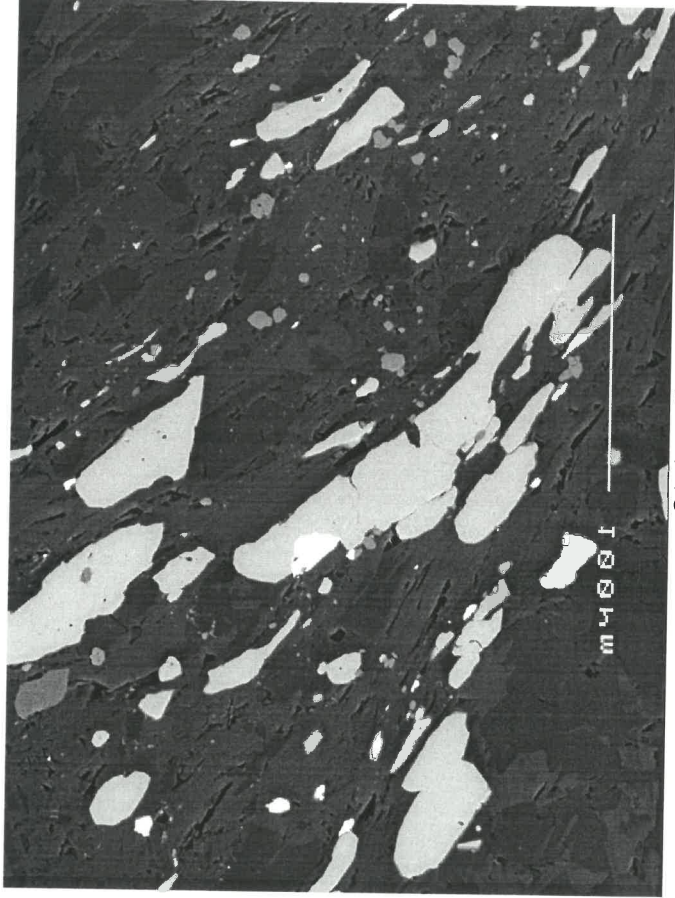
С93  
h



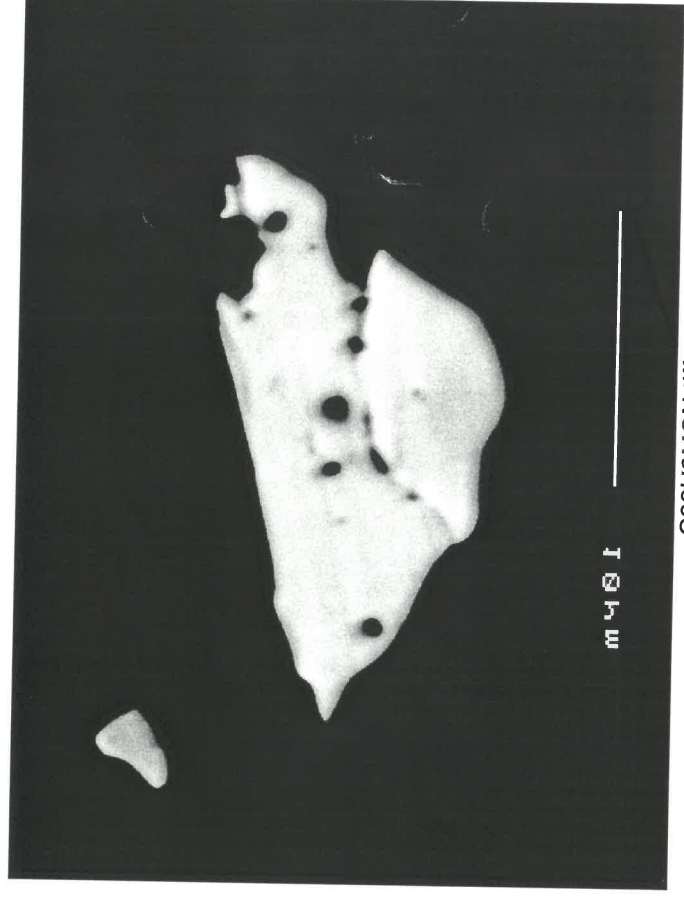
C93H1.tiff



C93H1MON.tiff



C93H2.tiff



C93H2MON.tiff

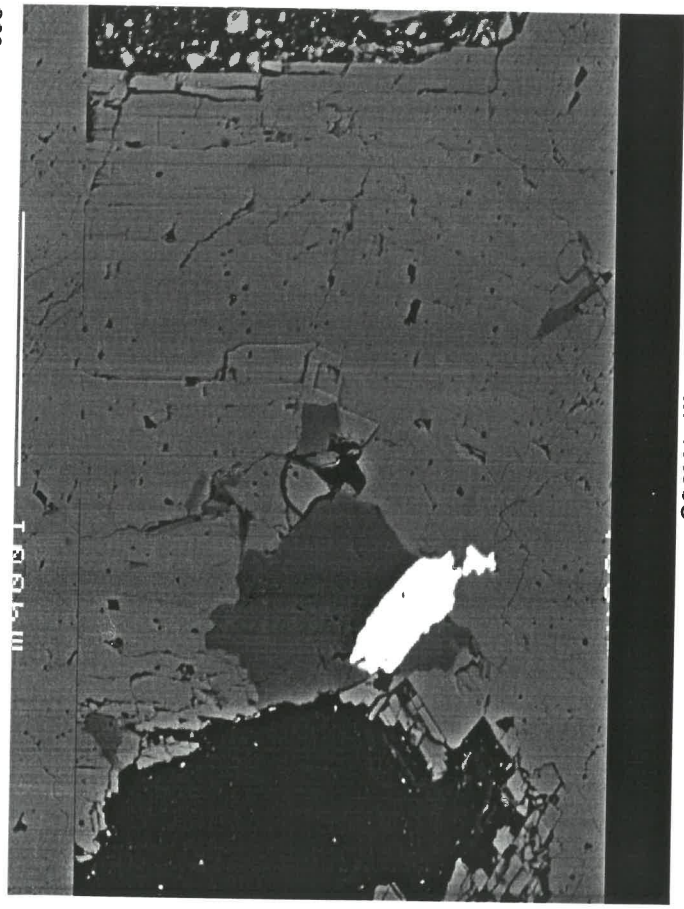


ORIGINAL IMAGES (reversed)

C93

M

\*



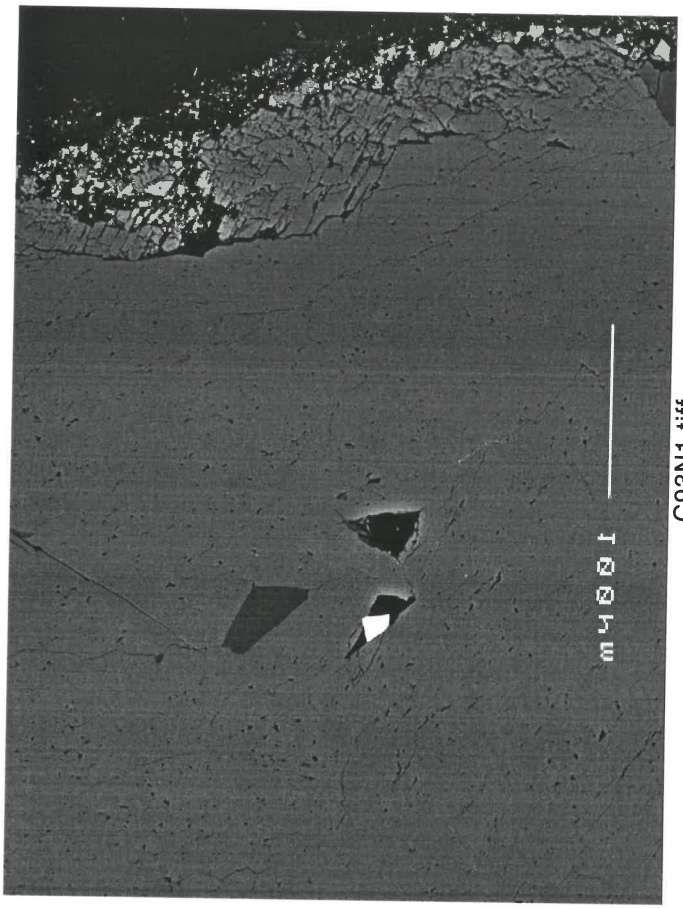
C93M1.tif



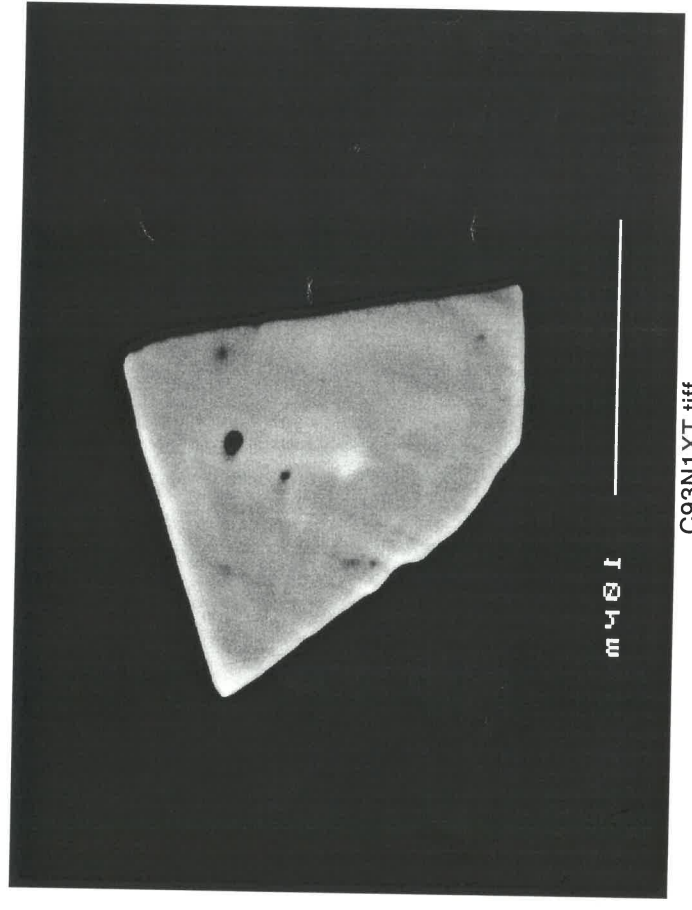
C93M1MON.tif

N

? X



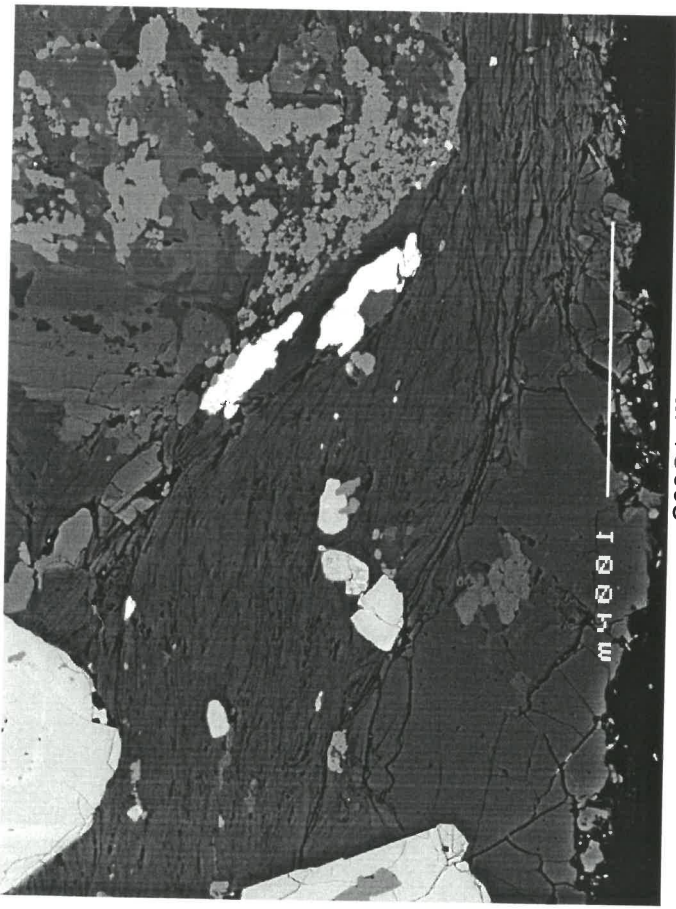
C93N1.tif



C93N1XT.tif

c93

q



C93Q1.tiff

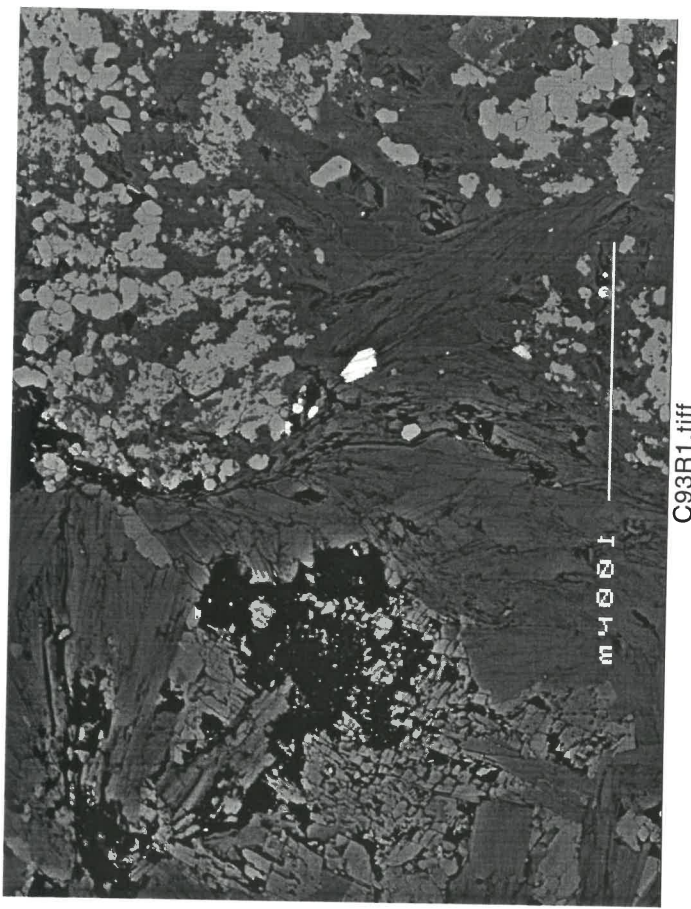


C93Q1XT.tiff

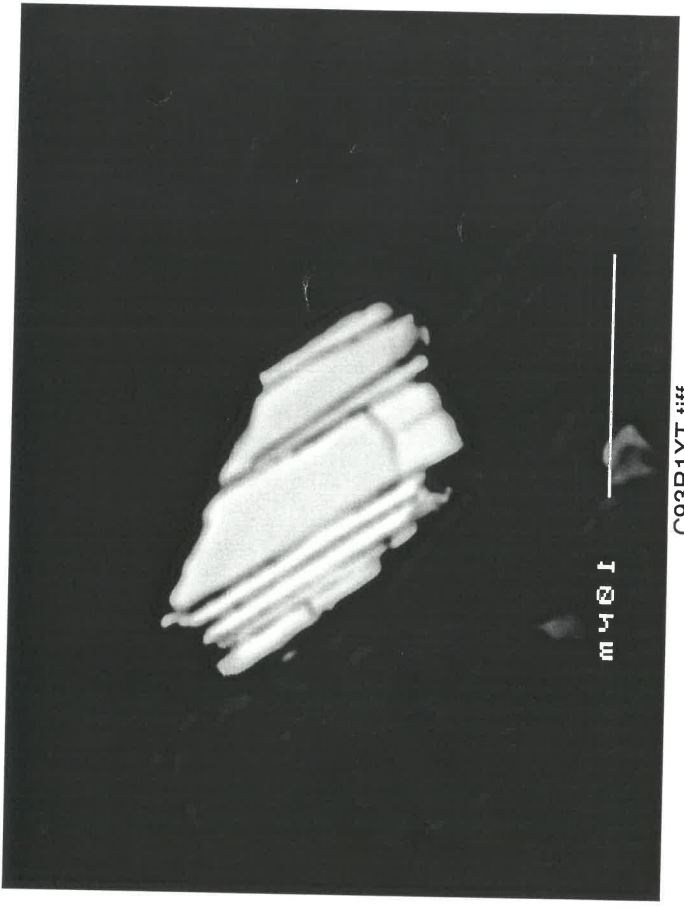
X

Note: Several scans in same spot absorbed due to last 206 peak.

r



C93R1.tiff



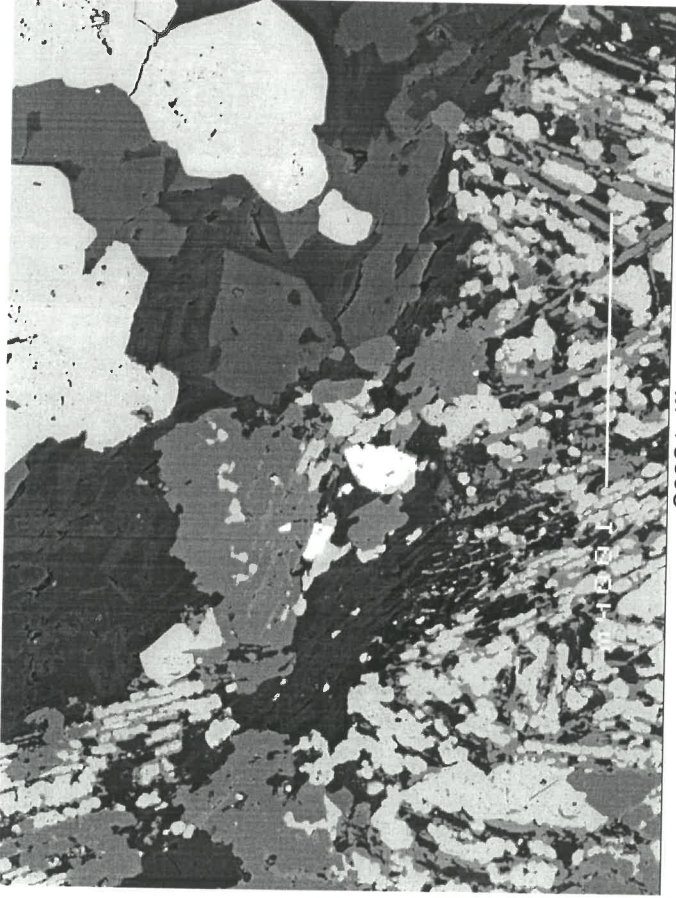
C93R1XT.tiff

מס' 1000

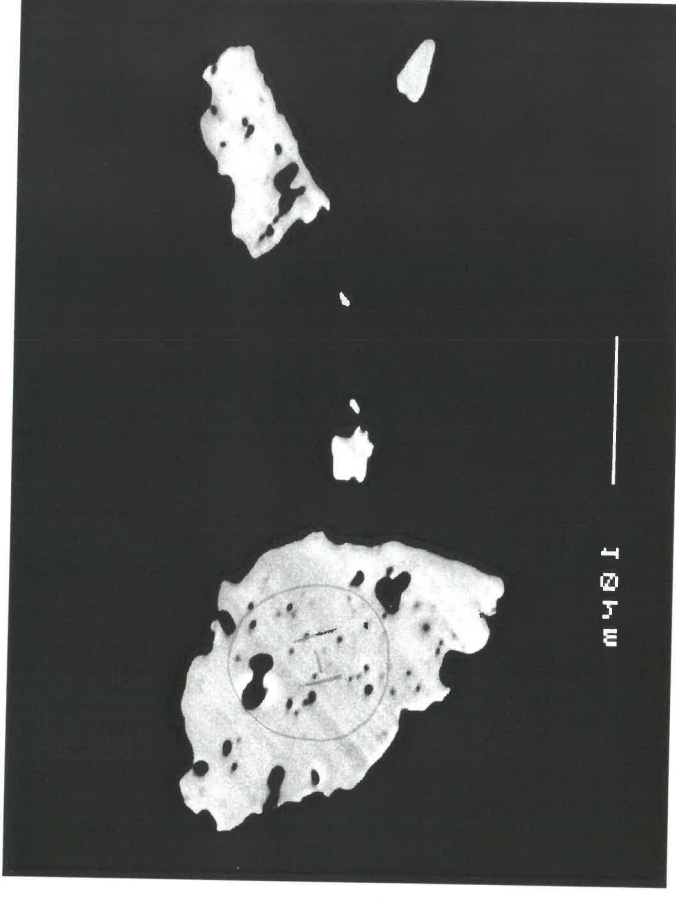
C93

S

Aborted 206  
because Pb  
too low.

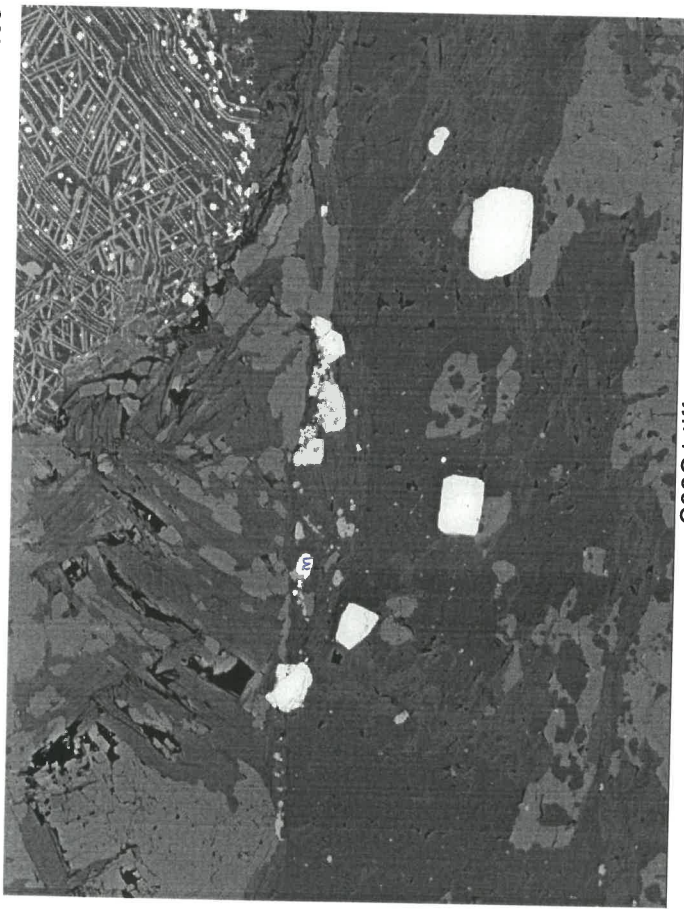


C93S1.tiff

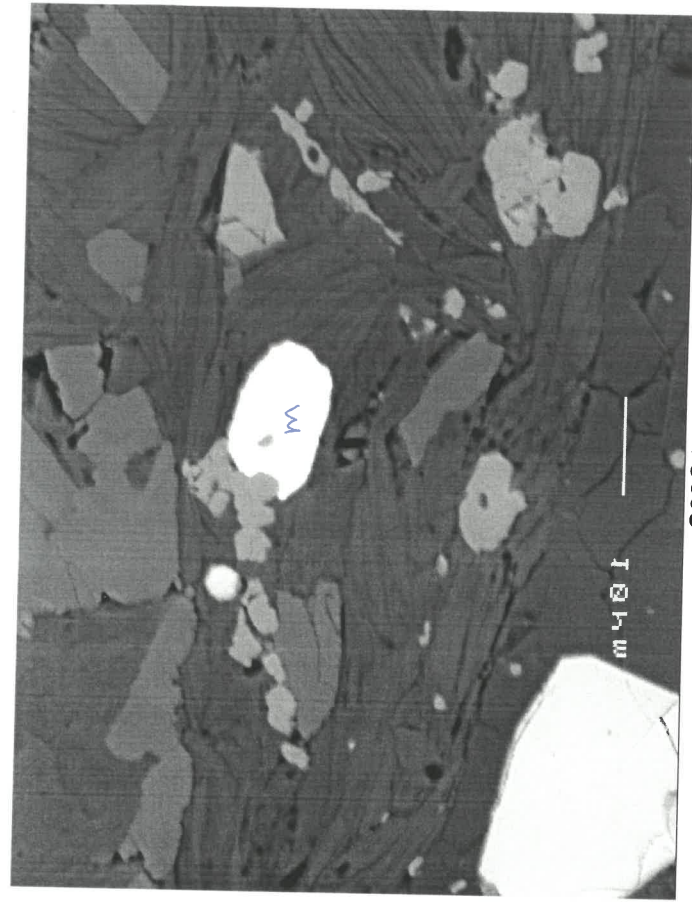


C93S1XT.tiff

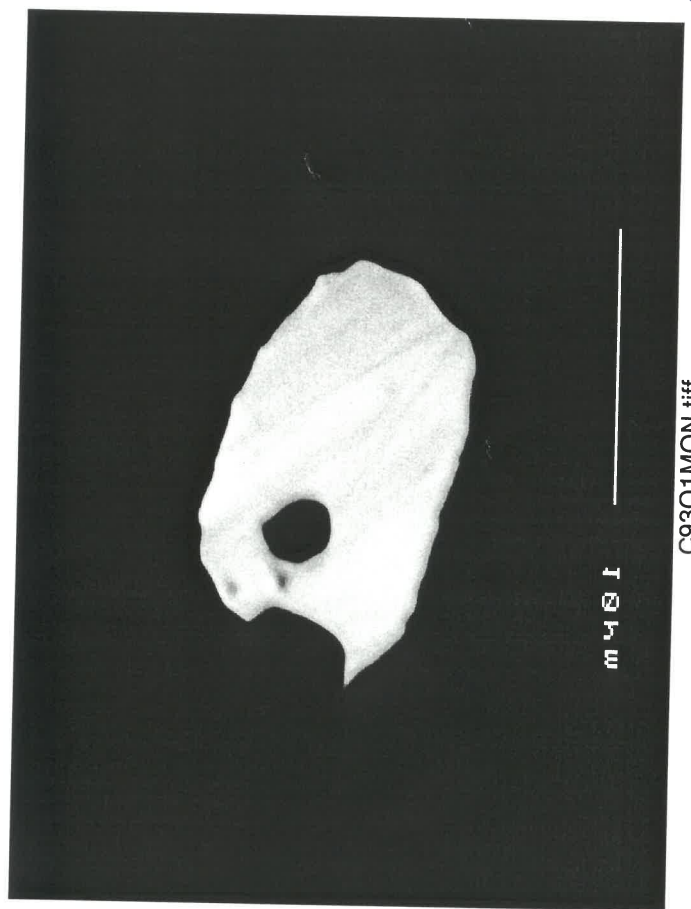
93  
0



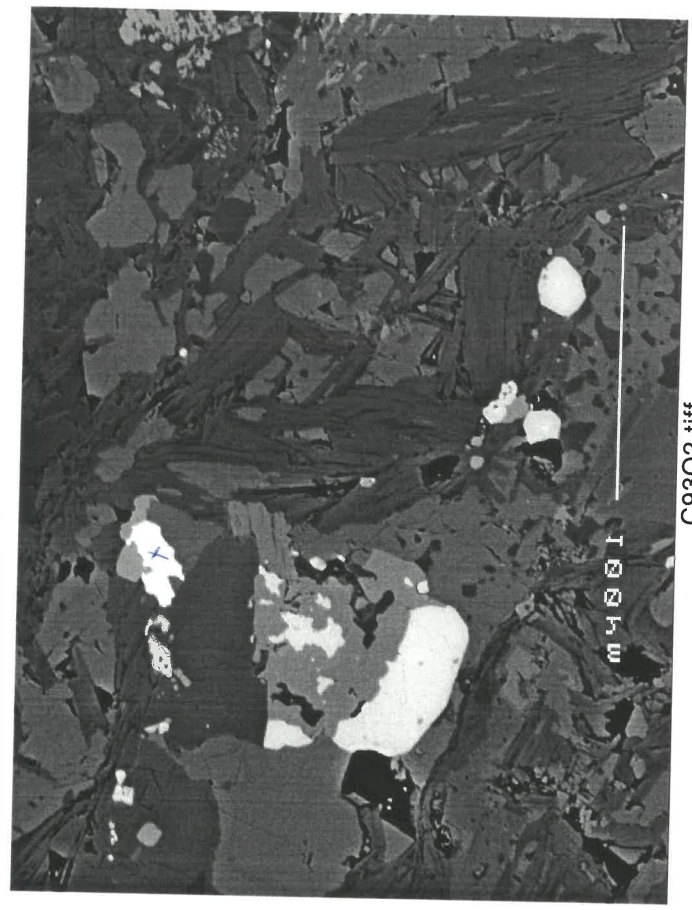
C9301.tiff



C9301A.tiff



C9301MON.tiff



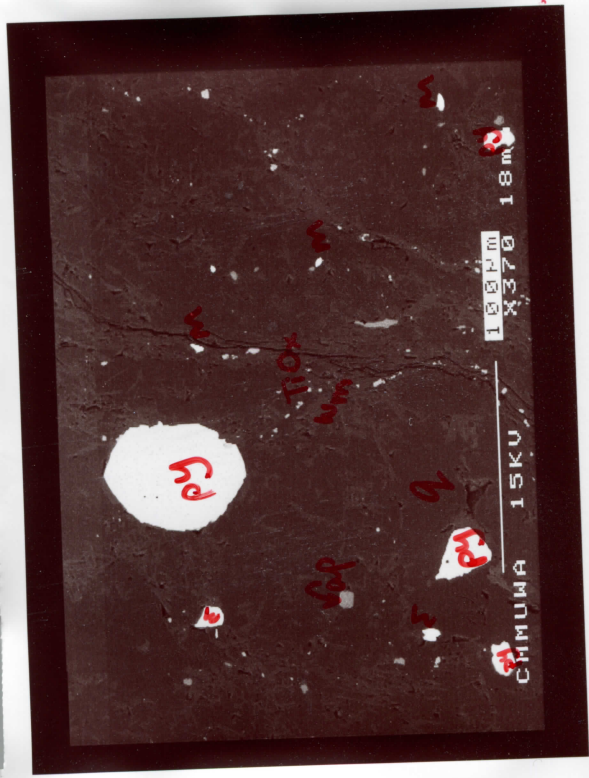
C9302.tiff



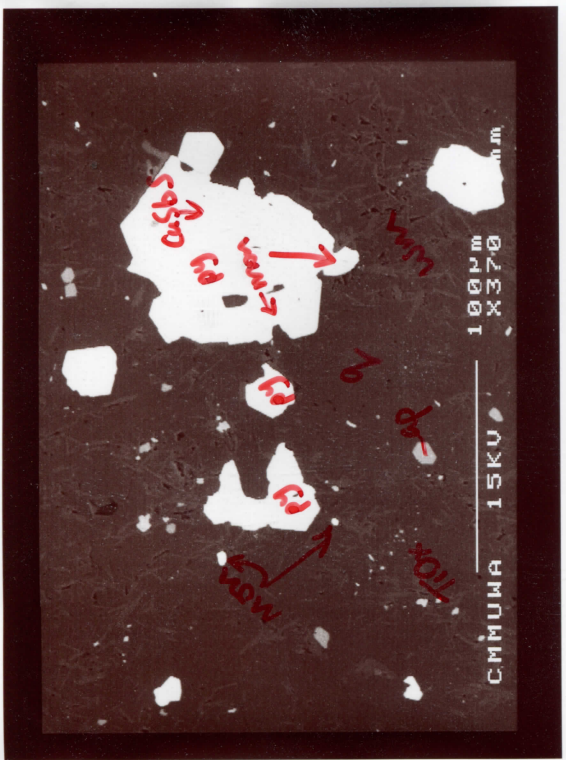




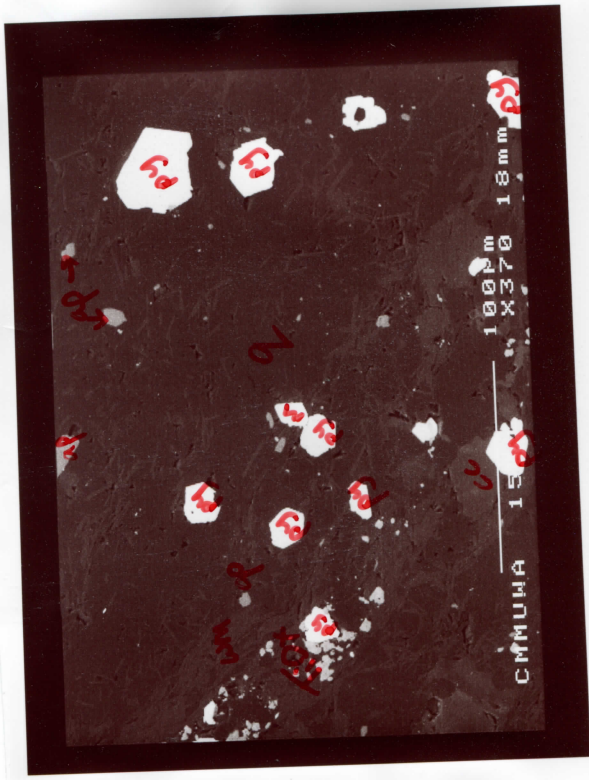
T1



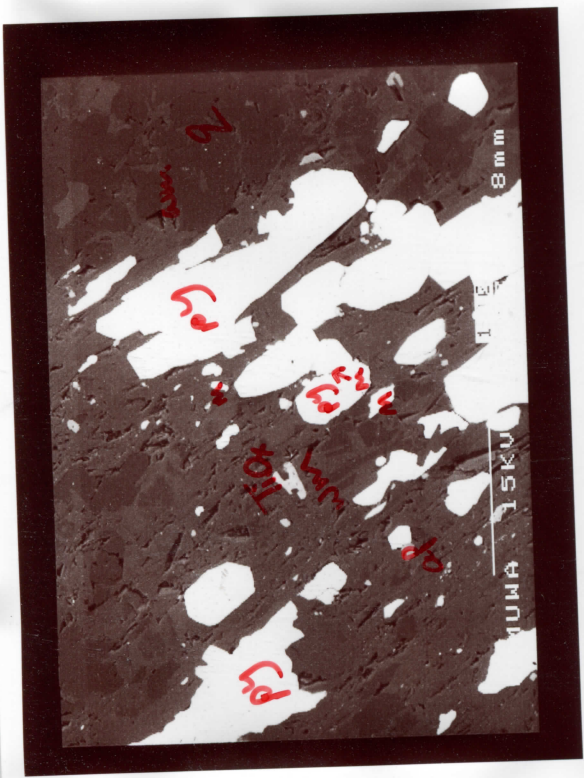
f1



C2



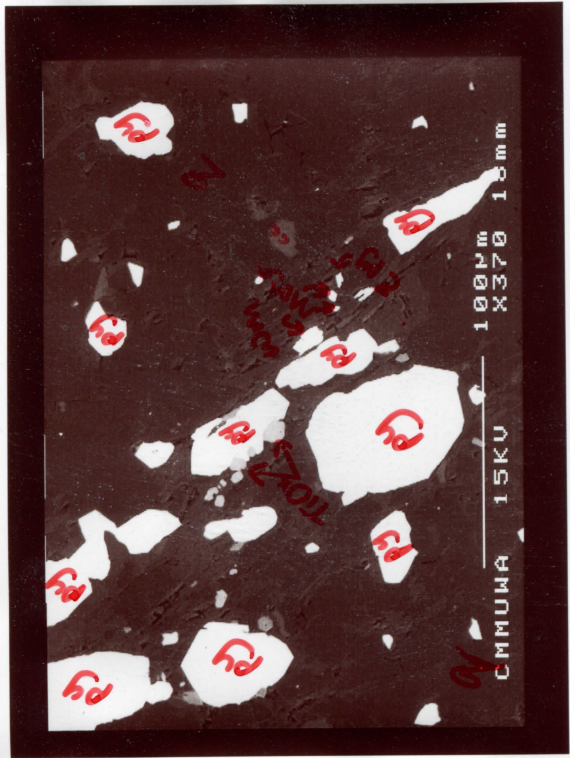
e1



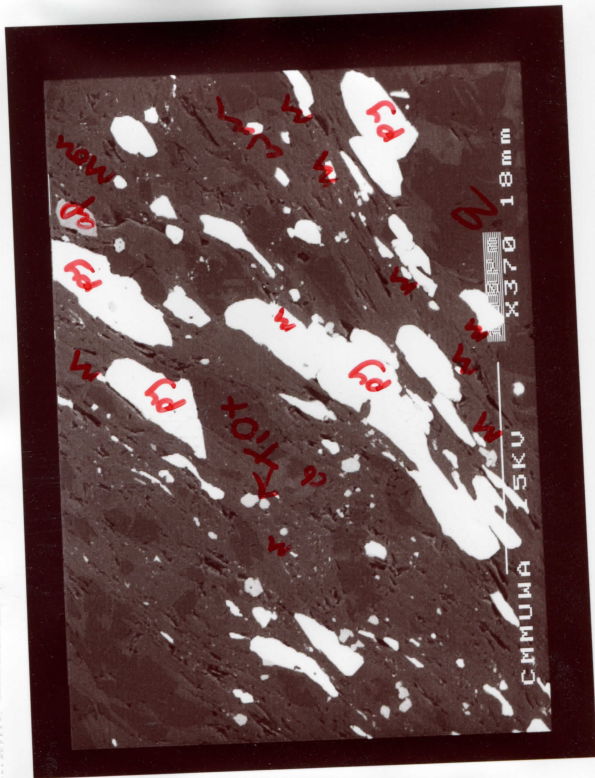
h1



h1

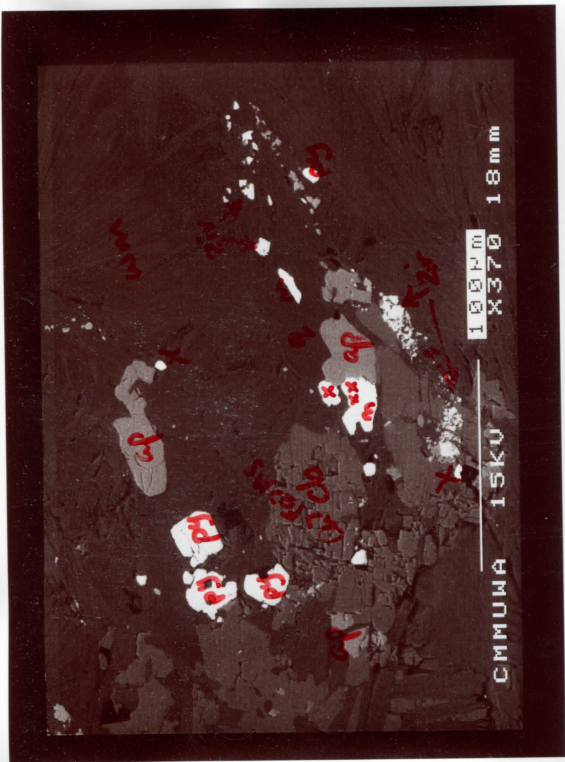


h1



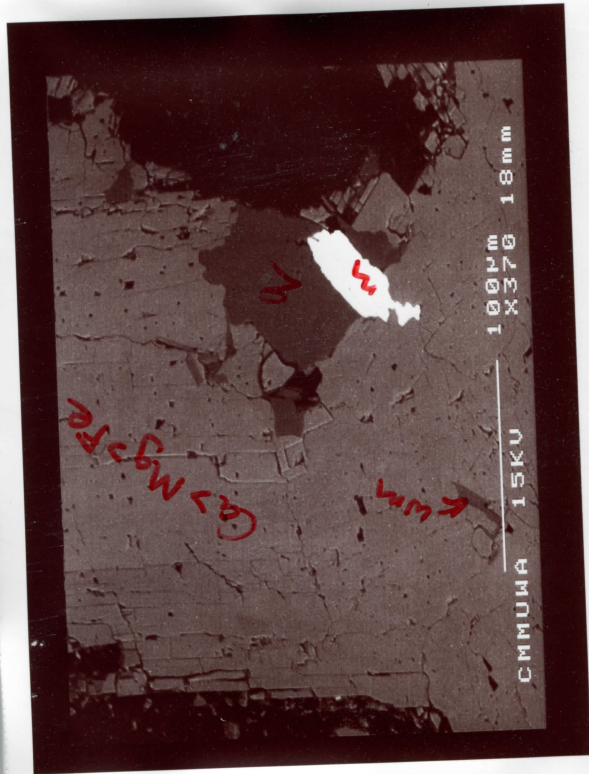
h2



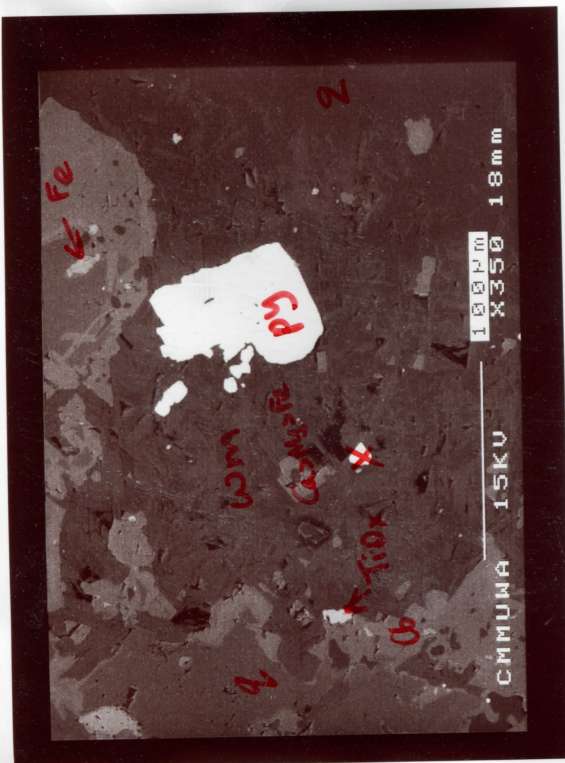


l1

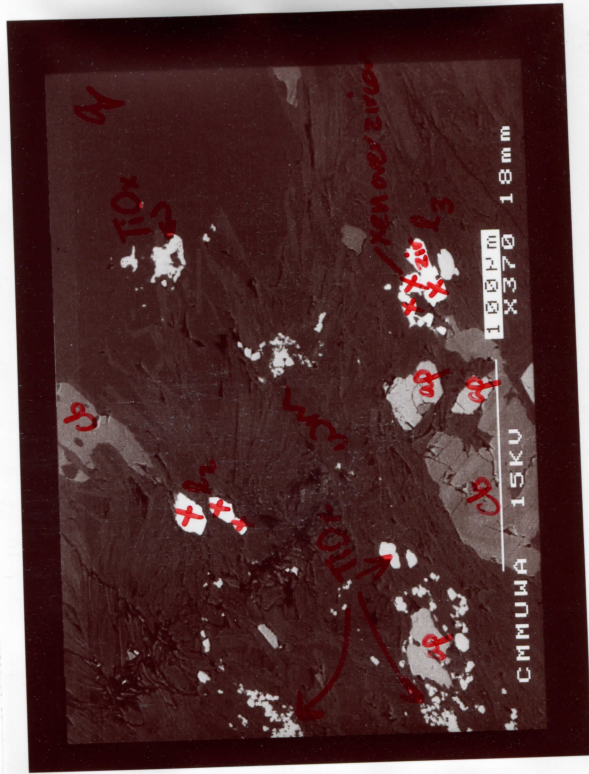
c93



m1

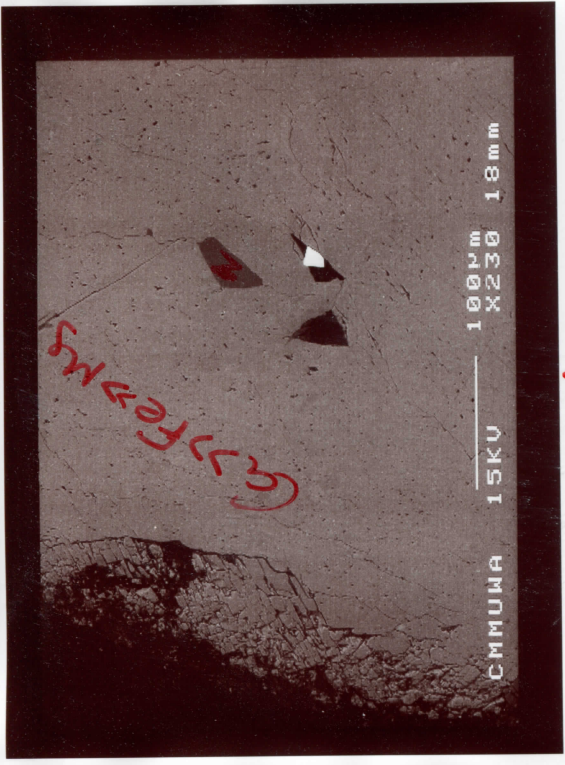


K1

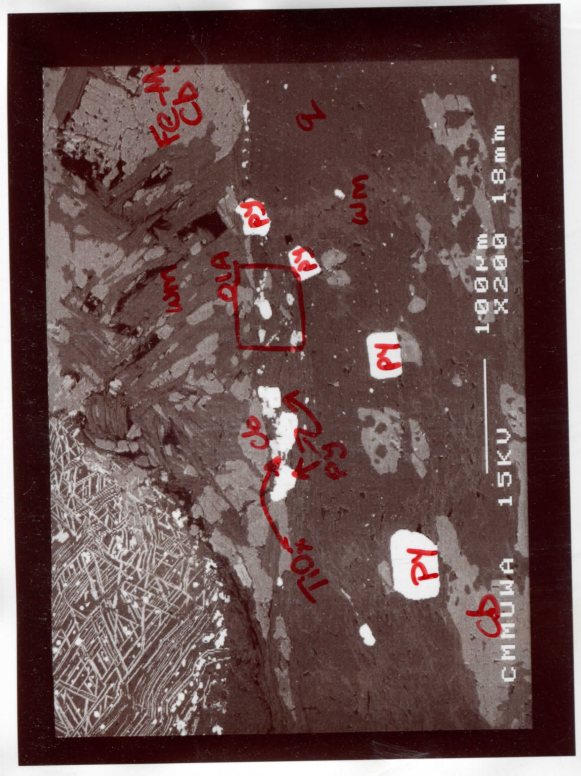


22-3

c93

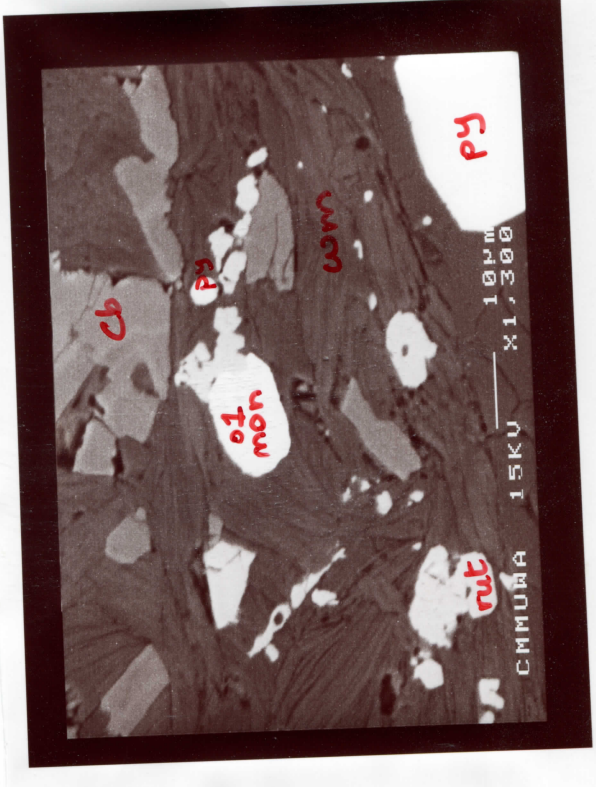


TN



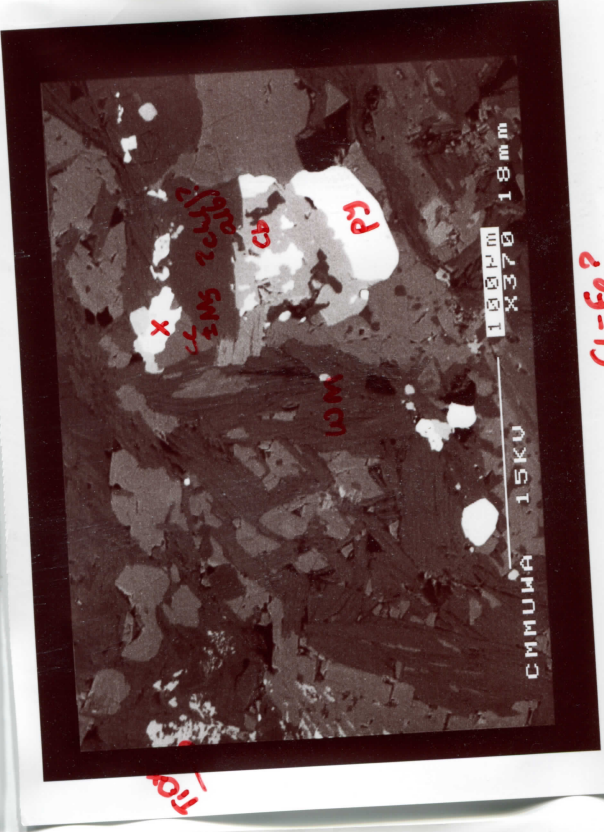
OI

C93



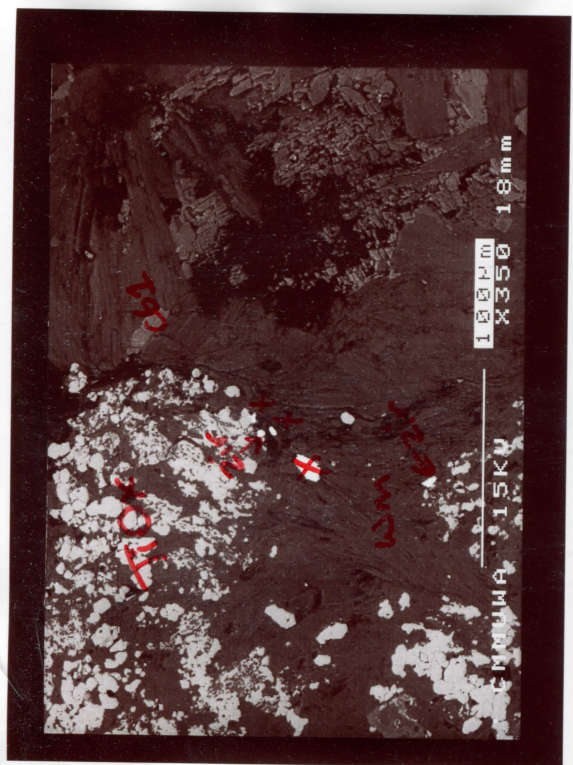
C93

O1A

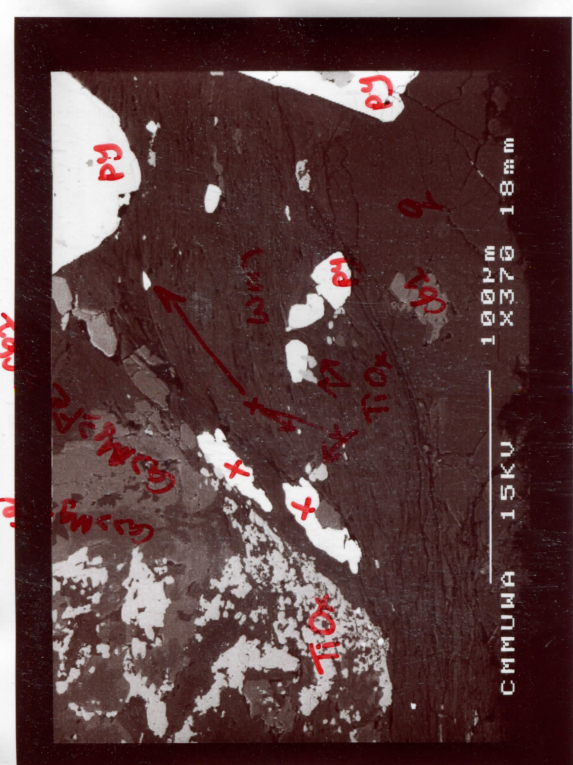


C6-Fe?

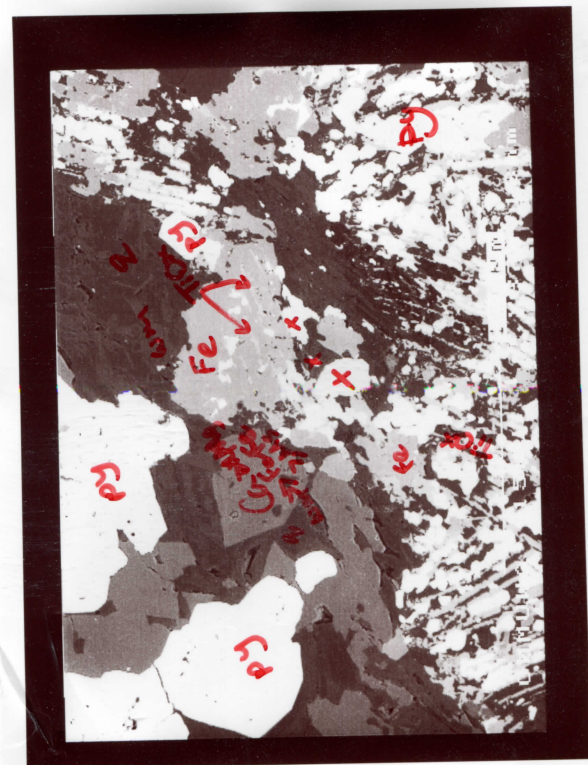
O2



91



92



51