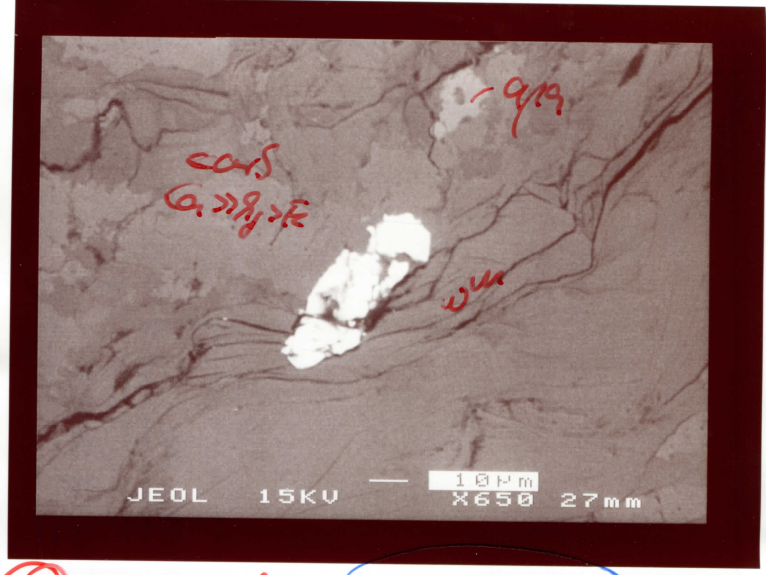


(I) ↑ I_c
focussant

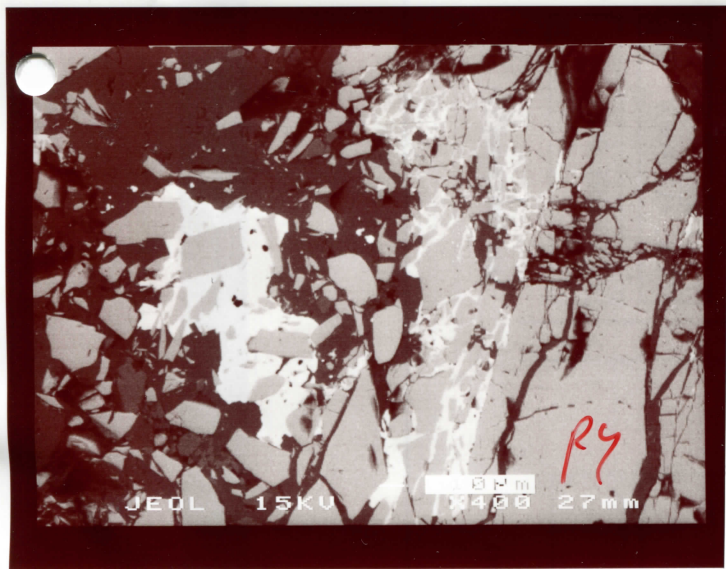
93WC-5



(I) marantite

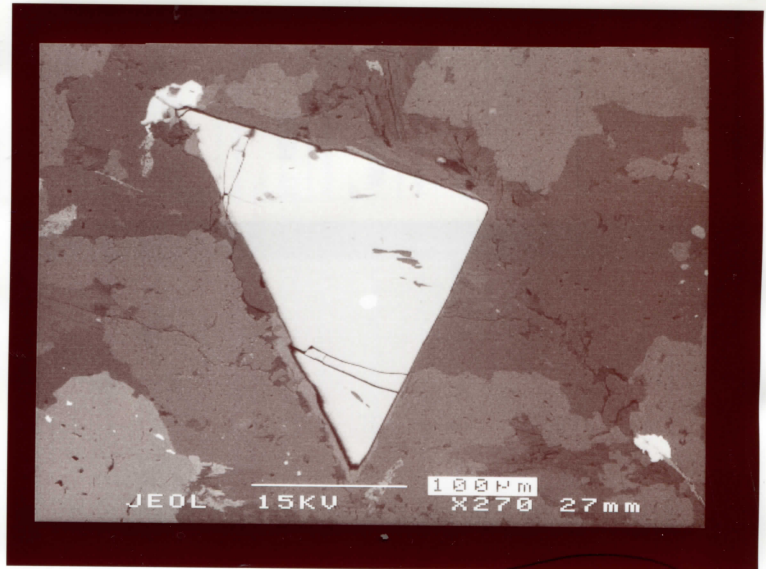
03-125 A1

93WC-5



fo cernut e pyroth

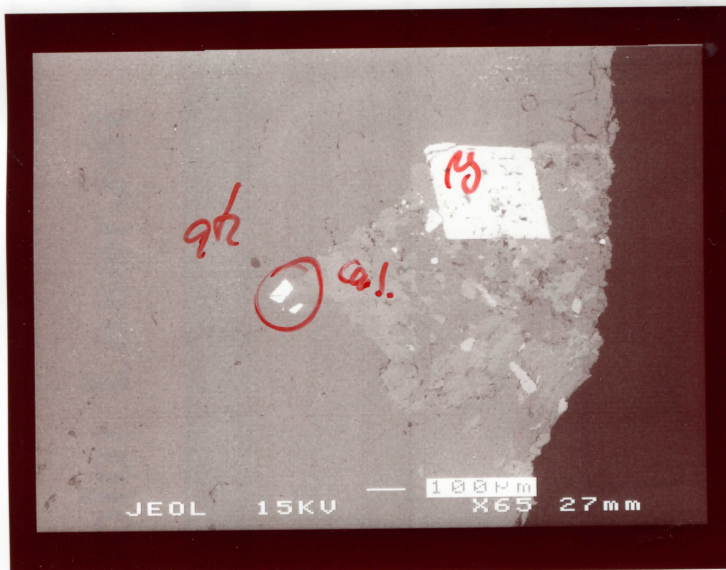
93WC



K marantite in pyroth

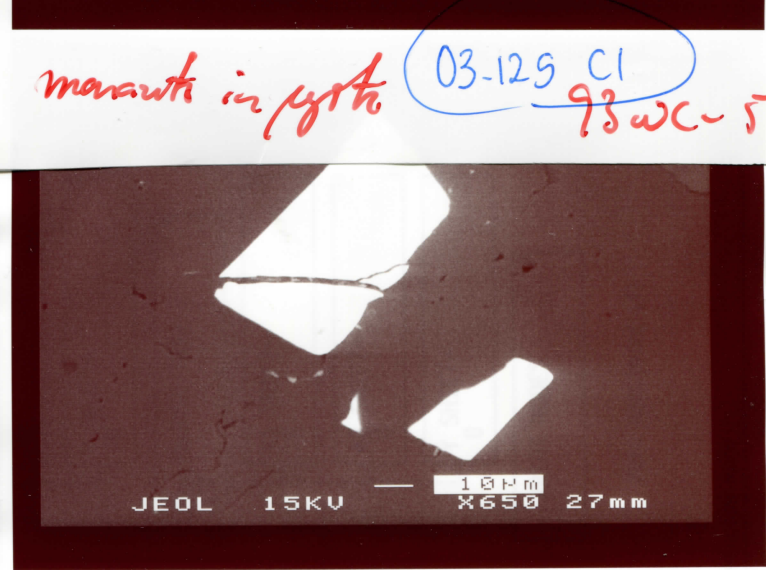
03-125 C1

93WC-5



(J) "U" only peak

93WC-



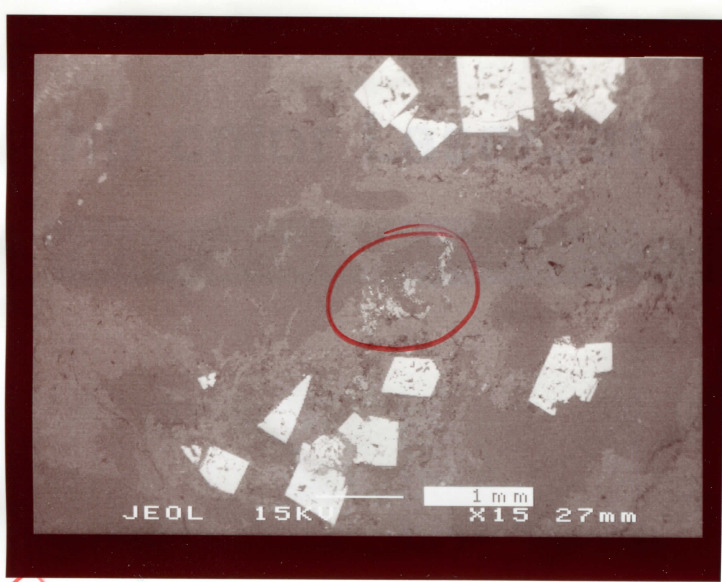
marantite in pyroth

03-125 C1

93WC-5

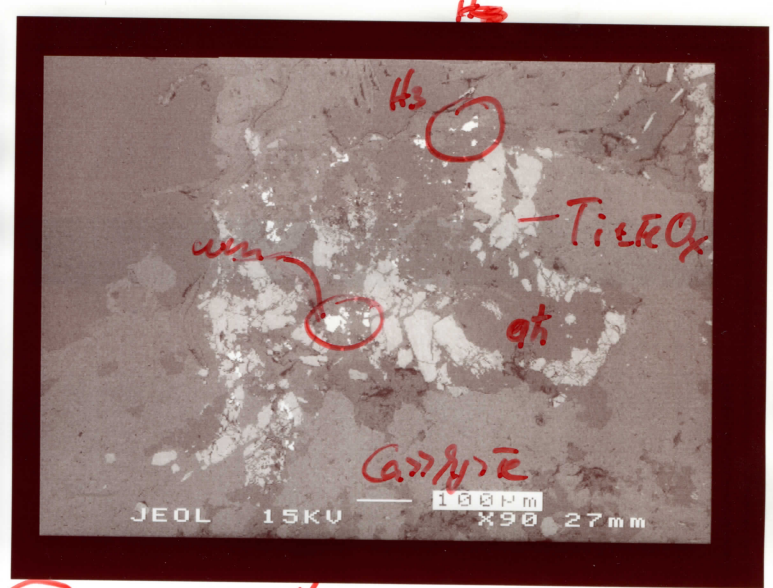
(J) UO₂?

93WC-5



H_1 monite

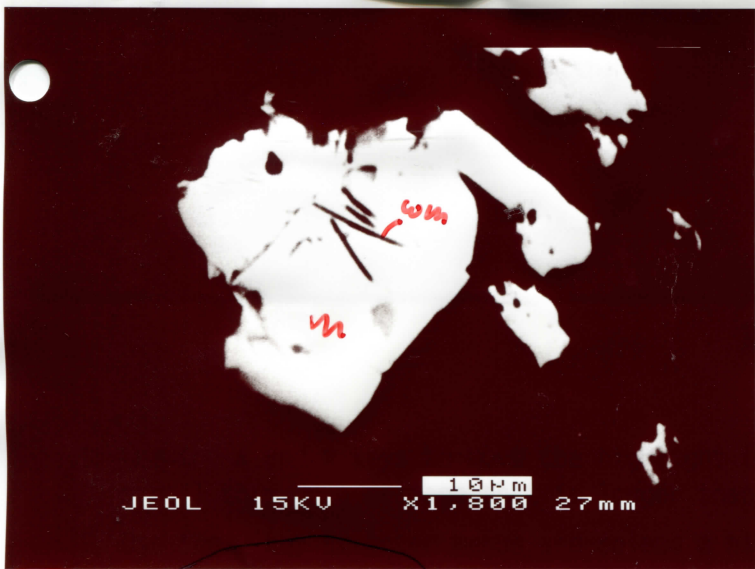
93WC-5



H_2

H_2

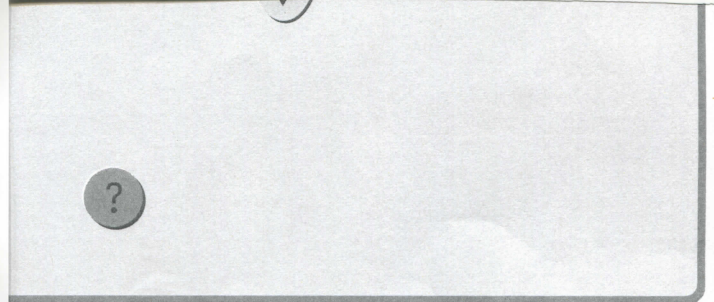
93WC-5



H_2

03-125 B1

93WC-5

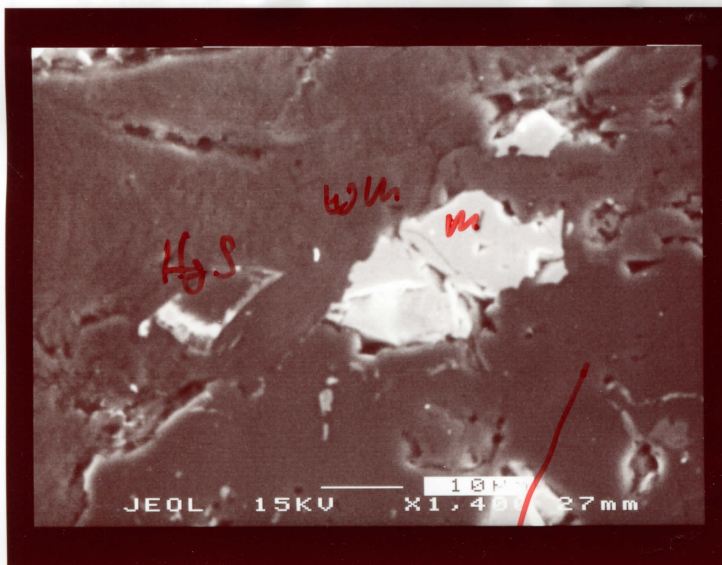


the previous and next item in a list or one screen.

lighted item. If a value is highlighted asterisk is placed next to the value to mark

tion.

out the

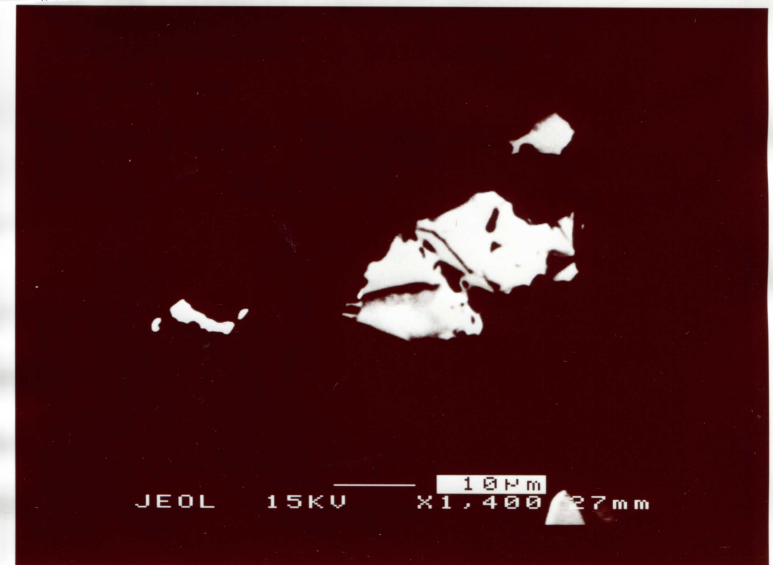


H_3 SEI

03-125 B2

elsh

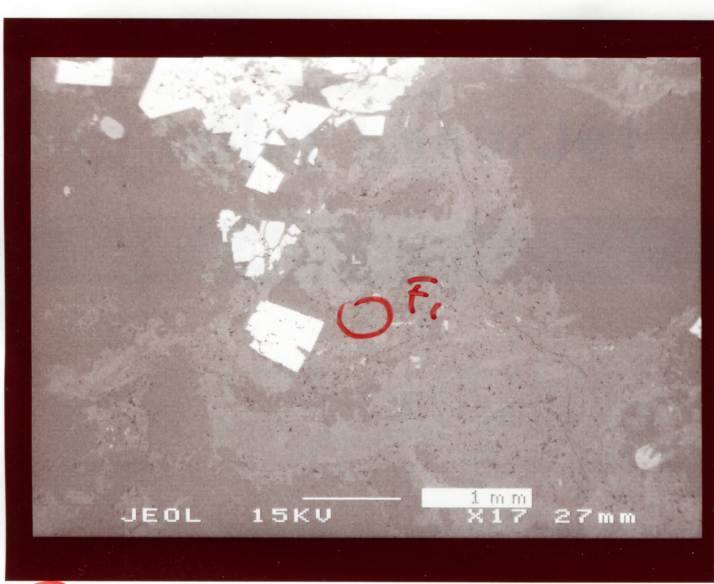
93WC-



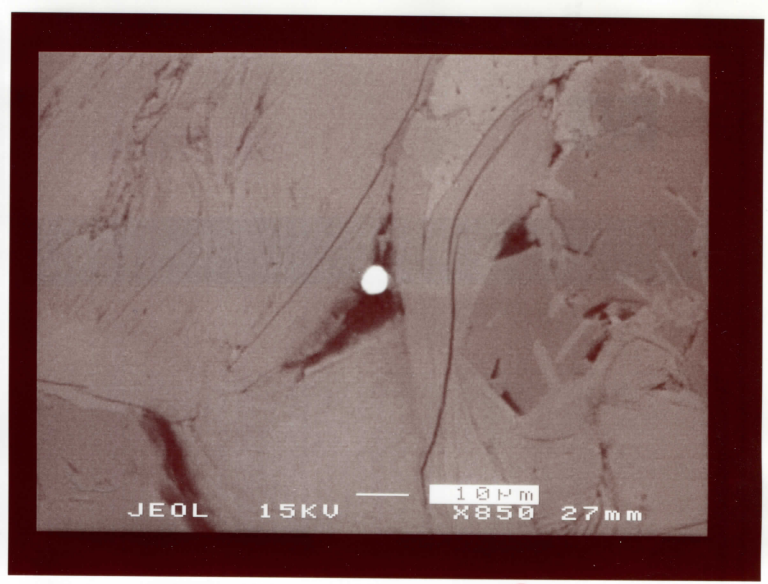
H_3

H_3S

mana



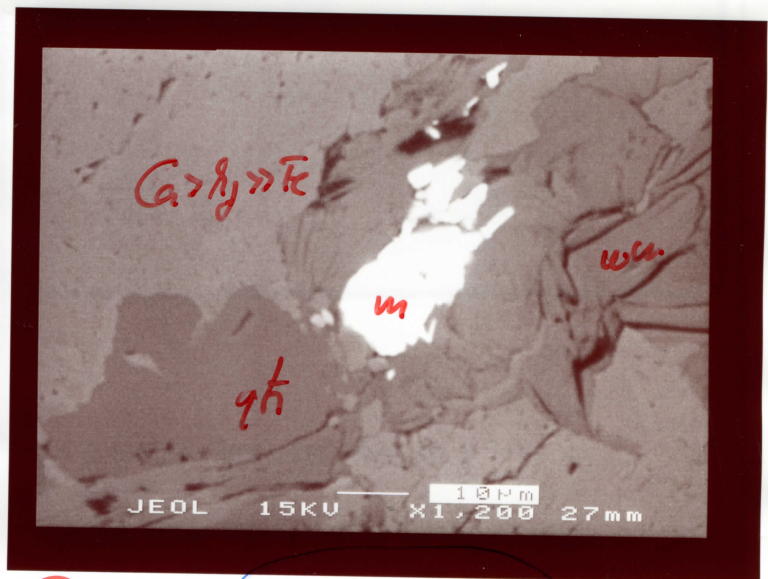
(F) Ce and no P
93WC-5



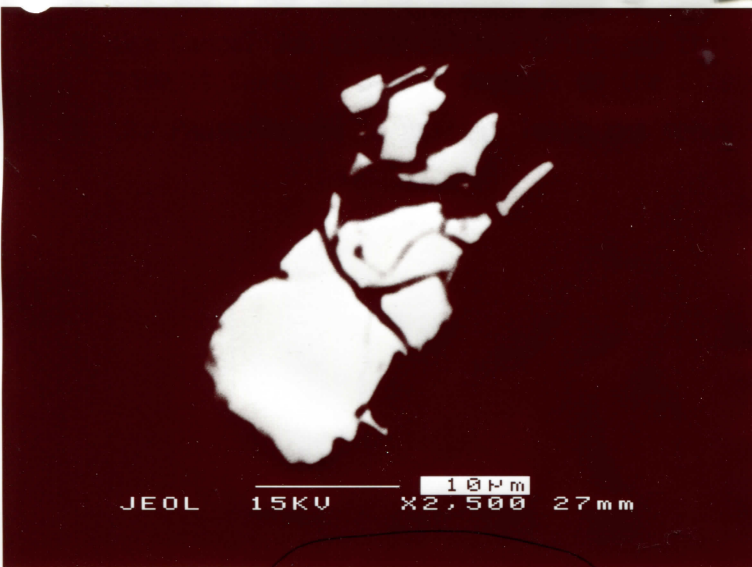
(F) Ce and only no P
in vein + qtz 93WC-5



(G) monazite G1
93WC

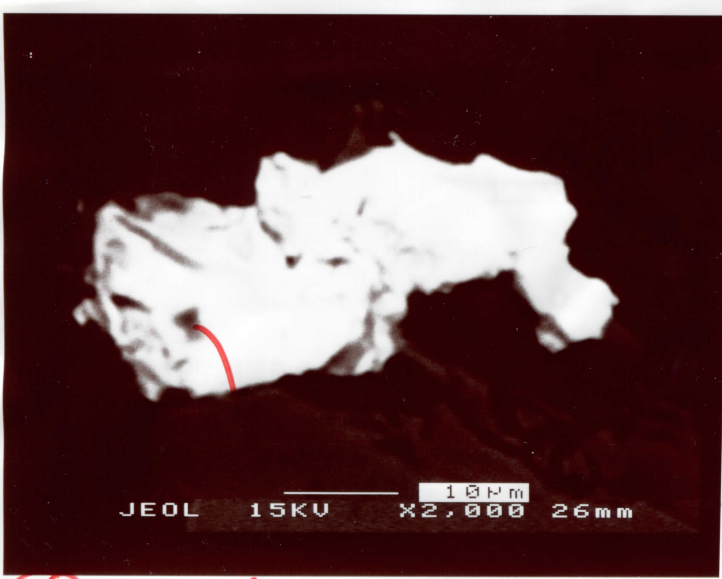


(G1) 03-125 DI
93WC 5



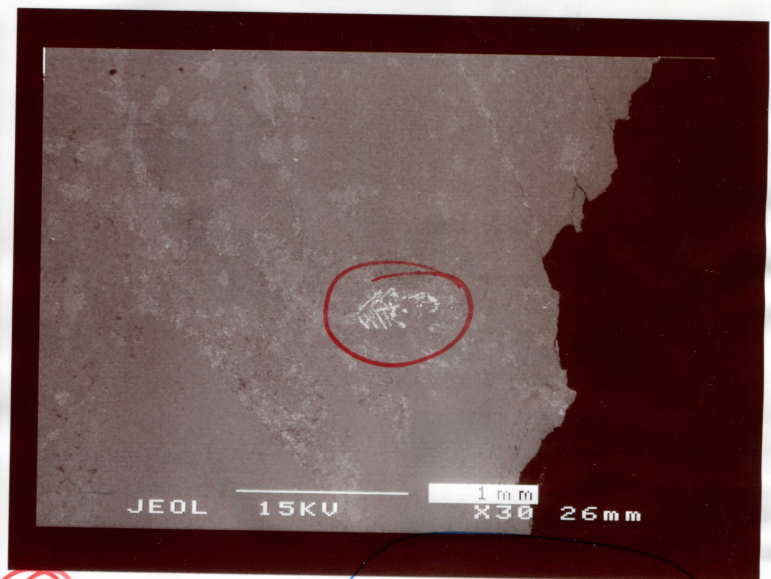
(G2) monazite 03-125 DI
93WC-5

...the currently displayed message.
...the printer is currently processing. The
...the print job.
...to toggle between READY and PAUSED.



(C₂) xenotime

I2-3₂



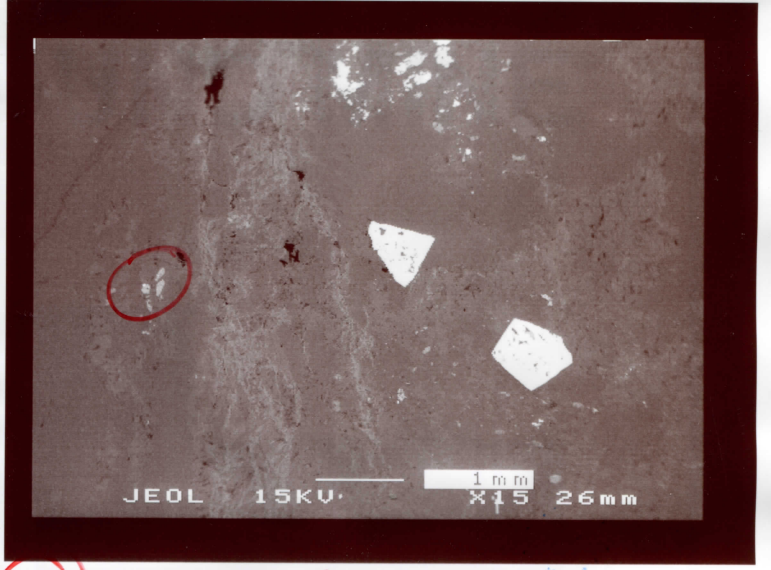
(D) monazite

03-125M
I2-3₂



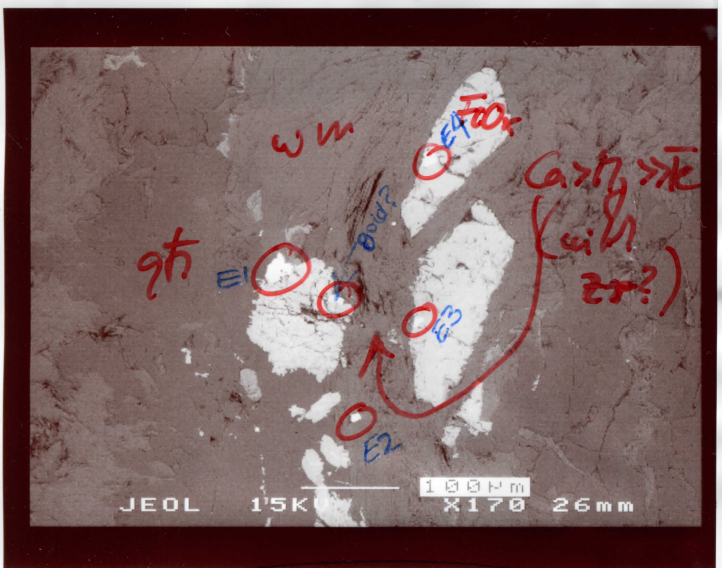
(D₁) monazite 03-125 M1

I2-3₂



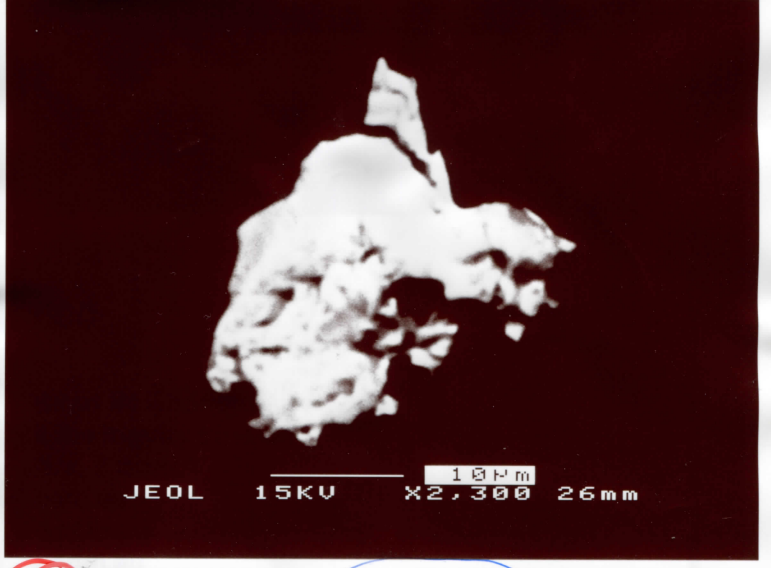
(E) monazite

I2-3₂



(E₁) monazite 03-125 E1-4

I2-3₂



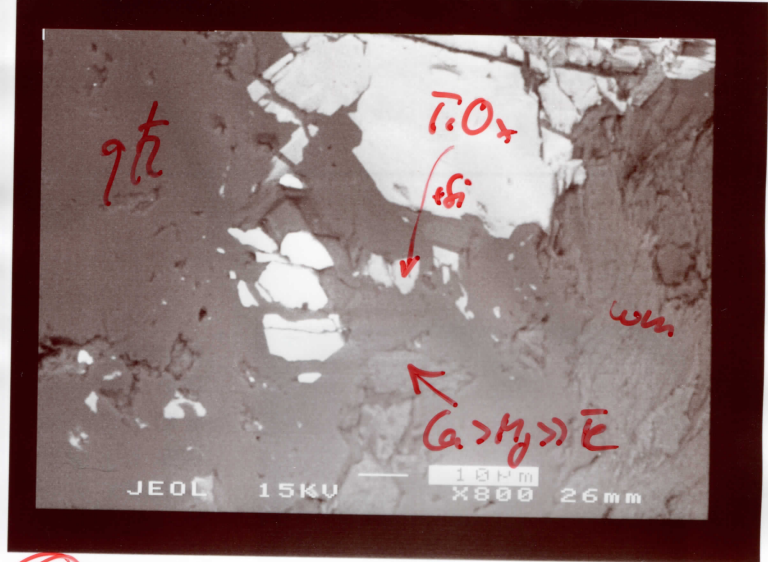
(E₂) monazite 03-125 E1

I2-3₂



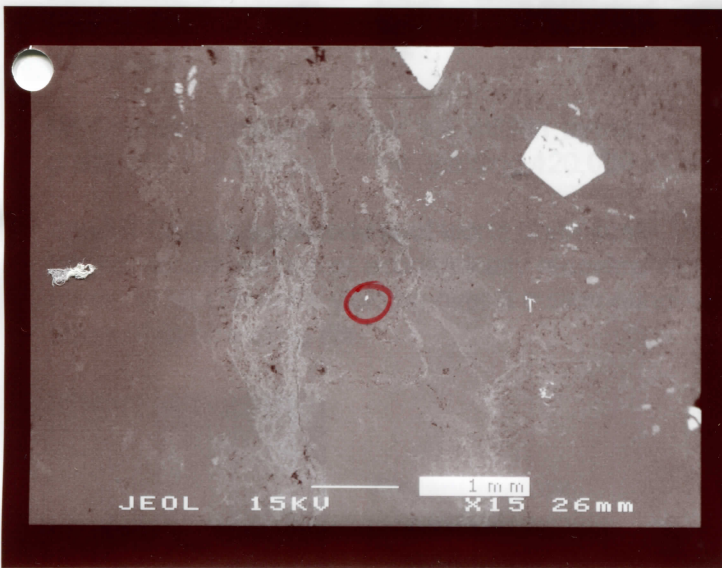
(F) monite

I2-32



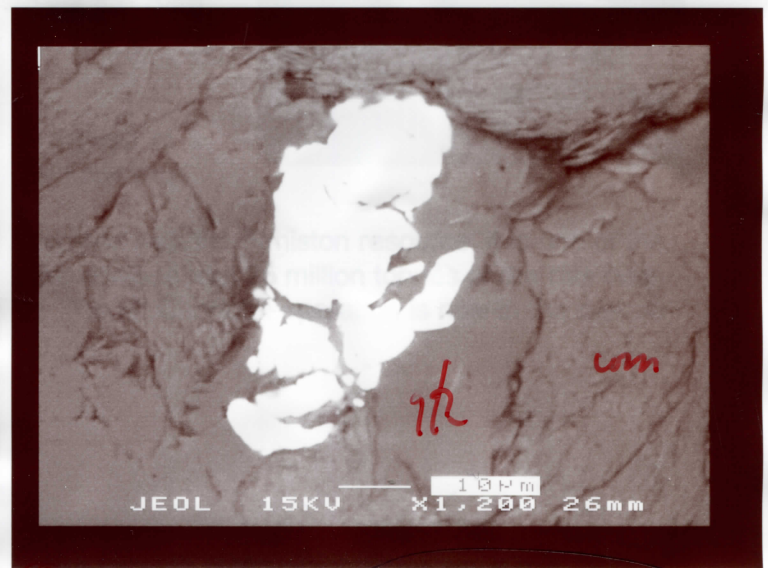
(F1) monite

I2-32



(G) monite

I2-32



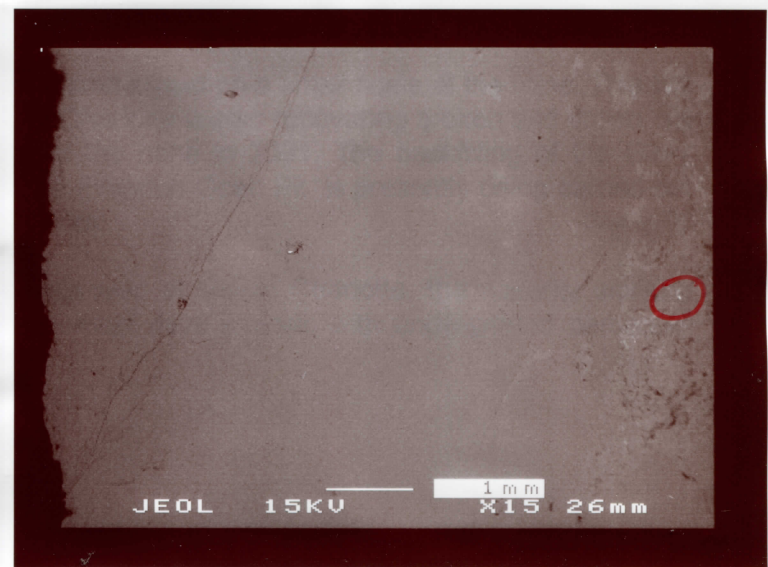
(G1) monite

03-125 F1
I2-32



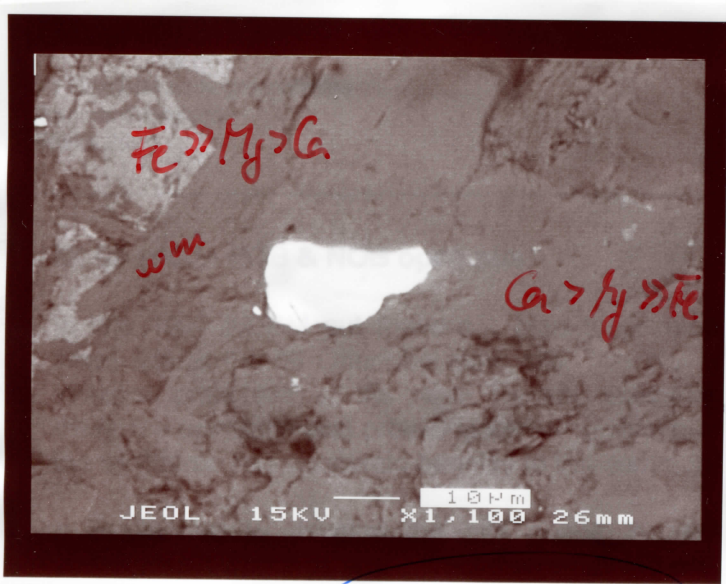
(G2) monite

03-125 F1 I2-32



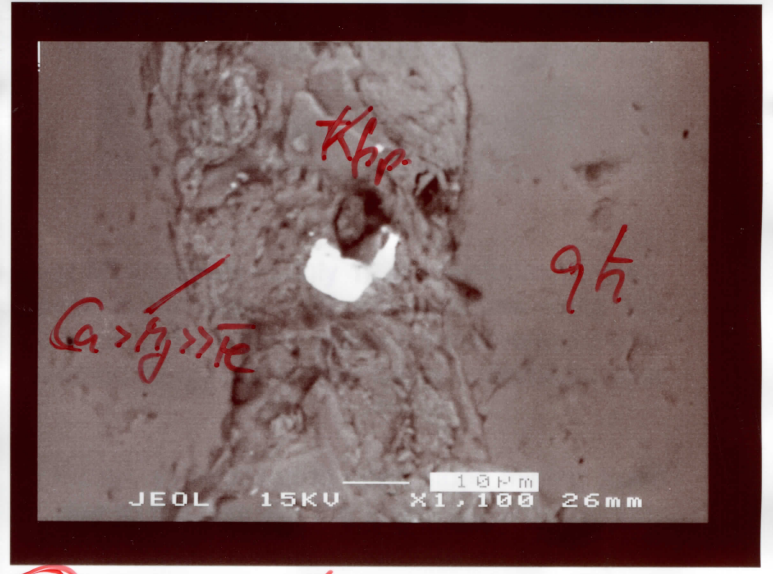
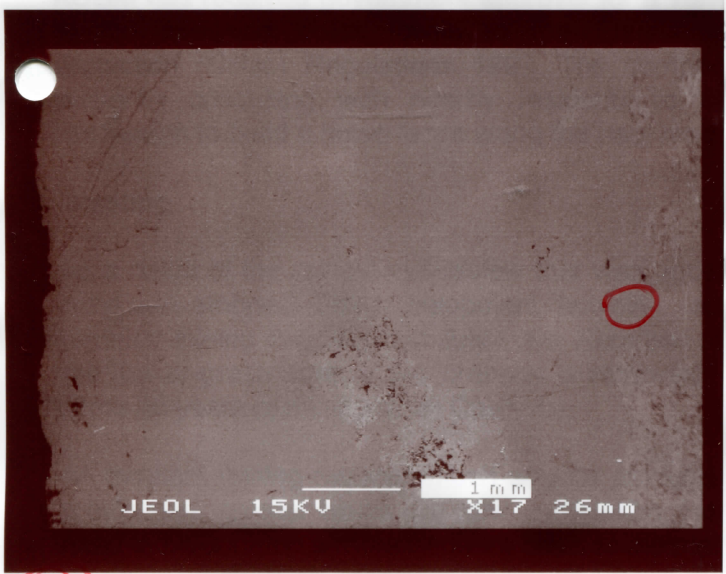
(H) monite

I2-32



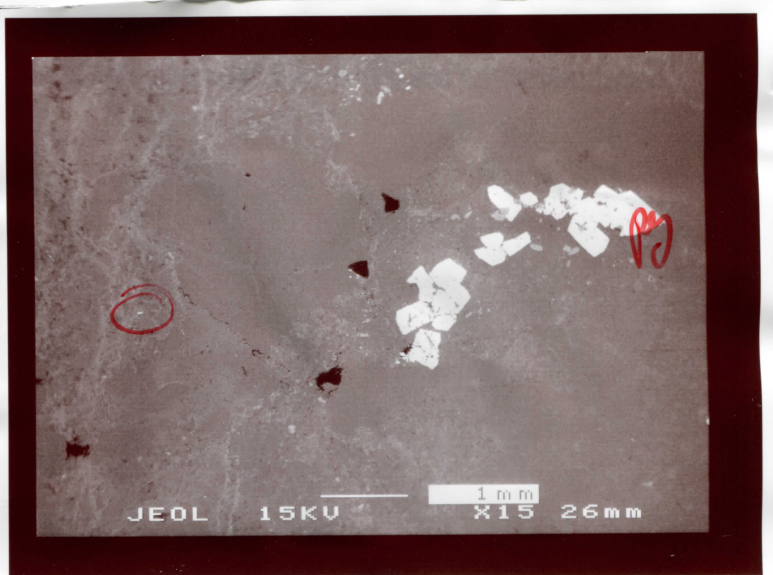
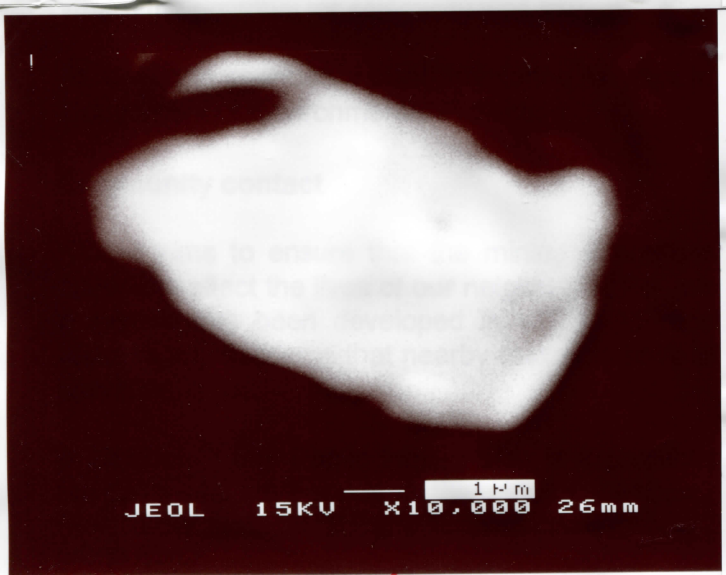
(H) *muscovite* 03-1259L I2-32

(H2) 03-125 G1 I2-32



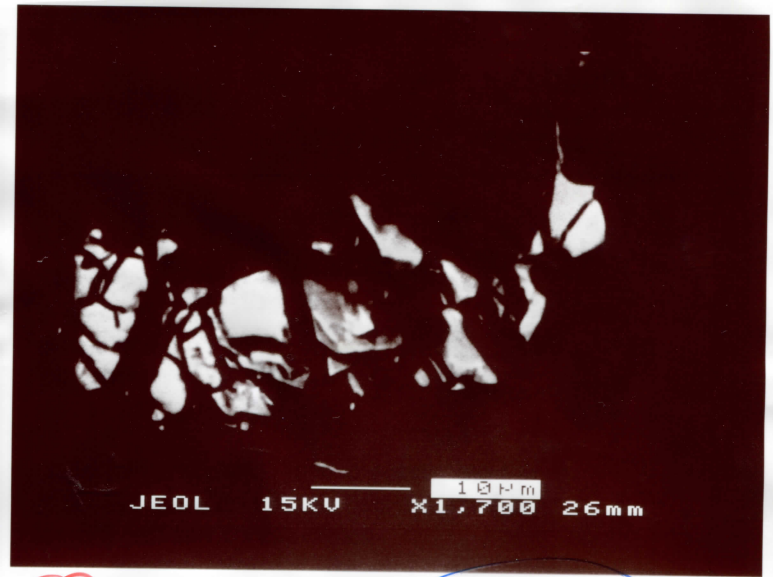
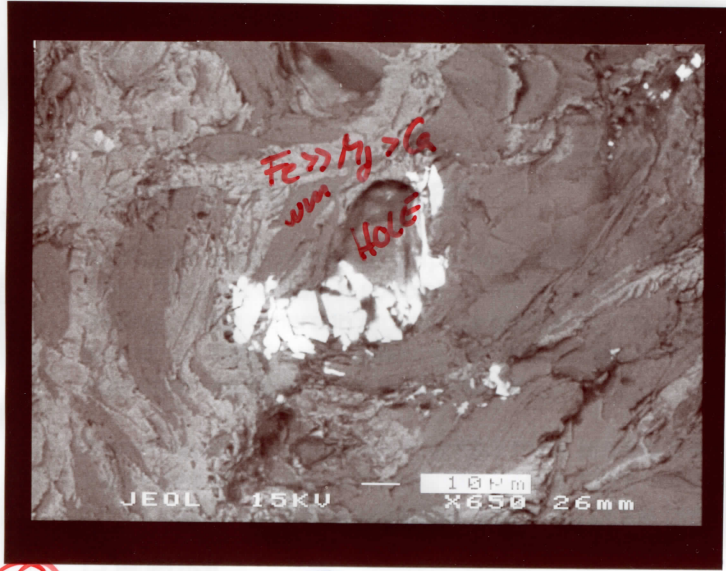
(I) *muscovite* I2-32

(I1) *muscovite* I2-32



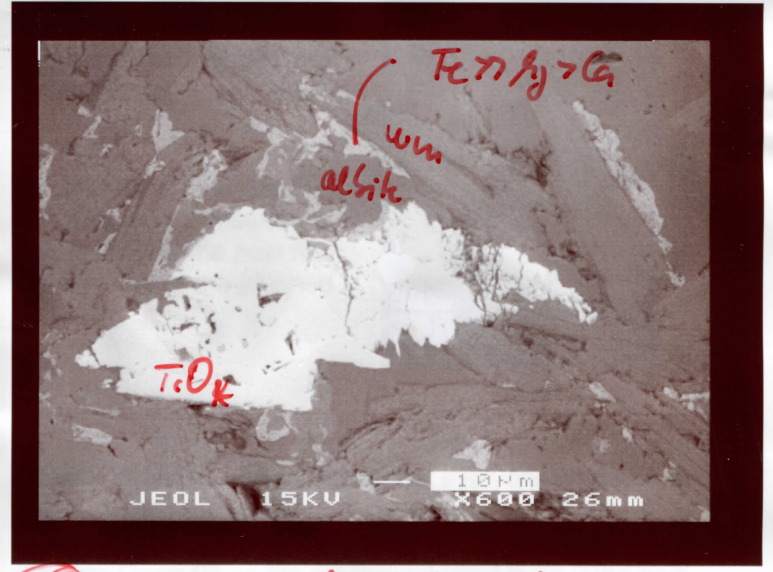
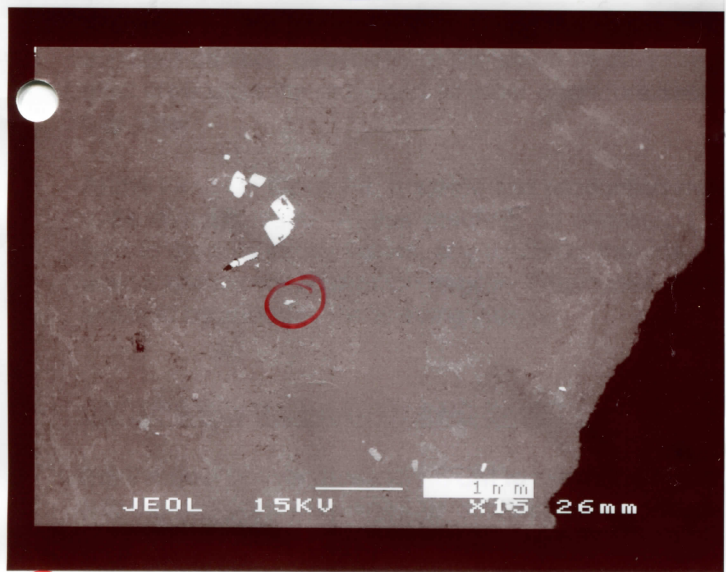
(I2) *muscovite* 03-125 H1 I2-32

(J) *muscovite* I2-32



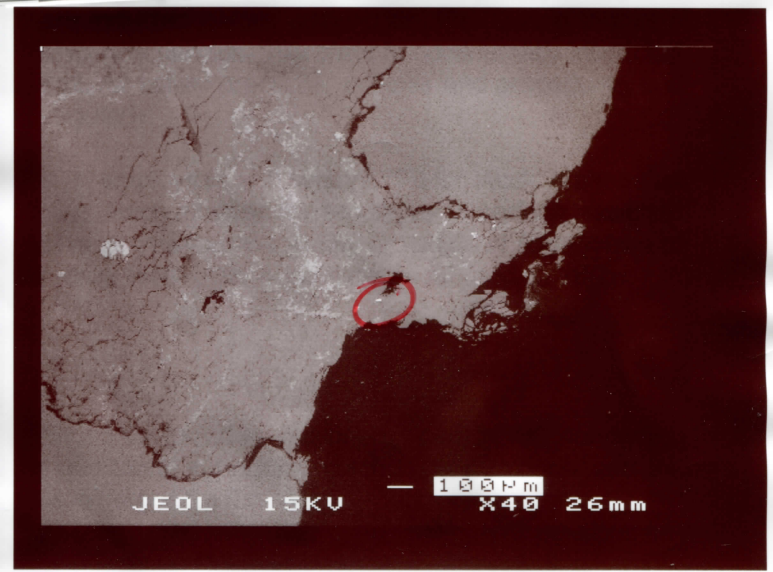
(J2) *monazite*
 03-125 I I2-32

(J3) *monazite*
 03-125 I I2-32



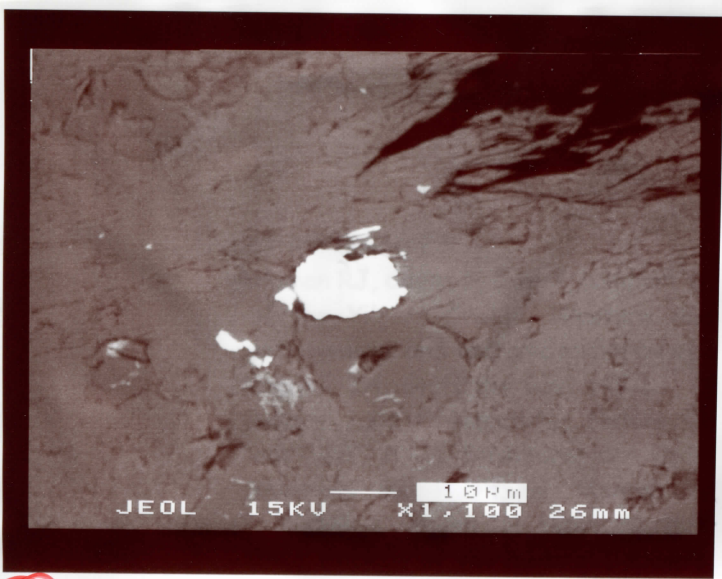
(K) *monazite*
 I2-32

(Kc) *monazite* (no Th-peak)
 03-125 JV I2-32



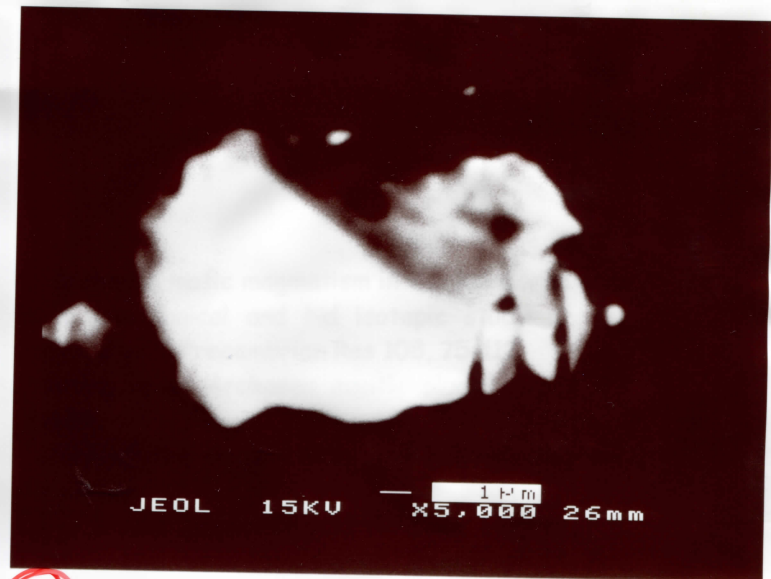
(K2) *monazite*
 03-125 JI I2-32

(L) *monazite*
 I2-32



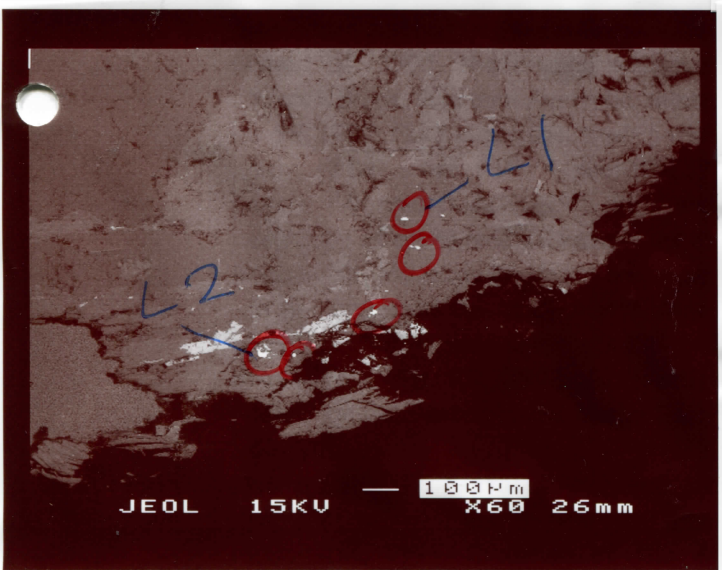
(L1) mononite

I2-32



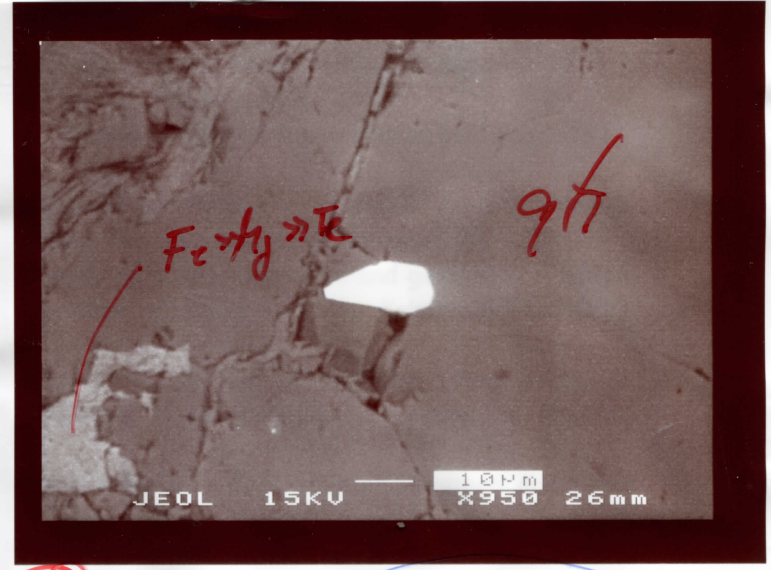
(L2) mononite

T2-2.



(M) mononite

I2-32



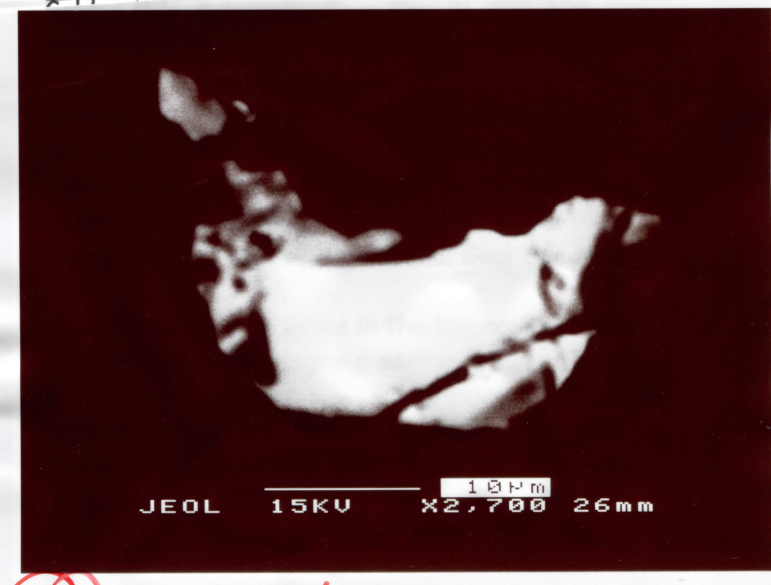
(M1) mononite 03-125 L1 I2-32



(M2) mononite

I2-32

wiped during polishing



(L3) mononite 03-125 L2 I2-32

partially broken off + wiped during polishing