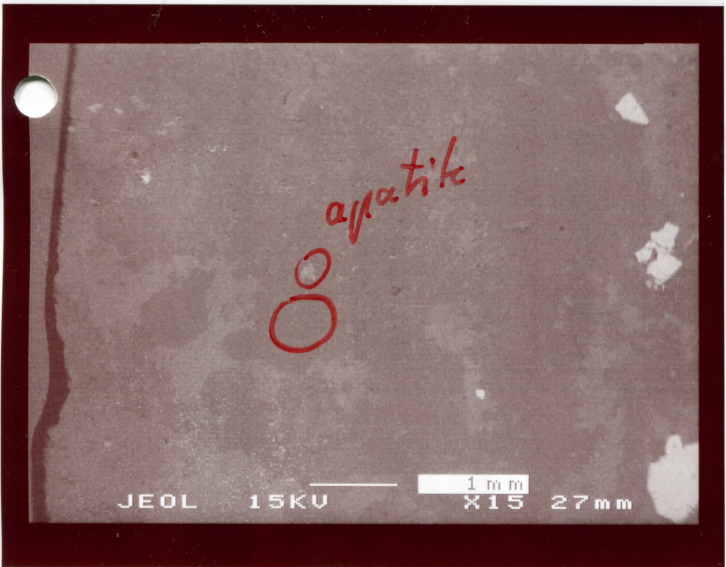


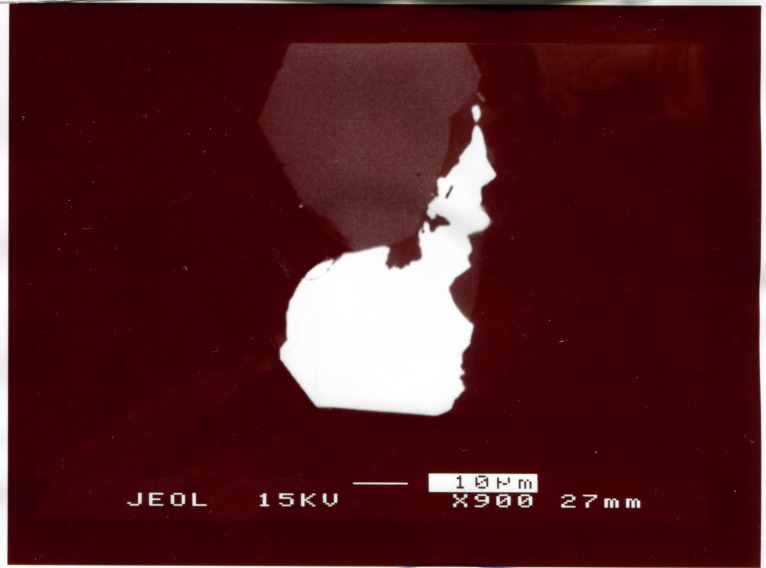
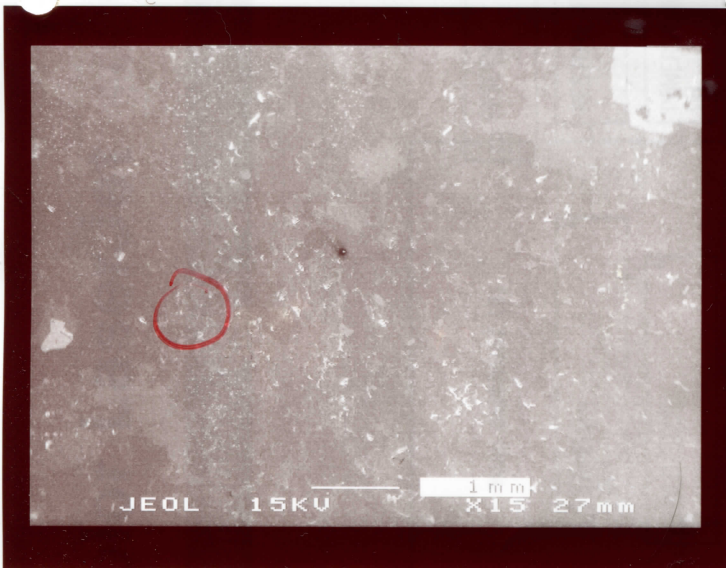
(A) 93WC-35

(A) monomite 93WC-35



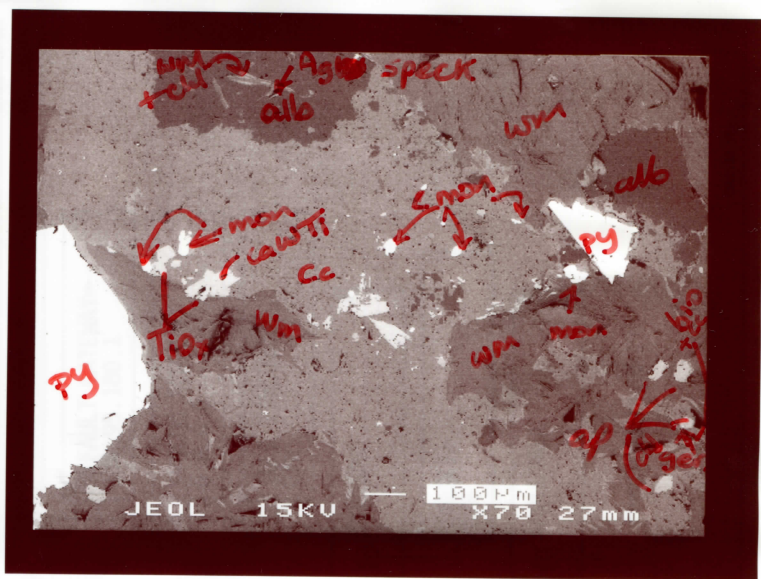
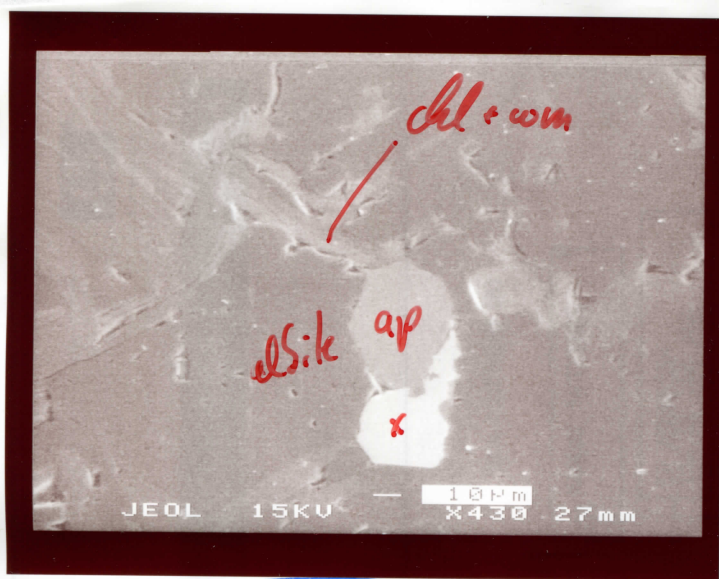
(B) 93WC-35

(B) monomite in qtz 93WC-35



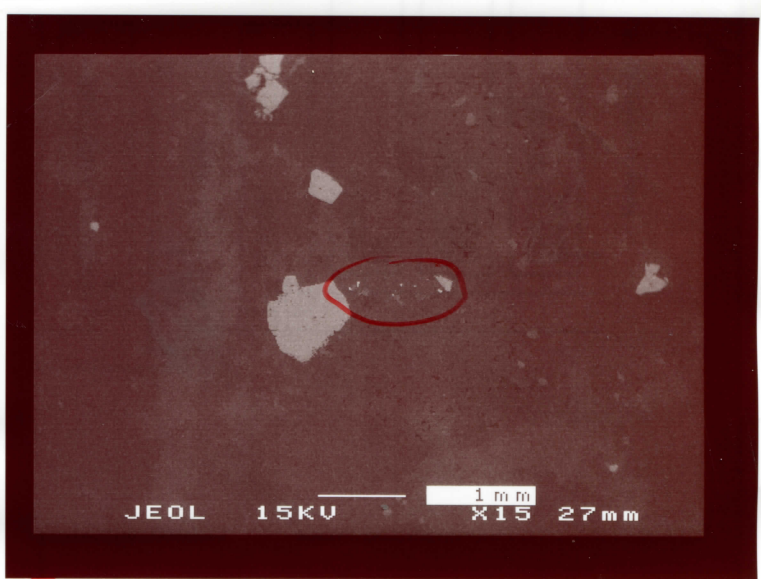
(C) 93WC-35

(C) xenotime 03-126 CI 93WC-35



(C2) 03-126 (C1) 93WC-3

93WC-35 D



(D1) 93WC-35

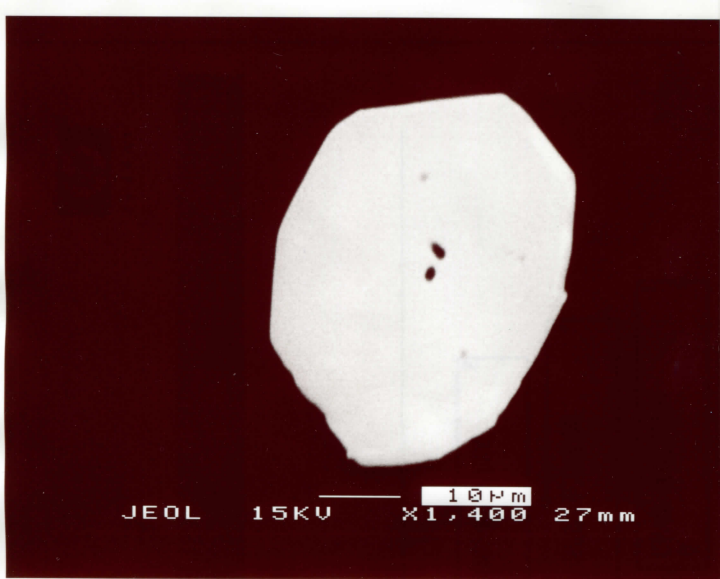
(D) D... middle of notch (↔) 93WC-35



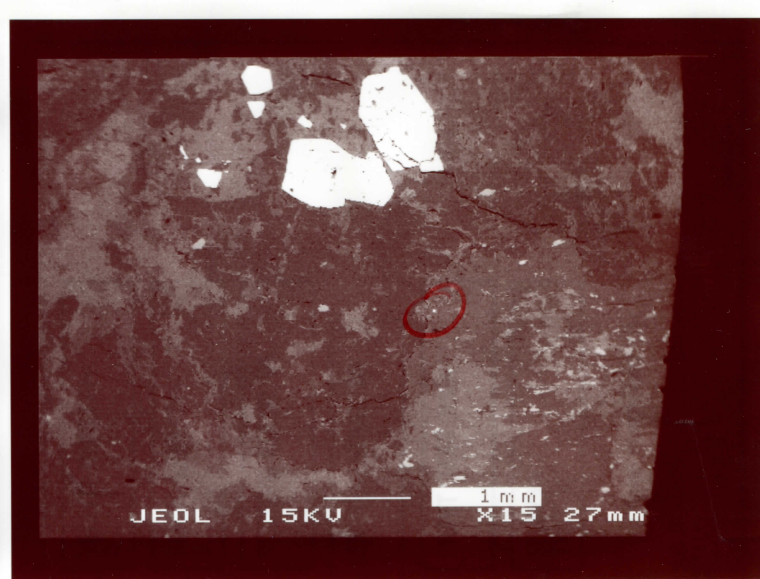
(D...) maninite in wsm

93WC-29-8 29-45

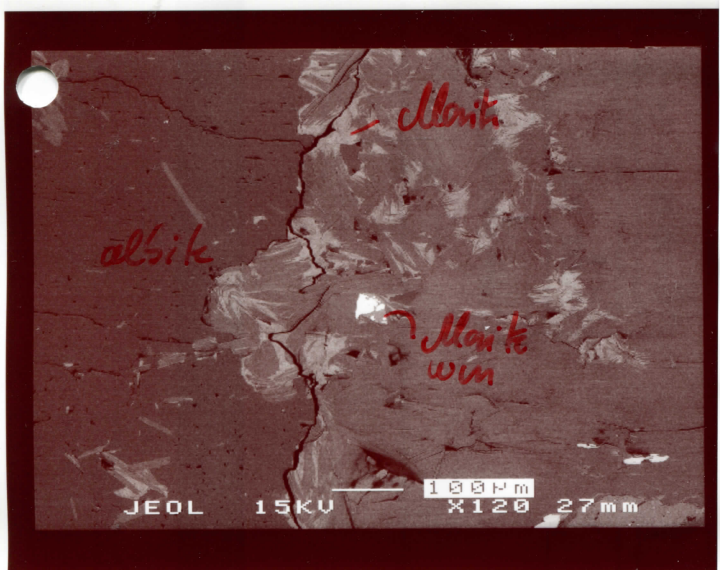
93WC-35



(FFc) apatite inclusion in zircon
93WC-3



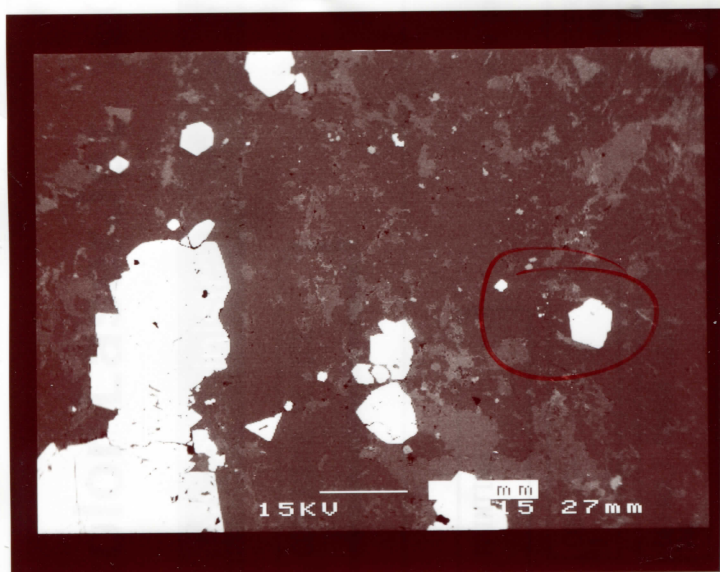
(G) xenotime
93WC-35



(G1) xenotime
93WC-35



(G2) ZnS inclusion
OB-126 DI
93WC 35

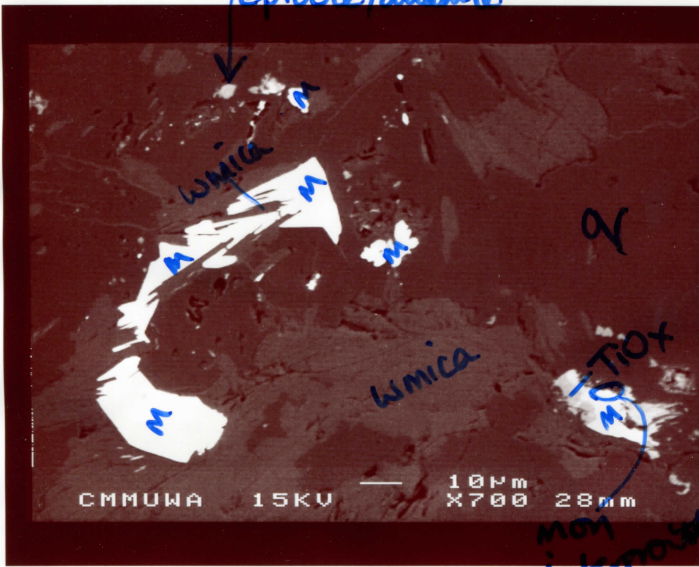


(H) H1
93WC-3



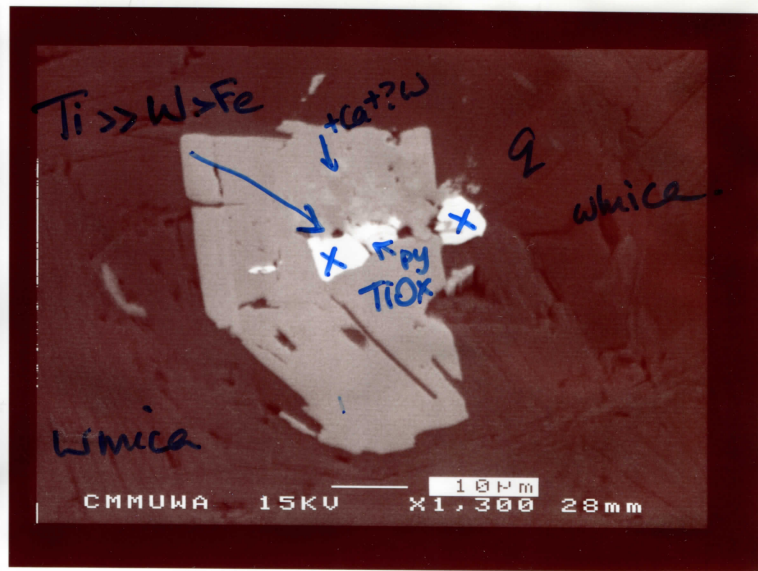
(H) H2
93WC-35

epidote/allenite.



wci-8

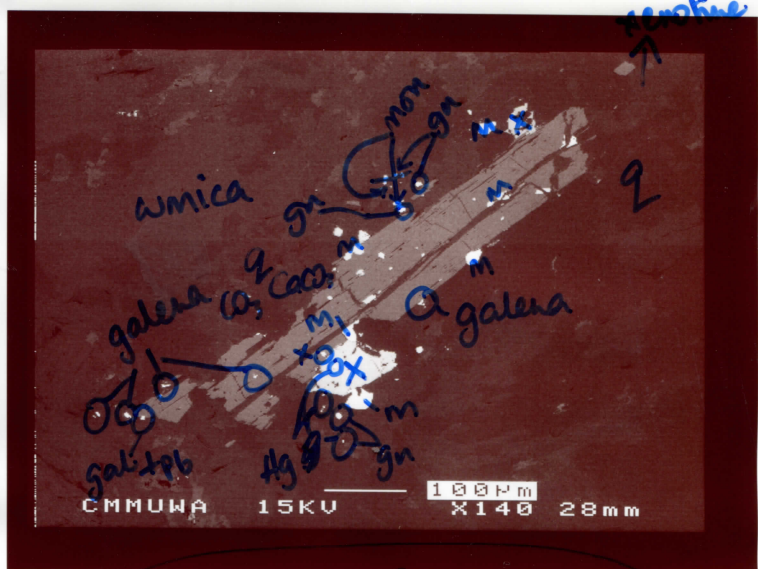
non
intergrown
w/ TiOx



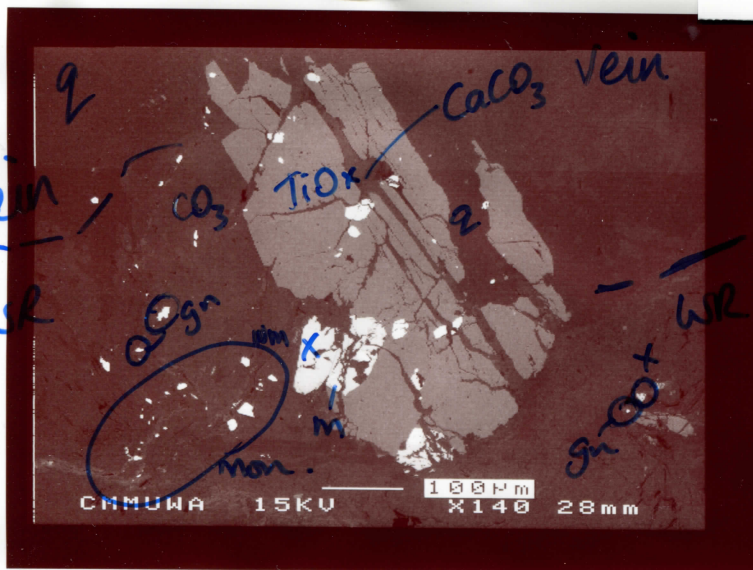
wci-9



wci-10



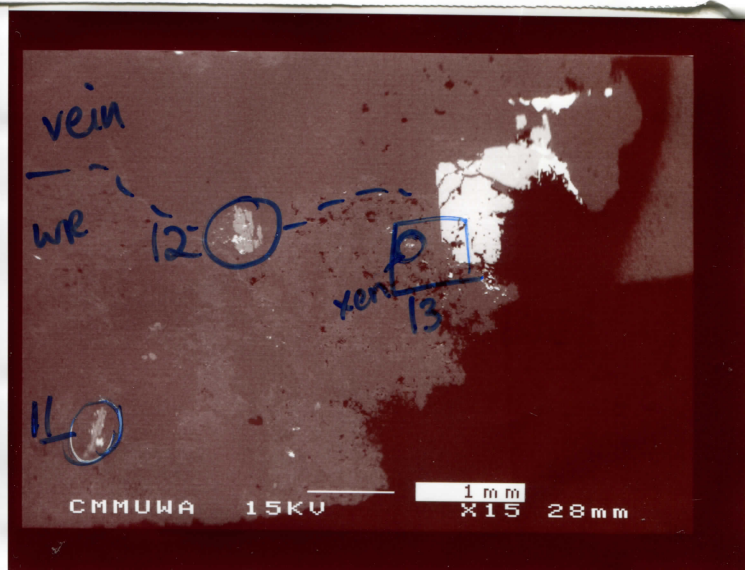
03-126 FI-24
wci-11
-E7

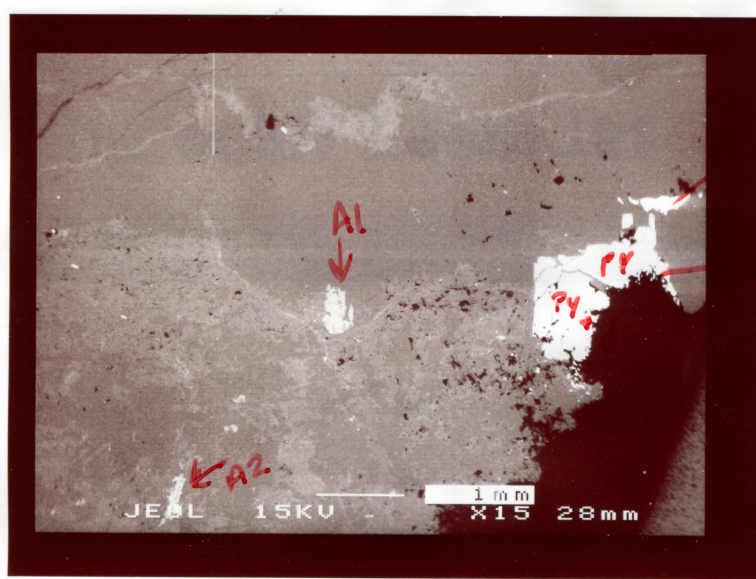


wci-12

galena clay
clearance in mica

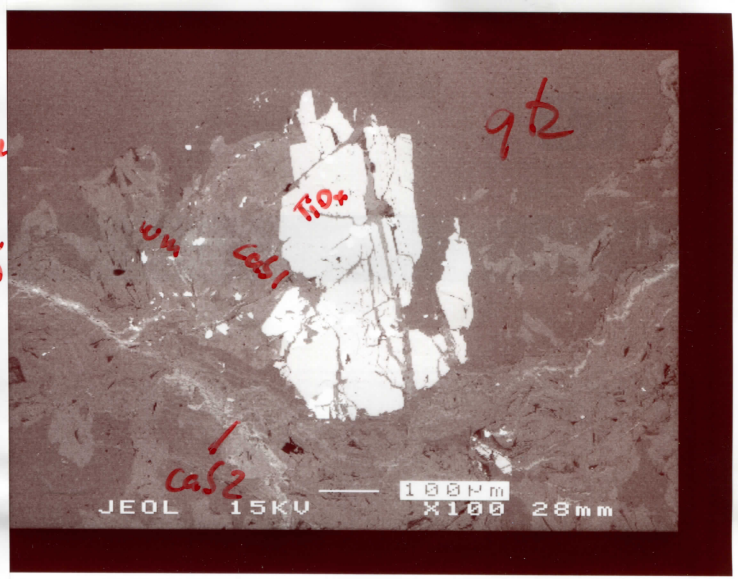
03-126 FI





WC-12-3

A



WC-12-3

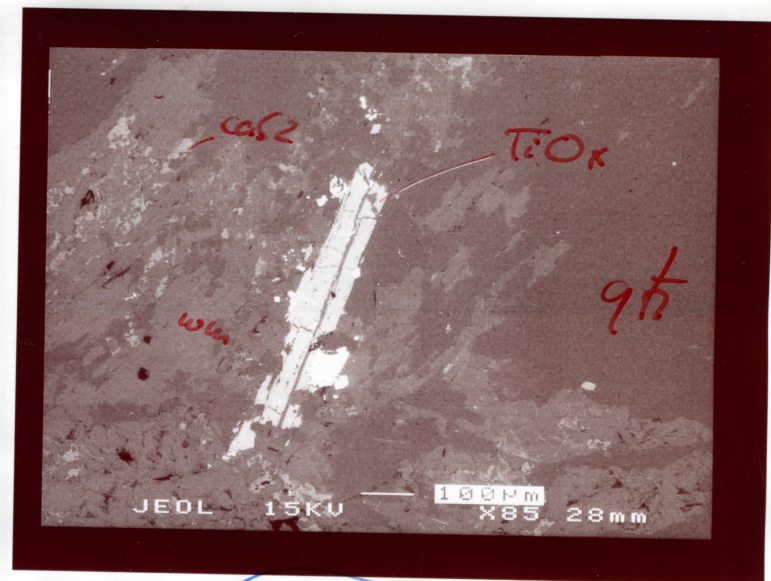
03-126 F
03-126 F

Al



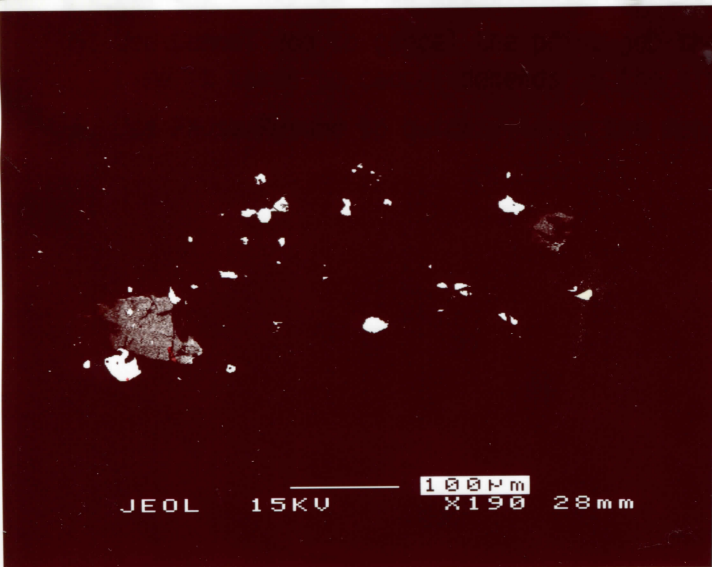
WC I2-3

03-126 F A
fky = x eno
dist amone



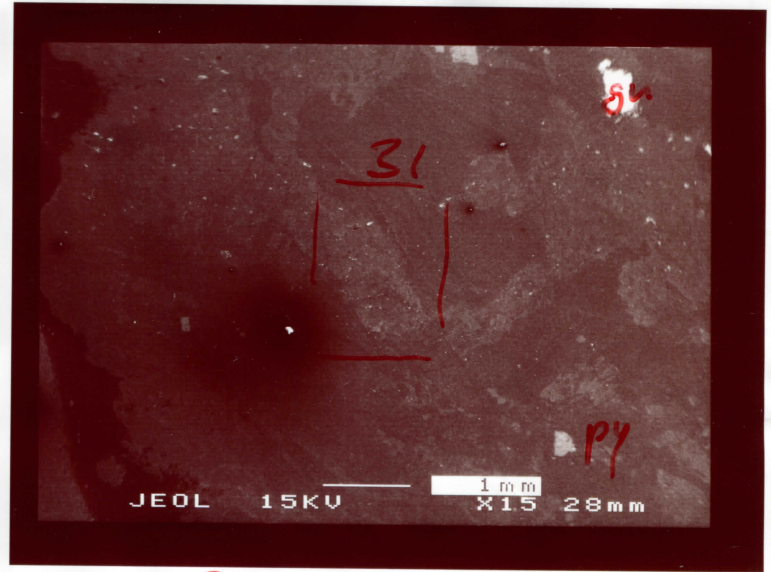
WC I2-3

03-126 E1-E7
E1-7 03-126 A2



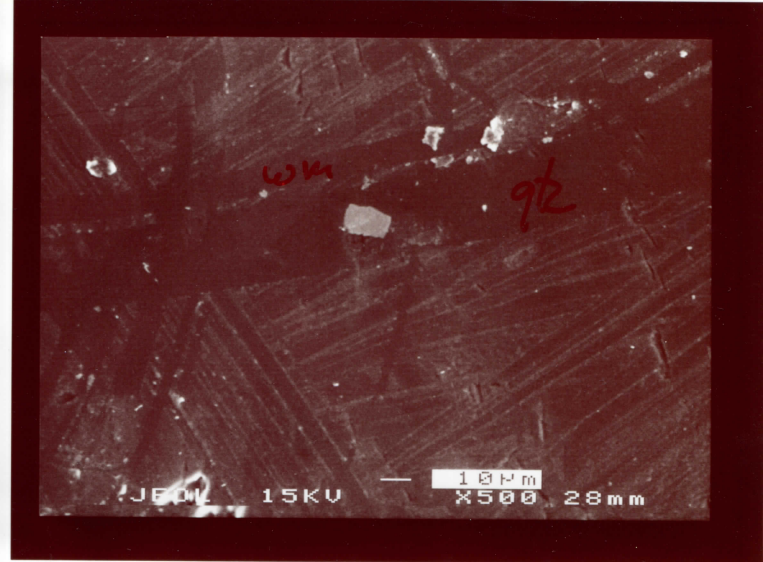
WC Kero
I2-3 mana

03-126 E1
E1-E7 A2
phosph



WC-12-3

B

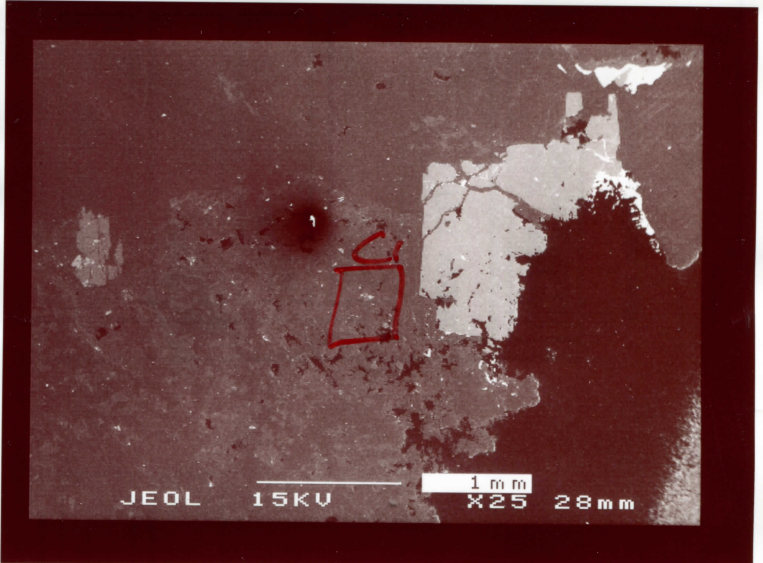
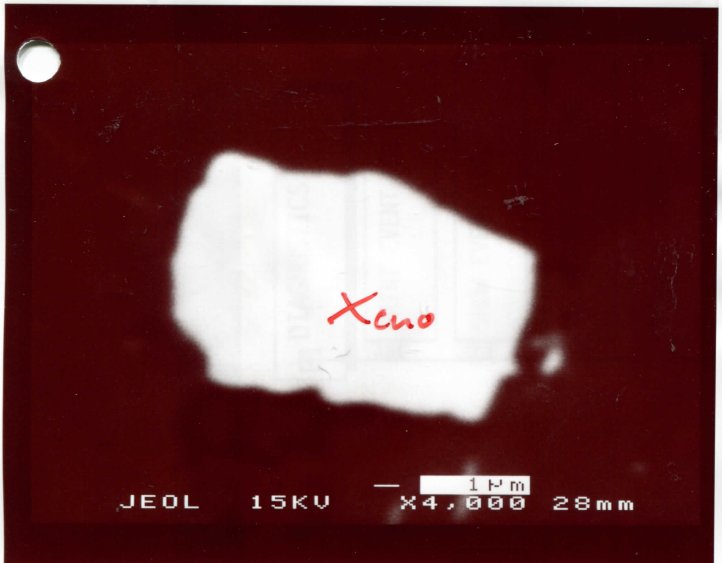


WC
I2-3

Xenotime

3 (WC
I2-3

3

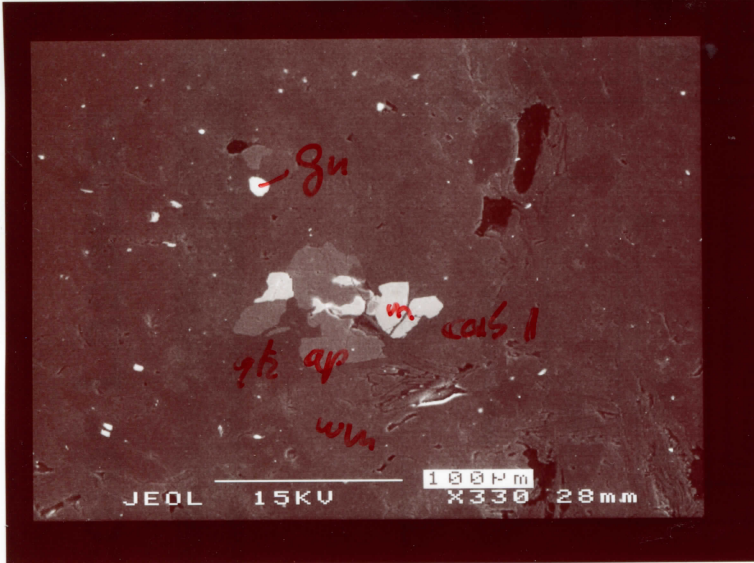


WC
I2-3

03-126 GI
03-126 GI

WC
I2-3

C

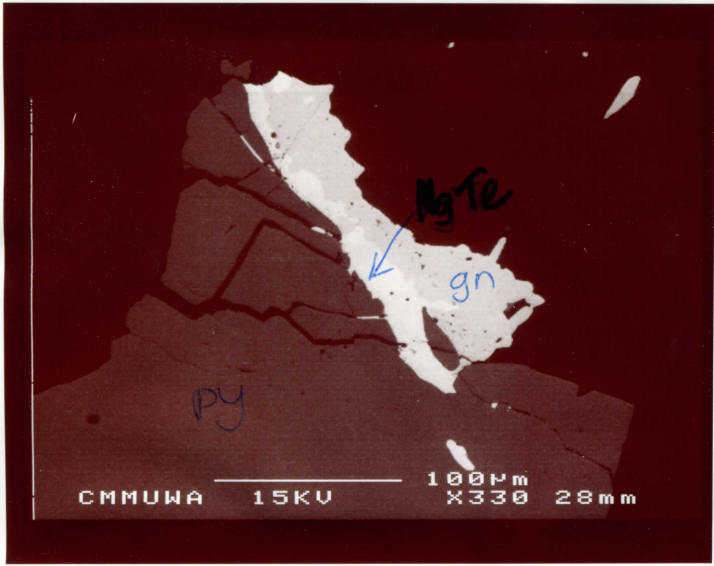


ap = apatite
m = monazite

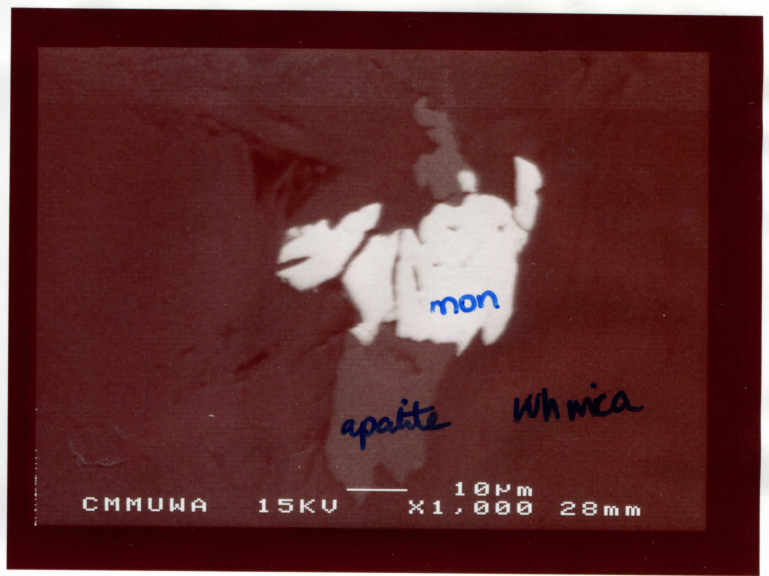
WC
I2-3

C1

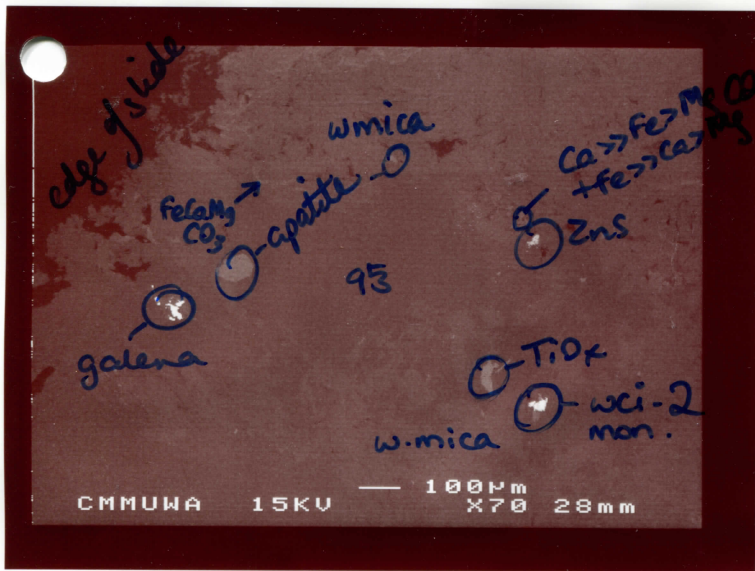
NEW NO	NEW NO
5	6
SECURE WEB= HTTPS OPTIONAL	RESET SECURITY= NO
7	LINK SPEED= AUTO



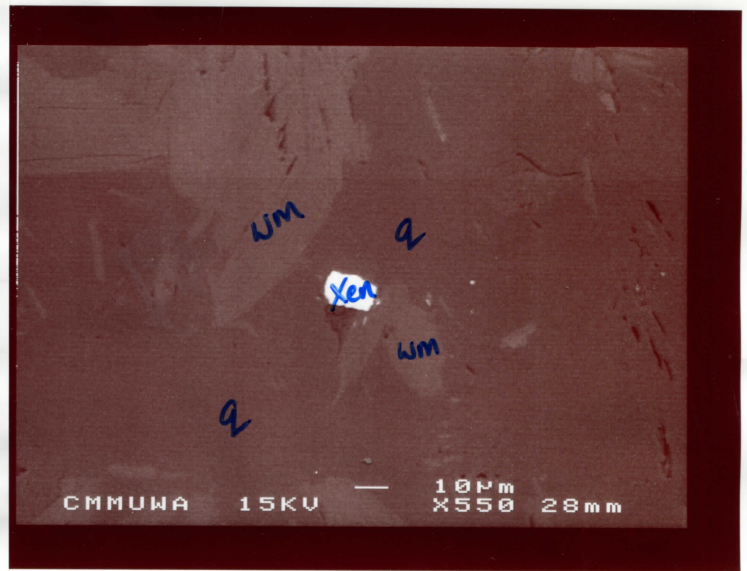
123-1 Wci-1



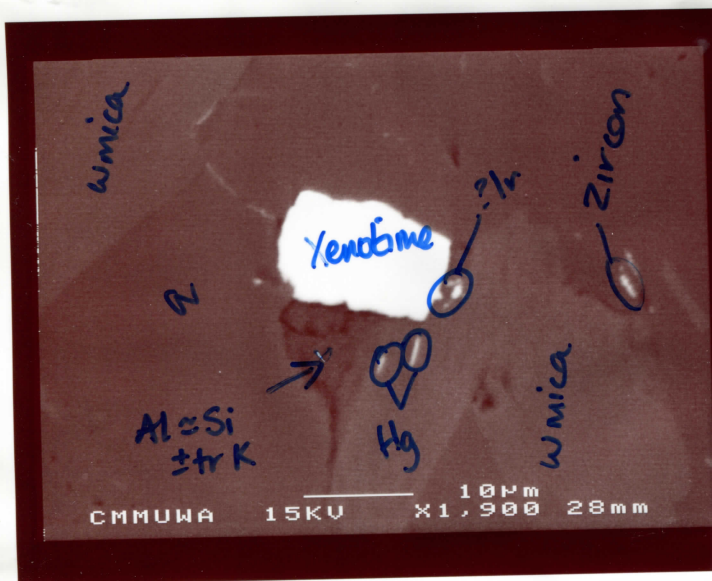
wci-2



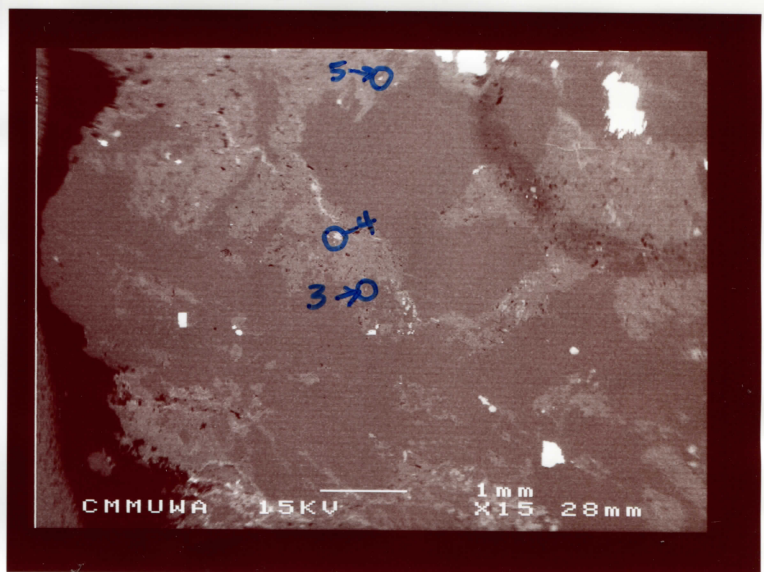
wci-2b



wci-3b

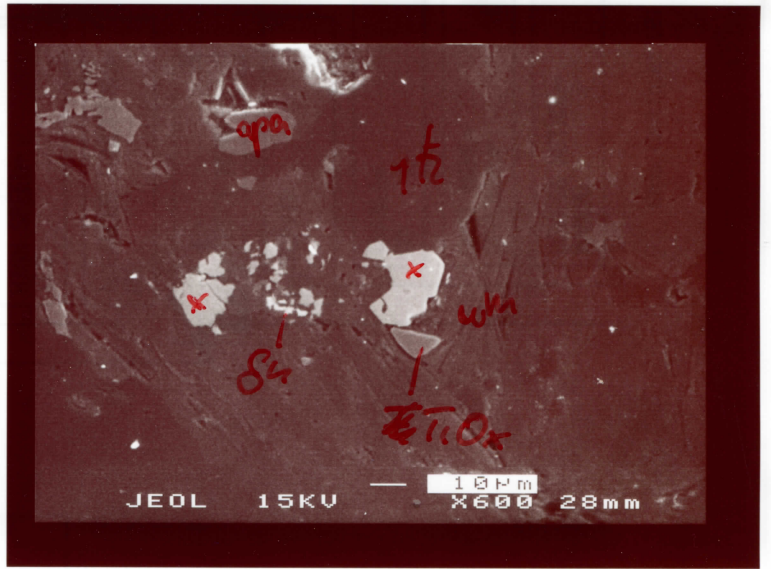
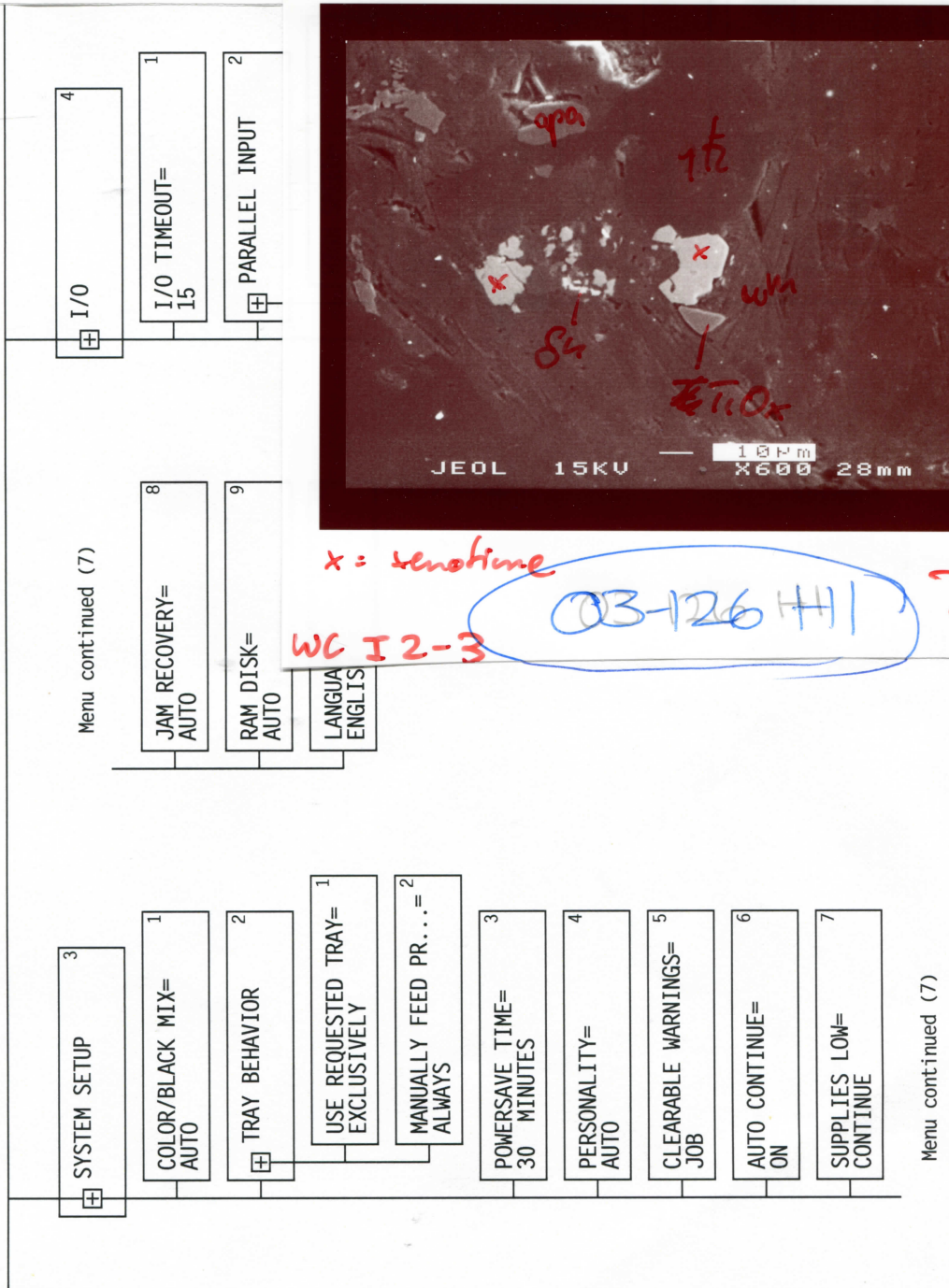


wci-3 03-12691
03-12691

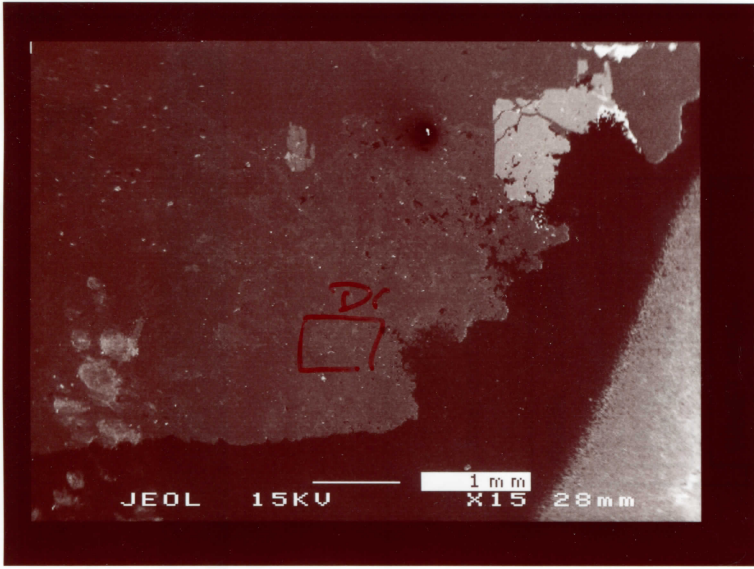


hp color LaserJet 4600 printers

menu map (administrative functions)

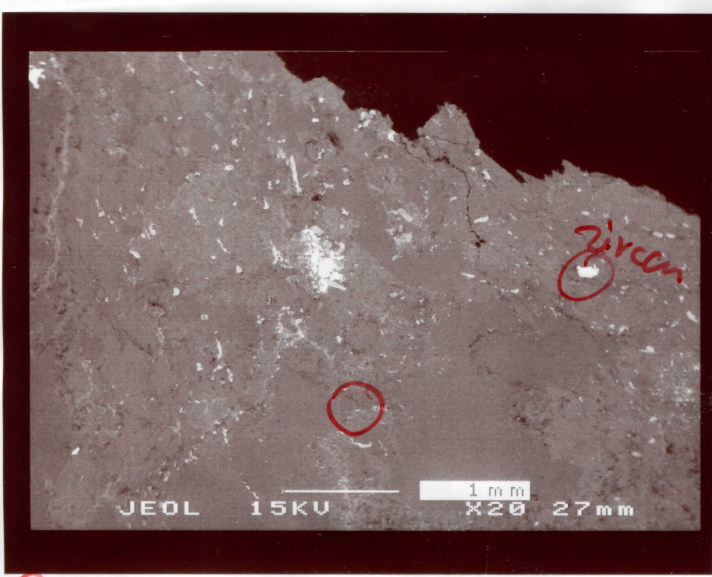


WC I2-3
 x = xenotime
 03-126 H11
 DI



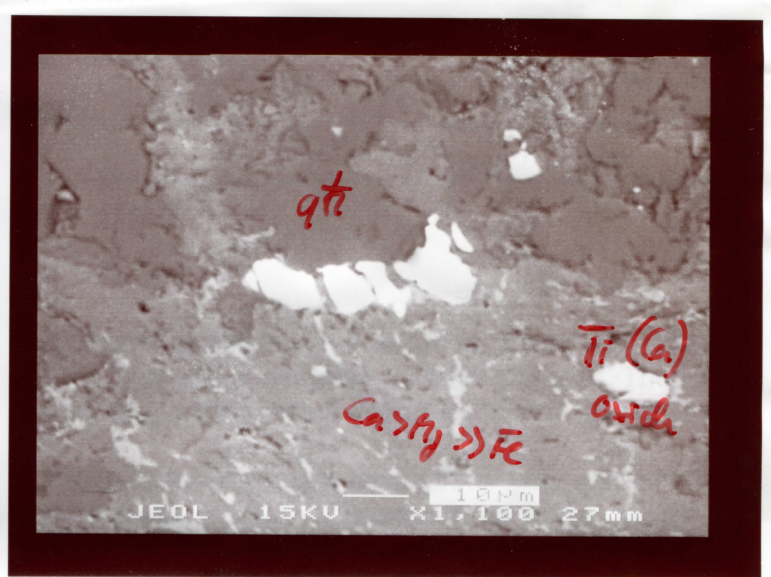
WC
 I2-3

D



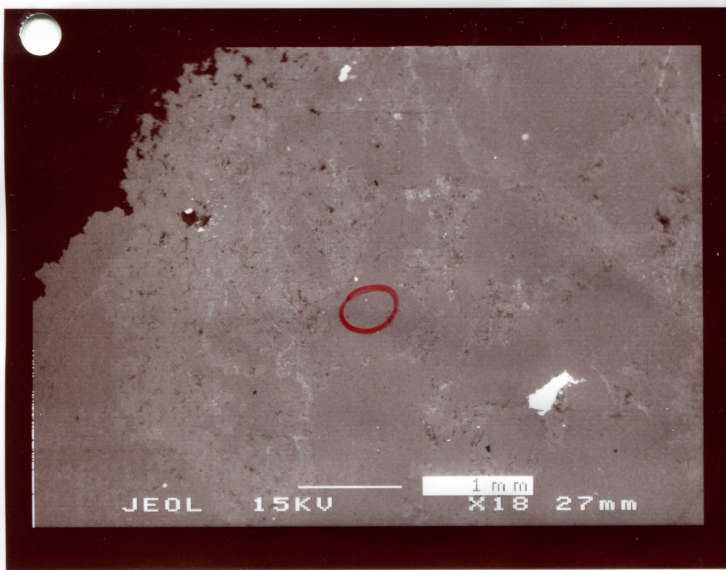
(A) monazite A1

I 2-3,



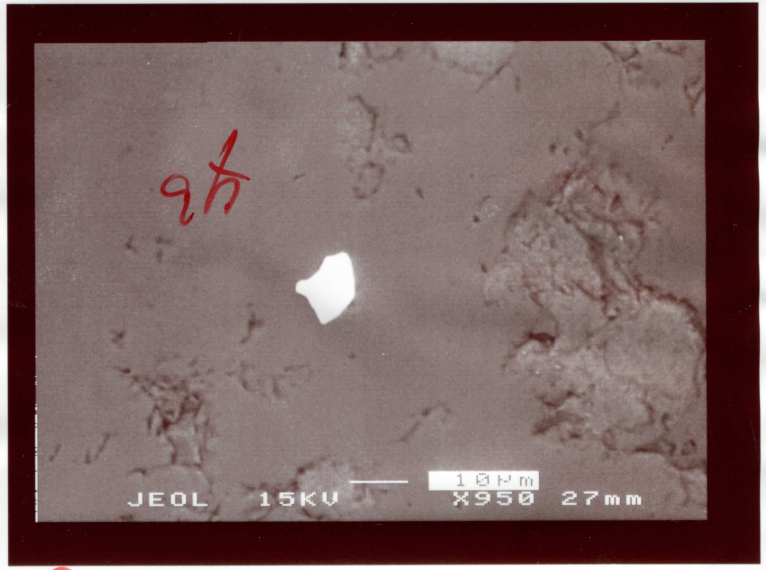
(A₁) monazite

I 2-3,



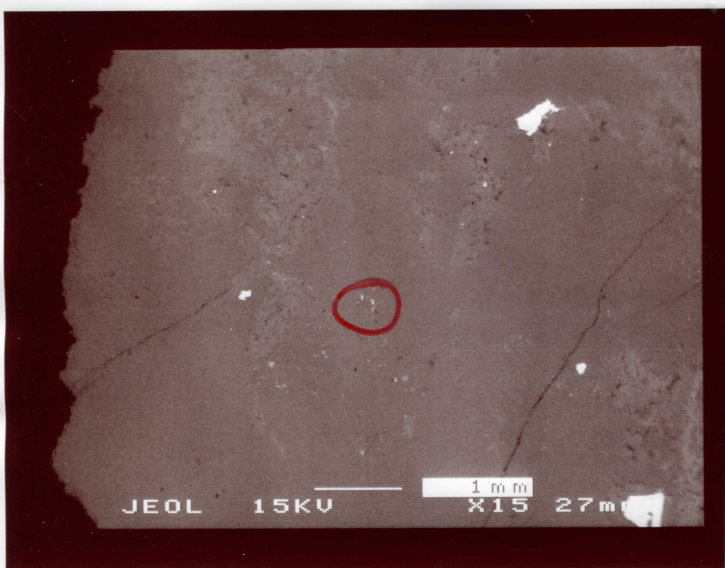
(B) monazite B₁

I 2-3,



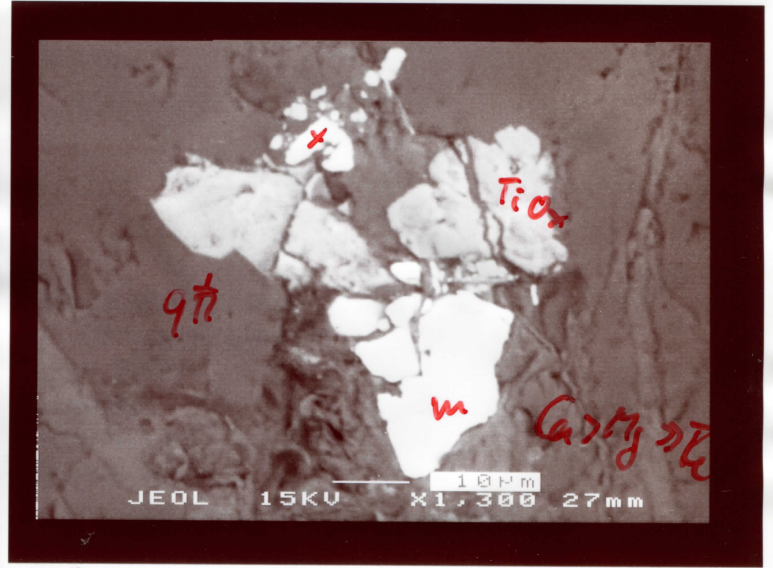
(B₁) monazite

I 2-3,



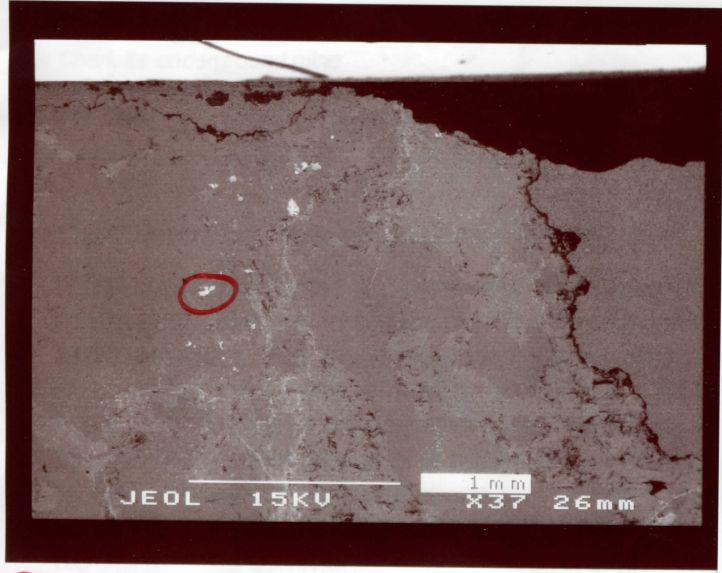
(C) m + x

I 2-3,



(C₁) monazite + xenotime

0312261 I 1 I 2-3,



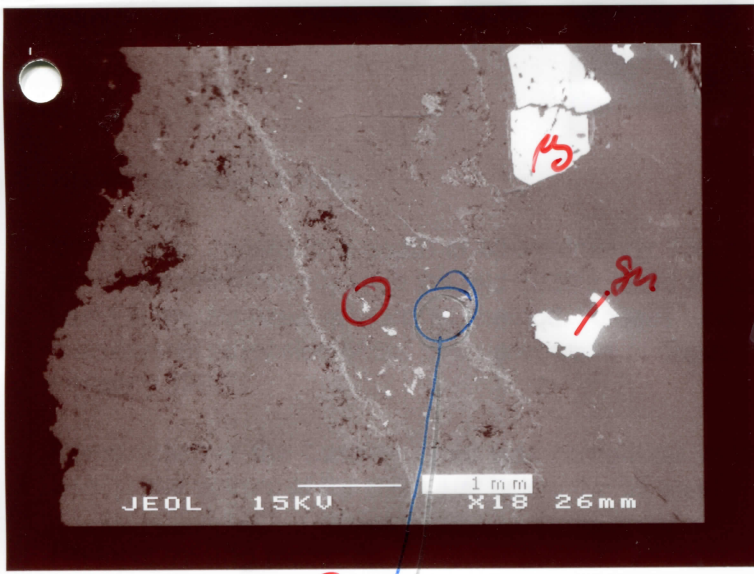
(A) xenotime

I 2-3₂



(A) xenotime

03-126 J1
 03-126 J1 I 2-3₂



(B) xenotime B₁

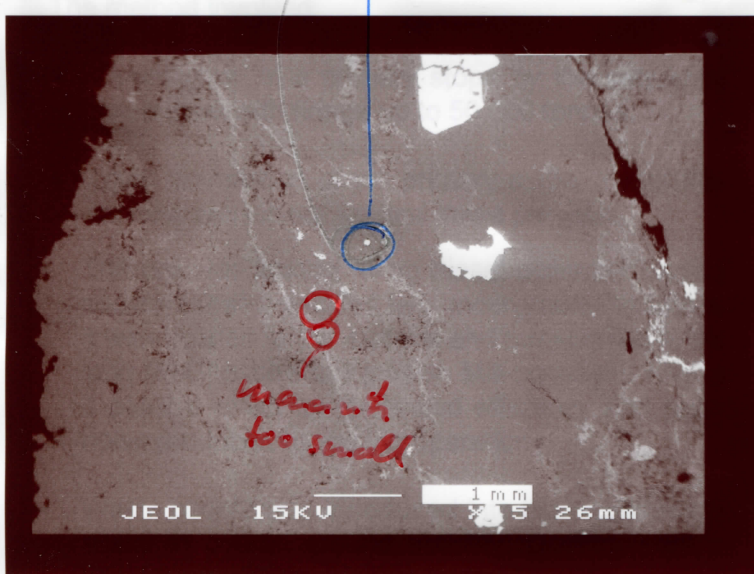
03-126 K3 I 2-3₂



es commenced in the Mt Charlotte area in 1893 and
 f Kalgoorlie commenced larger scale mining in 1962,
 the Reward and Man and Supply Shafts. With the
 Cassidy Shaft was sunk to a depth of 1200 metres in

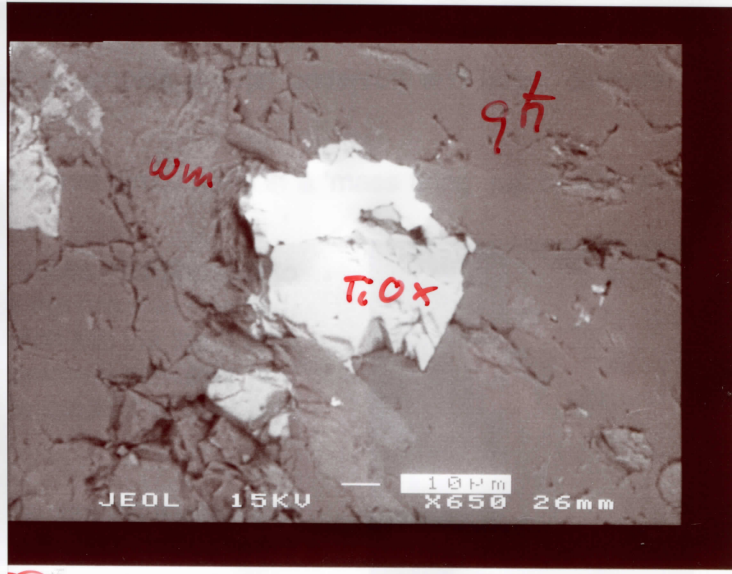
and a 6m x 5m decline provides access from the 9

long hole open stoping mining method was adopted
 duction of a relatively low-grade deposit.



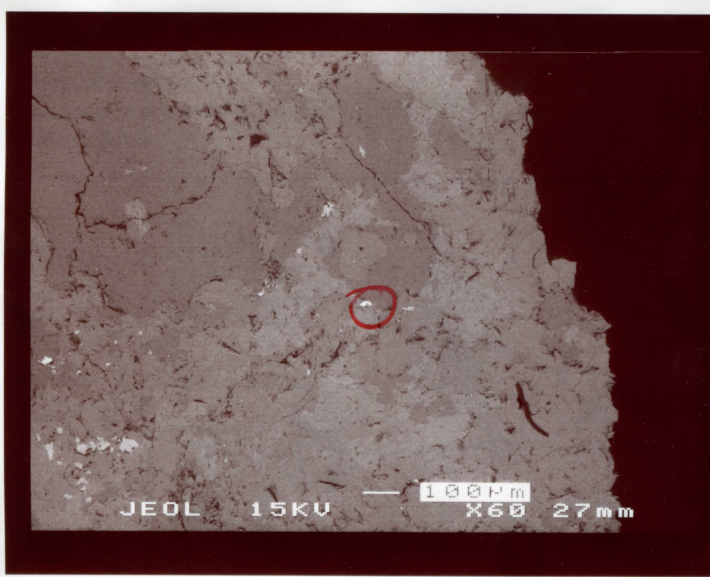
(C) xenotime

I 2-3₂



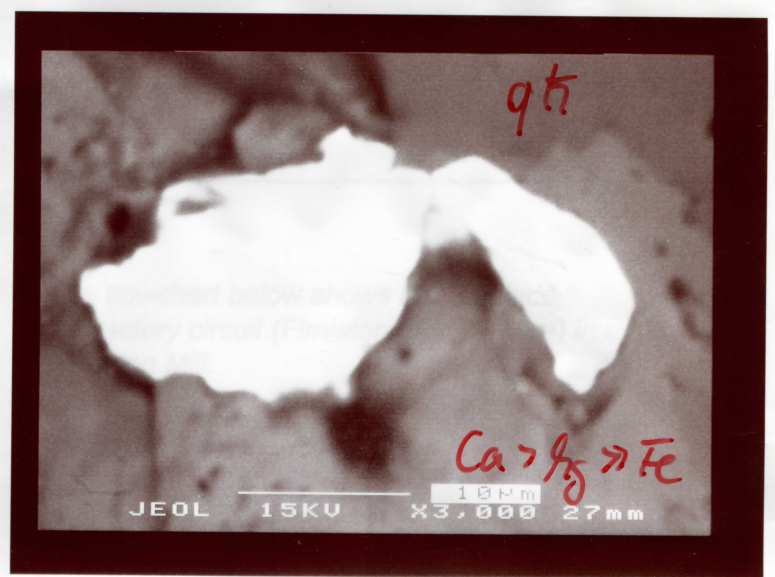
(C) xenotime

03-126 K2 I 2-3₂



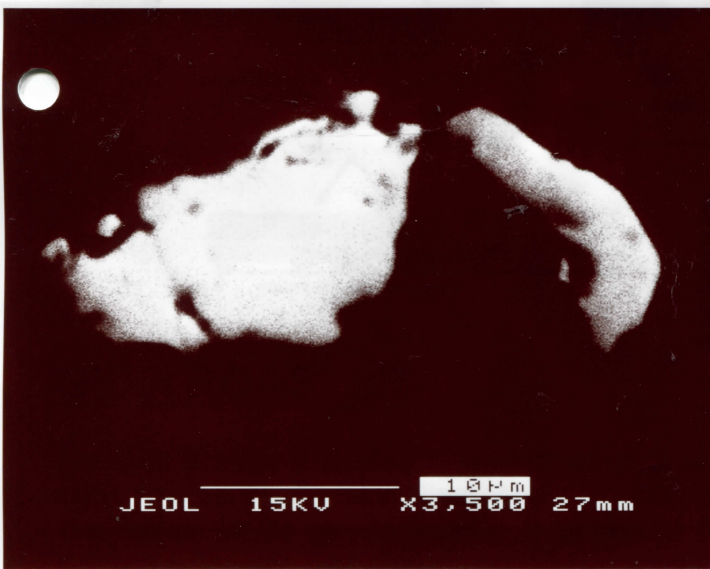
(C) monazite

93WC-1



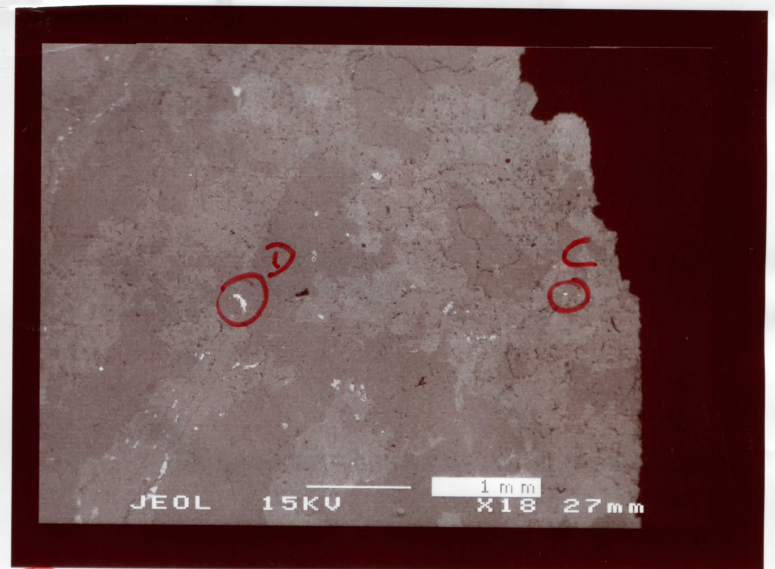
(C₁) monazite

93WC-1A



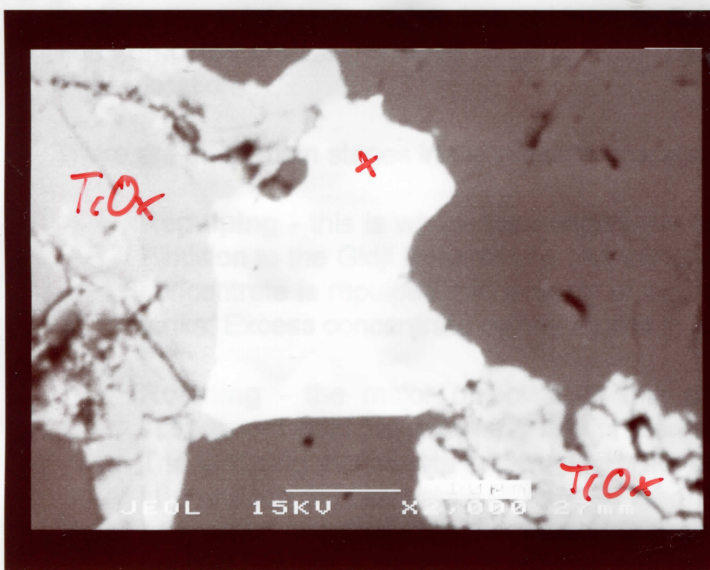
(C₂) monazite

93WC-



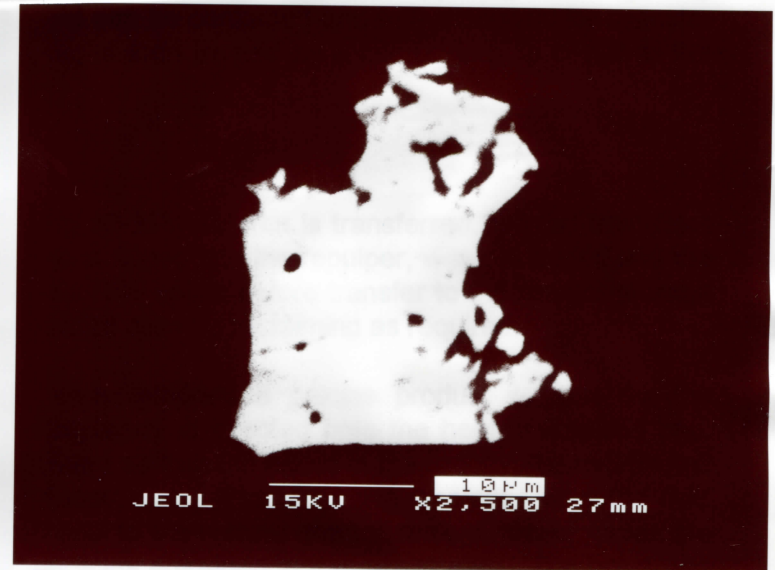
(D) xenotime

93WC-1A



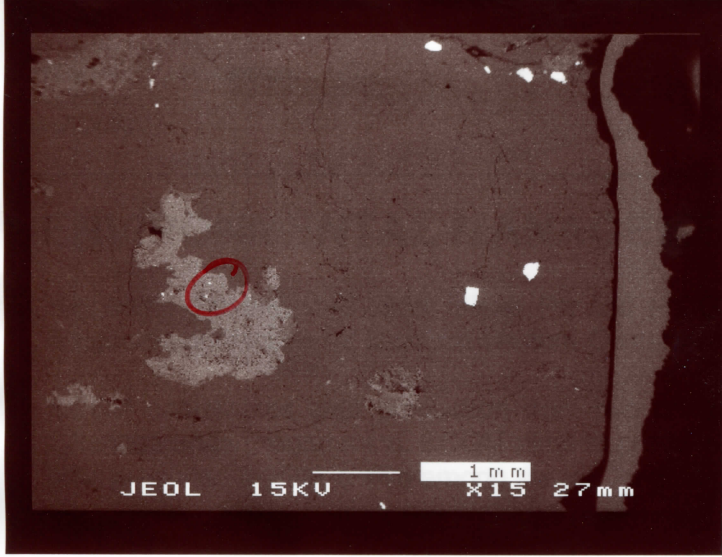
(D₁) xenotime

03-126 LI
93WC-1



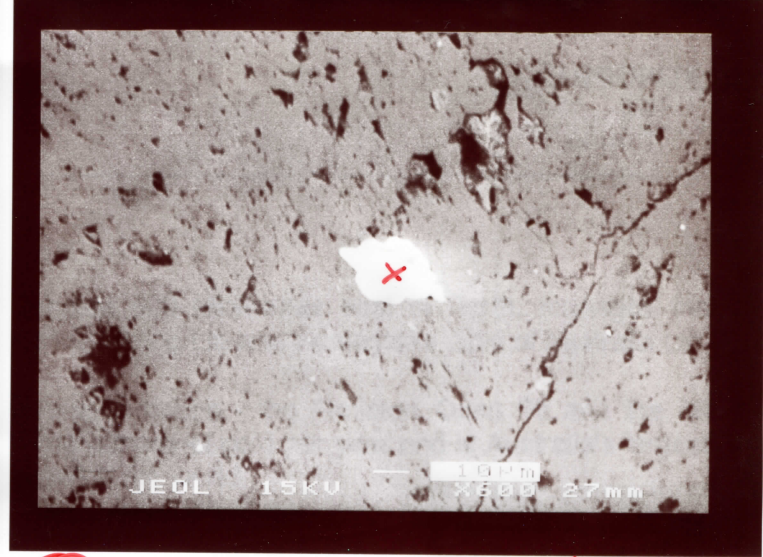
(D₂) xenotime

03-126 LI
93WC-1A



© C1 xenotime

93WC-



©1 xenotime in calcite

03-126 NI

93WC-13

active mining areas closer to the city have been fenced off. The air is cleaner and the mine and process plants are quieter.

In a h
proble
KCGM
It is ar
practic
From
early
reaso
The m
suite
would
Kalgo
Set in
Thous
vegeta
uel fo
conser



Pu (or Ag) in py

93WC-3

environmental
Golden Mile.
ist.
are current



1 mines have existed side-by-side. In the
l on horse-drawn vehicles. For practical
ominantly underground mines.

s introduced during the 1980s brought a
dust, safety and visual amenity. These
Mile is less than one kilometre from

Kalgoorlie-Boulder was a dusty place.
a with almost complete loss of natural
emendous demand for wood to provide
As a

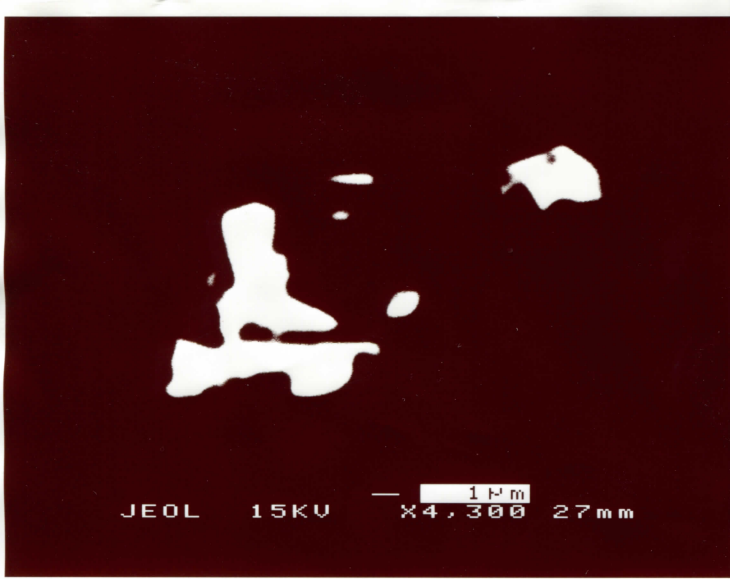
The vast majority of ore on the Golden
the sulphide (pyrite) and cannot be diss
'flotation' and then roasting to oxidise th
a by-product.



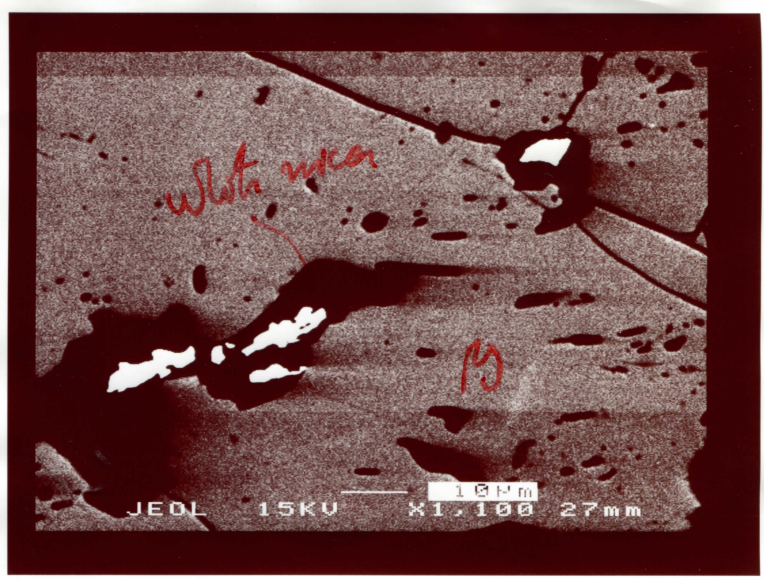
End 09/08/03

93WC-3

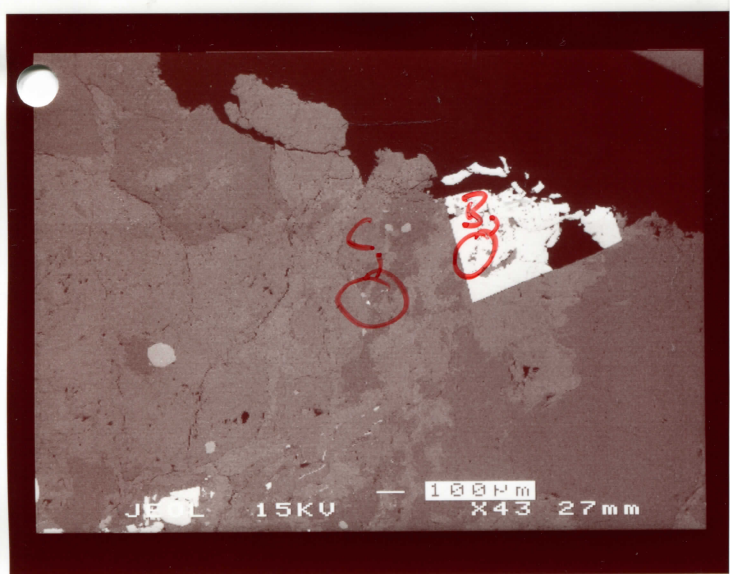
d inside
undergo
oxide as
to help
dioxide
om the
mining
soils
er can
ement
inding



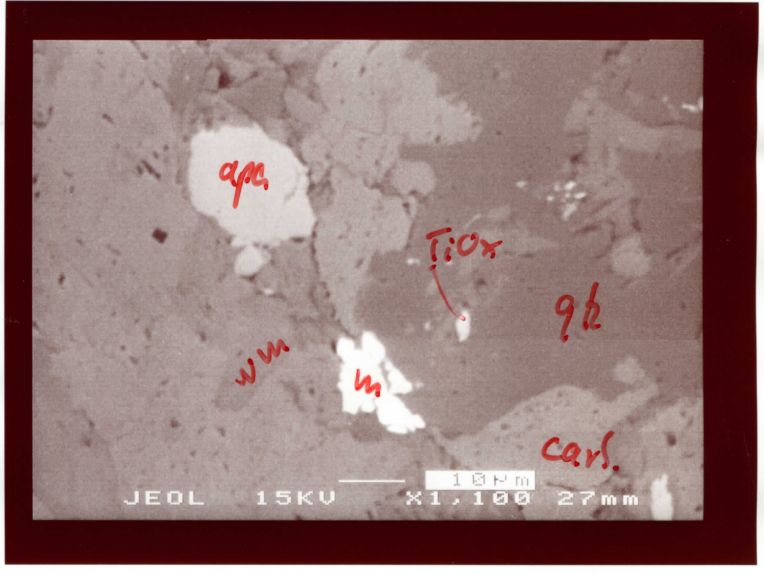
Xenotime in carbonate Ca, Mg, Fe
 93WC-5



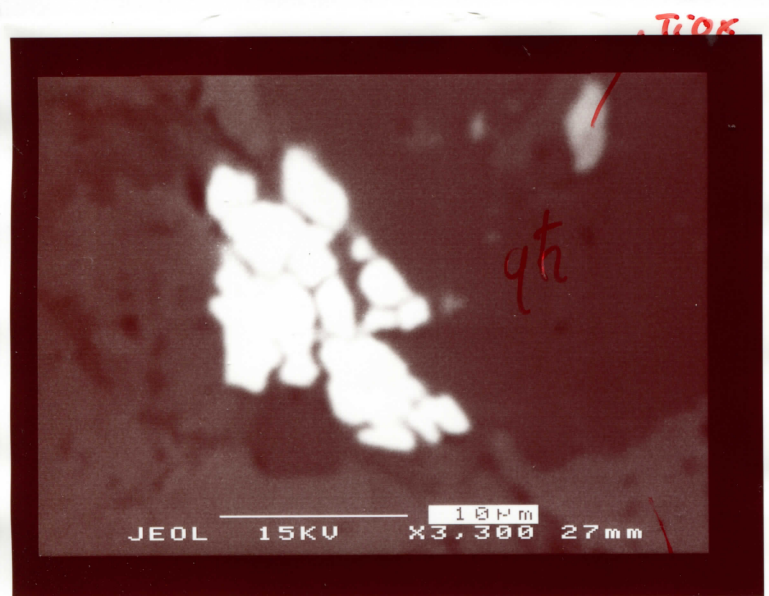
3 monazite in Mg + carb
 93WC-5



monazite
 93WC-5

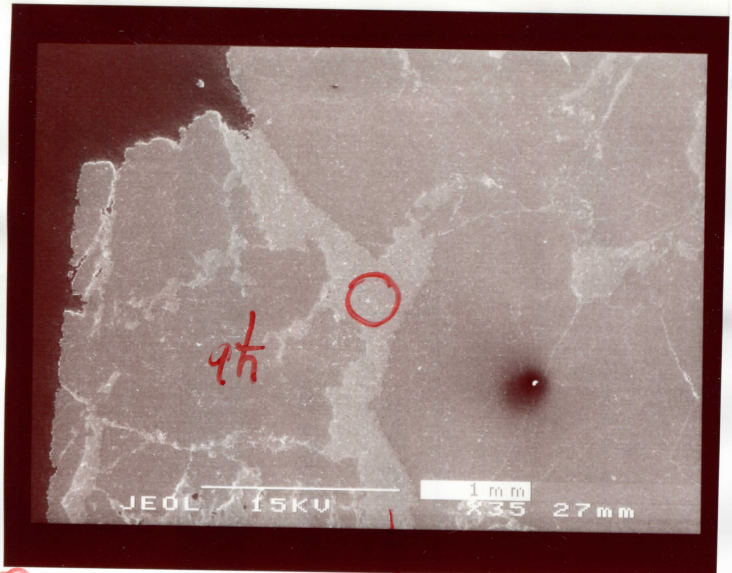


93WC-5



3 monazite
 03-1286 AI
 Ca, Mg, Fe

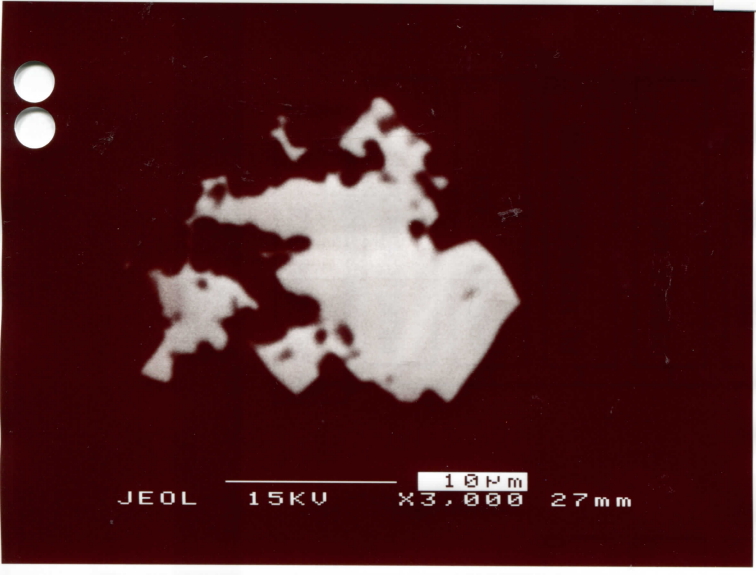
WCIN



(D) xeno
 Ca > H > E



(D) 1
 93WC-5



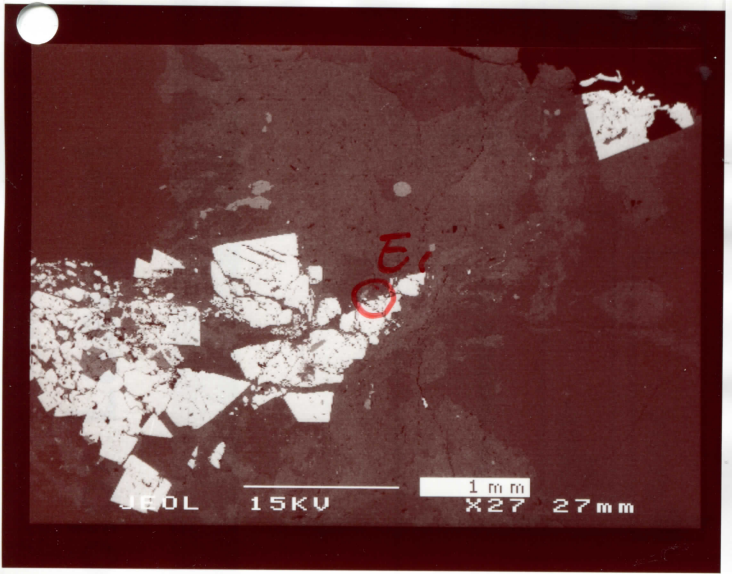
D1 xeno
 03-126 WRM
 03-126 ML 93WC-5

1	PRINT TEST PAGE
2	SOURCE= TRAY 2
3	DUPLEX= OFF
4	COPIES= 1
6	SENSOR TEST
7	COMPONENT TEST= TRANSFER MOTORS

Menu continued (10)

1	ANSFER KIT=
2	SER KIT=

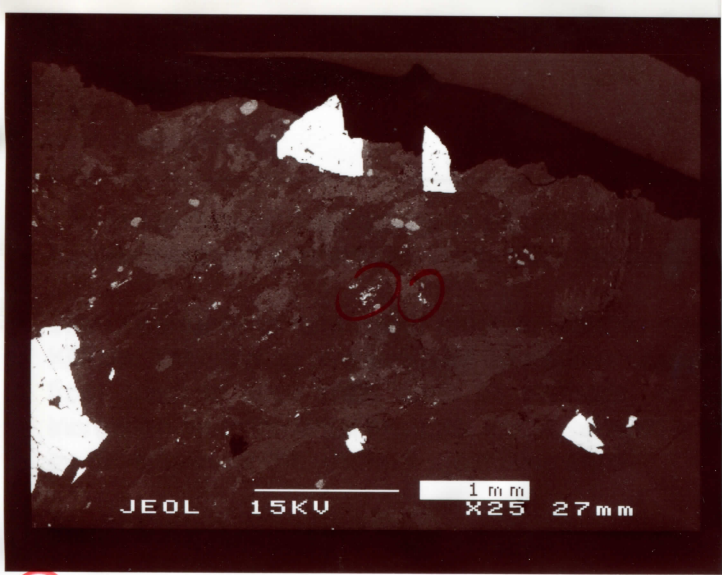
WCIN



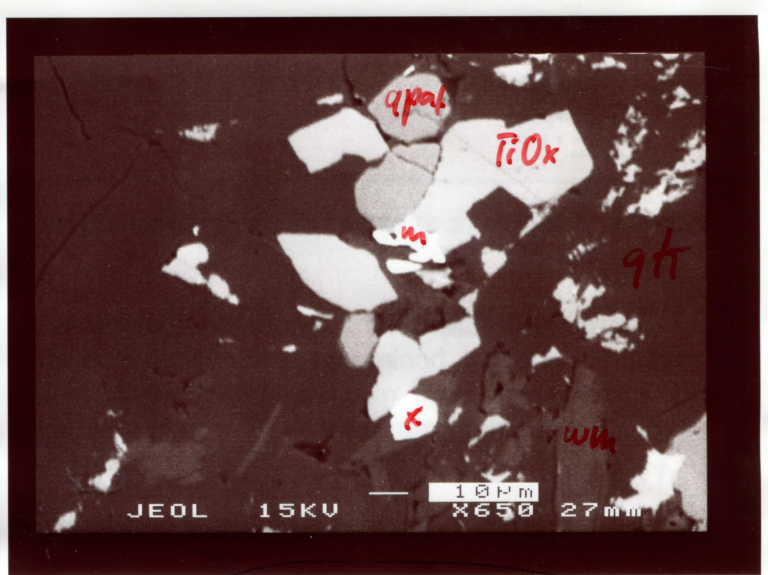
(E) 1



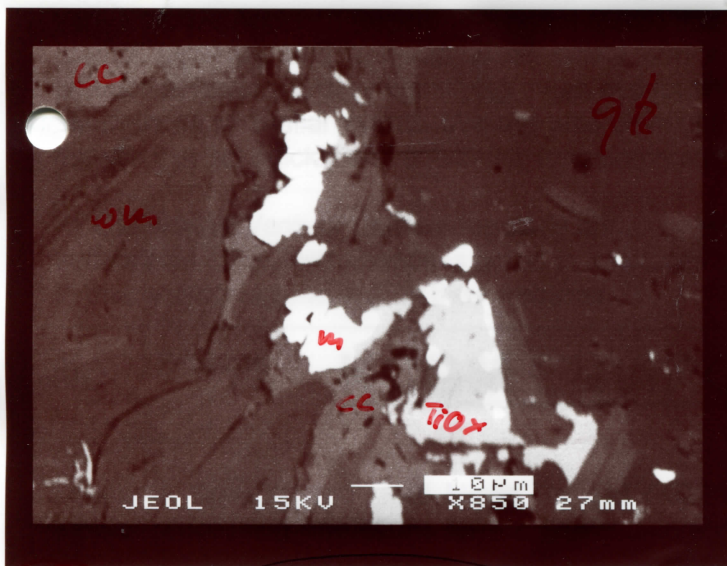
(E) 1
 03-126 A2 93WC-5



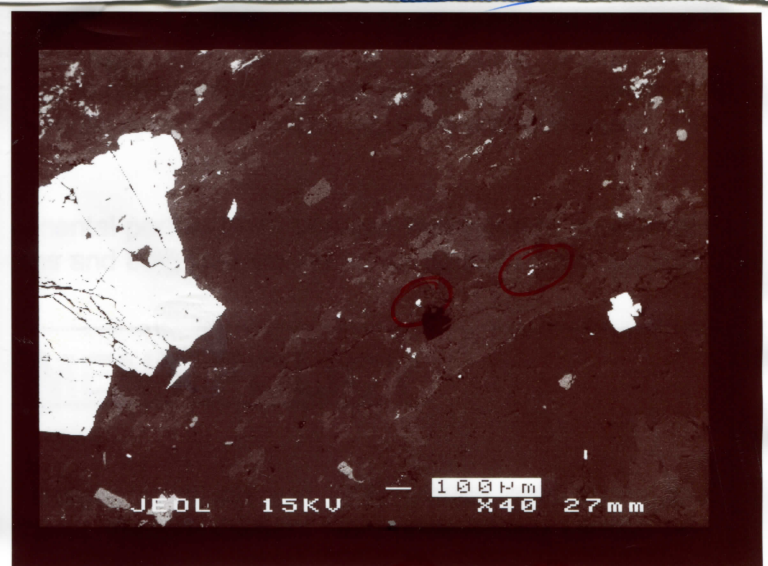
(A) θ_1 A_2
m + x 93WC-3



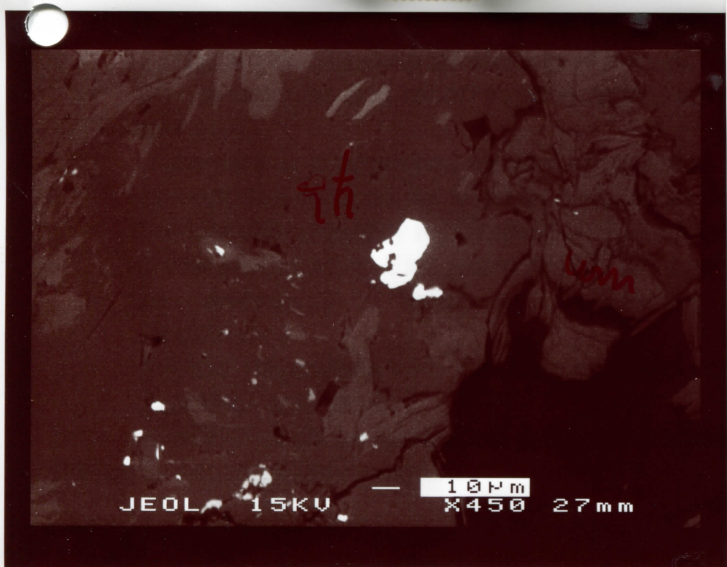
(A1) 03-126 B1 = mon
B2 = x 93WC-3



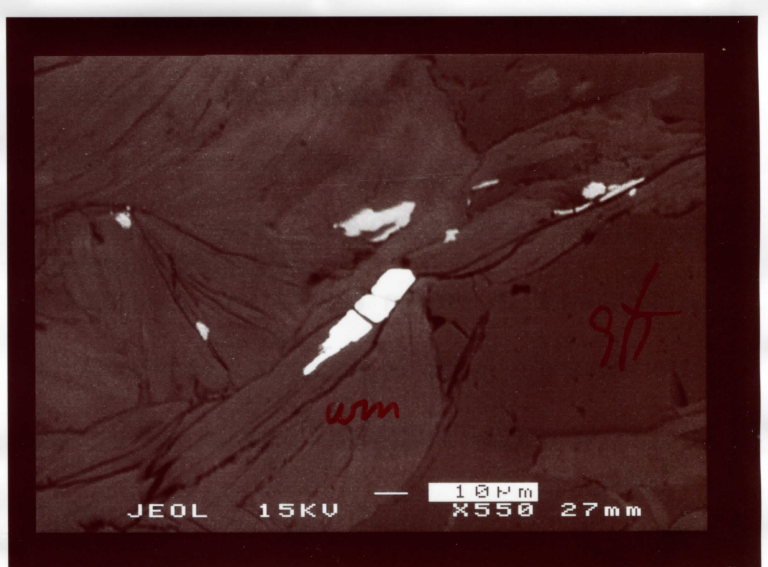
(A2) 03-126 B3 93WC-3



(B) mon-wk (B1) (B2) 93WC-3



(B1) mon-wk 03-126 B4 93WC-3



(B2) mon-wk 03-126 B5 93WC-3