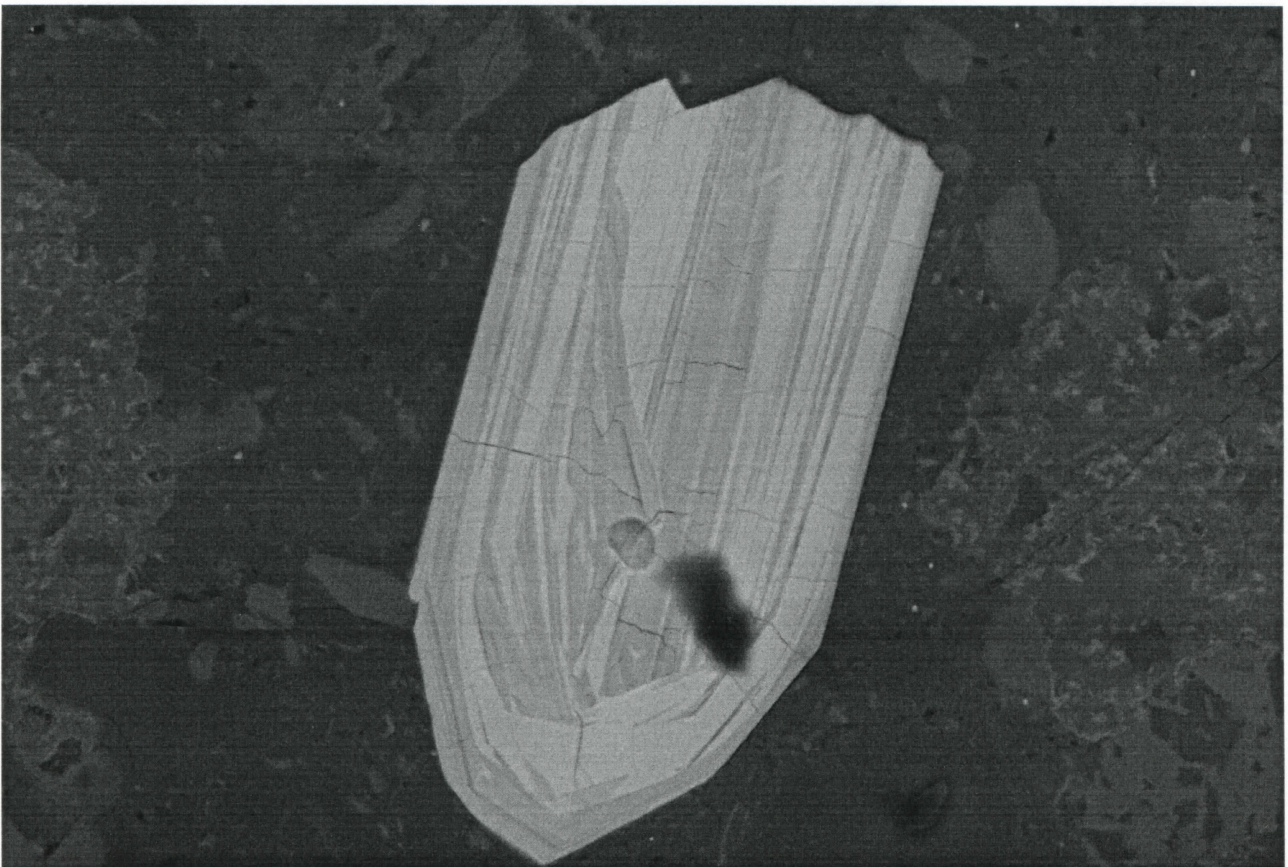


Serial No. = LEO 1550VP-33-03  
 SUPRA 55VP  
 100µm  
 Mag = 301 X  
 WD = 15 mm  
 Detector = QBSD  
 Noise Reduction = Frame Avg  
 Scan Speed = 10  
 EHT = 20.00 KV  
 Date: 23 Jun 2003 Time: 20:28:08  
 Filament Age = 2386.07 Hours  
 Gun Vacuum = 1.18e-008 Torr

G300B.JPG



Serial No. = LEO 1550VP-33-03  
 SUPRA 55VP  
 10µm  
 Mag = 2.43 K X  
 WD = 15 mm  
 Detector = QBSD  
 Noise Reduction = Frame Avg  
 Scan Speed = 10  
 EHT = 20.00 KV  
 Date: 23 Jun 2003 Time: 20:28:08  
 Filament Age = 2386.05 Hours  
 Gun Vacuum = 1.17e-008 Torr

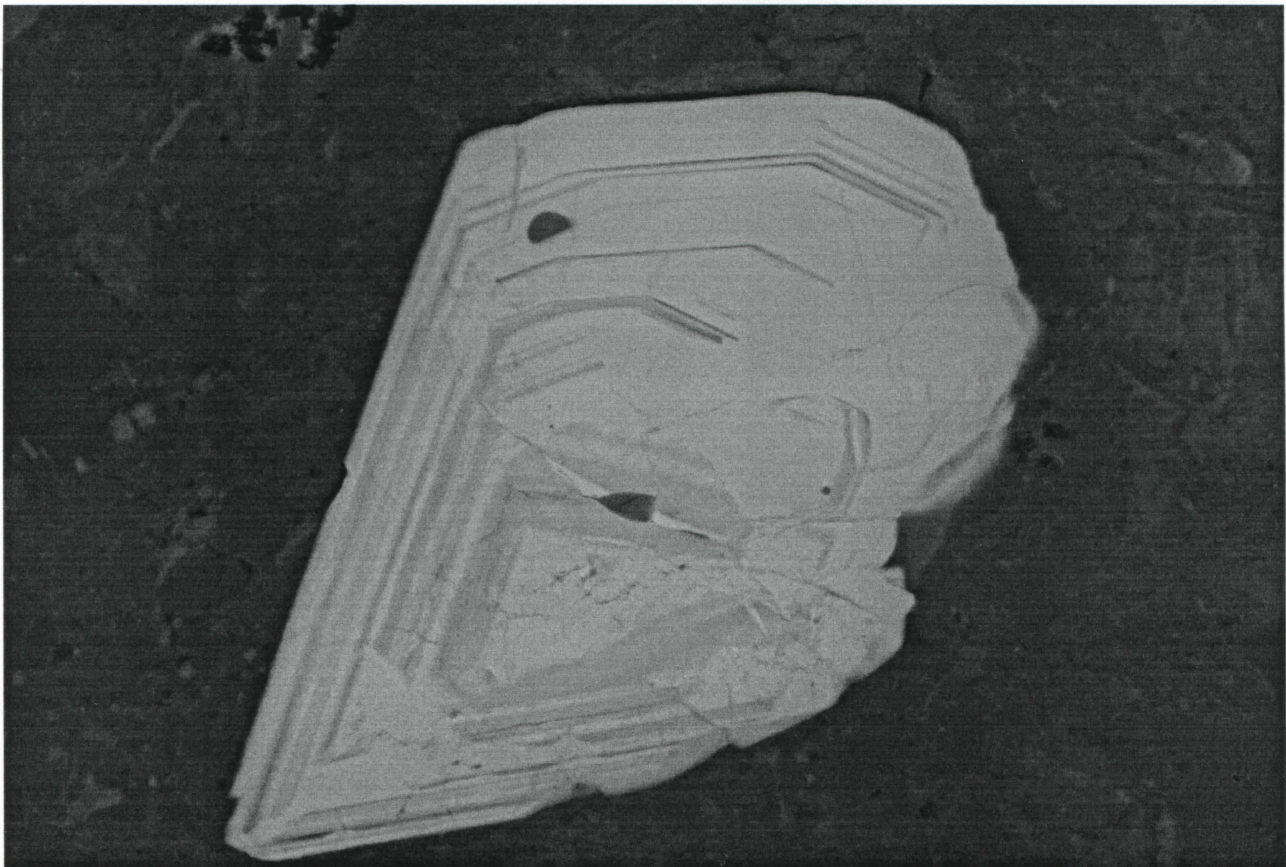
GMAXB.JPG





Serial No. = LEO 1520VP-53-05  
 SUPRA 55VP  
 100µm  
 Mag = 300 X  
 WD = 15 mm  
 Detector = CBSD  
 Noise Reduction = Flame Avg Scan Speed = 10  
 EHT = 20.00 KV  
 Date: 23 Jun 2003 Time: 20:24:43  
 Filament Age = 2386 14 Hours  
 Gun Vacuum = 1.18e-008 Torr

H300B.JPG



Serial No. = LEO 1520VP-53-05  
 SUPRA 55VP  
 3µm  
 Mag = 3.28 K X  
 WD = 15 mm  
 Detector = CBSD  
 Noise Reduction = Flame Avg Scan Speed = 10  
 EHT = 20.00 KV  
 Date: 23 Jun 2003 Time: 20:23:28  
 Filament Age = 2386 14 Hours  
 Gun Vacuum = 1.18e-008 Torr

HMAXB.JPG