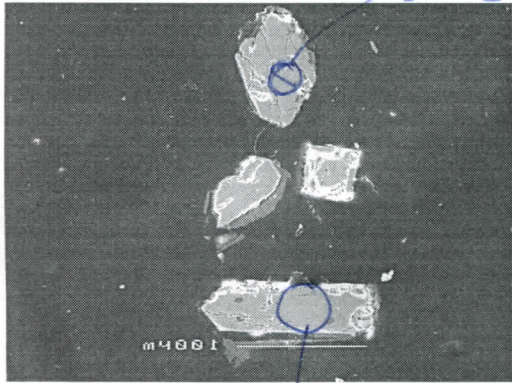
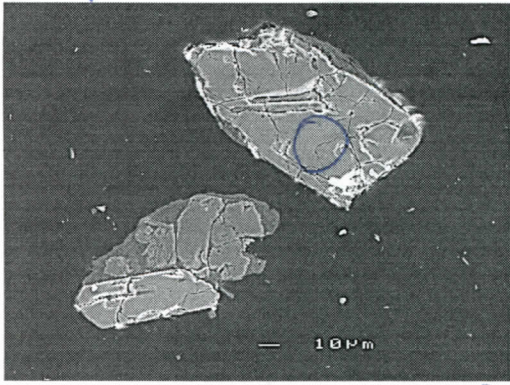


OC- younger group

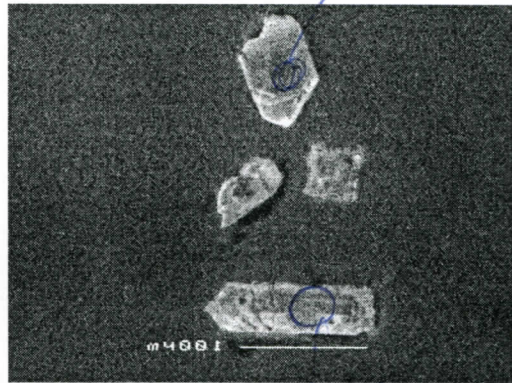
AOC-J1



young

AOCF1-1
AOCF2-1

OC- older group

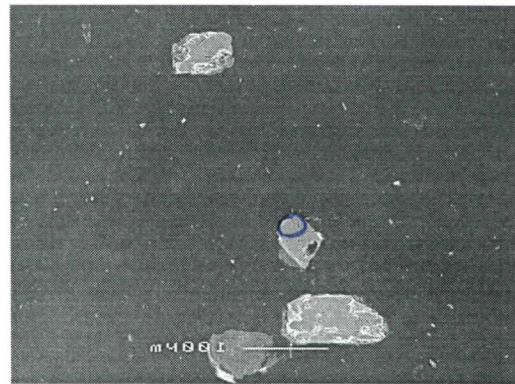
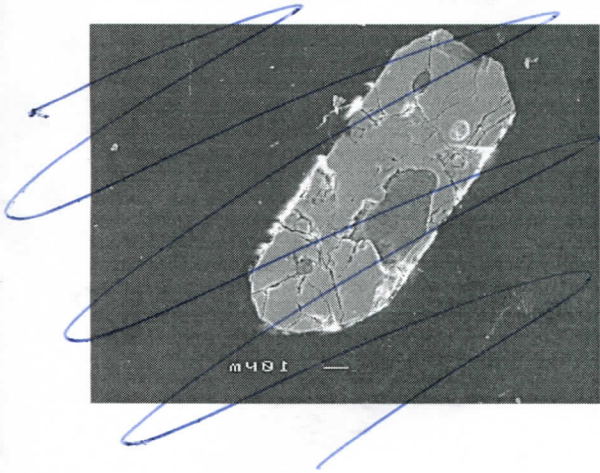
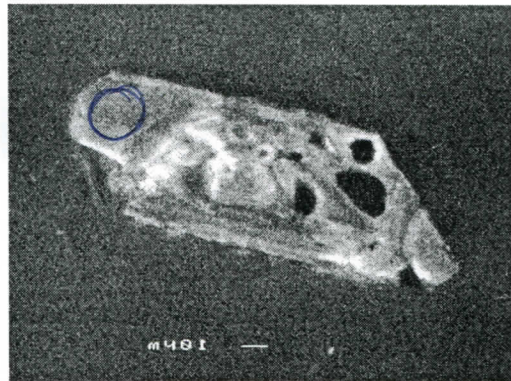
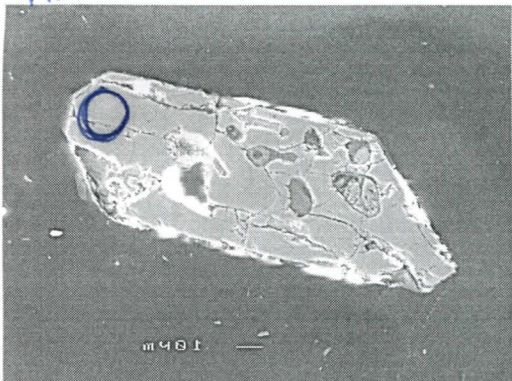


young

old

old

AOC-B1

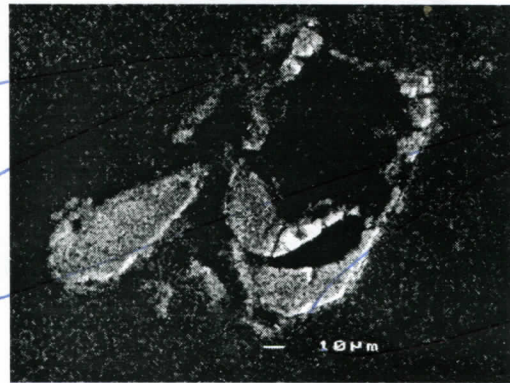
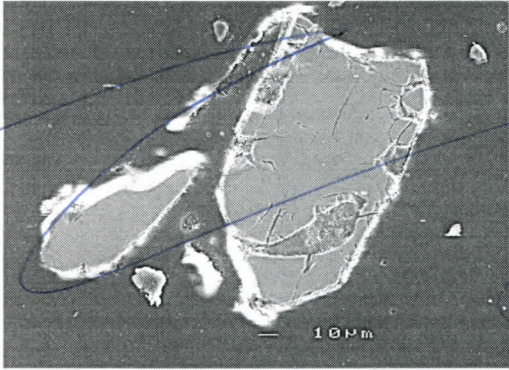
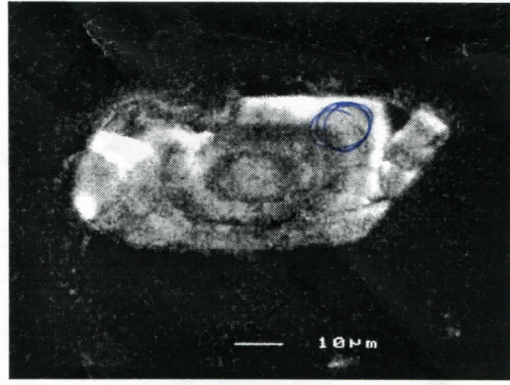
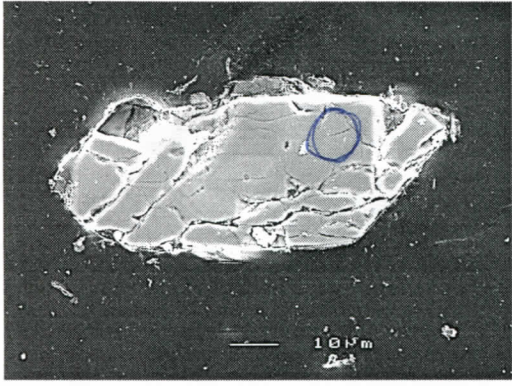


AOCN1

should have AOC-G1
AOC-Q1 here too -rims?

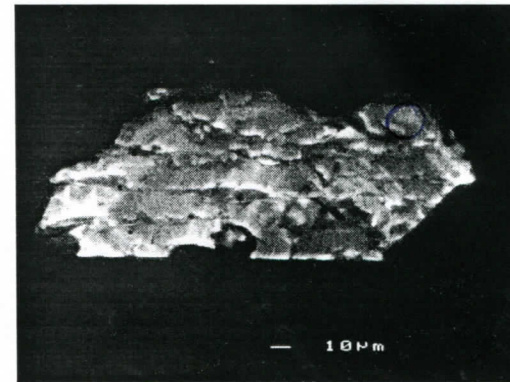
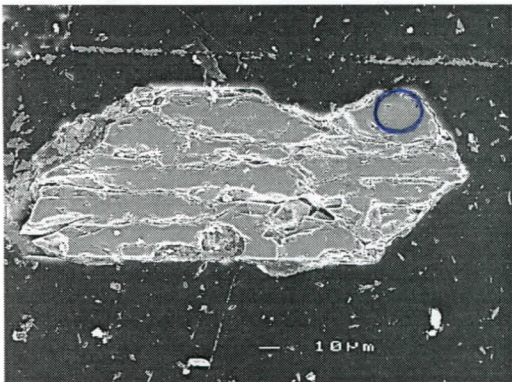
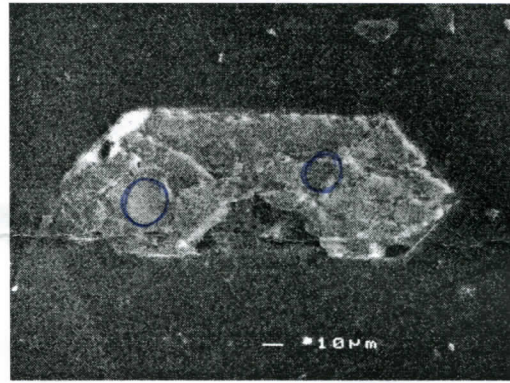
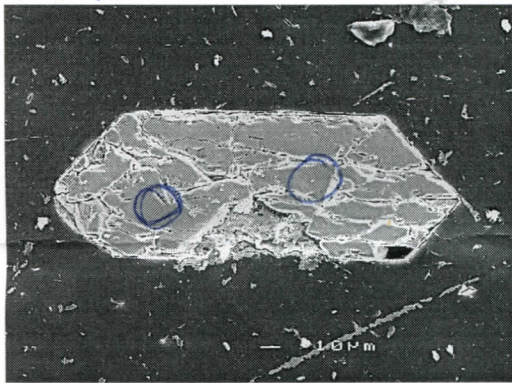
UDV 3-X-1

688.24

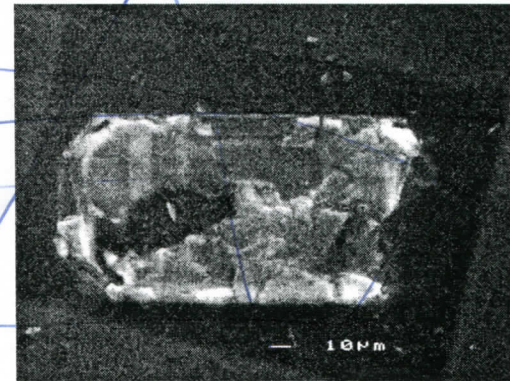
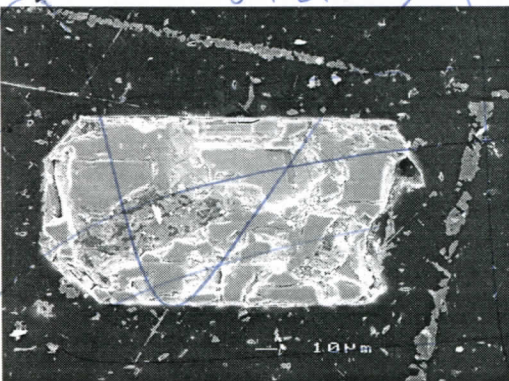


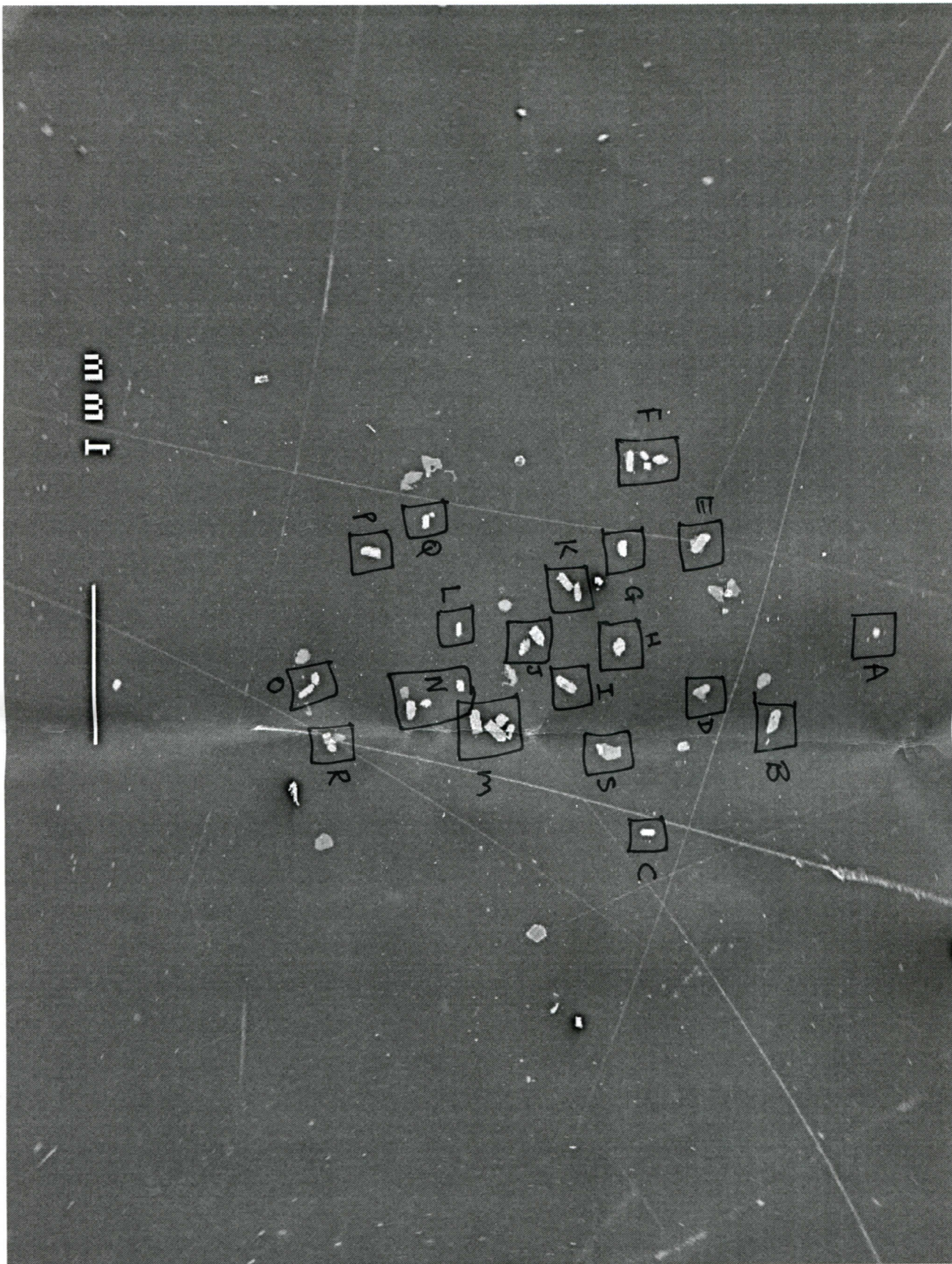
UDV. a1 and a2

OC- younger group



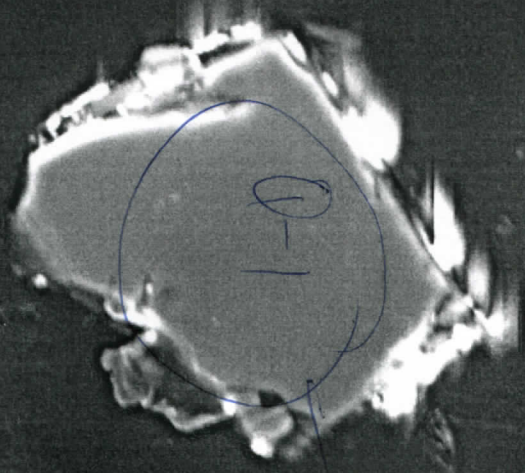
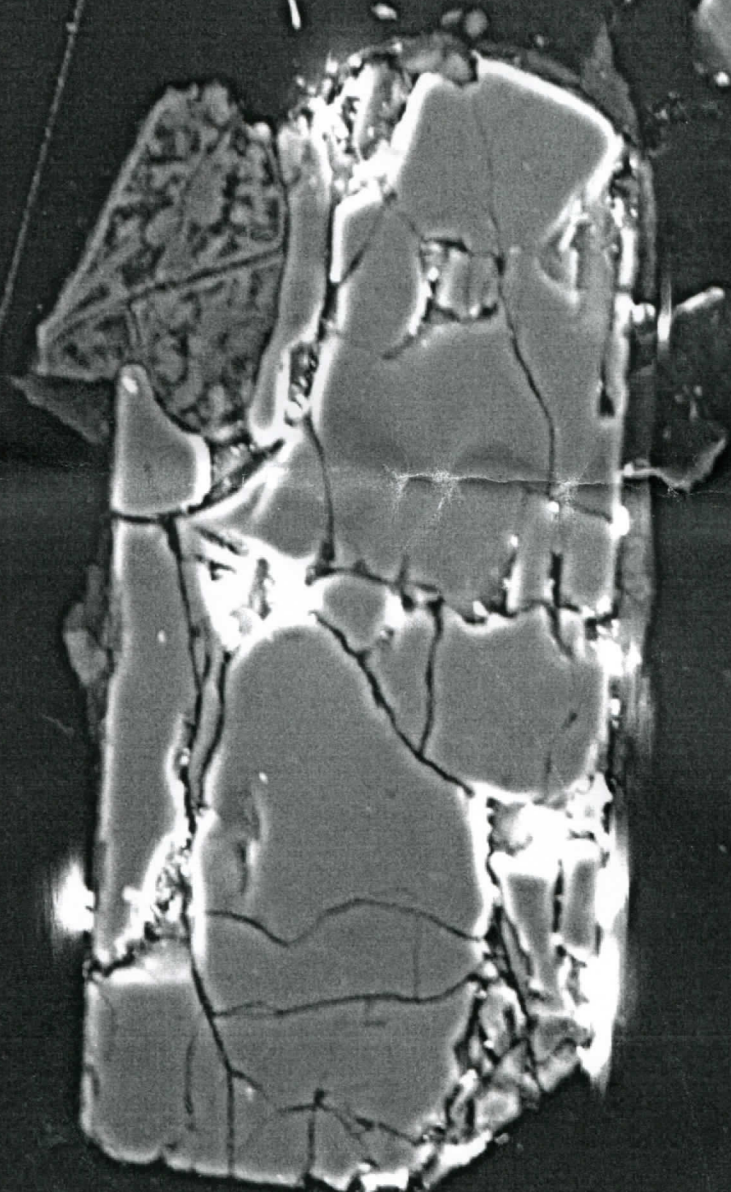
UDV. b1





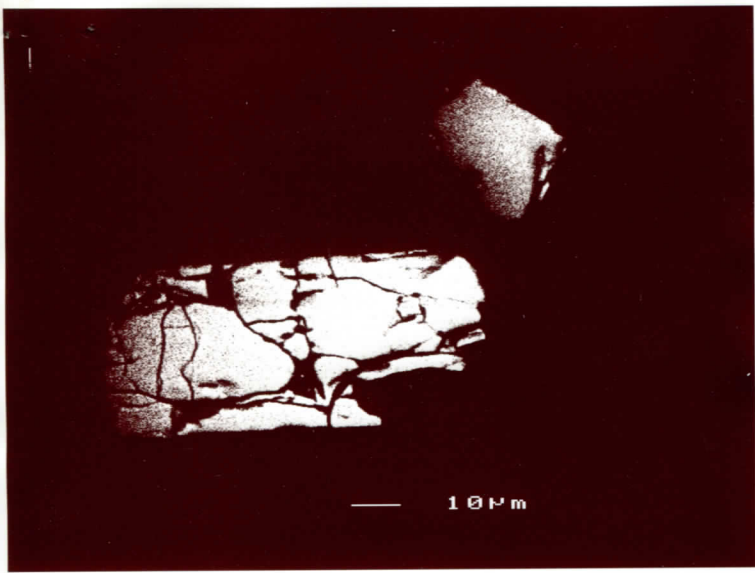
A_OC

10401



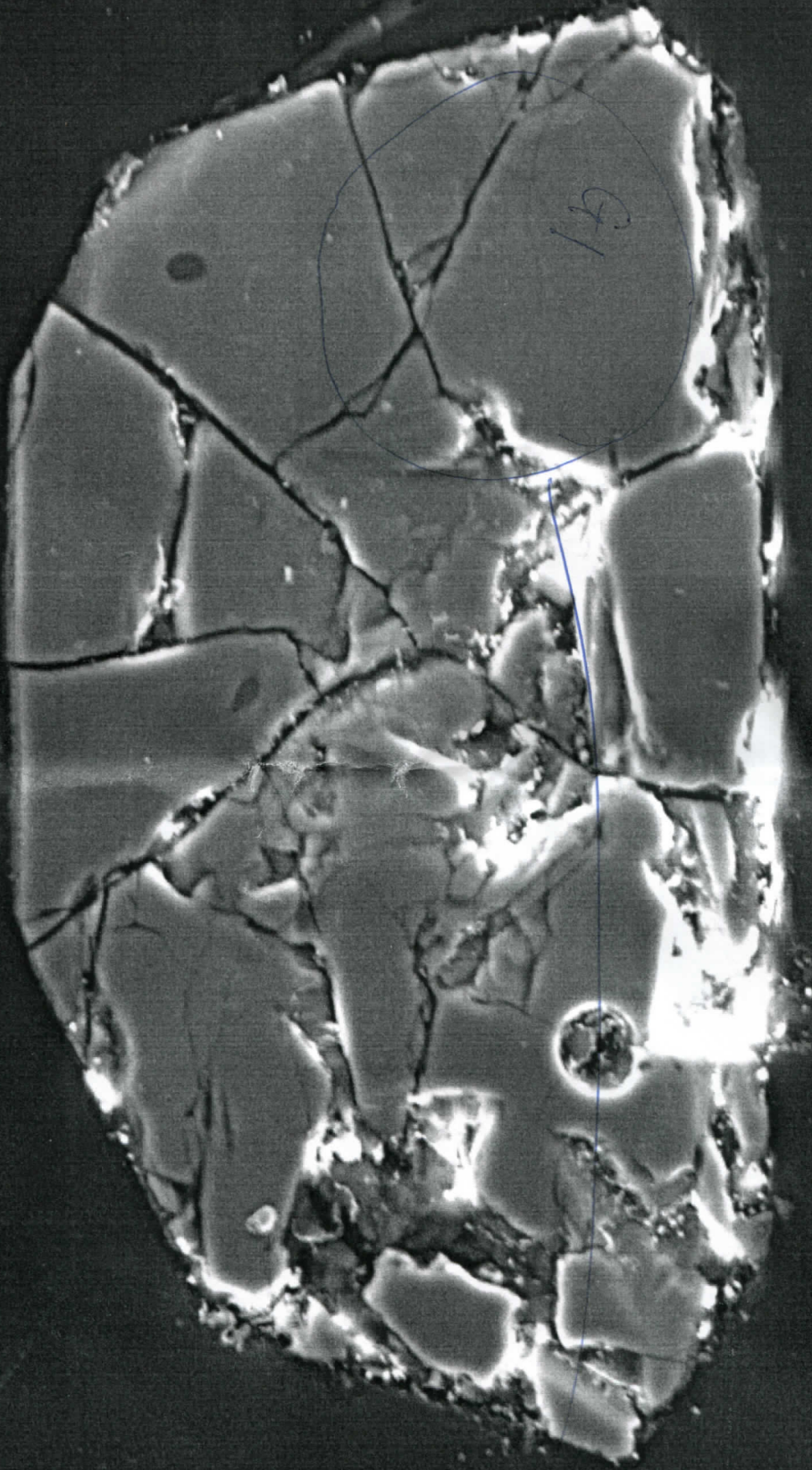
A_OC_Q

1991±3



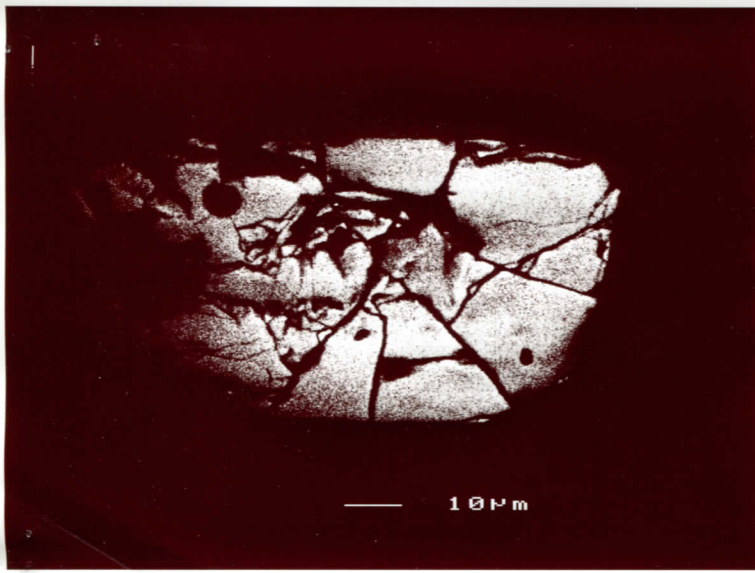
OC Q

10401

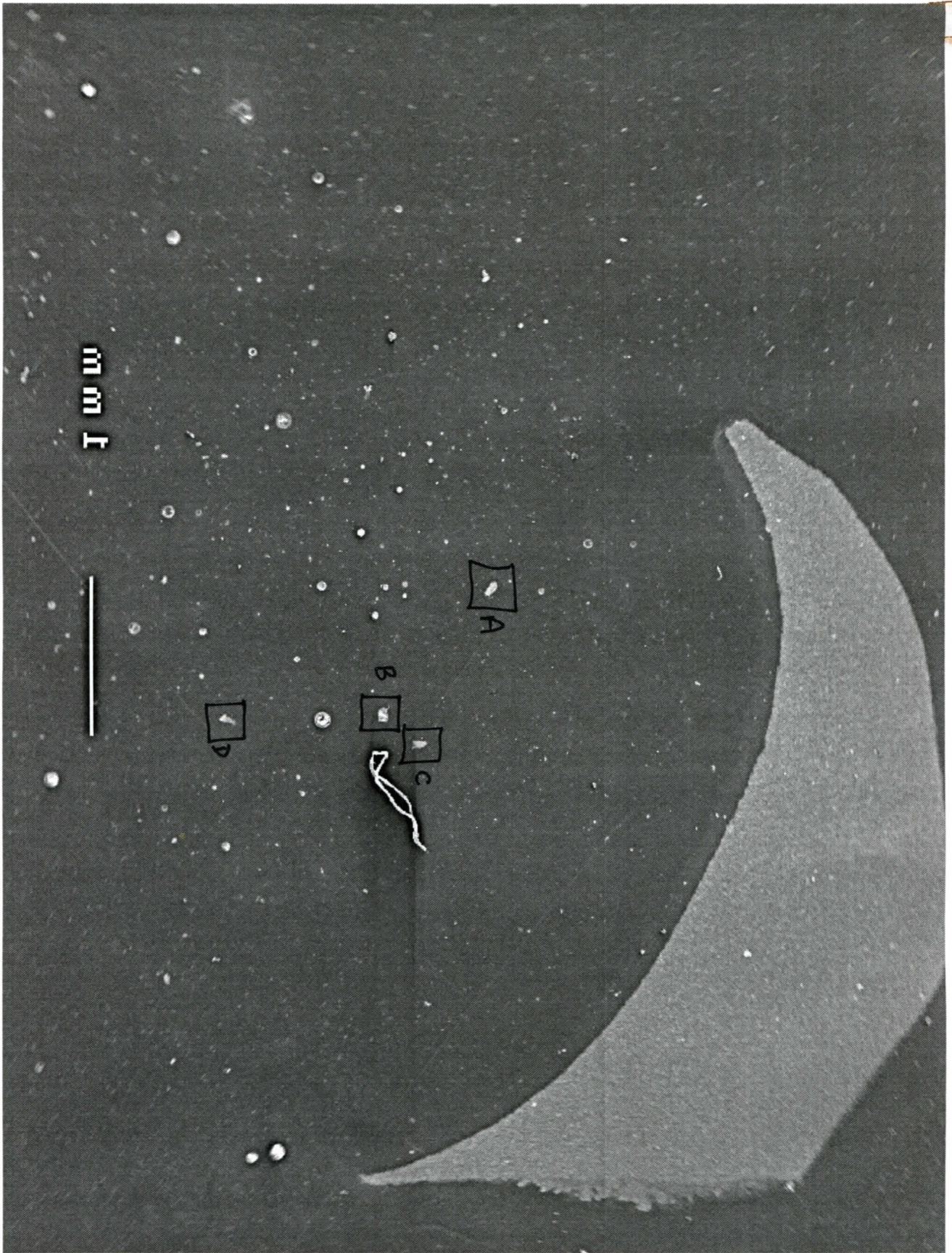


A_OC_G

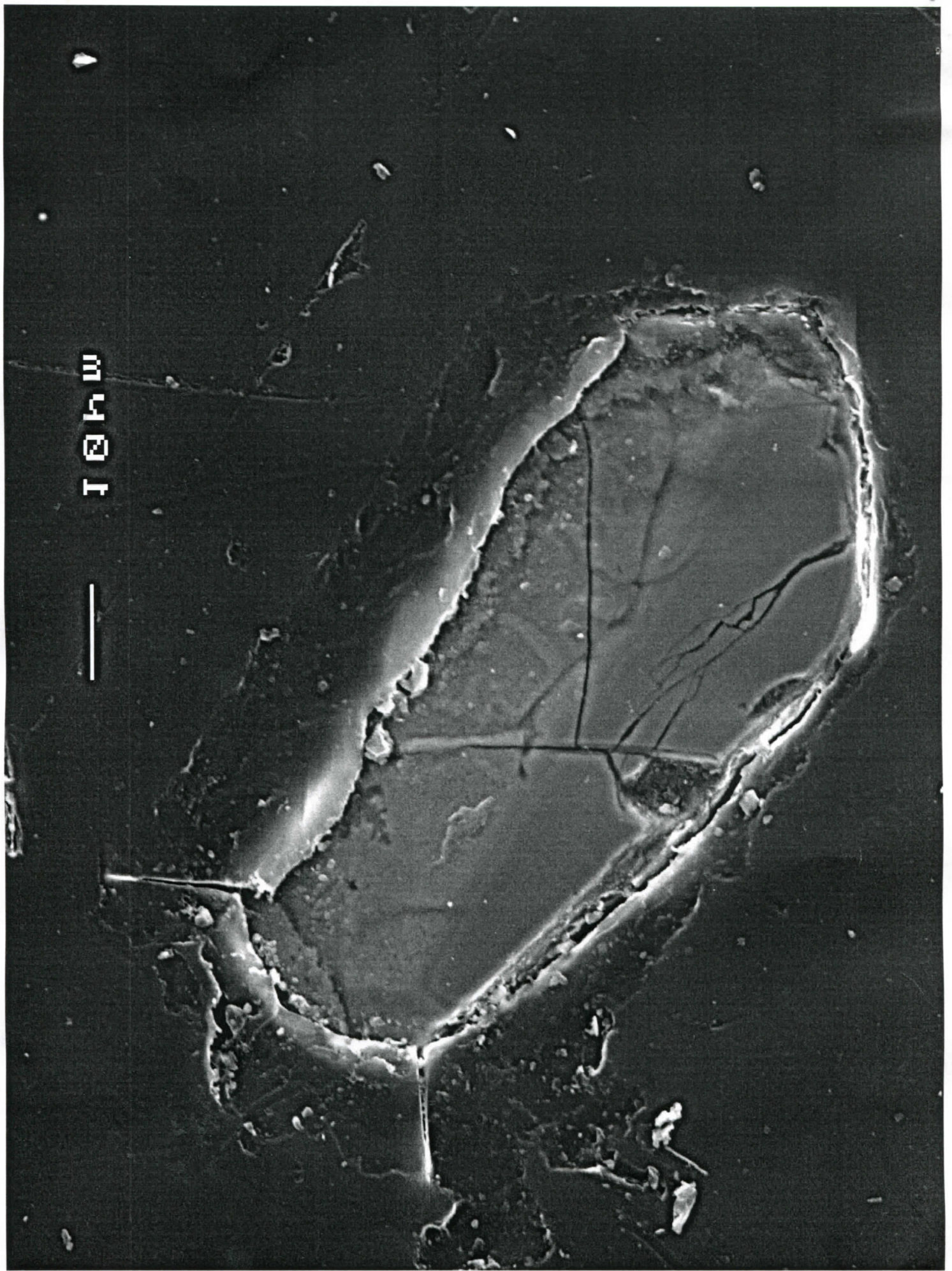
1909±68



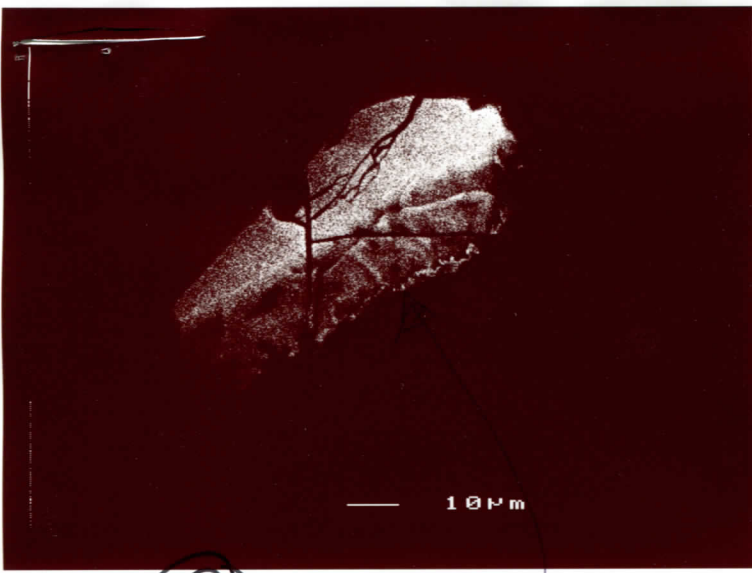
ocg



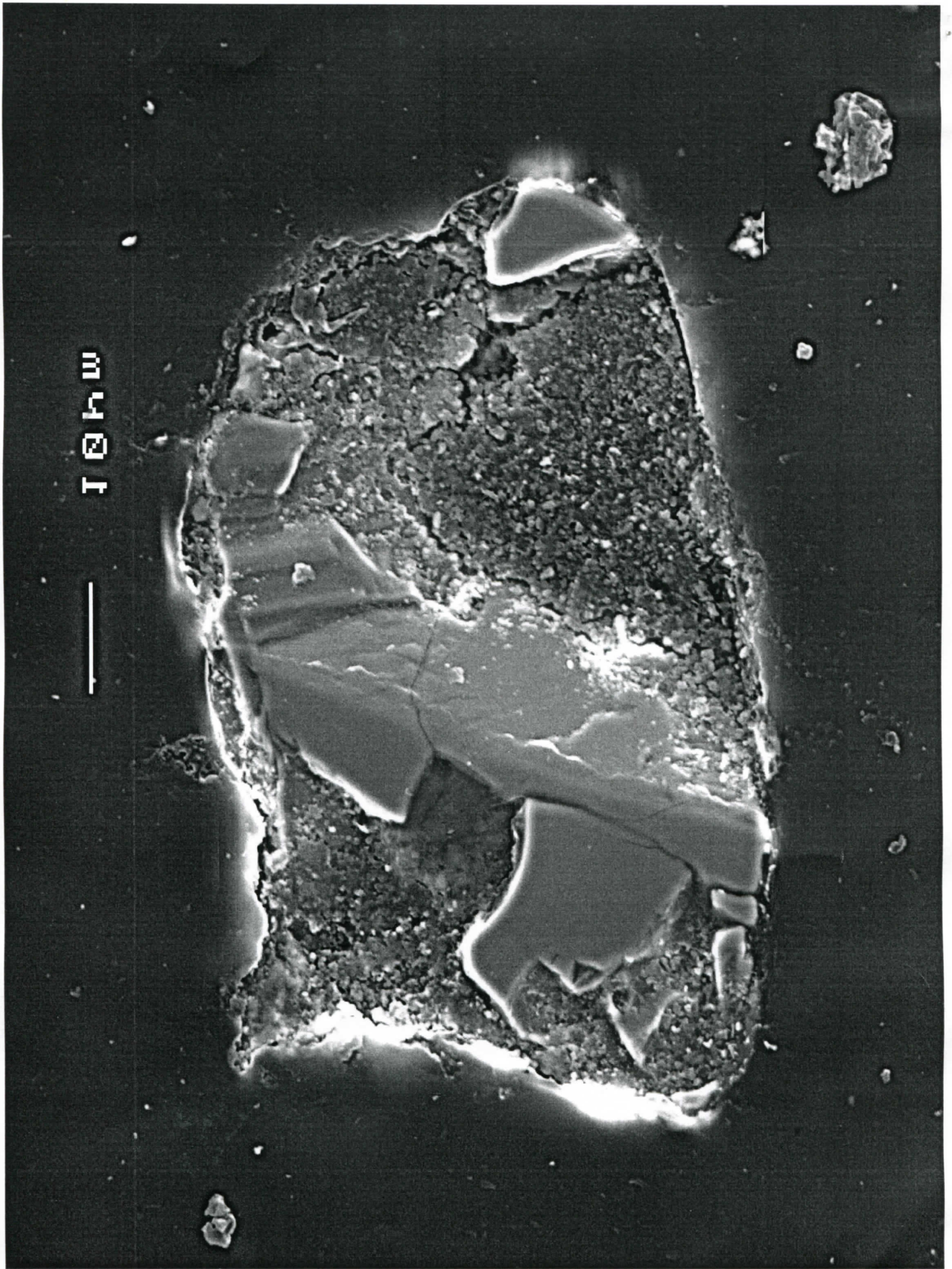
B_688.24



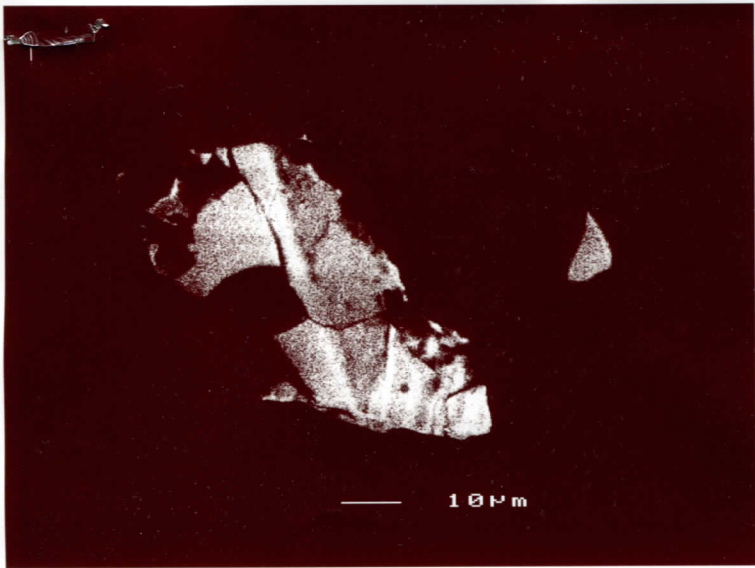
B_688.24_A



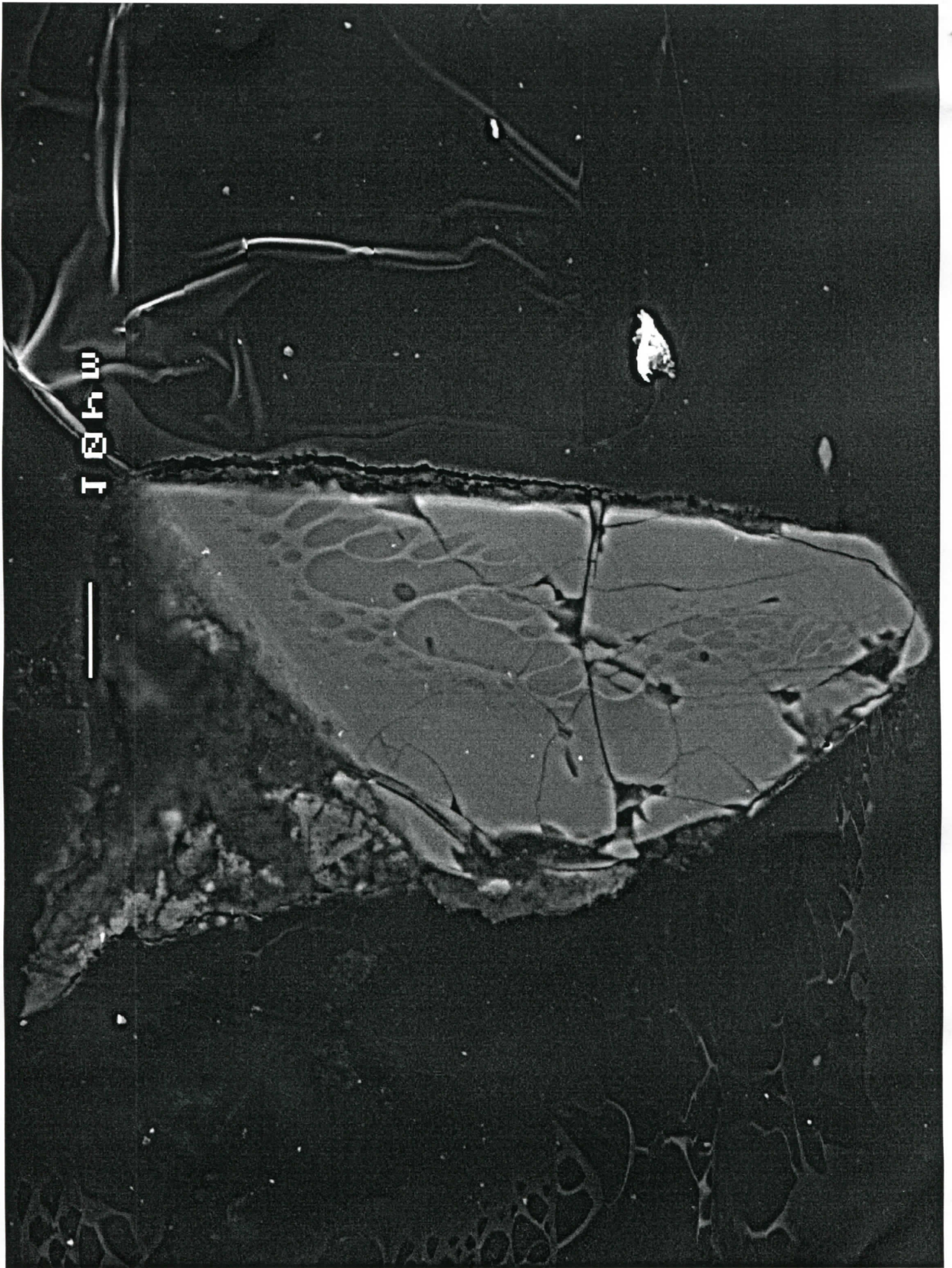
sta (B) body 688 a slope 2.
688



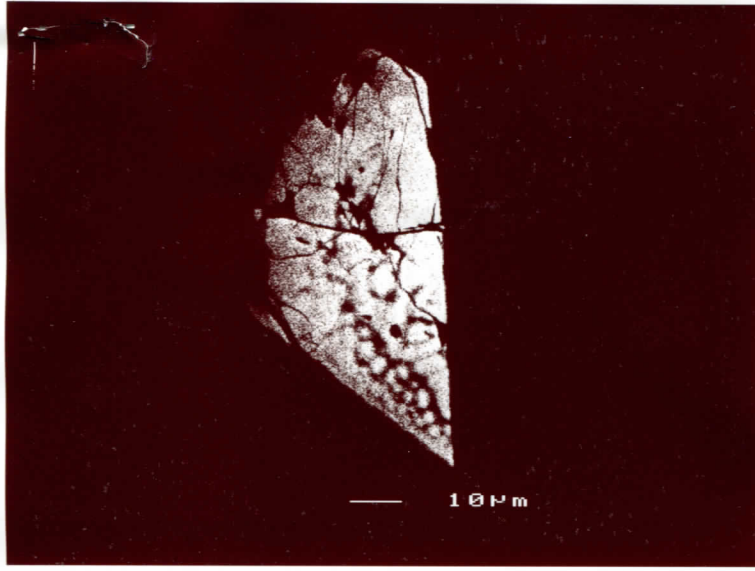
B_688.24_B



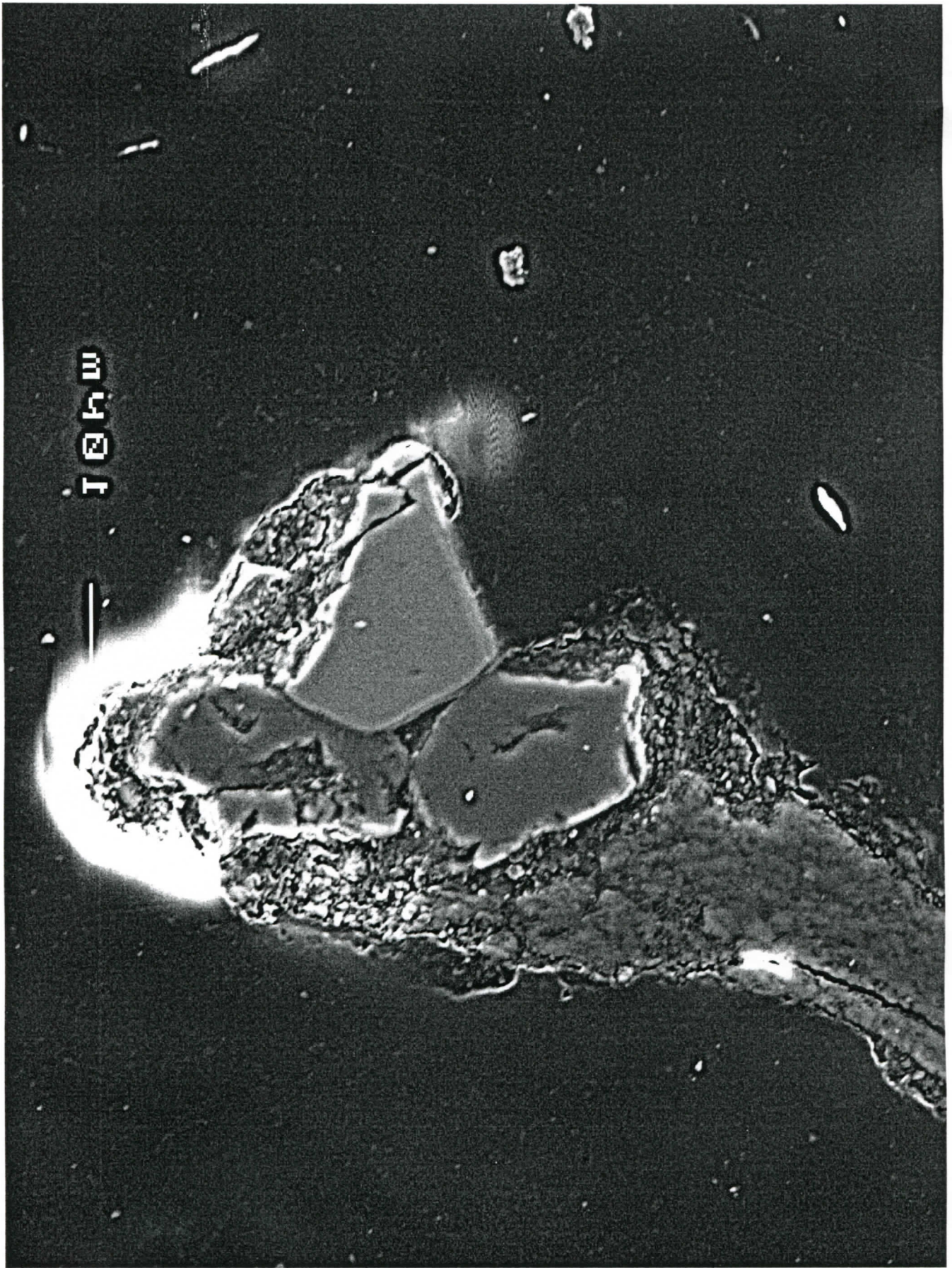
bdv 688 b



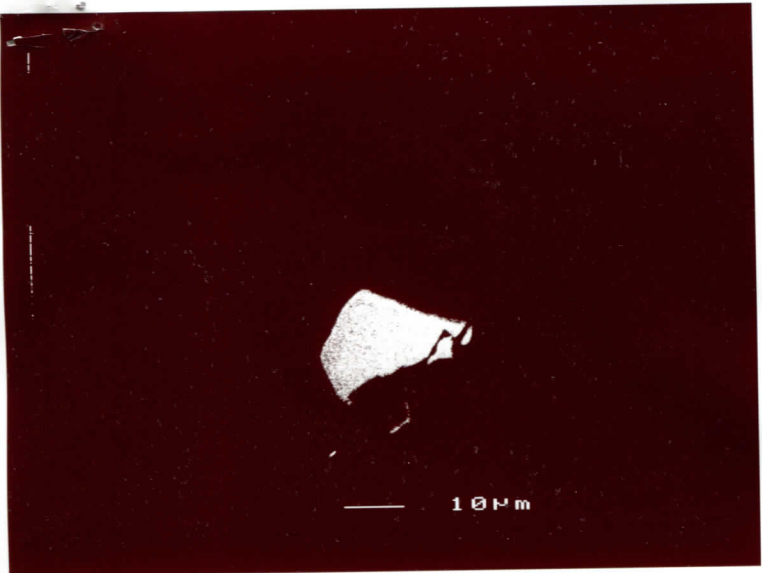
B_688.24_C



bdu 688c



B_688.24_D



bdv08d



B_688.24 - unknown zircon?

