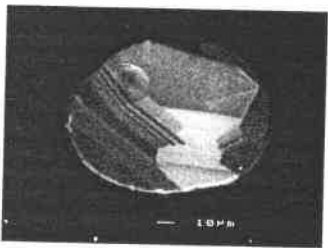
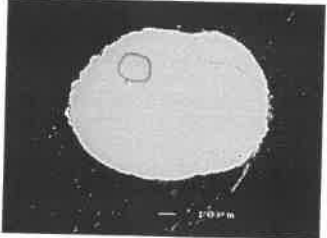
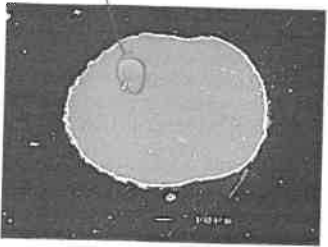


OS-5 D - 81x det.

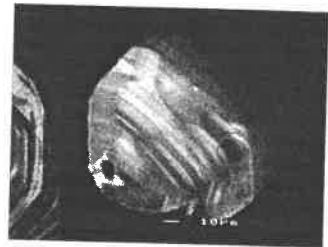
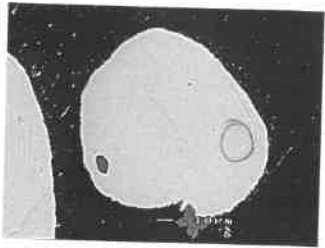
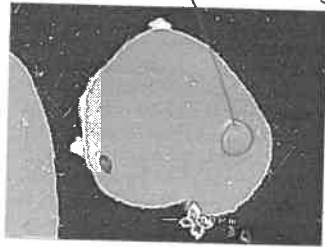
2815±12

2



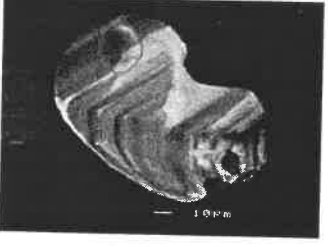
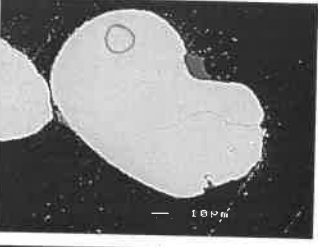
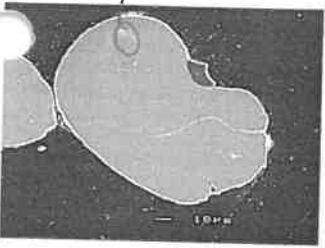
2702±12

3



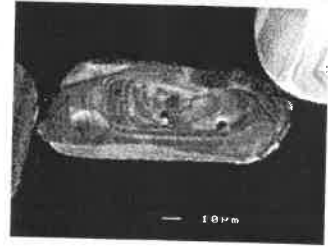
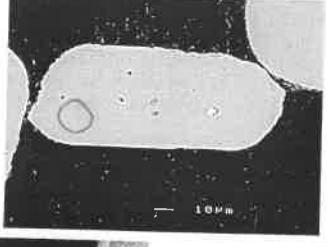
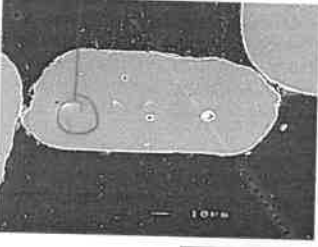
2705±13

5



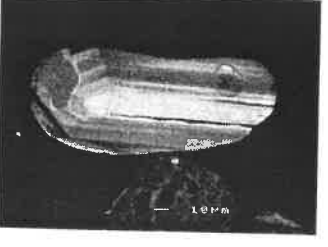
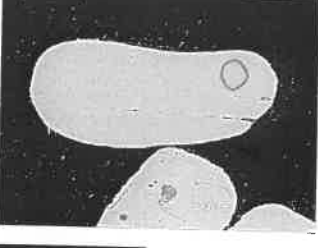
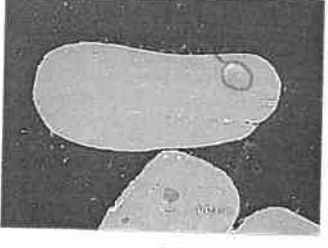
2509±8

6



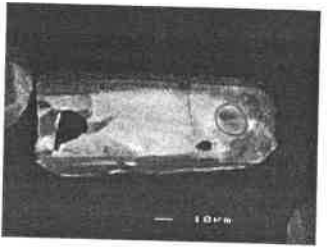
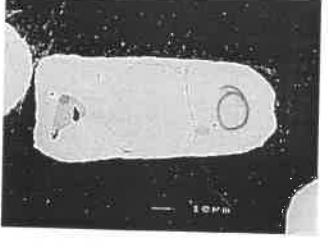
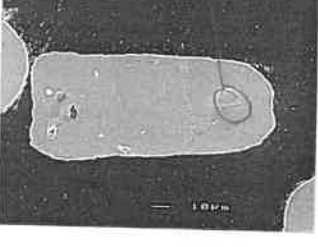
3166±10

7

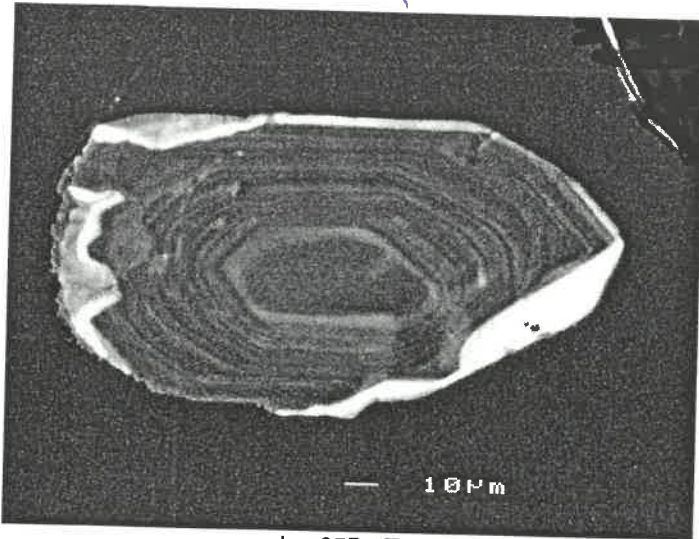


2701±16

8

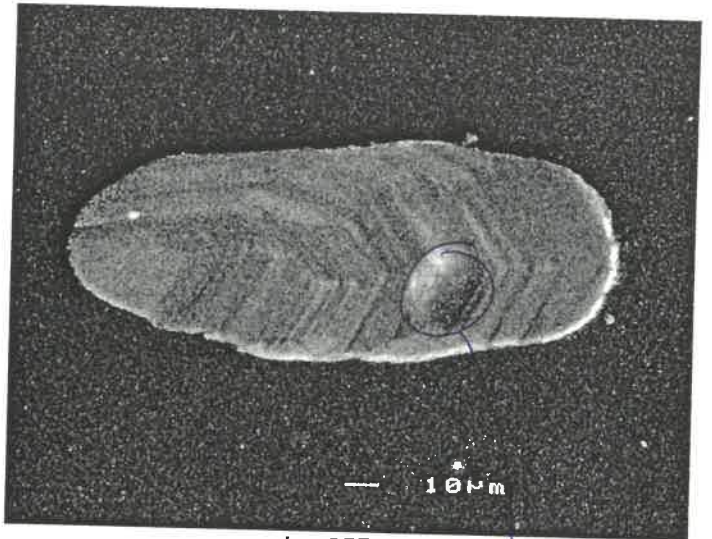


suQ



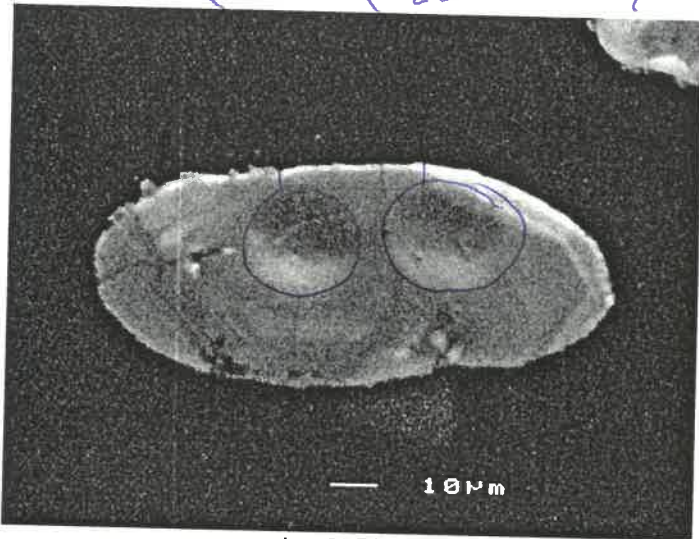
dvzr35Ba.tif
1024x768, 8bit, 778.2KB

b11-1
d31-1 2304±5
d31-2 2302±4
2642±5
S+Q

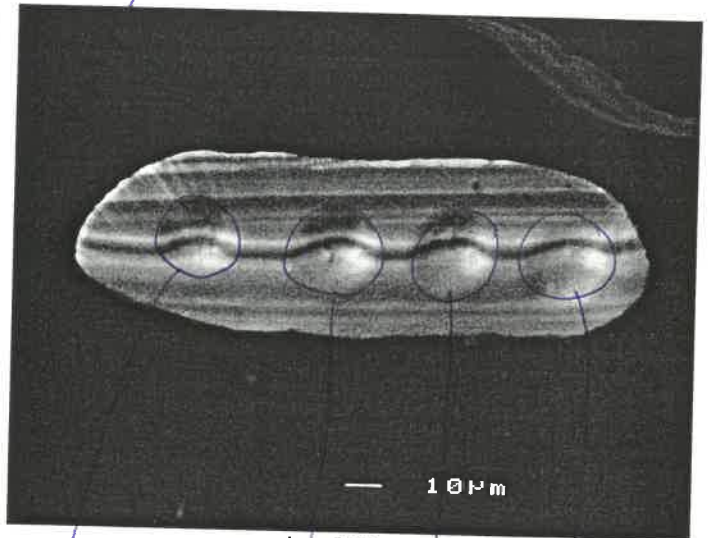


dvzr35Da.tif
1024x768, 8bit, 778.0KB

d37-1
2496±4



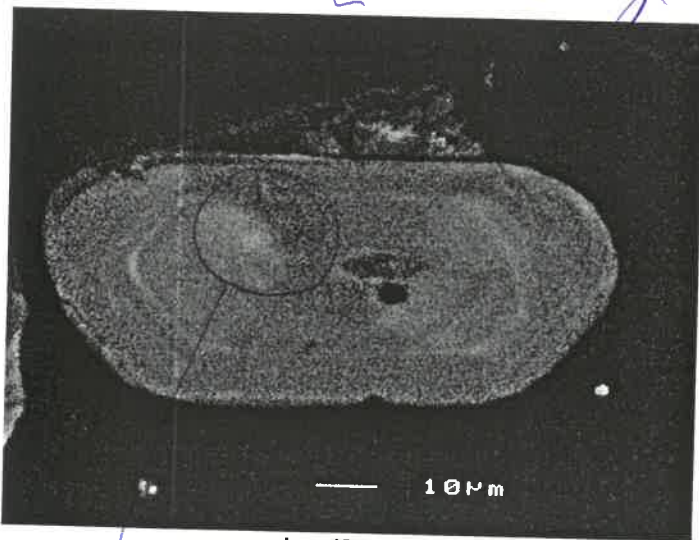
dvzr35Db.tif
1024x768, 8bit, 777.9KB



dvzr35Dc.tif
1024x768, 8bit, 768.2KB

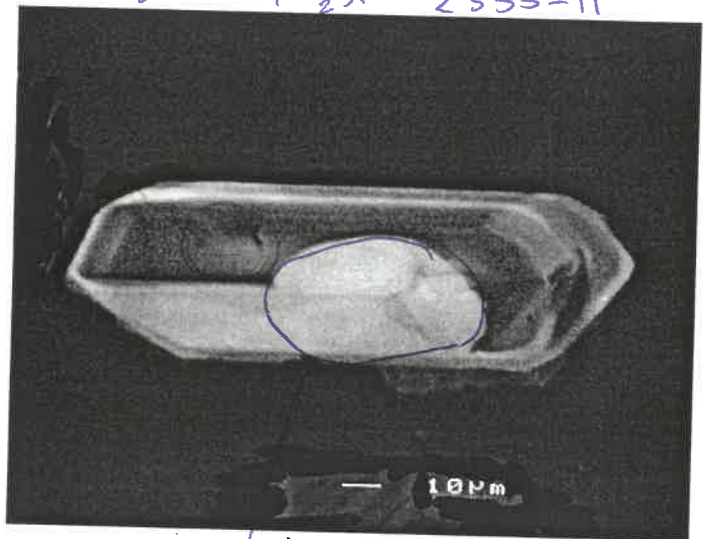
d20-2
2306±9
d20-4
2315±11
d20-3
2333±11
d20-1
2315±9

EL



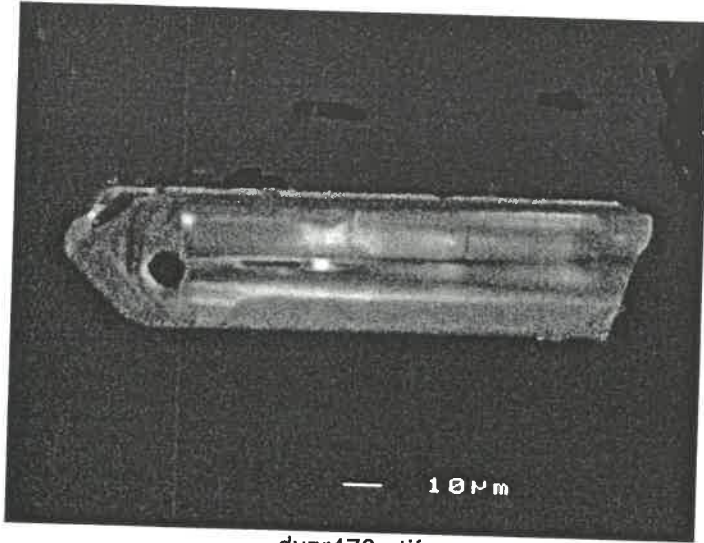
dvzr479a.tif
1024x768, 8bit, 777.4KB

A10-1
2402±7

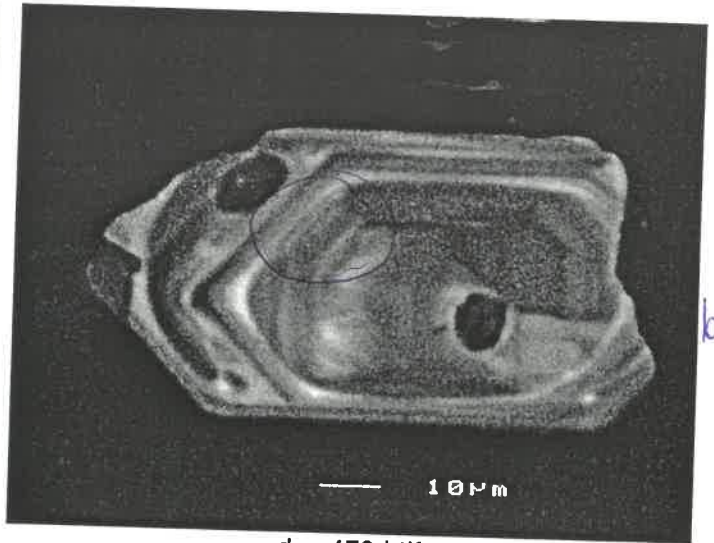


dvzr479b.tif
1024x768, 8bit, 777.4KB

A15-1
2765±10



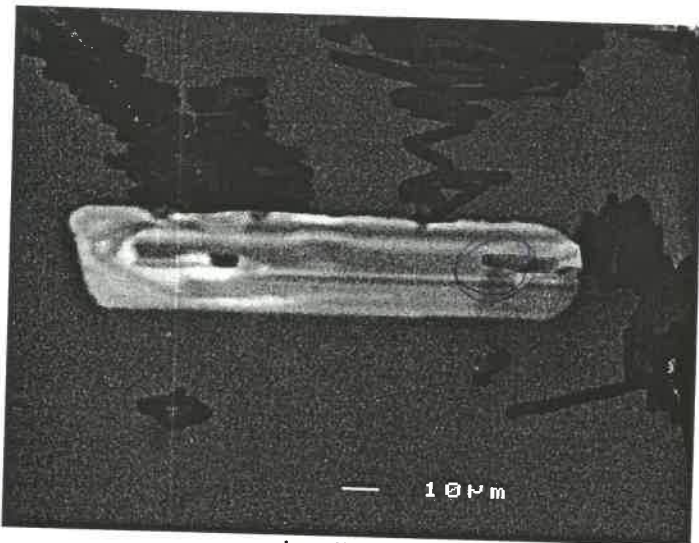
dvzr479c.tif
1024x768, 8bit, 777.3KB



dvzr479d.tif
1024x768, 8bit, 777.8KB

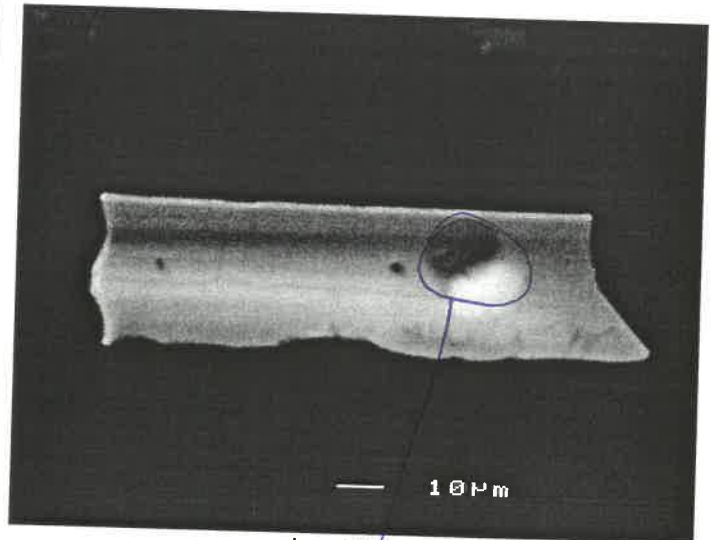
?
bc

A22-1
2309±10



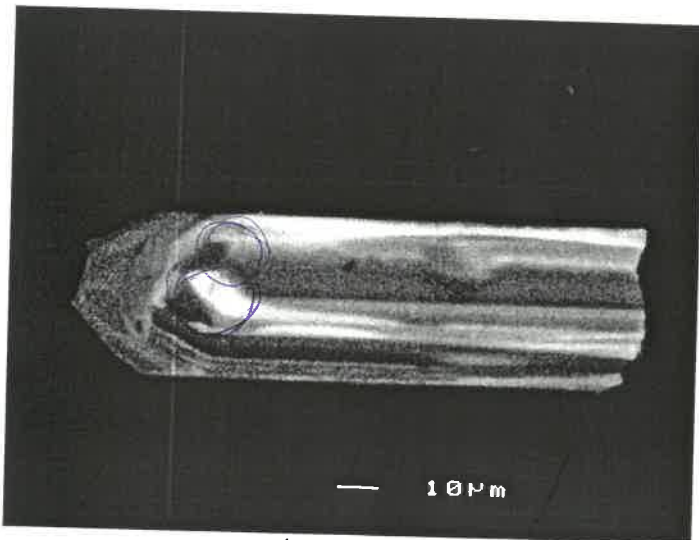
dvzr479e.tif
1024x768, 8bit, 777.4KB

B1-1
loc?, 2314±10



dvzr479f.tif
1024x768, 8bit, 777.1KB

b2-1
2348±30



dvzr479g.tif
1024x768, 8bit, 777.3KB

loc?, 2336±9