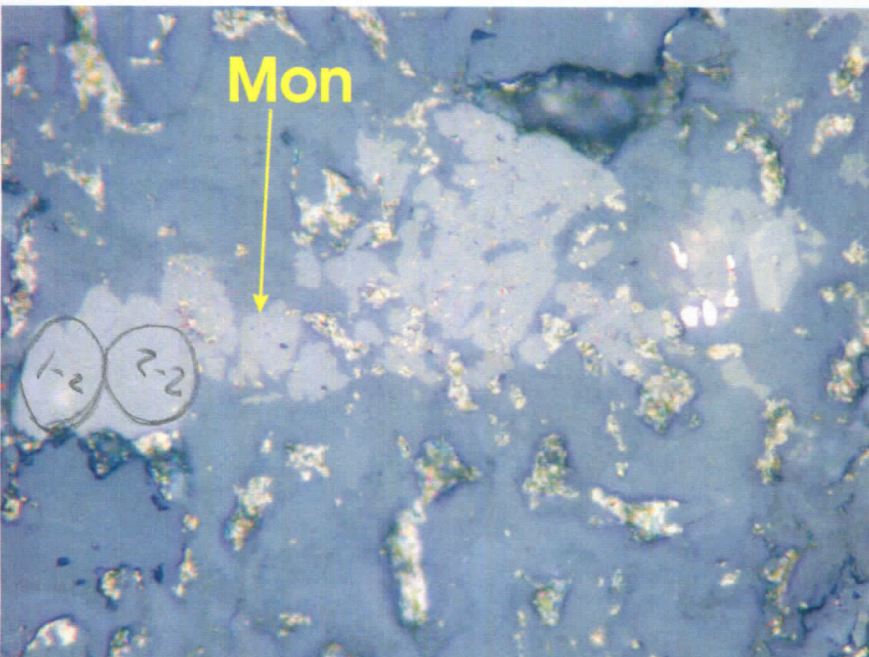
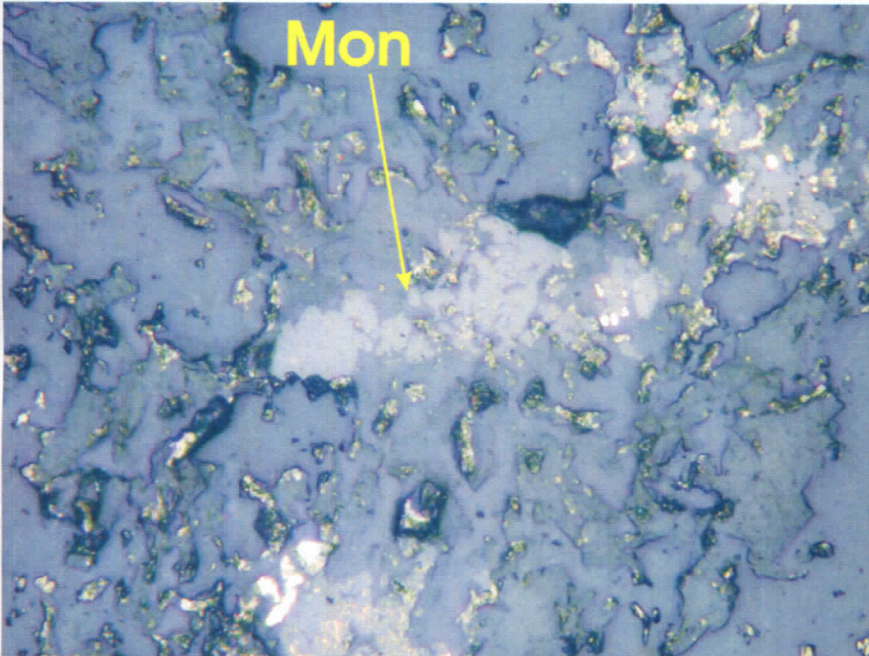
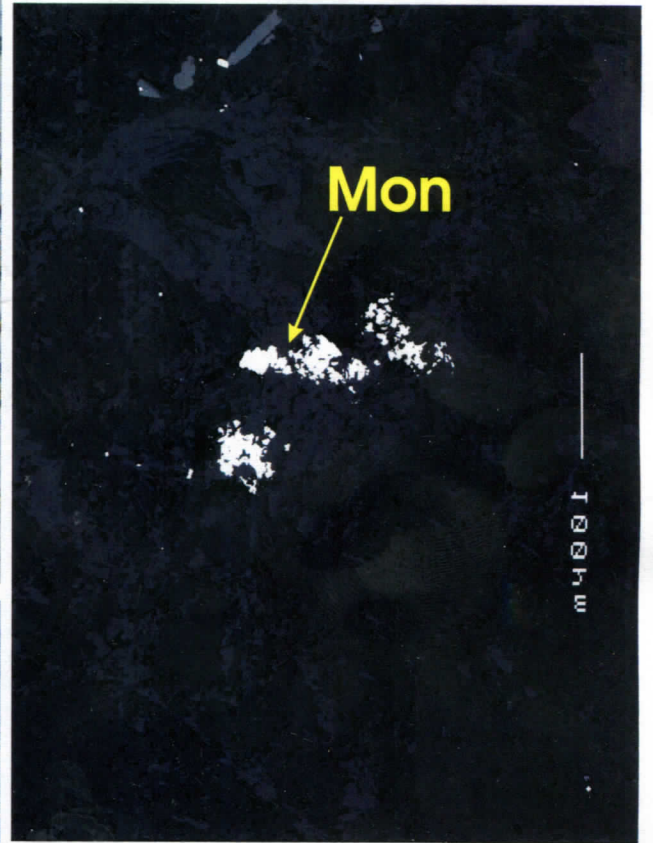
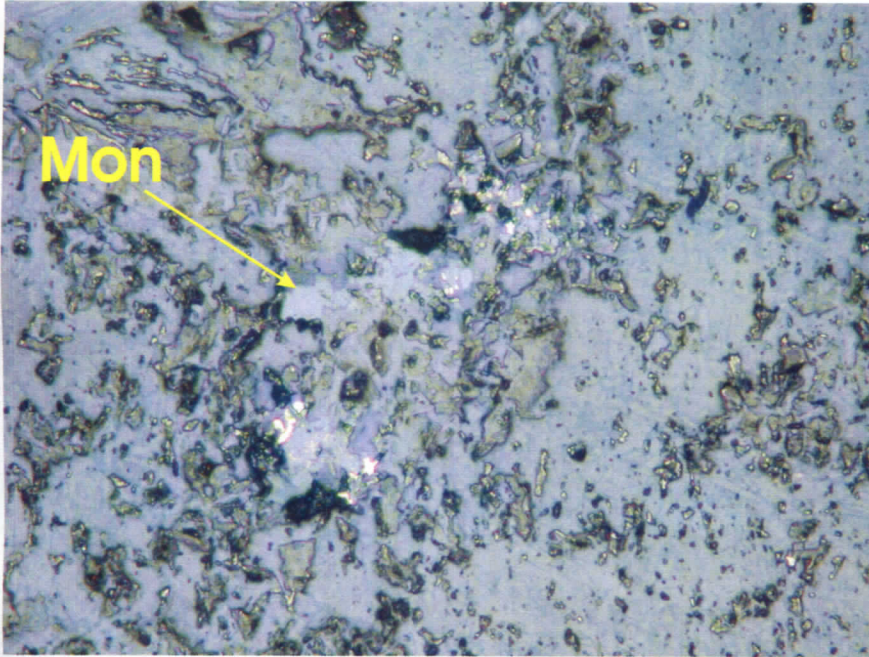


in 95 + w.m.

BSE

Reversed

Reflected Light

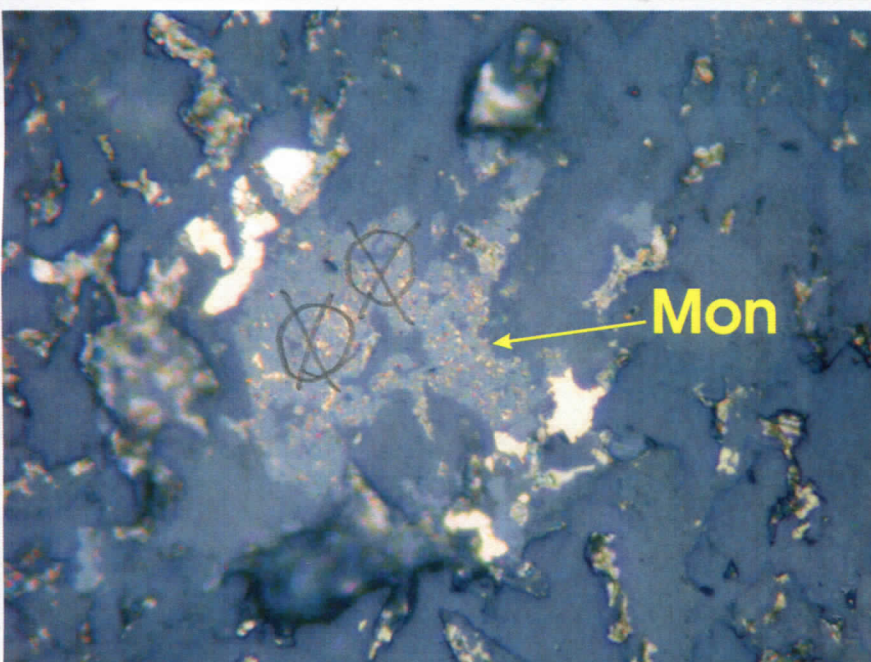
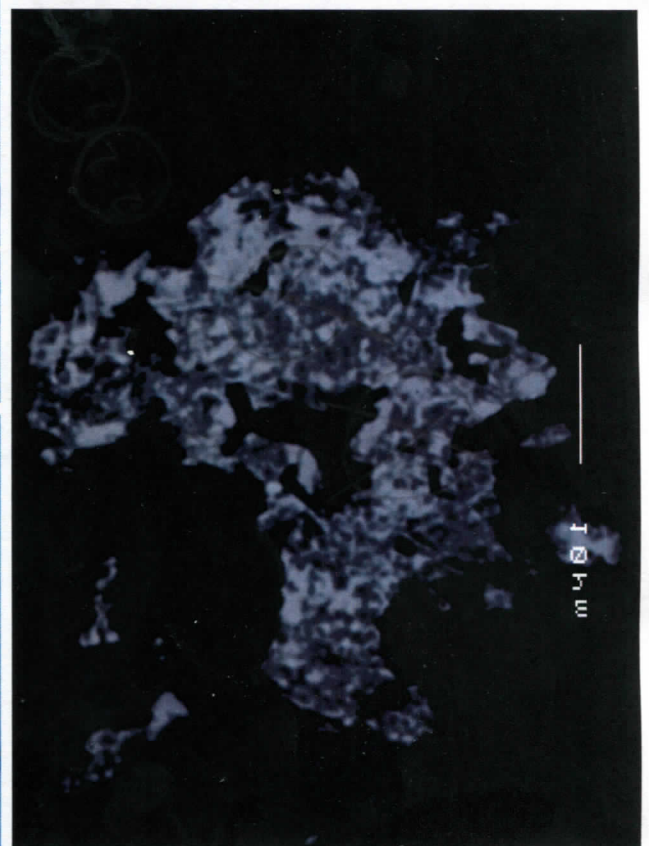
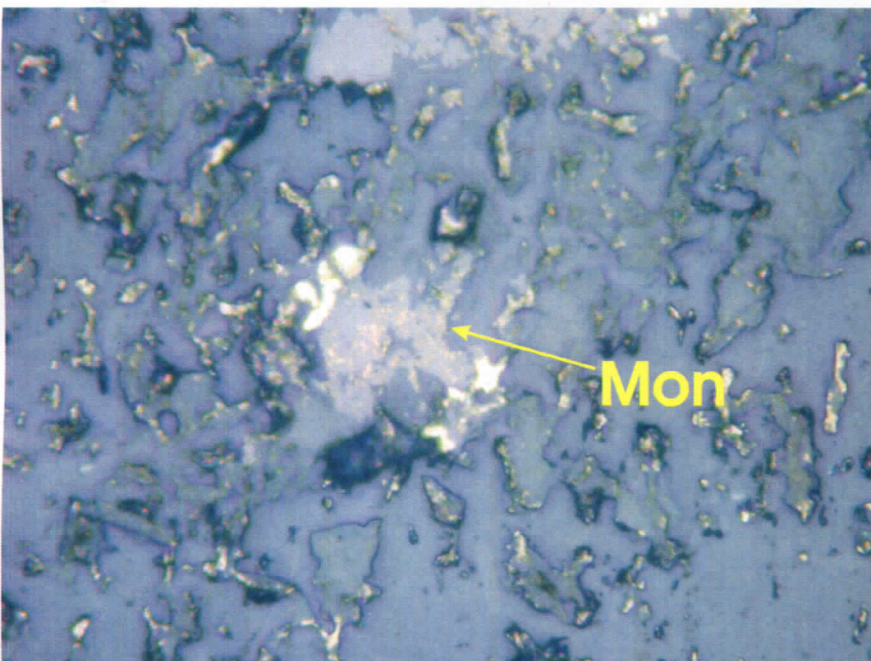
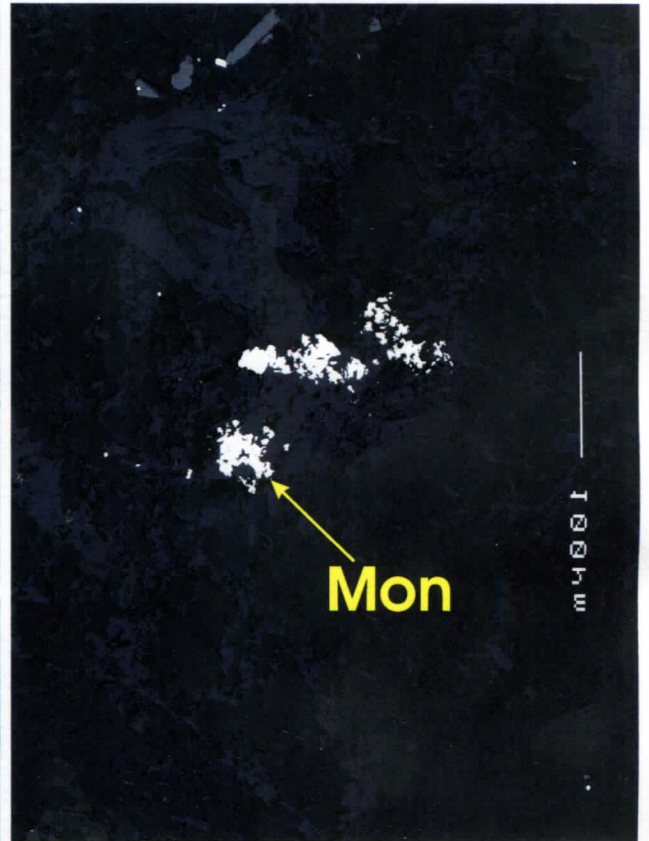
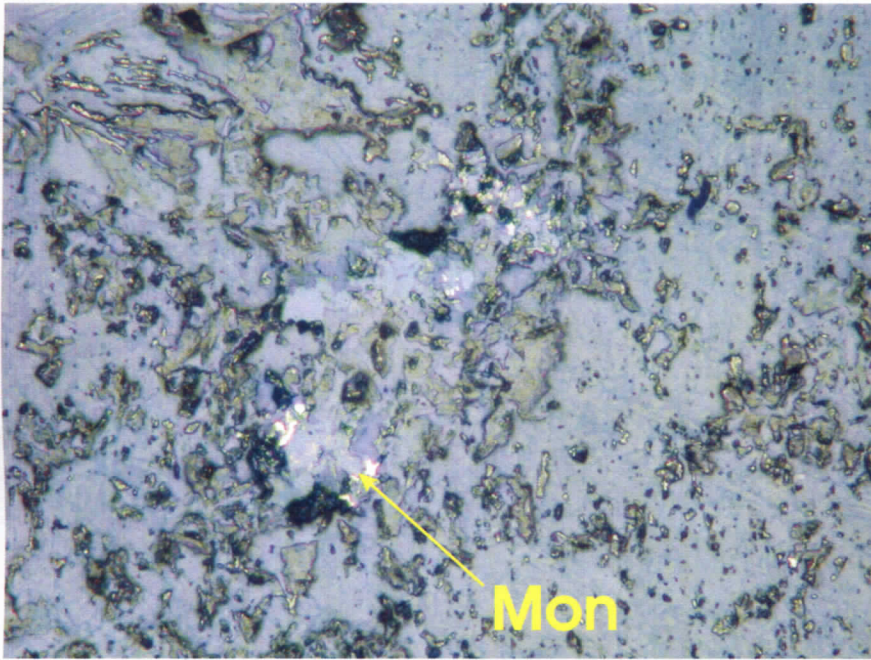


*cpy specks
in w/m*

BSE

Reflected Light

Reversed

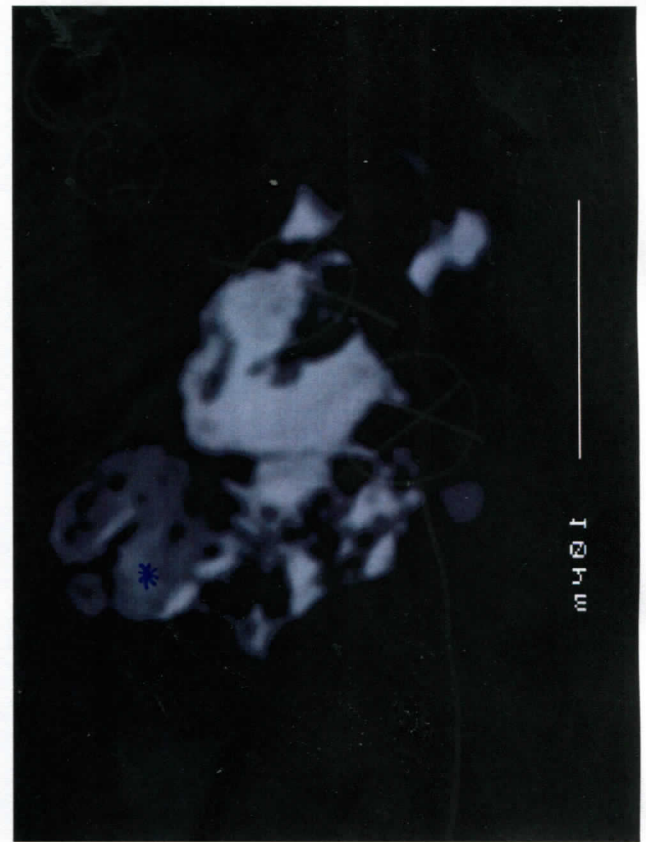
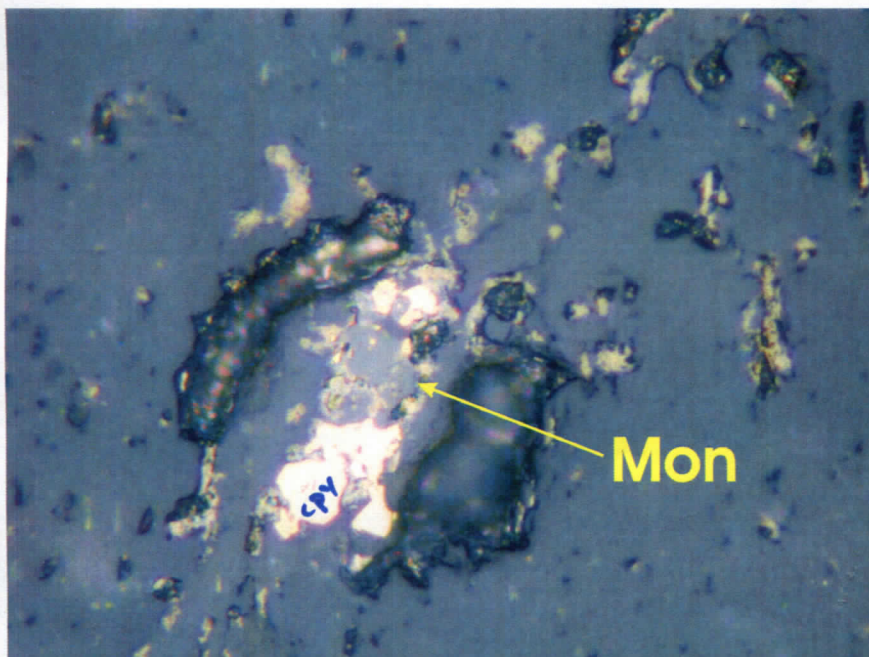
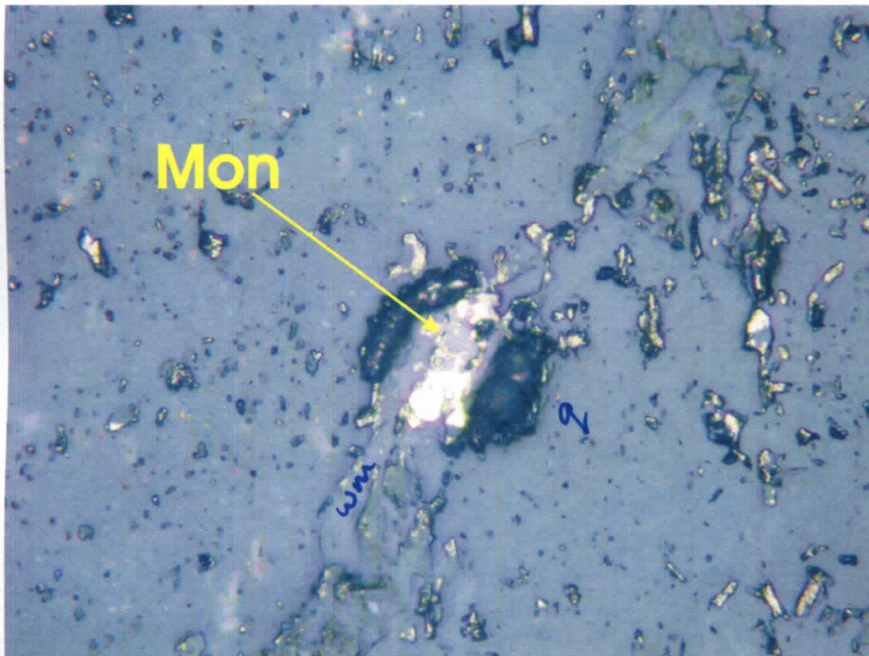
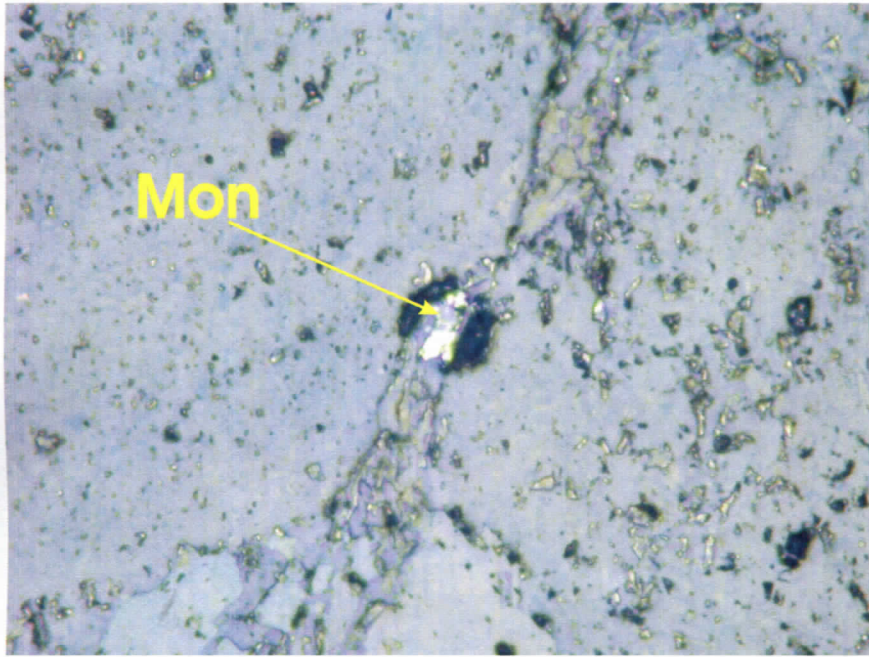


*copy specks
+ mica
inclusions*

BSE

5th Nov 2002 Reversed

Reflected Light



* = Th Zr Si ± Ca (? name)

BSE

Reversed

Reflected Light