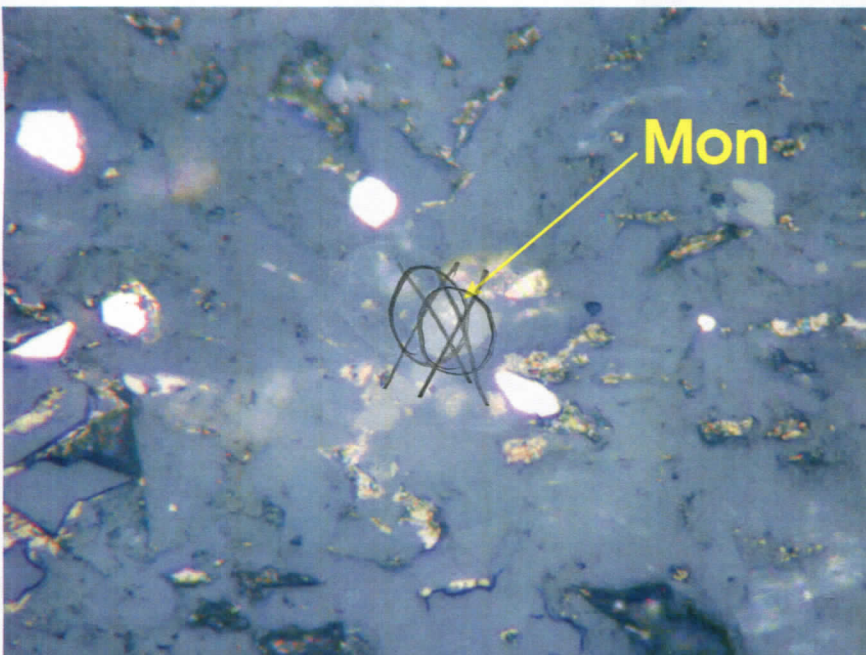
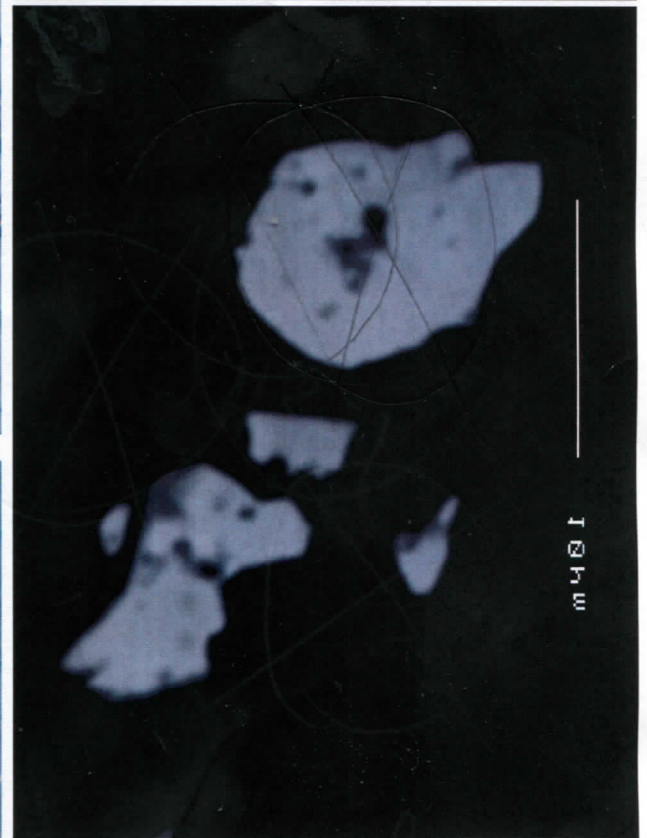
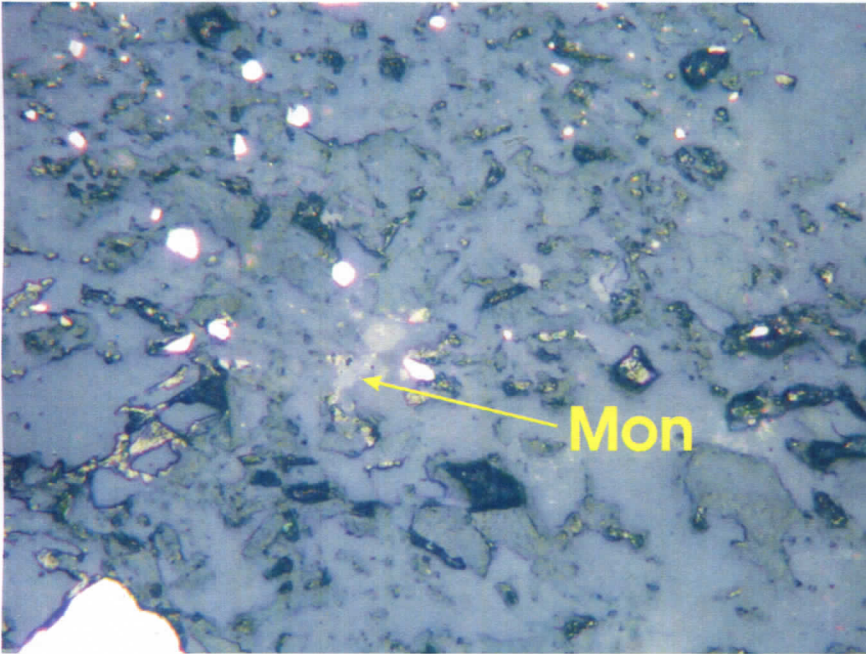
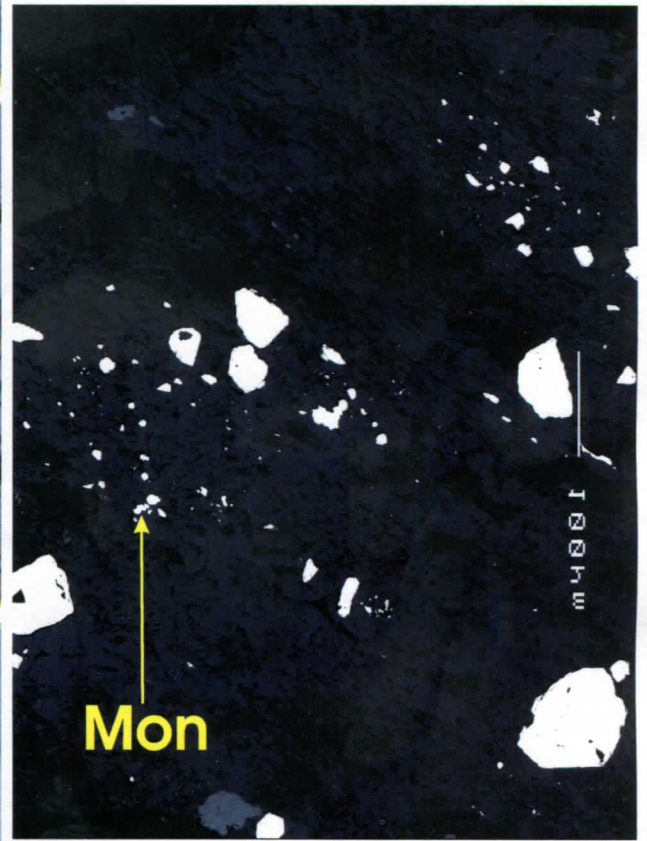
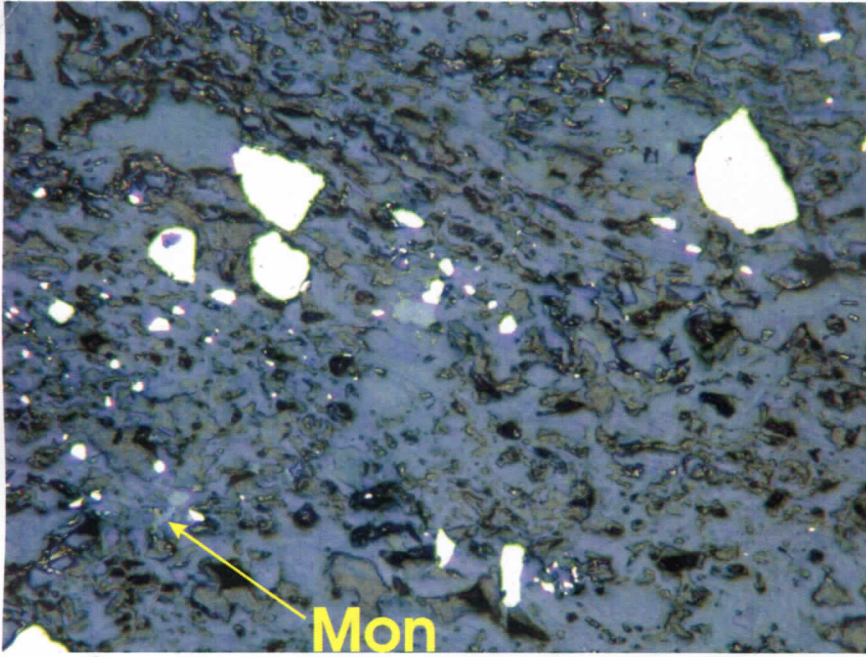


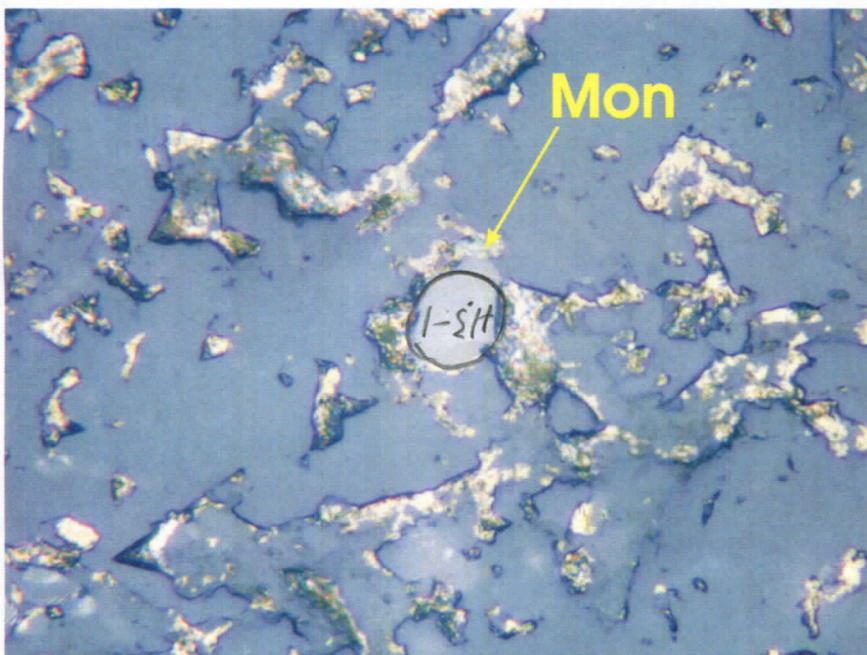
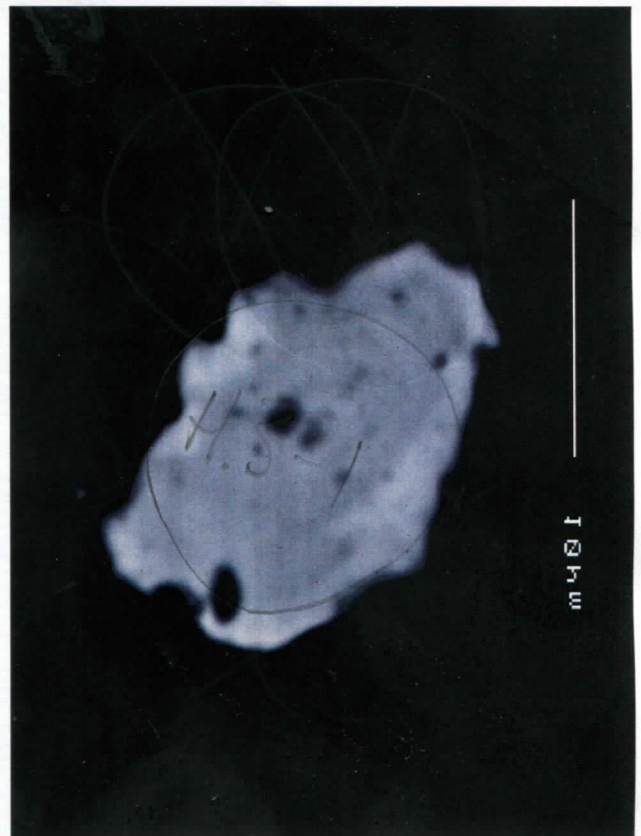
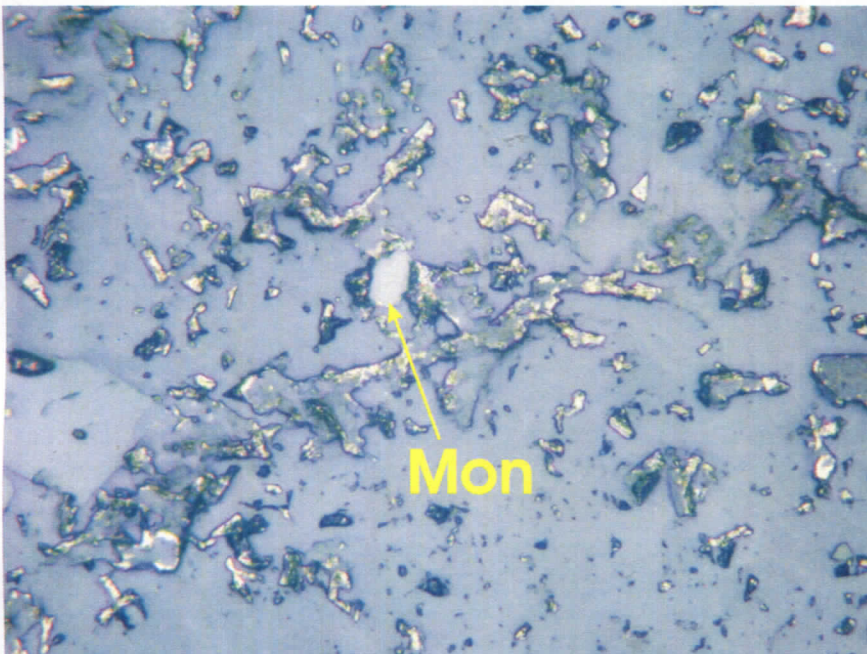
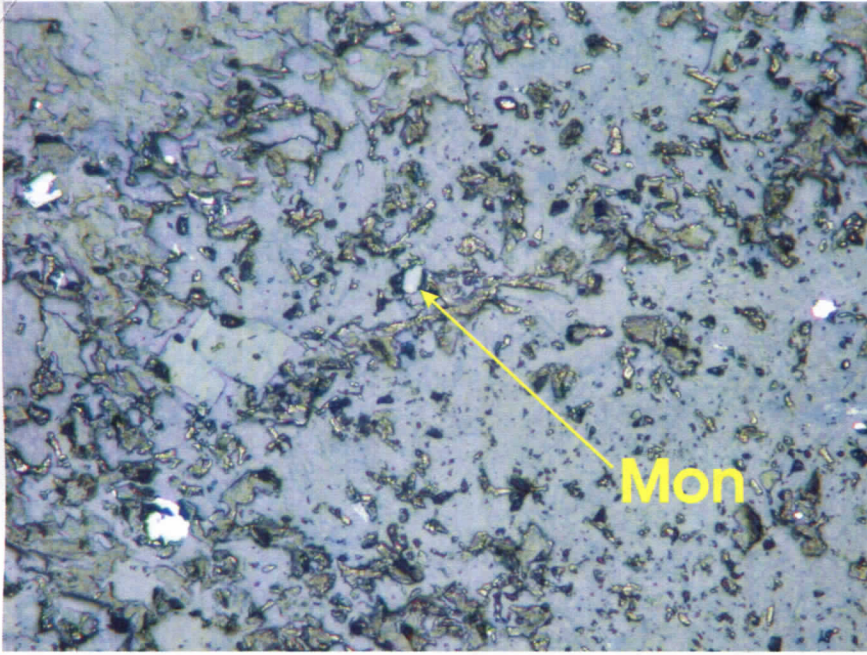
Analyses left cancelled
BSE
due to high Z of Pb.
Even without overlapping
pyr. Le. *overlapping* still seems
to have high Z of Pb??

Reflected Light



Reflected Light

Reversed
Same problem as
H1 - Cont avoid
inclusion of rutile
intergrown with w.mica
BSE



transient incl.

bio/chel inclusion

but from another **BSE**

Reflected Light (i.e. -20 counts or less) 2048g Had some Reversed