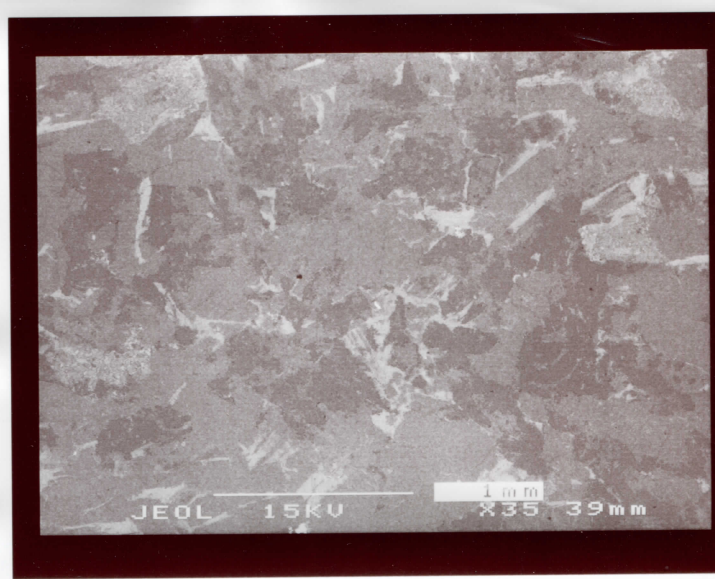


JEOL 15KV 1mm F2 L0 1mm F2 L01  
X10 39mm X10 39mm

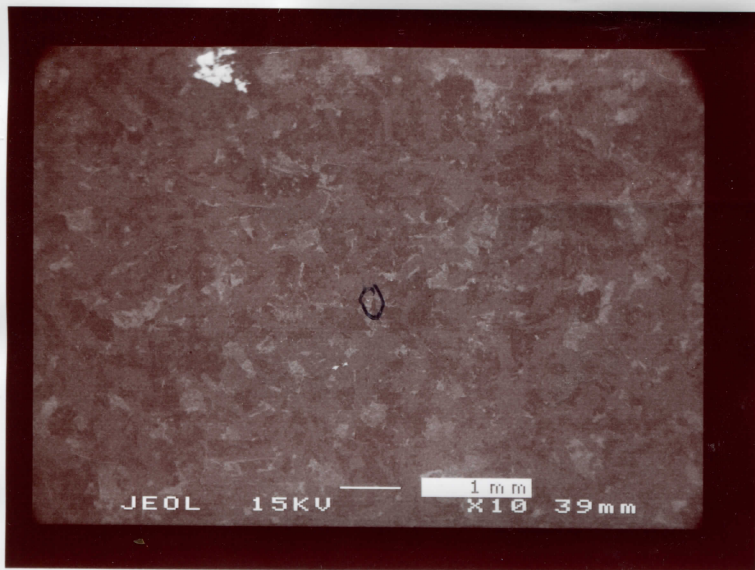




48/6 (1) Bad + Zv



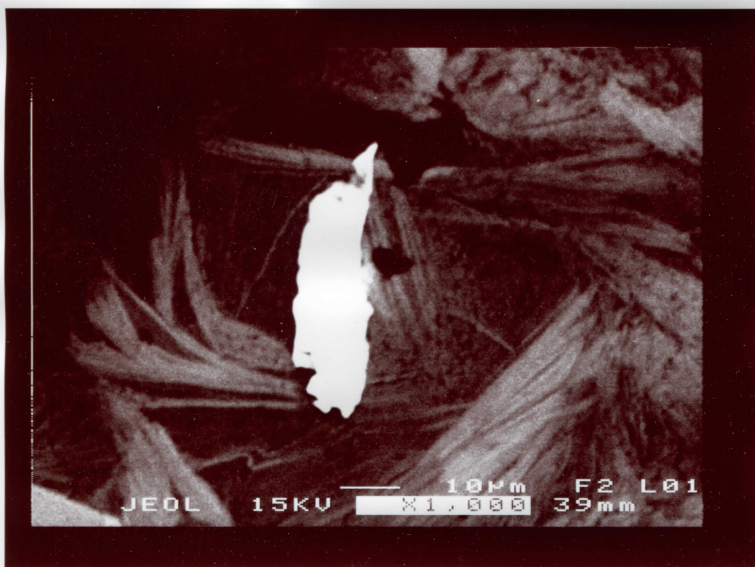
48/6 1.)



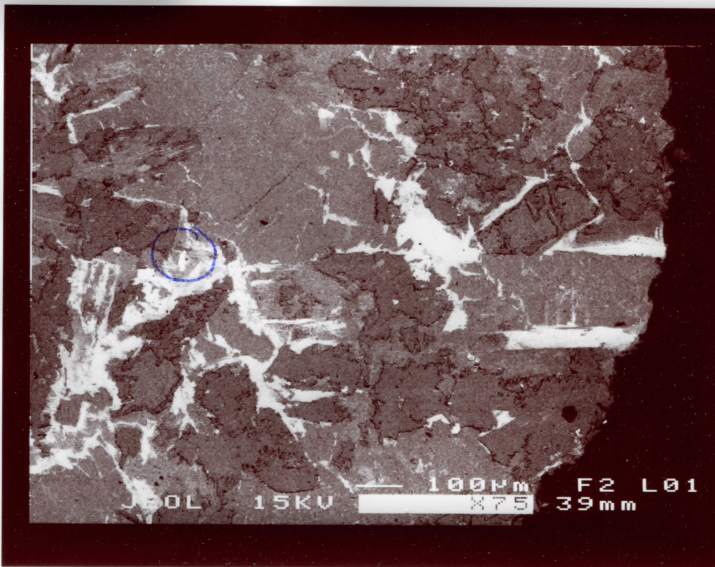
48/6 1.)



1

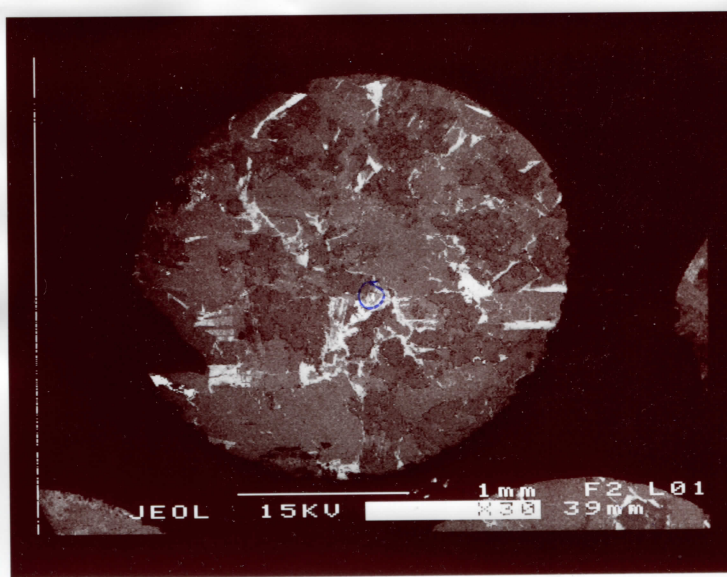
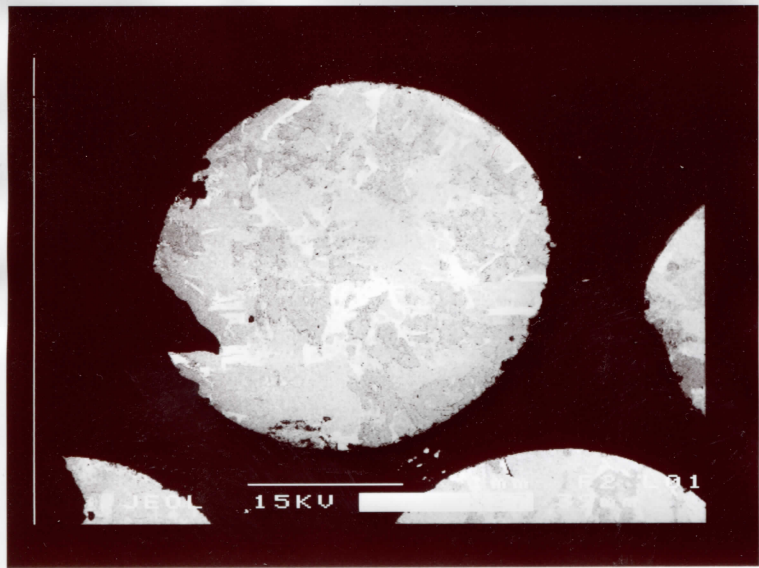


1

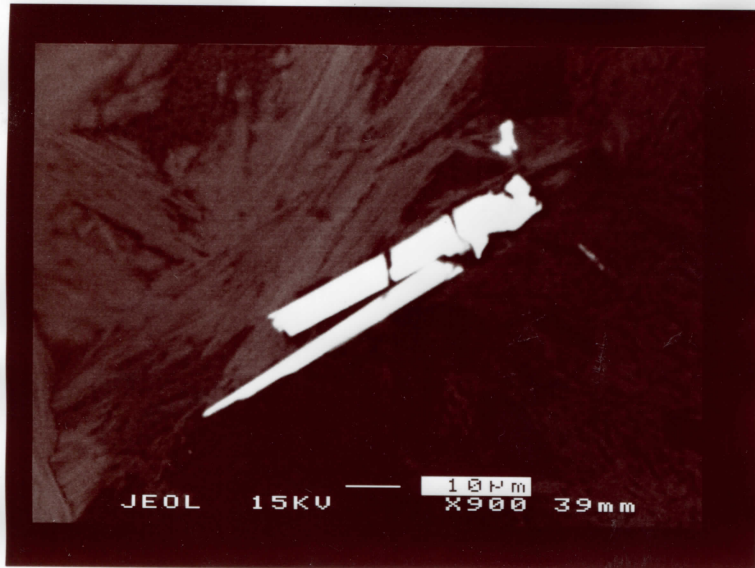


1

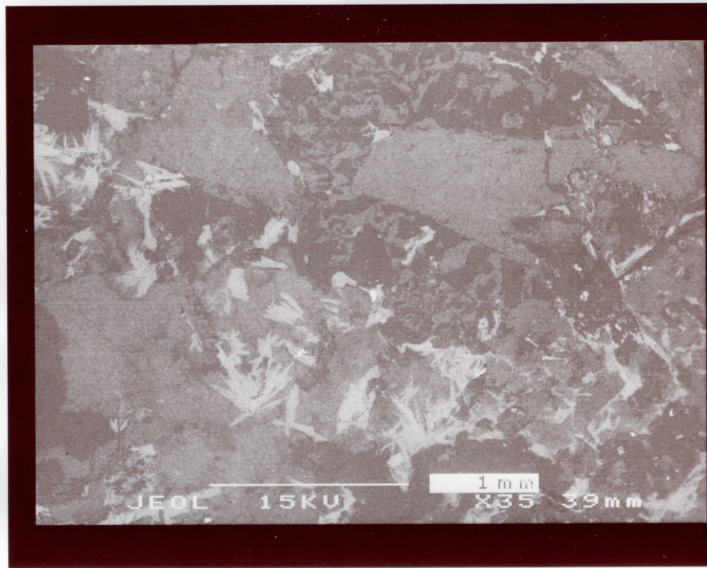




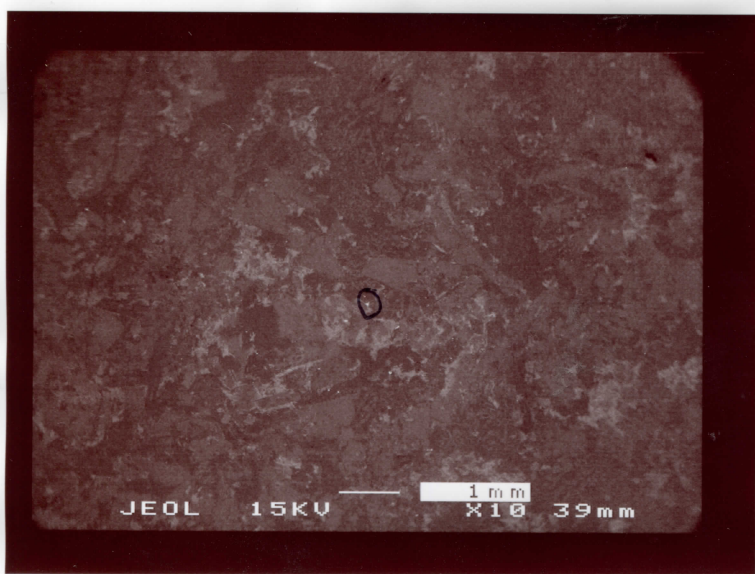




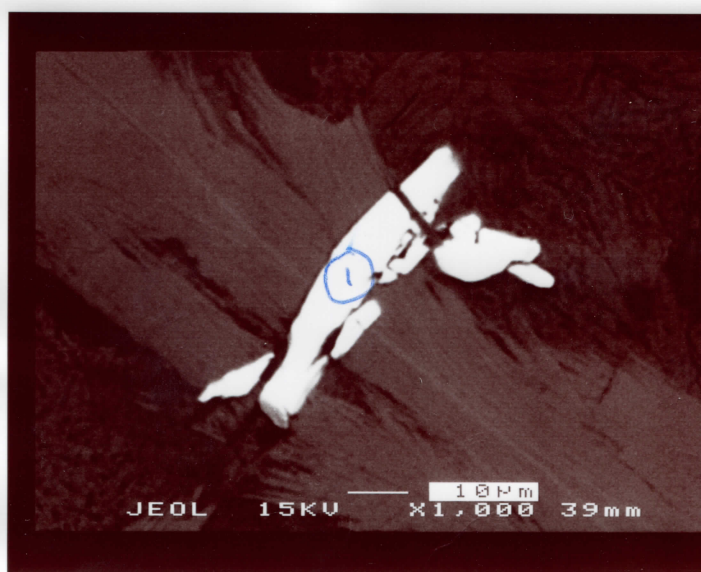
48102 9.) Bad



48102 7.)+8.)+9.)

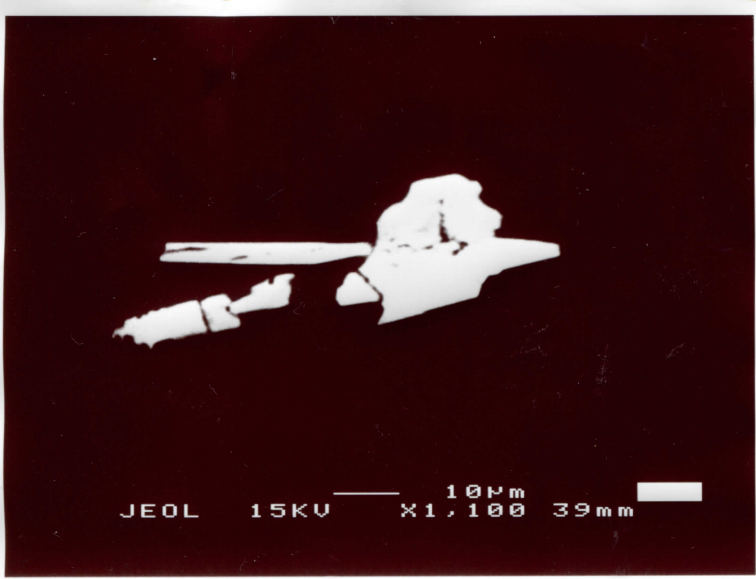


48102 7.)+8.)+9.)



48102 8.) Bad



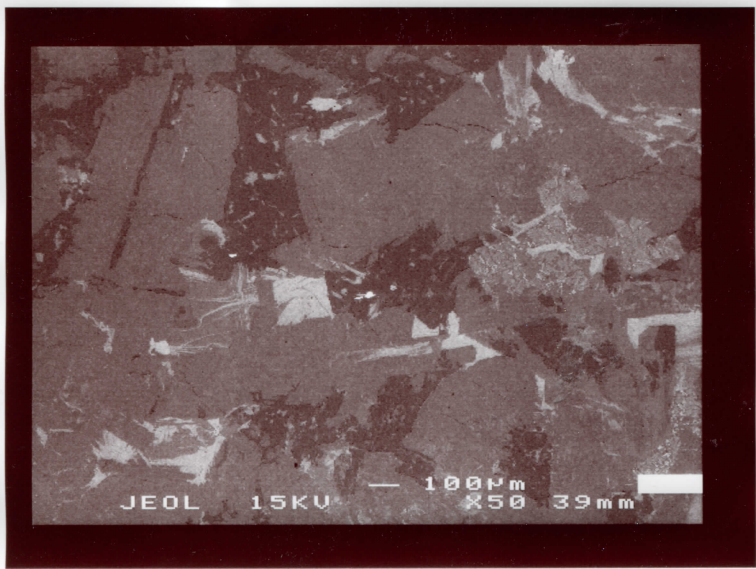


489.2

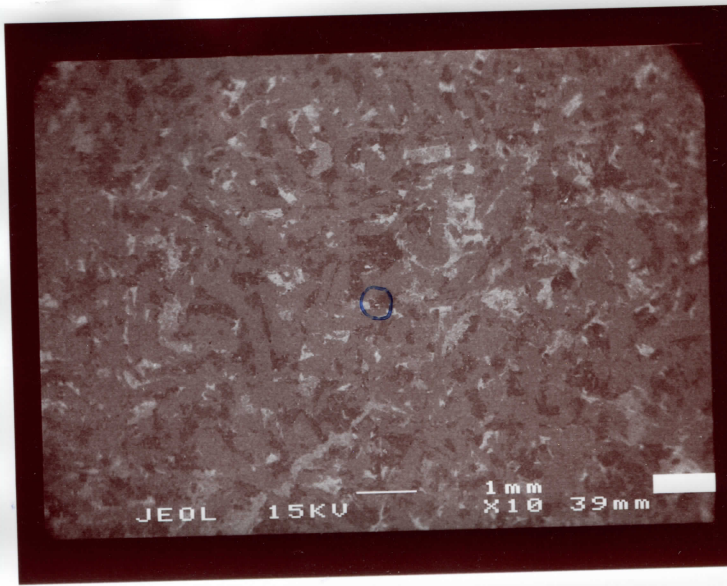
Bad (4)



489.2

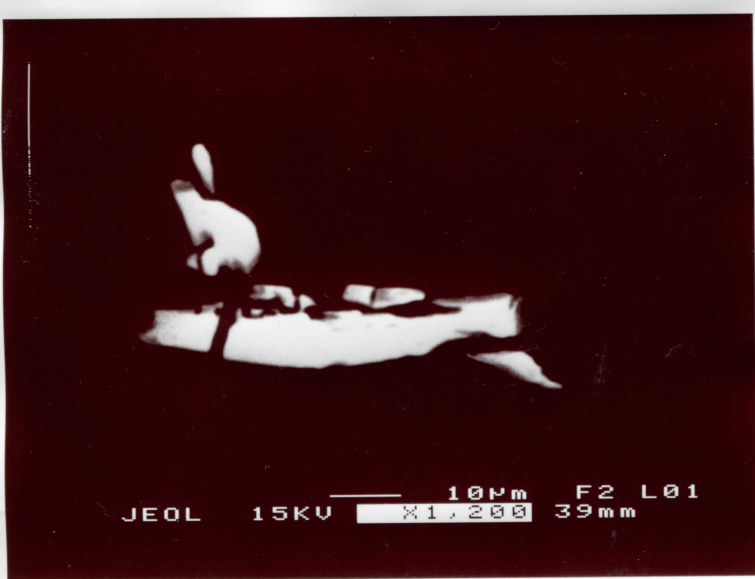


489.2



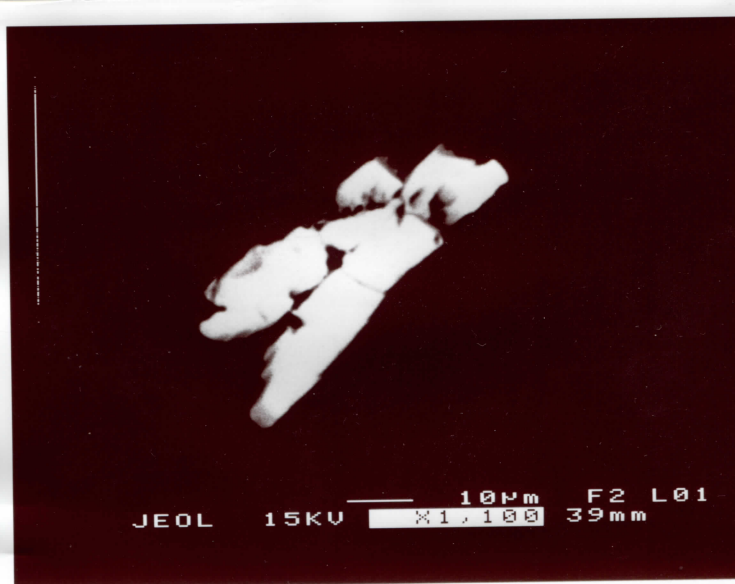
489.2





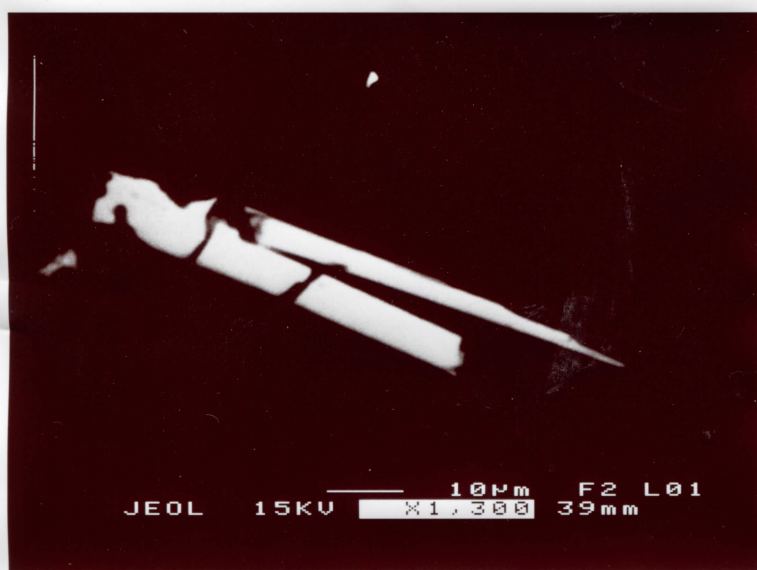
3b

48/2



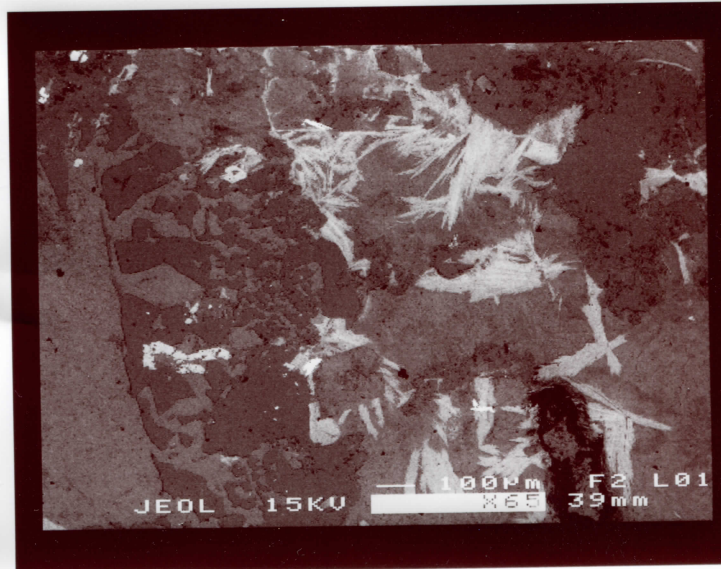
3a

48/2

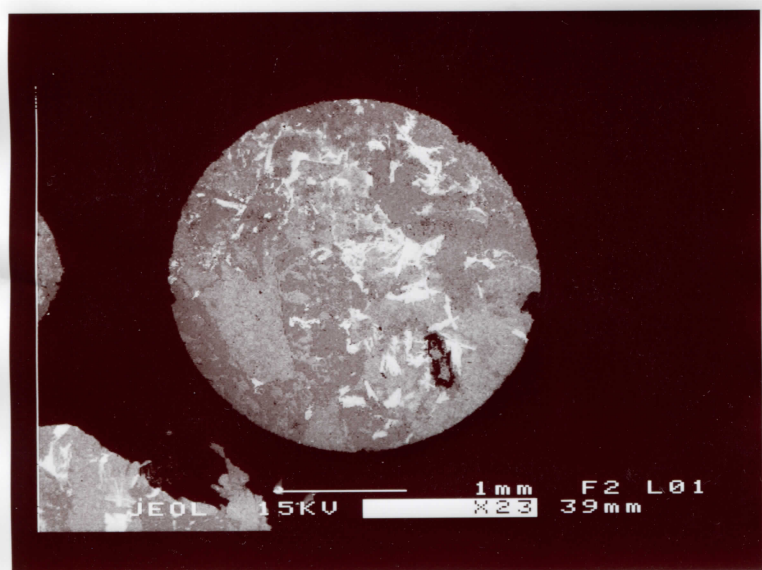


3c

48/2



3



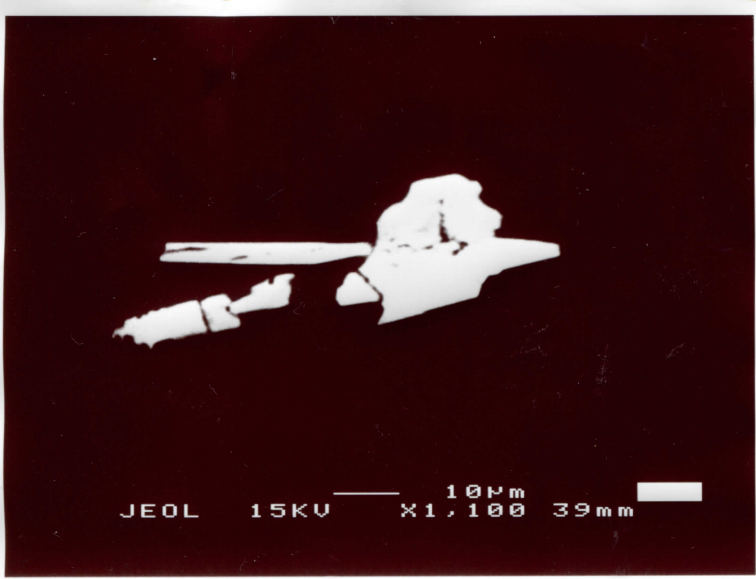
3



48/2

7.) Rad



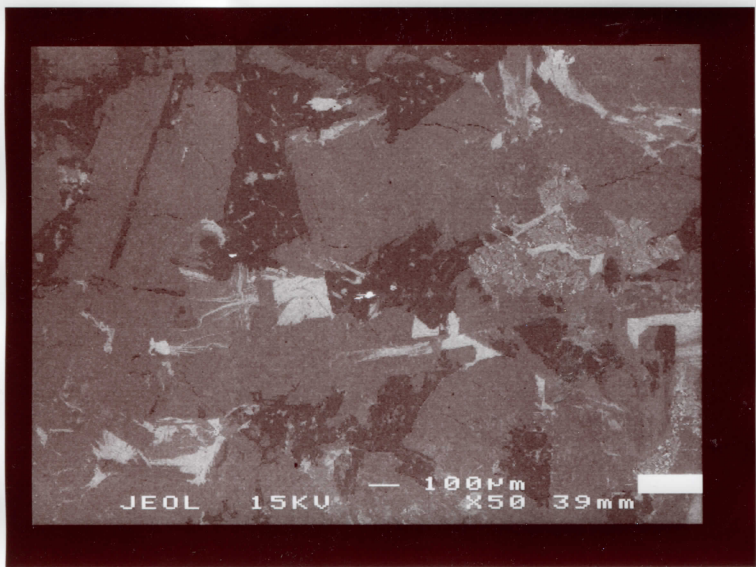


489.2

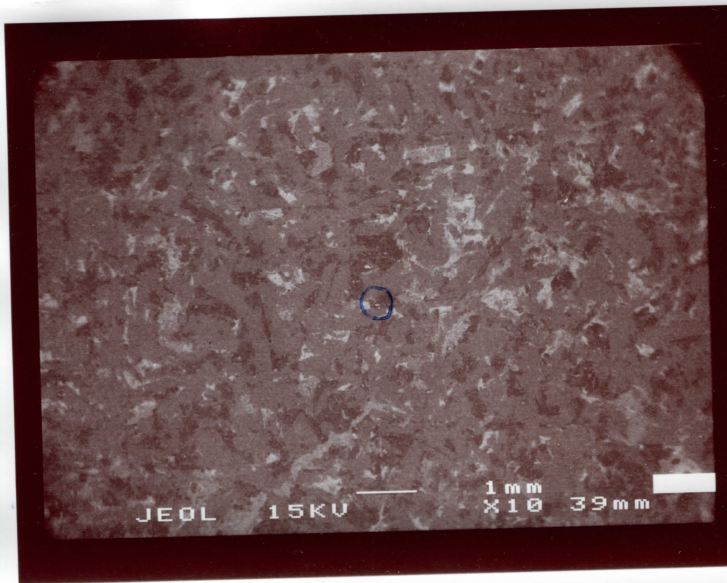
Bad (4)



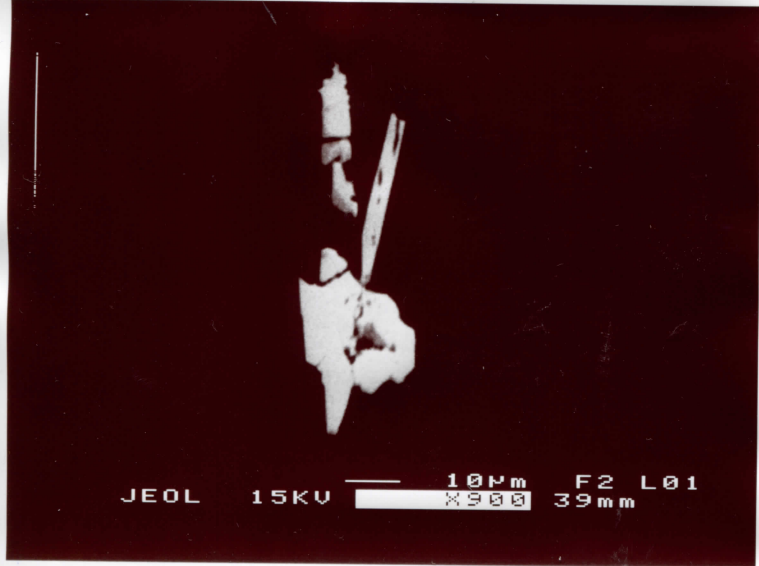
489.2



489.2

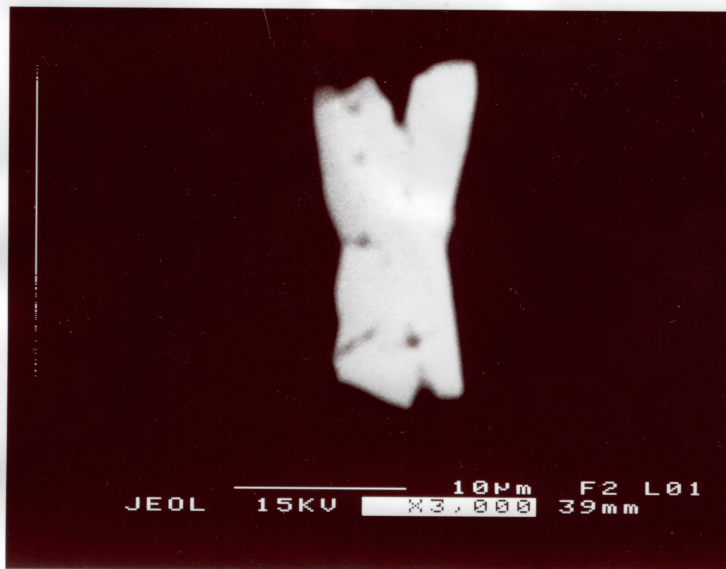


489.2

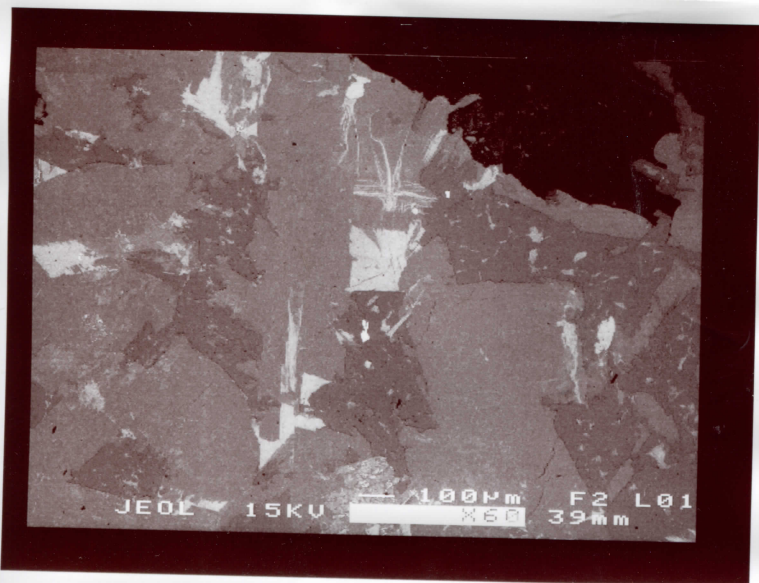


④

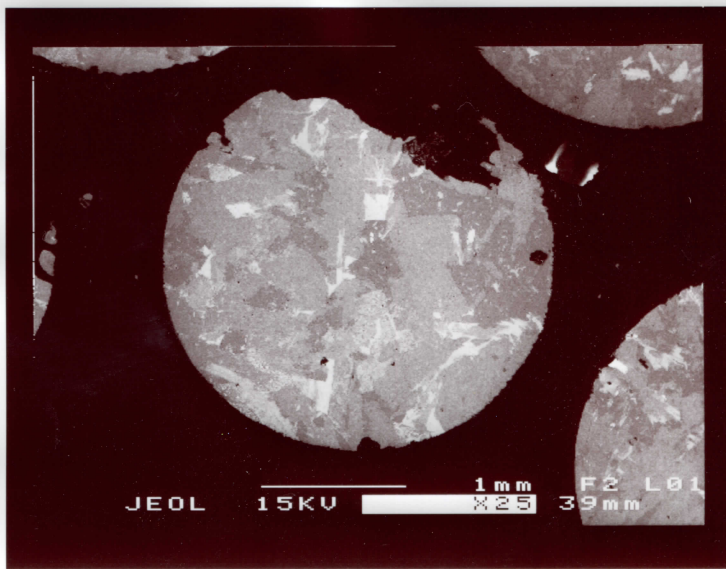
489.2



4

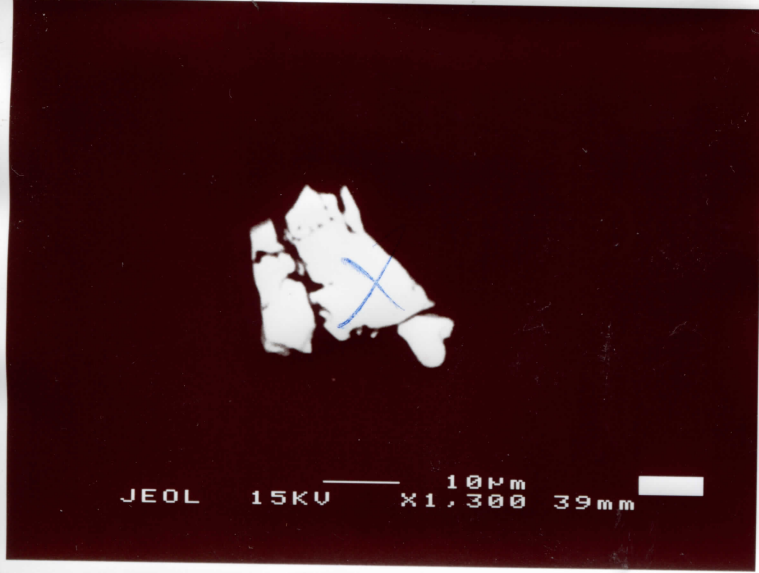


4

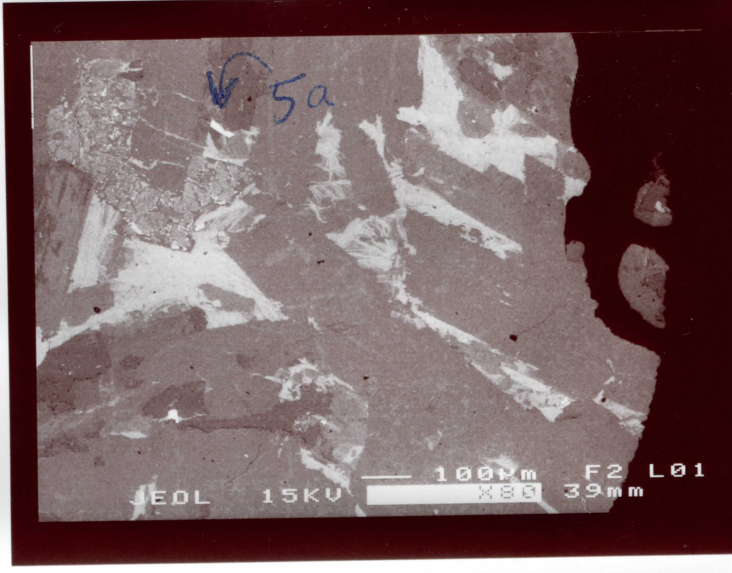


4

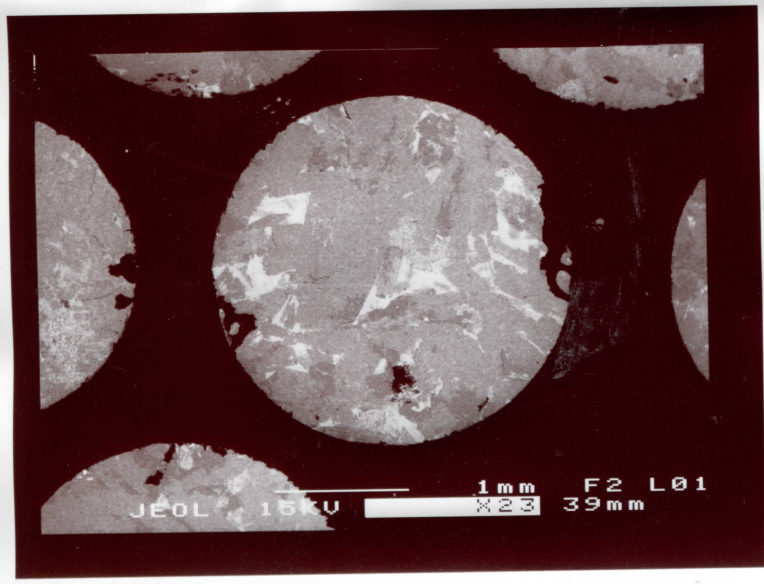




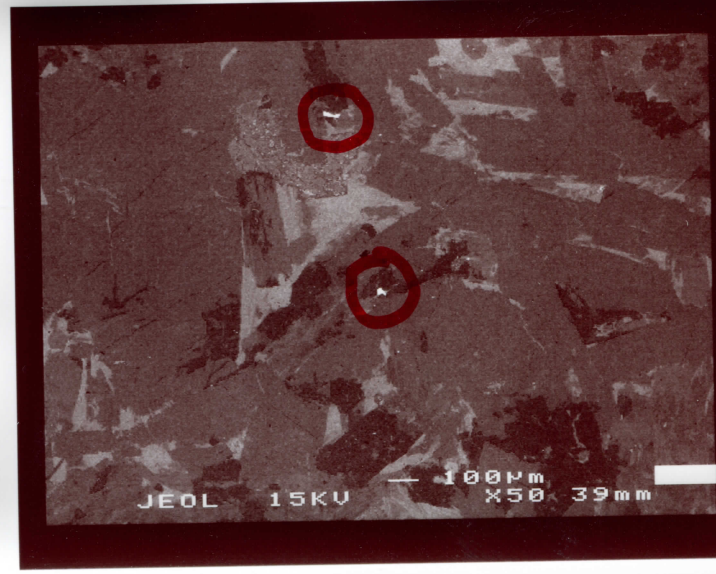
489.7 (5a) **Bod + B!!!**



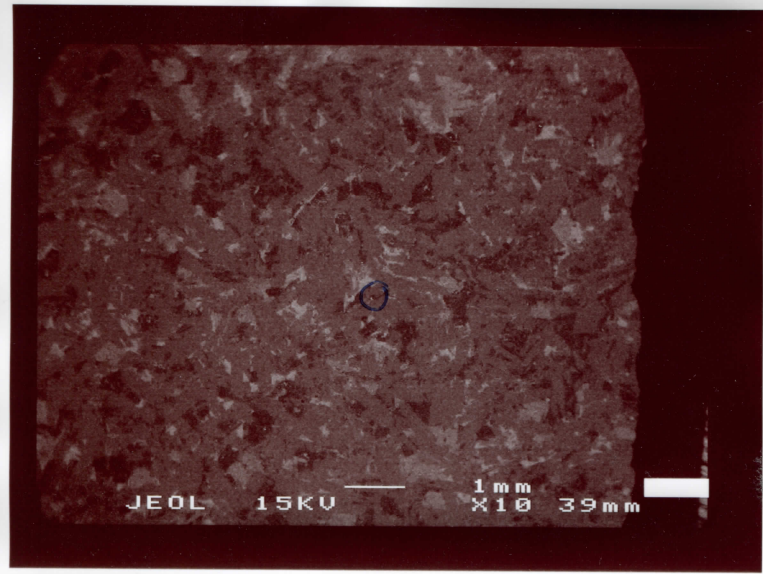
5a Zv



5



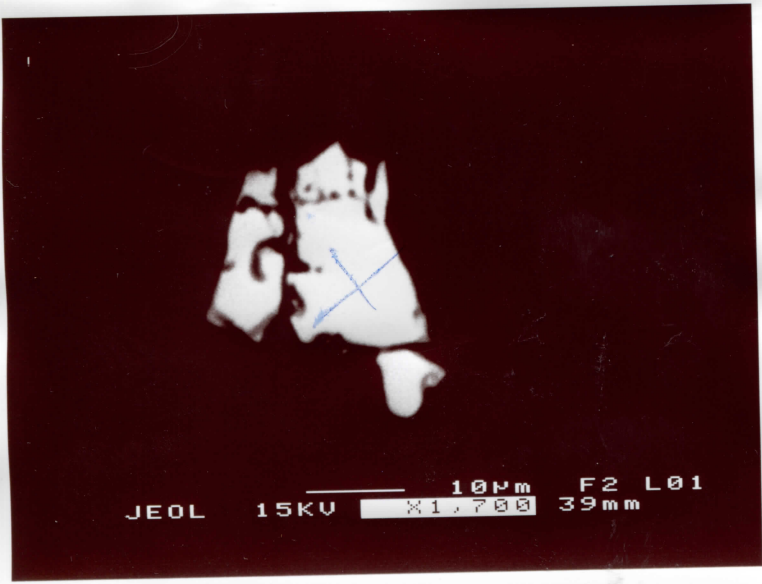
489.7



489.7

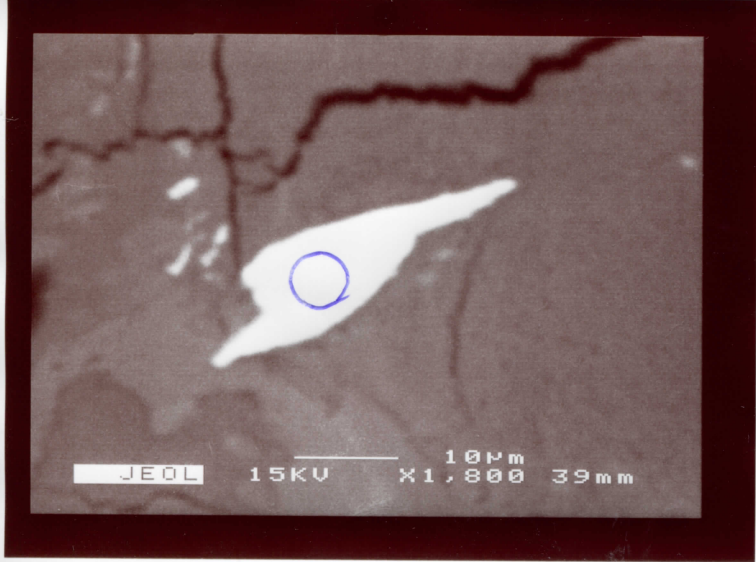


489.7

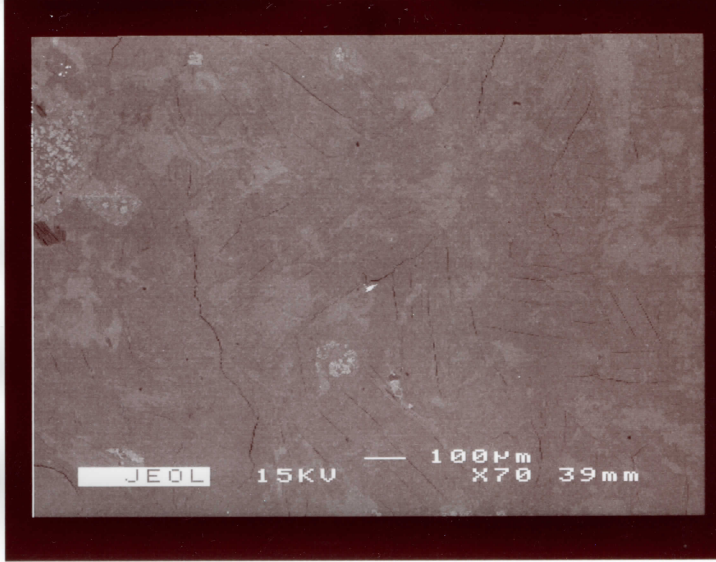


56

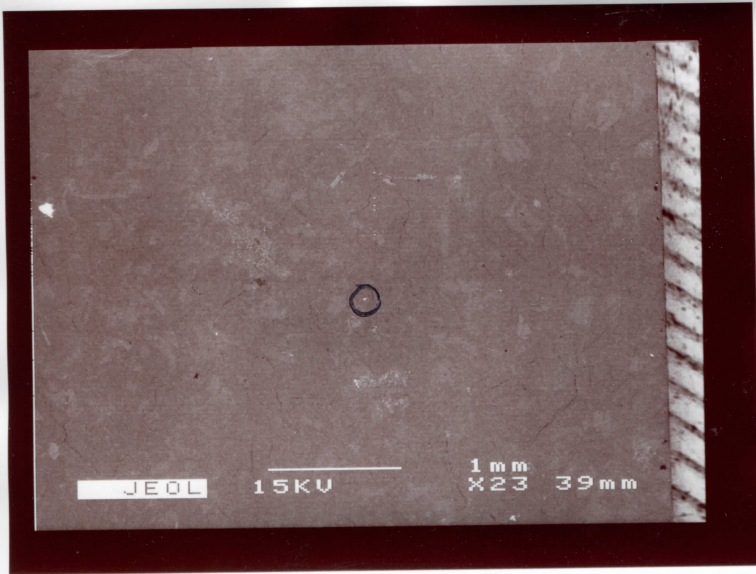




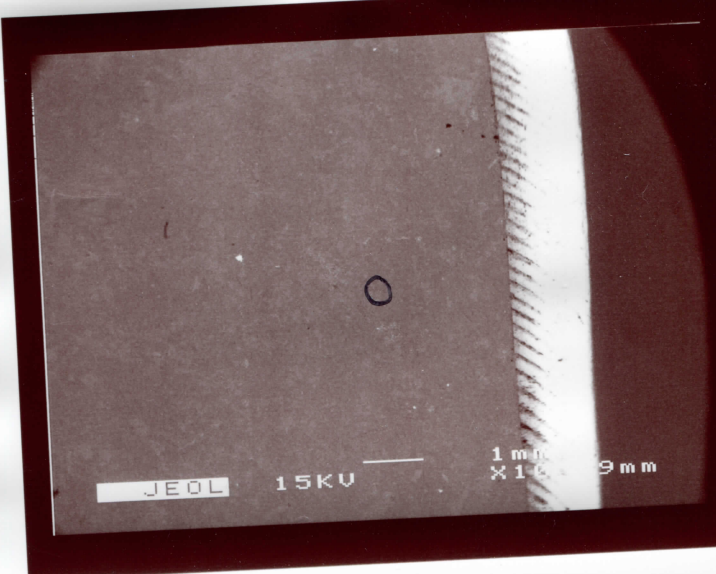
tp 9



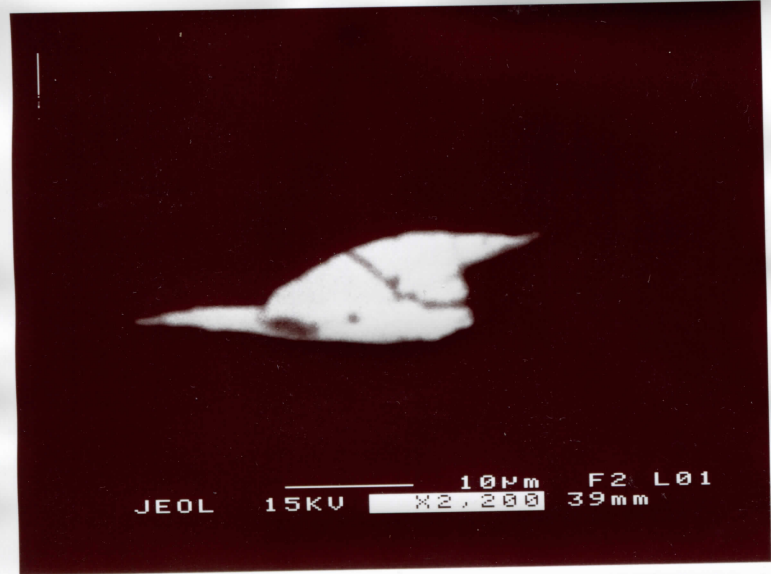
tp 9



tp 9



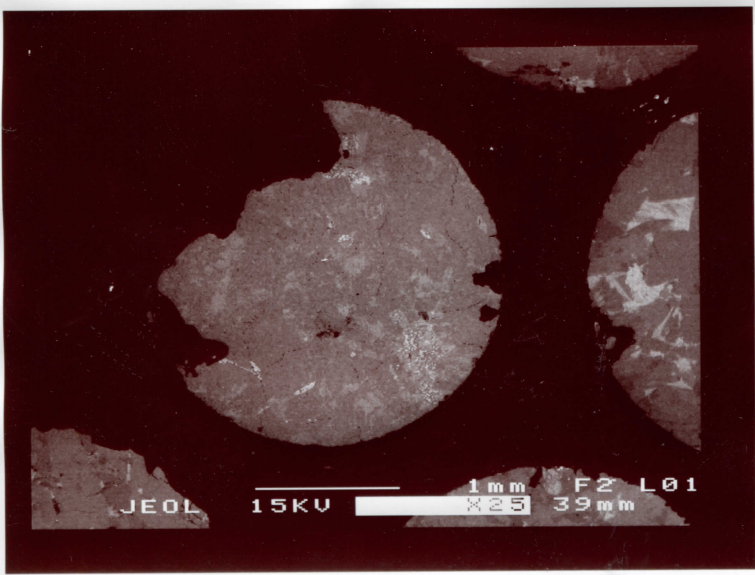
tp 9



6

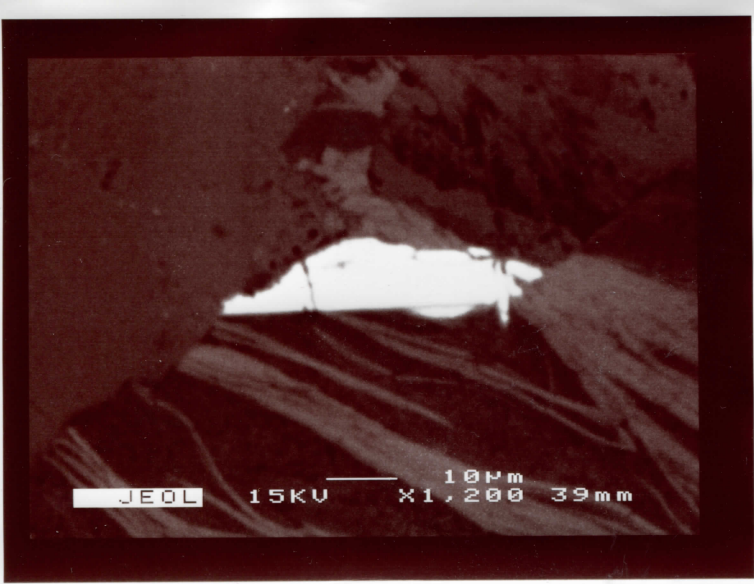


6

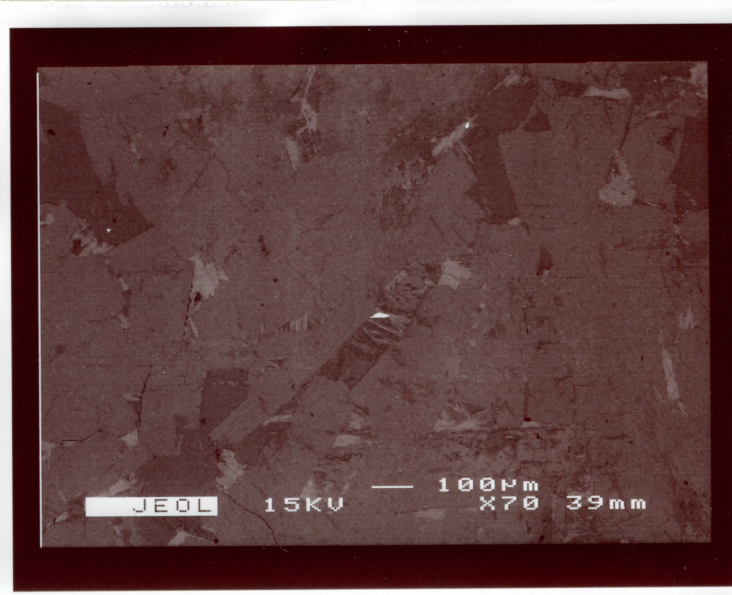


6





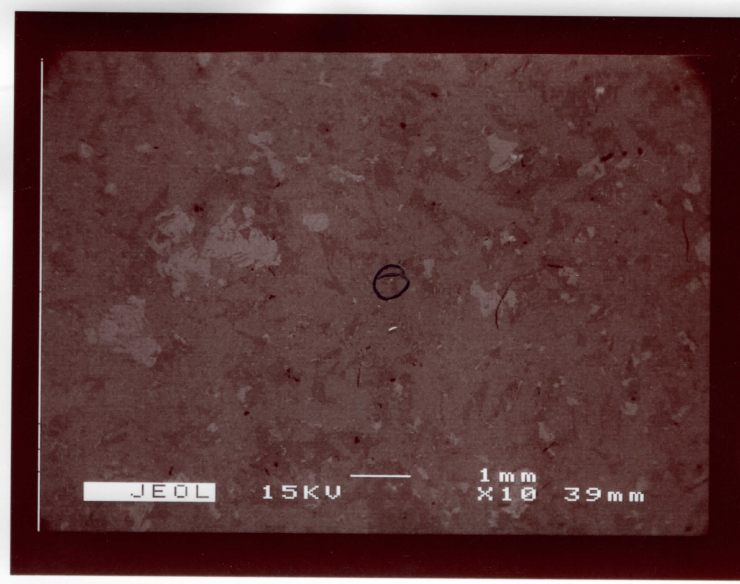
5324.9 (7)



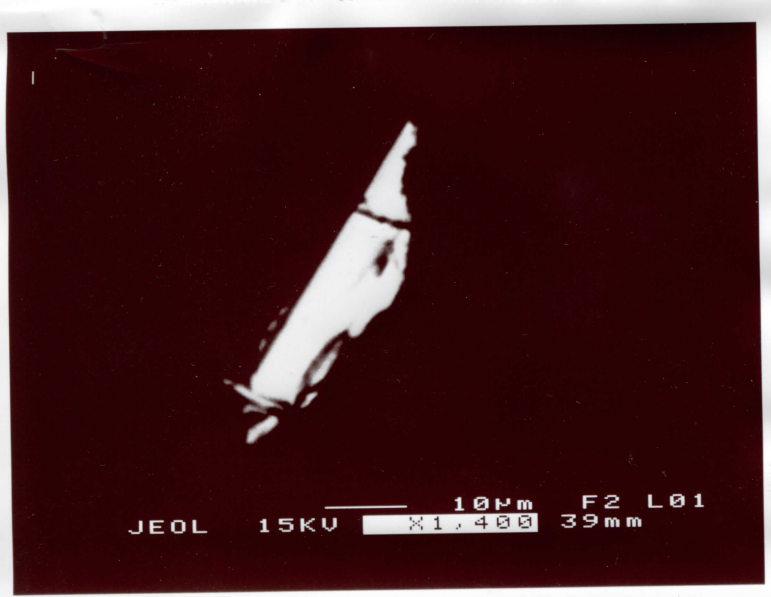
5324.9



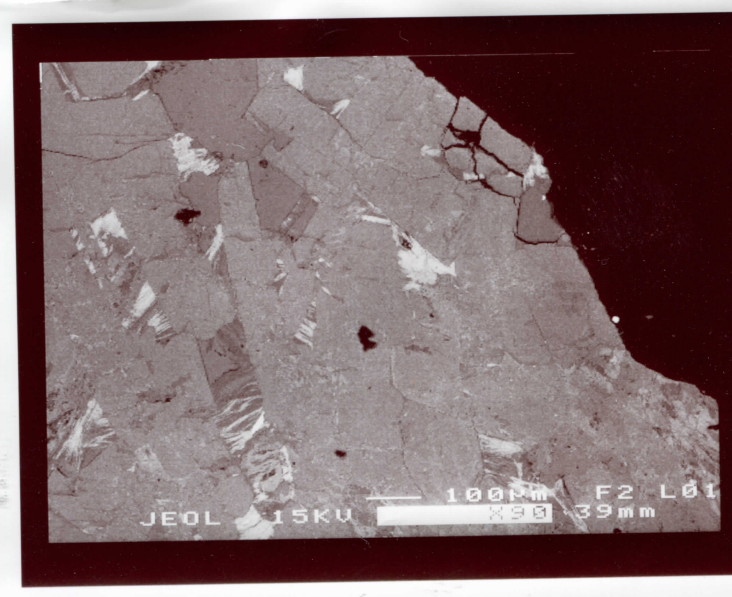
5324.9



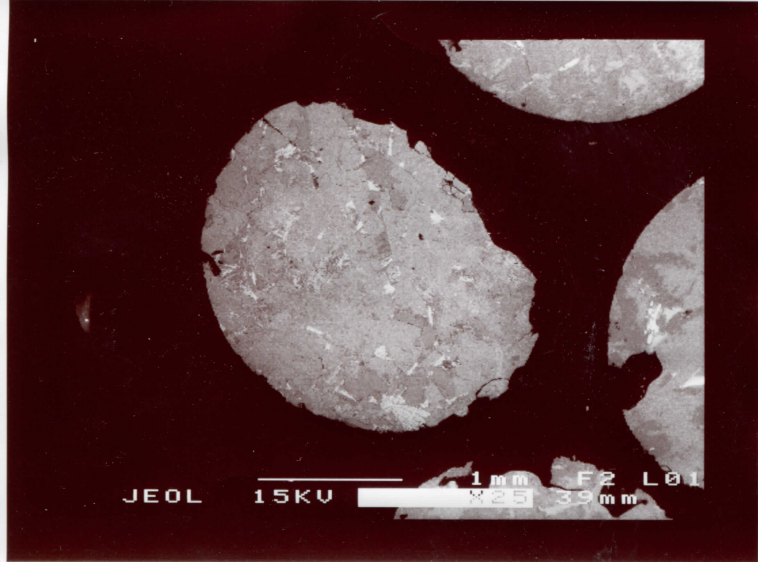
5324.9



7.



7

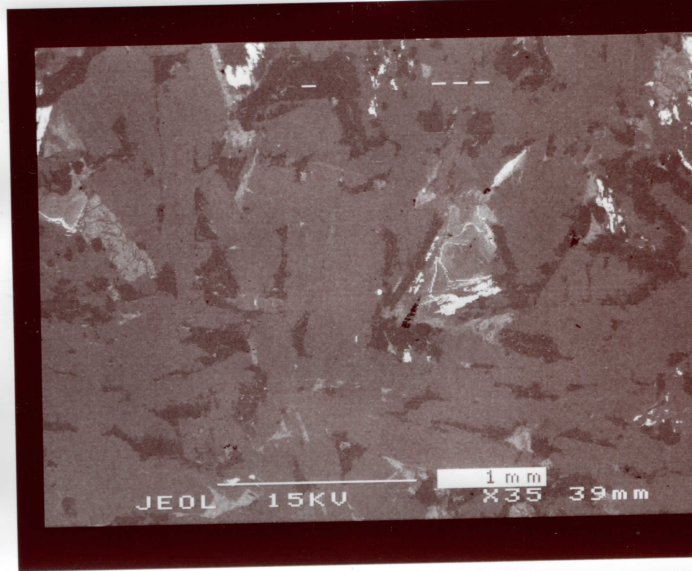


7

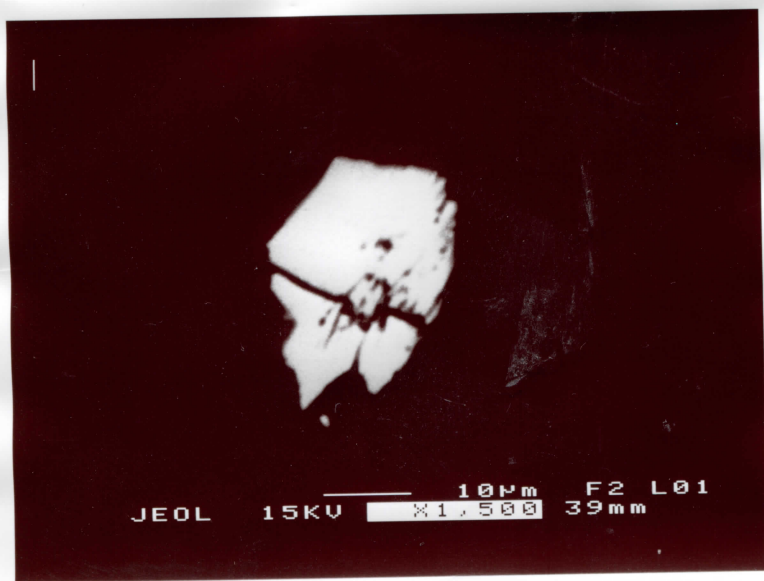




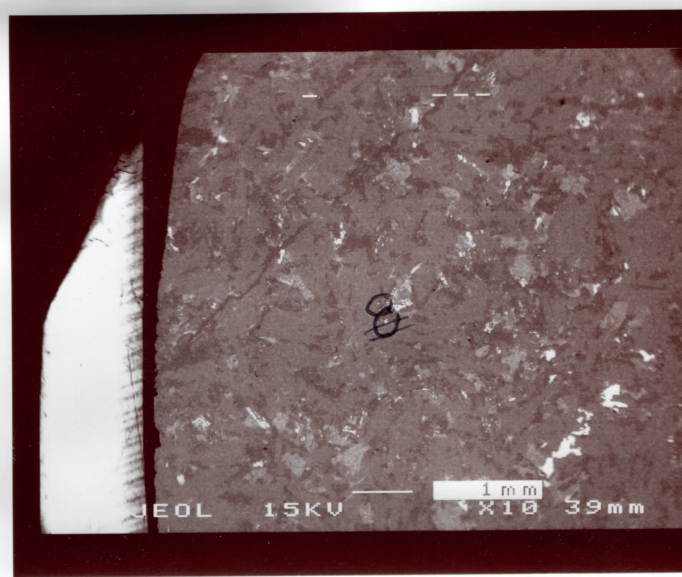
5327. ~~6~~ ⑧ Rad



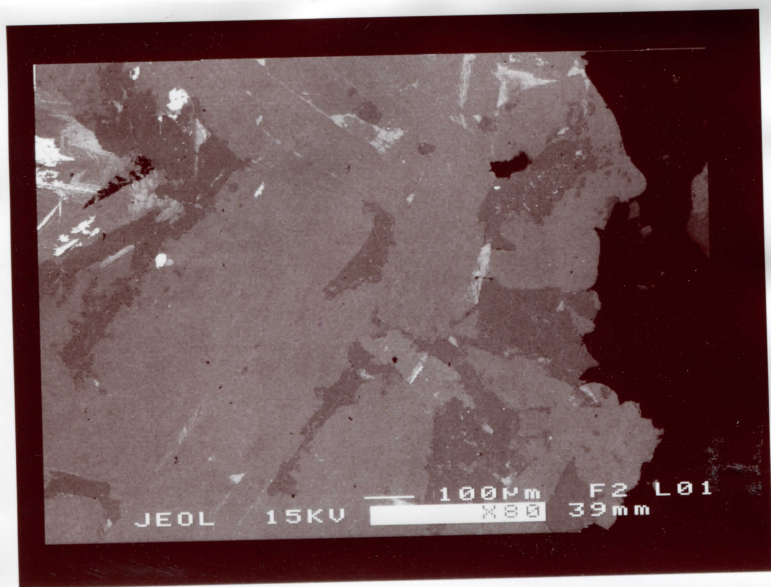
5327.6



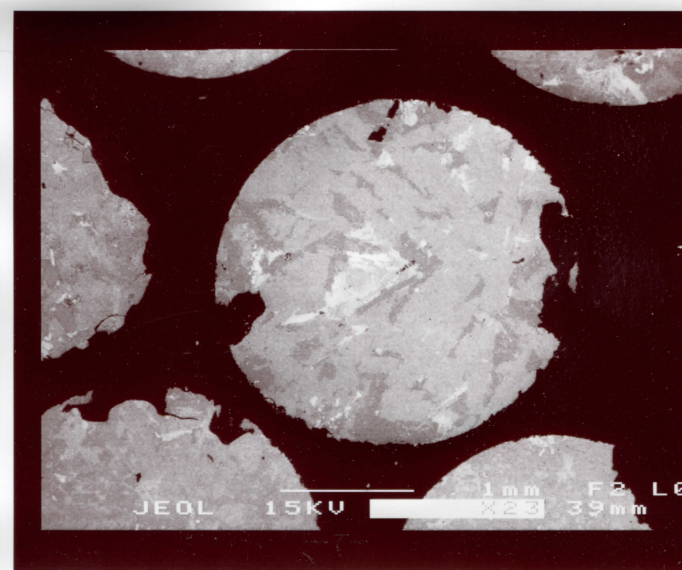
8



5327.6



8



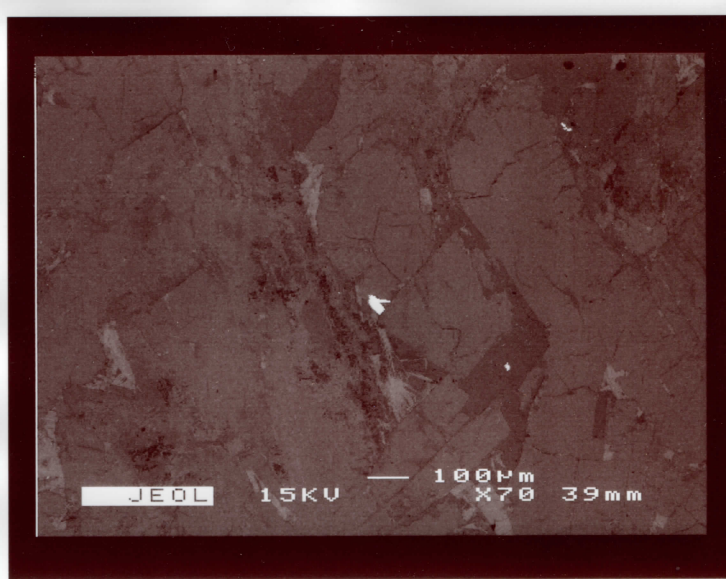
8



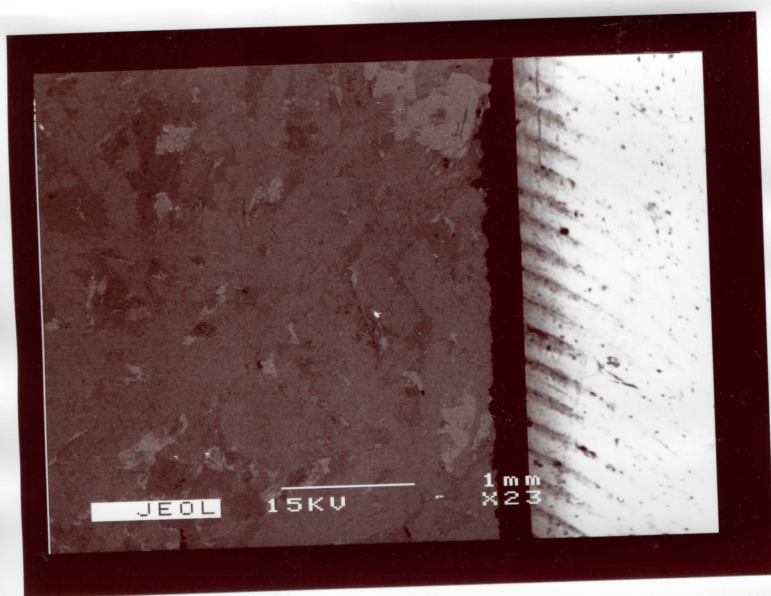


5324. 11

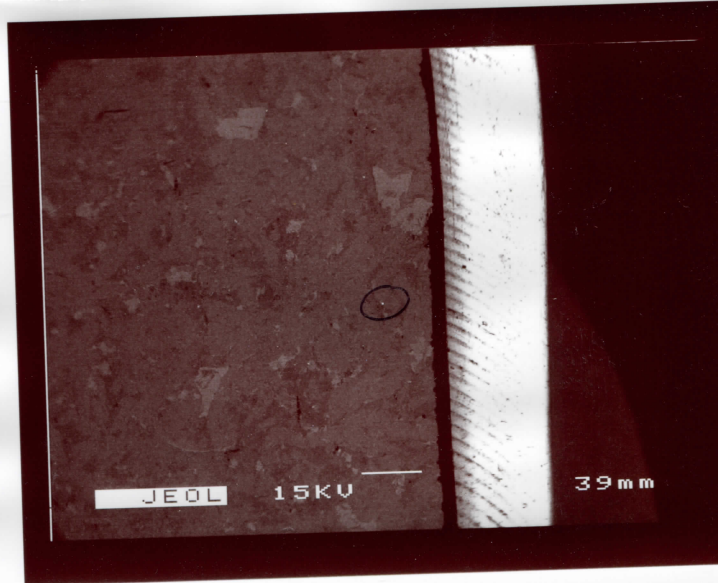
9



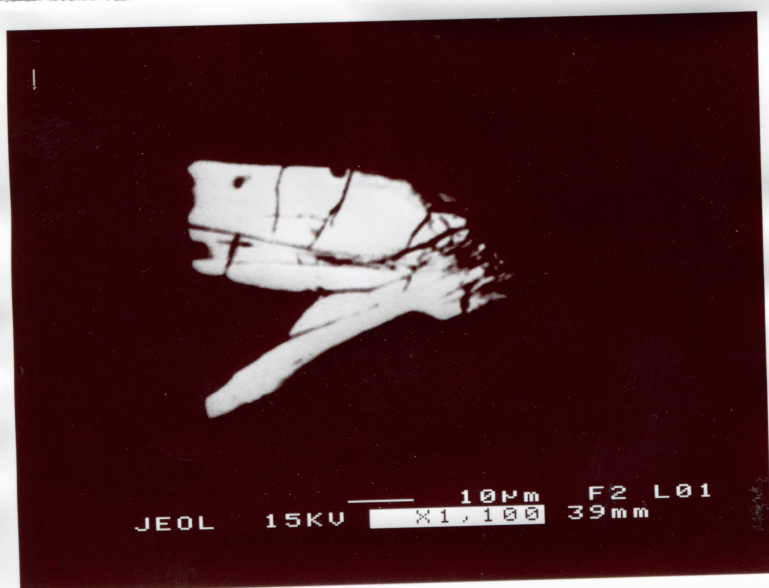
5324. 11



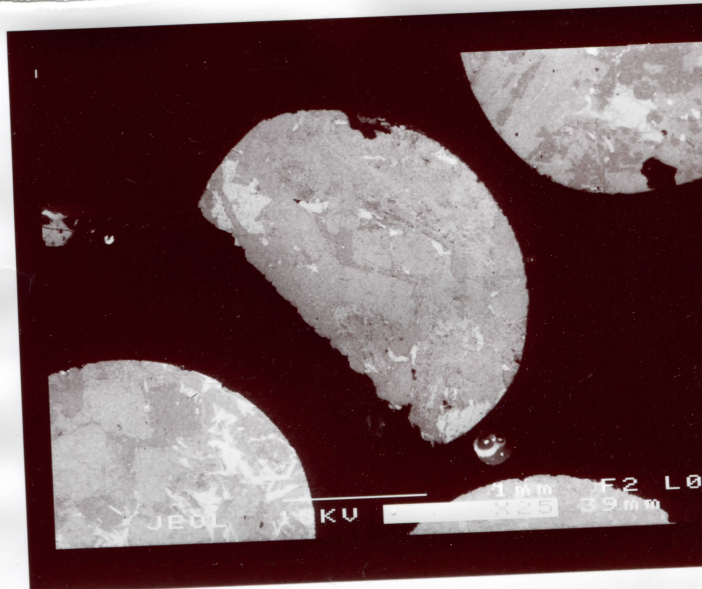
5324. 11



5324. 11

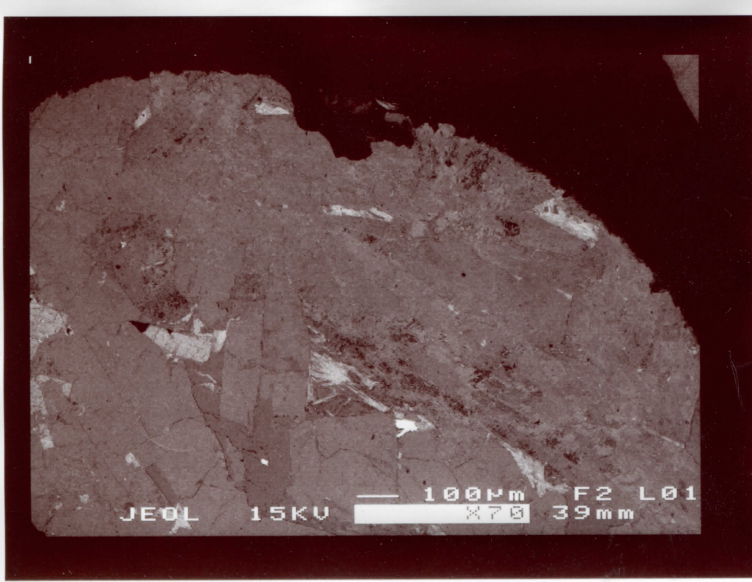


9

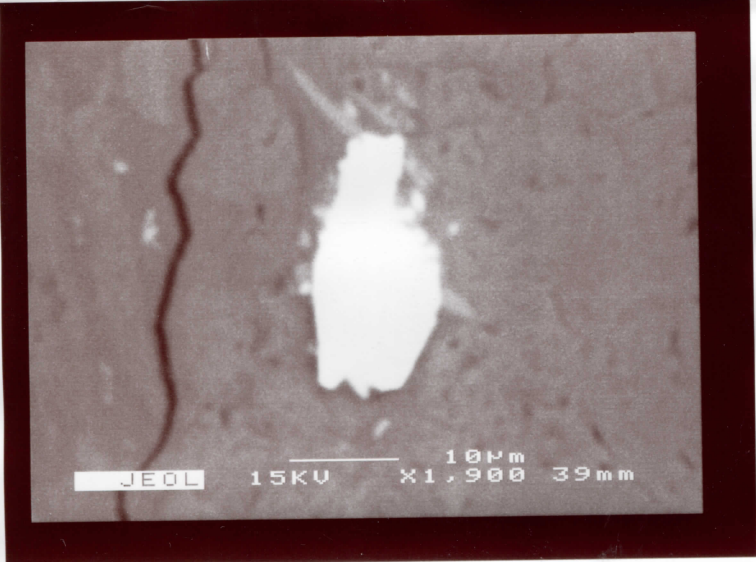


9





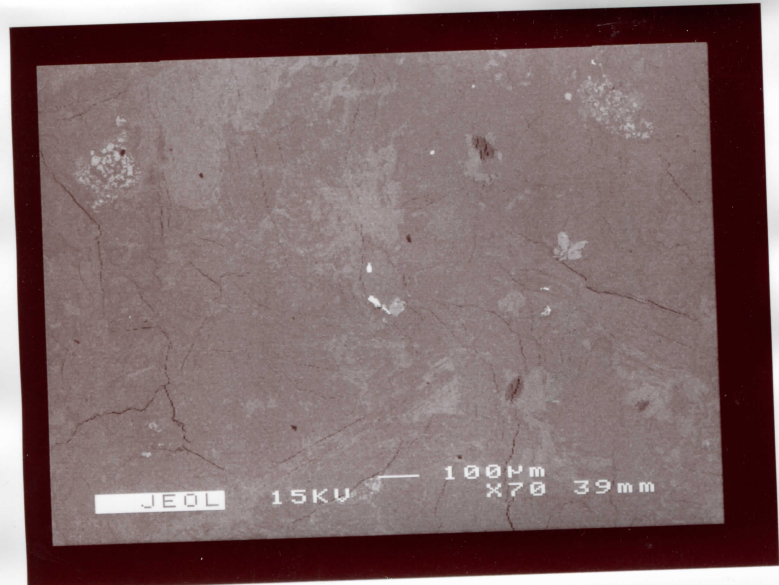
9



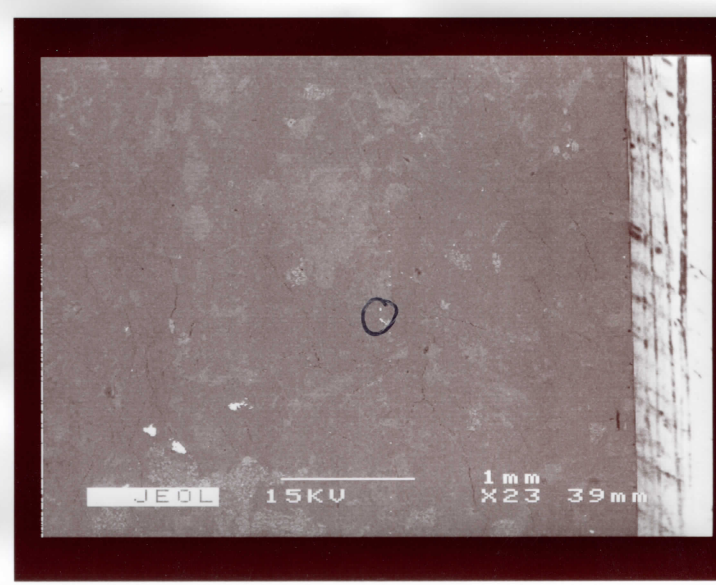
tp8



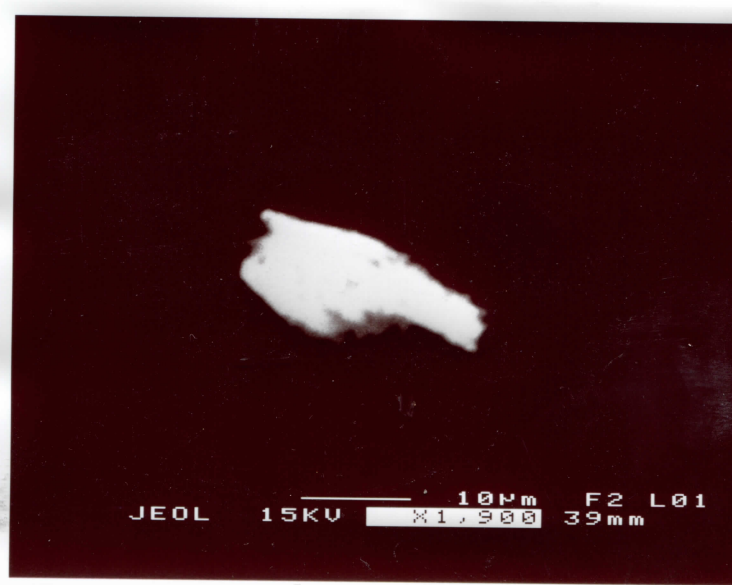
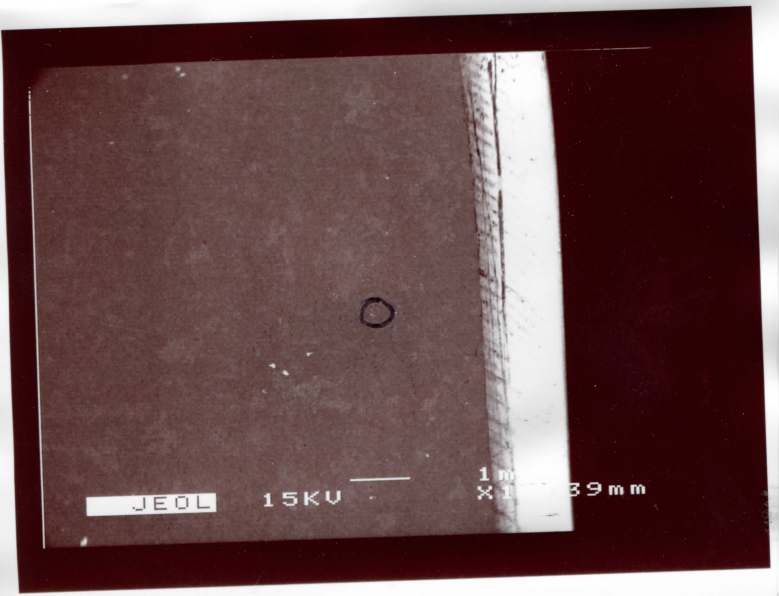
tp7



tp7 +8

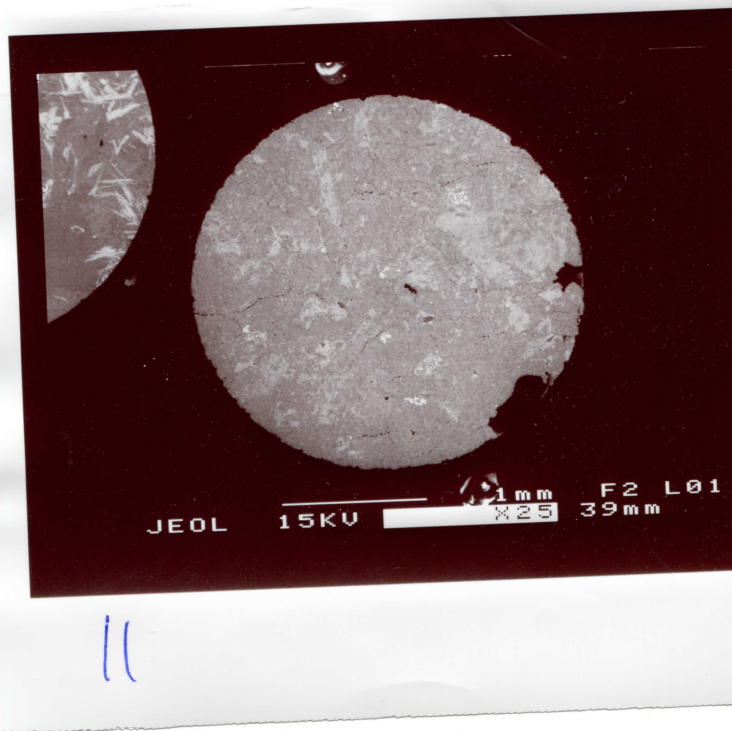
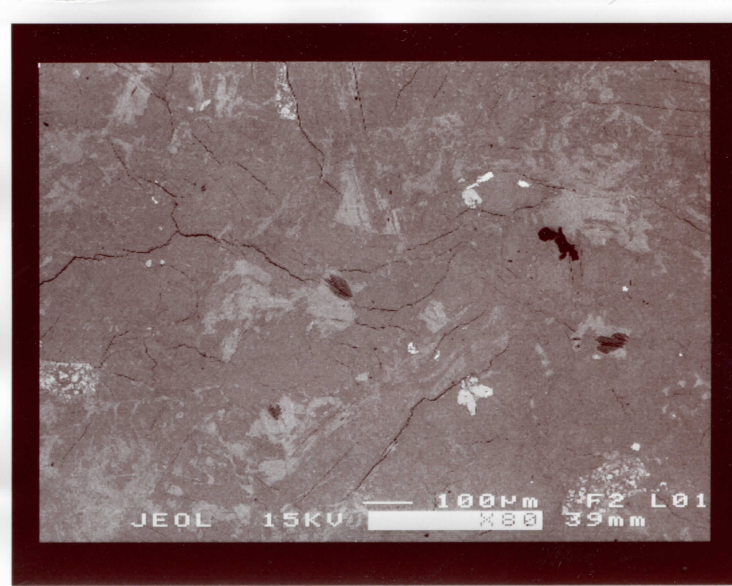
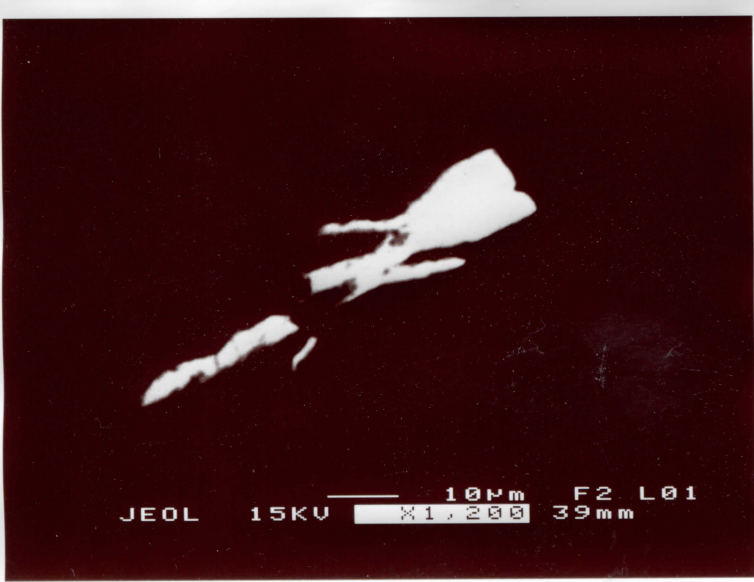


tp7 +8

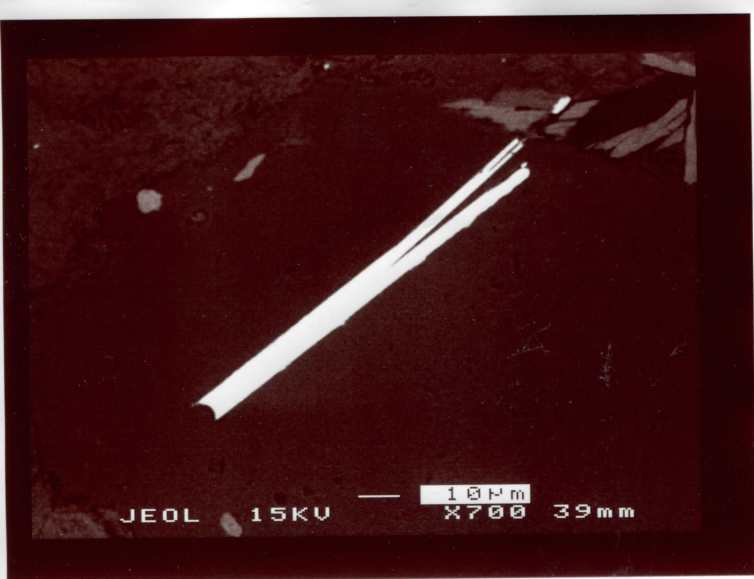


||

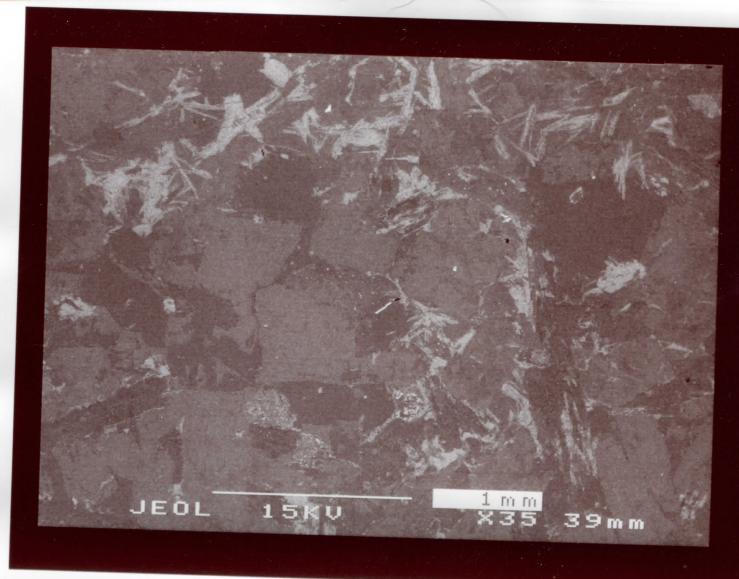




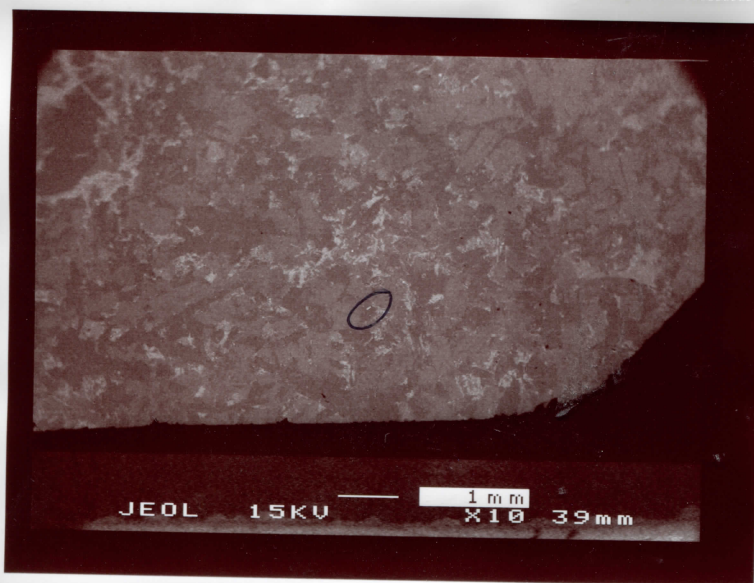




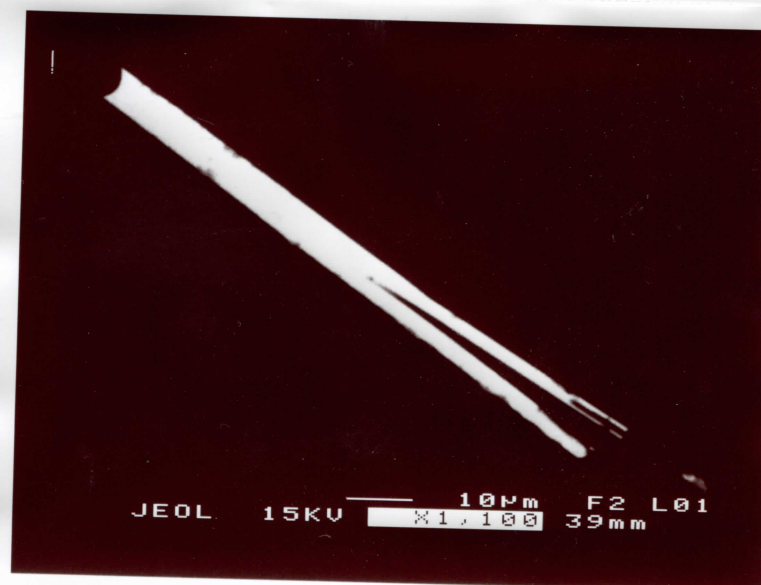
4812 (15.) Bad



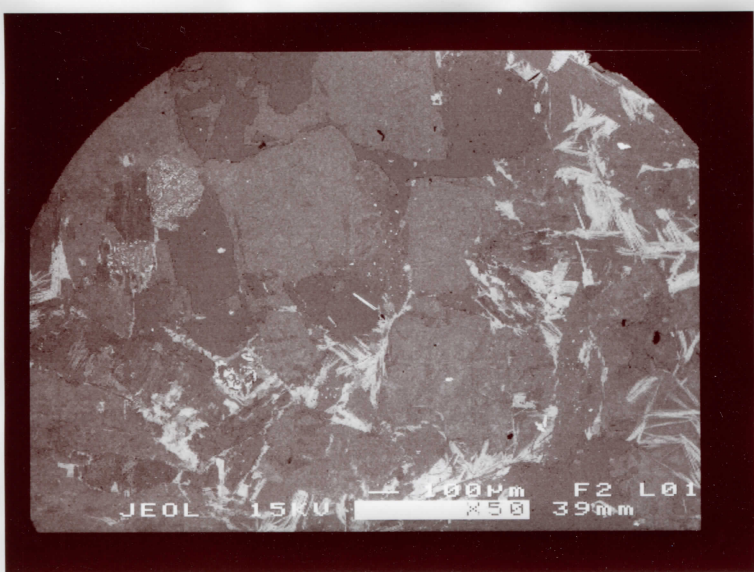
4812 (15.)



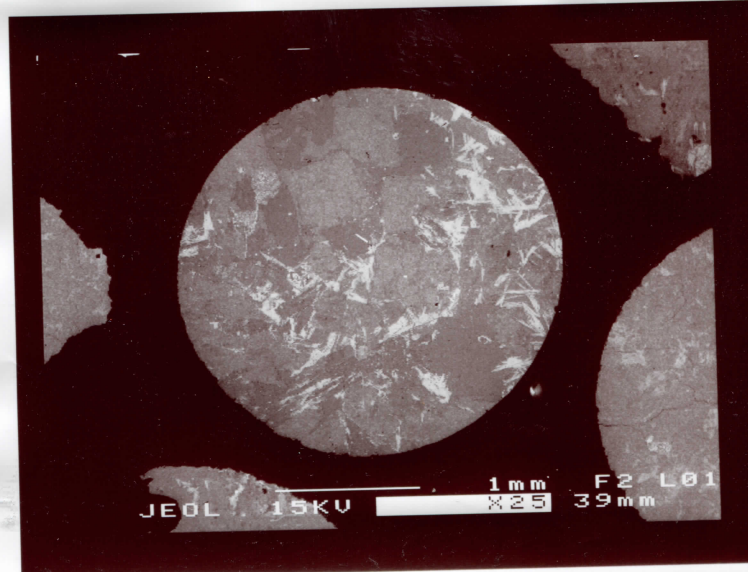
4812 (15.)



12



12

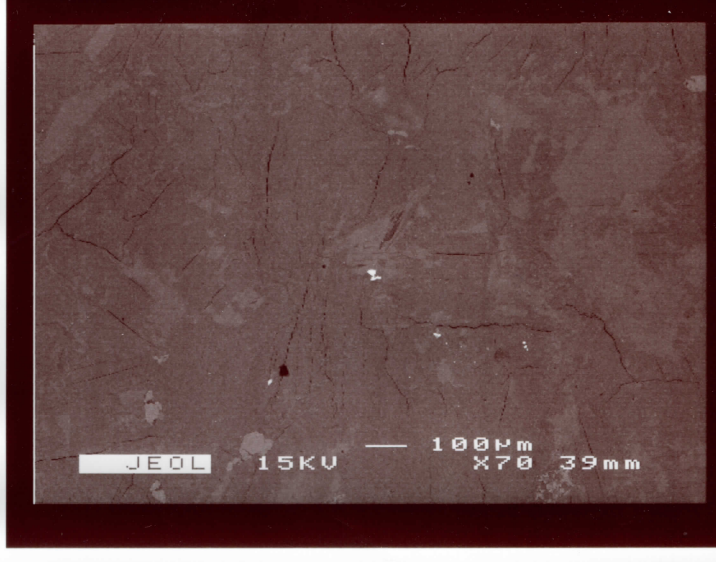


12

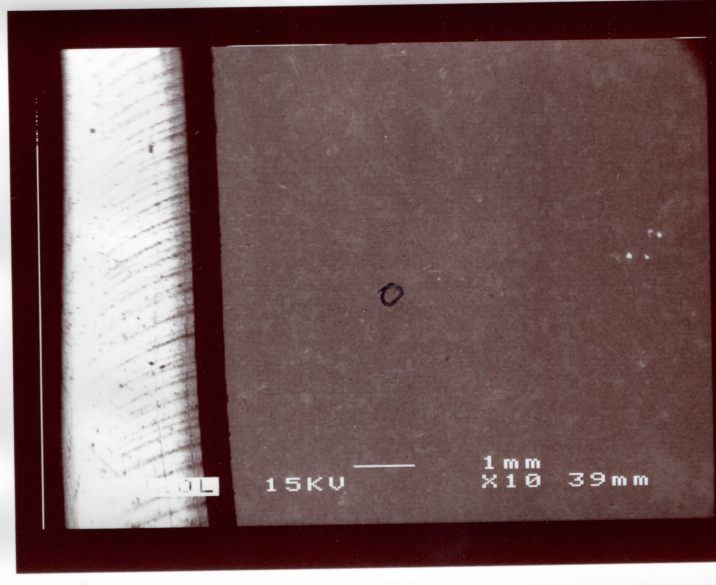
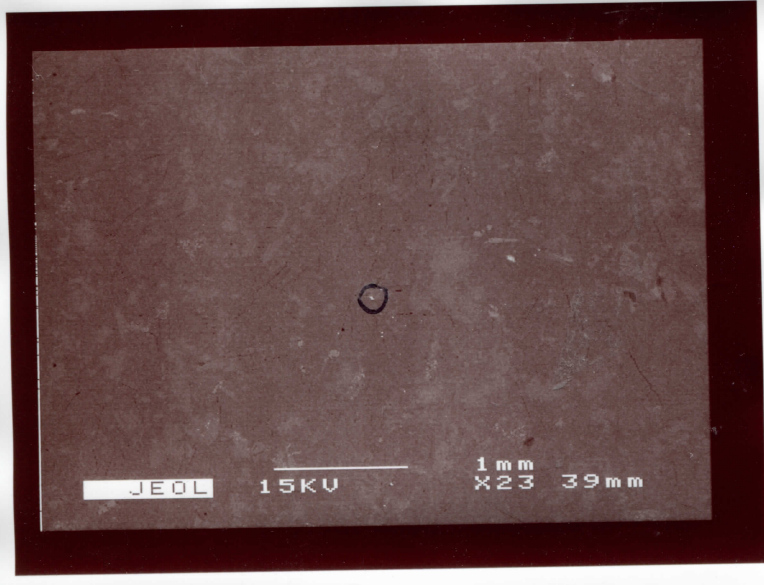




tp3



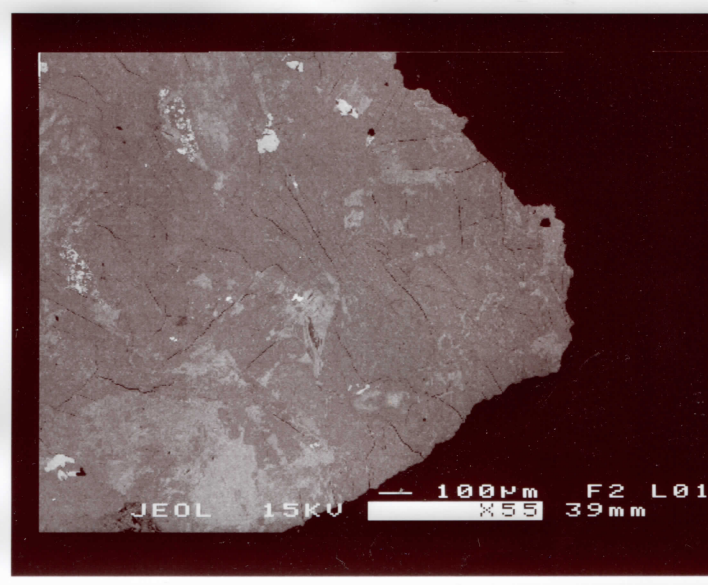
tp3



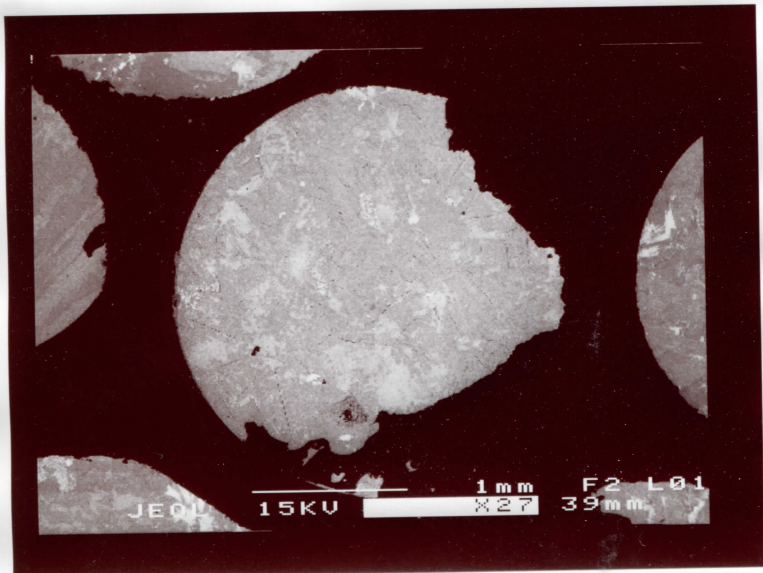
tp3



13



13



13

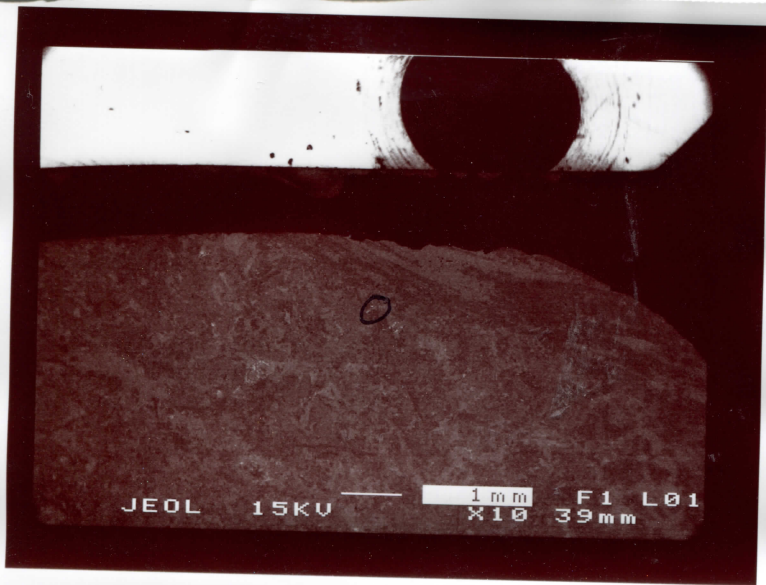




433 (14) 1.) Bad



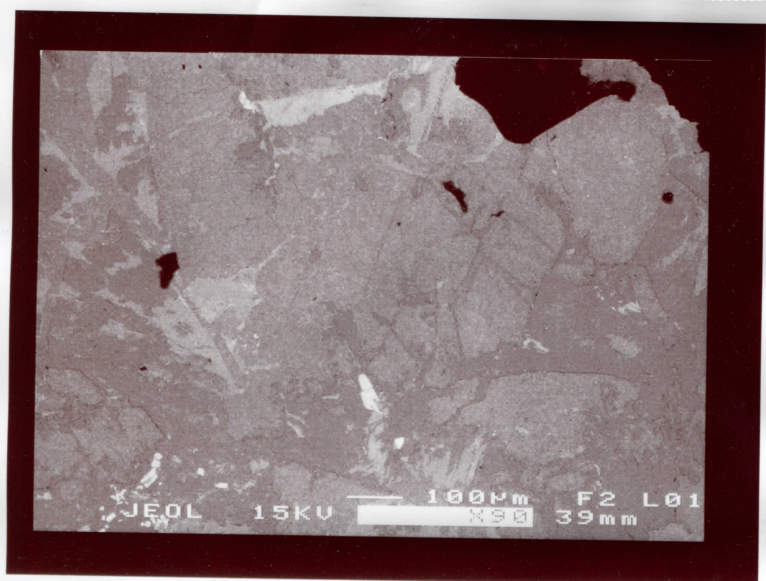
433 1.)



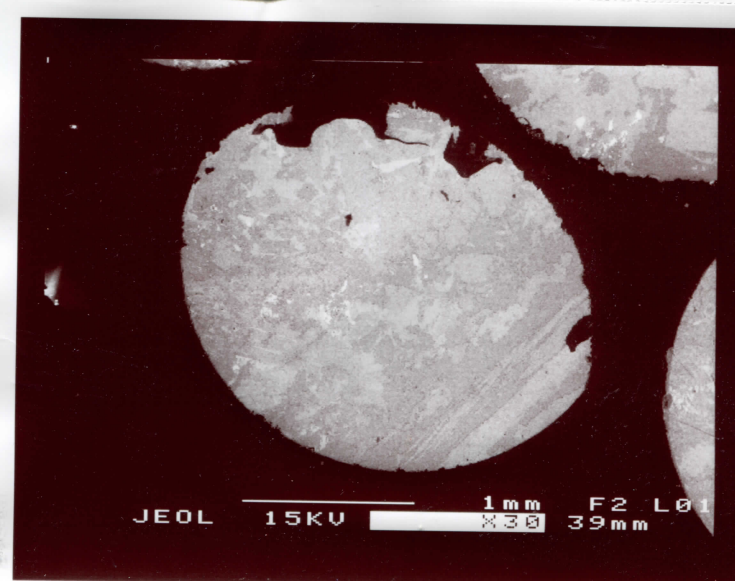
433 1.)



14

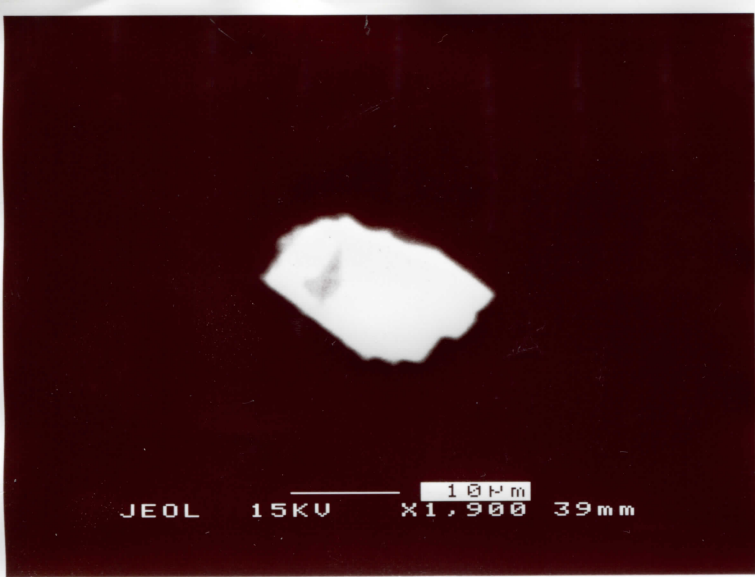


14

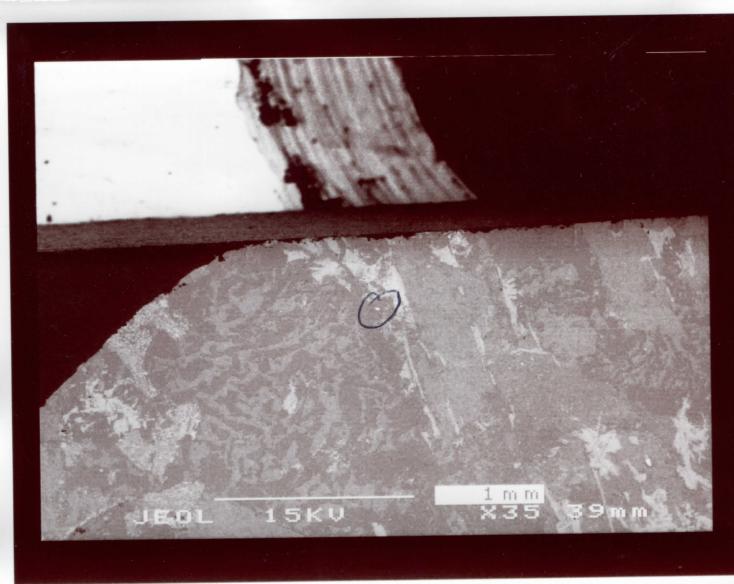


14

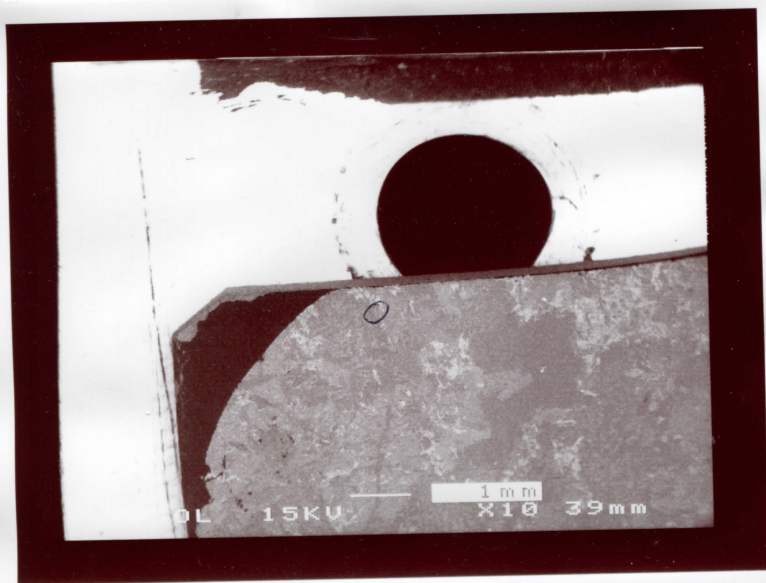




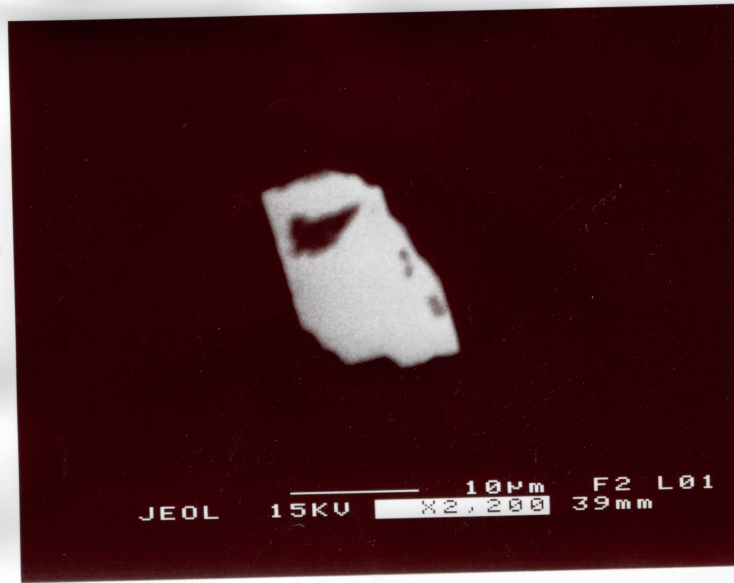
48102 2.) Bad (Ment)



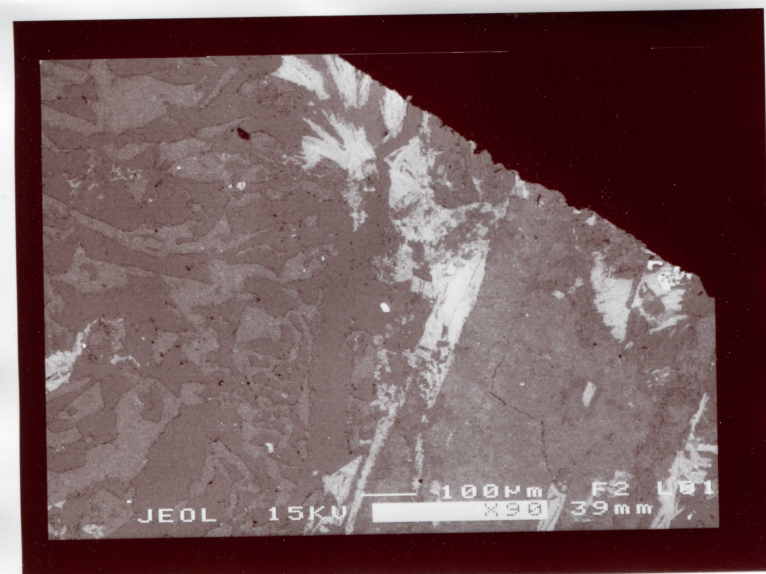
48102 2.)



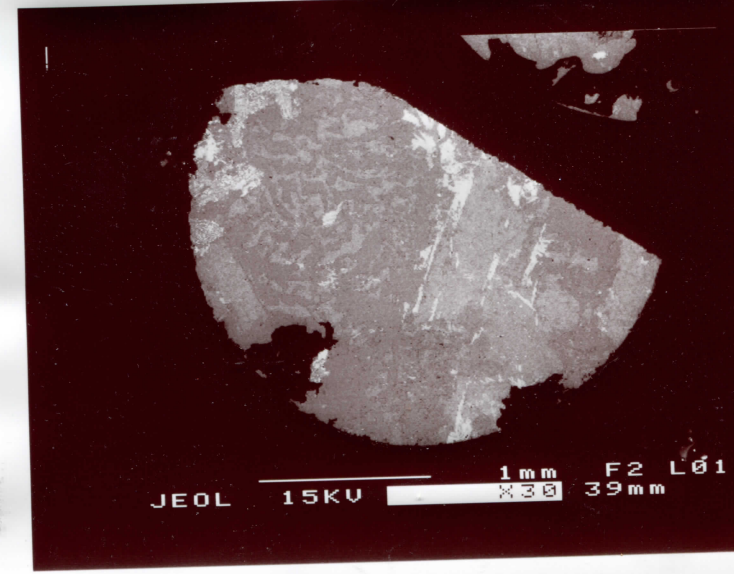
48102 2.)



15 15

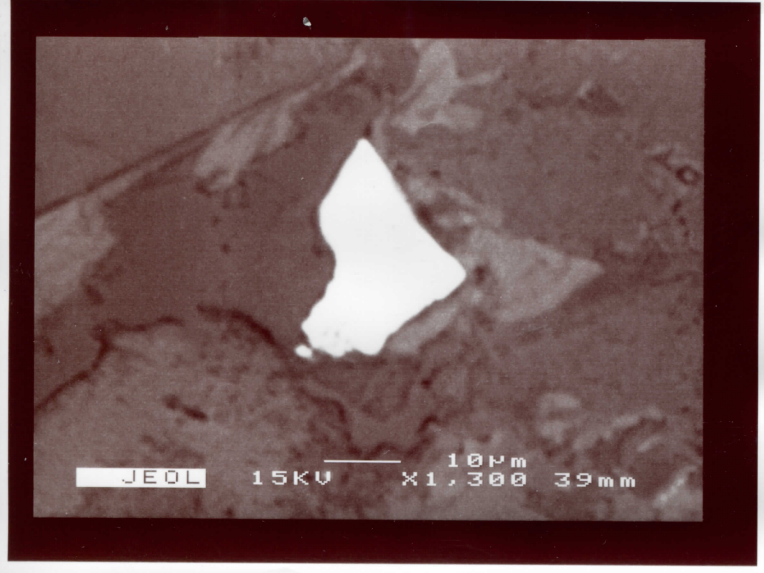


15



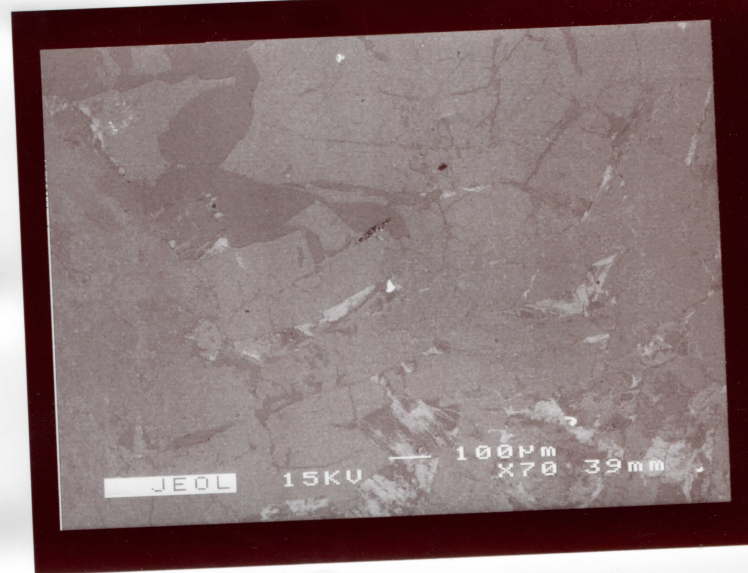
15





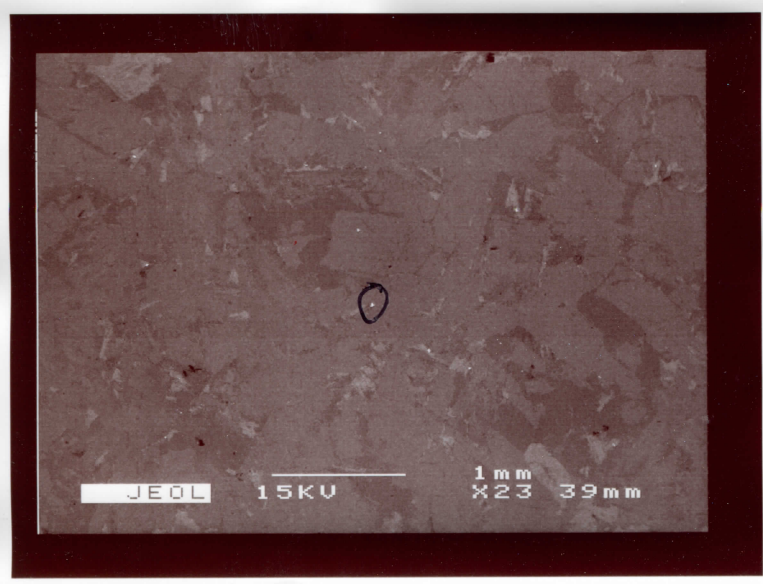
5324.4

16



5324.4

16



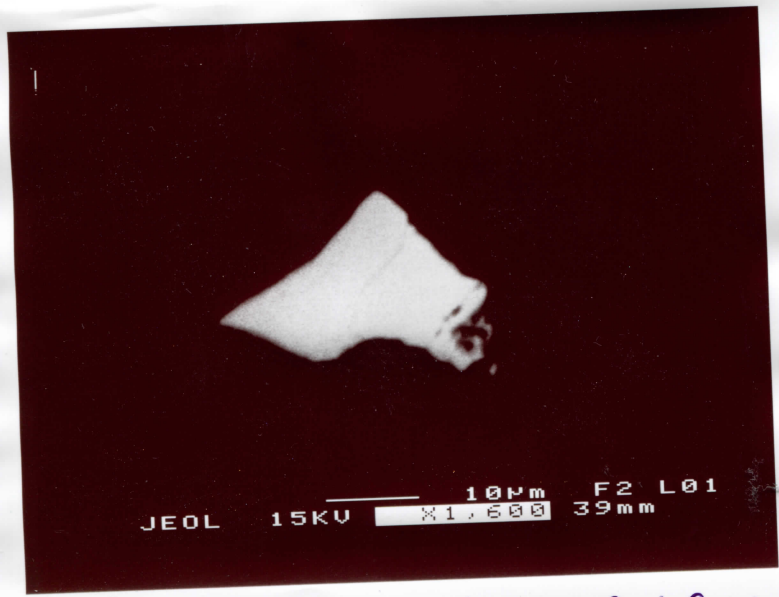
5324.4

0

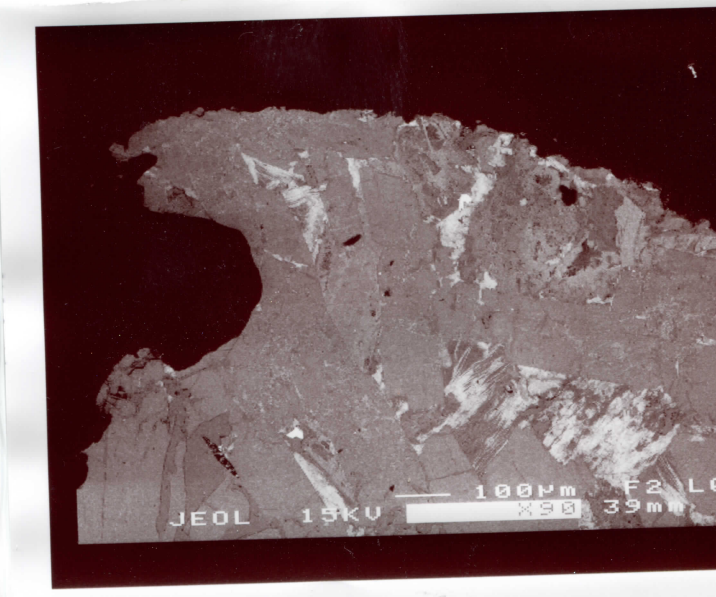


5324.4

0

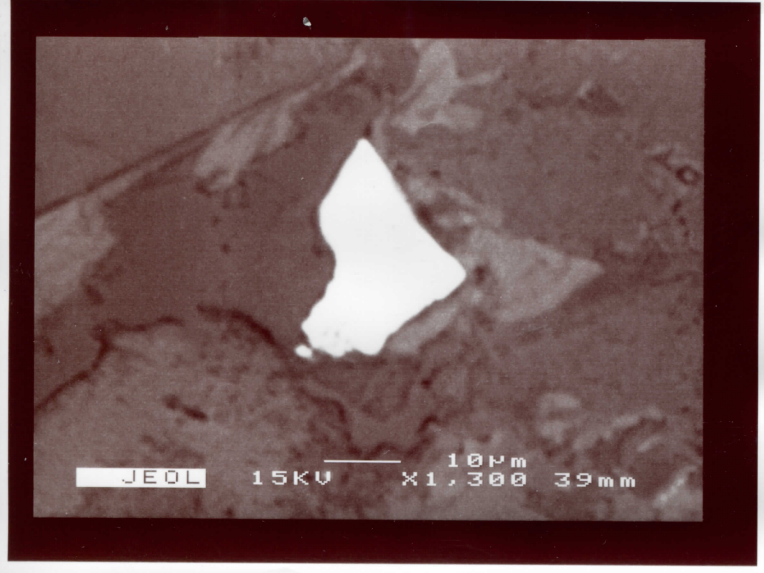


16 16 16 16 16 16 16



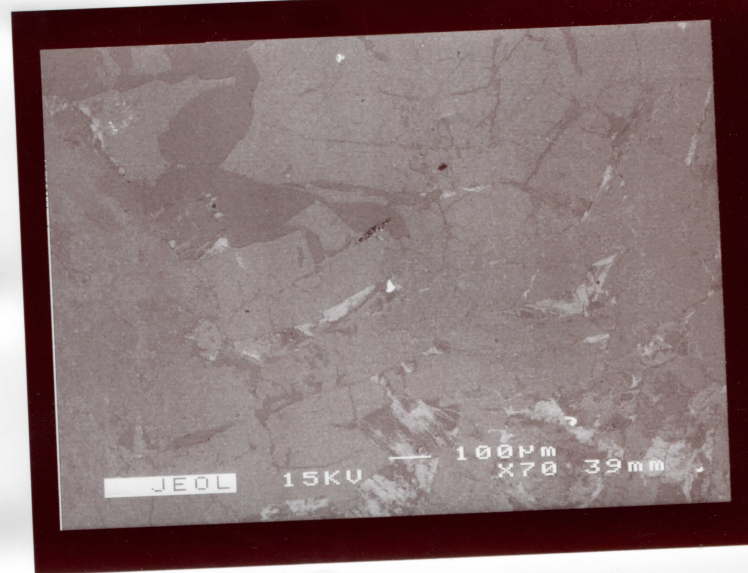
16





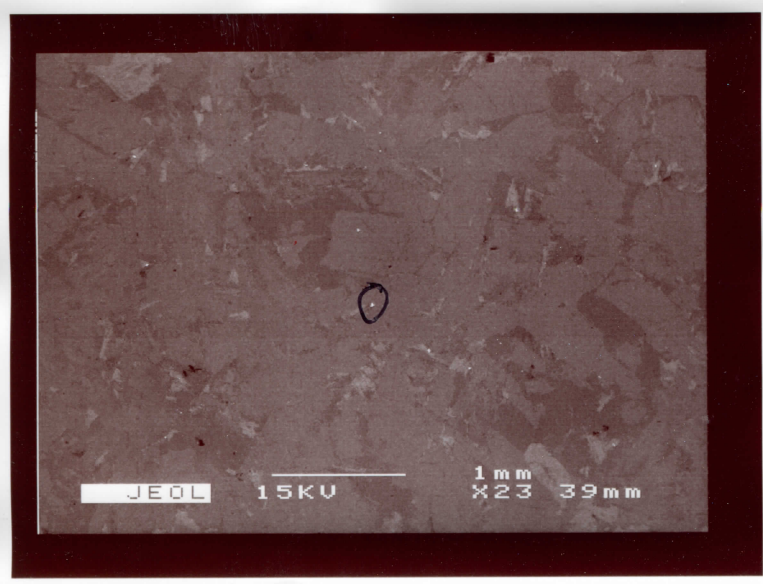
5324.4

16



5324.4

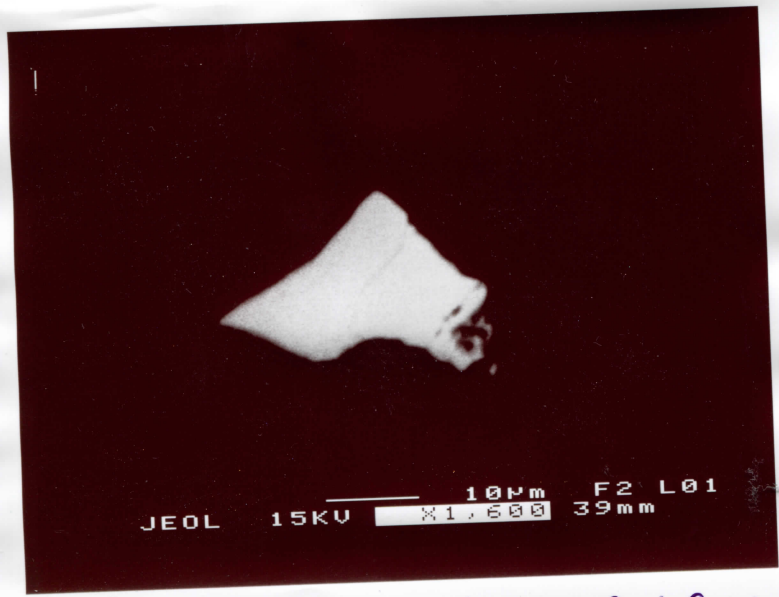
16



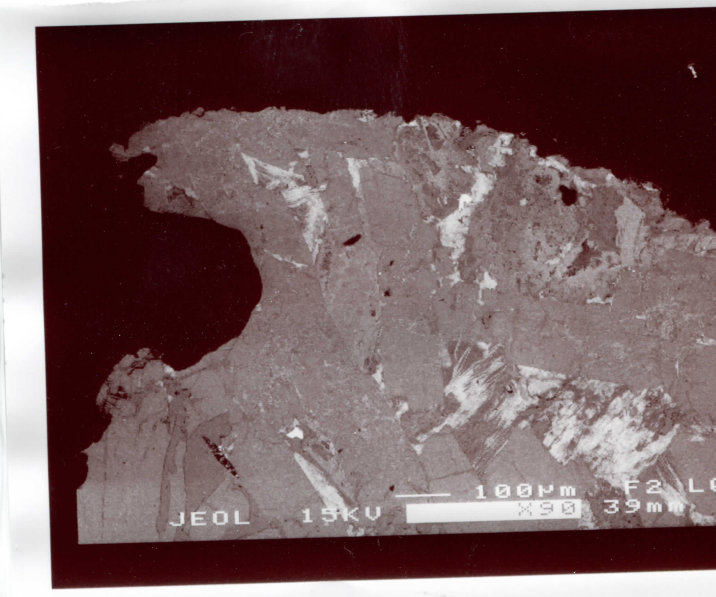
5324.4



5324.4

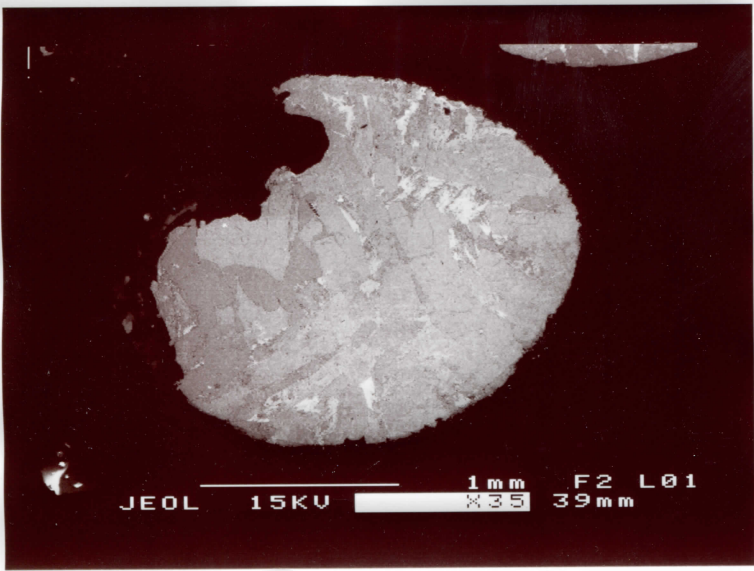


16 16 16 16 16 16 16

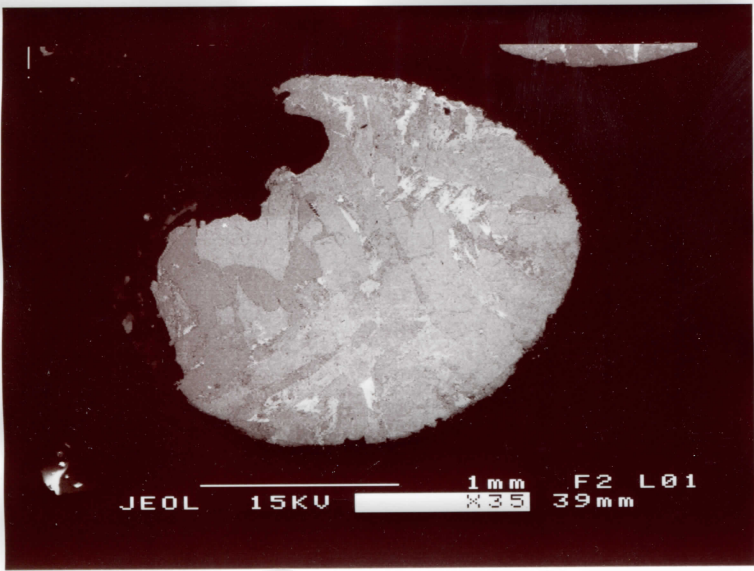


16





16



16