

**SUPRA 55VP**

Serial No. = LEO SUPRA 55VP-23-02

10µm



WD = 19 mm

Detector = QBSD

EHT = 25.00 kV

Gun Vacuum = 7.21e-010 Torr

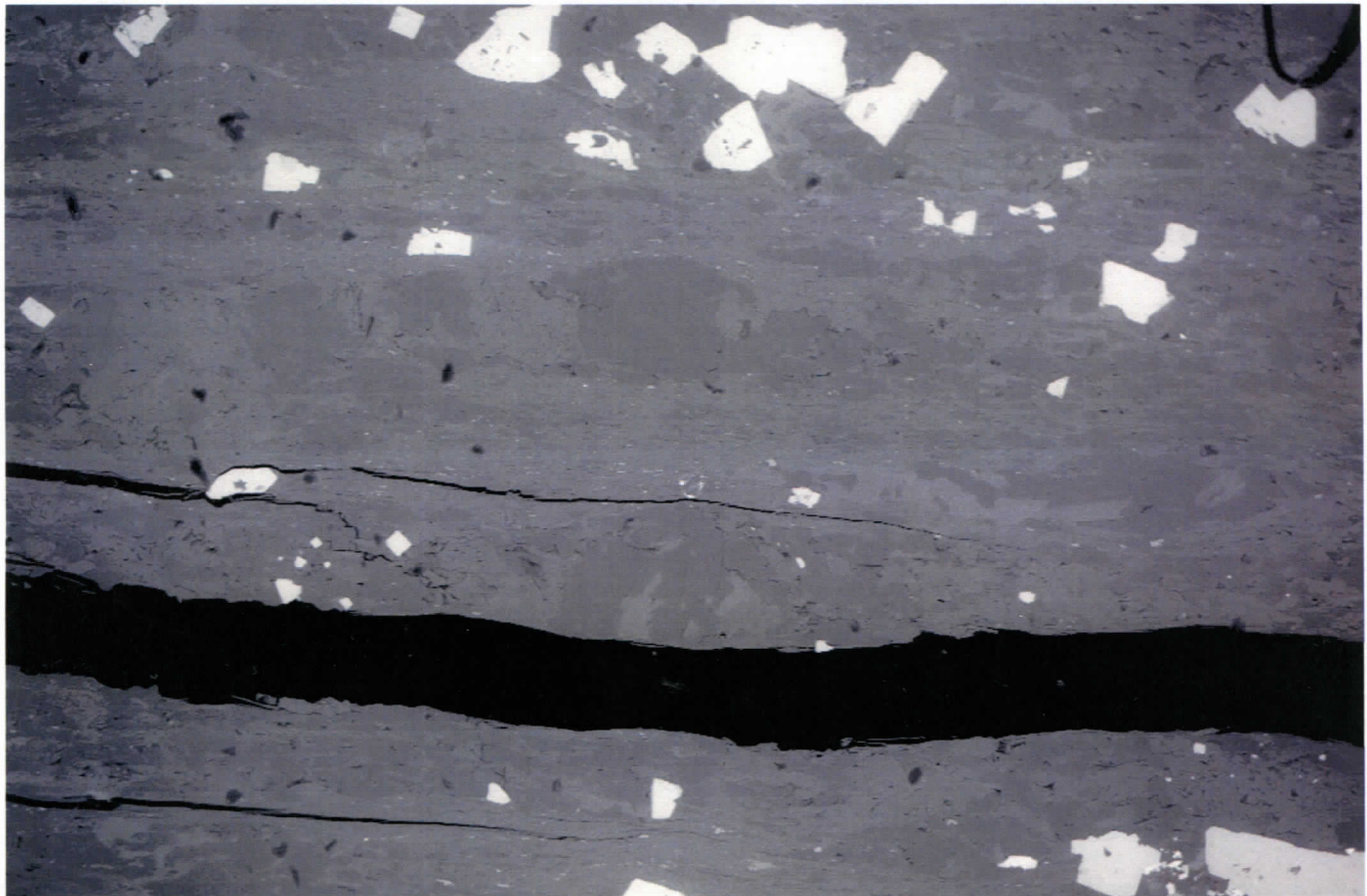
Filament Age = 1392.28 Hours

Date : 20 Dec 2003 Time : 16:24:22

Mag = 1.38 K X

Noise Reduction = Line Avg

Scan Speed = 5



**SUPRA 55VP**

Serial No. = LEO SUPRA 55VP-23-02

100µm



WD = 19 mm

Detector = QBSD

EHT = 25.00 kV

Gun Vacuum = 7.27e-010 Torr

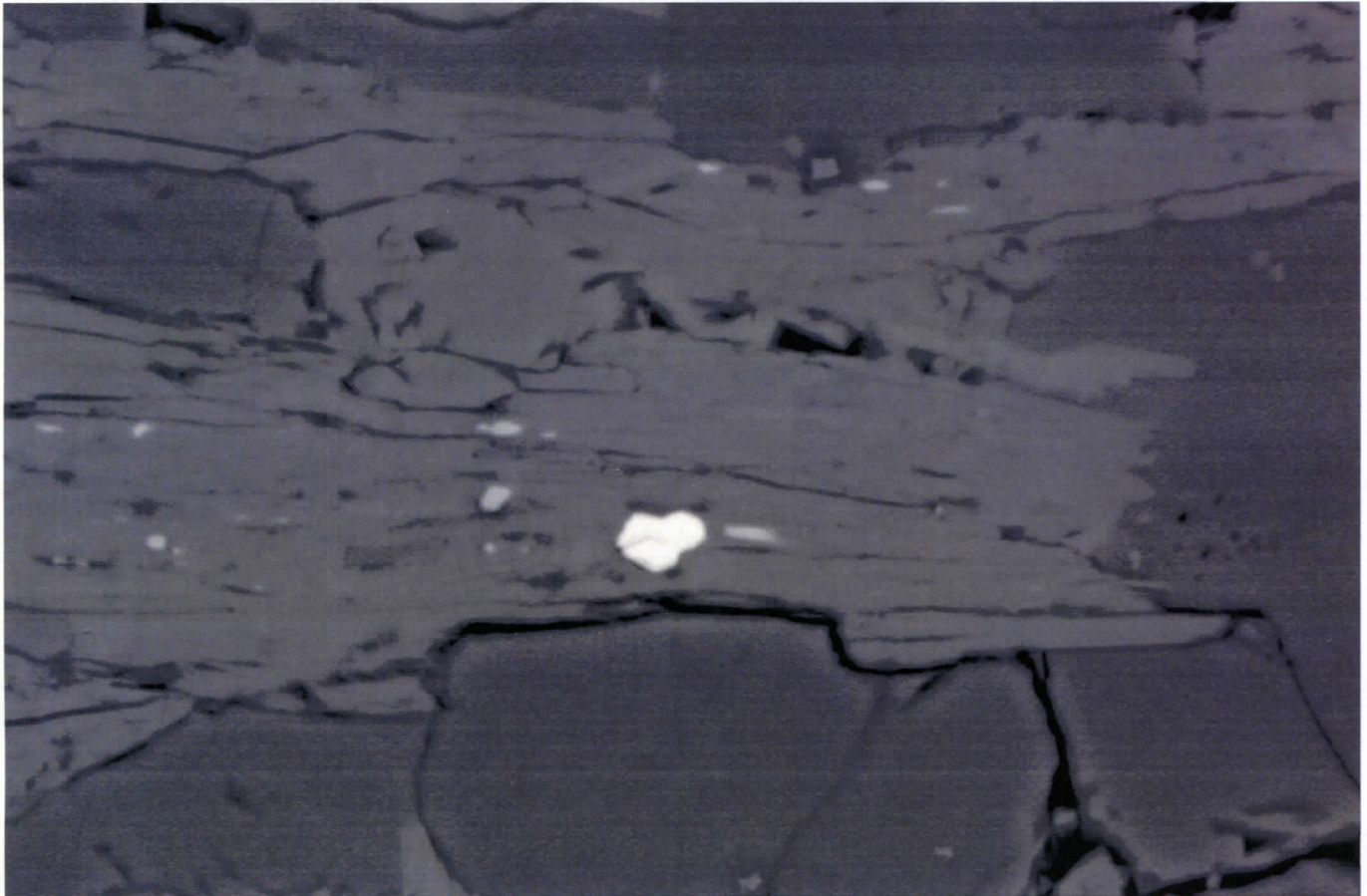
Filament Age = 1392.30 Hours

Date : 20 Dec 2003 Time : 16:26:17

Mag = 152 X

Noise Reduction = Line Avg

Scan Speed = 5



**SUPRA 55VP**

Serial No. = LEO SUPRA 55VP-23-02

10µm



WD = 19 mm

Detector = QBSD

EHT = 25.00 kV

Gun Vacuum = 7.27e-010 Torr

Filament Age = 1392.15 Hours

Date : 20 Dec 2003 Time : 16:17:18

Mag = 2.52 K X

Noise Reduction = Line Avg

Scan Speed = 5



**SUPRA 55VP**

Serial No. = LEO SUPRA 55VP-23-02

20µm



WD = 19 mm

Detector = QBSD

EHT = 25.00 kV

Gun Vacuum = 7.21e-010 Torr

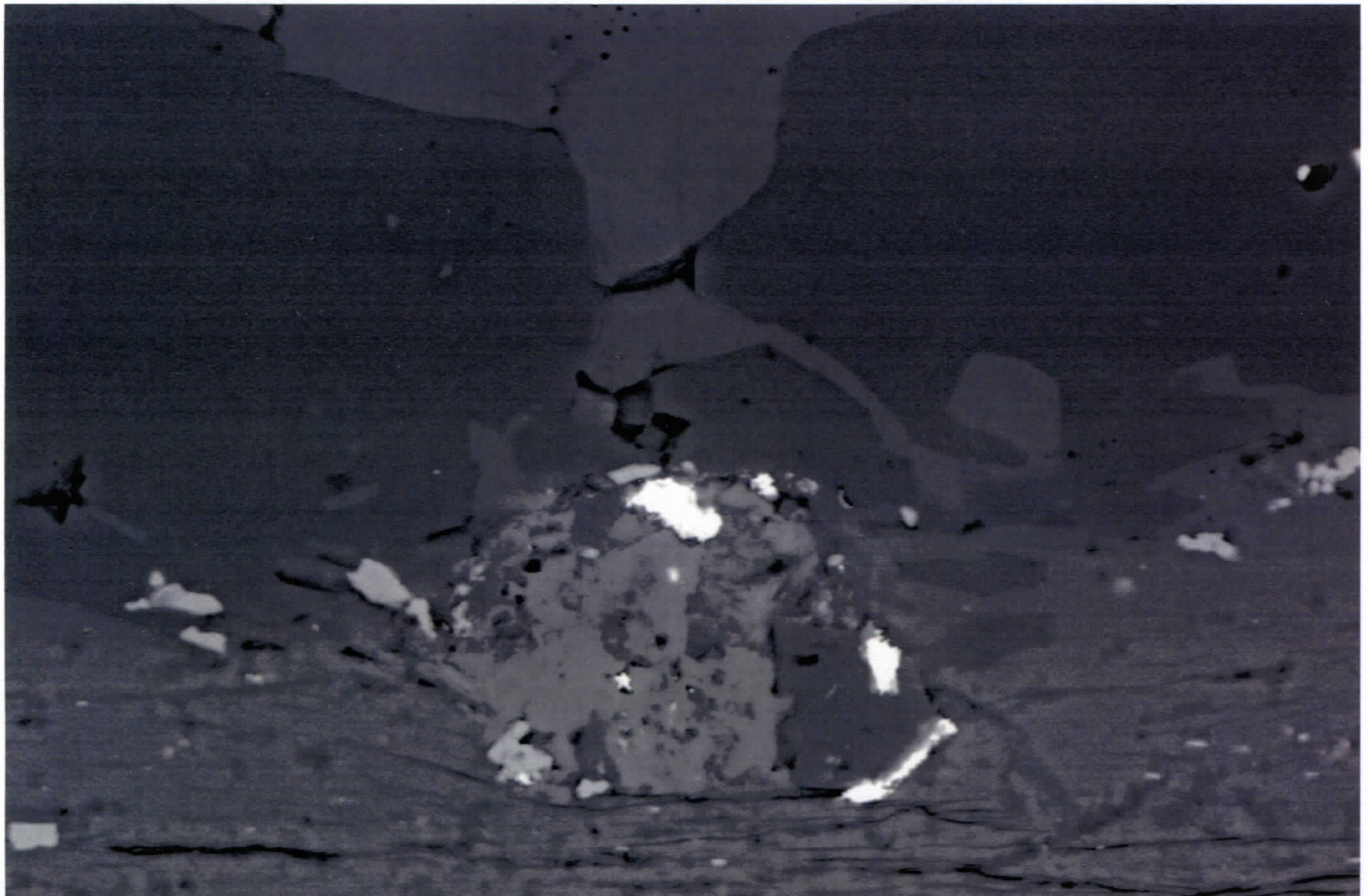
Filament Age = 1392.13 Hours

Date : 20 Dec 2003 Time : 16:15:33

Mag = 518 X

Noise Reduction = Line Avg

Scan Speed = 5



**SUPRA 55VP**

Serial No. = LEO SUPRA 55VP-23-02

10µm



WD = 18 mm

Detector = QBSD

EHT = 25.00 kV

Gun Vacuum = 7.07e-010 Torr

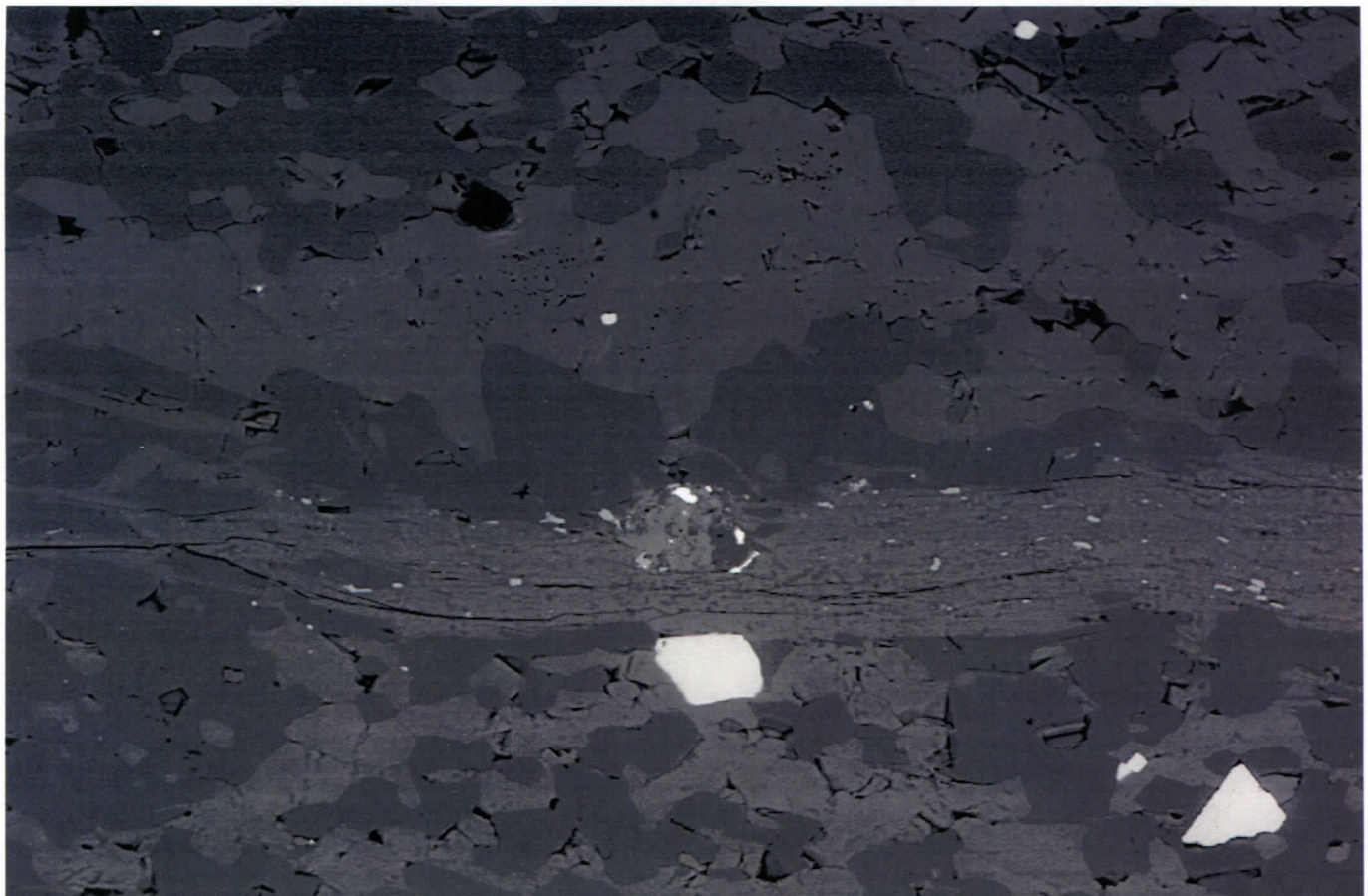
Filament Age = 1456.46 Hours

Date : 23 Dec 2003 Time : 9:27:44

Mag = 1.69 K X

Noise Reduction = Line Avg

Scan Speed = 5



**SUPRA 55VP**

Serial No. = LEO SUPRA 55VP-23-02

20µm



WD = 18 mm

Detector = QBSD

EHT = 25.00 kV

Gun Vacuum = 7.16e-010 Torr

Filament Age = 1456.44 Hours

Date : 23 Dec 2003 Time : 9:26:12

Mag = 446 X

Noise Reduction = Line Avg

Scan Speed = 5



**SUPRA 55VP**

Serial No. = LEO SUPRA 55VP-23-02

10µm

WD = 18 mm

Detector = QBSD

EHT = 25.00 kV

Gun Vacuum = 7.18e-010 Torr

Filament Age = 1456.66 Hours

Date :23 Dec 2003 Time :9:39:38

Mag = 1.78 K X

Noise Reduction = Line Avg

Scan Speed = 5



**SUPRA 55VP**

Serial No. = LEO SUPRA 55VP-23-02

100µm

WD = 18 mm

Detector = QBSD

EHT = 25.00 kV

Gun Vacuum = 7.09e-010 Torr

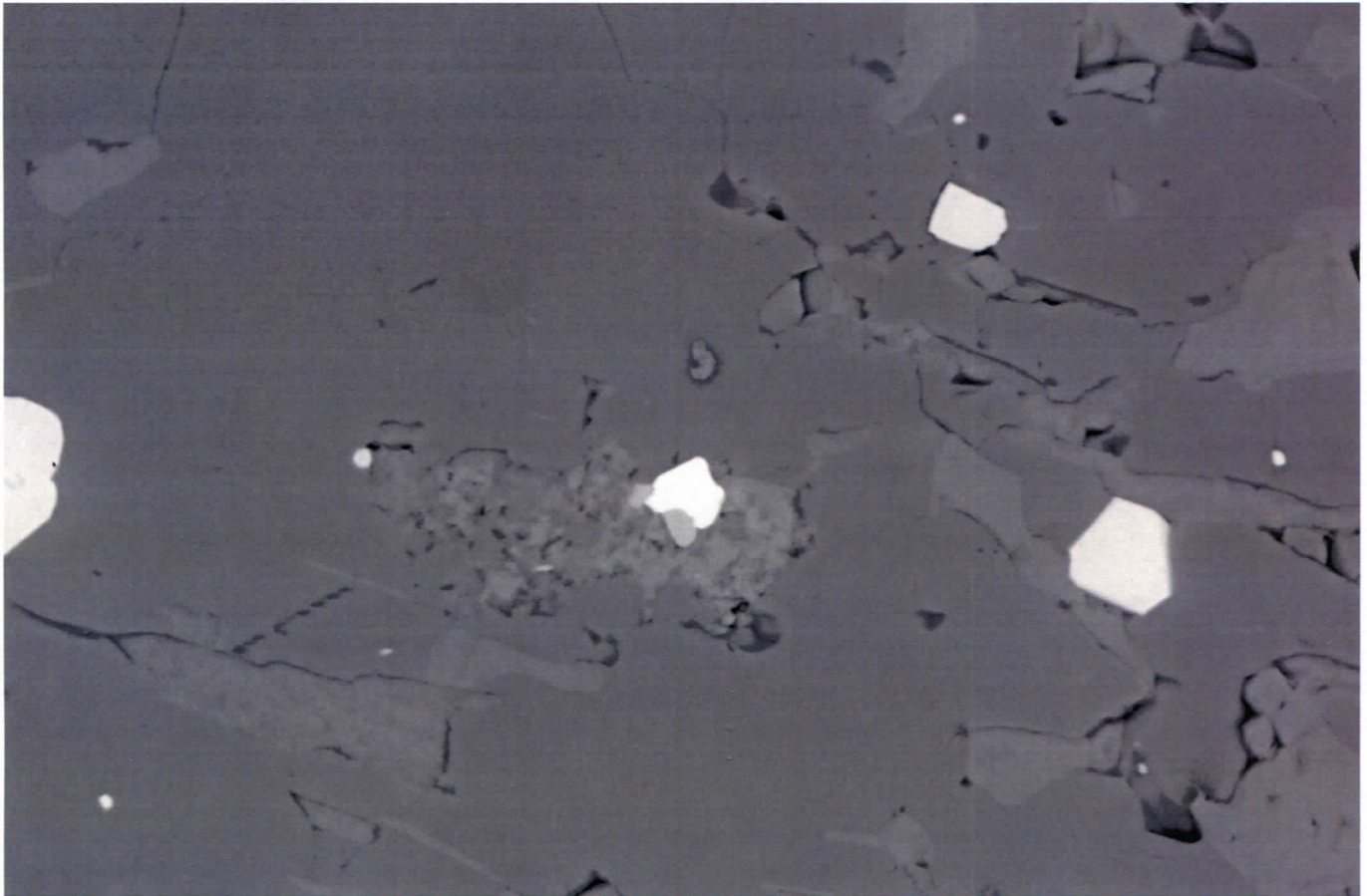
Filament Age = 1456.64 Hours

Date :23 Dec 2003 Time :9:38:08

Mag = 282 X

Noise Reduction = Line Avg

Scan Speed = 5



**SUPRA 55VP**

Serial No. = LEO SUPRA 55VP-23-02

20µm



WD = 18 mm

Detector = QBSD

EHT = 25.00 kV

Gun Vacuum = 7.28e-010 Torr

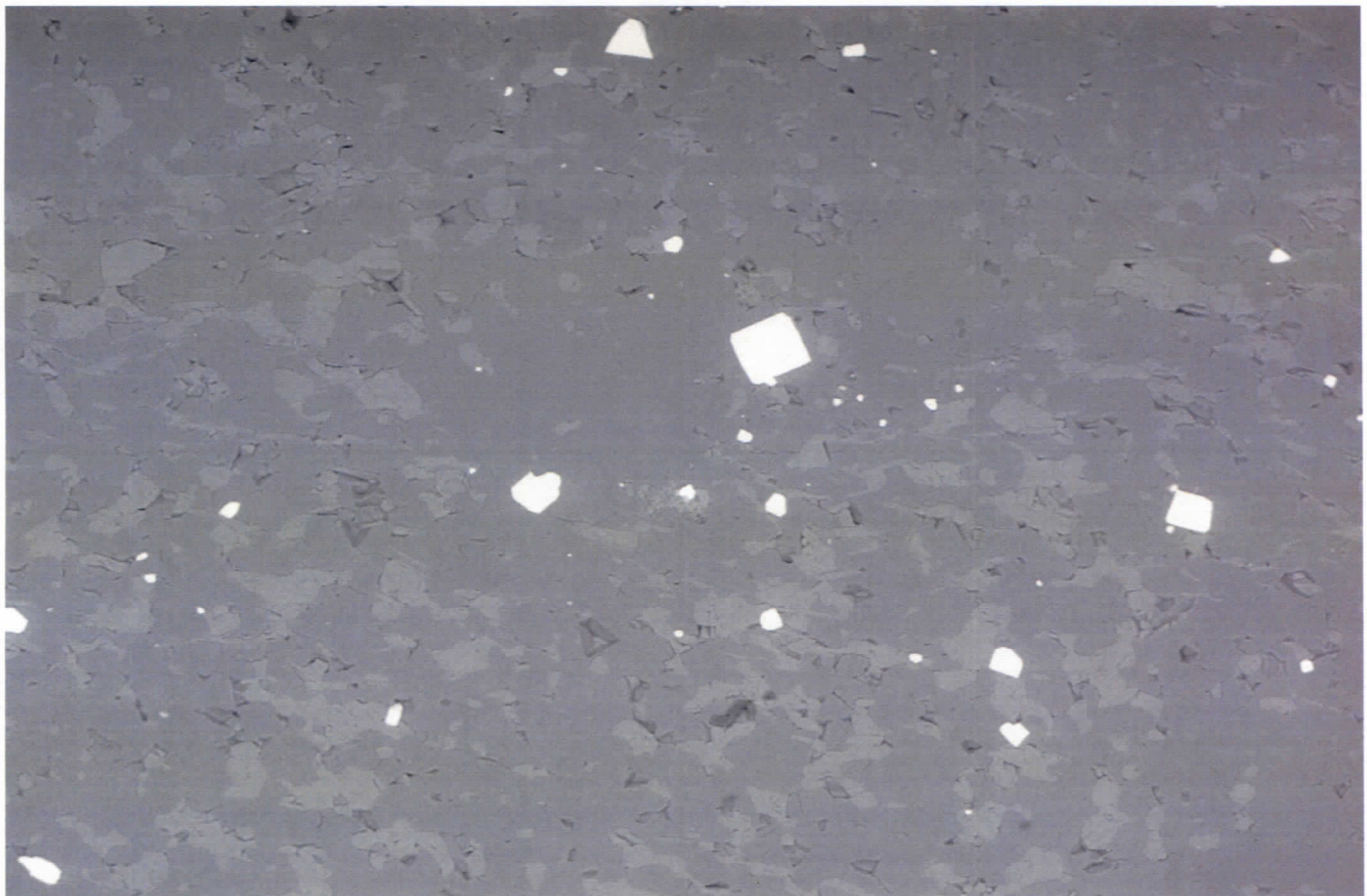
Filament Age = 1457.85 Hours

Date : 23 Dec 2003 Time : 10:50:29

Mag = 1.28 K X

Noise Reduction = Line Avg

Scan Speed = 5



**SUPRA 55VP**

Serial No. = LEO SUPRA 55VP-23-02

100µm



WD = 18 mm

Detector = QBSD

EHT = 25.00 kV

Gun Vacuum = 7.32e-010 Torr

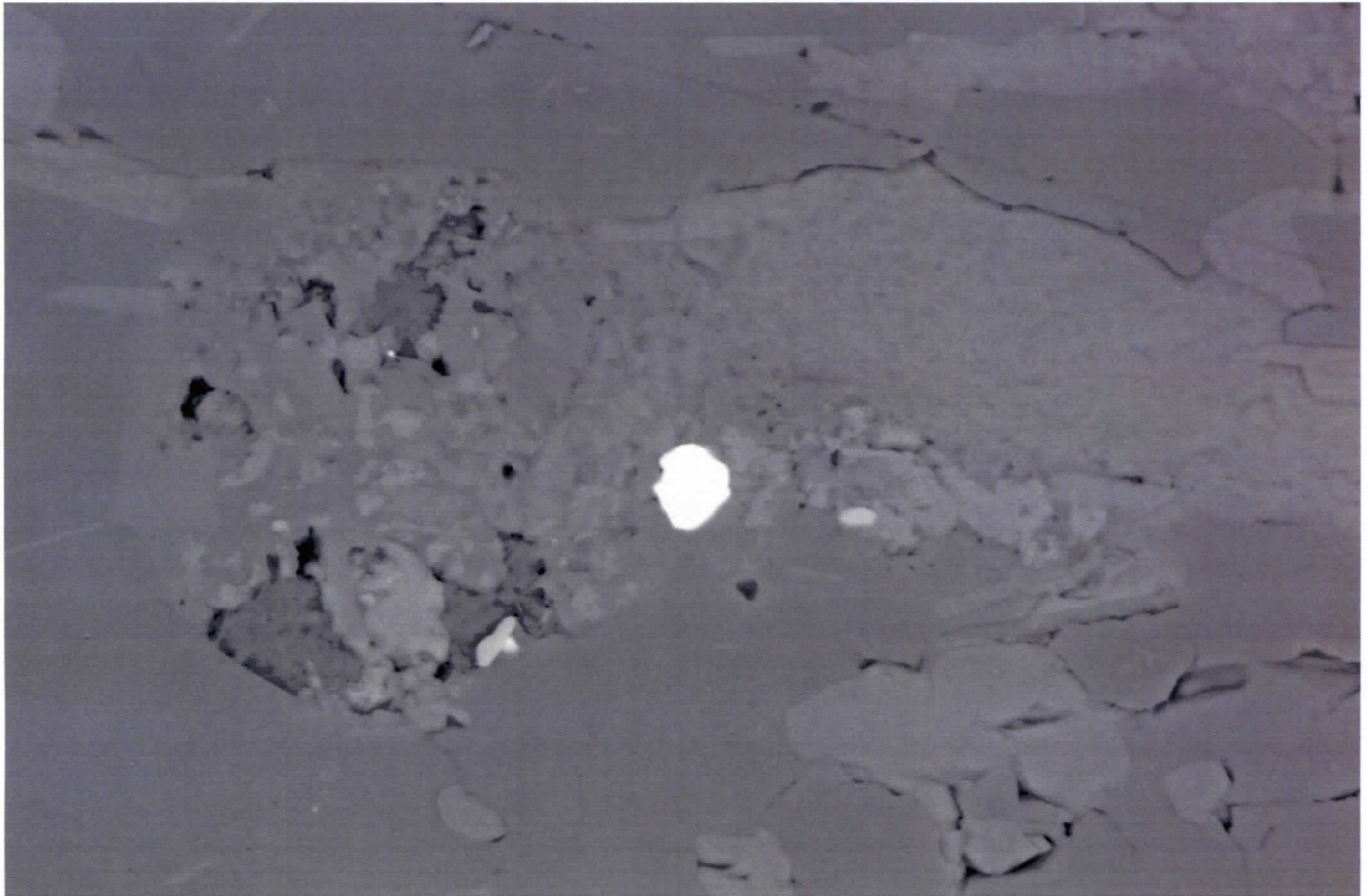
Filament Age = 1457.81 Hours

Date : 23 Dec 2003 Time : 10:48:58

Mag = 260 X

Noise Reduction = Line Avg

Scan Speed = 5



**SUPRA 55VP**

Serial No. = LEO SUPRA 55VP-23-02

10µm



WD = 18 mm

Detector = QBSD

EHT = 25.00 kV

Gun Vacuum = 7.44e-010 Torr

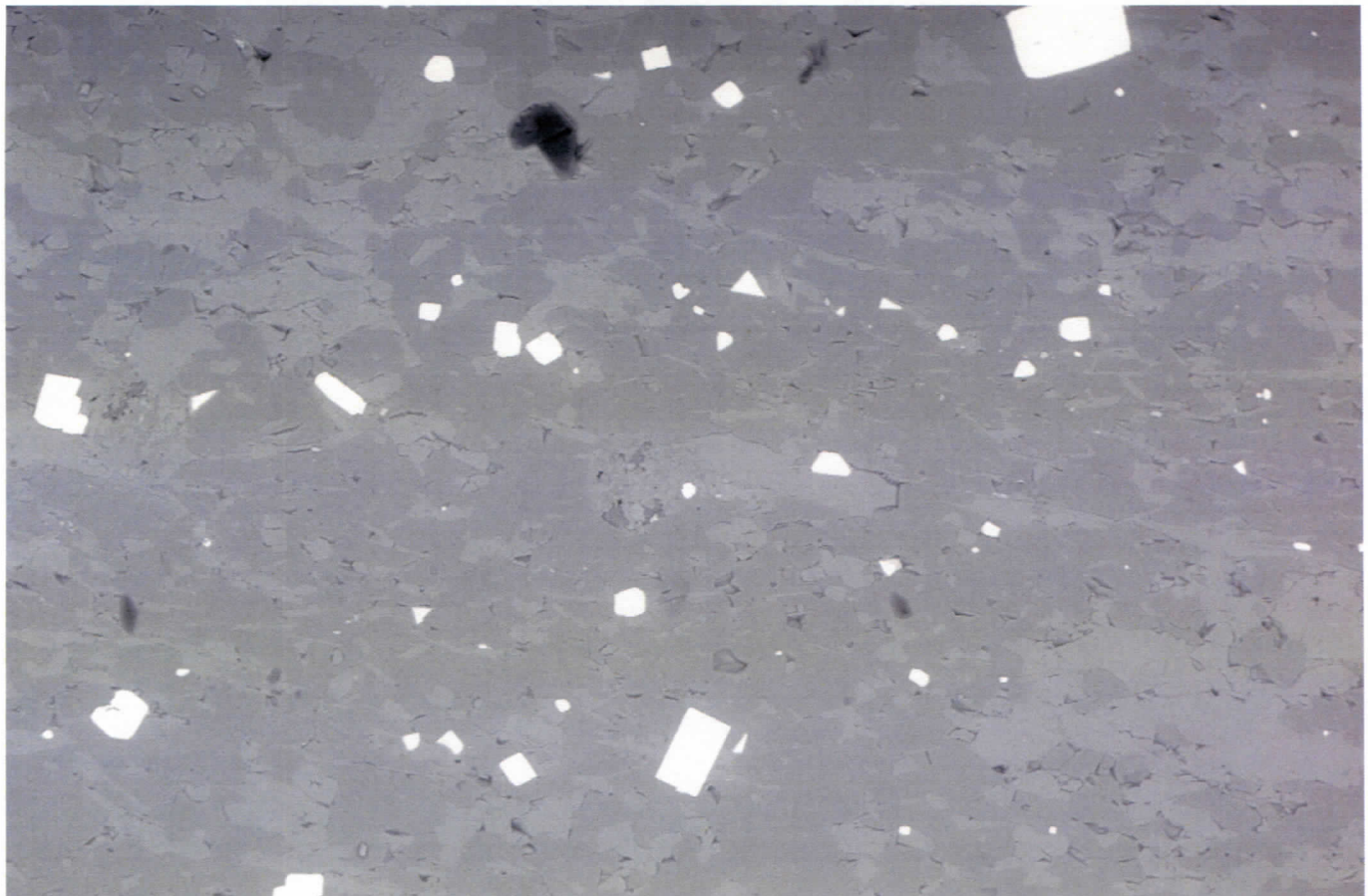
Filament Age = 1458.13 Hours

Date : 23 Dec 2003 Time : 11:07:59

Mag = 1.43 K X

Noise Reduction = Line Avg

Scan Speed = 5



**SUPRA 55VP**

Serial No. = LEO SUPRA 55VP-23-02

100µm



WD = 18 mm

Detector = QBSD

EHT = 25.00 kV

Gun Vacuum = 7.44e-010 Torr

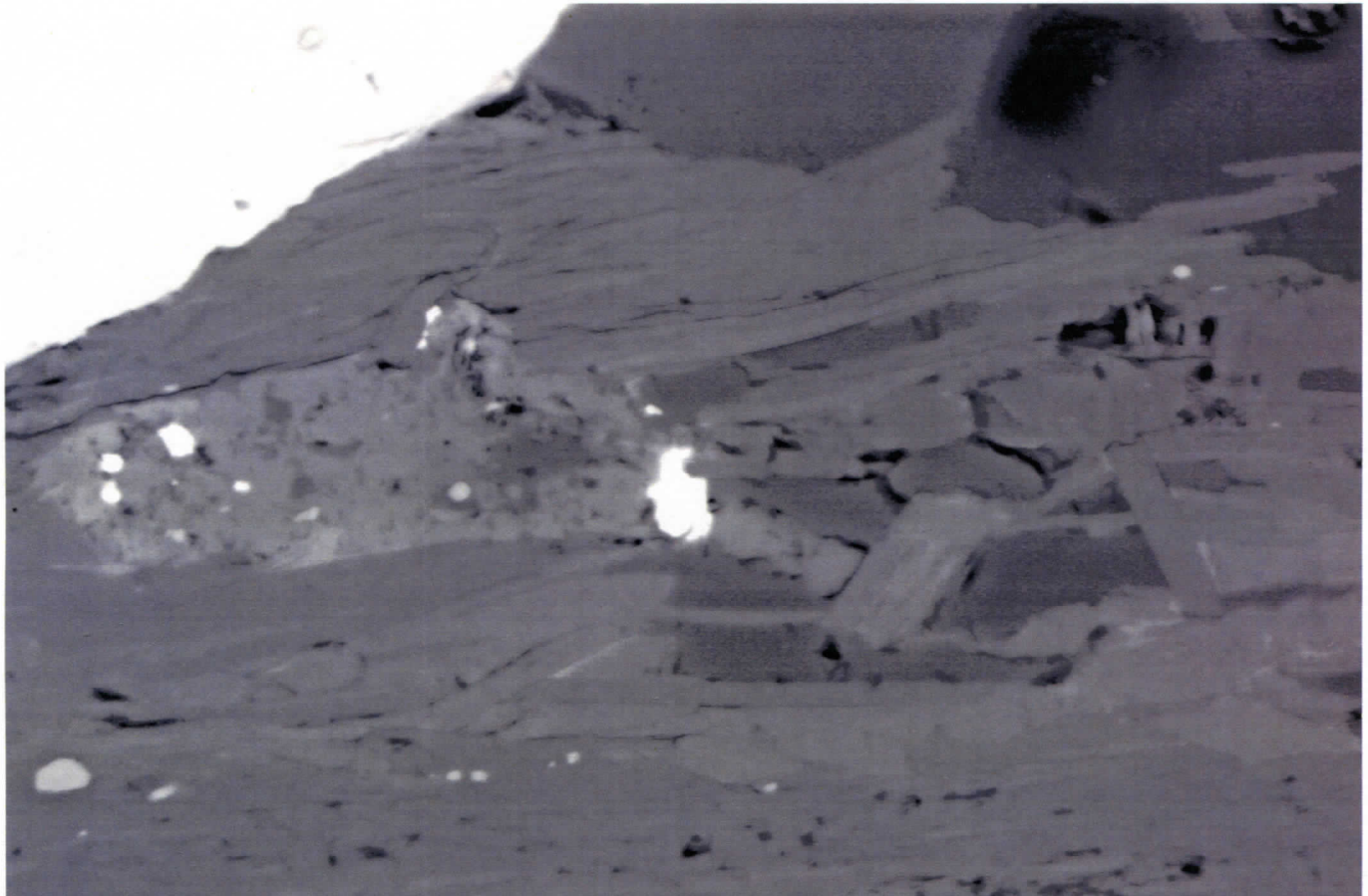
Filament Age = 1458.12 Hours

Date : 23 Dec 2003 Time : 11:06:24

Mag = 257 X

Noise Reduction = Line Avg

Scan Speed = 5



**SUPRA 55VP**

Serial No. = LEO SUPRA 55VP-23-02

10µm



WD = 16 mm

Detector = QBSD

EHT = 25.00 kV

Gun Vacuum = 6.91e-010 Torr

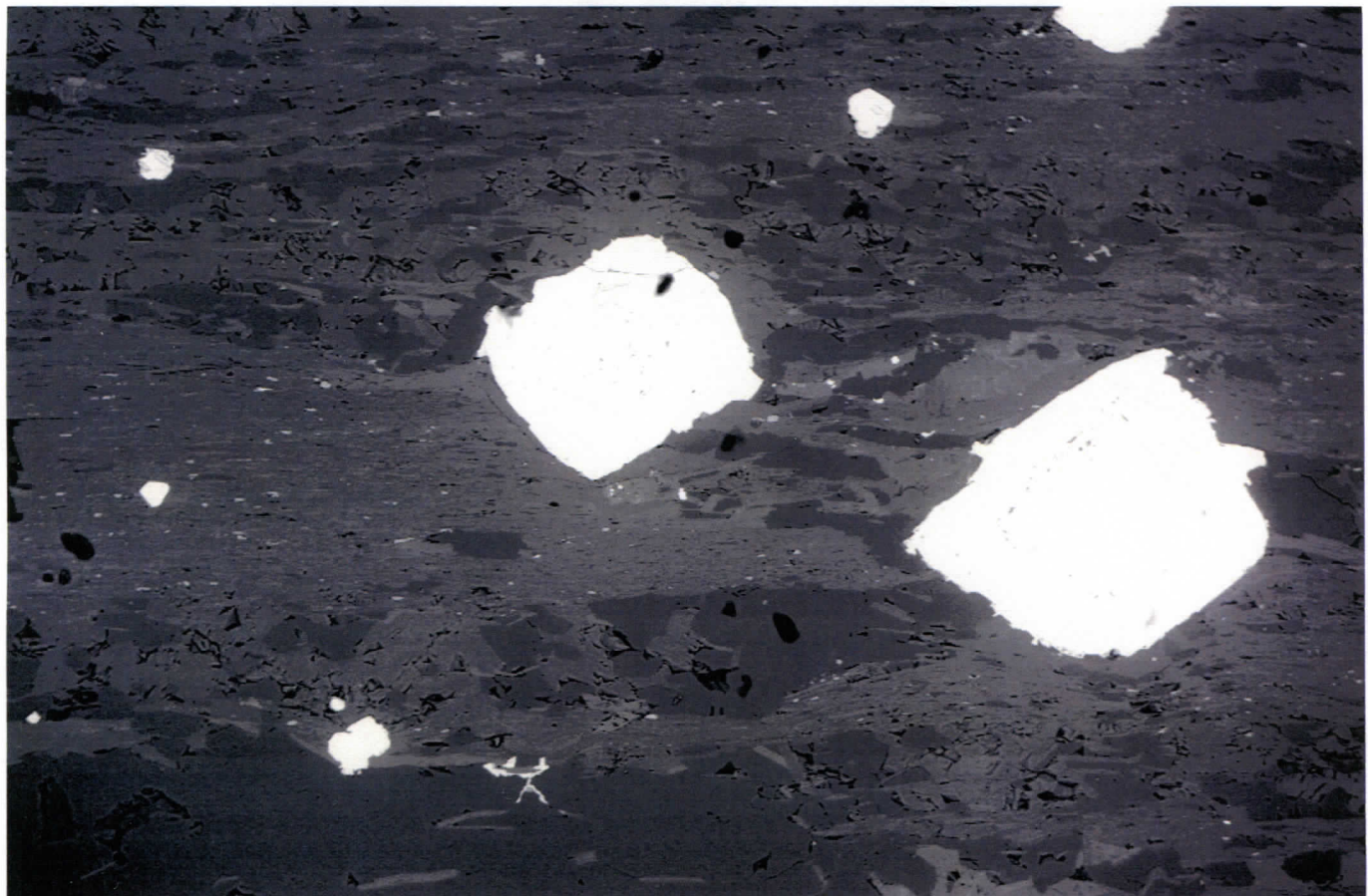
Filament Age = 1603.03 Hours

Date : 29 Dec 2003 Time : 13:42:13

Mag = 1.97 K X

Noise Reduction = Line Avg

Scan Speed = 5



**SUPRA 55VP**

Serial No. = LEO SUPRA 55VP-23-02

100µm



WD = 16 mm

Detector = QBSD

EHT = 25.00 kV

Gun Vacuum = 6.88e-010 Torr

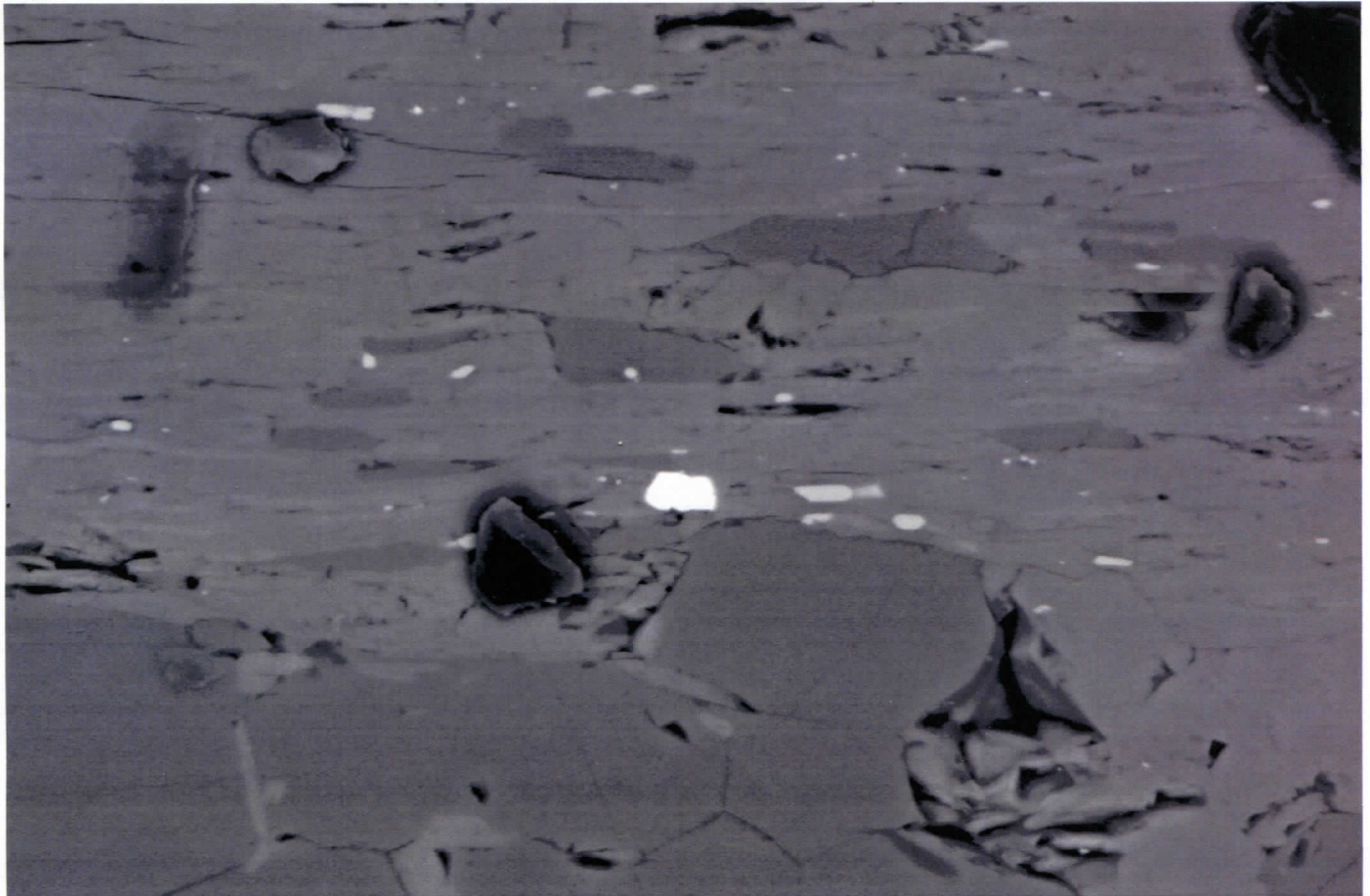
Filament Age = 1603.01 Hours

Date : 29 Dec 2003 Time : 13:40:41

Mag = 246 X

Noise Reduction = Line Avg

Scan Speed = 5



**SUPRA 55VP**  
Serial No. = LEO SUPRA 55VP-23-02

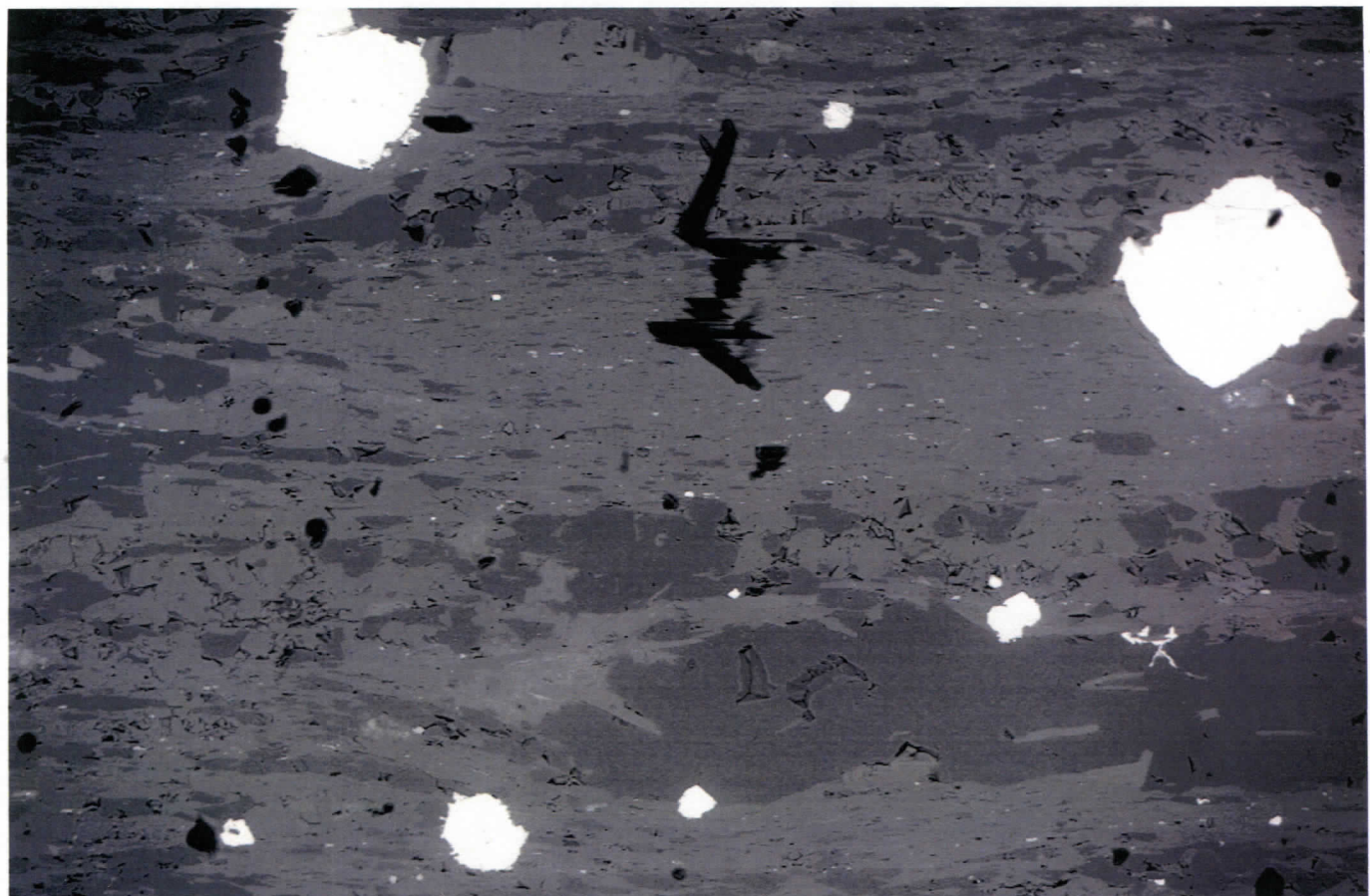


WD = 16 mm  
Mag = 1.72 K X

Detector = QBSD  
Noise Reduction = Line Avg

EHT = 25.00 kV  
Scan Speed = 5

Gun Vacuum = 6.90e-010 Torr  
Filament Age = 1602.96 Hours  
Date :29 Dec 2003 Time :13:38:20



**SUPRA 55VP**  
Serial No. = LEO SUPRA 55VP-23-02



WD = 16 mm  
Mag = 211 X

Detector = QBSD  
Noise Reduction = Line Avg

EHT = 25.00 kV  
Scan Speed = 5

Gun Vacuum = 6.94e-010 Torr  
Filament Age = 1602.94 Hours  
Date :29 Dec 2003 Time :13:36:47