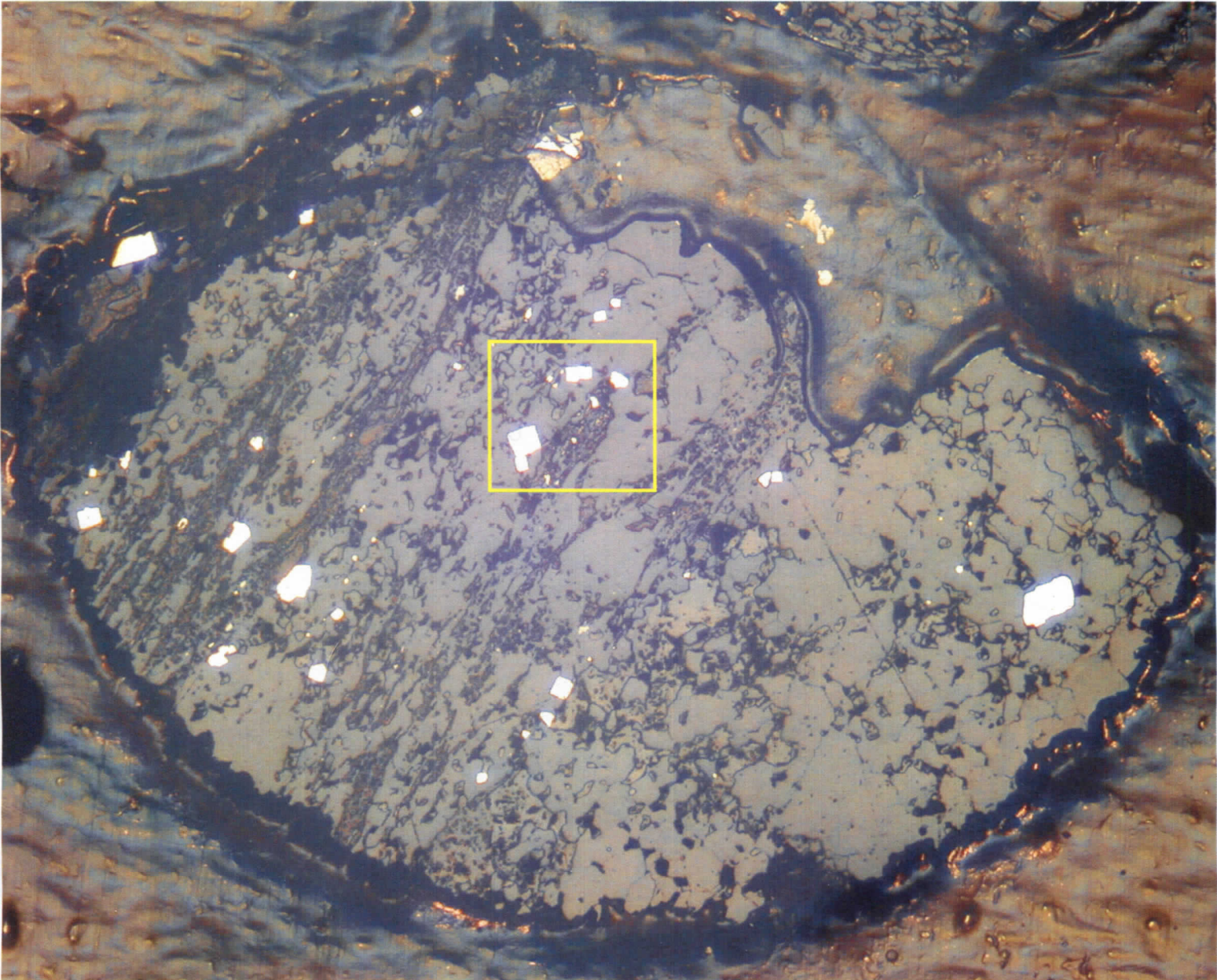
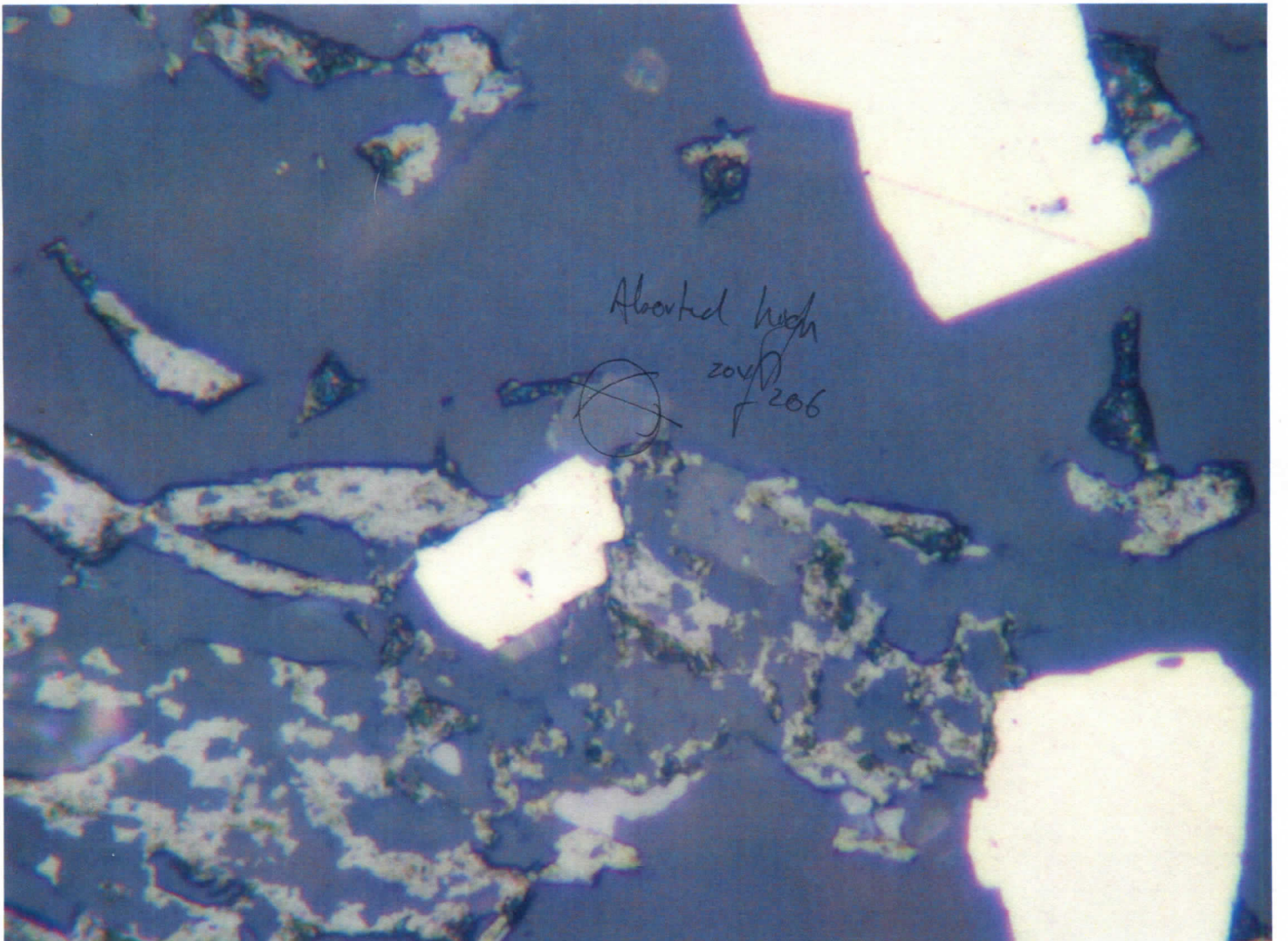
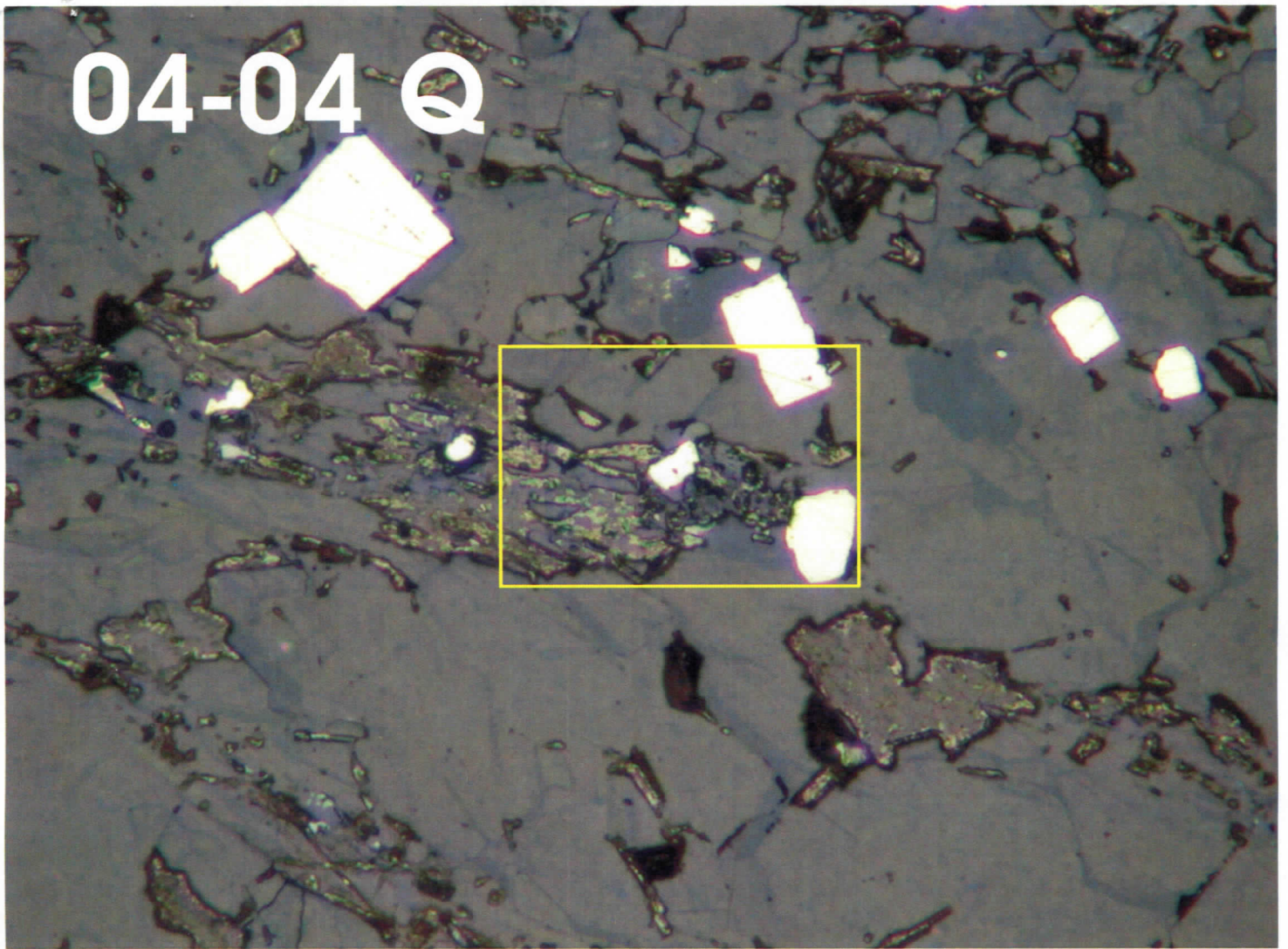
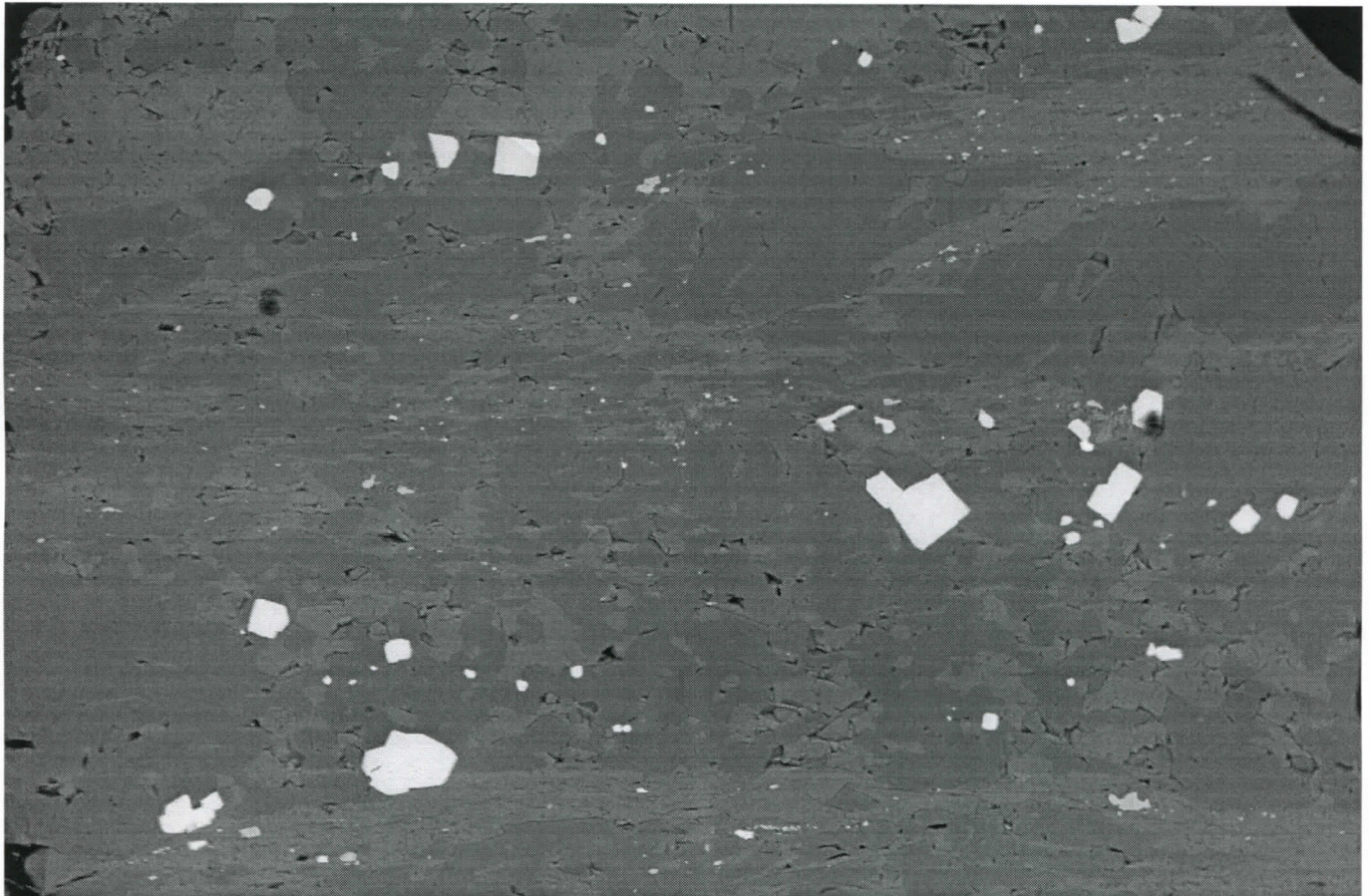


04-04 Q



04-04 Q

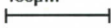




SUPRA 55VP

Serial No. = LEO SUPRA 55VP-23-02

100µm



WD = 12 mm

Mag = 262 X

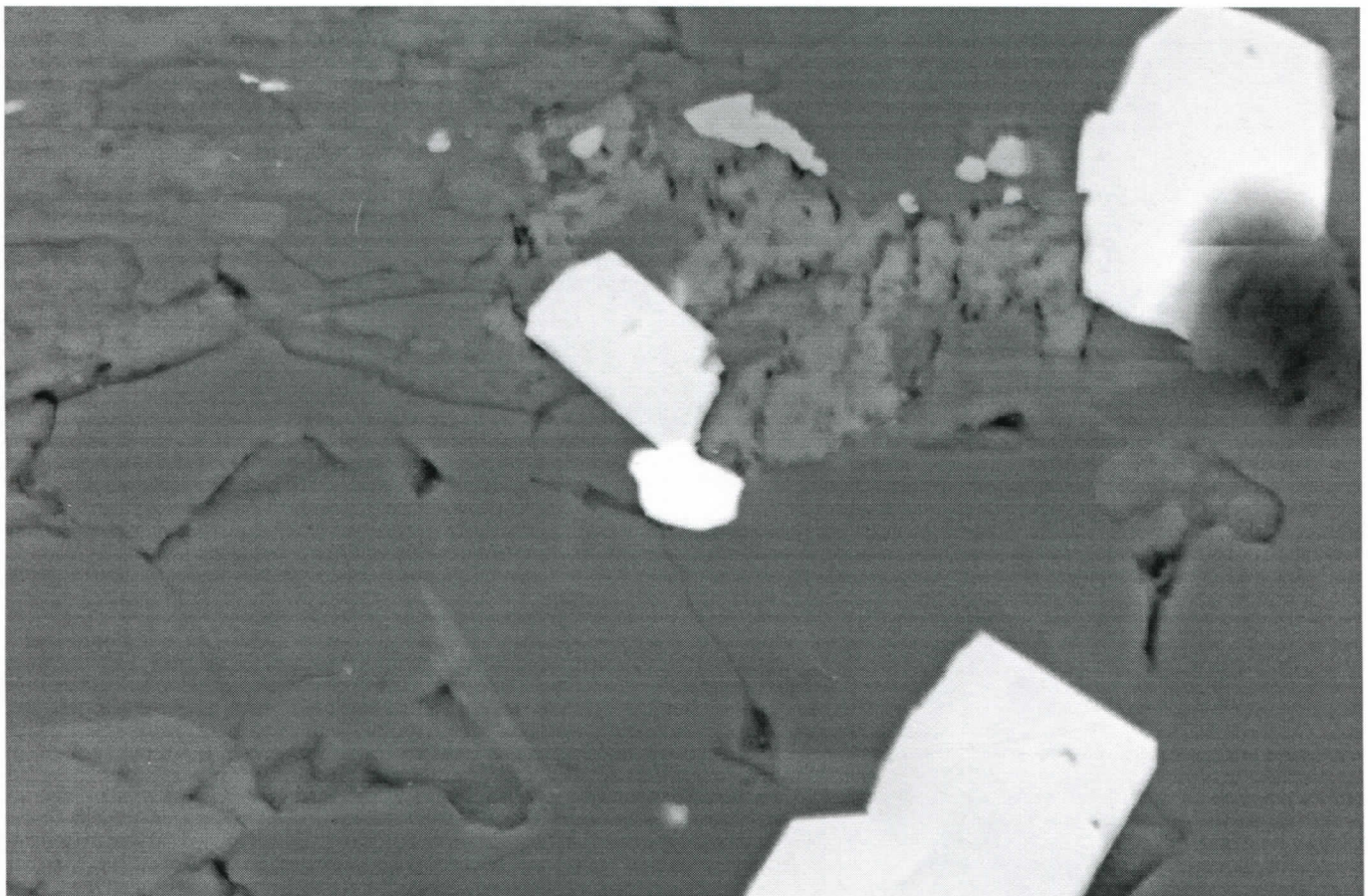
Detector = QBSD

Noise Reduction = Line Avg

EHT = 25.00 kV

Scan Speed = 5

Gun Vacuum = 4.29e-010 Torr
Filament Age = 2025.14 Hours
Date : 19 Jan 2004 Time : 10:18:23



SUPRA 55VP

Serial No. = LEO SUPRA 55VP-23-02

10µm



WD = 12 mm

Mag = 2.25 K X

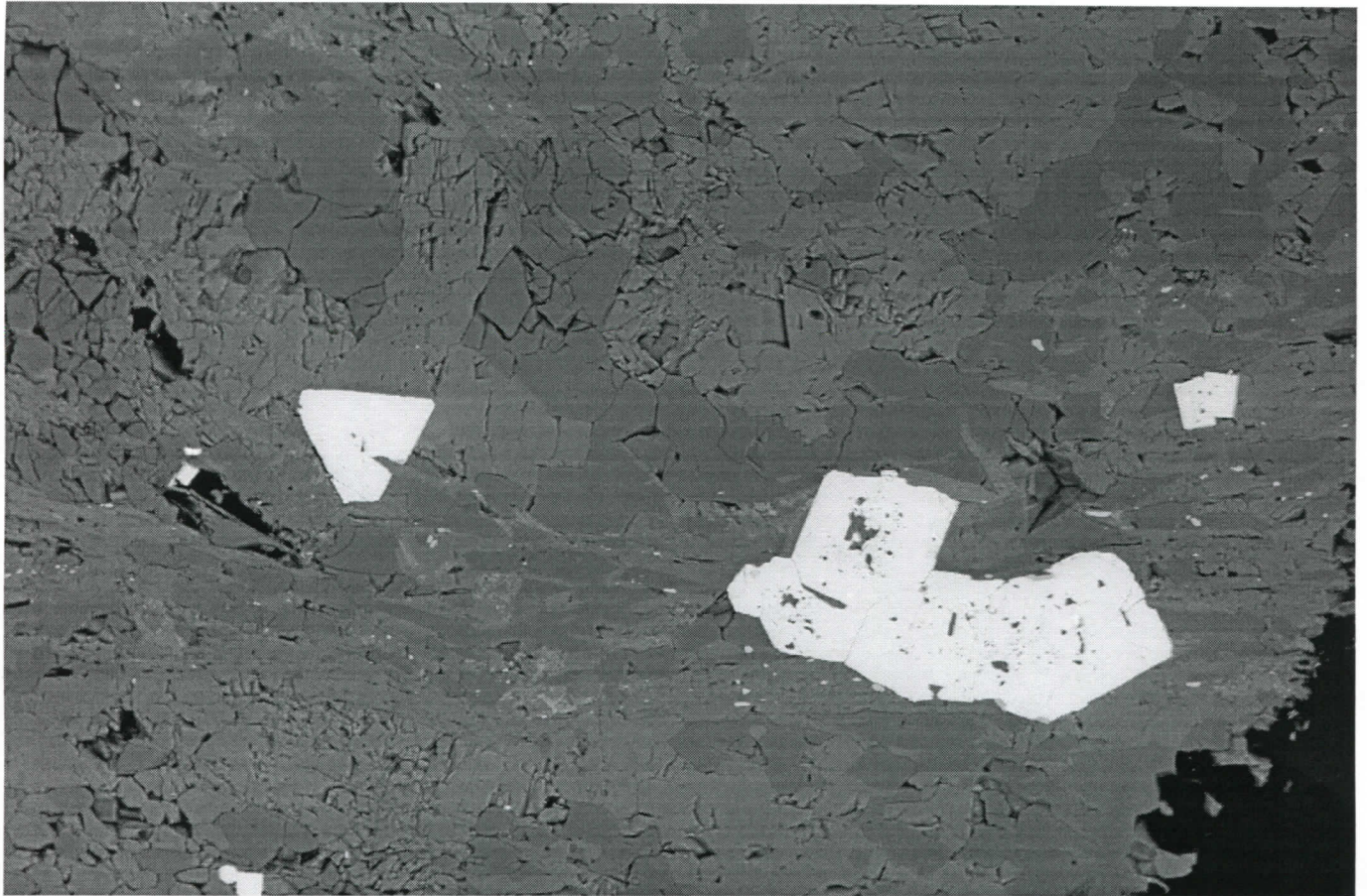
Detector = QBSD

Noise Reduction = Line Avg

EHT = 25.00 kV

Scan Speed = 5

Gun Vacuum = 4.25e-010 Torr
Filament Age = 2025.22 Hours
Date : 19 Jan 2004 Time : 10:22:42



SUPRA 55VP

Serial No. = LEO SUPRA 55VP-23-02

20µm
┌───┐

WD = 12 mm

Detector = QBSD

EHT = 25.00 kV

Gun Vacuum = 4.27e-010 Torr

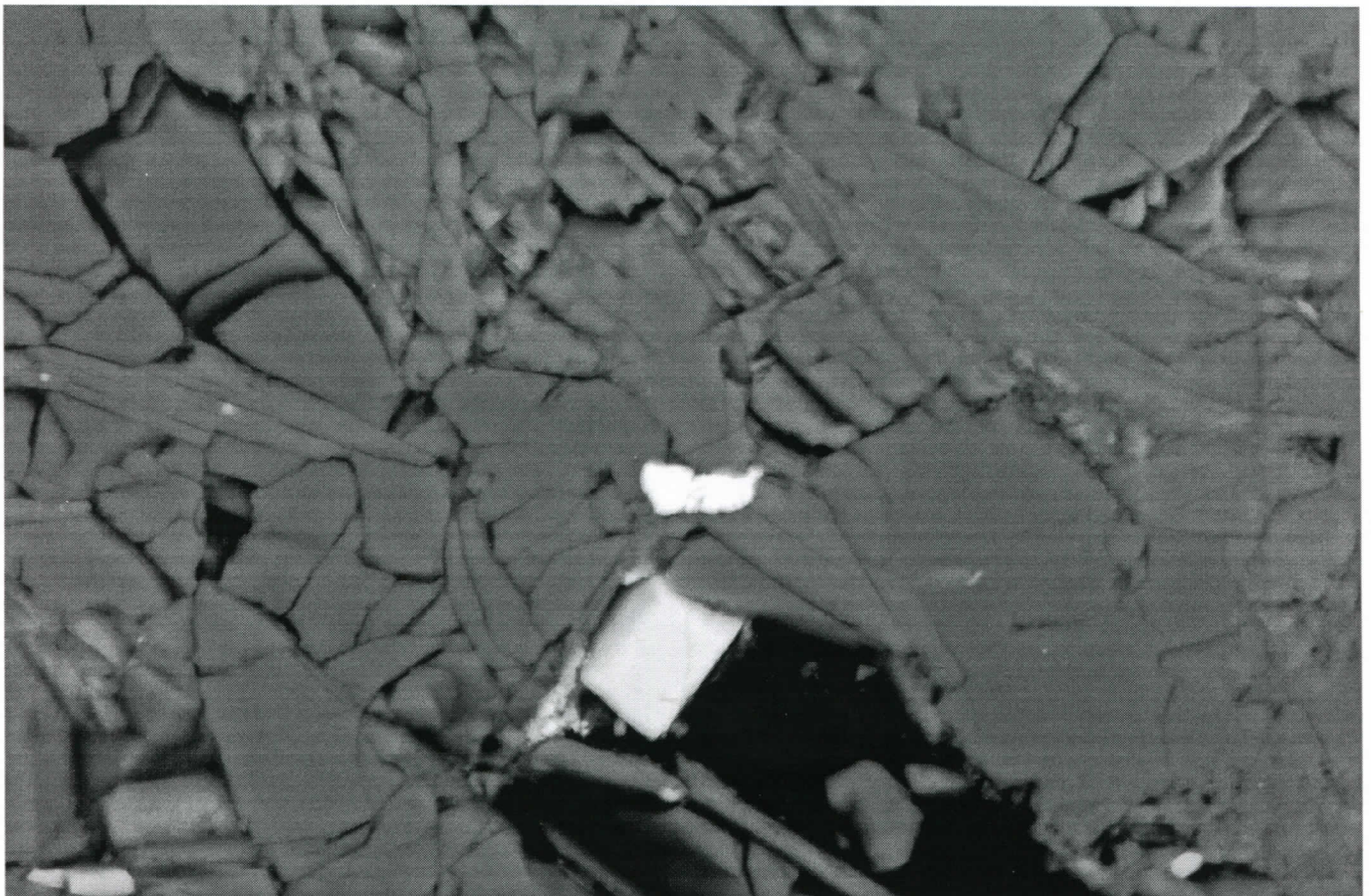
Filament Age = 2025.36 Hours

Date : 19 Jan 2004 Time : 10:31:08

Mag = 329 X

Noise Reduction = Line Avg

Scan Speed = 5



SUPRA 55VP

Serial No. = LEO SUPRA 55VP-23-02

10µm
┌───┐

WD = 12 mm

Detector = QBSD

EHT = 25.00 kV

Gun Vacuum = 4.26e-010 Torr

Filament Age = 2025.39 Hours

Date : 19 Jan 2004 Time : 10:32:40

Mag = 2.37 K X

Noise Reduction = Line Avg

Scan Speed = 5