

SUPRA 55VP

Serial No. = LEO SUPRA 55VP-23-02

10µm



WD = 18 mm

Detector = QBSD

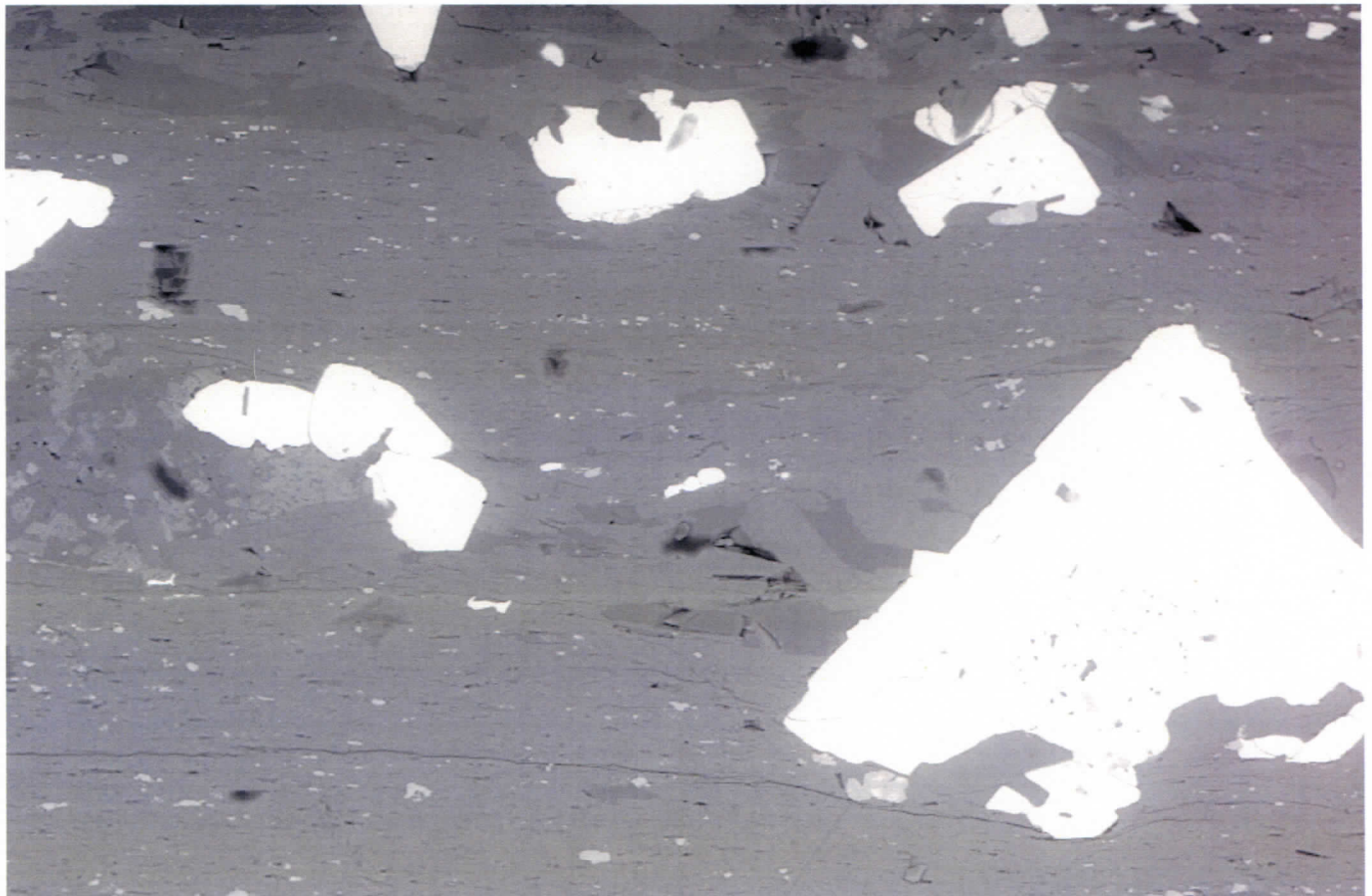
EHT = 25.00 kV

Gun Vacuum = 6.77e-010 Torr
Filament Age = 1478.74 Hours
Date : 24 Dec 2003 Time : 8:58:00

Mag = 1.57 K X

Noise Reduction = Line Avg

Scan Speed = 5



SUPRA 55VP

Serial No. = LEO SUPRA 55VP-23-02

20µm



WD = 18 mm

Detector = QBSD

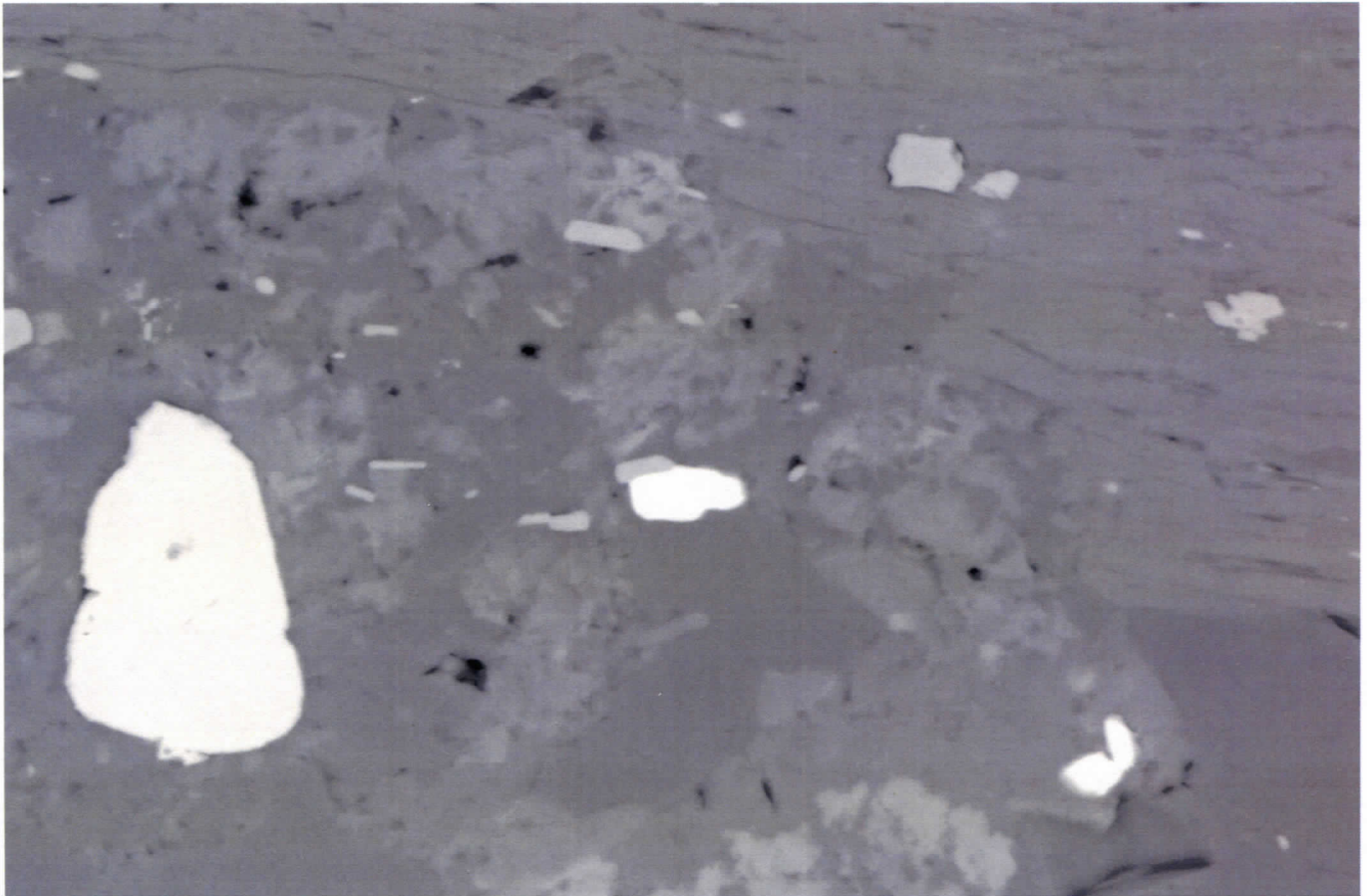
EHT = 25.00 kV

Gun Vacuum = 6.74e-010 Torr
Filament Age = 1478.71 Hours
Date : 24 Dec 2003 Time : 8:58:23

Mag = 371 X

Noise Reduction = Line Avg

Scan Speed = 5



SUPRA 55VP

Serial No. = LEO SUPRA 55VP-23-02



WD = 18 mm

Detector = QBSD

EHT = 25.00 kV

Gun Vacuum = 7.23e-010 Torr

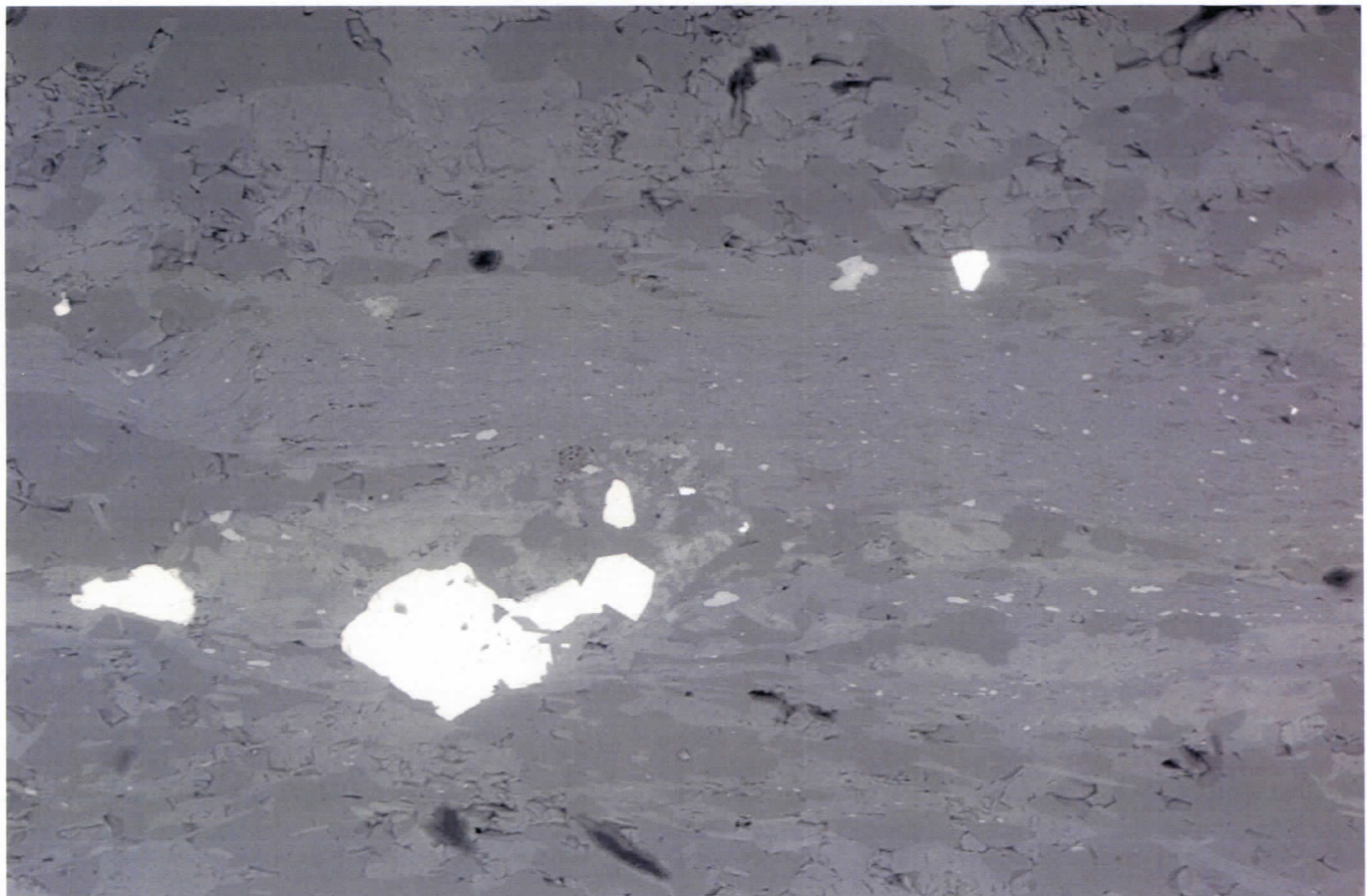
Filament Age = 1480.92 Hours

Date : 24 Dec 2003 Time : 11:08:13

Mag = 2.17 K X

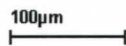
Noise Reduction = Line Avg

Scan Speed = 5



SUPRA 55VP

Serial No. = LEO SUPRA 55VP-23-02



WD = 18 mm

Detector = QBSD

EHT = 25.00 kV

Gun Vacuum = 7.23e-010 Torr

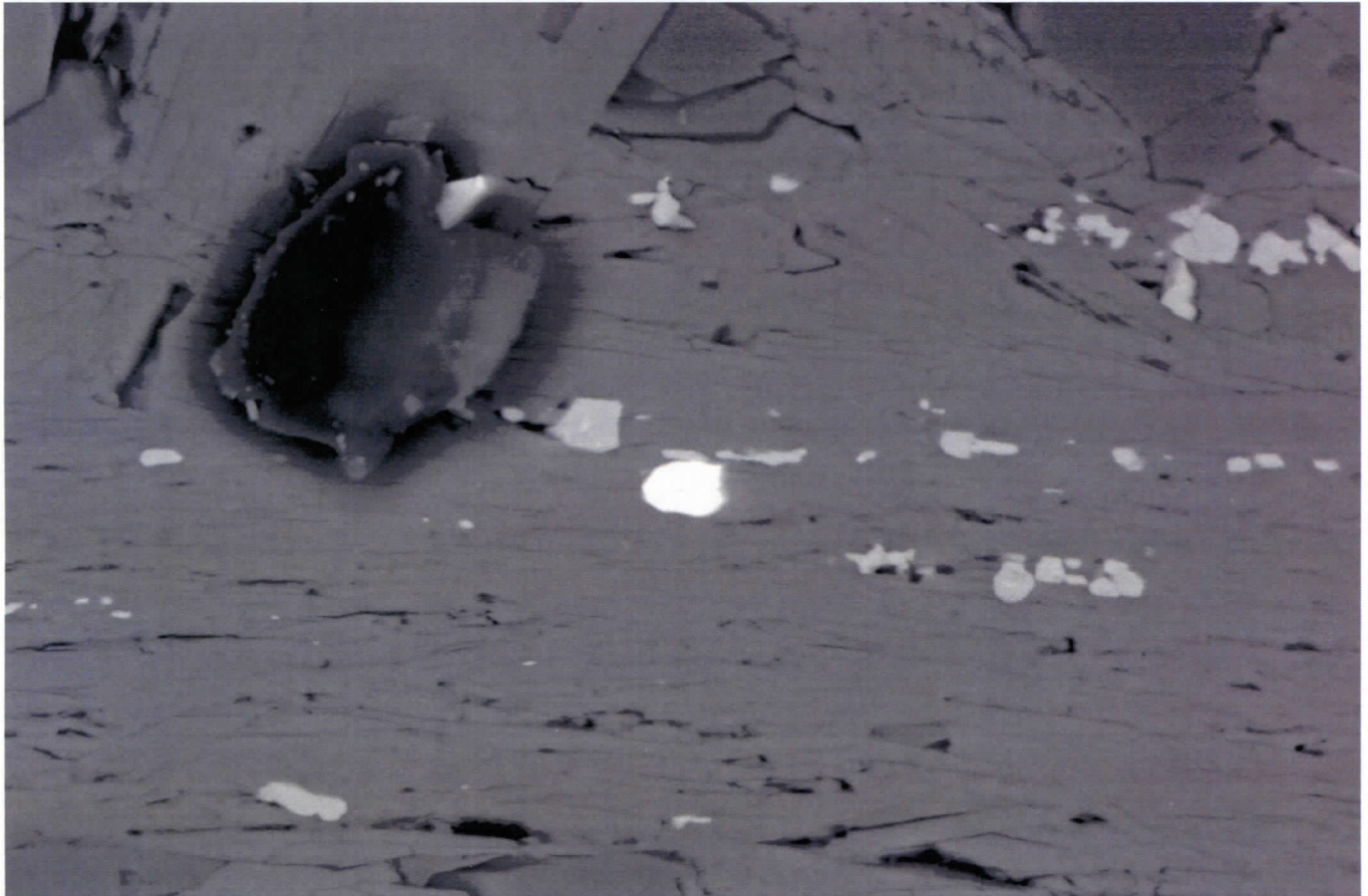
Filament Age = 1480.88 Hours

Date : 24 Dec 2003 Time : 11:06:41

Mag = 298 X

Noise Reduction = Line Avg

Scan Speed = 5



SUPRA 55VP

Serial No. = LEO SUPRA 55VP-23-02

10µm



WD = 18 mm

Detector = QBSD

EHT = 25.00 kV

Gun Vacuum = 6.88e-010 Torr

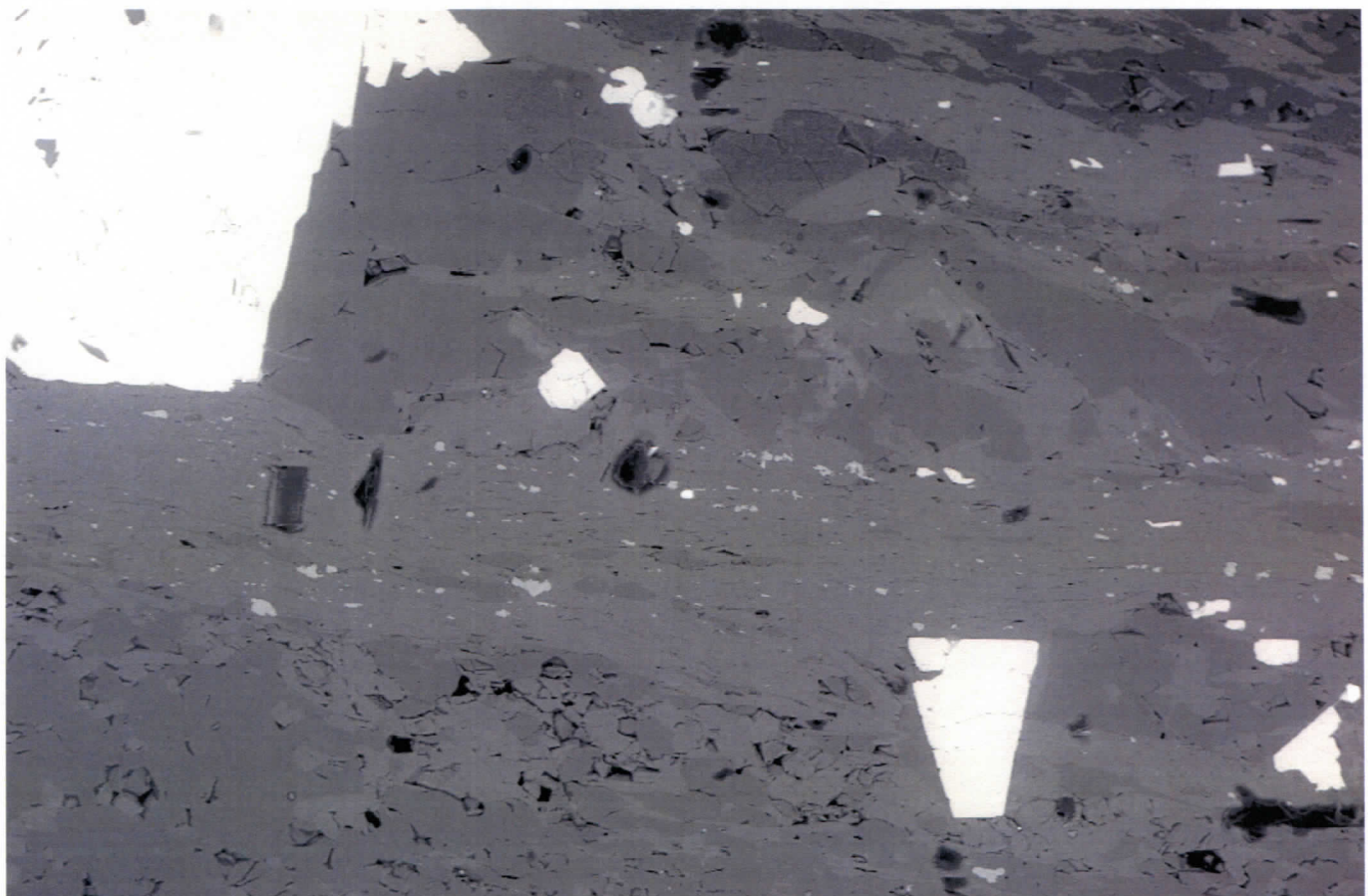
Filament Age = 1478.96 Hours

Date :24 Dec 2003 Time :9:10:58

Mag = 1.76 K X

Noise Reduction = Line Avg

Scan Speed = 5



SUPRA 55VP

Serial No. = LEO SUPRA 55VP-23-02

100µm



WD = 18 mm

Detector = QBSD

EHT = 25.00 kV

Gun Vacuum = 6.84e-010 Torr

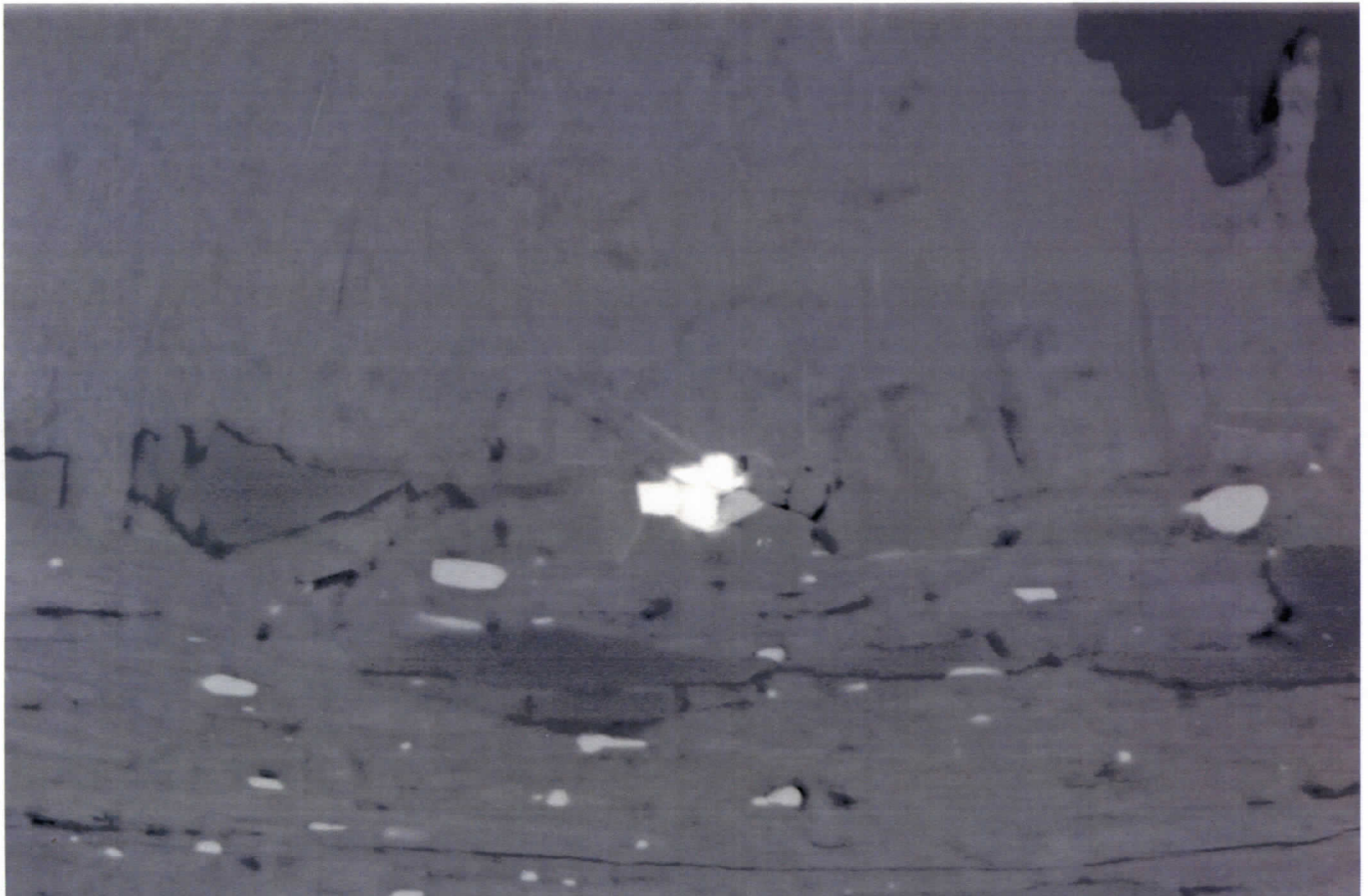
Filament Age = 1478.93 Hours

Date :24 Dec 2003 Time :9:09:26

Mag = 274 X

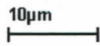
Noise Reduction = Line Avg

Scan Speed = 5



SUPRA 55VP

Serial No. = LEO SUPRA 55VP-23-02



WD = 18 mm

Detector = QBSD

EHT = 25.00 kV

Gun Vacuum = 6.88e-010 Torr

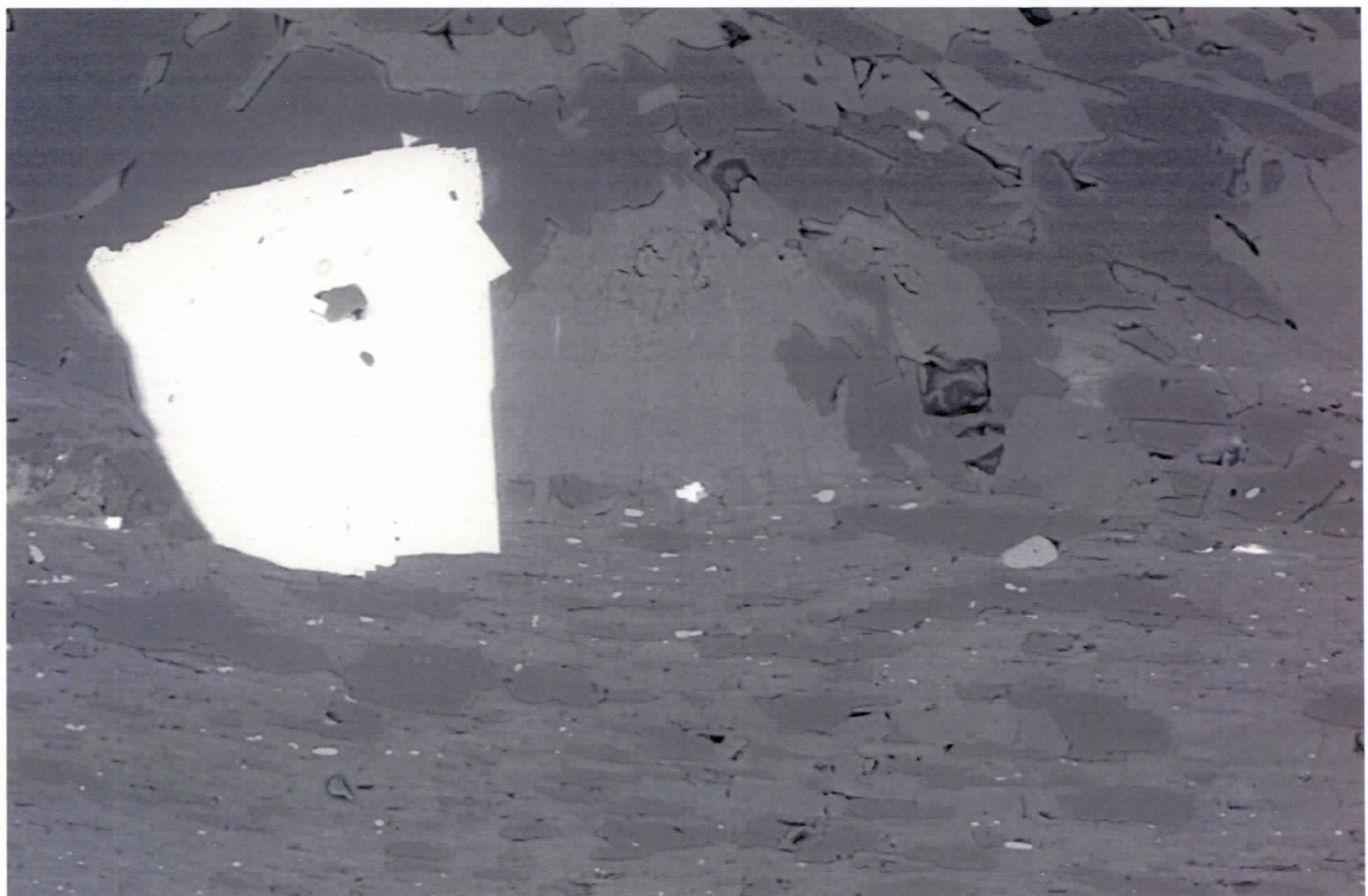
Filament Age = 1455.24 Hours

Date : 23 Dec 2003 Time : 8:14:57

Mag = 2.31 K X

Noise Reduction = Line Avg

Scan Speed = 5



SUPRA 55VP

Serial No. = LEO SUPRA 55VP-23-02



WD = 18 mm

Detector = QBSD

EHT = 25.00 kV

Gun Vacuum = 6.88e-010 Torr

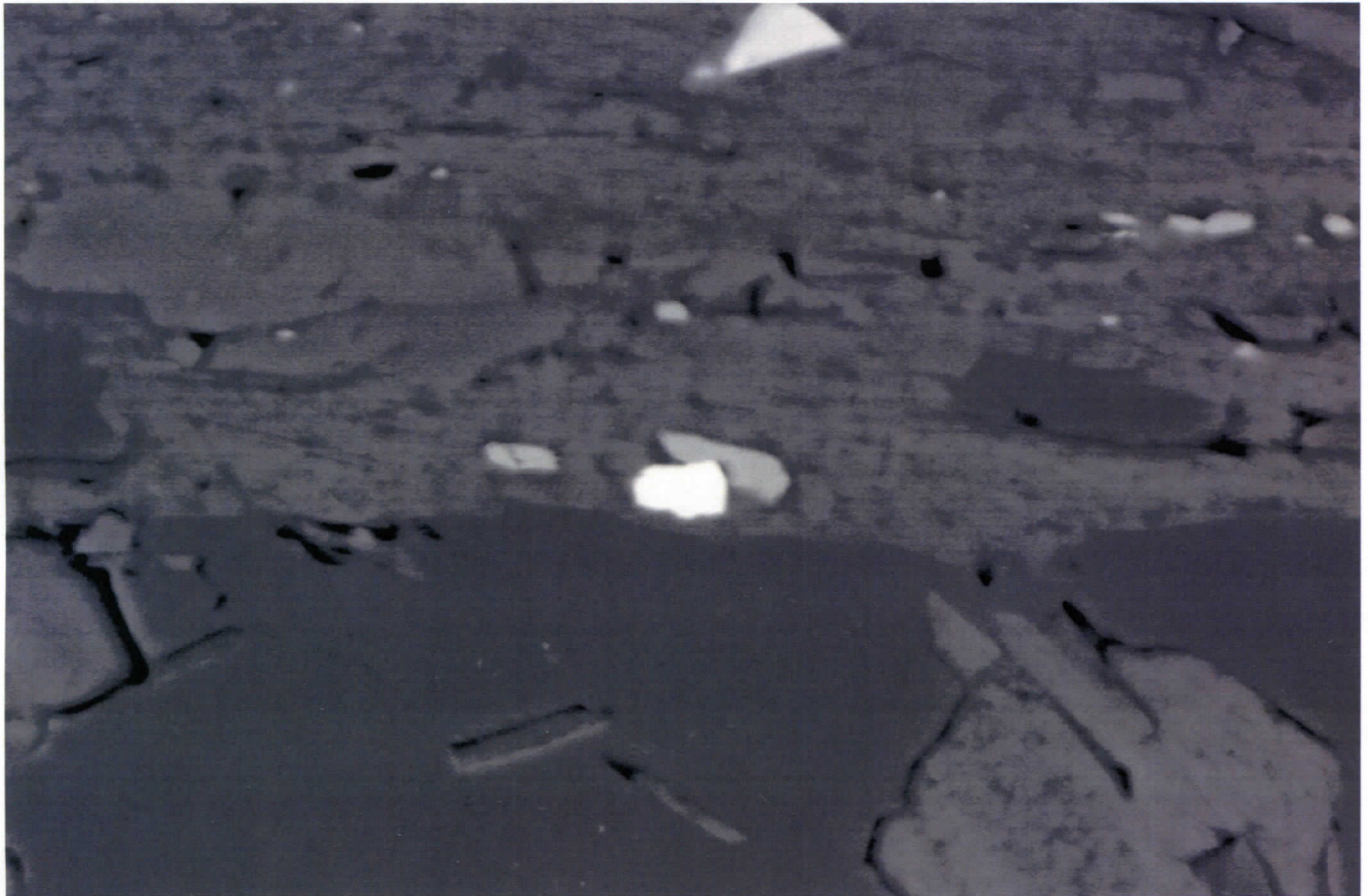
Filament Age = 1455.22 Hours

Date : 23 Dec 2003 Time : 8:13:25

Mag = 579 X

Noise Reduction = Line Avg

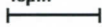
Scan Speed = 5



SUPRA 55VP

Serial No. = LEO SUPRA 55VP-23-02

10µm



WD = 18 mm

Detector = QBSD

EHT = 25.00 kV

Gun Vacuum = 7.10e-010 Torr

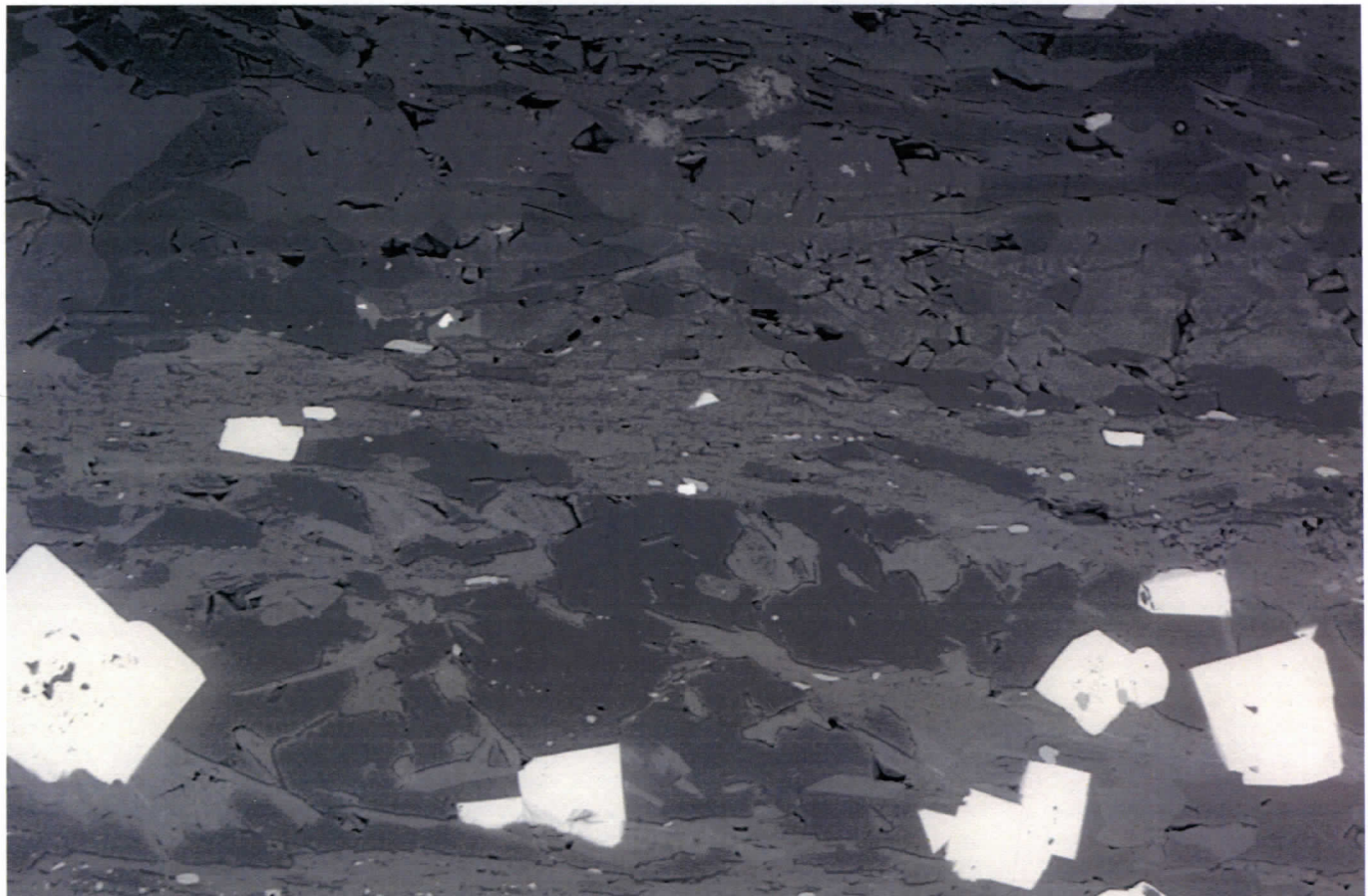
Filament Age = 1455.56 Hours

Date : 23 Dec 2003 Time : 8:33:37

Mag = 2.38 K X

Noise Reduction = Line Avg

Scan Speed = 5



SUPRA 55VP

Serial No. = LEO SUPRA 55VP-23-02

20µm



WD = 18 mm

Detector = QBSD

EHT = 25.00 kV

Gun Vacuum = 6.87e-010 Torr

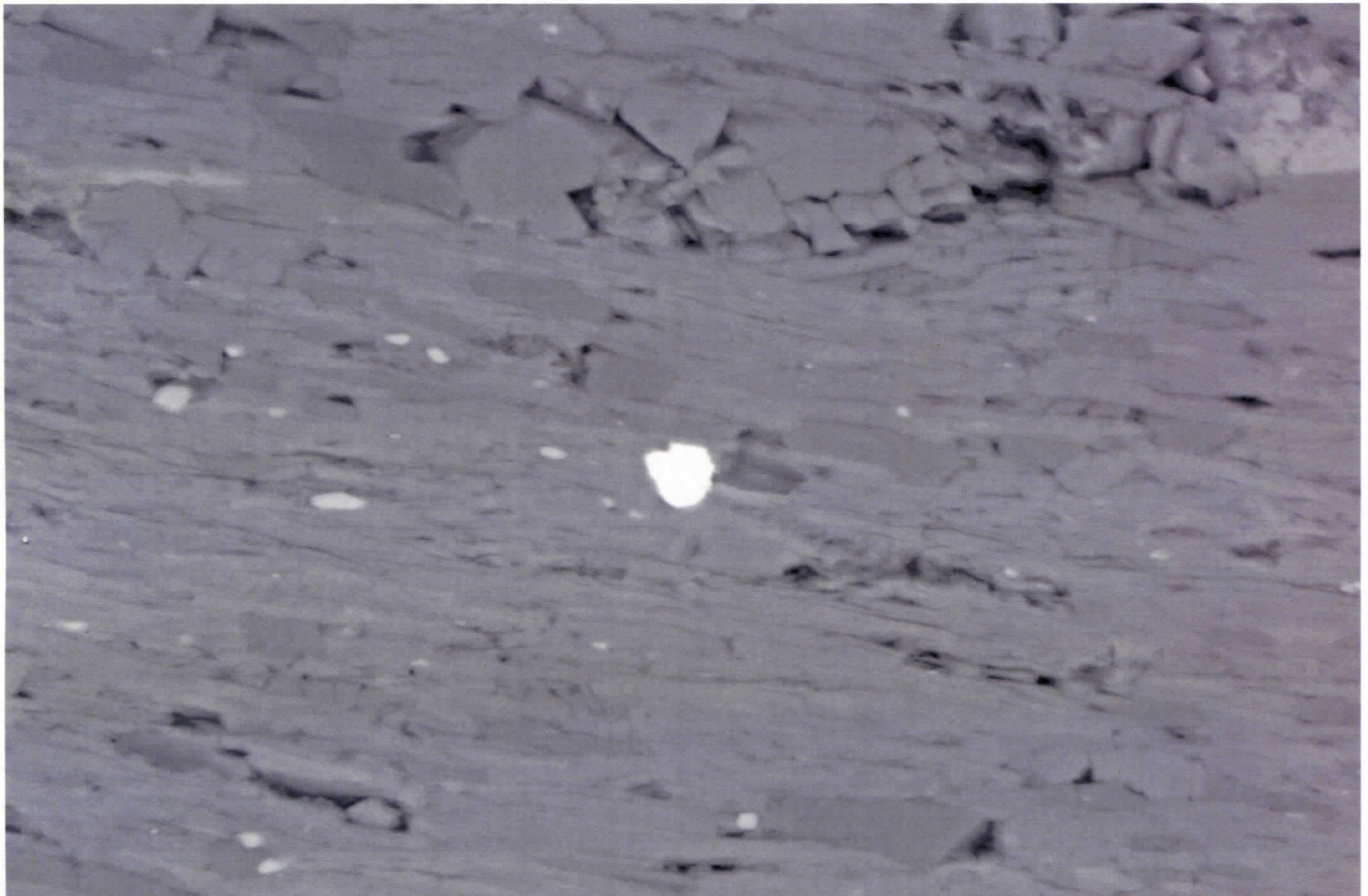
Filament Age = 1455.54 Hours

Date : 23 Dec 2003 Time : 8:32:05

Mag = 475 X

Noise Reduction = Line Avg

Scan Speed = 5



SUPRA 55VP

Serial No. = LEO SUPRA 55VP-23-02

10µm



WD = 18 mm

Detector = QBSD

EHT = 25.00 kV

Gun Vacuum = 7.30e-010 Torr

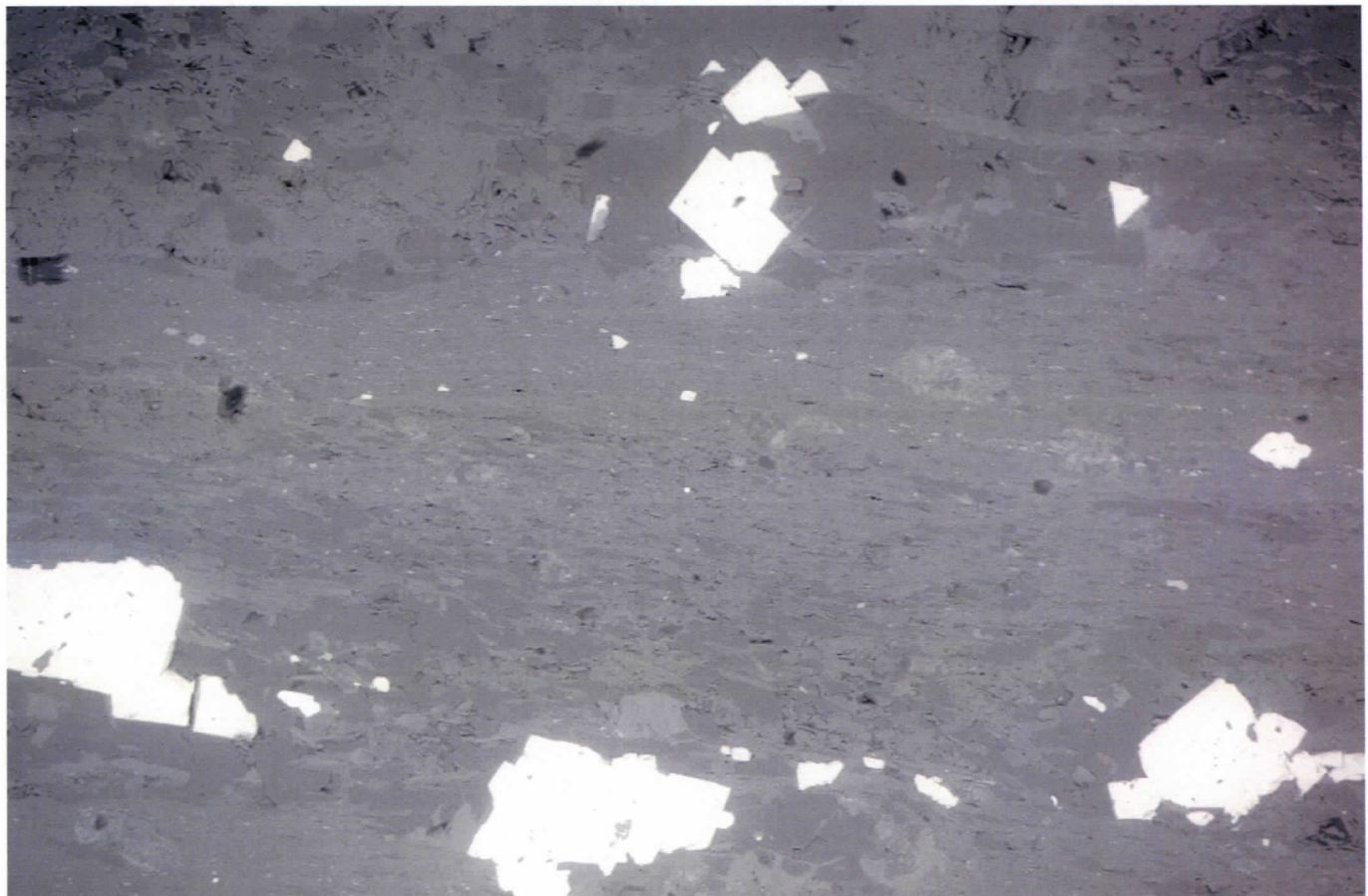
Filament Age = 1481.23 Hours

Date :24 Dec 2003 Time :11:27:45

Mag = 1.99 K X

Noise Reduction = Line Avg

Scan Speed = 5



SUPRA 55VP

Serial No. = LEO SUPRA 55VP-23-02

100µm



WD = 18 mm

Detector = QBSD

EHT = 25.00 kV

Gun Vacuum = 7.30e-010 Torr

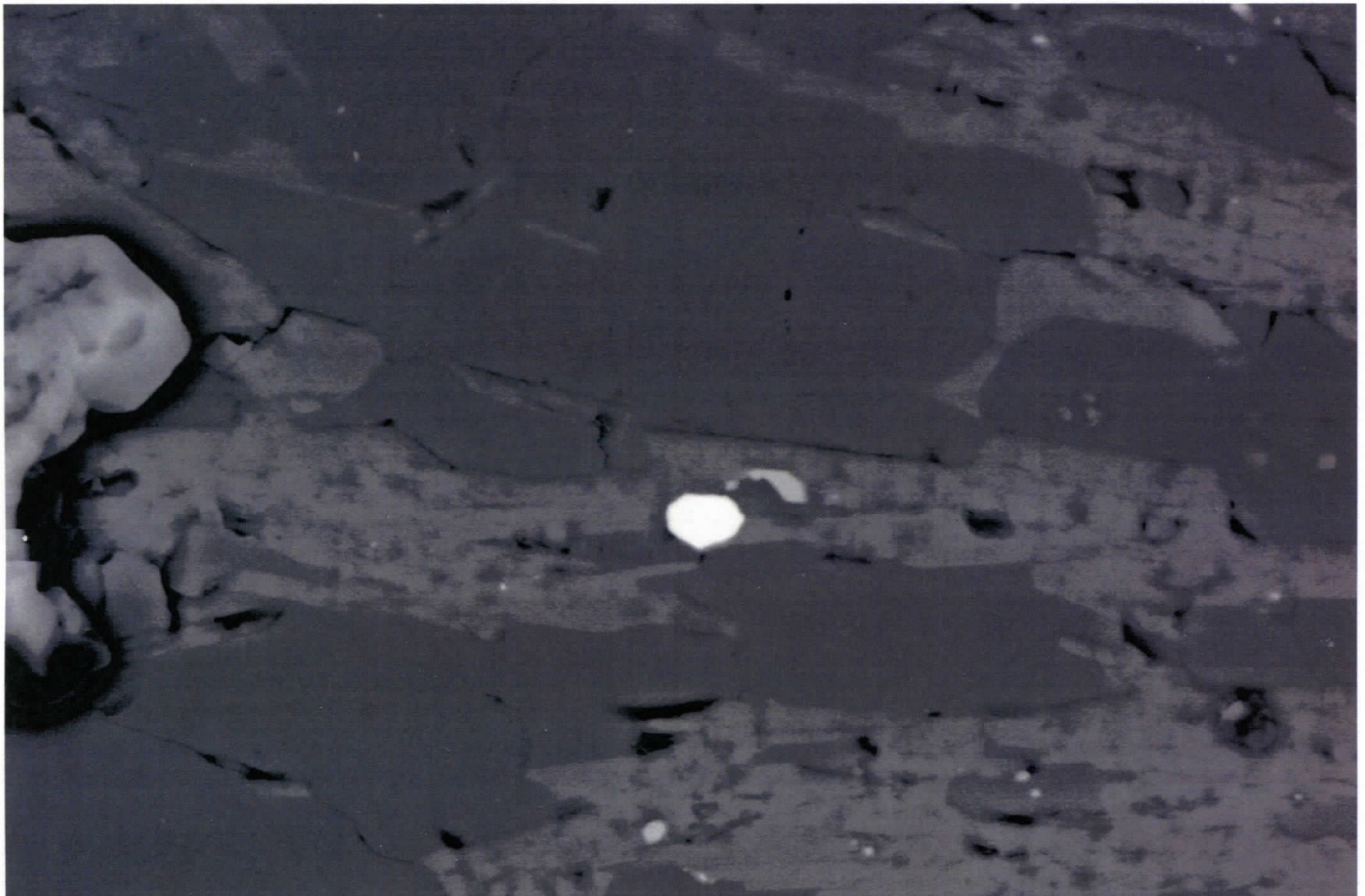
Filament Age = 1481.22 Hours

Date :24 Dec 2003 Time :11:26:14

Mag = 166 X

Noise Reduction = Line Avg

Scan Speed = 5



SUPRA 55VP

Serial No. = LEO SUPRA 55VP-23-02

10µm



WD = 18 mm

Detector = QBSD

EHT = 25.00 kV

Gun Vacuum = 7.22e-010 Torr

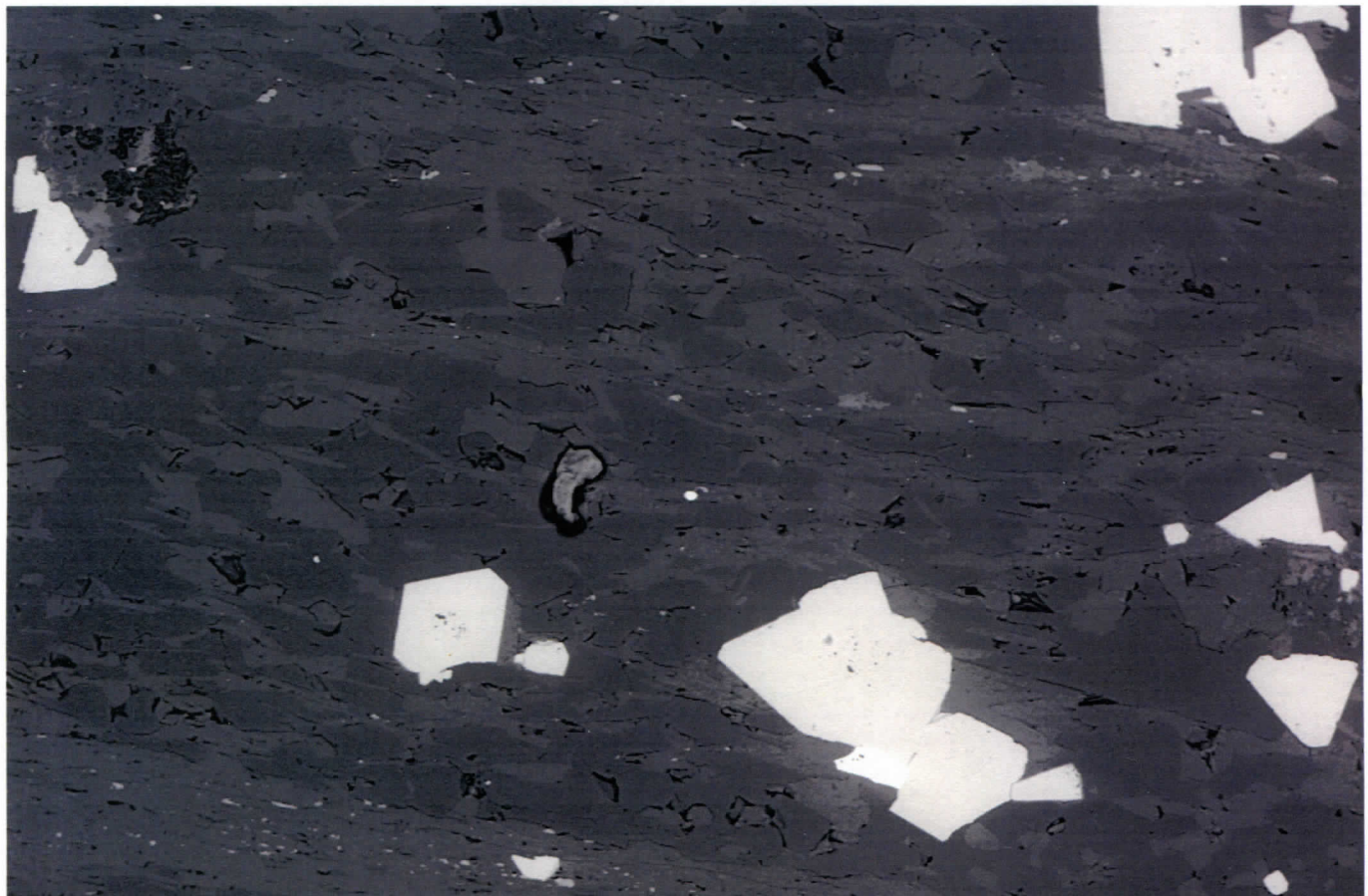
Filament Age = 1457.13 Hours

Date :23 Dec 2003 Time :10:07:24

Mag = 2.06 K X

Noise Reduction = Line Avg

Scan Speed = 5



SUPRA 55VP

Serial No. = LEO SUPRA 55VP-23-02

20µm



WD = 18 mm

Detector = QBSD

EHT = 25.00 kV

Gun Vacuum = 7.22e-010 Torr

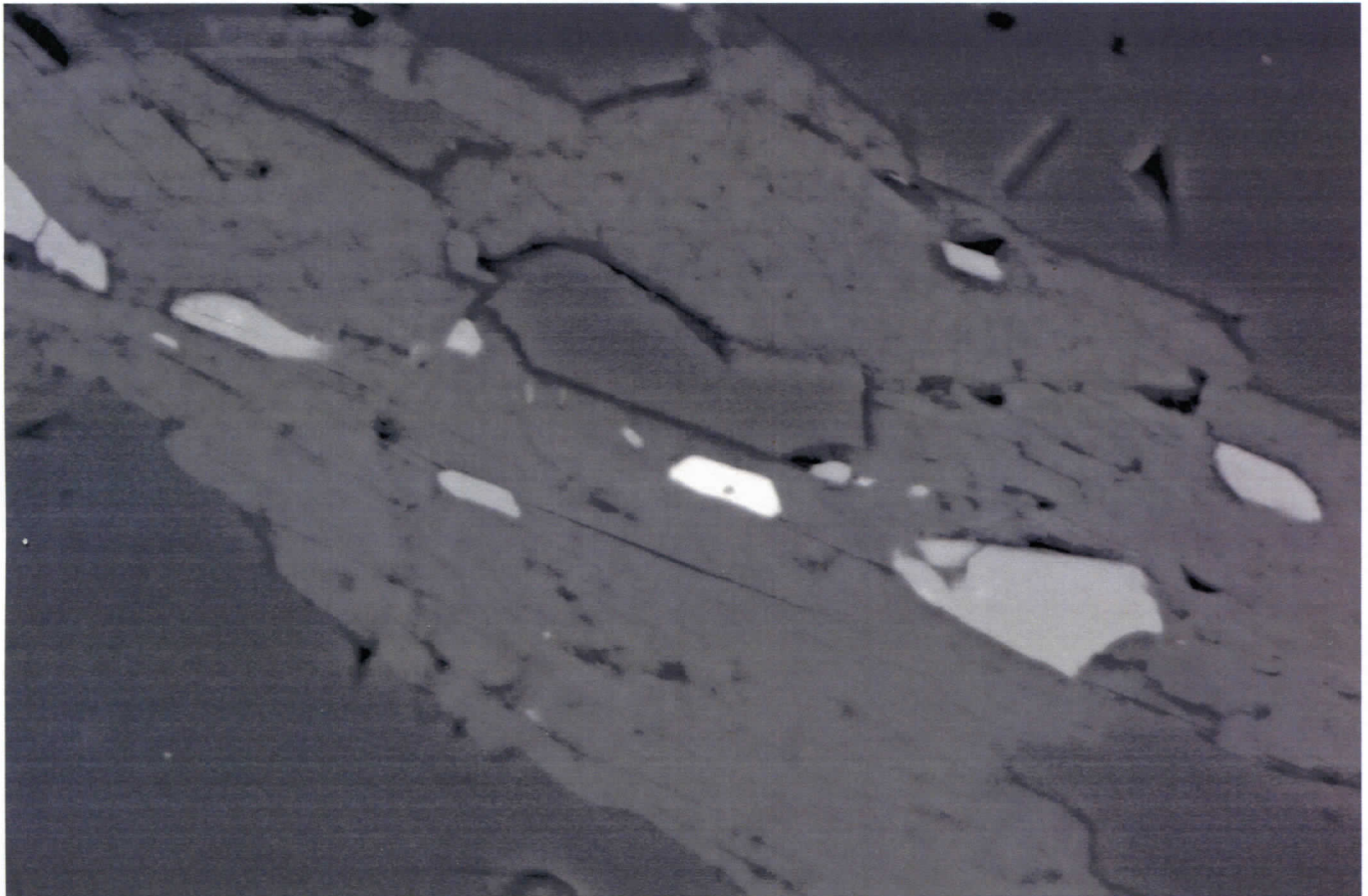
Filament Age = 1457.10 Hours

Date :23 Dec 2003 Time :10:05:57

Mag = 348 X

Noise Reduction = Line Avg

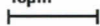
Scan Speed = 5



SUPRA 55VP

Serial No. = LEO SUPRA 55VP-23-02

10µm



WD = 18 mm

Detector = QBSD

EHT = 25.00 kV

Gun Vacuum = 7.35e-010 Torr

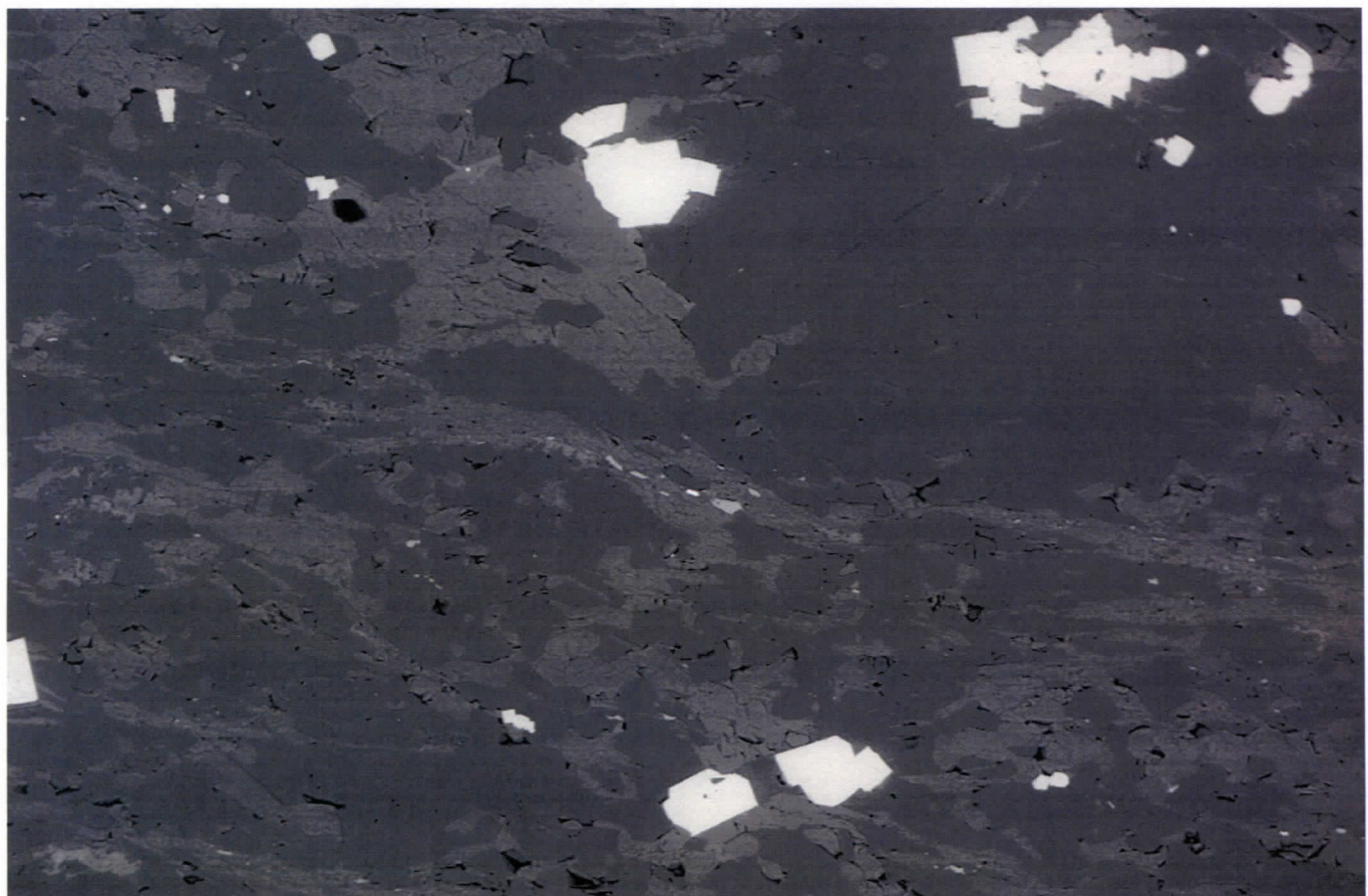
Filament Age = 1457.31 Hours

Date :23 Dec 2003 Time :10:18:53

Mag = 2.31 K X

Noise Reduction = Line Avg

Scan Speed = 5



SUPRA 55VP

Serial No. = LEO SUPRA 55VP-23-02

100µm



WD = 18 mm

Detector = QBSD

EHT = 25.00 kV

Gun Vacuum = 7.30e-010 Torr

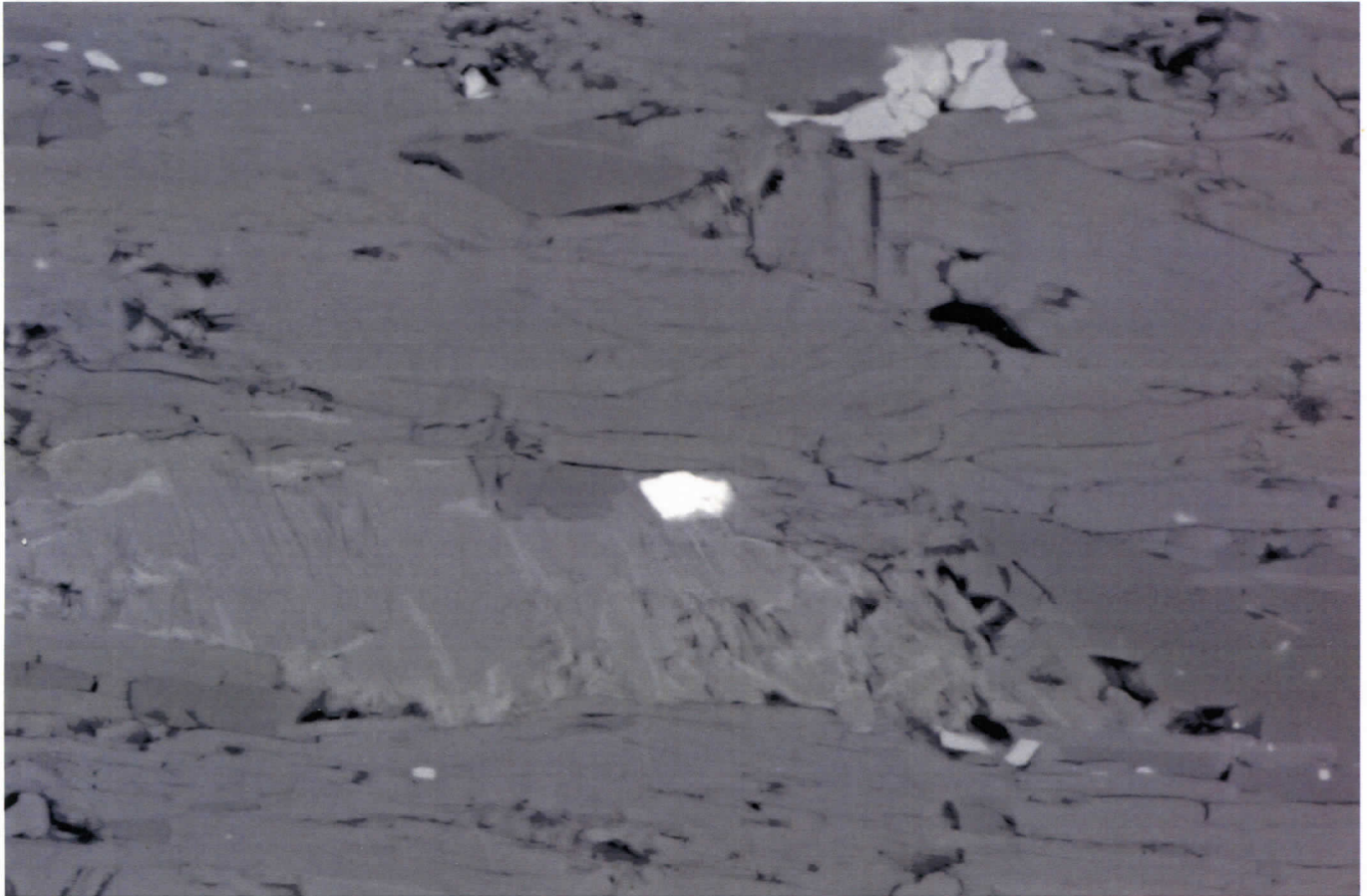
Filament Age = 1457.30 Hours

Date :23 Dec 2003 Time :10:17:27

Mag = 263 X

Noise Reduction = Line Avg

Scan Speed = 5



SUPRA 55VP

Serial No. = LEO SUPRA 55VP-23-02

10µm



WD = 18 mm

Detector = QBSD

EHT = 25.00 kV

Gun Vacuum = 7.19e-010 Torr

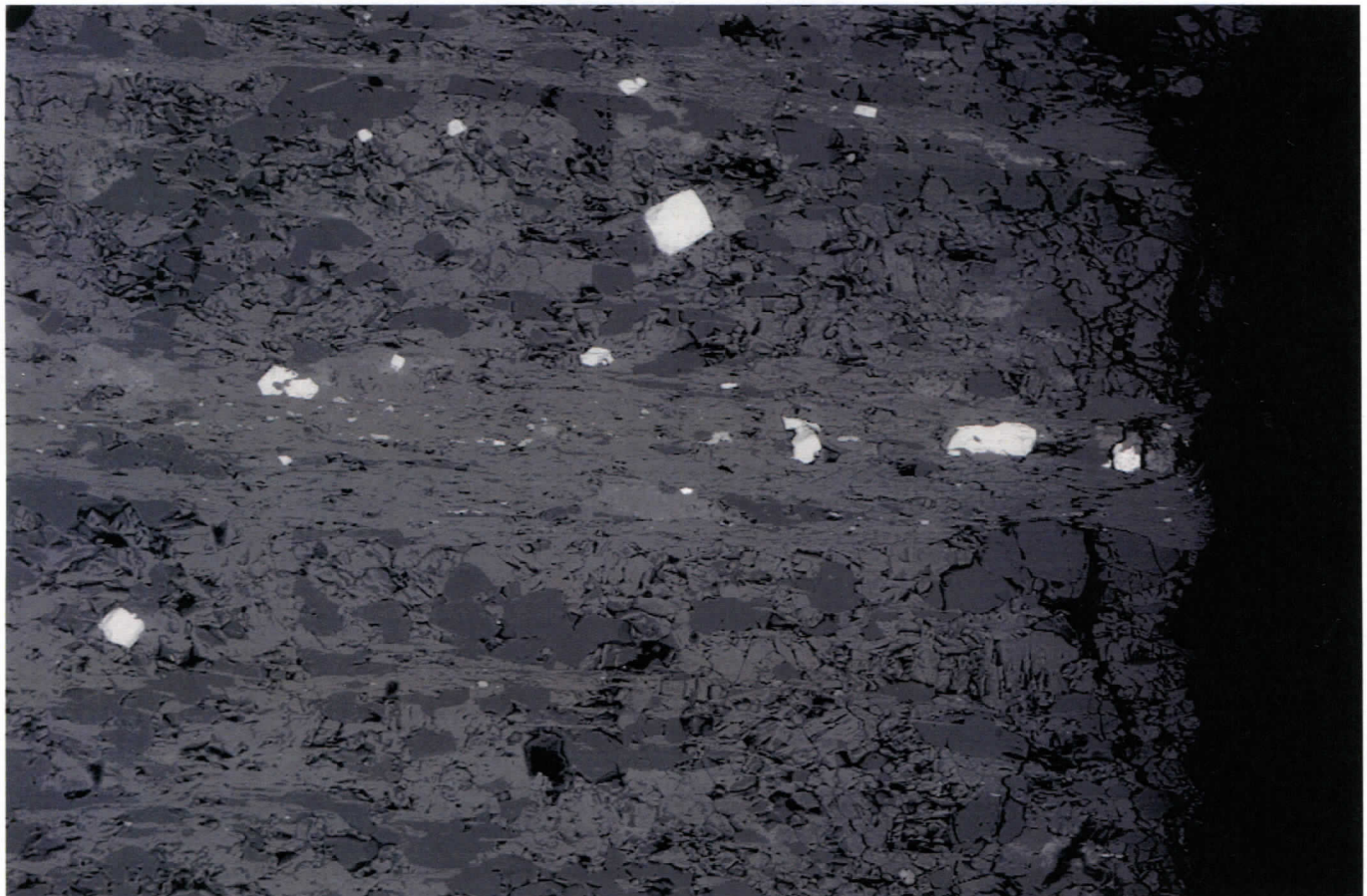
Filament Age = 1480.46 Hours

Date :24 Dec 2003 Time :10:41:45

Mag = 1.97 K X

Noise Reduction = Line Avg

Scan Speed = 5



SUPRA 55VP

Serial No. = LEO SUPRA 55VP-23-02

100µm



WD = 18 mm

Detector = QBSD

EHT = 25.00 kV

Gun Vacuum = 7.19e-010 Torr

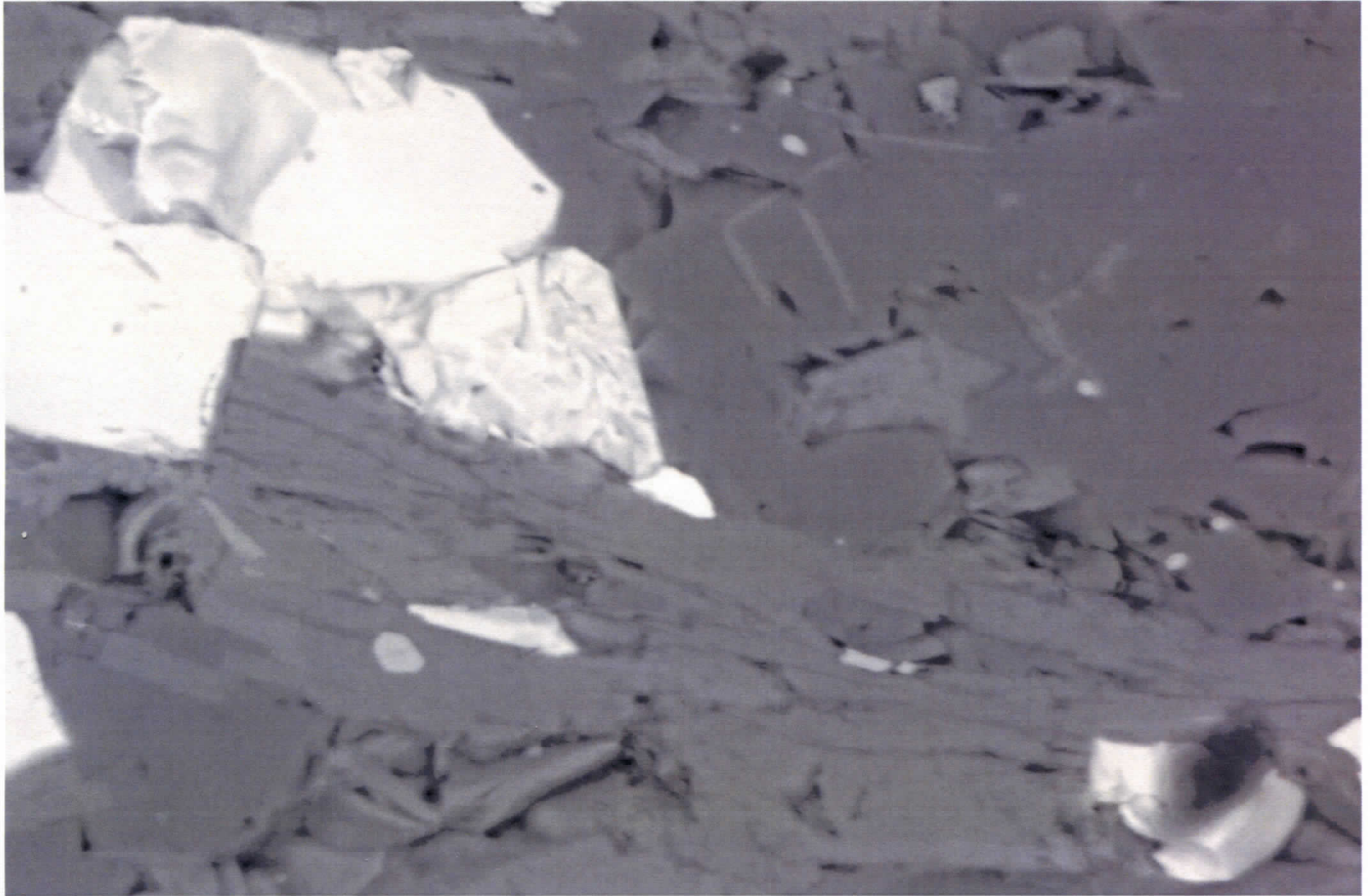
Filament Age = 1480.45 Hours

Date :24 Dec 2003 Time :10:40:15

Mag = 260 X

Noise Reduction = Line Avg

Scan Speed = 5



SUPRA 55VP

Serial No. = LEO SUPRA 55VP-23-02



10µm

WD = 18 mm

Mag = 1.82 K X

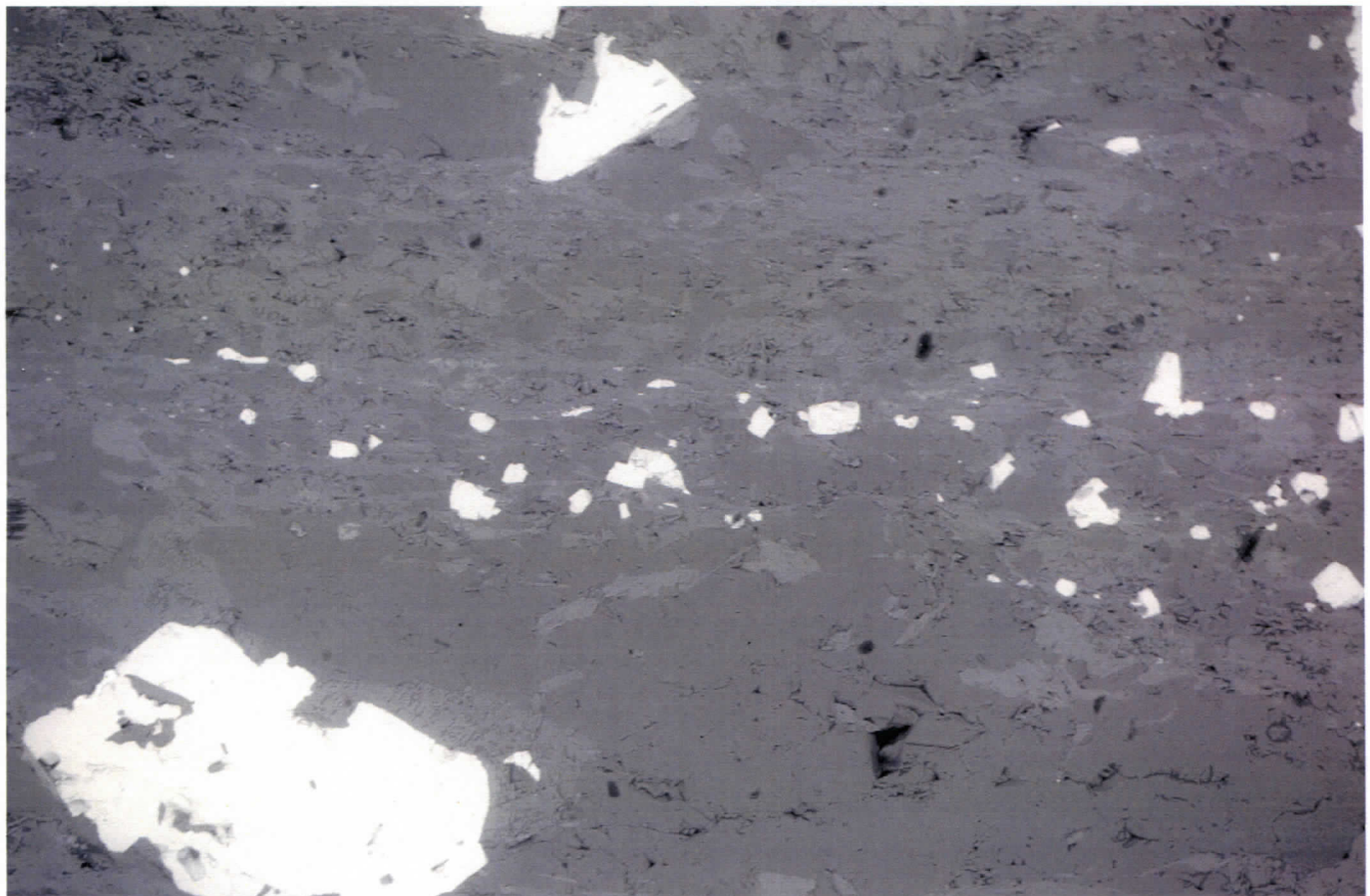
Detector = QBSD

Noise Reduction = Line Avg

EHT = 25.00 kV

Scan Speed = 5

Gun Vacuum = 7.26e-010 Torr
Filament Age = 1481.32 Hours
Date :24 Dec 2003 Time :11:32:56



SUPRA 55VP

Serial No. = LEO SUPRA 55VP-23-02



100µm

WD = 18 mm

Mag = 171 X

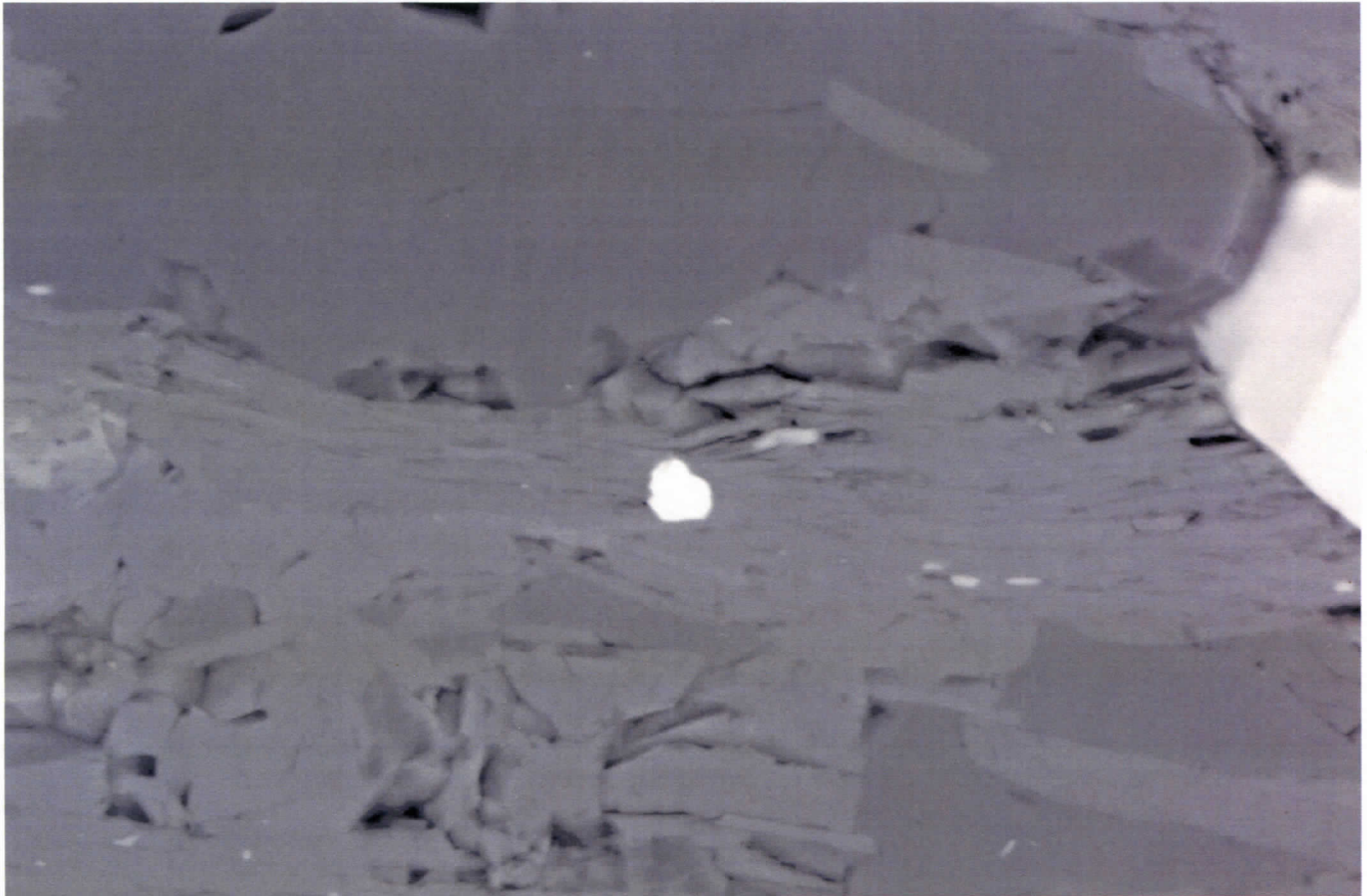
Detector = QBSD

Noise Reduction = Line Avg

EHT = 25.00 kV

Scan Speed = 5

Gun Vacuum = 7.33e-010 Torr
Filament Age = 1481.30 Hours
Date :24 Dec 2003 Time :11:31:18



SUPRA 55VP

Serial No. = LEO SUPRA 55VP-23-02



WD = 18 mm

Detector = QBSD

EHT = 25.00 kV

Gun Vacuum = 7.33e-010 Torr

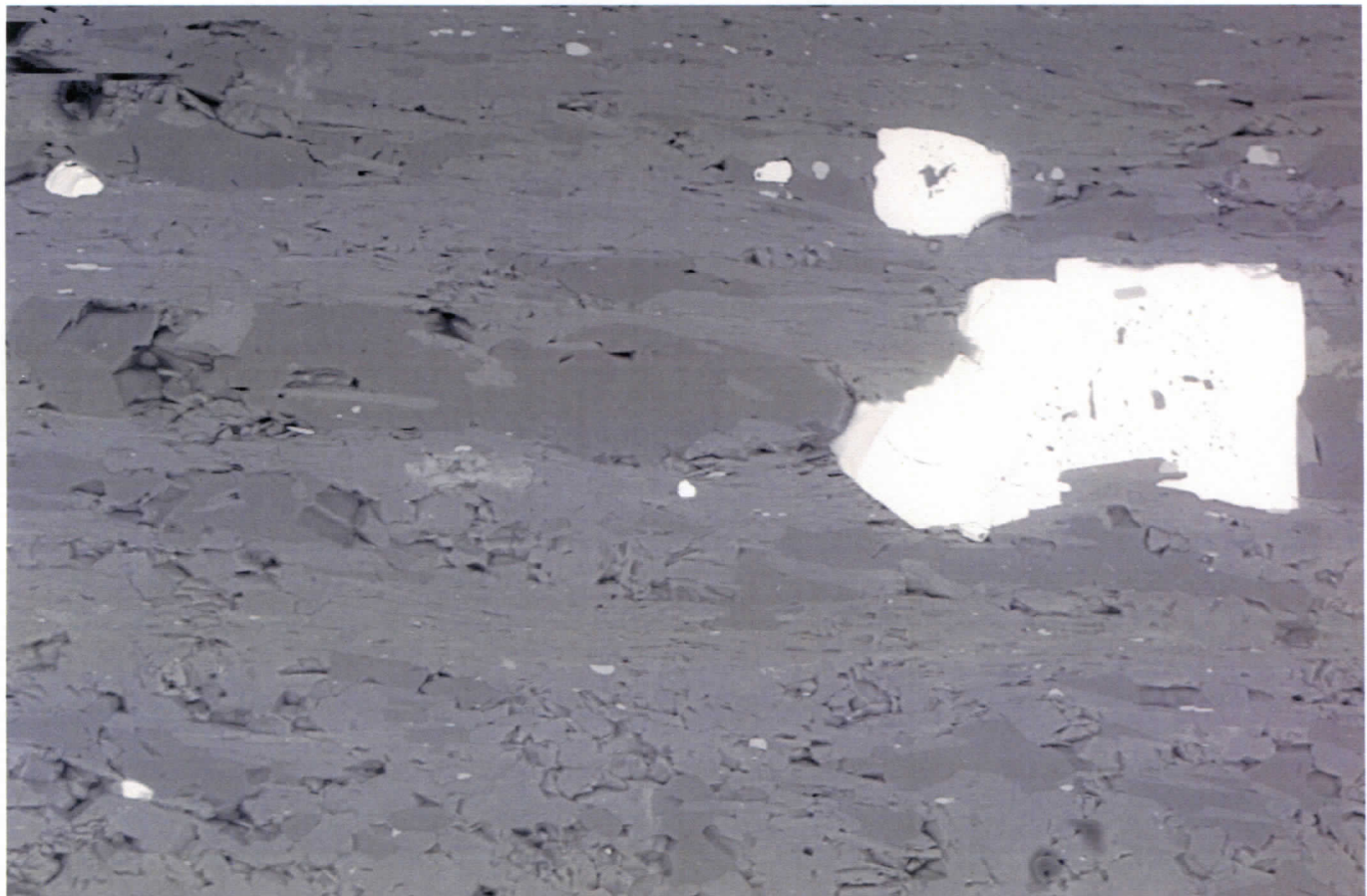
Filament Age = 1481.52 Hours

Date :24 Dec 2003 Time :11:44:30

Mag = 2.12 K X

Noise Reduction = Line Avg

Scan Speed = 5



SUPRA 55VP

Serial No. = LEO SUPRA 55VP-23-02



WD = 18 mm

Detector = QBSD

EHT = 25.00 kV

Gun Vacuum = 7.26e-010 Torr

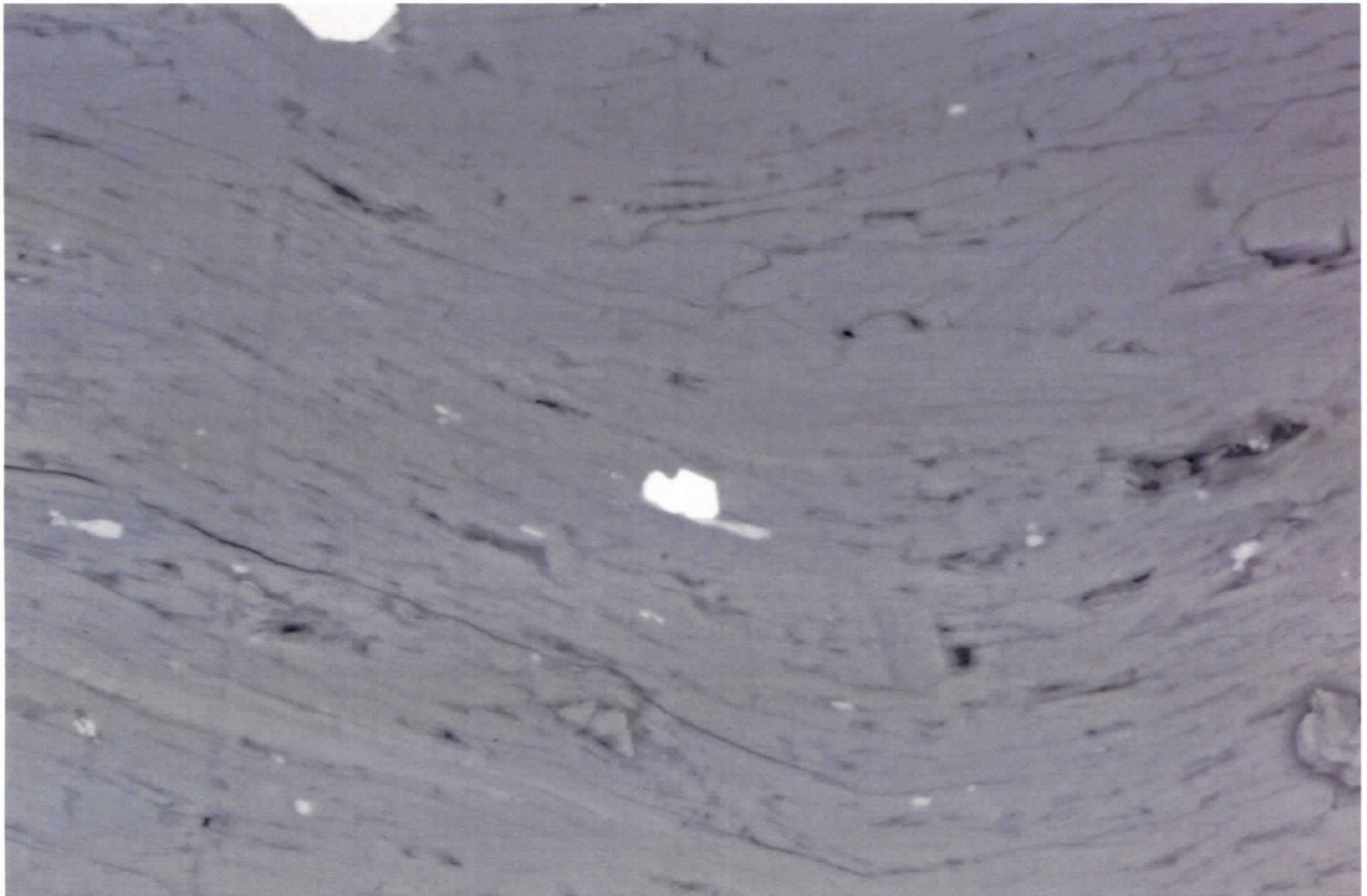
Filament Age = 1481.48 Hours

Date :24 Dec 2003 Time :11:43:03

Mag = 591 X

Noise Reduction = Line Avg

Scan Speed = 5



SUPRA 55VP

Serial No. = LEO SUPRA 55VP-23-02

10µm

WD = 18 mm

Detector = QBSD

EHT = 25.00 kV

Gun Vacuum = 7.08e-010 Torr

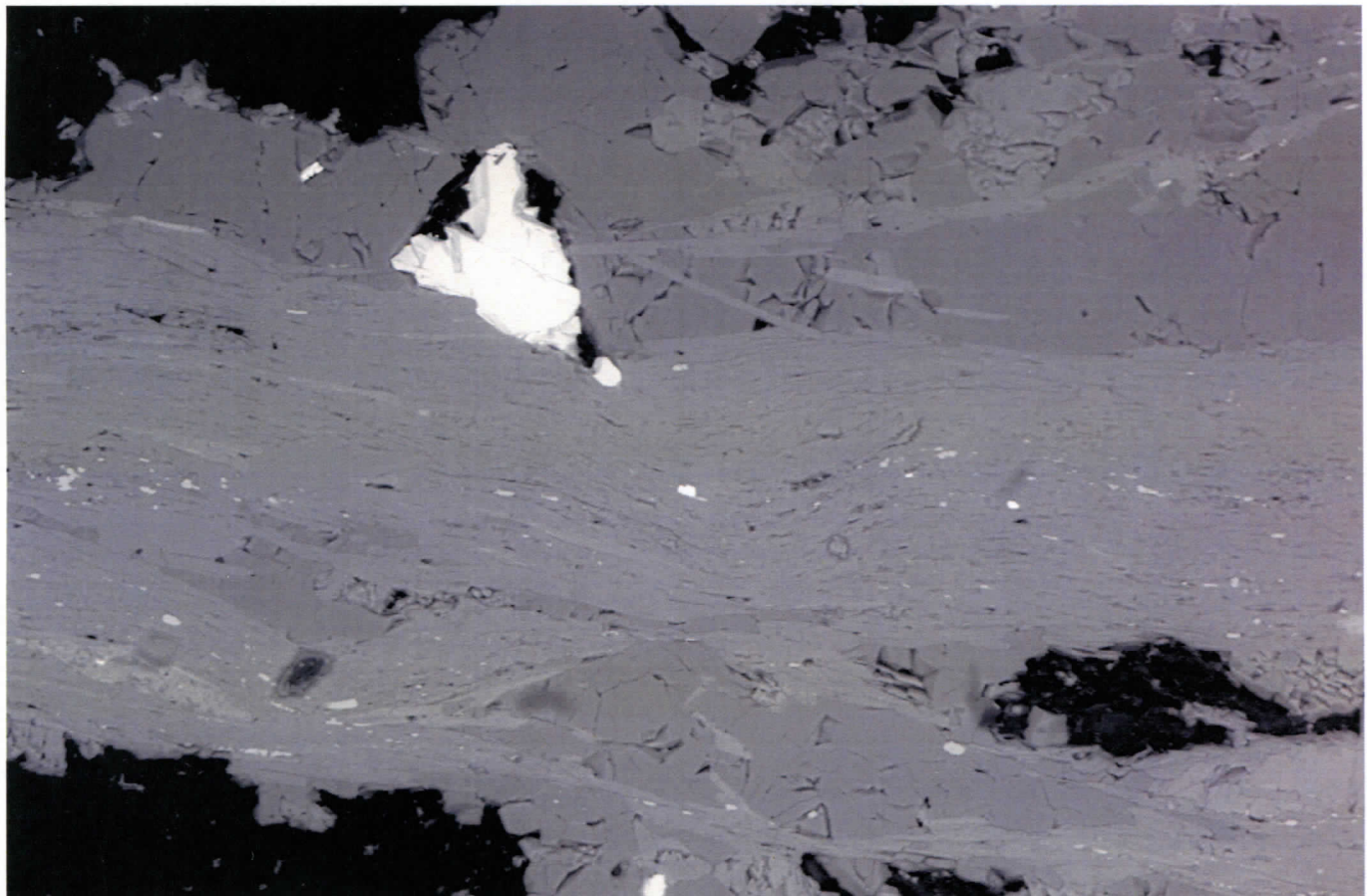
Filament Age = 1482.60 Hours

Date :24 Dec 2003 Time :12:49:33

Mag = 2.19 K X

Noise Reduction = Line Avg

Scan Speed = 5



SUPRA 55VP

Serial No. = LEO SUPRA 55VP-23-02

20µm

WD = 18 mm

Detector = QBSD

EHT = 25.00 kV

Gun Vacuum = 7.11e-010 Torr

Filament Age = 1482.57 Hours

Date :24 Dec 2003 Time :12:48:06

Mag = 506 X

Noise Reduction = Line Avg

Scan Speed = 5