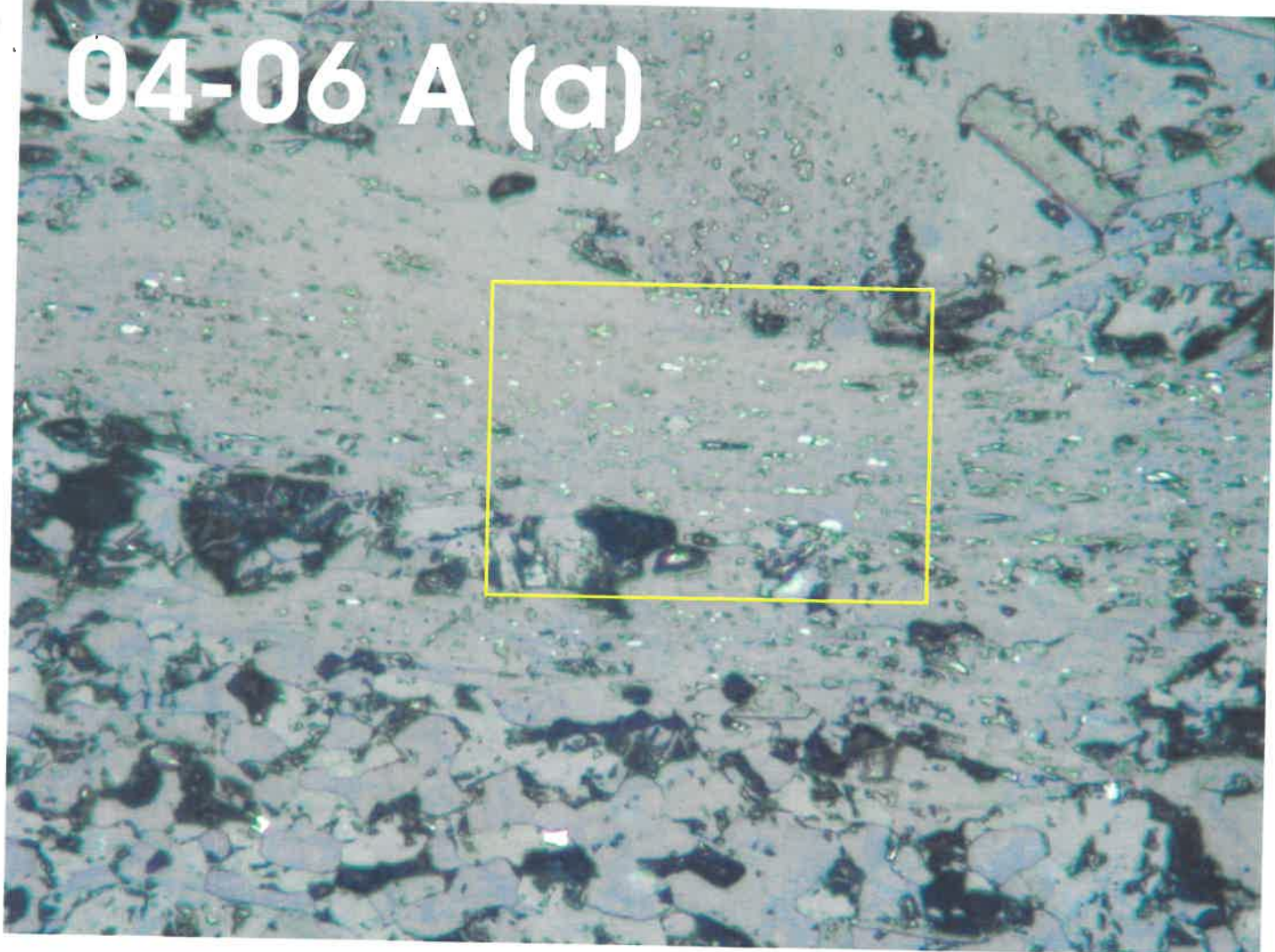
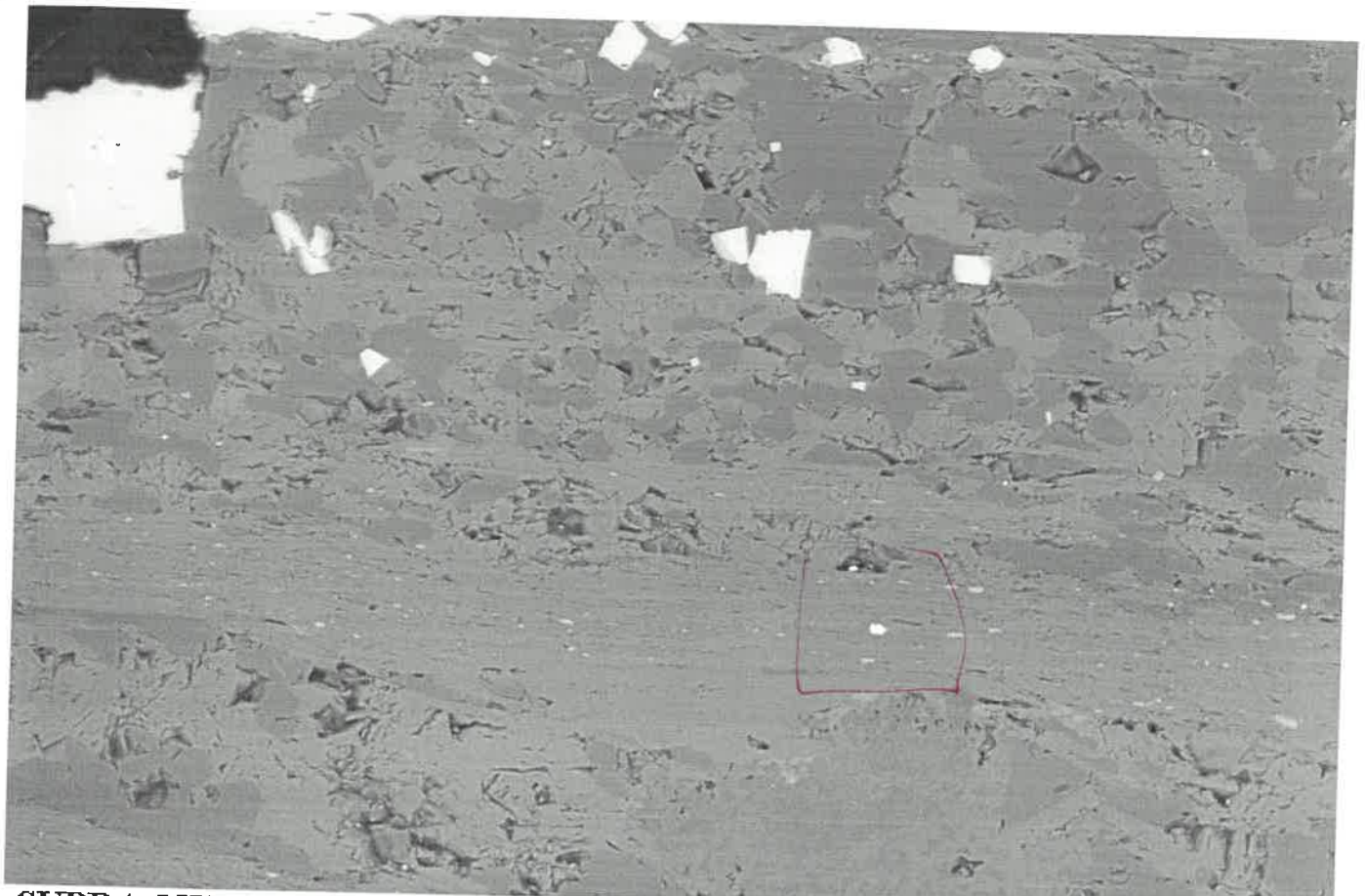


04-06 A (a)





SUPRA 55VP

Serial No. = LEO SUPRA 55VP-23-02

30µm

WD = 12 mm

Detector = QBSD

EHT = 25.00 kV

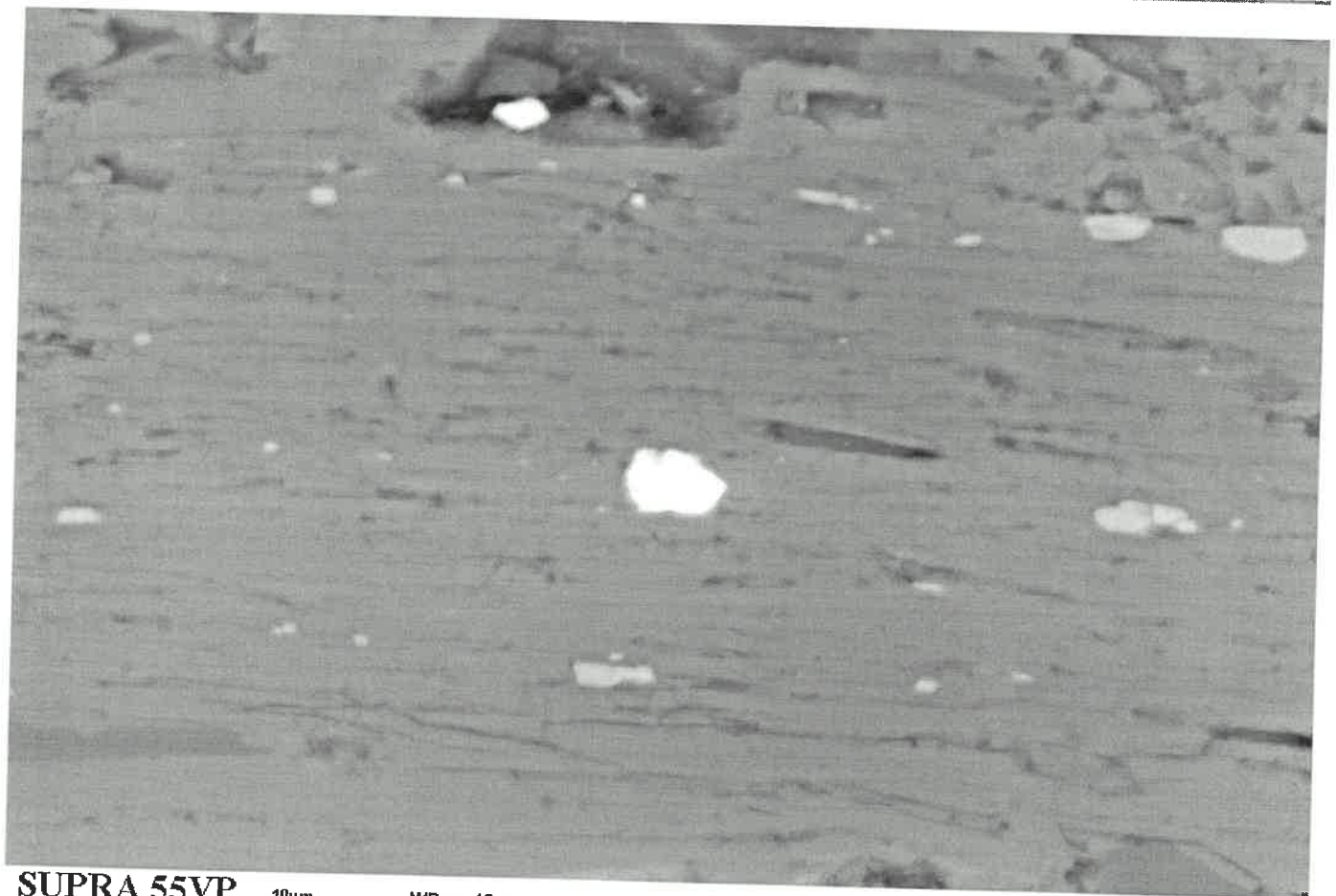
Gun Vacuum = 4.18e-010 Torr

Mag = 343 X

Noise Reduction = Line Avg

Scan Speed = 5

Filament Age = 2026.11 Hours
Date : 19 Jan 2004 Time : 11:16:29



SUPRA 55VP

Serial No. = LEO SUPRA 55VP-23-02

10µm

WD = 12 mm

Detector = QBSD

EHT = 25.00 kV

Gun Vacuum = 4.21e-010 Torr

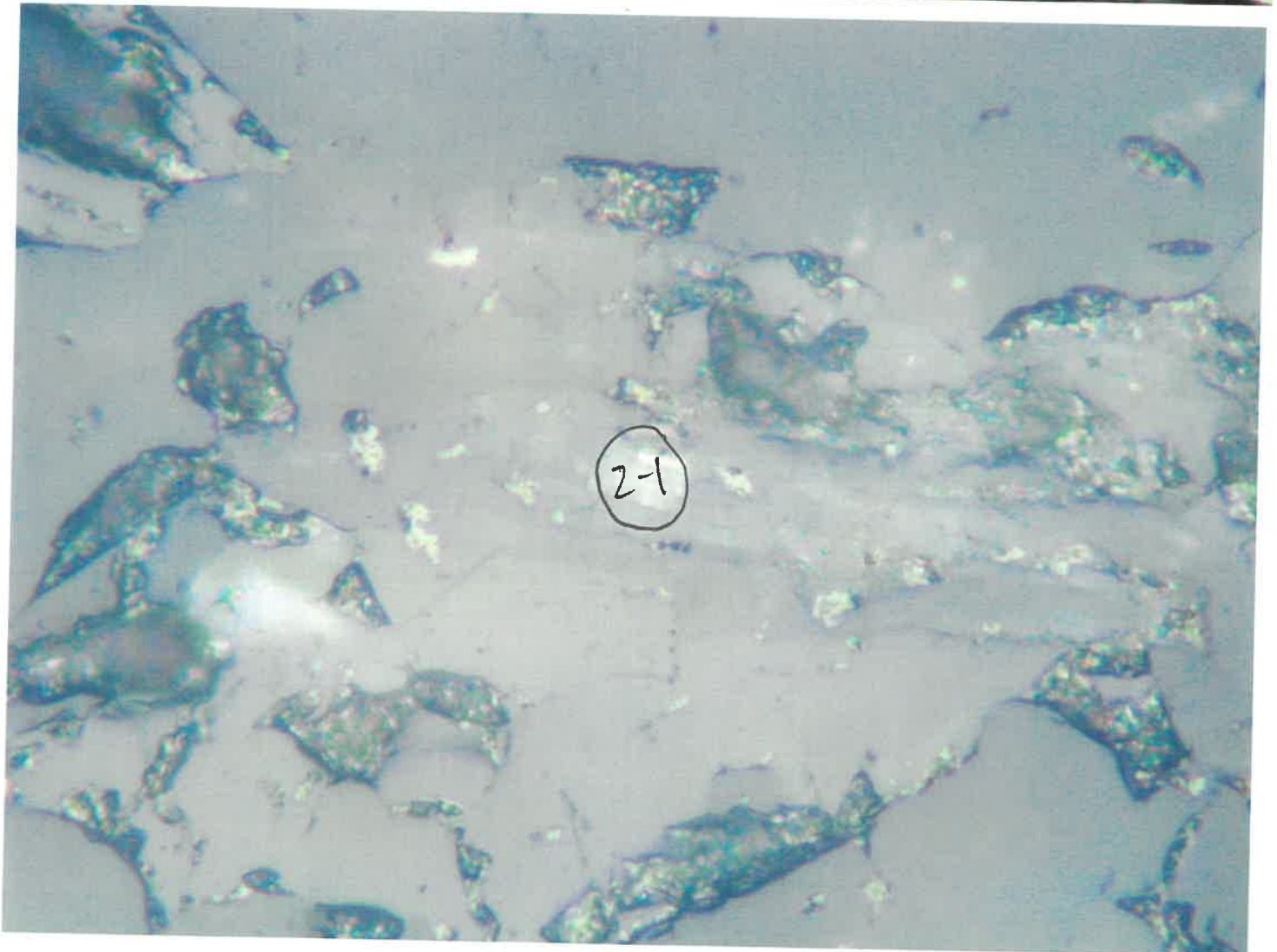
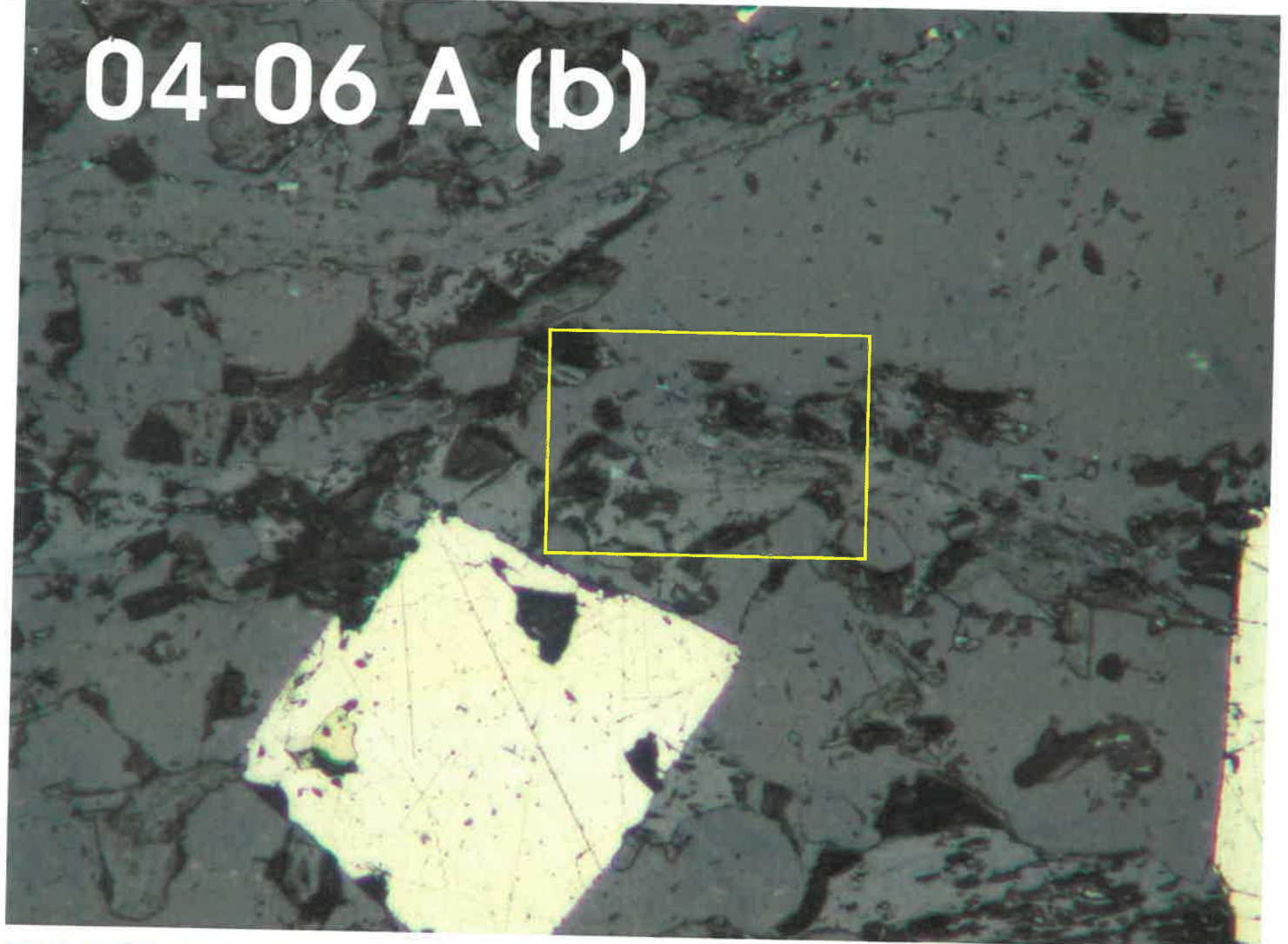
Mag = 2.14 K X

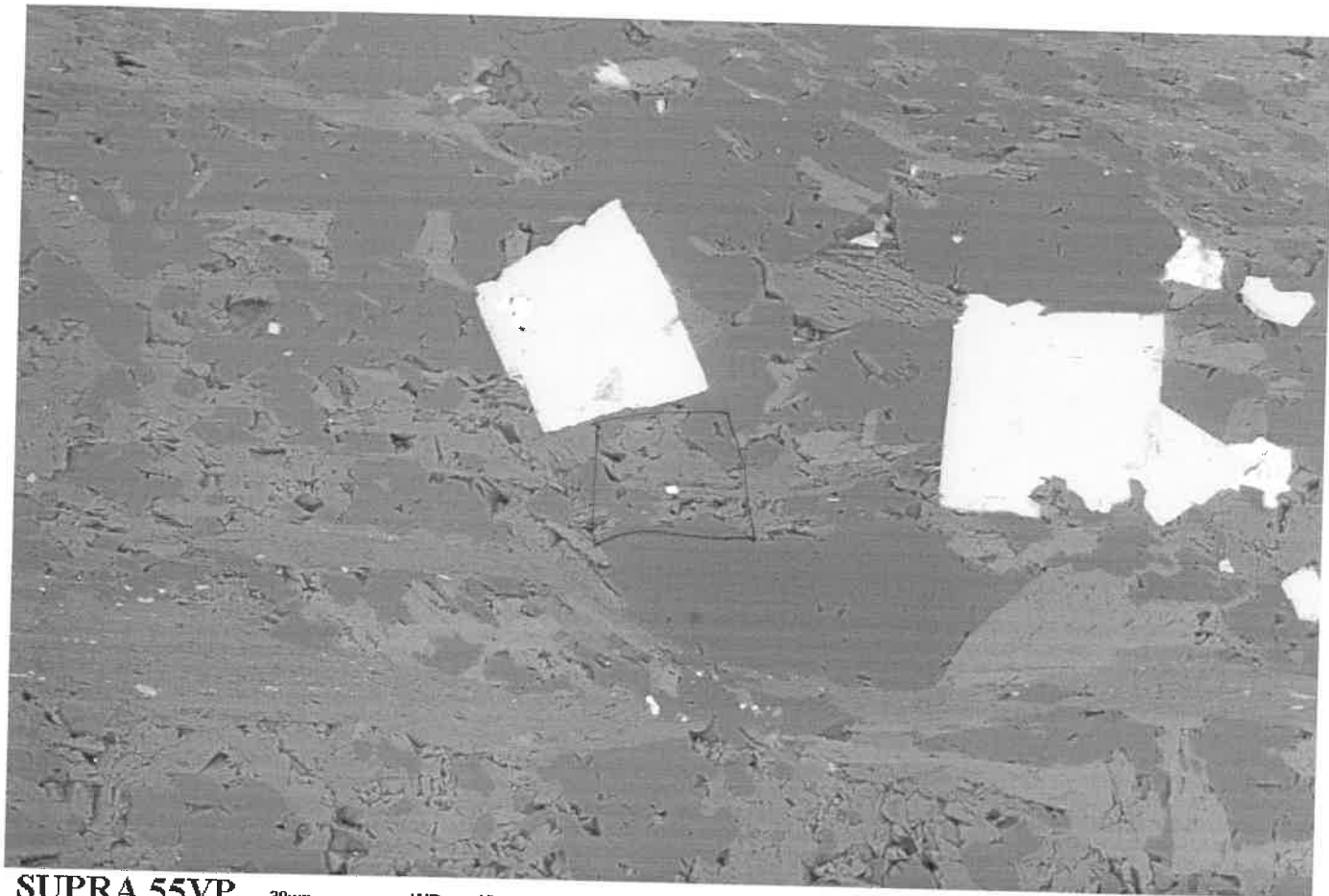
Noise Reduction = Line Avg

Scan Speed = 5

Filament Age = 2026.14 Hours
Date : 19 Jan 2004 Time : 11:18:01

04-06 A (b)





SUPRA 55VP

Serial No. = LEO SUPRA 55VP-23-02

30µm

WD = 12 mm

Detector = QBSD

EHT = 25.00 kV

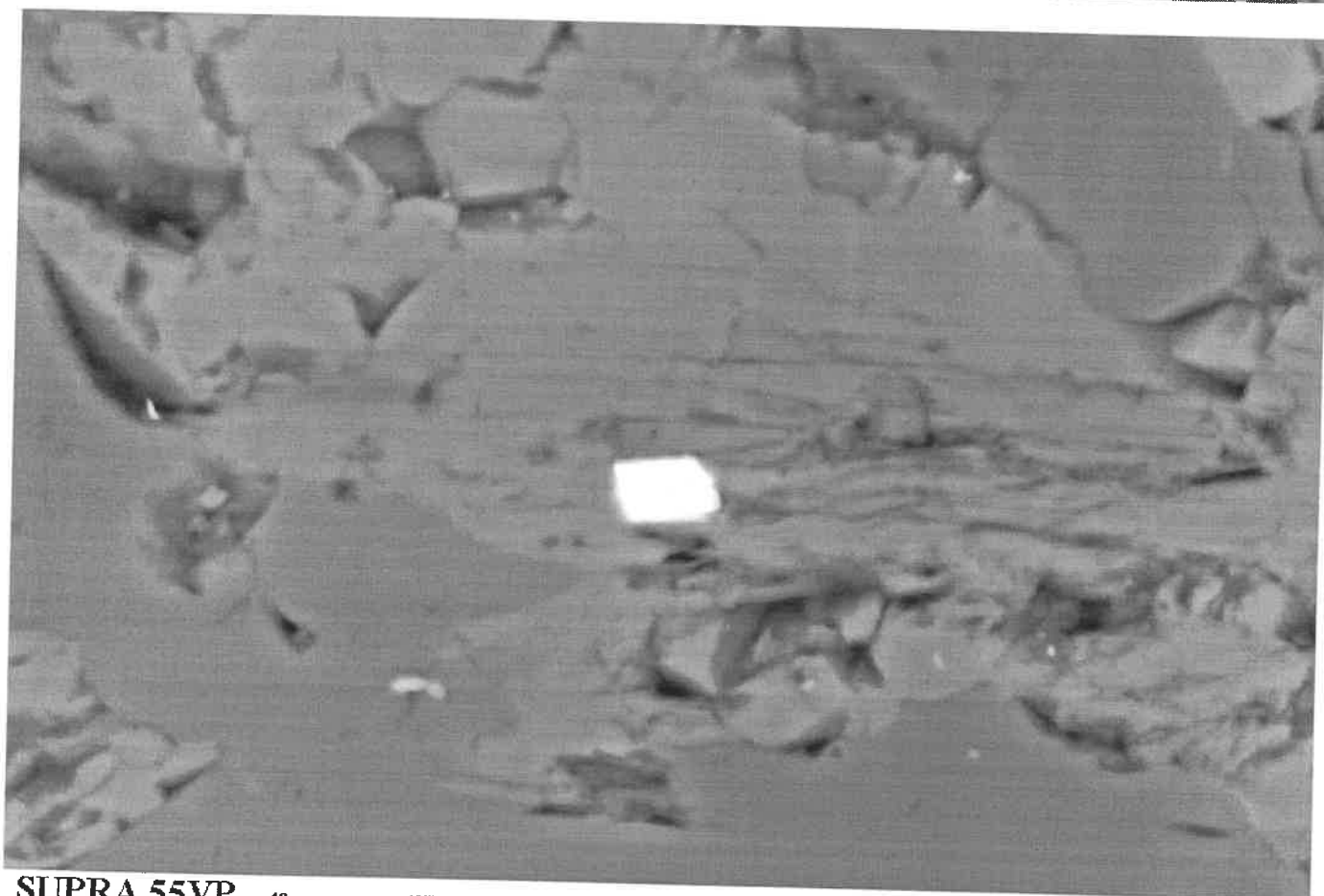
Gun Vacuum = 4.23e-010 Torr

Mag = 303 X

Noise Reduction = Line Avg

Scan Speed = 5

Filament Age = 2026.18 Hours
Date :19 Jan 2004 Time :11:20:04



SUPRA 55VP

Serial No. = LEO SUPRA 55VP-23-02

10µm

WD = 12 mm

Detector = QBSD

EHT = 25.00 kV

Gun Vacuum = 4.22e-010 Torr

Mag = 2.66 K X

Noise Reduction = Line Avg

Scan Speed = 5

Filament Age = 2026.21 Hours
Date :19 Jan 2004 Time :11:21:38