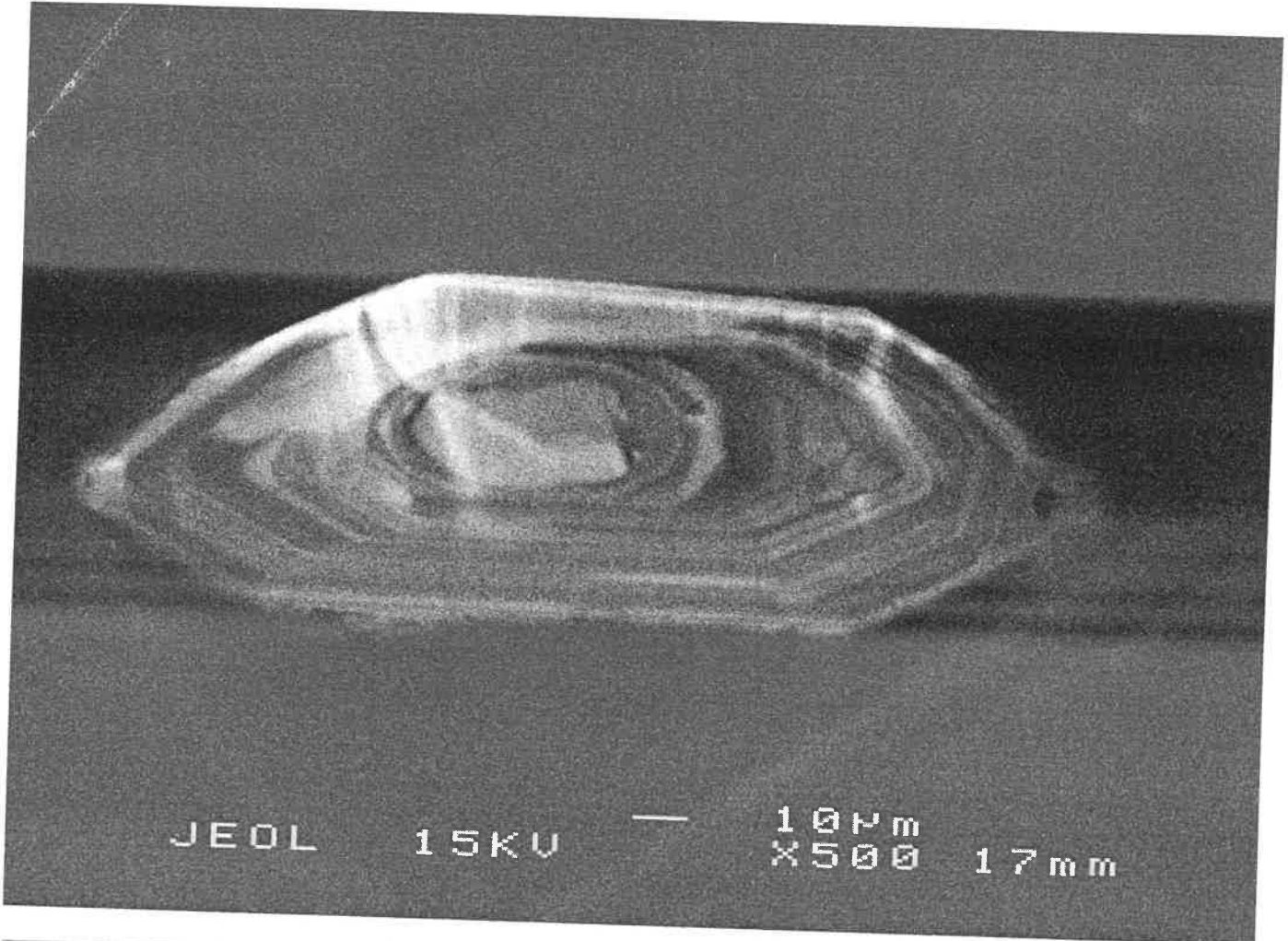
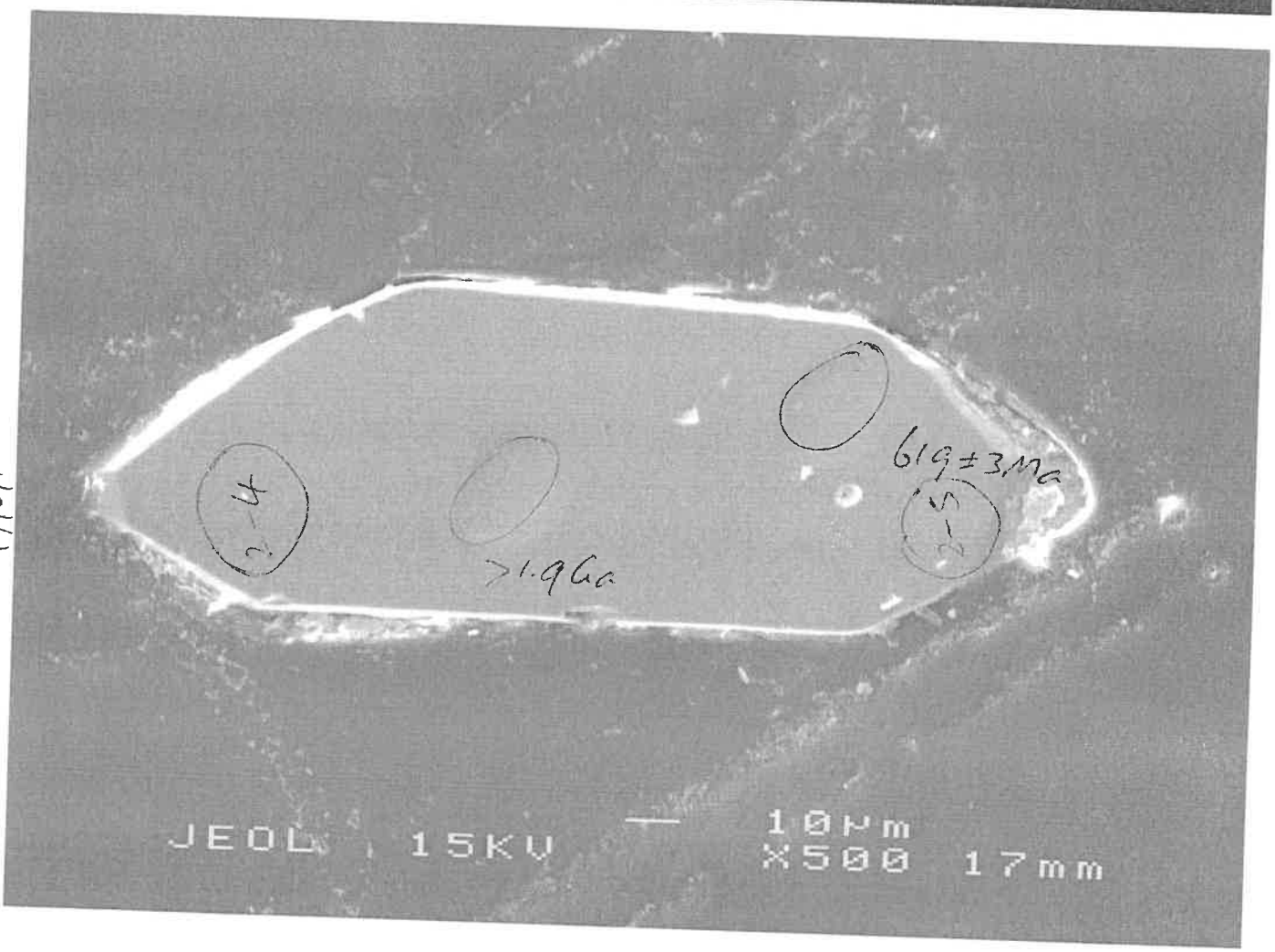


04-116B q2 = #2-3

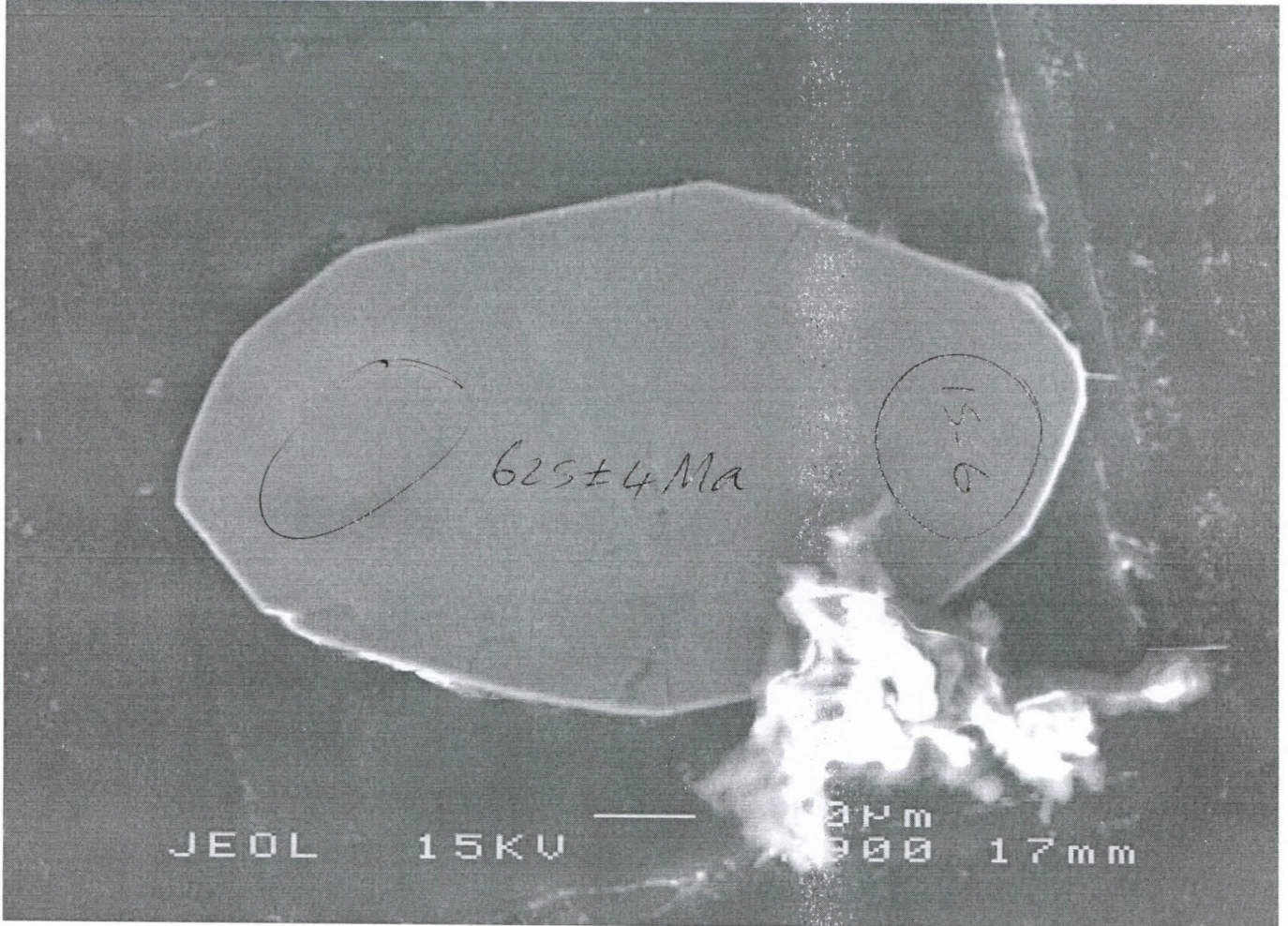
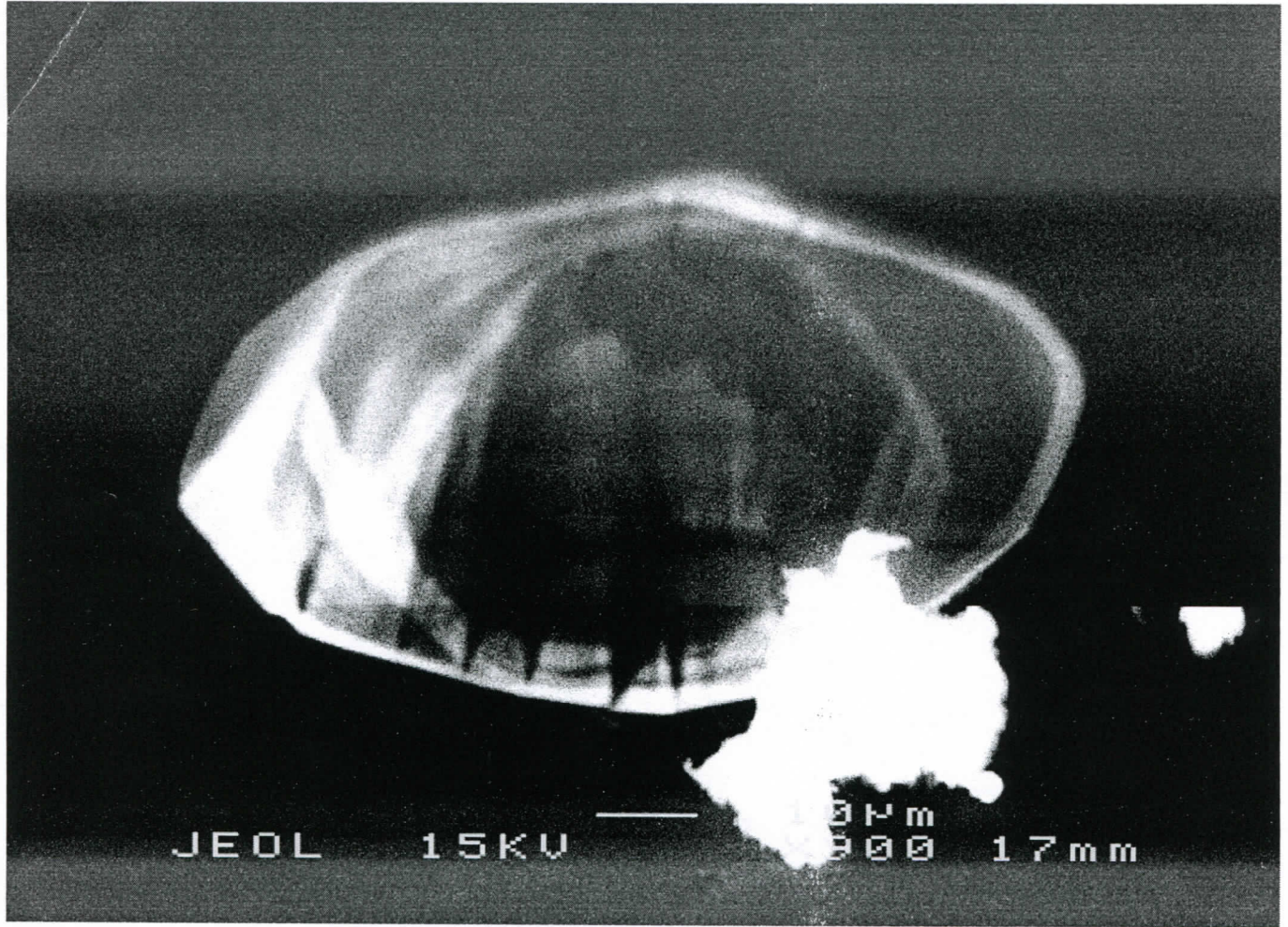


17/6/10

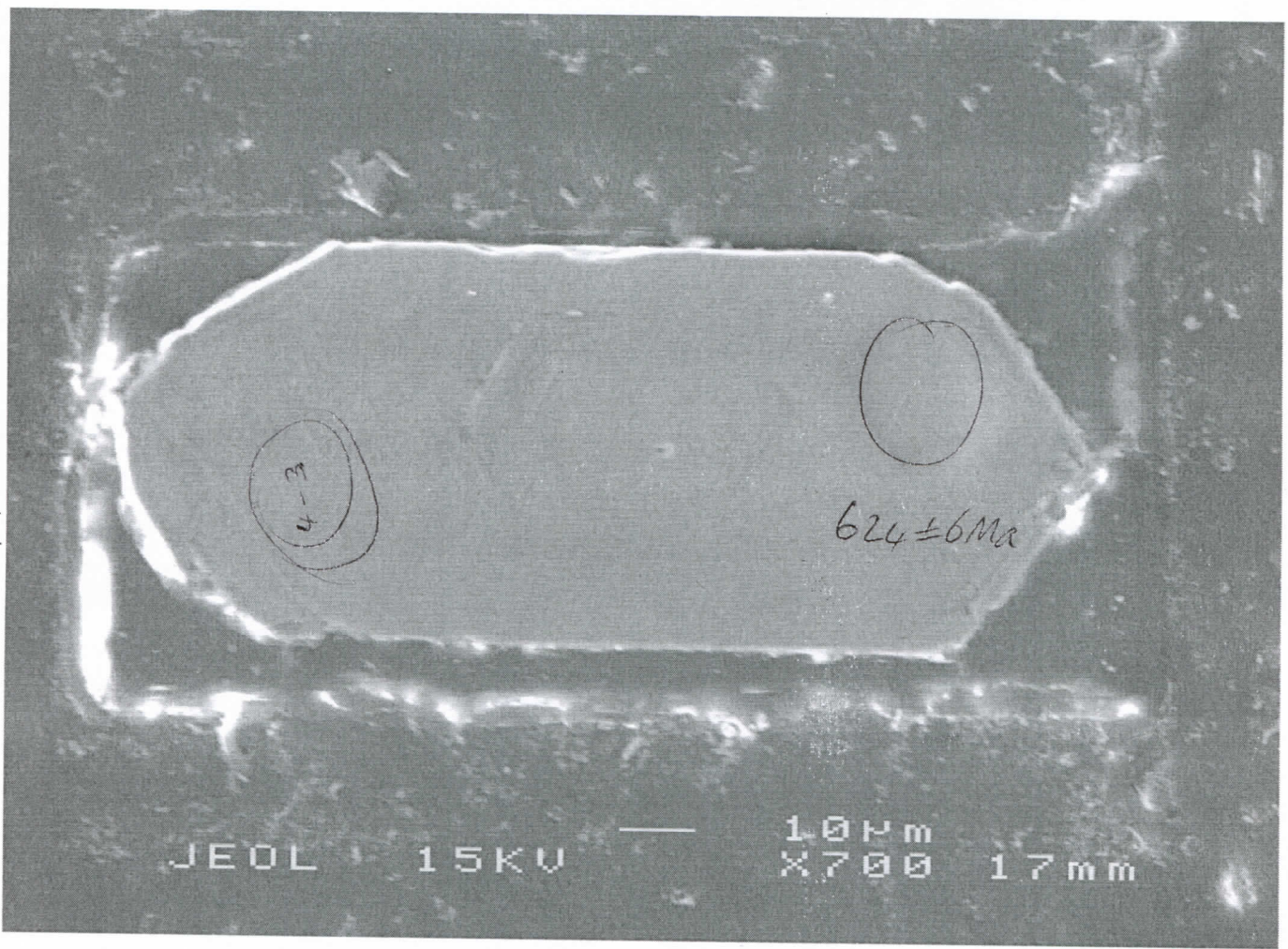
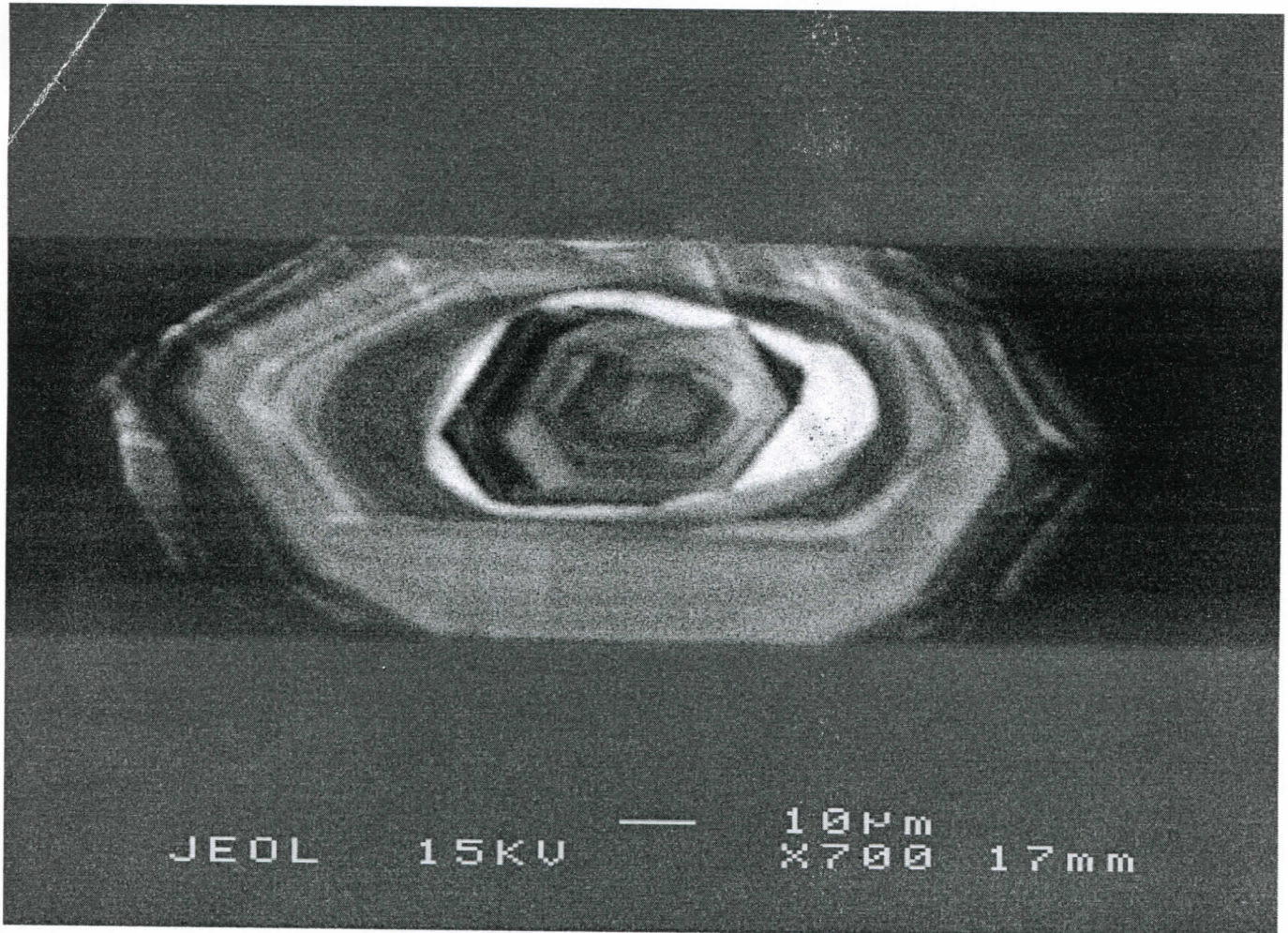


POST-SK

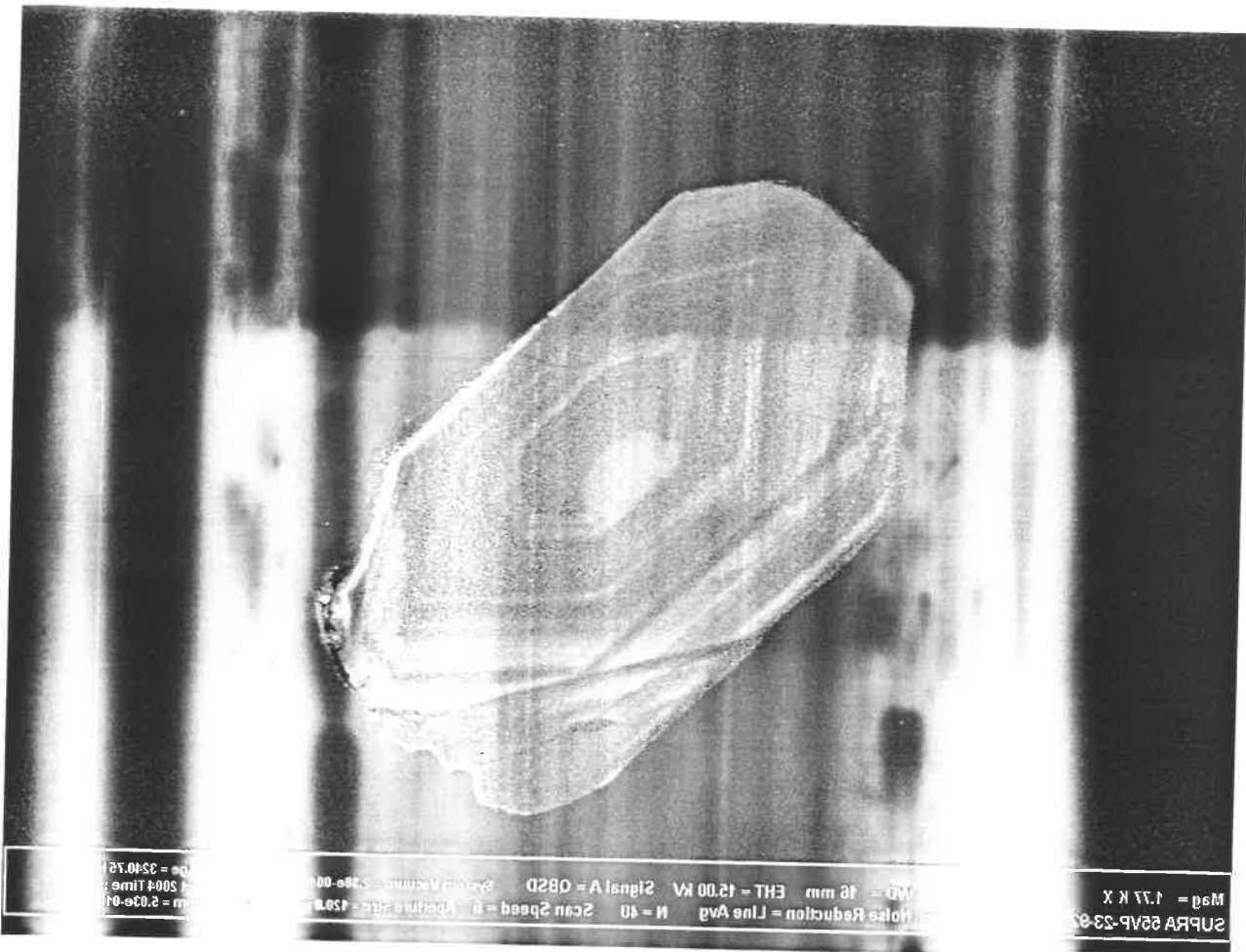
04-116 B 90 = #15-4



04-116B a1 = #4-2



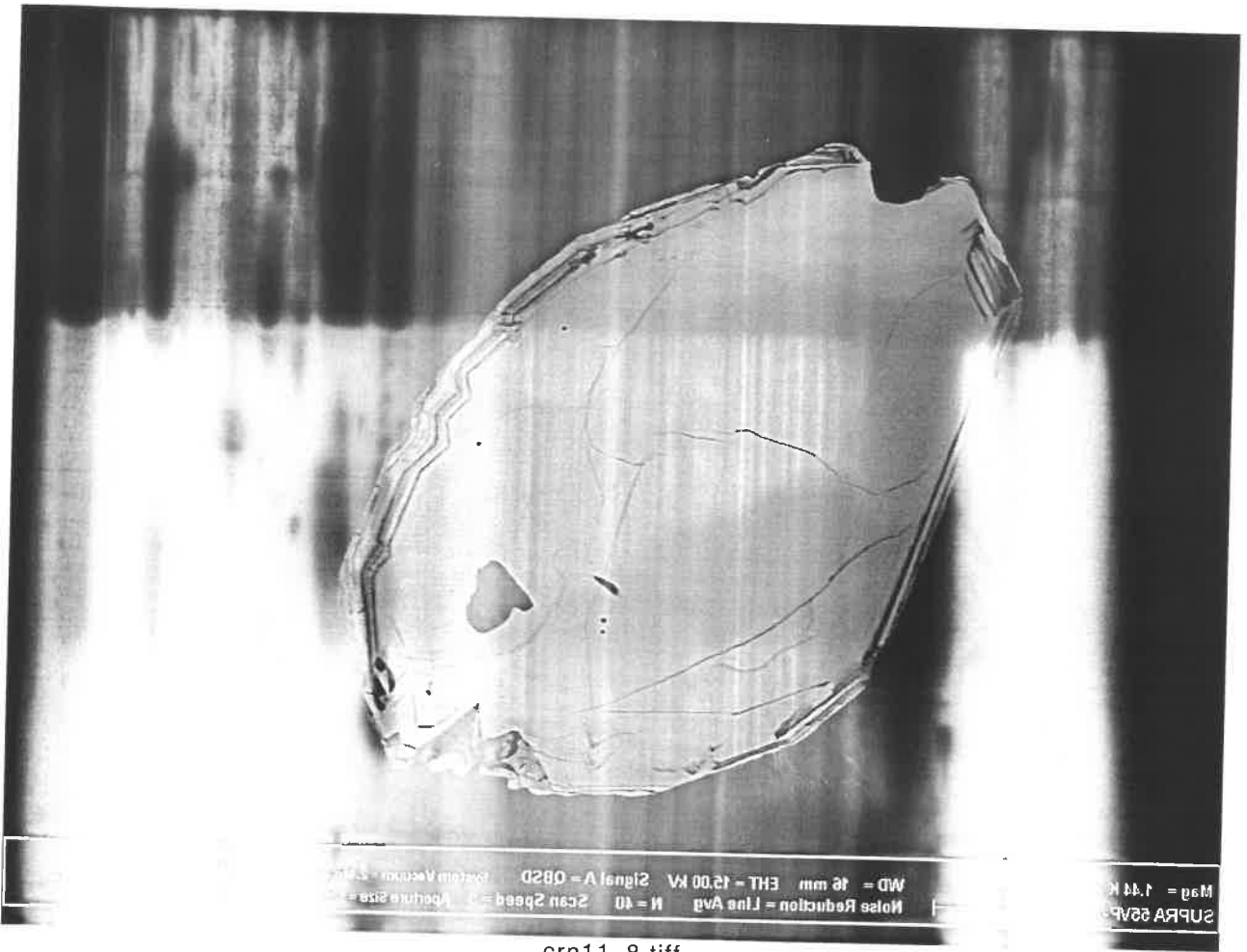
②



crn11_6.tiff
1024x768, 8bit, 768.2KB



crn11_7.tiff
1024x768, 8bit, 768.2KB



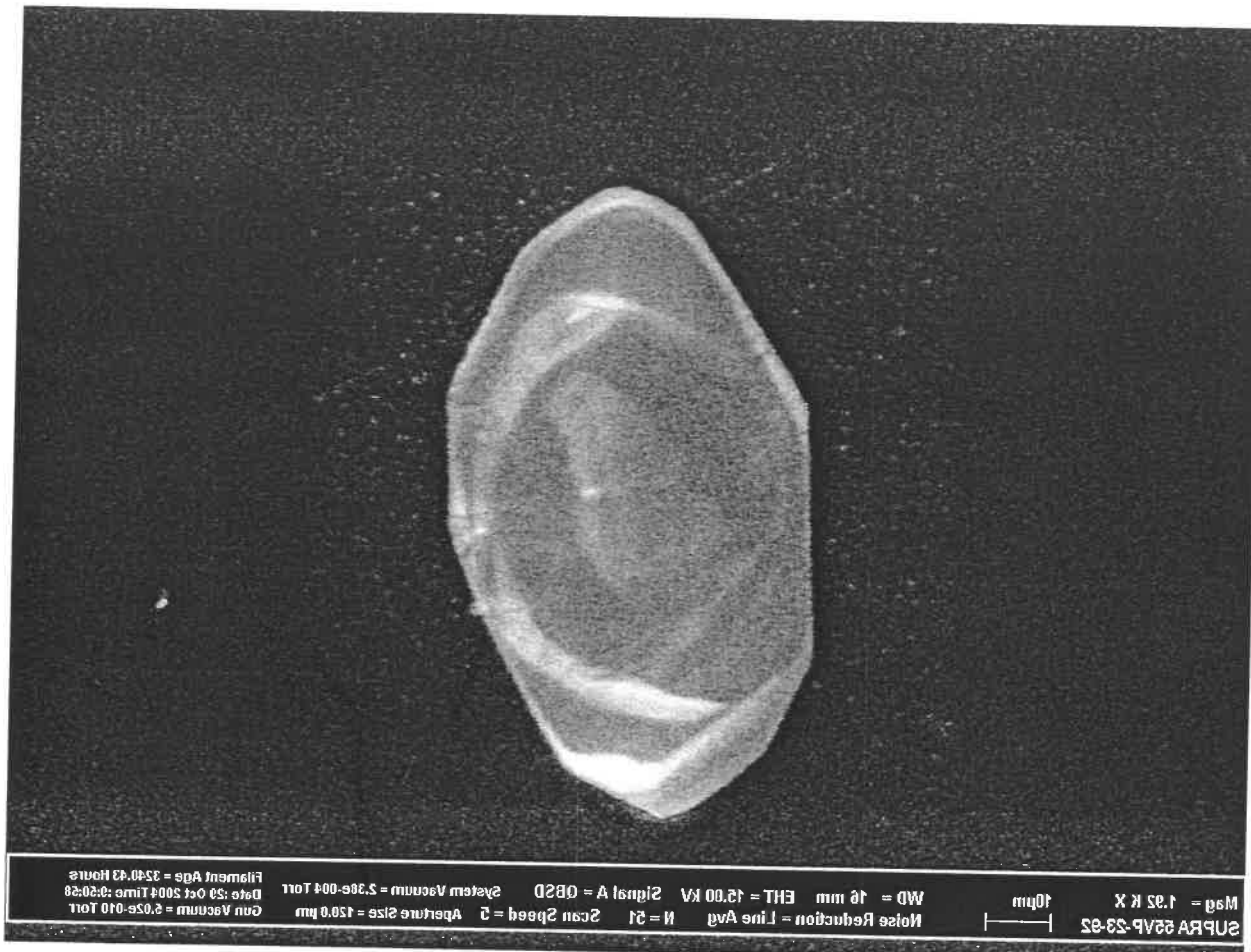
Magn = 1.44 K
SUPRA 55VP
WD = 16 mm EHT = 15.00 kV Signal A = 082D
Noise Reduction = Line Avg N = 40 Scan Speed = 1 Aperture size = 5.0

crn11_8.tiff
1024x768, 8bit, 768.2KB

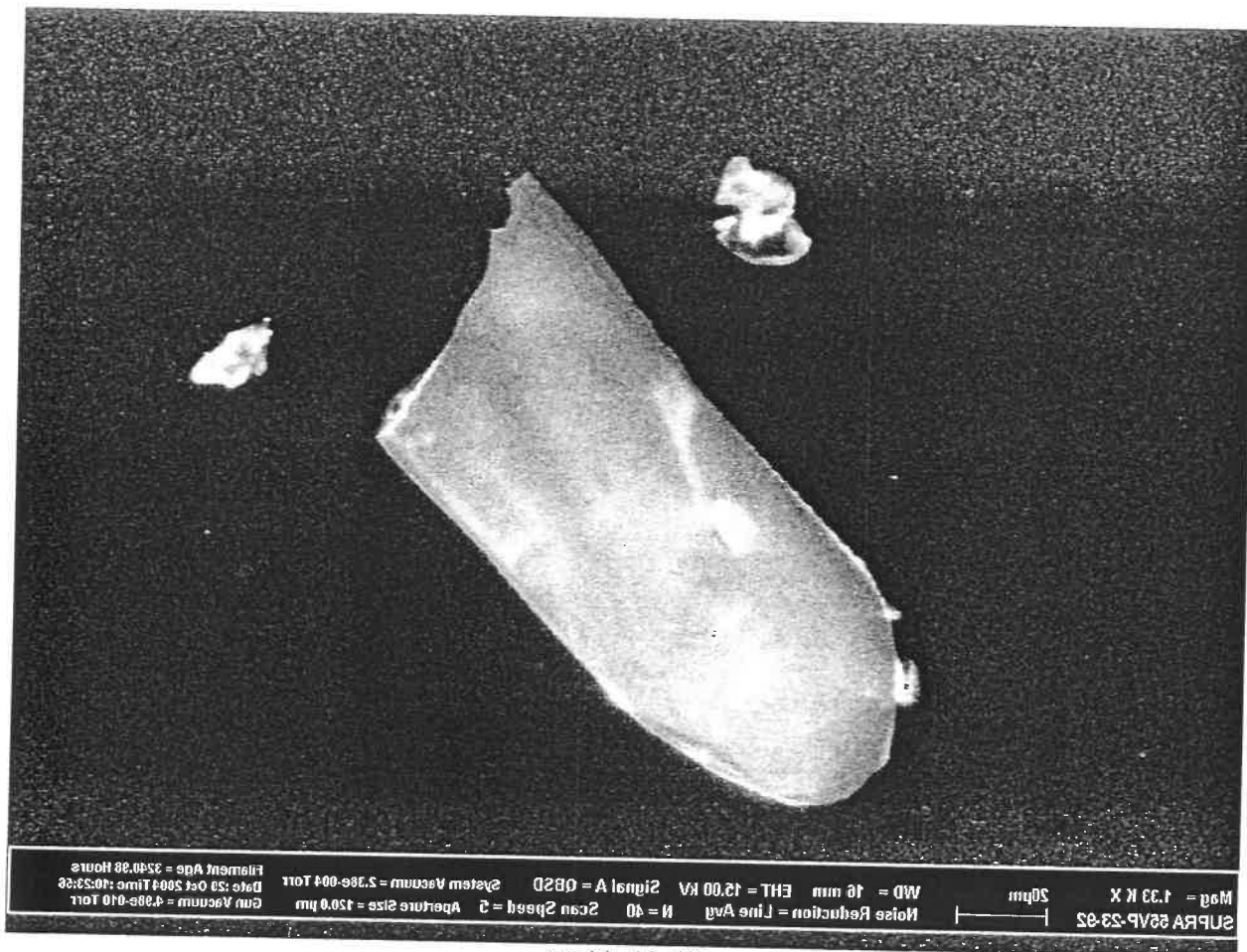


Magn = 1.5
SUPRA 55VP
WD = 16 mm EHT = 15.00 kV Signal A = 082D
Noise Reduction = Line Avg N = 40 Scan Speed = 1 Aperture size = 5.0

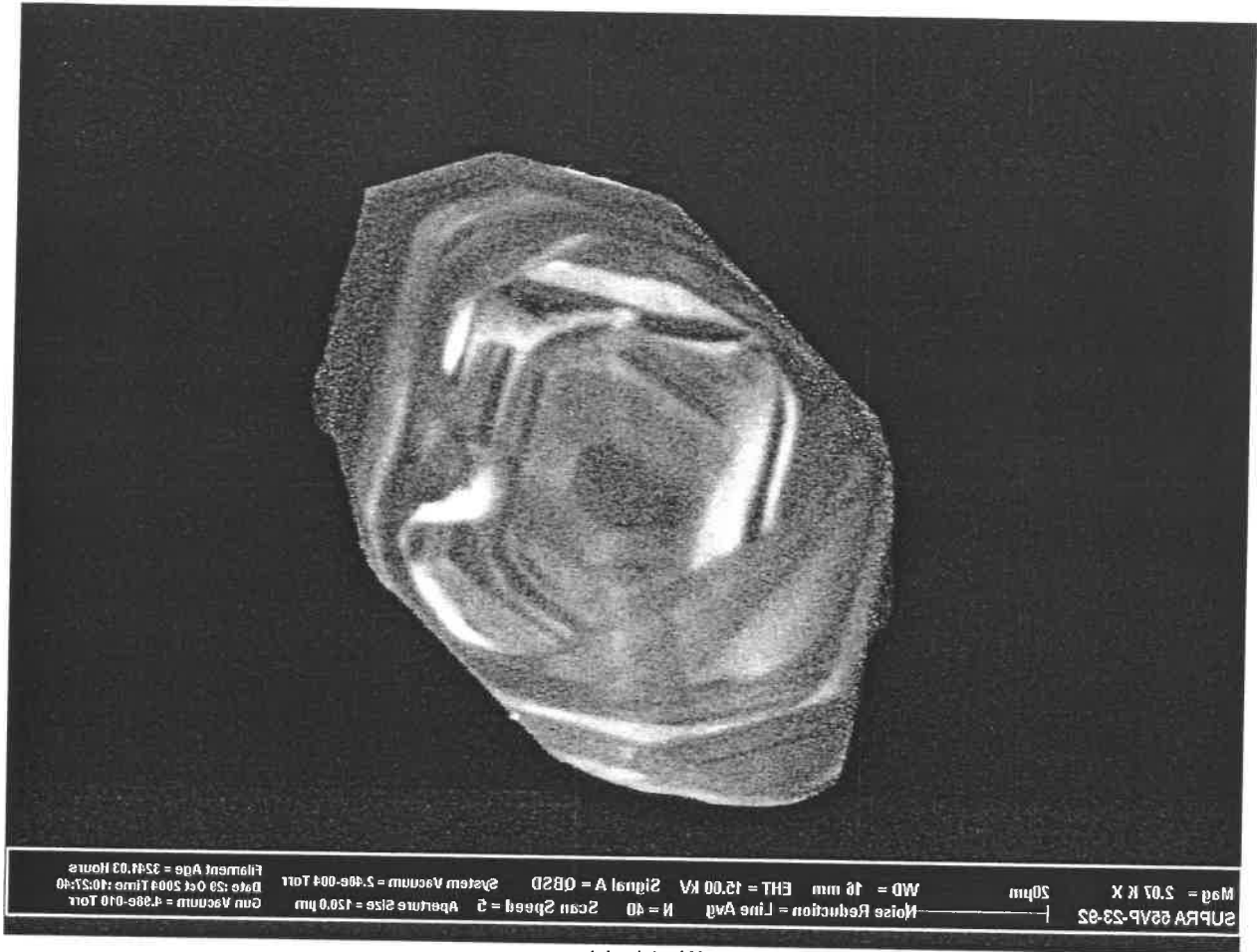
crn11_9.tiff
1024x768, 8bit, 768.2KB



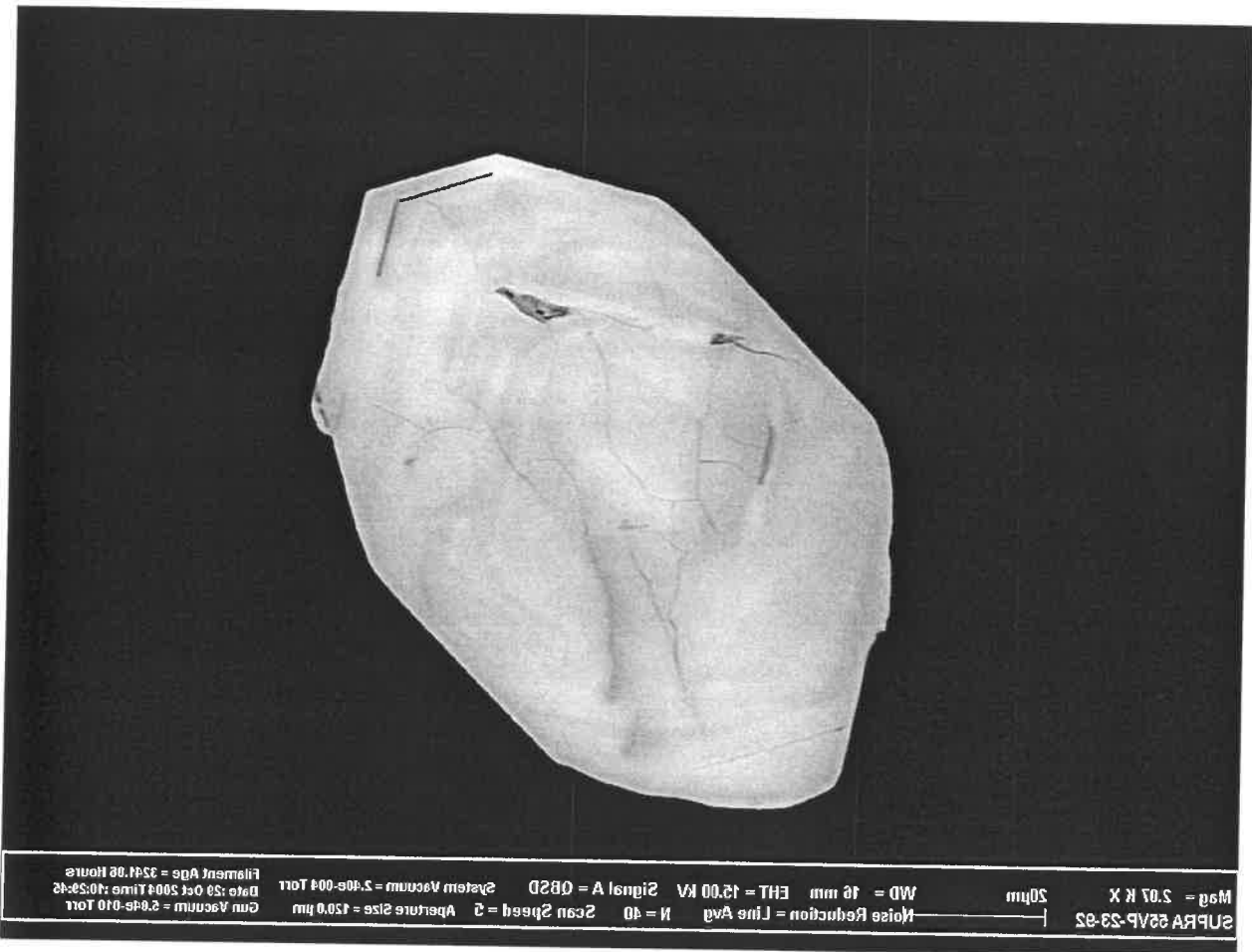
crn11_1.tiff
1024x768, 8bit, 768.2KB



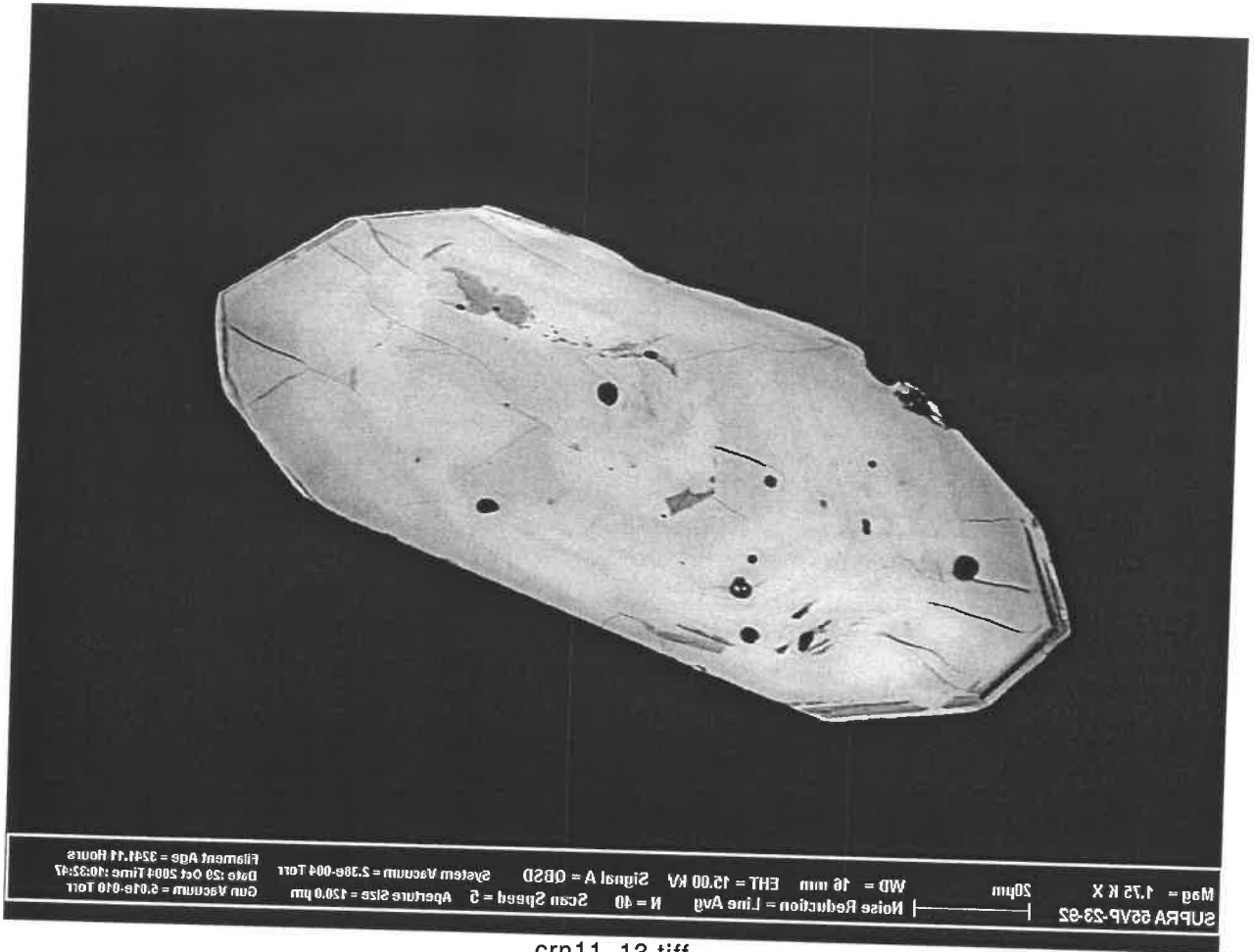
crn11_10.tiff
1024x768, 8bit, 768.2KB



crn11_11.tiff
1024x768, 8bit, 768.2KB



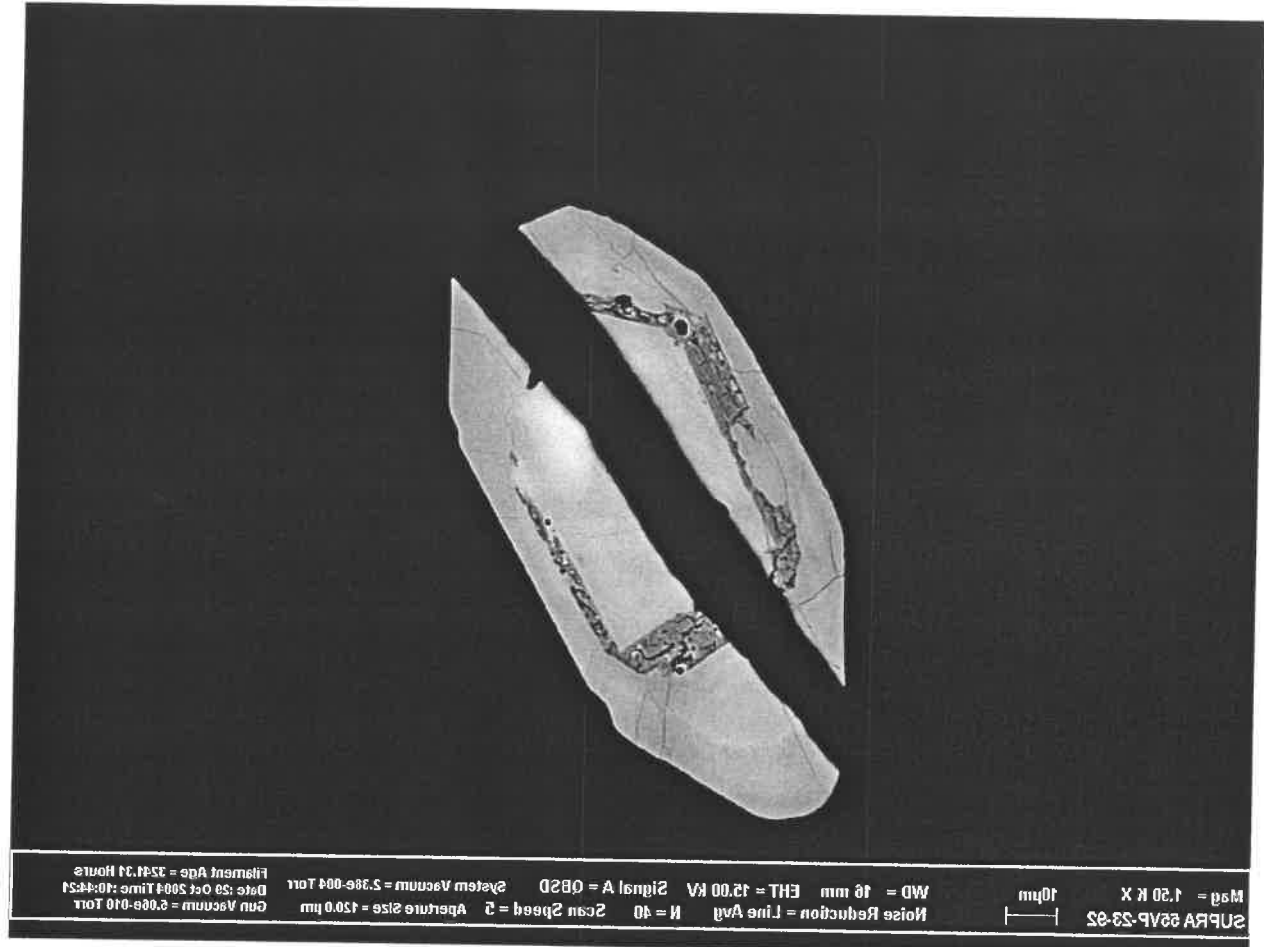
crn11_12.tiff
1024x768, 8bit, 768.2KB



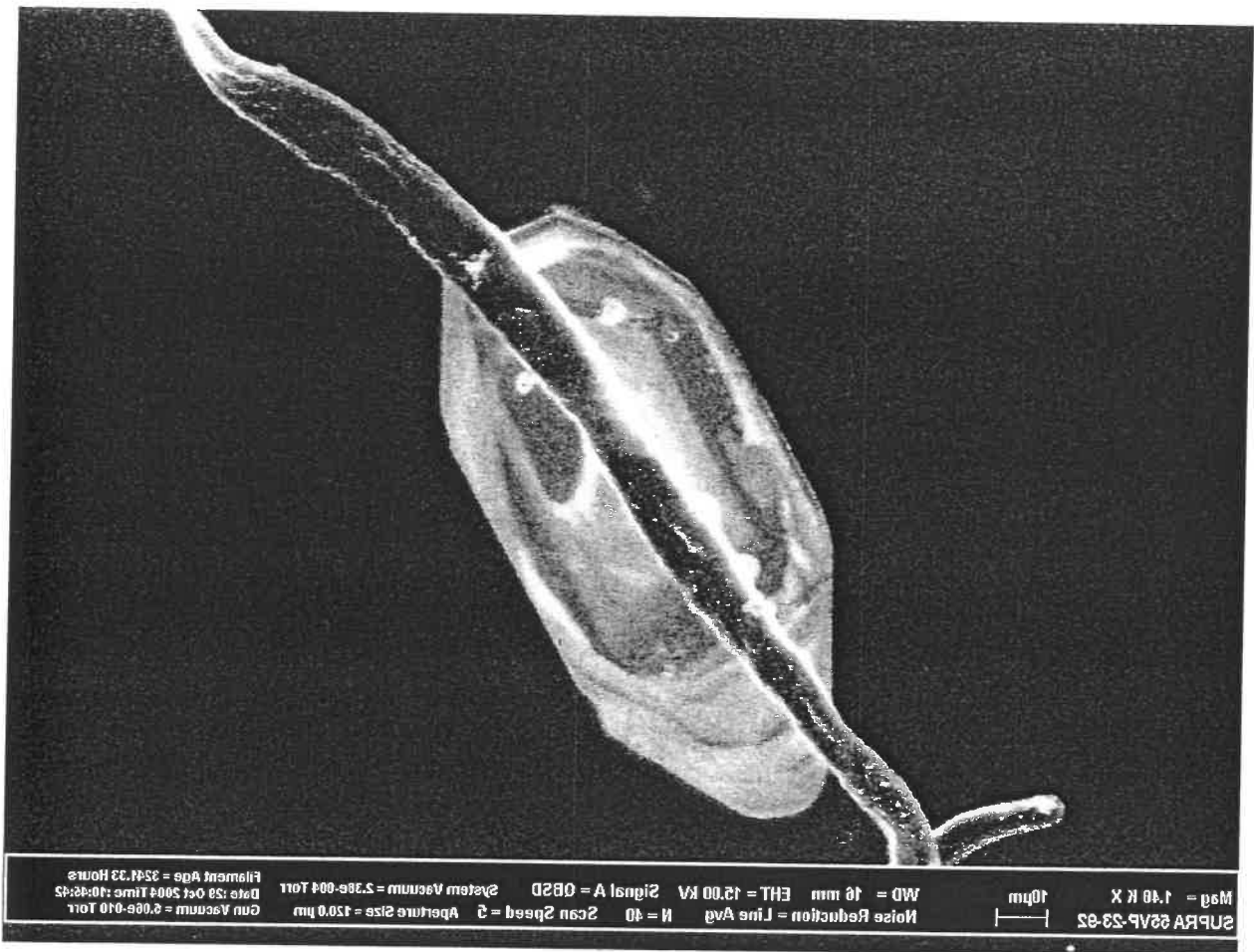
crn11_13.tiff
1024x768, 8bit, 768.2KB



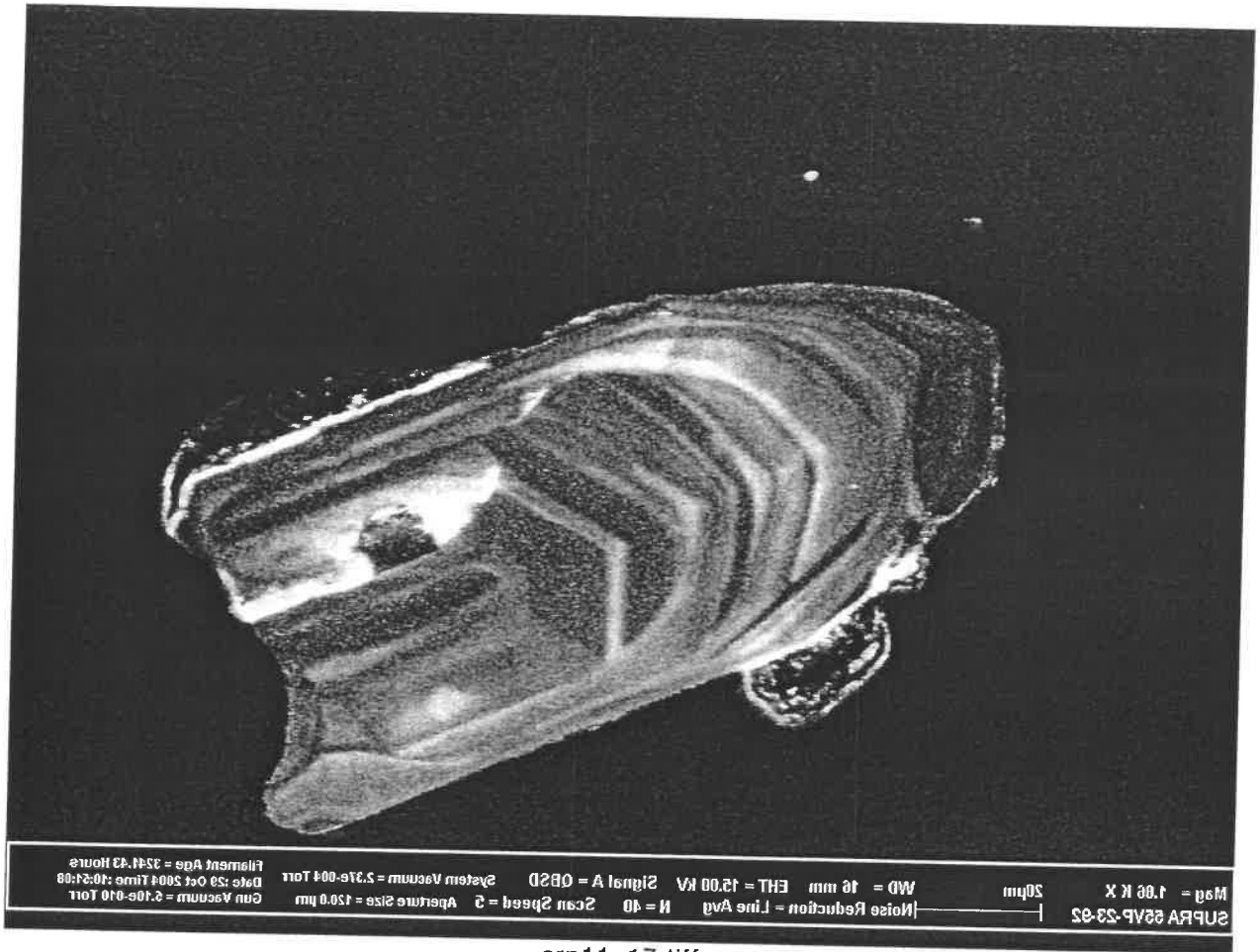
crn11_14.tiff
1024x768, 8bit, 768.2KB



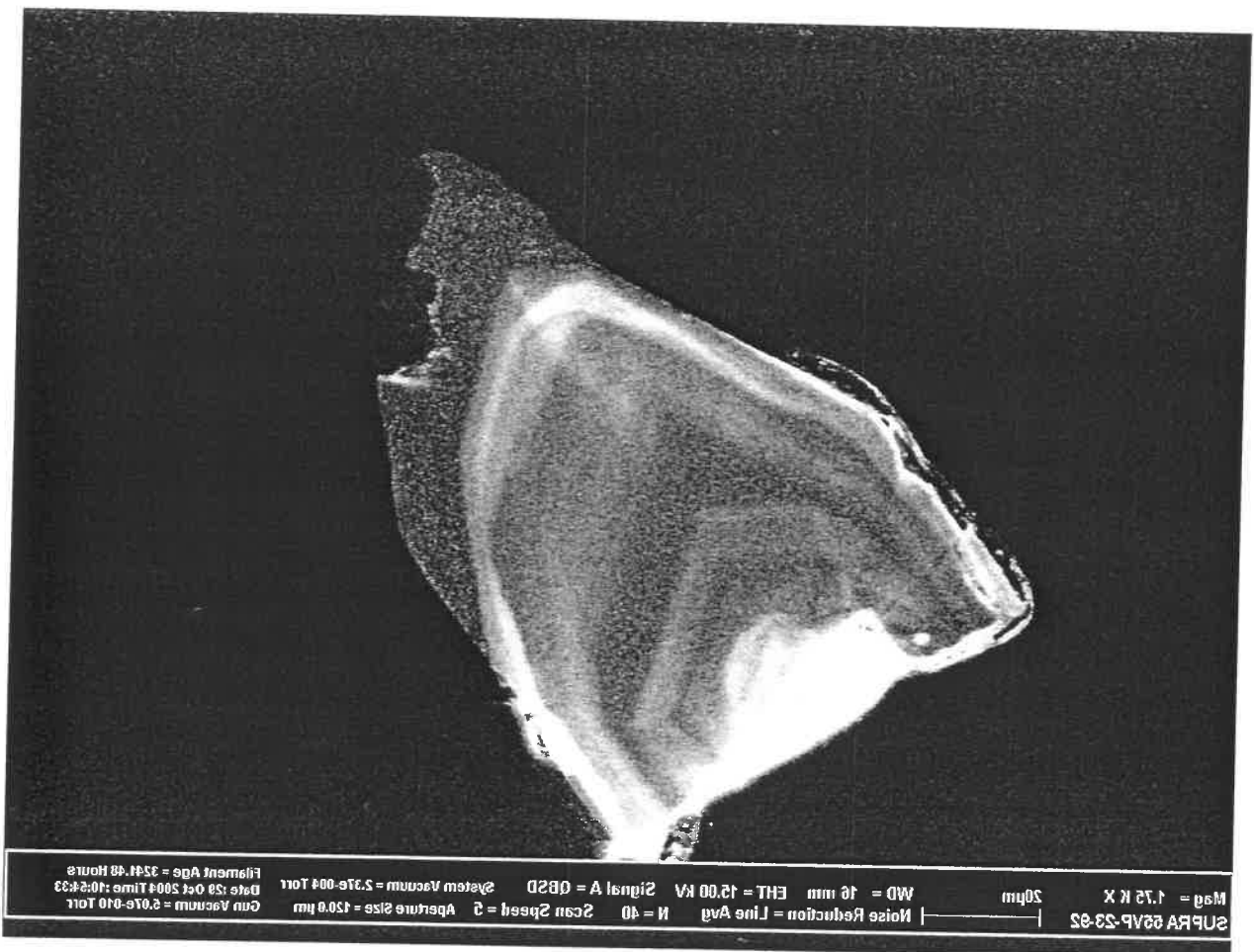
crn11_15.tiff
1024x768, 8bit, 768.2KB



crn11_16.tiff
1024x768, 8bit, 768.2KB



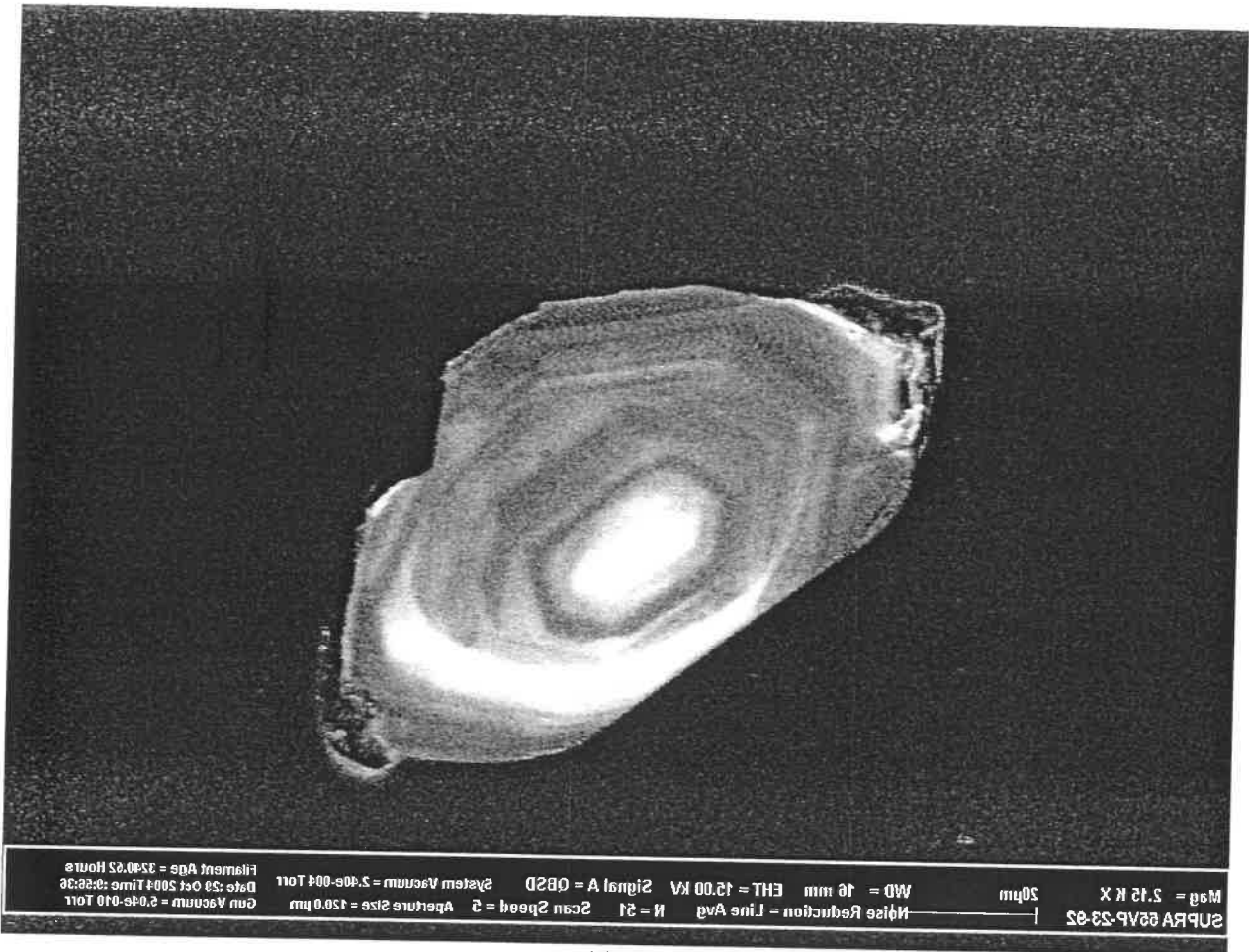
crn11_17.tiff
1024x768, 8bit, 768.2KB



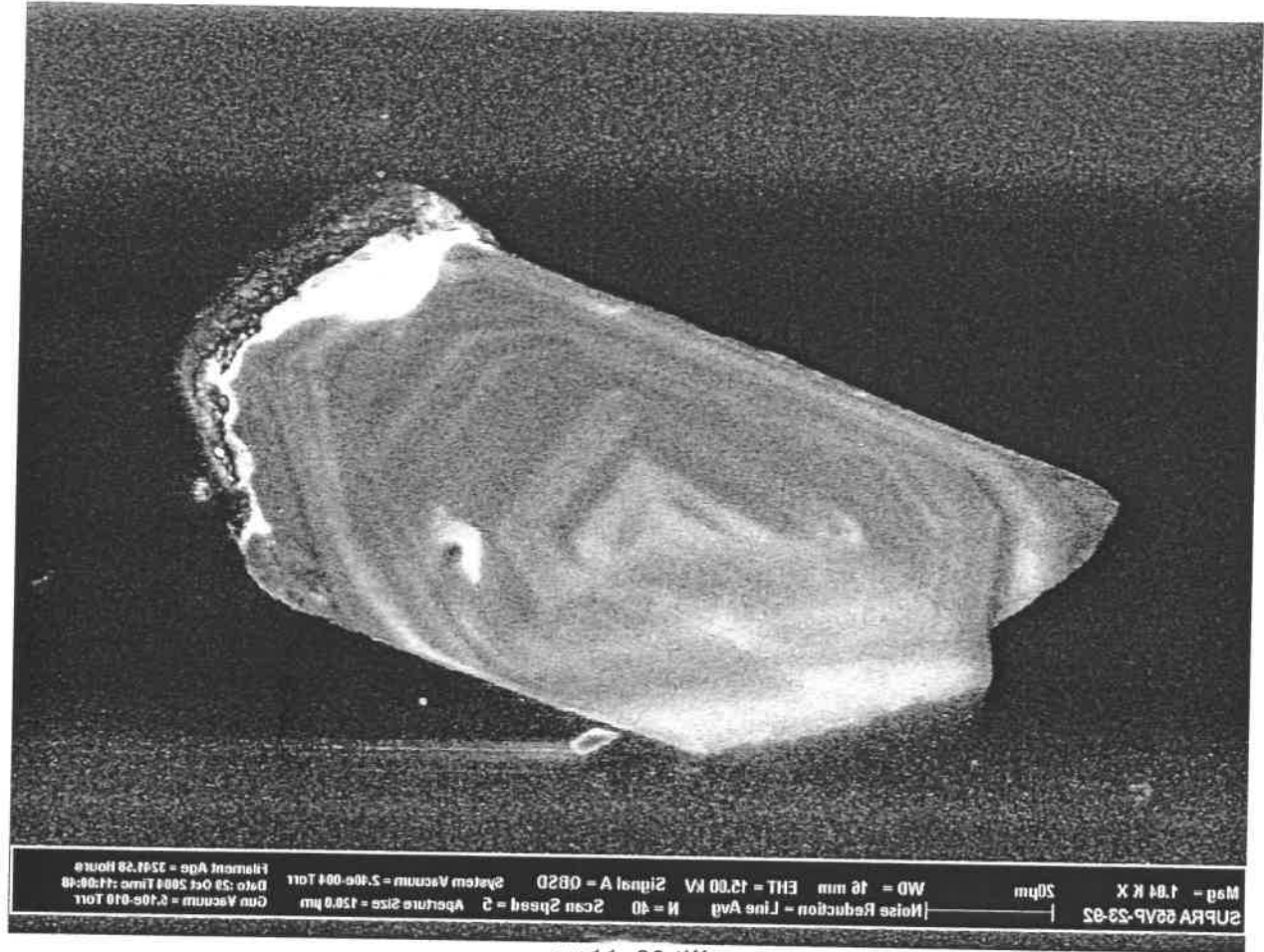
crn11_18.tiff
1024x768, 8bit, 768.2KB



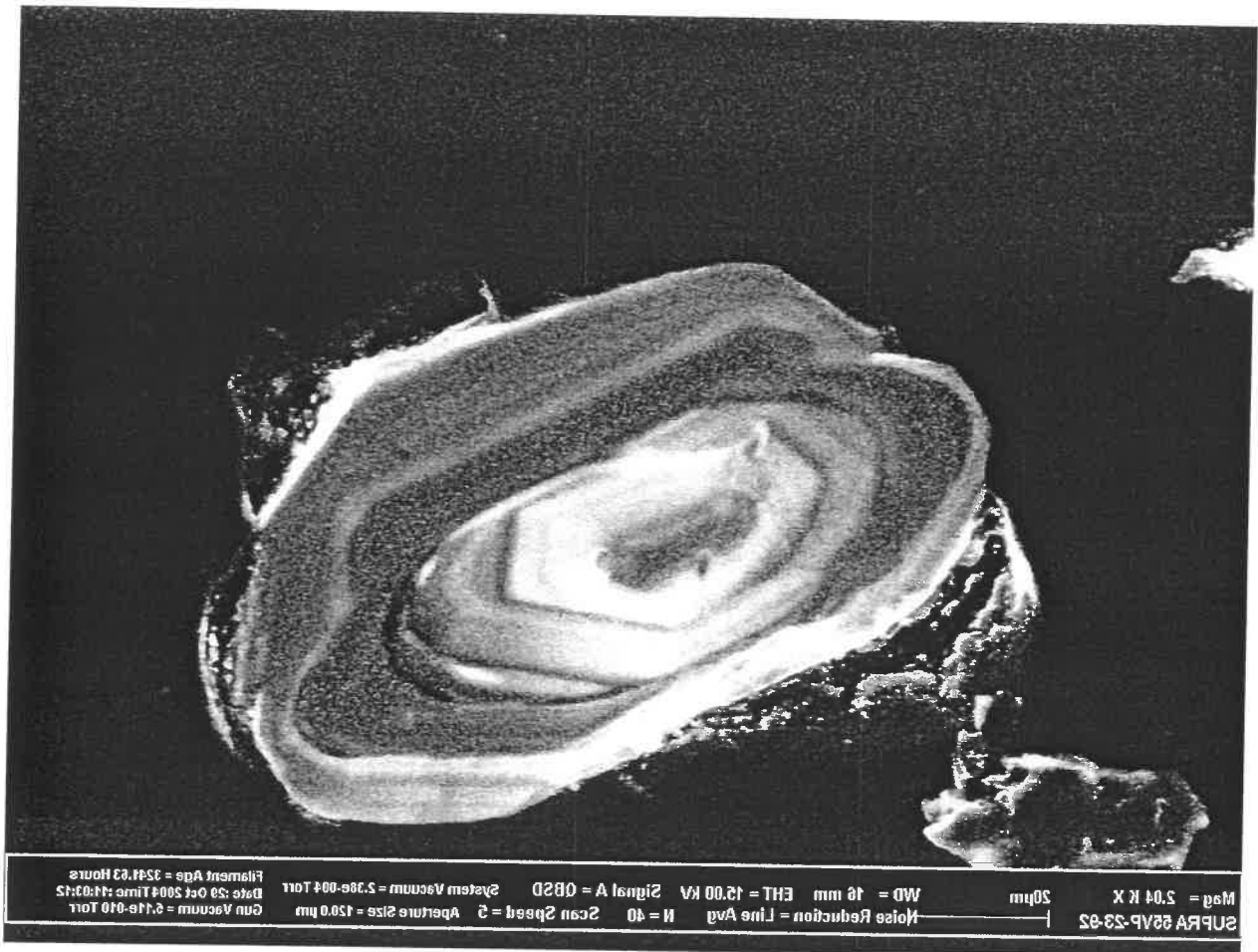
crn11_19.tiff
1024x768, 8bit, 768.2KB



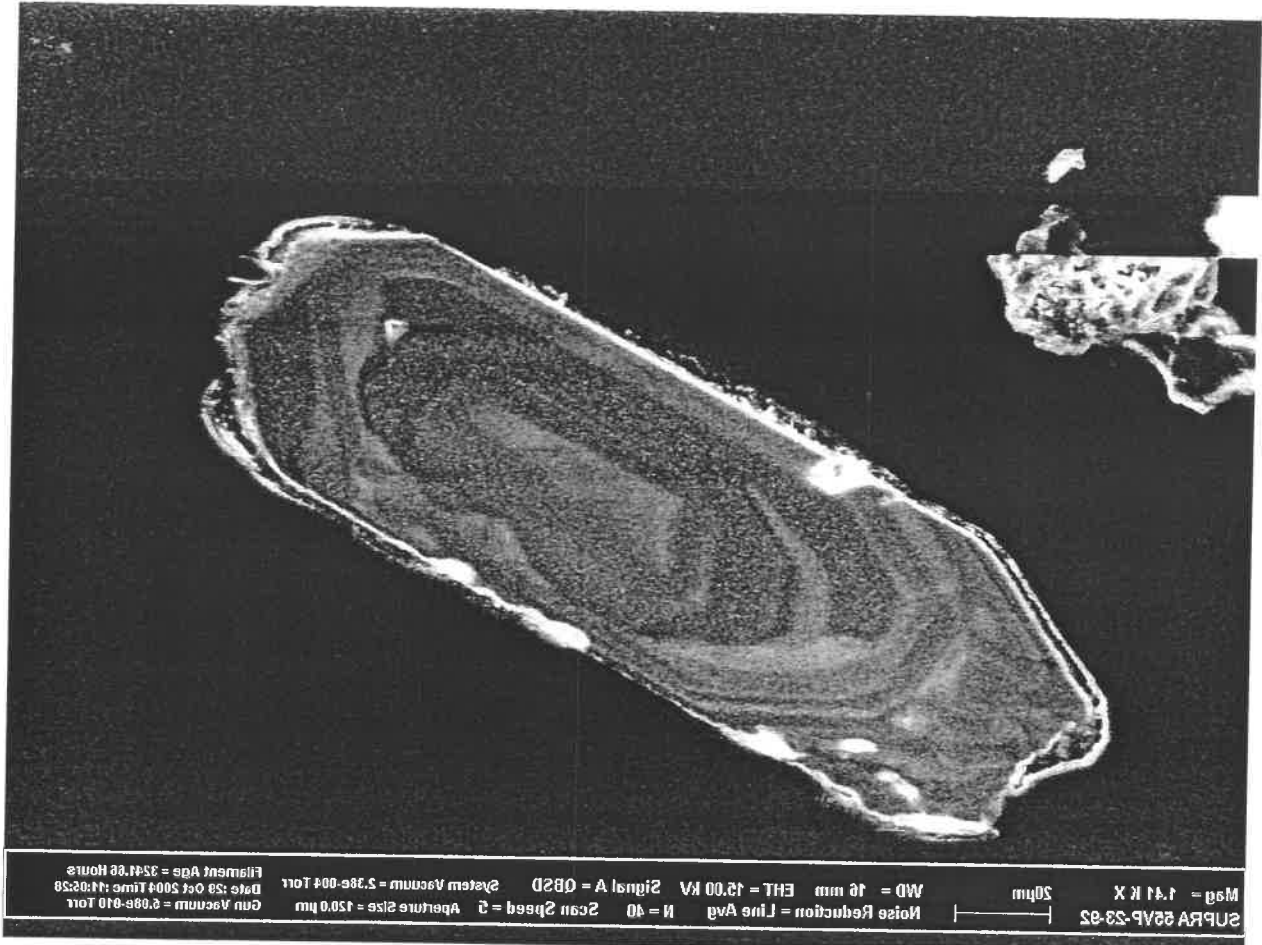
crn11_2.tiff
1024x768, 8bit, 768.2KB



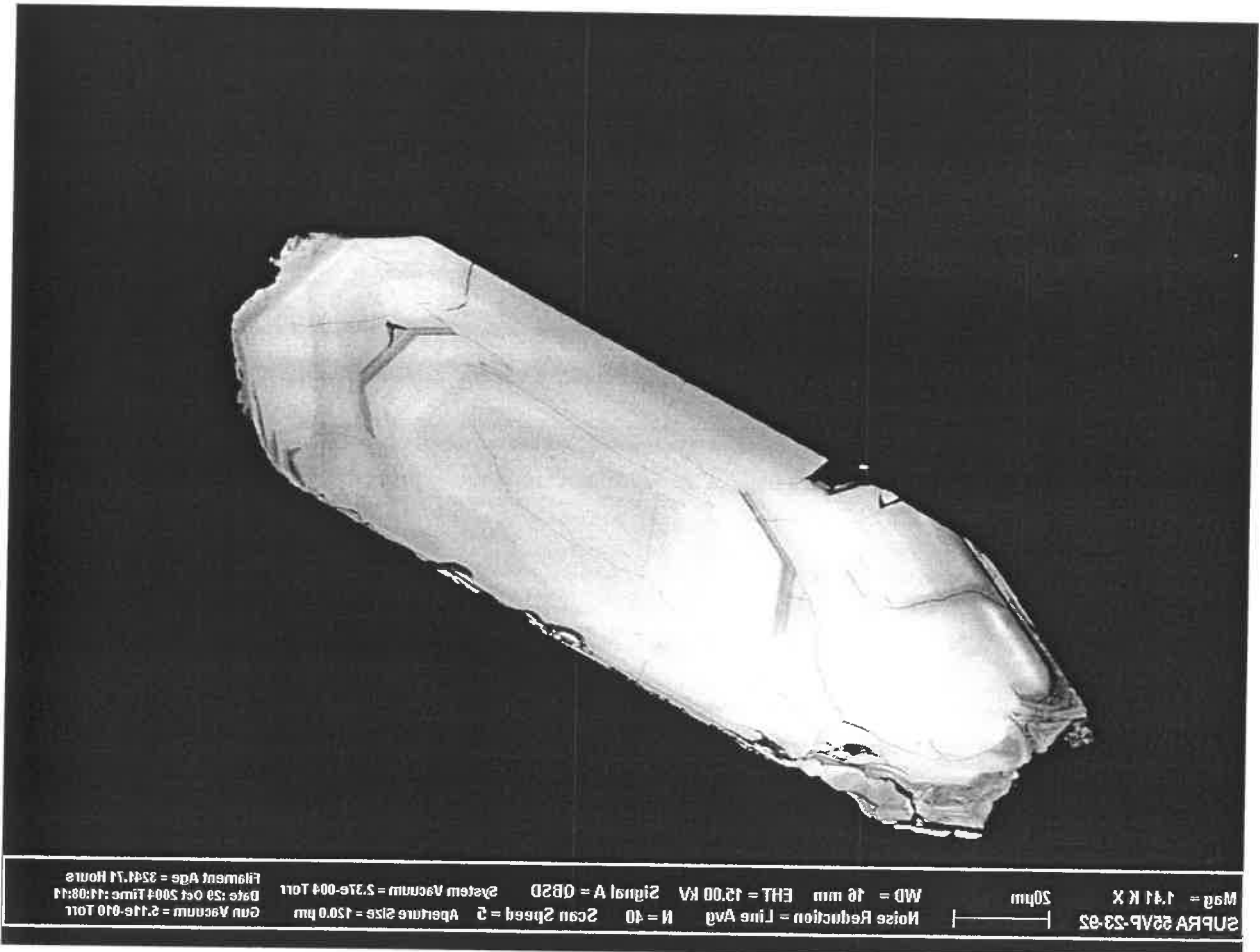
crn11_20.tiff
1024x768, 8bit, 768.2KB



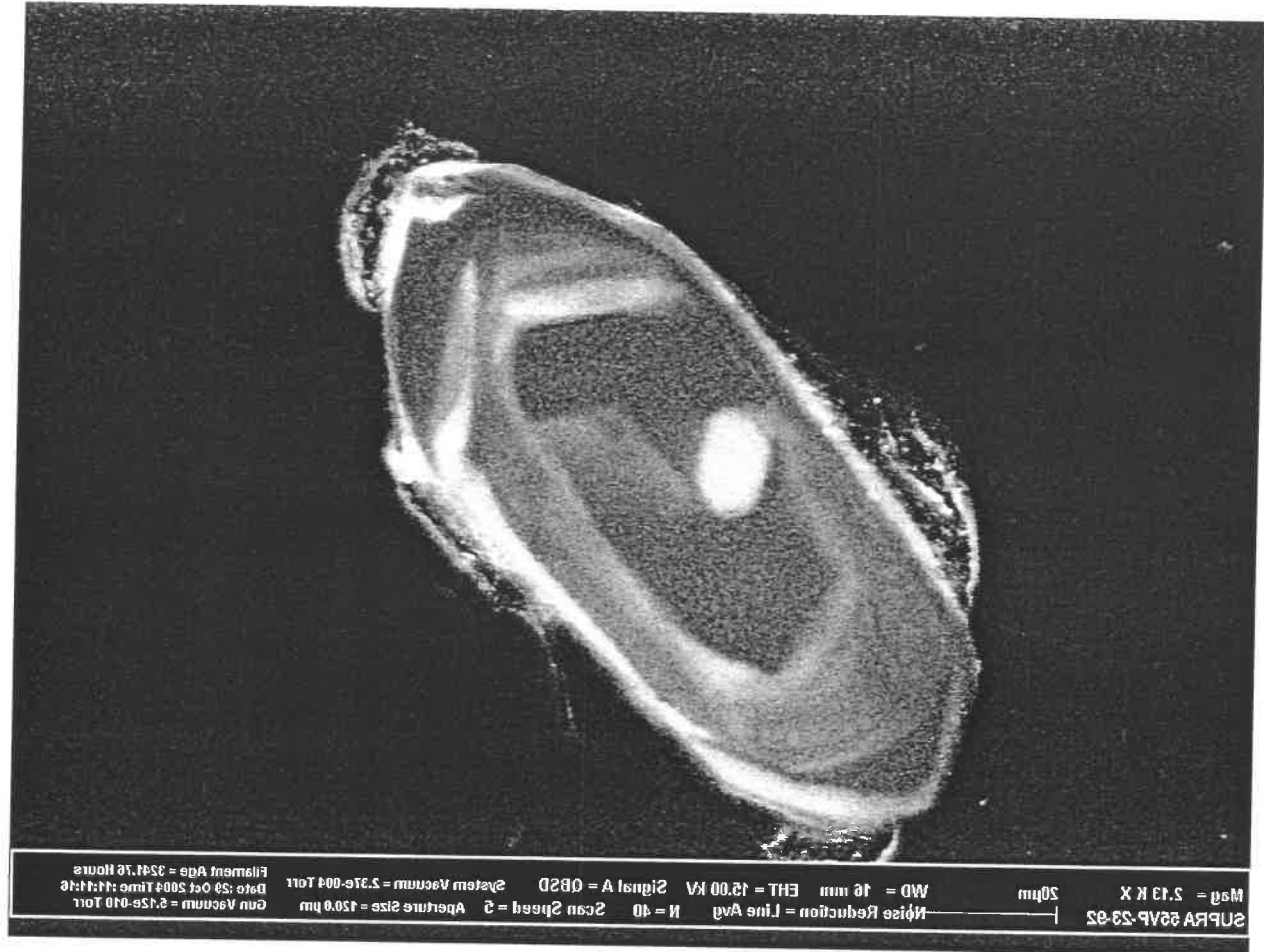
crn11_21.tiff
1024x768, 8bit, 768.2KB



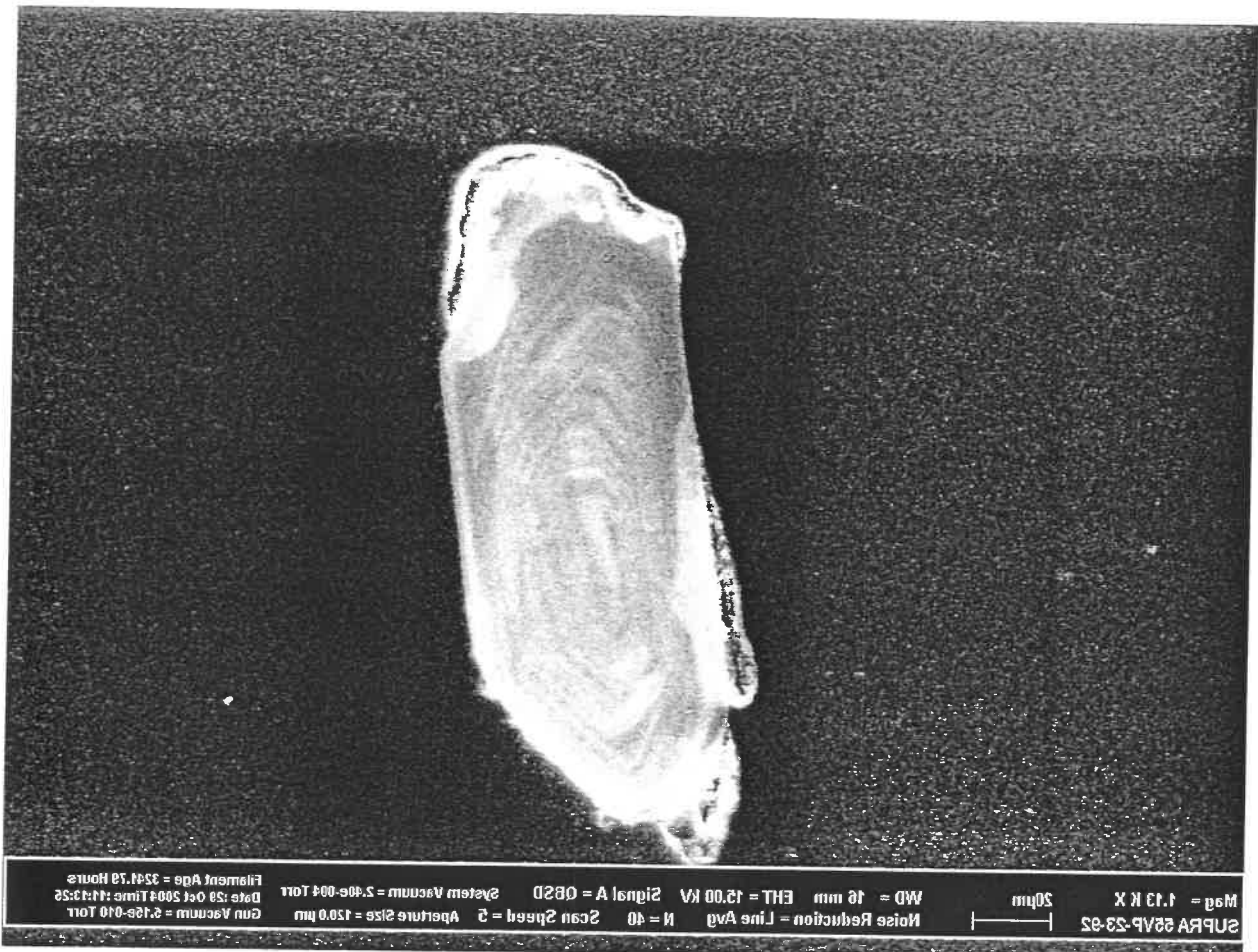
crn11_22.tiff
1024x768, 8bit, 768.2KB



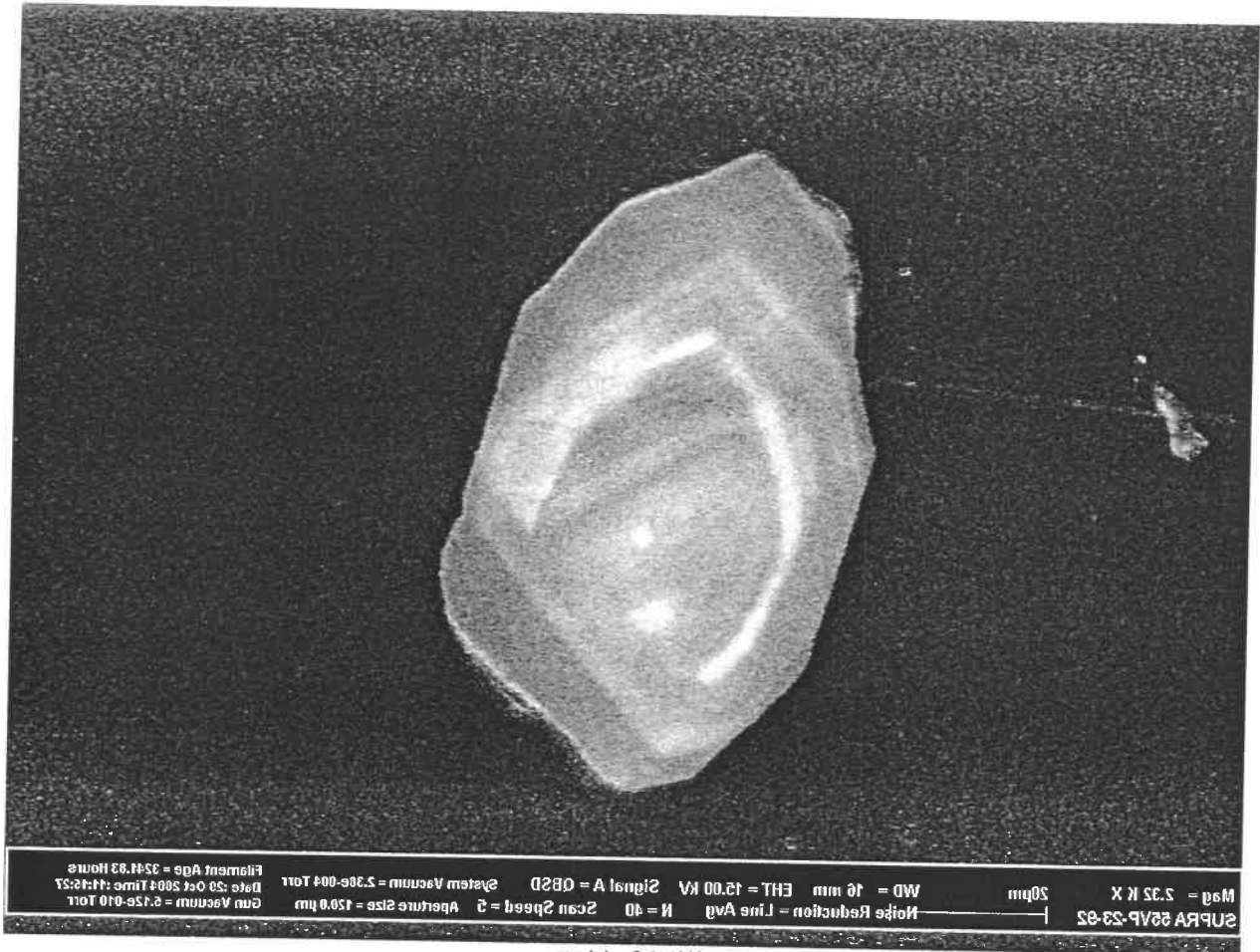
crn11_23.tiff
1024x768, 8bit, 768.2KB



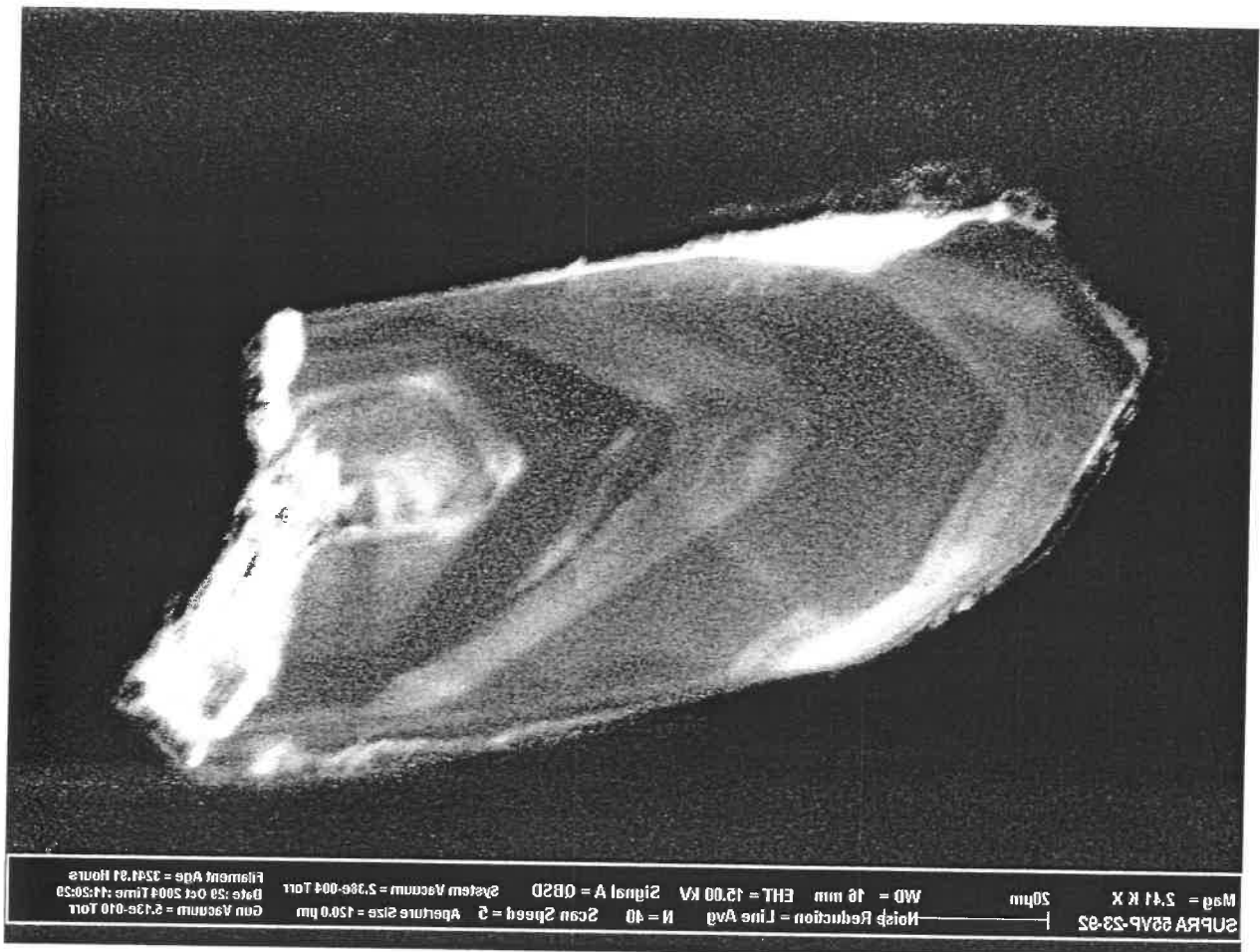
crn11_24.tiff
1024x768, 8bit, 768.2KB



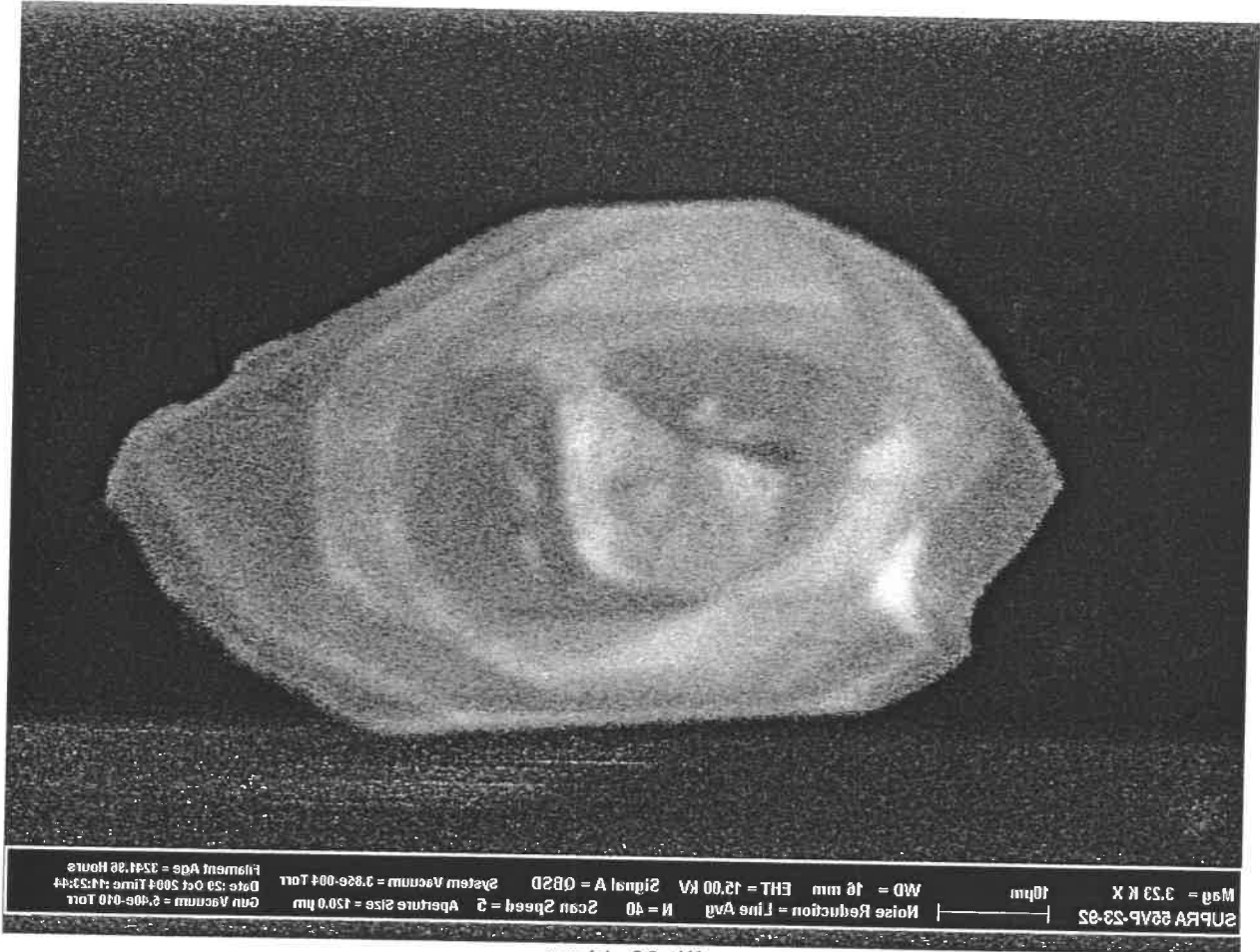
crn11_25.tiff
1024x768, 8bit, 768.2KB



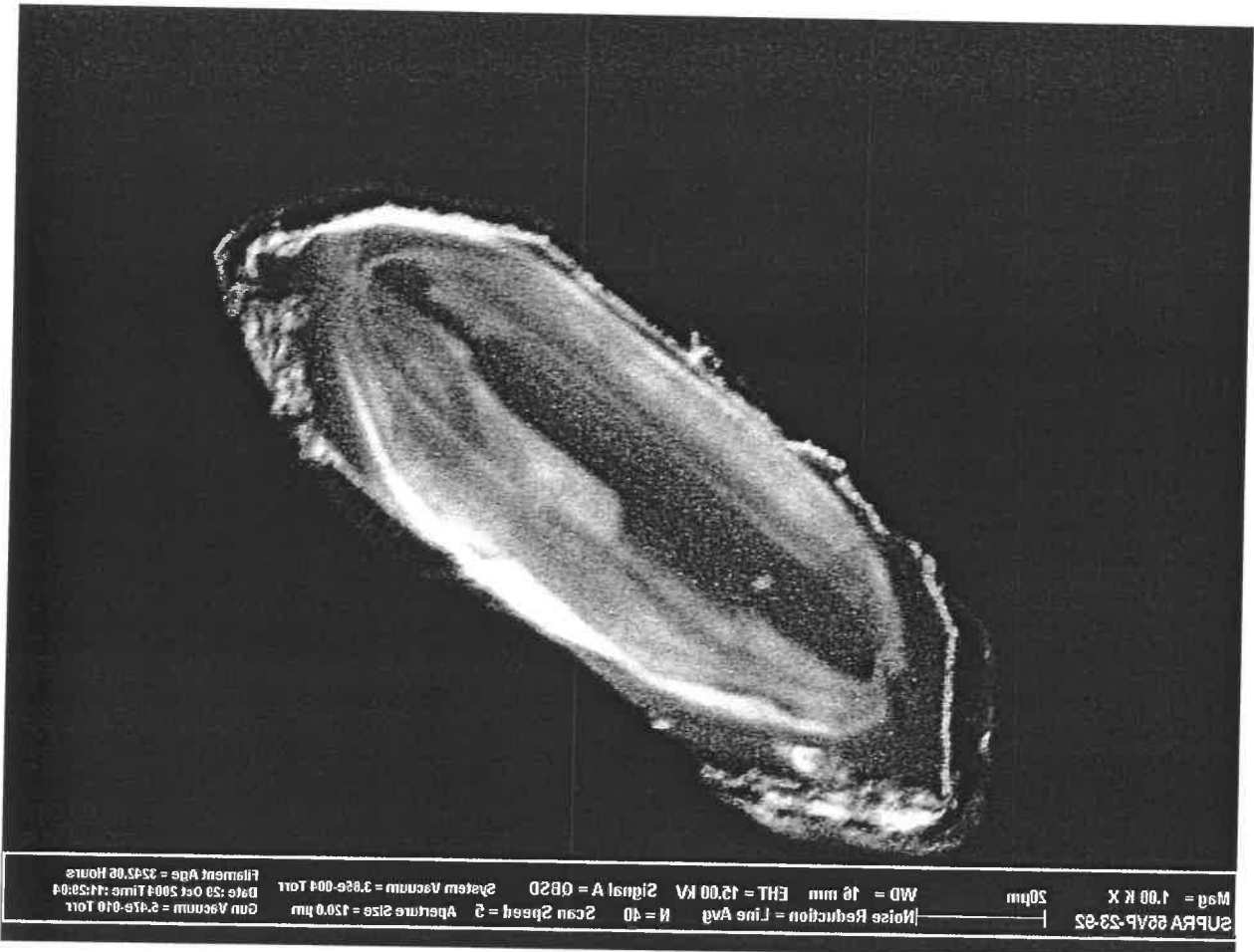
crn11_26.tiff
1024x768, 8bit, 768.2KB



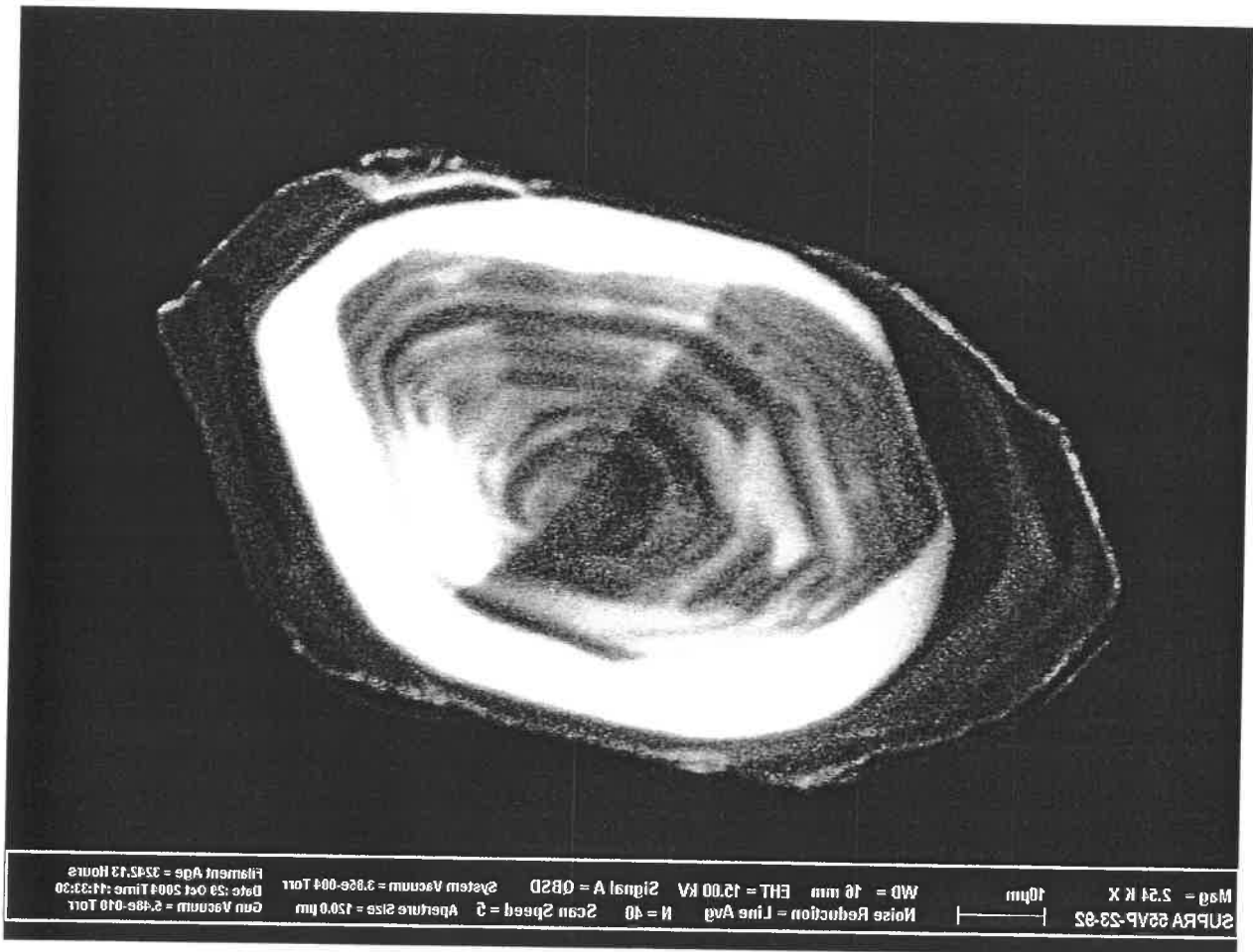
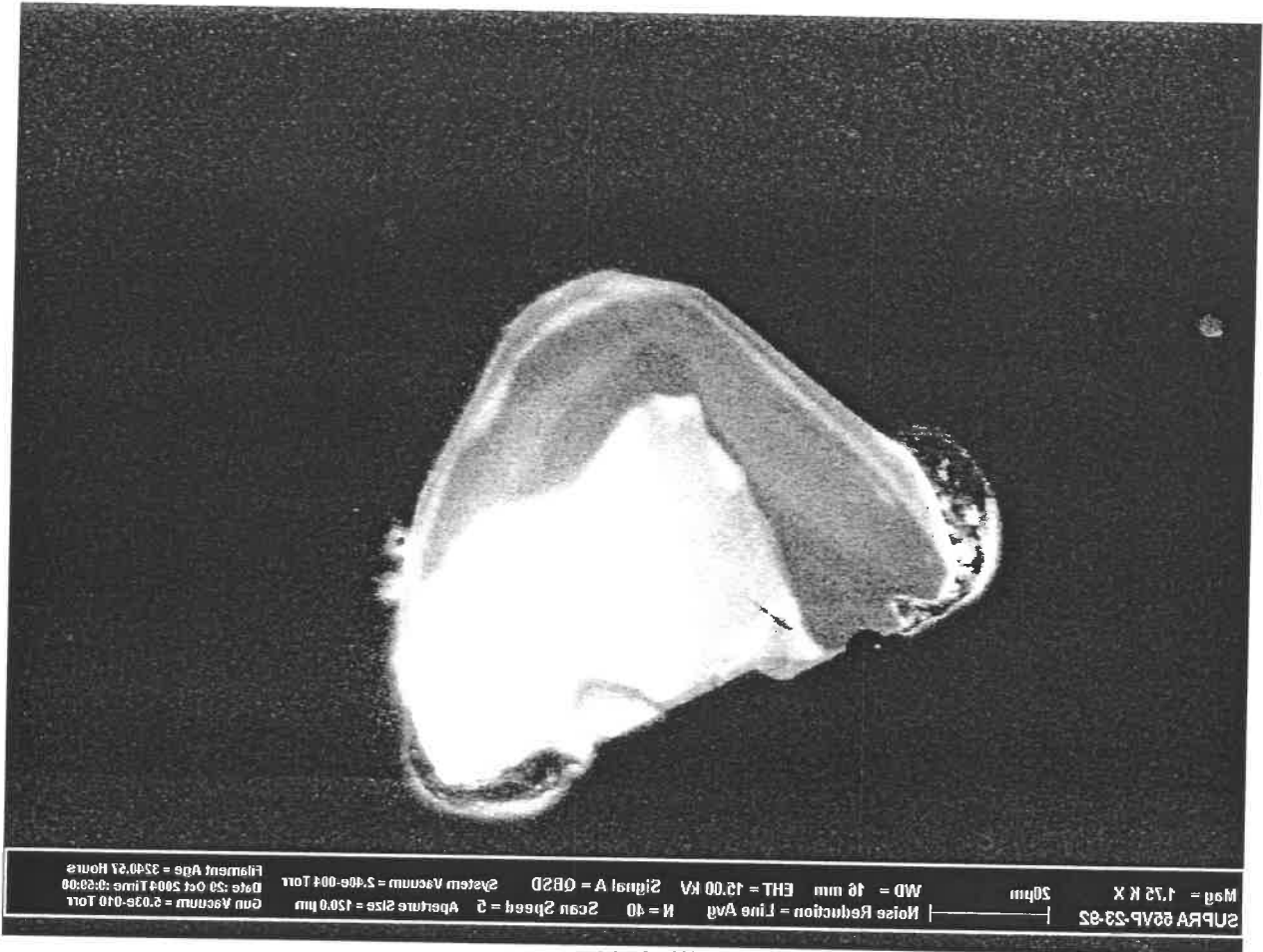
crn11_27.tiff
1024x768, 8bit, 768.2KB

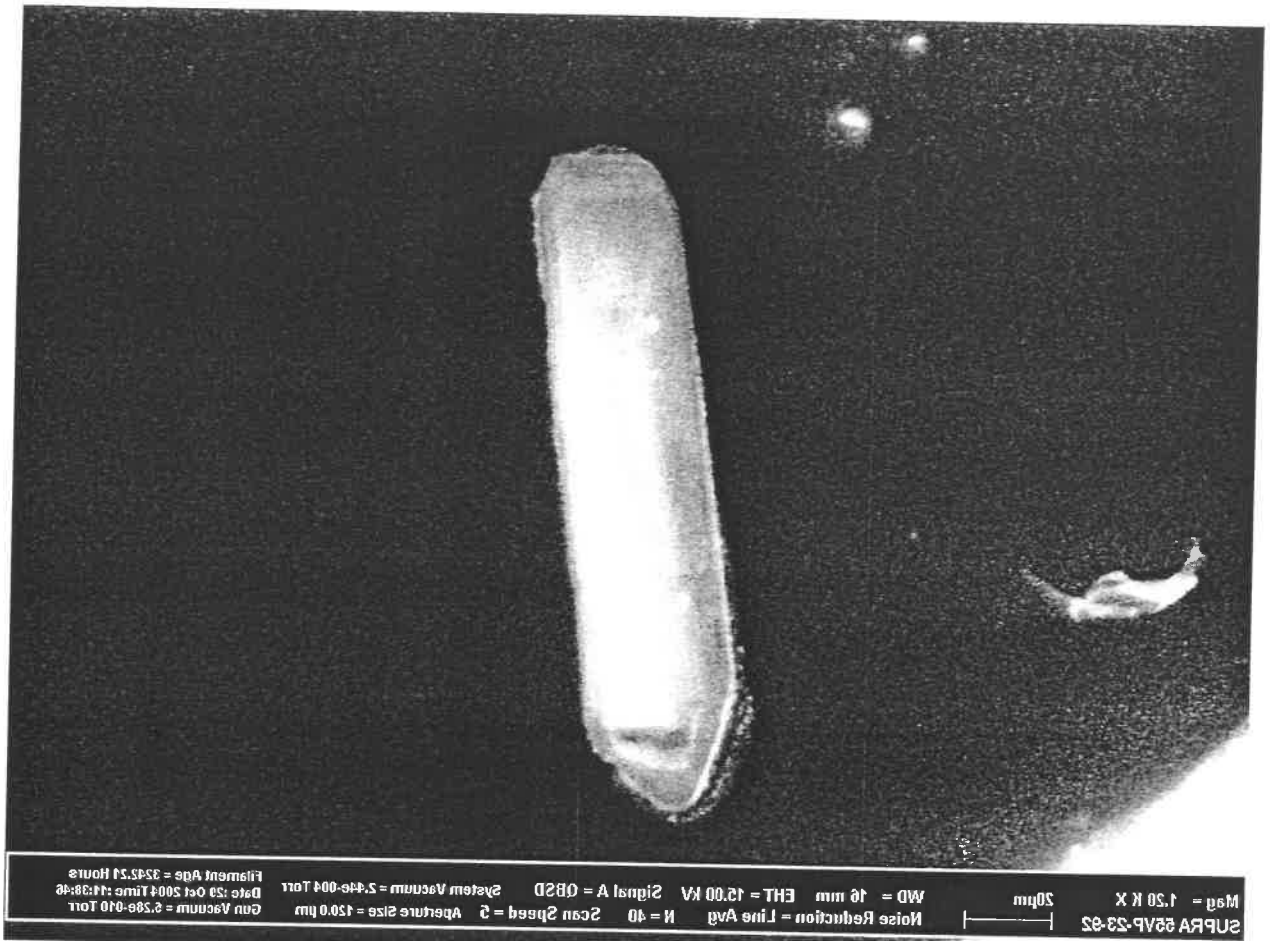


crn11_28.tiff
1024x768, 8bit, 768.2KB

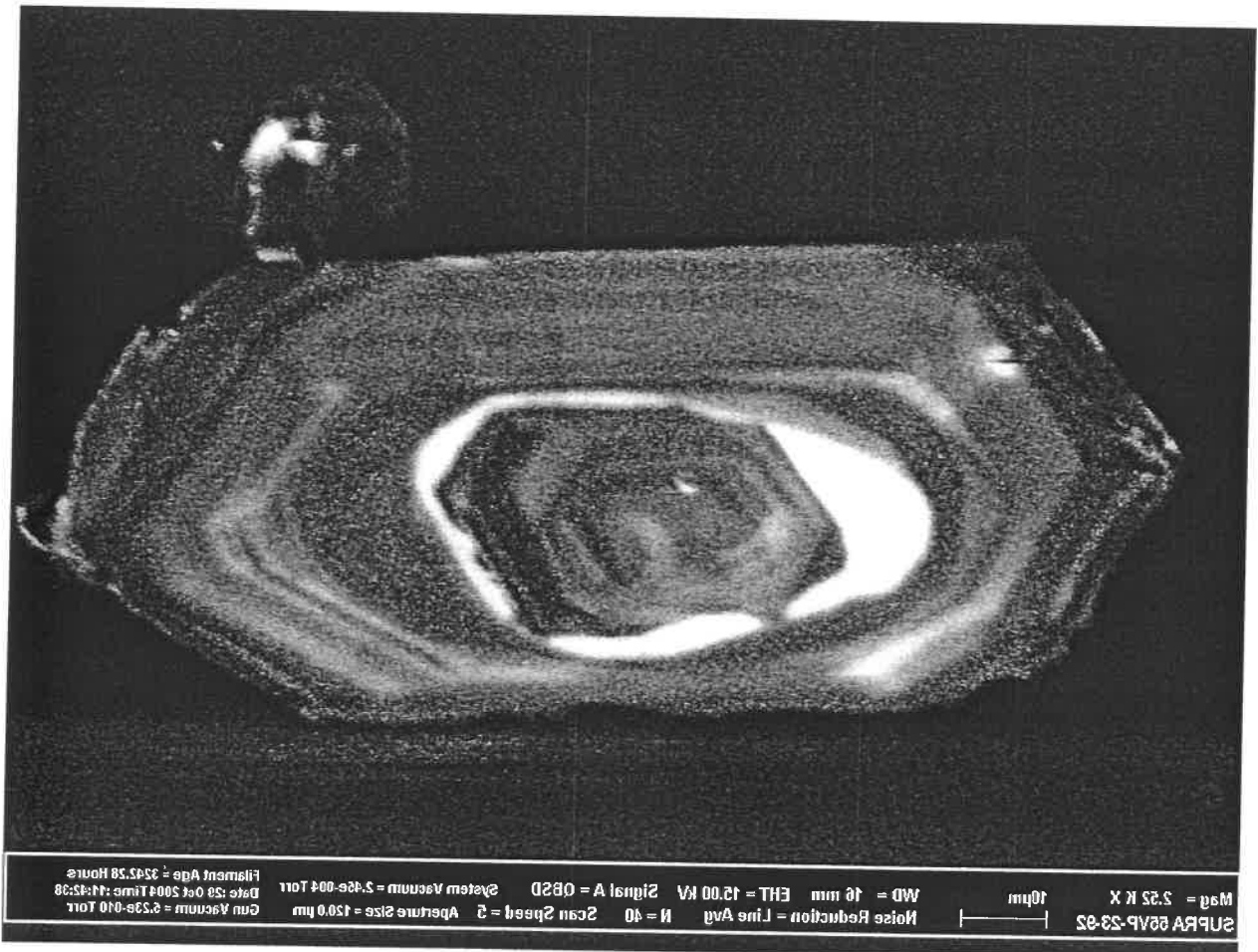


crn11_29.tiff
1024x768, 8bit, 768.2KB

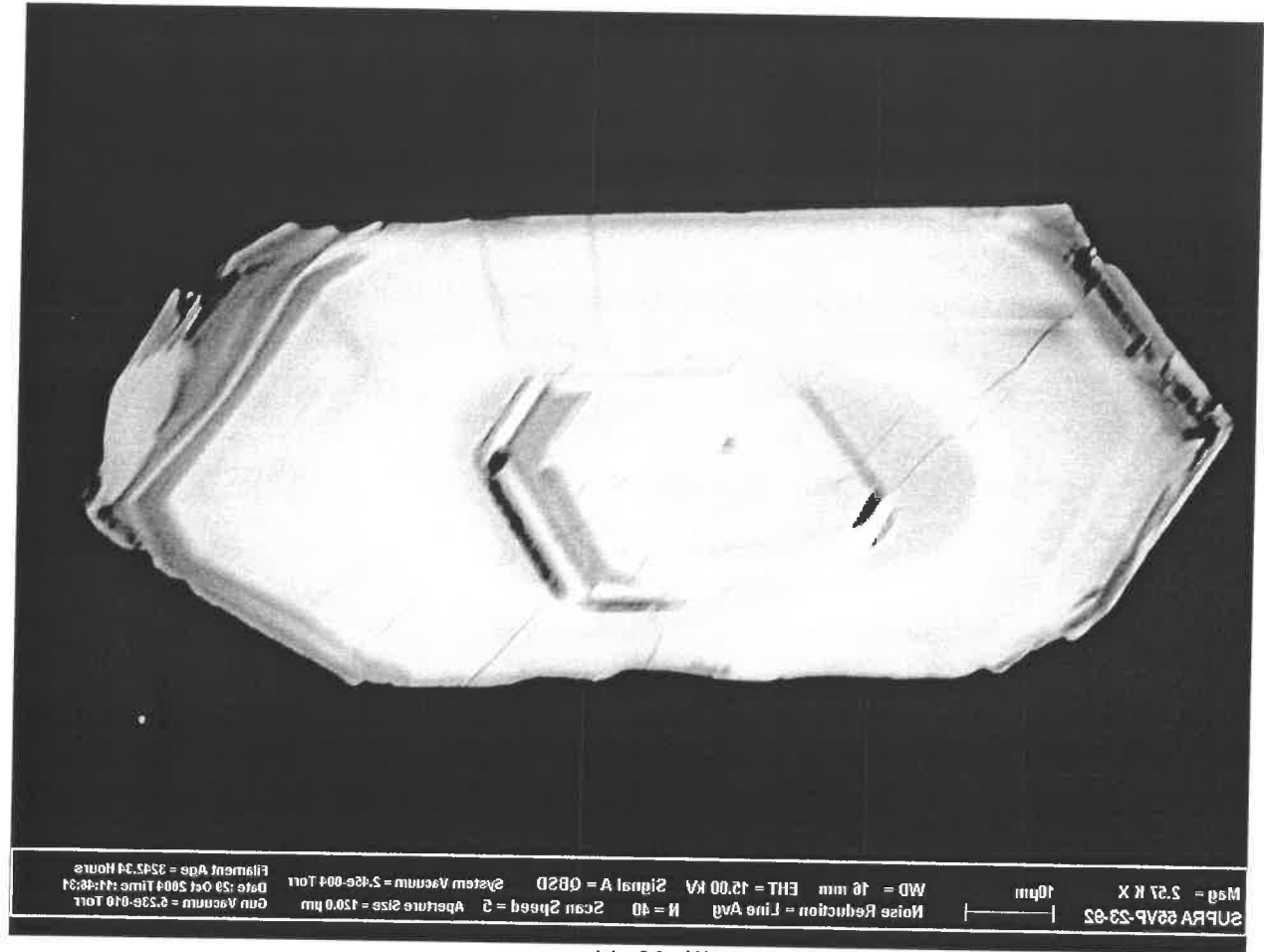




crn11_31.tiff
1024x768, 8bit, 768.2KB



crn11_32.tiff
1024x768, 8bit, 768.2KB



crn11_33.tiff
1024x768, 8bit, 768.2KB



crn11_34.tiff
1024x768, 8bit, 768.2KB