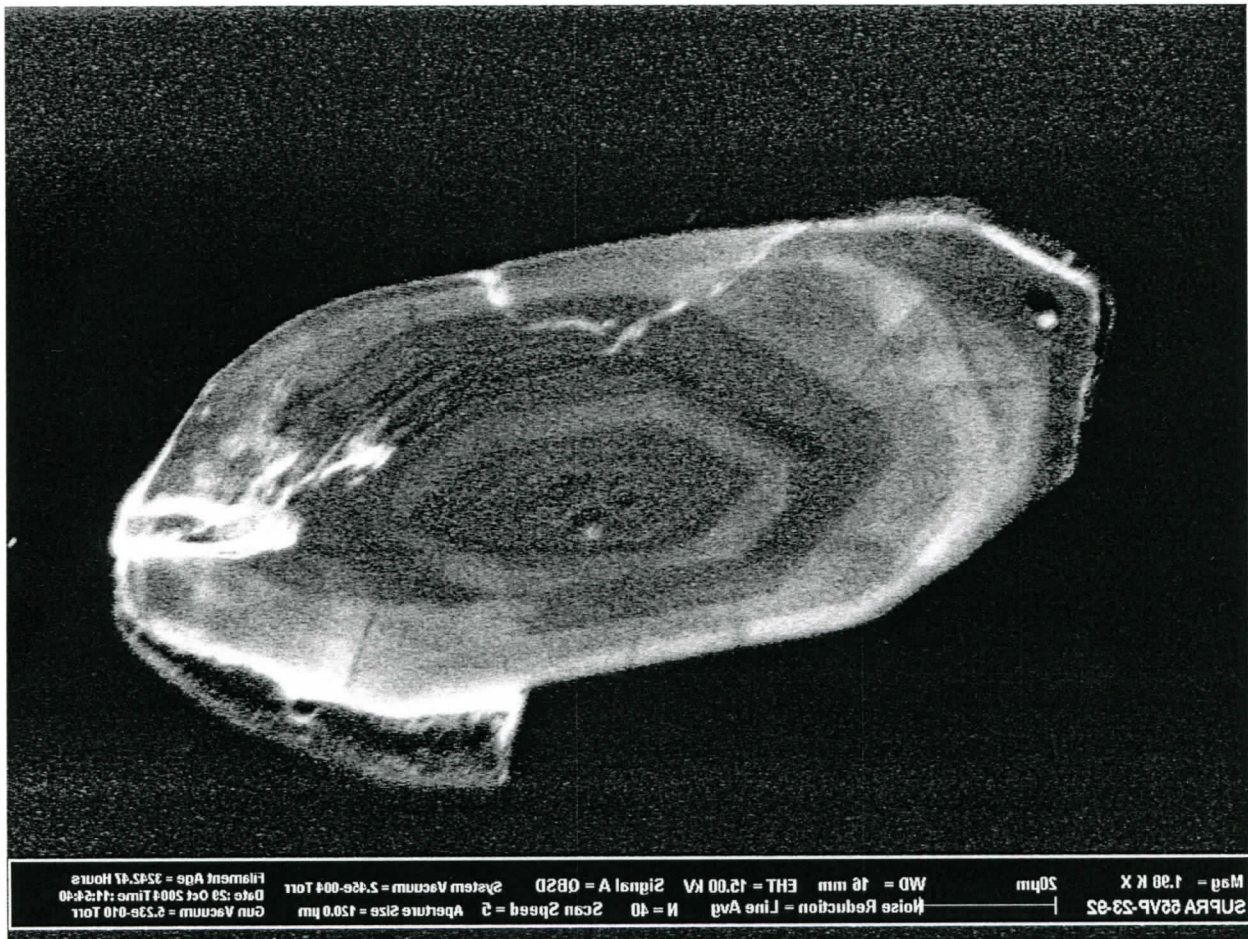
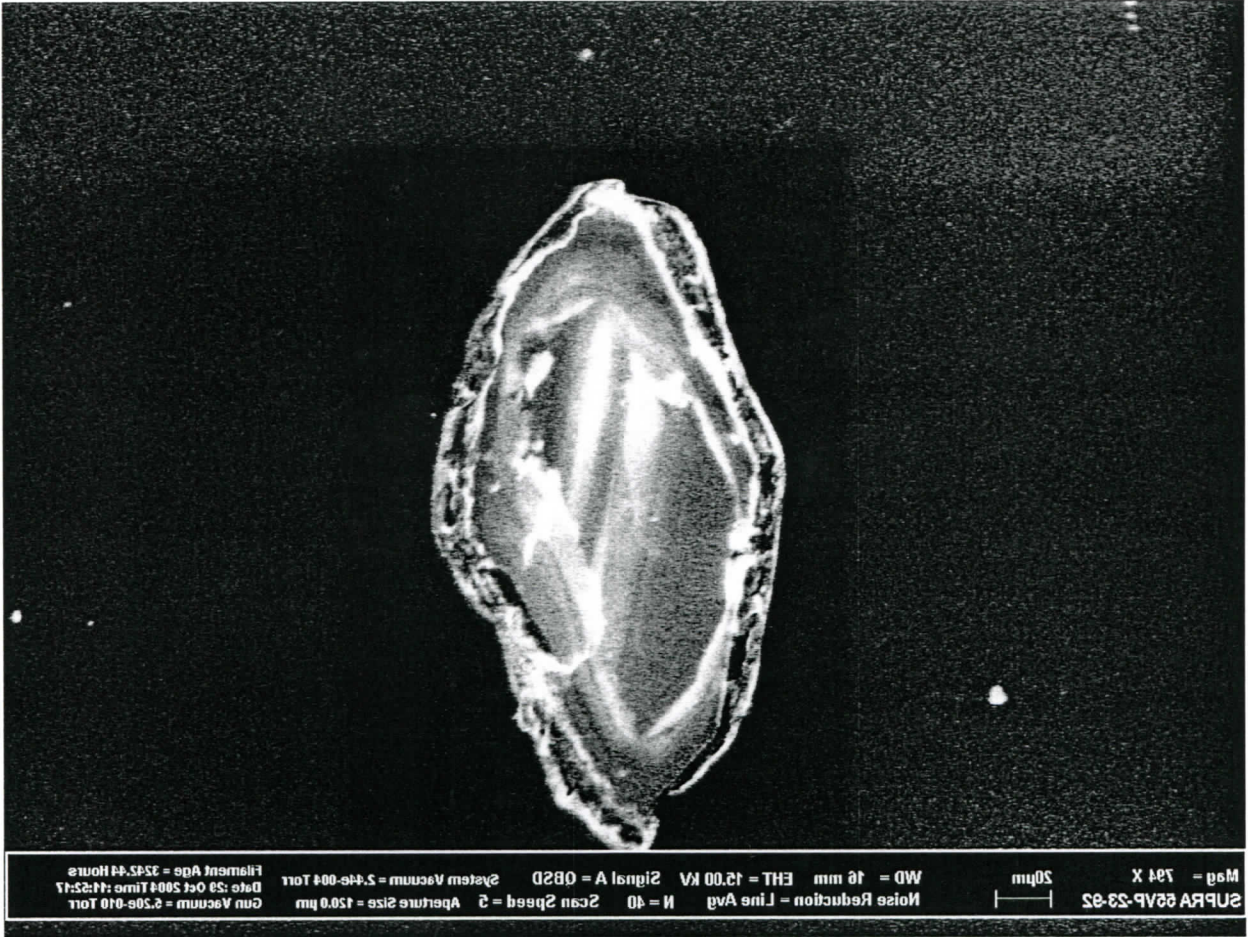


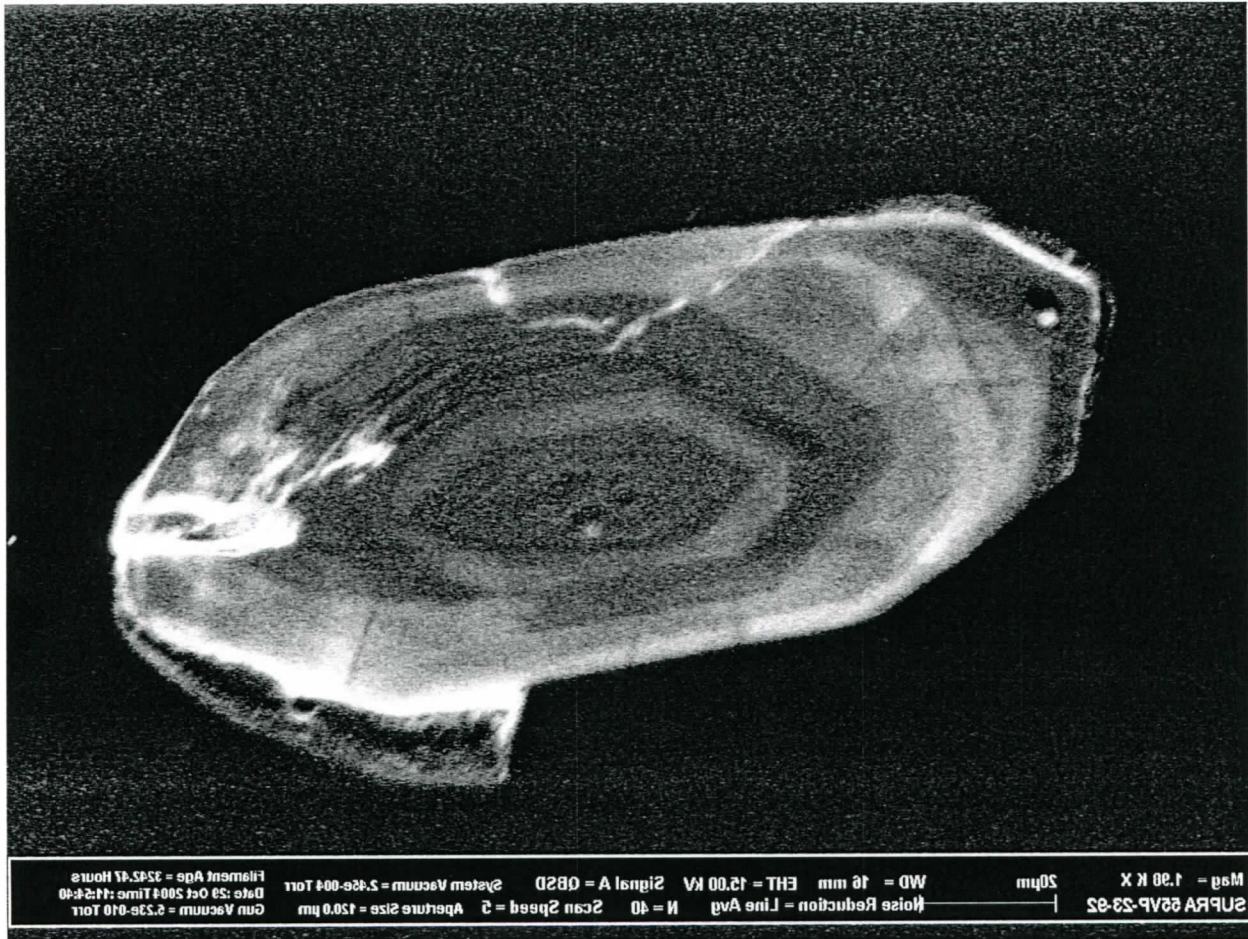
crn11_35.tiff
1024x768, 8bit, 768.2KB



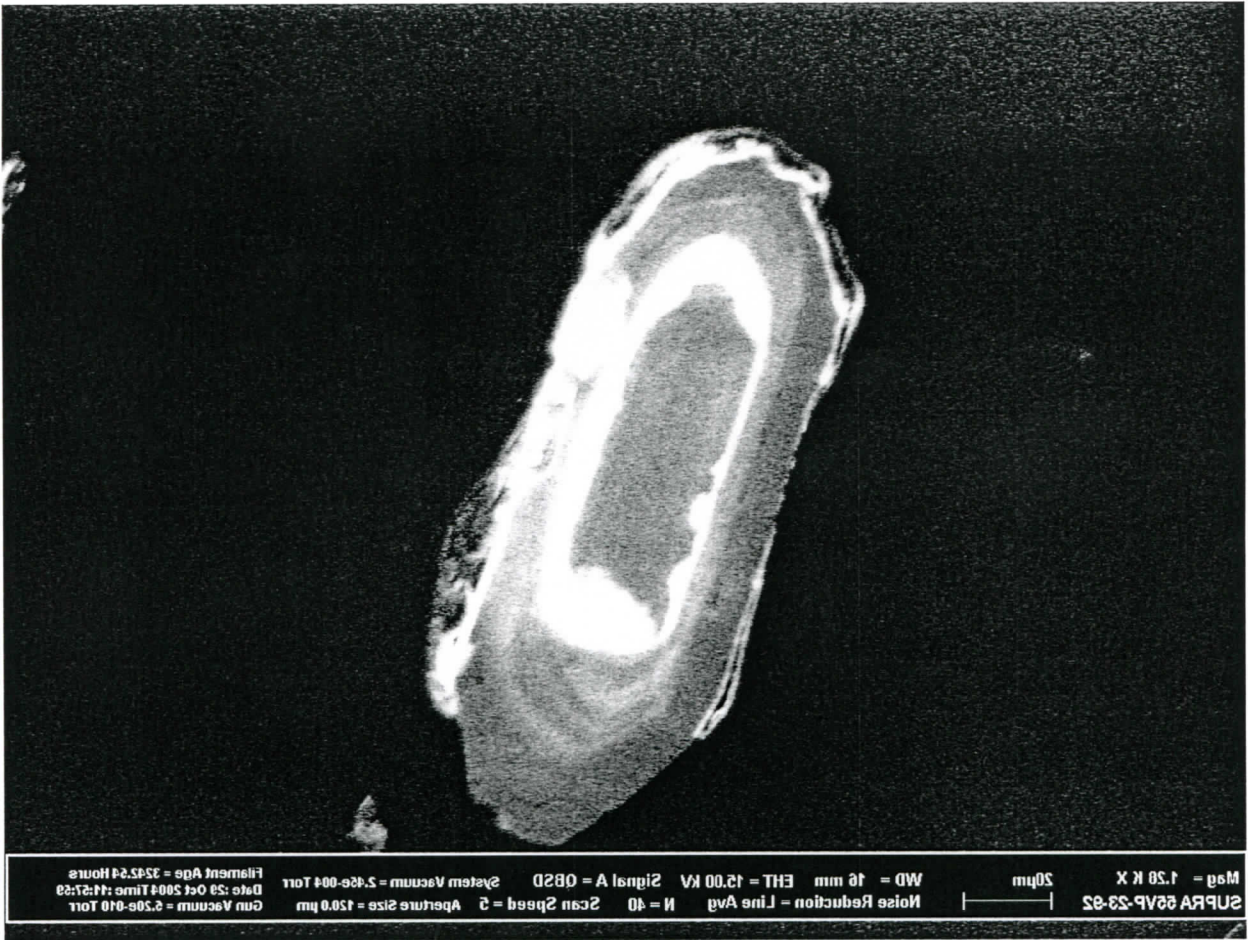
crn11_36.tiff
1024x768, 8bit, 768.2KB



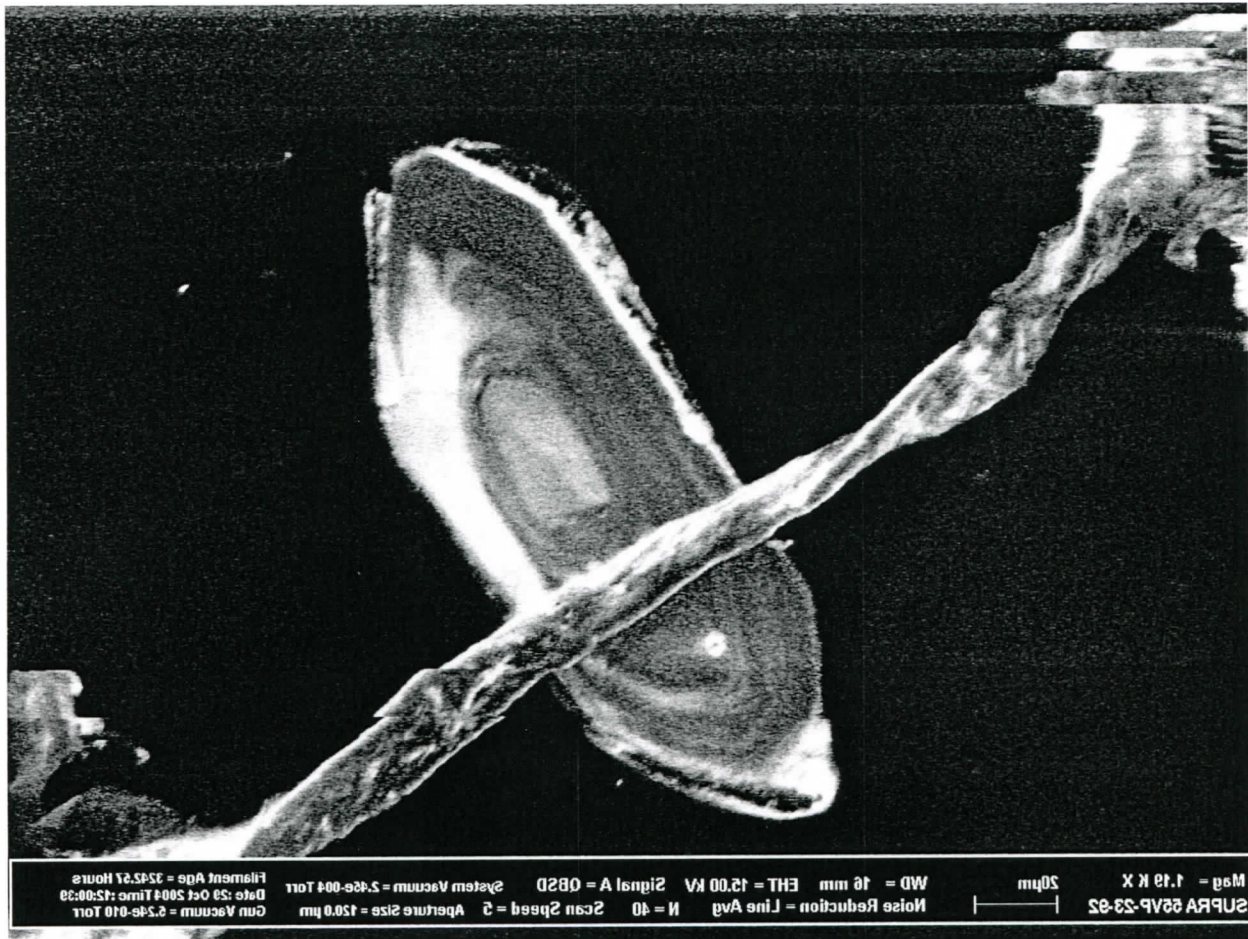
crn11_35.tiff
1024x768, 8bit, 768.2KB



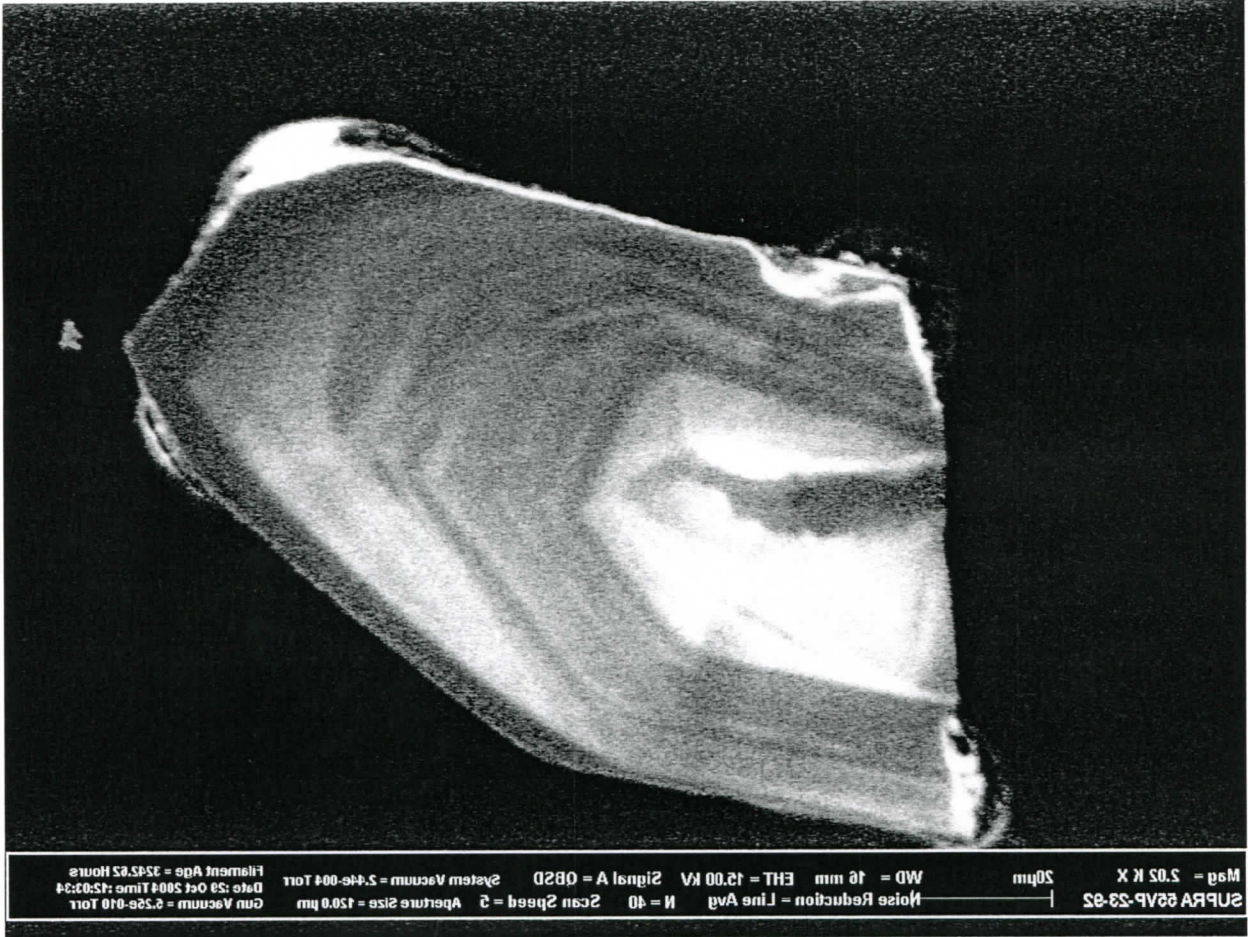
crn11_36.tiff
1024x768, 8bit, 768.2KB



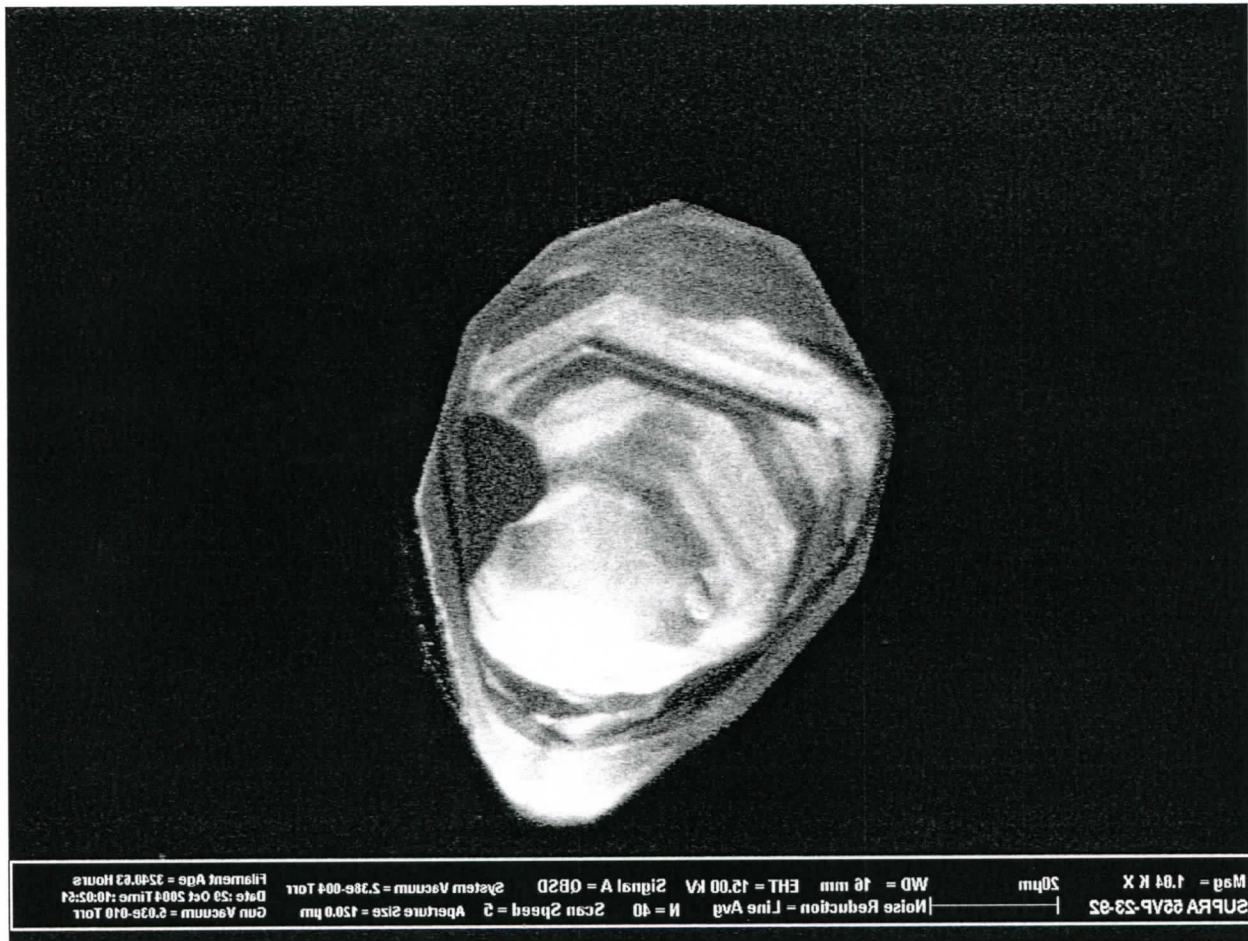
crn11_37.tiff
1024x768, 8bit, 768.2KB



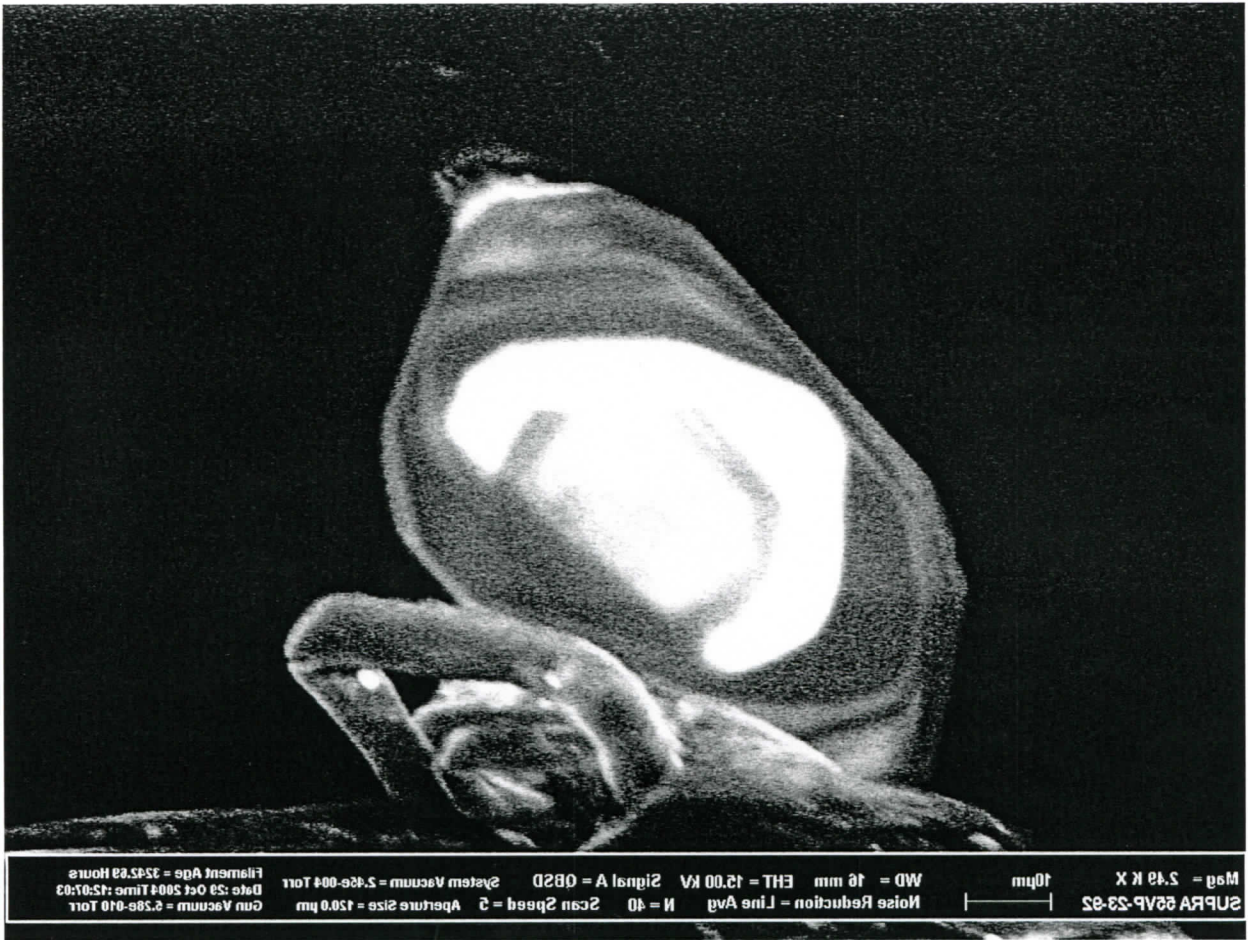
crn11_38.tiff
1024x768, 8bit, 768.2KB



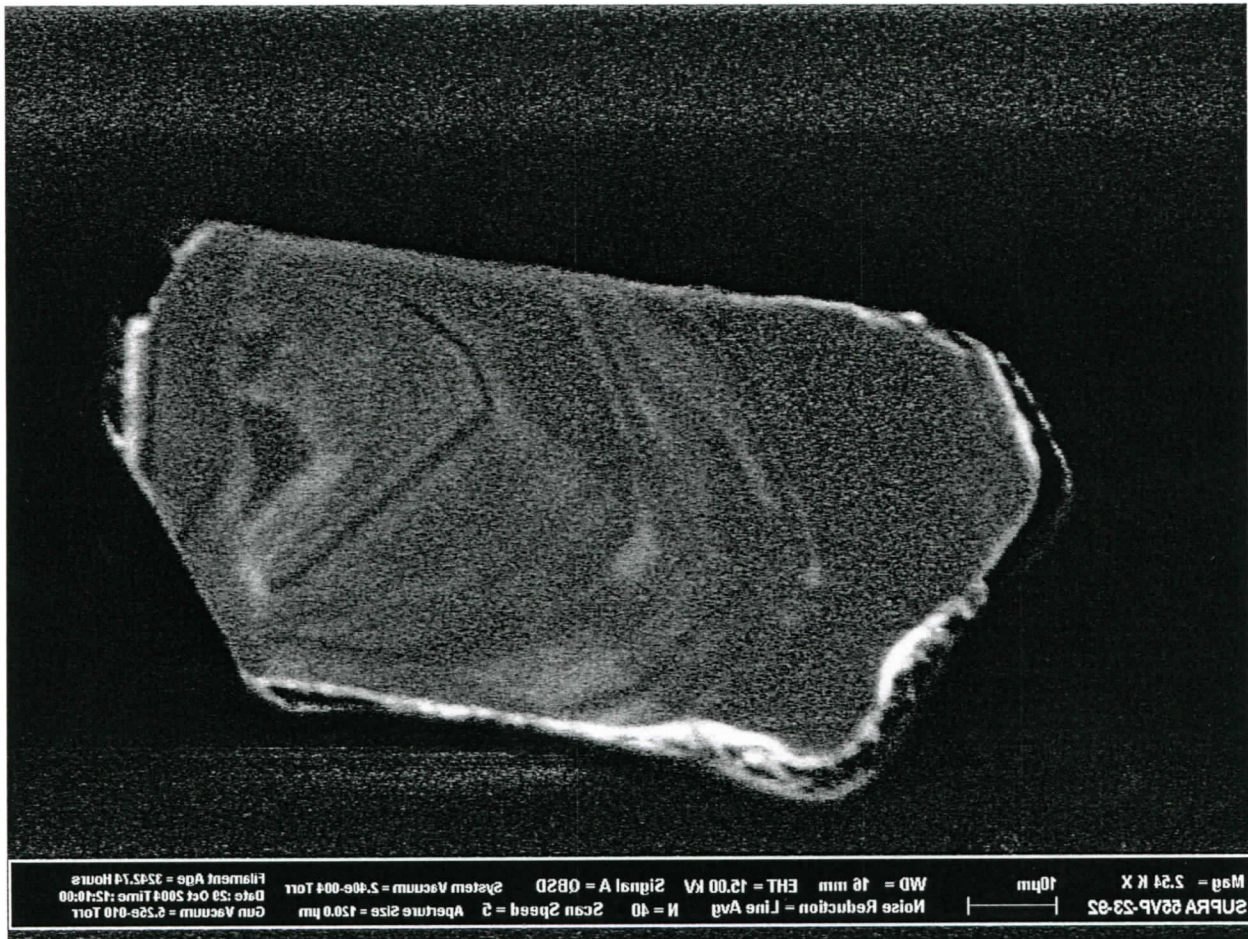
crn11_39.tiff
1024x768, 8bit, 768.2KB



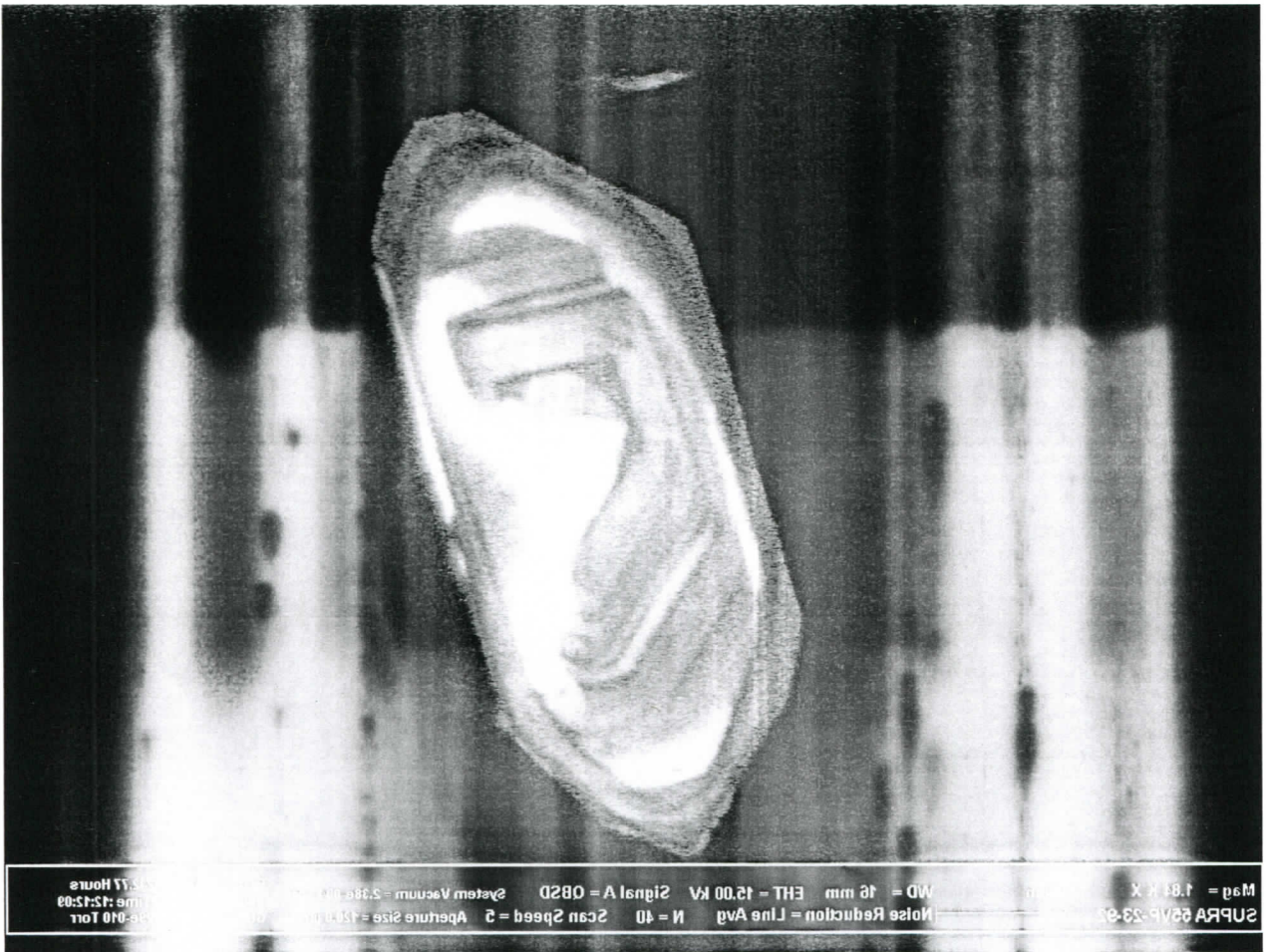
crn11_4.tiff
1024x768, 8bit, 768.2KB



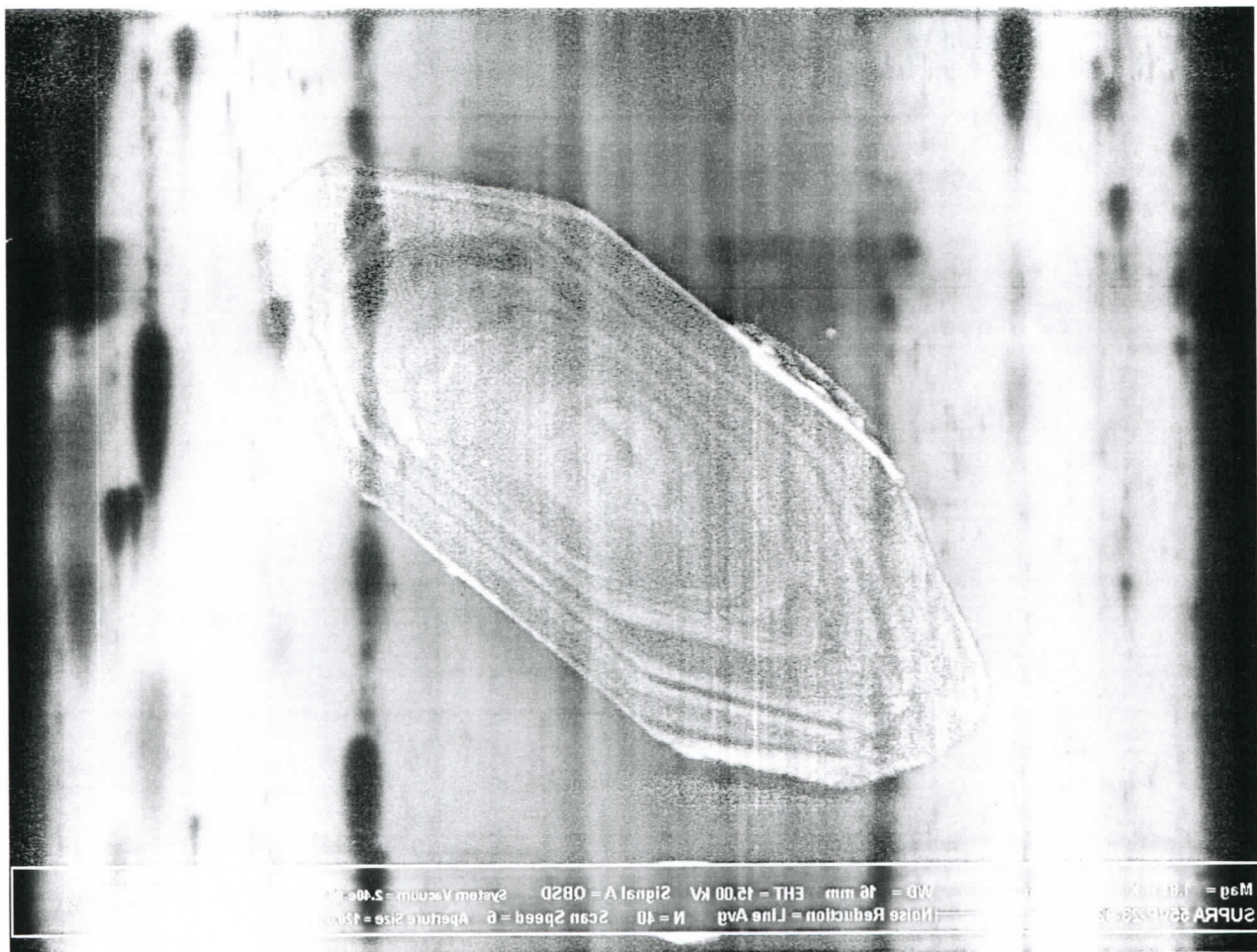
crn11_40.tiff
1024x768, 8bit, 768.2KB



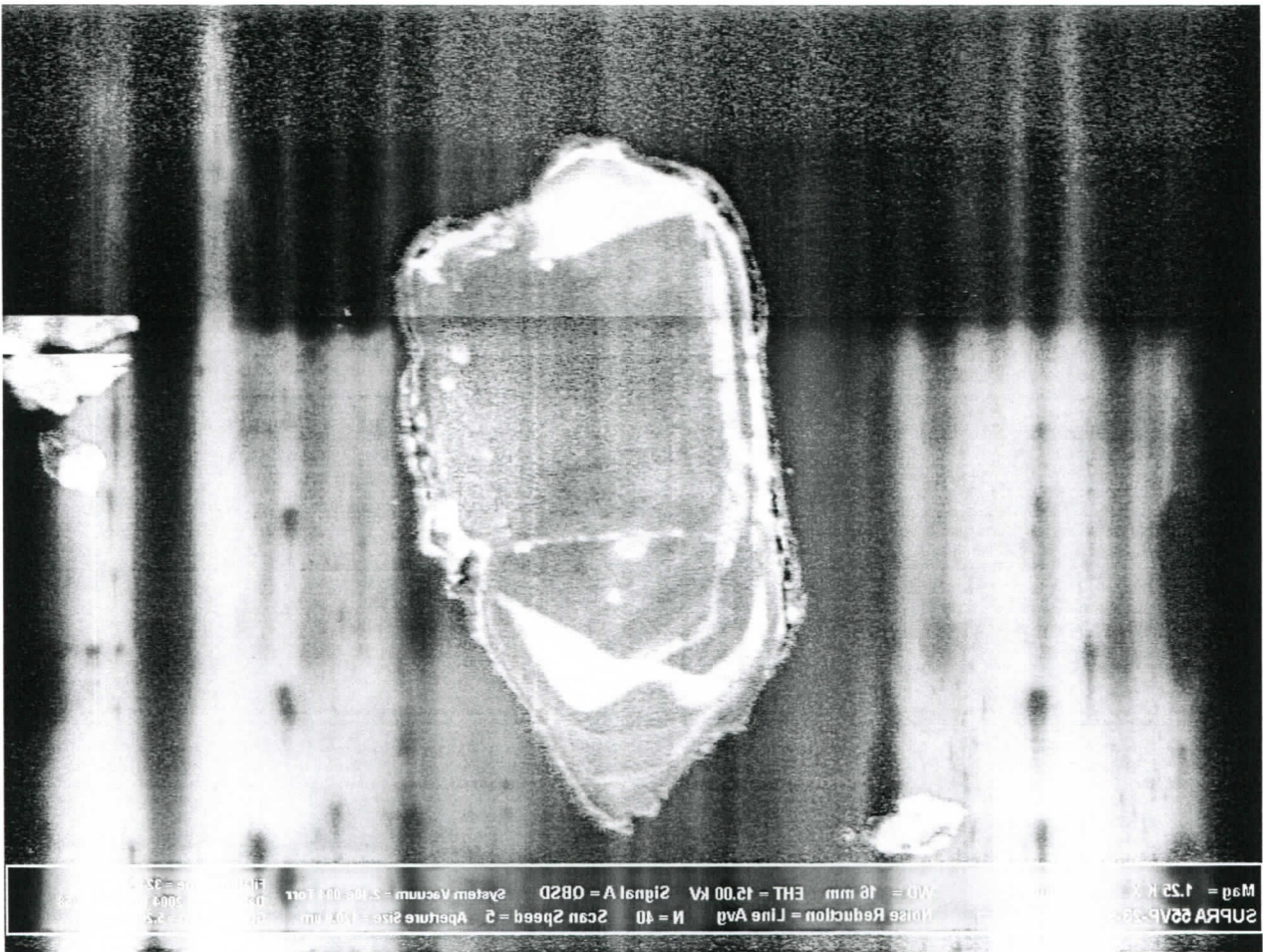
crn11_41.tiff
1024x768, 8bit, 768.2KB



crn11_42.tiff
1024x768, 8bit, 768.2KB



crn11_43.tiff
1024x768, 8bit, 768.2KB



Magn = 1.25 K X
WD = 16 mm EHT = 12.00 kV Signal A = 082D System Vacuum = 2.10e-004 Torr
Noise Reduction = Line Avg N = 40 Scan Speed = 5 Aperture Size = 100 um

crn11_44.tiff
1024x768, 8bit, 768.2KB



Magn = 1.25 K X
WD = 16 mm EHT = 12.00 kV Signal A = 082D System Vacuum = 2.10e-004 Torr
Noise Reduction = Line Avg N = 40 Scan Speed = 5 Aperture Size = 100 um

crn11_5.tiff
1024x768, 8bit, 768.2KB