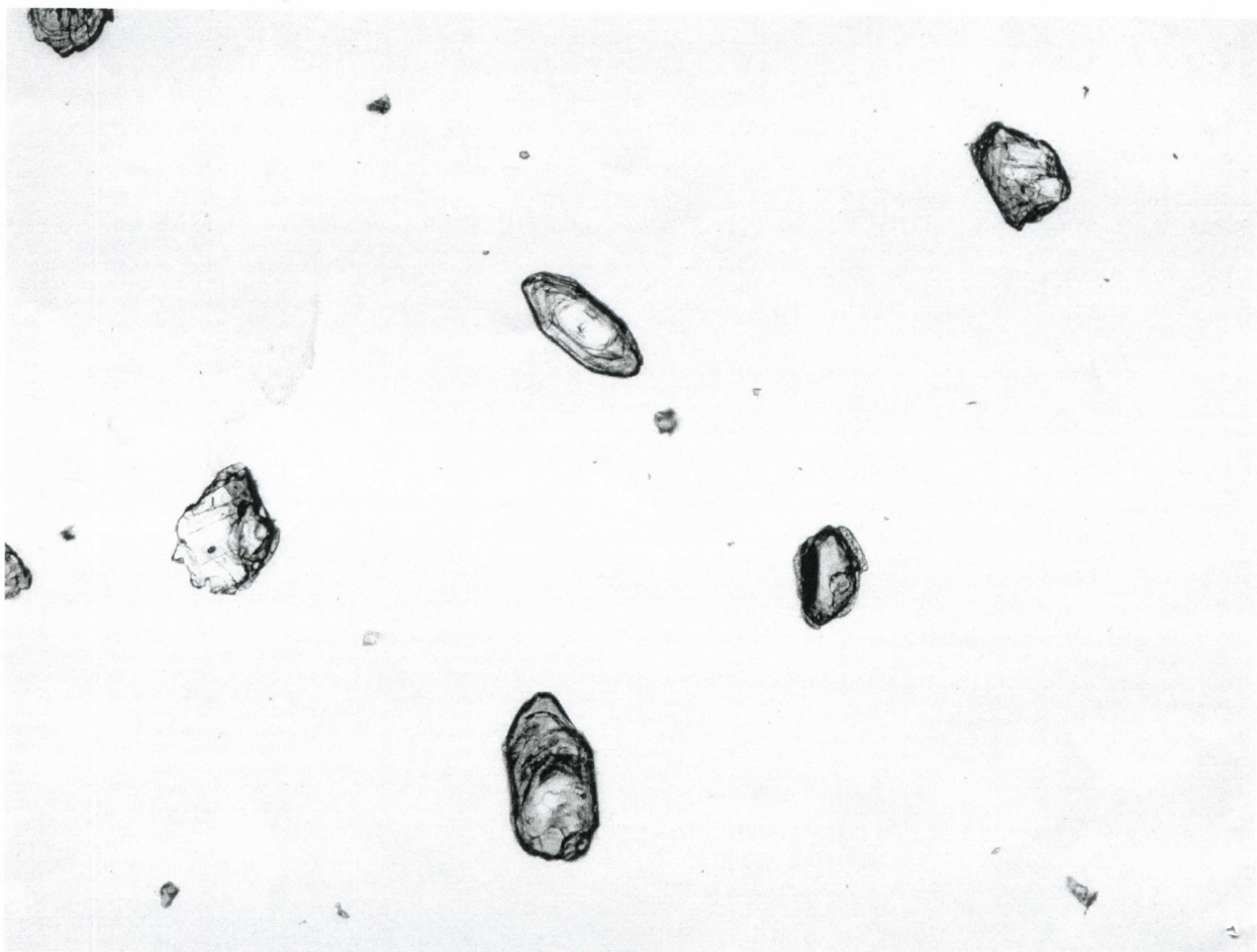


59

2059x1544, 32bit, 493.5KB

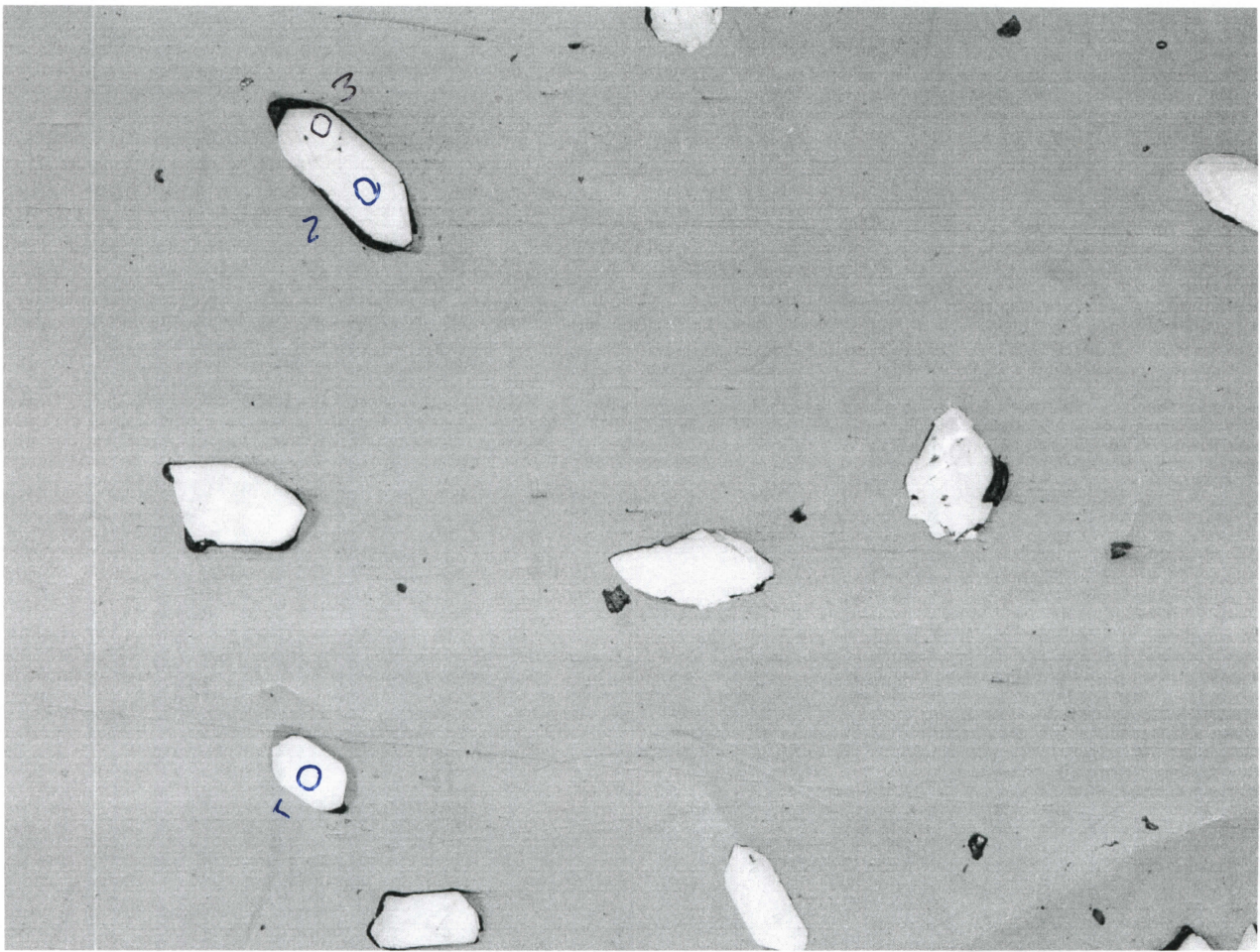
B1



43,44

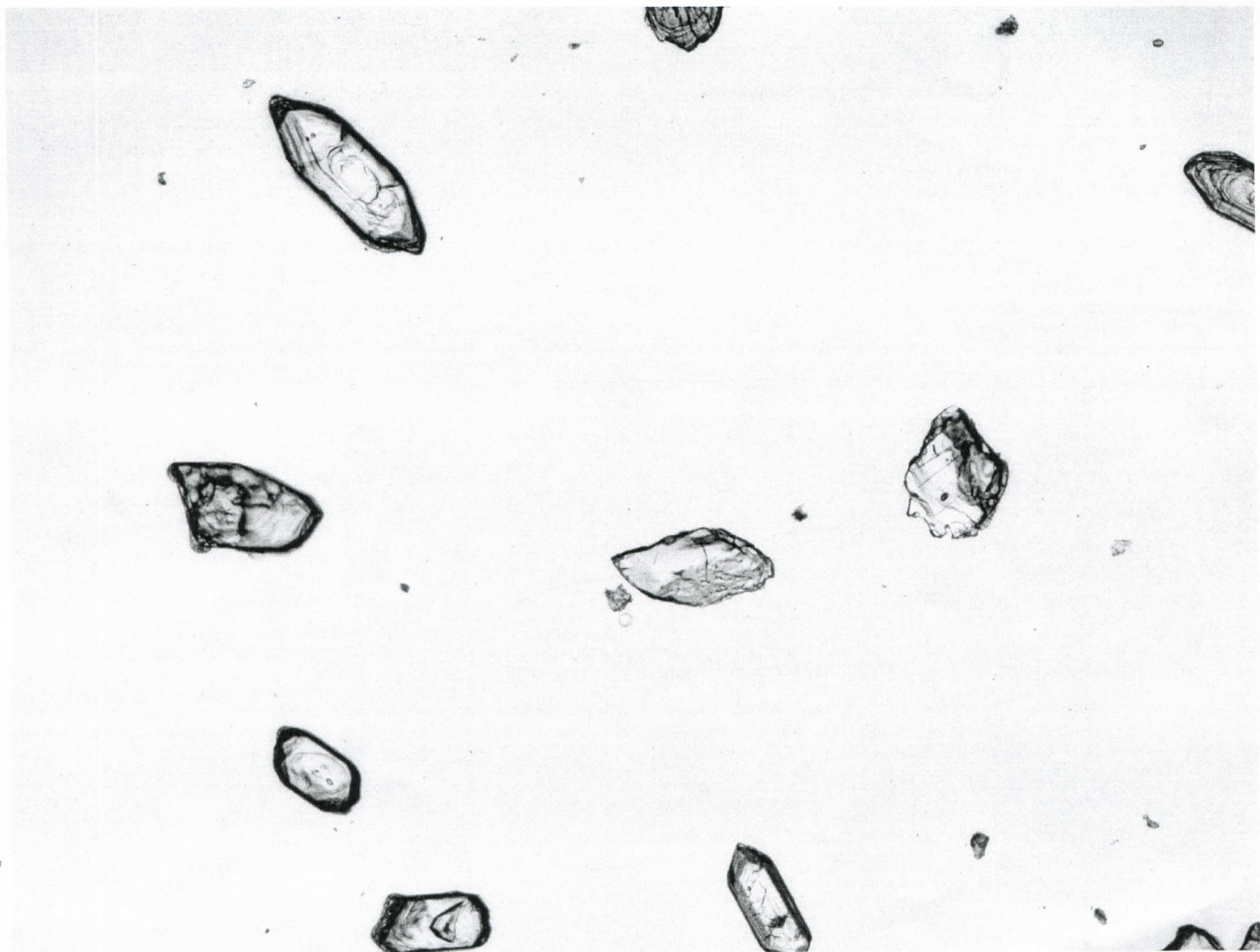
60

B1



57
2059x1544, 32bit, 585.6KB

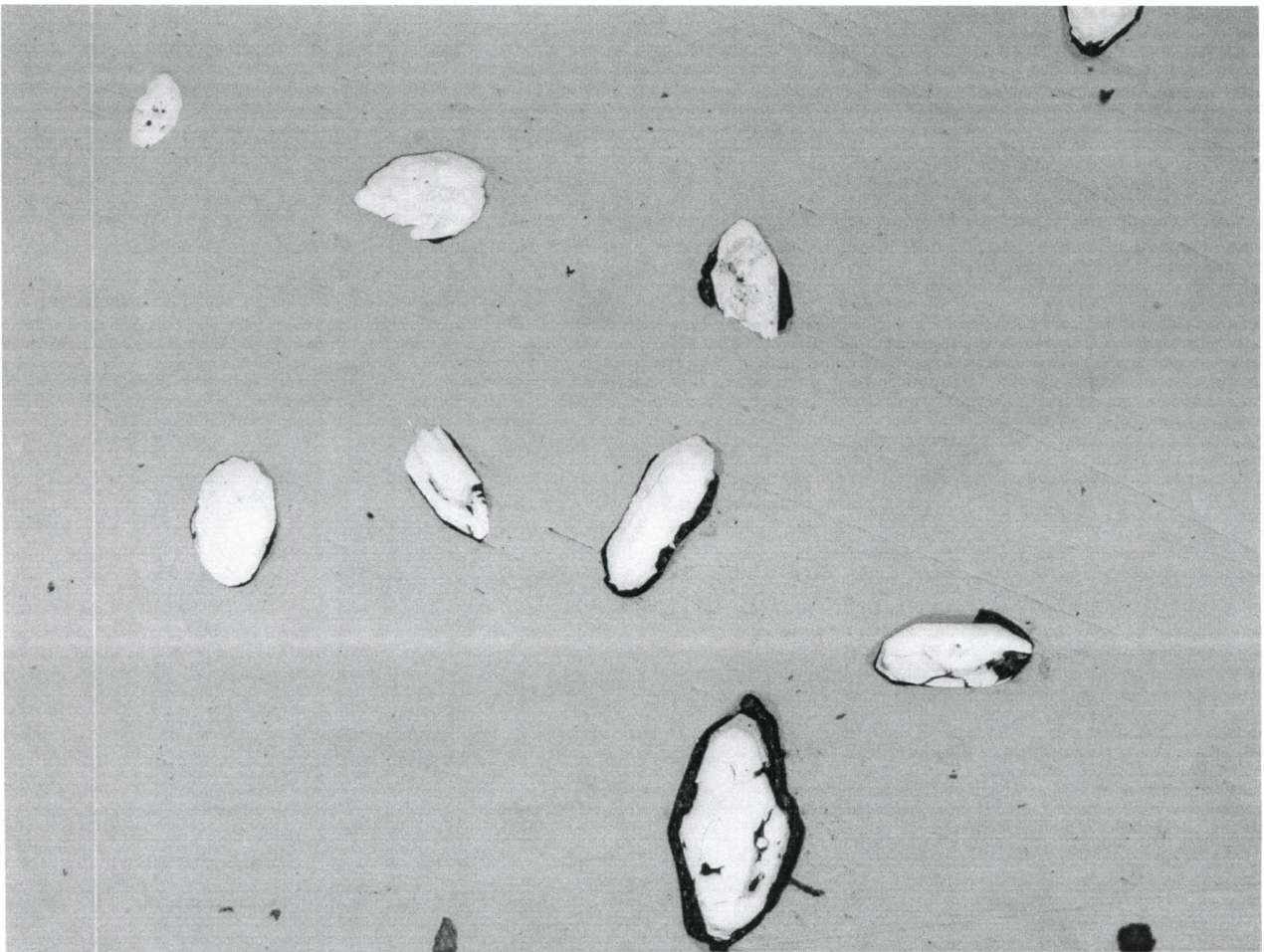
B2



58
2059x1544, 32bit, 356.7KB

2h
1h'017
38'8E

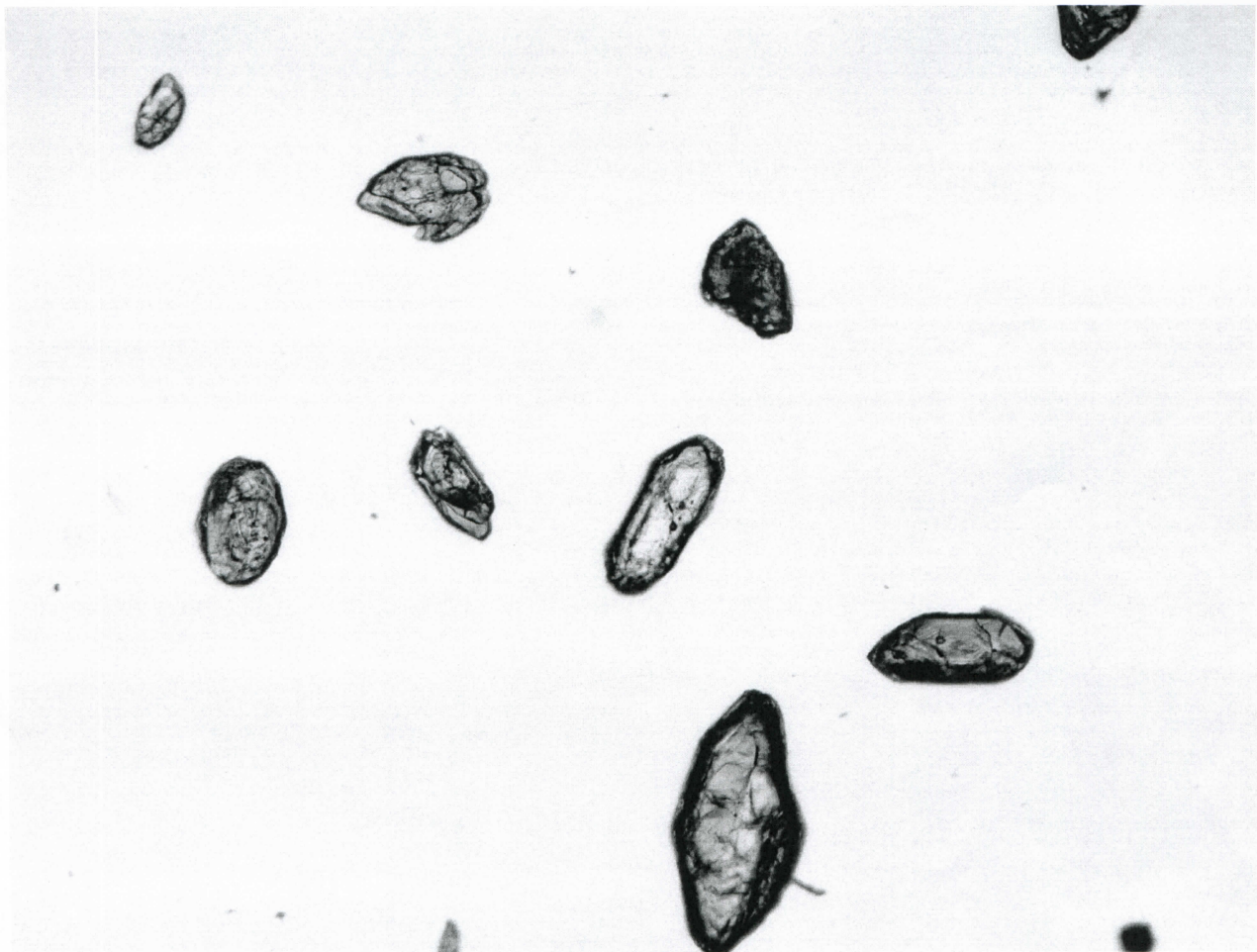
B2



55

2059x1544, 32bit, 584.9KB

55

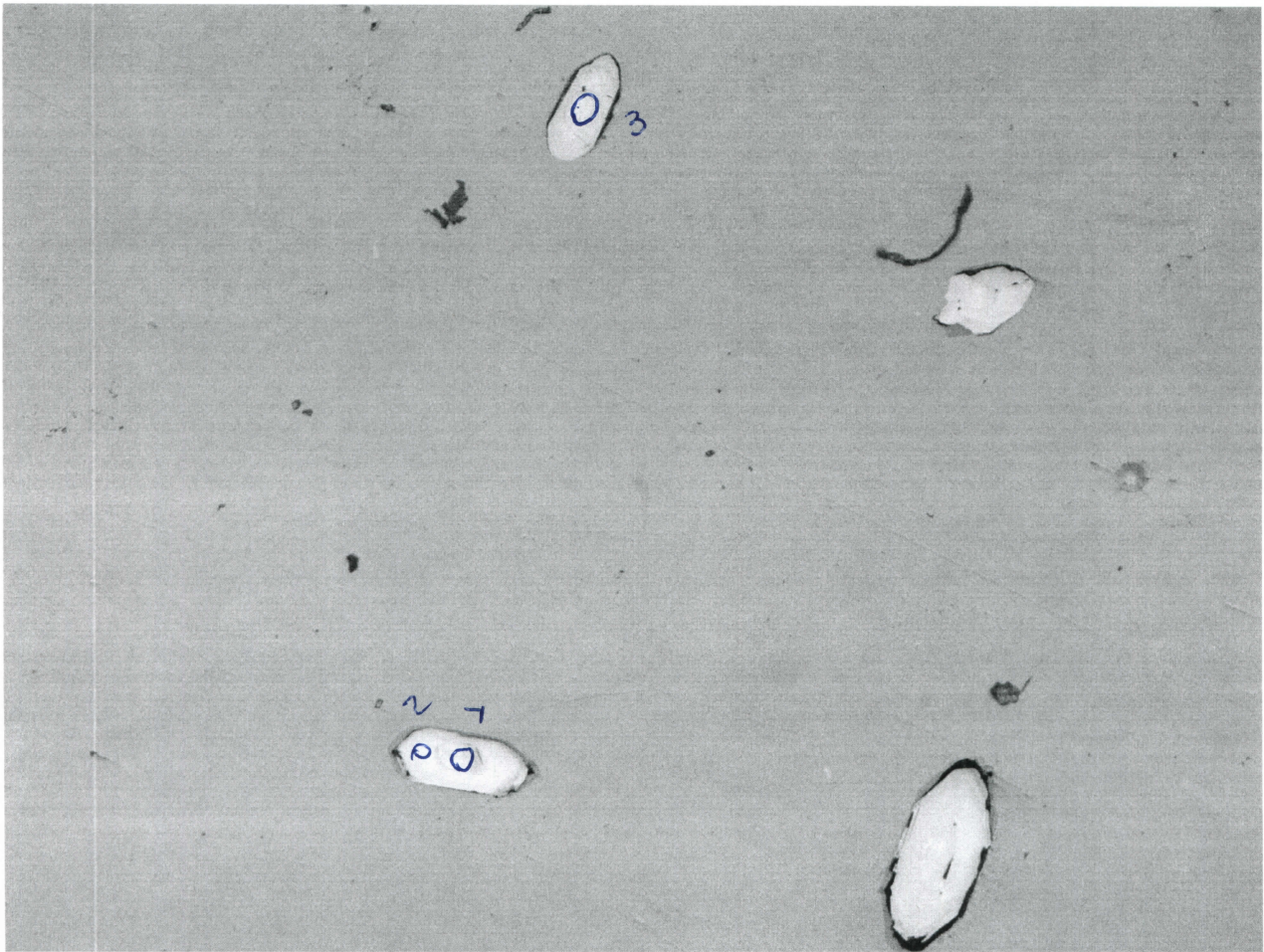


56

2059x1544, 32bit, 340.0KB

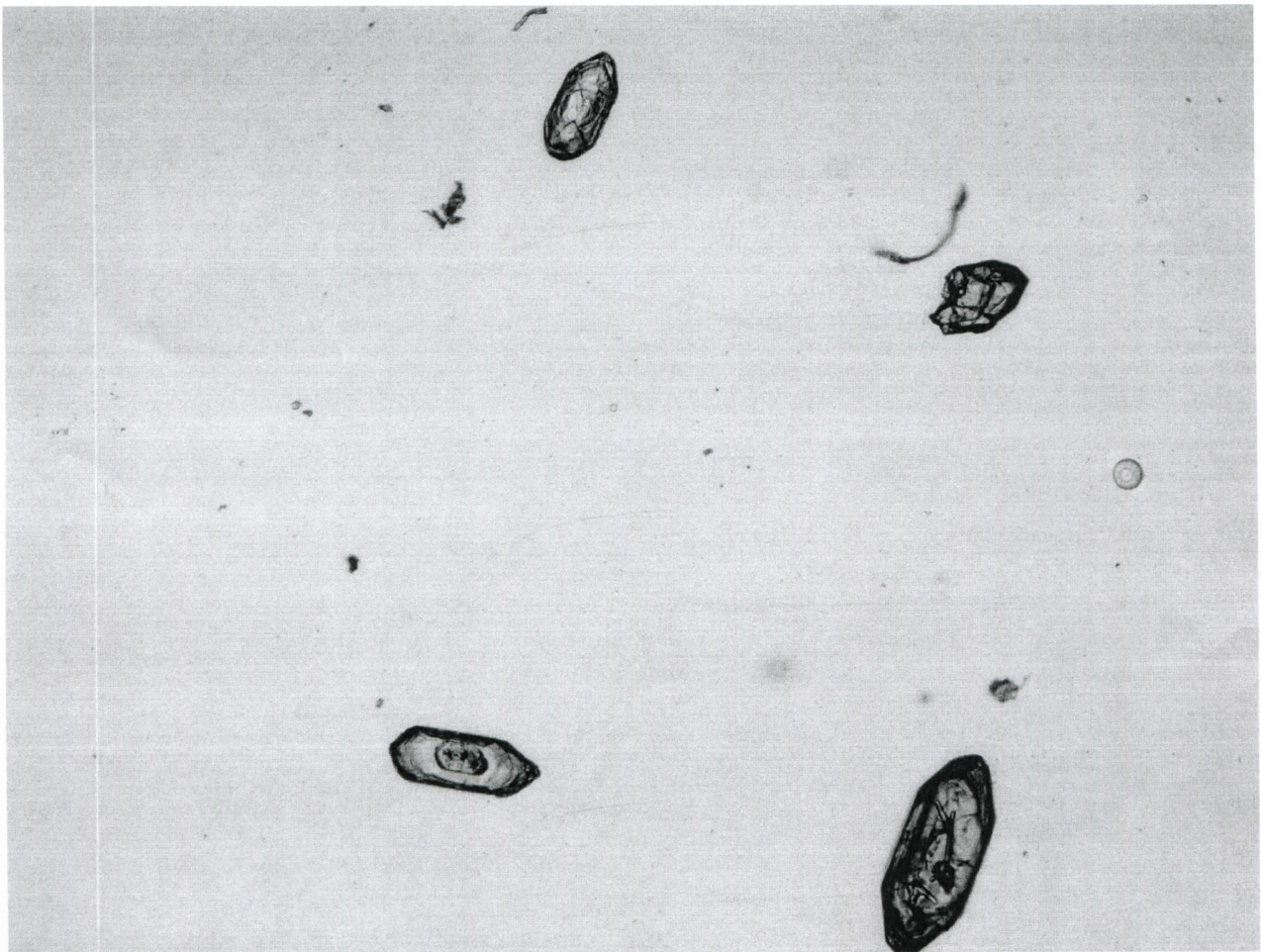
35,36

56



53
2059x1544, 32bit, 504.5KB

h9

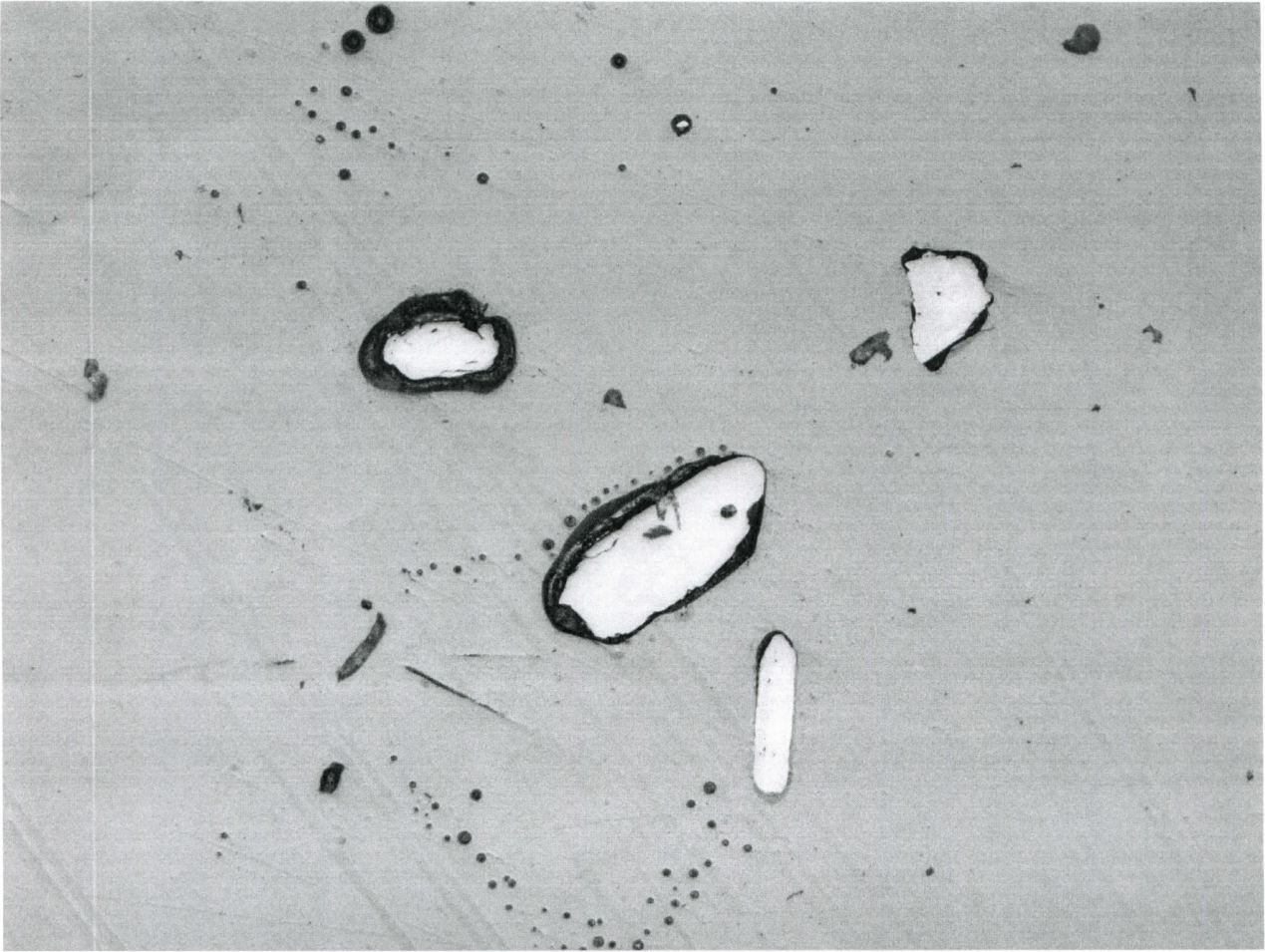


54
2059x1544, 32bit, 421.5KB

32/33
39

h9

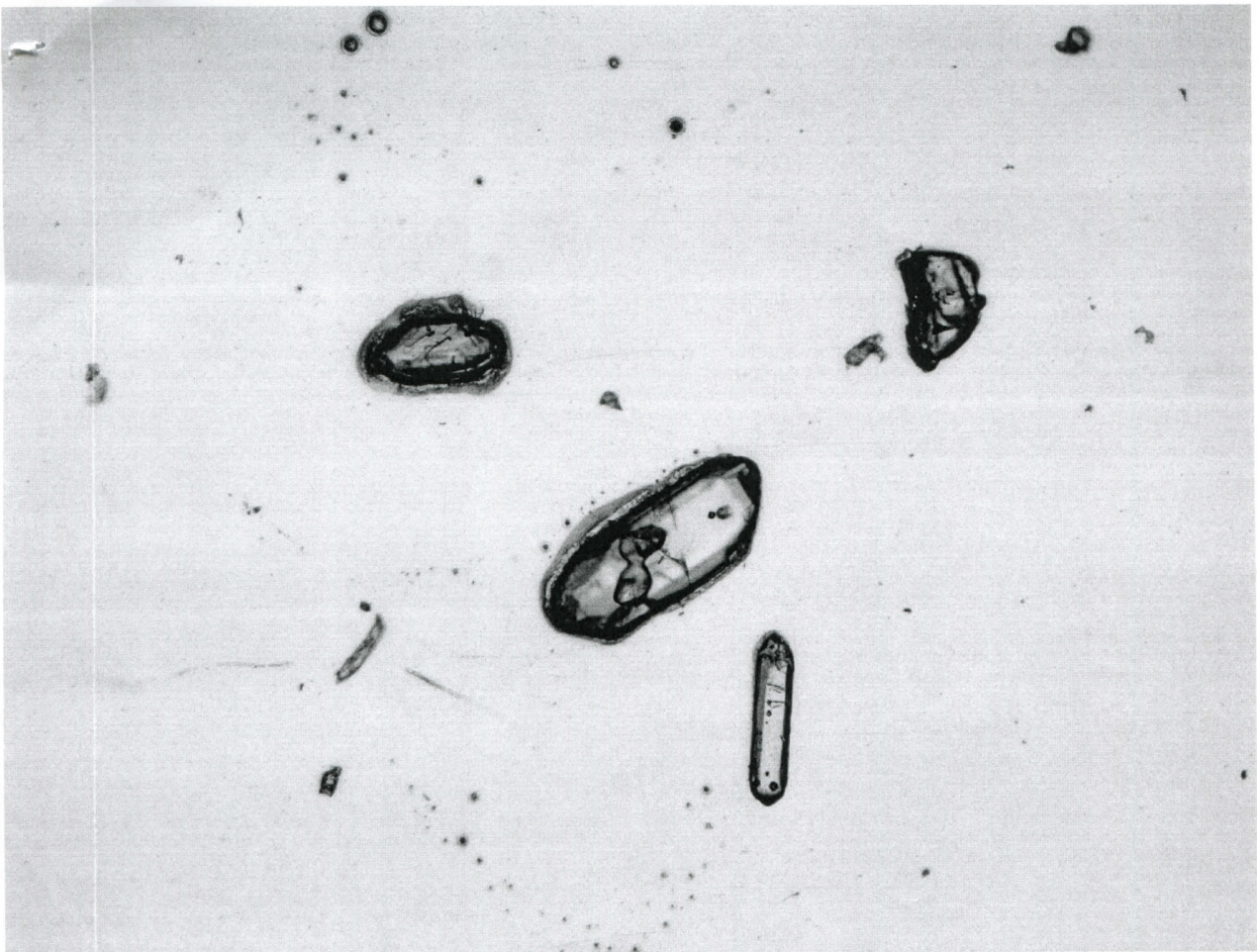
BS



51

2059x1544, 32bit, 579.9KB

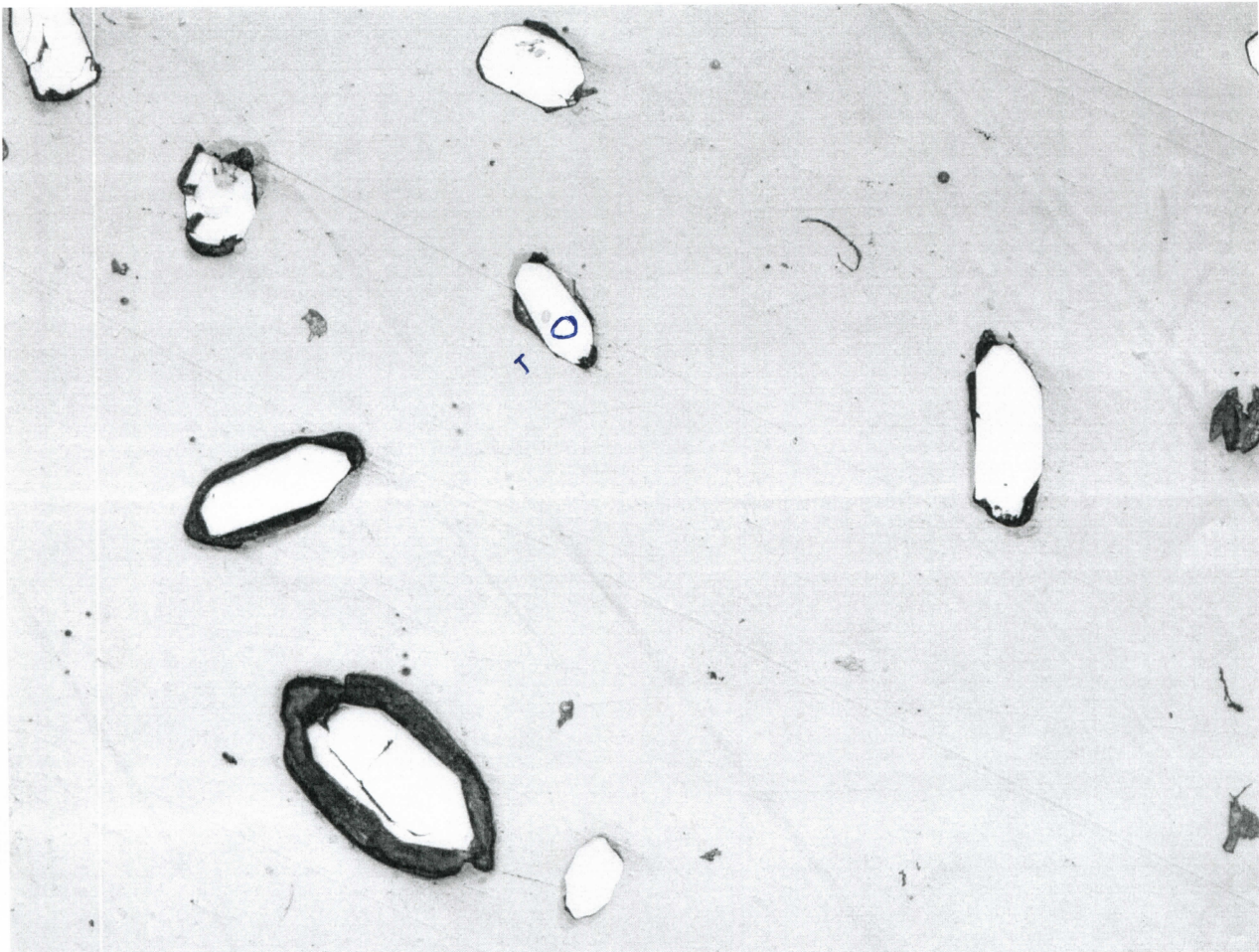
BS



52

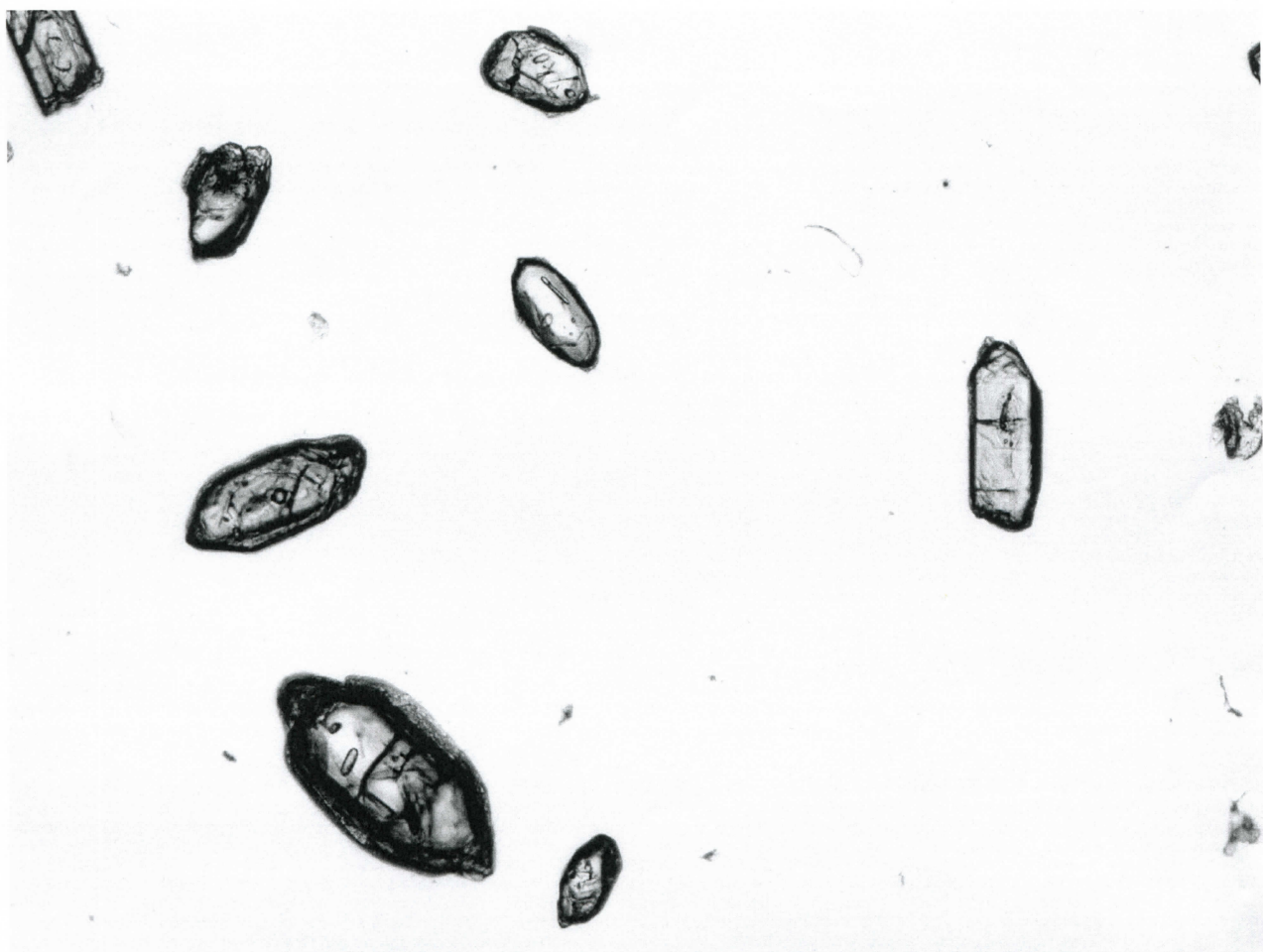
2059x1544, 32bit, 437.6KB

18



47
2059x1544, 32bit, 536.9KB

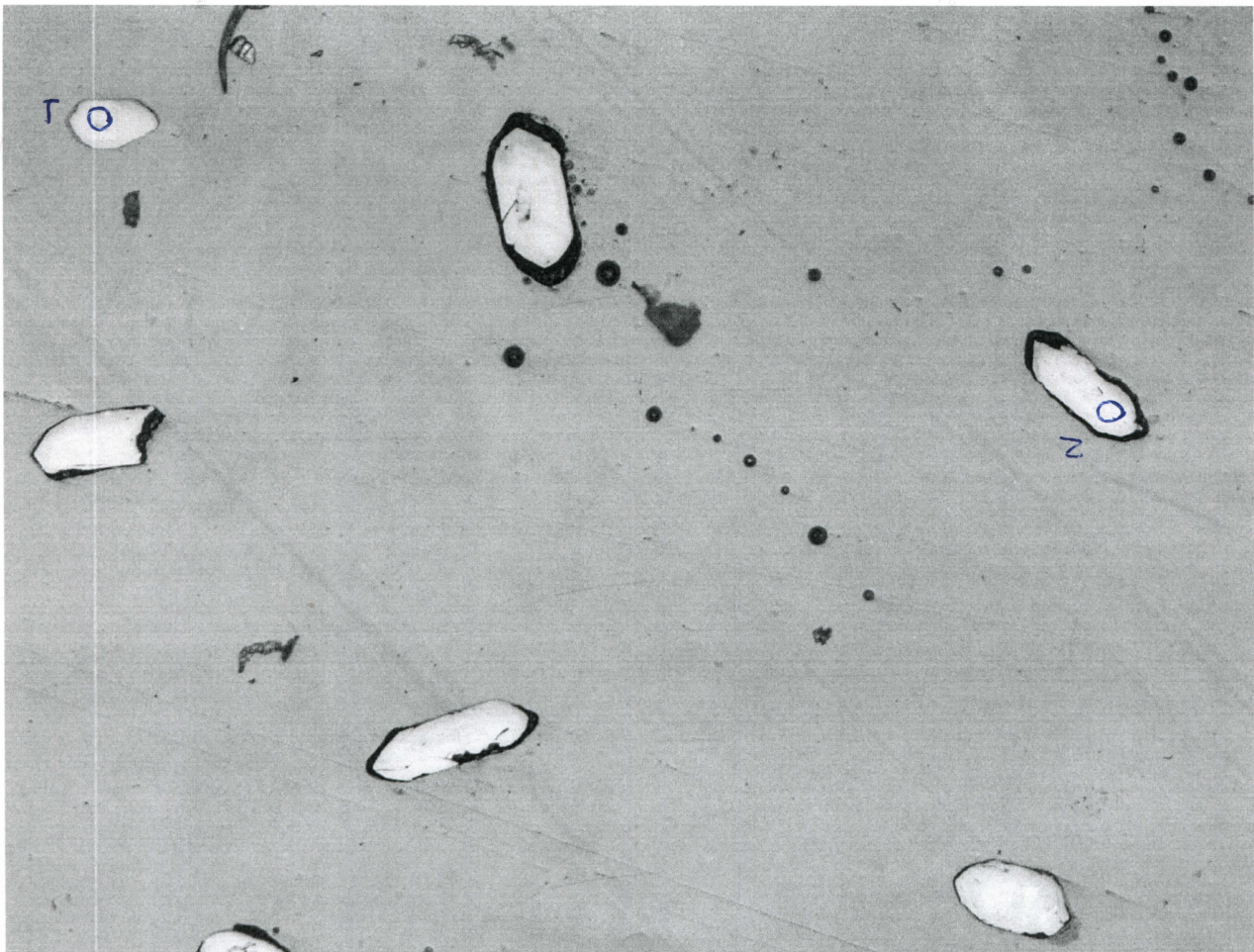
dg



92
52' h2

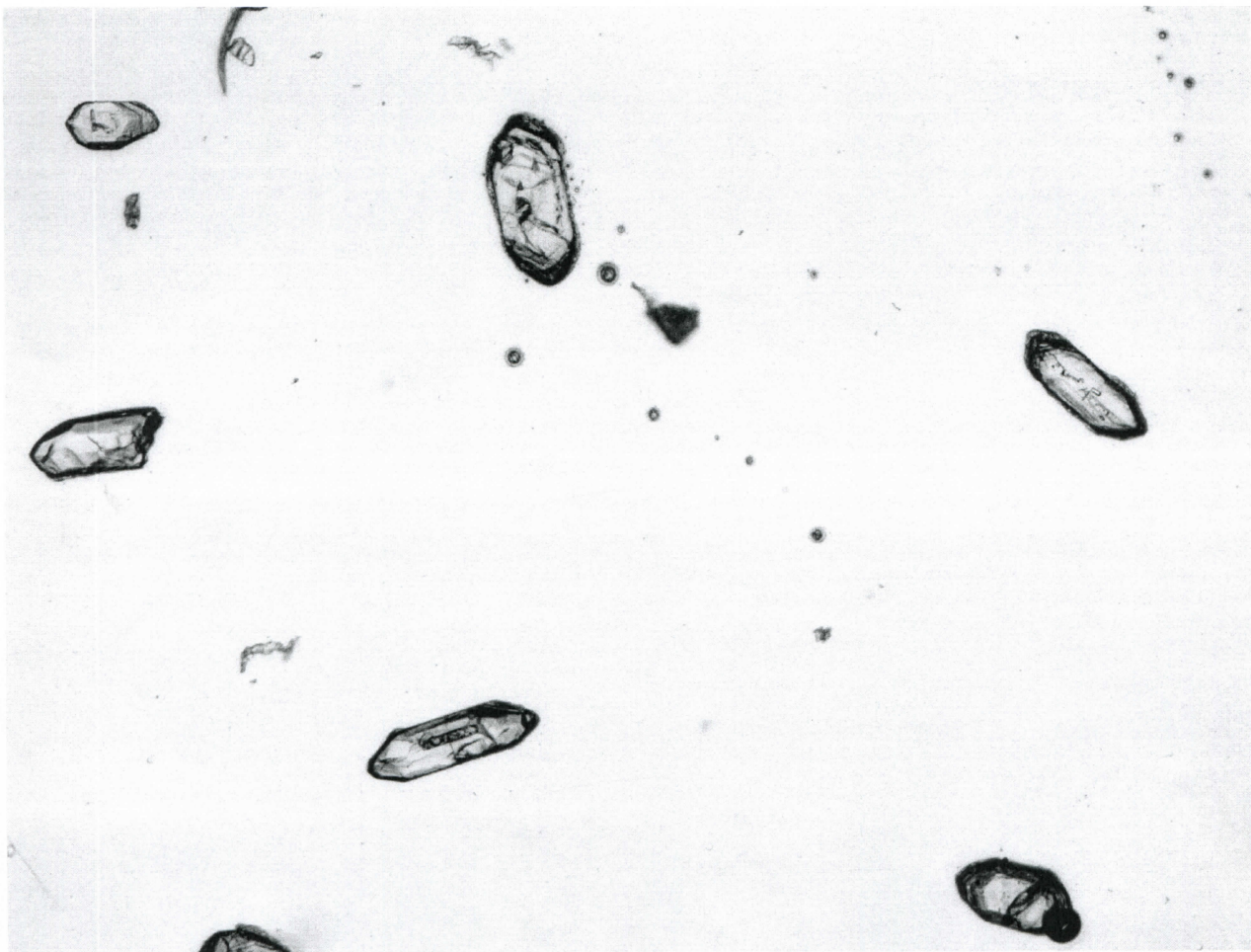
48

dg



49
2059x1544, 32bit, 561.5KB

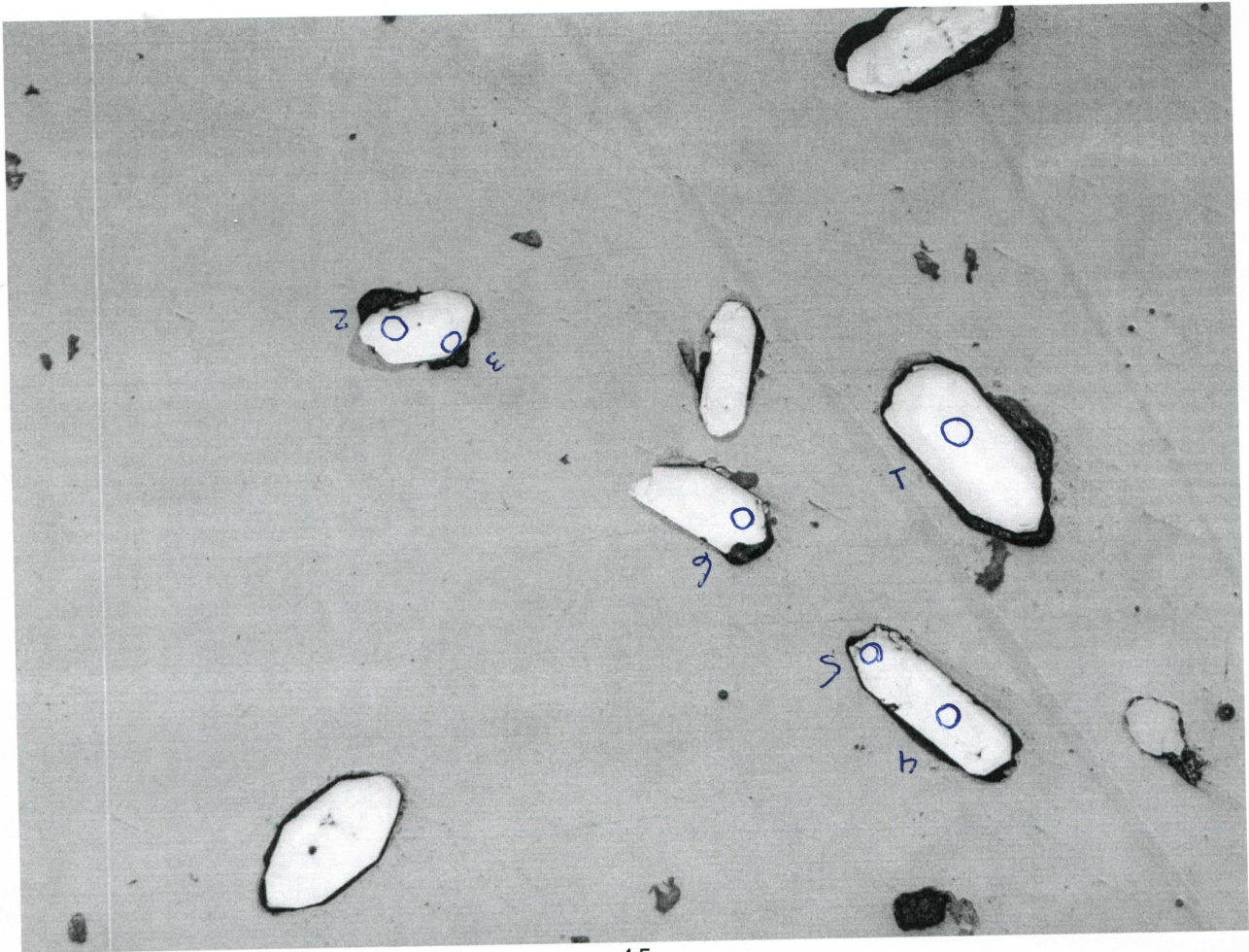
tj



50
2059x1544, 32bit, 361.0KB

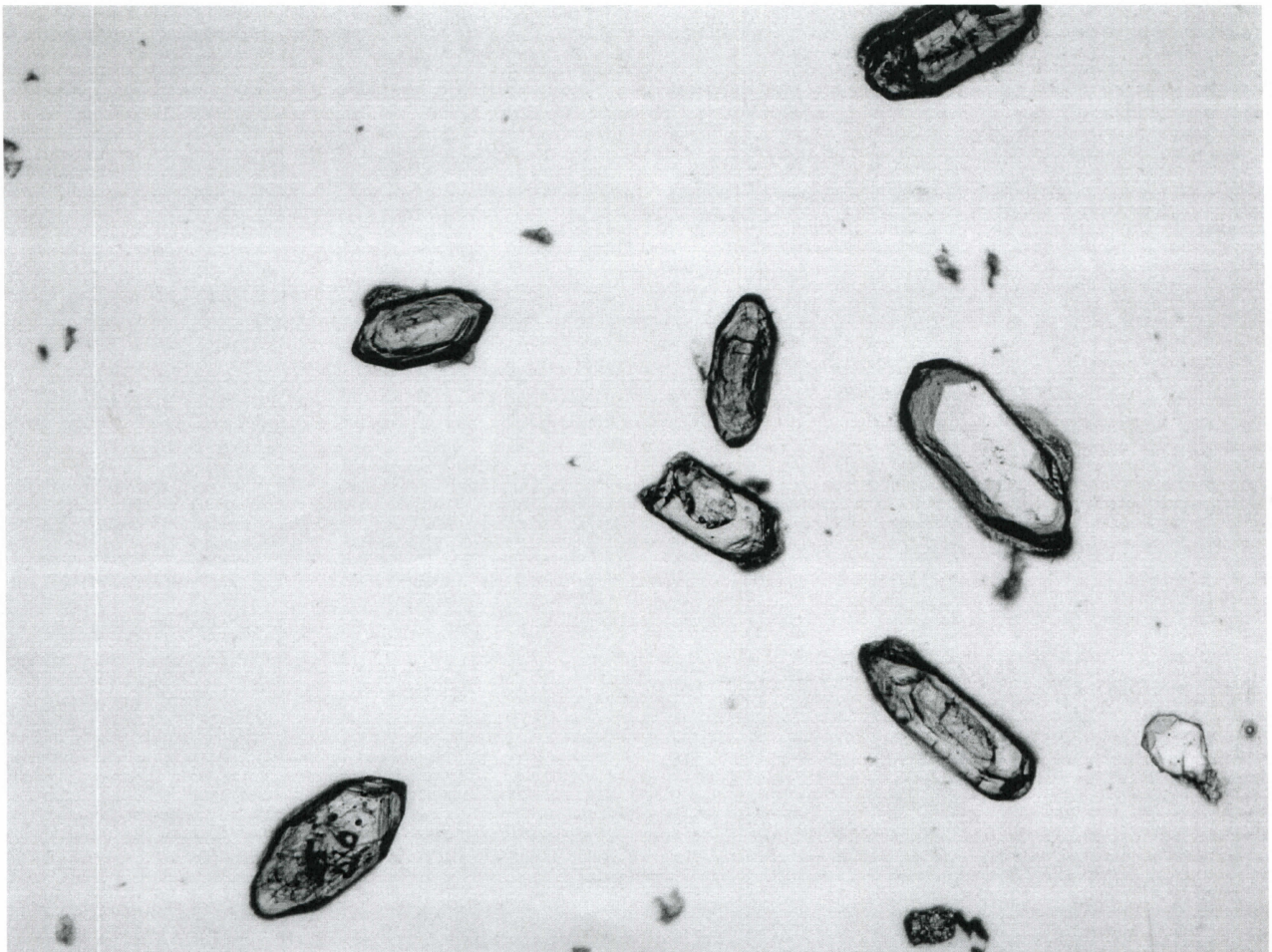
29 '30
29 '30

tj



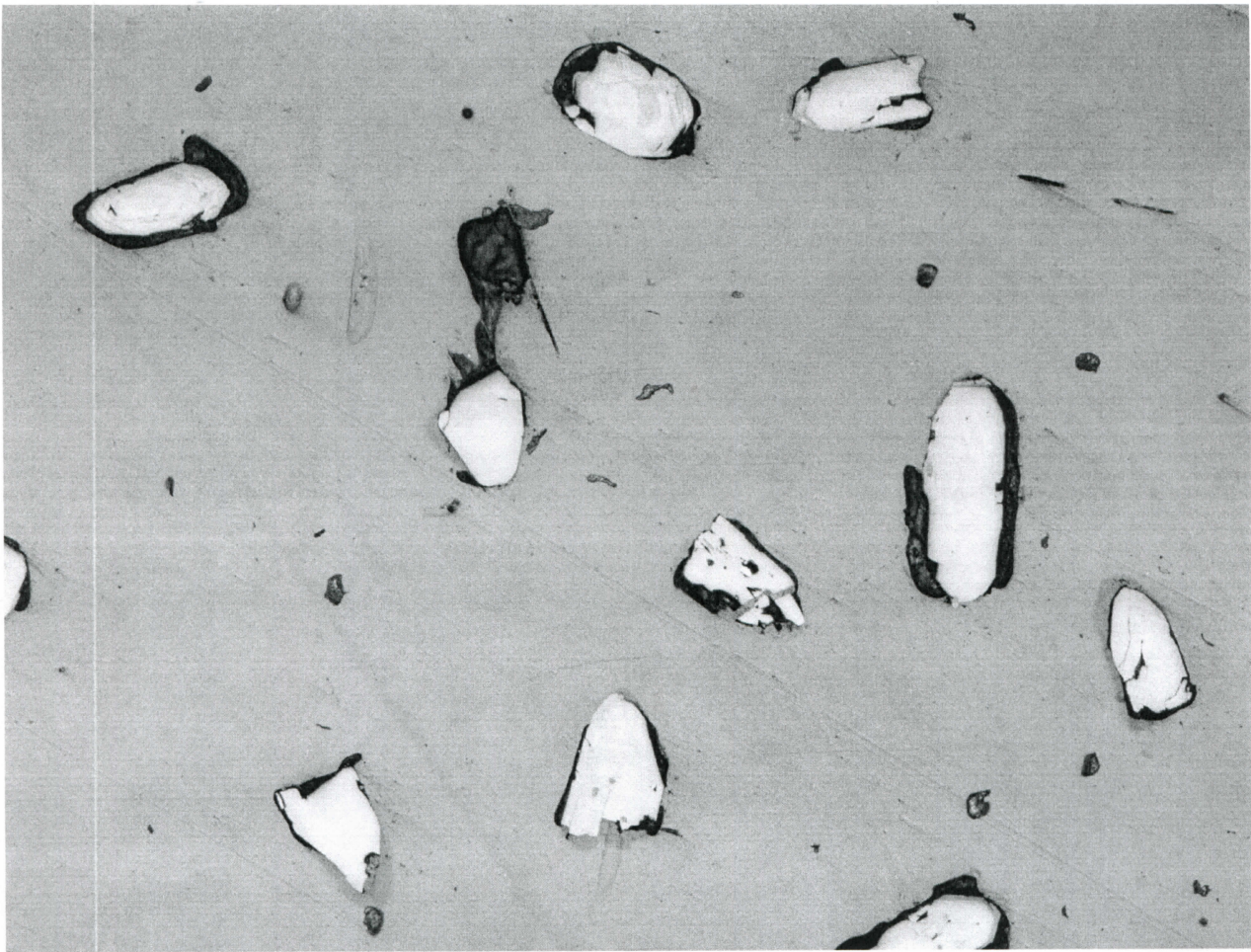
45
2059x1544, 32bit, 587.7KB

88



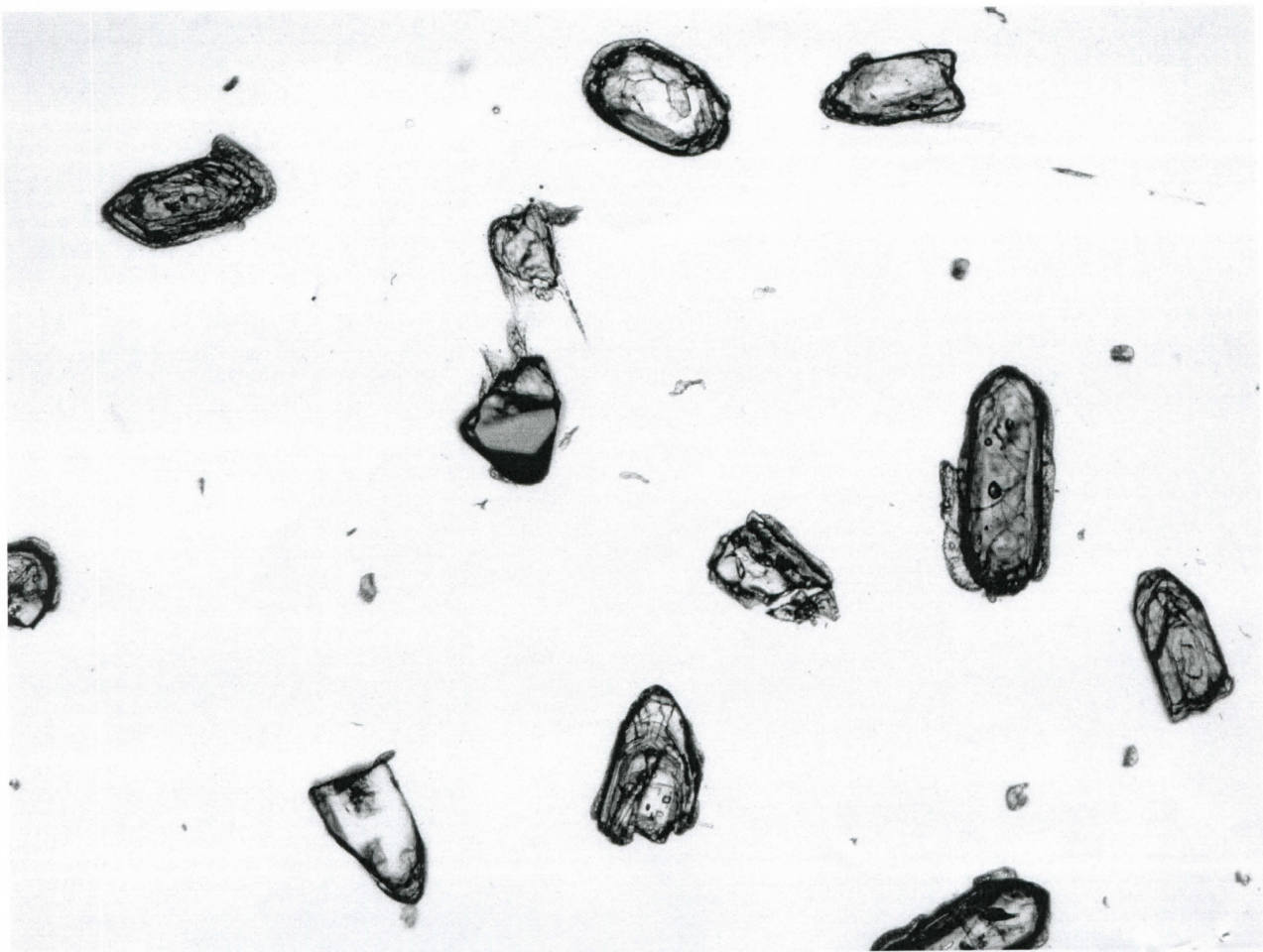
19, 20
21, 22/23

88



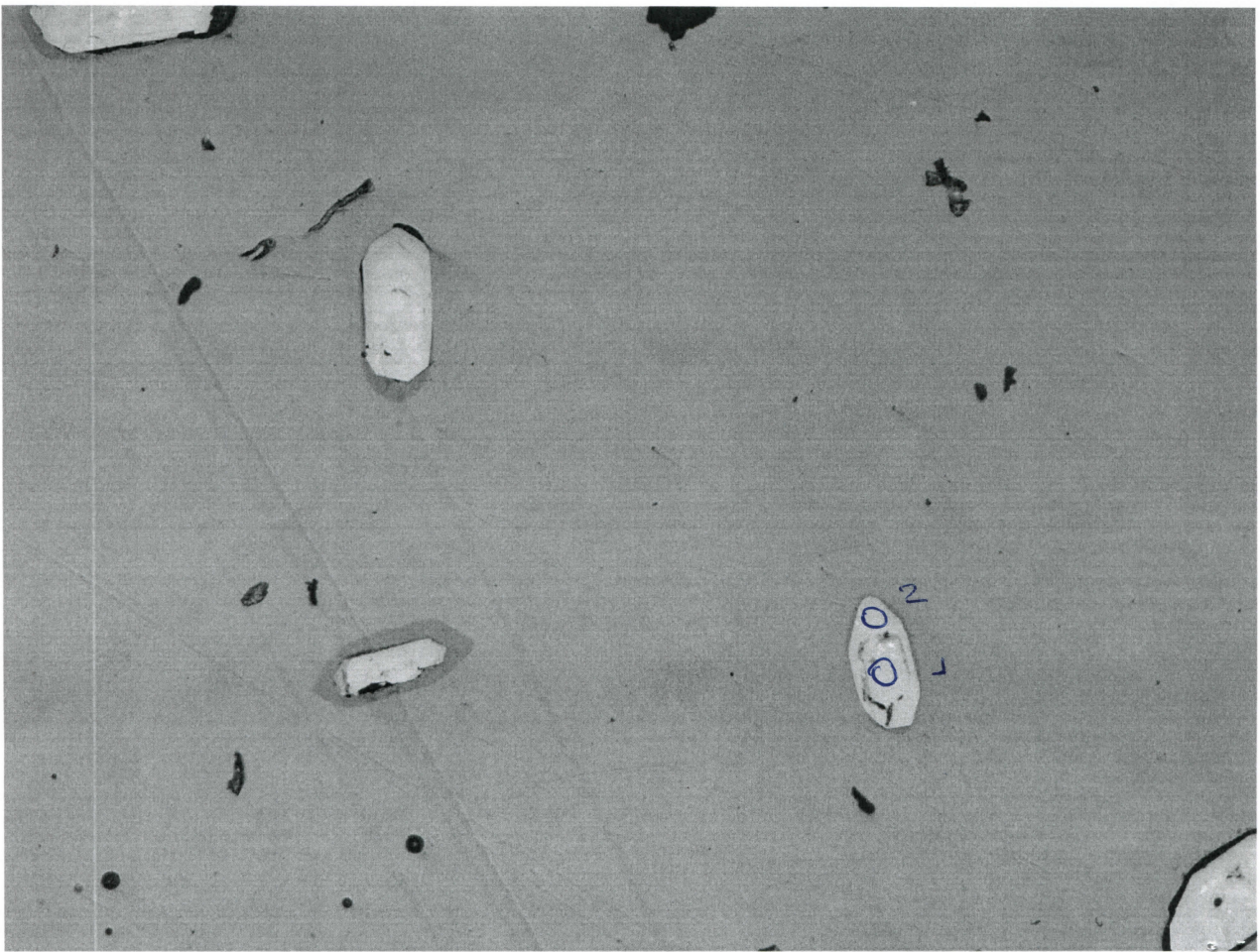
43
2059x1544, 32bit, 702.1KB

69



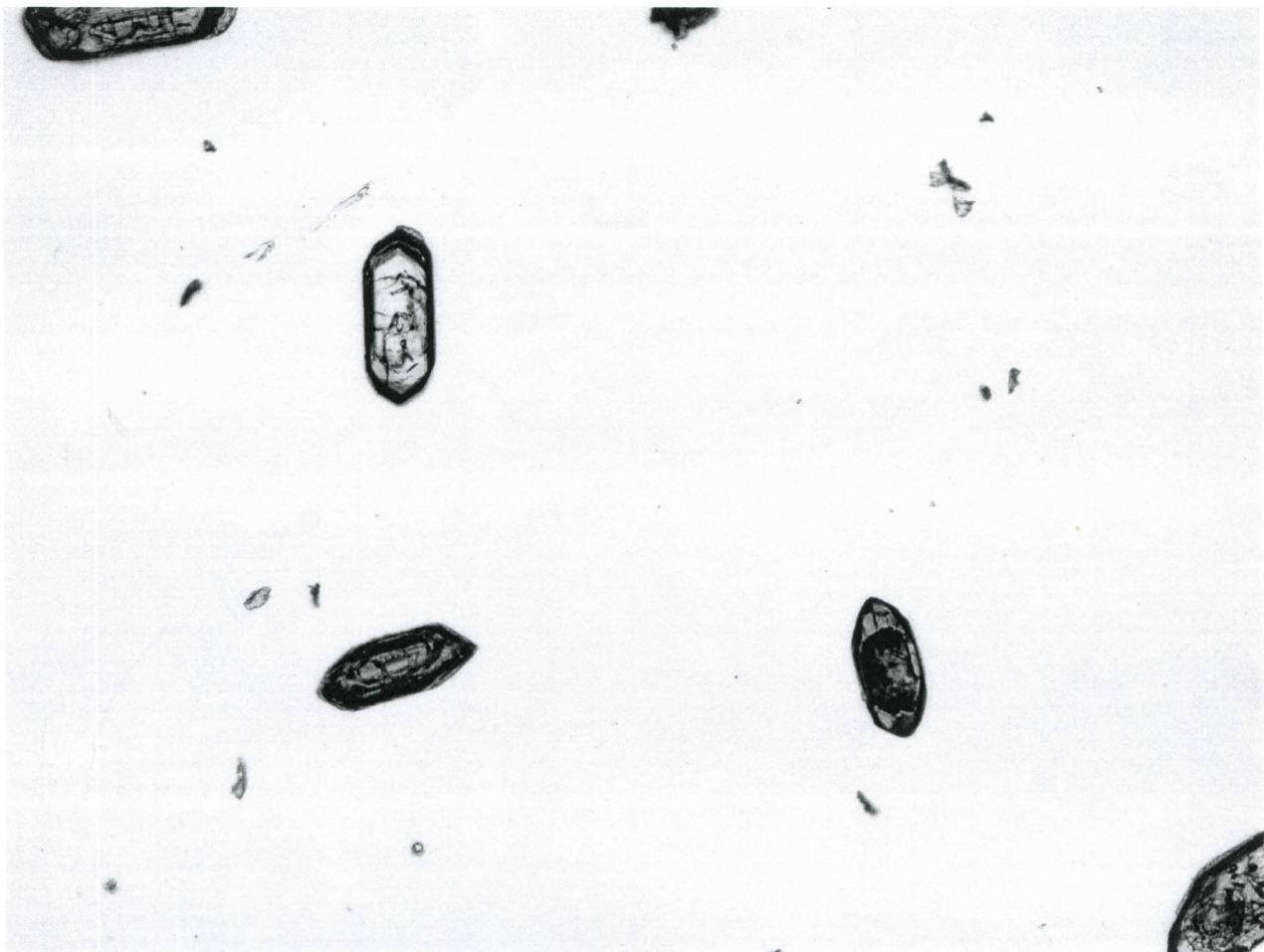
A, 100

69



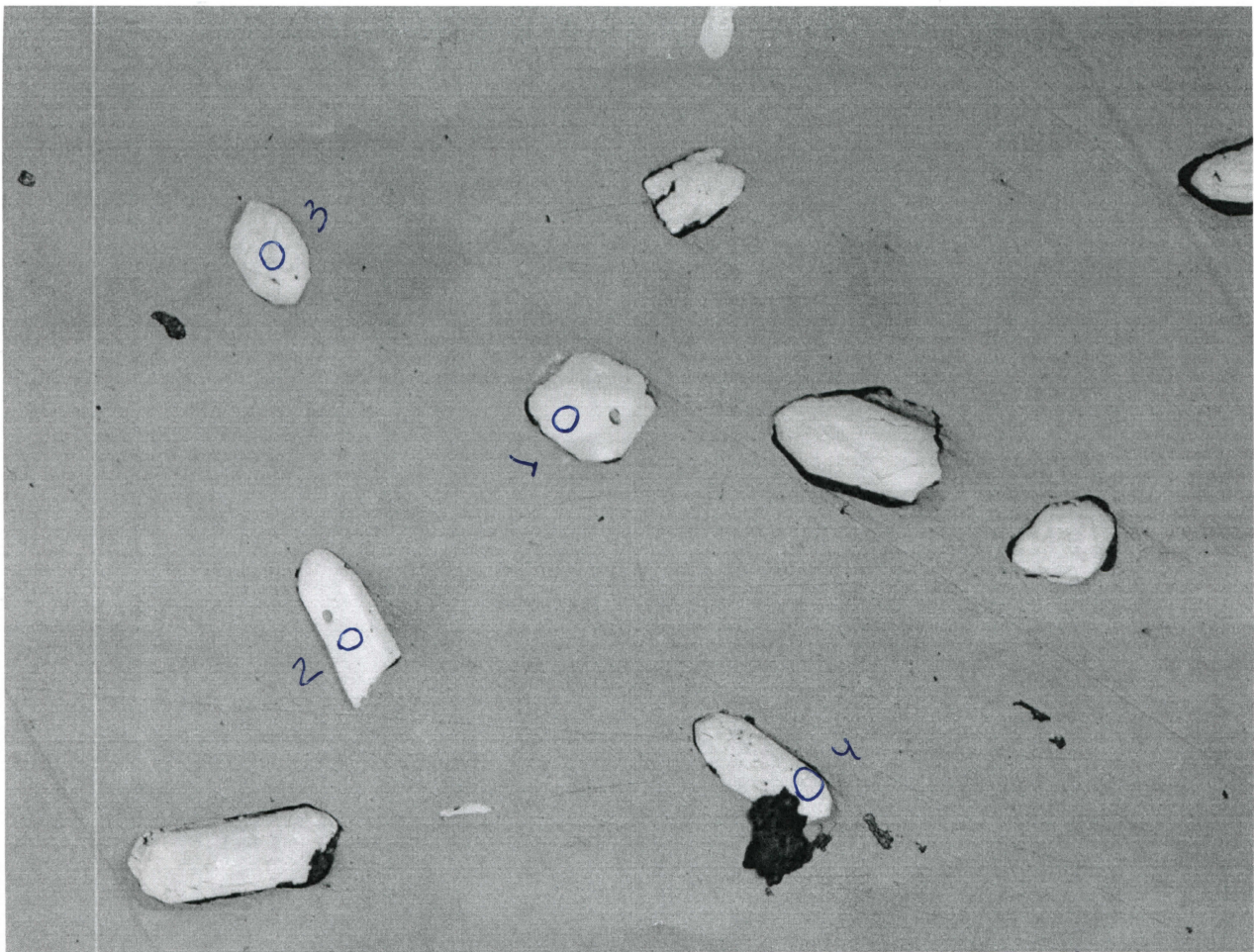
019

39
2059x1544, 32bit, 559.6KB



15/16

019



41
2059x1544, 32bit, 571.5KB

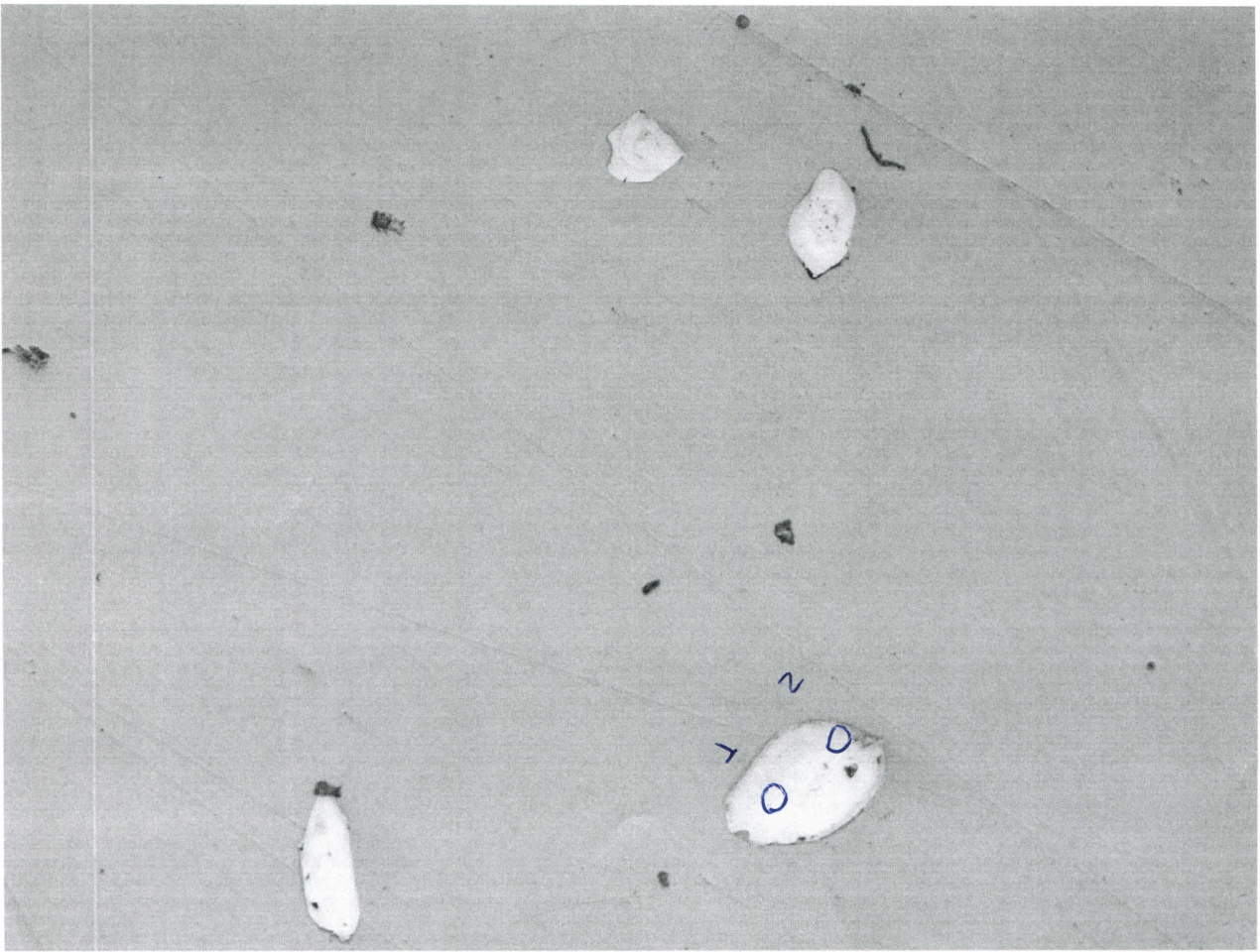
TTQ



h/131
'21/12
a' b

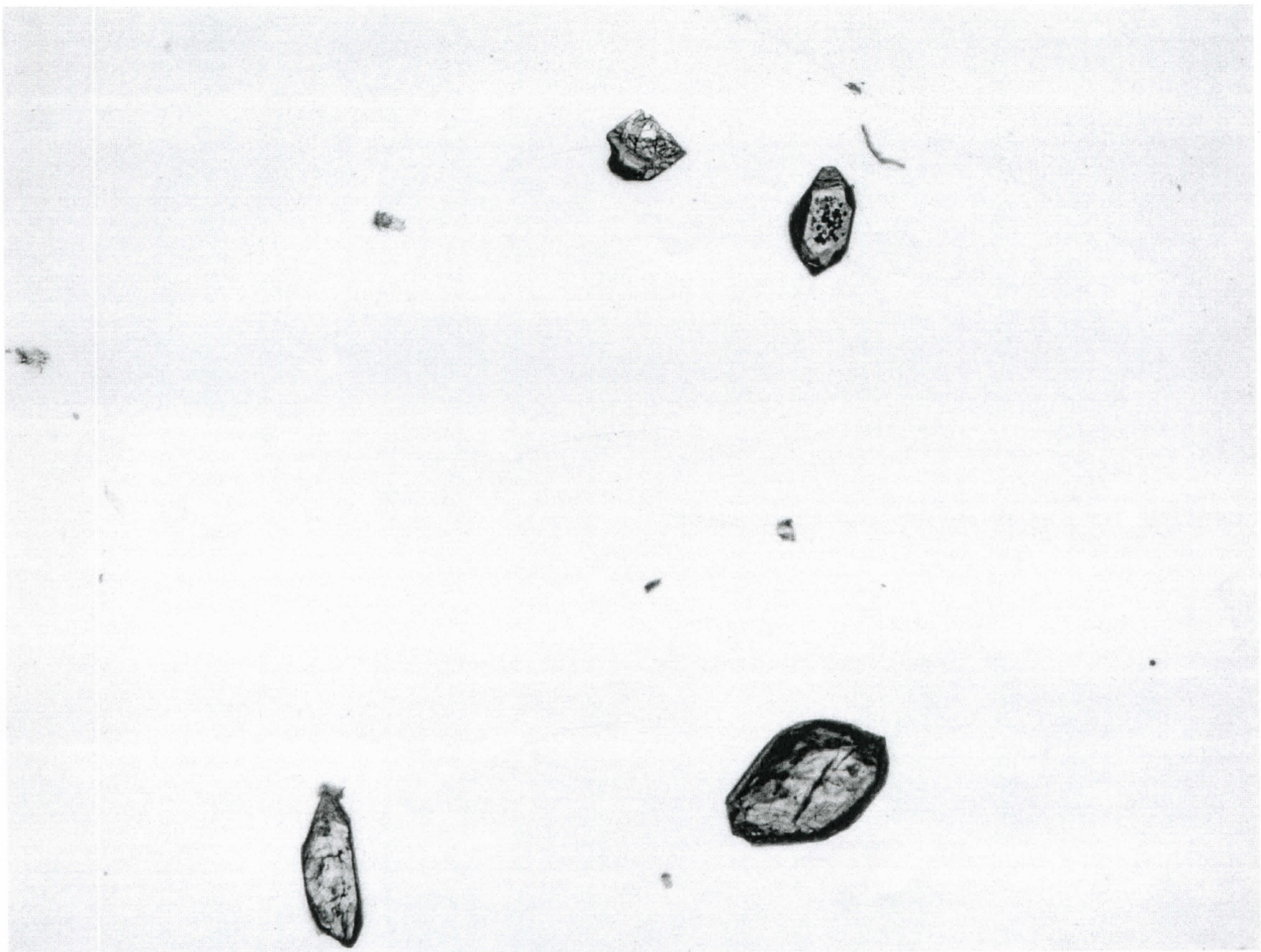
42

TTQ



37
2059x1544, 32bit, 494.6KB

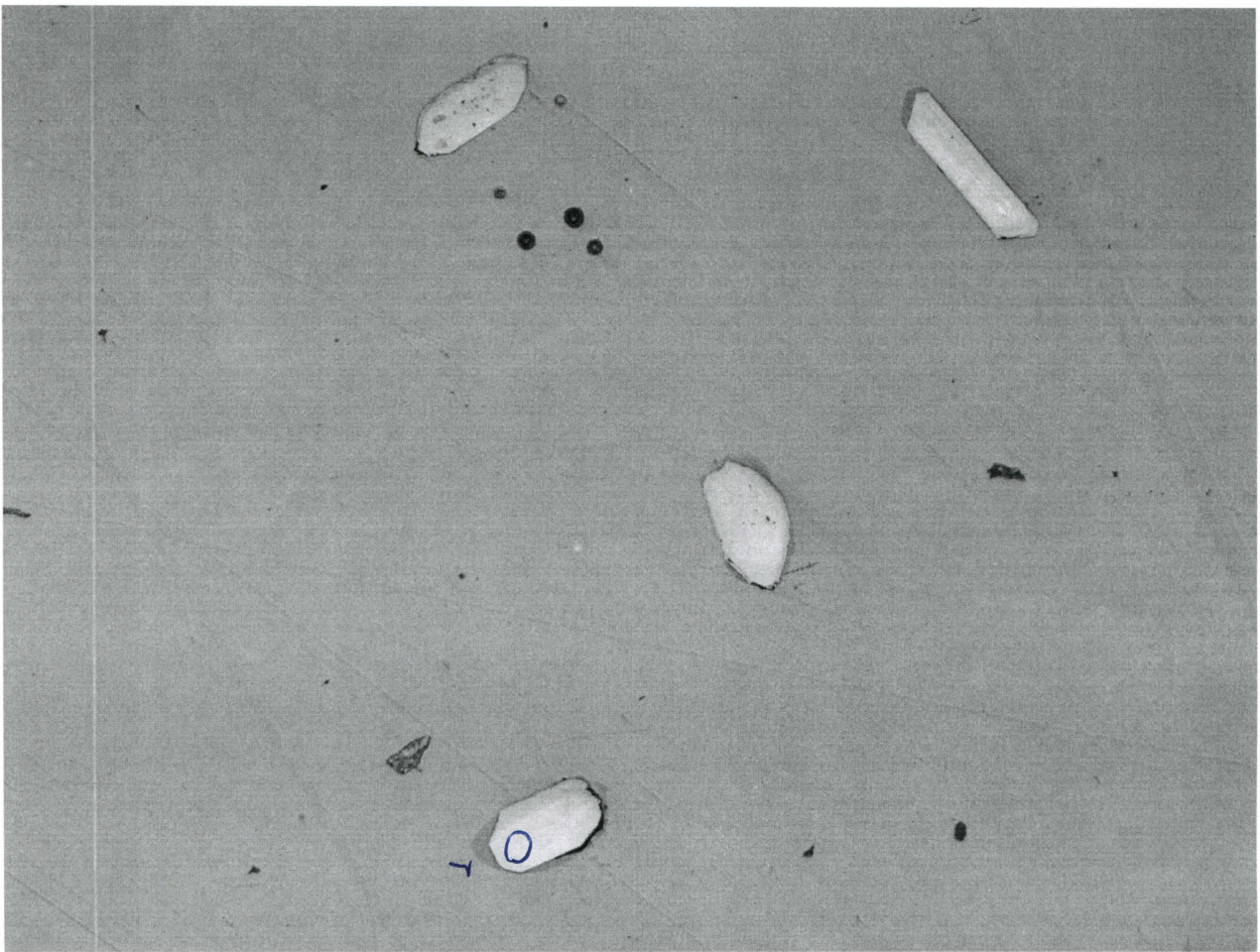
212



38
2059x1544, 32bit, 334.7KB

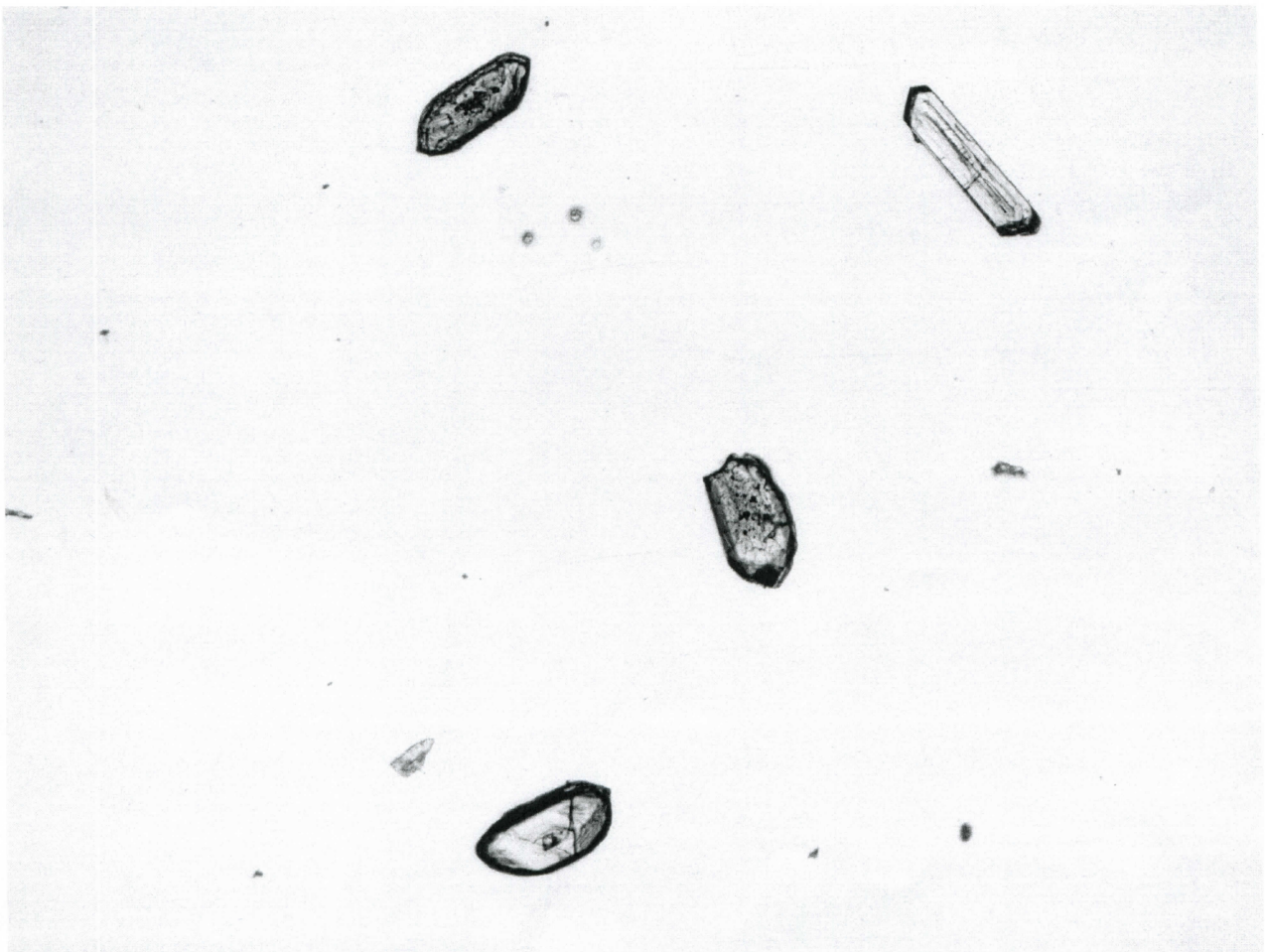
18/t

212



35
2059x1544, 32bit, 530.3KB

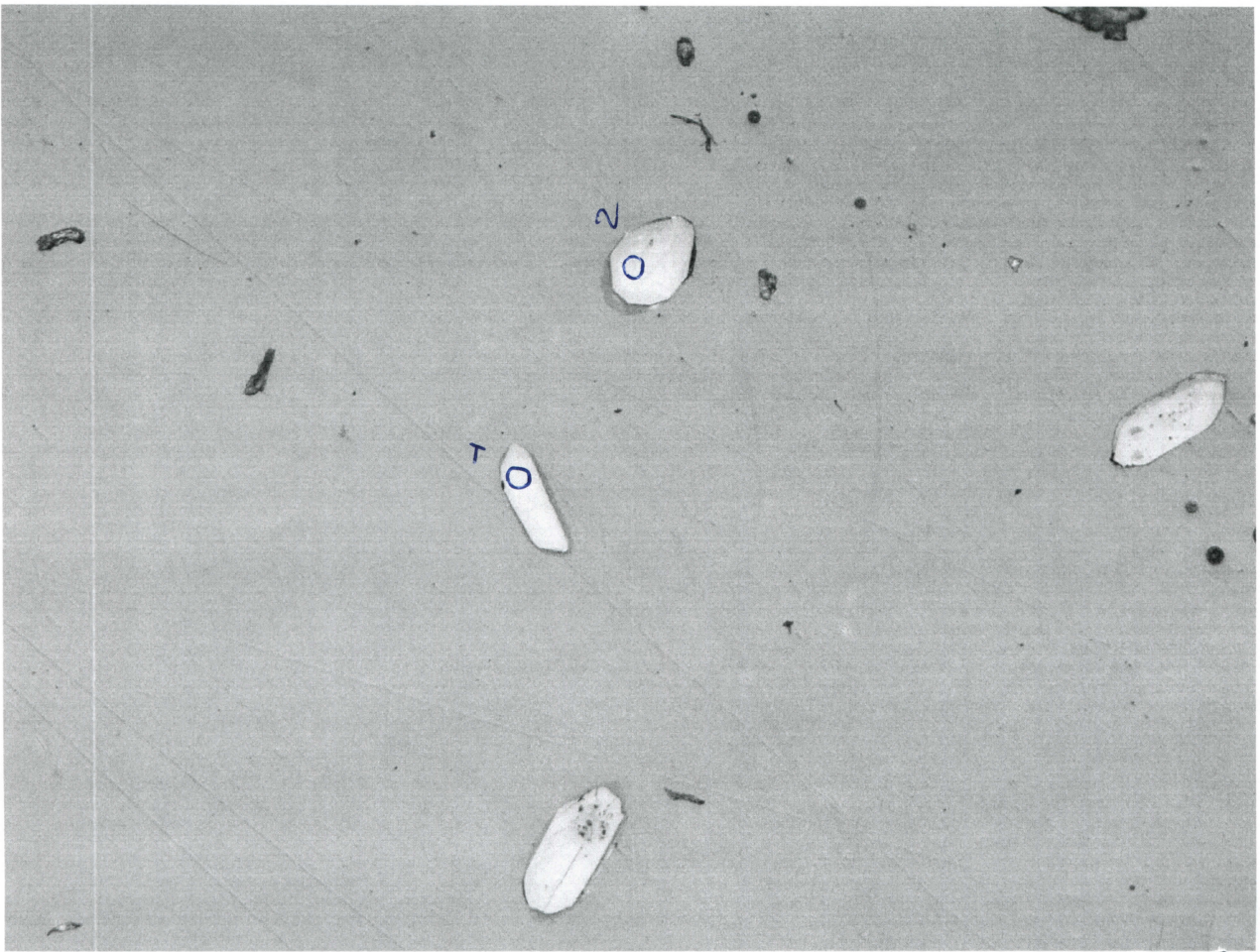
BTB



36
2059x1544, 32bit, 340.7KB

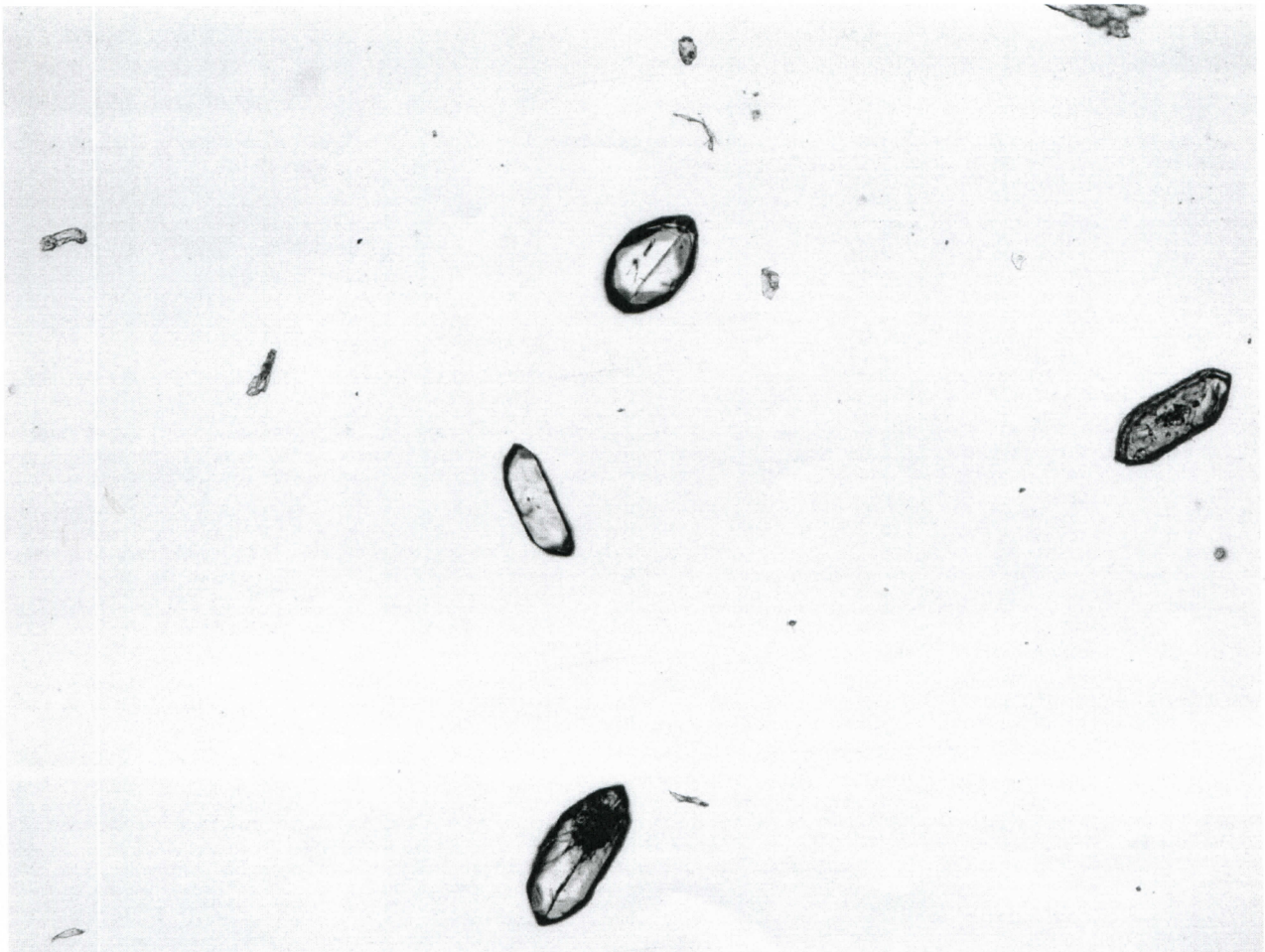
BTB

'9



33
2059x1544, 32bit, 557.5KB

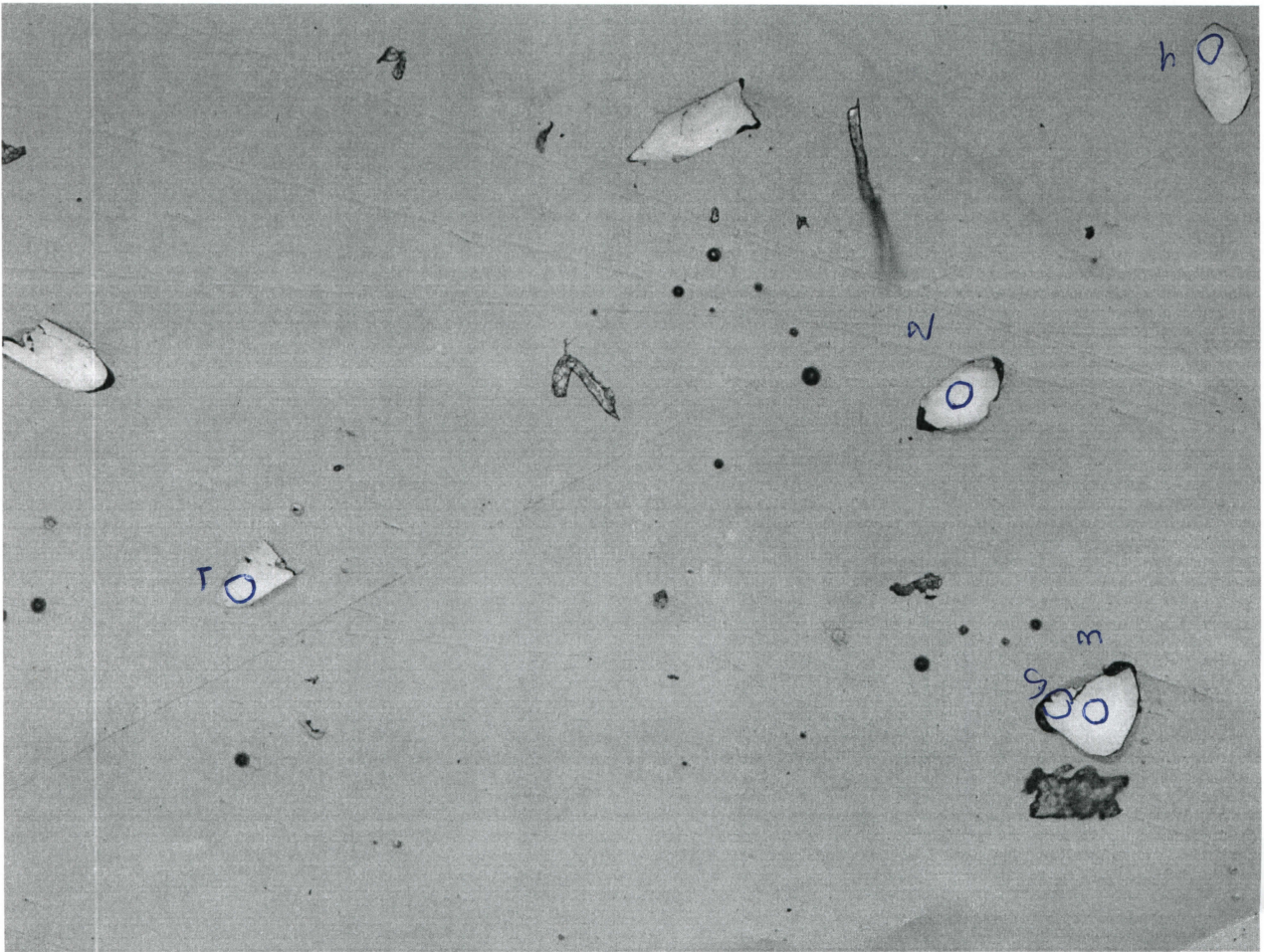
hfg



34
2059x1544, 32bit, 349.9KB

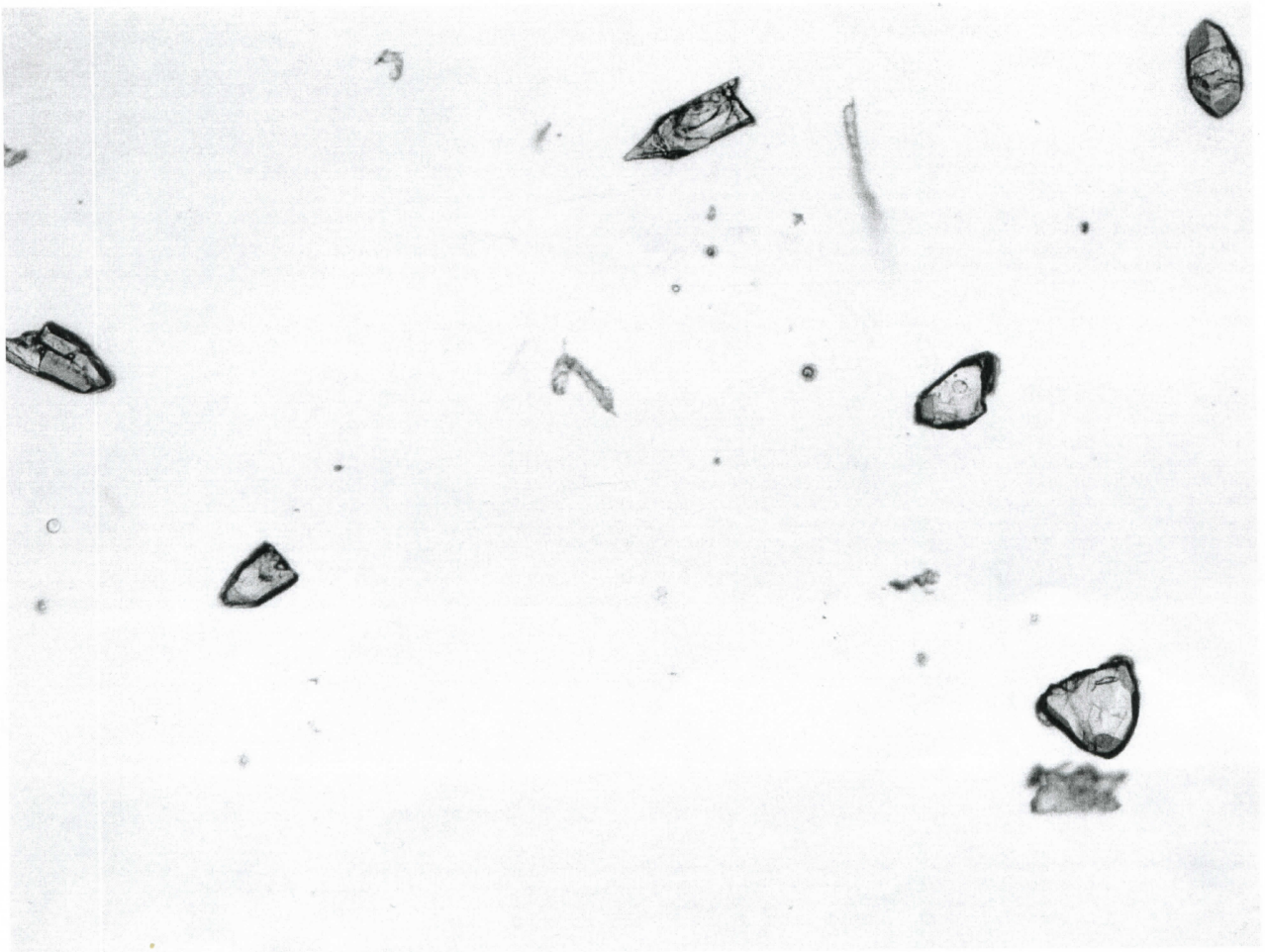
5'H

hfg



B15

31
2059x1544, 32bit, 564.6KB



T.2.3

32
2059x1544, 32bit, 334.1KB

B15