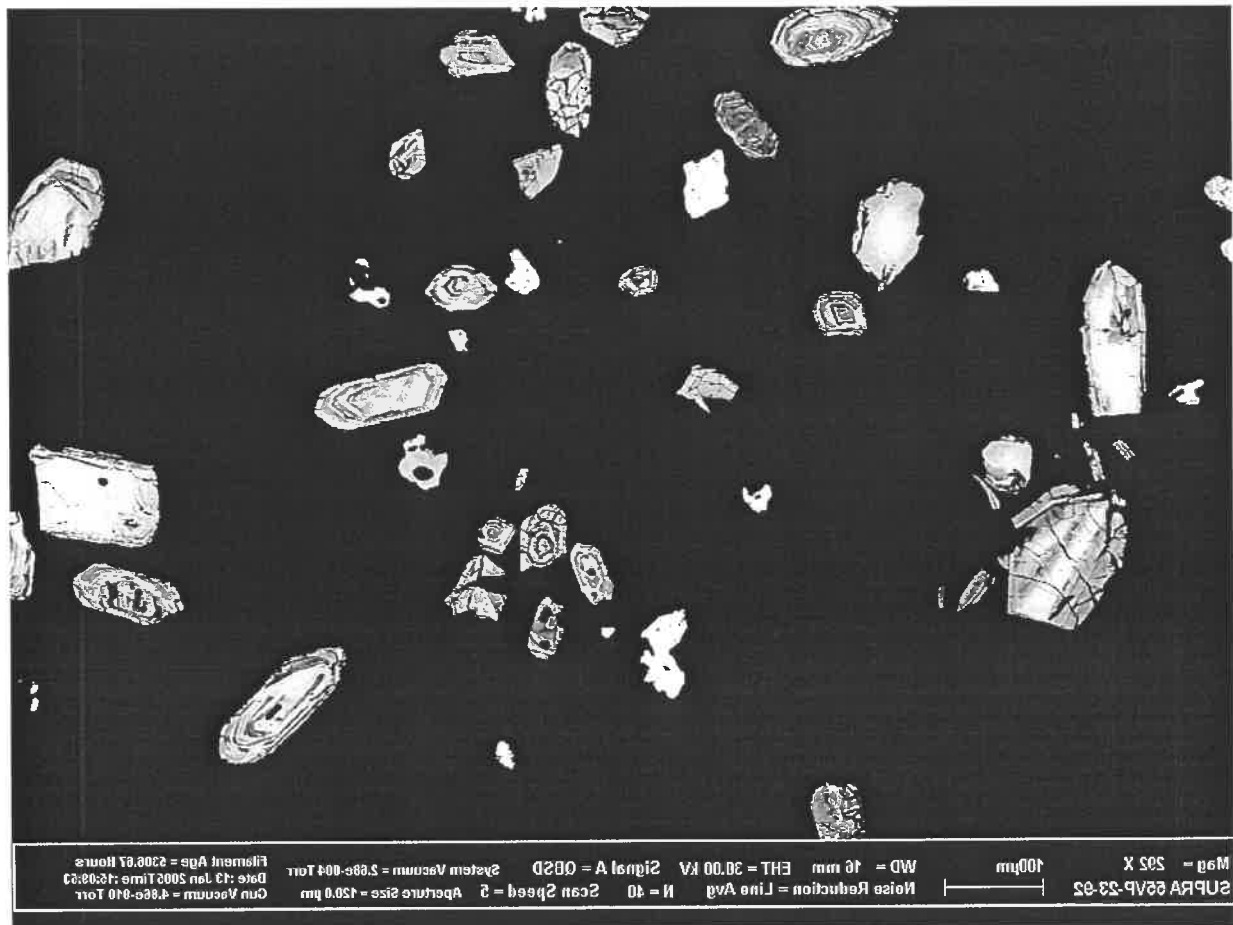


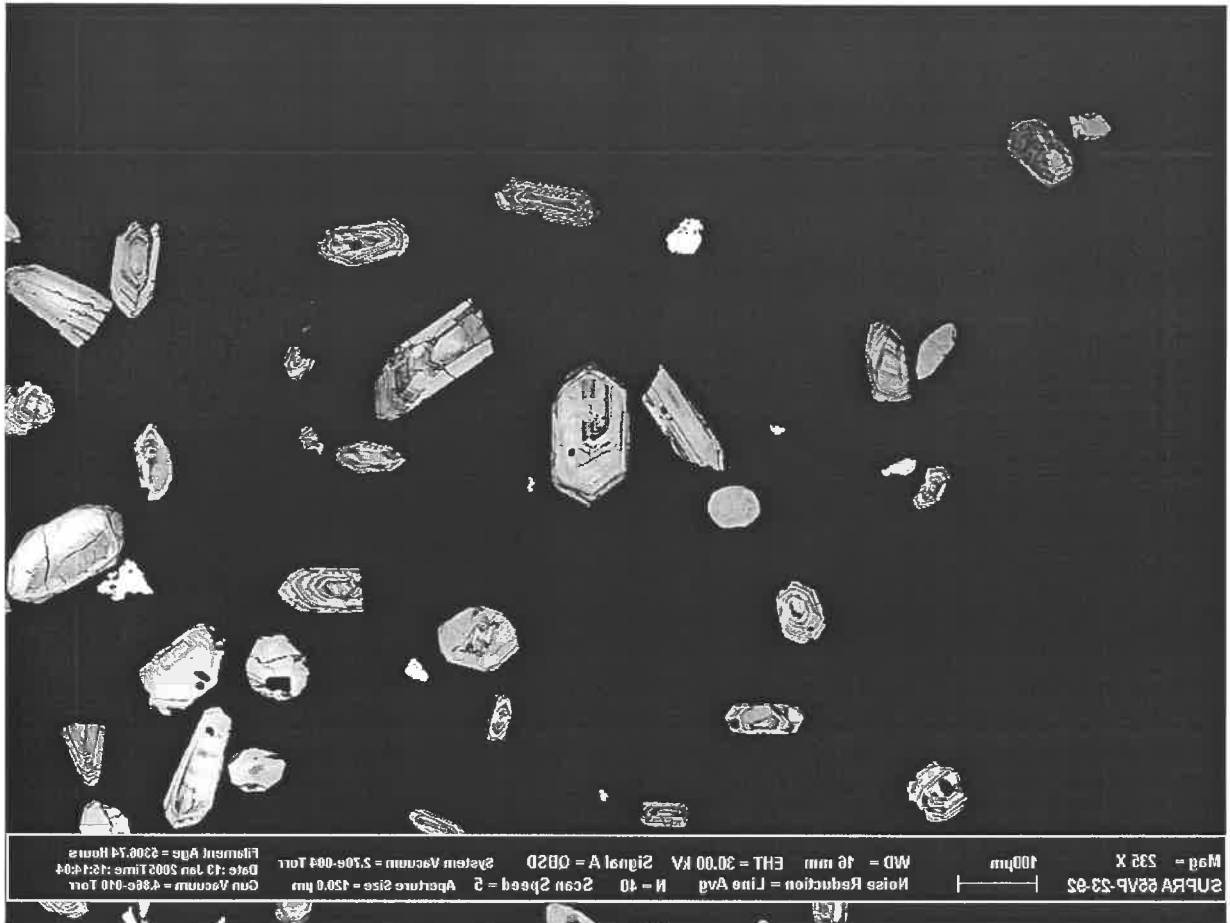
Mag = 500 X
SUPRA 55VP-33-92
Noise Reduction = Line Avg N = 40 Scan Speed = 2 Aperture Size = 450.0 µm
WD = 16 mm EHT = 30.00 kV Signal A = QB2D System Vacuum = 5.11e-004 Torr
Gun Vacuum = 4.86e-010 Torr
Date: 13 Jan 2005 Time: 14:48:43
Filament Age = 2308.58 Hours

B1.tiff
1024x768, 8bit, 768.2KB

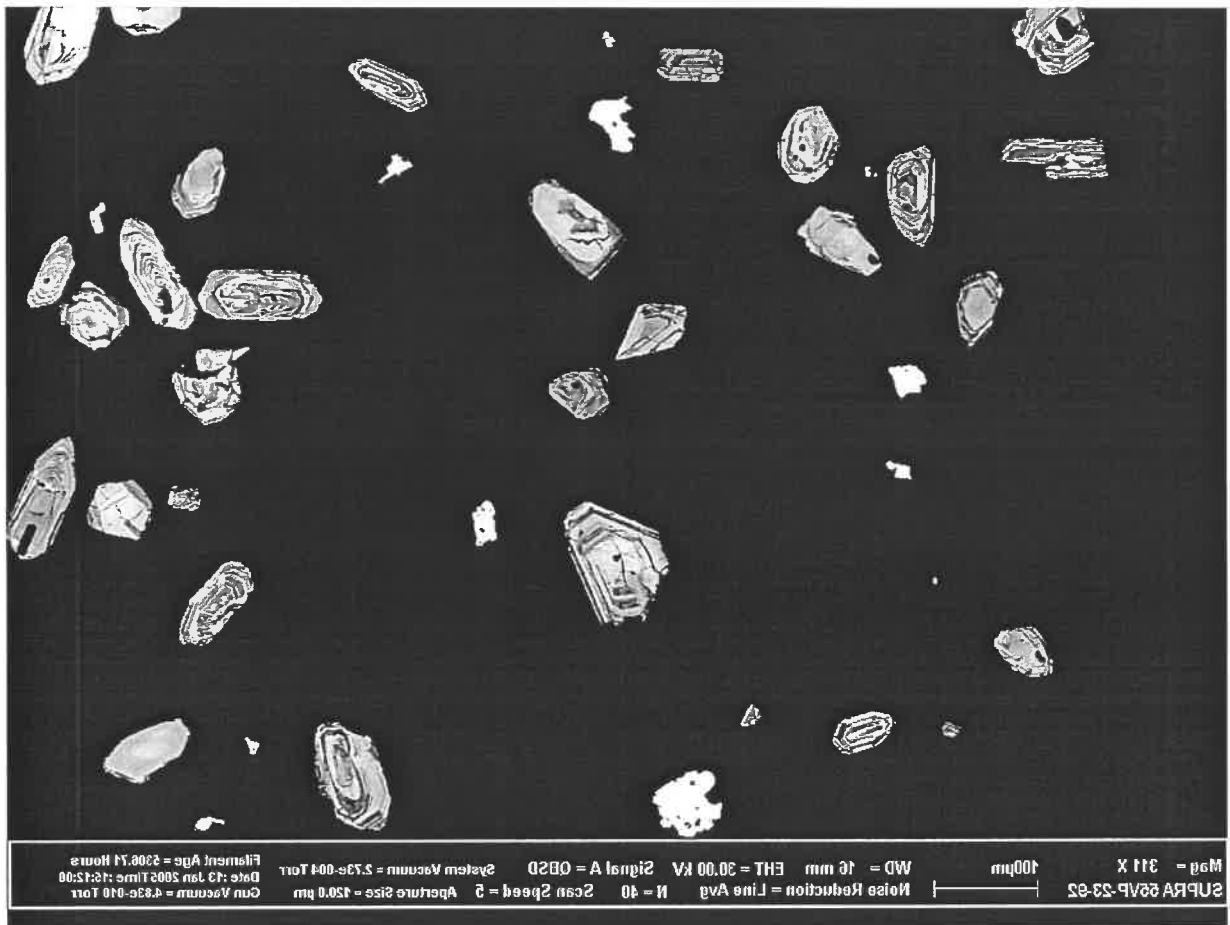


Mag = 500 X
SUPRA 55VP-33-92
Noise Reduction = Line Avg N = 40 Scan Speed = 2 Aperture Size = 450.0 µm
WD = 16 mm EHT = 30.00 kV Signal A = QB2D System Vacuum = 5.86e-004 Torr
Gun Vacuum = 4.86e-010 Torr
Date: 13 Jan 2005 Time: 14:08:33
Filament Age = 2308.61 Hours

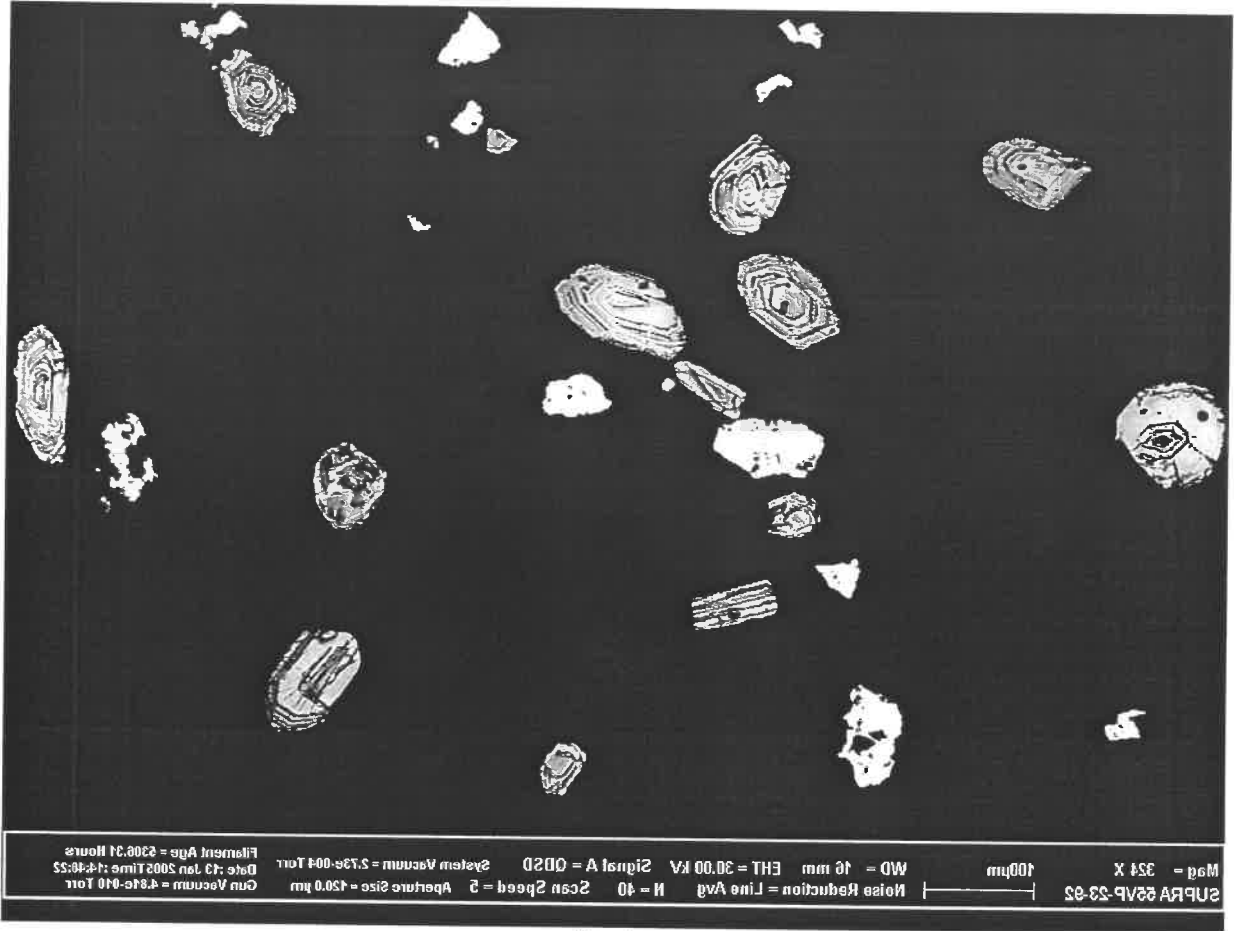
B10.tiff
1024x768, 8bit, 768.2KB



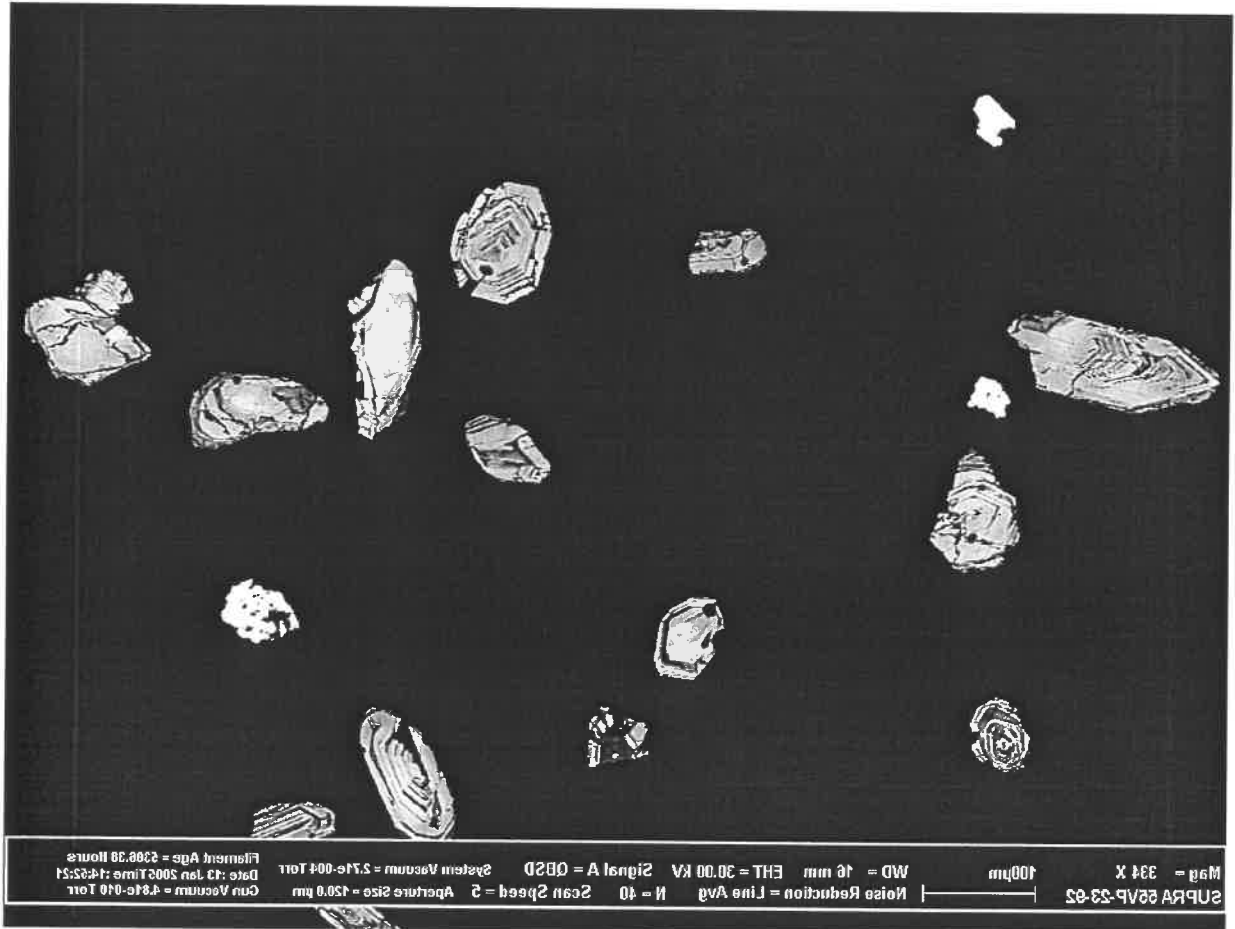
B11.tiff
1024x768, 8bit, 768.2KB



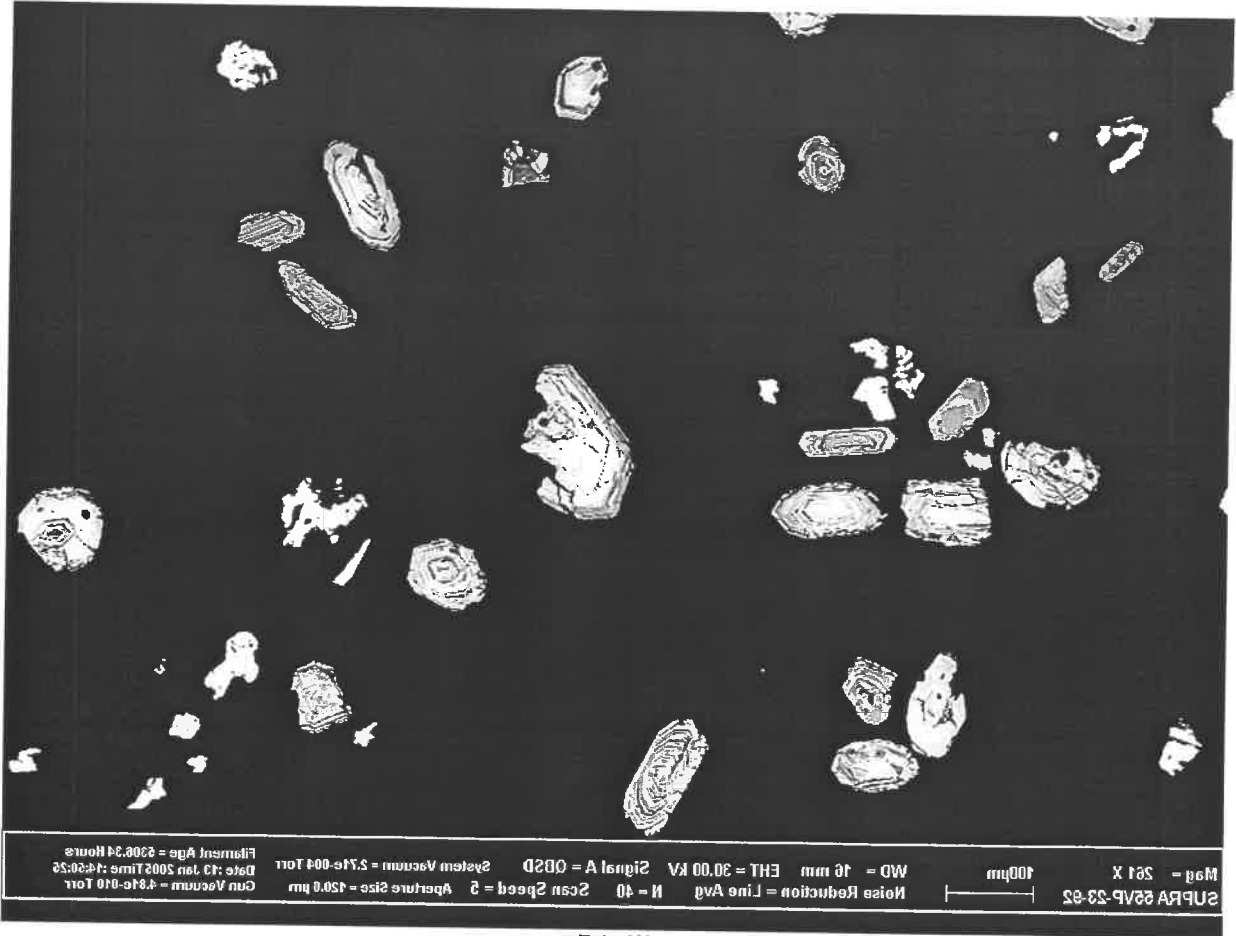
B12.tiff
1024x768, 8bit, 768.2KB



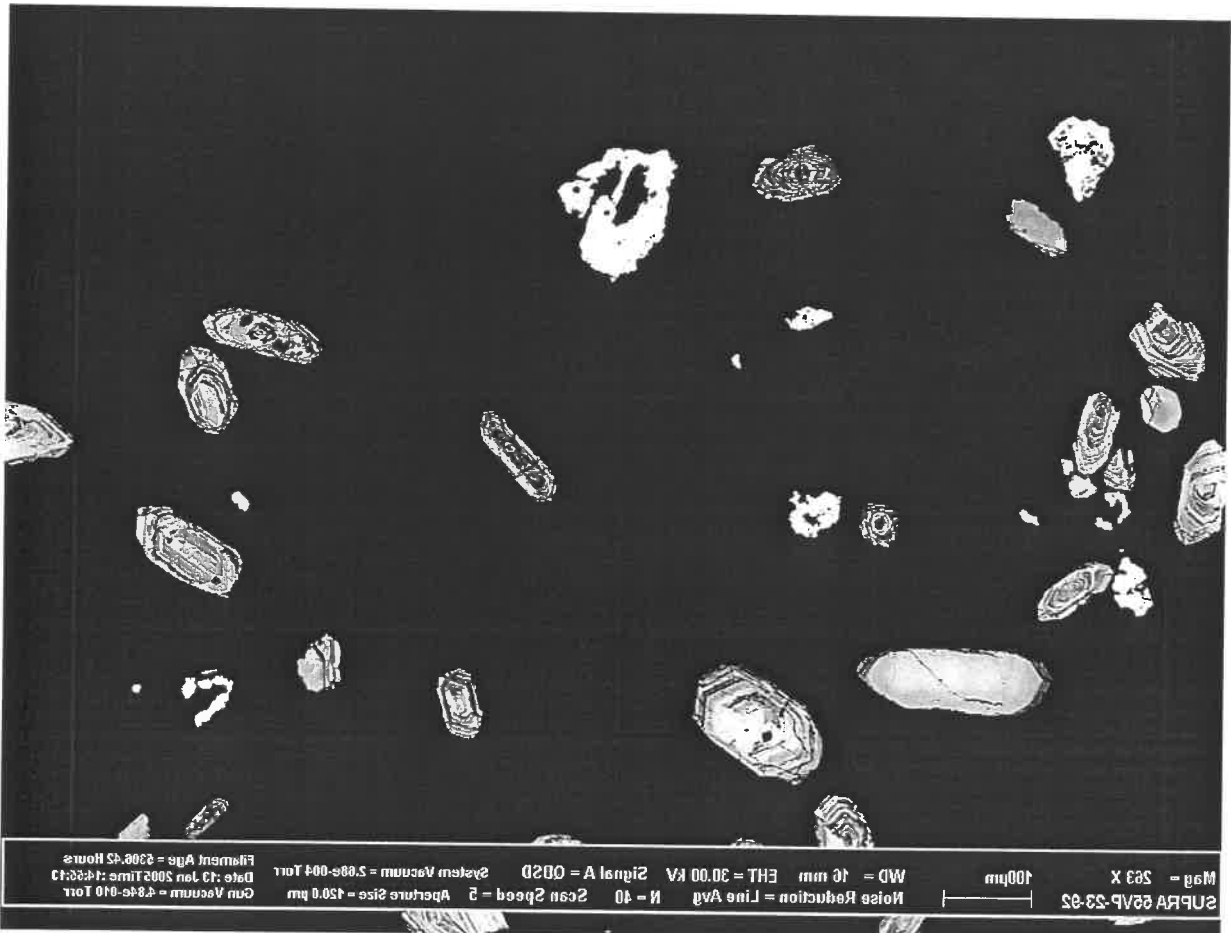
B2.tiff
1024x768, 8bit, 768.2KB



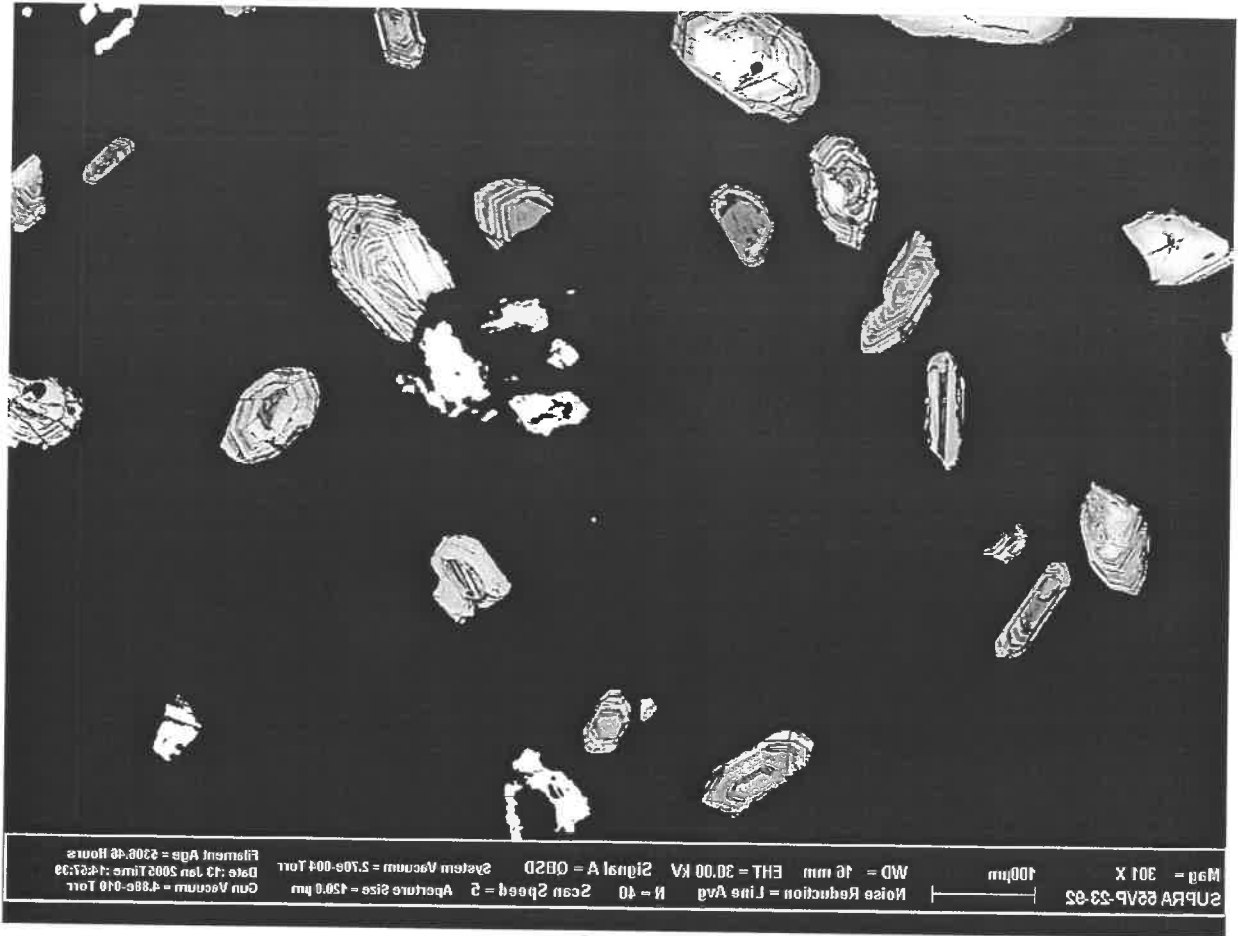
B3.tiff
1024x768, 8bit, 768.2KB



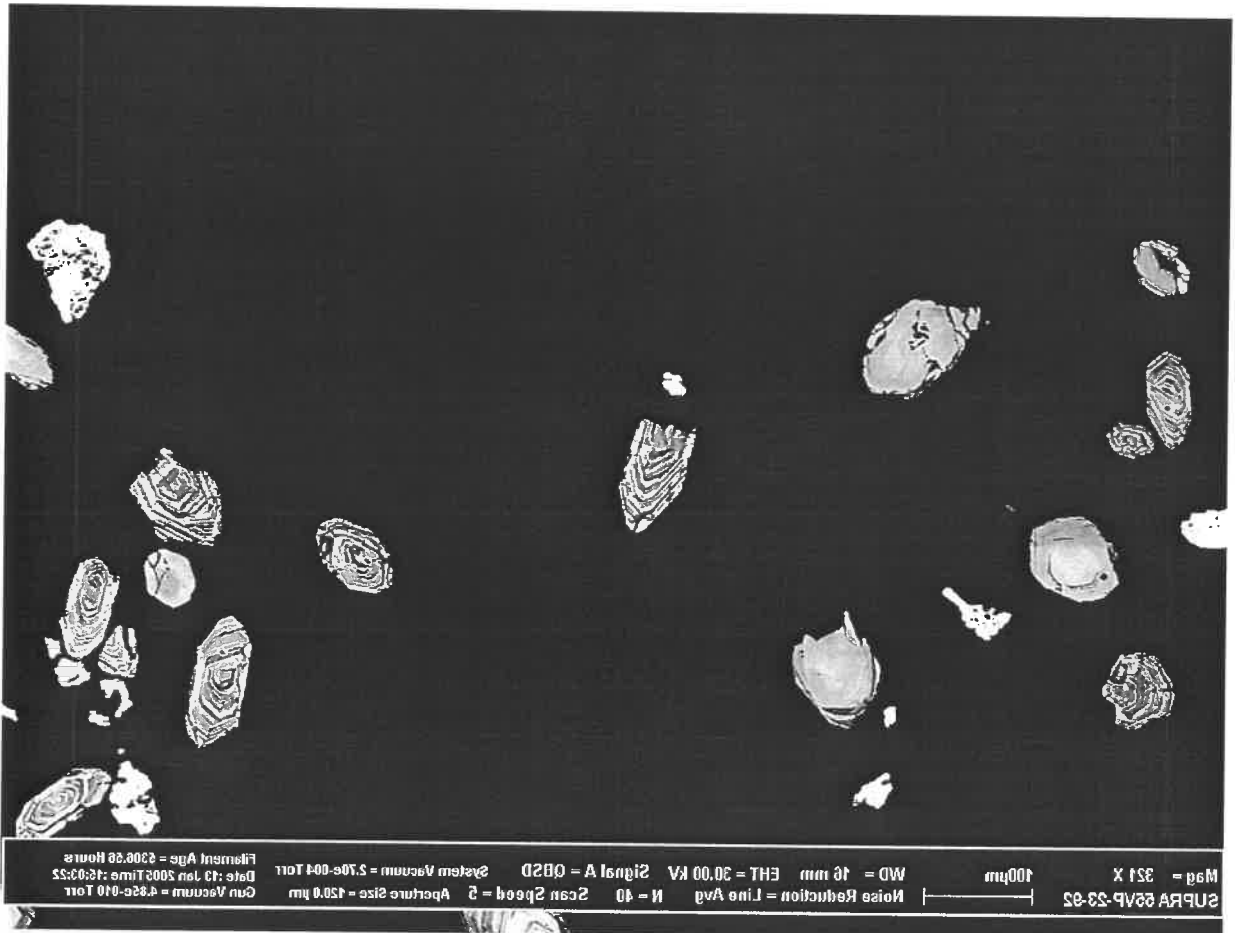
B4.tiff
1024x768, 8bit, 768.2KB



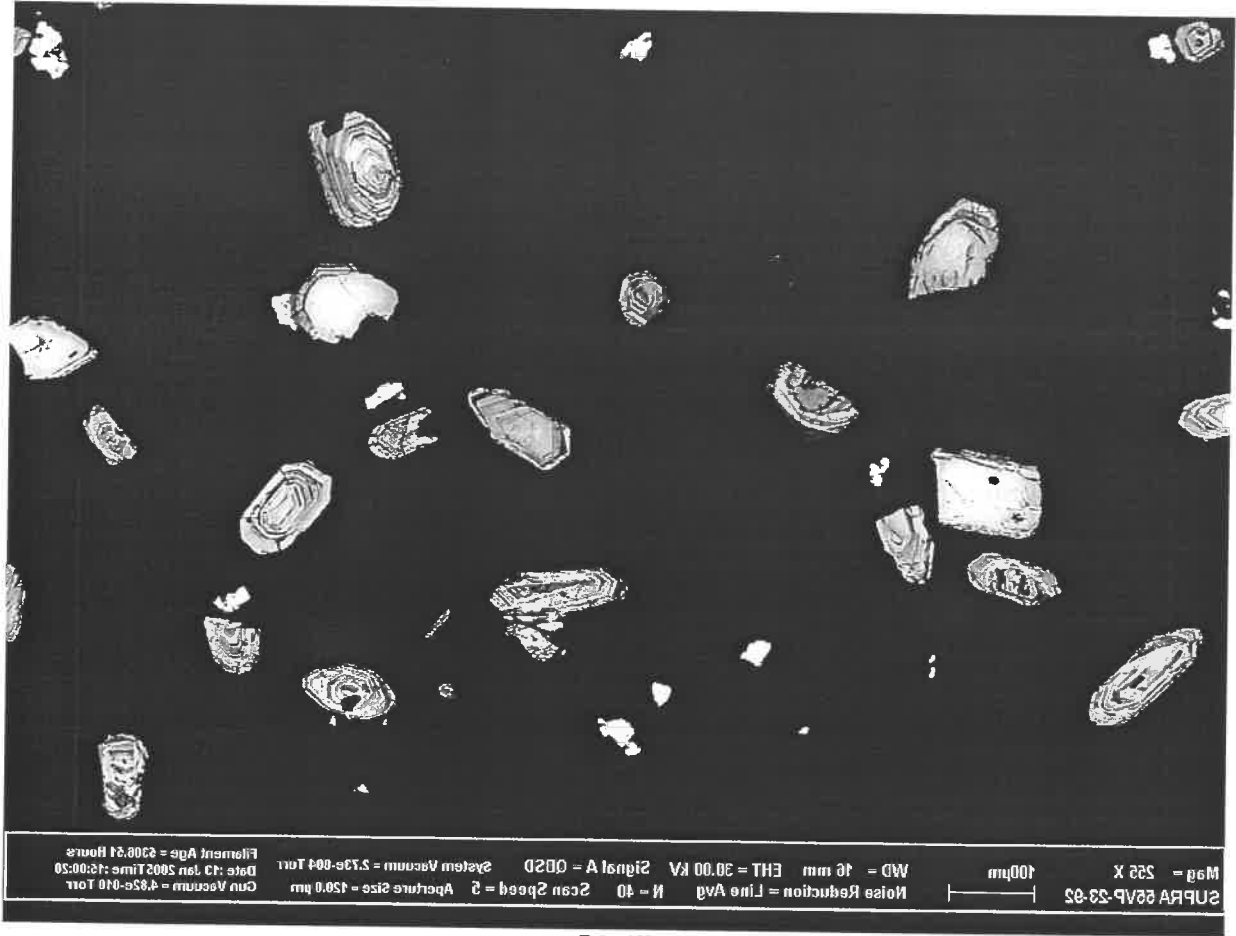
B5.tiff
1024x768, 8bit, 768.2KB



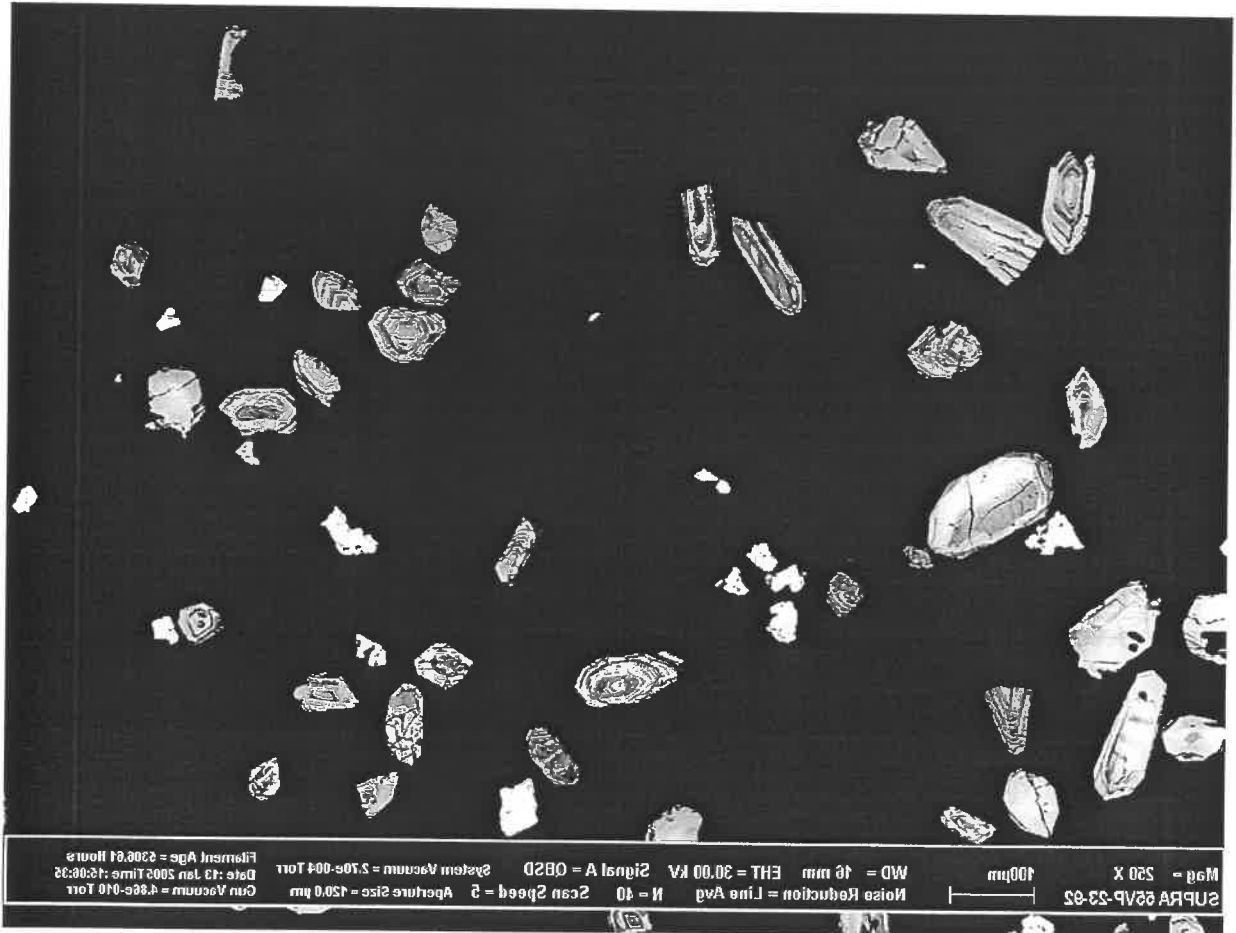
B6.tiff
1024x768, 8bit, 768.2KB



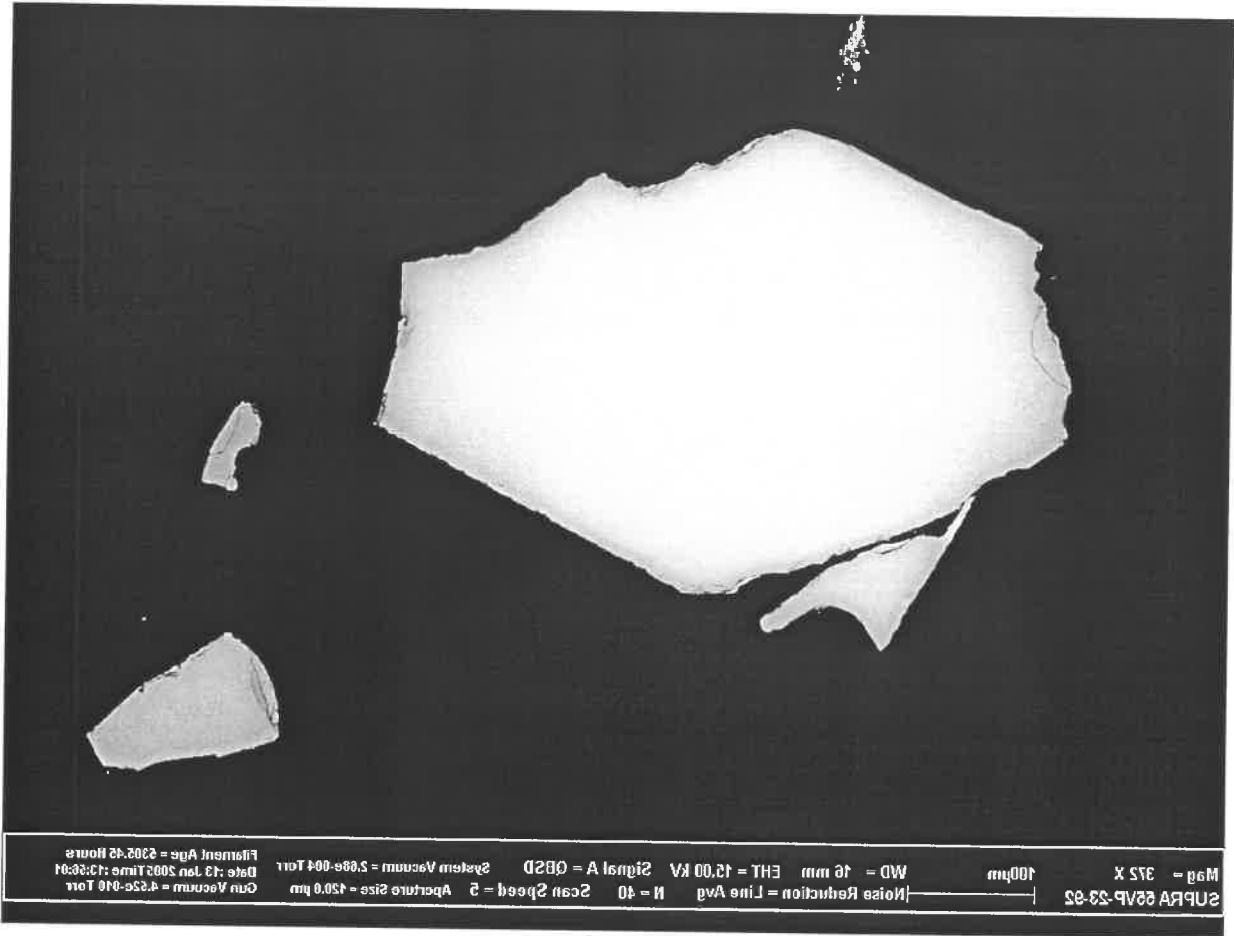
B7.tiff
1024x768, 8bit, 768.2KB



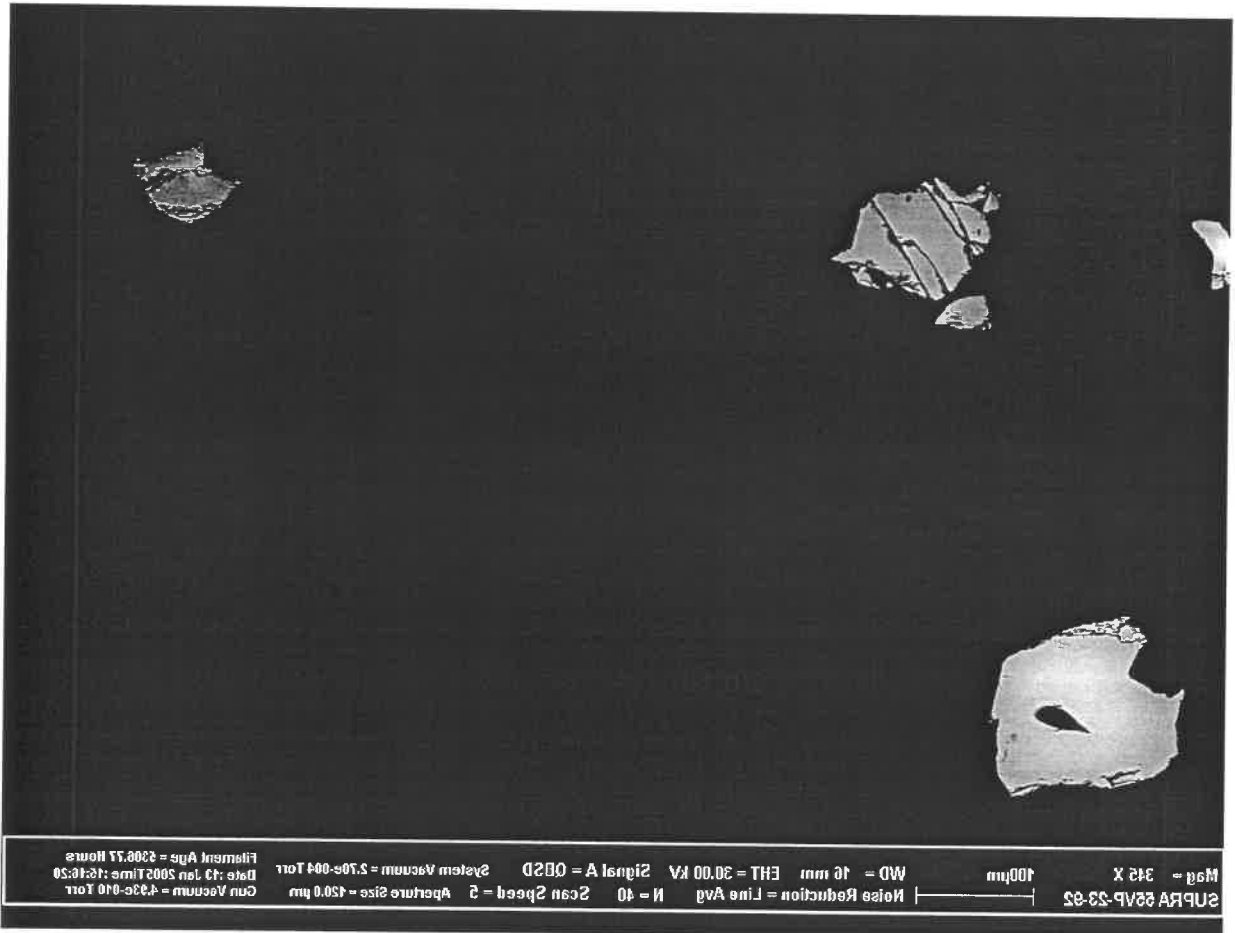
B8.tiff
1024x768, 8bit, 768.2KB



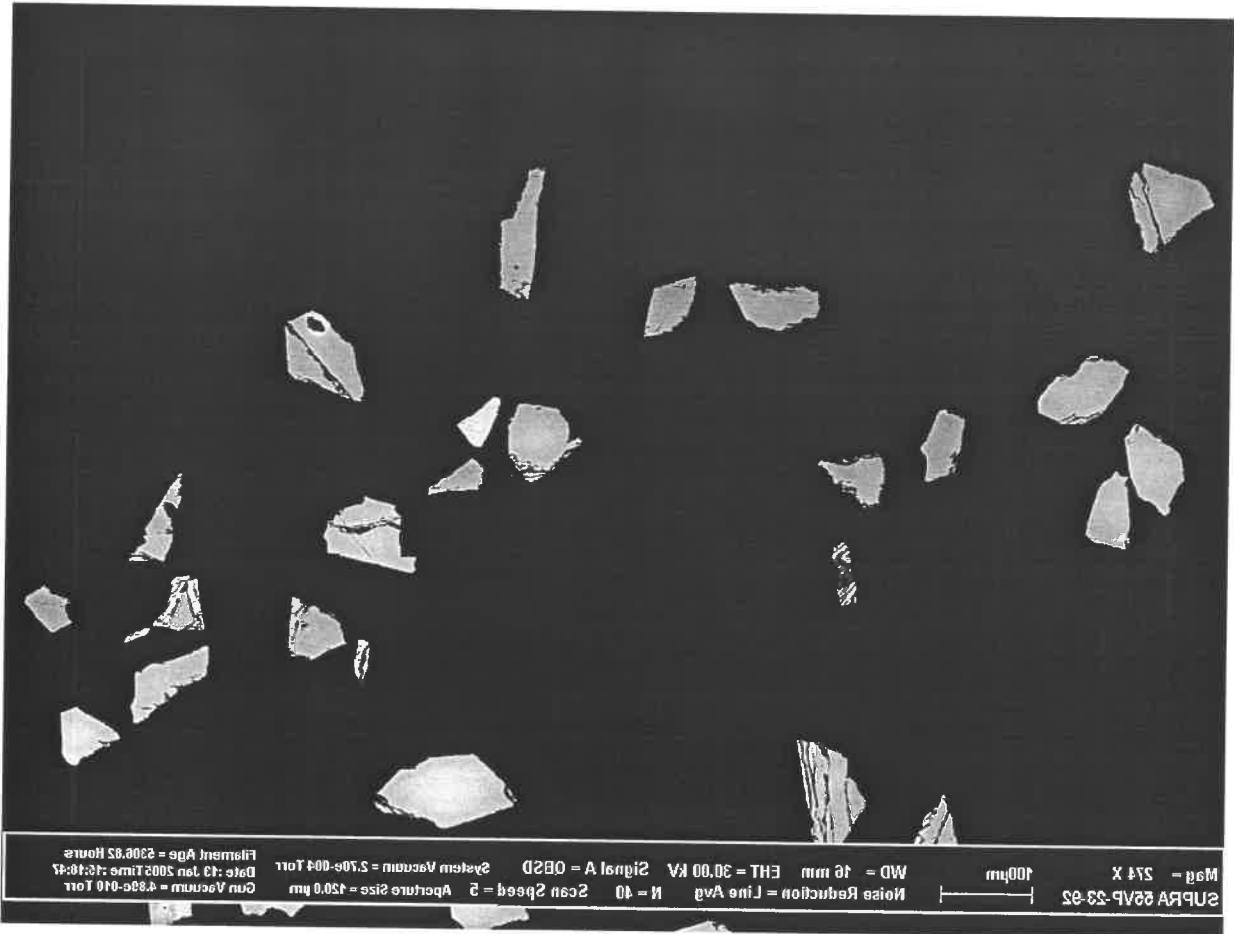
B9.tiff
1024x768, 8bit, 768.2KB



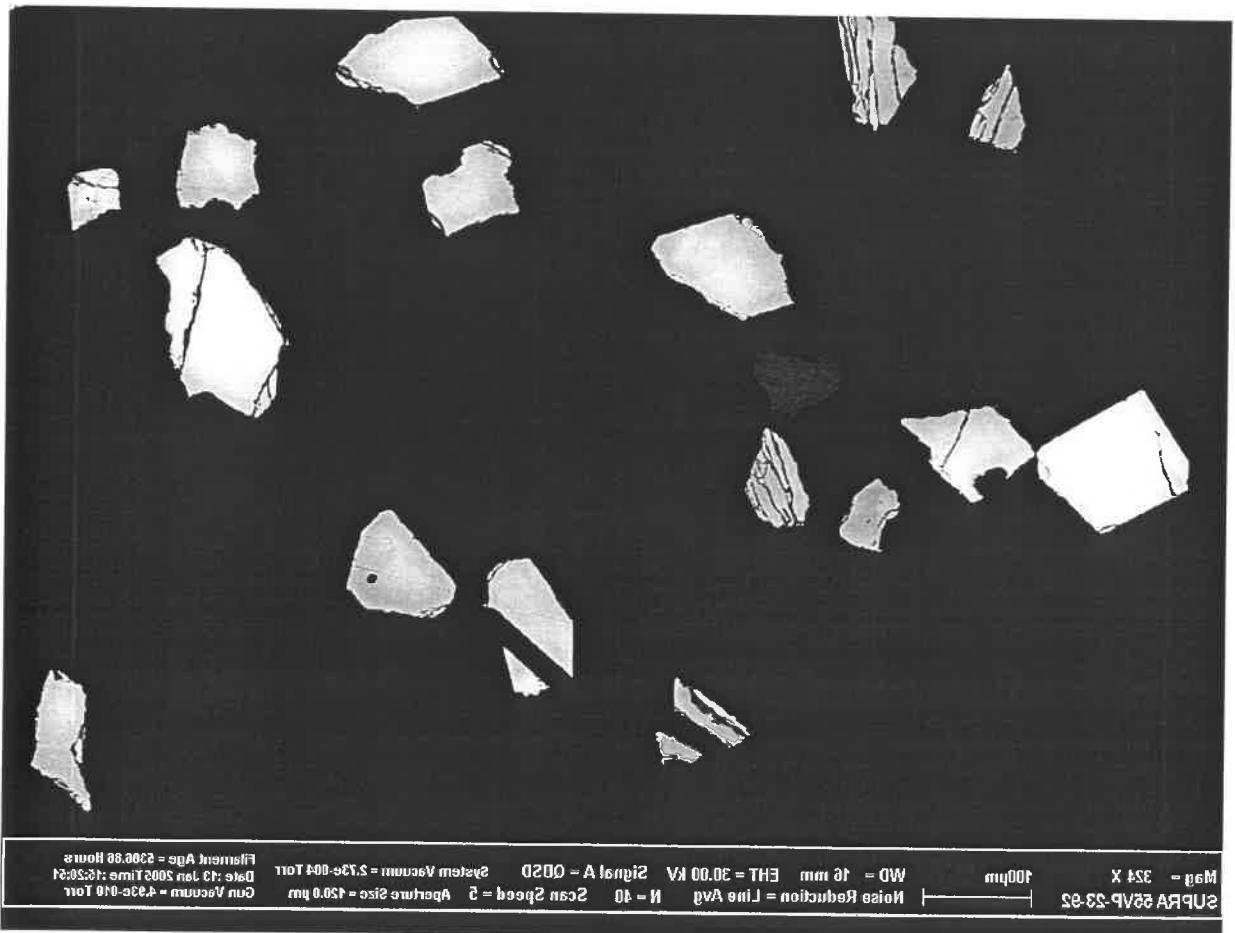
CZ.tiff
1024x768, 8bit, 768.2KB



T1.tiff
1024x768, 8bit, 768.2KB

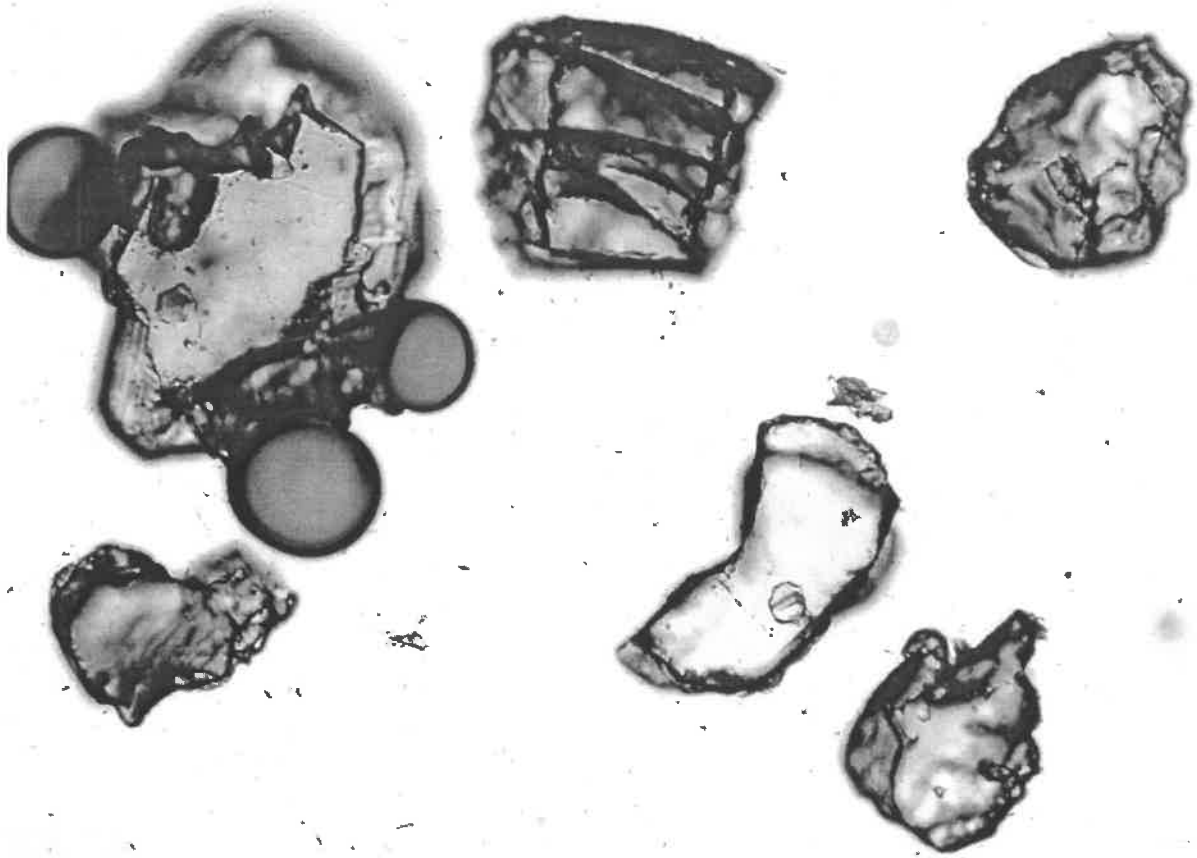


T2.tiff
1024x768, 8bit, 768.2KB

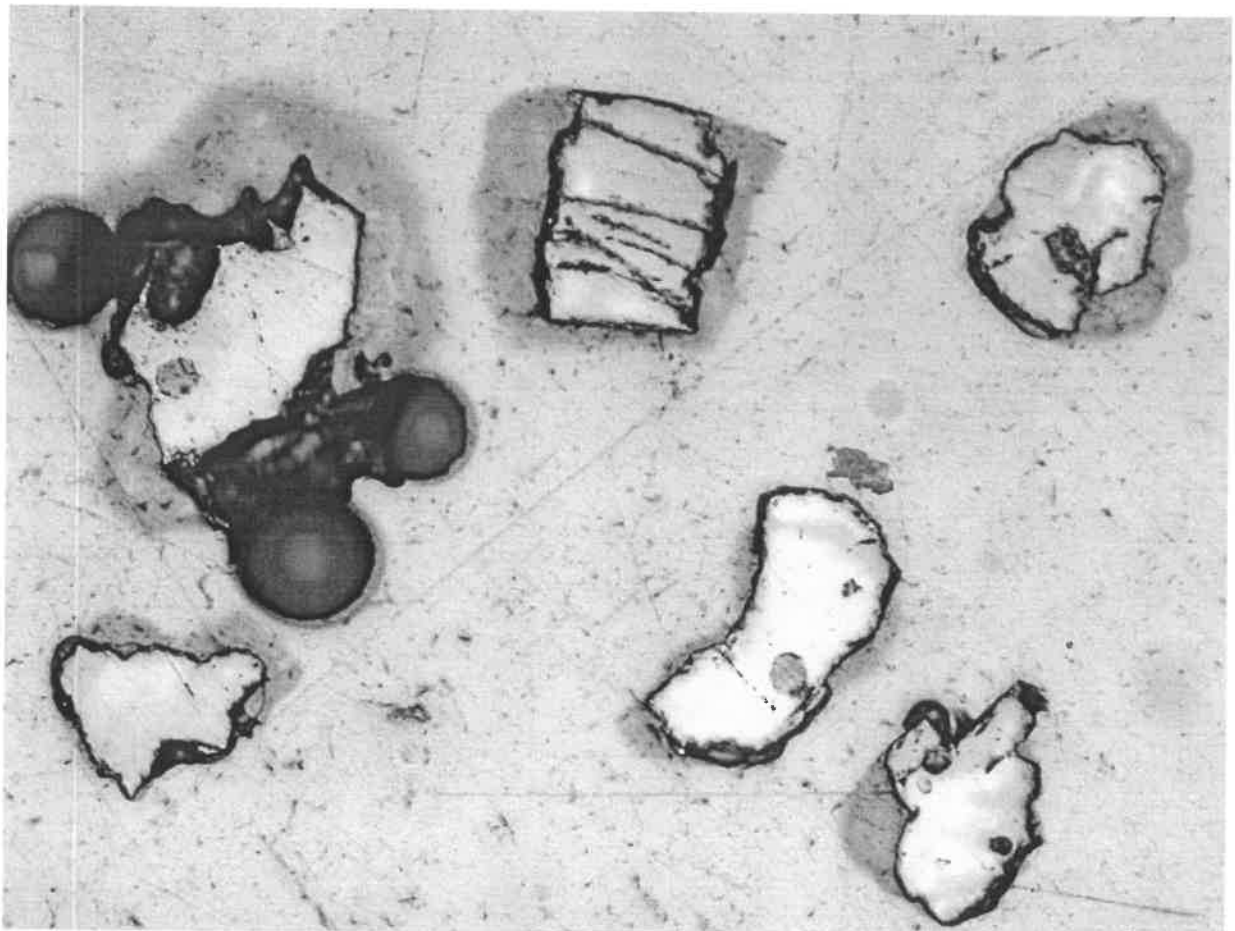


T3.tiff
1024x768, 8bit, 768.2KB

05-03



11122756.JPG
1280x960, 32bit, 846.3KB



11122835.JPG
1280x960, 32bit, 921.5KB