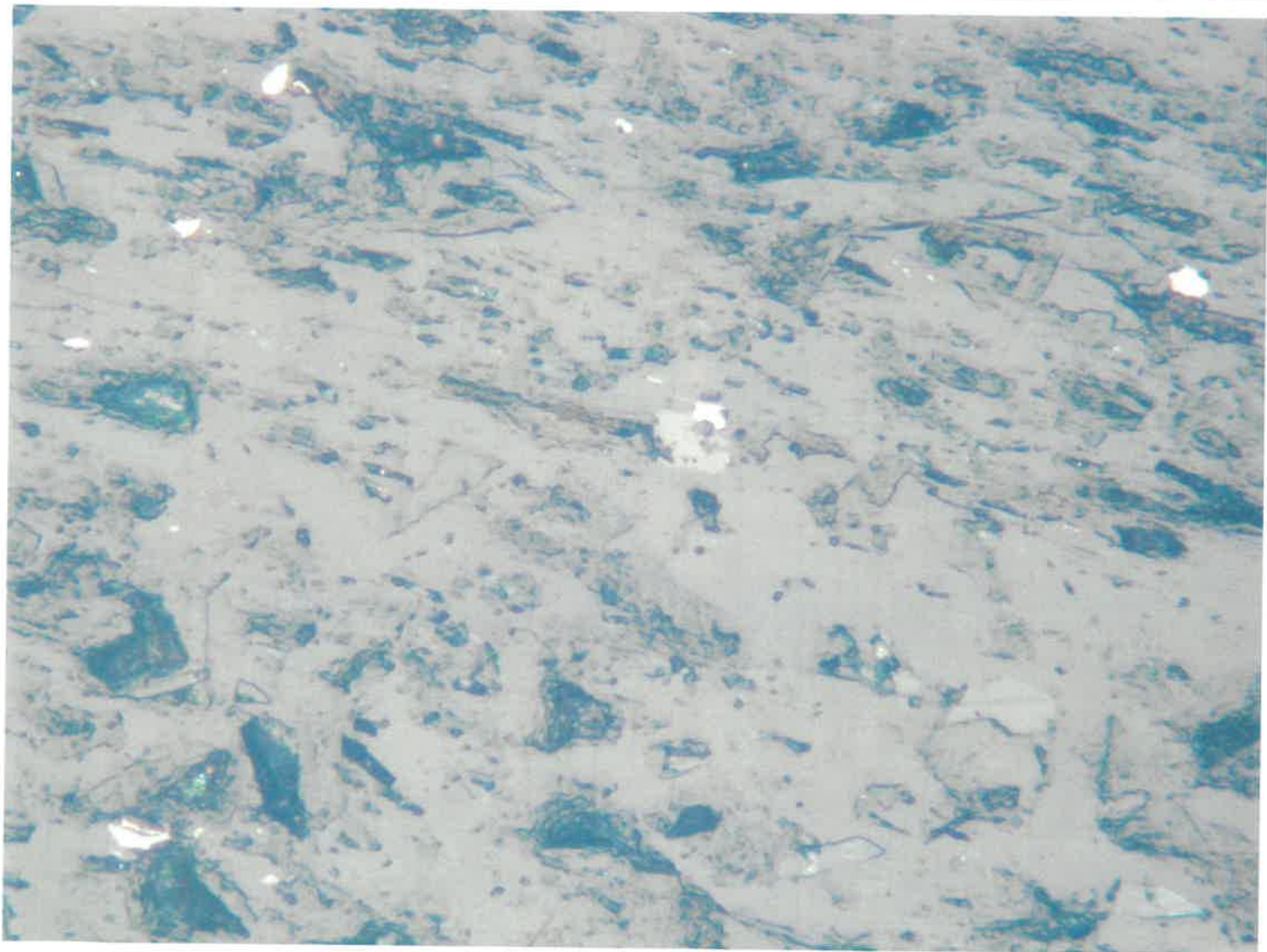
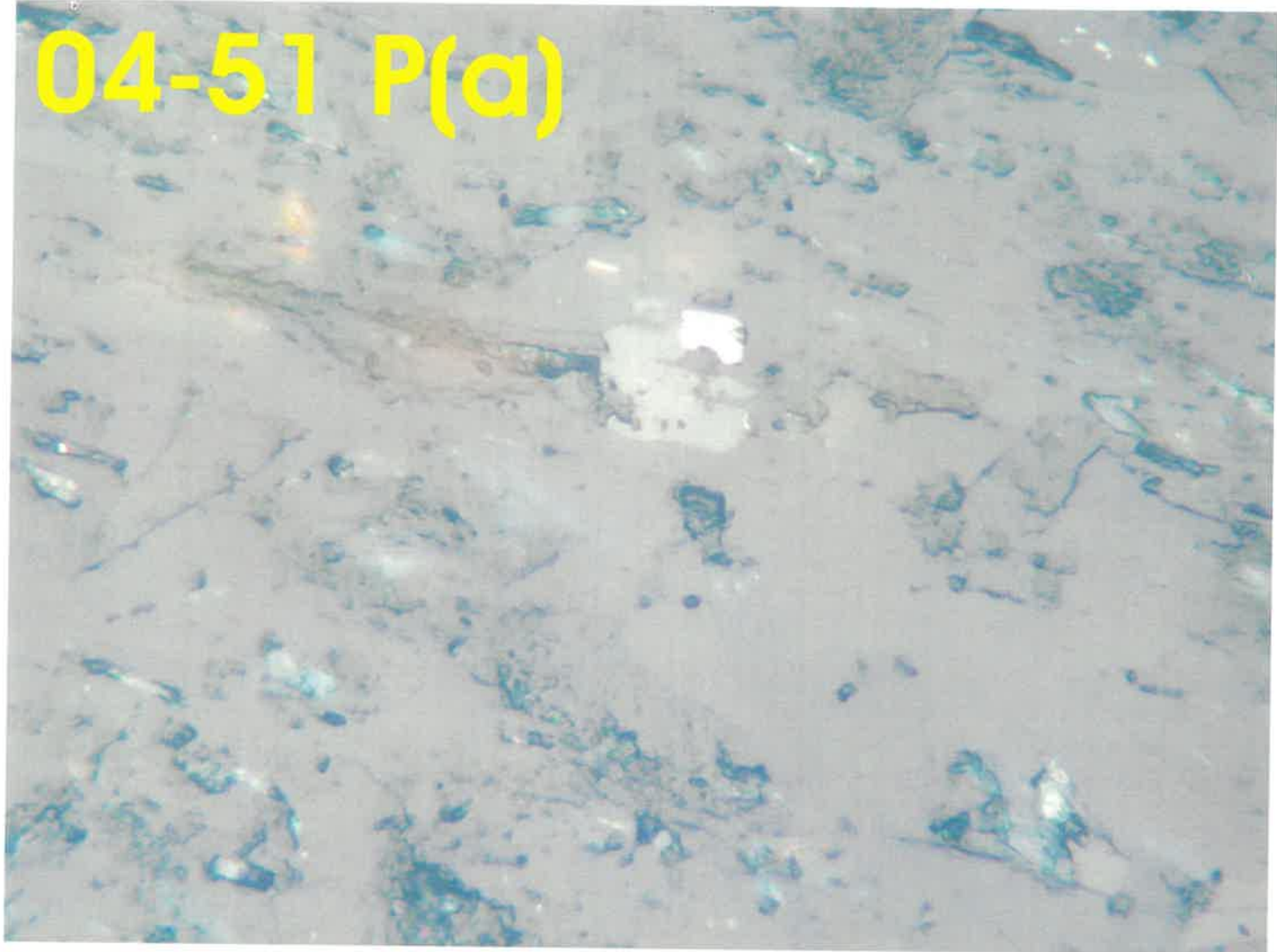
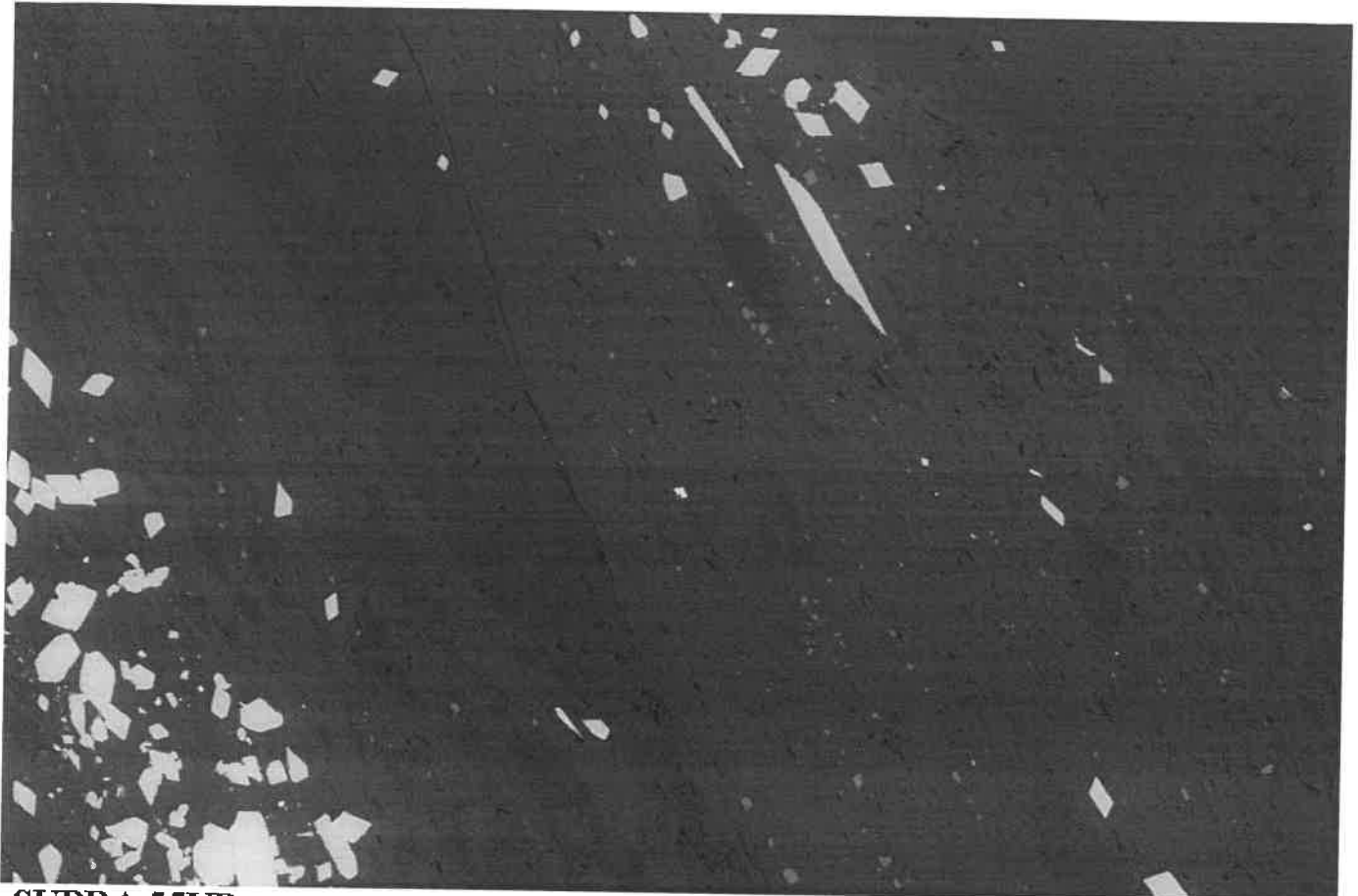


04-51 P(a)





SUPRA 55VP

Serial No. = LEO SUPRA 55VP-23-02

100µm

WD = 21 mm

Mag = 146 X

Detector = QBSD

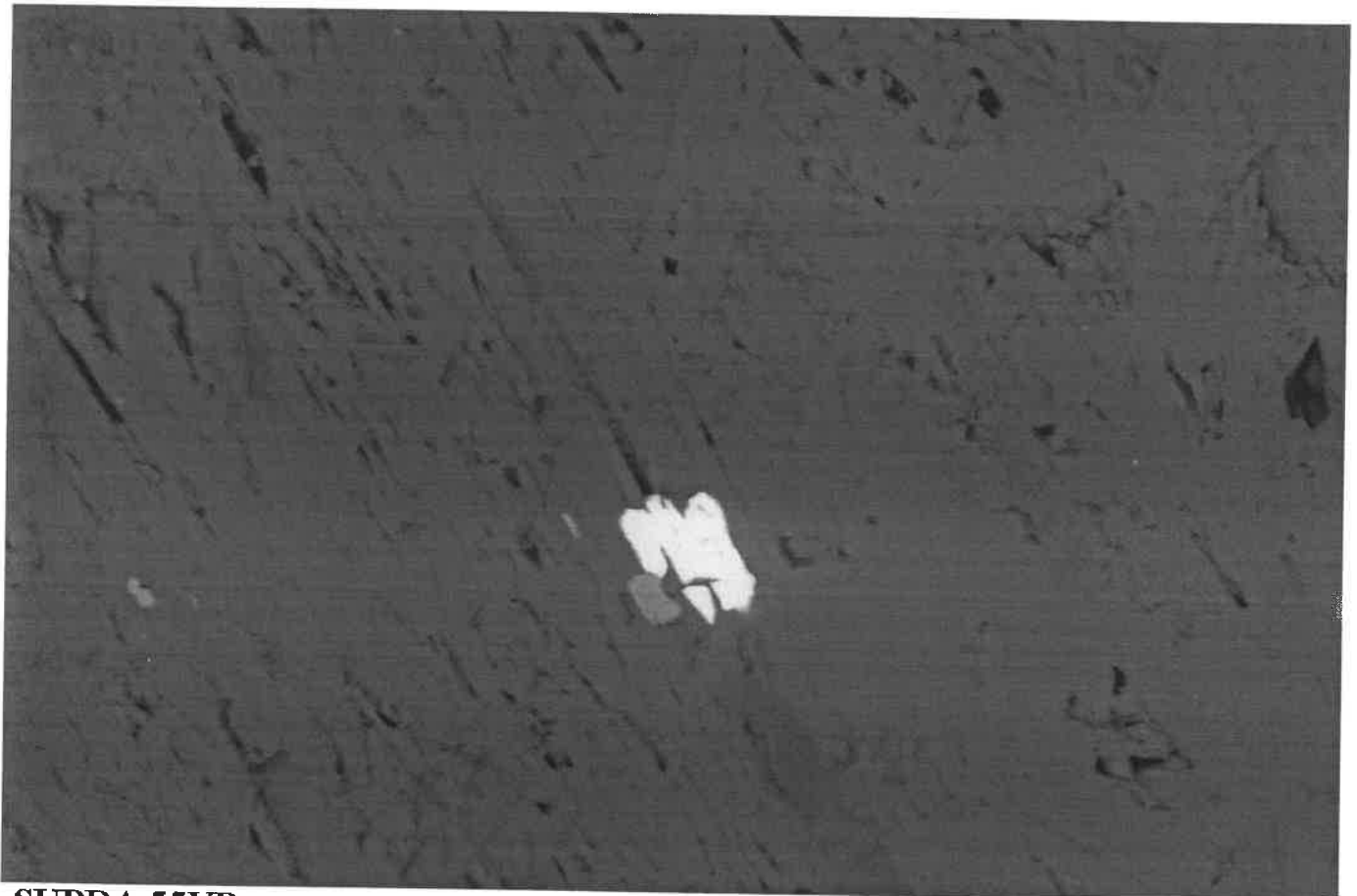
EHT = 25.00 kV

Scan Speed = 5

Gun Vacuum = 6.38e-010 Torr

Filament Age = 4001.08 Hours

Date : 21 Apr 2004 Time : 23:37:55



SUPRA 55VP

Serial No. = LEO SUPRA 55VP-23-02

10µm

WD = 21 mm

Mag = 1.64 K X

Detector = QBSD

EHT = 25.00 kV

Scan Speed = 5

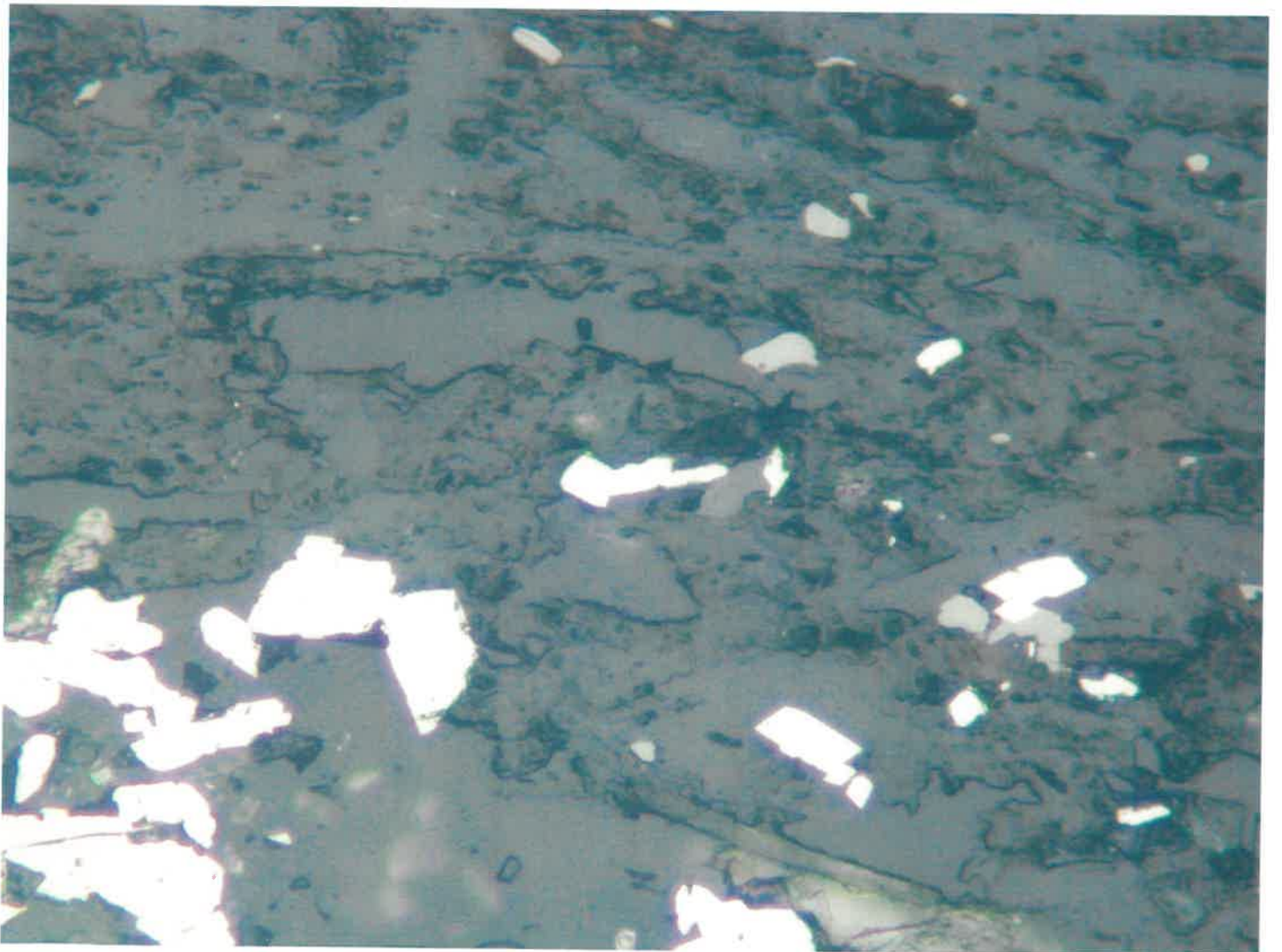
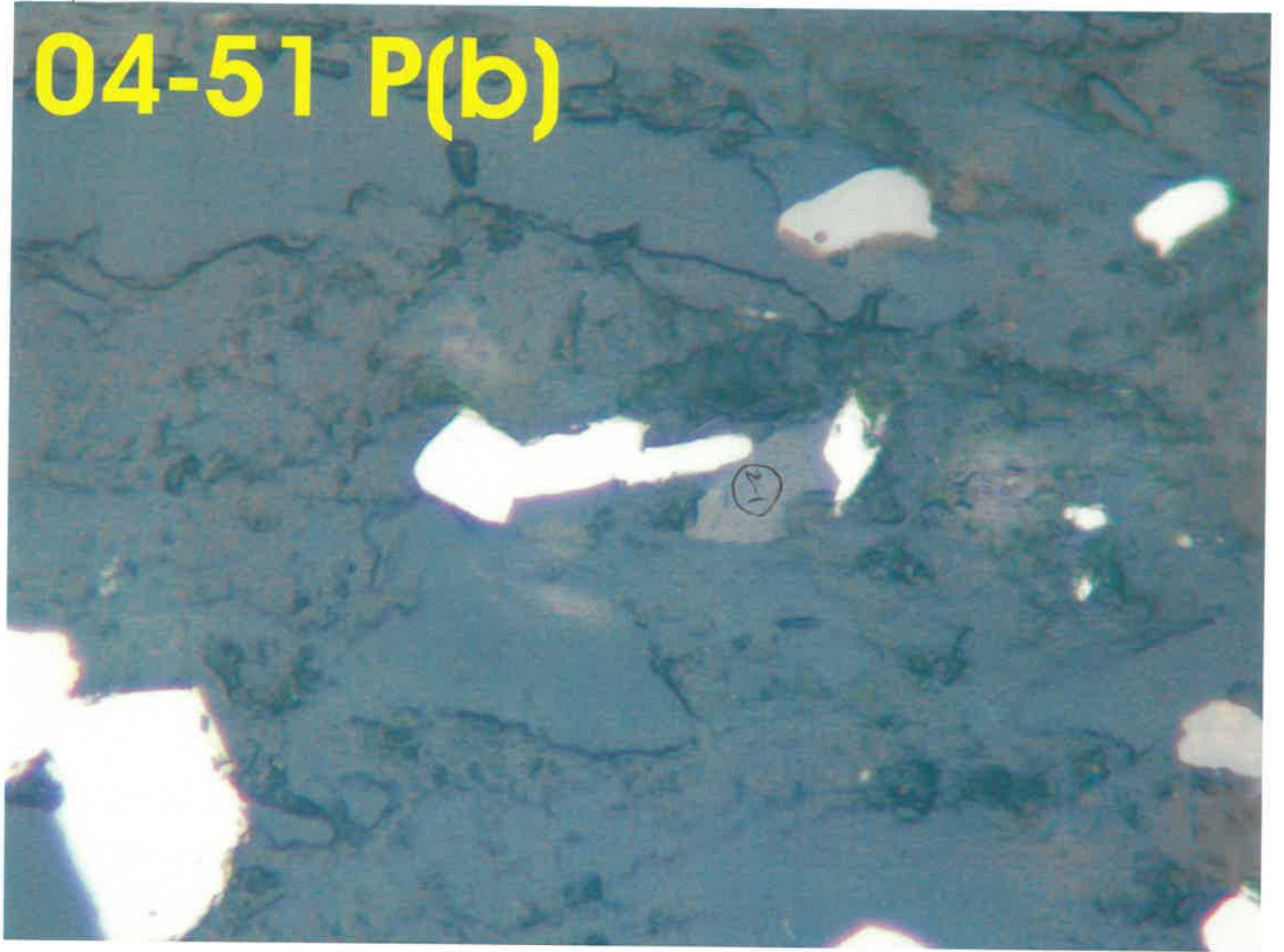
Gun Vacuum = 6.61e-010 Torr

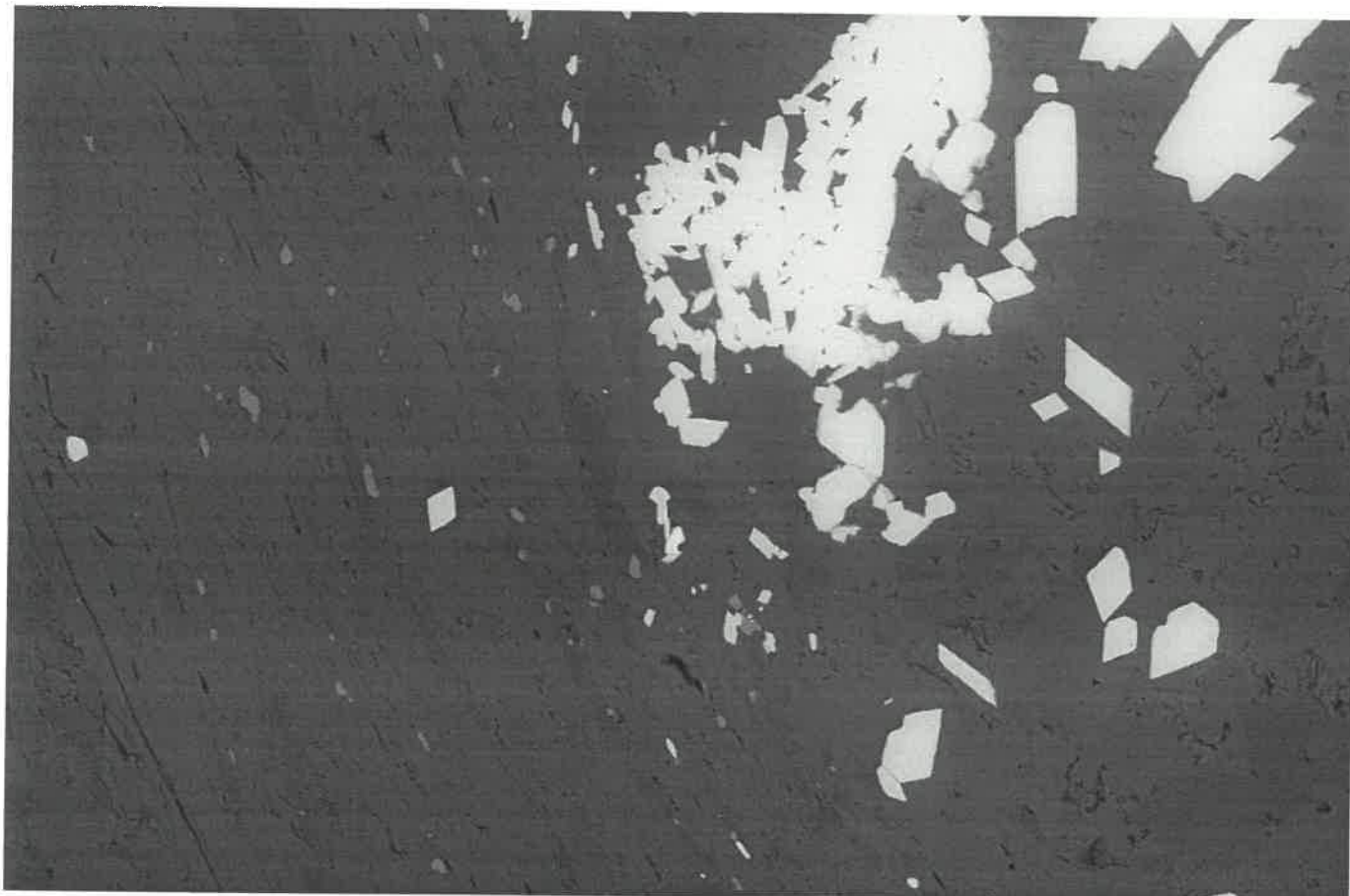
Filament Age = 4001.21 Hours

Date : 21 Apr 2004 Time : 23:45:31

646 2 mo 3

04-51 P(b)





SUPRA 55VP

Serial No. = LEO SUPRA 55VP-23-02

30µm

WD = 21 mm

Mag = 325 X

Detector = QBSD

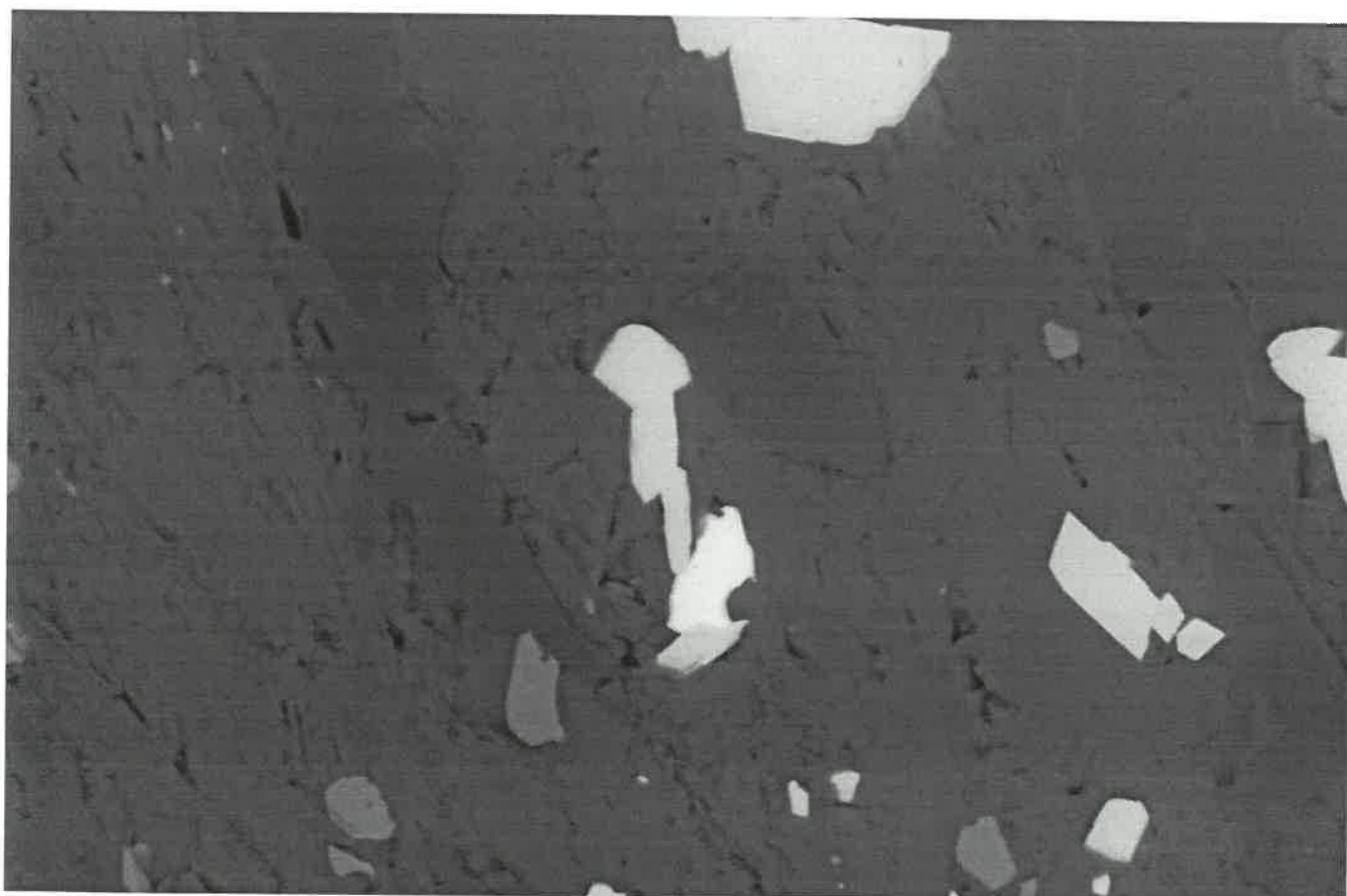
EHT = 25.00 kV

Scan Speed = 5

Gun Vacuum = 6.62e-010 Torr

Filament Age = 4001.29 Hours

Date :21 Apr 2004 Time :23:50:26



SUPRA 55VP

Serial No. = LEO SUPRA 55VP-23-02

10µm

WD = 21 mm

Mag = 1.47 K X

Detector = QBSD

EHT = 25.00 kV

Scan Speed = 5

Gun Vacuum = 6.61e-010 Torr

Filament Age = 4001.33 Hours

Date :21 Apr 2004 Time :23:52:47

646 2 mo4