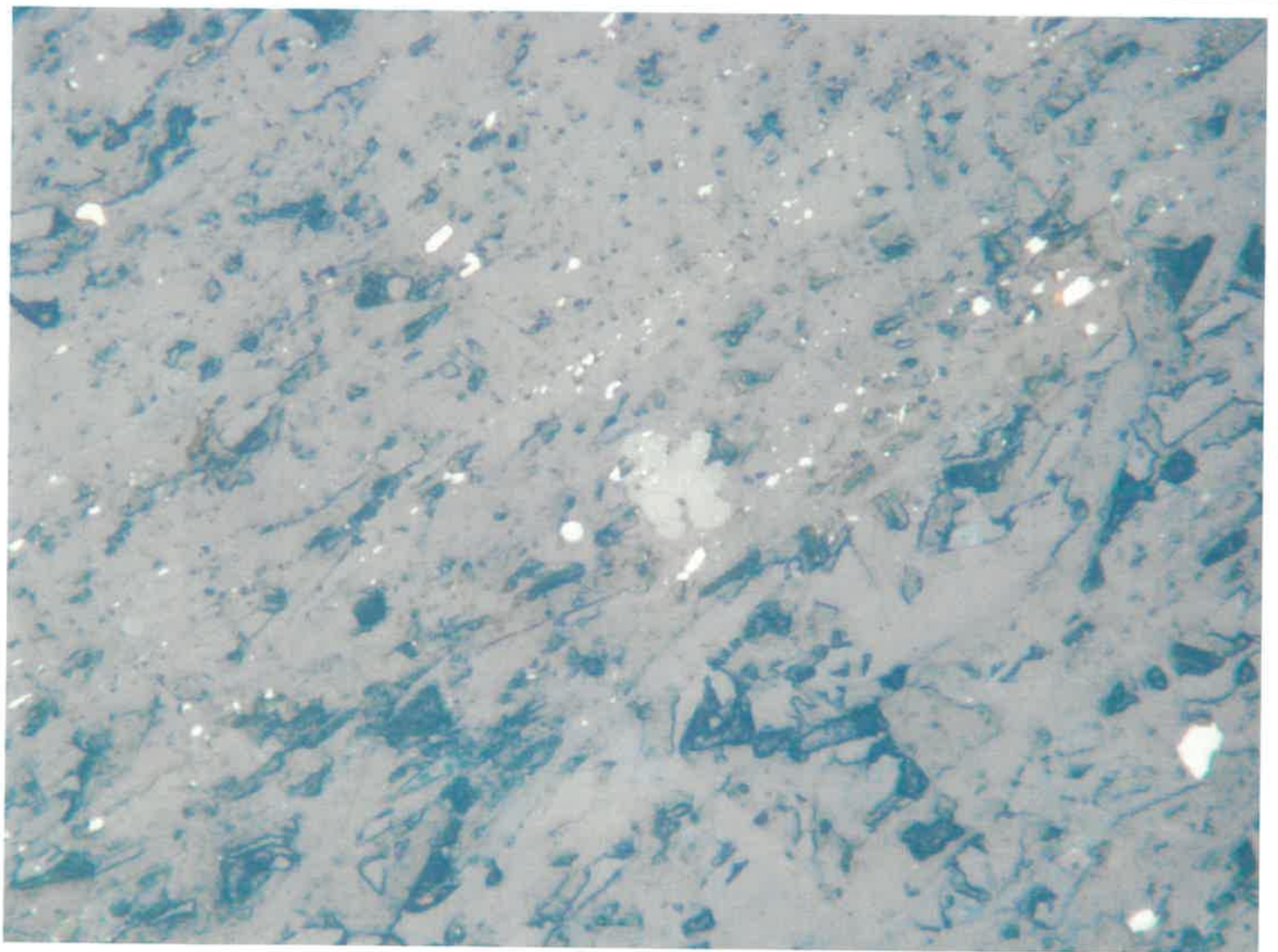
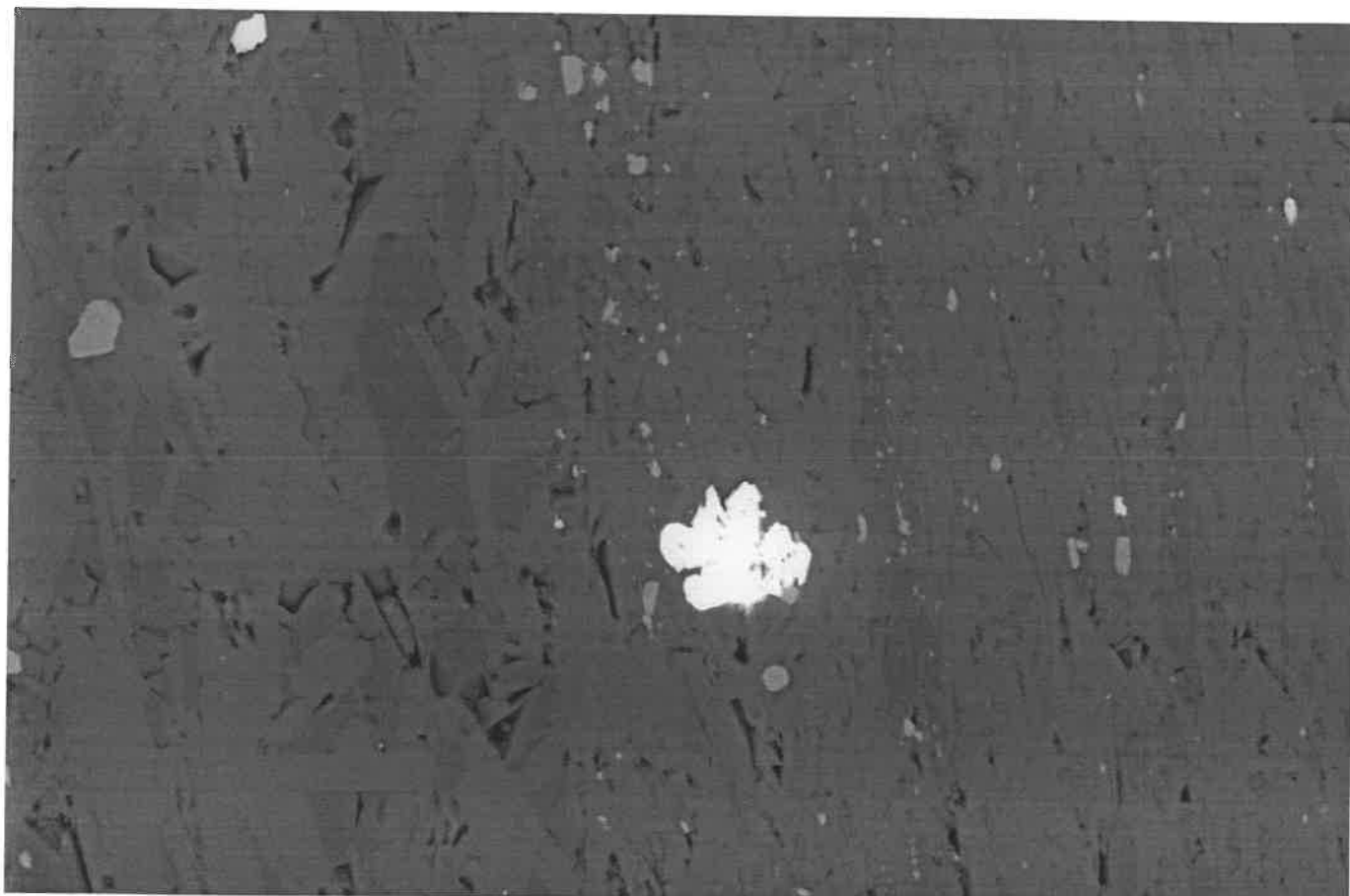


04-51 Q(a)

2-1 1-1





SUPRA 55VP

Serial No. = LEO SUPRA 55VP-23-02

10µm

WD = 16 mm

Detector = QBSD

EHT = 25.00 kV

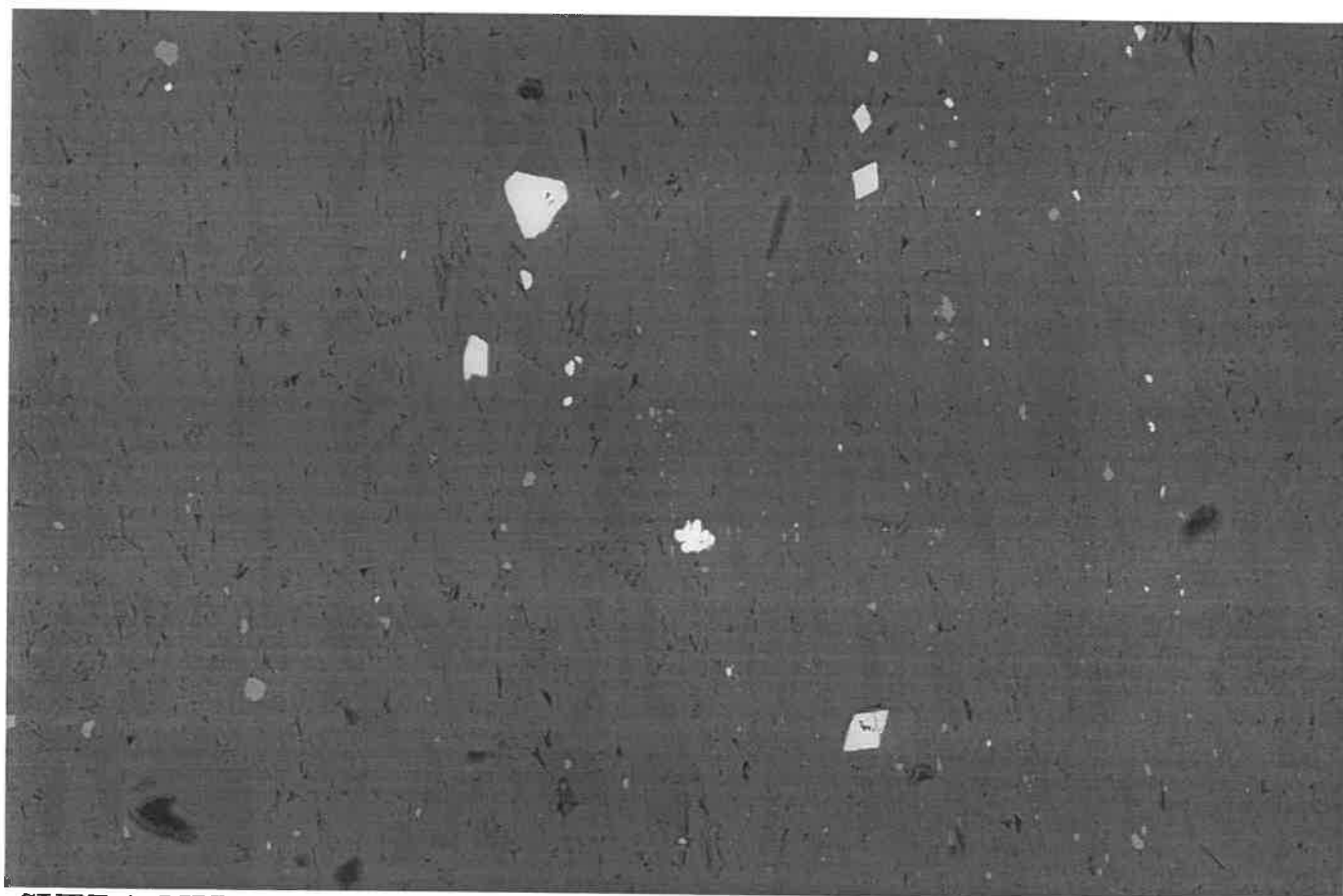
Gun Vacuum = 5.95e-010 Torr

Filament Age = 4087.13 Hours

Date :25 Apr 2004 Time :16:23:25

Mag = 1.12 K X

Scan Speed = 5



SUPRA 55VP

Serial No. = LEO SUPRA 55VP-23-02

30µm

WD = 16 mm

Detector = QBSD

EHT = 25.00 kV

Gun Vacuum = 5.94e-010 Torr

Filament Age = 4087.08 Hours

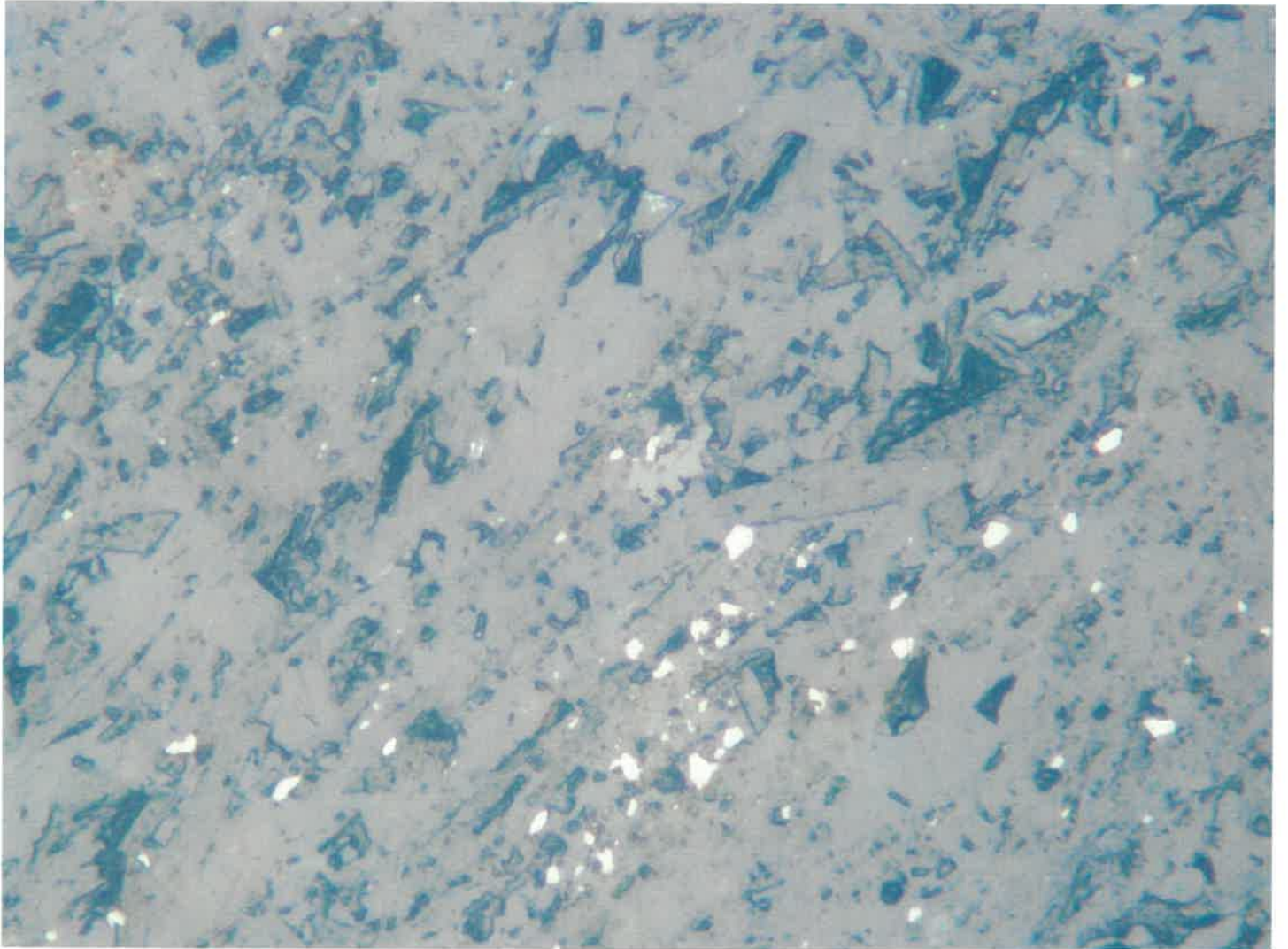
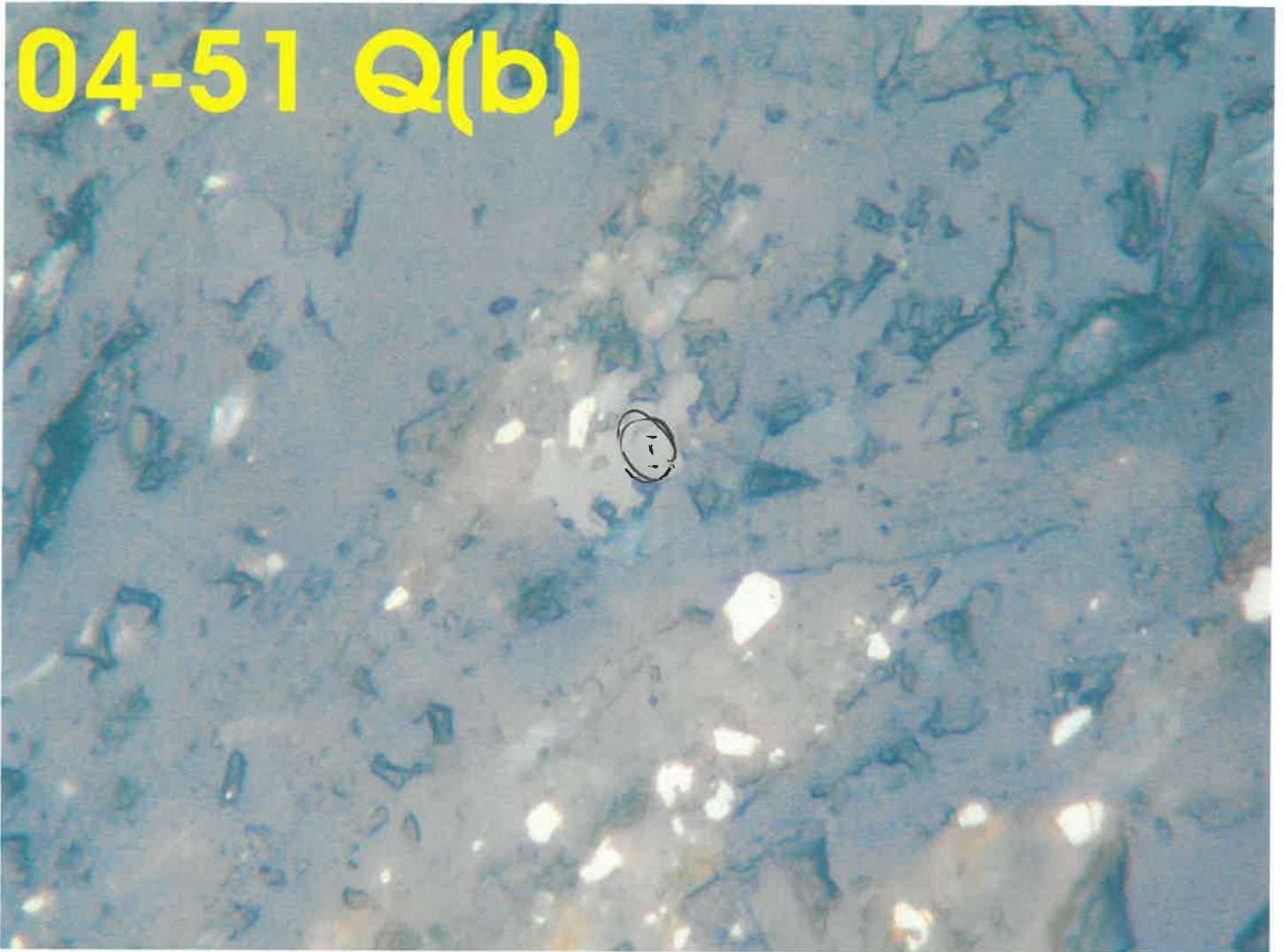
Date :25 Apr 2004 Time :16:21:18

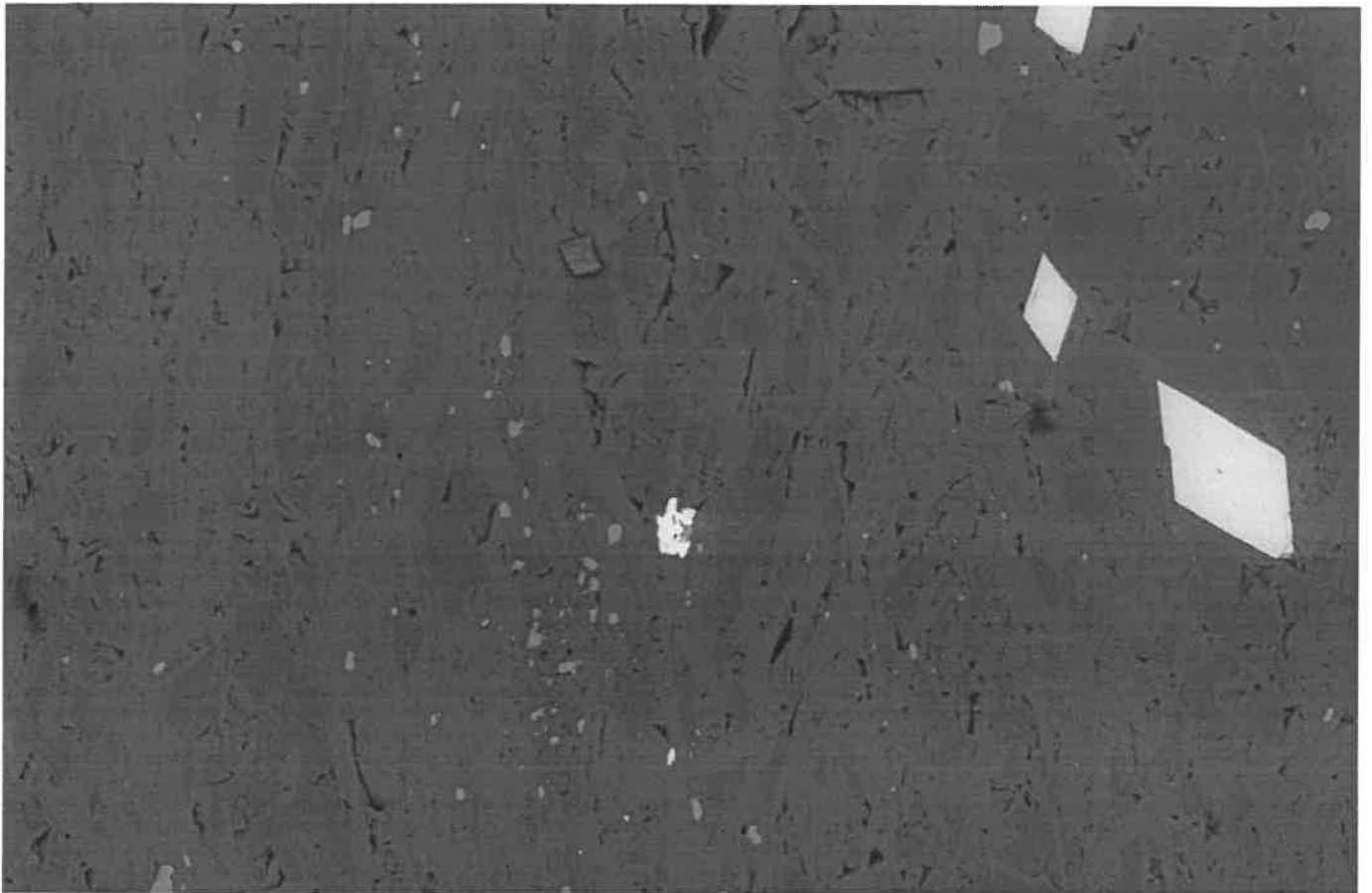
Mag = 295 X

Scan Speed = 5

646 big mol

04-51 Q(b)





SUPRA 55VP

Serial No. = LEO SUPRA 55VP-23-02

20µm

WD = 16 mm

Detector = QBSD

EHT = 25.00 kV

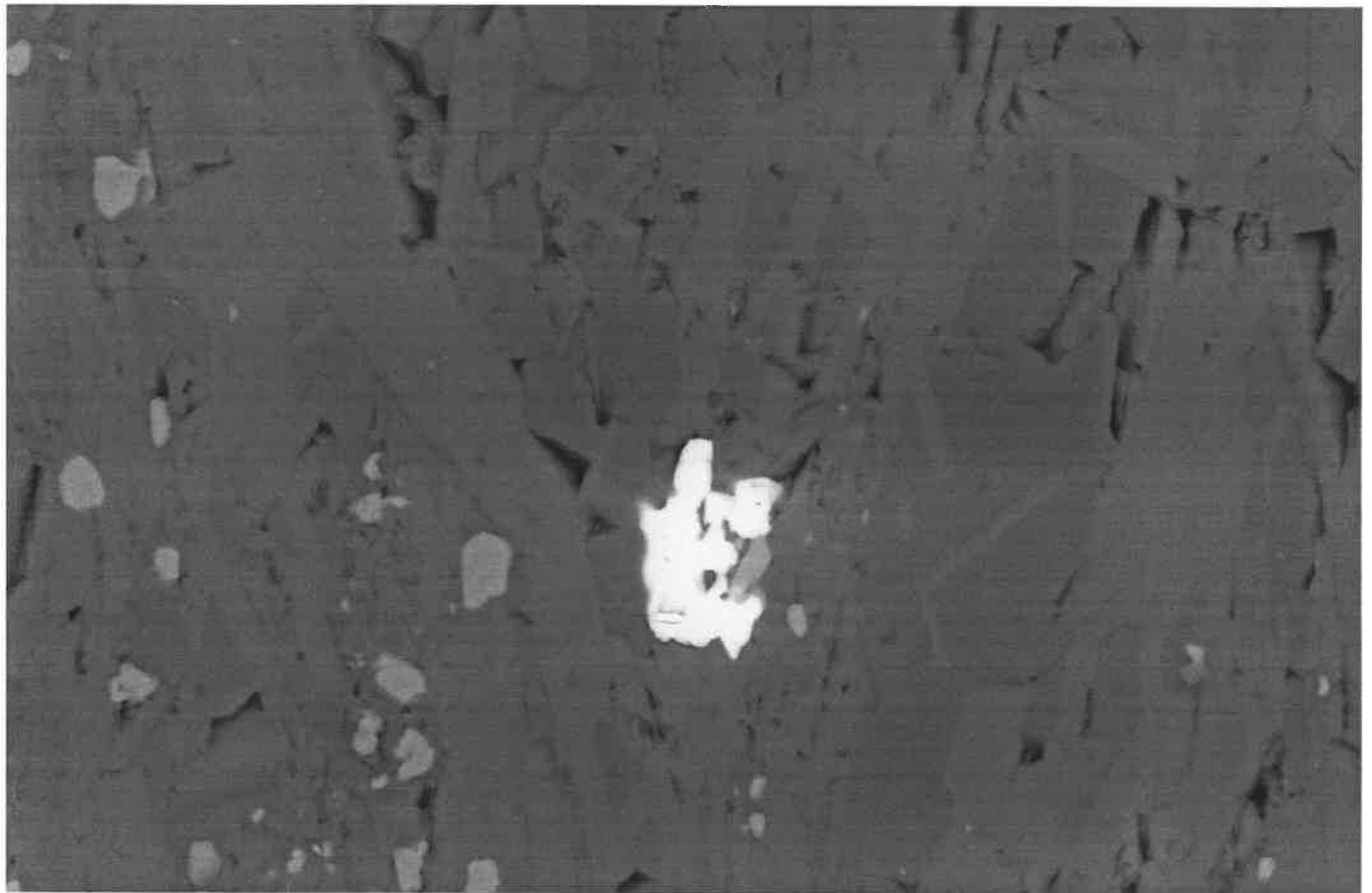
Gun Vacuum = 5.97e-010 Torr

Filament Age = 4087.31 Hours

Date : 25 Apr 2004 Time : 16:34:49

Mag = 548 X

Scan Speed = 5



SUPRA 55VP

Serial No. = LEO SUPRA 55VP-23-02

10µm

WD = 16 mm

Detector = QBSD

EHT = 25.00 kV

Gun Vacuum = 5.97e-010 Torr

Filament Age = 4087.34 Hours

Date : 25 Apr 2004 Time : 16:36:40

Mag = 2.01 K X

Scan Speed = 5

646 big mol