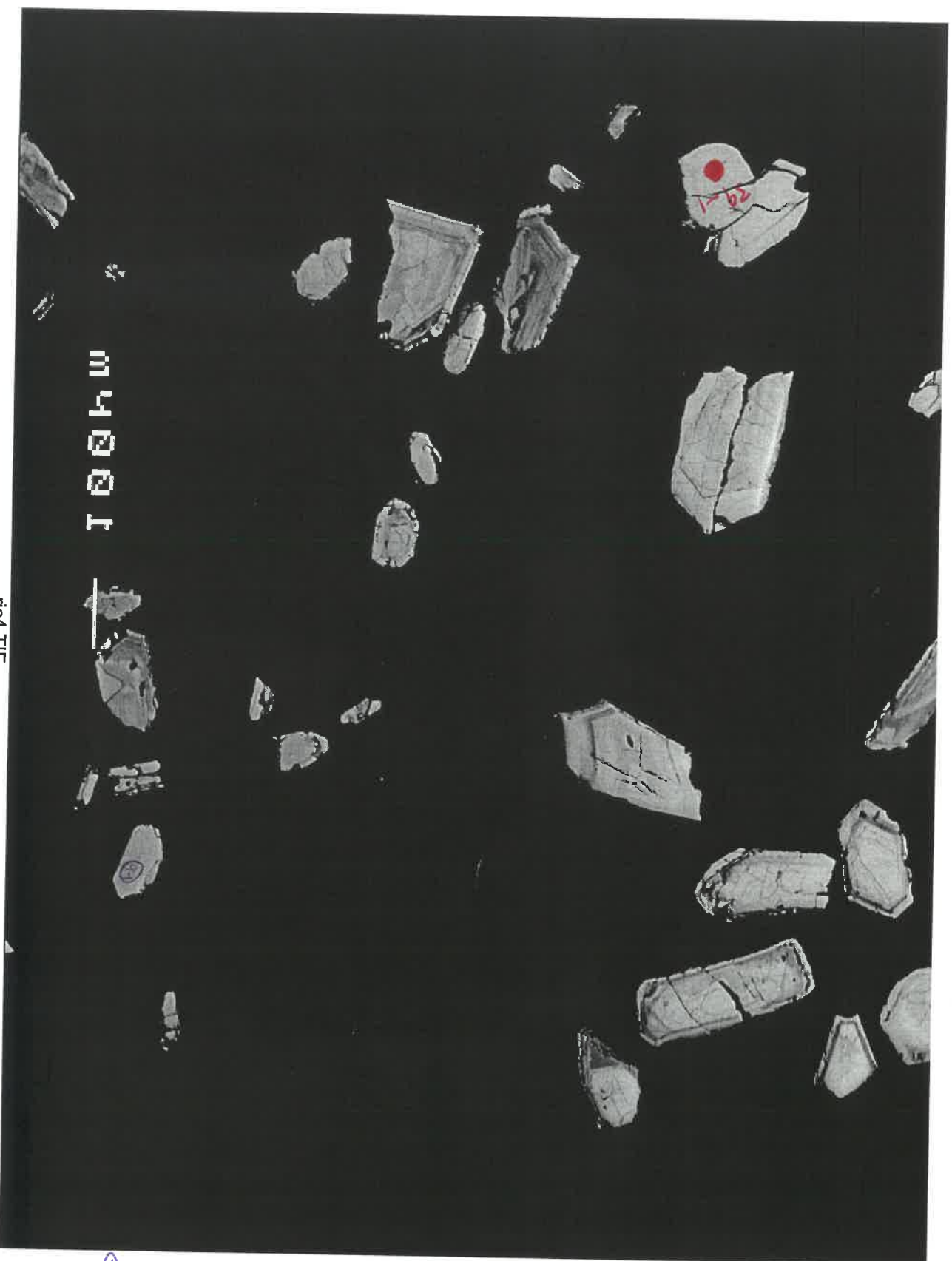


Population C: BSE images



rjcs.tif

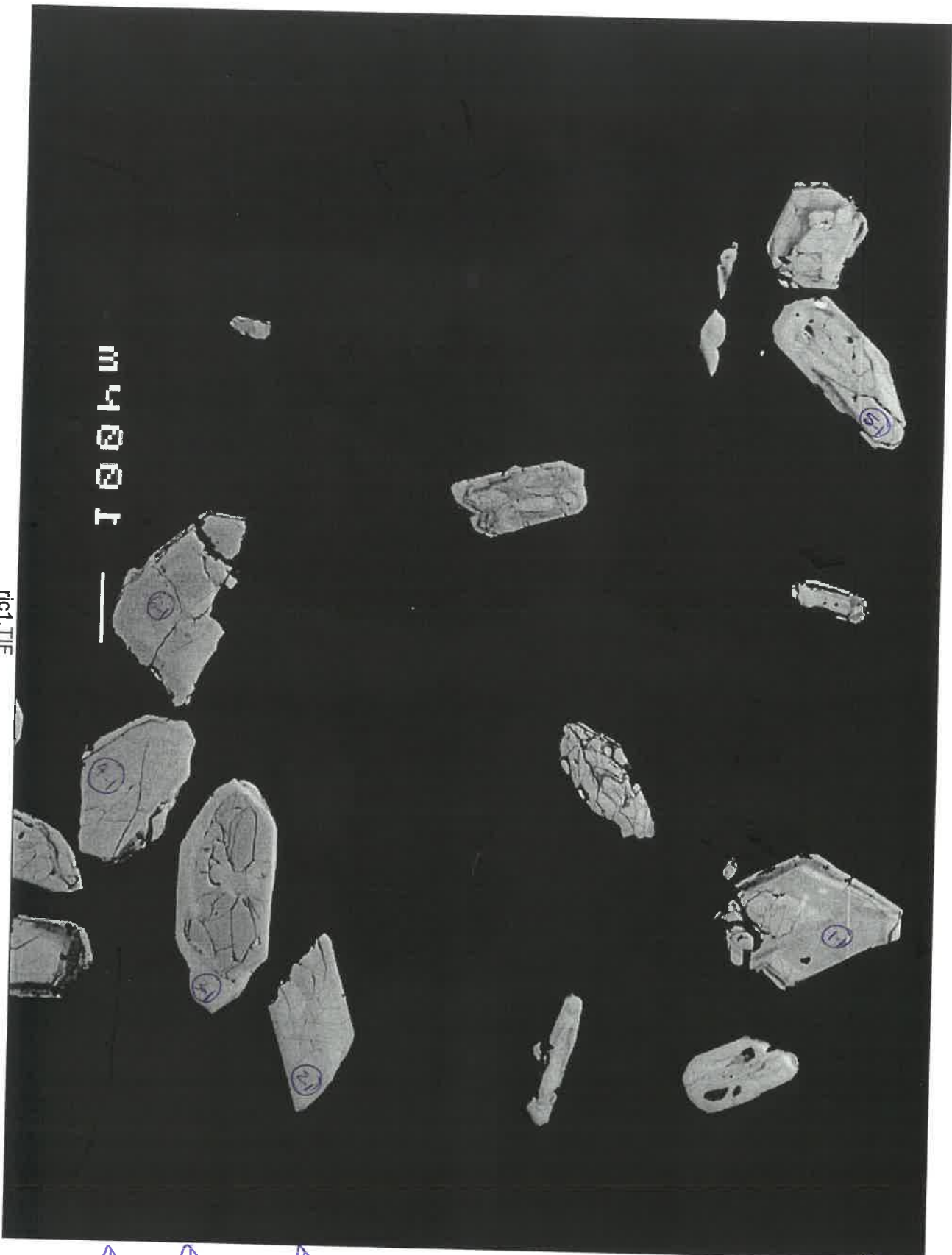
Population C: BSE images



← a-1
5% div.
- 2641+22

fig4.TIF

Population C: BSE images



5-1
disc. →

6-1
disc. →

M4001

←
1-1
disc

← 2-1
2638-12

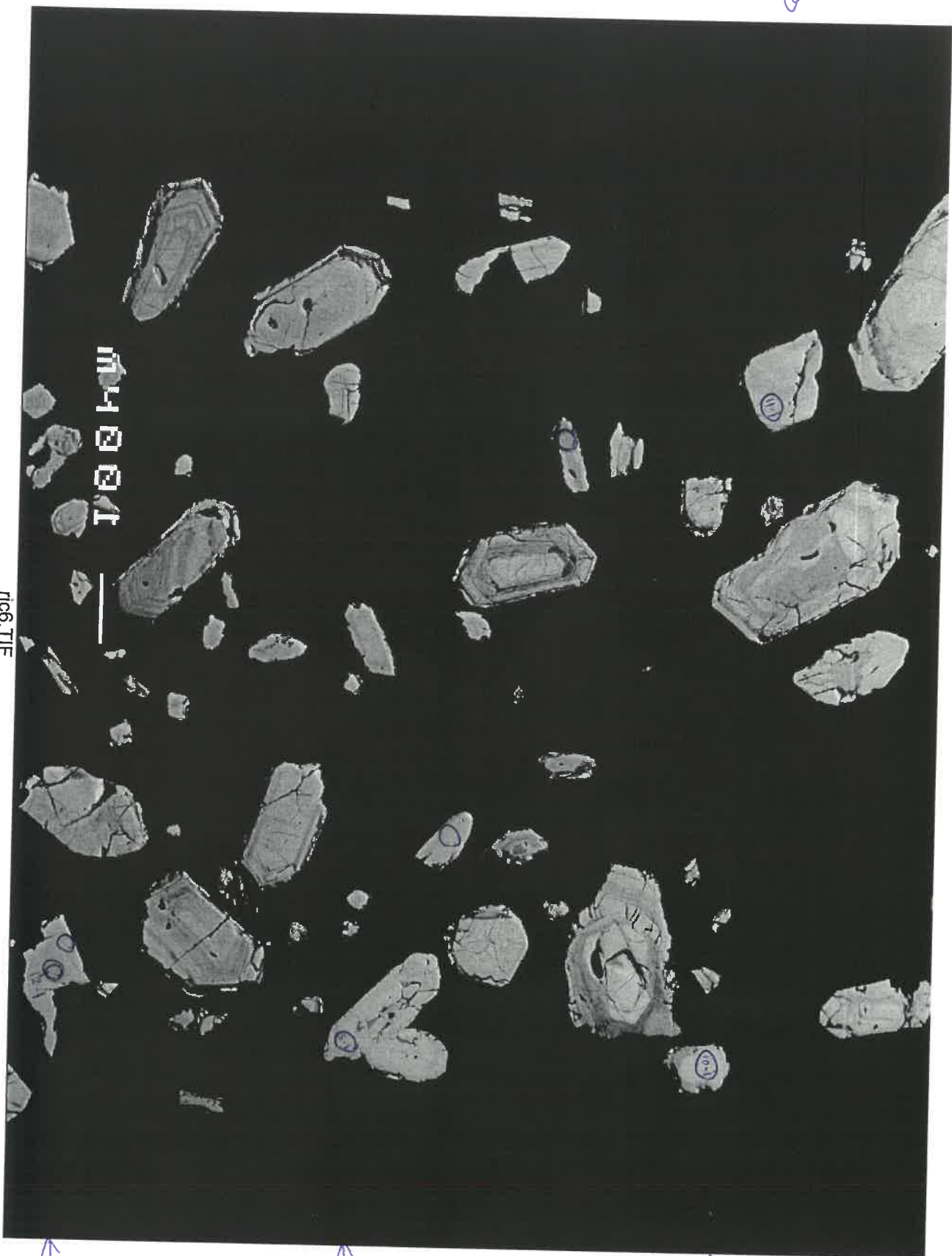
← 3-1
disc

← 4-1
disc.

rj01.TIF

Population C: BSE images

11-1
269319 →



← 10-1
265718

← 8-1 disc

← 12-1
-disc

7j06.TIF

Population C: BSE images

13-1 →
205448

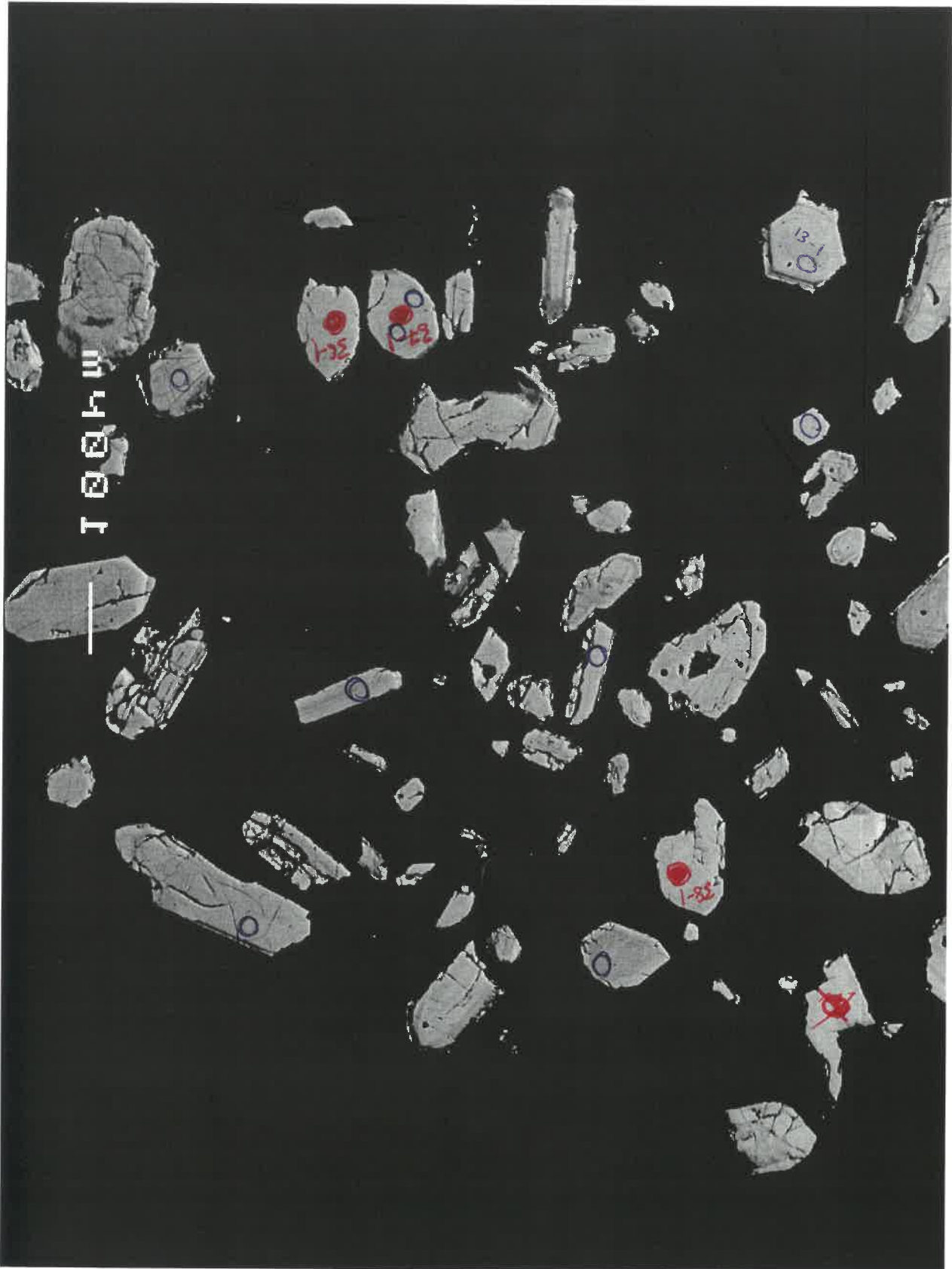


fig7.TIF

Population C: BSE images



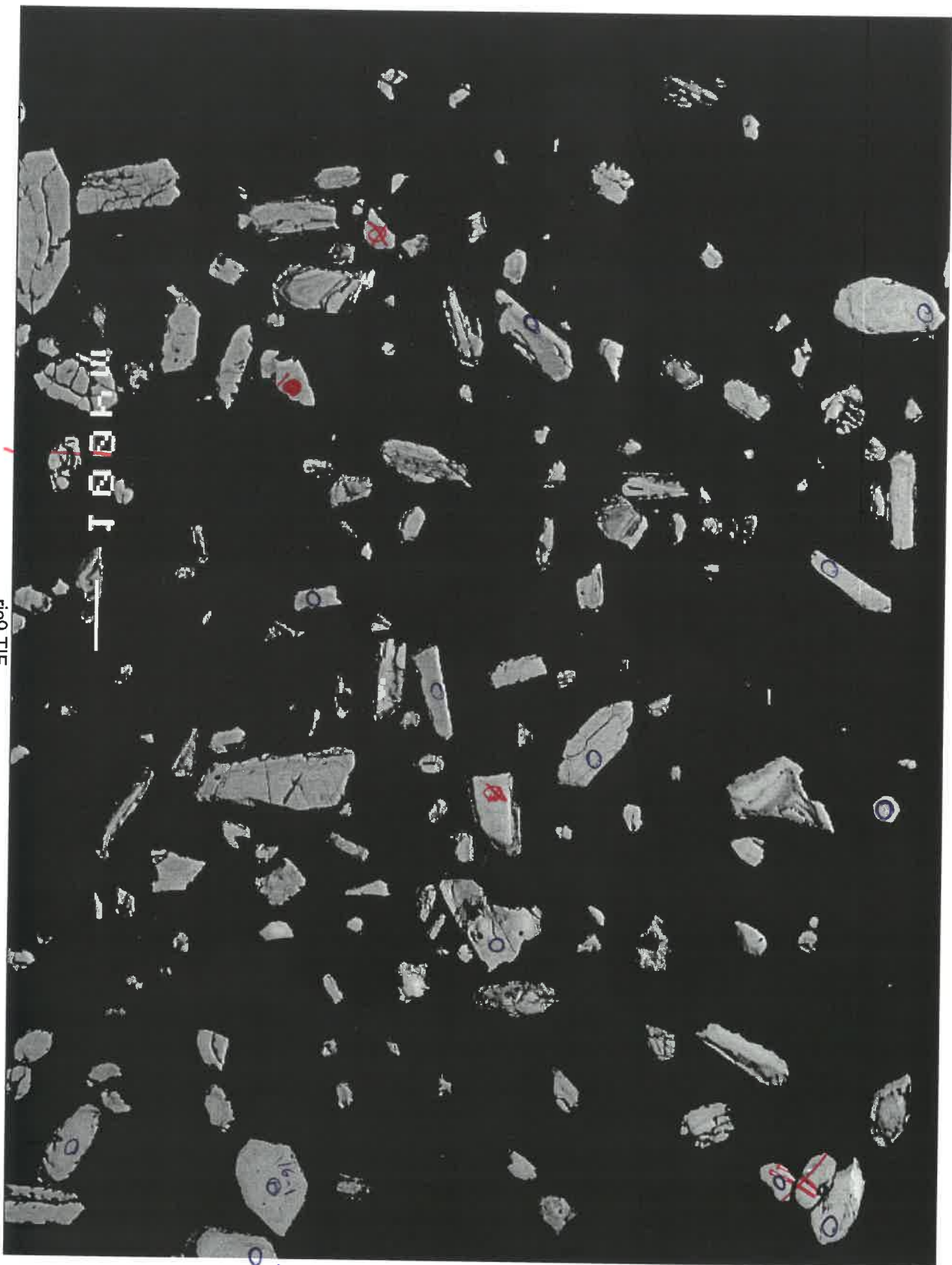
15-1
disc



← 14-1
disc

rfc8.tif

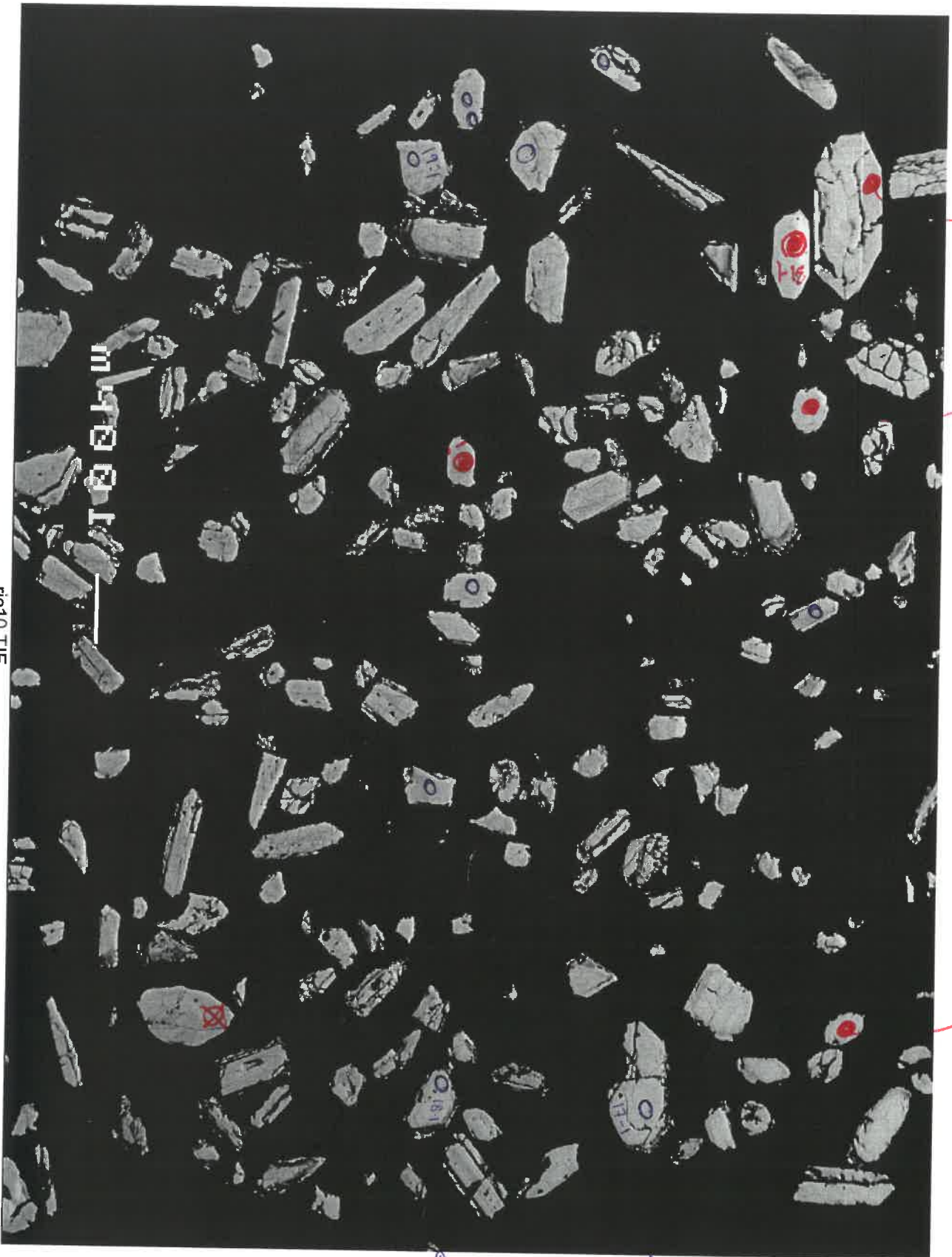
Population C: BSE images



16-1
26867

1-35-1

fic9.tif



Population C: BSE images

34-1

32-1

33-1

19-1
disc →

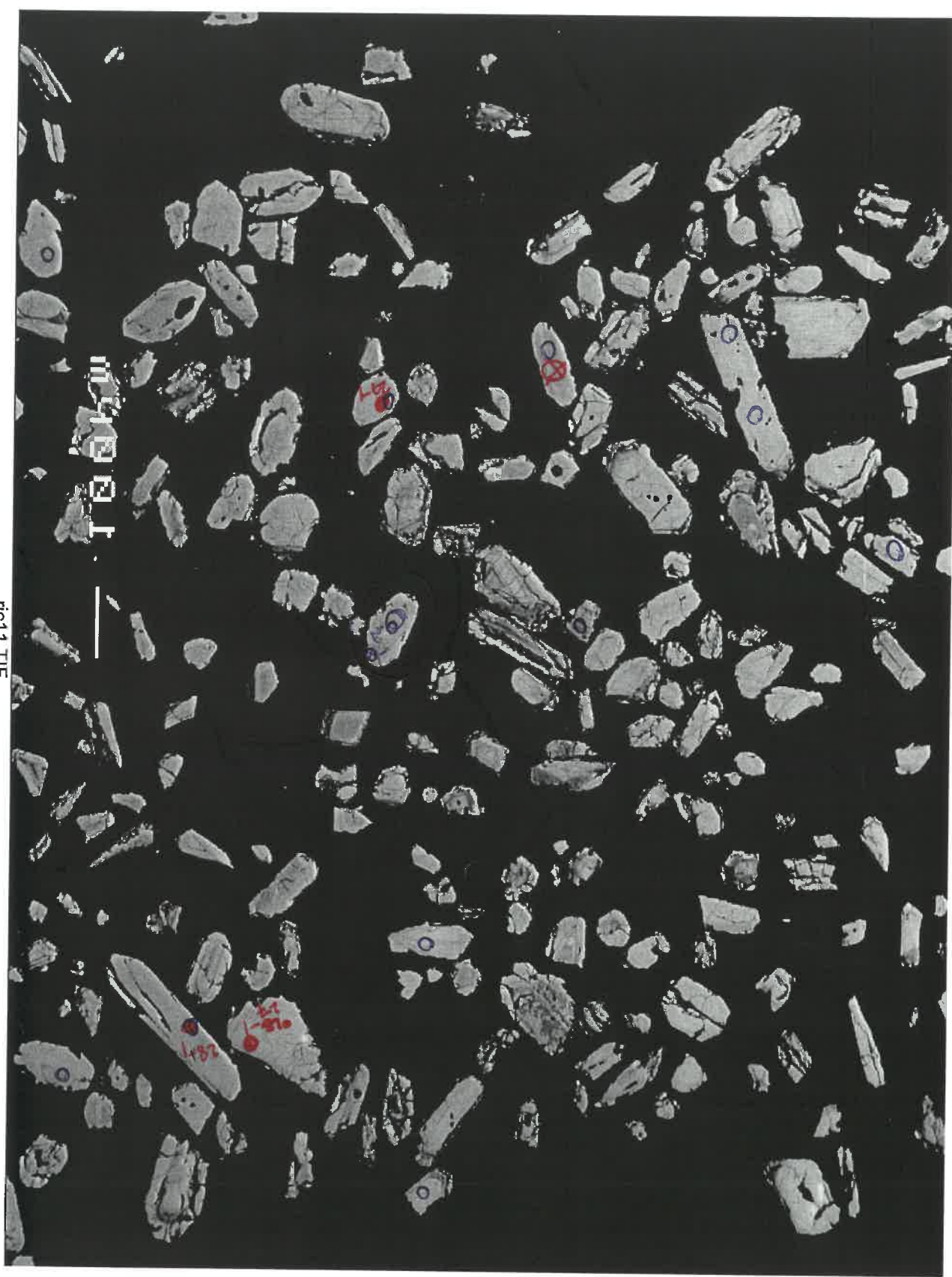
17-1
263217

18-1
264017

micrograph

fig10.tif

Population C: BSE images

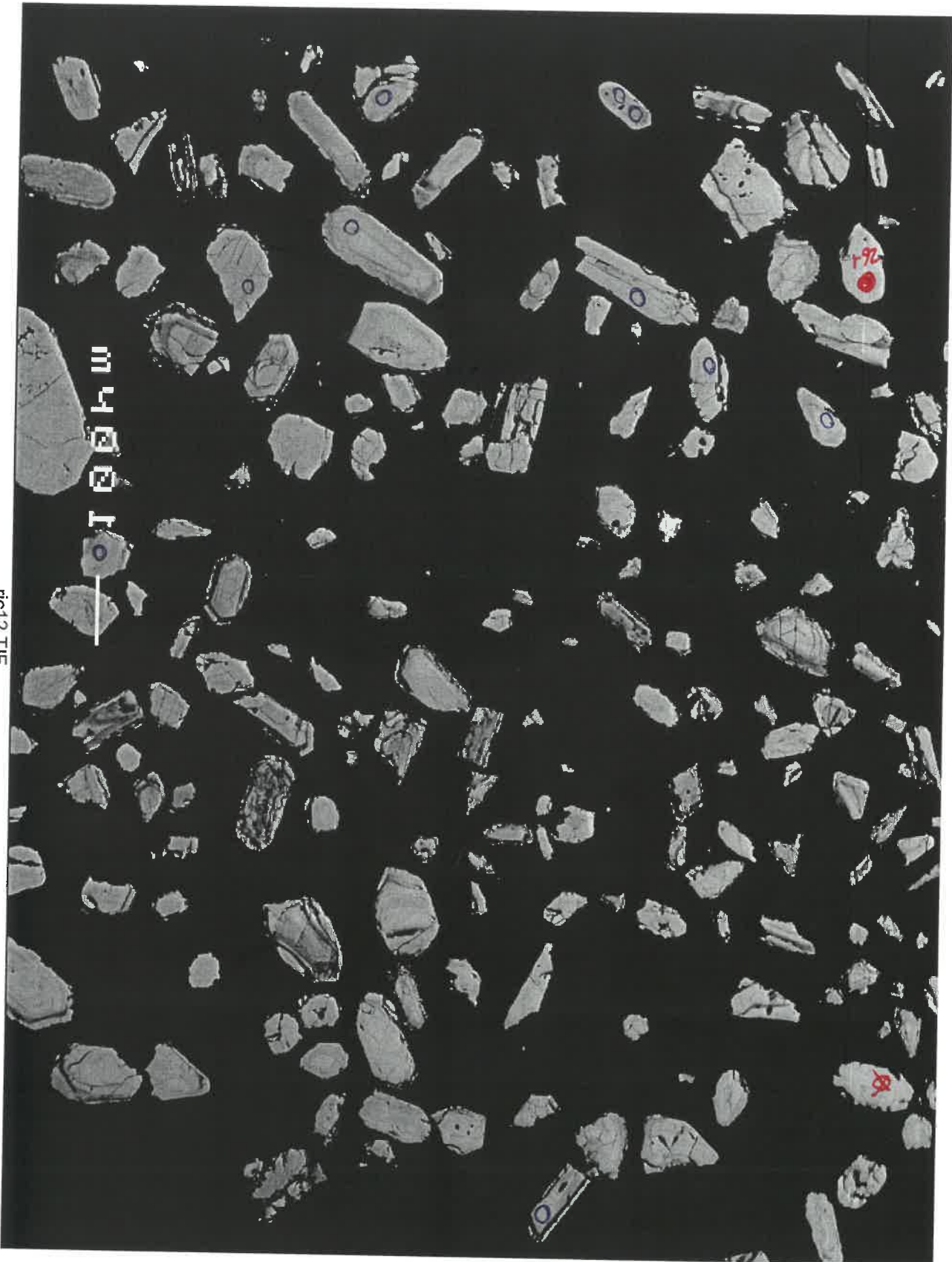


20-1
-disc

*

fig11.tif

Population C: BSE images



rgc12.tif

Population C: BSE images



fig13.TIF

Population C: BSE images



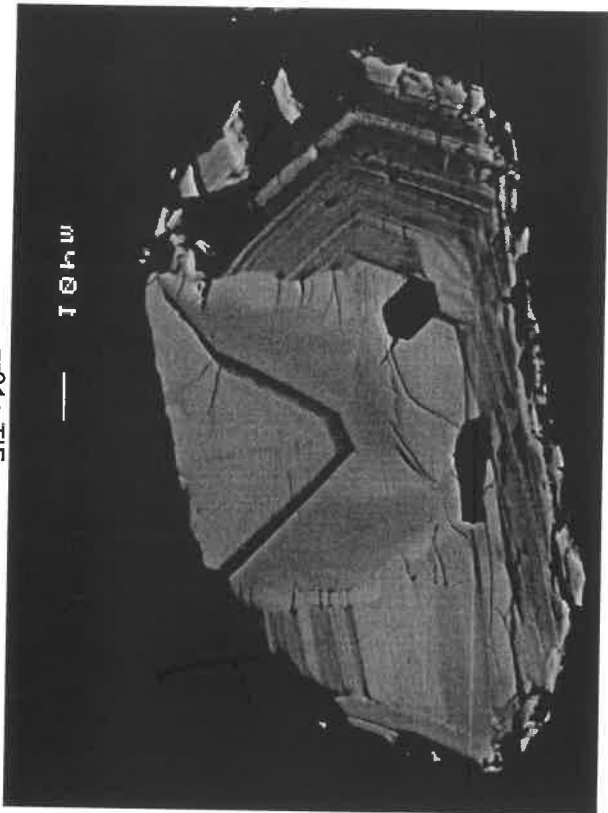
ijc14.tif

Population C: BSE images



rjc15.tif

Population C: BSE images



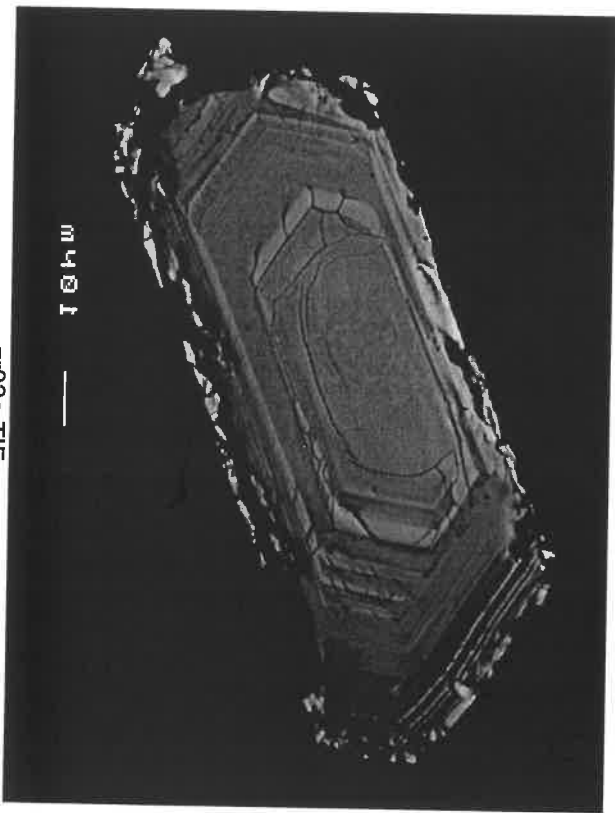
zr01a.tif



zr02a.tif

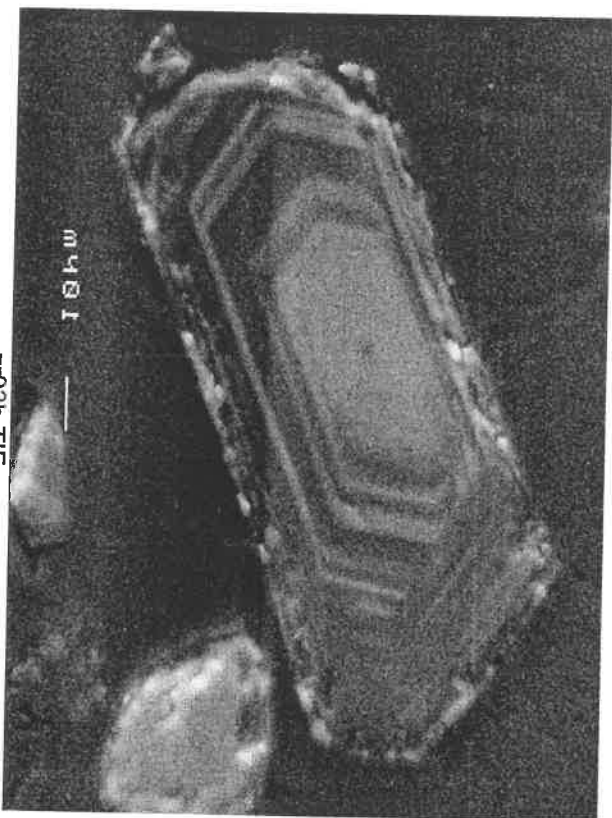


zr02b.tif

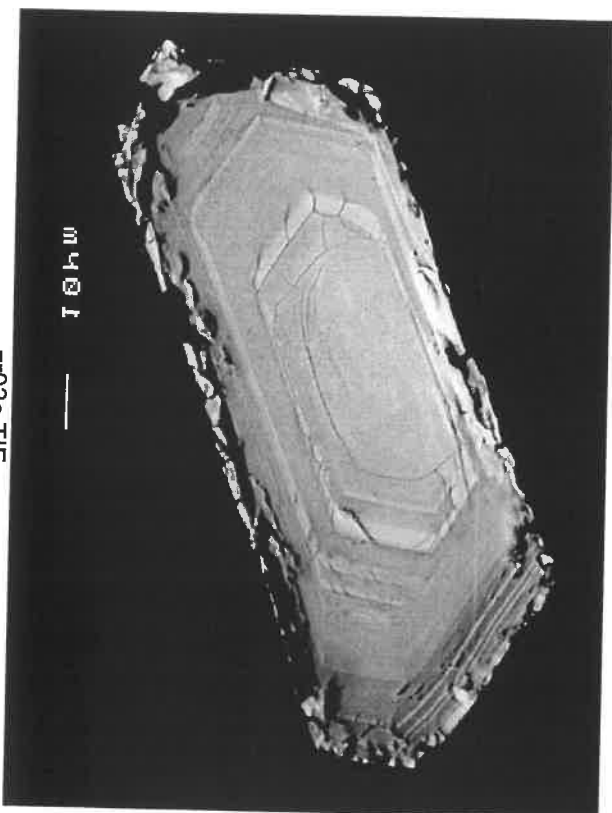


zr03a.tif

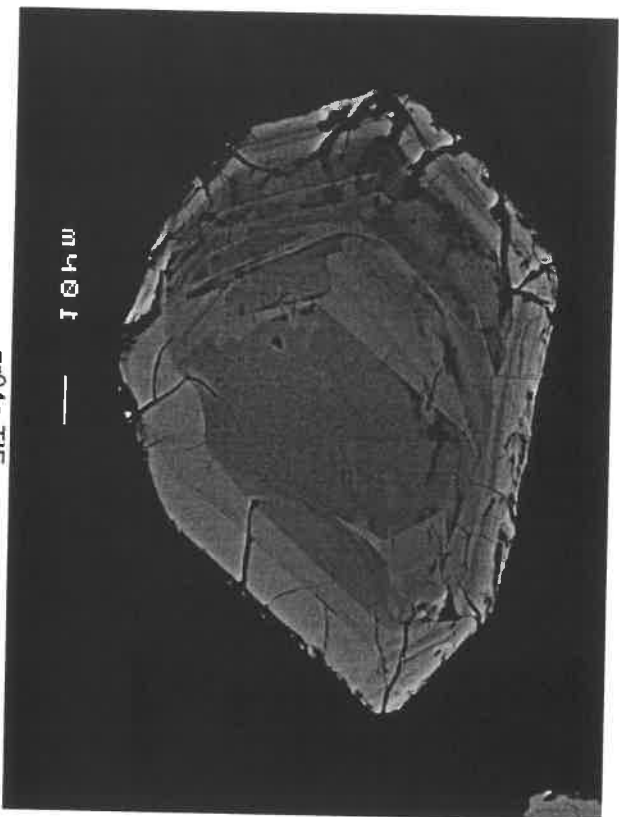
Population C: BSE images



Zr03b.TIF



Zr03c.TIF

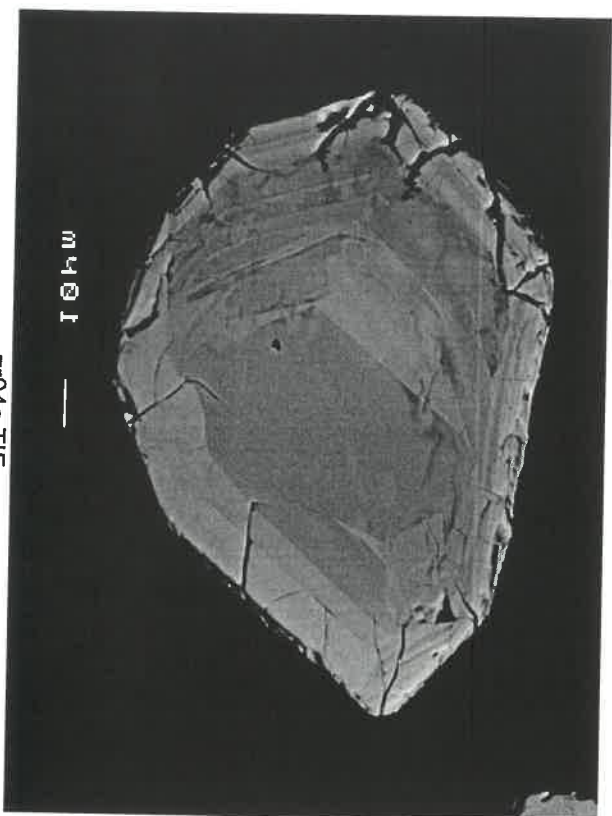


Zr04a.TIF

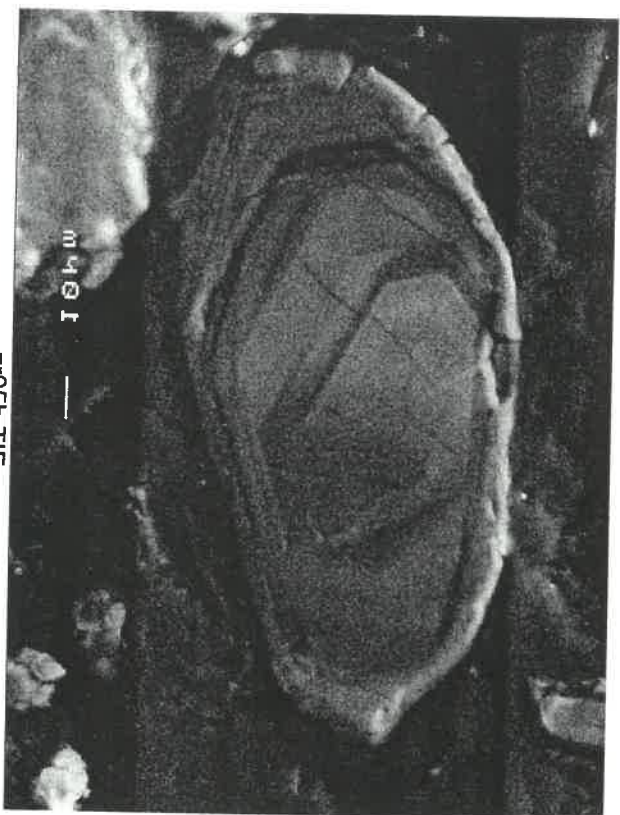


Zr04b.TIF

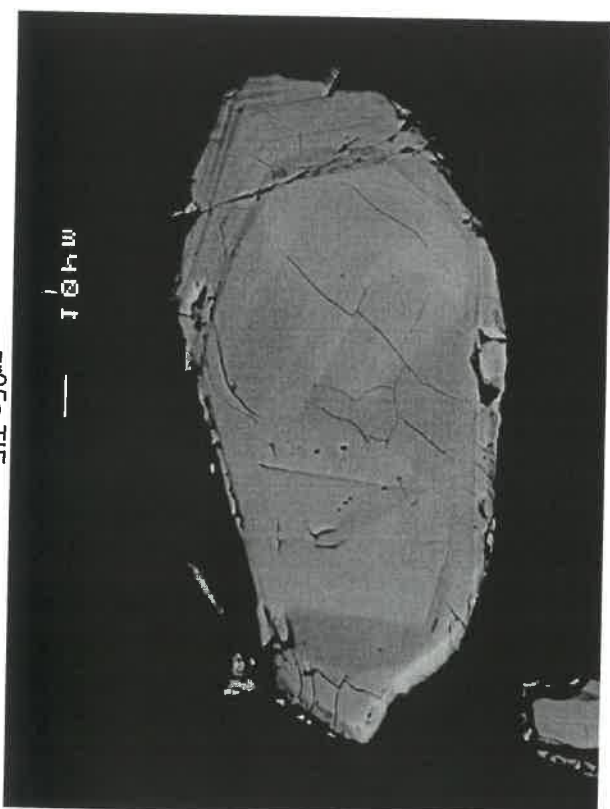
Population C: BSE images



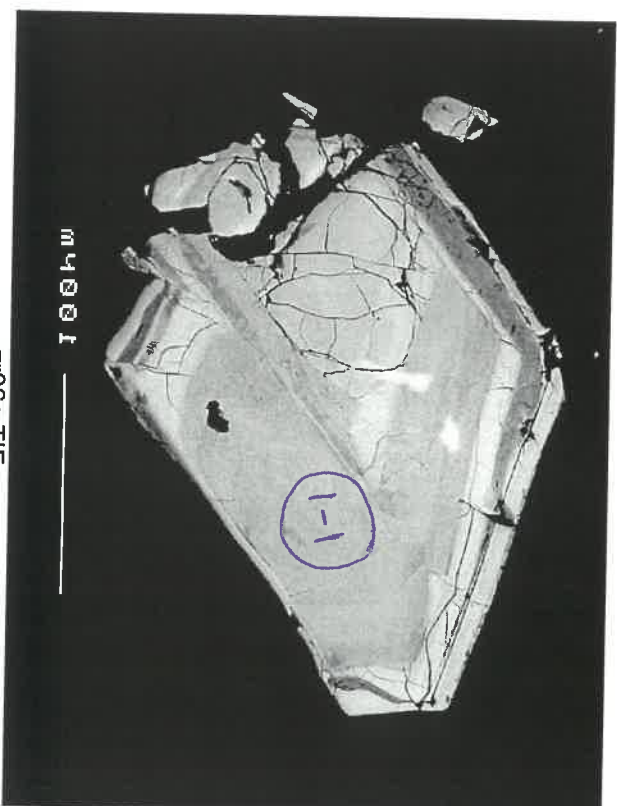
zr04c.tif



zr05b.tif

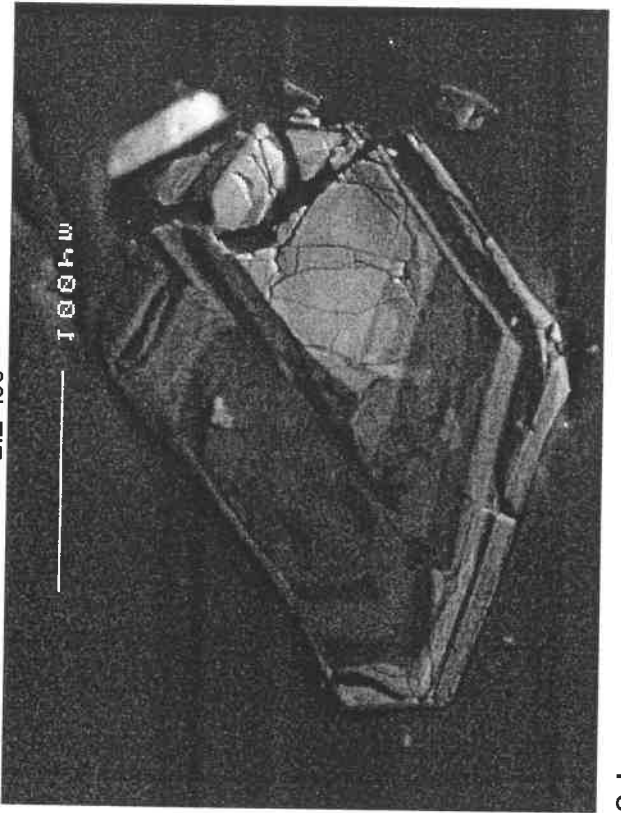


zr05a.tif

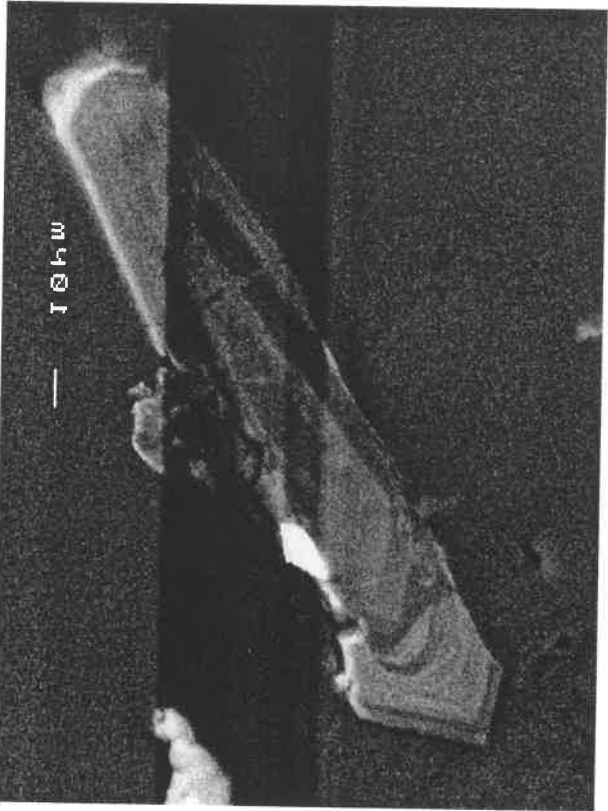


zr06a.tif

Population C: BSE images



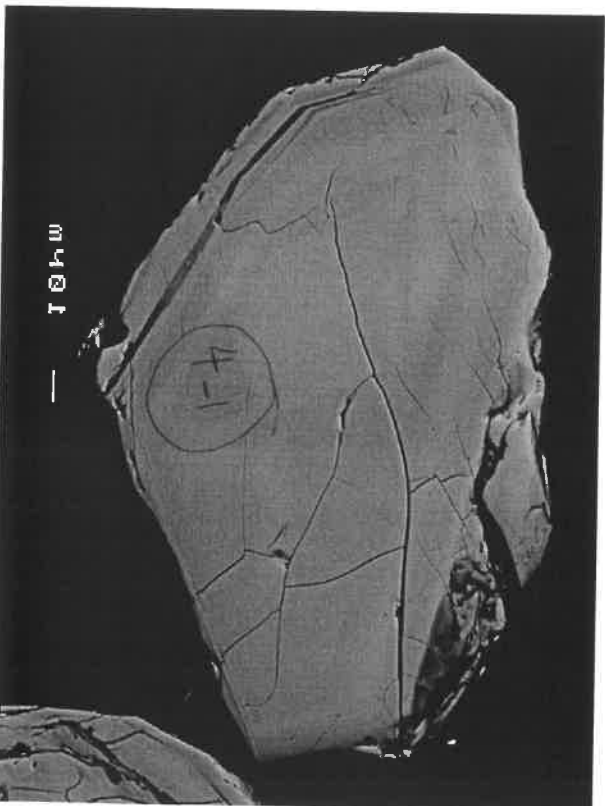
zr06b.tif



zr07b.tif

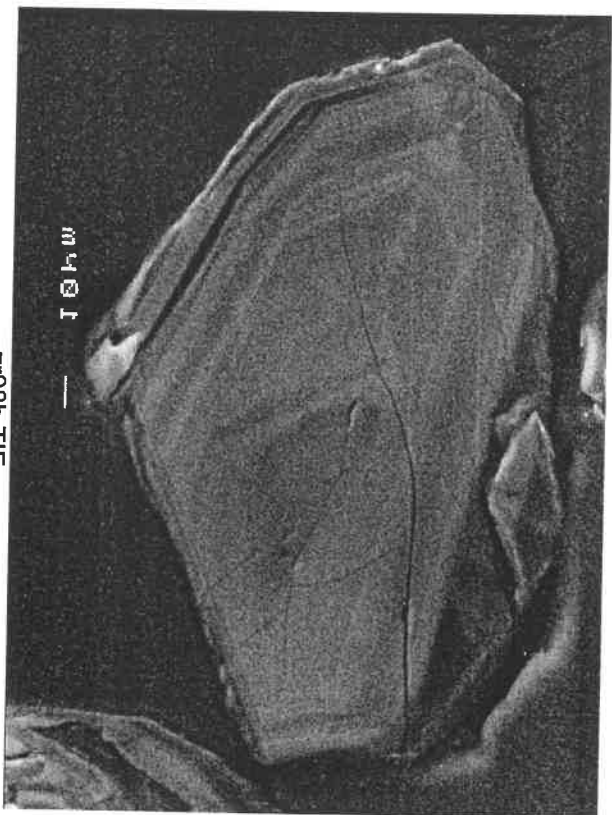


zr07a.tif

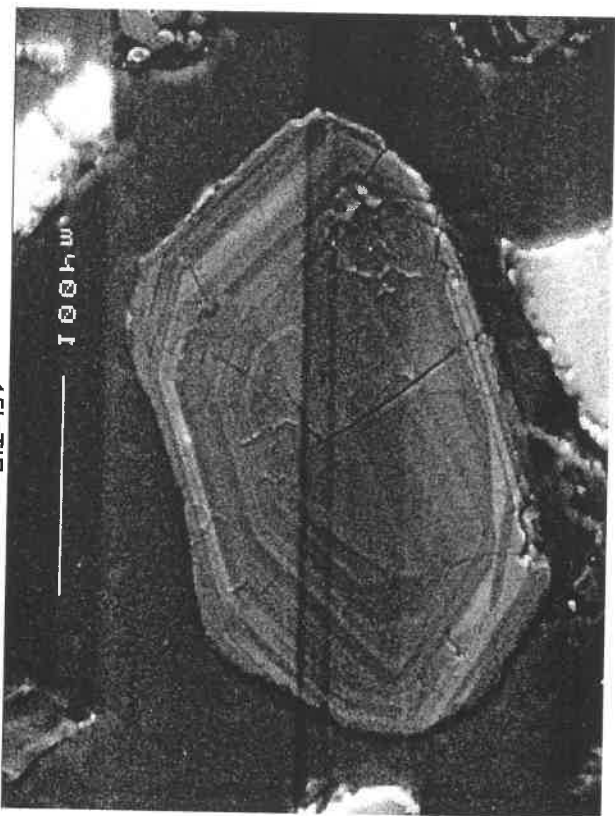


zr08a.tif

Population C: BSE images



zr08b.tif



zrc15b.tif

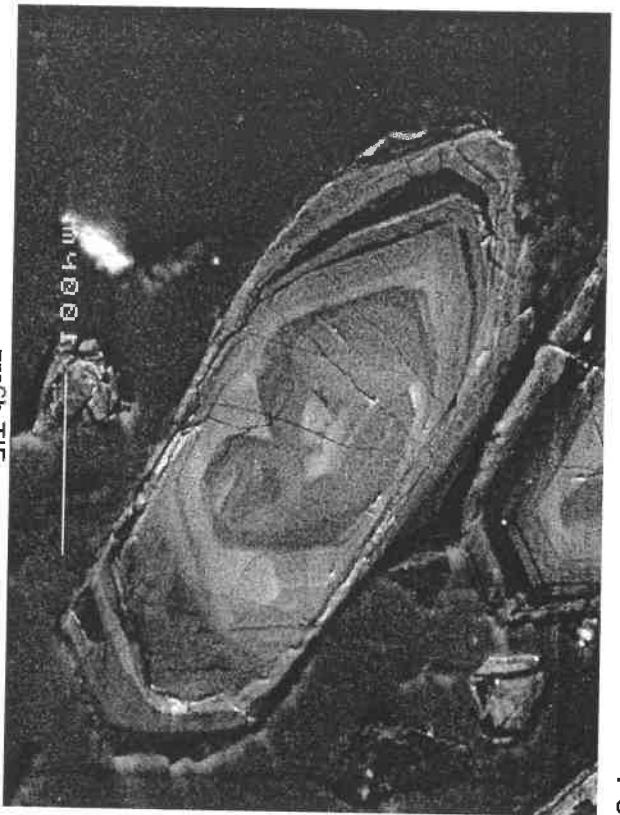


zrc15.tif



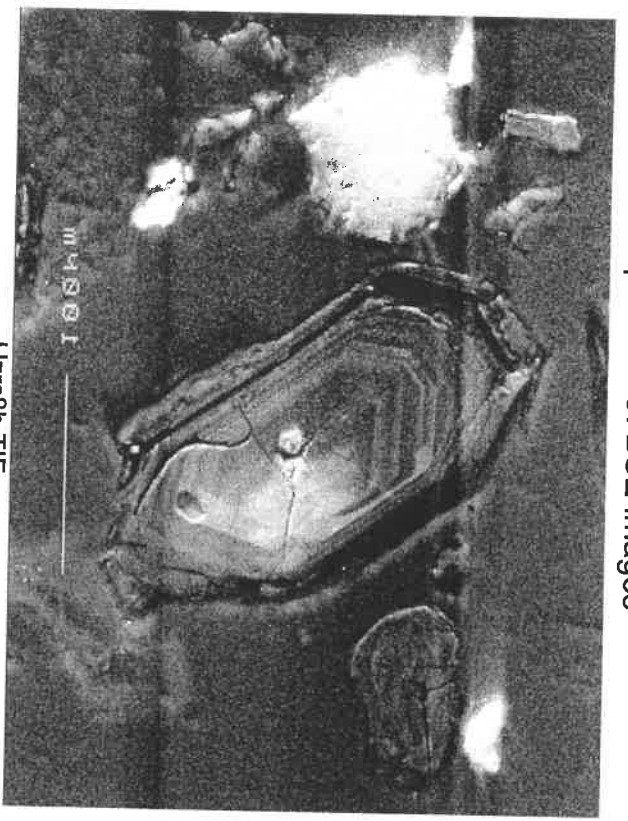
zrc6.tif

Population C: BSE images

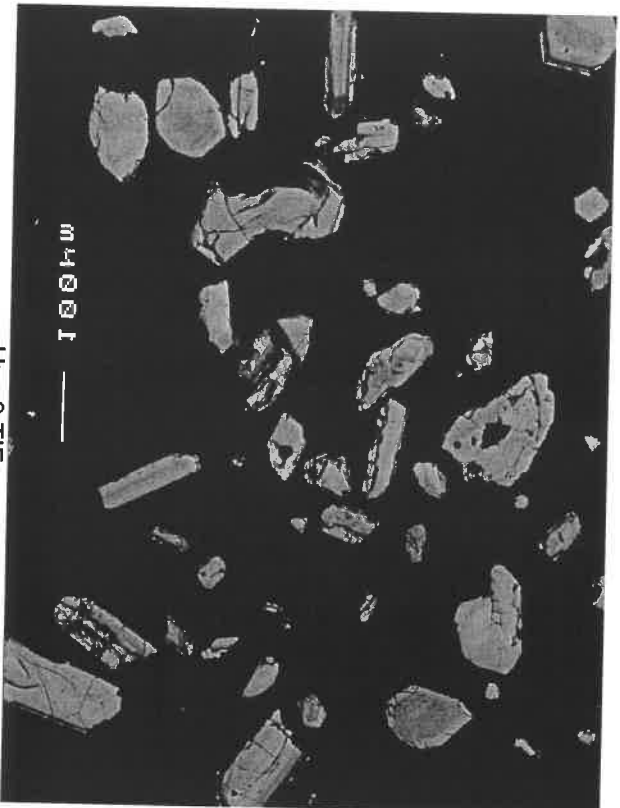


zrc6b.tif

Population C: BSE images



Hzrc8b.tif



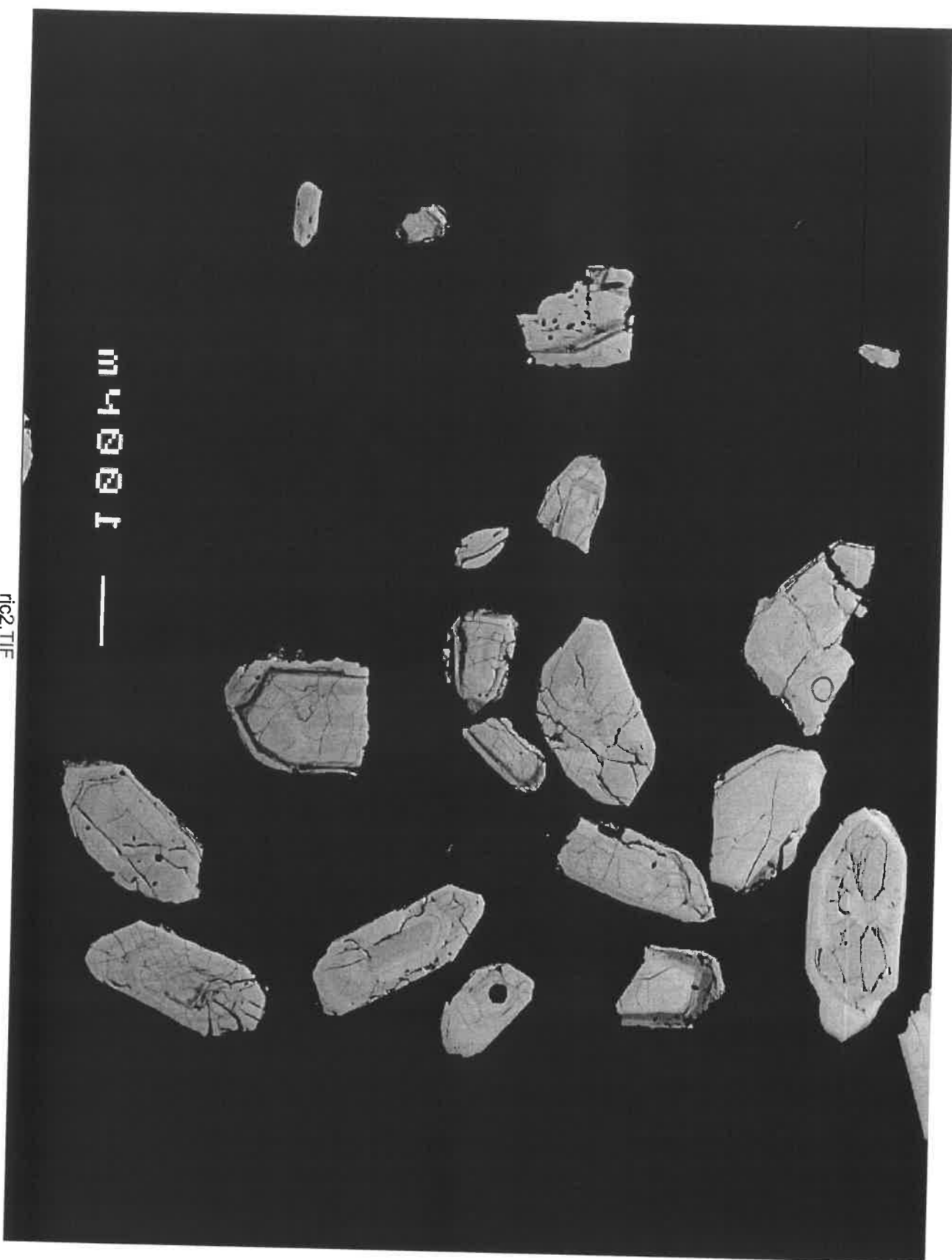
Hzrc9.tif

Population C: BSE images



m4001

rgc16.tif



m4001 —

ffc2.tif

Population C: BSE images



rjcs.tif