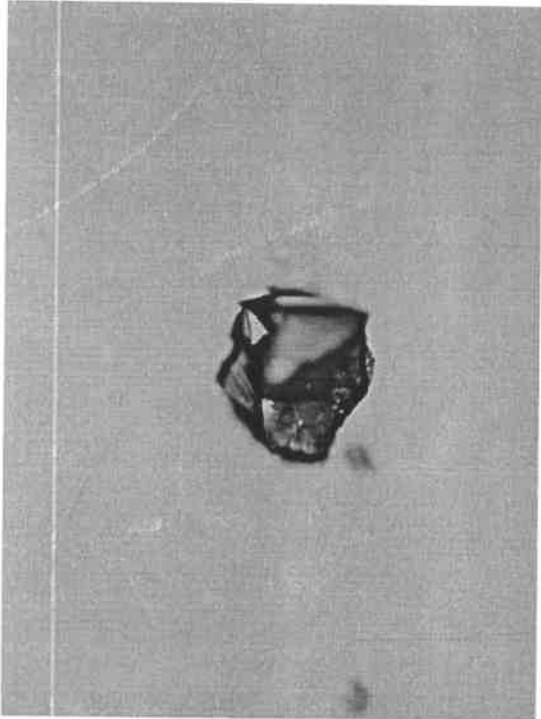
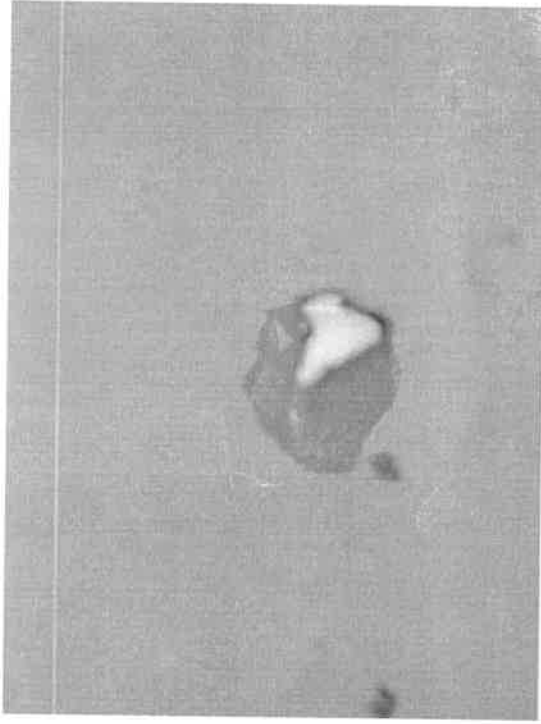


RL/TL

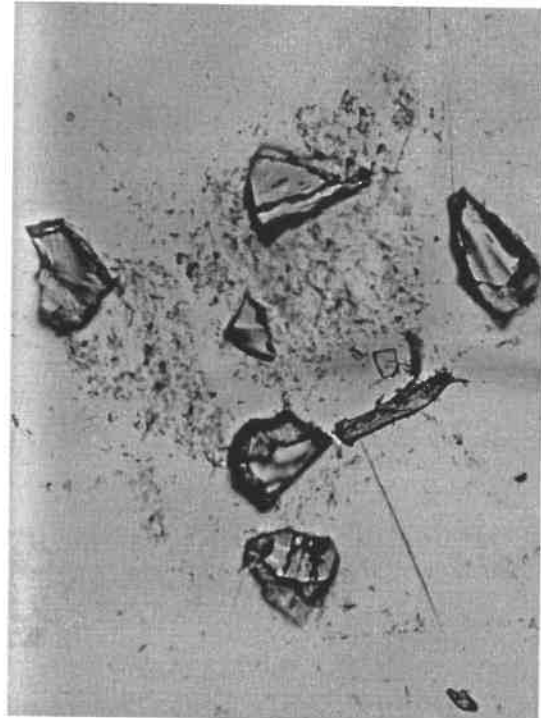
04-84 STANDARDS NORMAL



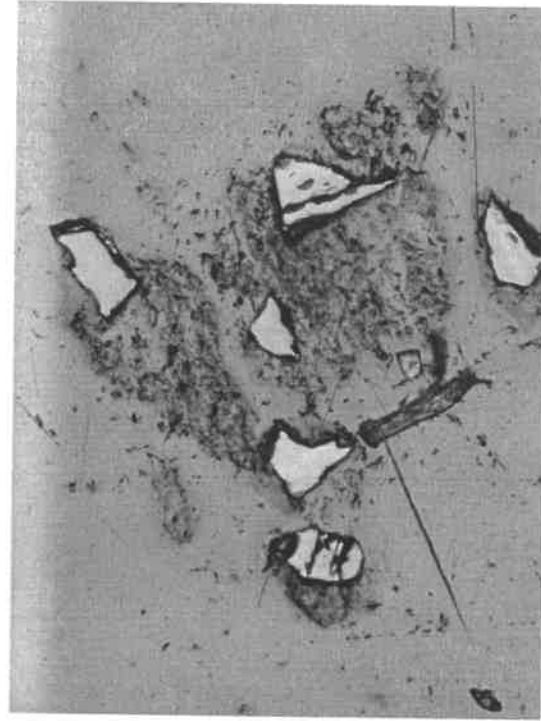
DSCN9437.JPG
1160x870, 32bit, 1011.6KB



DSCN9438.JPG
1160x870, 32bit, 1.2MB

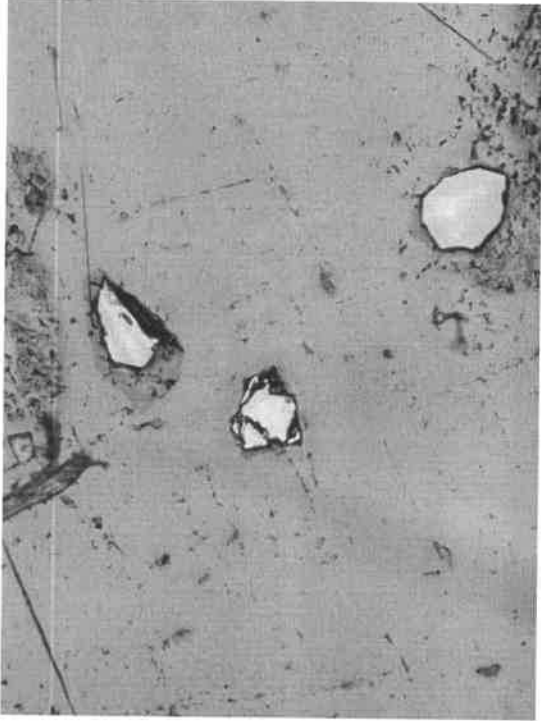


DSCN9439.JPG
1160x870, 32bit, 1.0MB

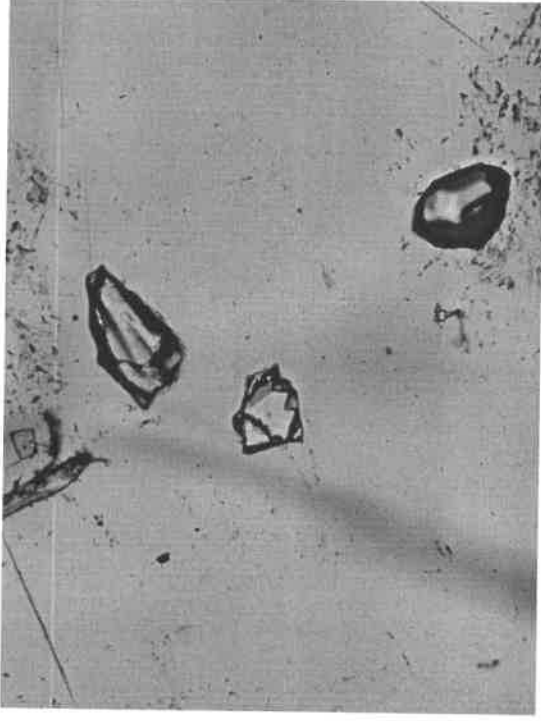


DSCN9440.JPG
1160x870, 32bit, 1.0MB

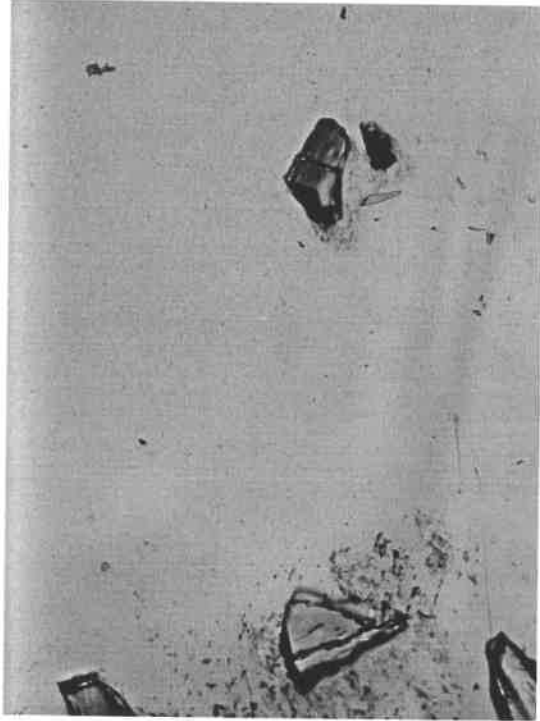
04-84 STANDARDS NORMAL



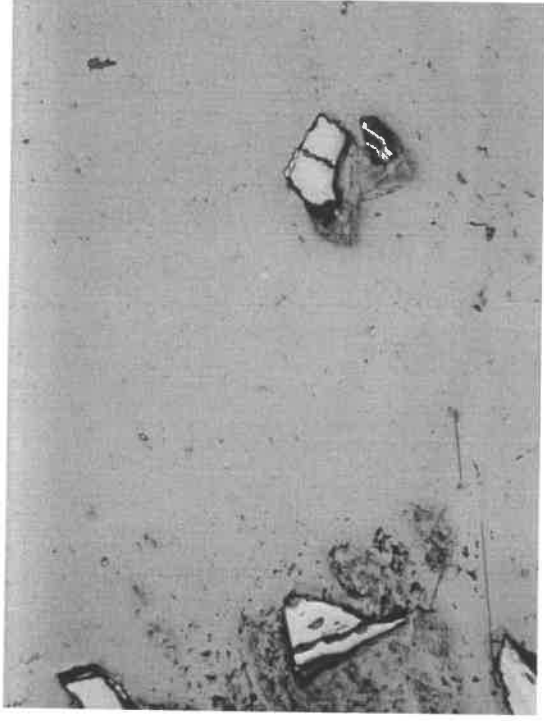
DSCN9441.JPG
1160x870, 32bit, 1.0MB



DSCN9442.JPG
1160x870, 32bit, 1.0MB



DSCN9443.JPG
1160x870, 32bit, 1.0MB



DSCN9444.JPG
1160x870, 32bit, 1000.5KB

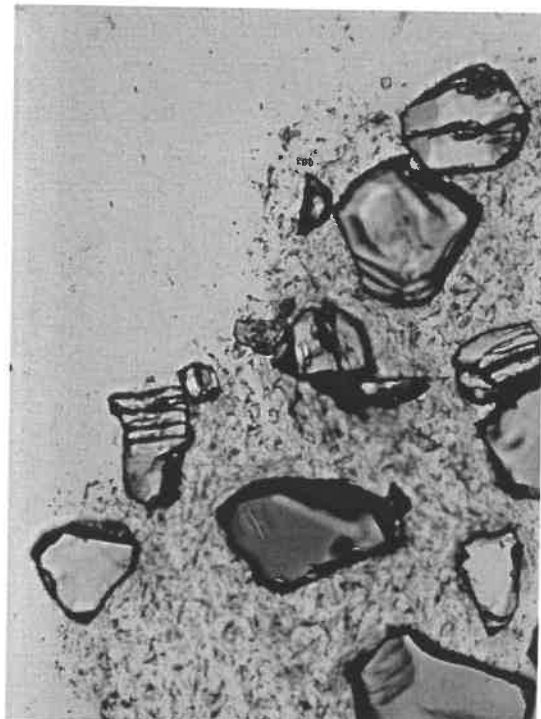
04-84 STANDARDS NORMAL



DSCN9445.JPG
1160x870, 32bit, 1.0MB



DSCN9446.JPG
1160x870, 32bit, 1.0MB

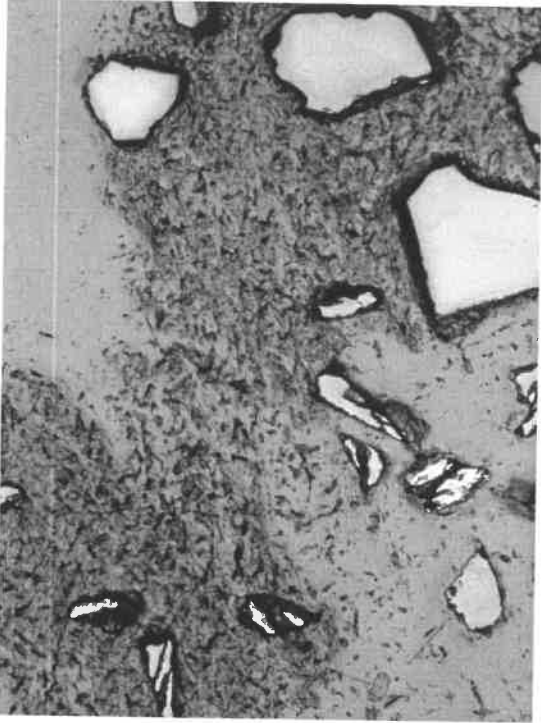


DSCN9447.JPG
1160x870, 32bit, 973.4KB



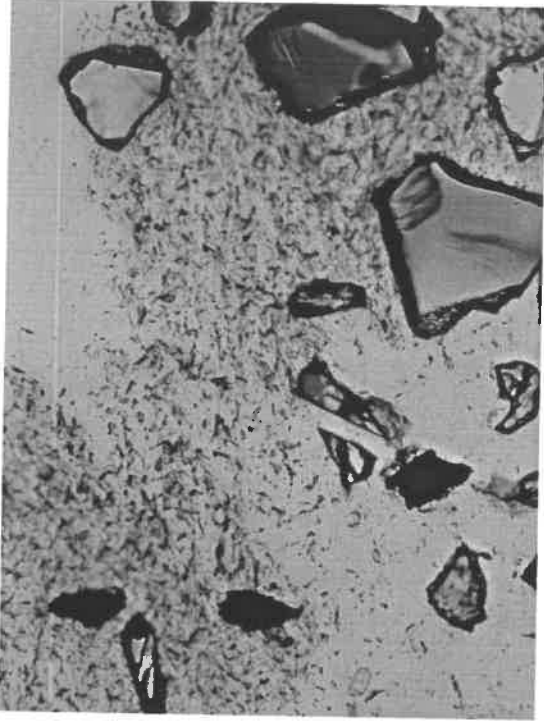
DSCN9448.JPG
1160x870, 32bit, 1.0MB

04-84 STANDARDS NORMAL



DSCN9449.JPG

1160x870, 32bit, 962.3KB



DSCN9450.JPG

1160x870, 32bit, 1005.8KB



DSCN9451.JPG

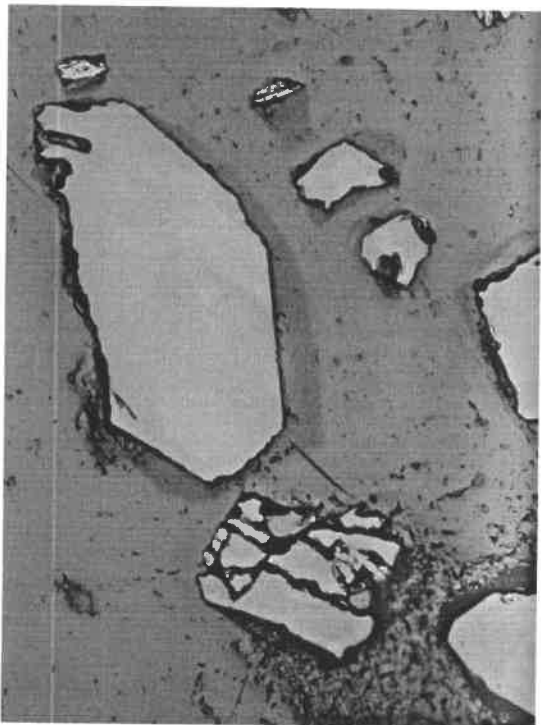
1160x870, 32bit, 1.0MB



DSCN9452.JPG

1160x870, 32bit, 1.0MB

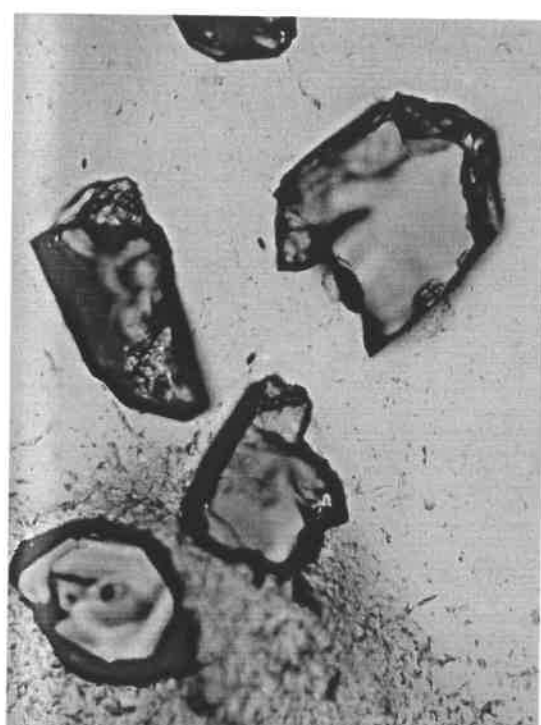
04-84 STANDARDS NORMAL



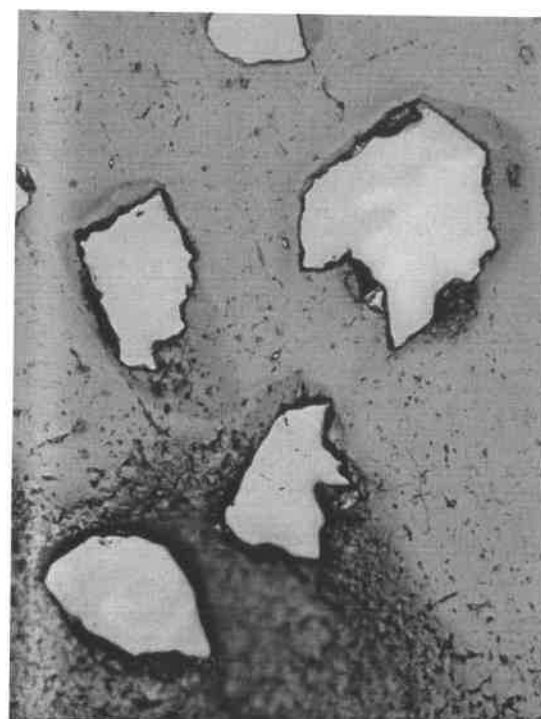
DSCN9453.JPG
1160x870, 32bit, 1007.8KB



DSCN9454.JPG
1160x870, 32bit, 937.4KB

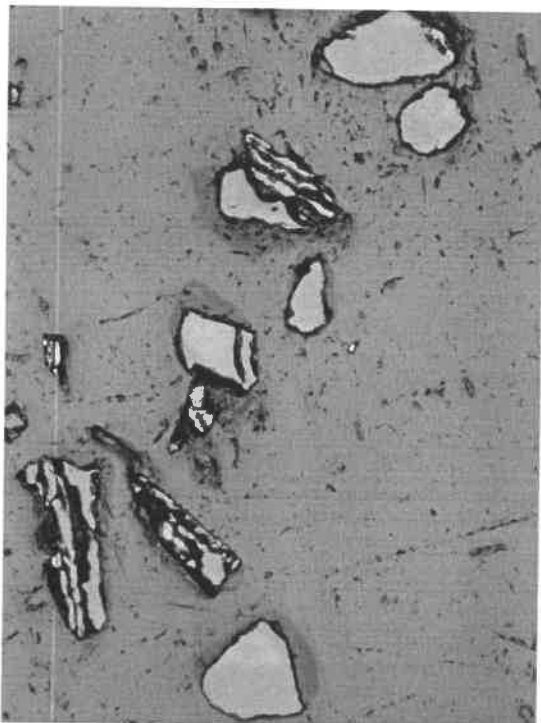


DSCN9455.JPG
1160x870, 32bit, 971.1KB

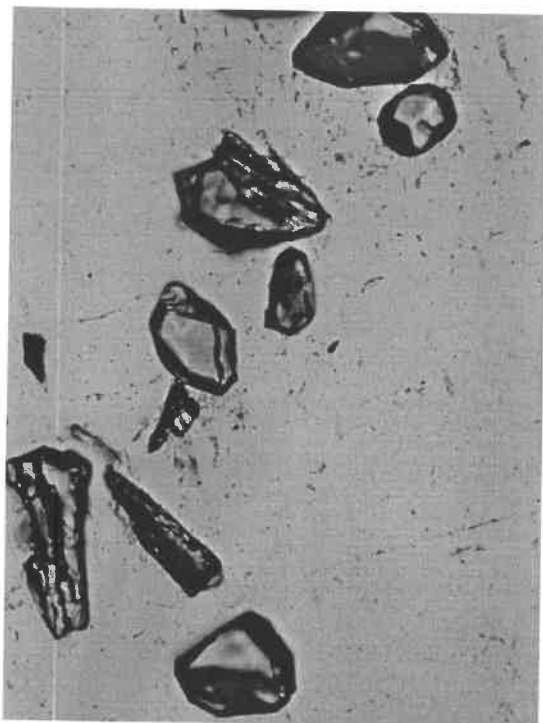


DSCN9456.JPG
1160x870, 32bit, 1.0MB

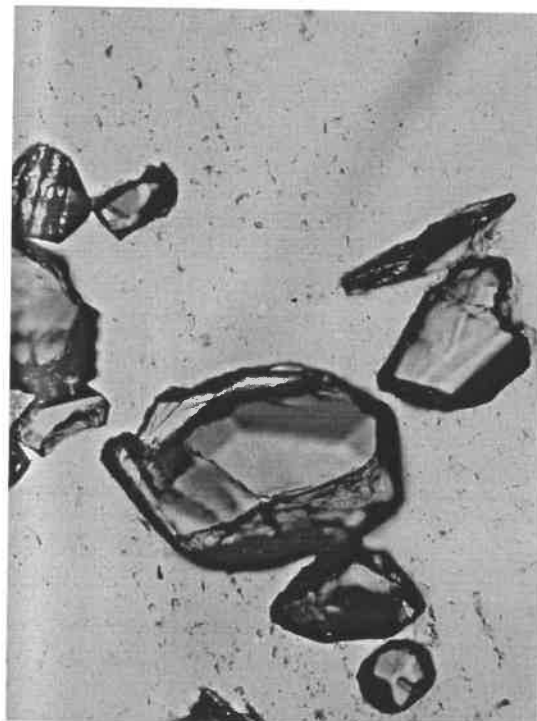
04-84 STANDARDS NORMAL



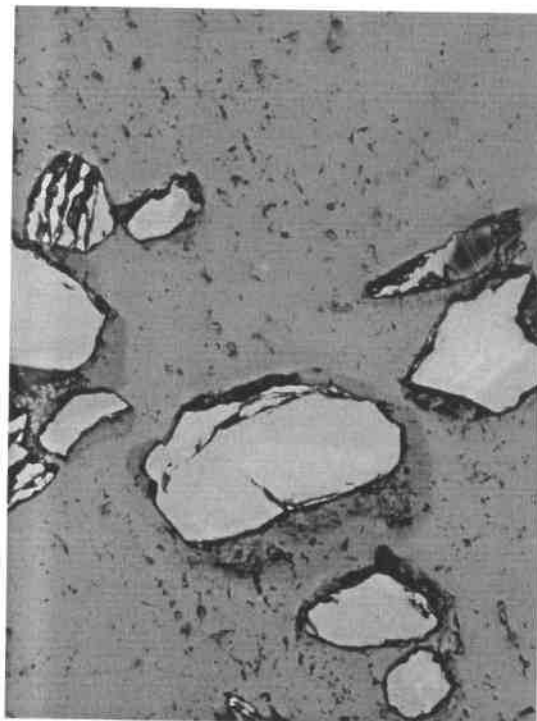
DSCN9457.JPG
1160x870, 32bit, 1.1MB



DSCN9458.JPG
1160x870, 32bit, 1.0MB

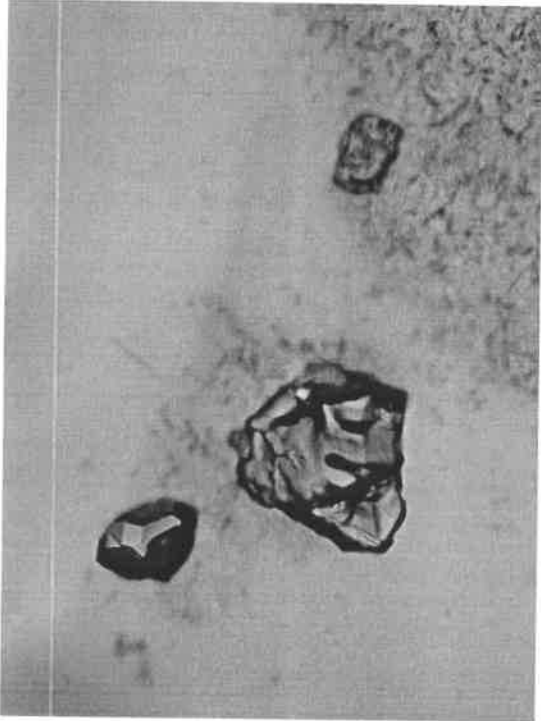


DSCN9459.JPG
1160x870, 32bit, 1.1MB

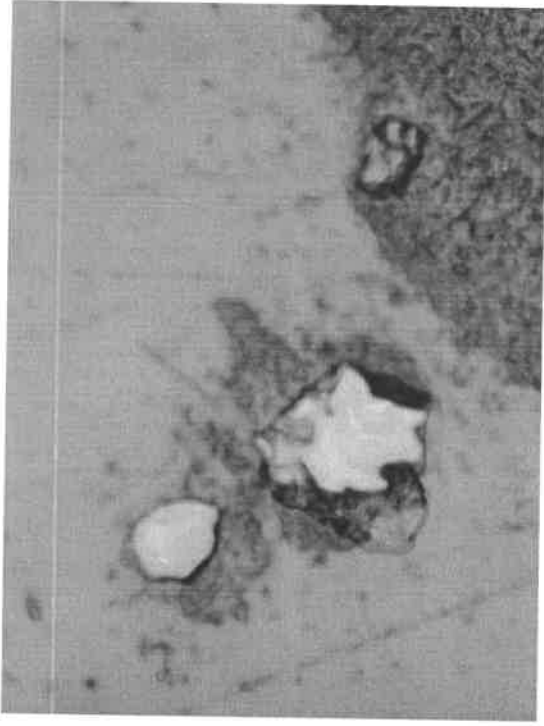


DSCN9460.JPG
1160x870, 32bit, 1.0MB

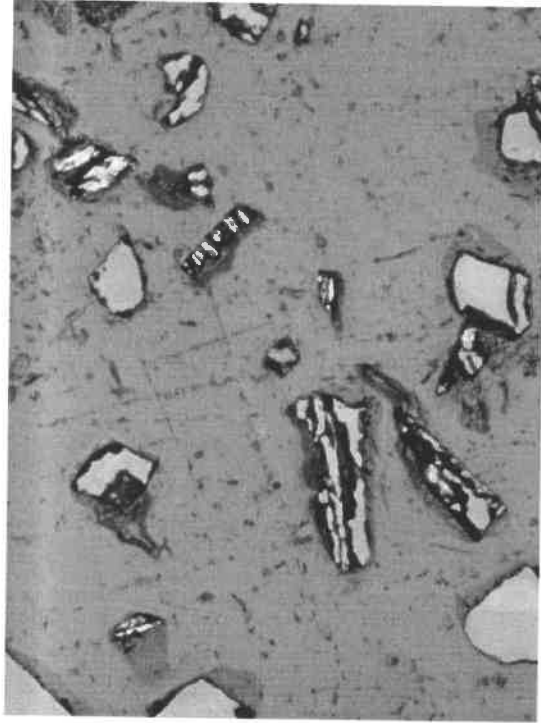
04-84 STANDARDS NORMAL



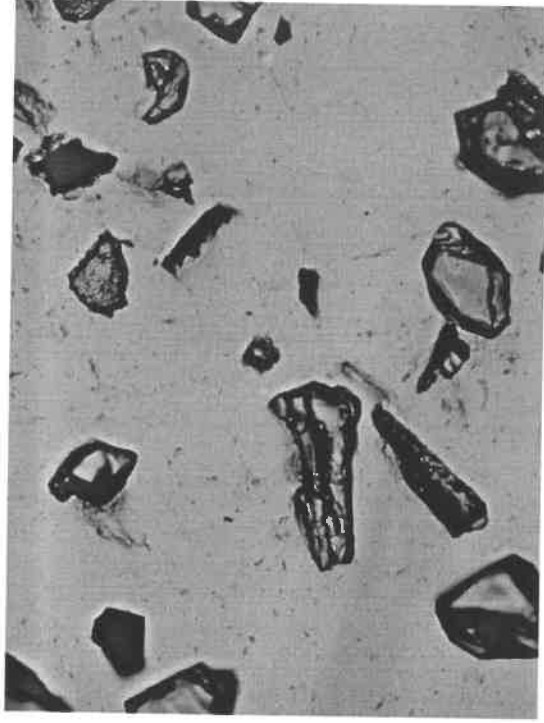
DSCN9468.JPG
1160x870, 32bit, 1.1MB



DSCN9469.JPG
1160x870, 32bit, 1.0MB

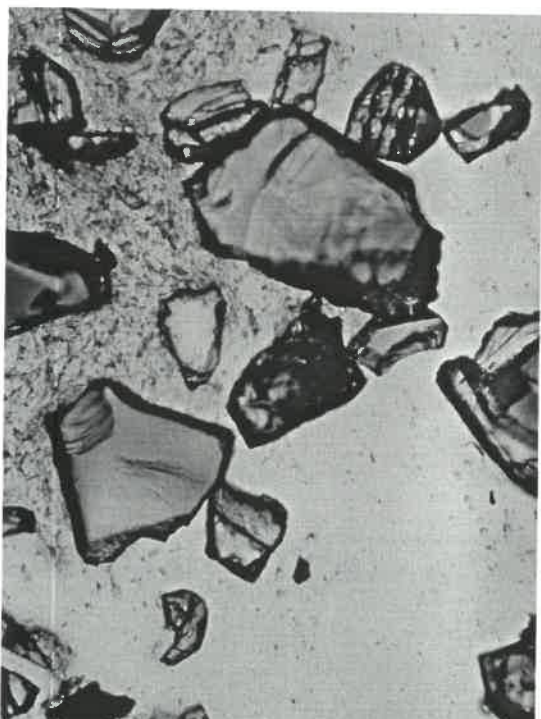


DSCN9470.JPG
1160x870, 32bit, 1.0MB

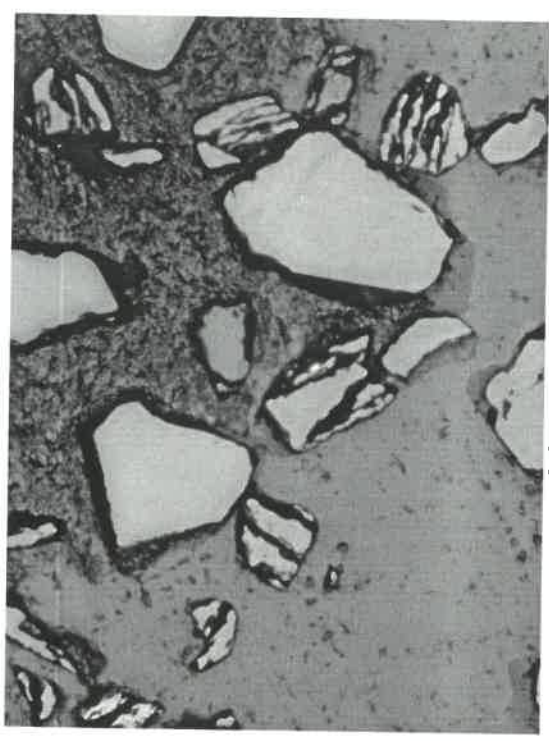


DSCN9471.JPG
1160x870, 32bit, 1.0MB

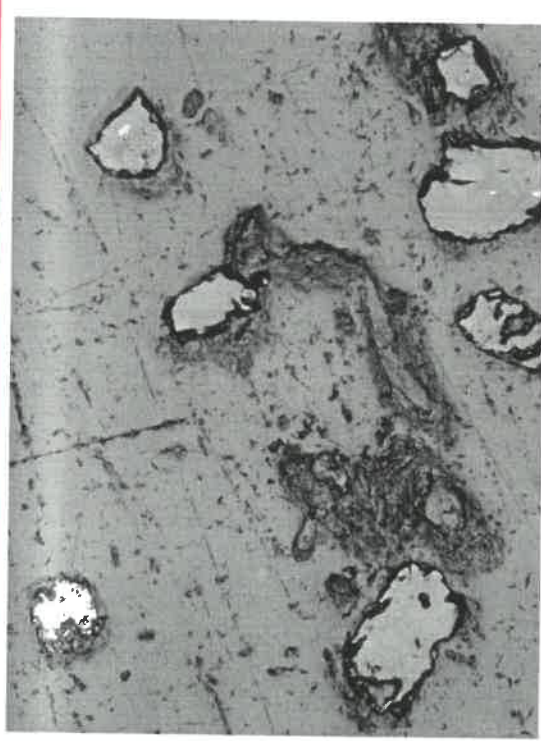
04-84 STANDARDS NORMAL



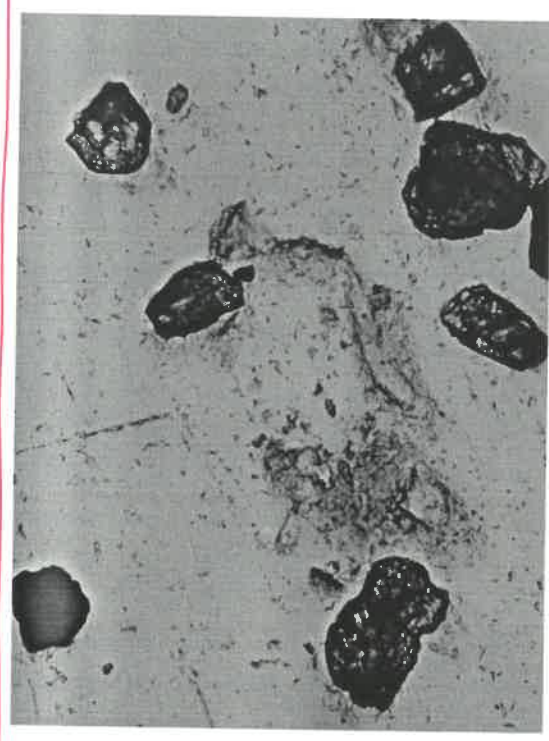
DSCN9472.JPG
1160x870, 32bit, 946.2KB



DSCN9473.JPG
1160x870, 32bit, 994.2KB

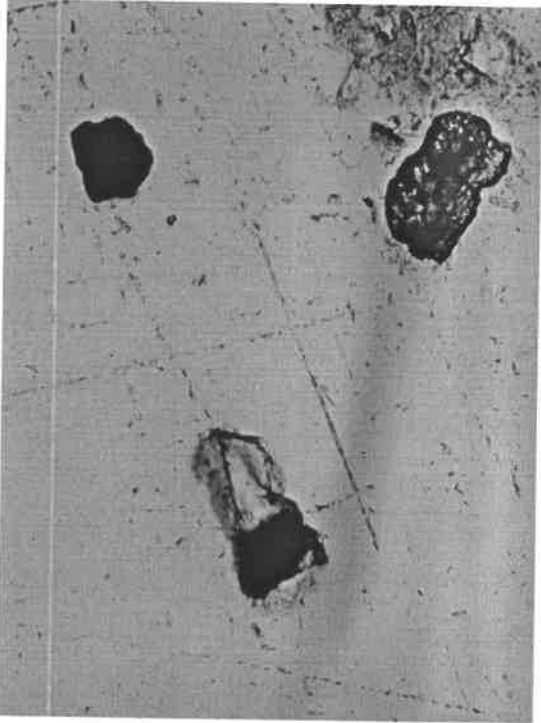


DSCN9474.JPG
1160x870, 32bit, 1.0MB

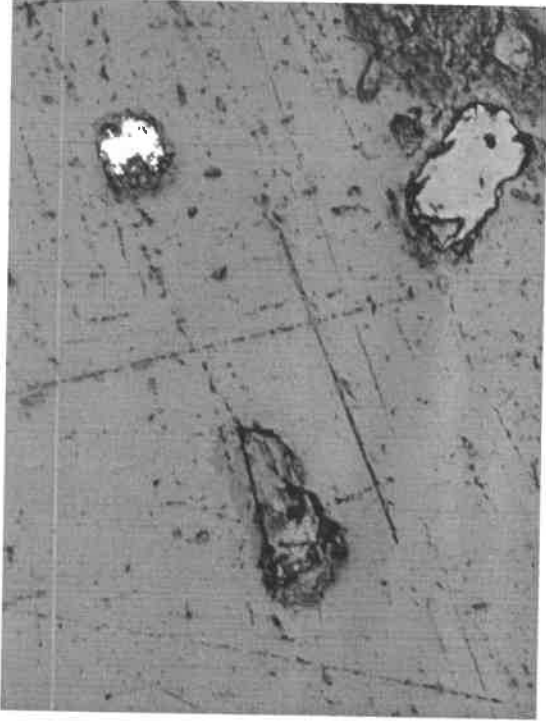


DSCN9475.JPG
1160x870, 32bit, 981.7KB

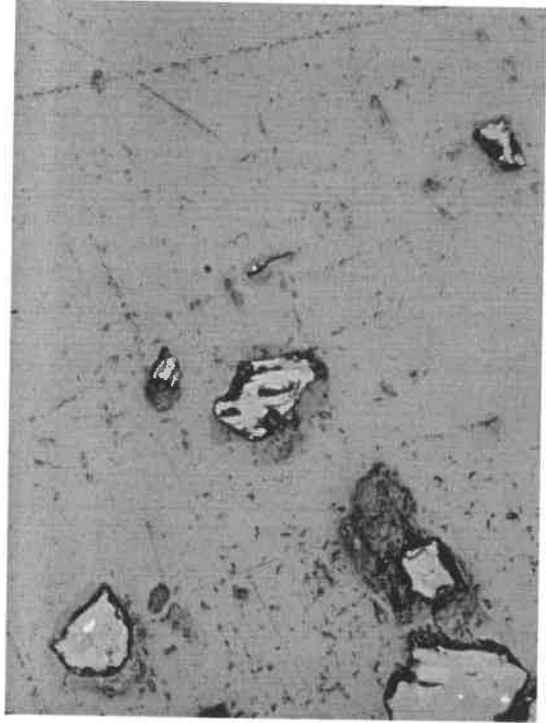
04-84 STANDARDS NORMAL



DSCN9476.JPG
1160x870, 32bit, 1.0MB



DSCN9477.JPG
1160x870, 32bit, 1011.2KB



DSCN9478.JPG
1160x870, 32bit, 1.0MB

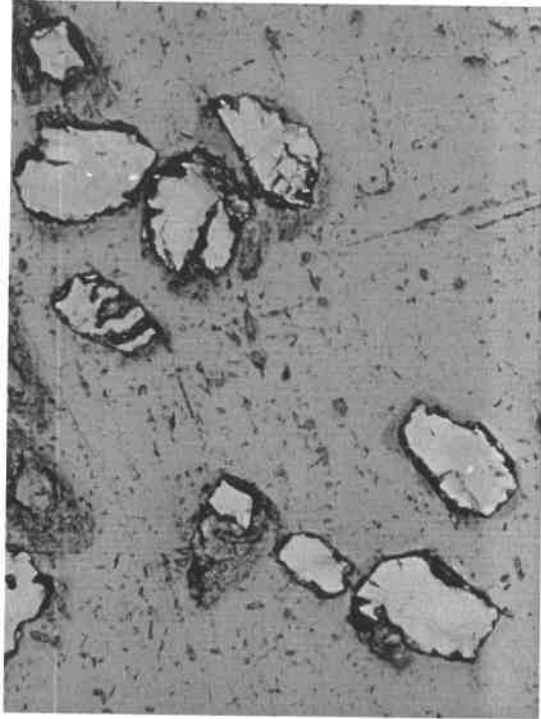


DSCN9479.JPG
1160x870, 32bit, 1.1MB

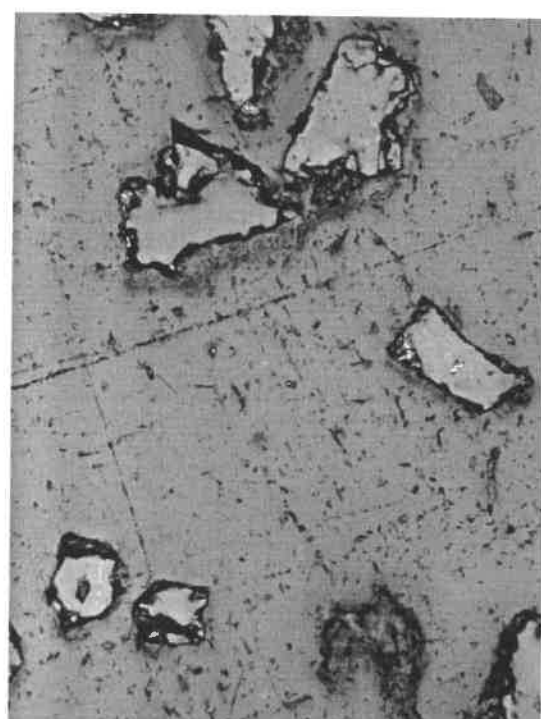
04-84 STANDARDS NORMAL



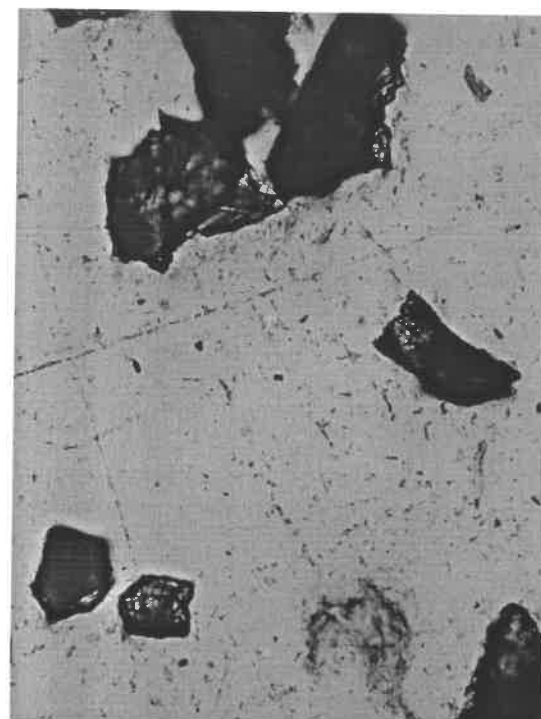
DSCN9480.JPG
1160x870, 32bit, 1.1MB



DSCN9481.JPG
1160x870, 32bit, 984.2KB

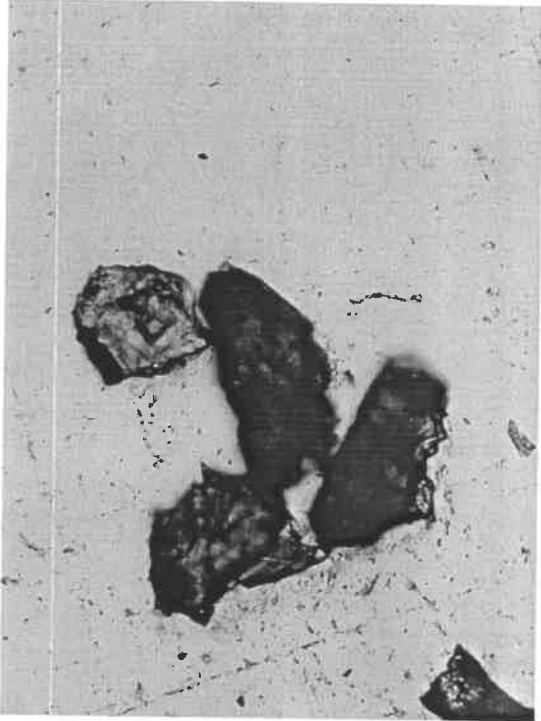


DSCN9482.JPG
1160x870, 32bit, 989.1KB

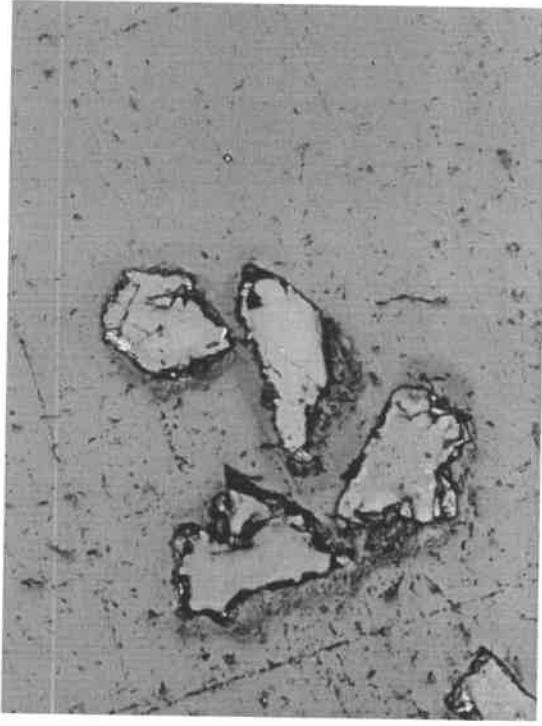


DSCN9483.JPG
1160x870, 32bit, 1.0MB

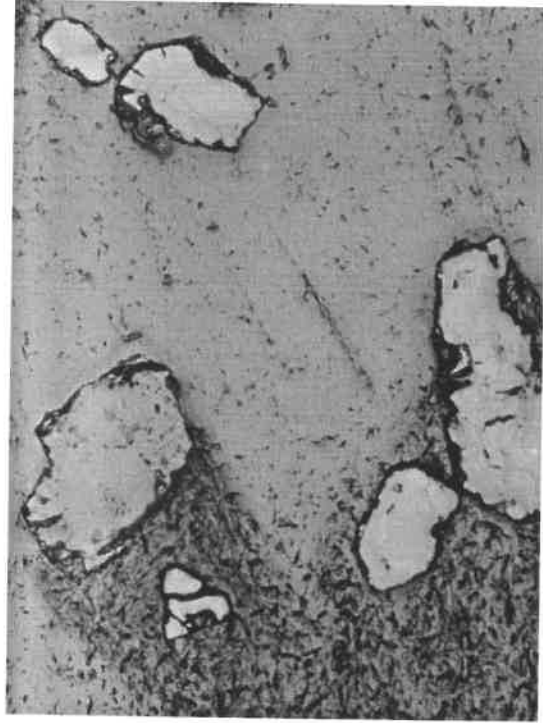
04-84 STANDARDS NORMAL



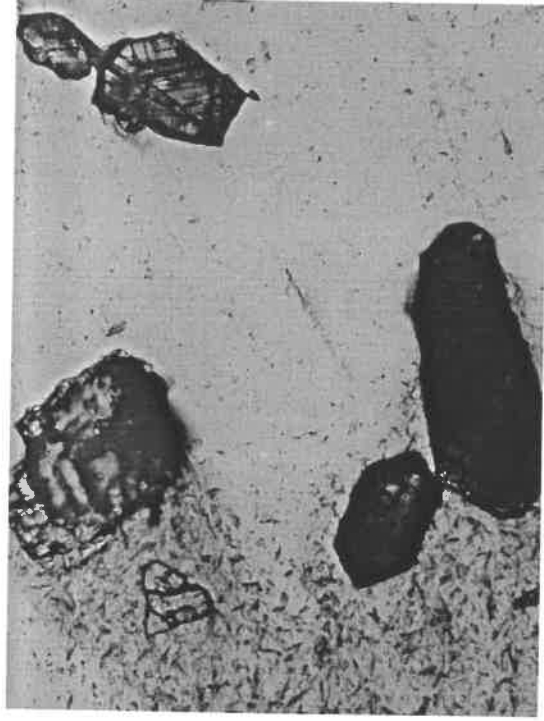
DSCN9484.JPG
1160x870, 32bit, 1.1MB



DSCN9485.JPG
1160x870, 32bit, 1.1MB

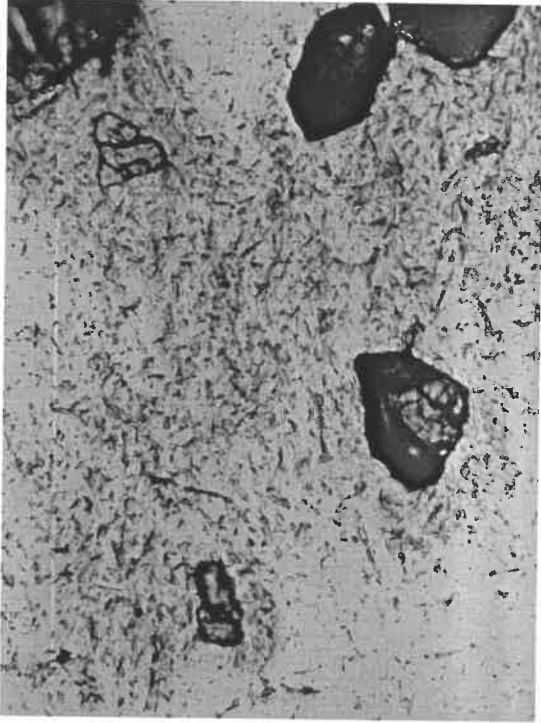


DSCN9486.JPG
1160x870, 32bit, 1.0MB



DSCN9487.JPG
1160x870, 32bit, 1.0MB

04-84 STANDARDS NORMAL



DSCN9488.JPG

1160x870, 32bit, 968.8KB



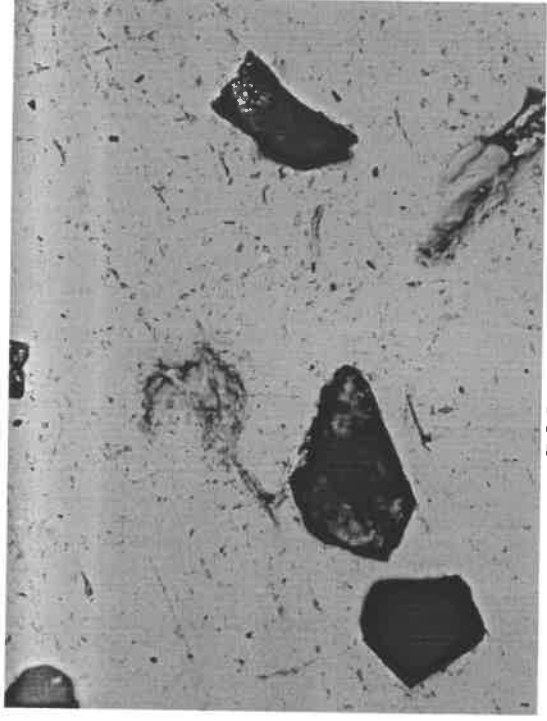
DSCN9489.JPG

1160x870, 32bit, 996.4KB



DSCN9490.JPG

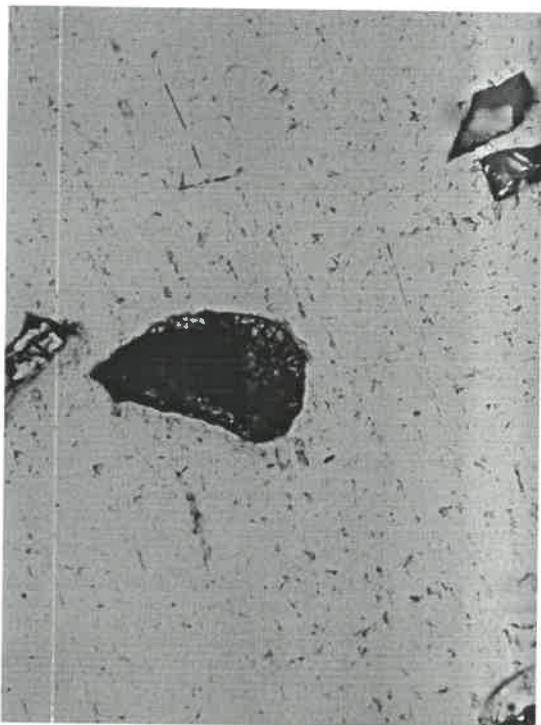
1160x870, 32bit, 994.9KB



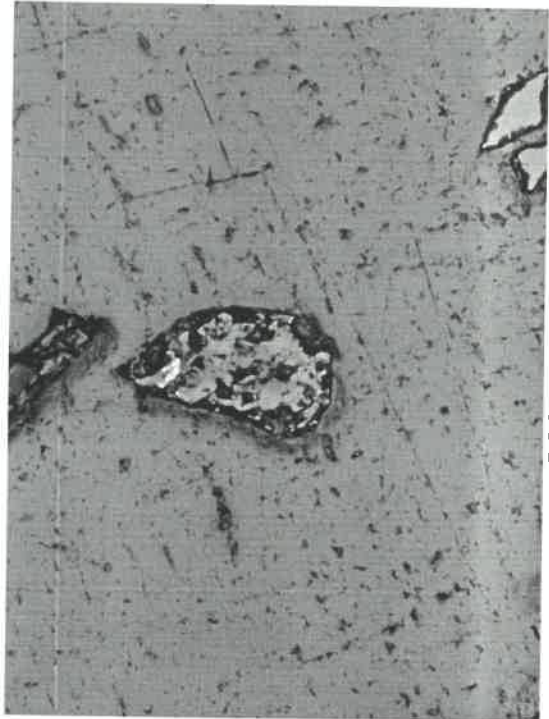
DSCN9491.JPG

1160x870, 32bit, 1.1MB

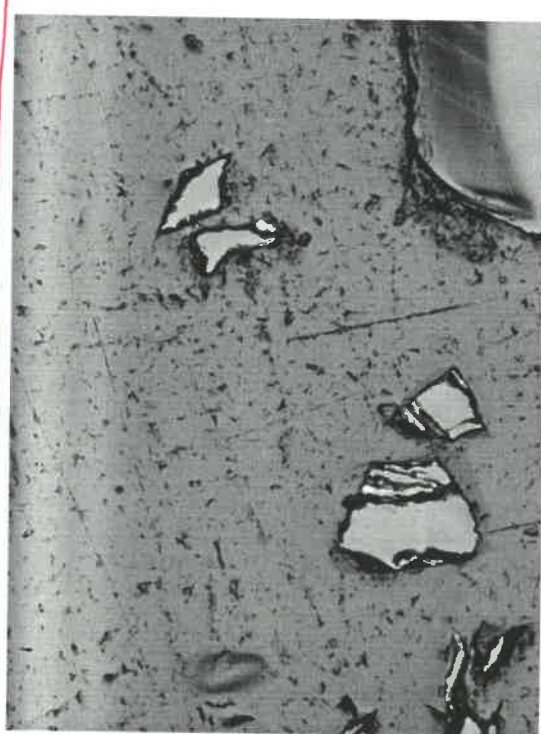
04-84 STANDARDS NORMAL



DSCN9492.JPG
1160x870, 32bit, 1.1MB



DSCN9493.JPG
1160x870, 32bit, 981.0KB



DSCN9494.JPG
1160x870, 32bit, 977.4KB



DSCN9495.JPG
1160x870, 32bit, 1.0MB

04-84 STANDARDS NORMAL



DSCN9496.JPG
1160x870, 32bit, 1.0MB



DSCN9497.JPG
1160x870, 32bit, 1010.9KB

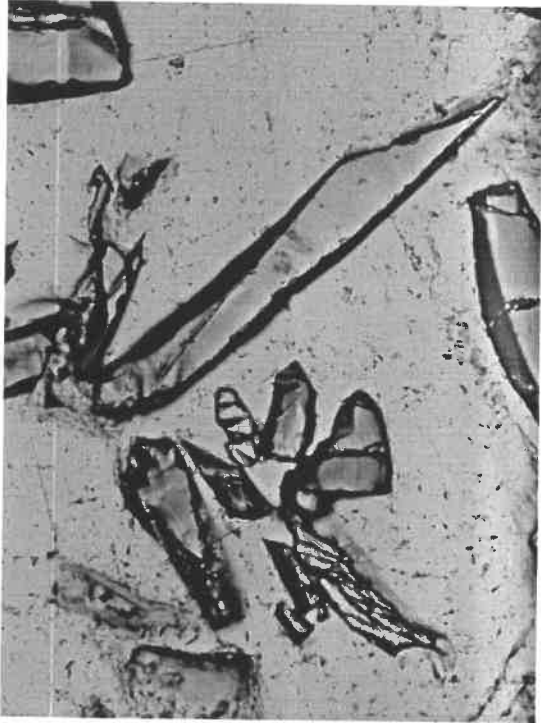


DSCN9498.JPG
1160x870, 32bit, 931.6KB



DSCN9499.JPG
1160x870, 32bit, 1.0MB

04-84 STANDARDS NORMAL



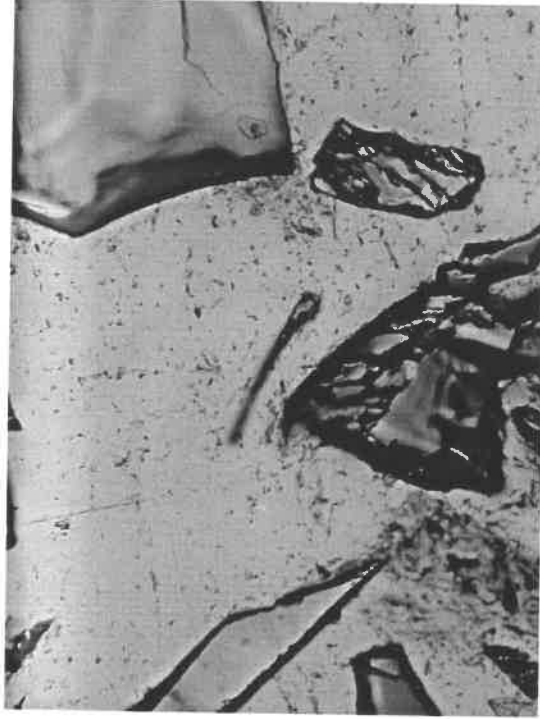
DSCN9500.JPG
1160x870, 32bit, 938.5KB



DSCN9501.JPG
1160x870, 32bit, 1.0MB

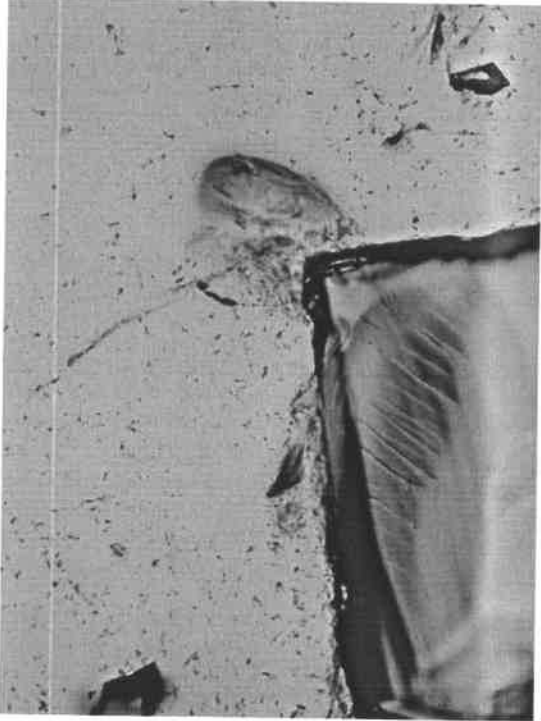


DSCN9502.JPG
1160x870, 32bit, 1005.8KB



DSCN9503.JPG
1160x870, 32bit, 976.0KB

04-84 STANDARDS NORMAL



DSCN9504.JPG
1160x870, 32bit, 1.0MB



DSCN9505.JPG
1160x870, 32bit, 1.1MB

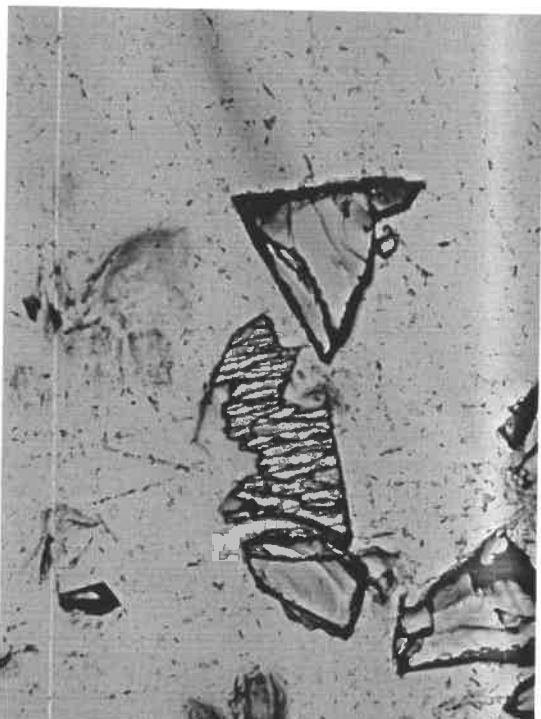


DSCN9506.JPG
1160x870, 32bit, 961.7KB

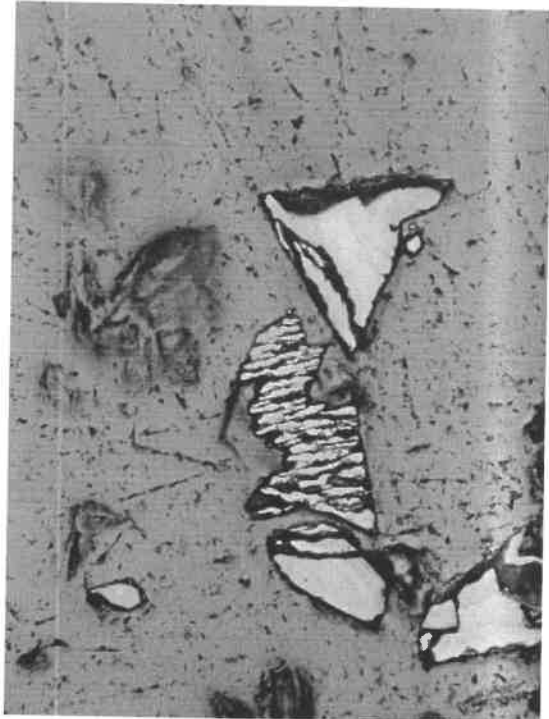


DSCN9507.JPG
1160x870, 32bit, 988.3KB

04-84 STANDARDS NORMAL



DSCN9508.JPG
1160x870, 32bit, 1.0MB



DSCN9509.JPG
1160x870, 32bit, 992.0KB



DSCN9510.JPG
1160x870, 32bit, 980.8KB



DSCN9511.JPG
1160x870, 32bit, 955.3KB

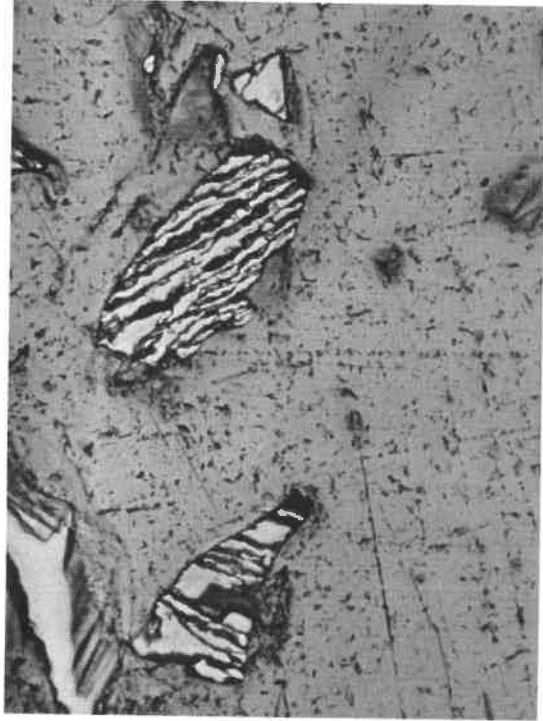
04-84 STANDARDS NORMAL



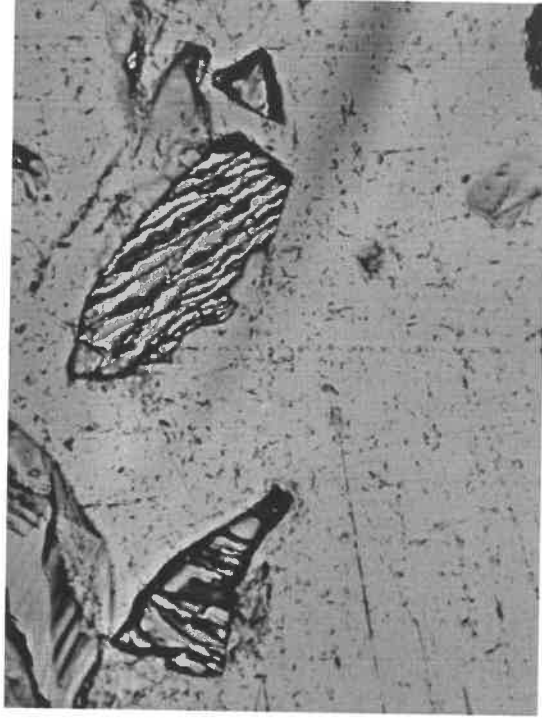
DSCN9512.JPG
1160x870, 32bit, 1.1MB



DSCN9513.JPG
1160x870, 32bit, 982.4KB

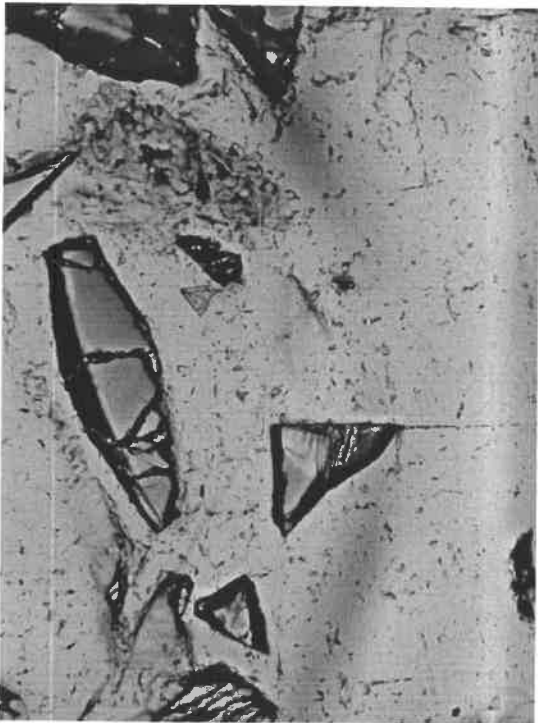


DSCN9514.JPG
1160x870, 32bit, 945.9KB



DSCN9515.JPG
1160x870, 32bit, 995.5KB

04-84 STANDARDS NORMAL



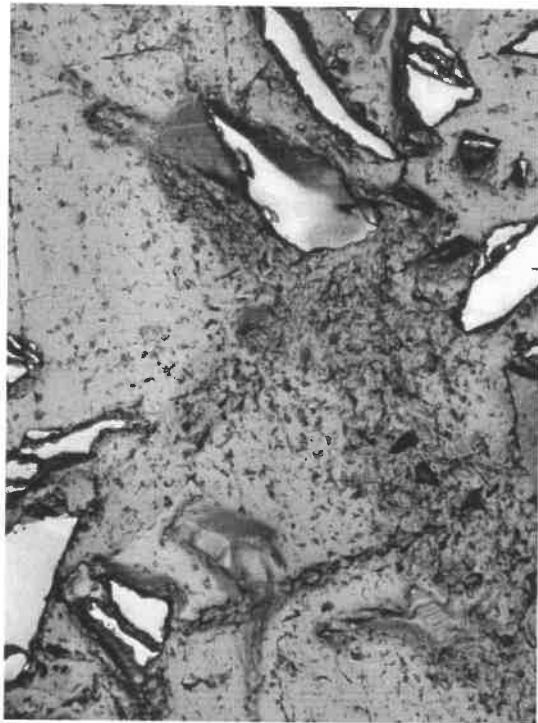
DSCN9516.JPG

1160x870, 32bit, 937.9KB



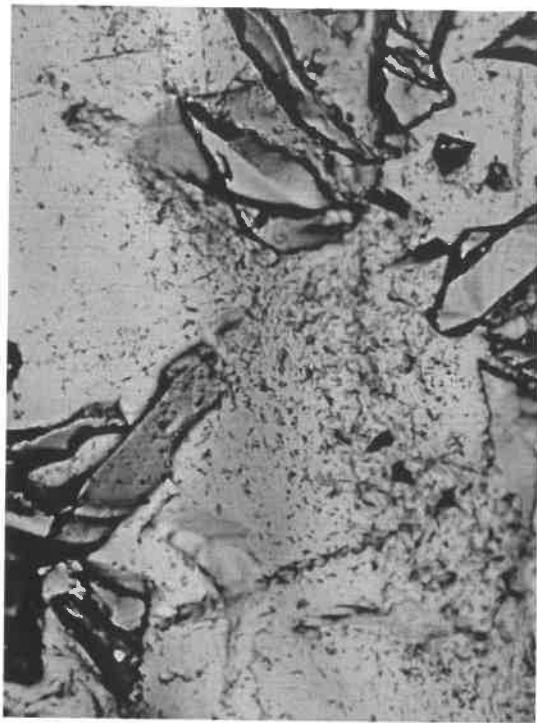
DSCN9517.JPG

1160x870, 32bit, 933.1KB



DSCN9518.JPG

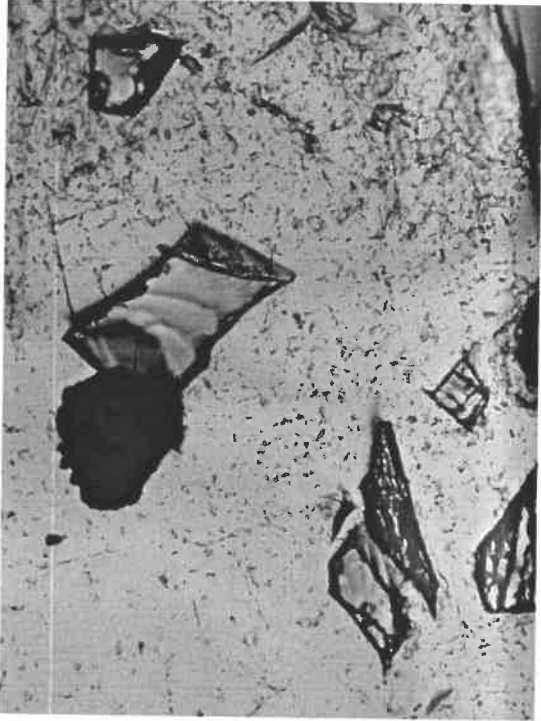
1160x870, 32bit, 1011.5KB



DSCN9519.JPG

1160x870, 32bit, 978.5KB

04-84 STANDARDS NORMAL



DSCN9520.JPG
1160x870, 32bit, 1.0MB



DSCN9521.JPG
1160x870, 32bit, 898.5KB

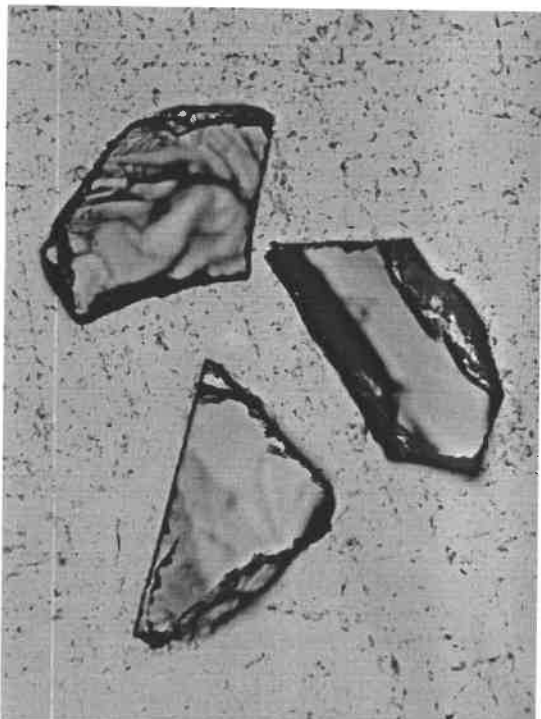


DSCN9522.JPG
1160x870, 32bit, 969.5KB

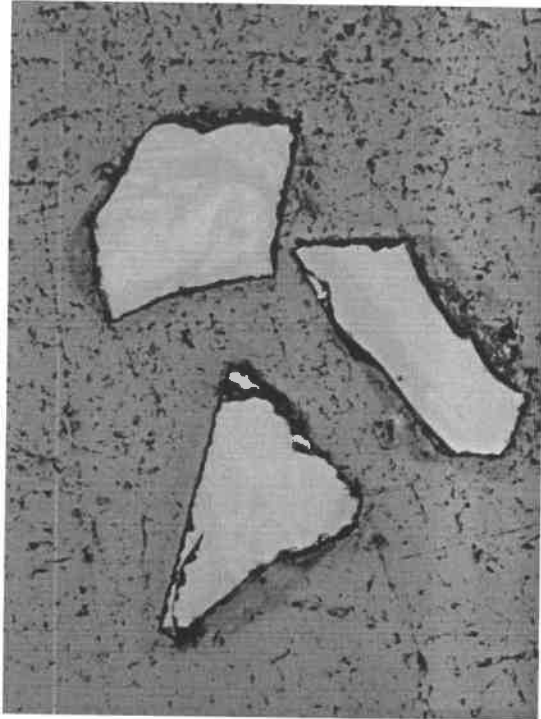


DSCN9523.JPG
1160x870, 32bit, 1.0MB

04-84 STANDARDS NORMAL



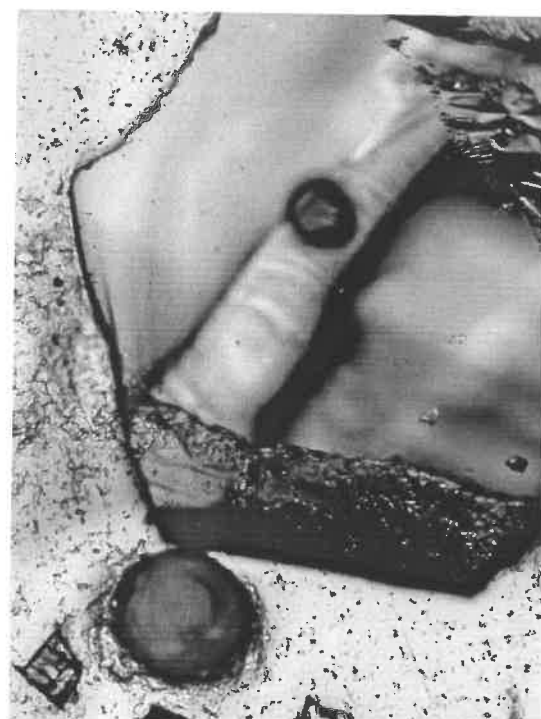
DSCN9524.JPG
1160x870, 32bit, 980.0KB



DSCN9525.JPG
1160x870, 32bit, 948.9KB

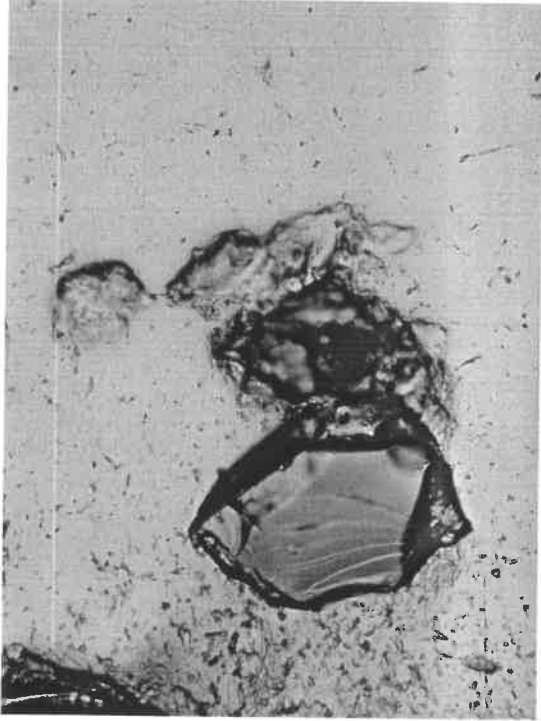


DSCN9526.JPG
1160x870, 32bit, 947.4KB

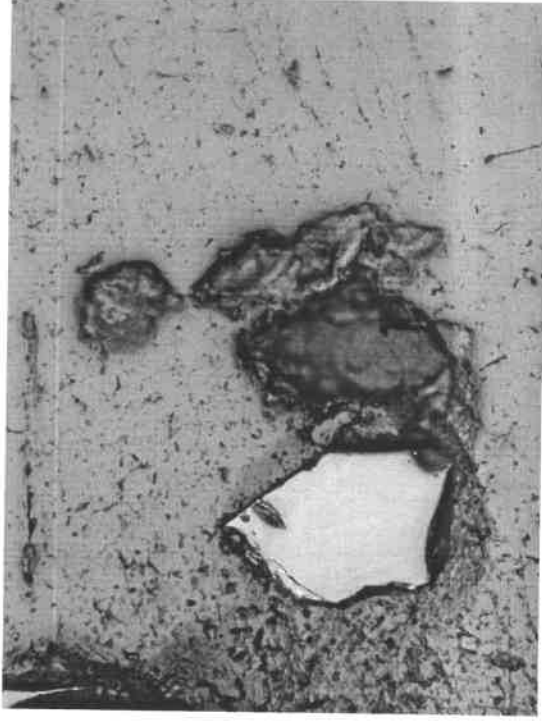


DSCN9527.JPG
1160x870, 32bit, 1.0MB

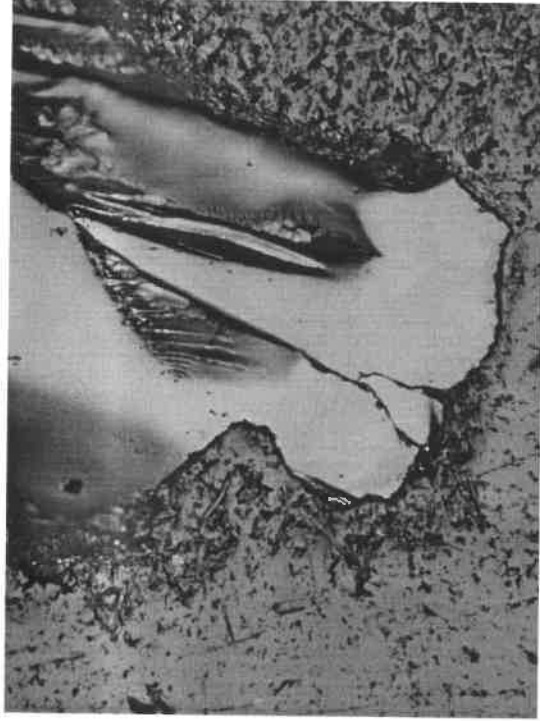
04-84 STANDARDS NORMAL



DSCN9528.JPG
1160x870, 32bit, 1.0MB



DSCN9529.JPG
1160x870, 32bit, 1.0MB

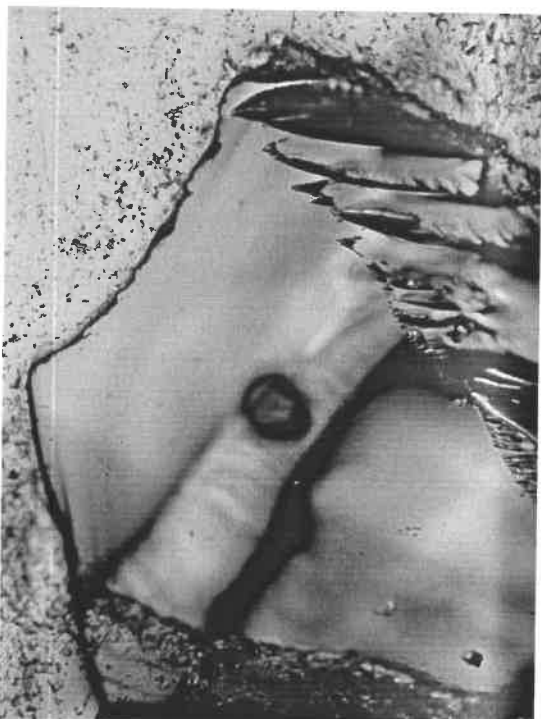


DSCN9530.JPG
1160x870, 32bit, 975.6KB



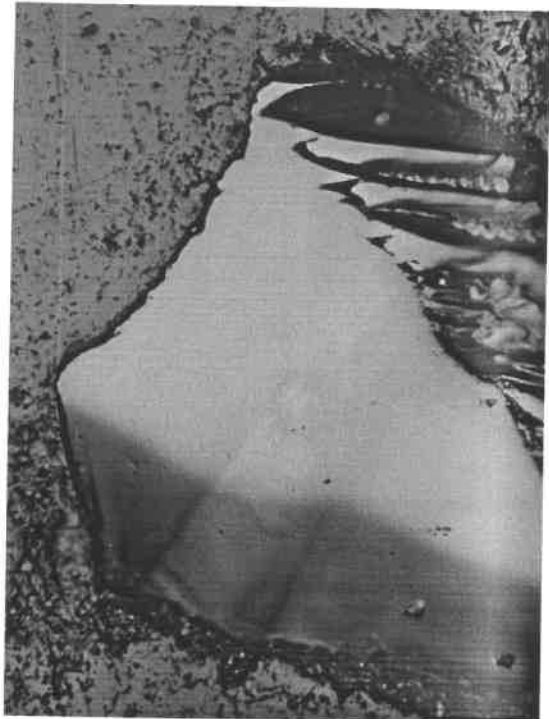
DSCN9531.JPG
1160x870, 32bit, 983.5KB

04-84 STANDARDS NORMAL



DSCN9532.JPG

1160x870, 32bit, 954.2KB

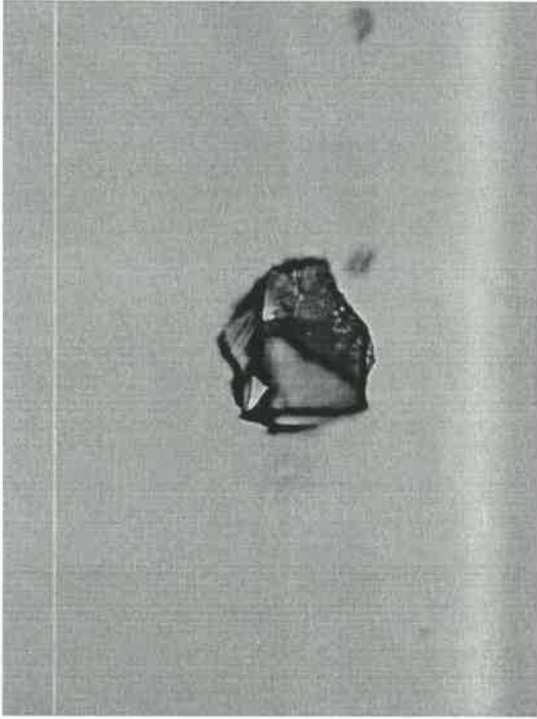


DSCN9533.JPG

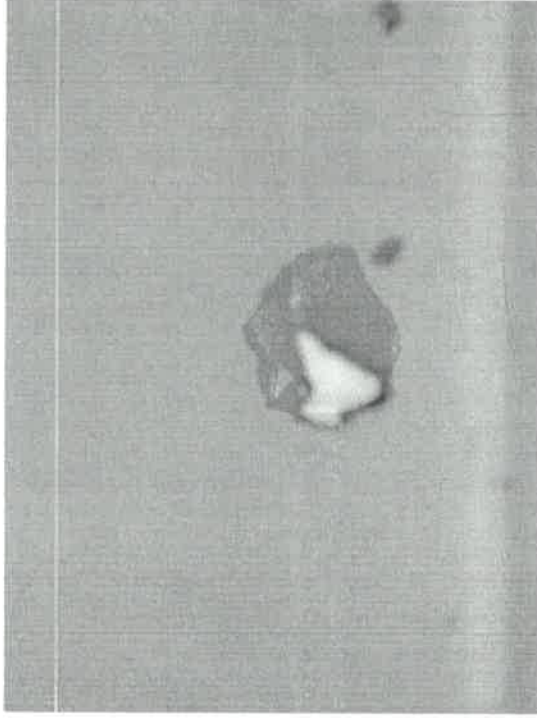
1160x870, 32bit, 1012.4KB

RL/TL

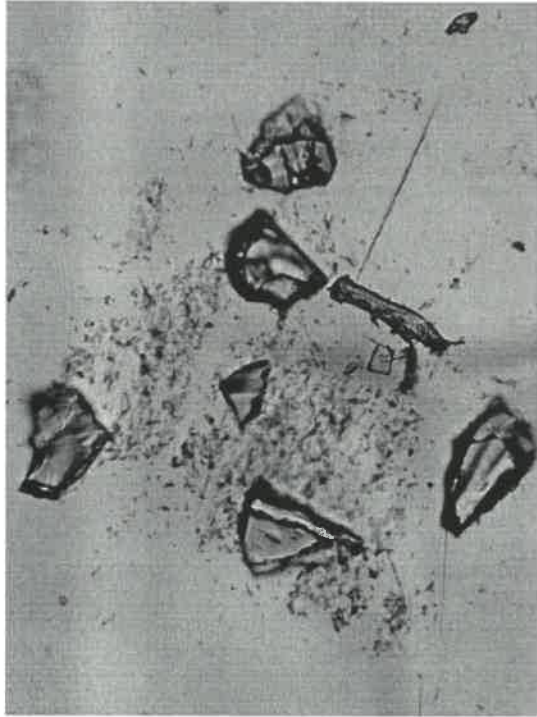
04-84 STANDARDS REVERSE



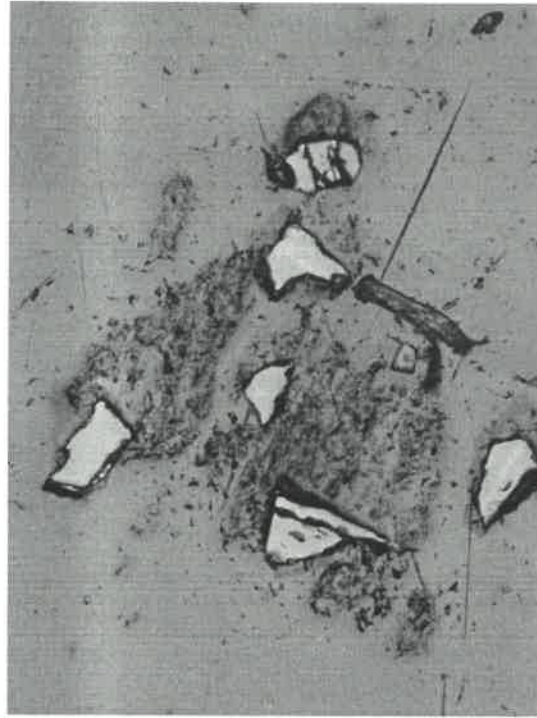
DSCN9437.JPG
1160x870, 32bit, 1.3MB



DSCN9438.JPG
1160x870, 32bit, 1.4MB

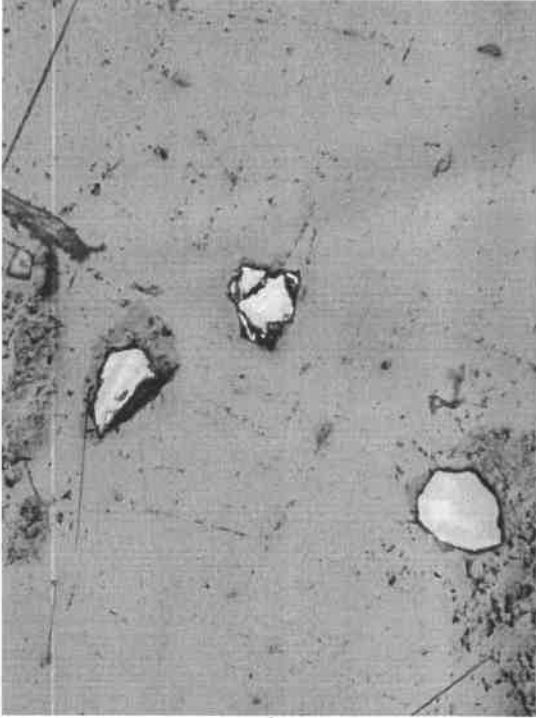


DSCN9439.JPG
1160x870, 32bit, 1.5MB

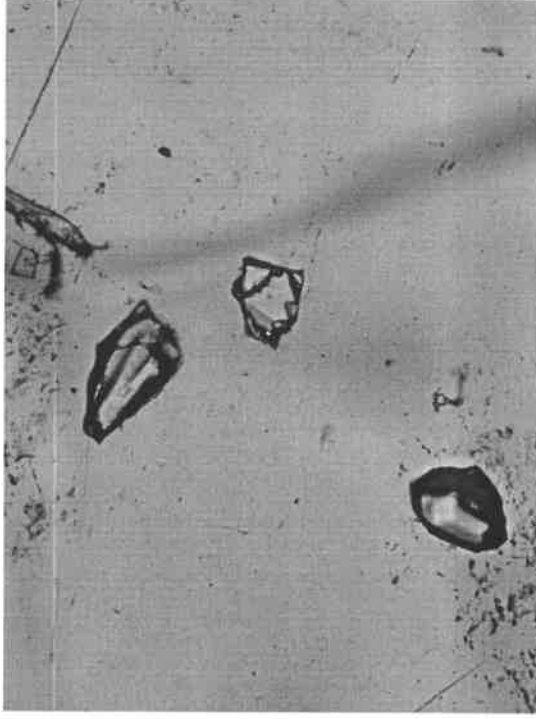


DSCN9440.JPG
1160x870, 32bit, 1.5MB

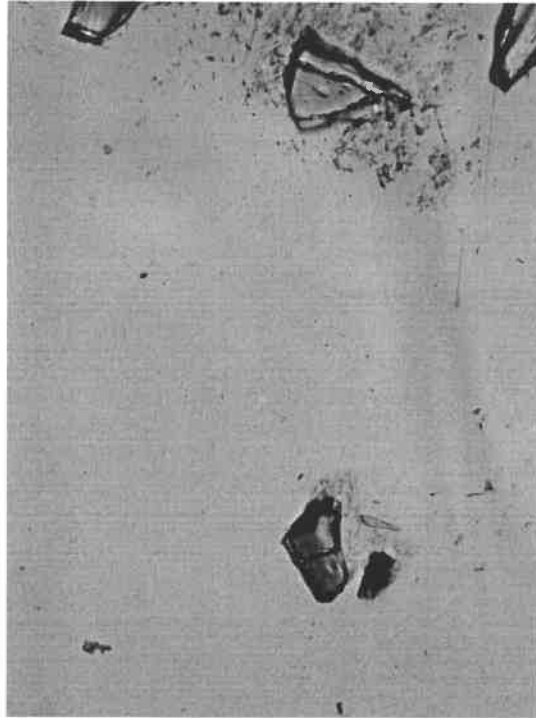
04-84 STANDARDS REVERSE



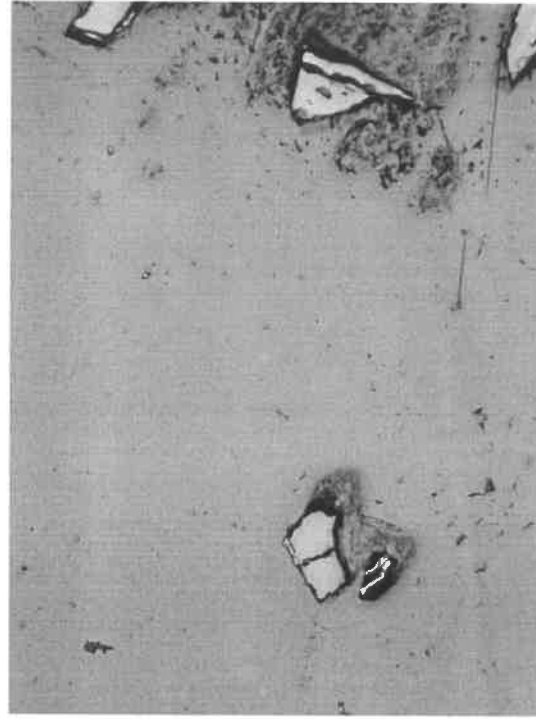
DSCN9441.JPG
1160x870, 32bit, 1.5MB



DSCN9442.JPG
1160x870, 32bit, 1.5MB

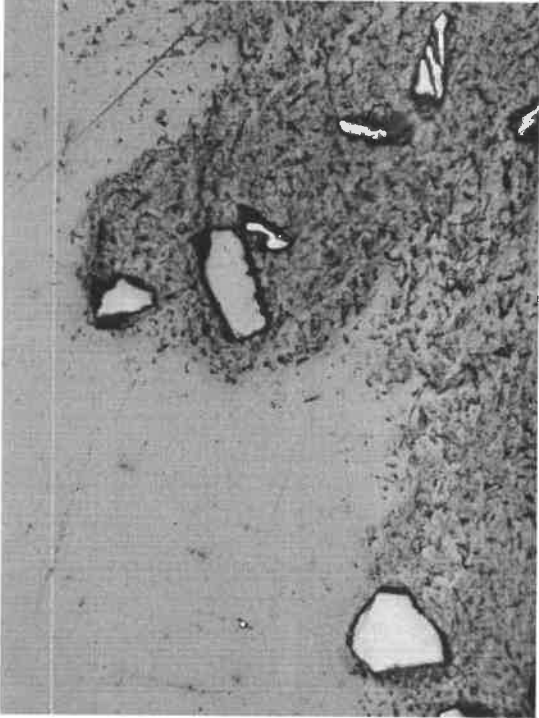


DSCN9443.JPG
1160x870, 32bit, 1.4MB

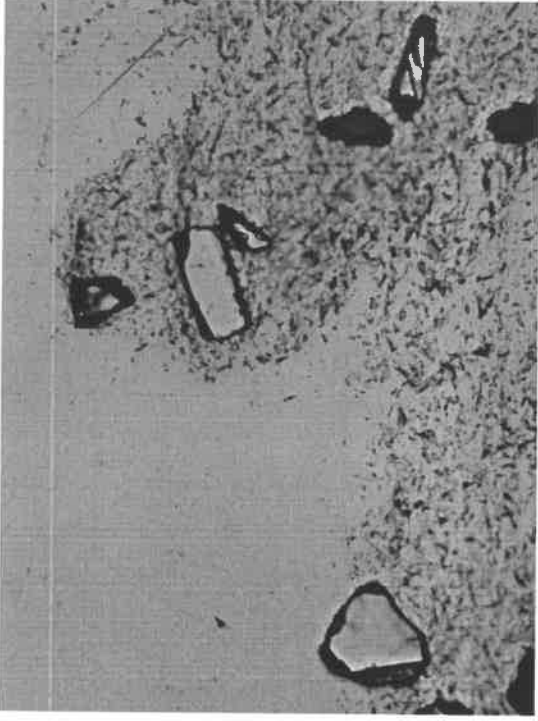


DSCN9444.JPG
1160x870, 32bit, 1.4MB

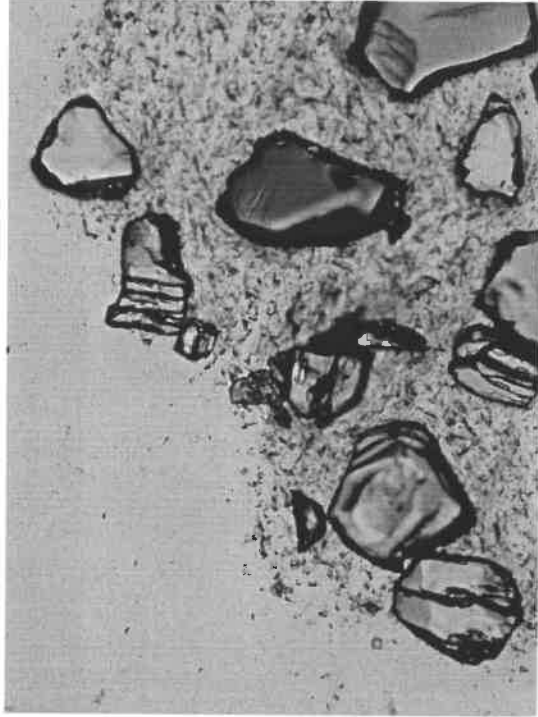
04-84 STANDARDS REVERSE



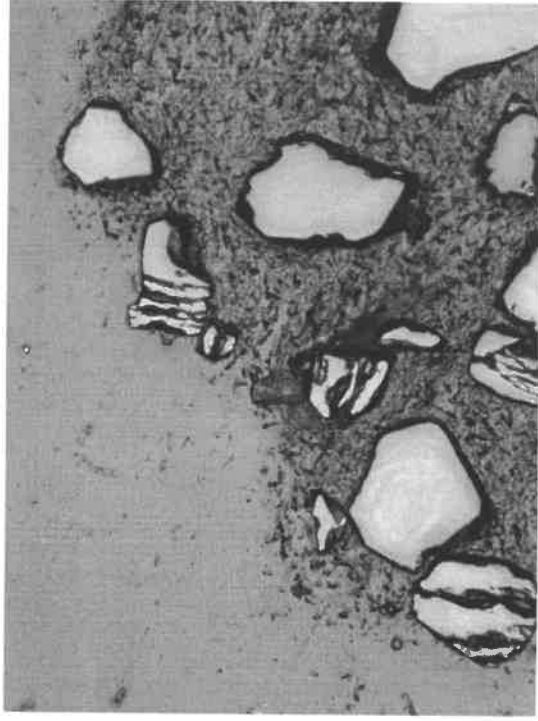
DSCN9445.JPG
1160x870, 32bit, 1.6MB



DSCN9446.JPG
1160x870, 32bit, 1.6MB



DSCN9447.JPG
1160x870, 32bit, 1.6MB

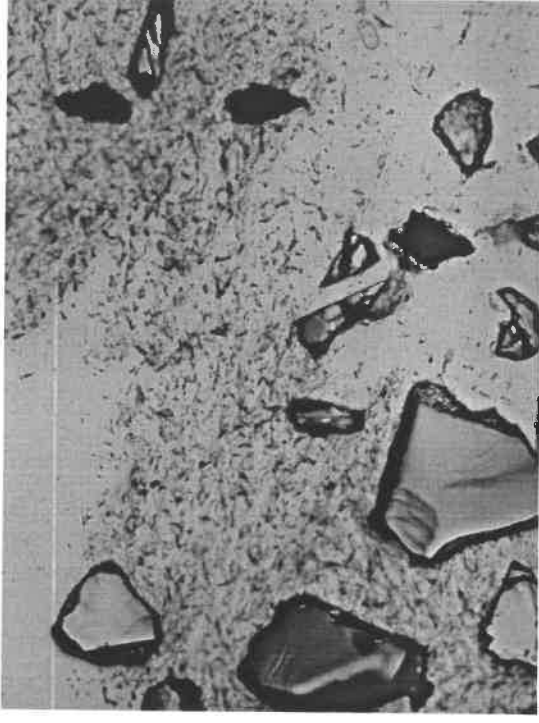


DSCN9448.JPG
1160x870, 32bit, 1.5MB

04-84 STANDARDS REVERSE



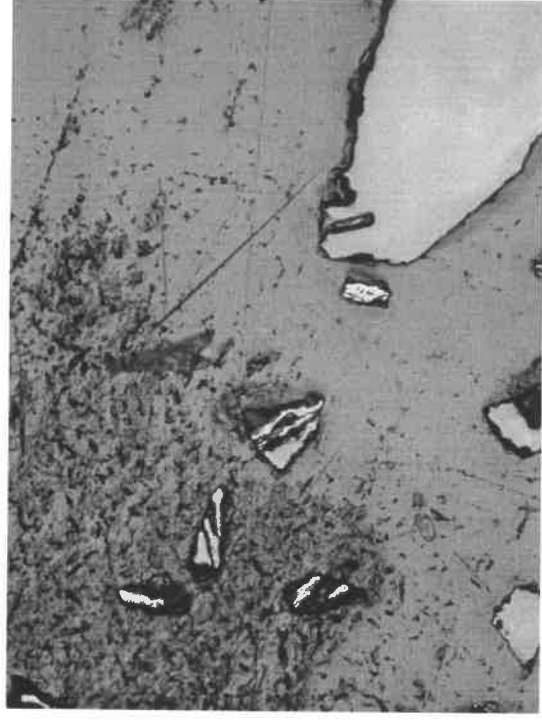
DSCN9449.JPG
1160x870, 32bit, 1.6MB



DSCN9450.JPG
1160x870, 32bit, 1.6MB

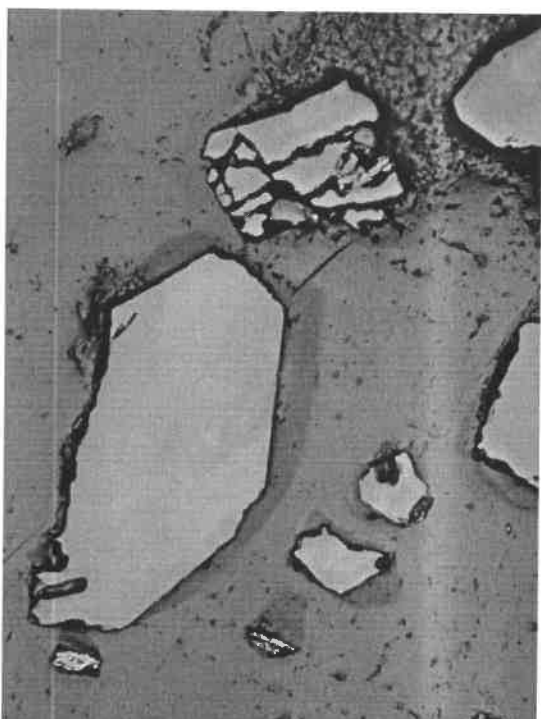


DSCN9451.JPG
1160x870, 32bit, 1.6MB

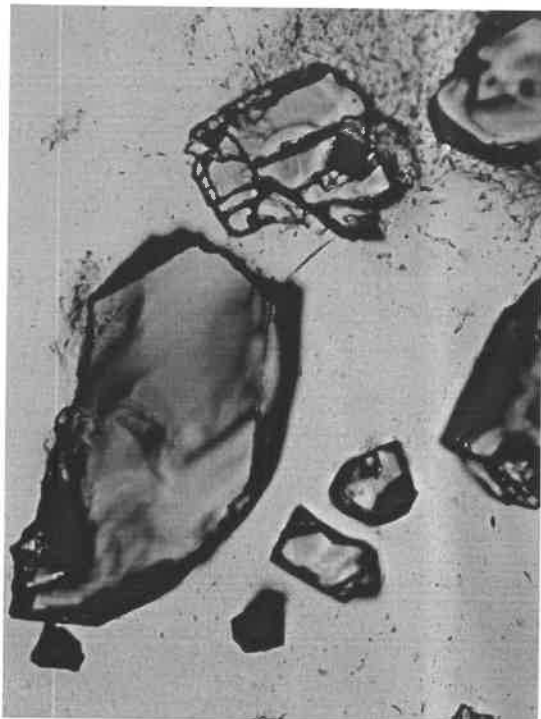


DSCN9452.JPG
1160x870, 32bit, 1.6MB

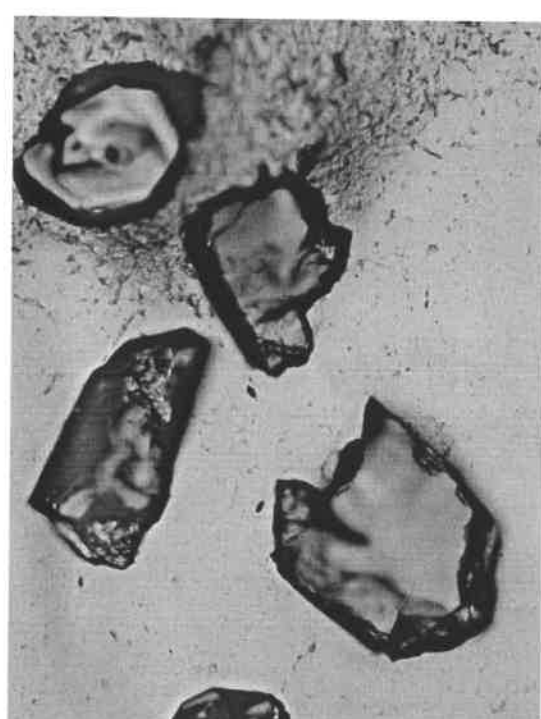
04-84 STANDARDS REVERSE



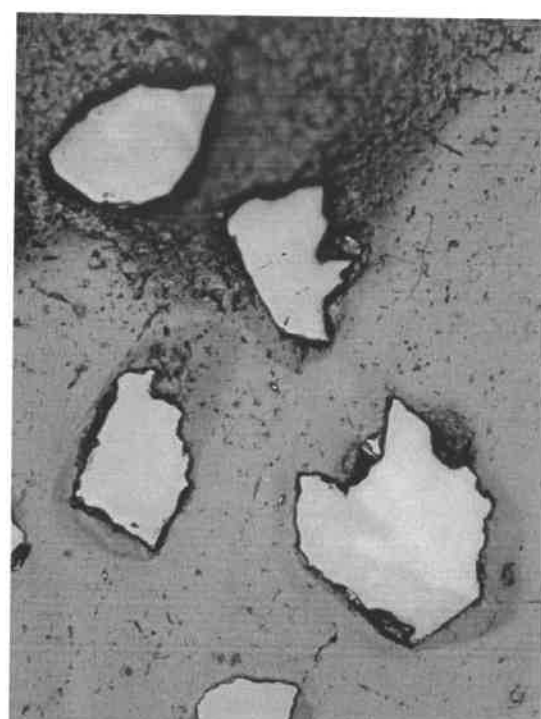
DSCN9453.JPG
1160x870, 32bit, 1.4MB



DSCN9454.JPG
1160x870, 32bit, 1.5MB

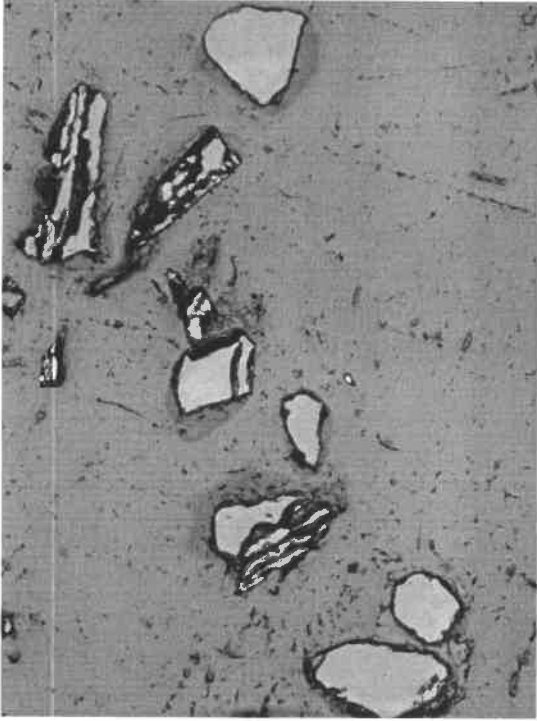


DSCN9455.JPG
1160x870, 32bit, 1.5MB

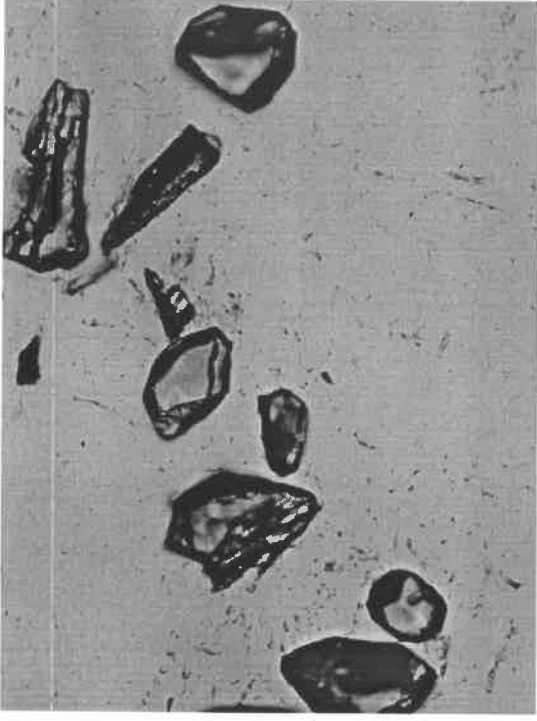


DSCN9456.JPG
1160x870, 32bit, 1.5MB

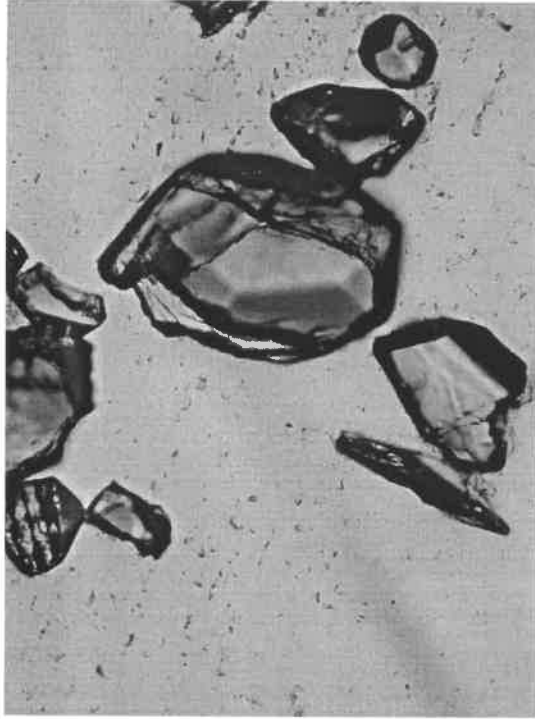
04-84 STANDARDS REVERSE



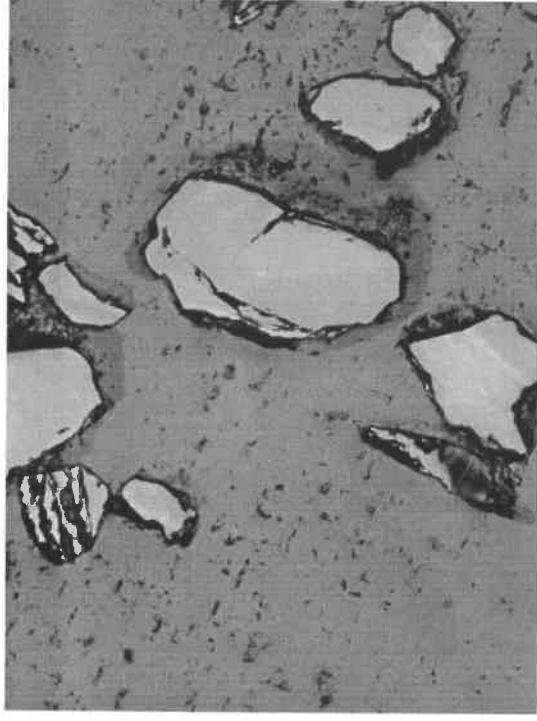
DSCN9457.JPG
1160x870, 32bit, 1.5MB



DSCN9458.JPG
1160x870, 32bit, 1.5MB

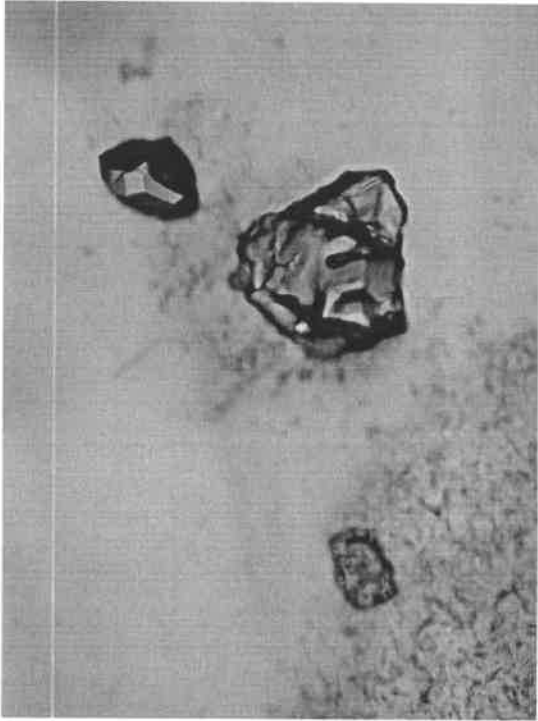


DSCN9459.JPG
1160x870, 32bit, 1.5MB

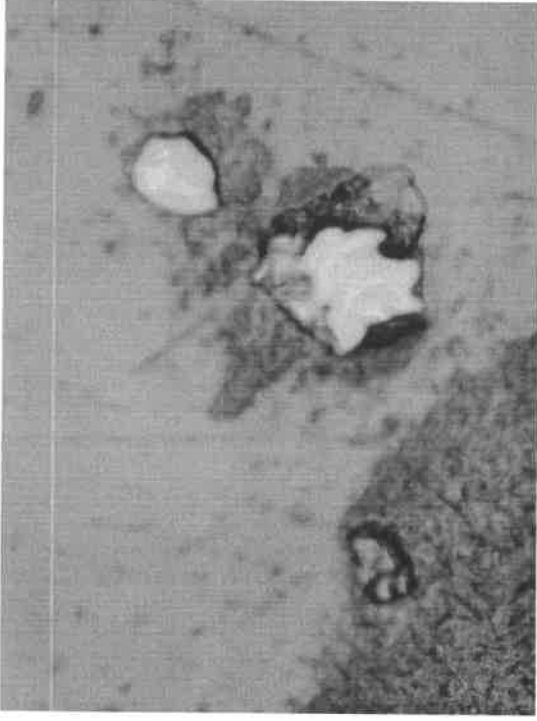


DSCN9460.JPG
1160x870, 32bit, 1.5MB

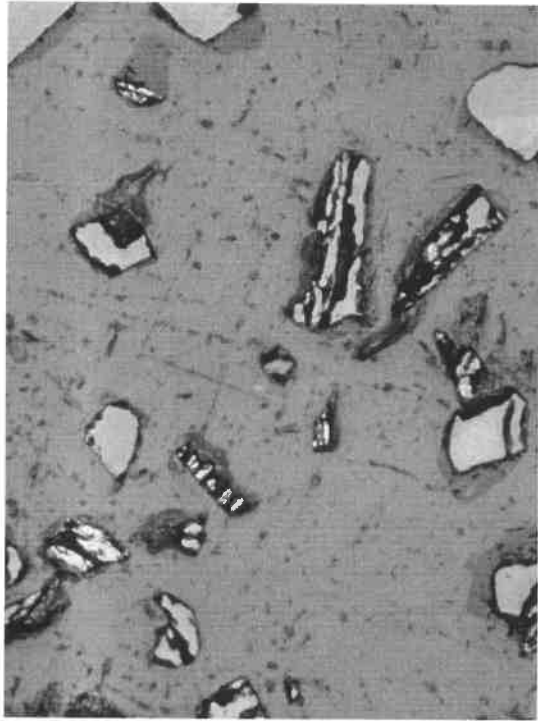
04-84 STANDARDS REVERSE



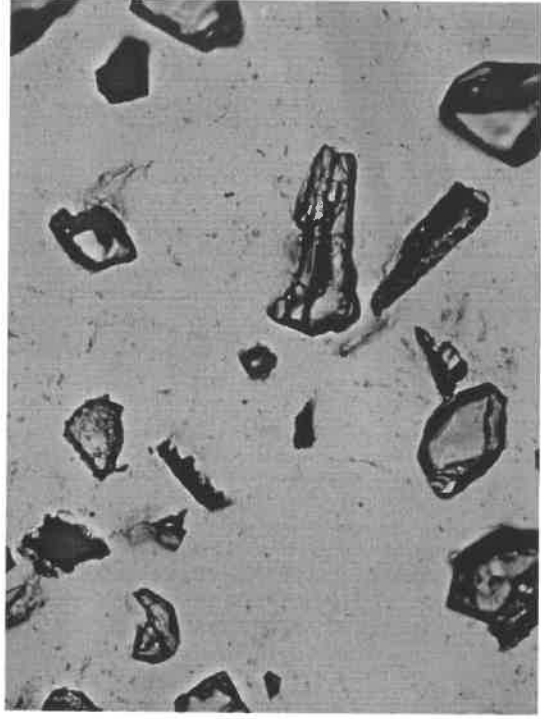
DSCN9468.JPG
1160x870, 32bit, 1.4MB



DSCN9469.JPG
1160x870, 32bit, 1.4MB

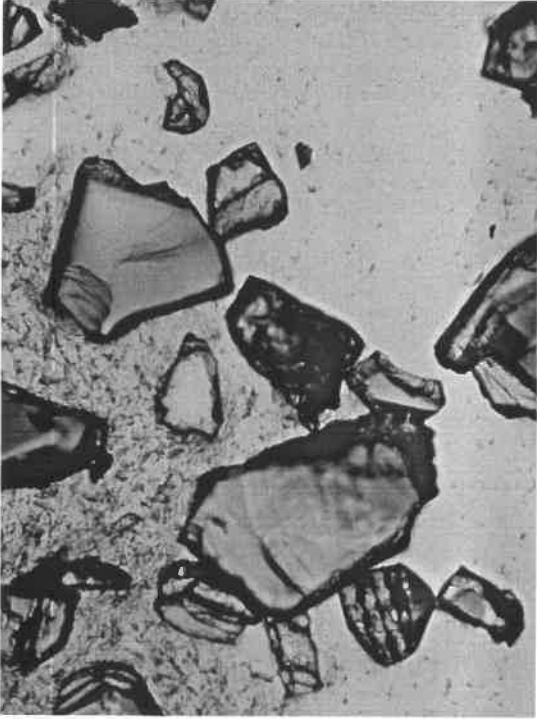


DSCN9470.JPG
1160x870, 32bit, 1.5MB

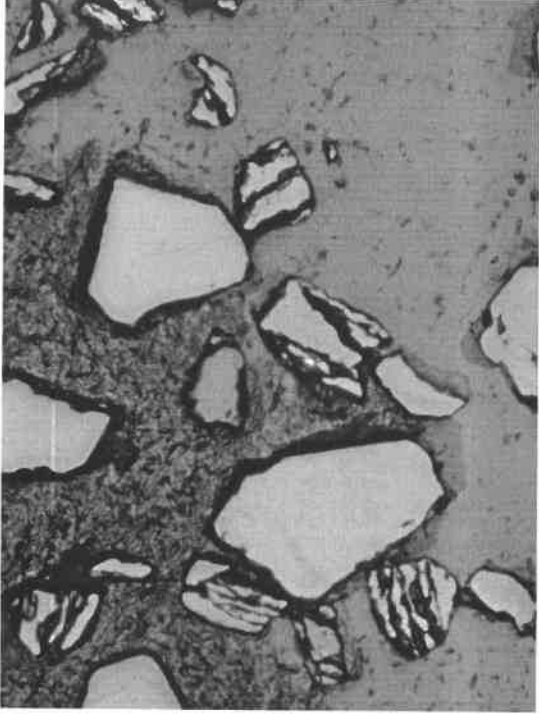


DSCN9471.JPG
1160x870, 32bit, 1.5MB

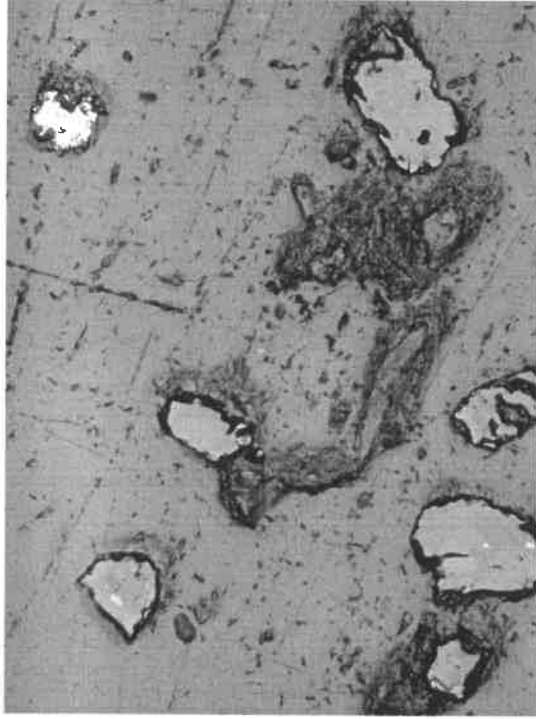
04-84 STANDARDS REVERSE



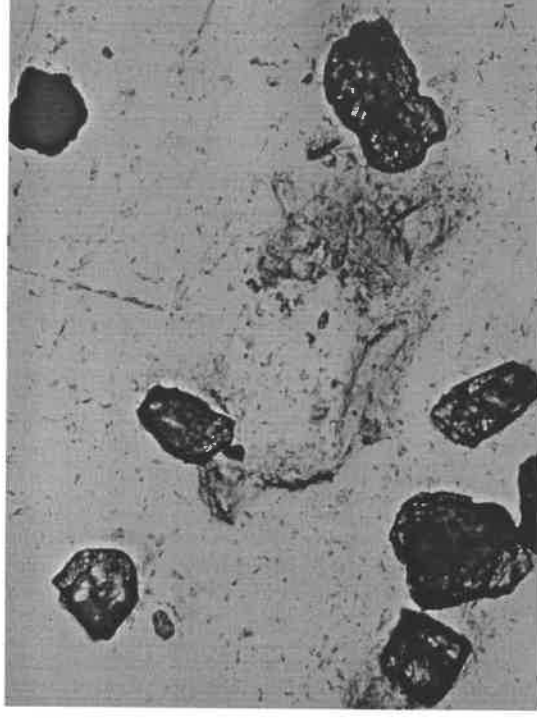
DSCN9472.JPG
1160x870, 32bit, 1.5MB



DSCN9473.JPG
1160x870, 32bit, 1.5MB

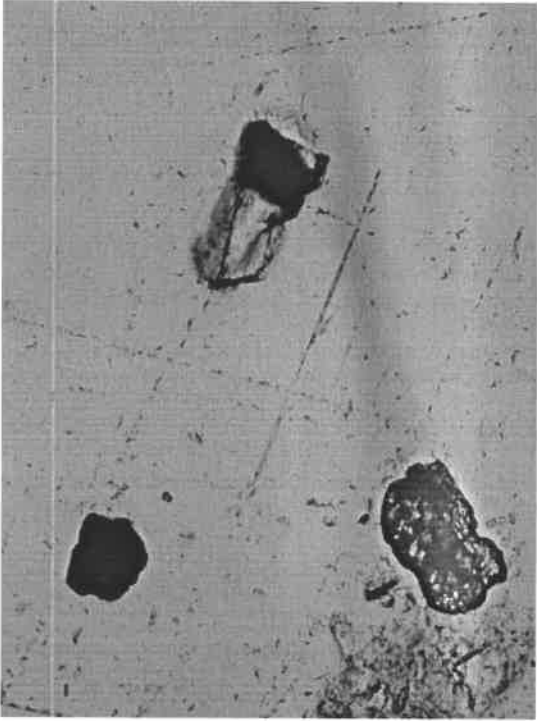


DSCN9474.JPG
1160x870, 32bit, 1.6MB

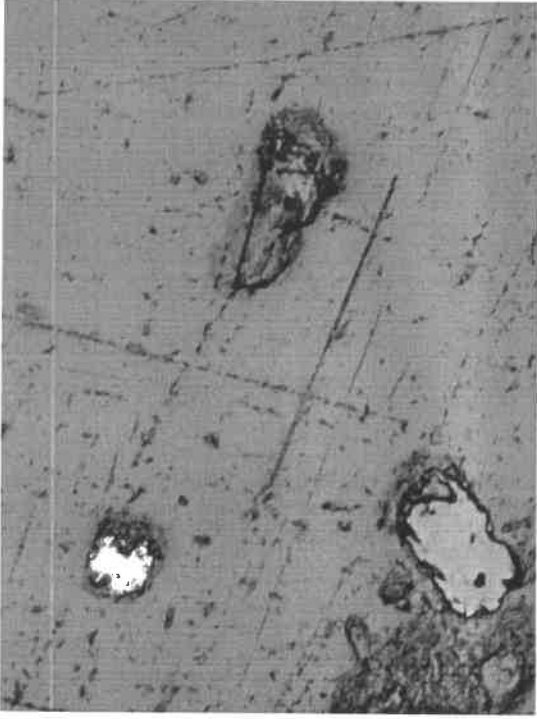


DSCN9475.JPG
1160x870, 32bit, 1.5MB

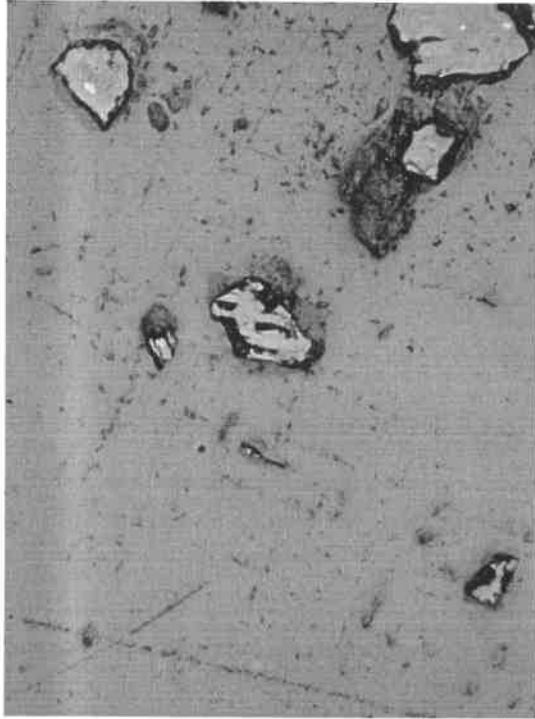
04-84 STANDARDS REVERSE



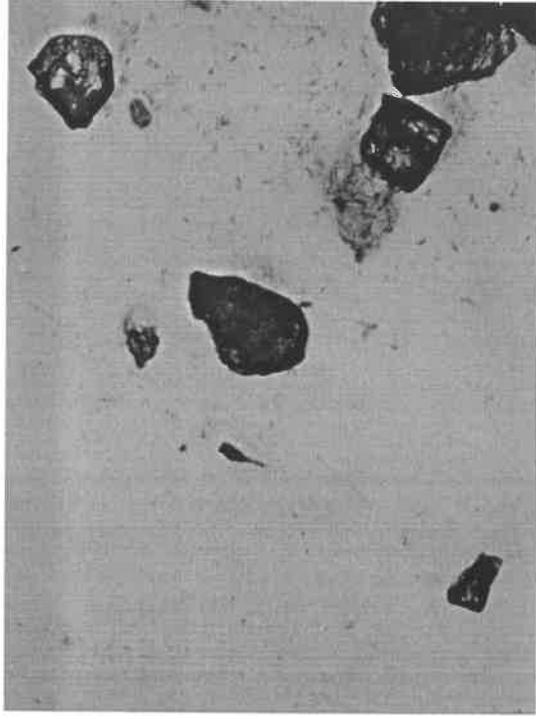
DSCN9476.JPG
1160x870, 32bit, 1.5MB



DSCN9477.JPG
1160x870, 32bit, 1.4MB

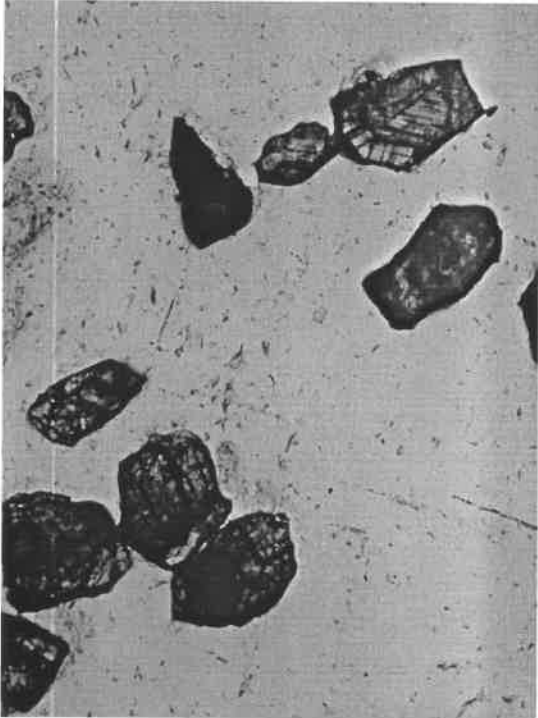


DSCN9478.JPG
1160x870, 32bit, 1.5MB

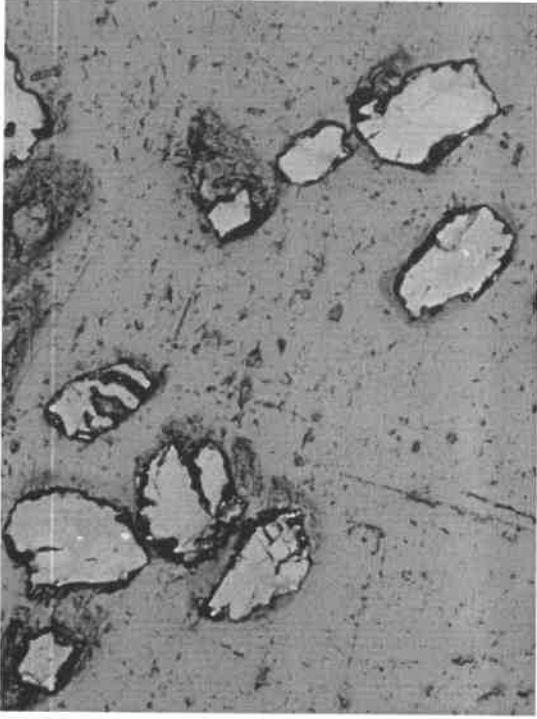


DSCN9479.JPG
1160x870, 32bit, 1.4MB

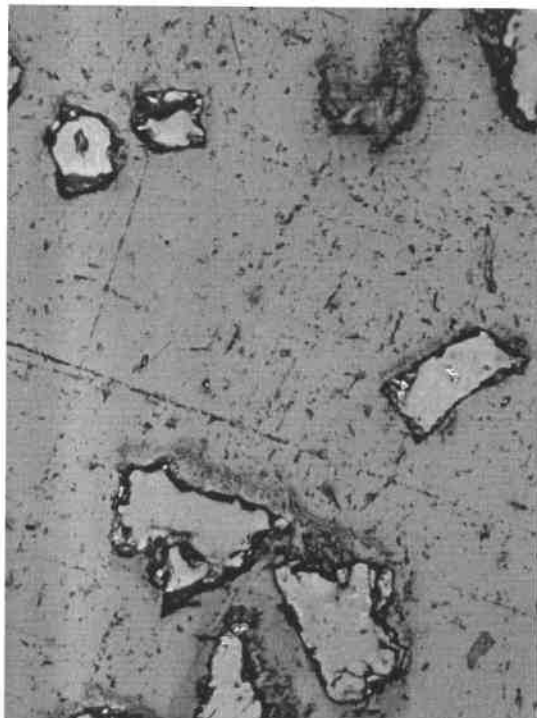
04-84 STANDARDS REVERSE



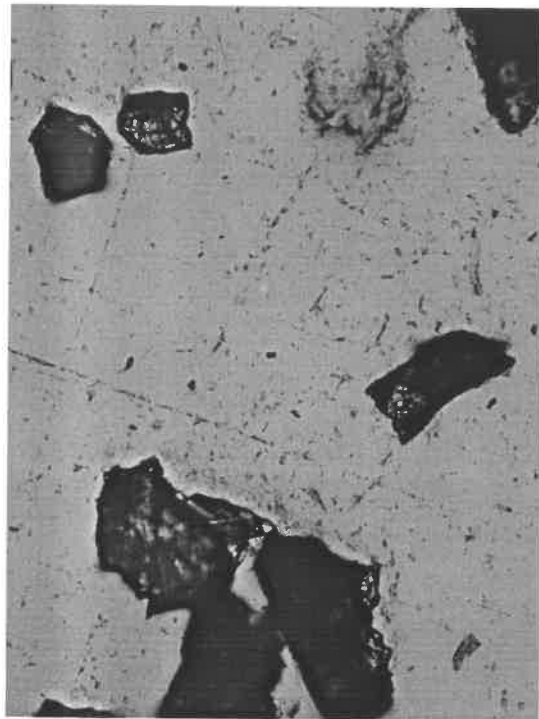
DSCN9480.JPG
1160x870, 32bit, 1.5MB



DSCN9481.JPG
1160x870, 32bit, 1.5MB



DSCN9482.JPG
1160x870, 32bit, 1.5MB

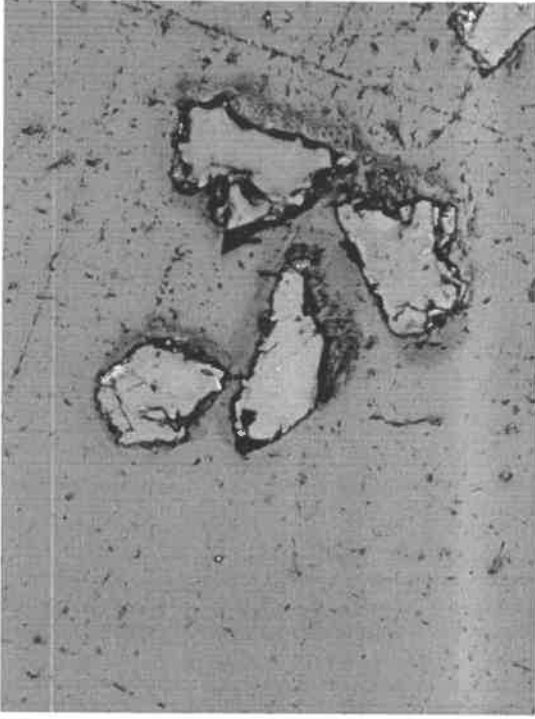


DSCN9483.JPG
1160x870, 32bit, 1.5MB

04-84 STANDARDS REVERSE



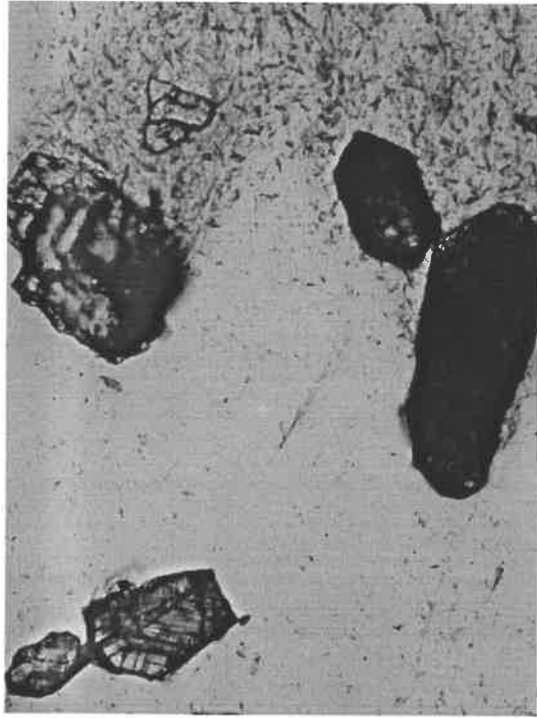
DSCN9484.JPG
1160x870, 32bit, 1.5MB



DSCN9485.JPG
1160x870, 32bit, 1.5MB



DSCN9486.JPG
1160x870, 32bit, 1.5MB

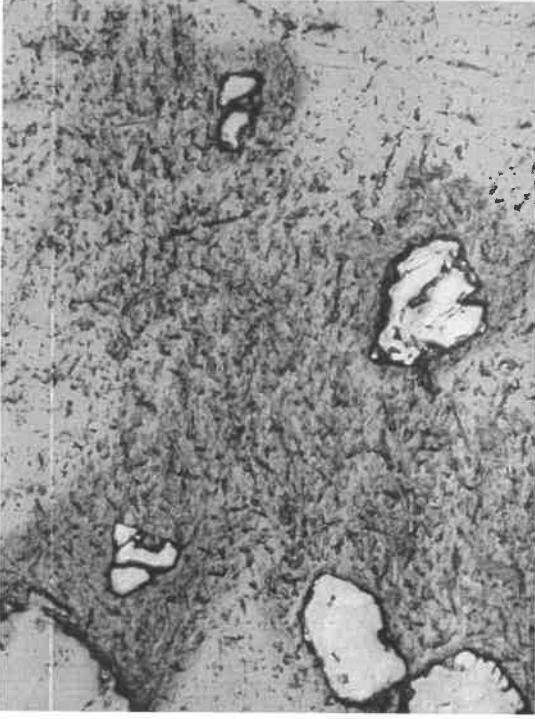


DSCN9487.JPG
1160x870, 32bit, 1.6MB

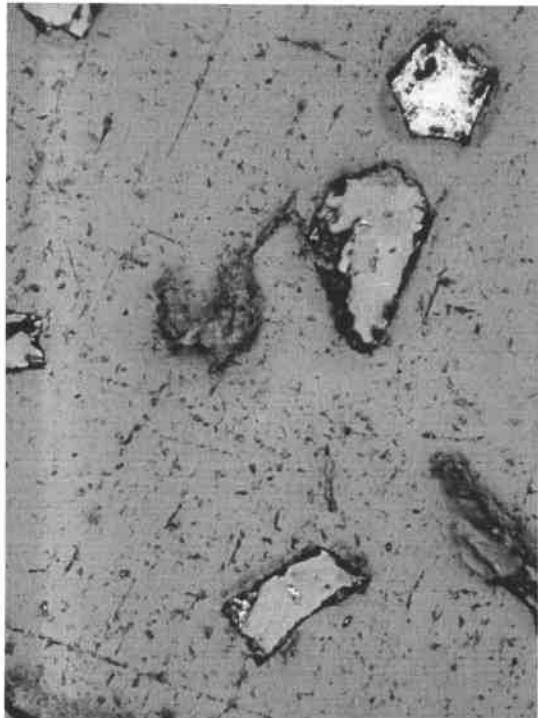
04-84 STANDARDS REVERSE



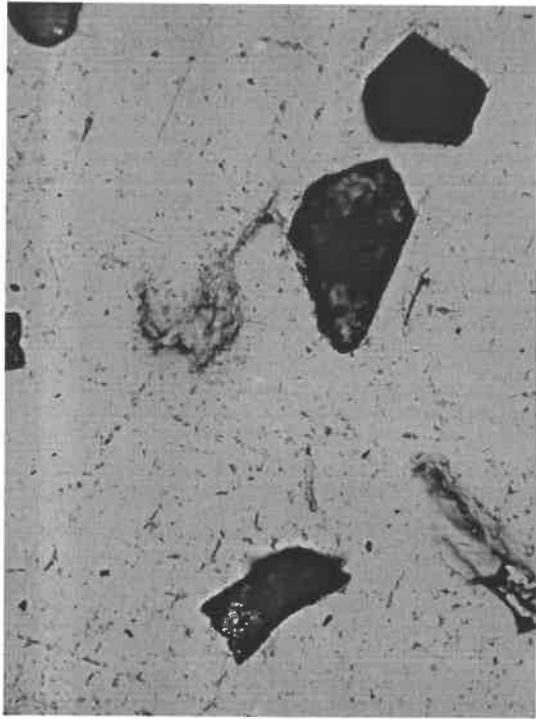
DSCN9488.JPG
1160x870, 32bit, 1.7MB



DSCN9489.JPG
1160x870, 32bit, 1.7MB

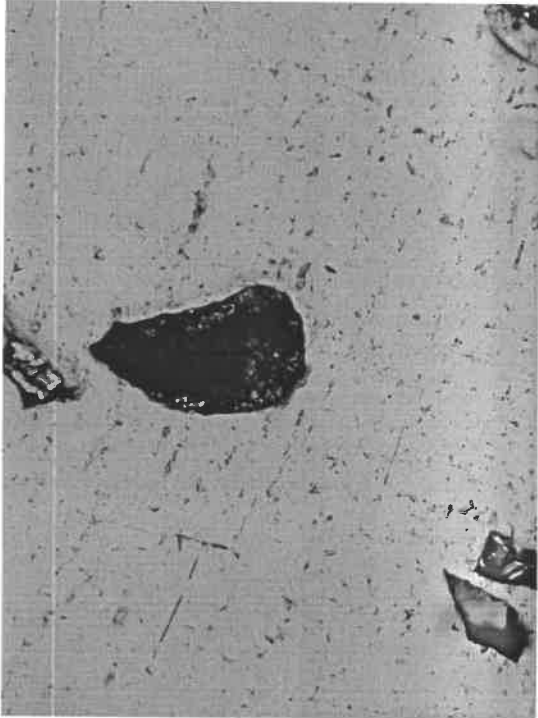


DSCN9490.JPG
1160x870, 32bit, 1.5MB

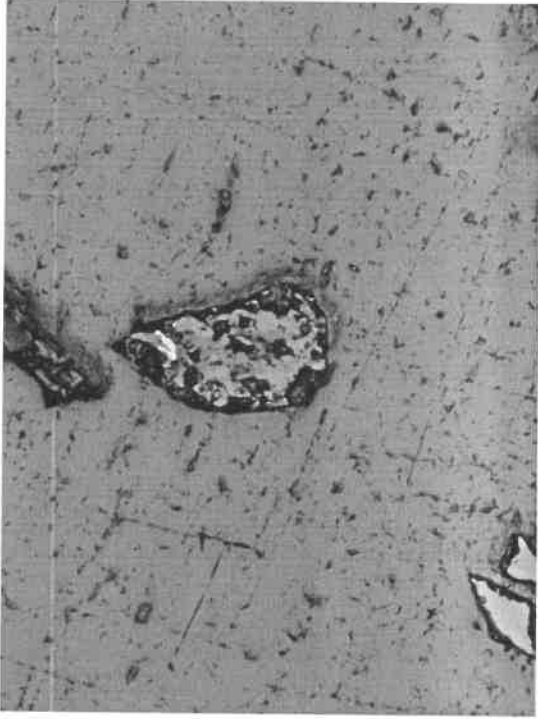


DSCN9491.JPG
1160x870, 32bit, 1.5MB

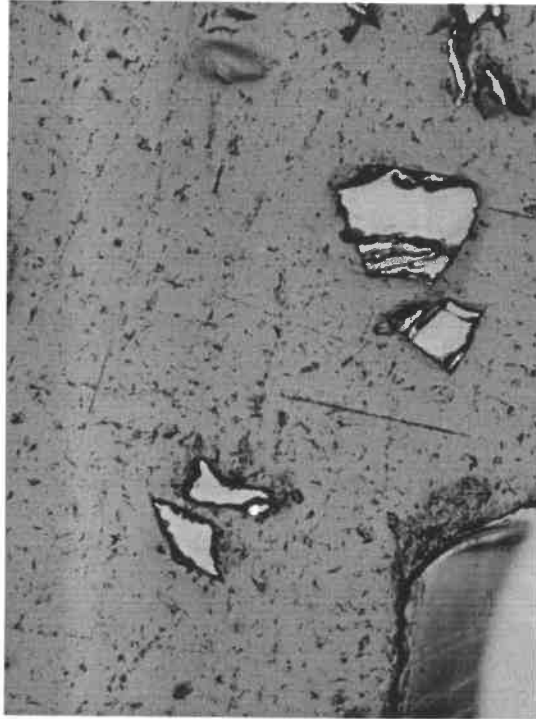
04-84 STANDARDS REVERSE



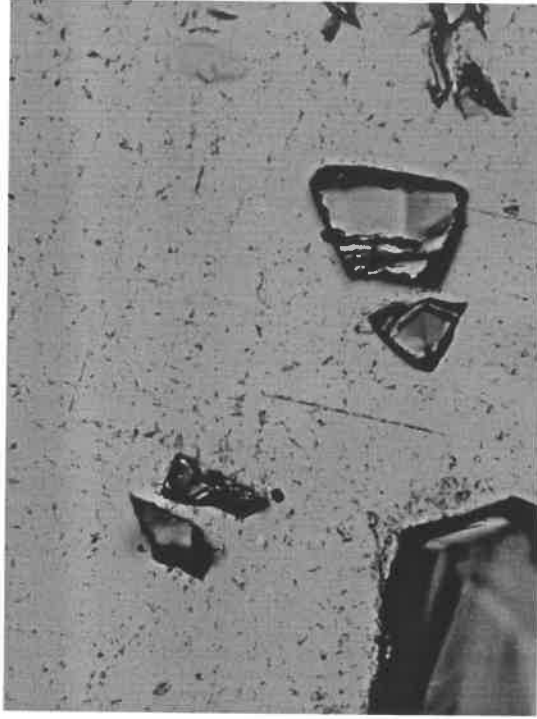
DSCN9492.JPG
1160x870, 32bit, 1.5MB



DSCN9493.JPG
1160x870, 32bit, 1.5MB



DSCN9494.JPG
1160x870, 32bit, 1.5MB



DSCN9495.JPG
1160x870, 32bit, 1.5MB

04-84 STANDARDS REVERSE



DSCN9496.JPG
1160x870, 32bit, 1.6MB



DSCN9497.JPG
1160x870, 32bit, 1.5MB



DSCN9498.JPG
1160x870, 32bit, 1.5MB



DSCN9499.JPG
1160x870, 32bit, 1.7MB

04-84 STANDARDS REVERSE



DSCN9500.JPG
1160x870, 32bit, 1.5MB



DSCN9501.JPG
1160x870, 32bit, 1.5MB



DSCN9502.JPG
1160x870, 32bit, 1.5MB

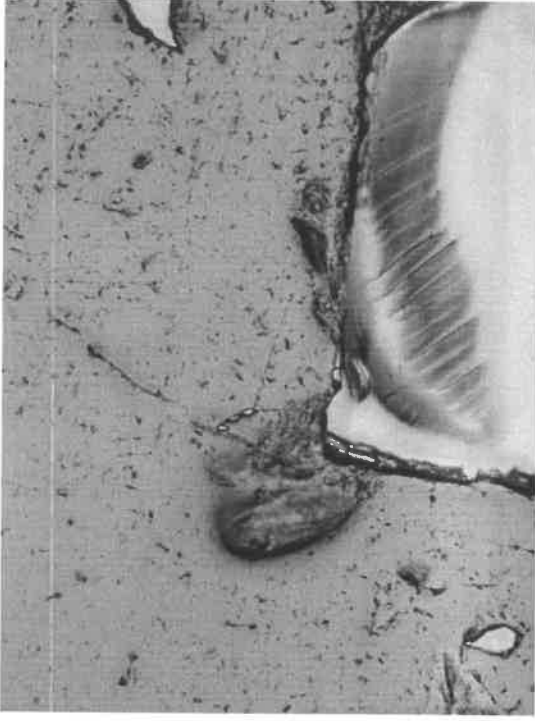


DSCN9503.JPG
1160x870, 32bit, 1.5MB

04-84 STANDARDS REVERSE



DSCN9504.JPG
1160x870, 32bit, 1.5MB



DSCN9505.JPG
1160x870, 32bit, 1.5MB



DSCN9506.JPG
1160x870, 32bit, 1.5MB



DSCN9507.JPG
1160x870, 32bit, 1.5MB

04-84 STANDARDS REVERSE



DSCN9508.JPG
1160x870, 32bit, 1.6MB



DSCN9509.JPG
1160x870, 32bit, 1.5MB

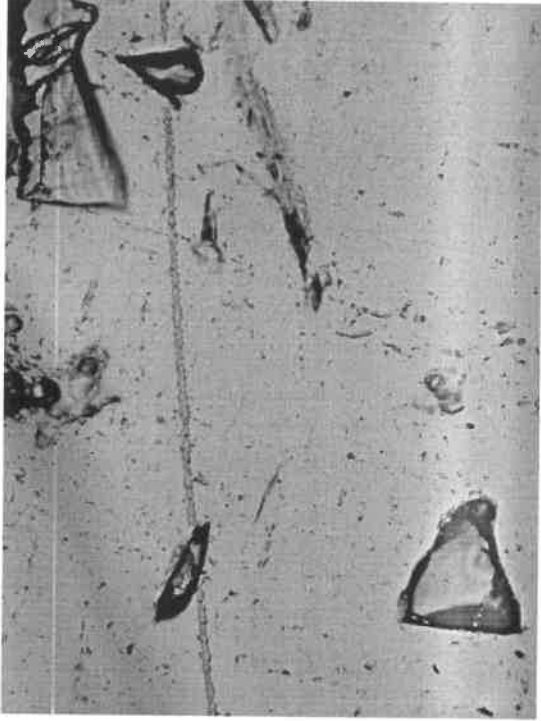


DSCN9510.JPG
1160x870, 32bit, 1.5MB



DSCN9511.JPG
1160x870, 32bit, 1.5MB

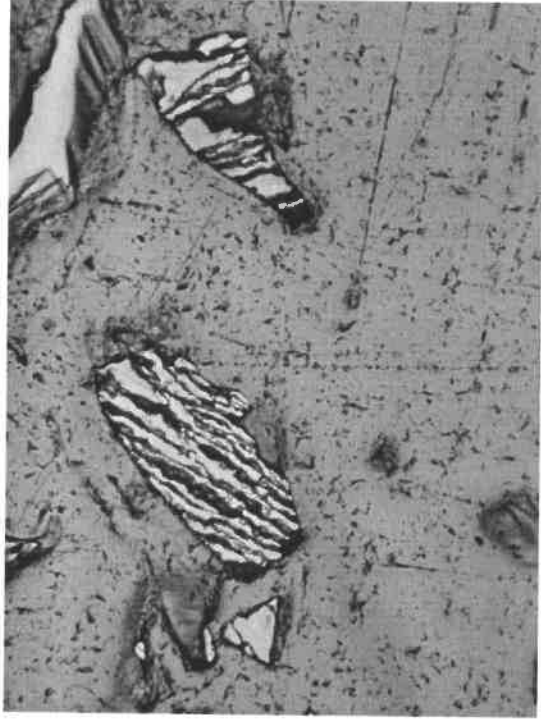
04-84 STANDARDS REVERSE



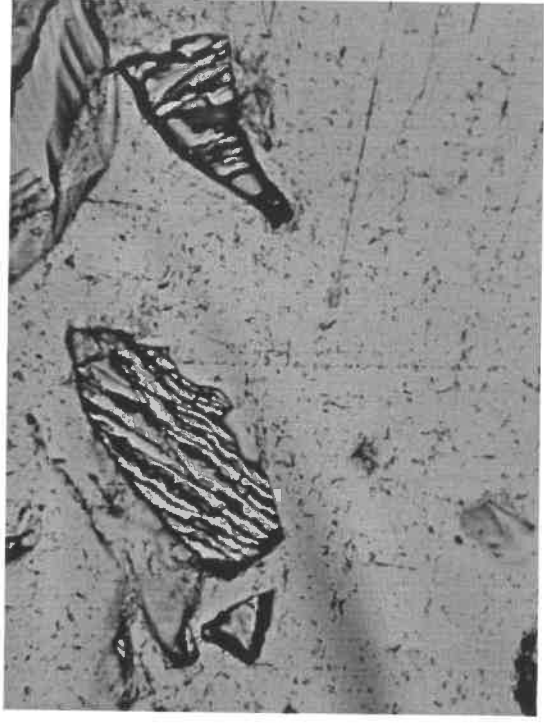
DSCN9512.JPG
1160x870, 32bit, 1.5MB



DSCN9513.JPG
1160x870, 32bit, 1.5MB

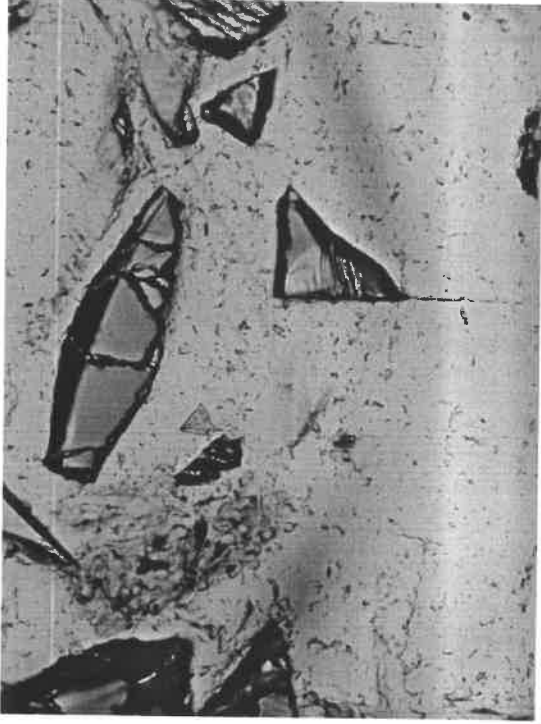


DSCN9514.JPG
1160x870, 32bit, 1.5MB



DSCN9515.JPG
1160x870, 32bit, 1.5MB

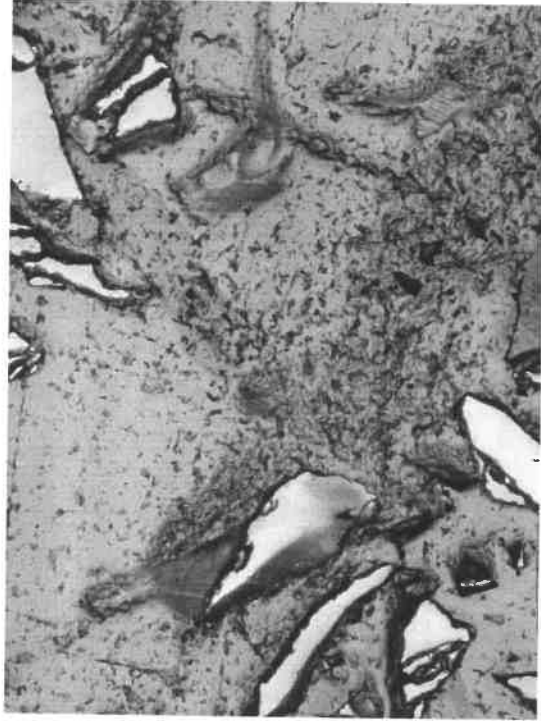
04-84 STANDARDS REVERSE



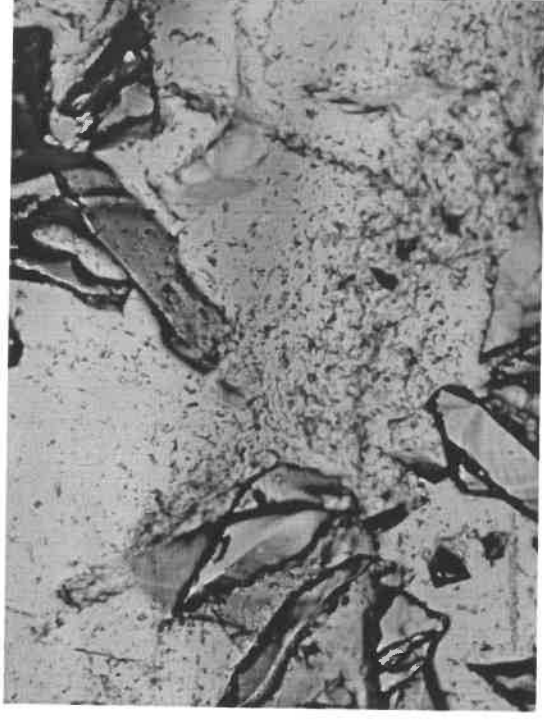
DSCN9516.JPG
1160x870, 32bit, 1.5MB



DSCN9517.JPG
1160x870, 32bit, 1.5MB



DSCN9518.JPG
1160x870, 32bit, 1.6MB



DSCN9519.JPG
1160x870, 32bit, 1.5MB

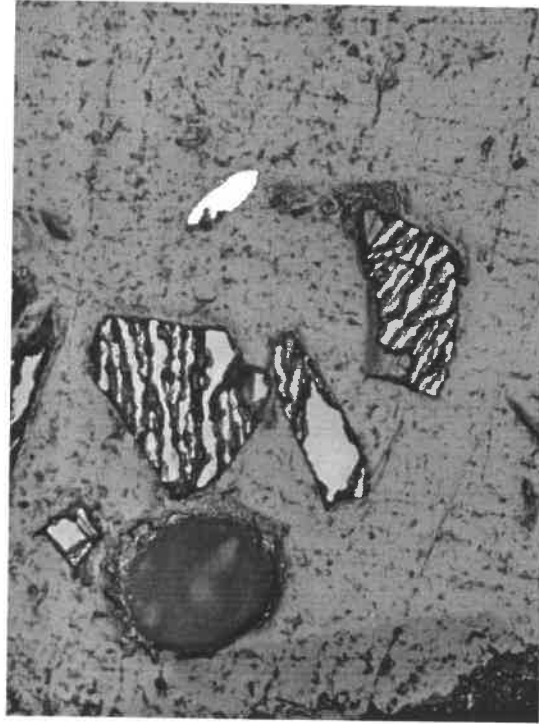
04-84 STANDARDS REVERSE



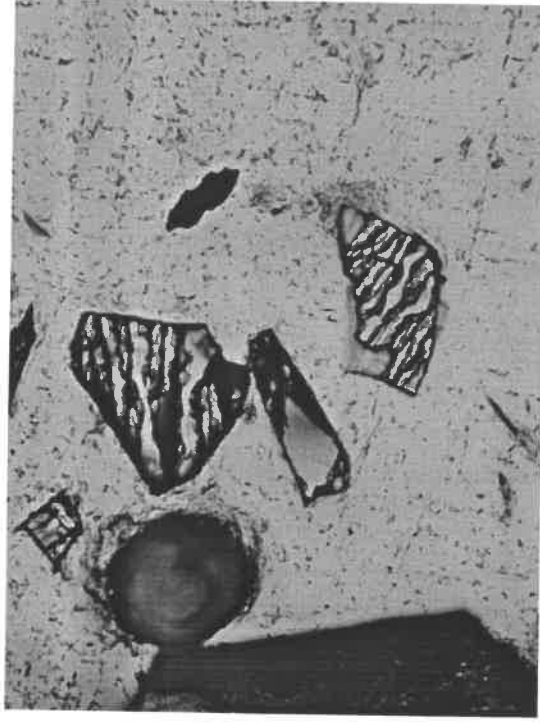
DSCN9520.JPG
1160x870, 32bit, 1.6MB



DSCN9521.JPG
1160x870, 32bit, 1.4MB

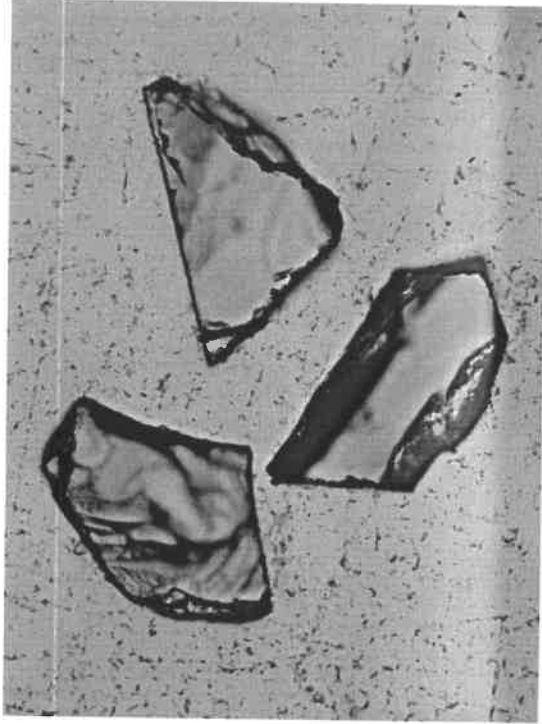


DSCN9522.JPG
1160x870, 32bit, 1.5MB

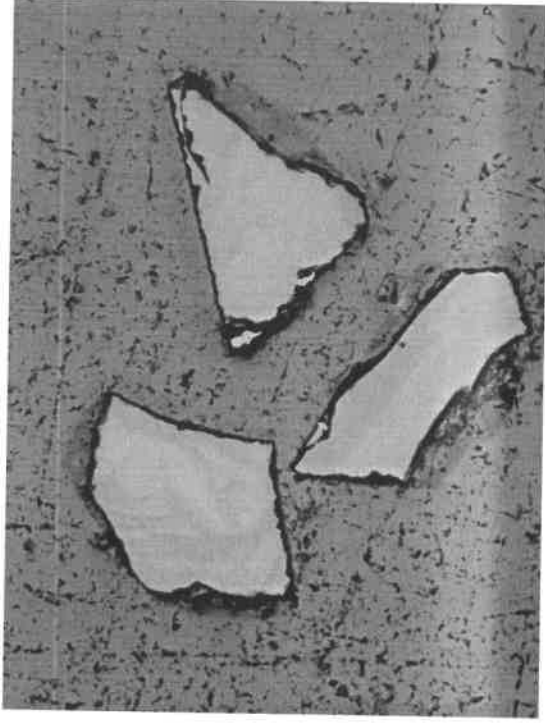


DSCN9523.JPG
1160x870, 32bit, 1.6MB

04-84 STANDARDS REVERSE



DSCN9524.JPG
1160x870, 32bit, 1.5MB



DSCN9525.JPG
1160x870, 32bit, 1.5MB

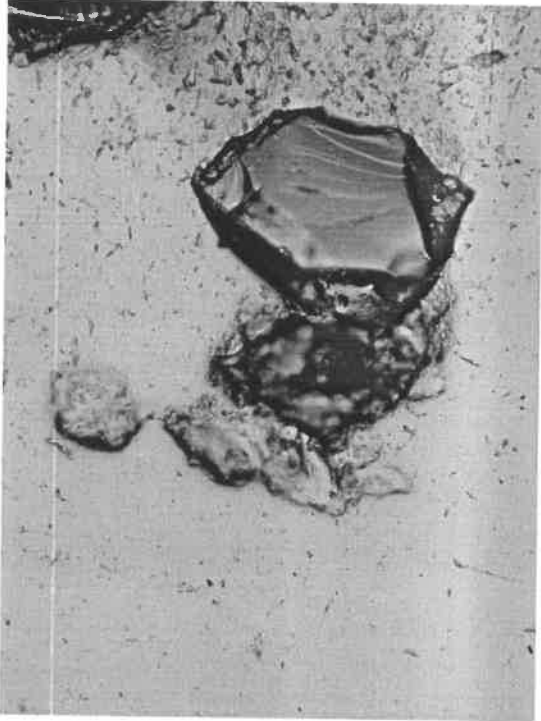


DSCN9526.JPG
1160x870, 32bit, 1.5MB

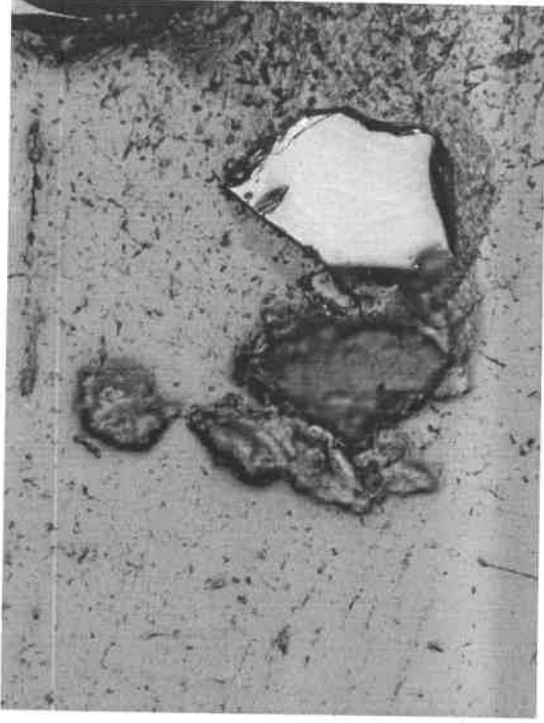


DSCN9527.JPG
1160x870, 32bit, 1.6MB

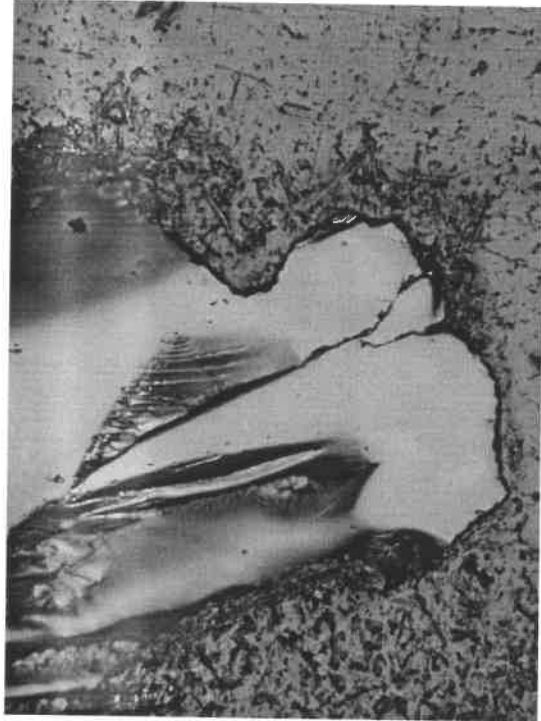
04-84 STANDARDS REVERSE



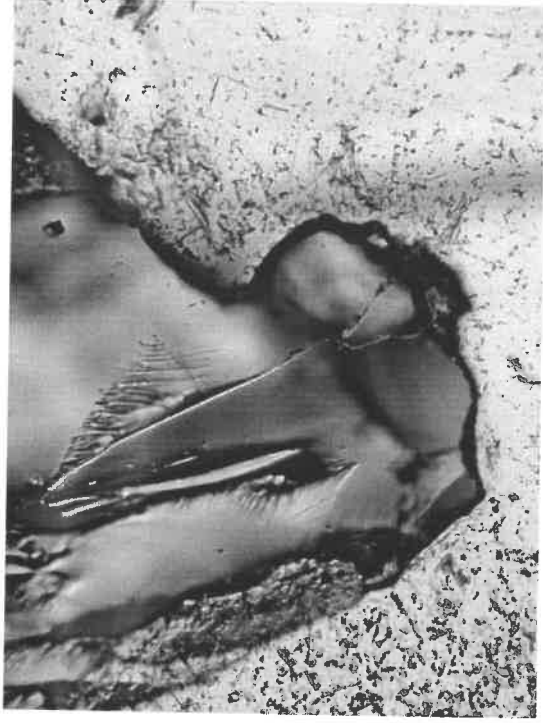
DSCN9528.JPG
1160x870, 32bit, 1.6MB



DSCN9529.JPG
1160x870, 32bit, 1.6MB

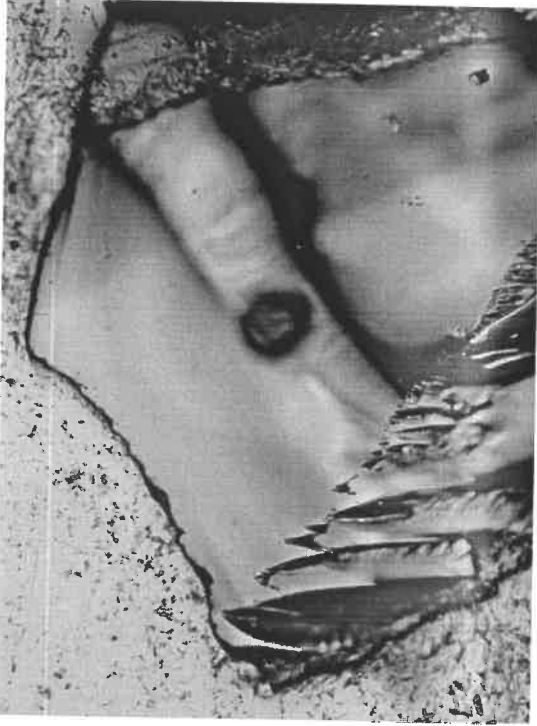


DSCN9530.JPG
1160x870, 32bit, 1.5MB



DSCN9531.JPG
1160x870, 32bit, 1.6MB

04-84 STANDARDS REVERSE



DSCN9532.JPG
1160x870, 32bit, 1.5MB



DSCN9533.JPG
1160x870, 32bit, 1.4MB