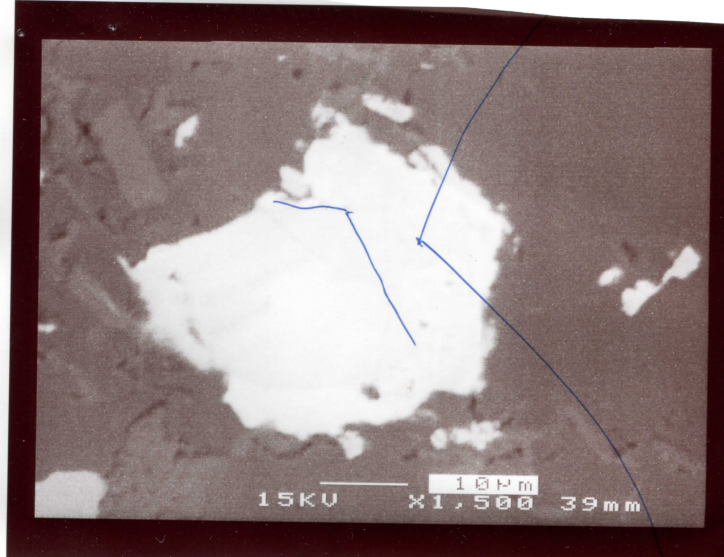


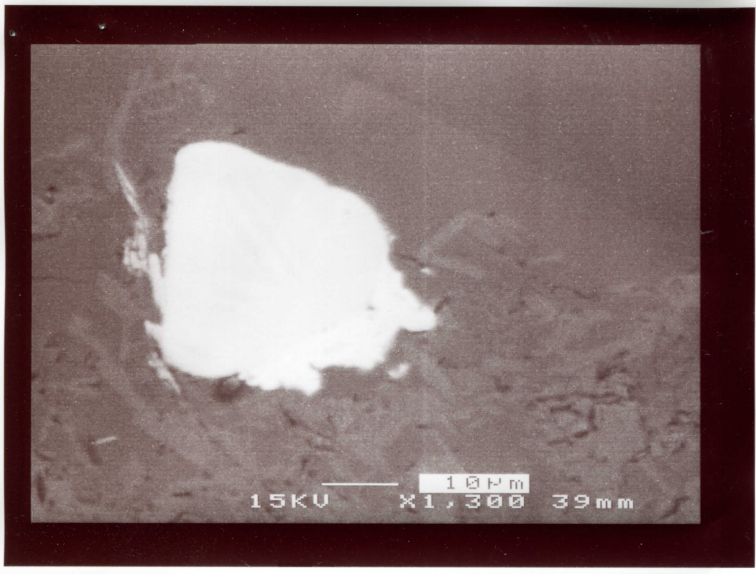
ela2a



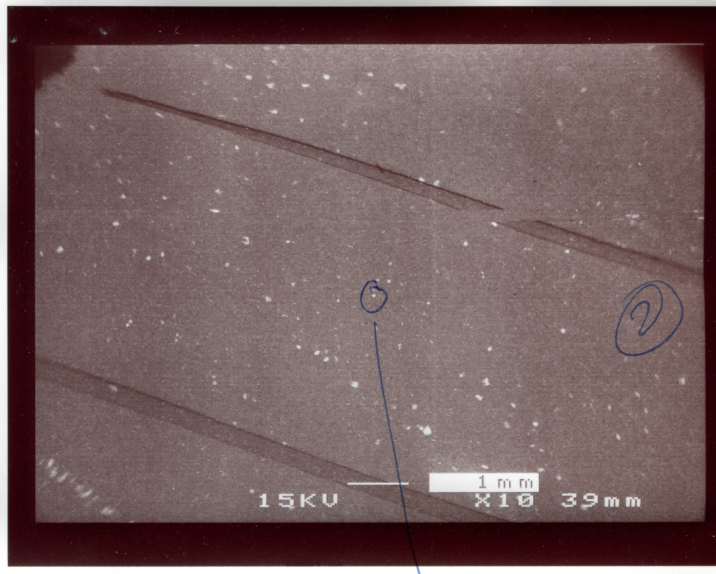
ela2b

①

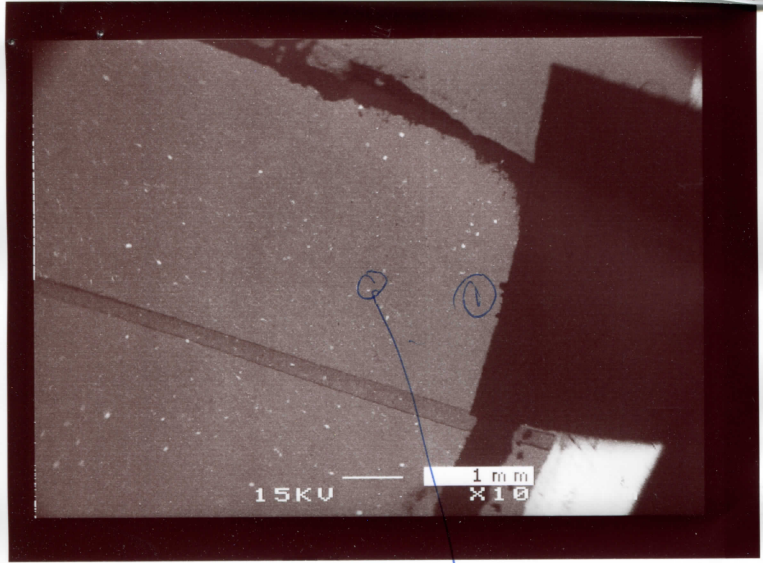
has



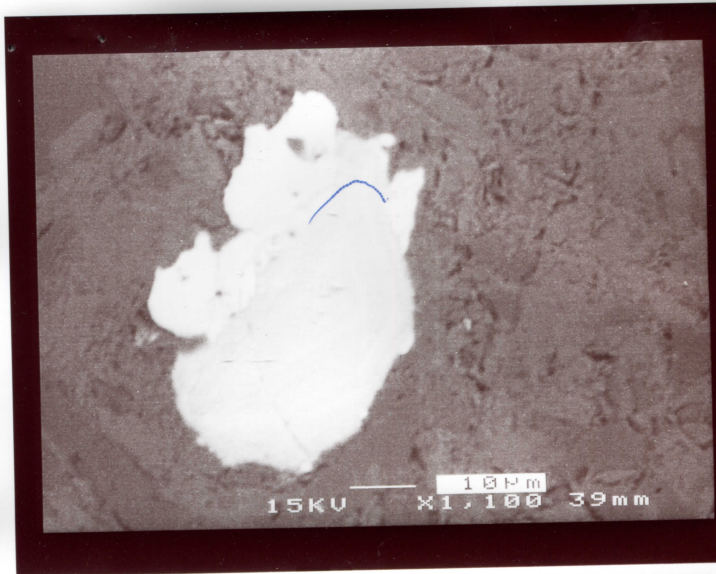
ela2a ①



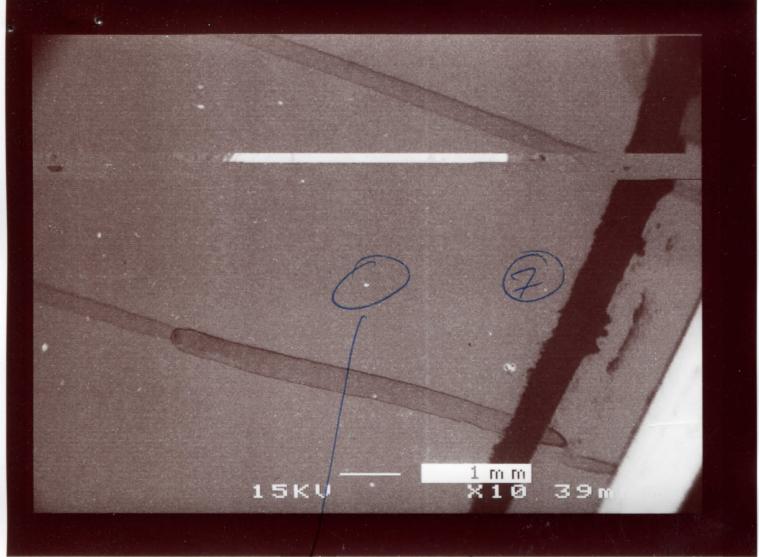
ela2c



ela2b

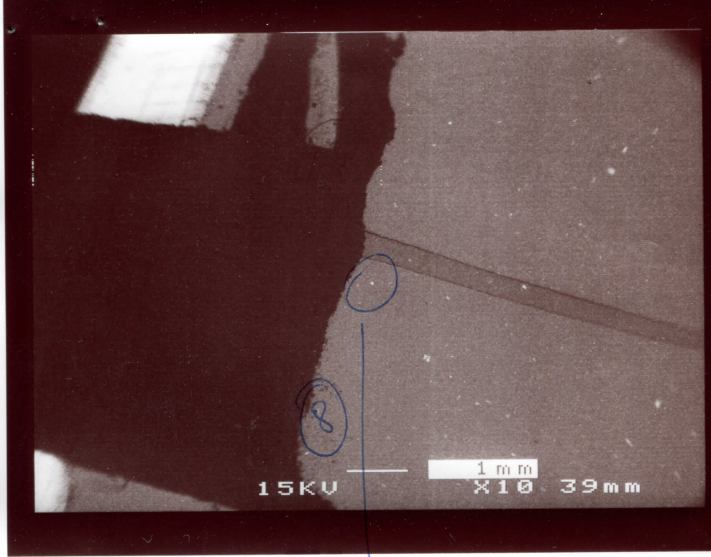


② ela2c



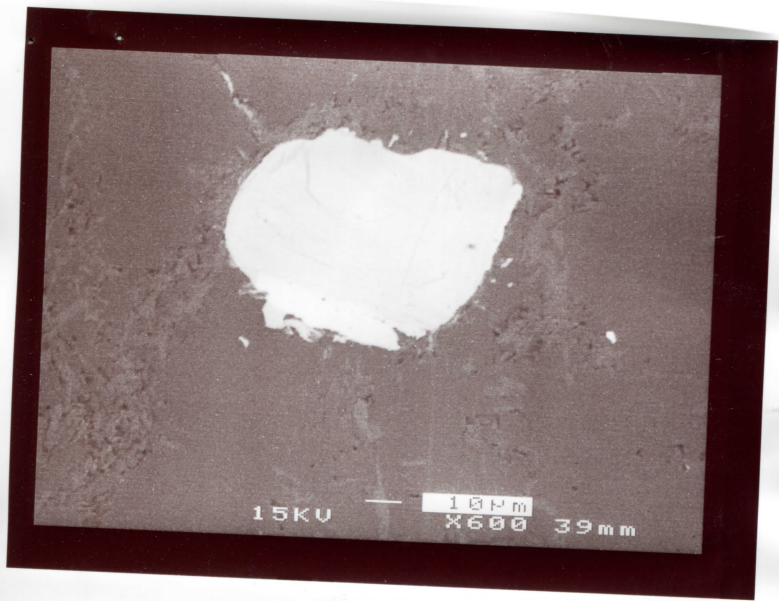
15KV 1mm X10 39mm

ela 2d



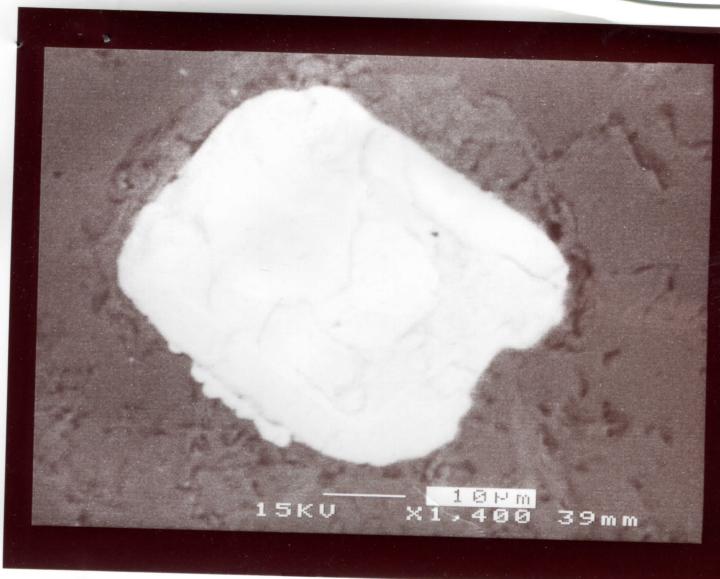
15KV 1mm X10 39mm

ela 2e



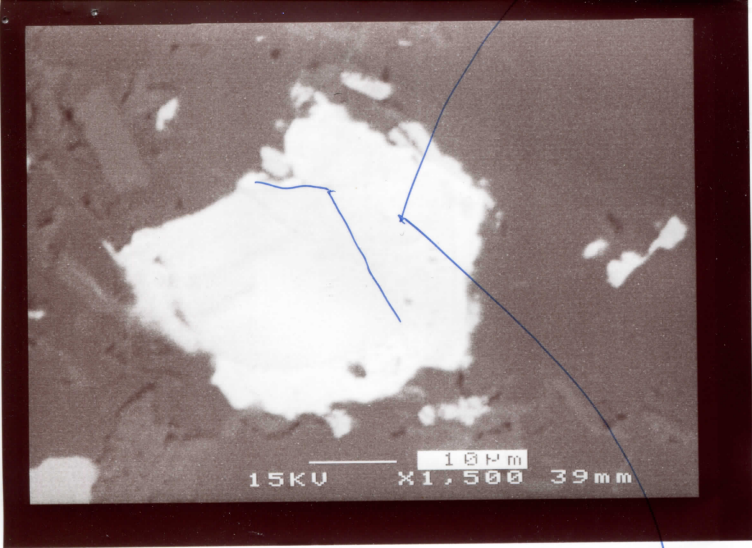
15KV 10μm X600 39mm

ela 2d 7



15KV 10μm X1,400 39mm

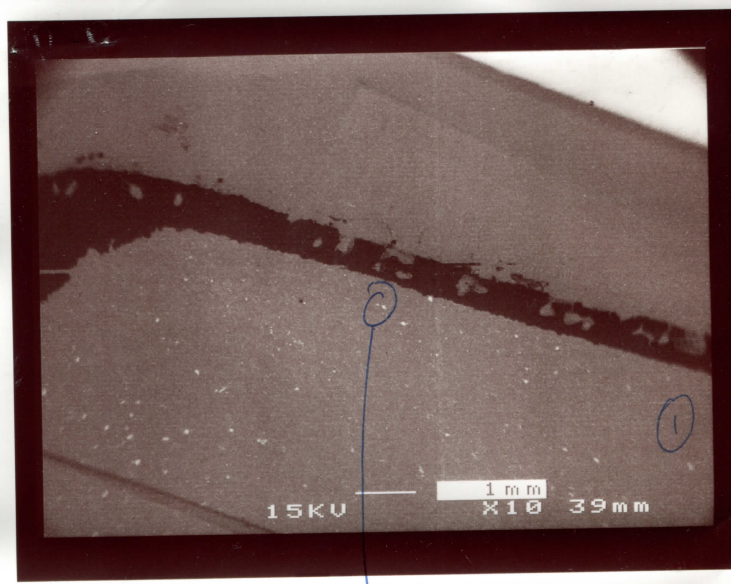
ela 2e 8



clazb

①

has R₂?
inst.

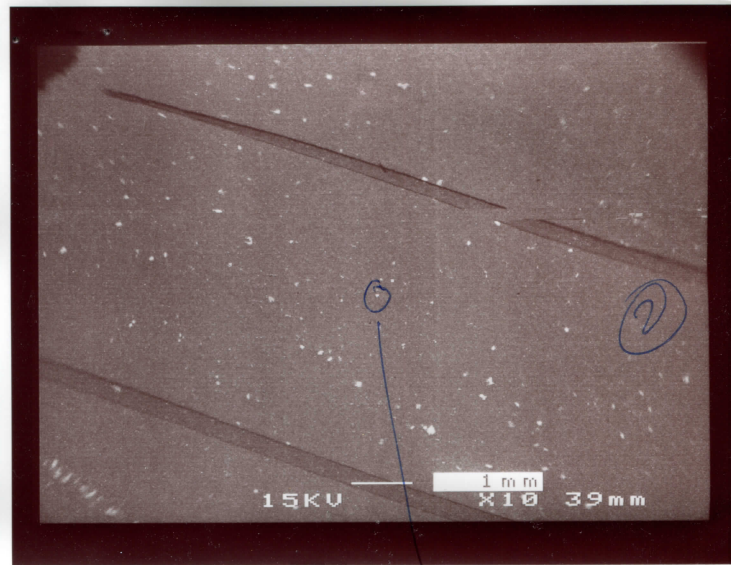


clazc

①

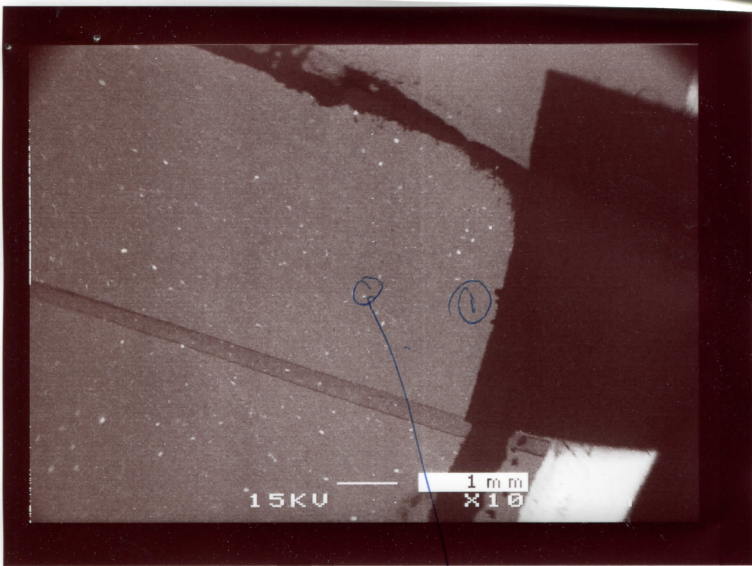


claza ①

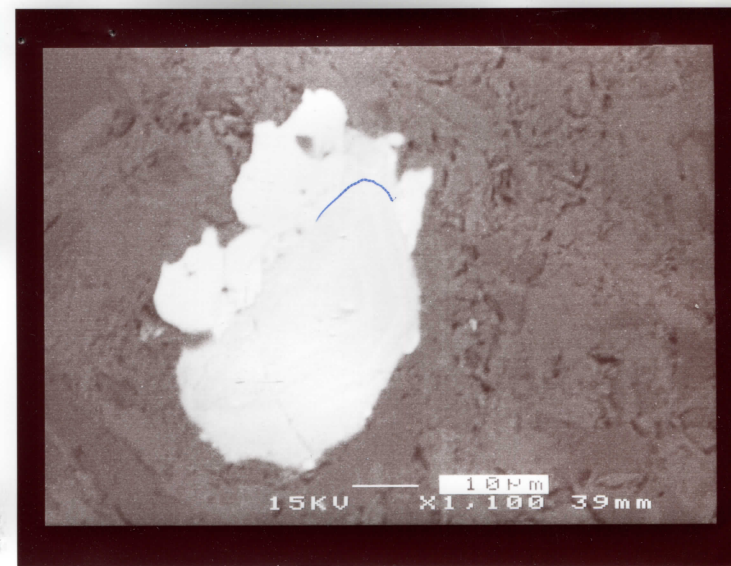


clazc

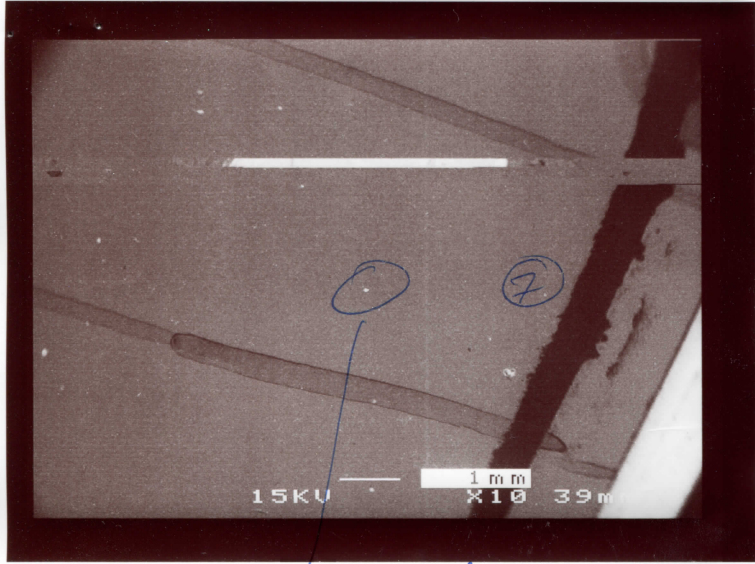
②



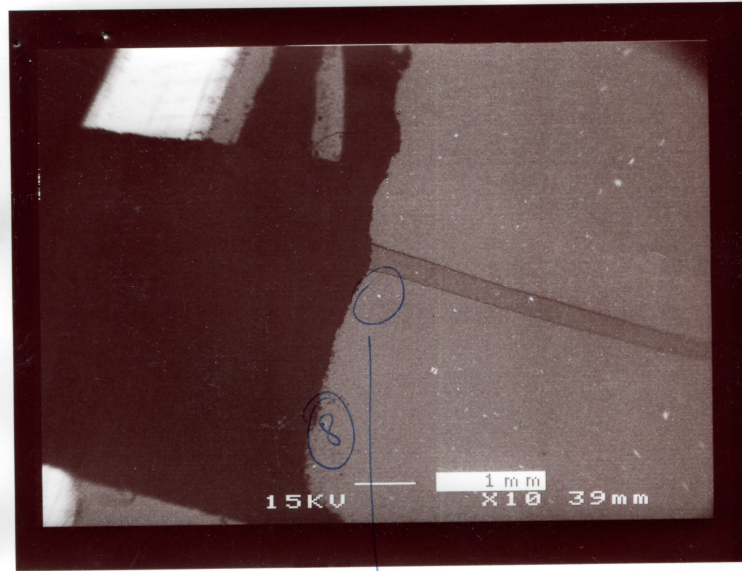
clazb



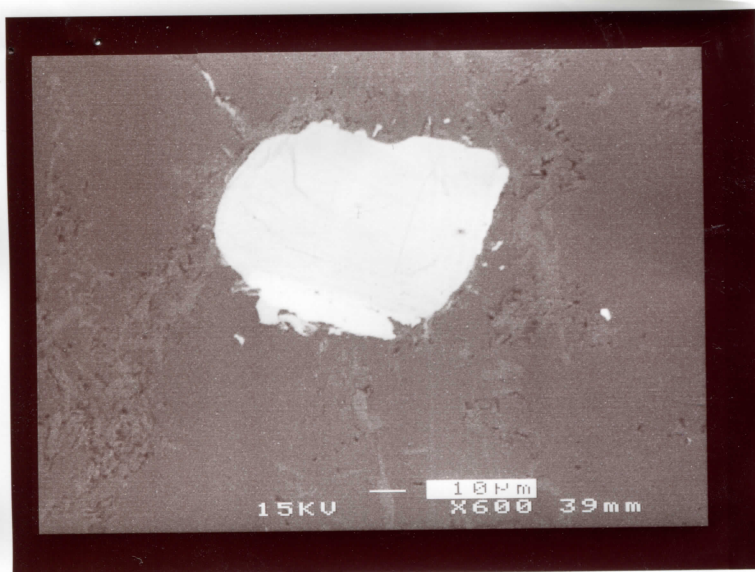
② clazc



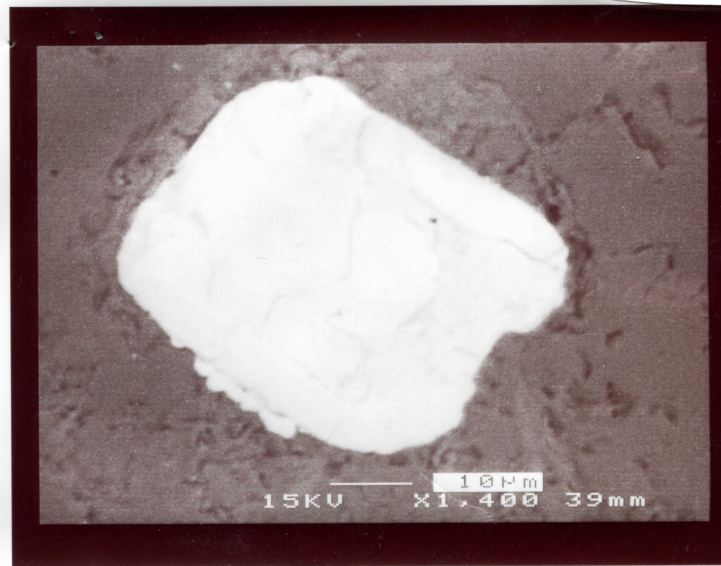
ela 2d



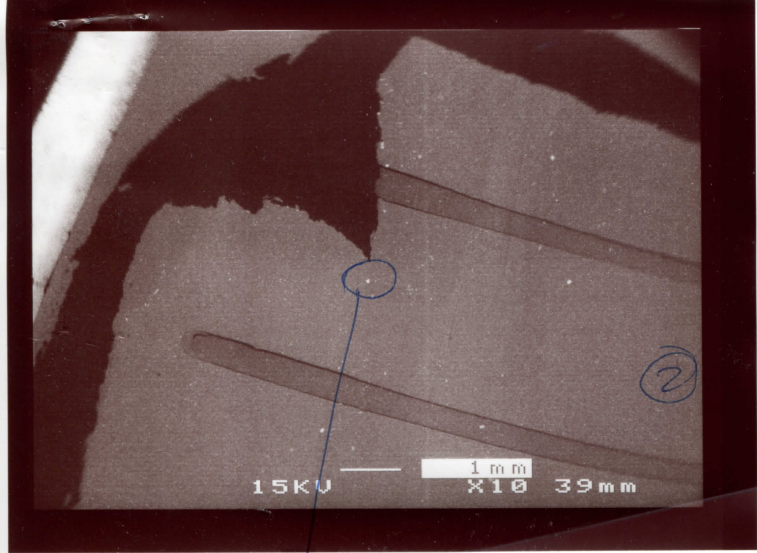
ela 2e



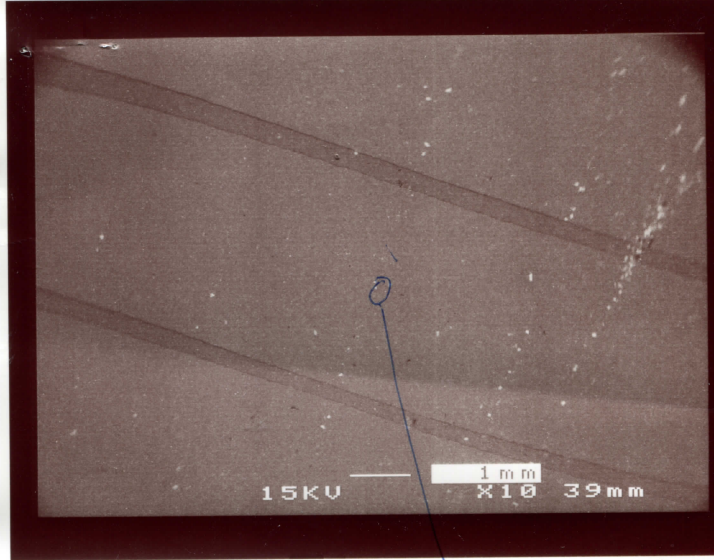
ela 2d ⑦



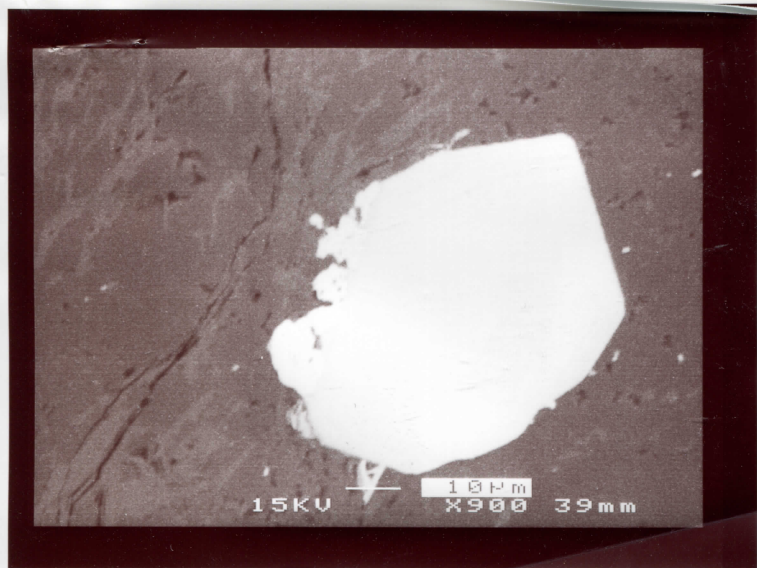
ela 2e ⑧



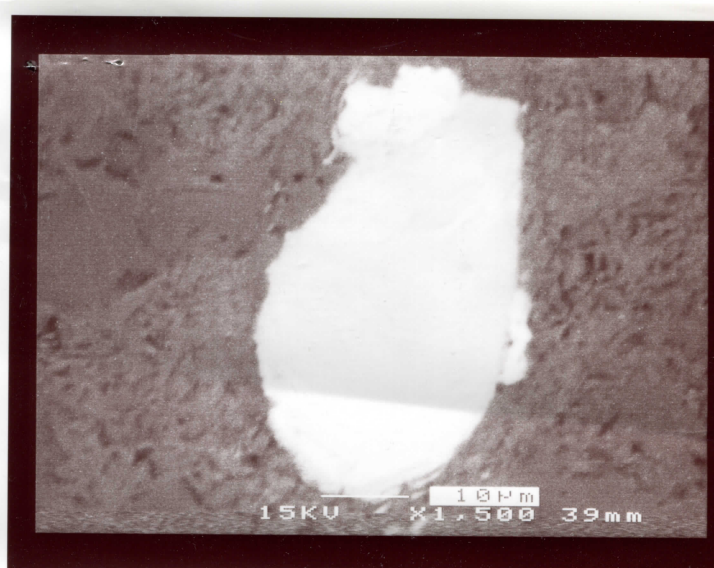
ela 3a



ela 3ba



ela 3a (2)



ela 3ba