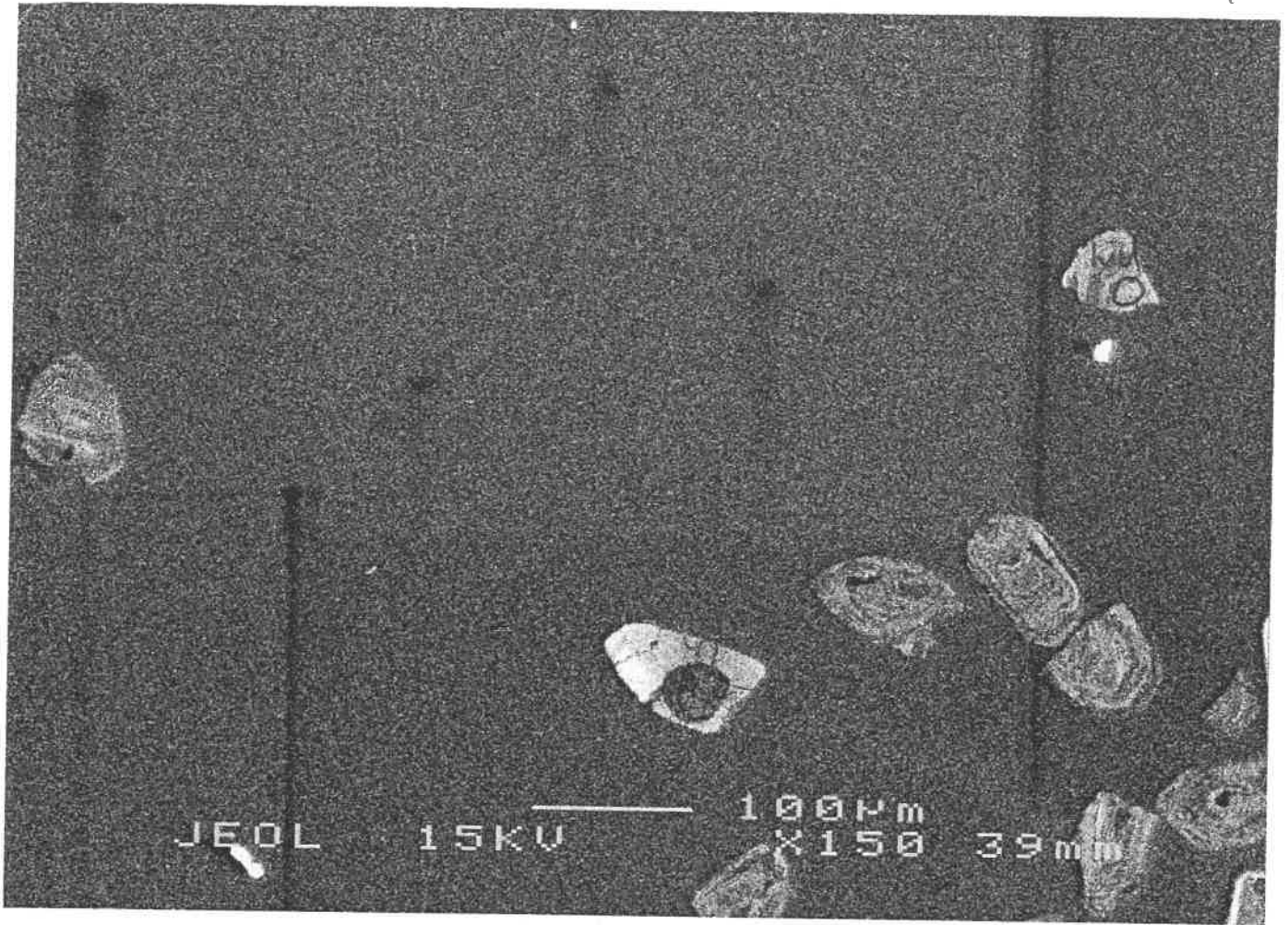
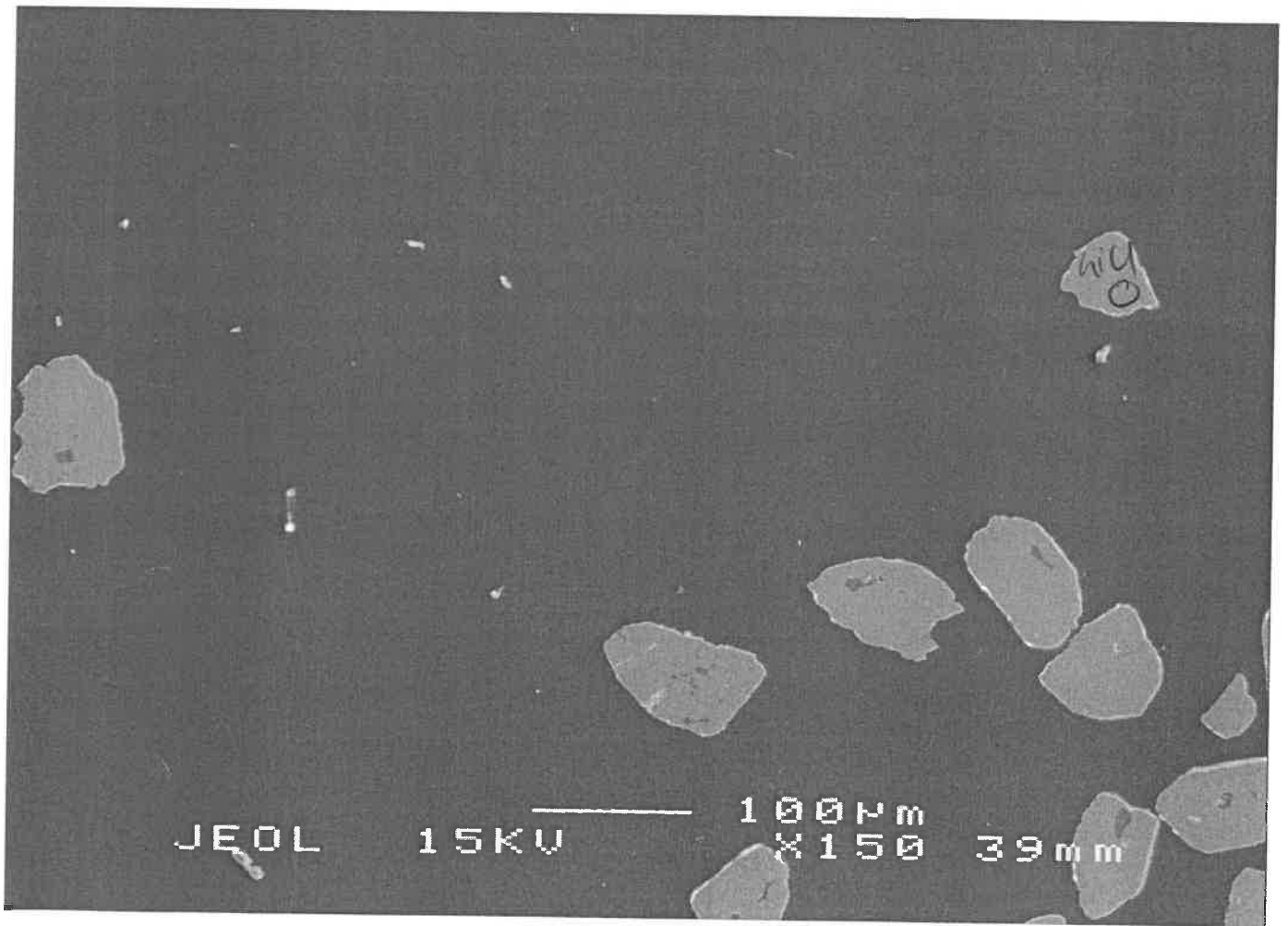


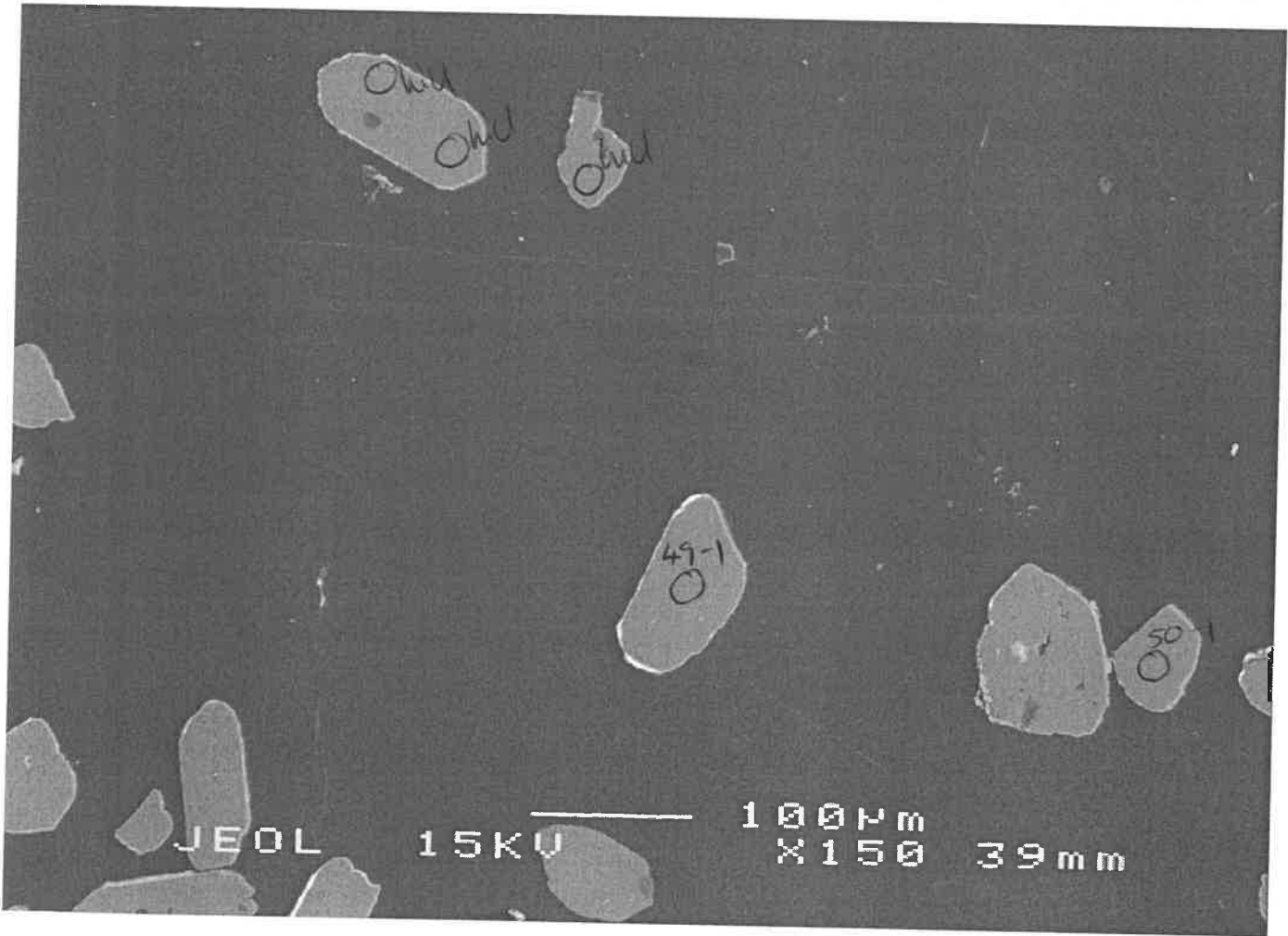
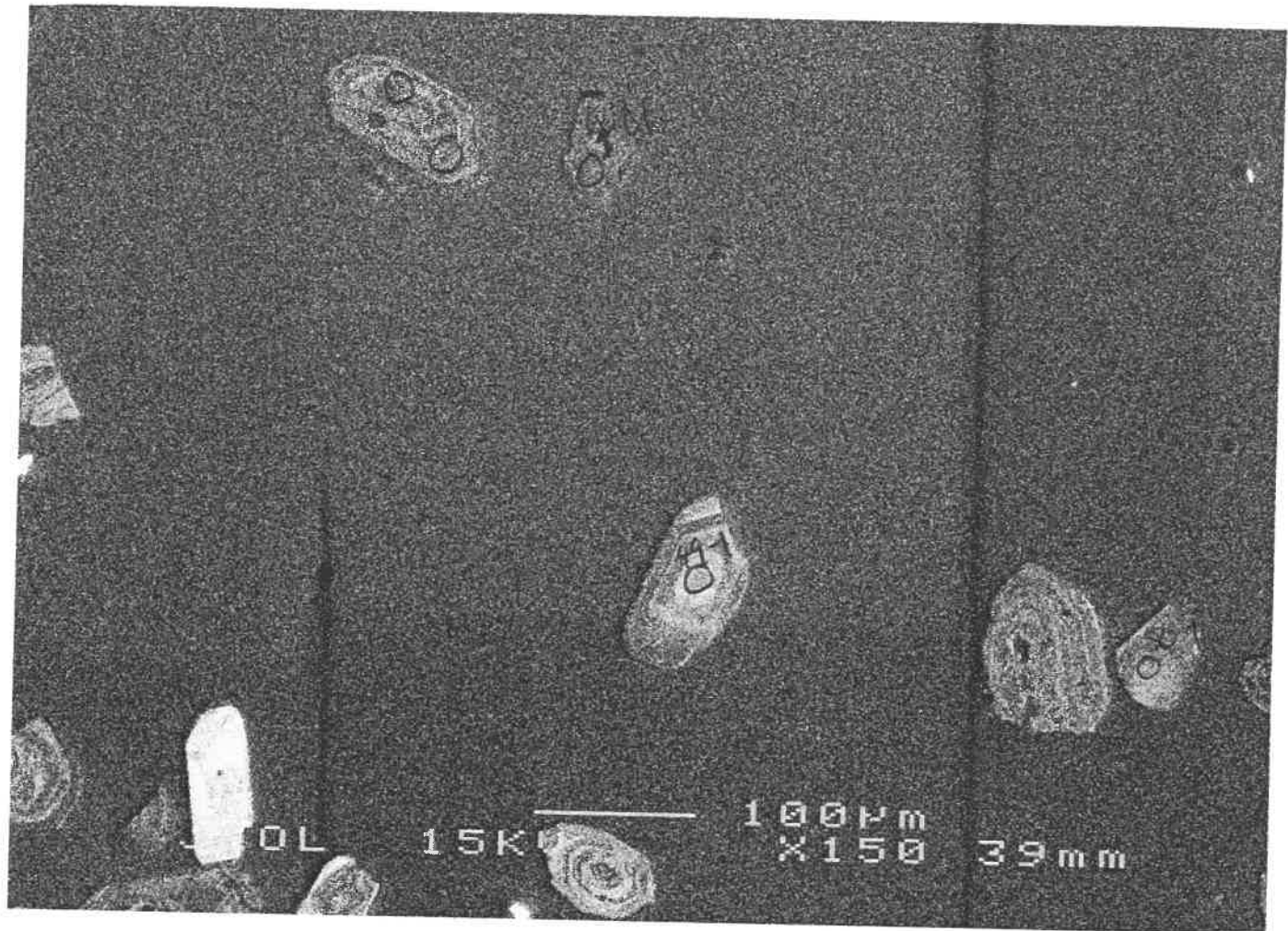
09/06

OS-89A

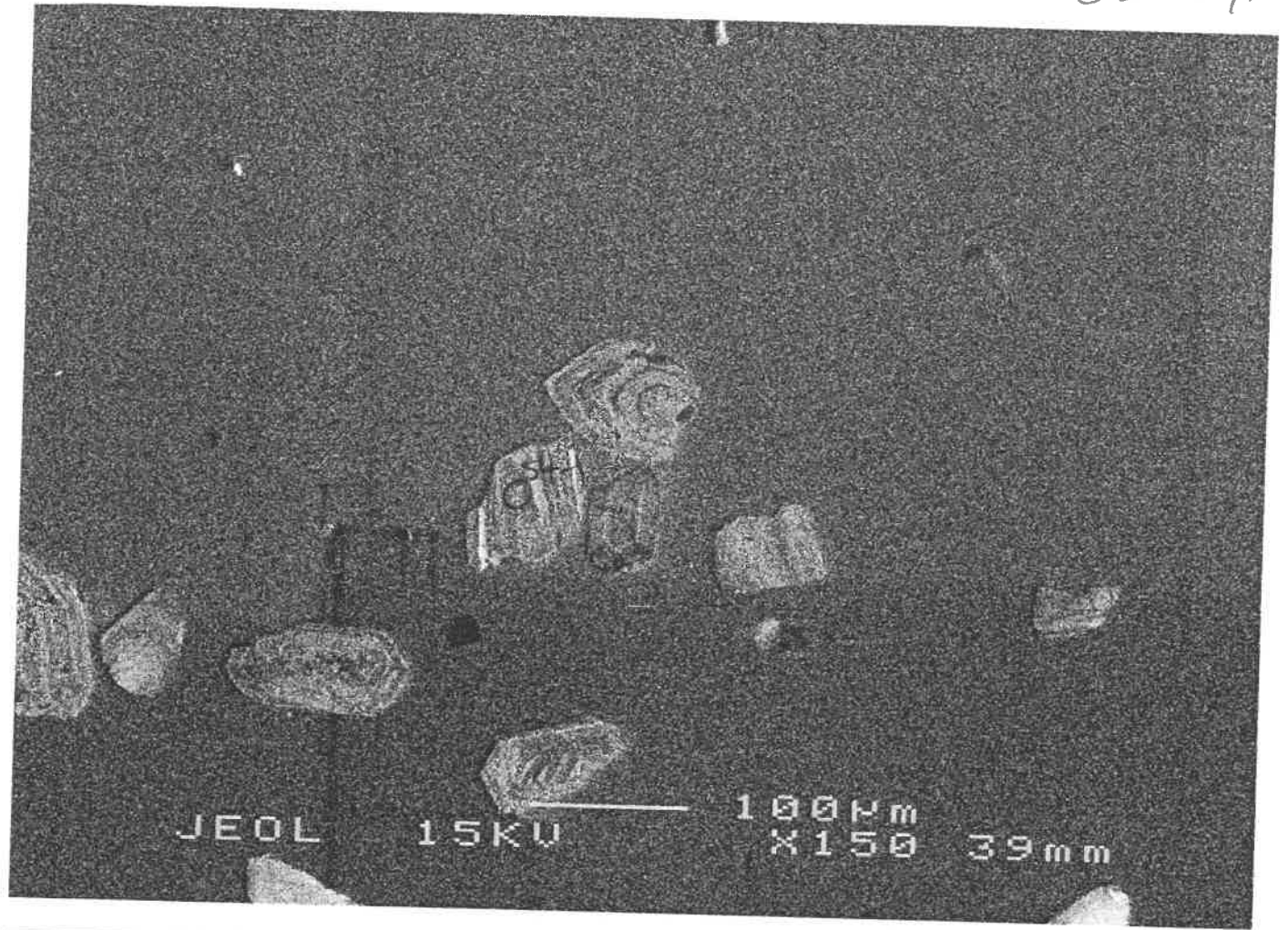


40

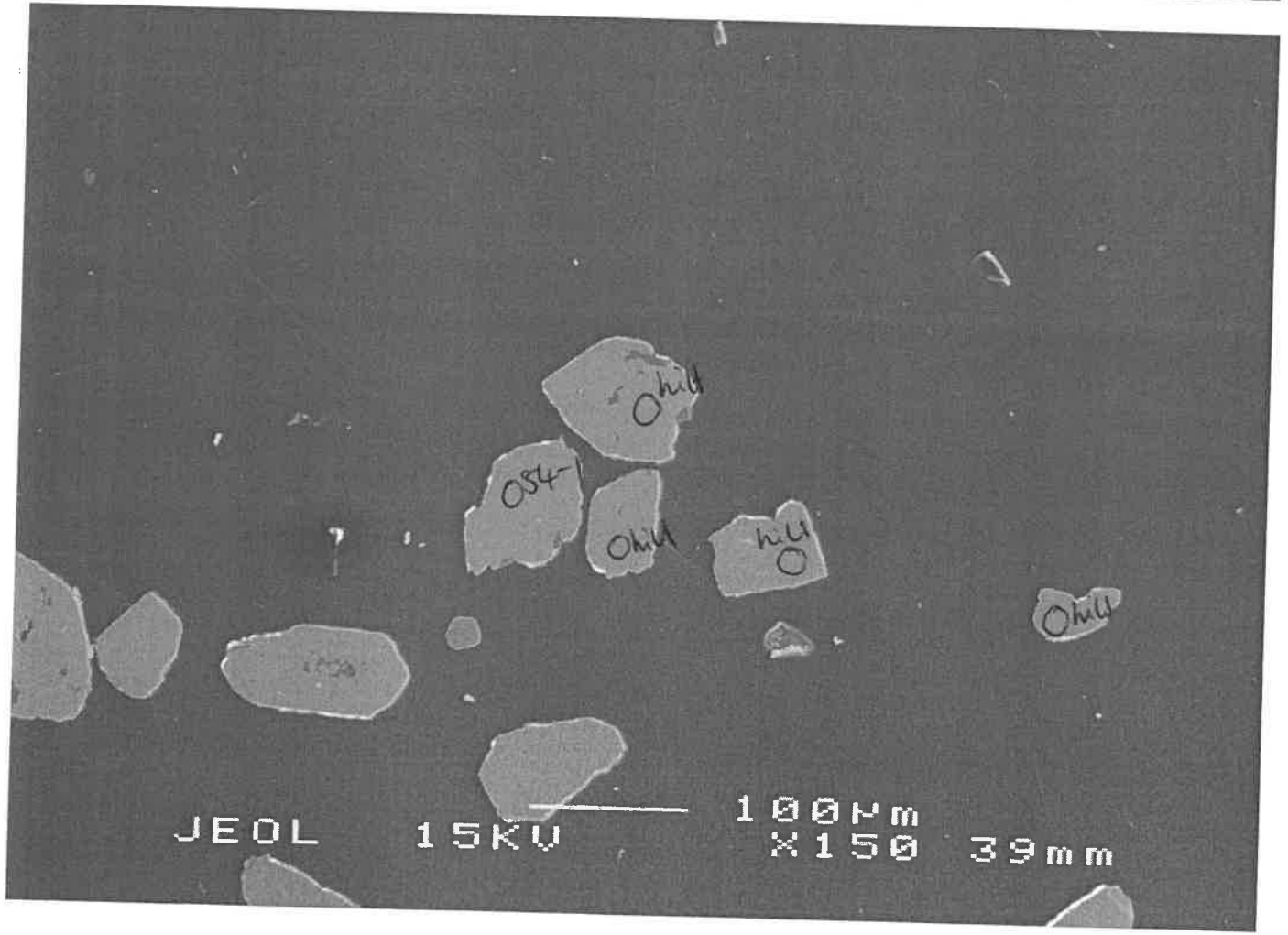


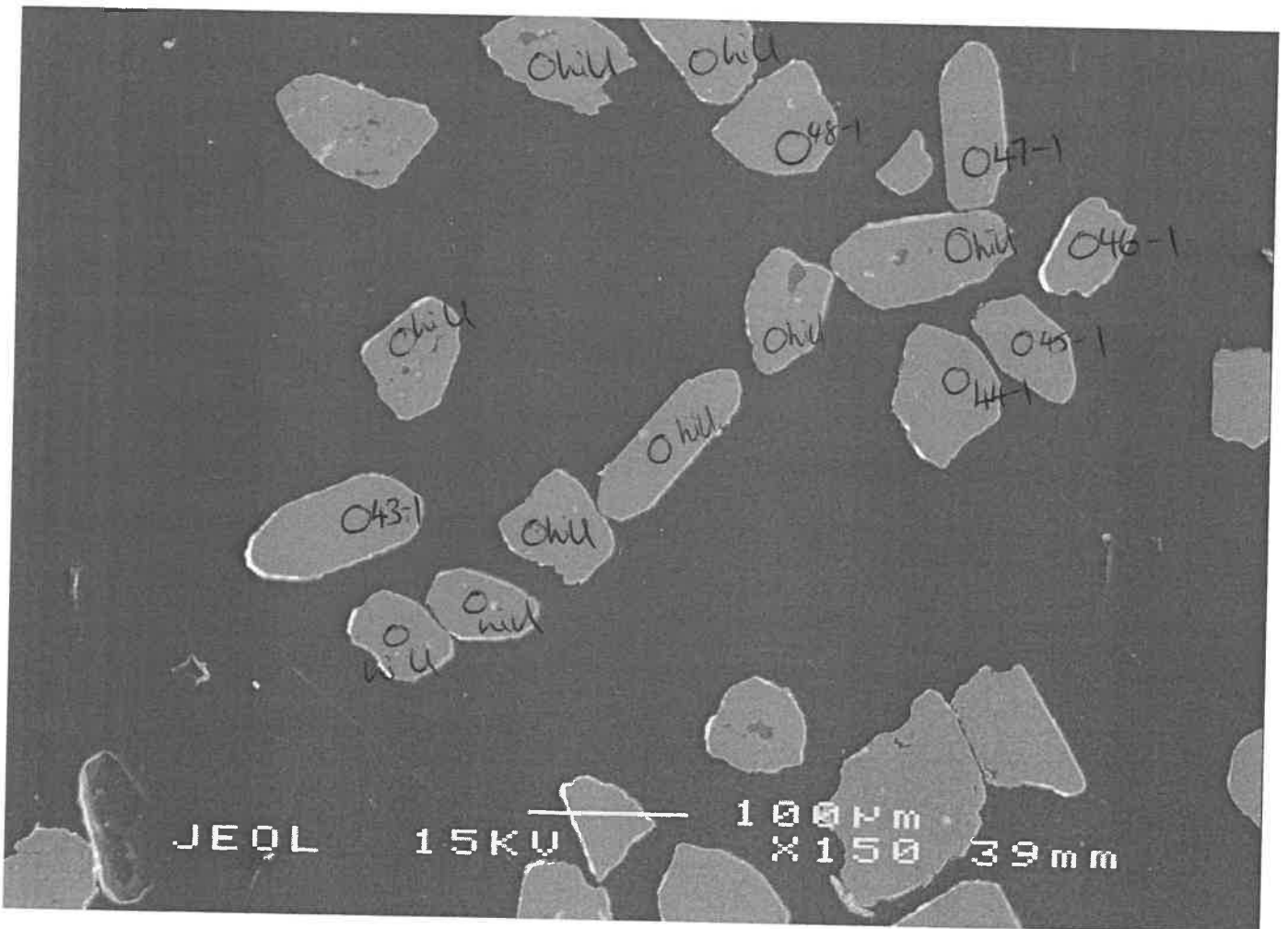
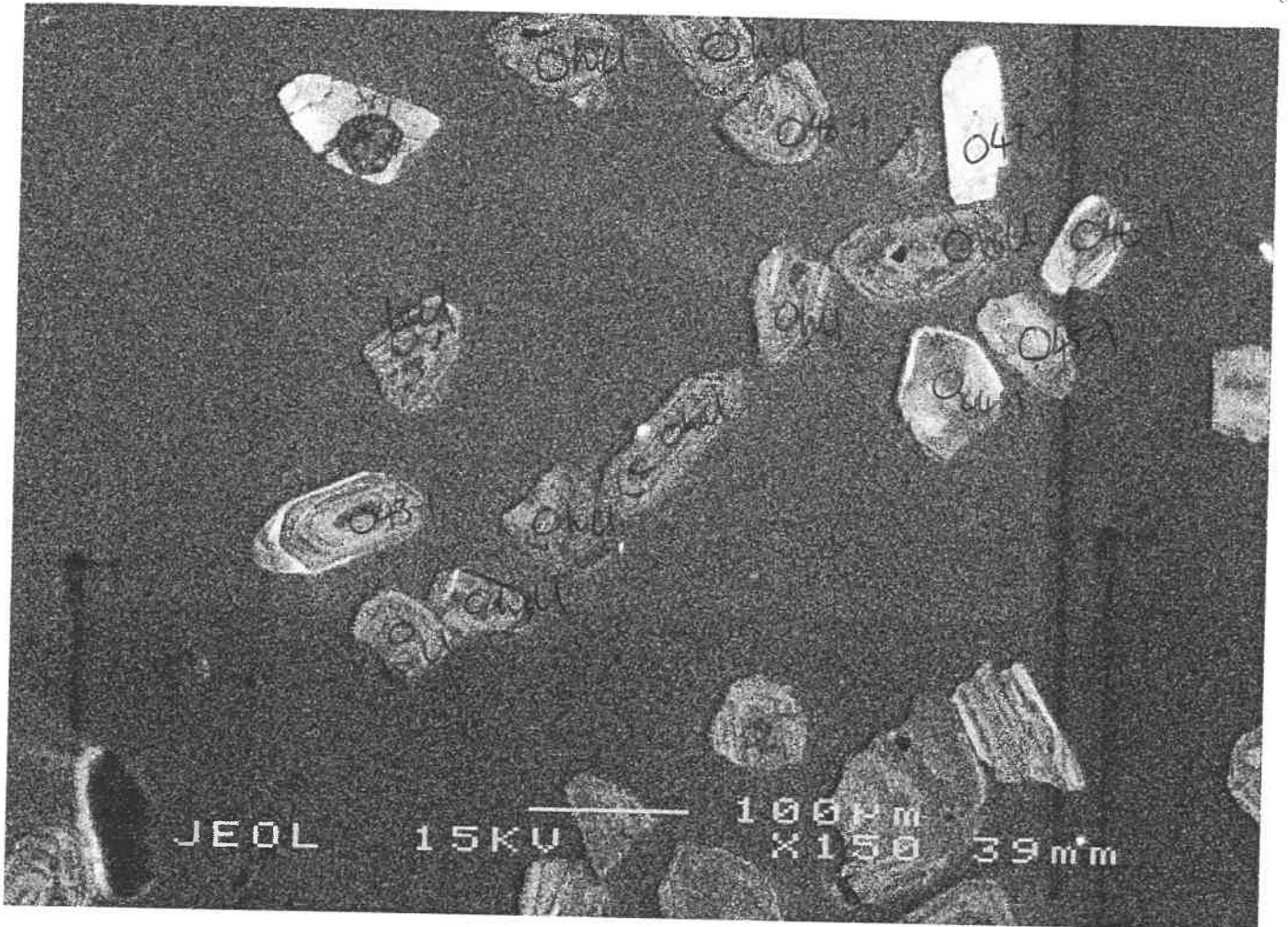


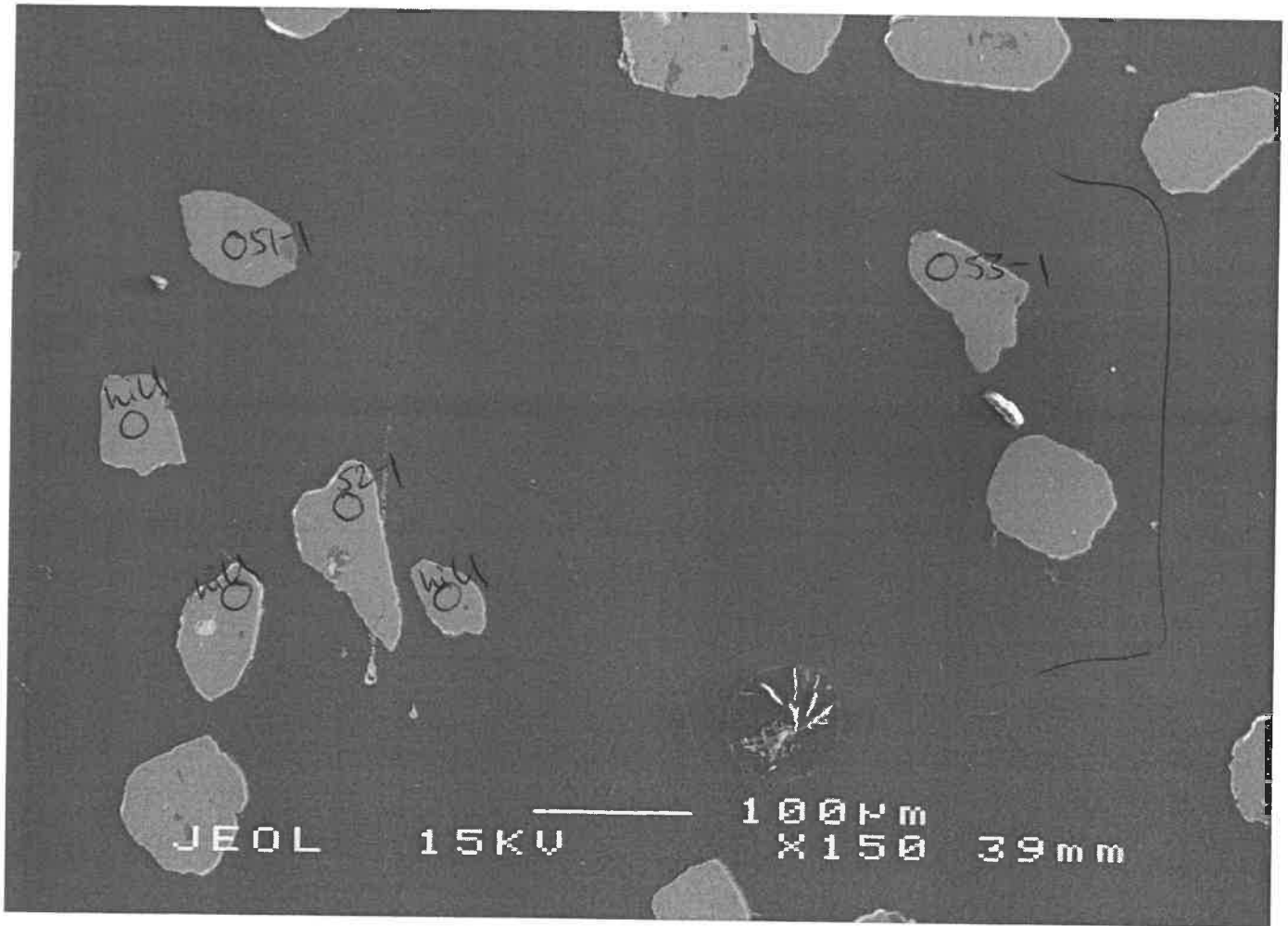
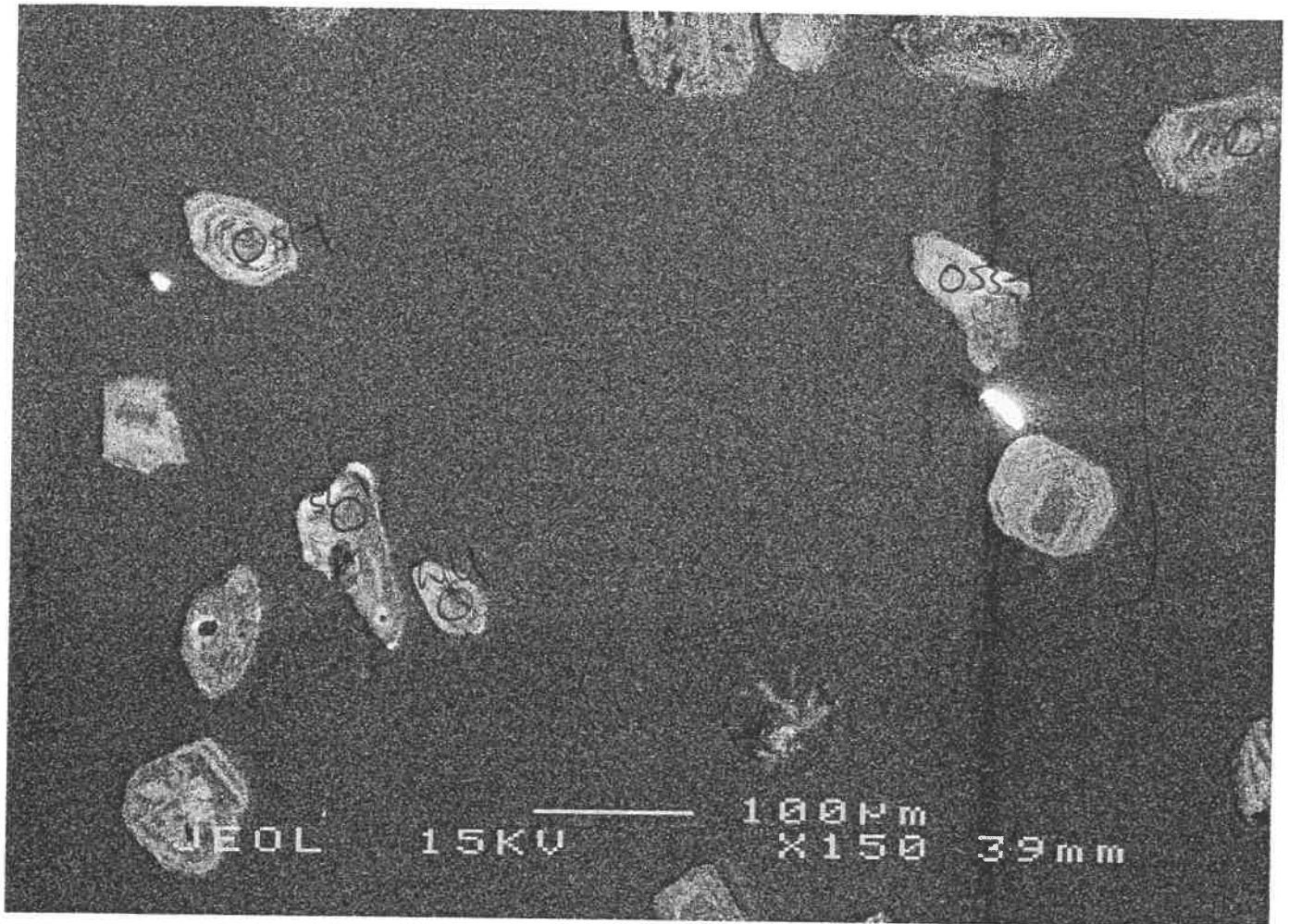
41



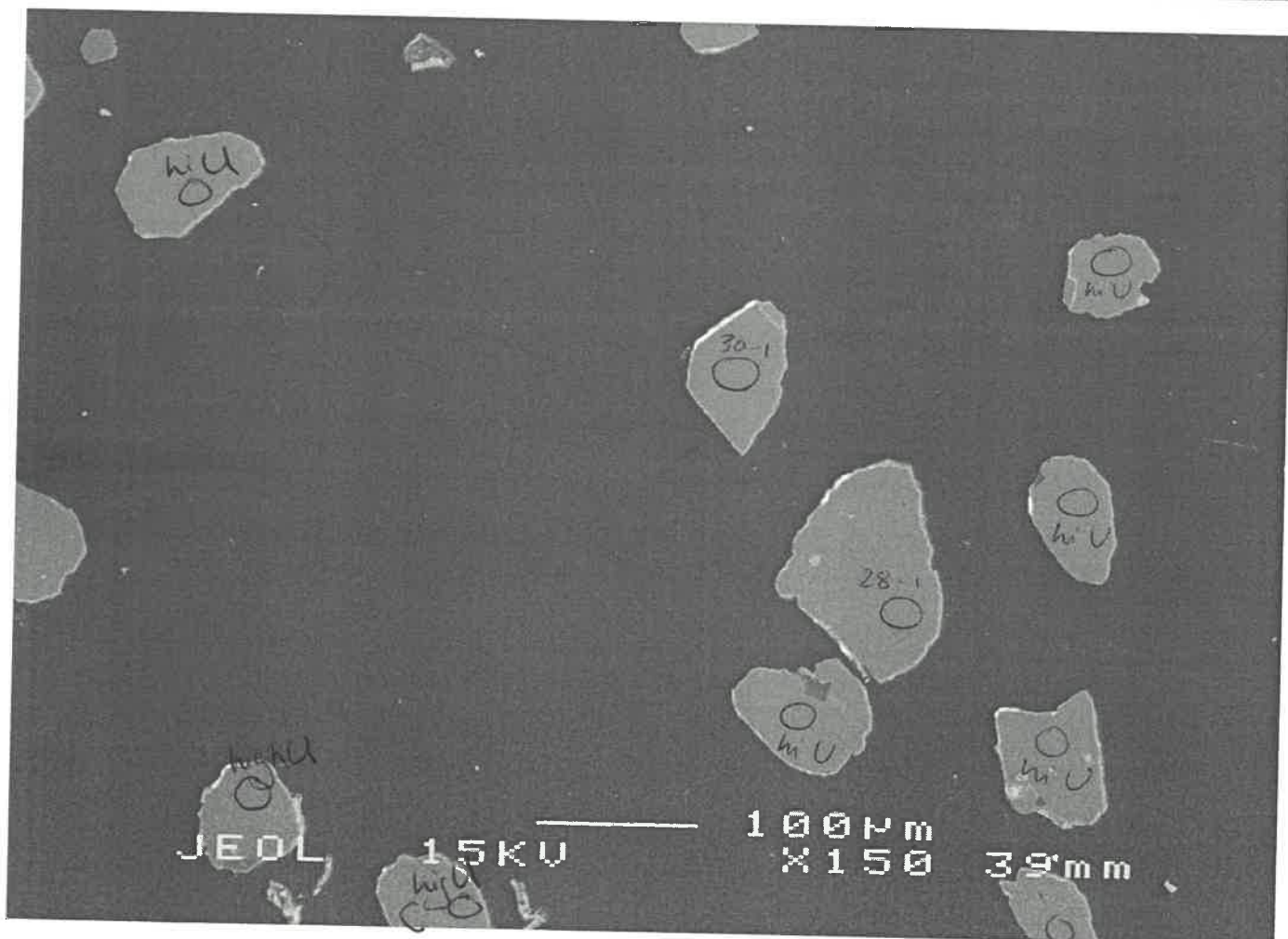
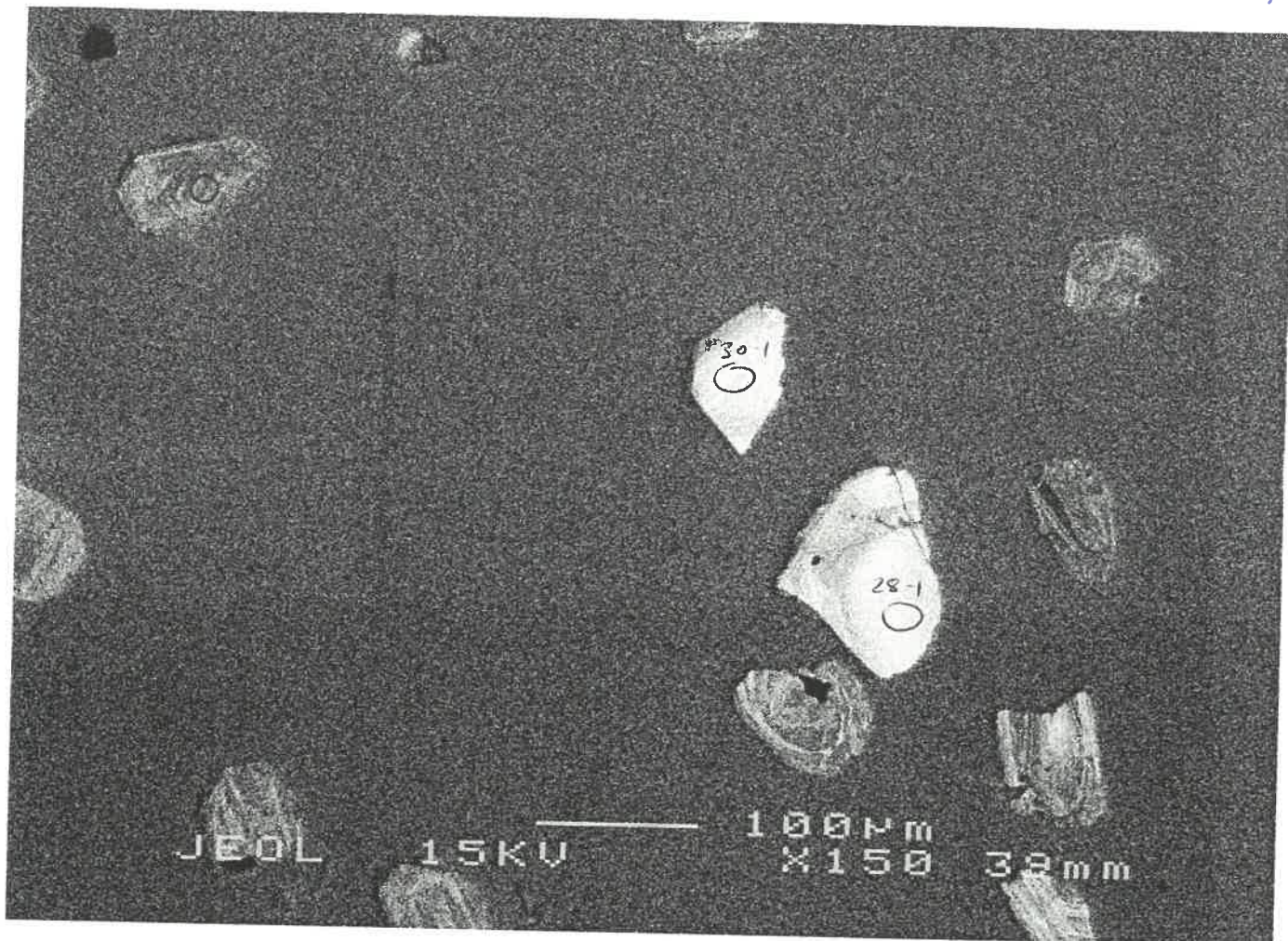
42





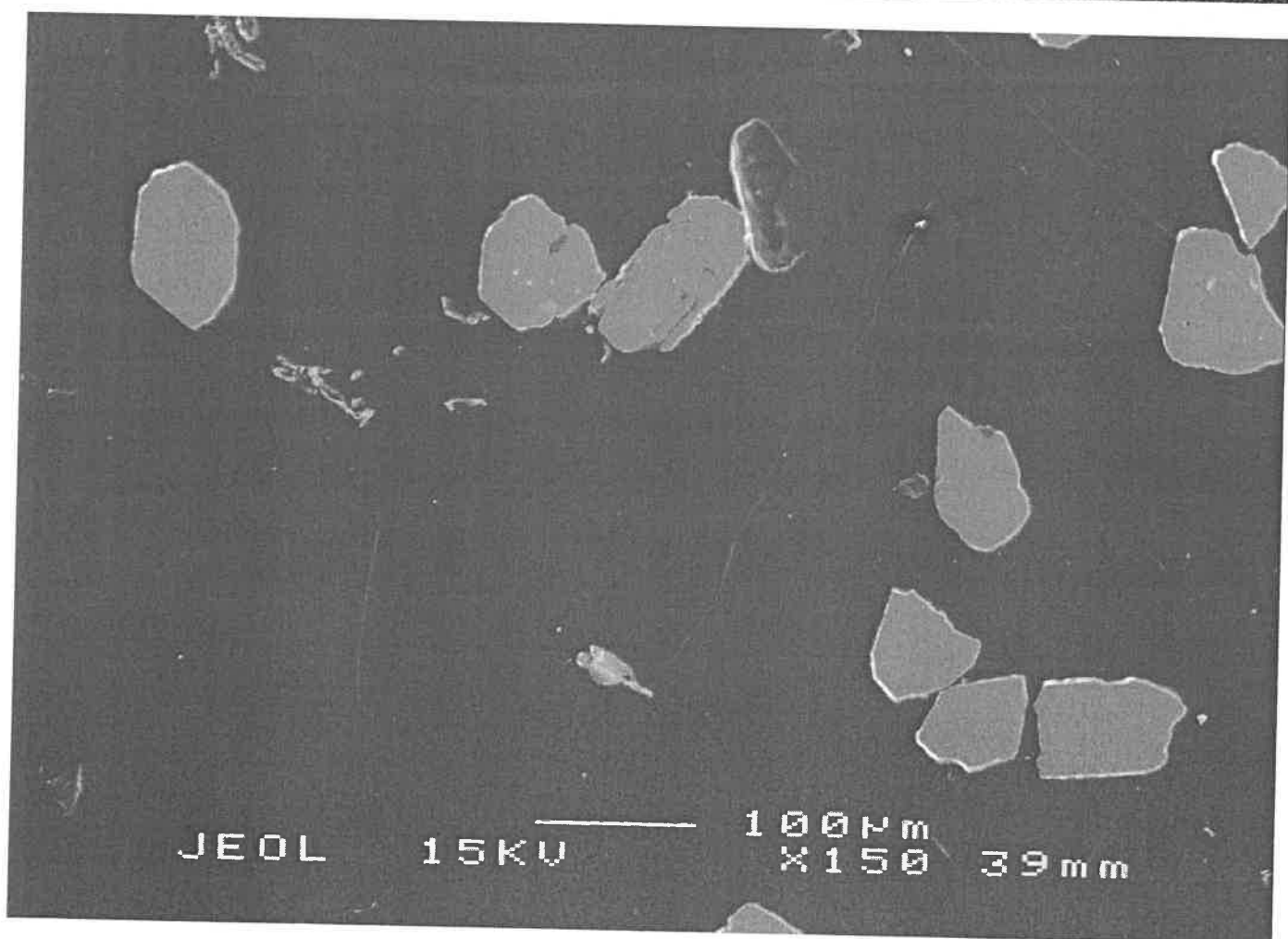
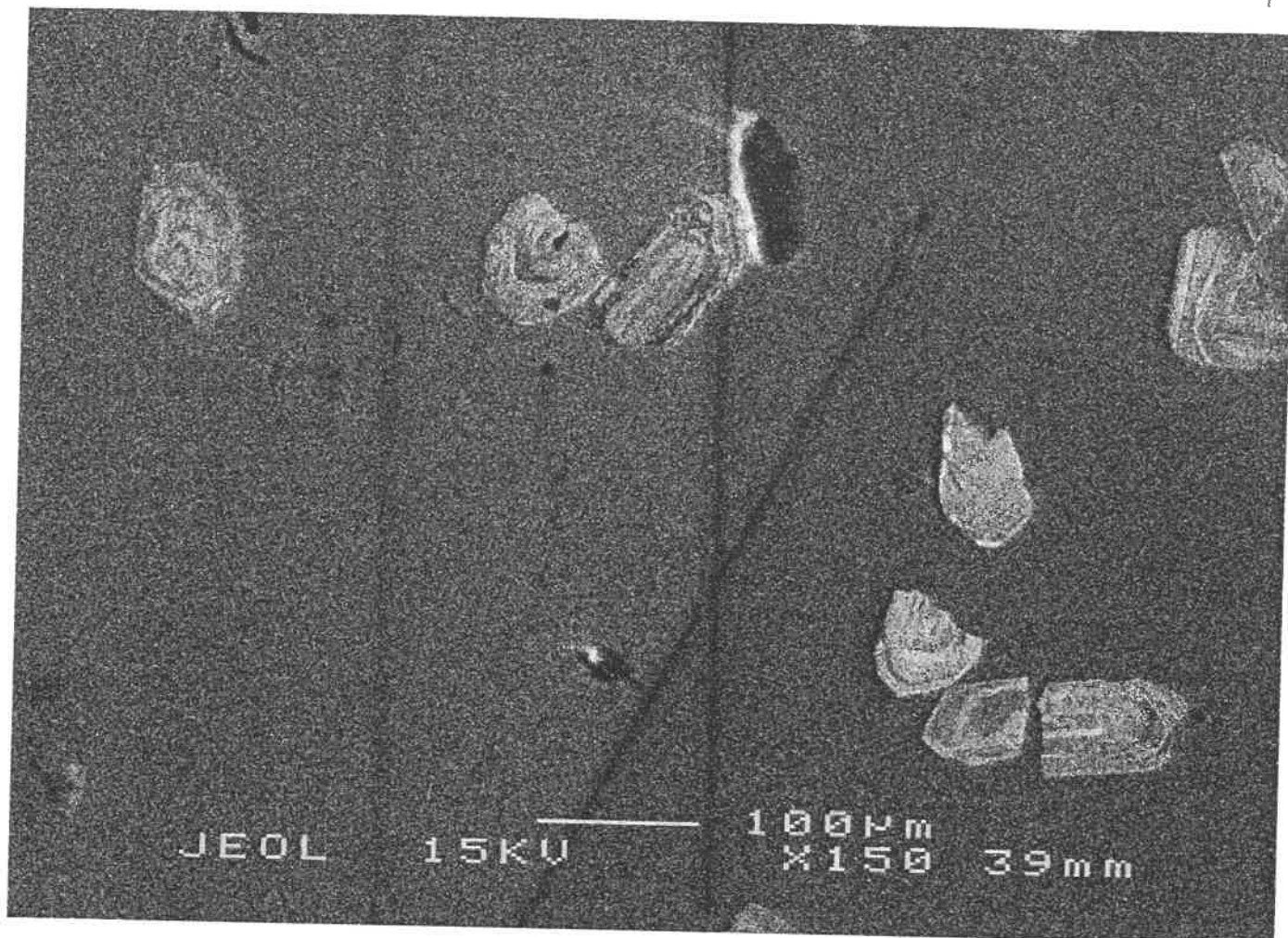


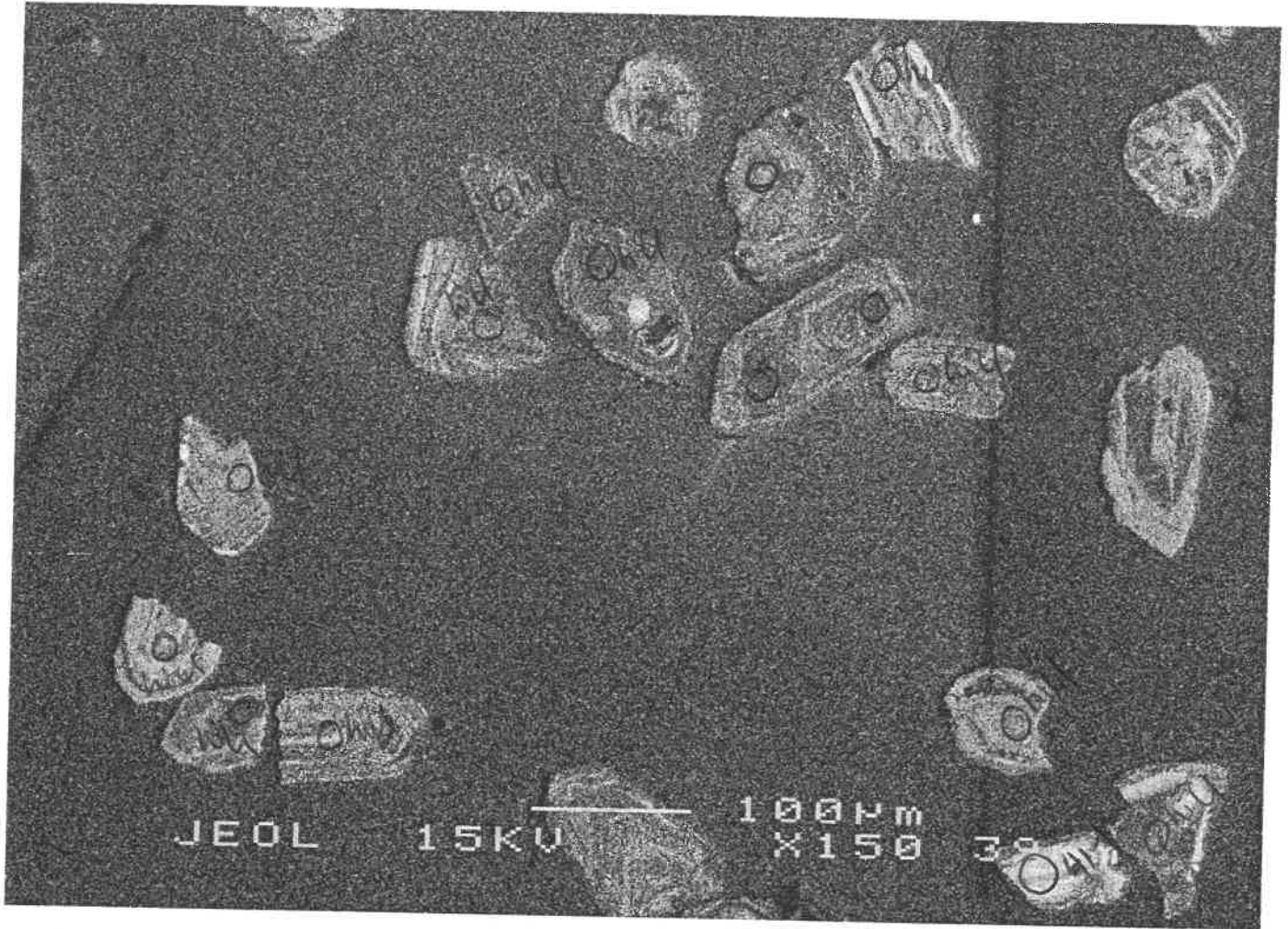
44



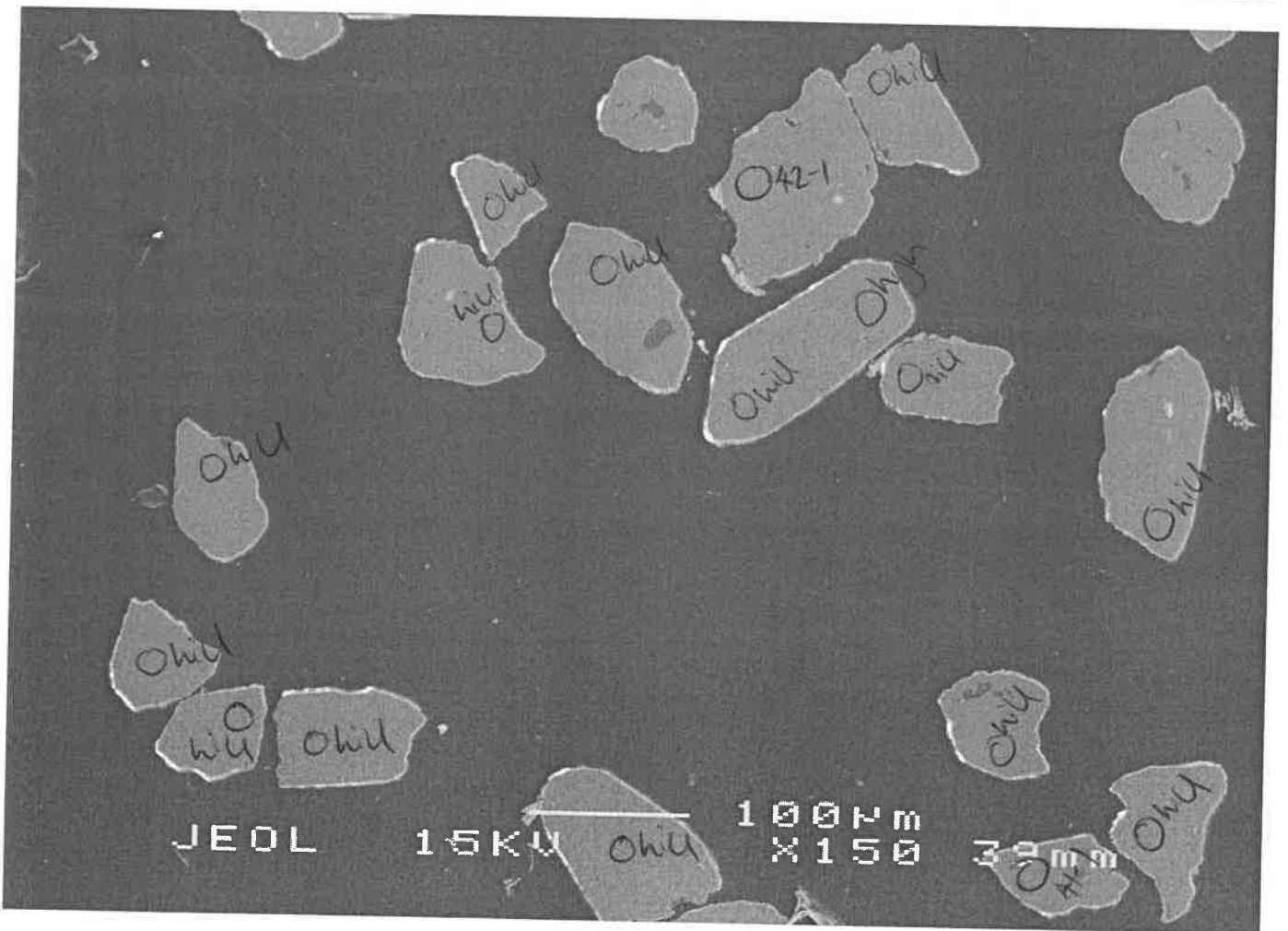
45

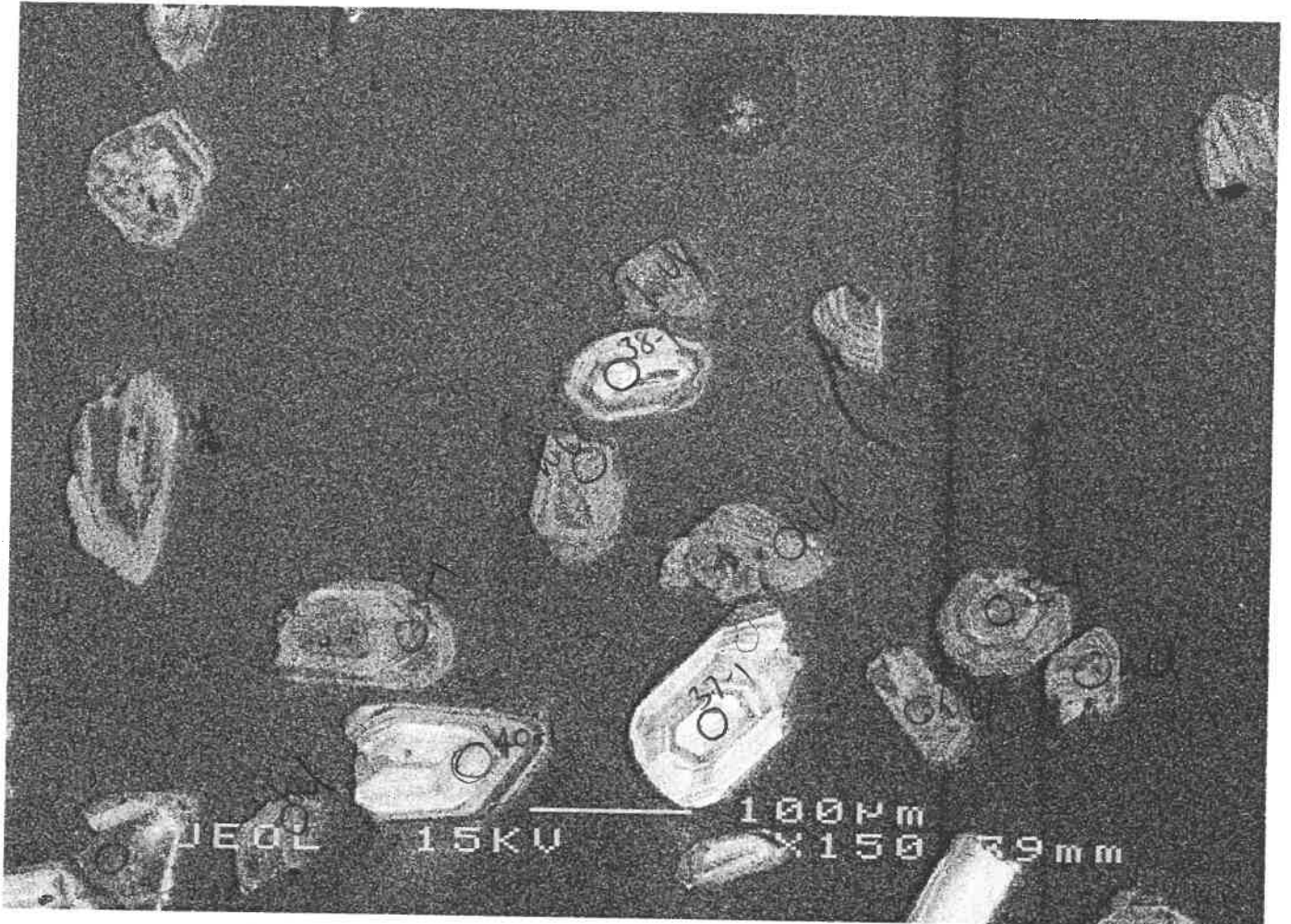
29-1



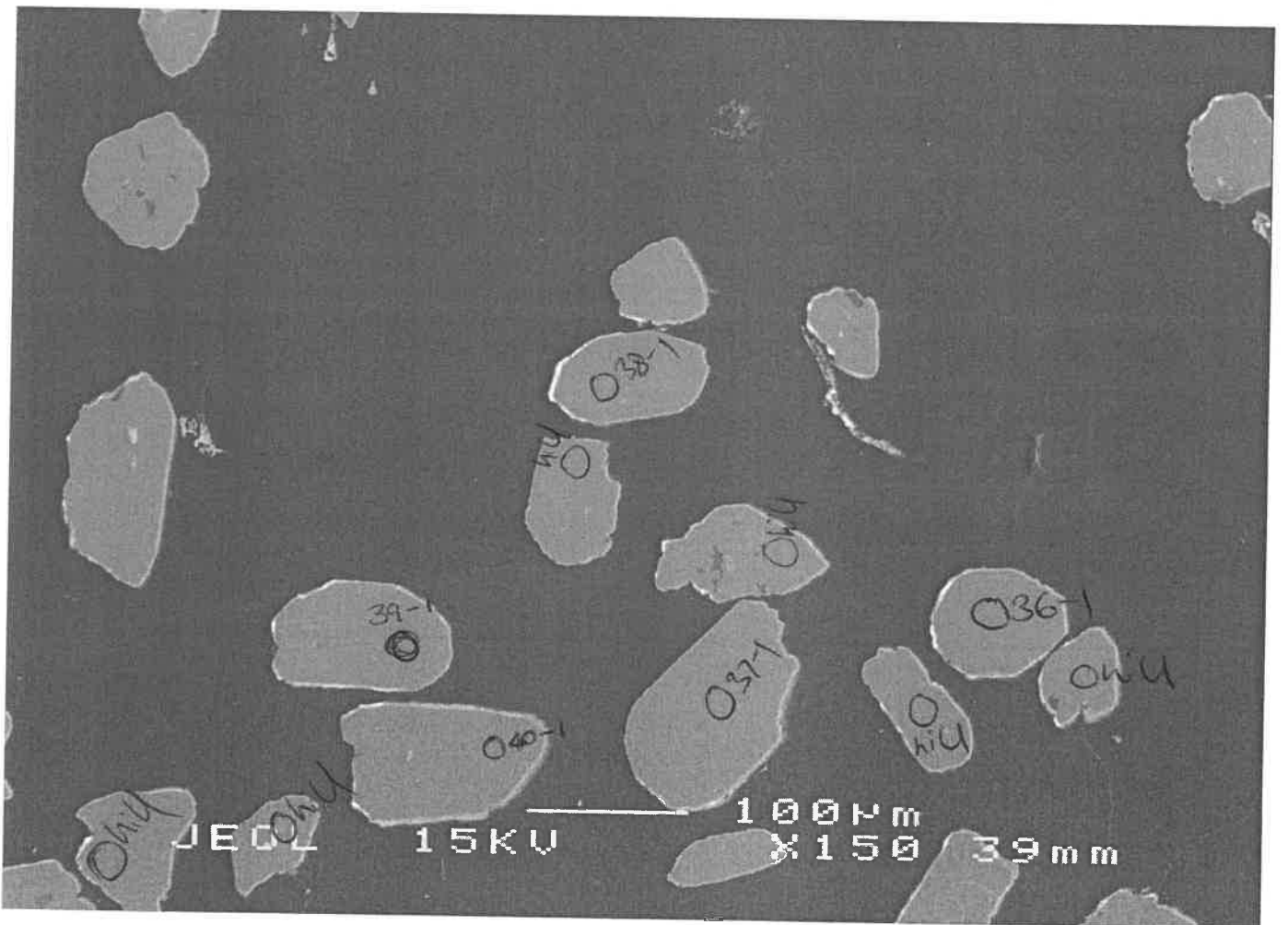


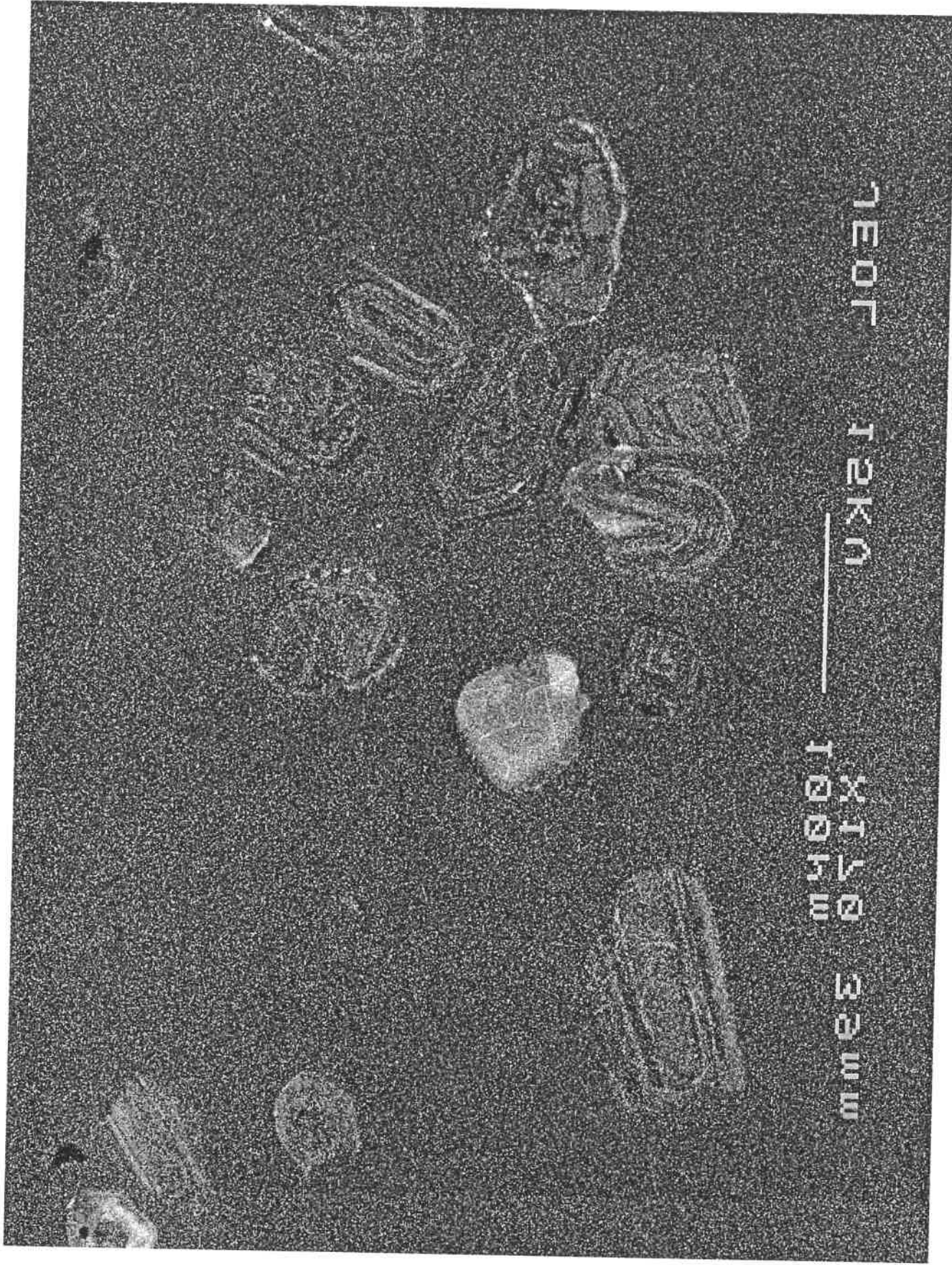
47





48





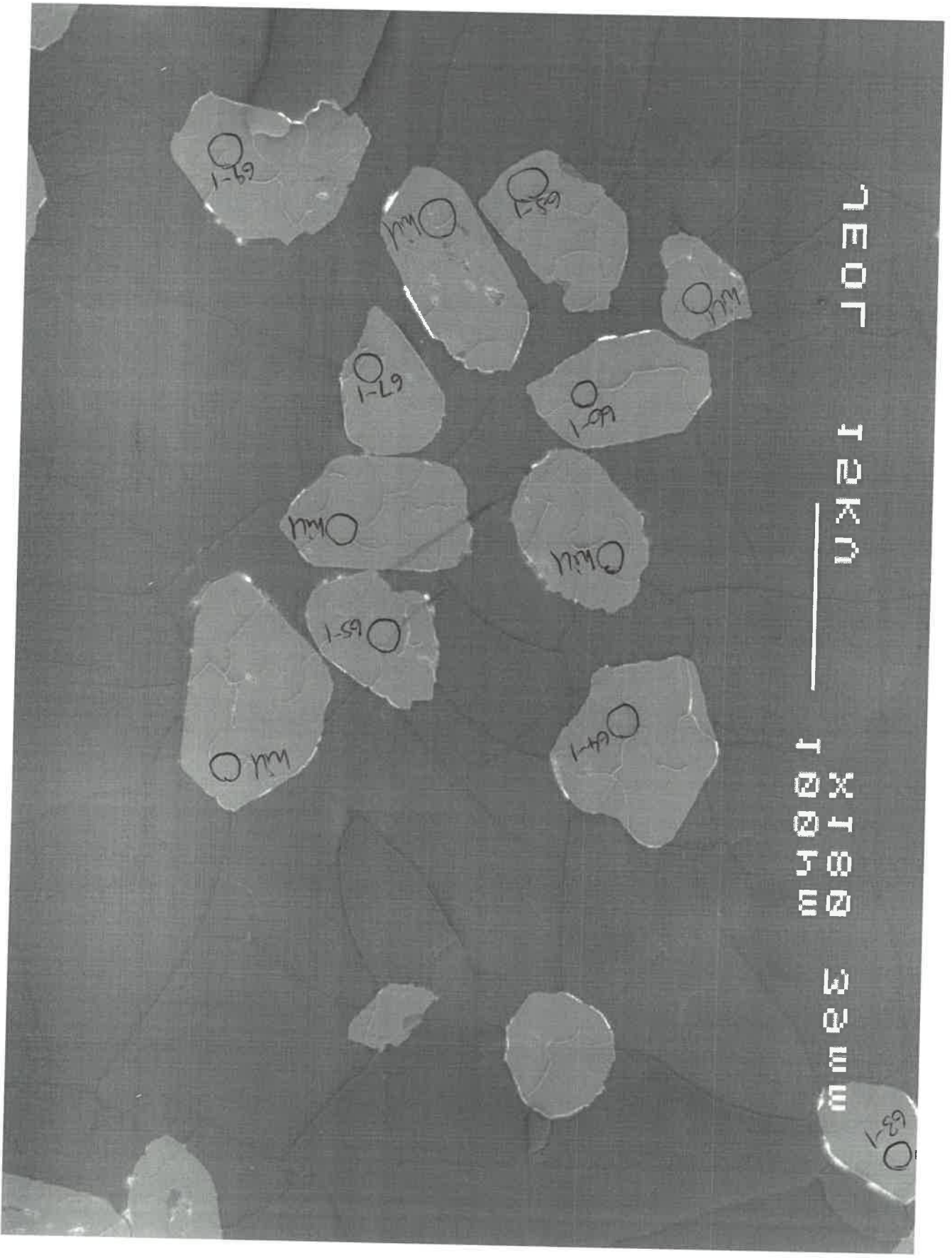
1E01

12K0

100K0

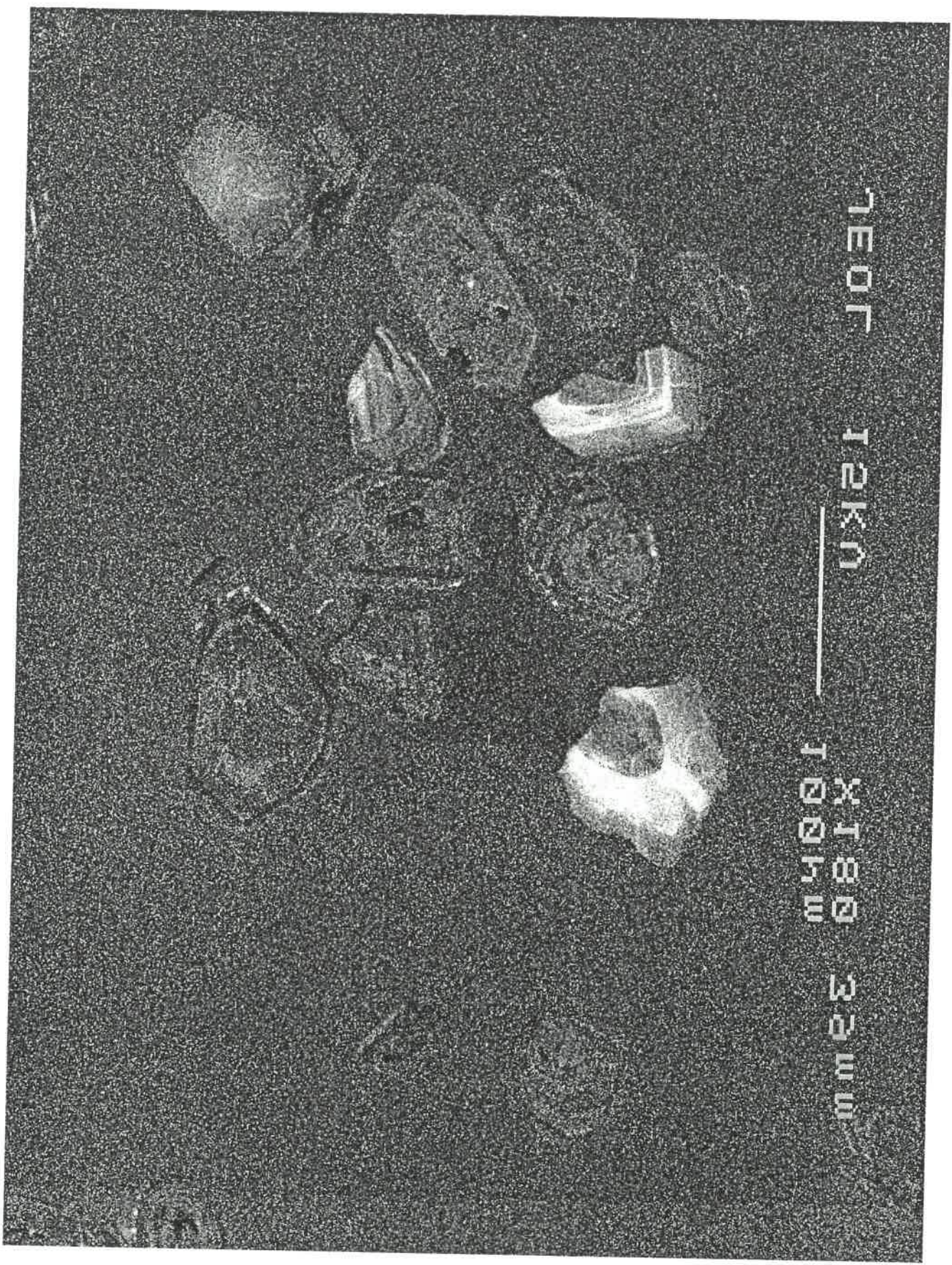
33W0

OS-89A
~~Indonesian~~



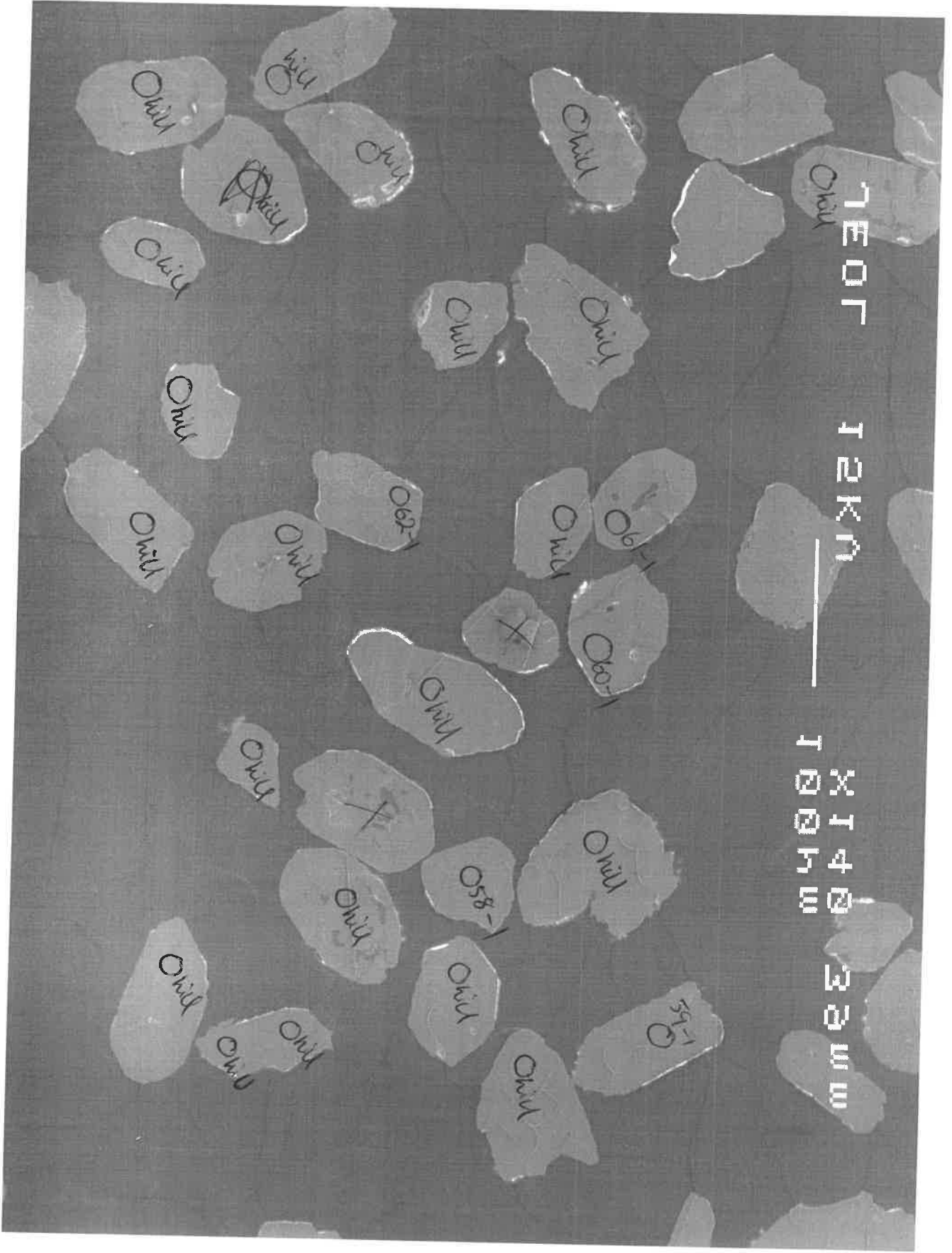
69

05-89A
Handwritten signature

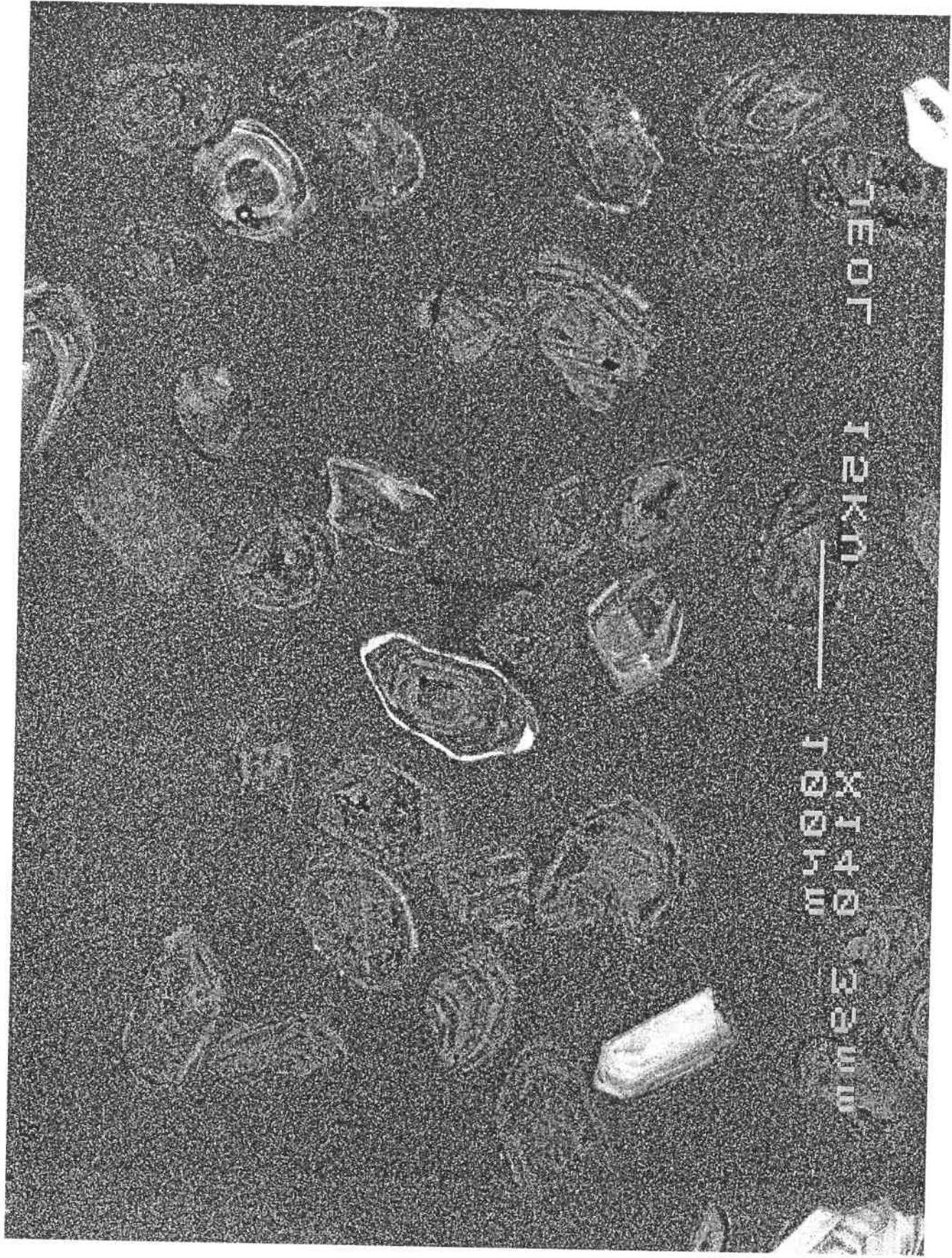


1E0T 12KN

X180 100KN 33mm



199-1
199-2
199-3
199-4
199-5
199-6
199-7
199-8
199-9
199-10
199-11
199-12
199-13
199-14
199-15
199-16
199-17
199-18
199-19
199-20
199-21
199-22
199-23
199-24
199-25
199-26
199-27
199-28
199-29
199-30
199-31
199-32
199-33
199-34
199-35
199-36
199-37
199-38
199-39
199-40
199-41
199-42
199-43
199-44
199-45
199-46
199-47
199-48
199-49
199-50

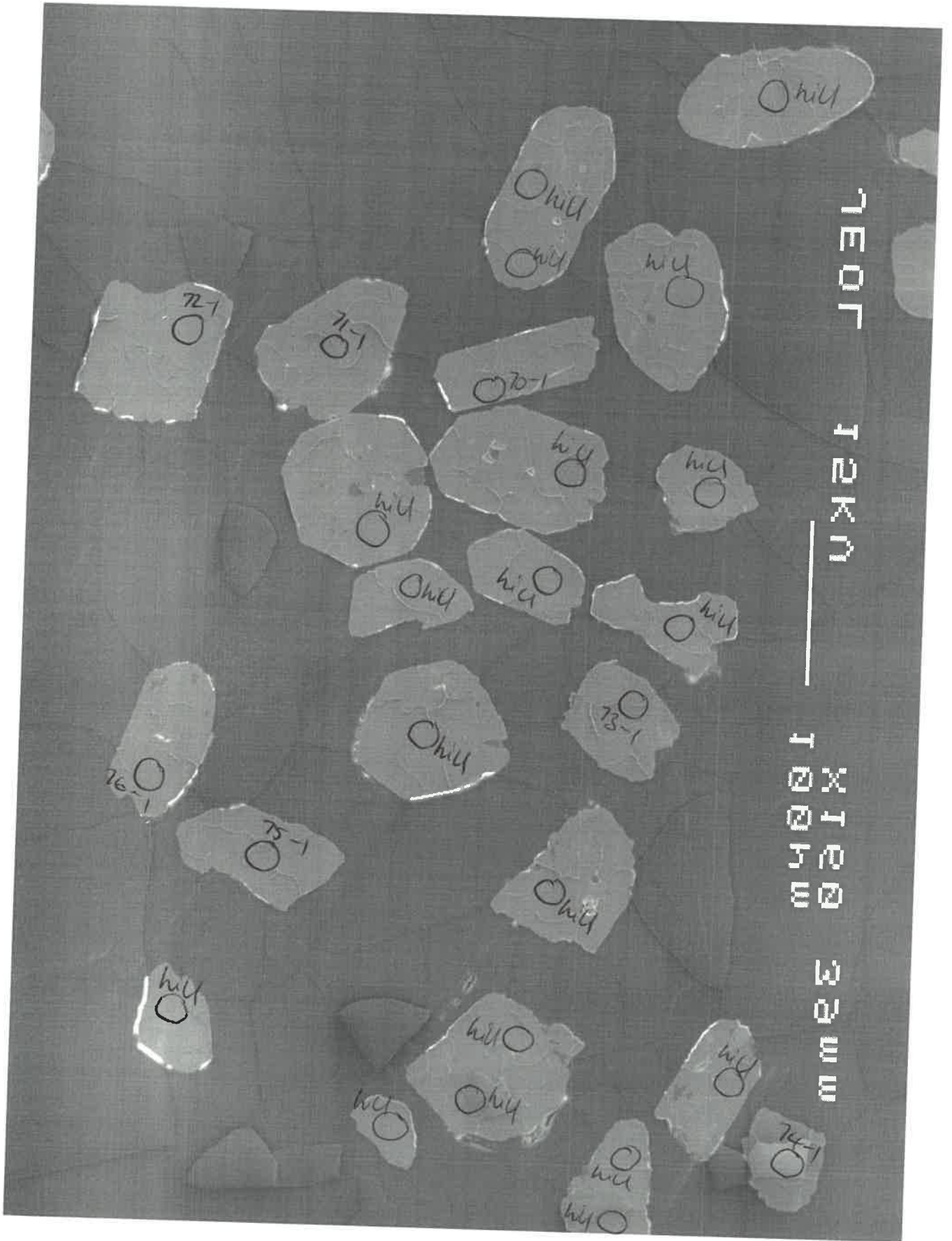


TEOT 12KN

X140 33um
1004W

(10)

05-89,
H. H. H.



05-891
Pensa

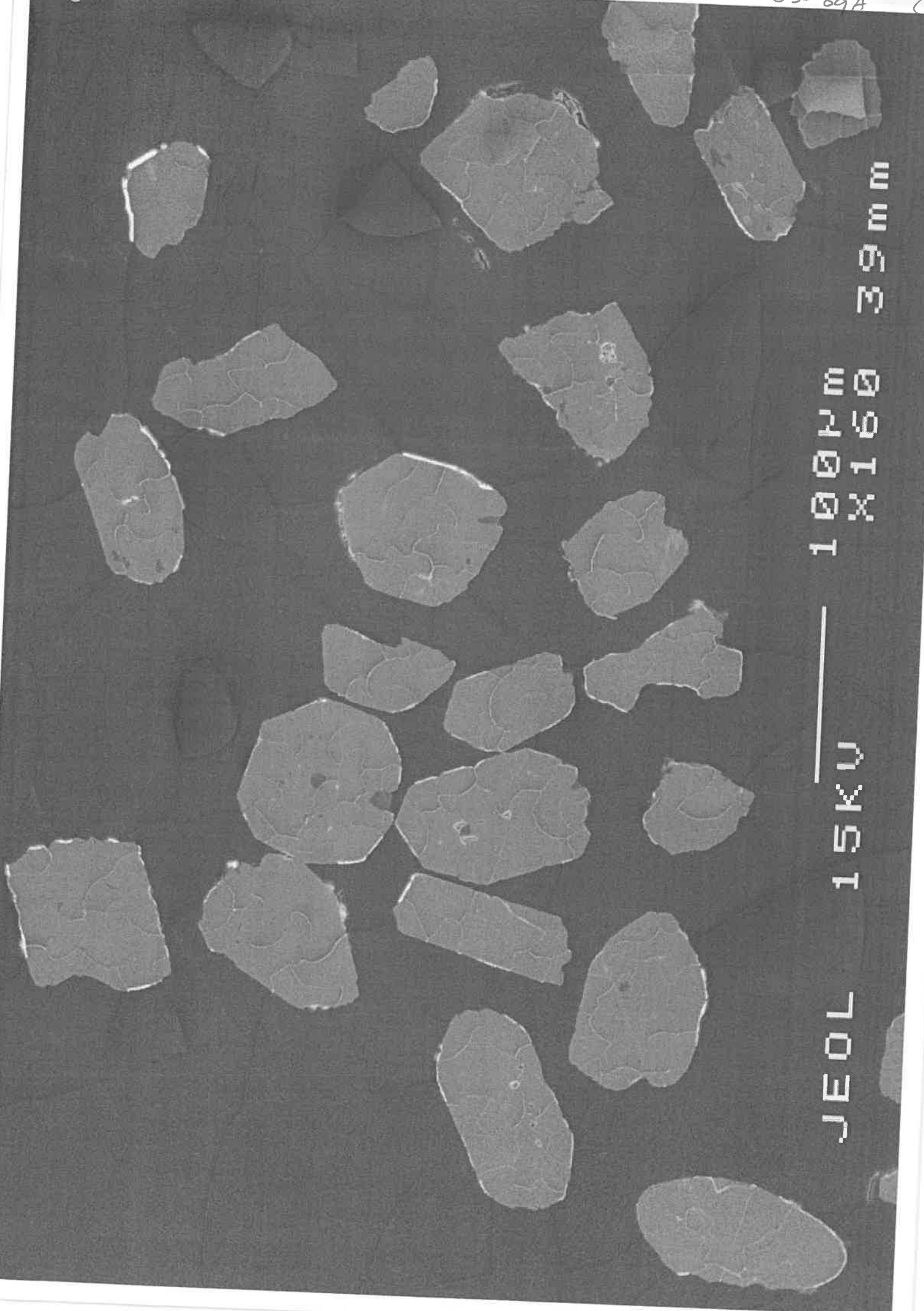


ТЕОТ

12KN

100KN

22WU



WSS 39mm

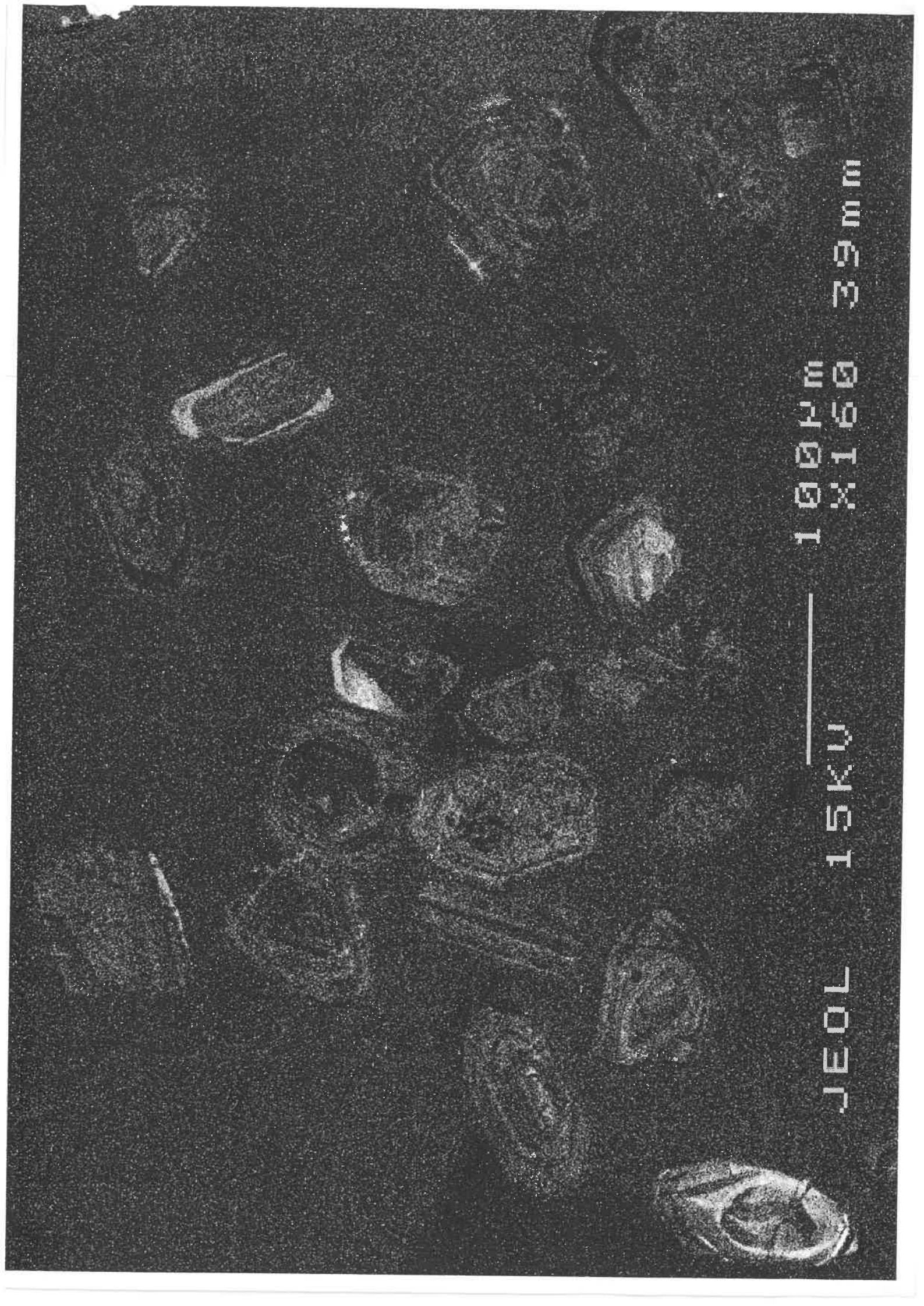
100X 160

JEOL 15KV

7037

1004M 39mm

15KU 703R

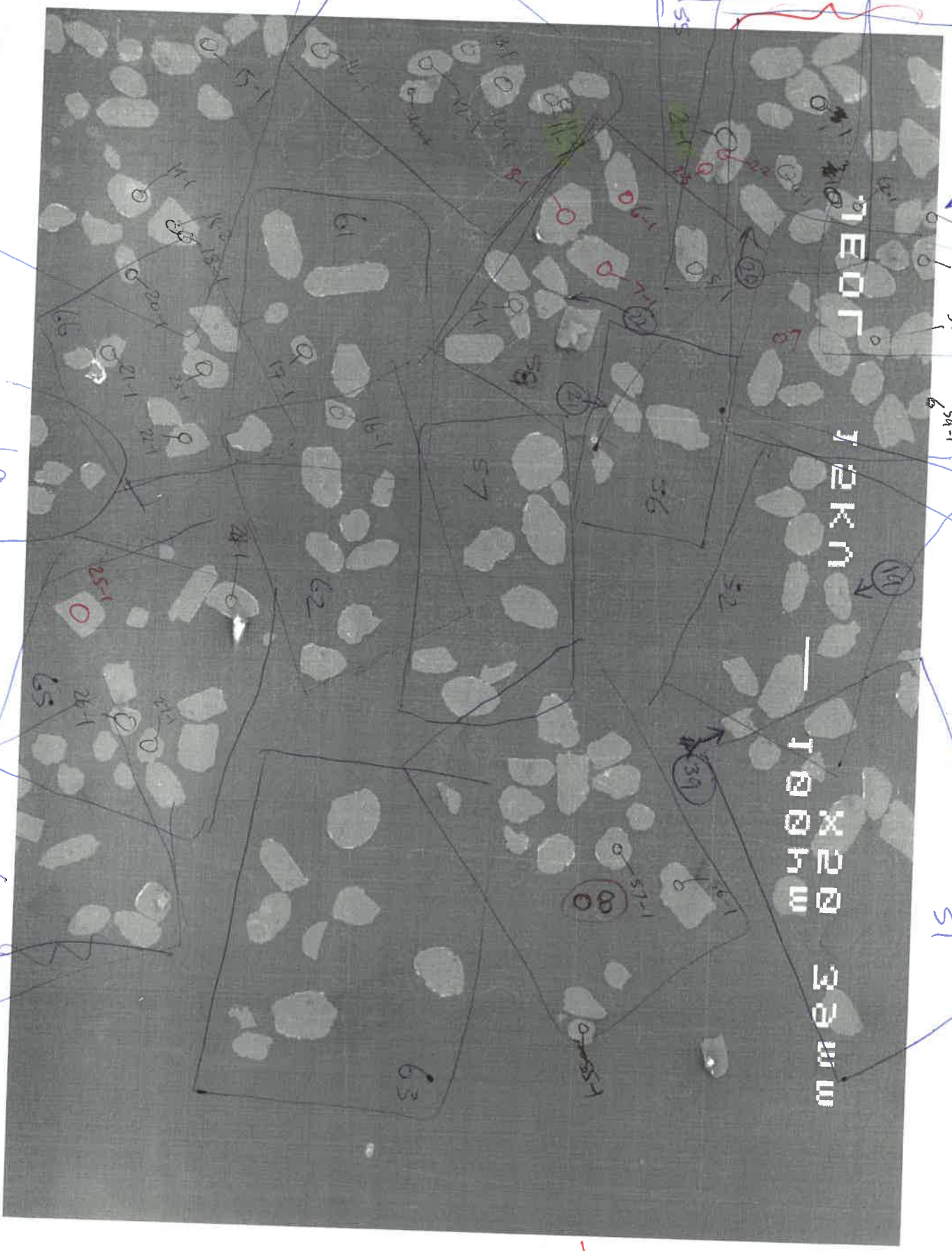


168-50

69

69

07



61-1

60-1

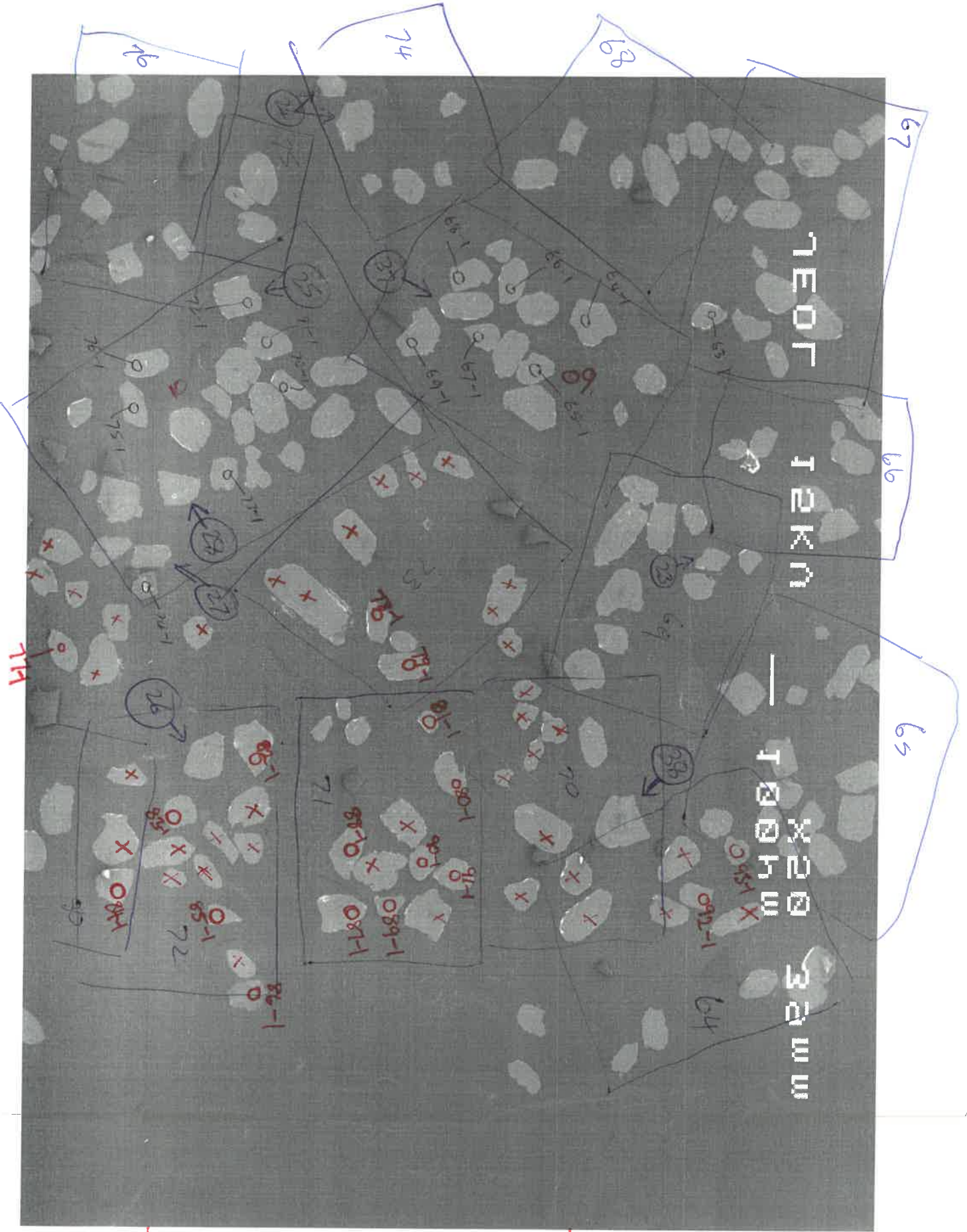
58-1

54-1

51

(67)

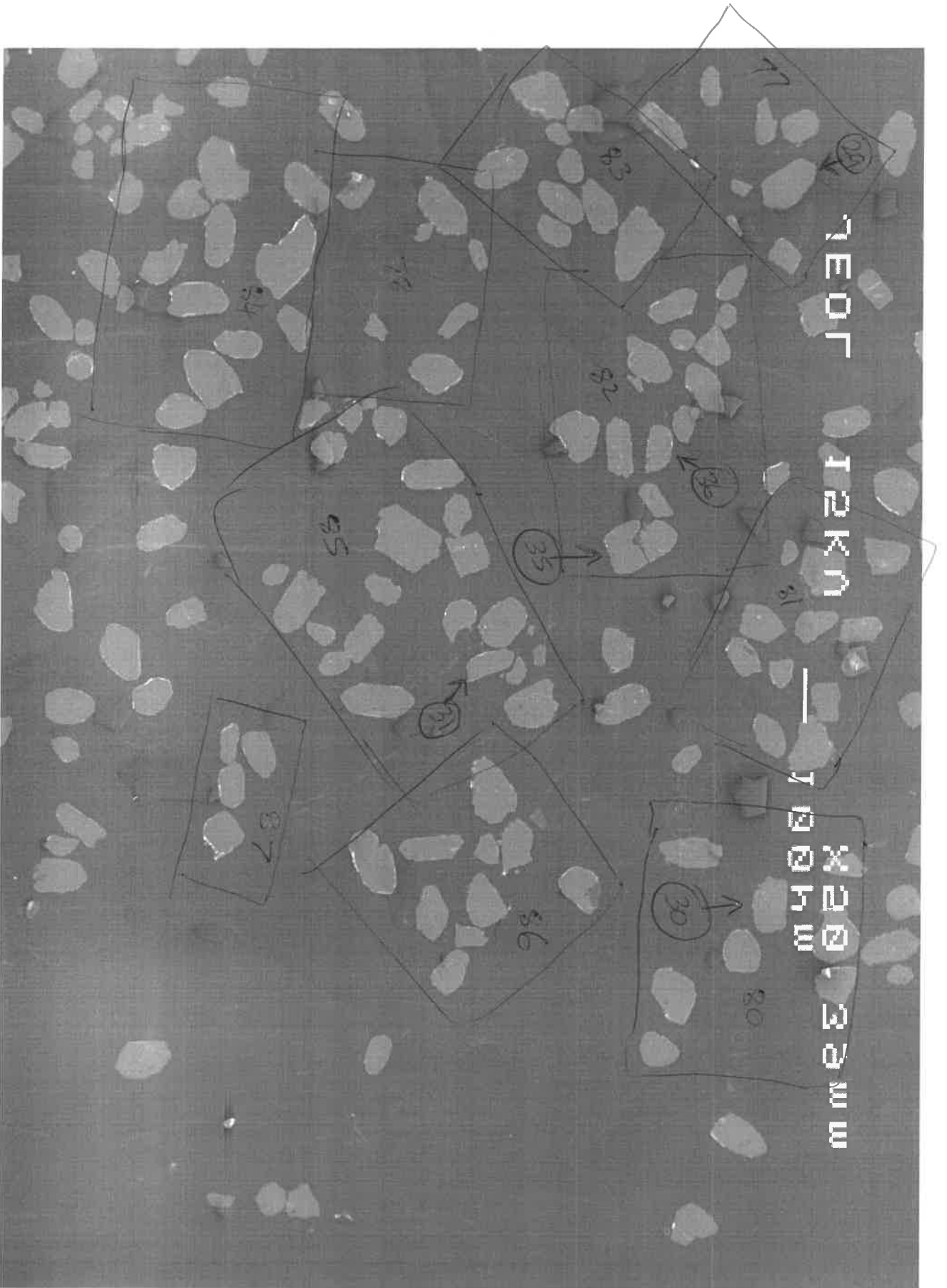
(68)

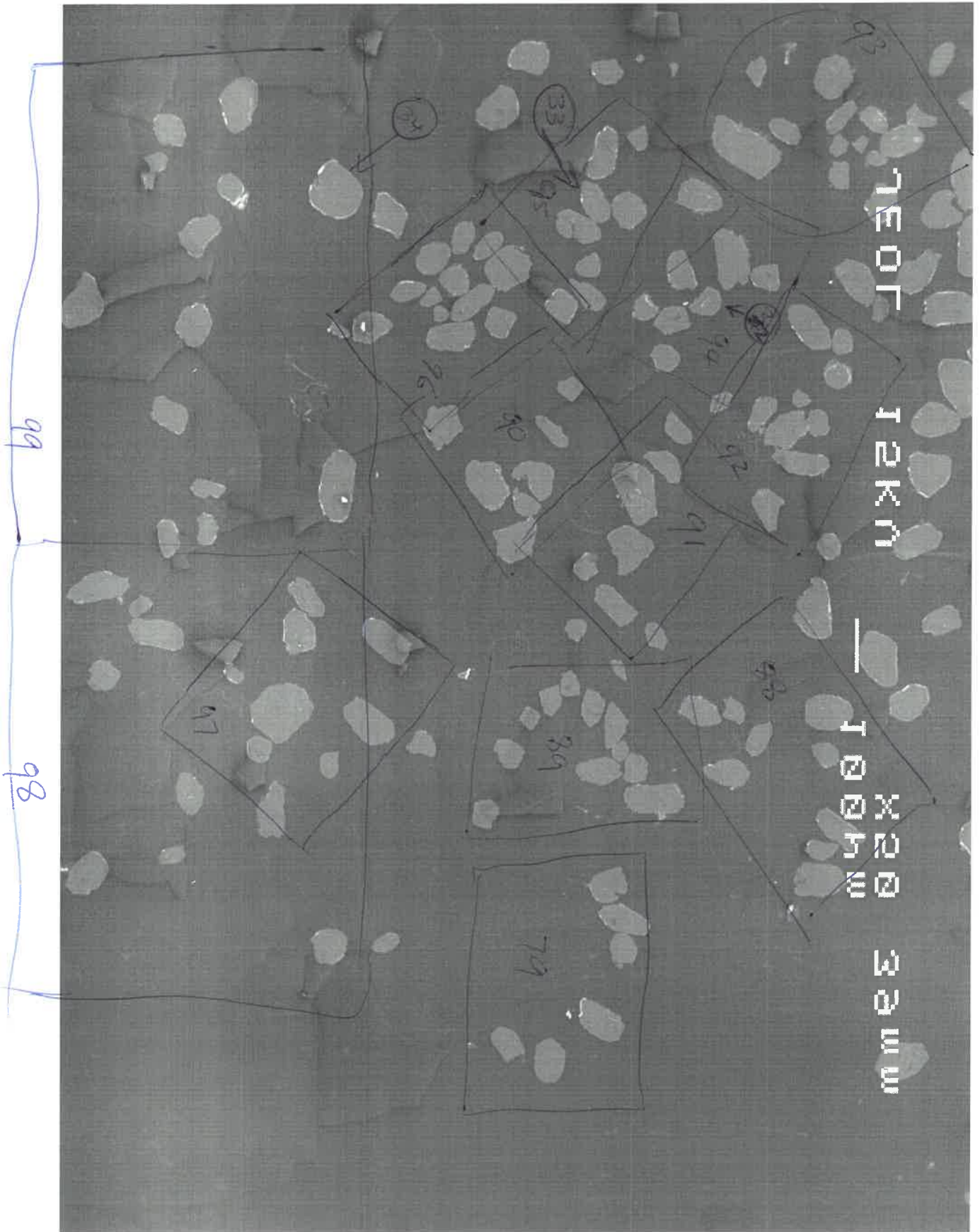


(10)

x high v

(09)

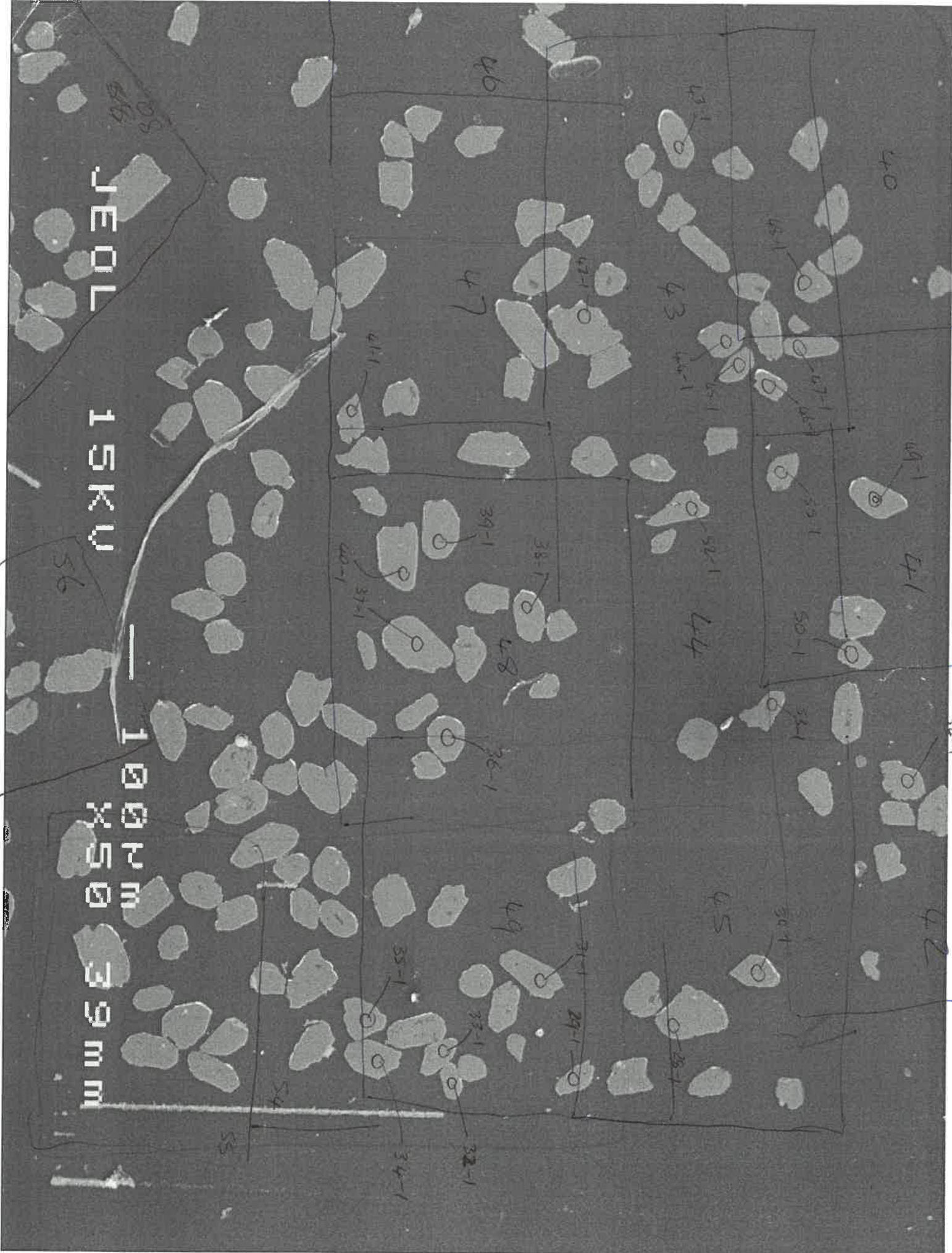




JEOL 15KV

100µm

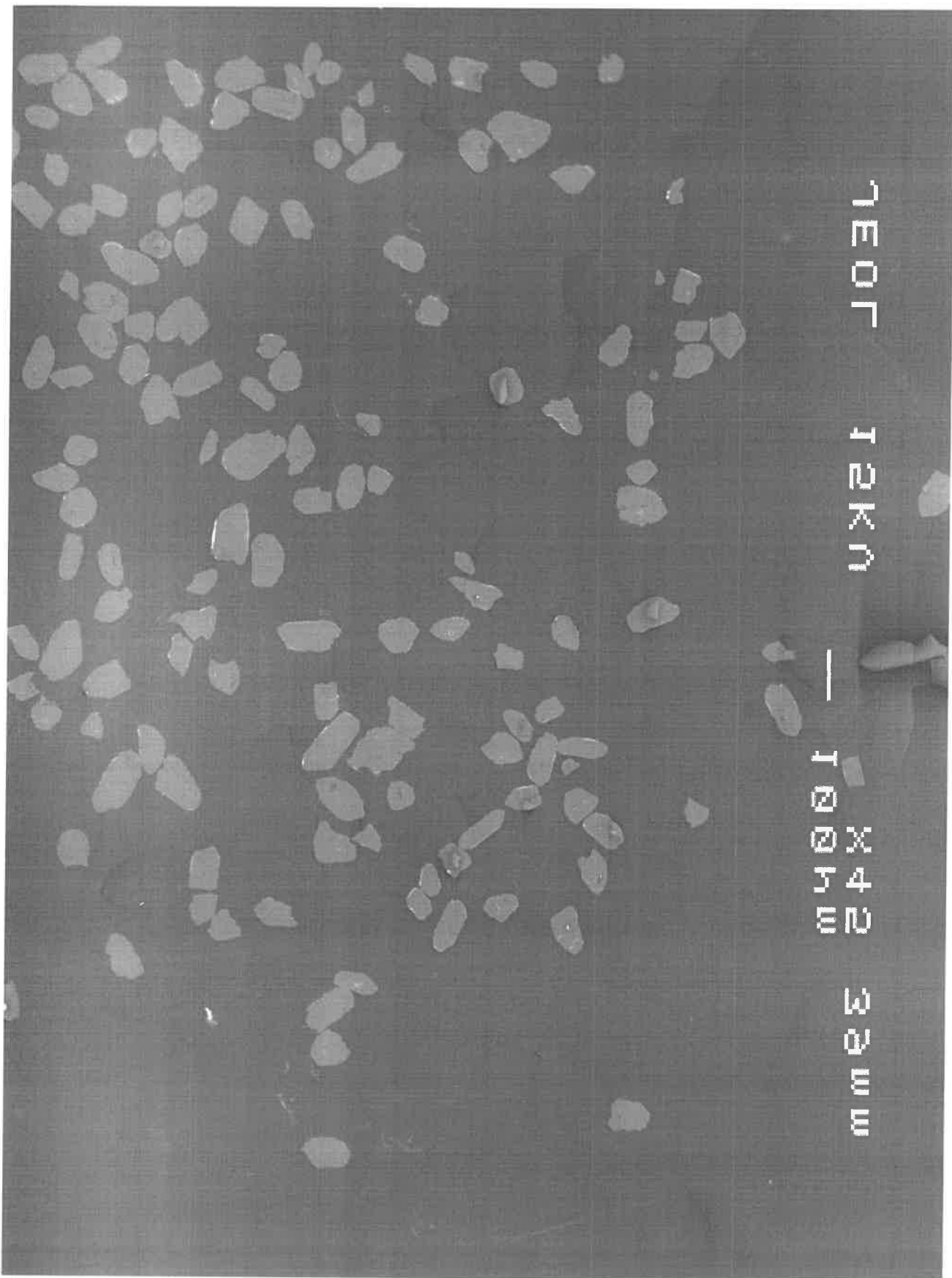
39mm



7E01 12KN

— 1004E

32mm



TEOT TAKN

— 10X42 33mm

