

7E0T

12KN

100H W

32 W W

PG-1-1

120

2-1 23

32 31

51

34

30+ 2

1-1

40

Q-1-1

131

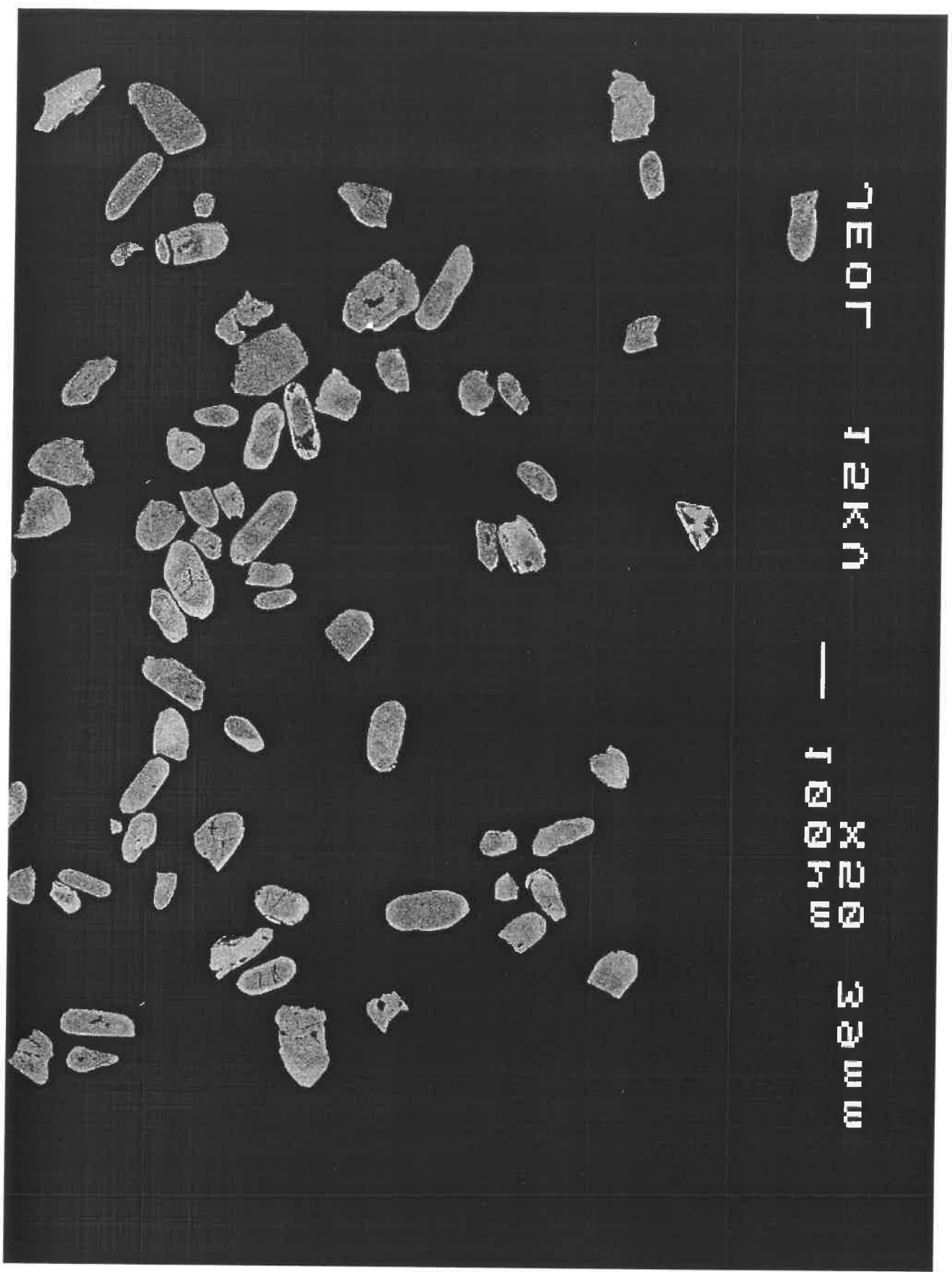
Q-1-1

Q-1-1

Q-1-1

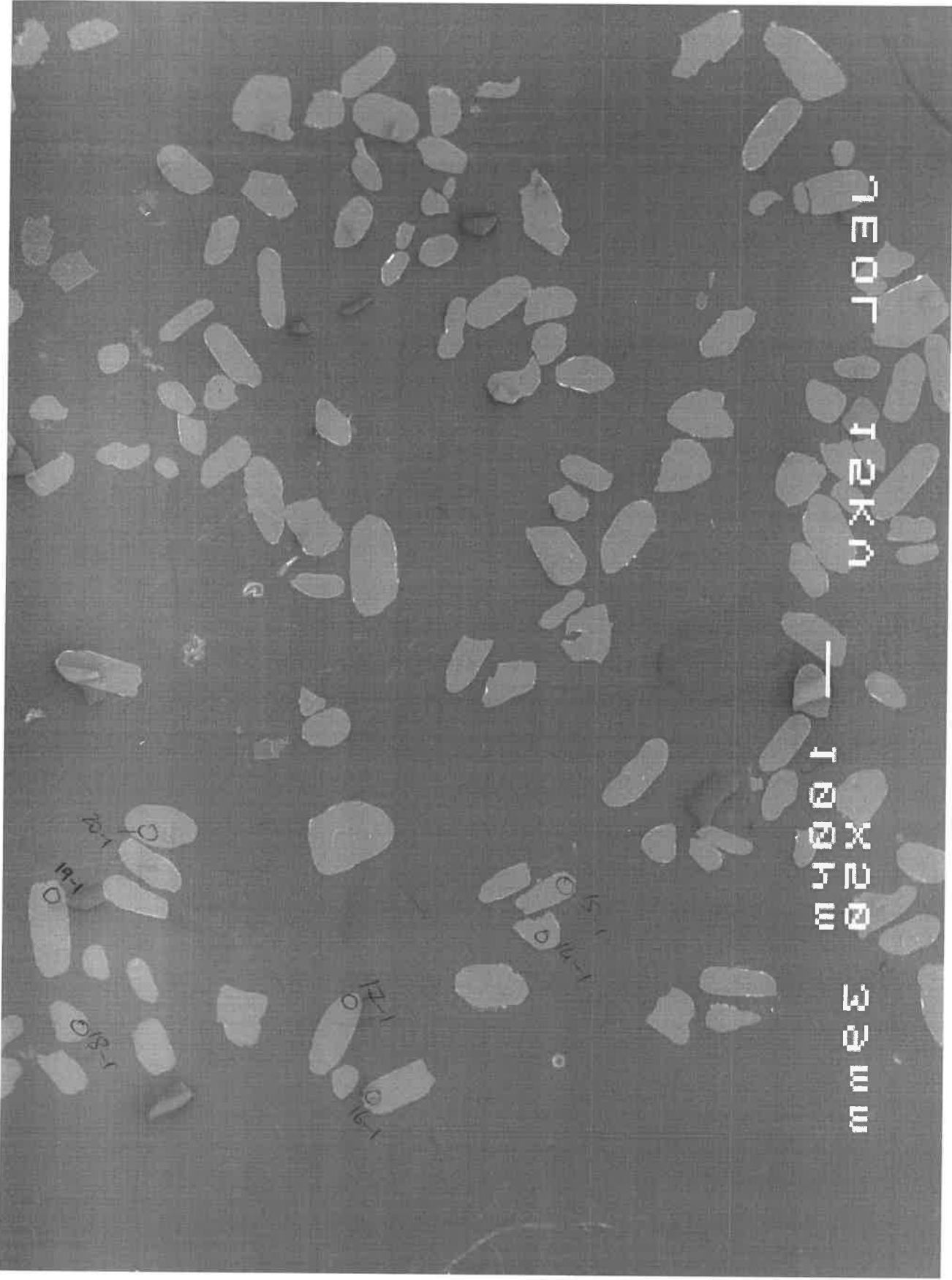


7E0T 12KN — 100Hw X20 3aww



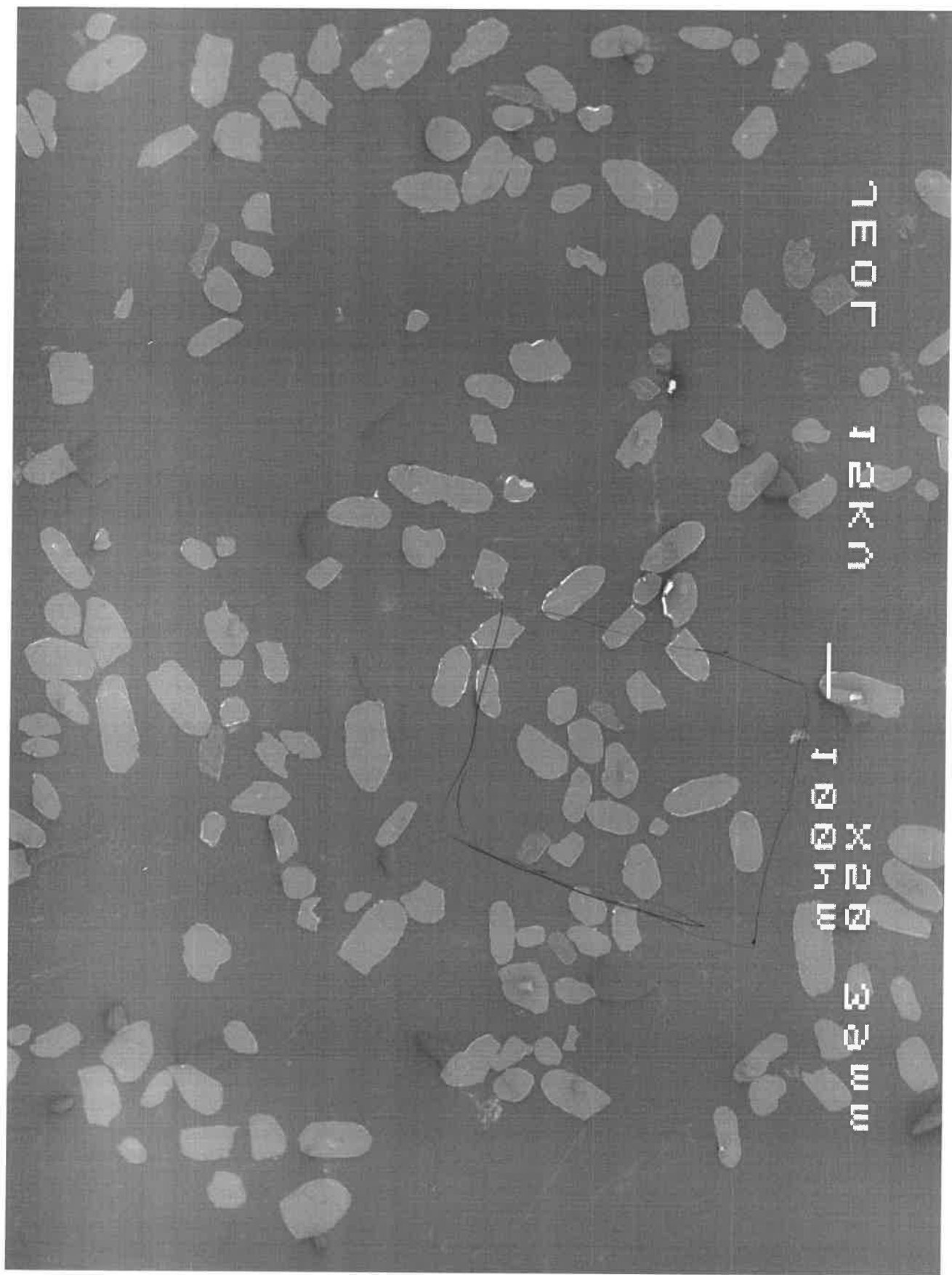
7E0F 12KN

— 100H W 32W W



1E01 12KN

100H
X20
32W



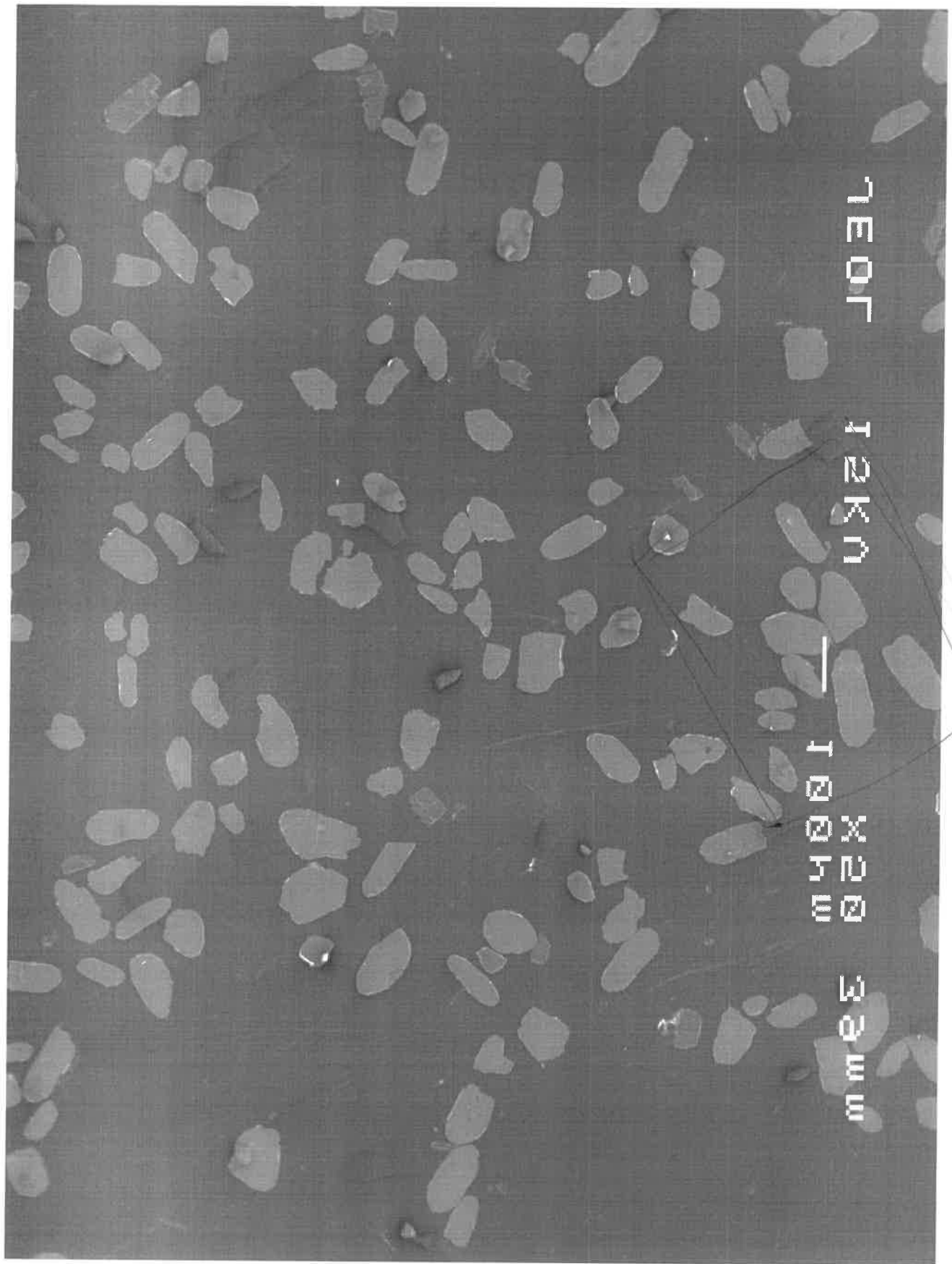
7E07

12KN

— 1004W

X20

3aww



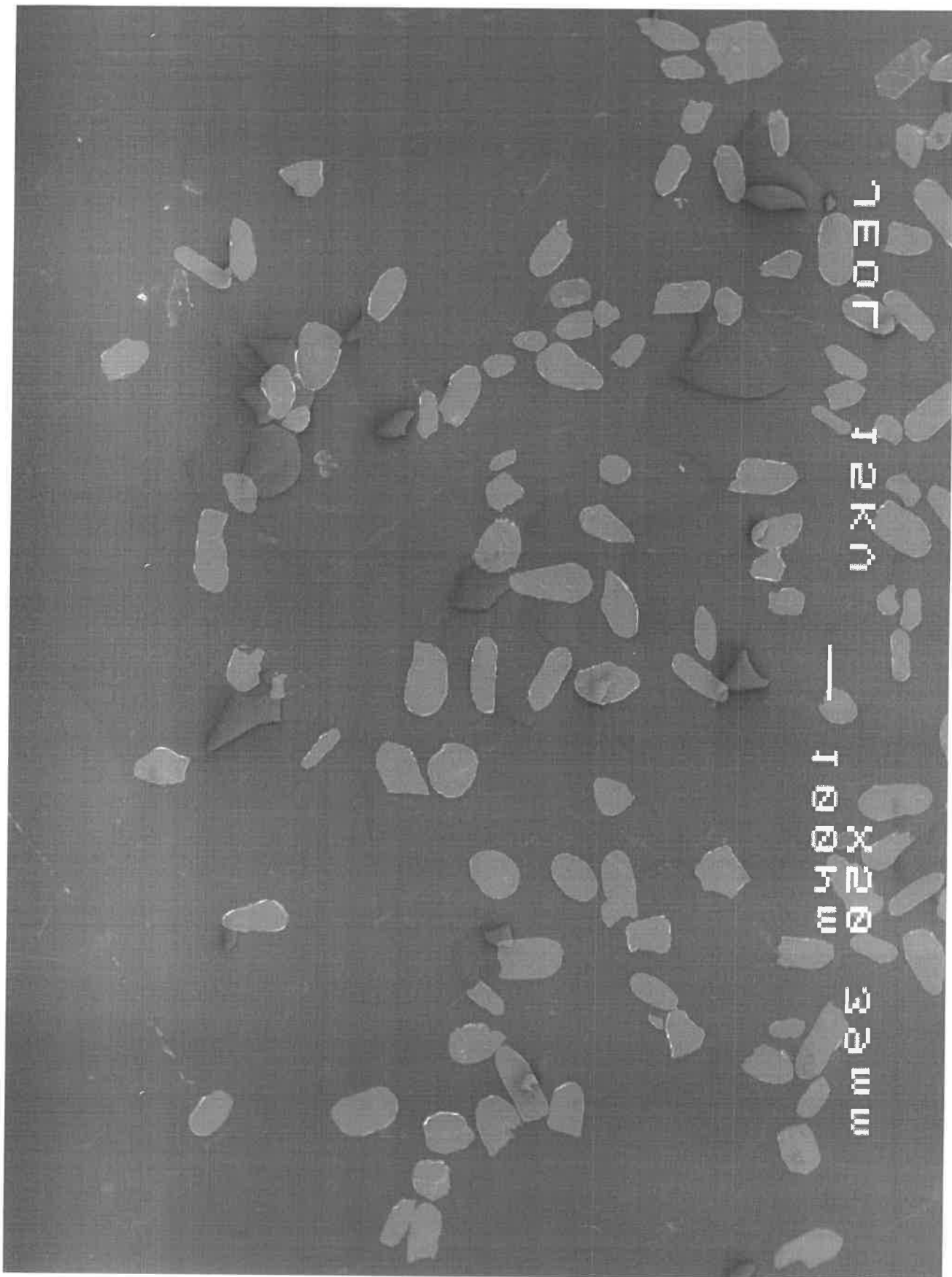
7E01

12KN

—

100KN

32mm

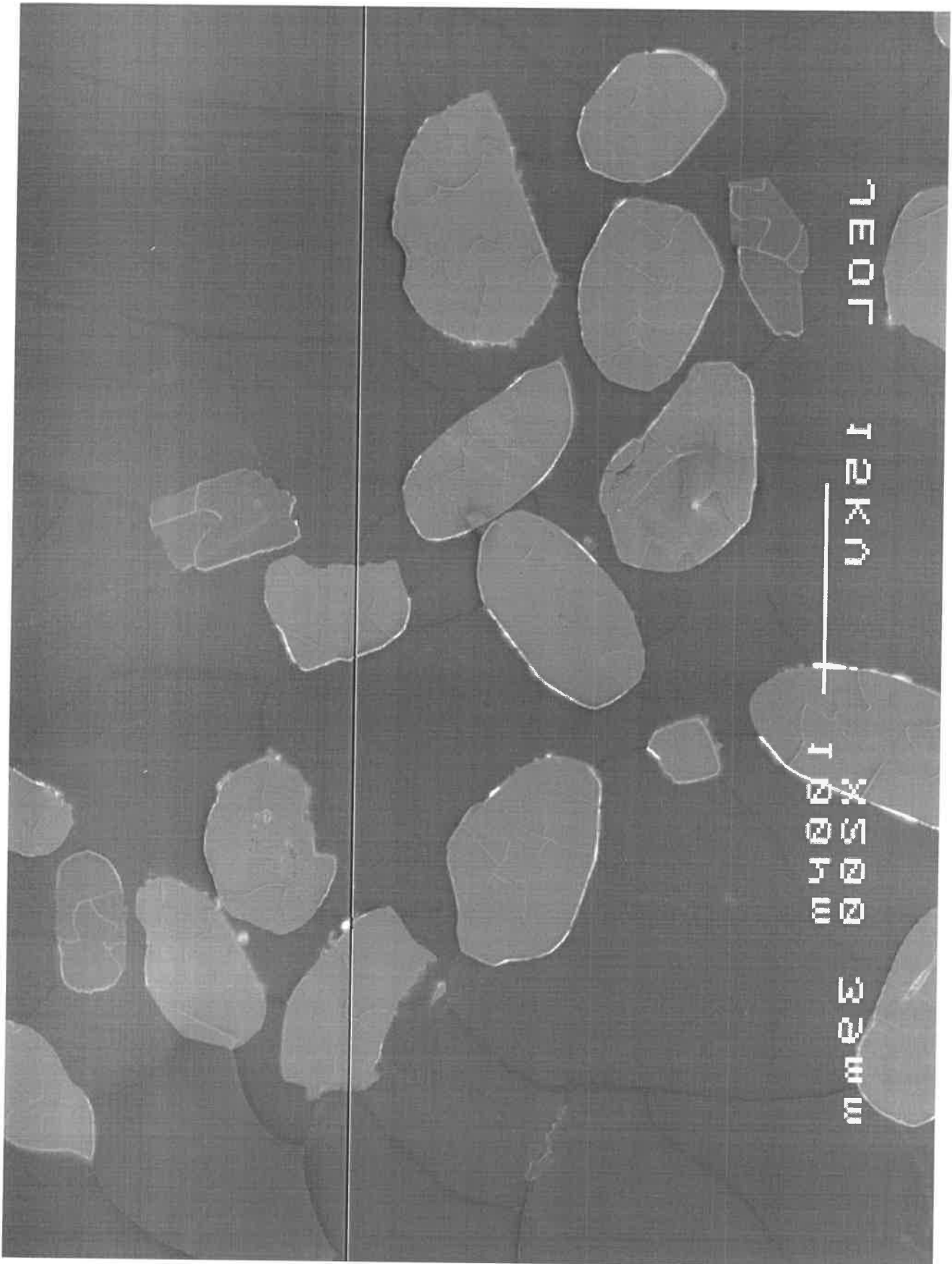


1E0T

12KN

18500

32WU

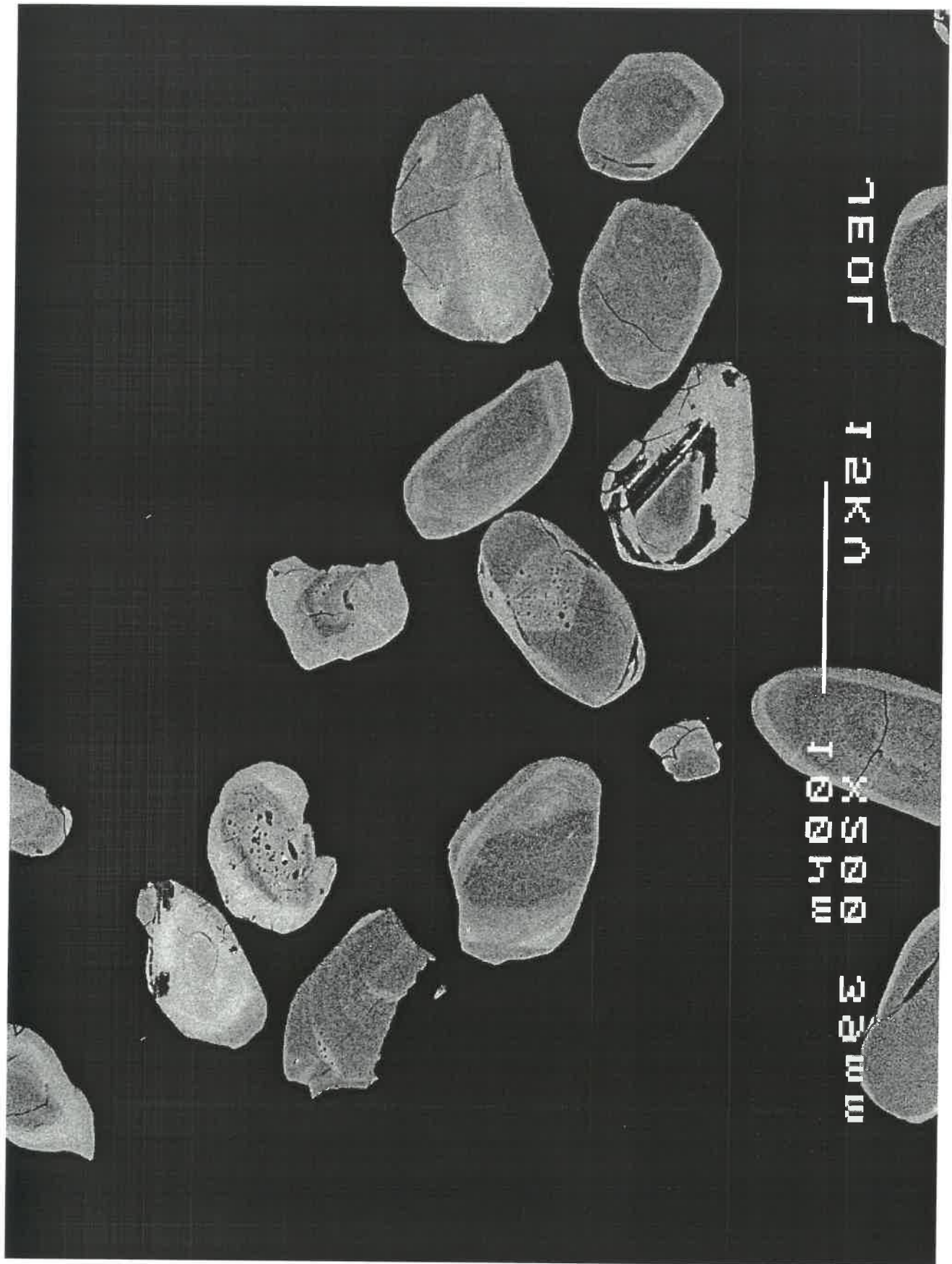


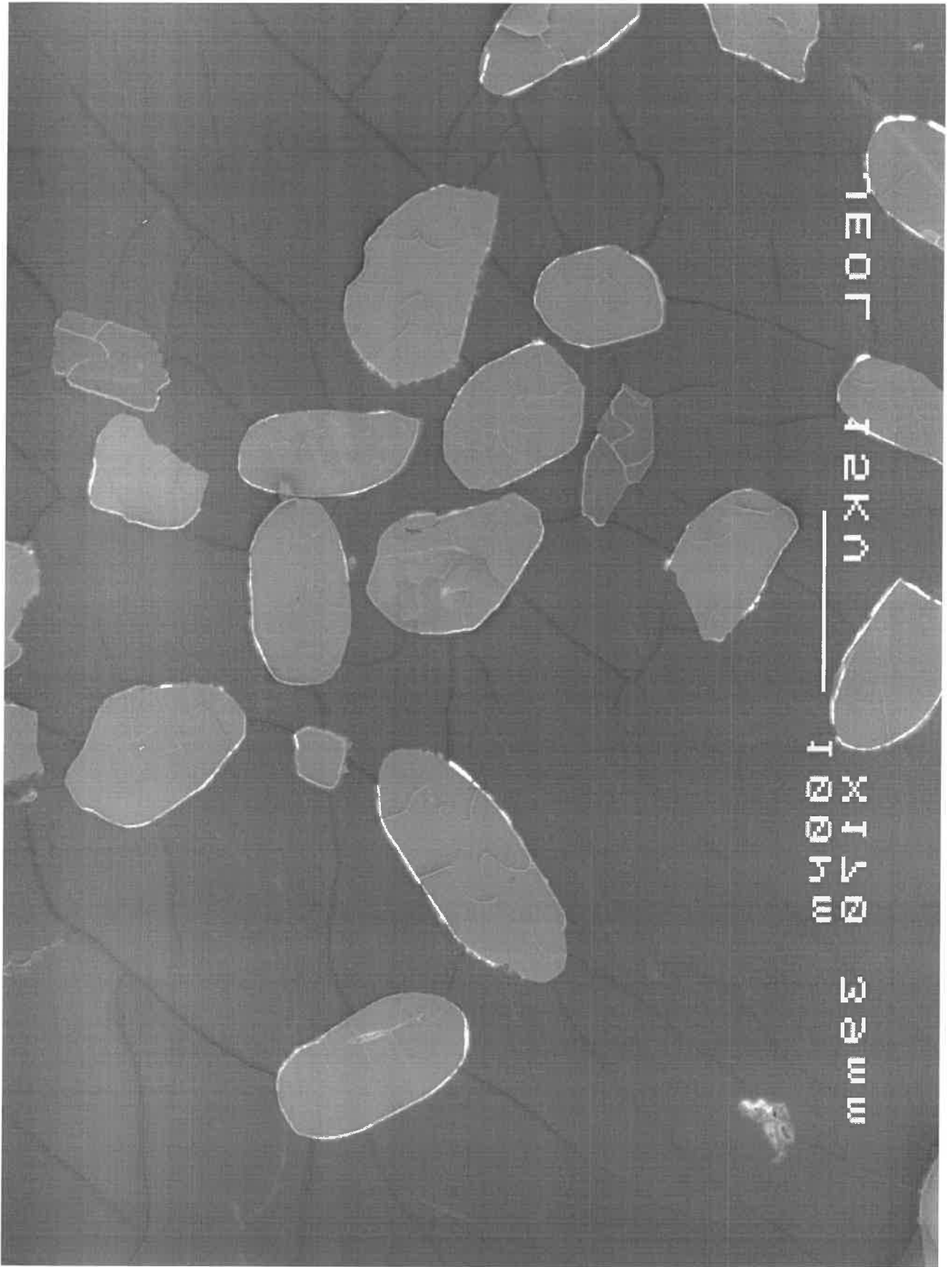
7E0T

12KN

1004W

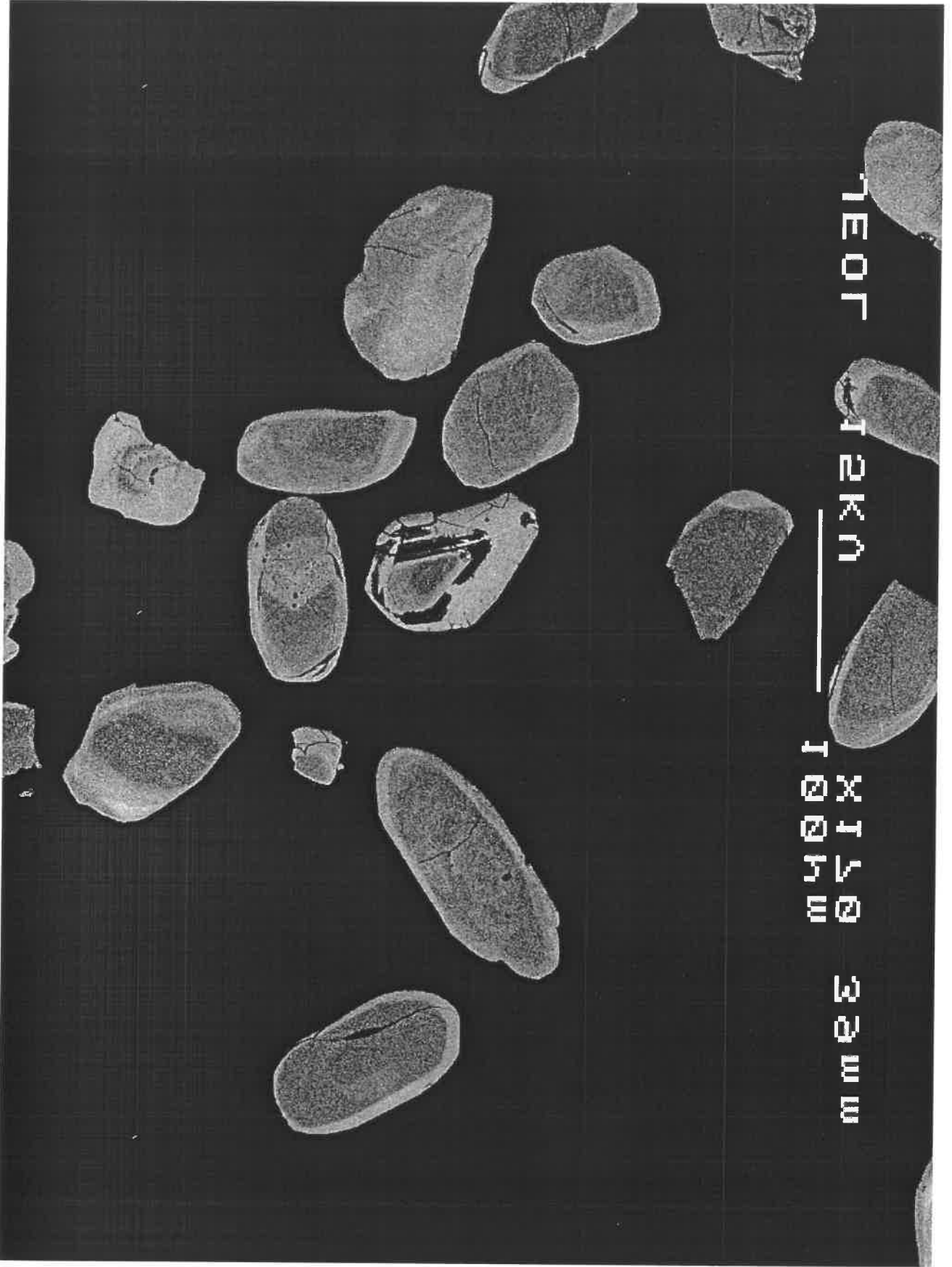
32W

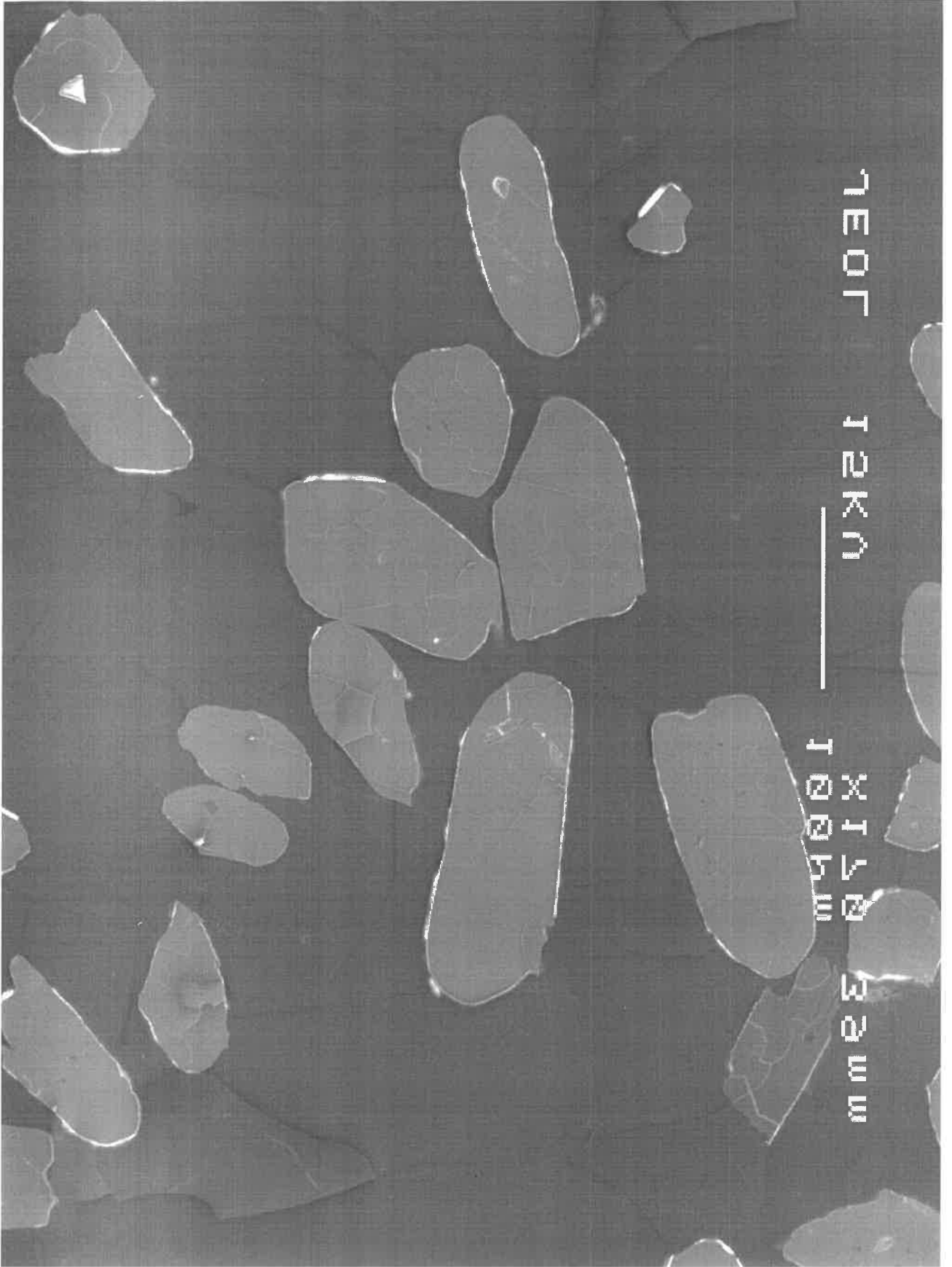


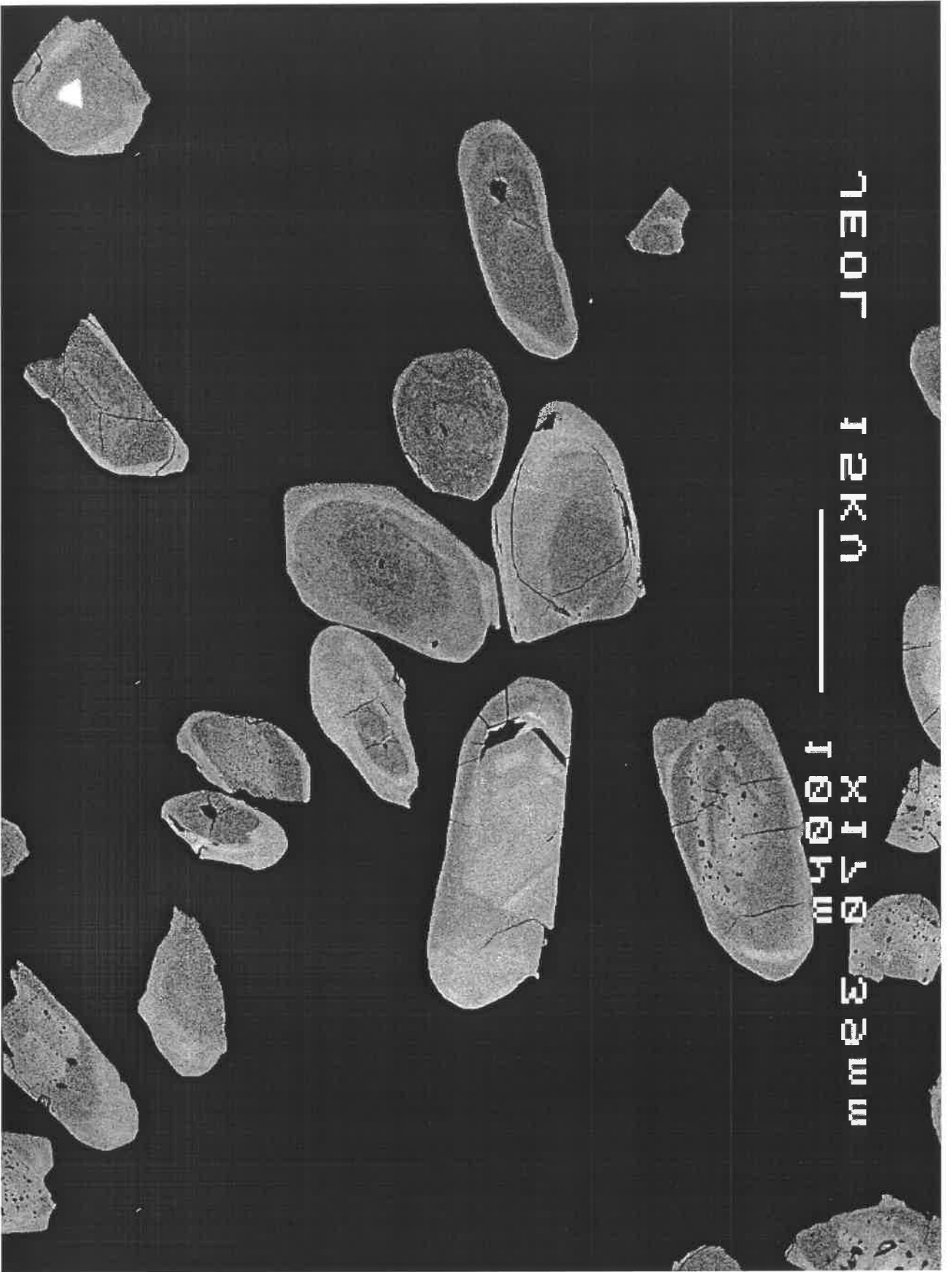


TEOT 12KN

1004W 32W





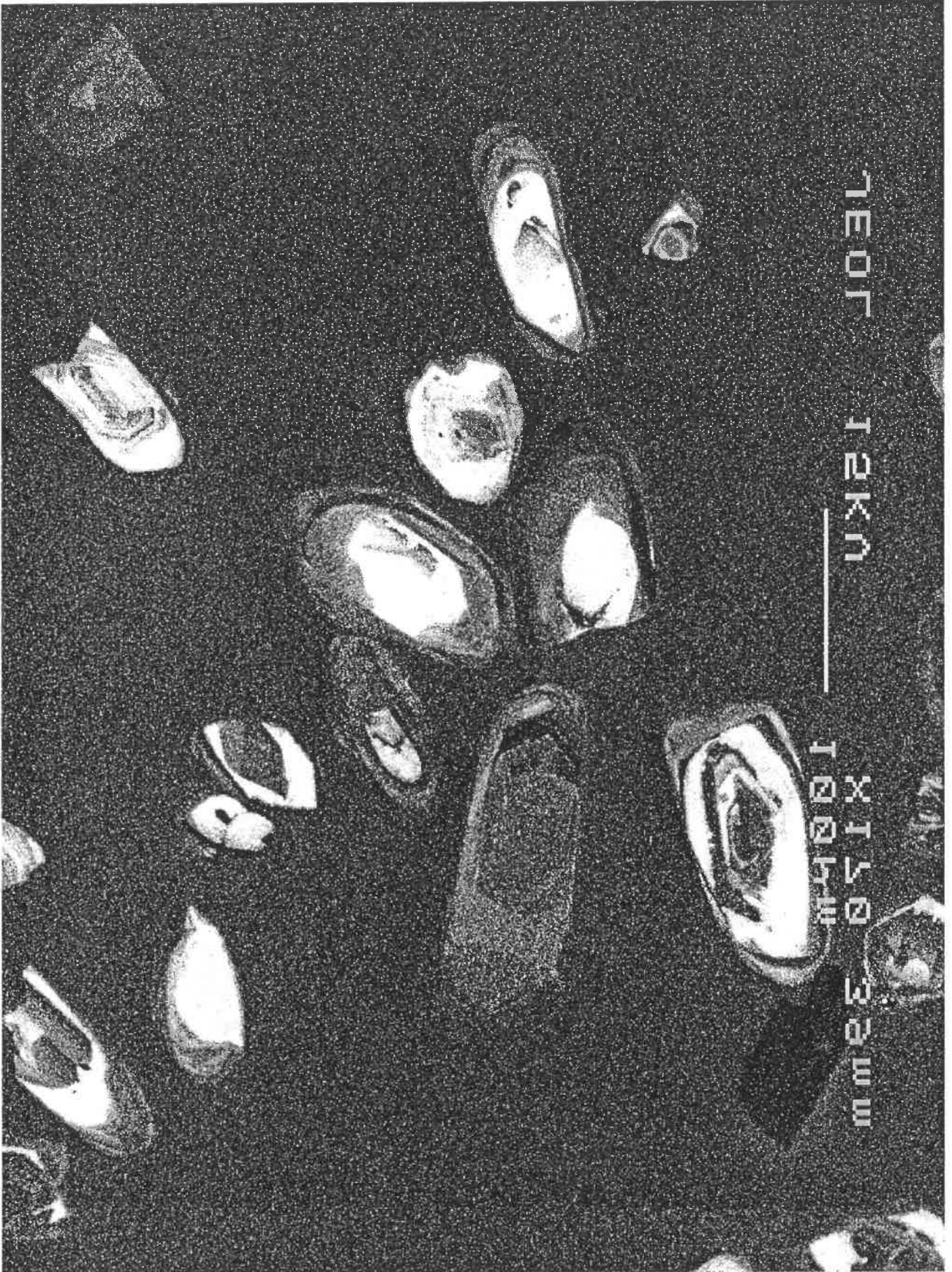


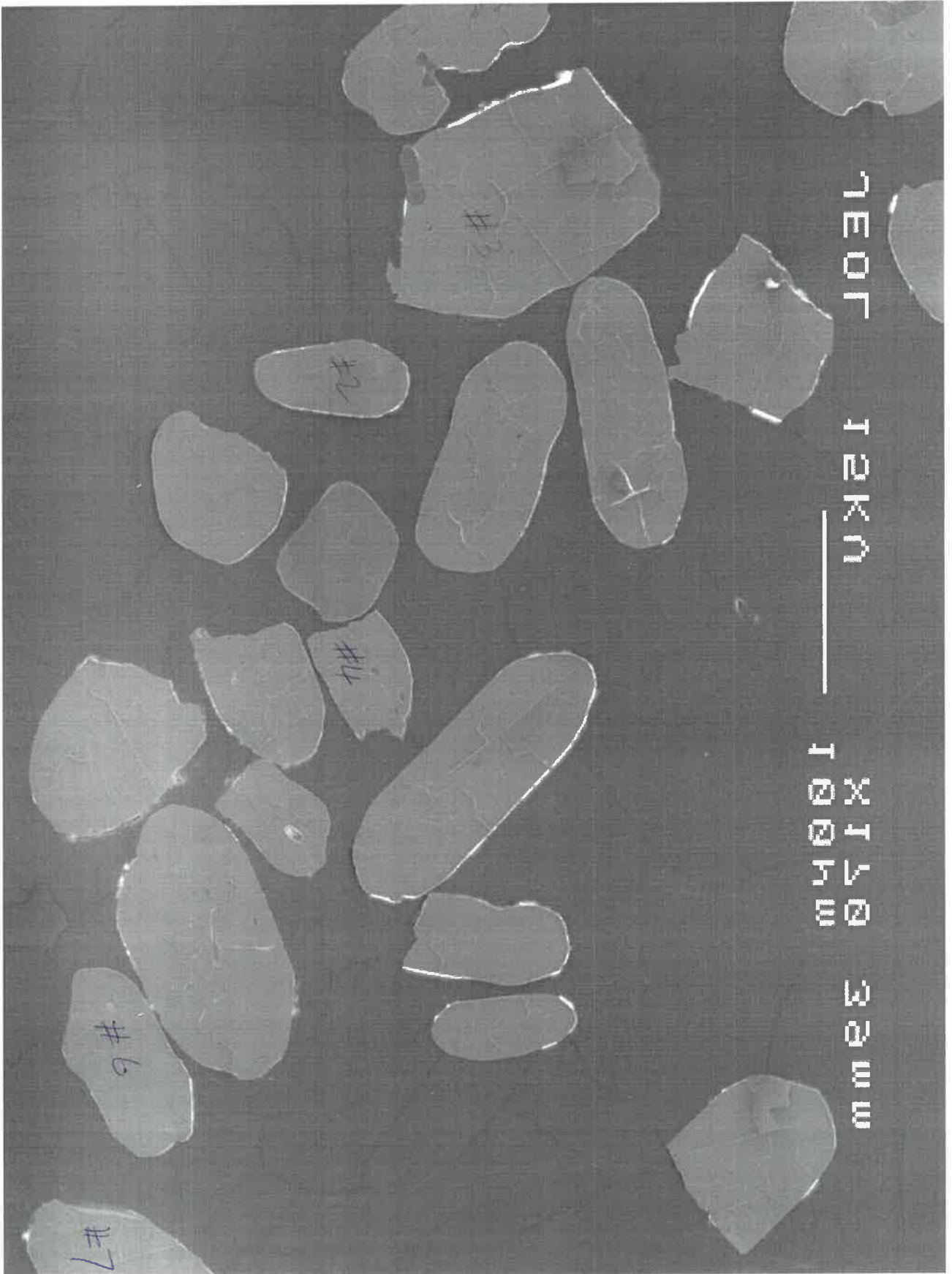
1E0T

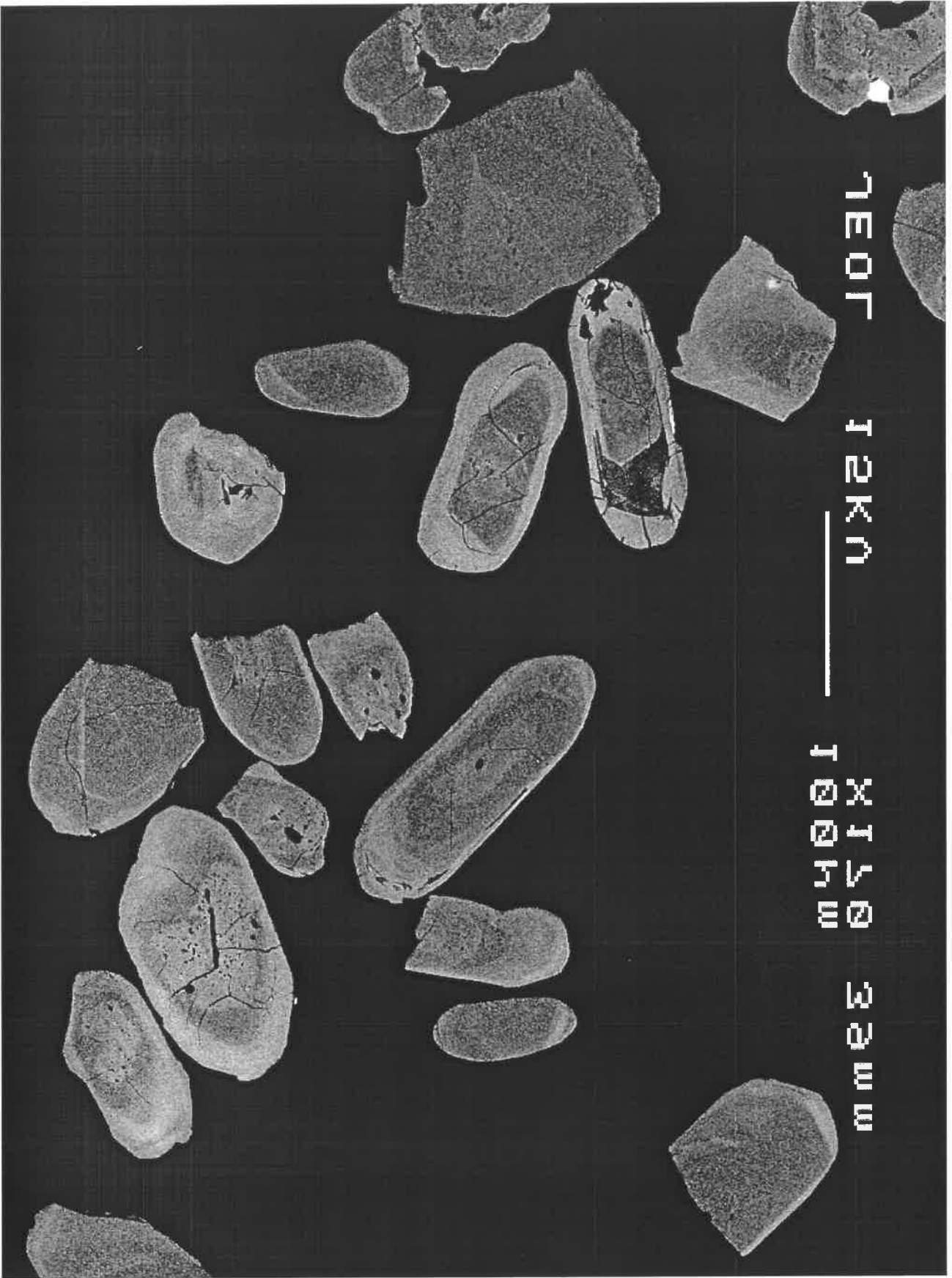
12KN

X150

33µm







1E0T

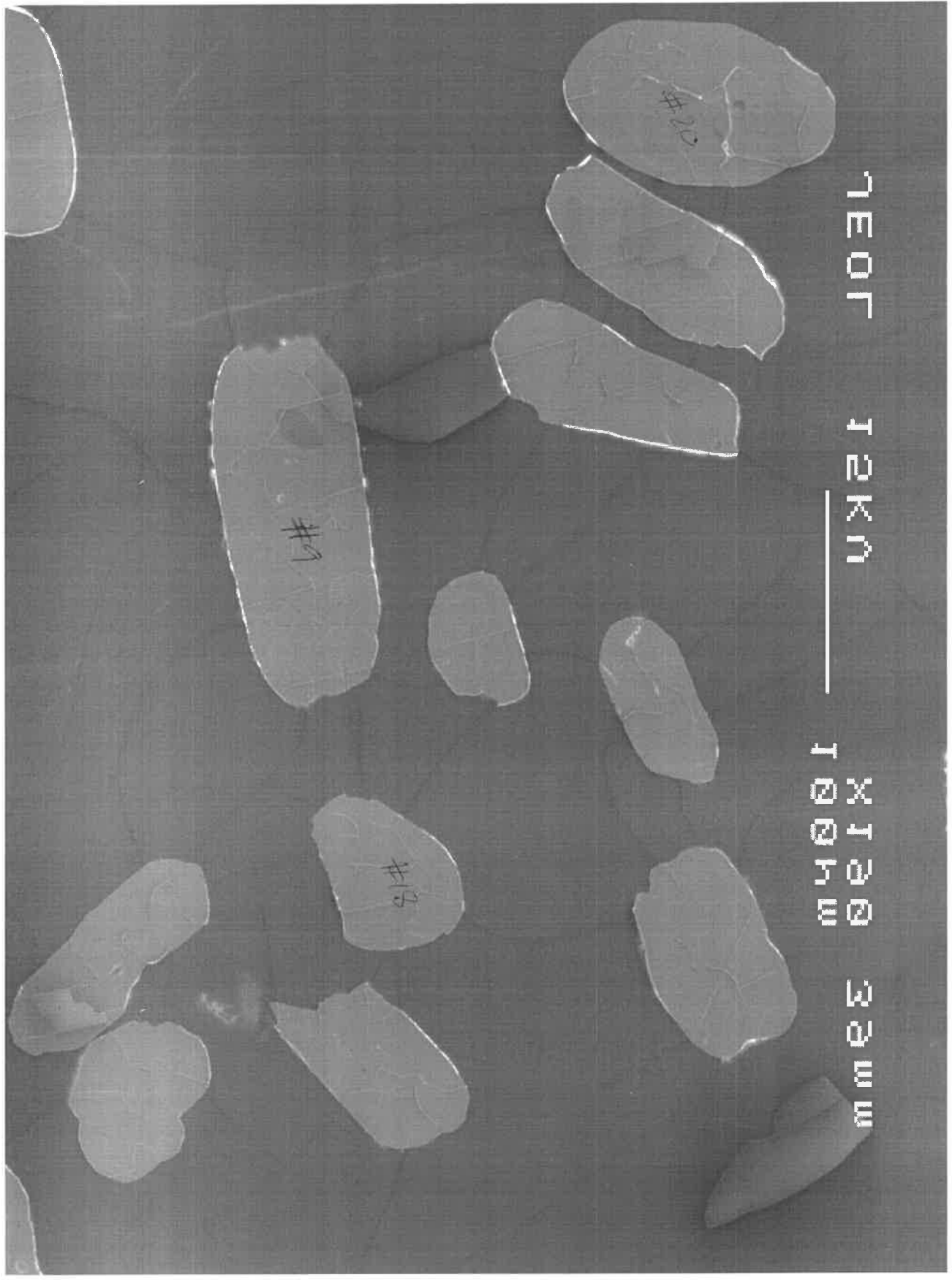
12KN

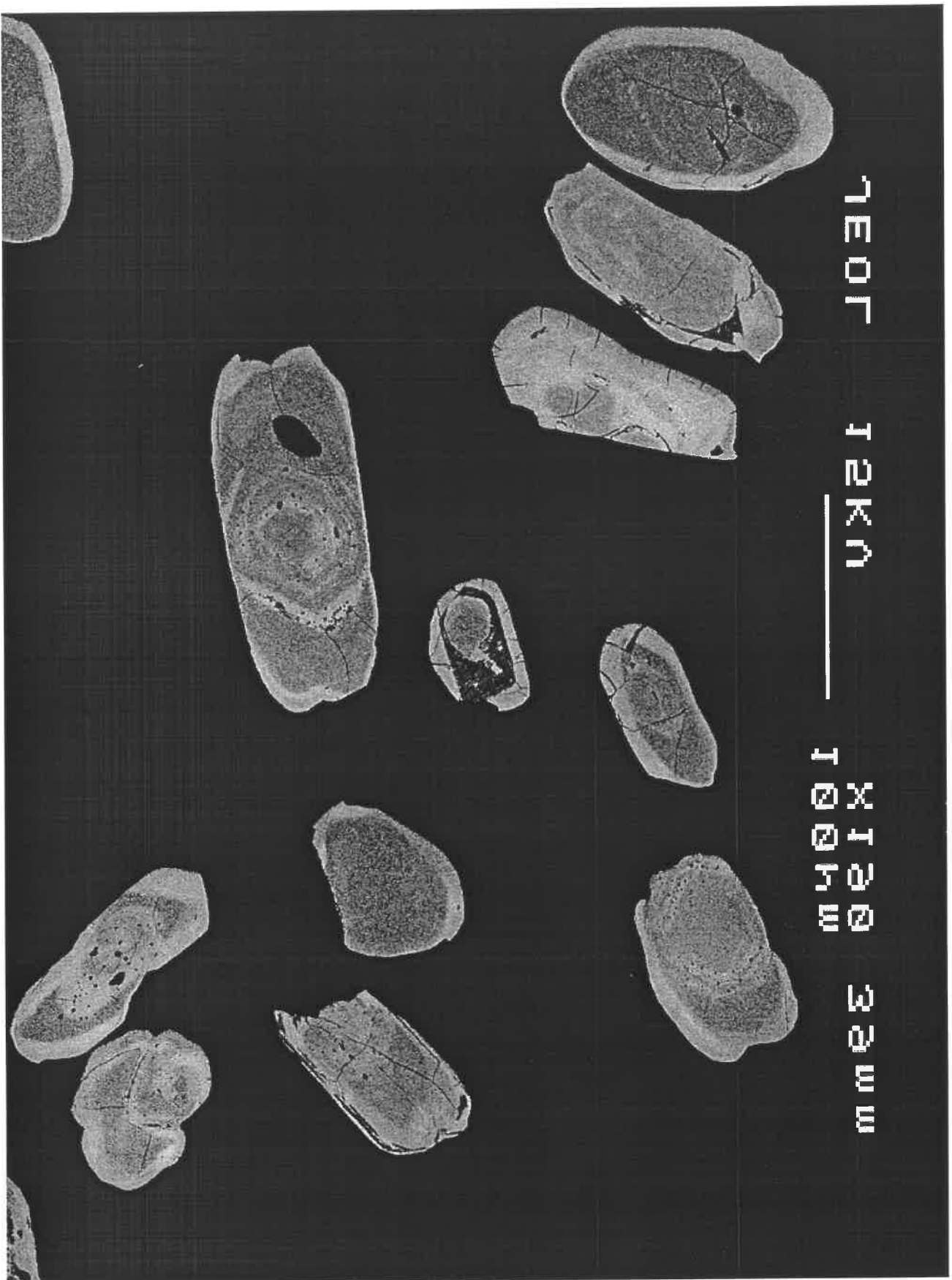
100H W

33W W

1E0T 12KN

100H0 33WU





7E0T

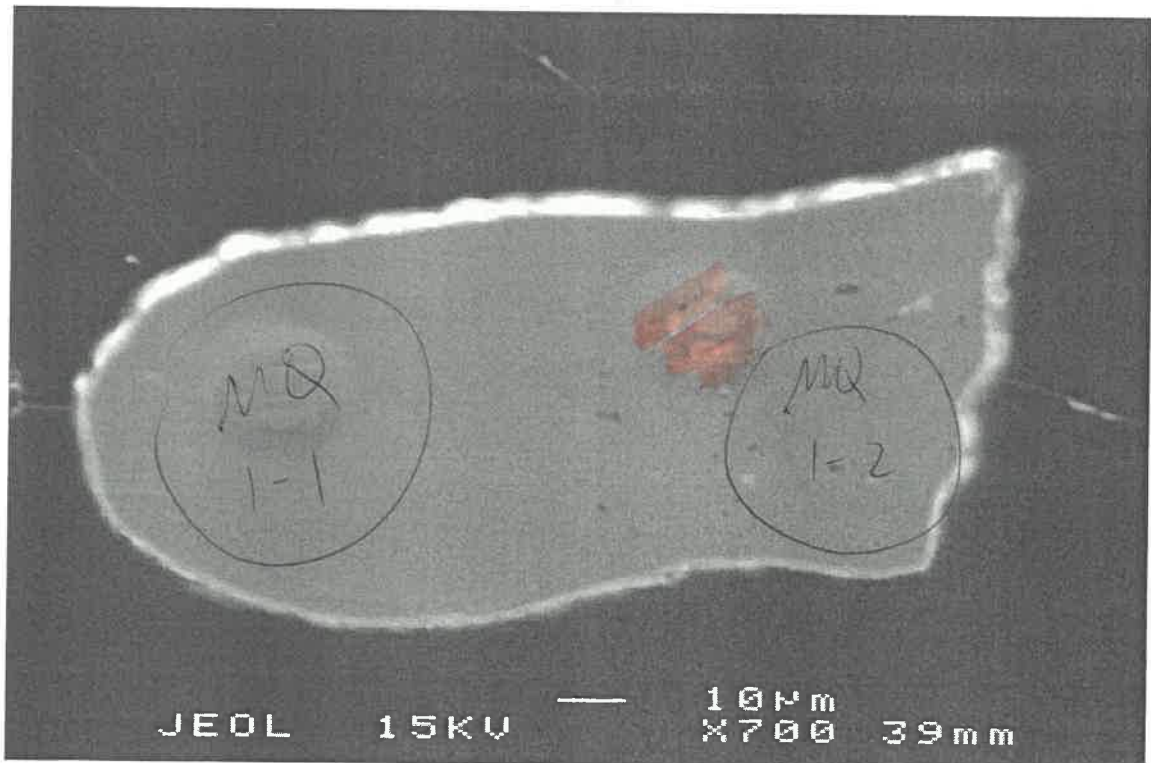
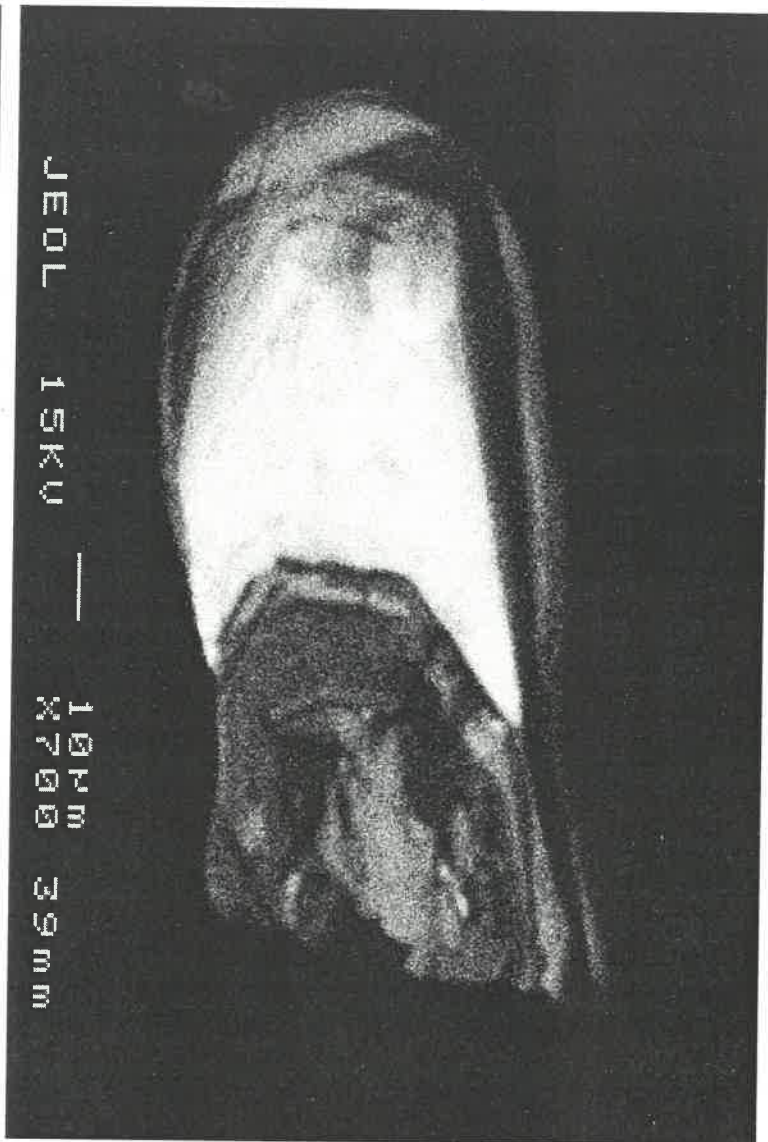
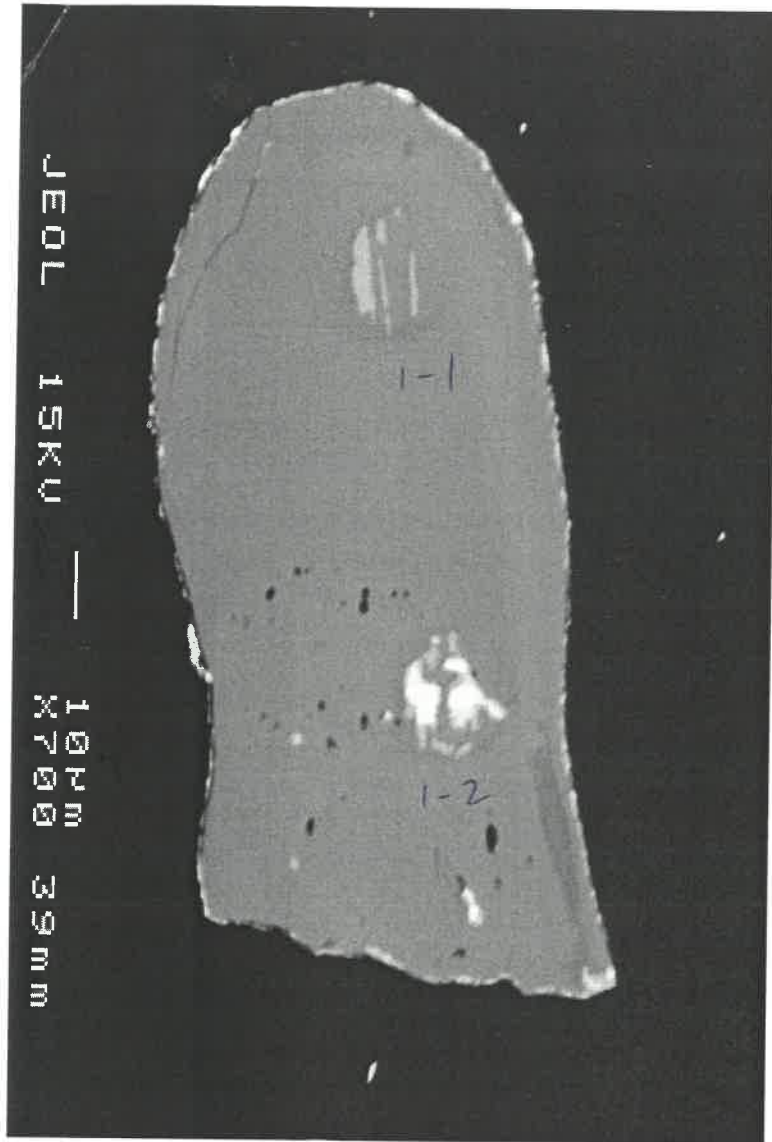
12KN

1004W

33W W

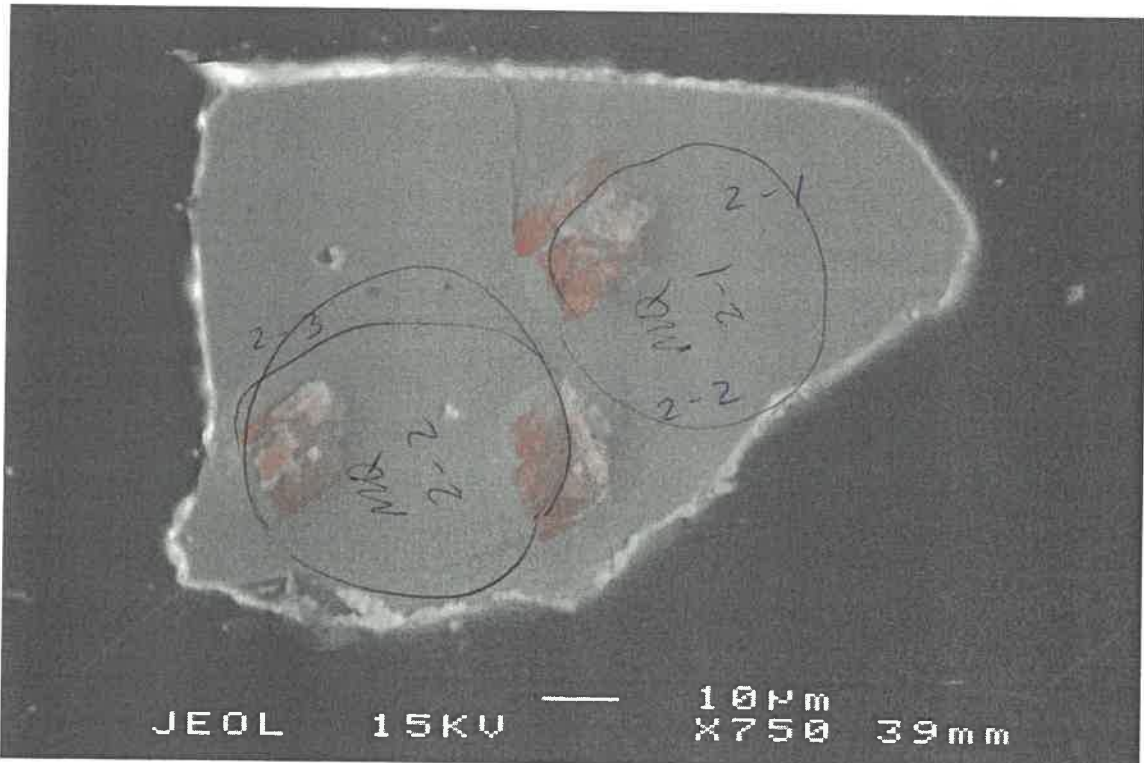
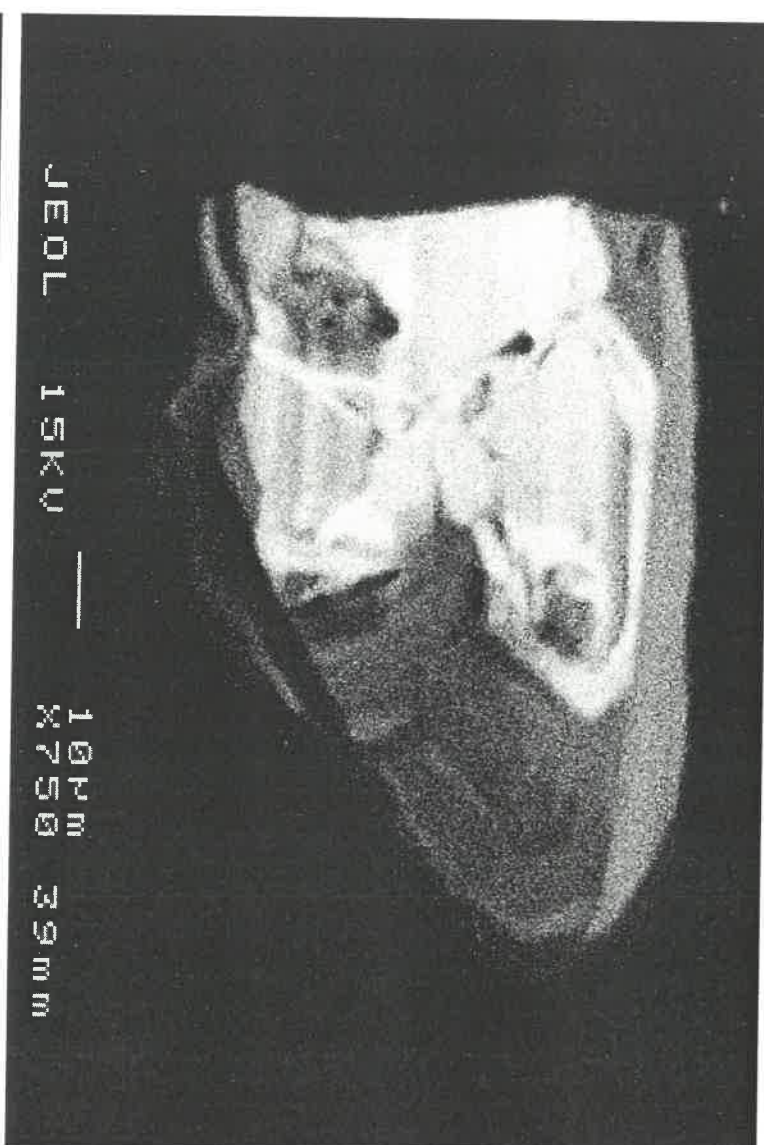
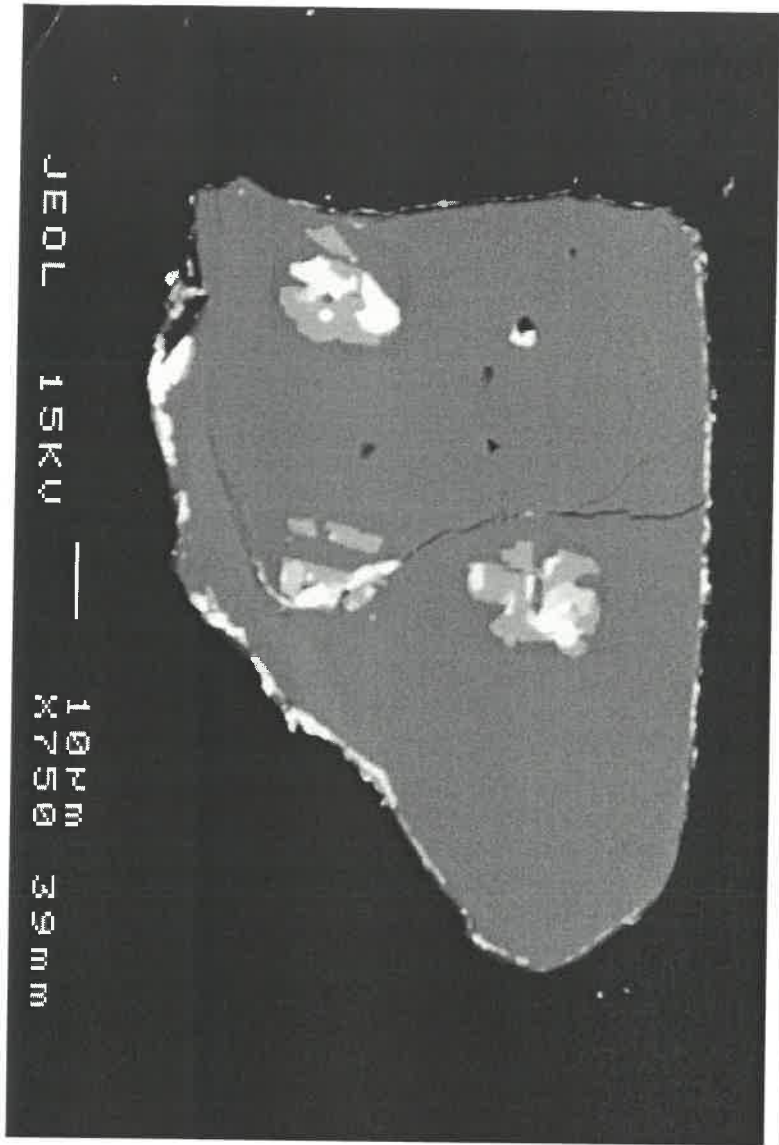
OS-89c

Post-SH
110906



#1
 =
 microheater

05-89C



#2

MD = 28/10/10

2-3

MD
2-2

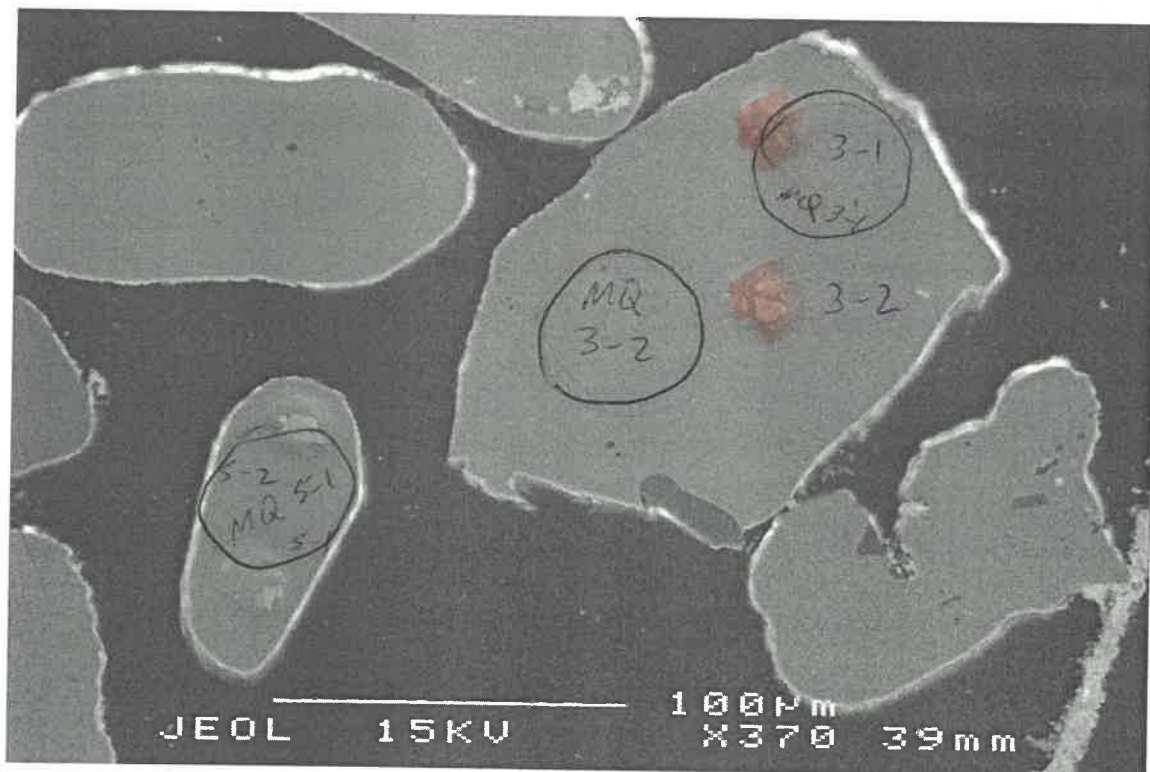
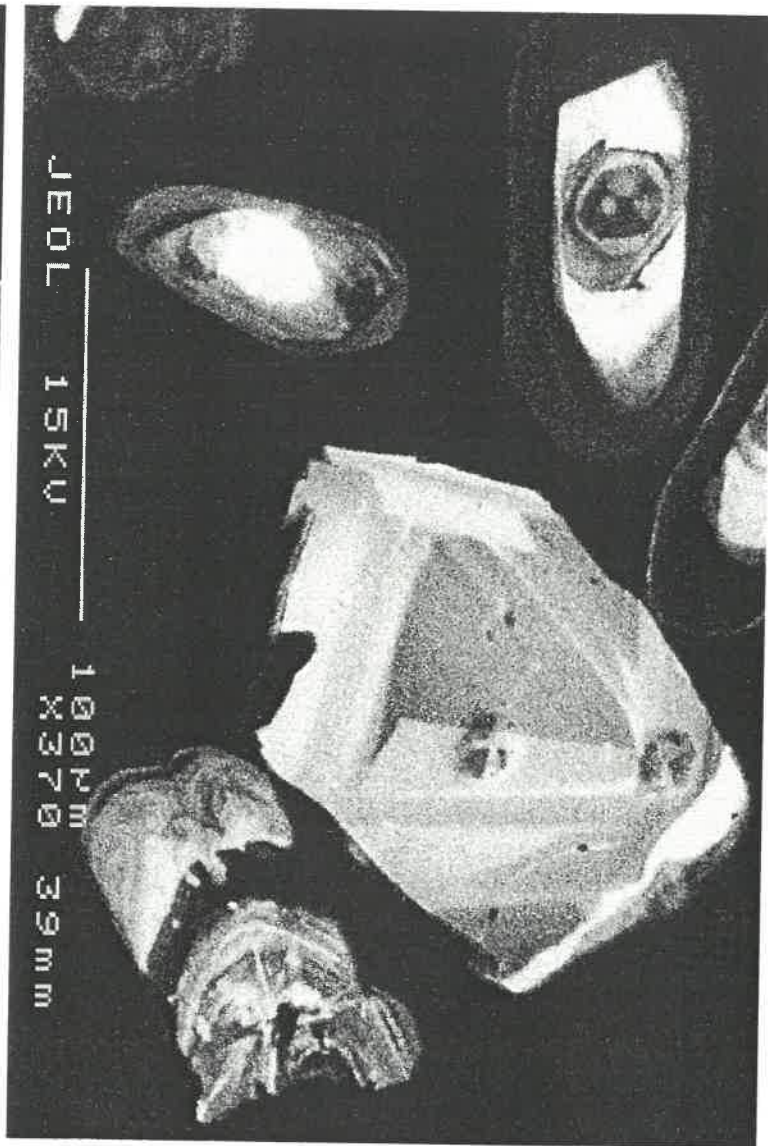
MD

2-2

2-1

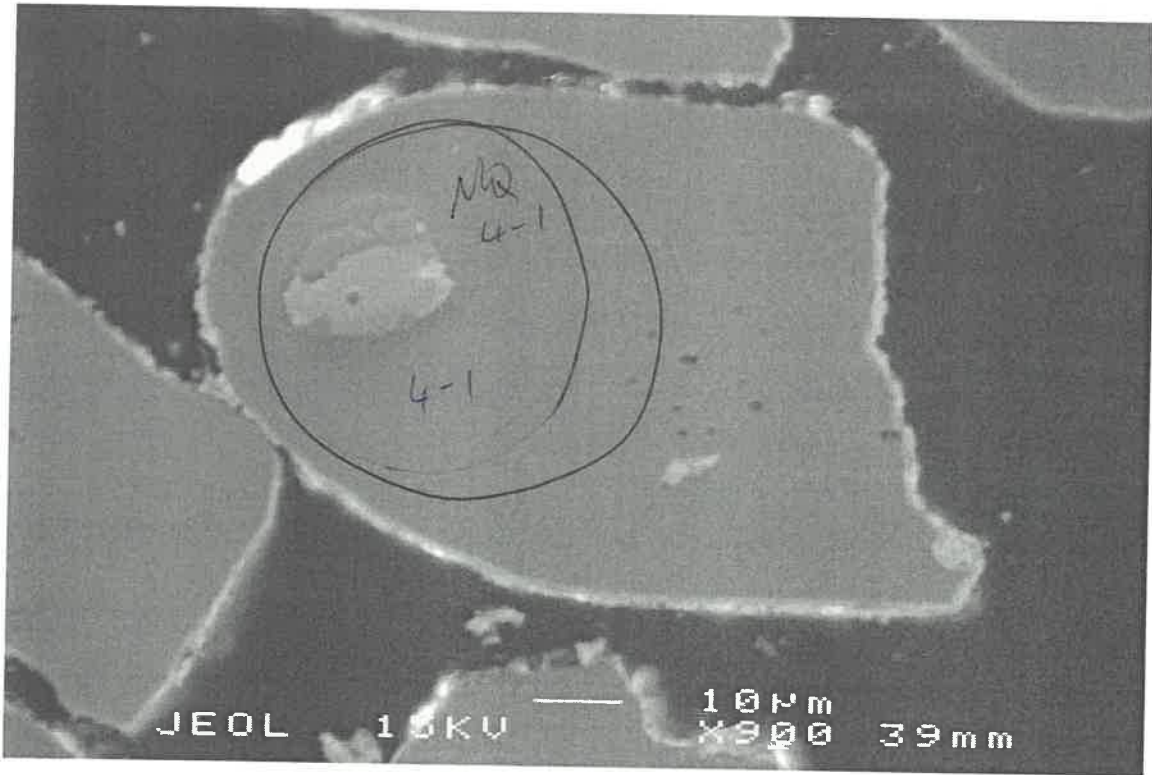
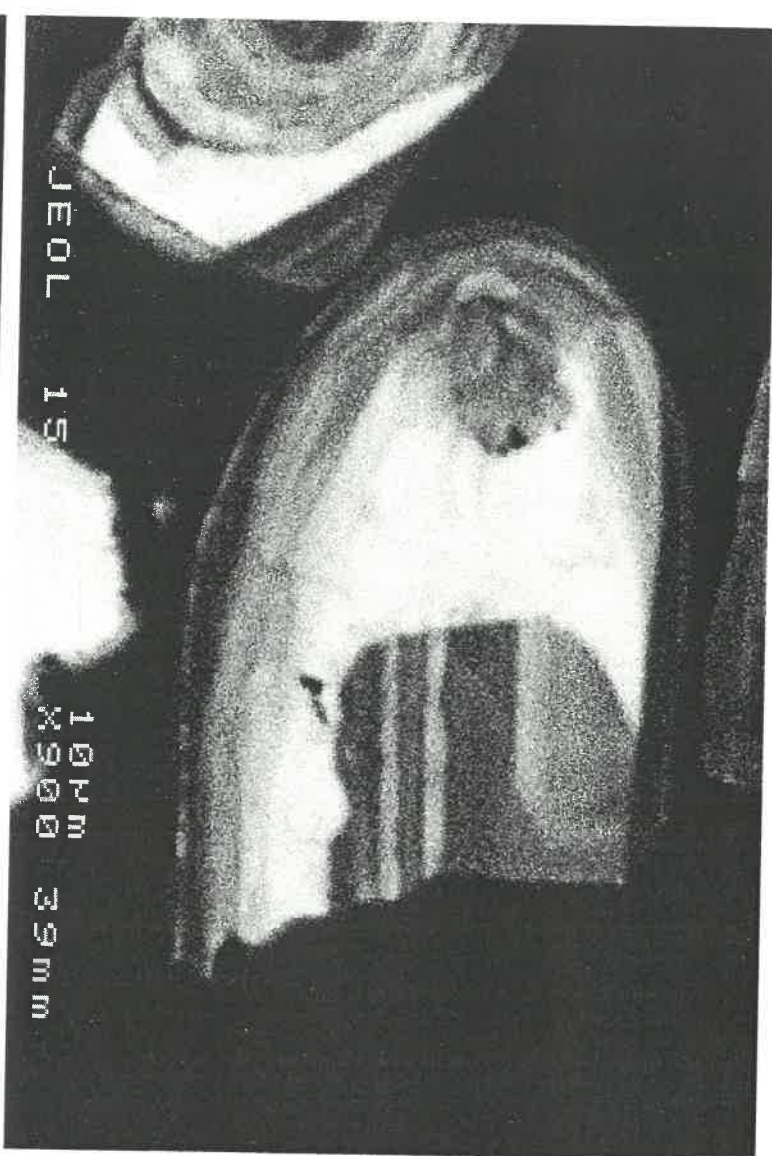
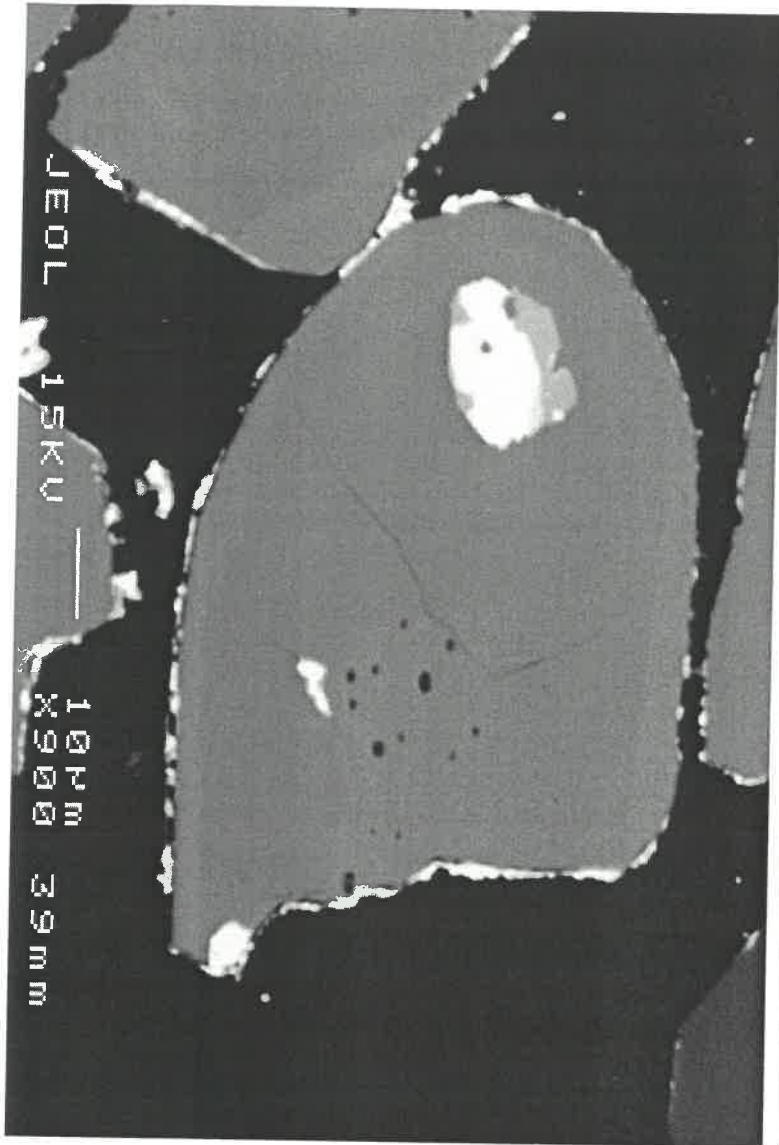
2-1

05-89c



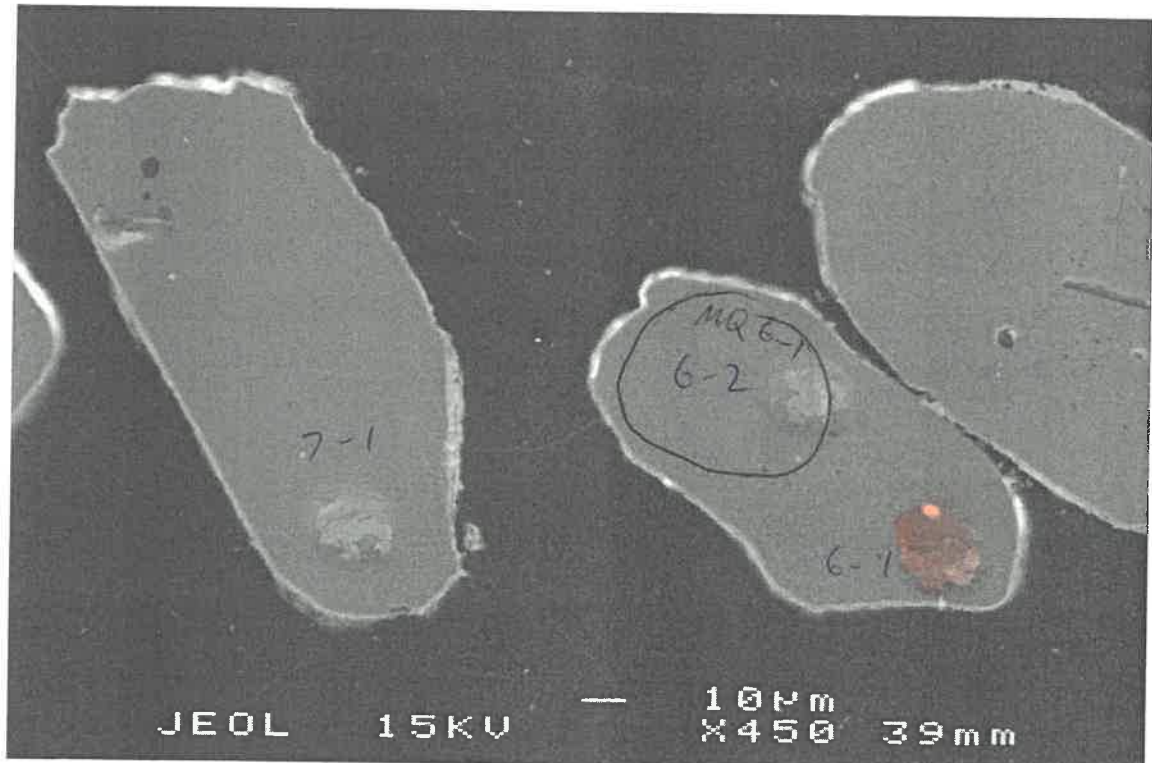
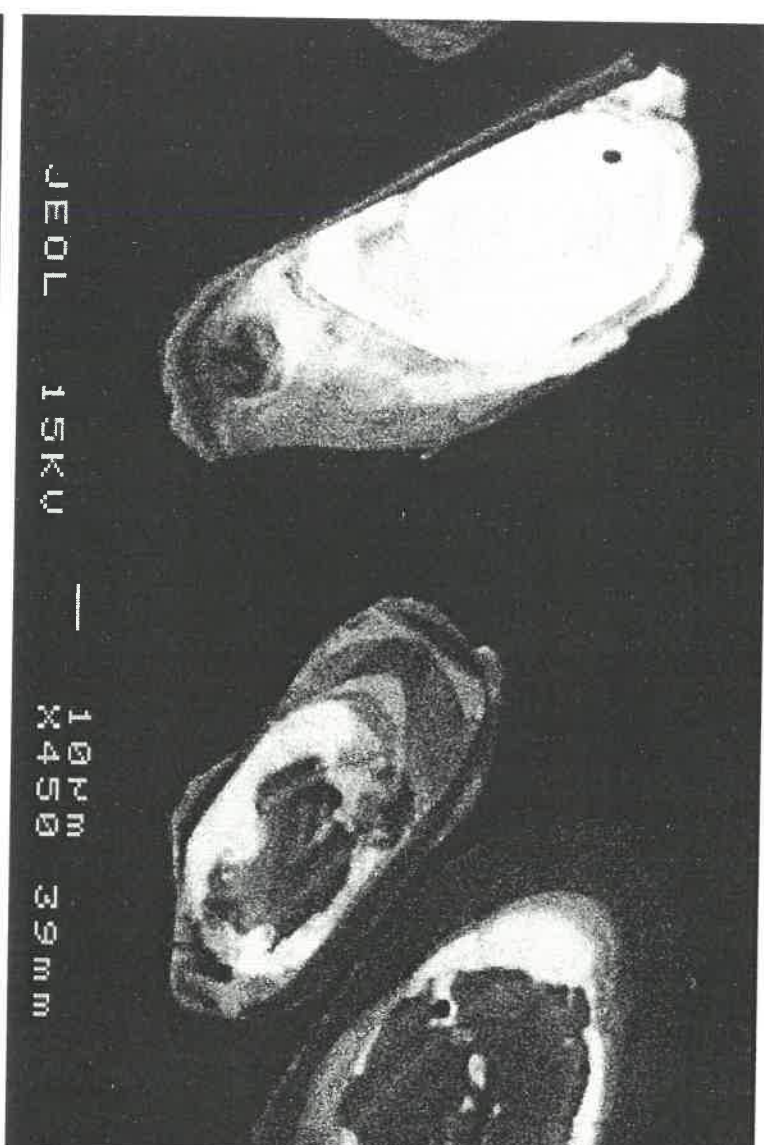
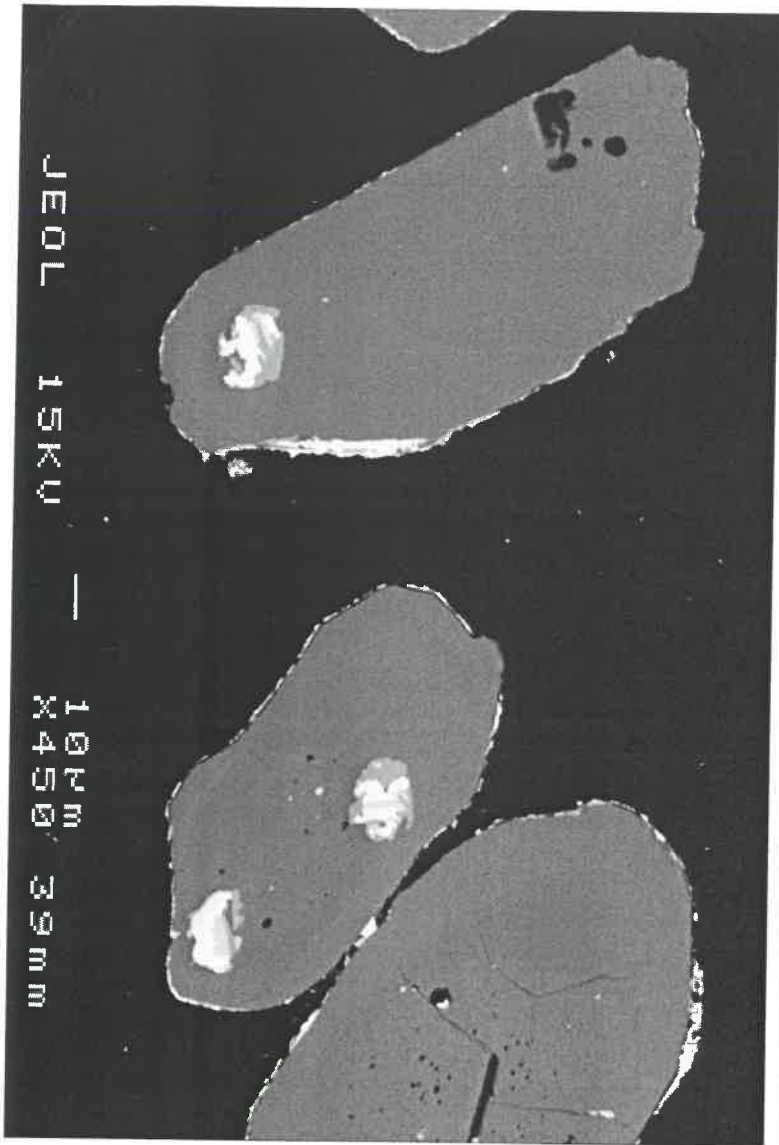
#3
+
#5

05-89c



#4

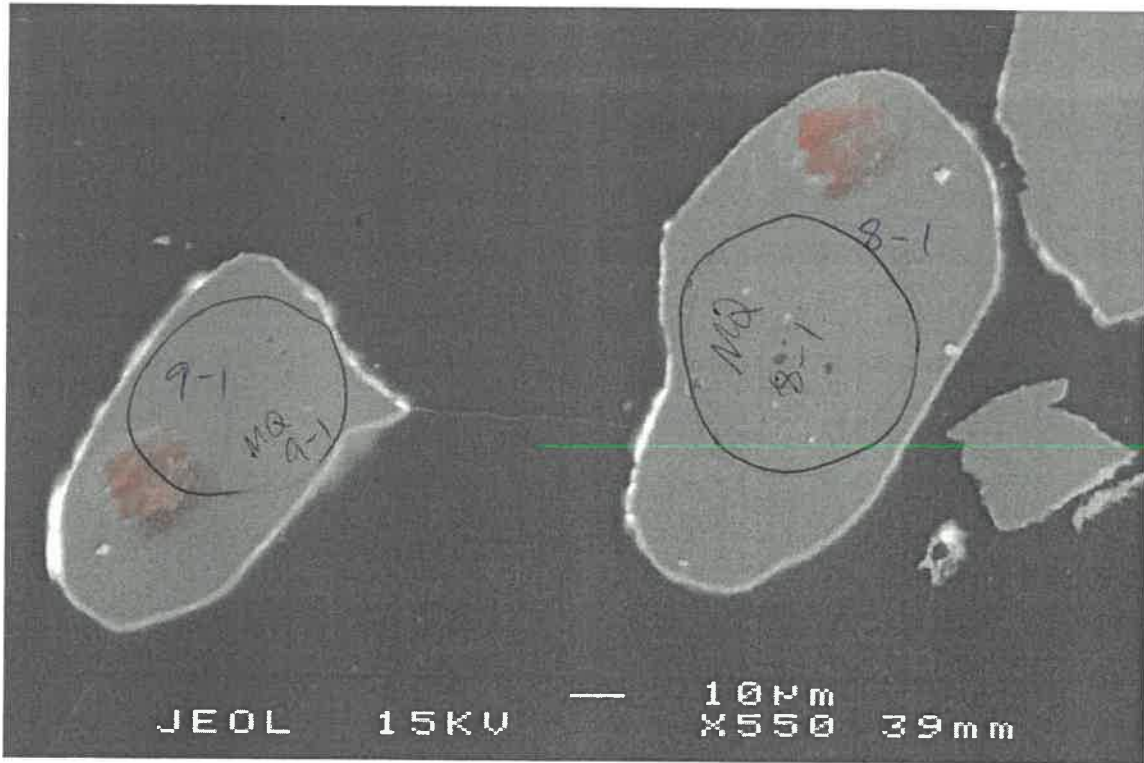
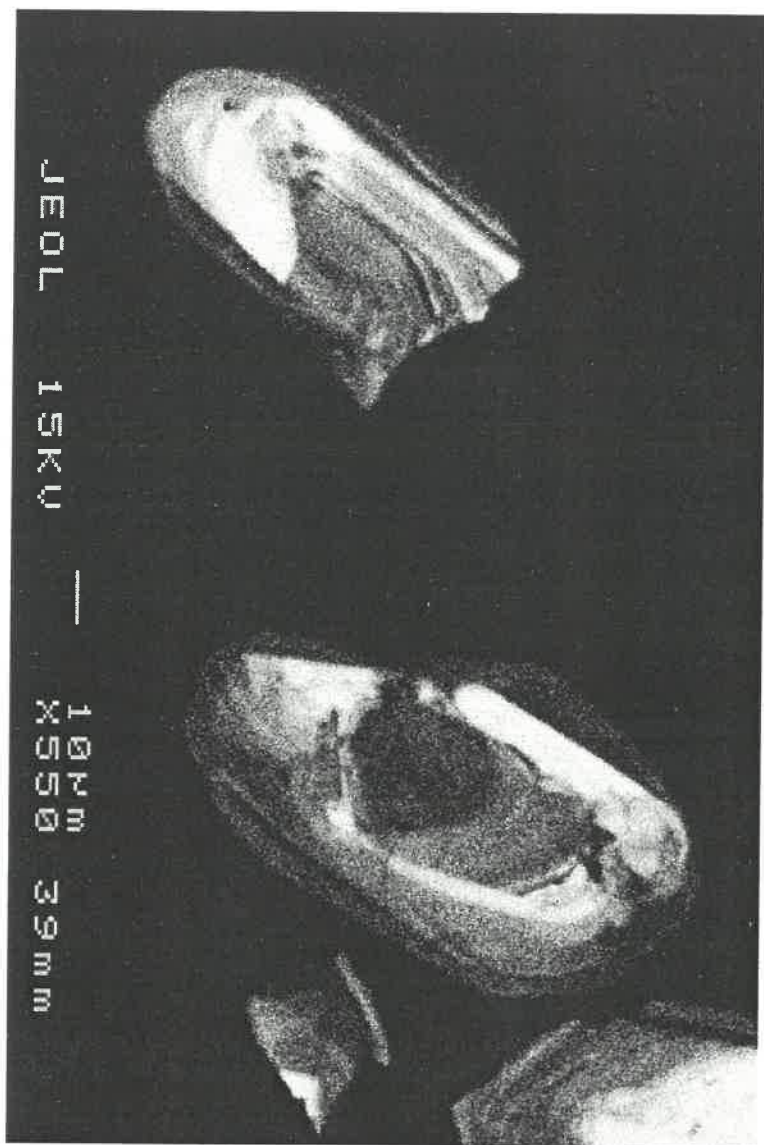
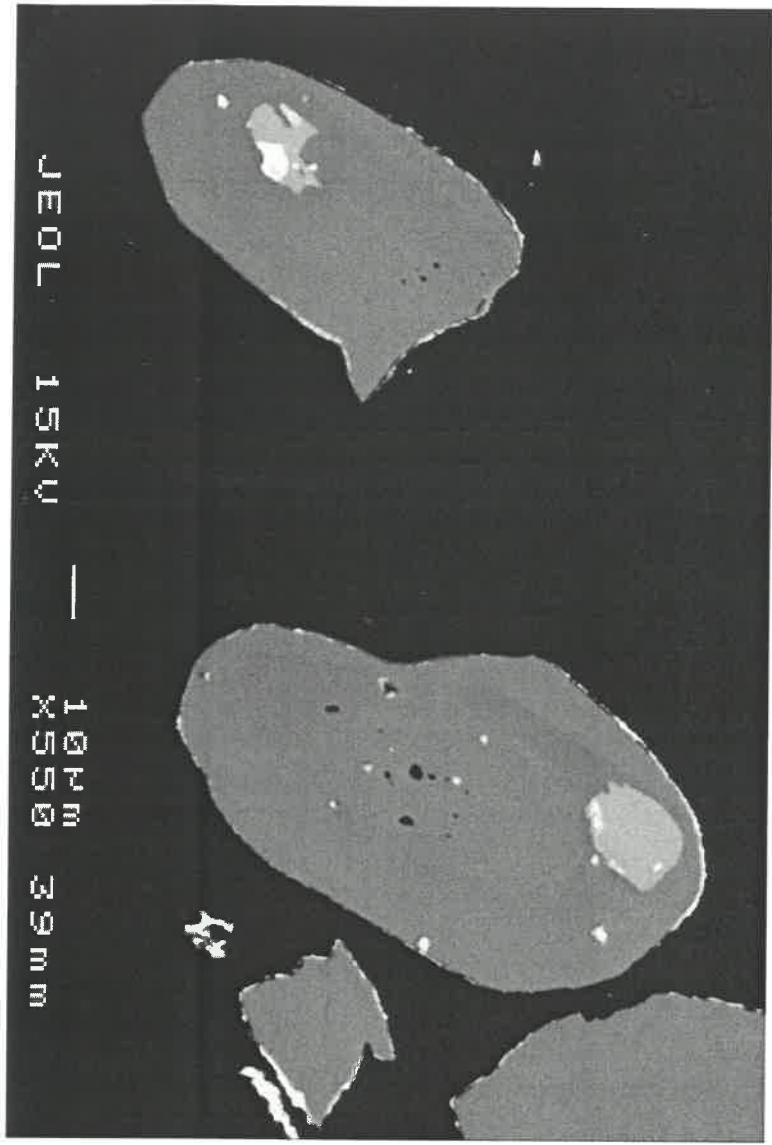
05-89c



#6
+
#7

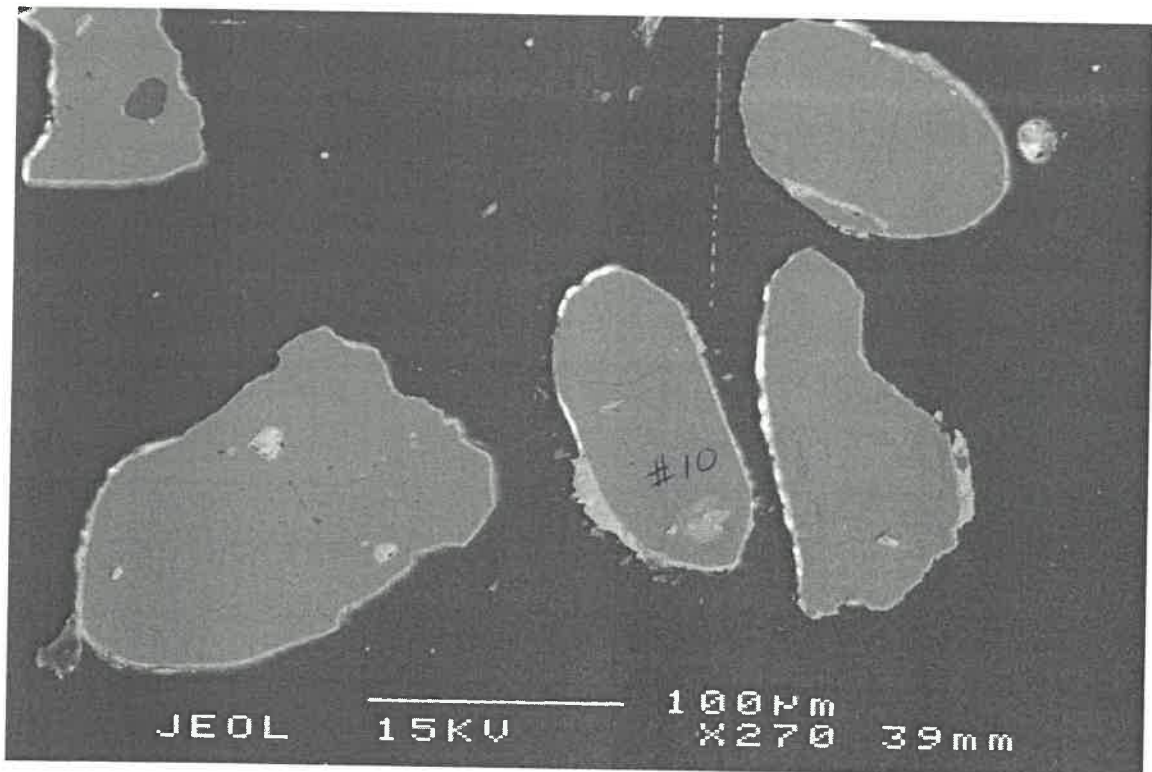
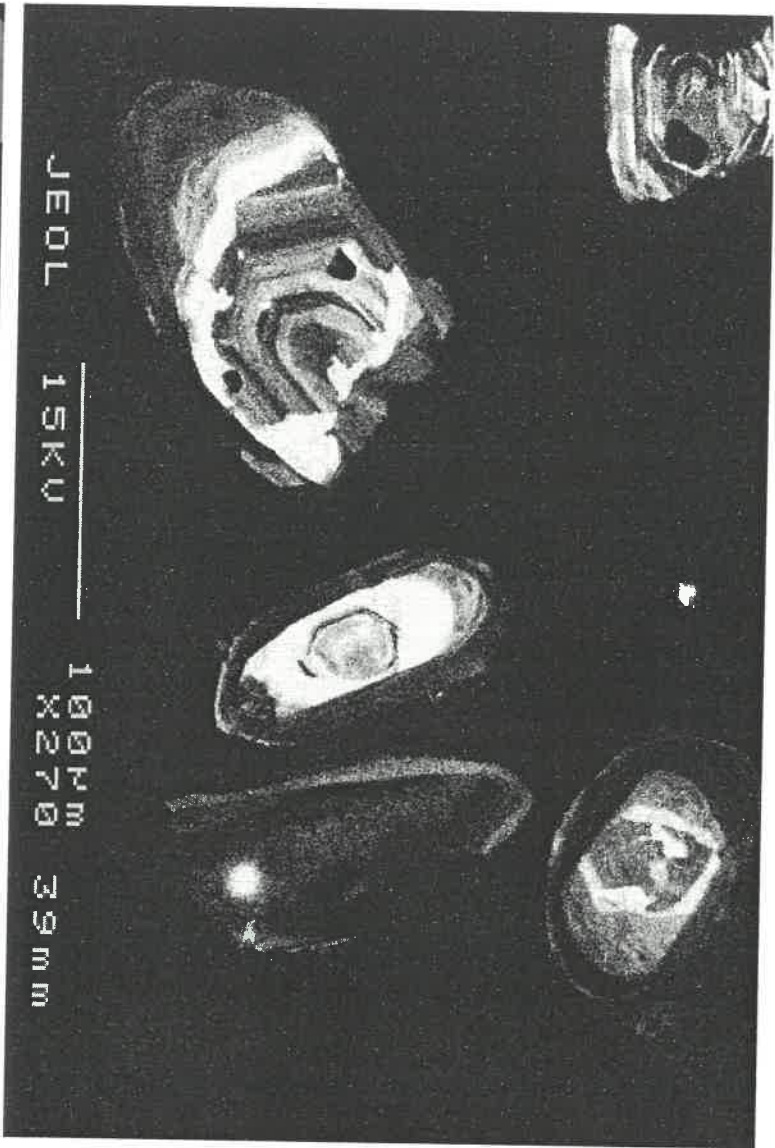
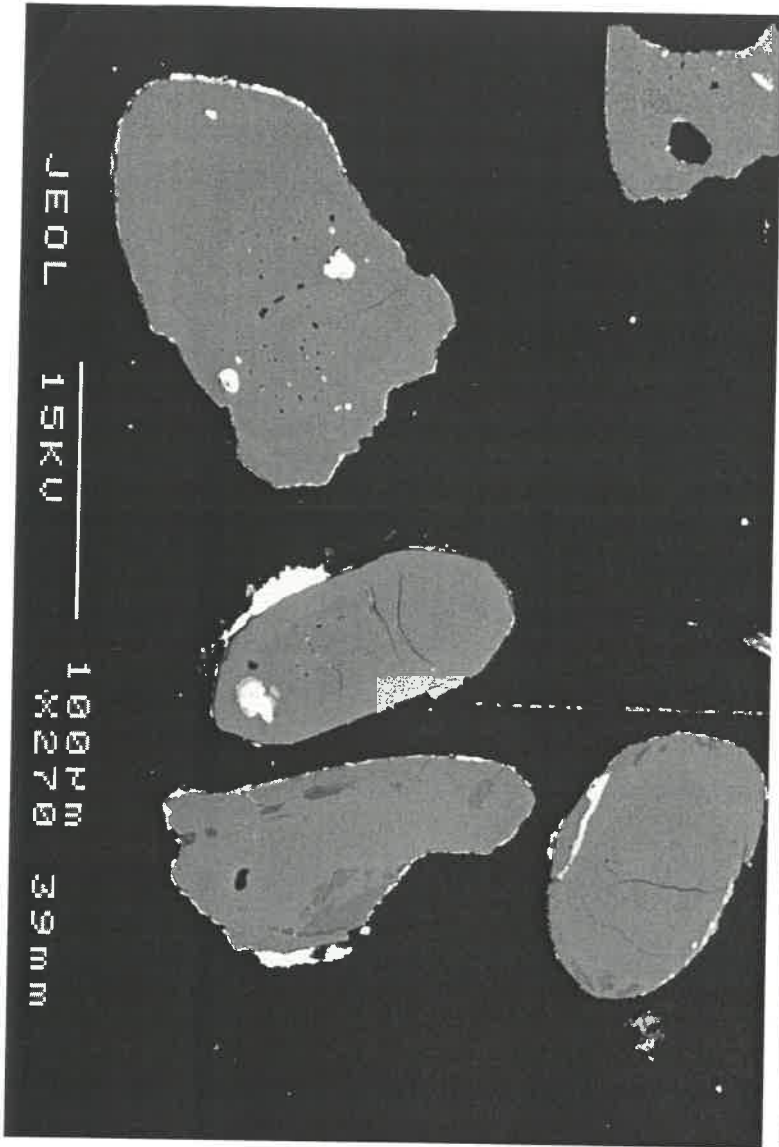


05-89C

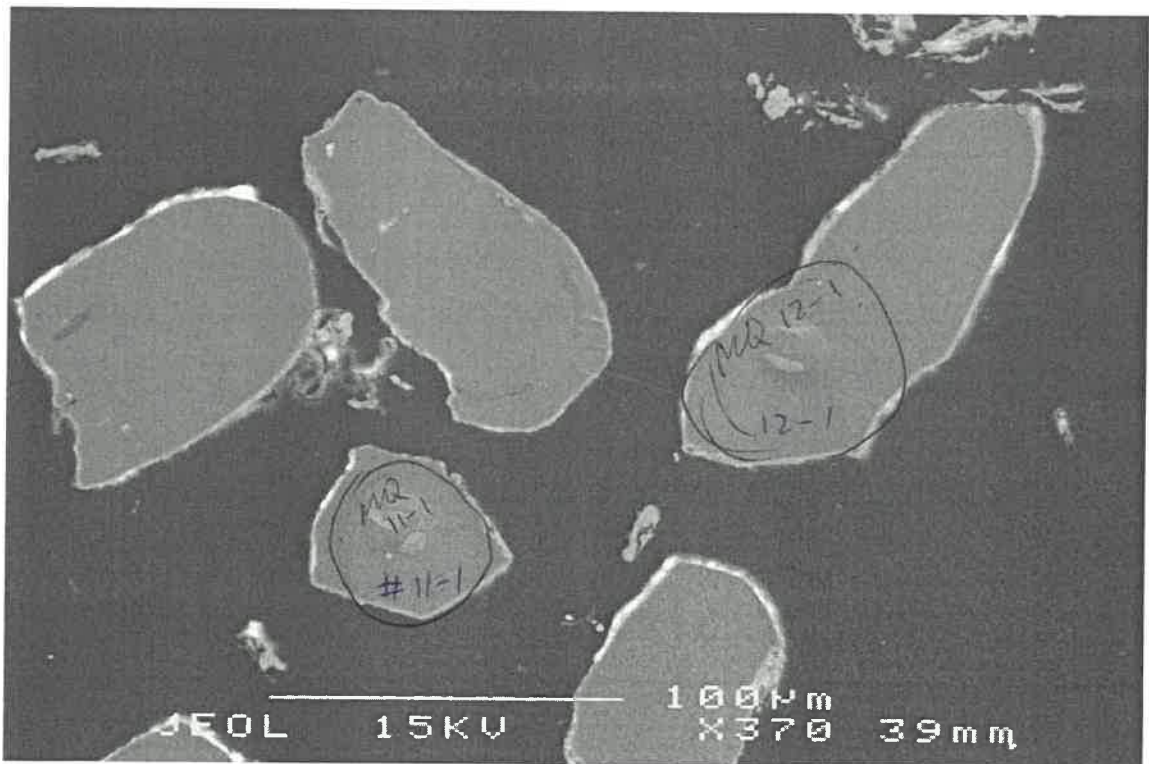
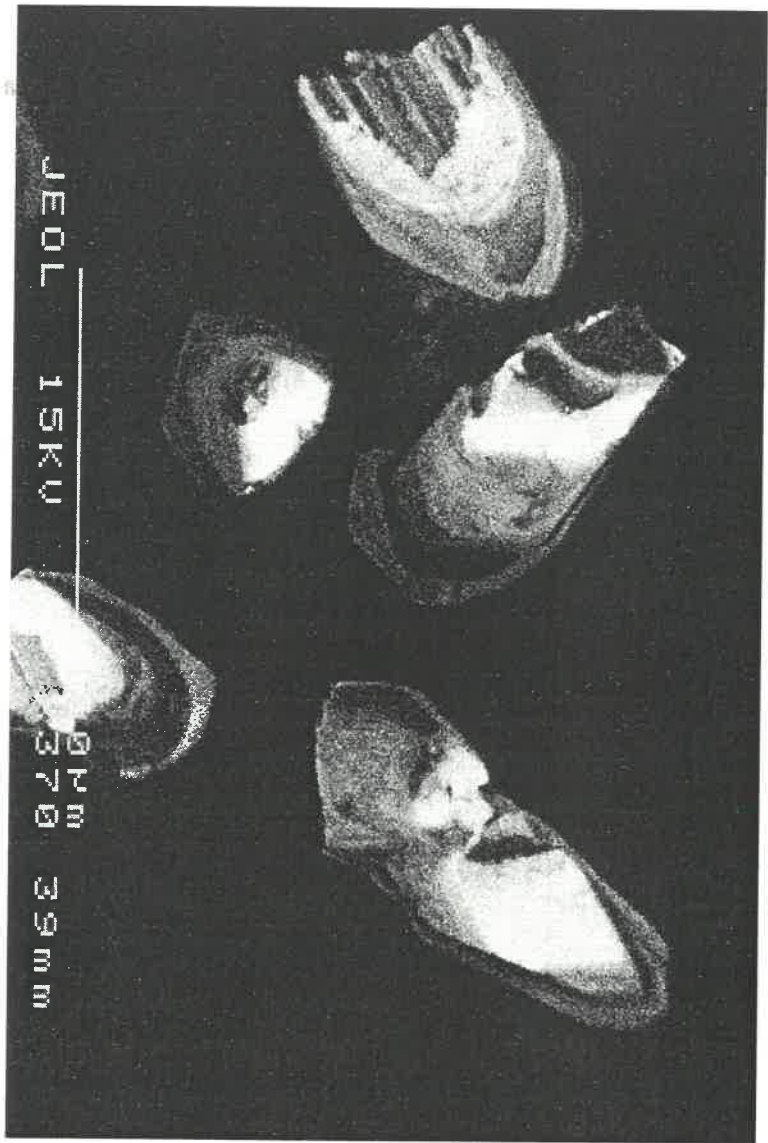
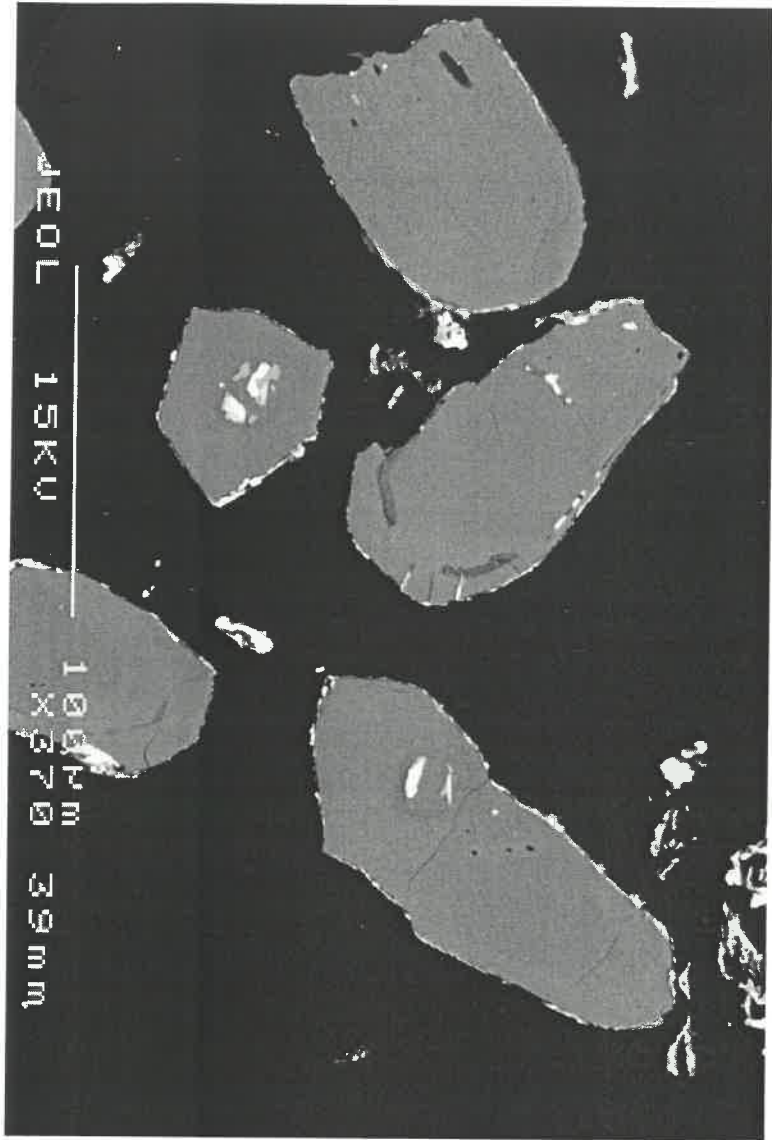


#8
x
#9

OS-89C

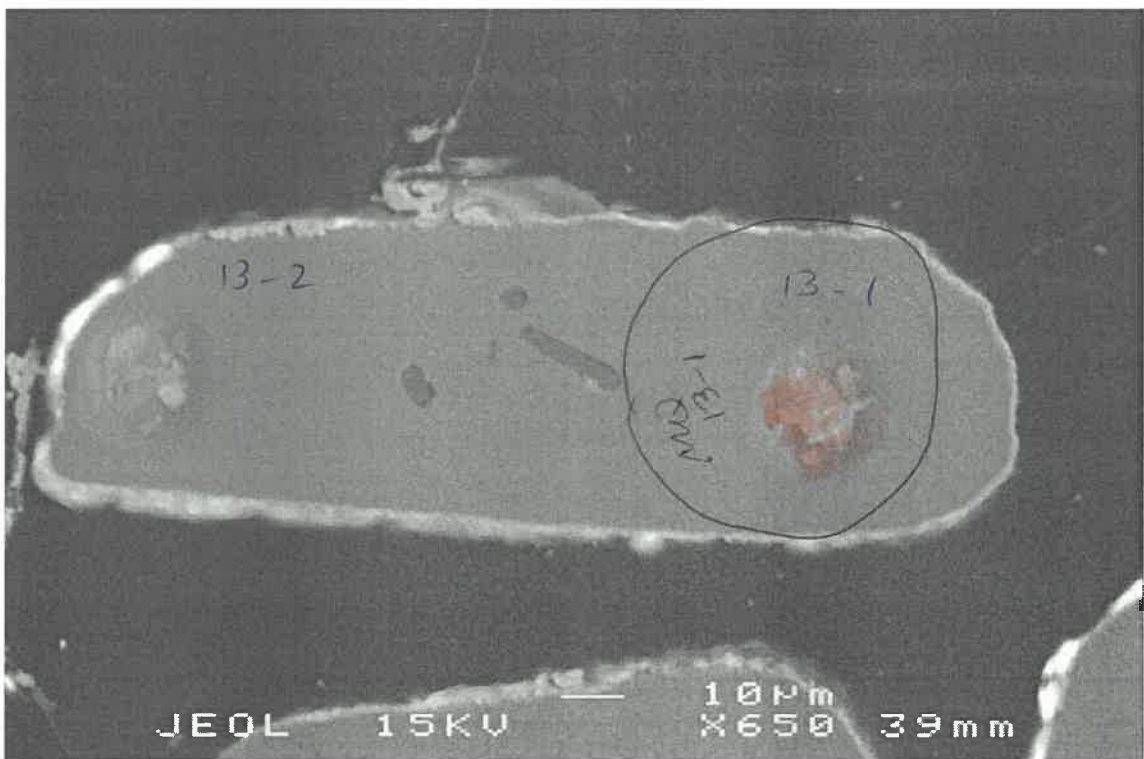
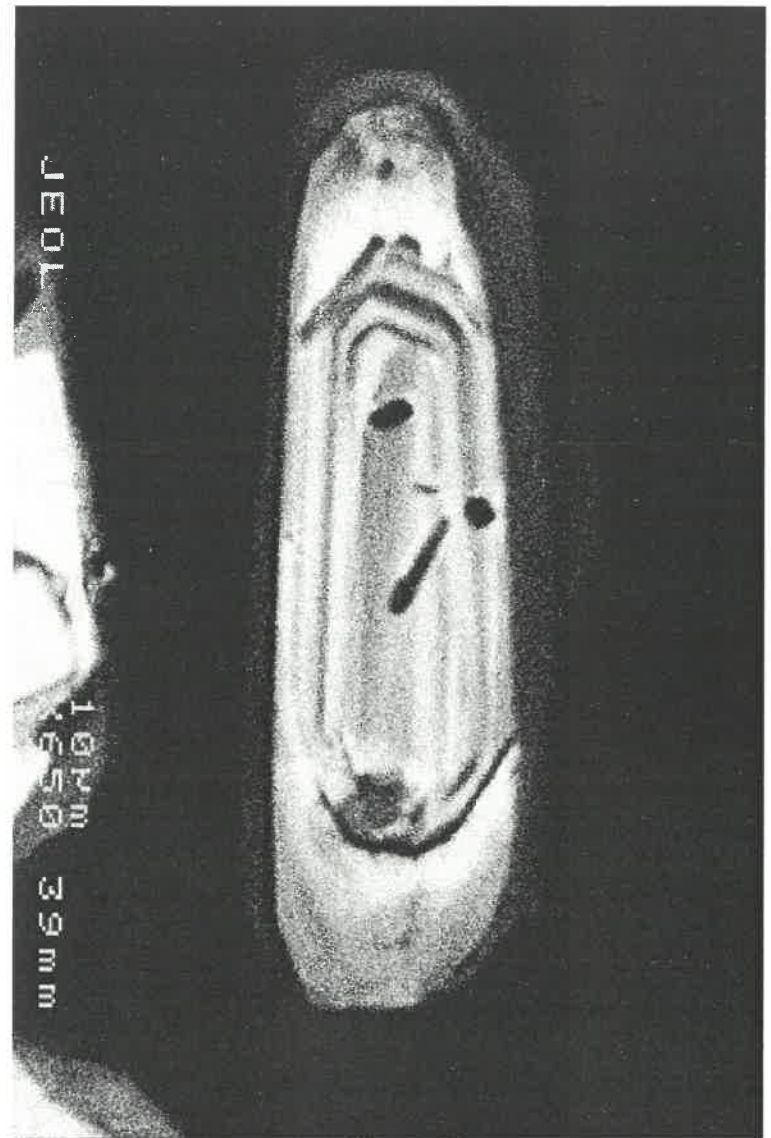


OS-89C



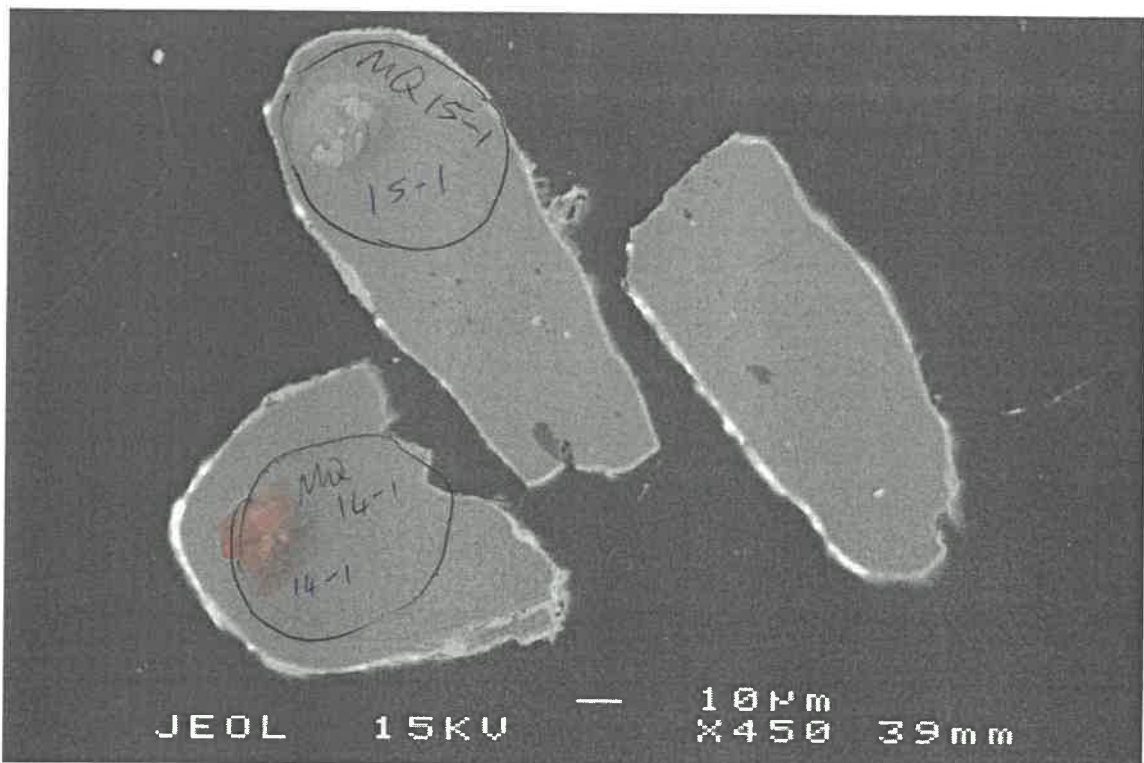
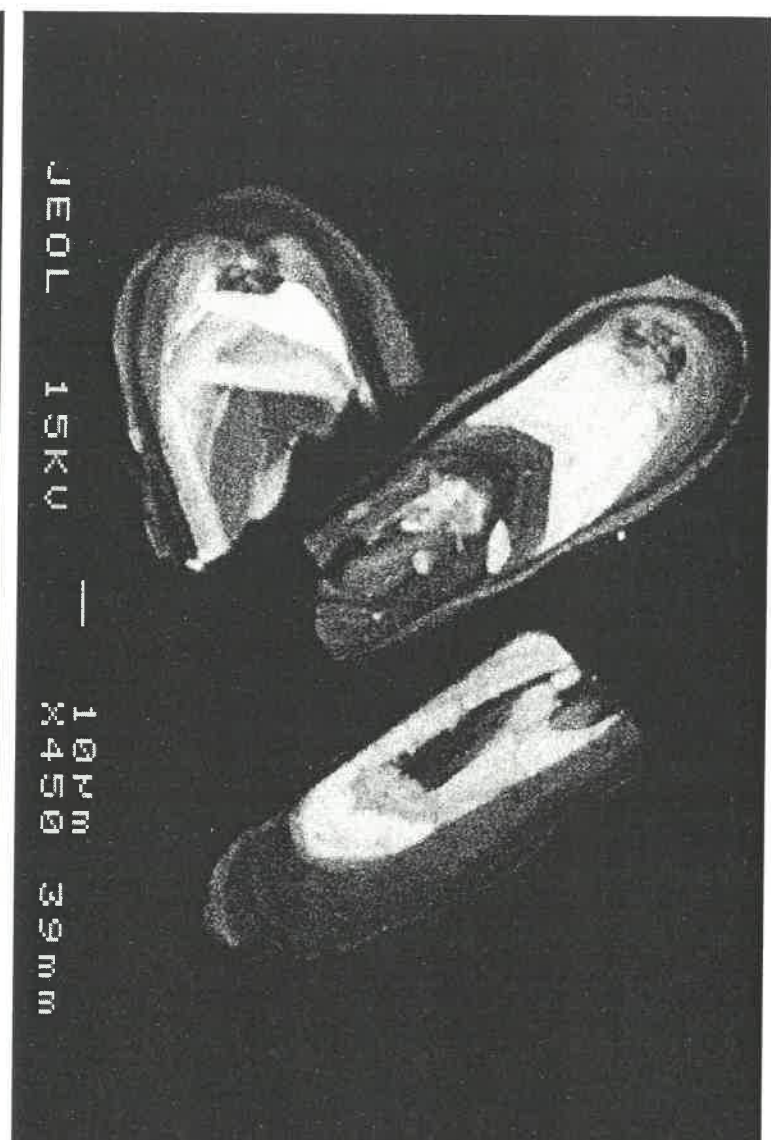
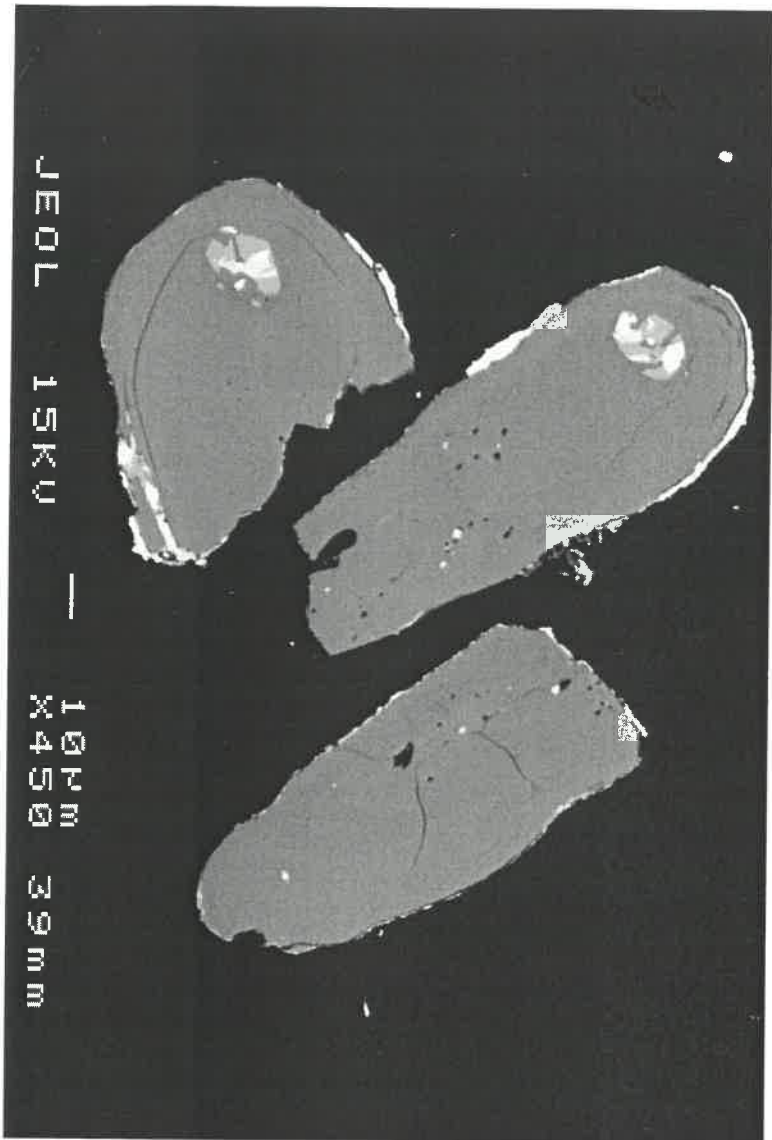
#11
+
#12

M



1

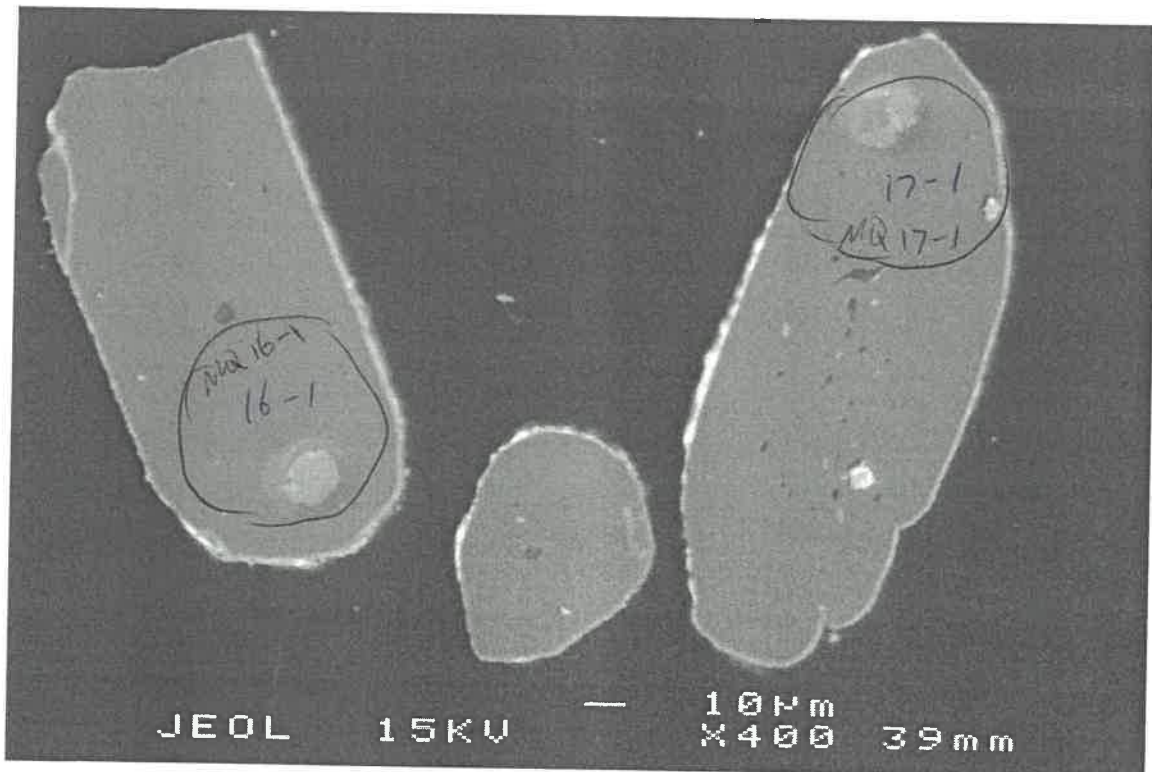
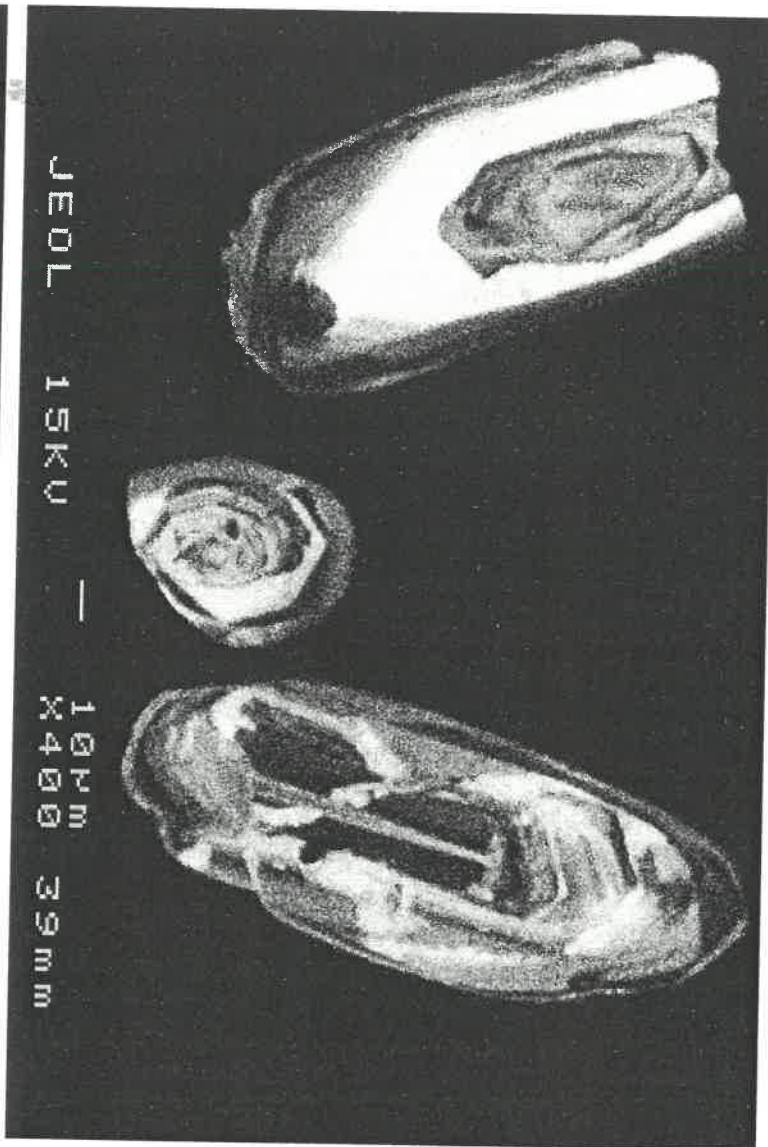
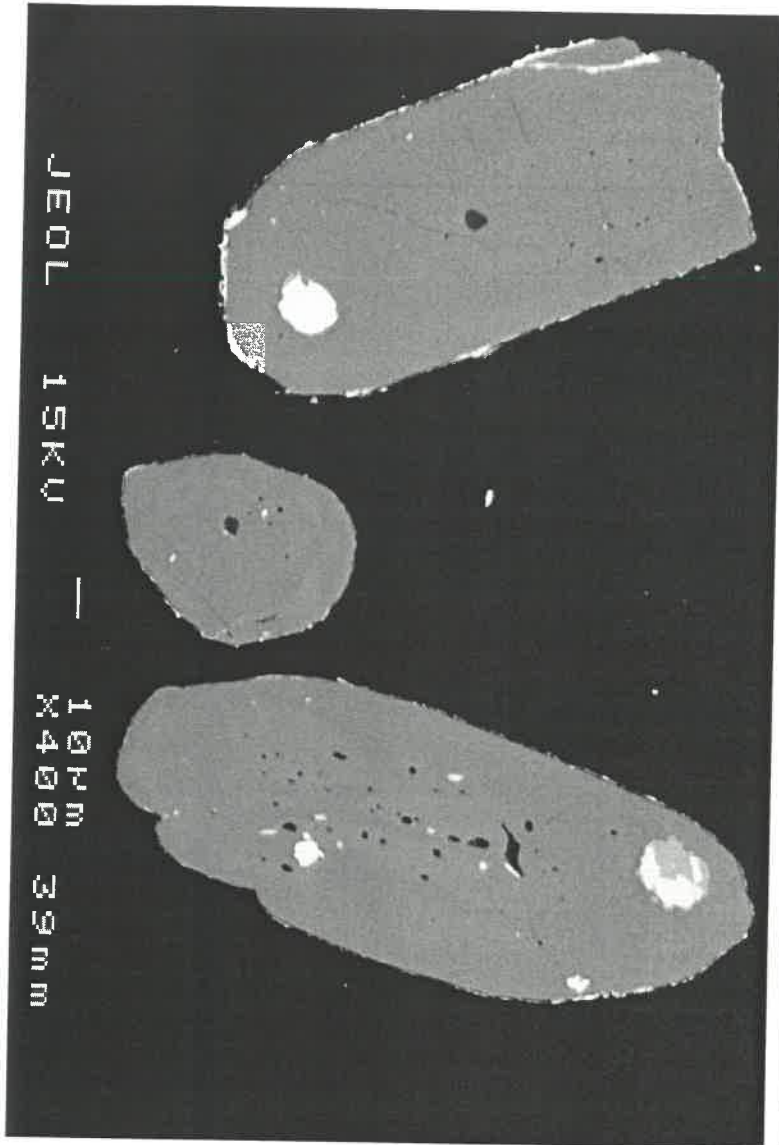
OS-89C



#14 &
#15

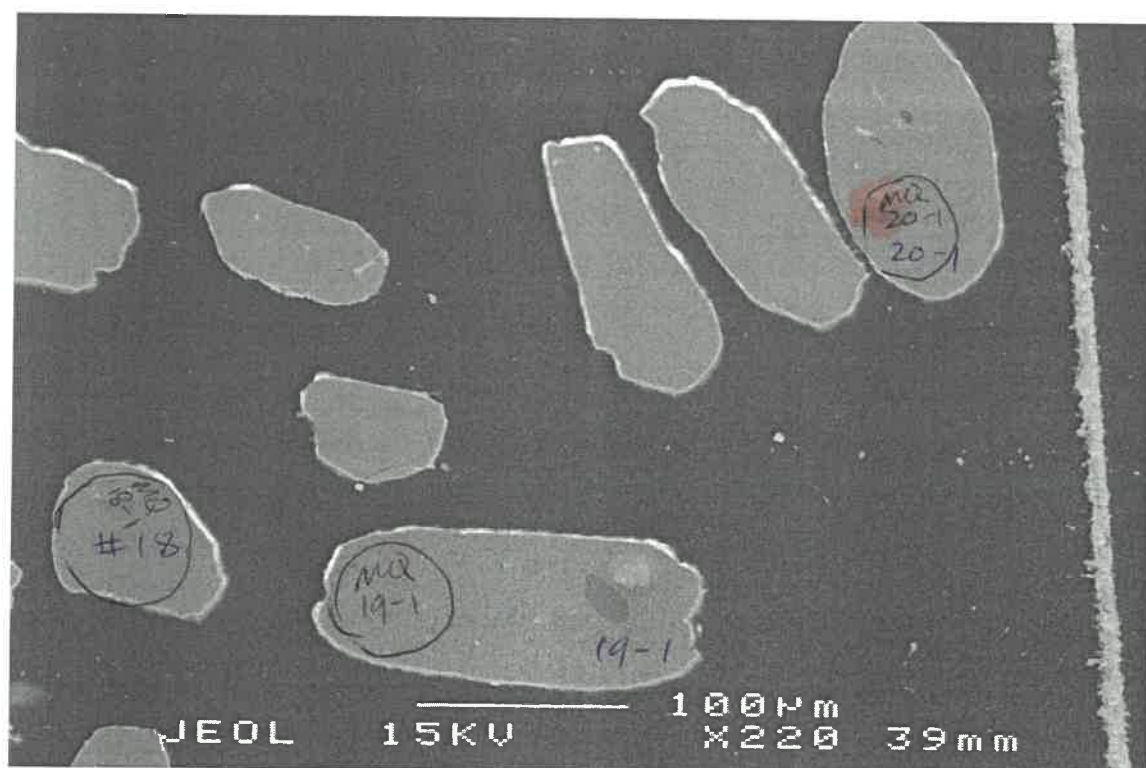
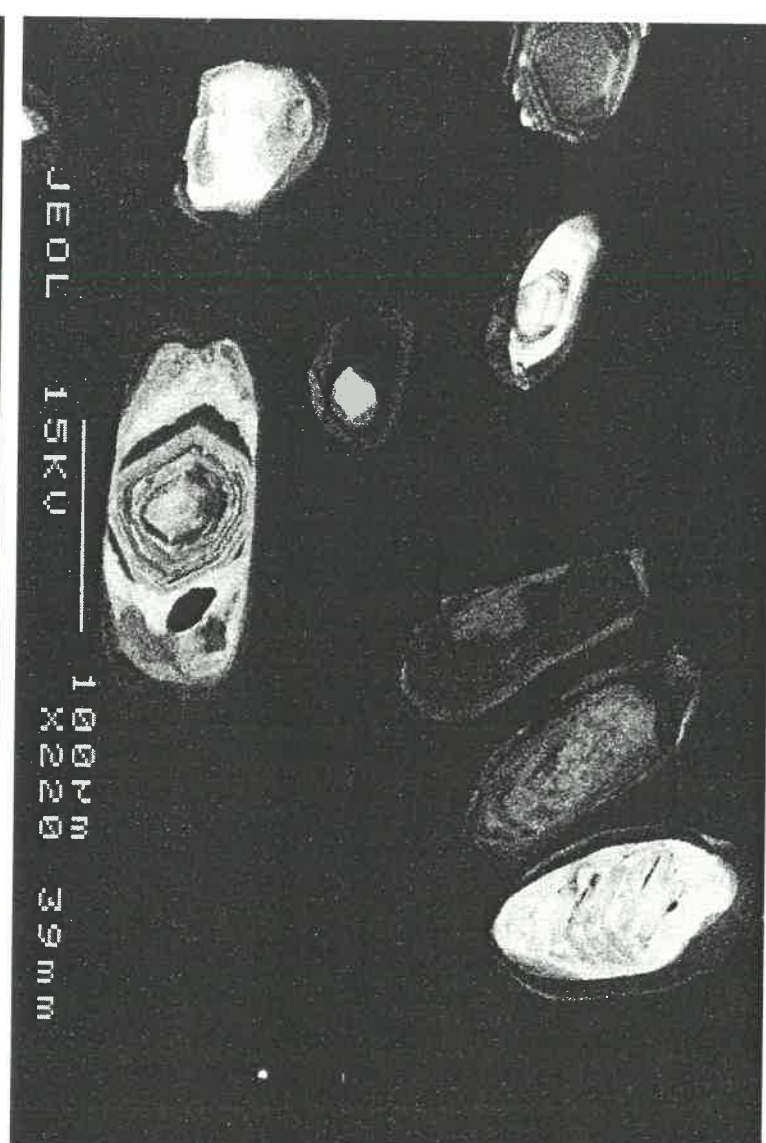
u

05-89c



#16
+
#17

↳



#18
#19
+
#20