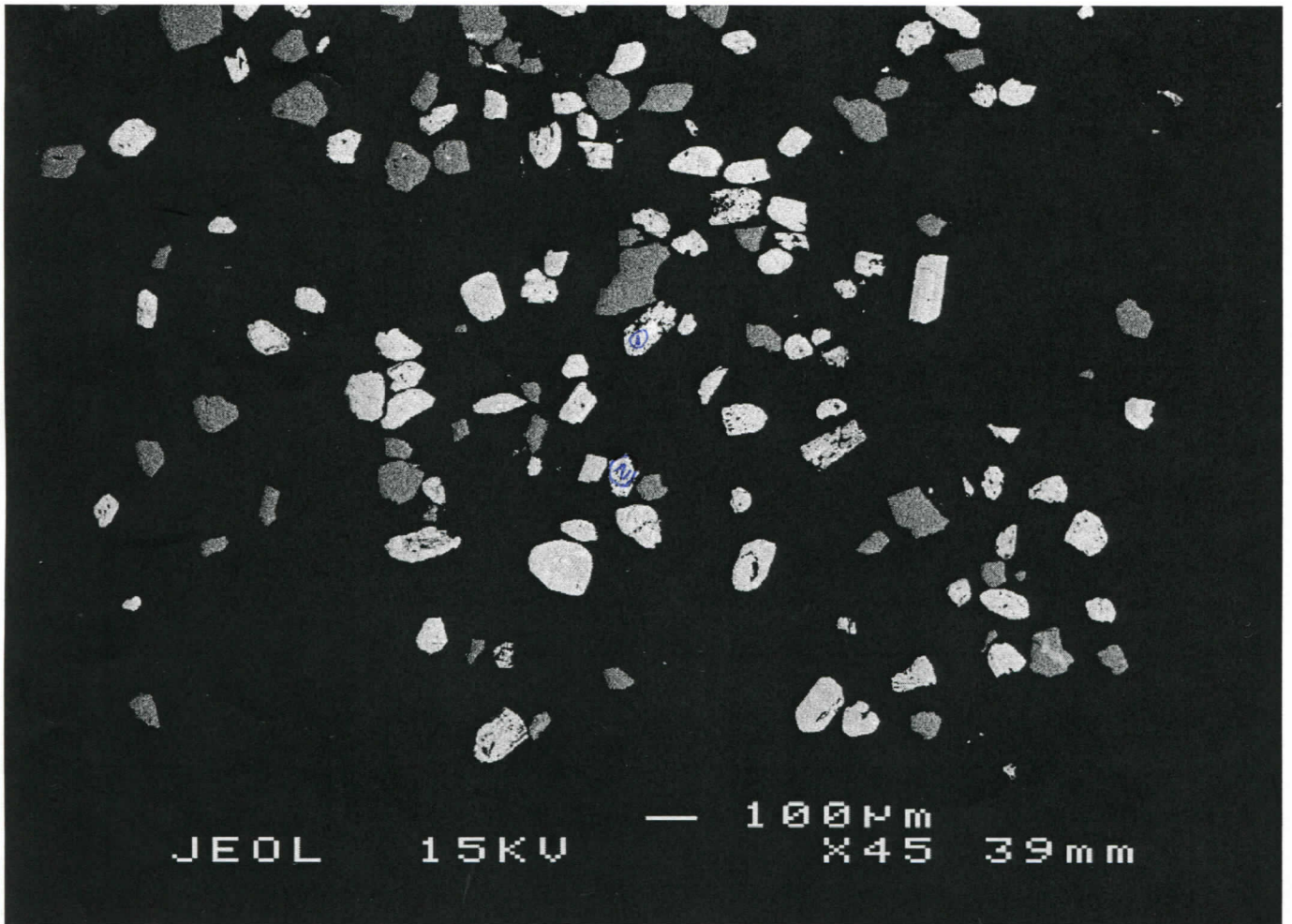


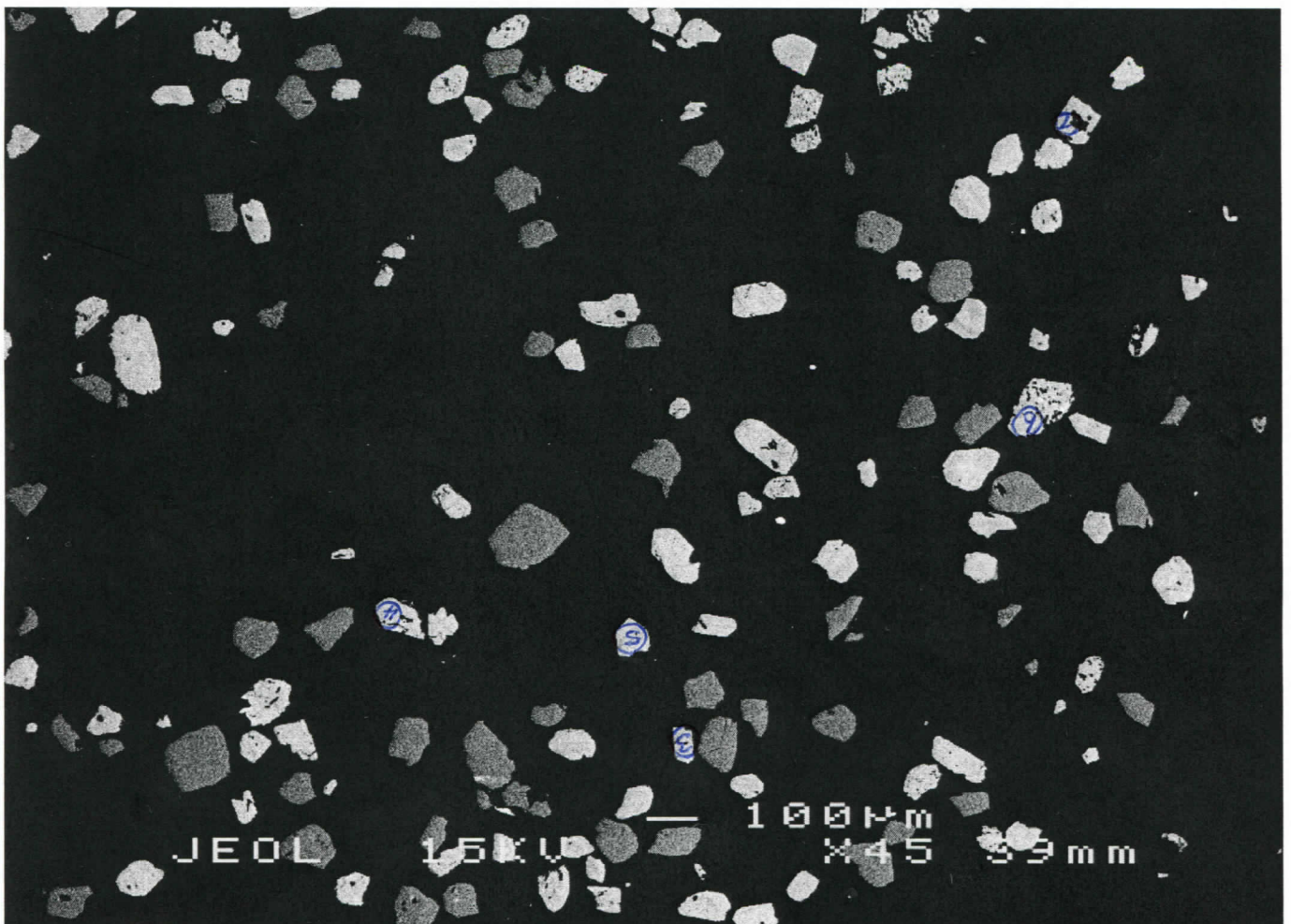
06-23B

24/5/06



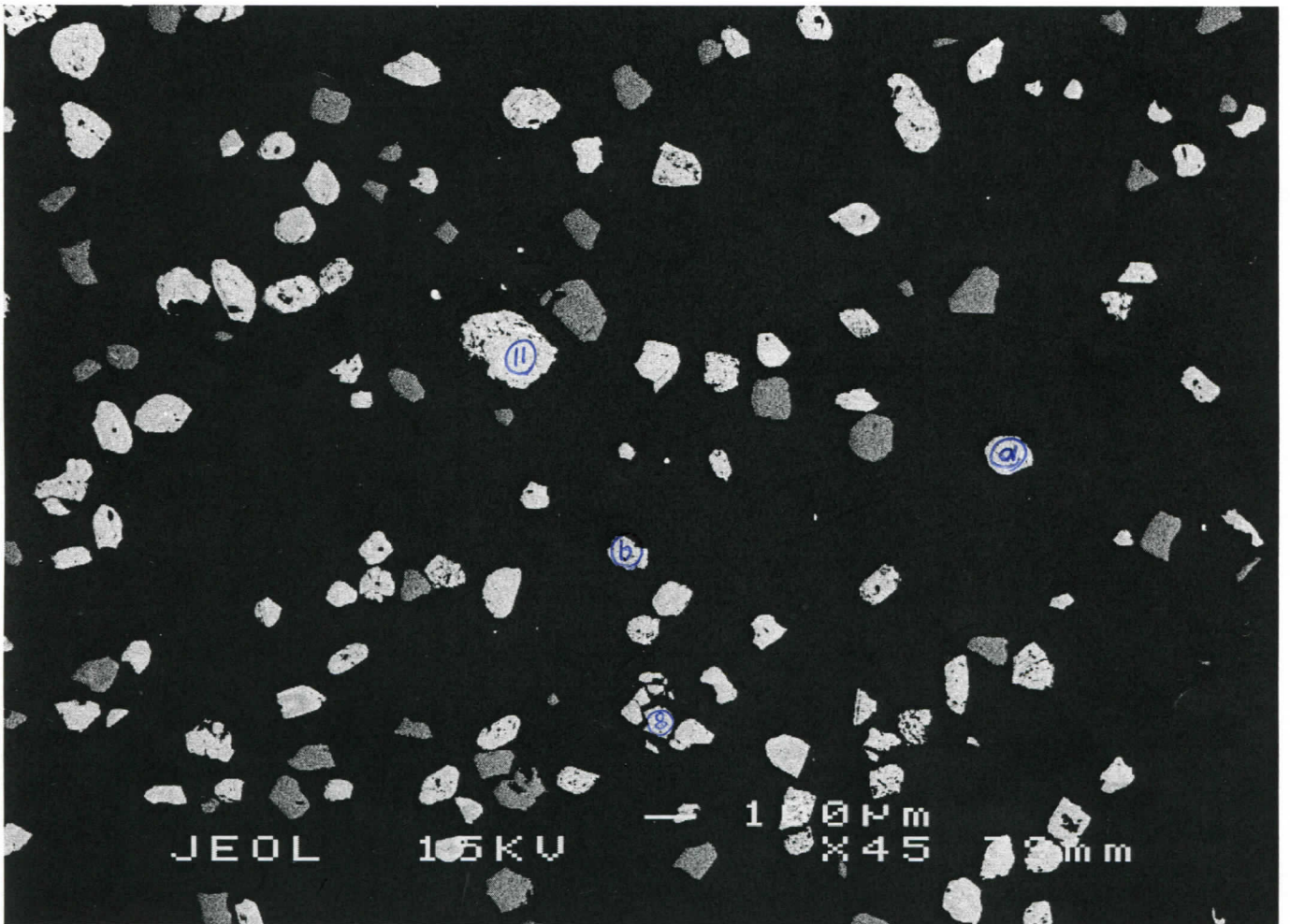
83b

BSE Brightest = ZR



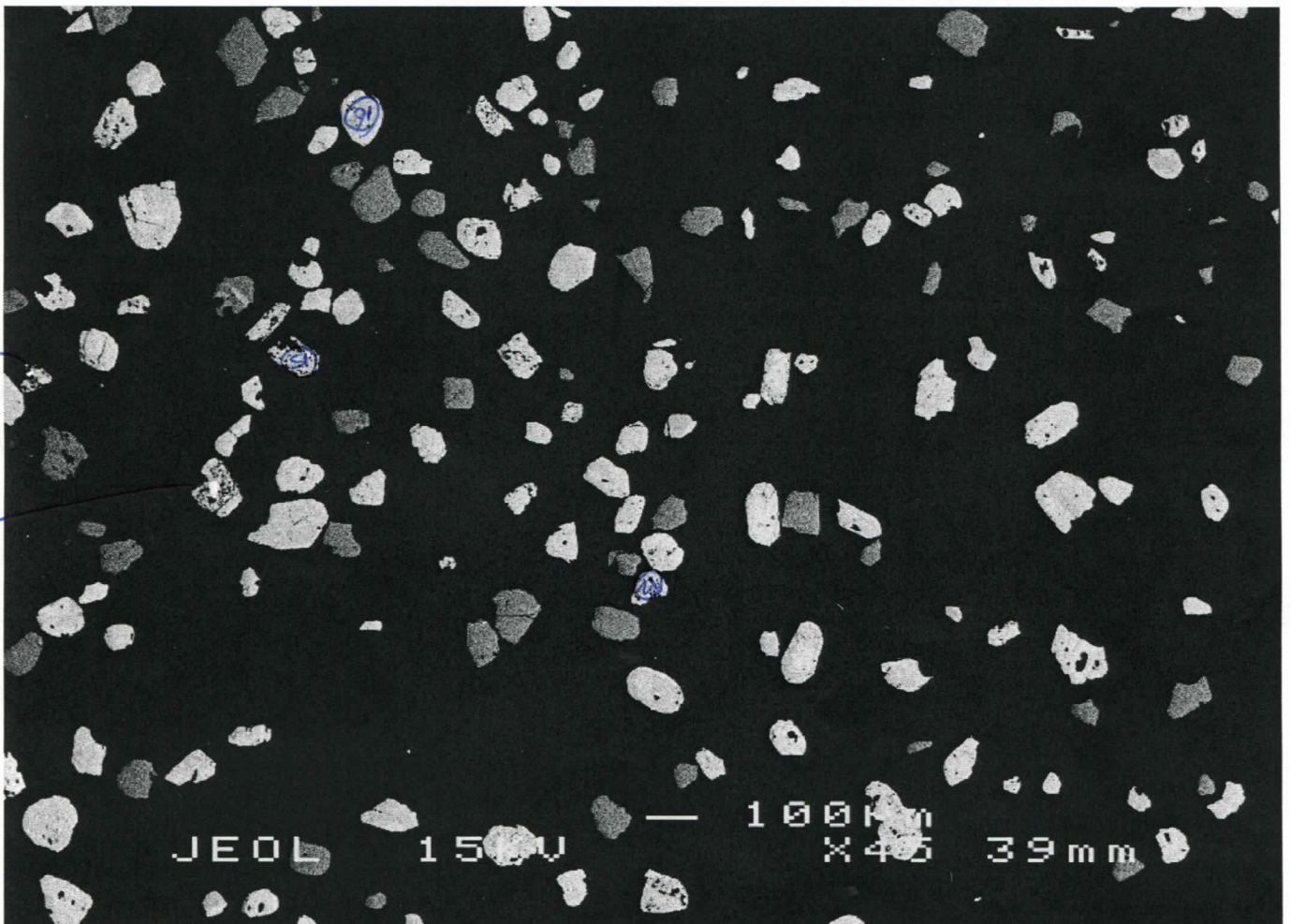
84b

① = Grain identified with m2/xt inclusions (13/9/06) → ditto for following pages.



856

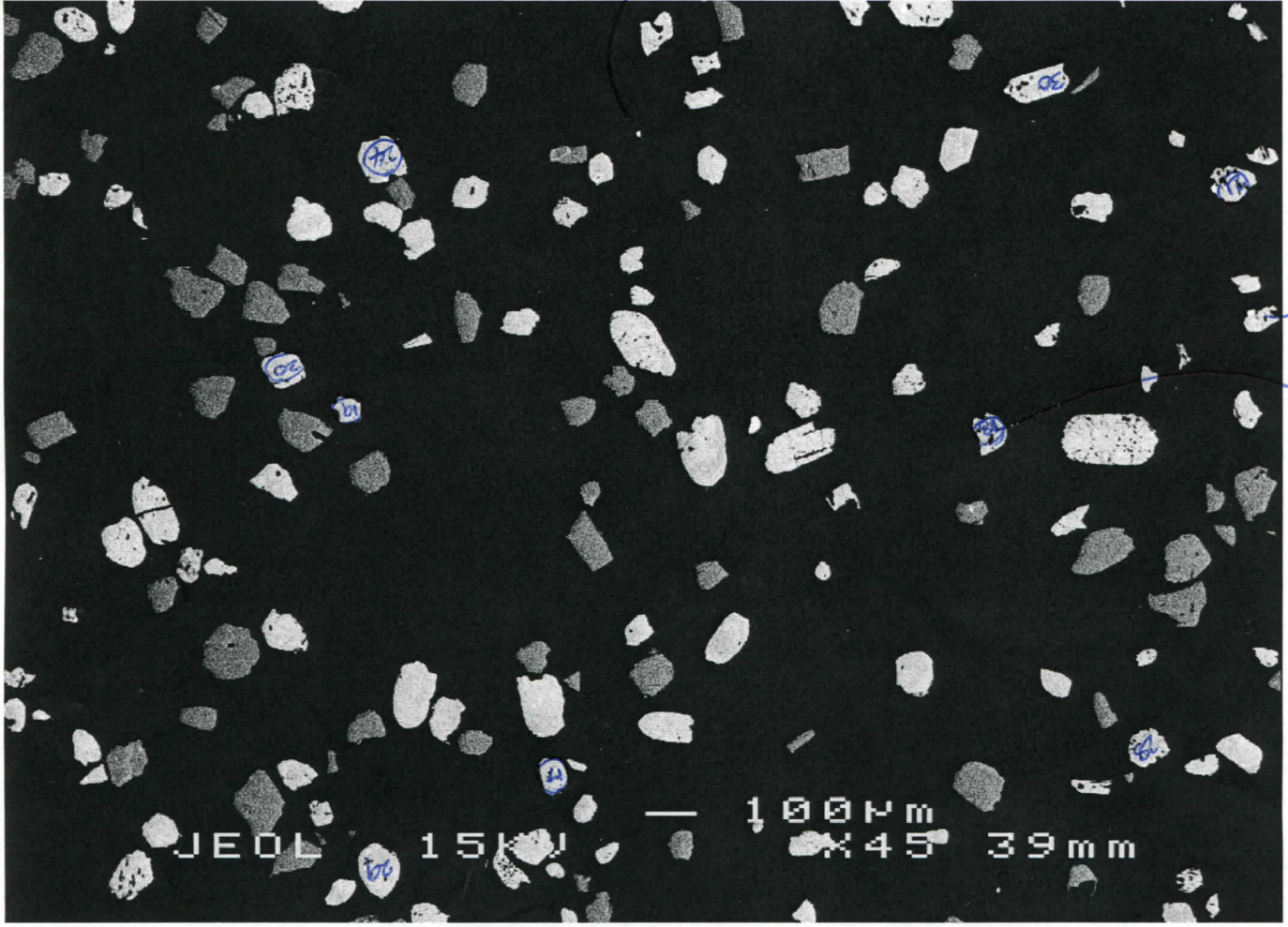
ZR = BSE bright



866

#22 = #19

23



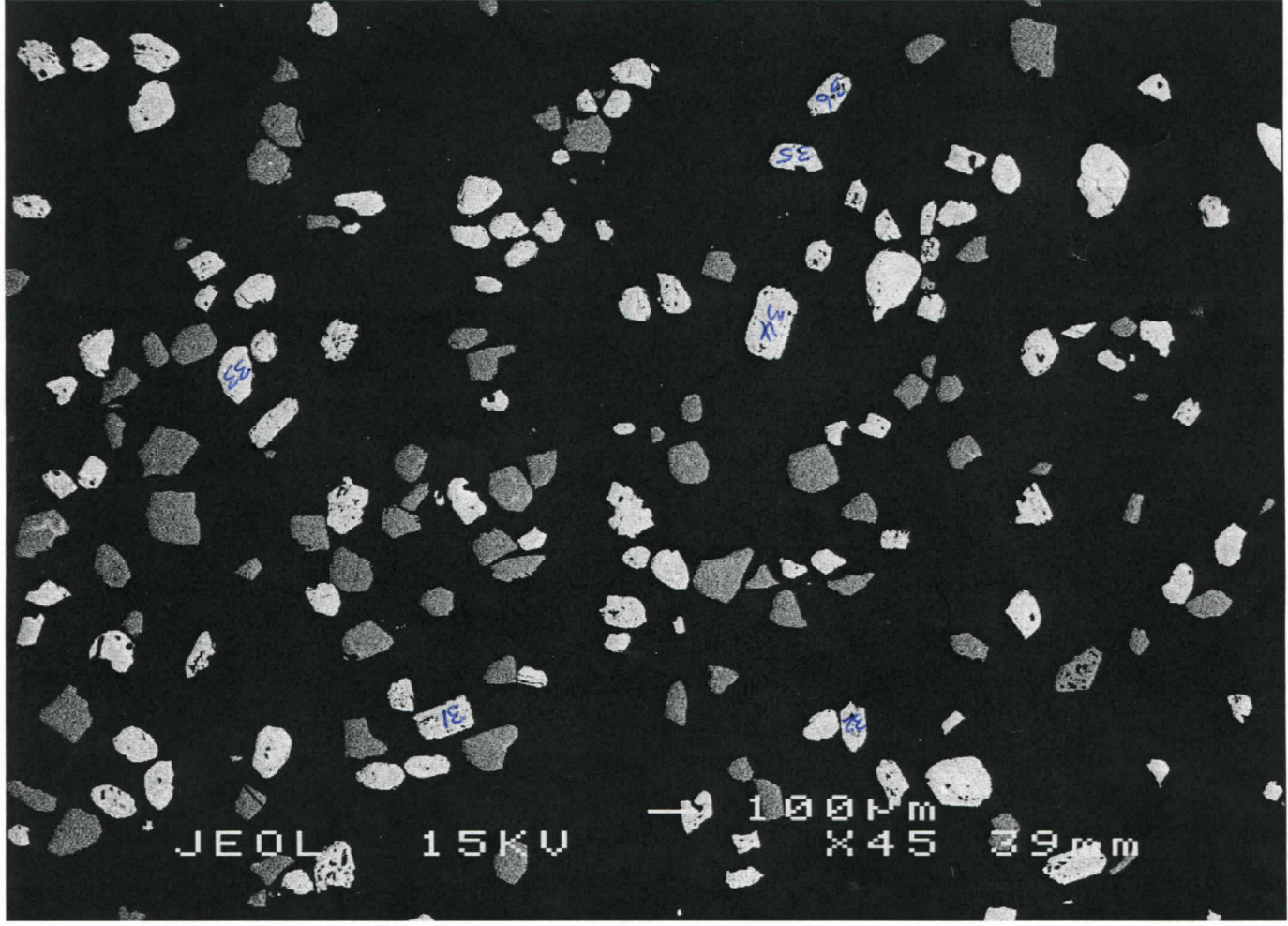
13/10/06
get to
↓

50

96

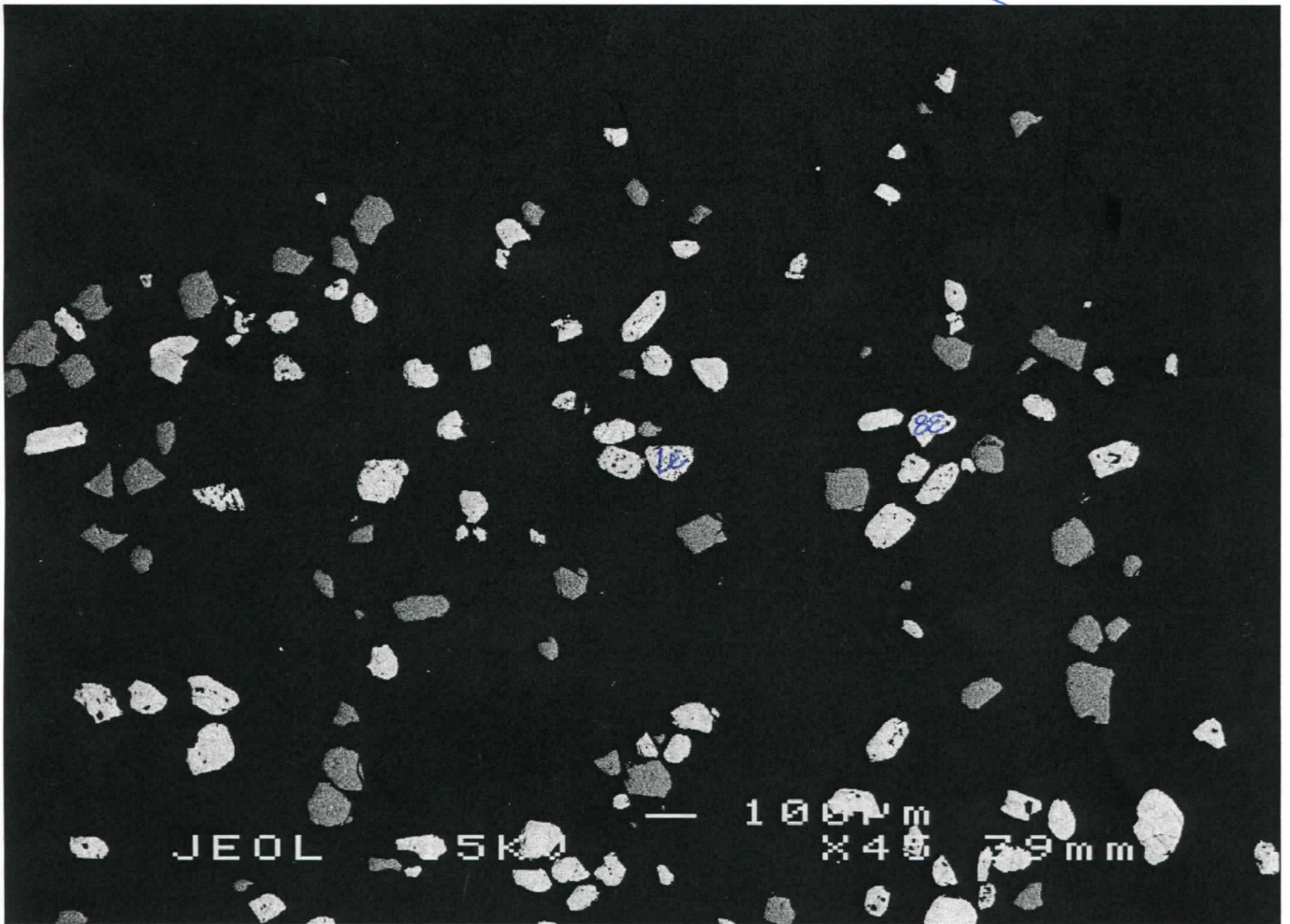
876

ZR = BSE bright



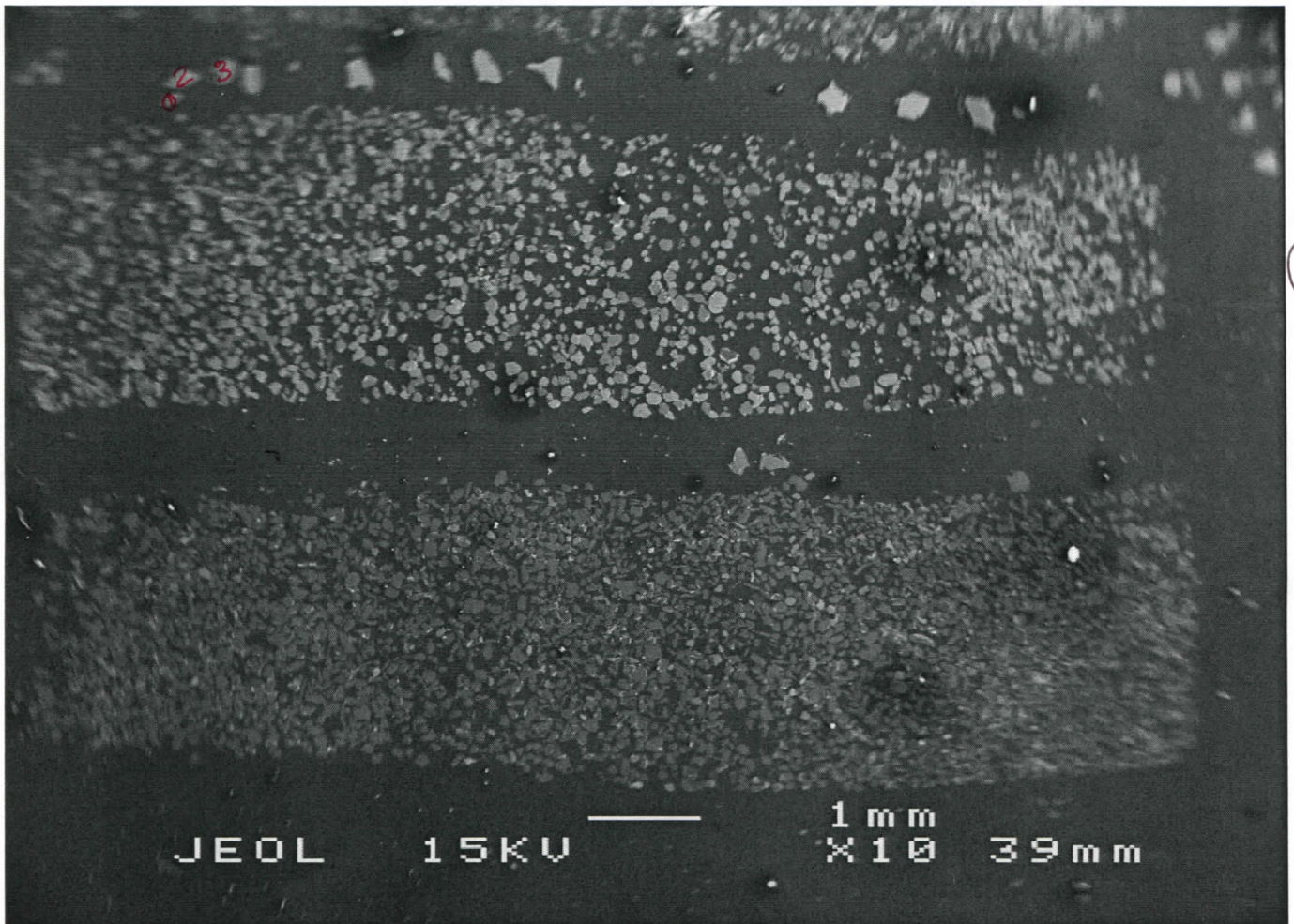
886

COMPARE WITH 01b
SAME FOV → DIFF
CONTRAST



89b

Zr - BSE
bright



←
B

90s

02
↓ 09

03 ↓ 08

0704 06-23B 05
↓ ↓ ↓

24/5/06

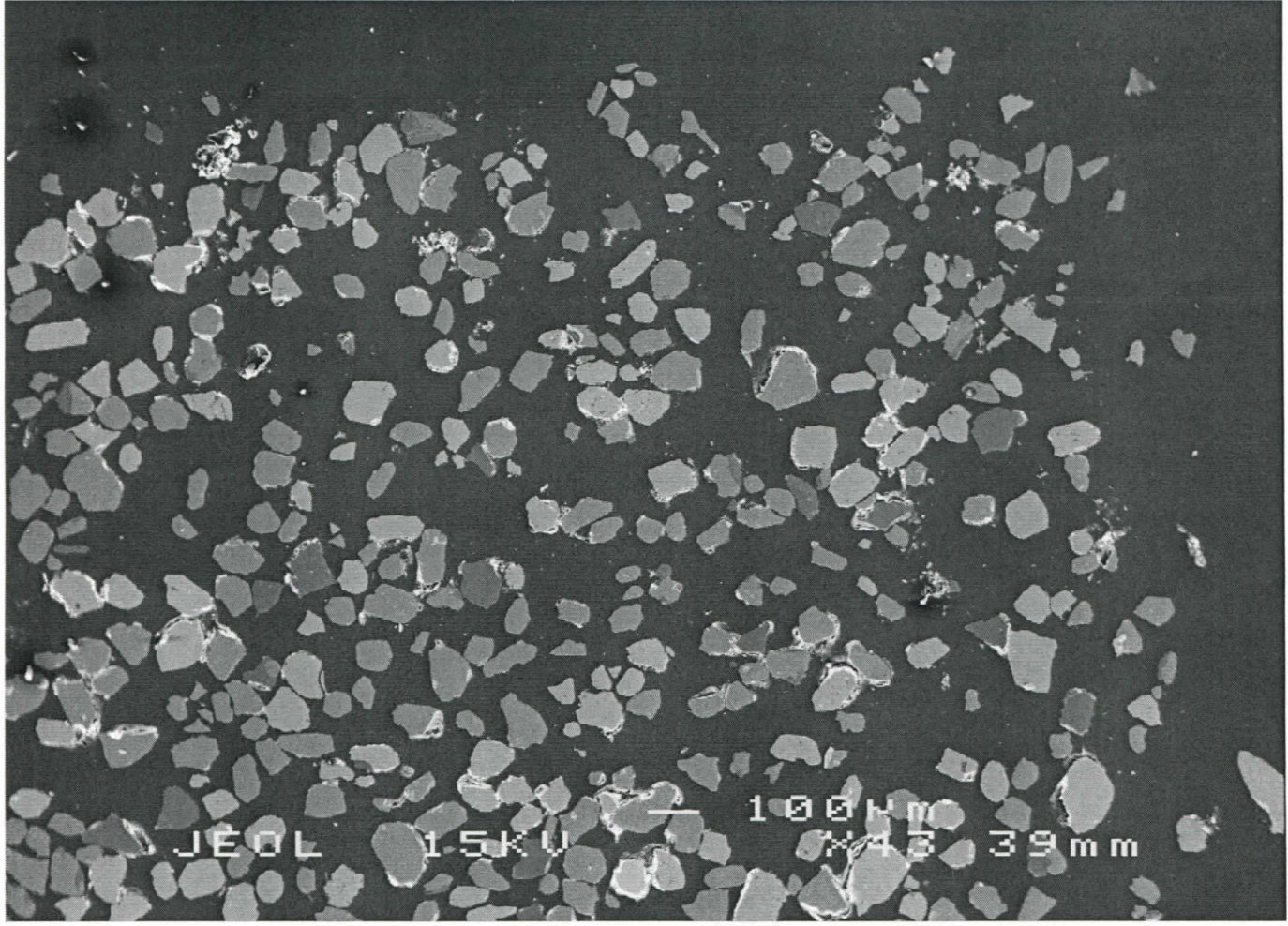
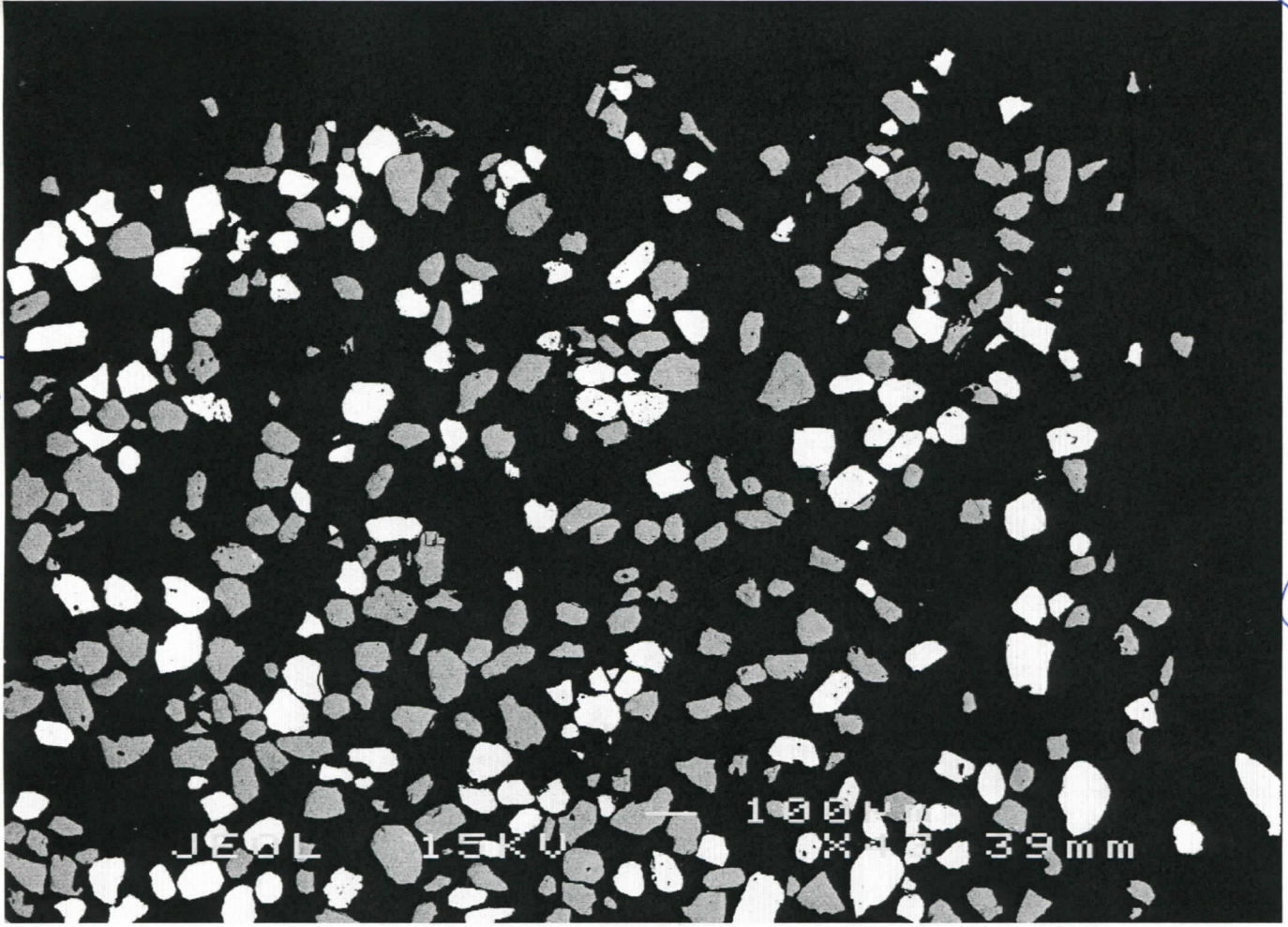
NB
See
89b

02 }
08 →

10 →
11 →

← 06

016
← 12



015

No

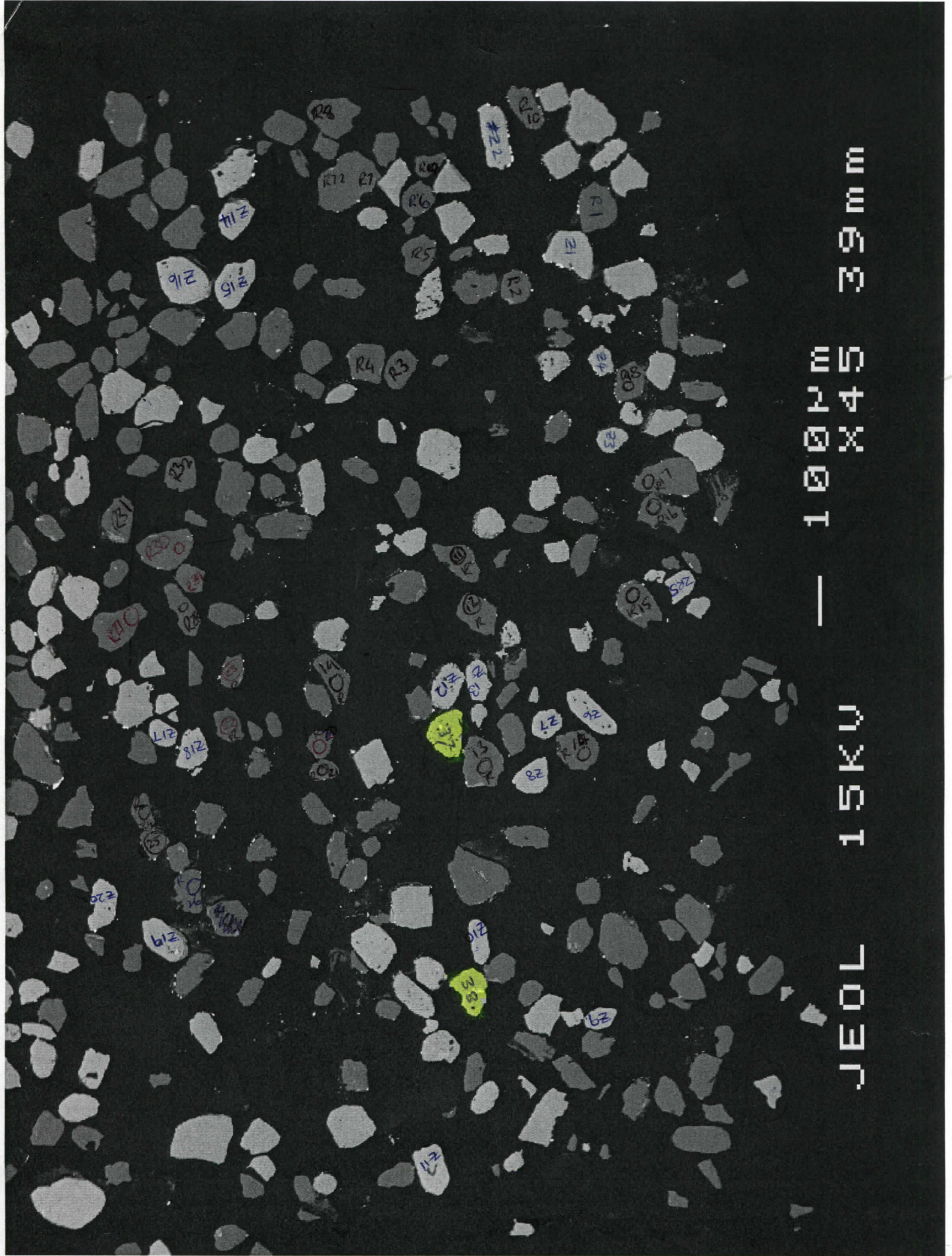
= 200 RUTILE GRANS WITH MZ/XT/URAN INCLUSIONS.

14/9/06

LOW MAG.

06-23B

40



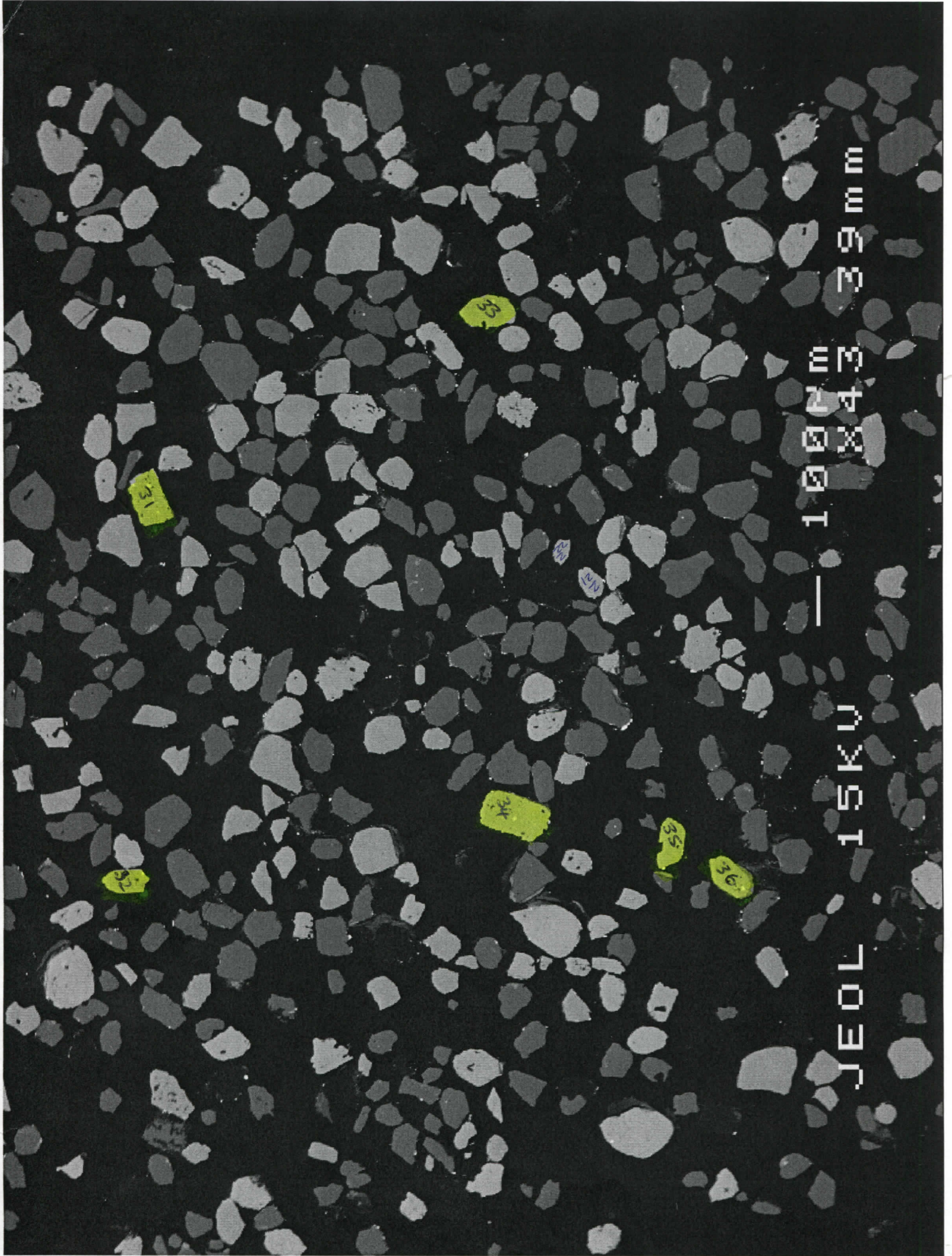
39mm

100X45

JEOL 15KV

91b

91b

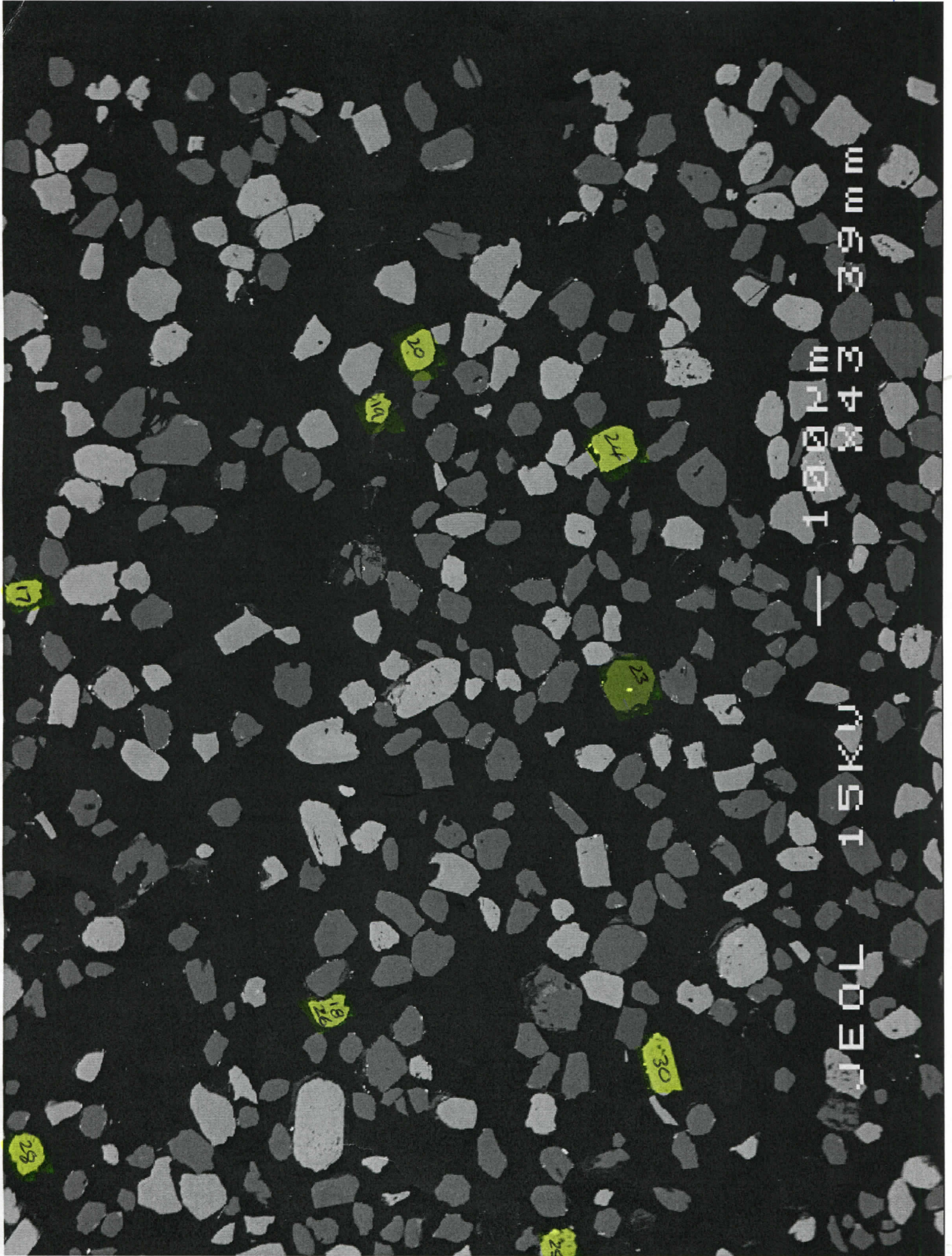


JEOL 15KV X3000 100µm 33mm

↓ 87b

↓ 89b

↓ 88b



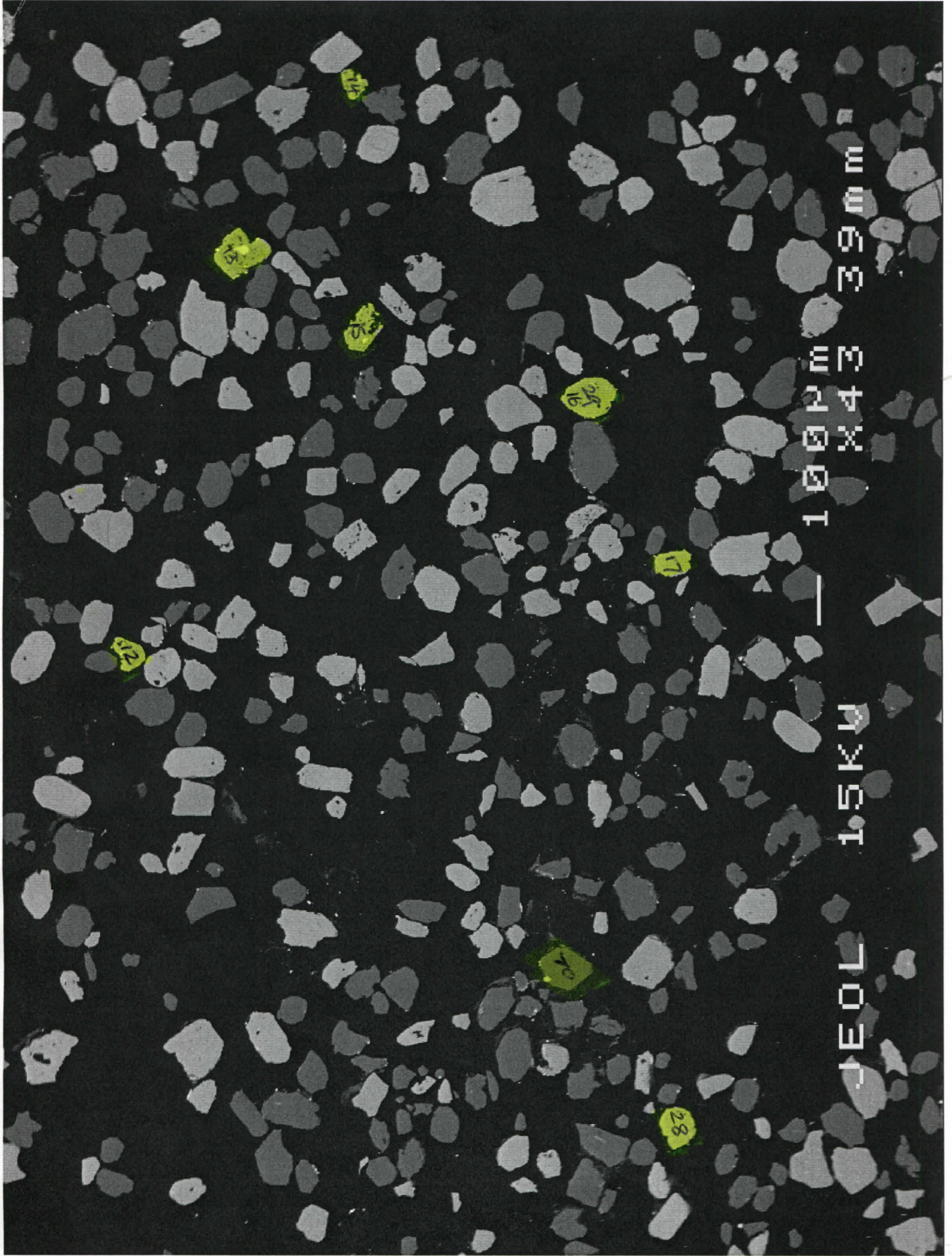
100µm 3mm

15KV 10E01

12+52

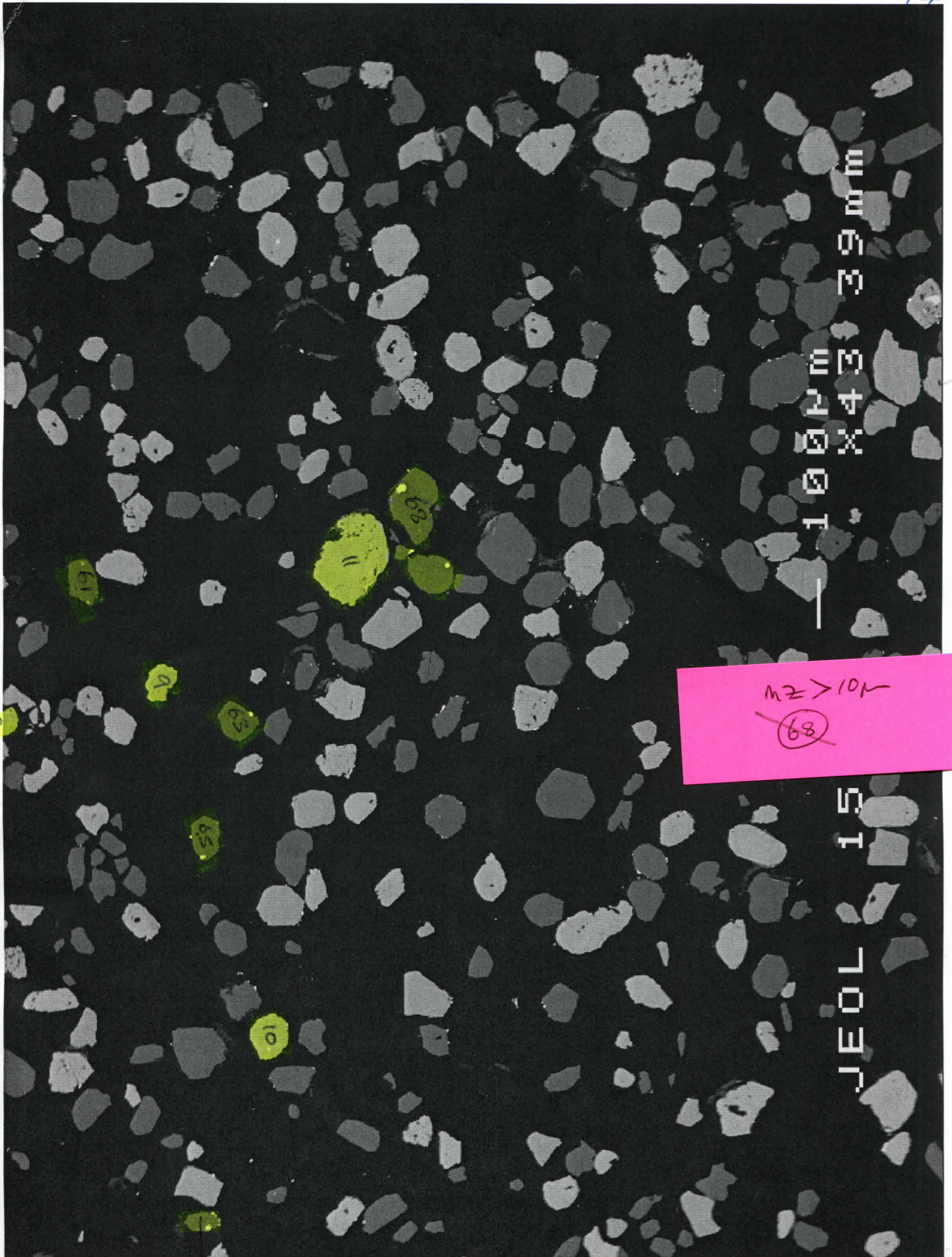
88A

87B



JEOL 15KV — 100PM 33mm

↑ 866
↓ 876



100µm 3.9mm

101 < 7µm
~~89~~

JEOL 15 SI 7031

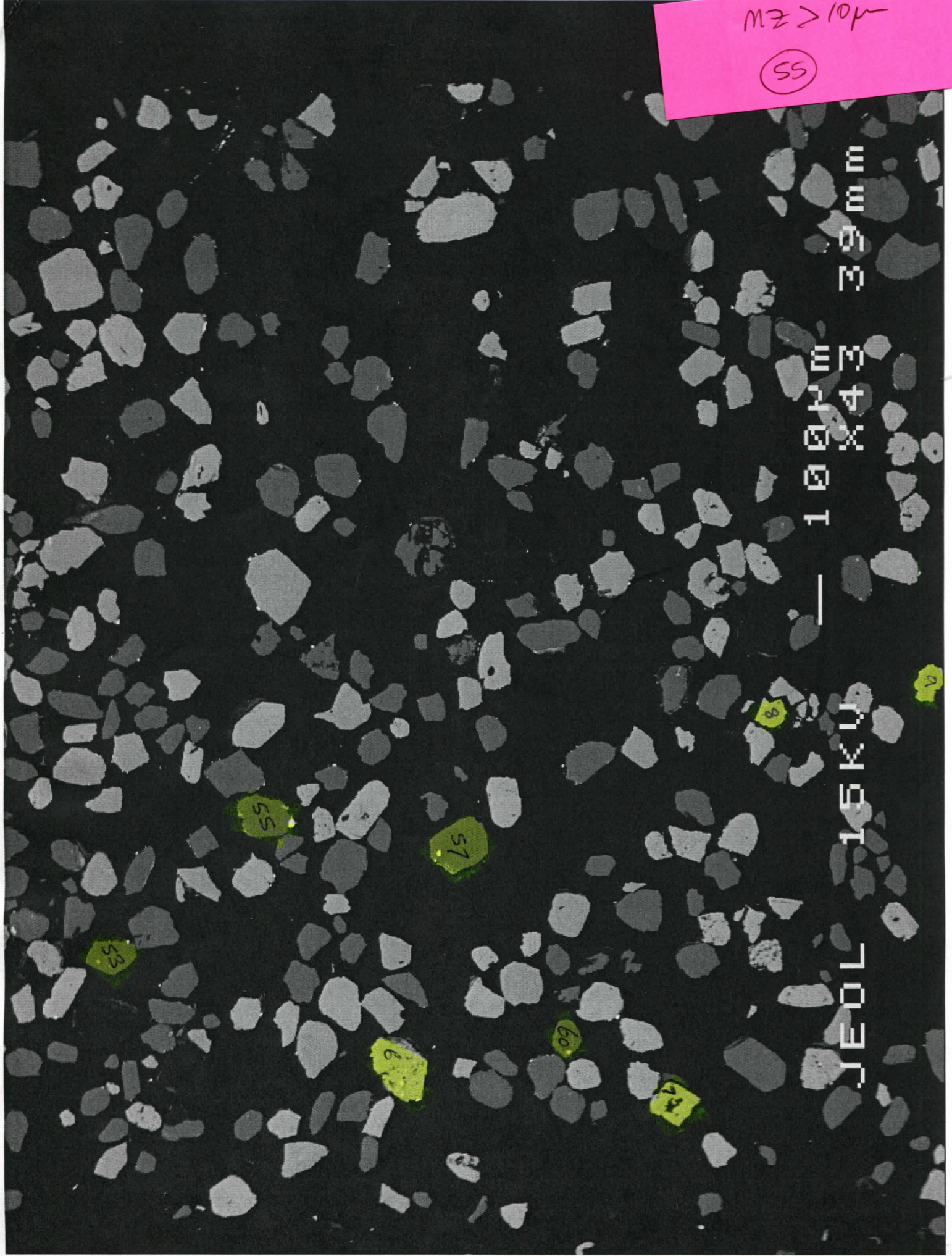
99-

868
↓

858
↑

MZ > 10μ

SS



33mm

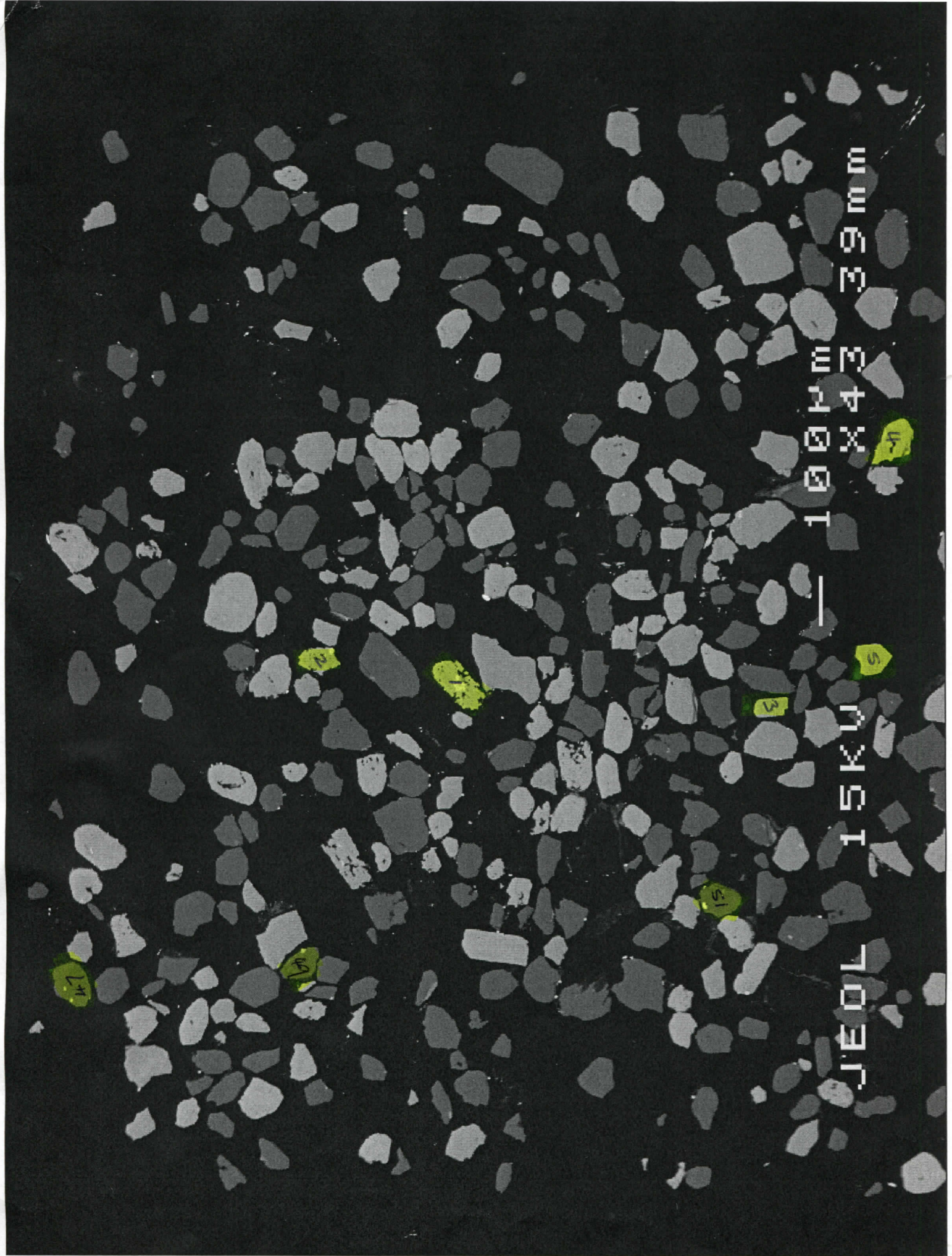
10043

15KV

JEOL

856 ↓

848 ↓



100X43 39mm

MSI 15KV

7097

↓ 836
↑ 846