

06-63

6/7/06

8-100 7-1

1#

B = KB91

NBS 611

D23

~~SDA~~

A = KBD9

1mm X12 39mm

BR266

1-10

2-10

03-1

1#

SDA

JEOL 15KV

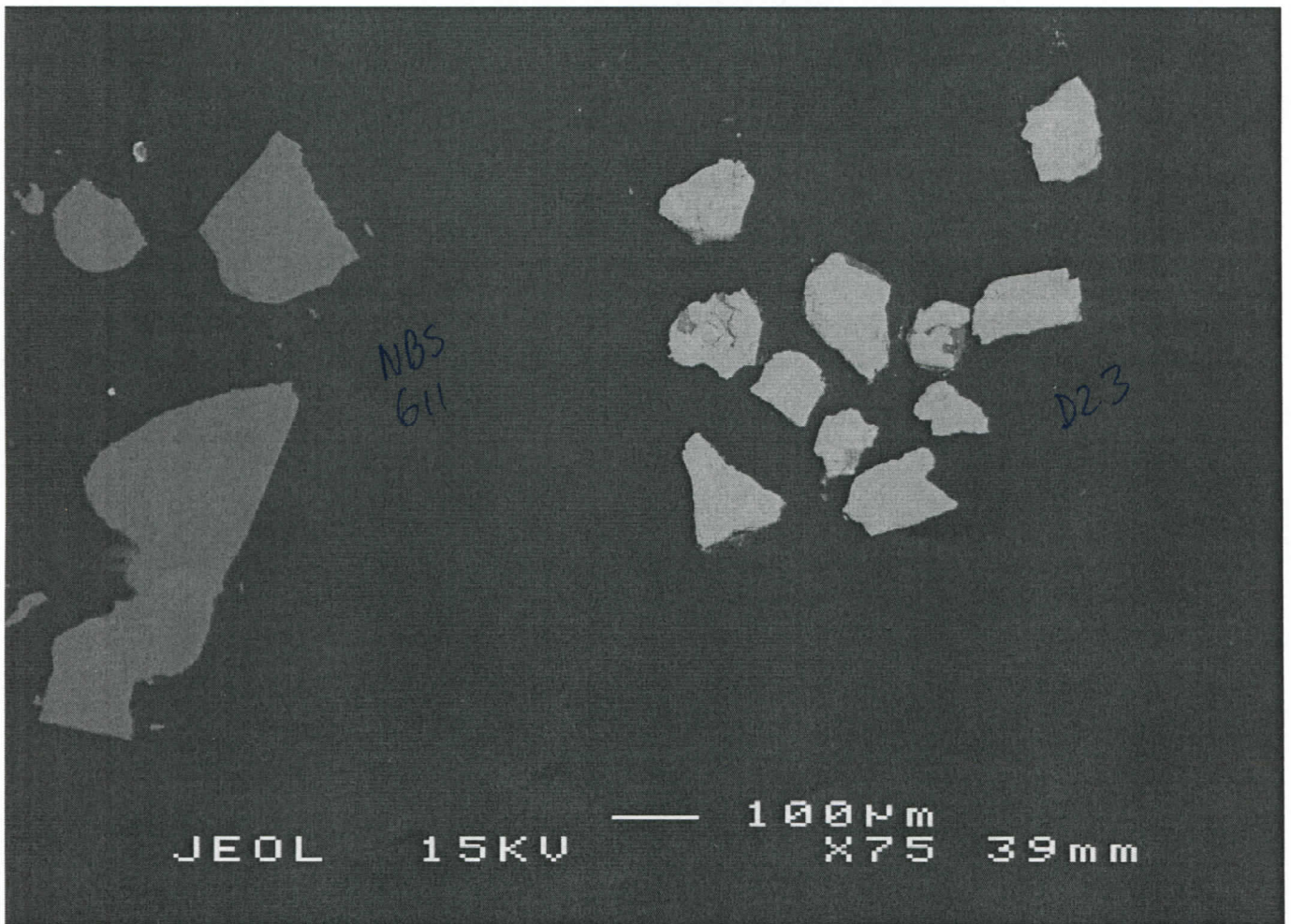
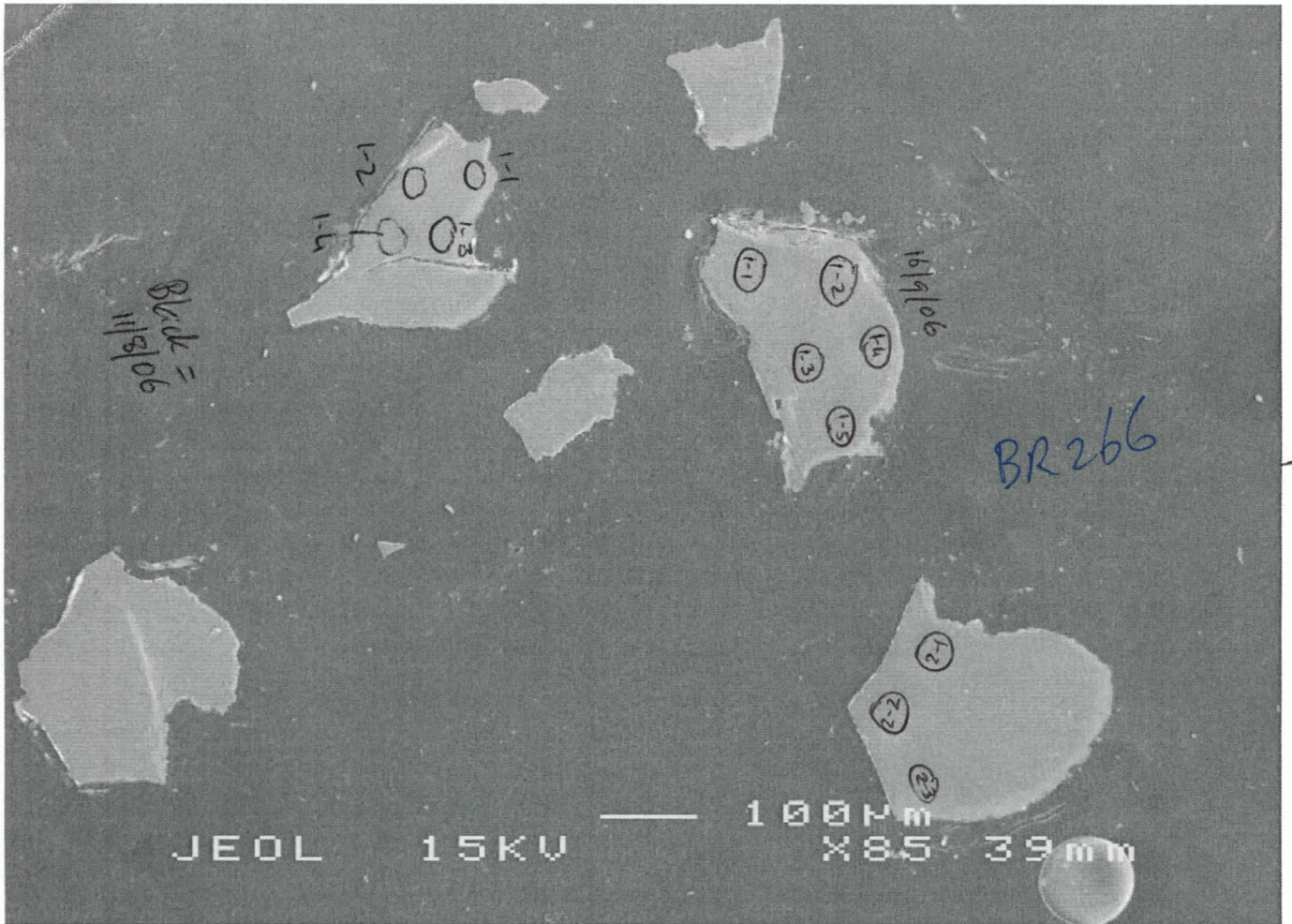
NOT REVERSED

11/8/06

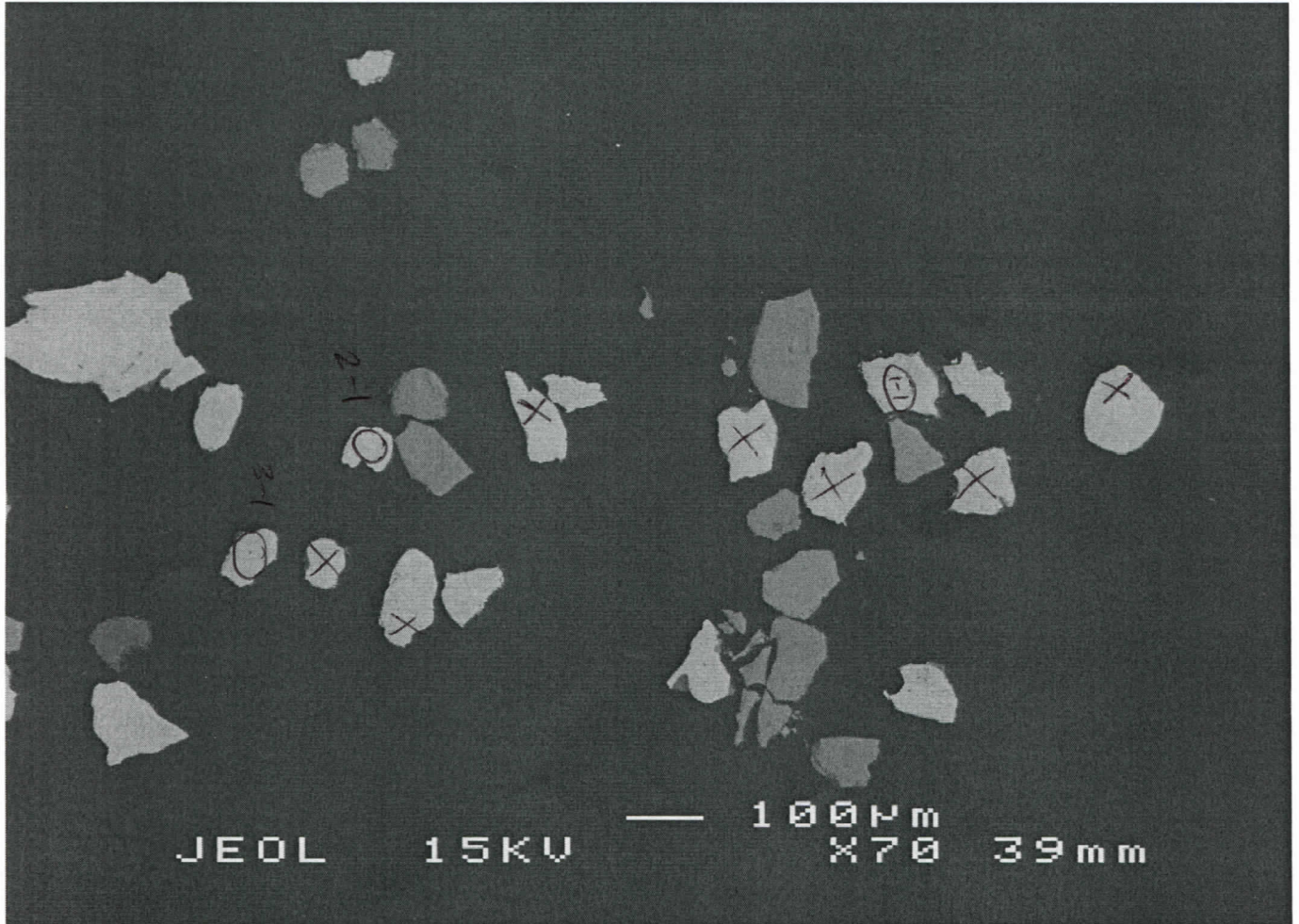
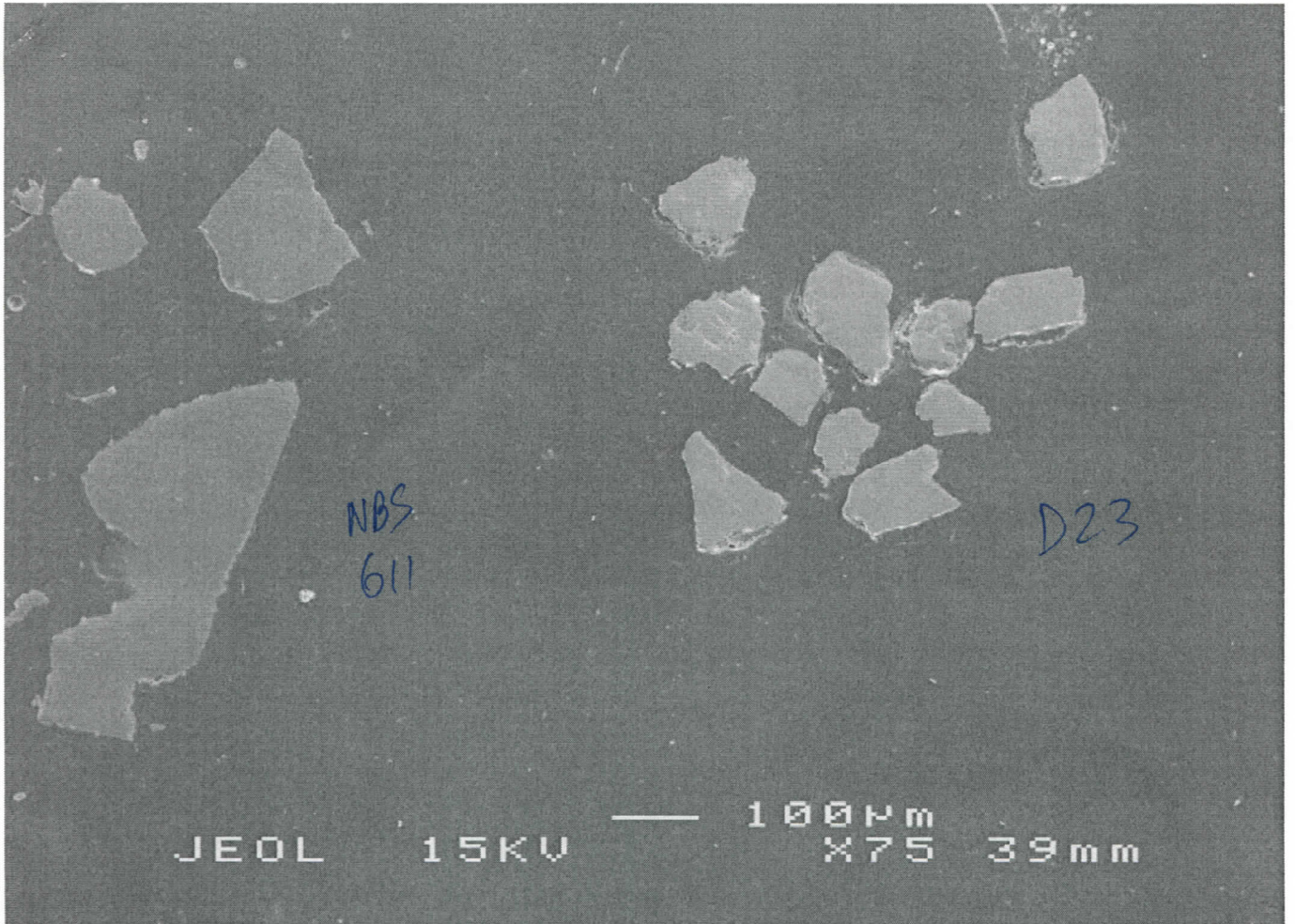
↓

↑

16/9/06

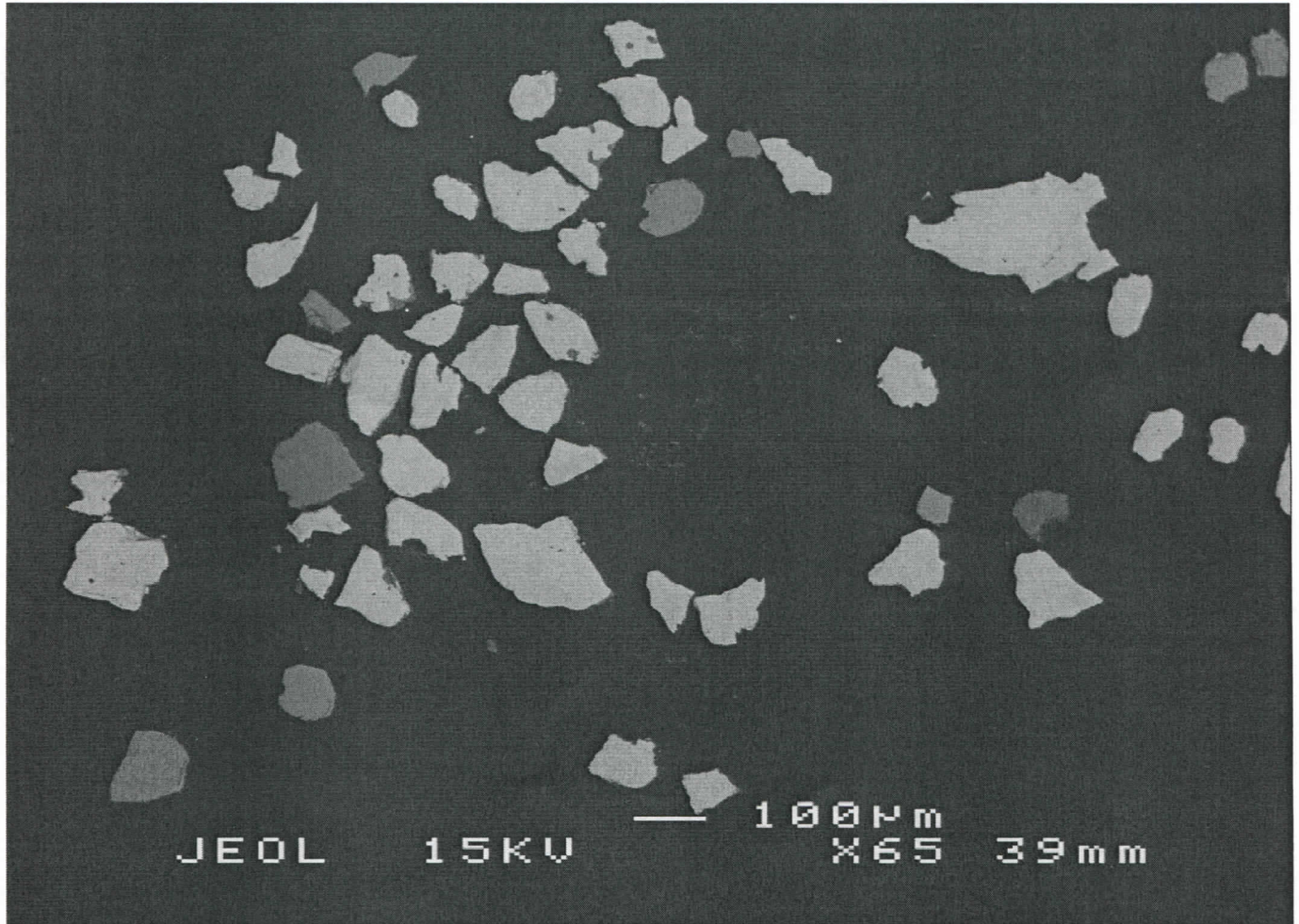
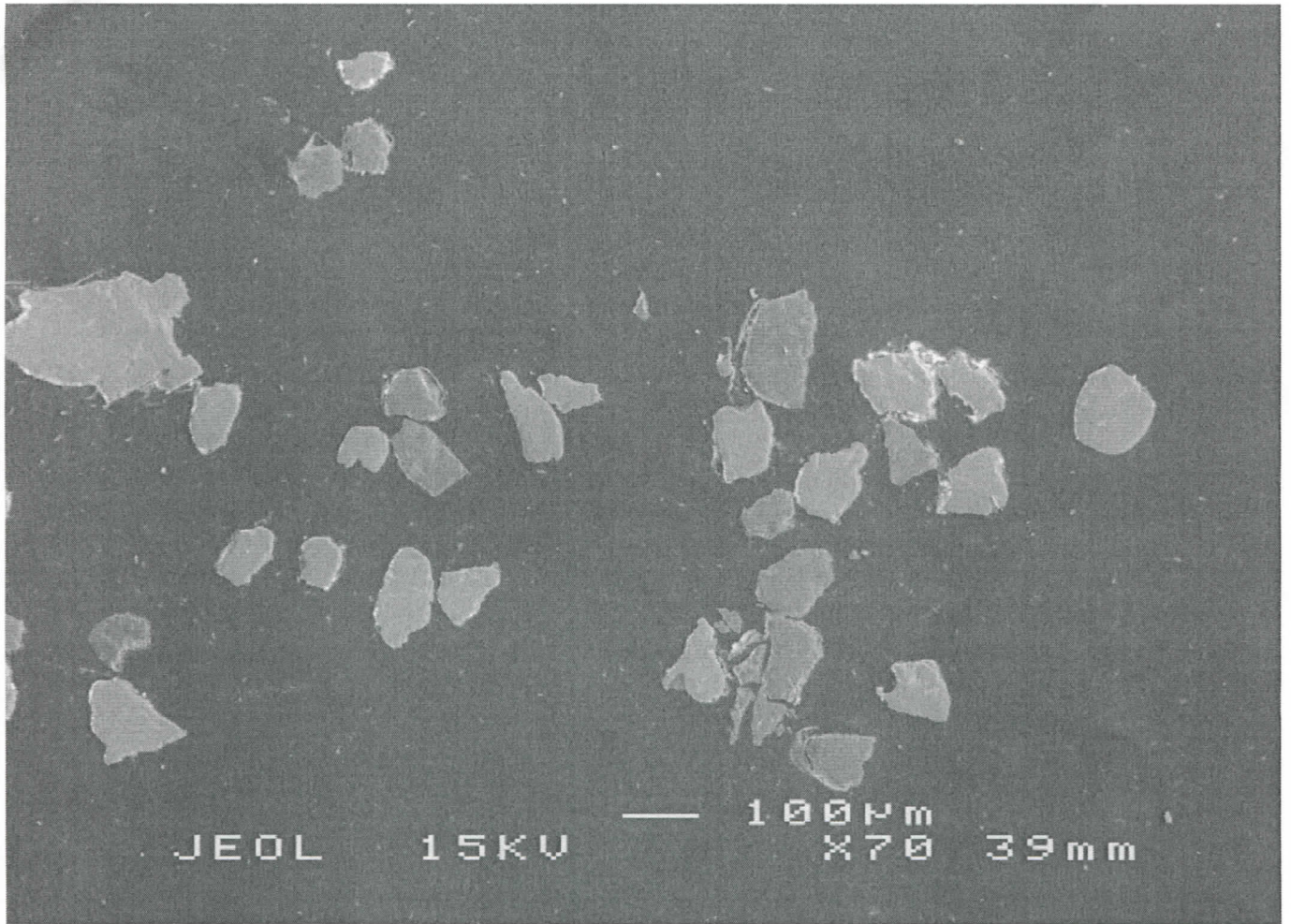


06-63



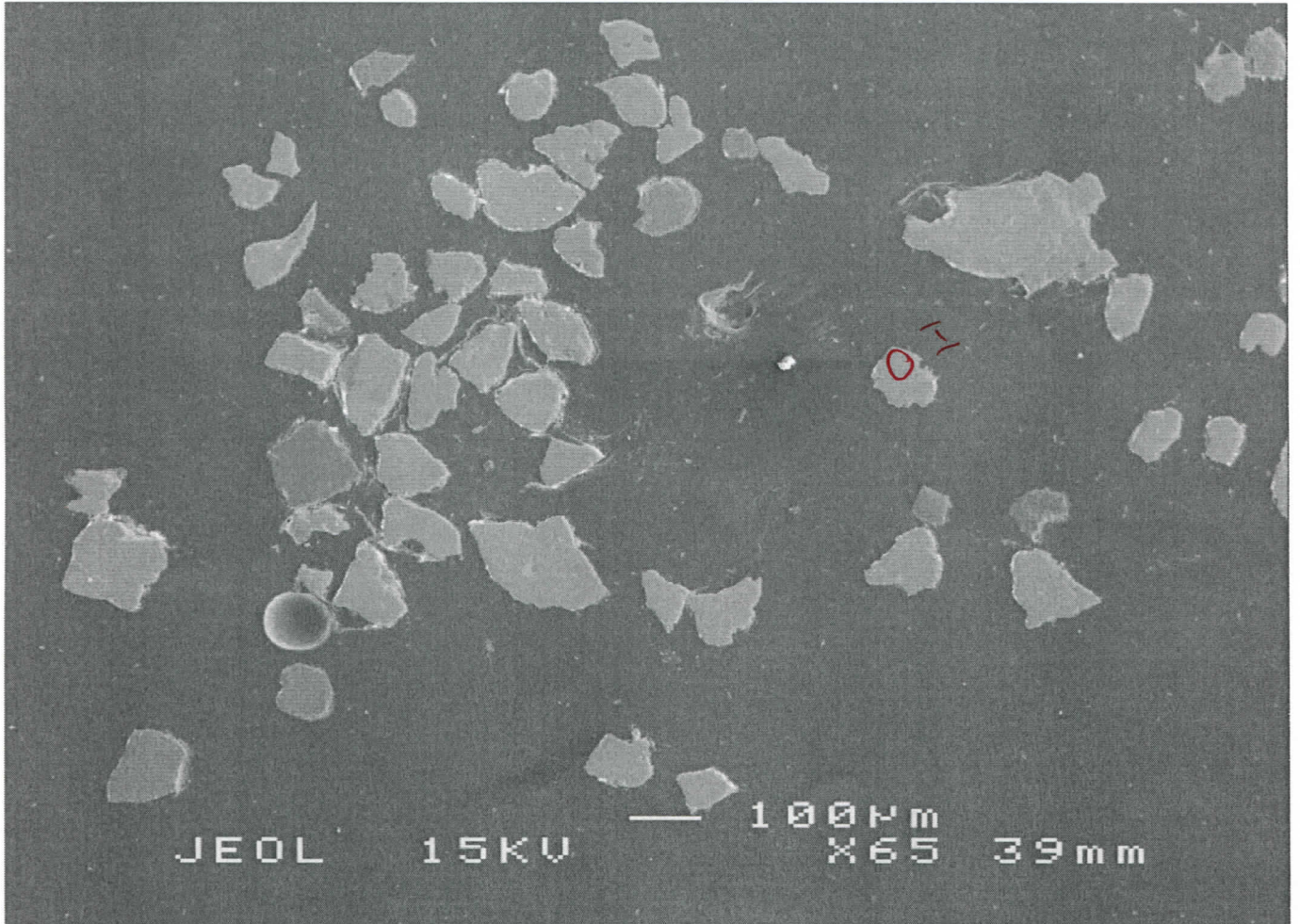
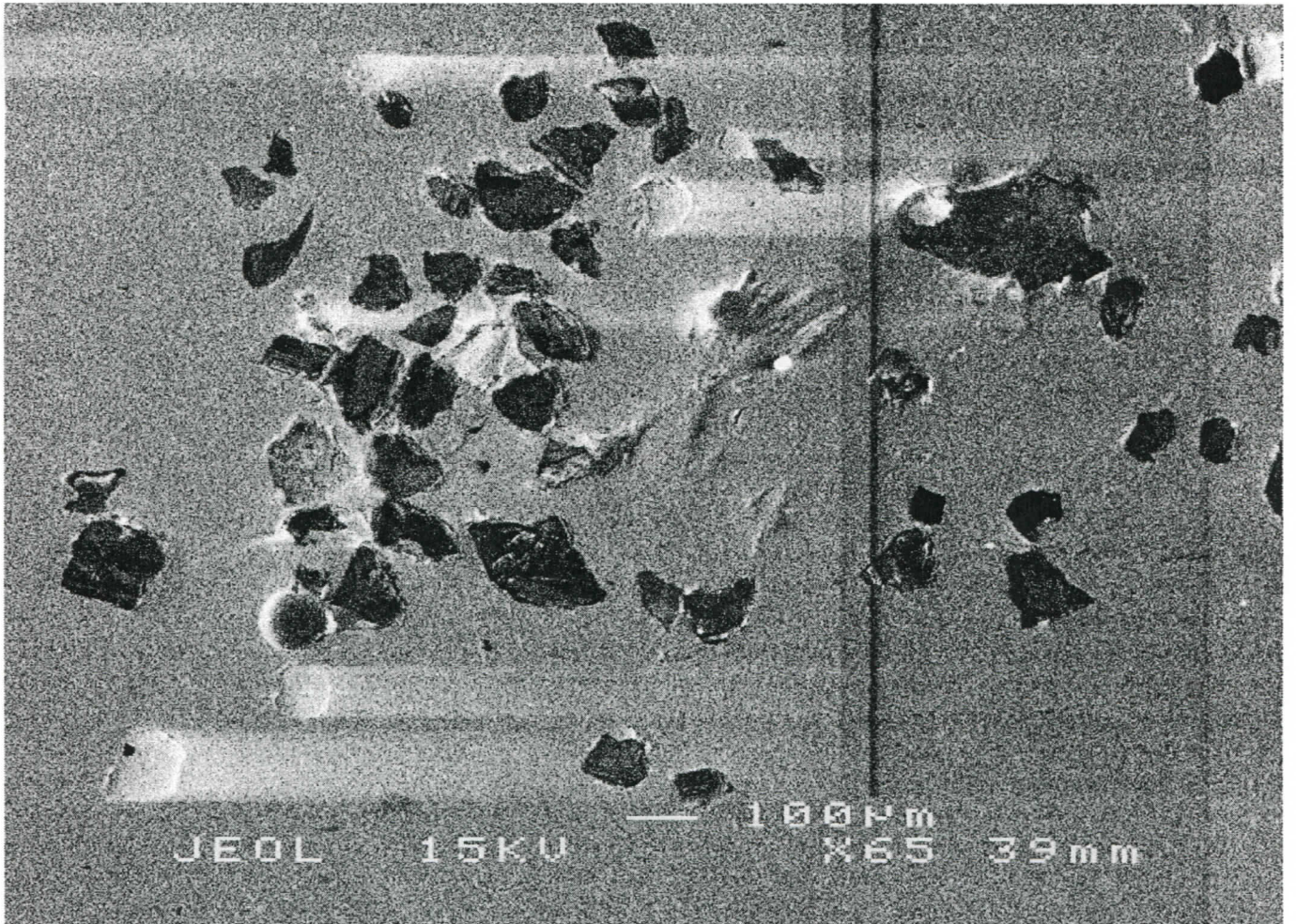
SOA

Block = 16/9/06



SDA

06-63



SDA

66-63

