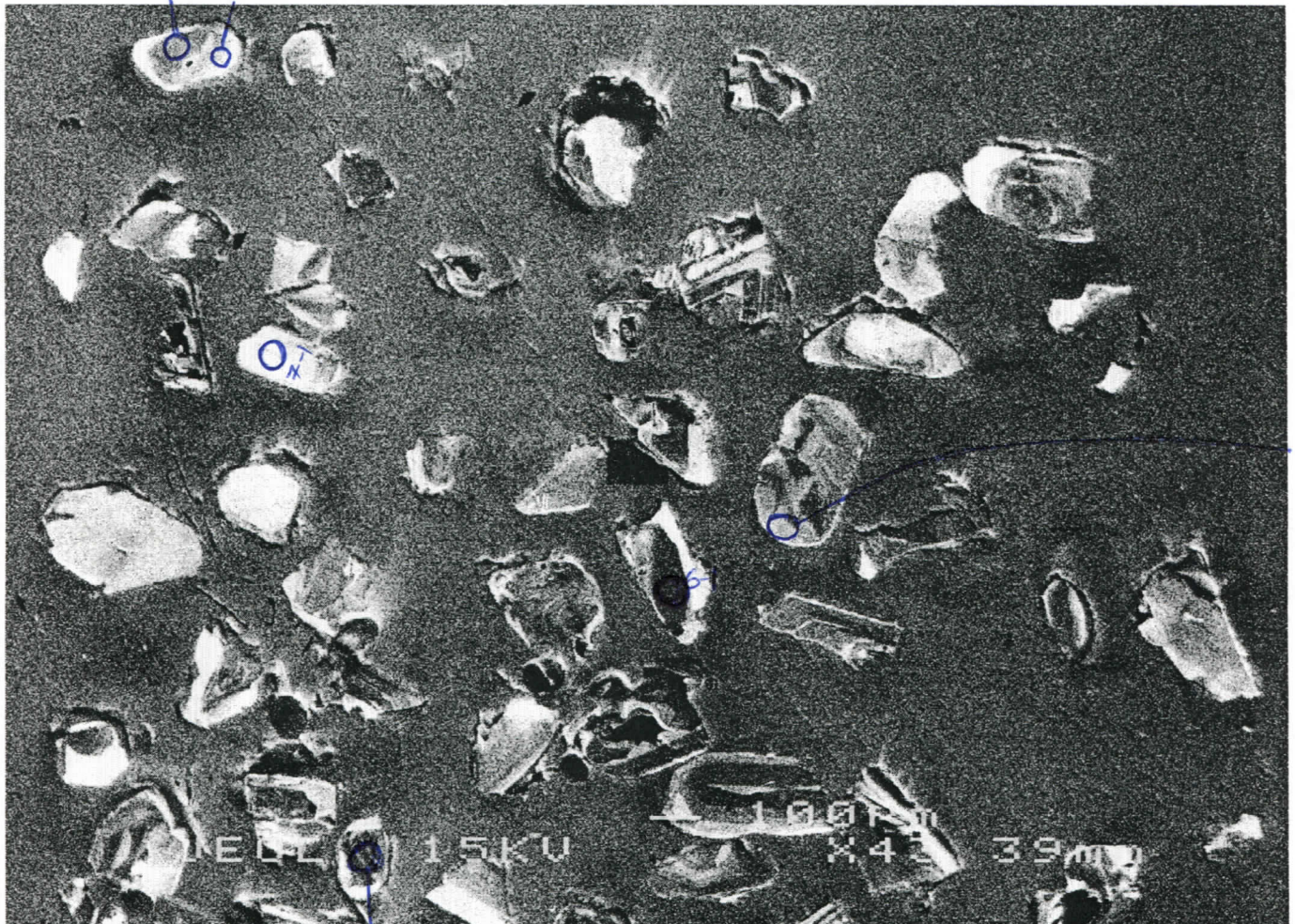
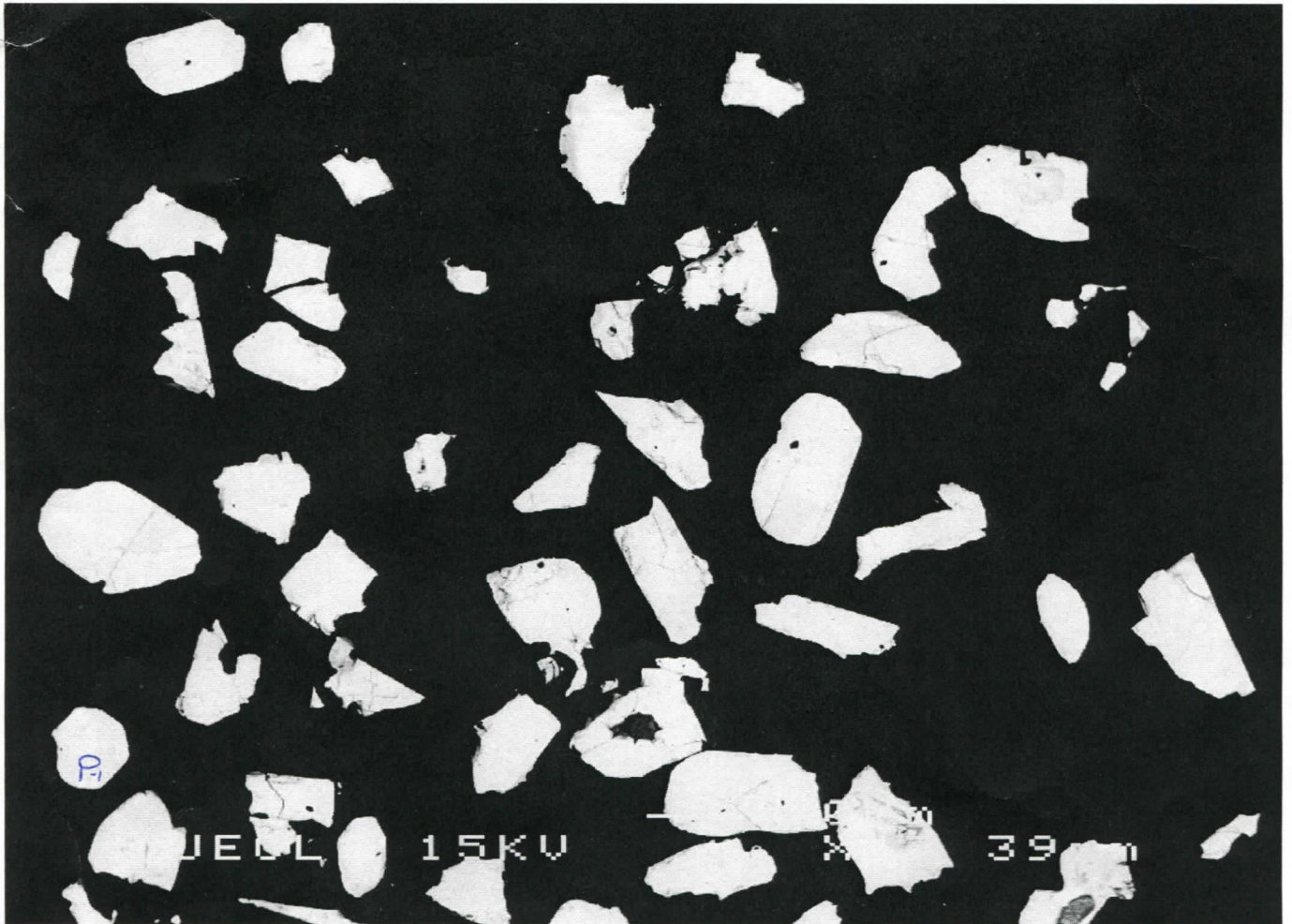
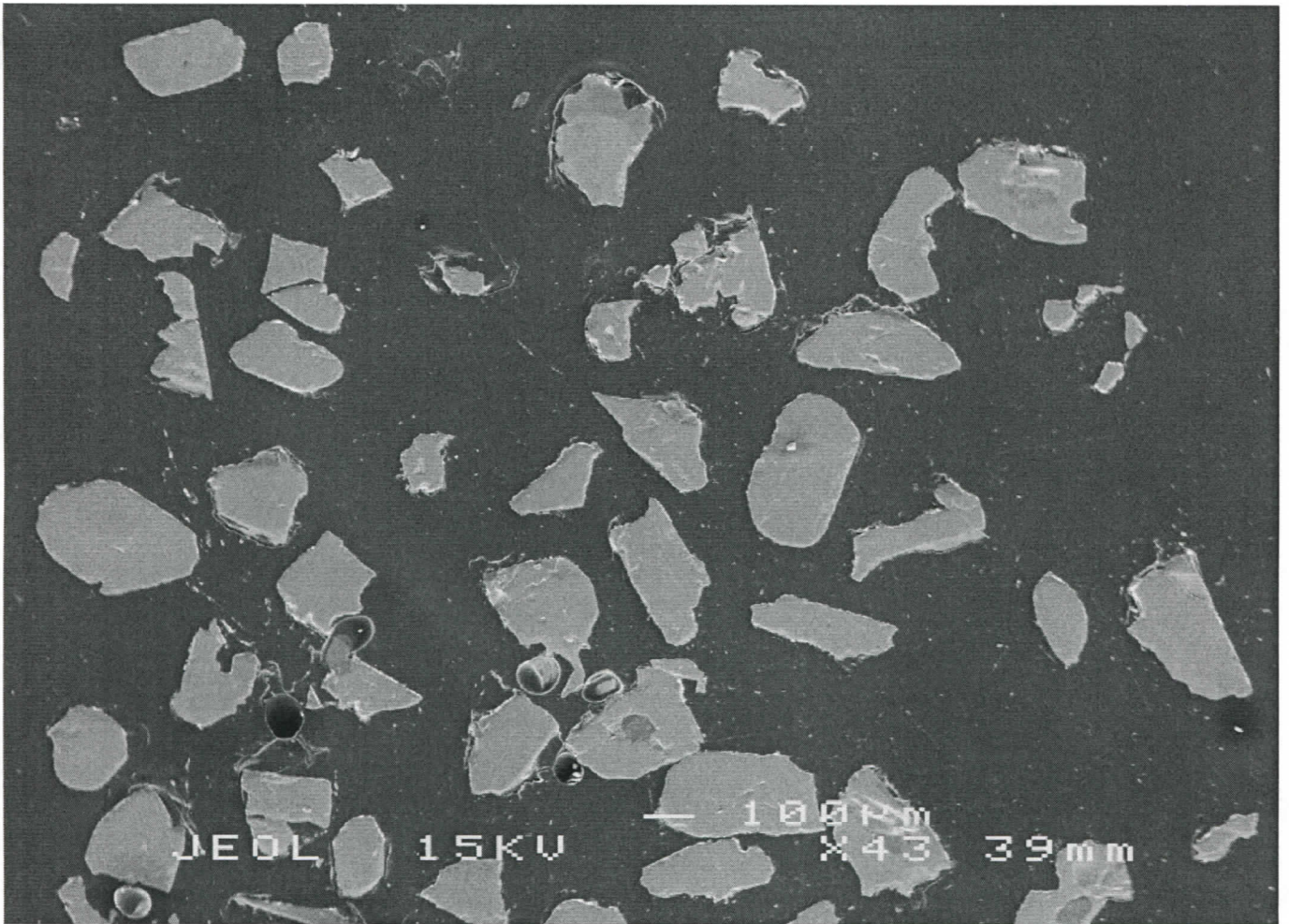


10/7/06

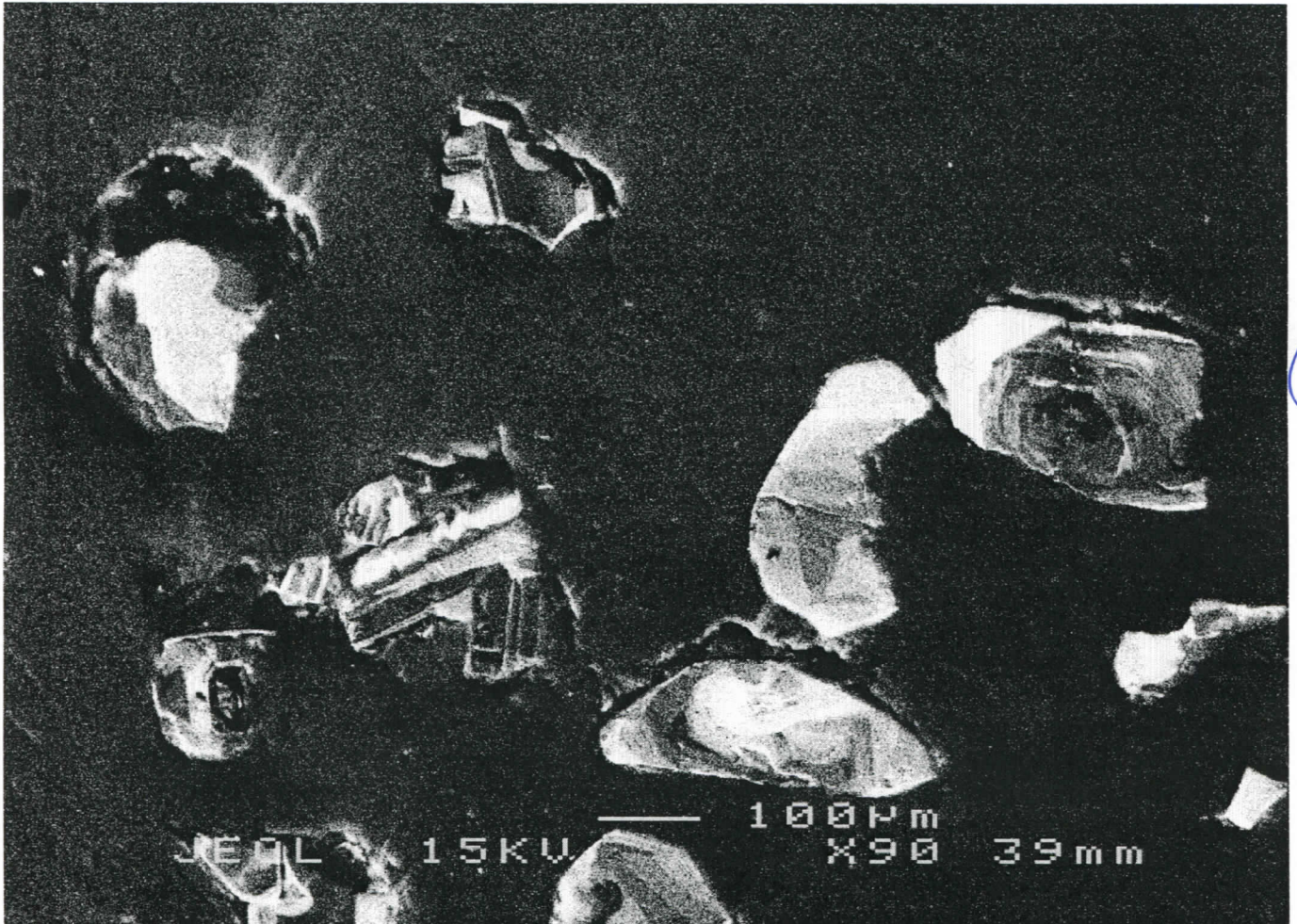
06-64A



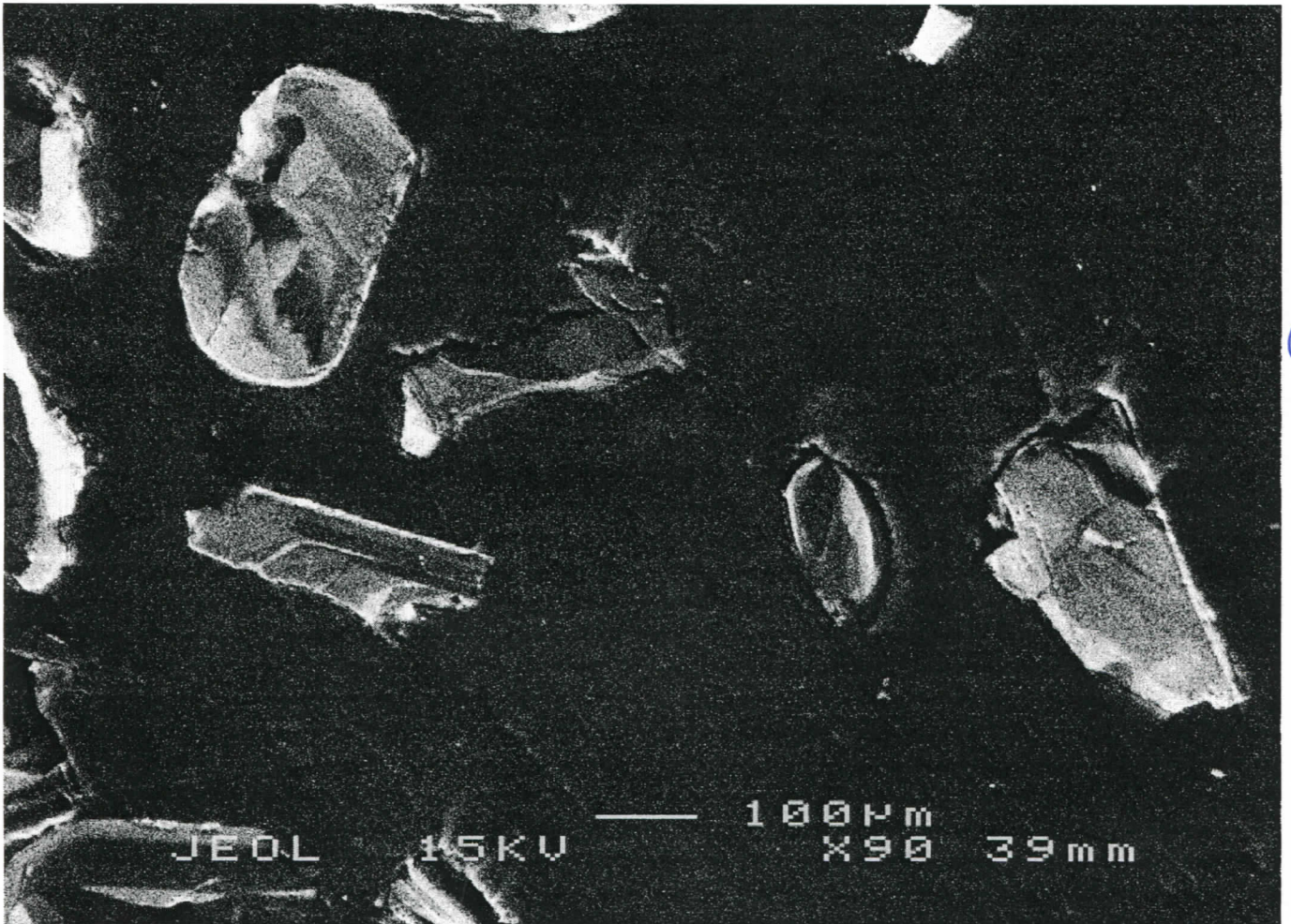
06-64A



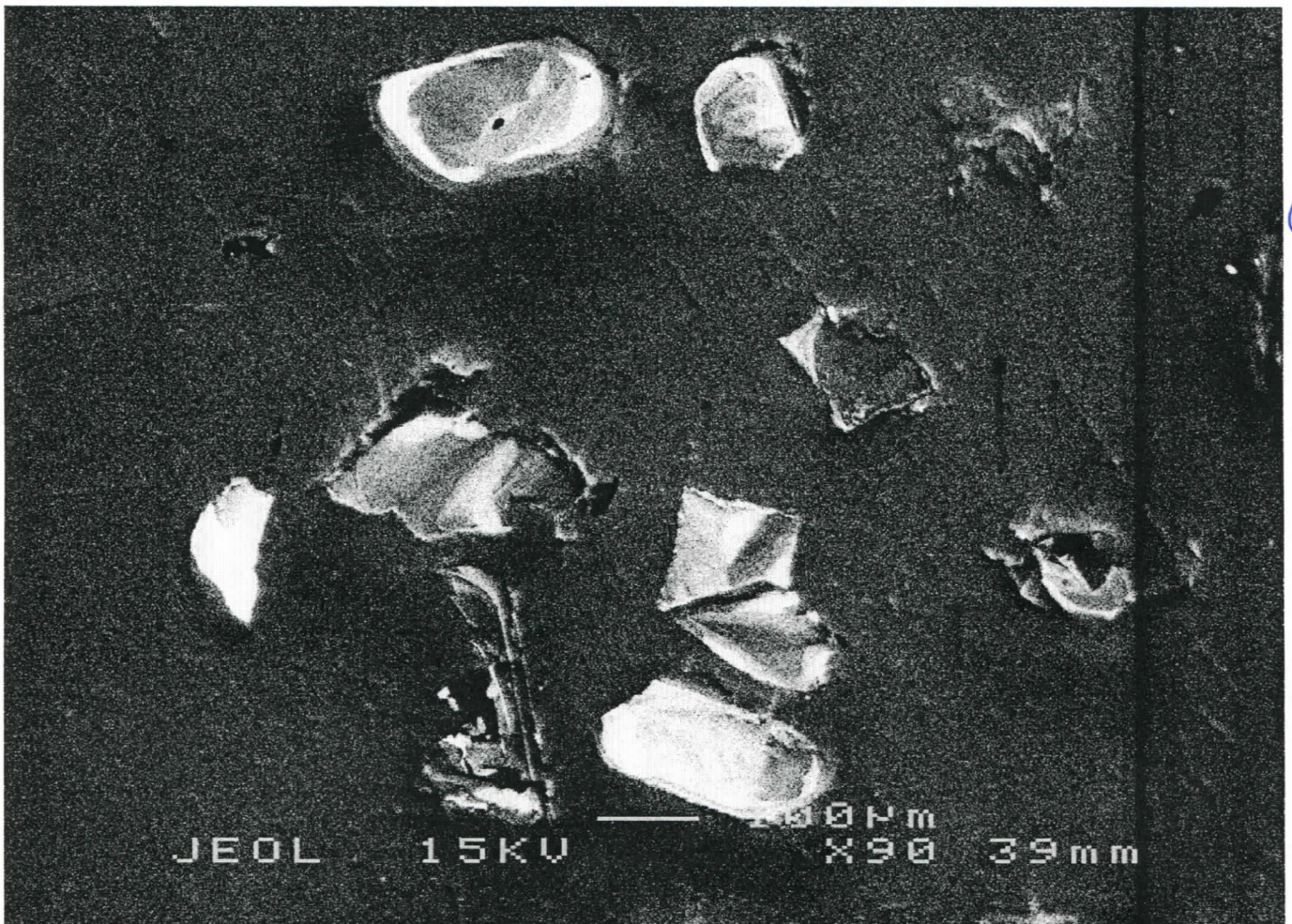
1C



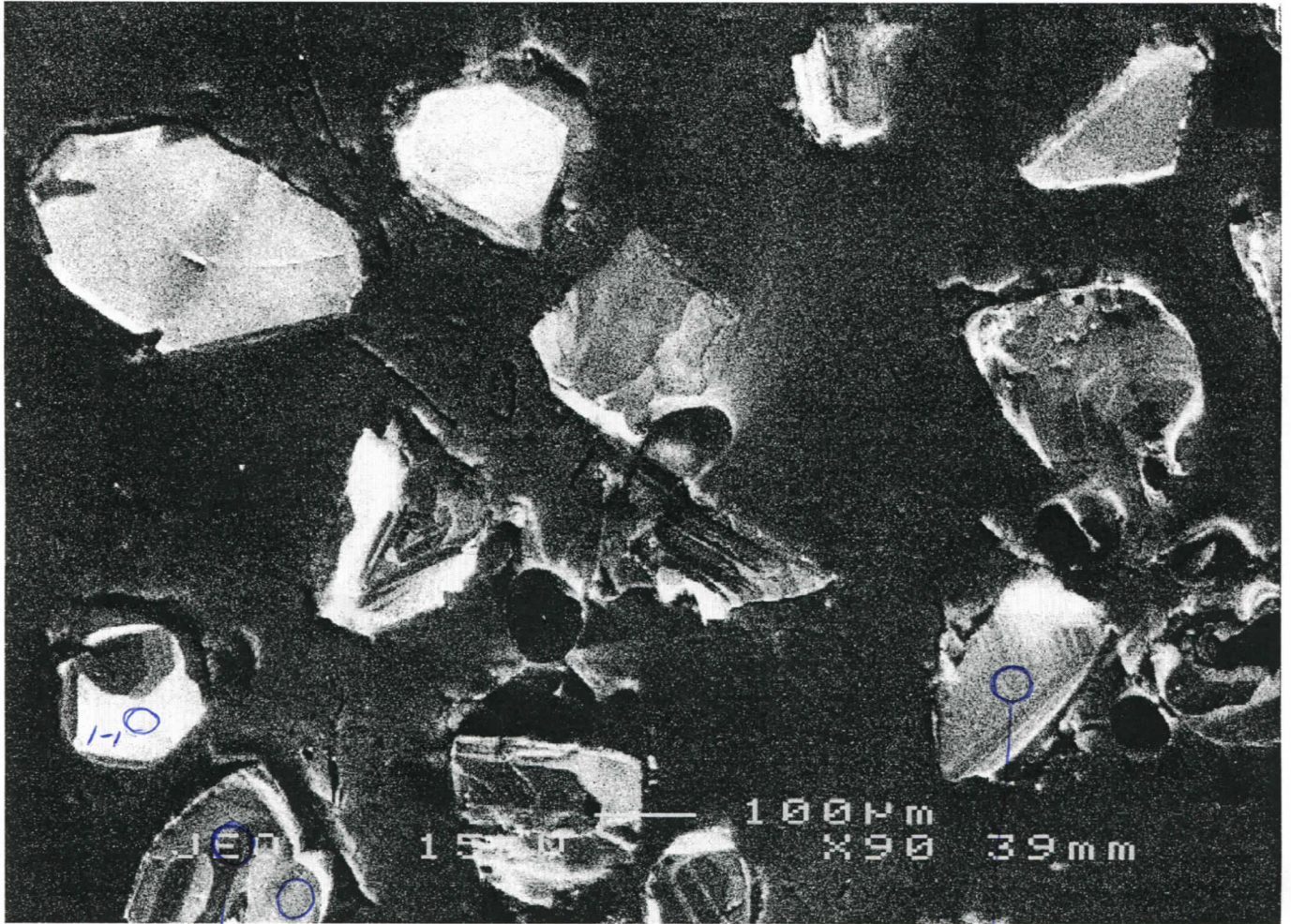
~~2A~~
(see 1B)



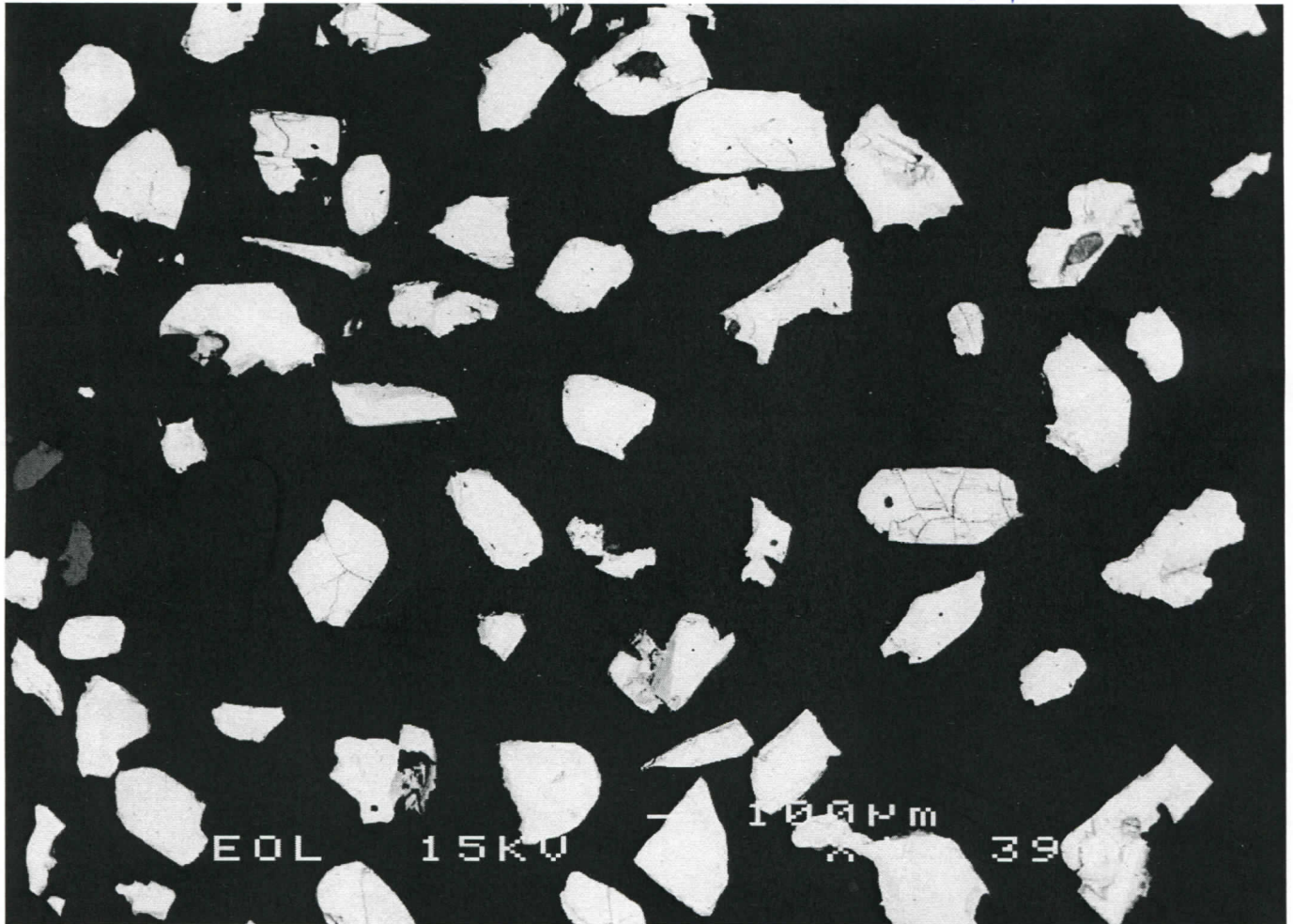
3
(see
1B)



4
(see
1B)



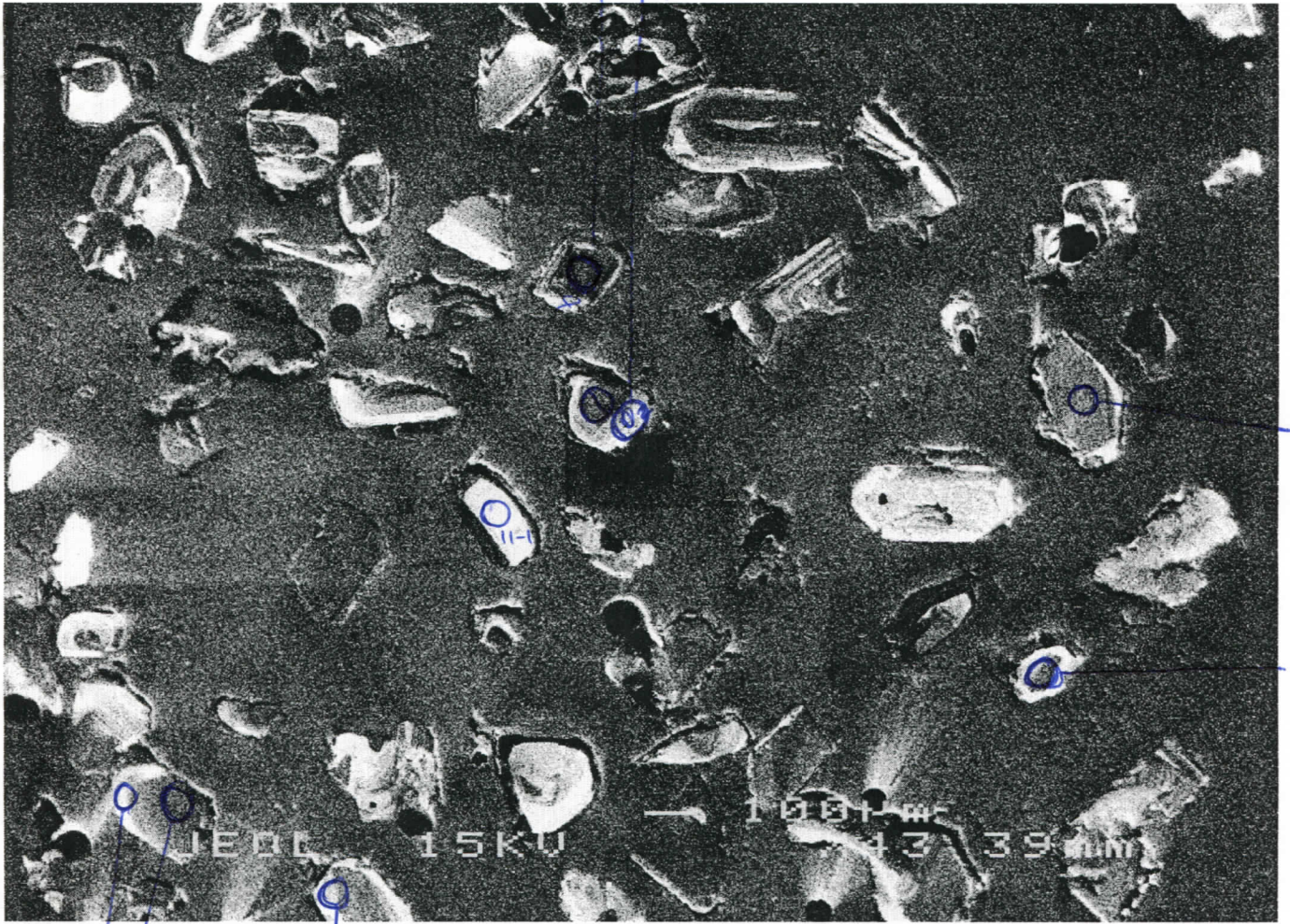
5
(see
1B)



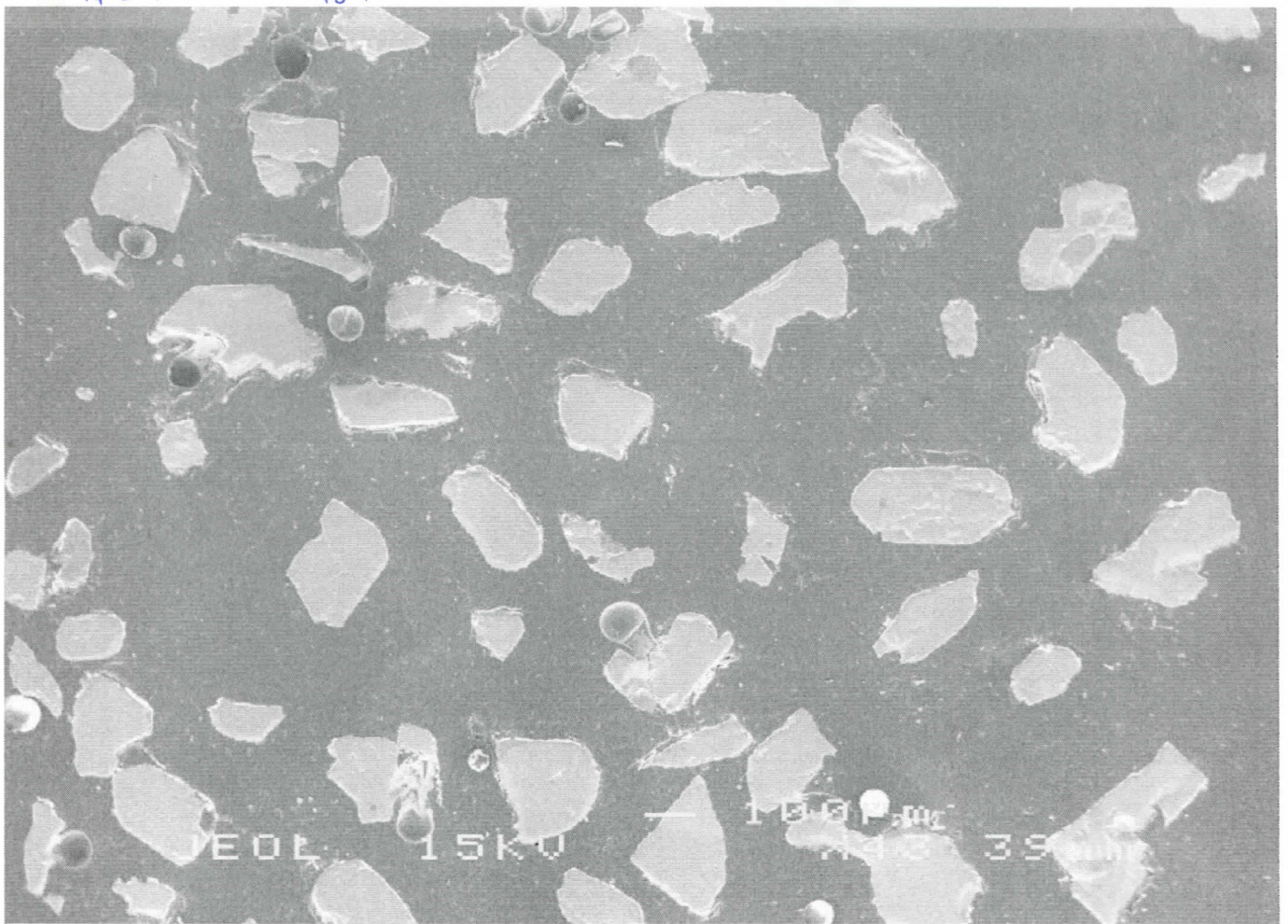
6A

06-64A

9-1 10-12

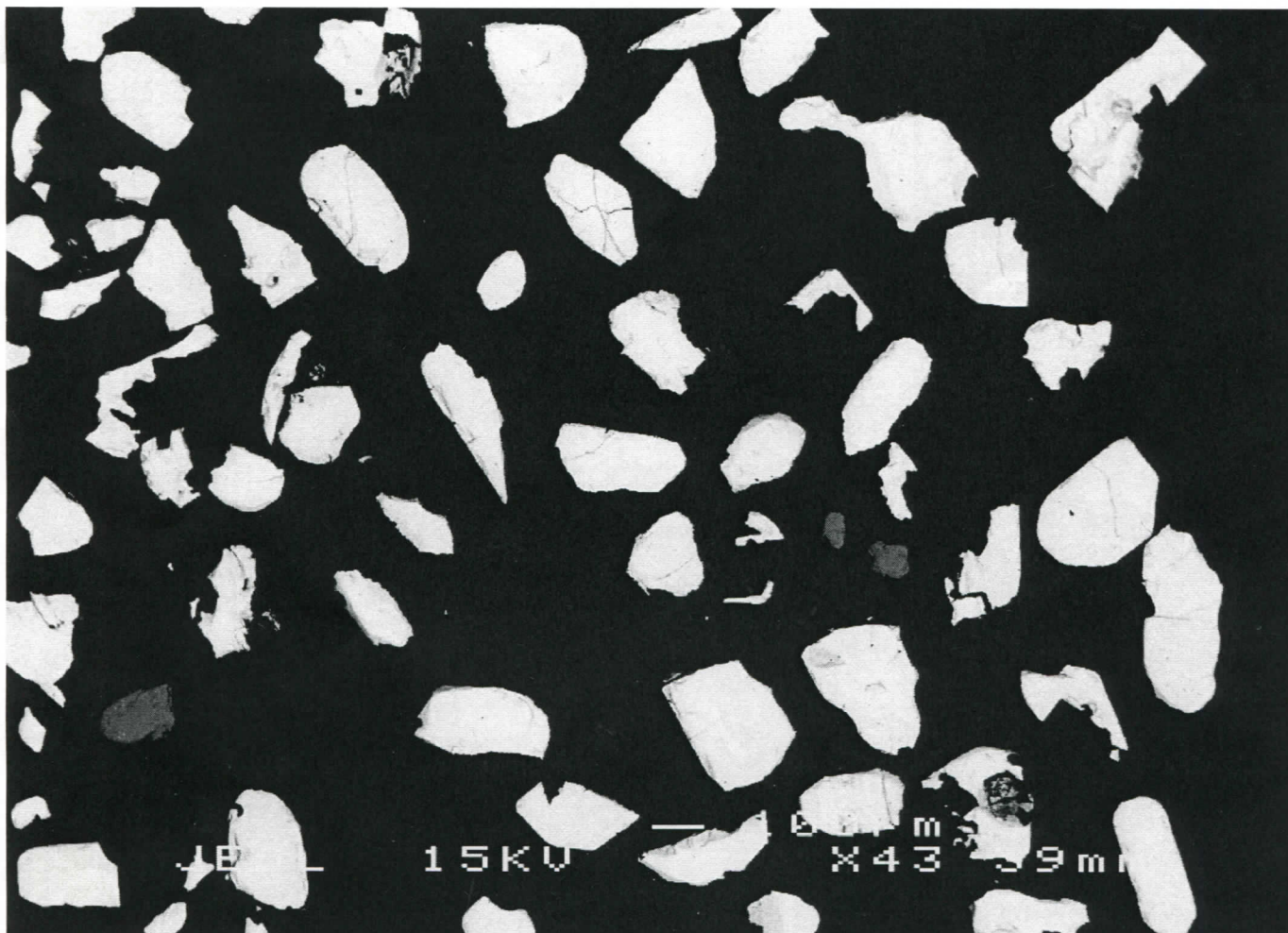


6B

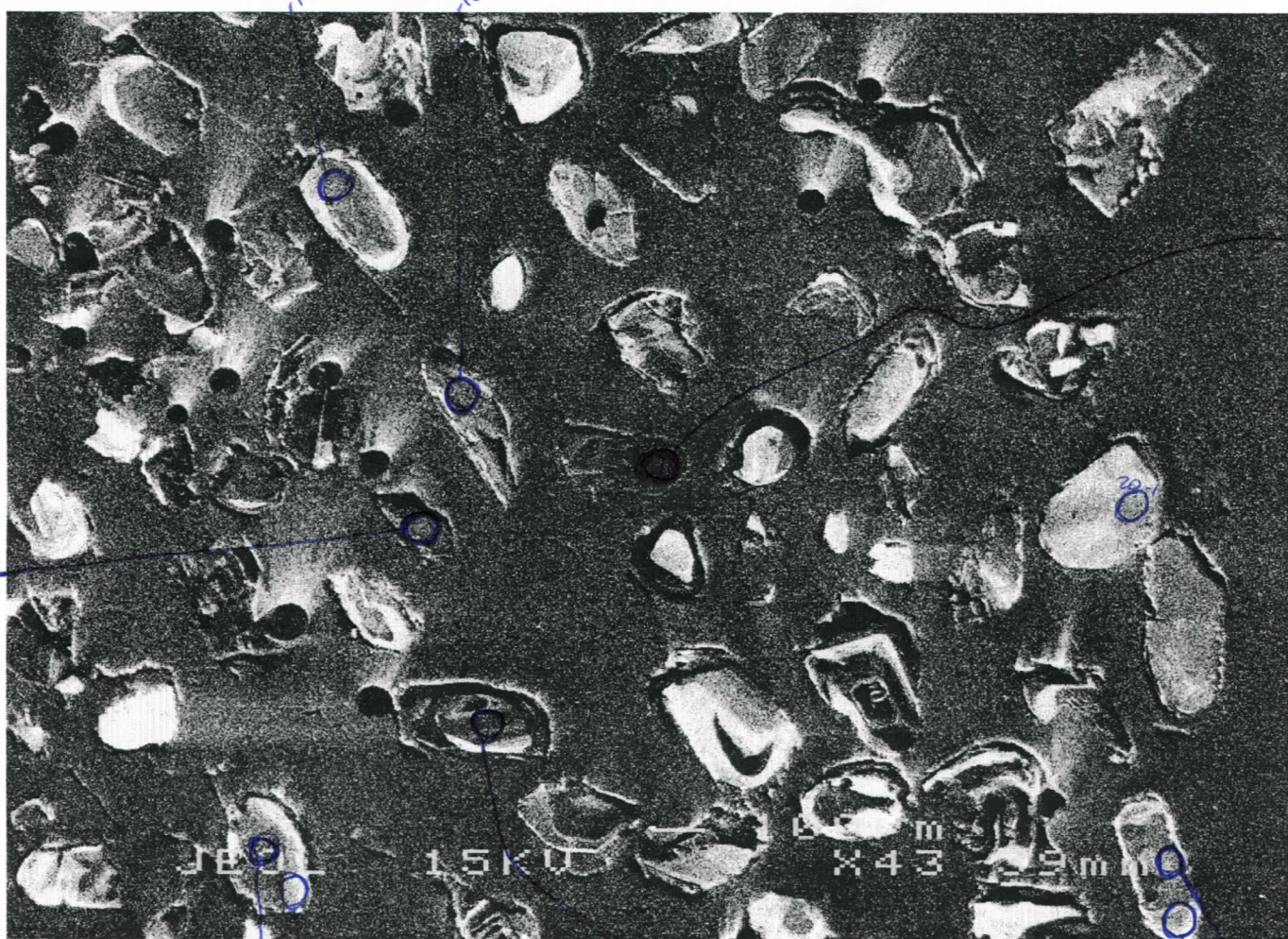


6c

06-64A



7A



22-1
7B

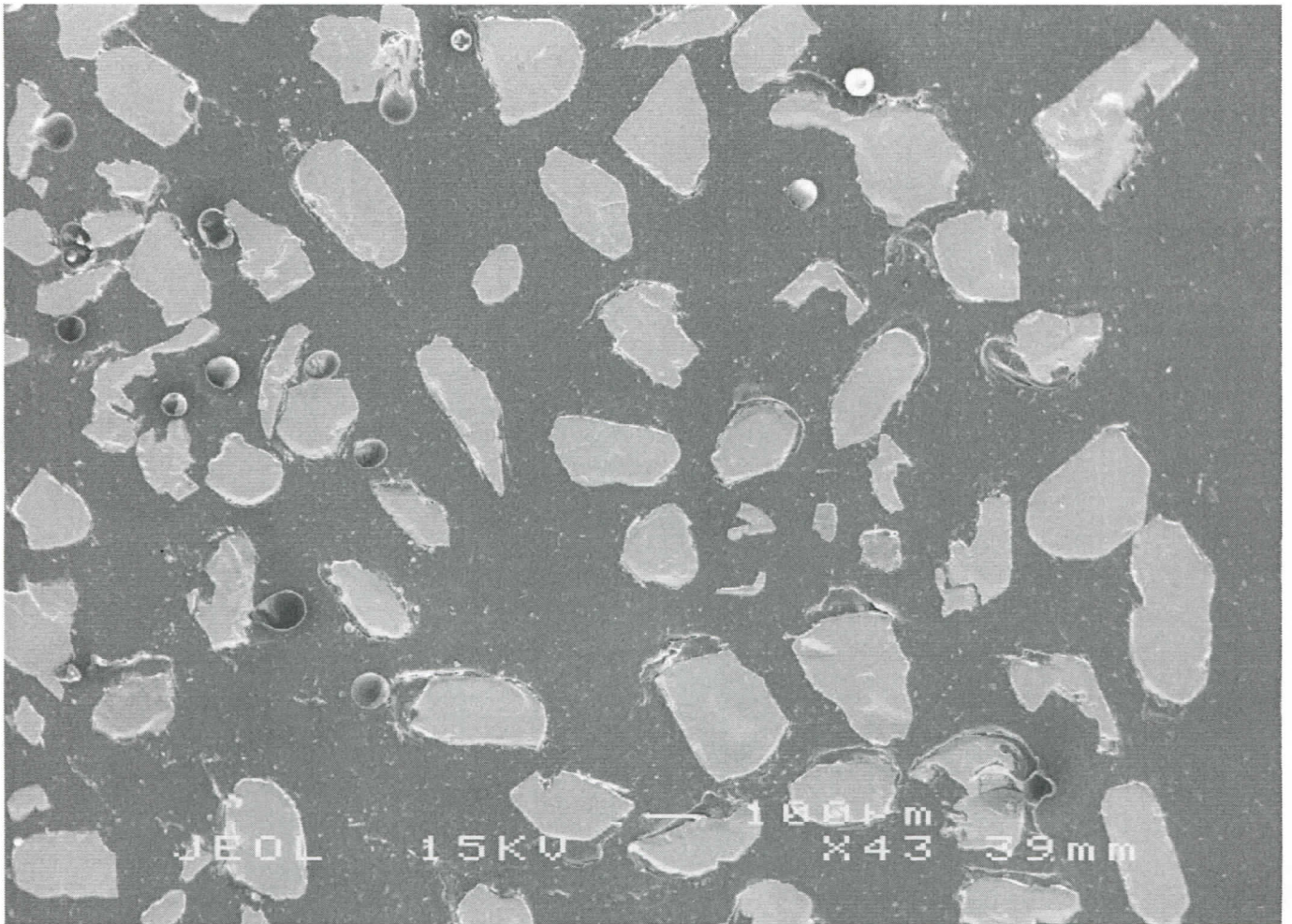
21-1

18-1
18-2

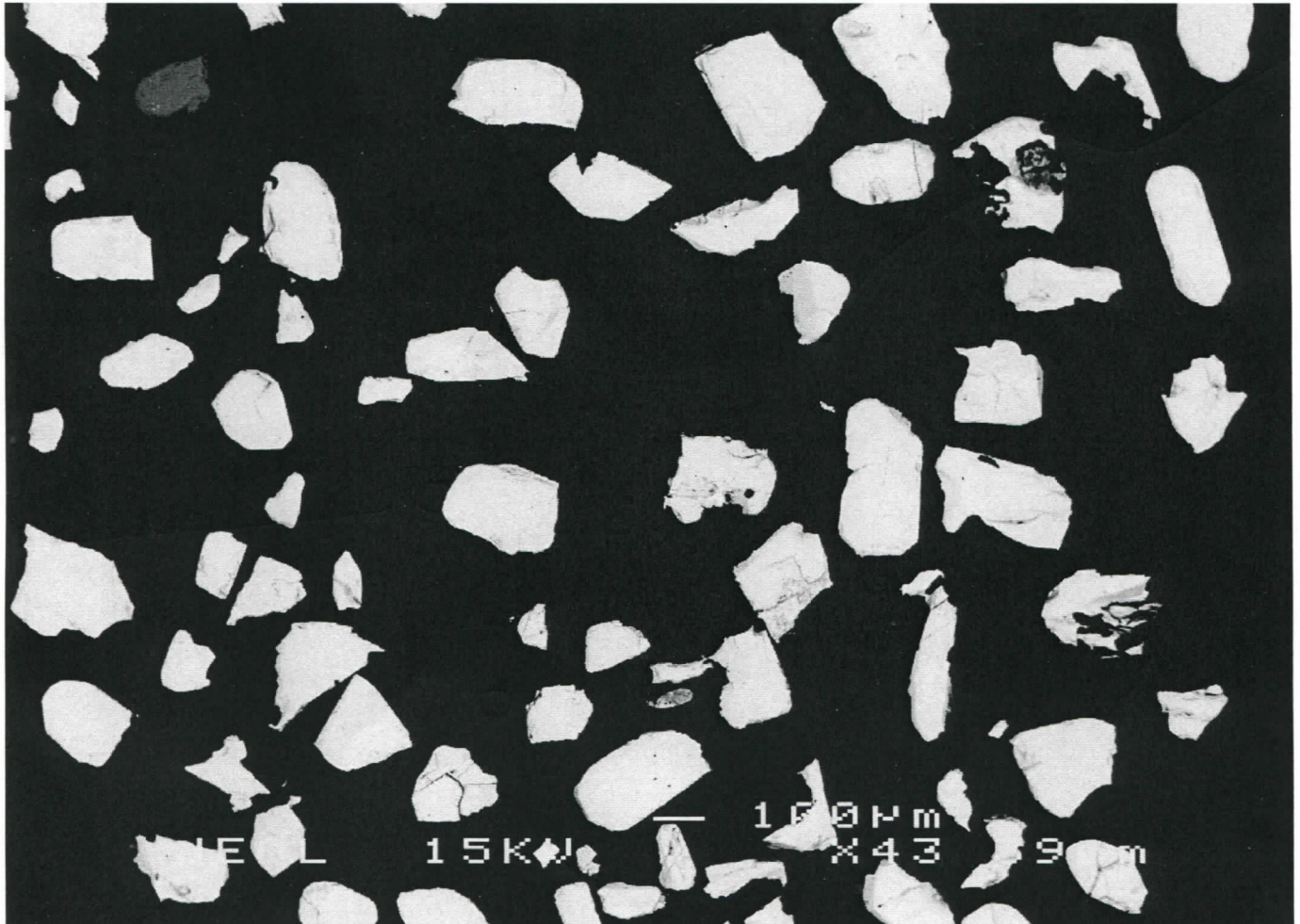
17-1

19-1 19-2

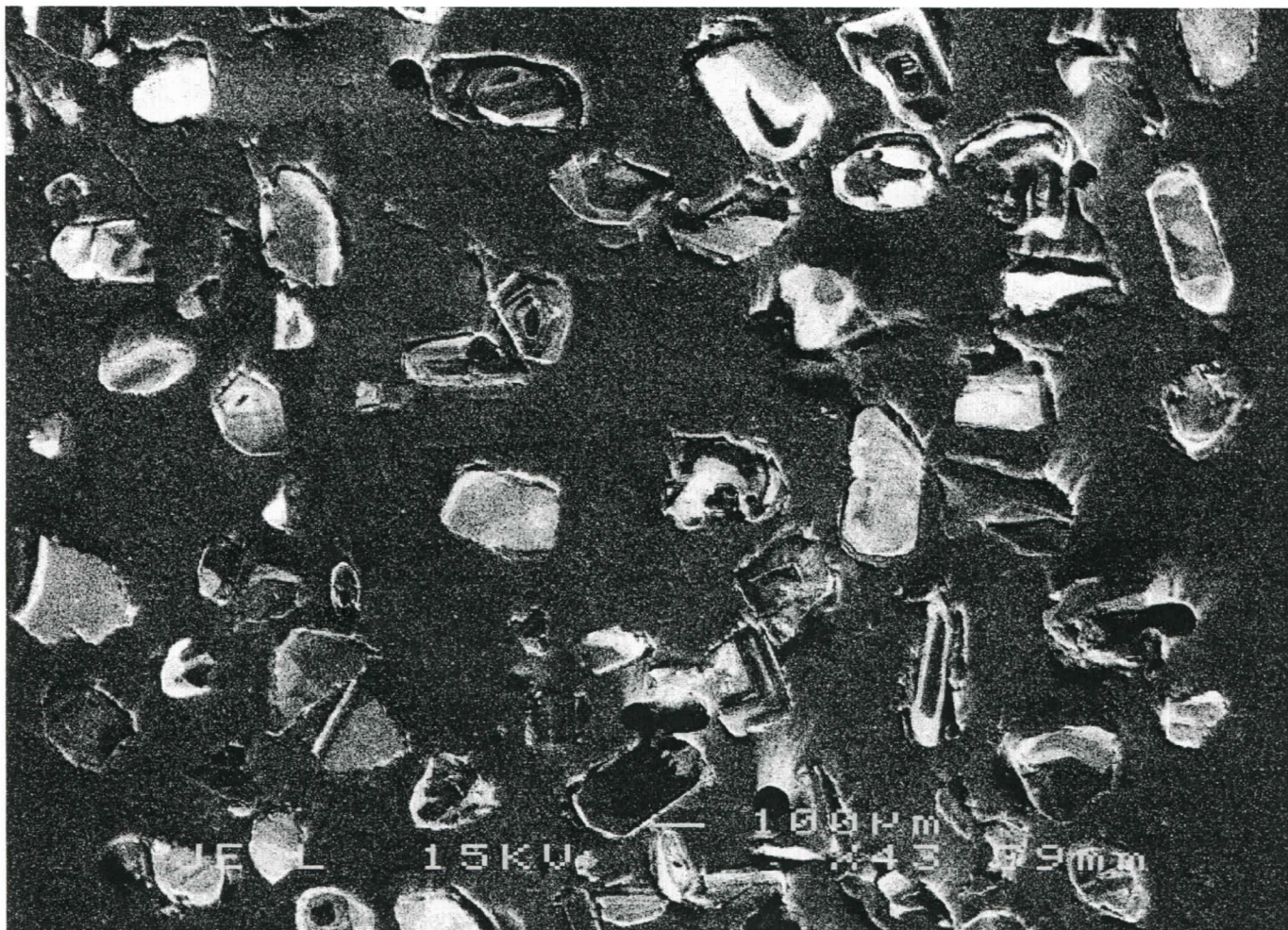
06-64A



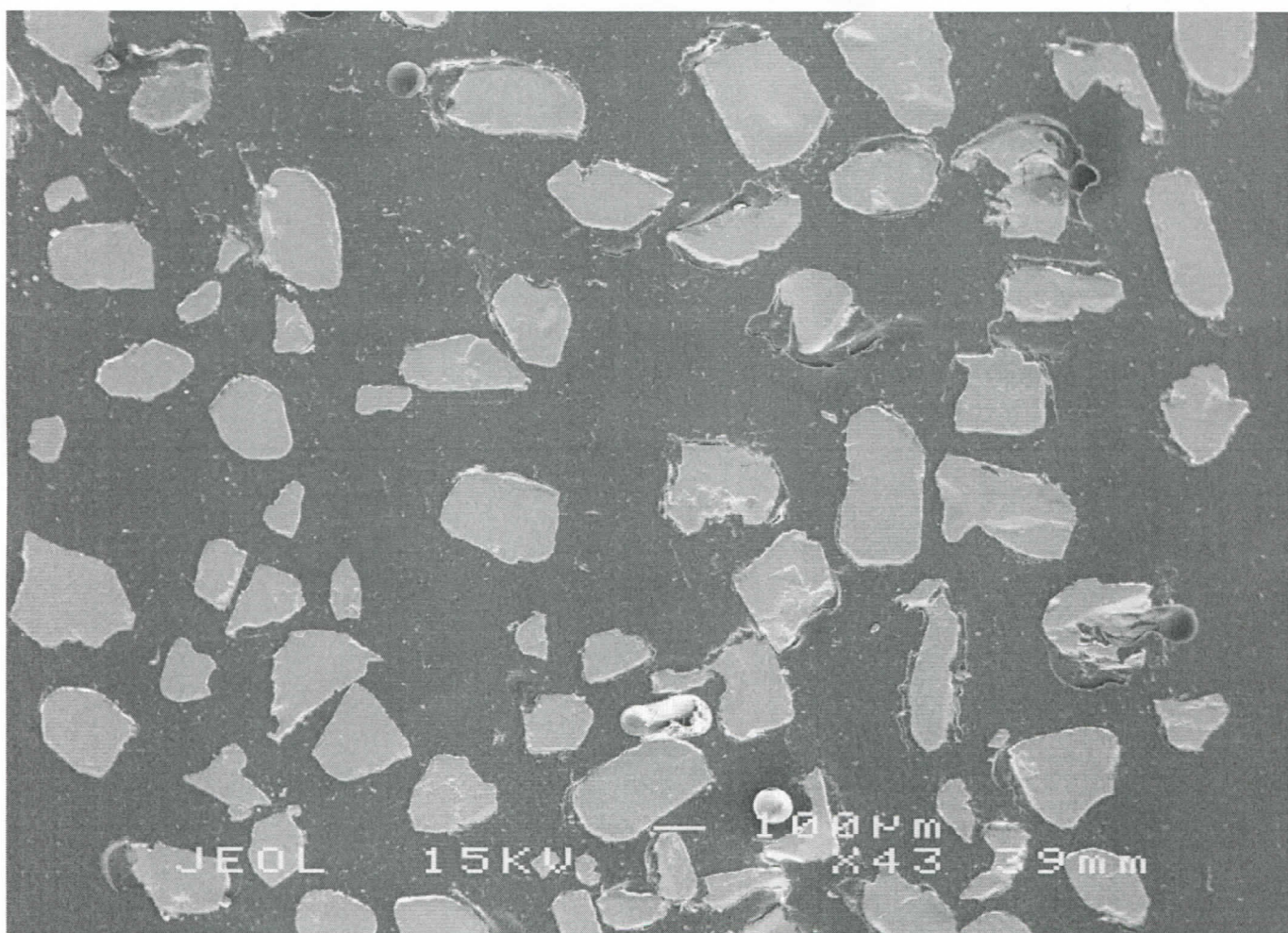
7C



8A

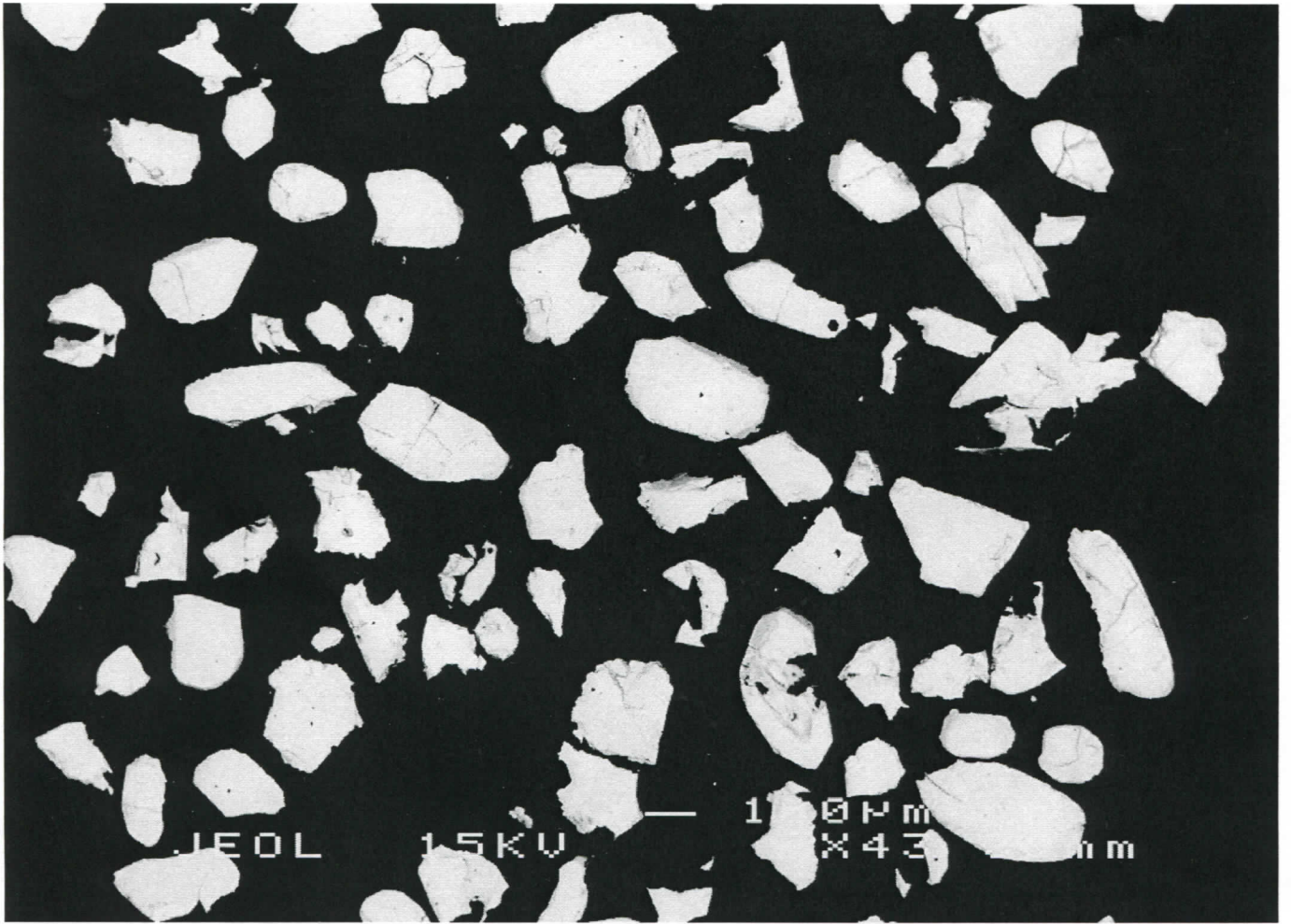


8B

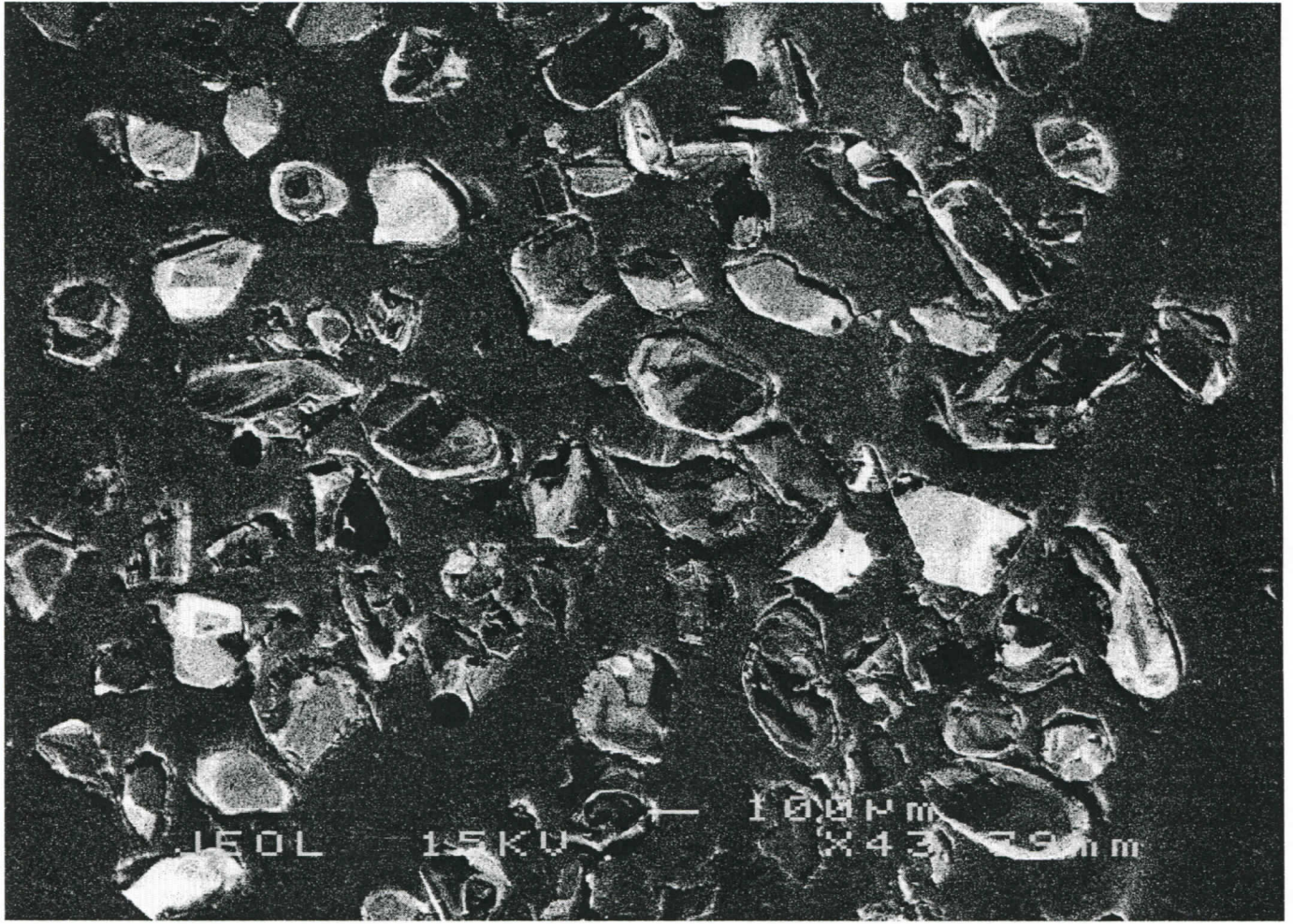


8C

06-64A

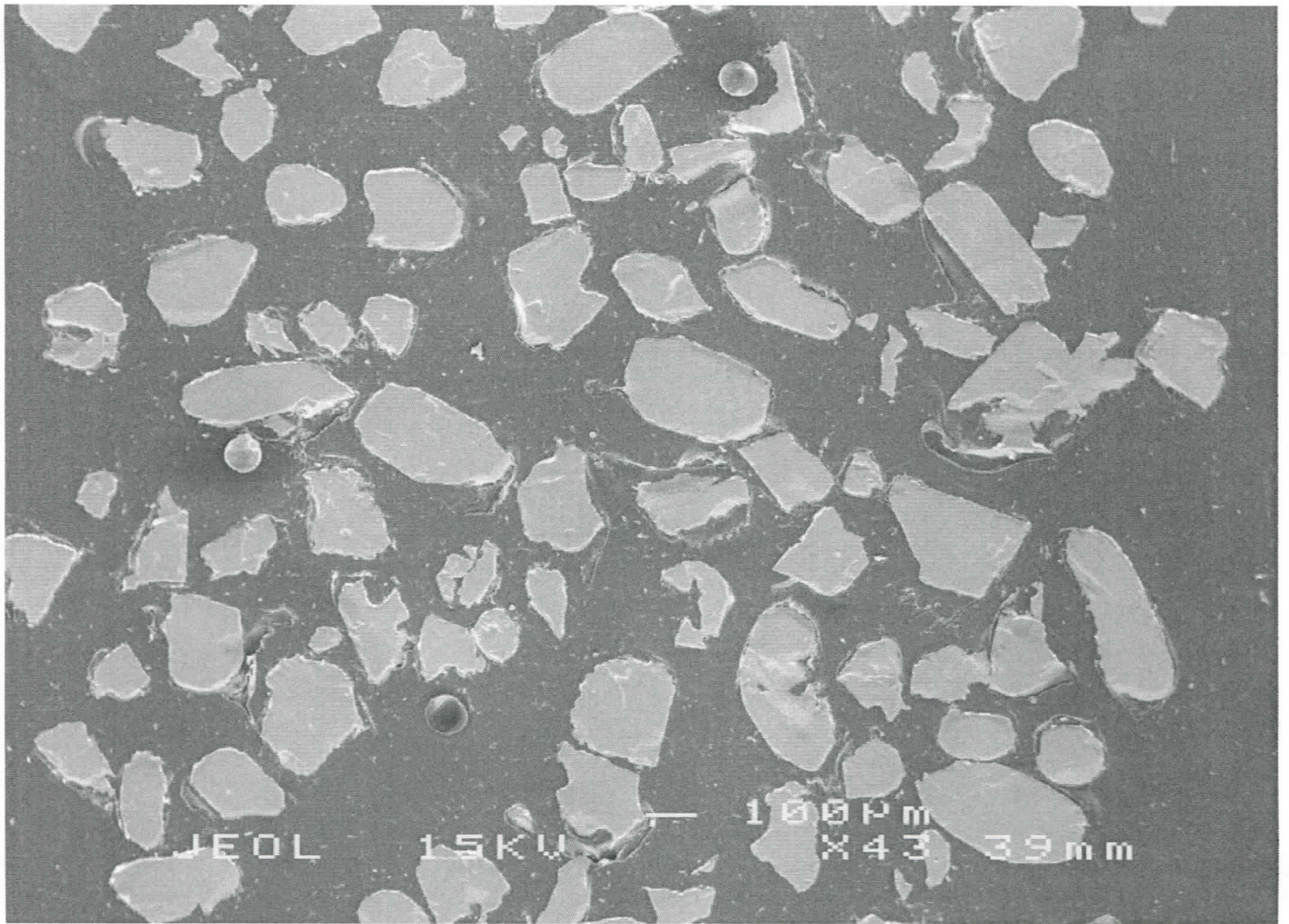


9A

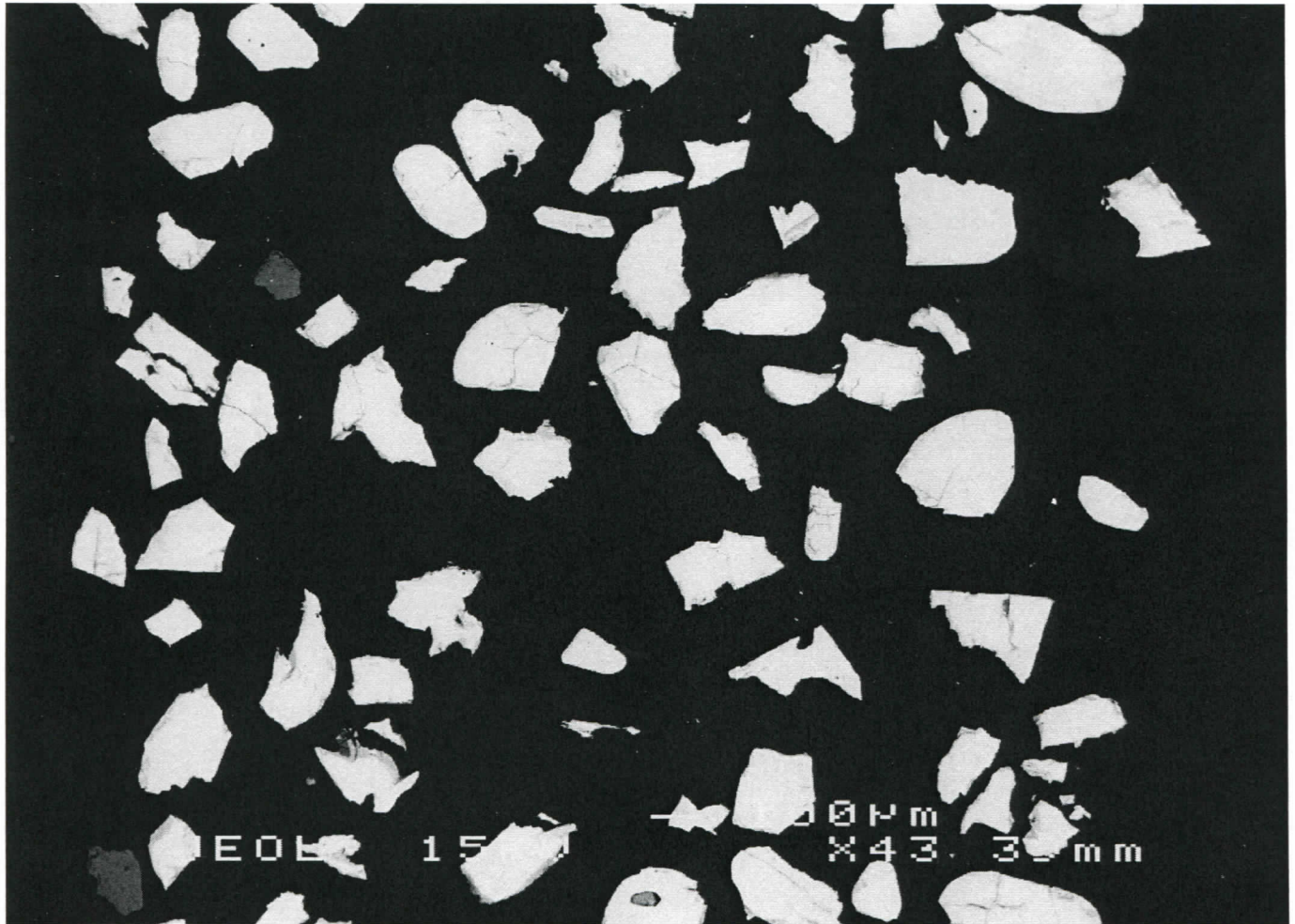


9B

06-64A

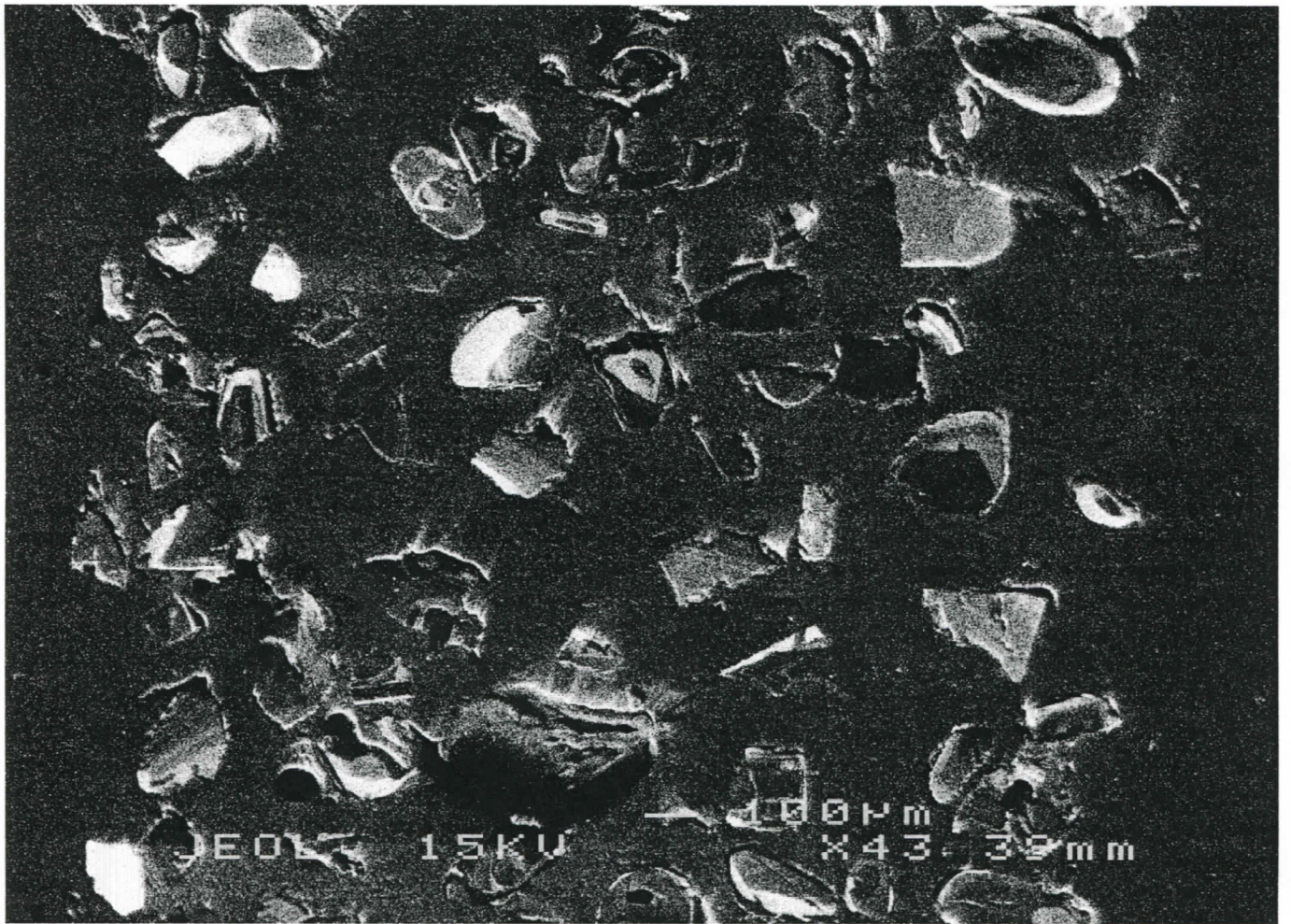


9C

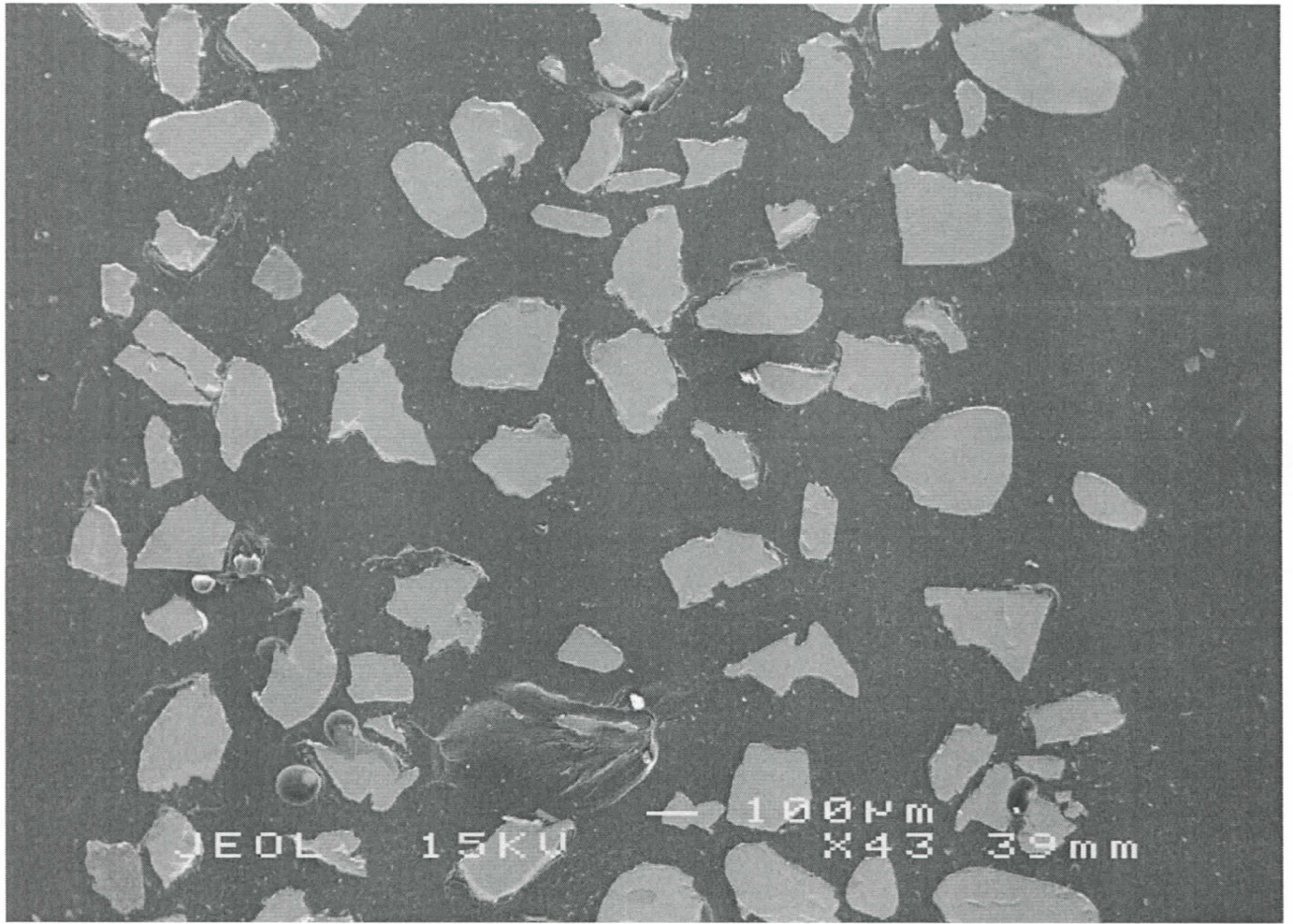


10A

06-64A

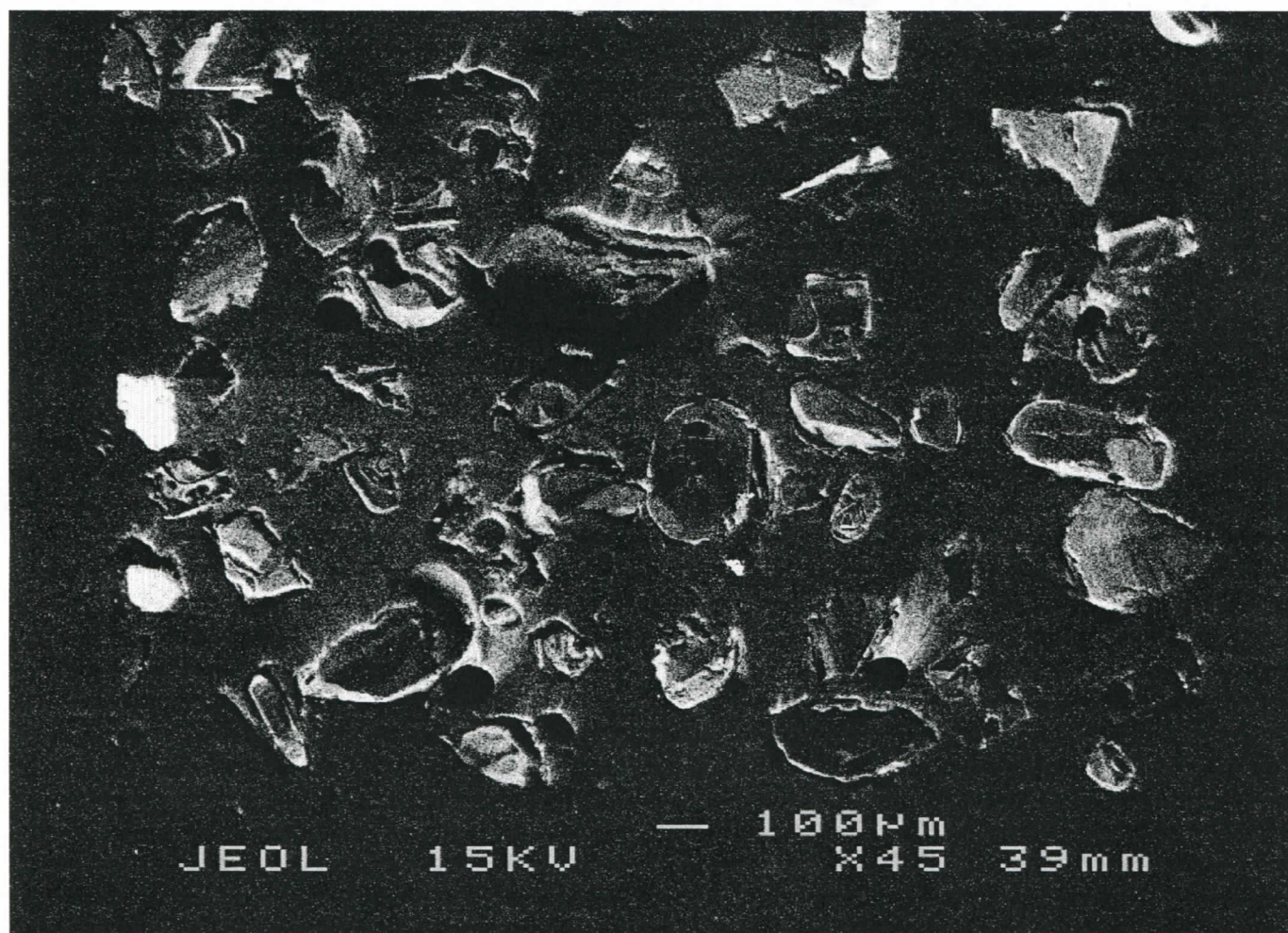
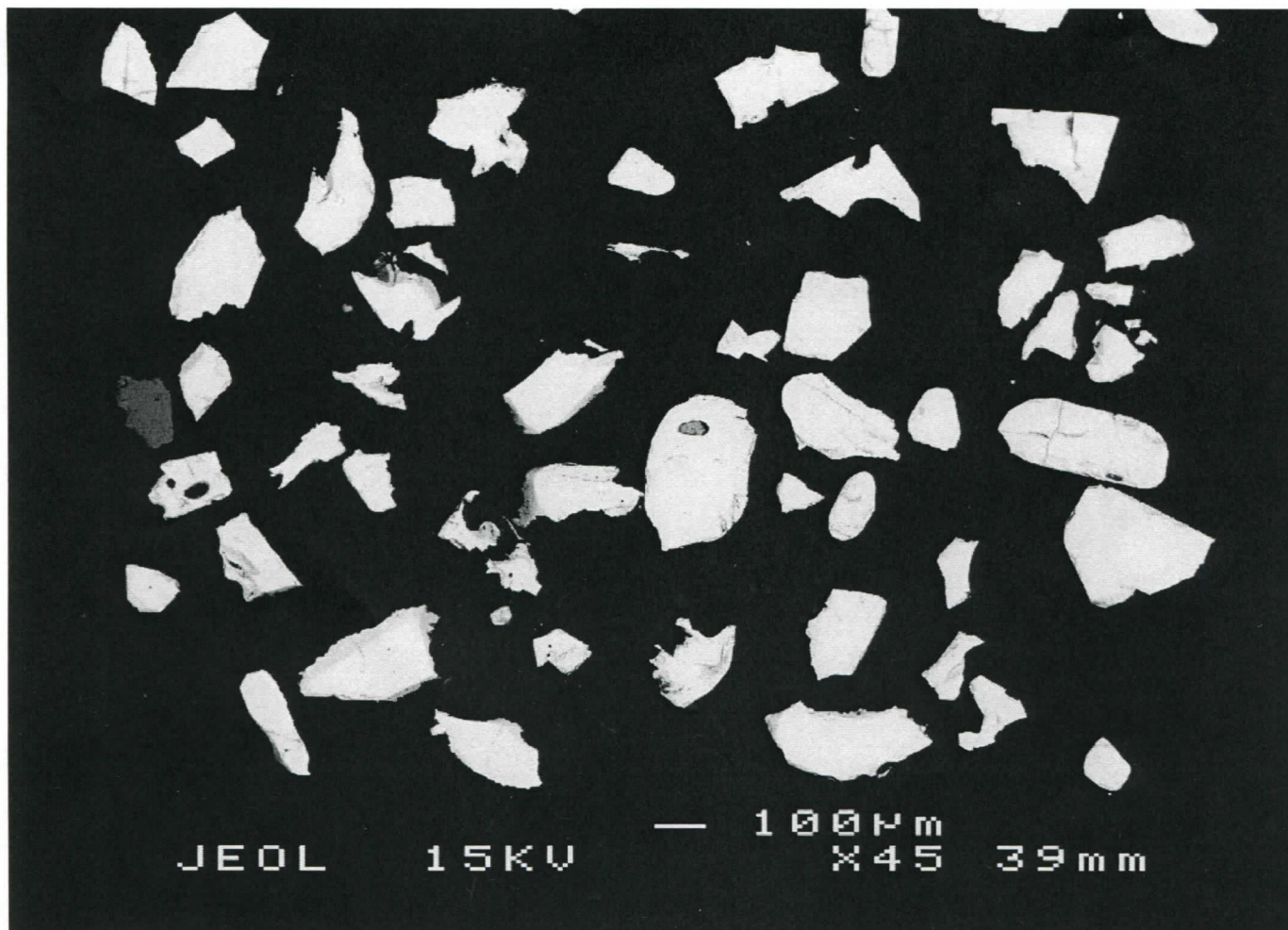


10B

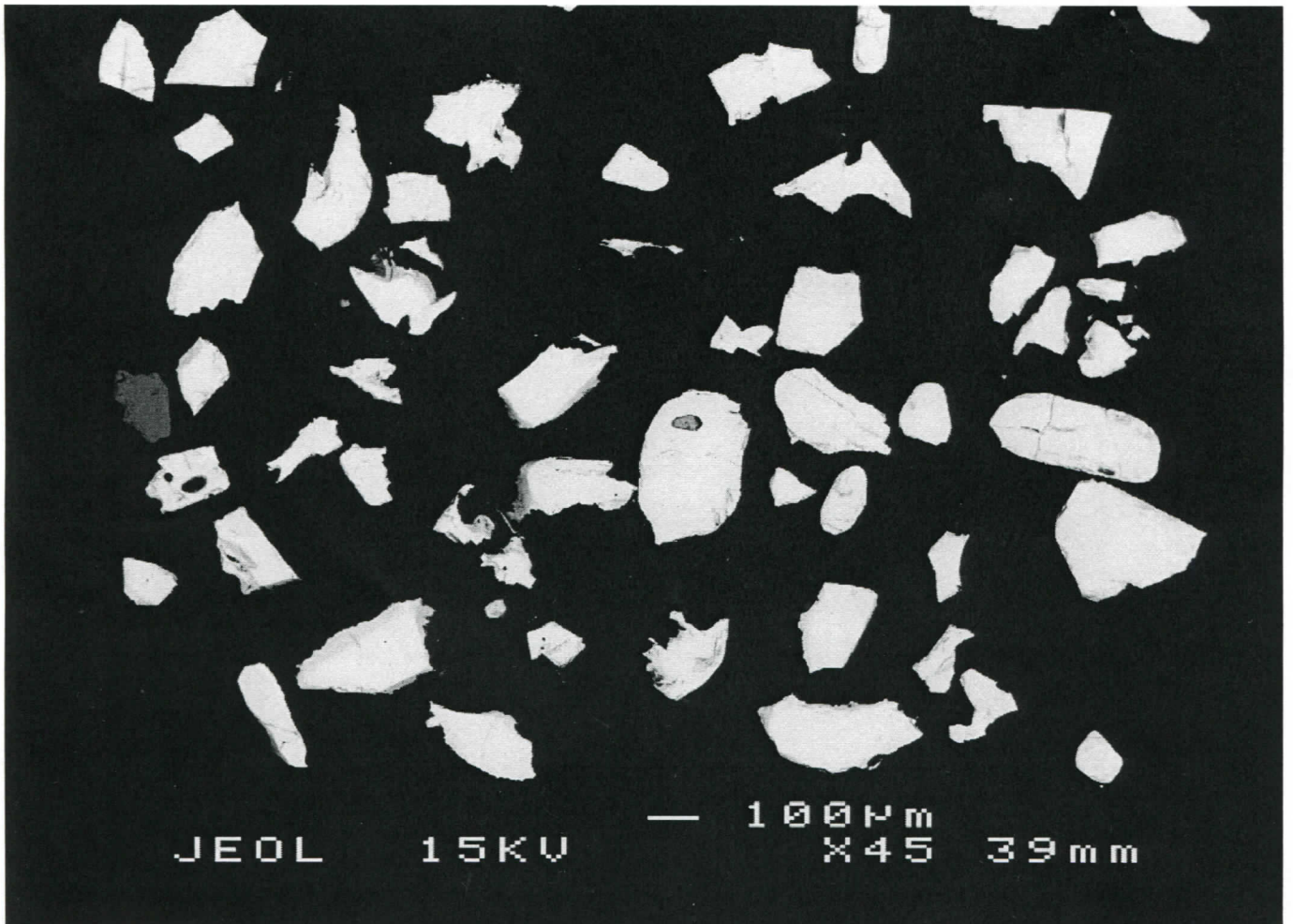


10C

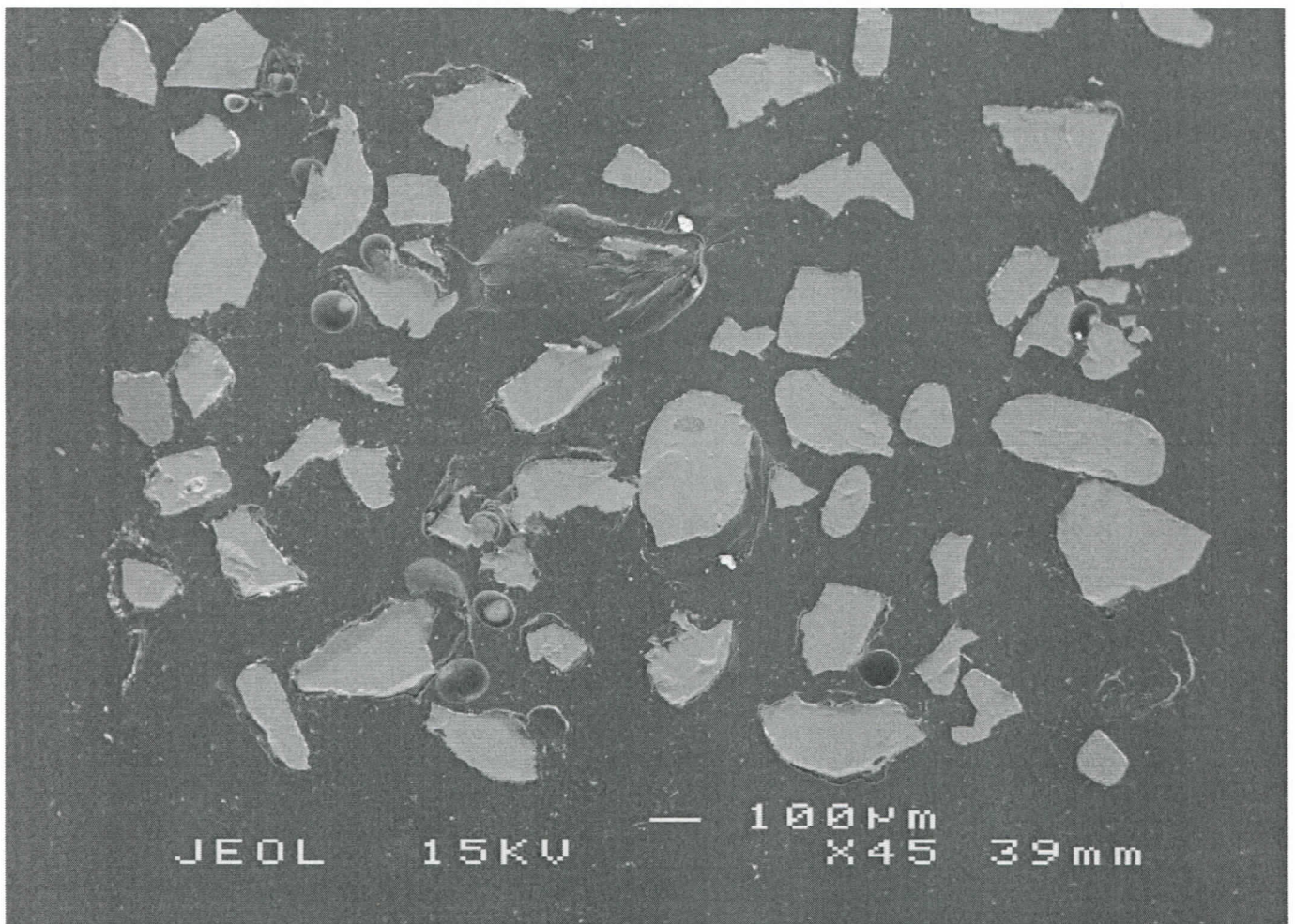
06-64A



06-64A



11A



11c

