

06-64

10/7/06

A = FB-03

NBS-611

B = FB-04

D23

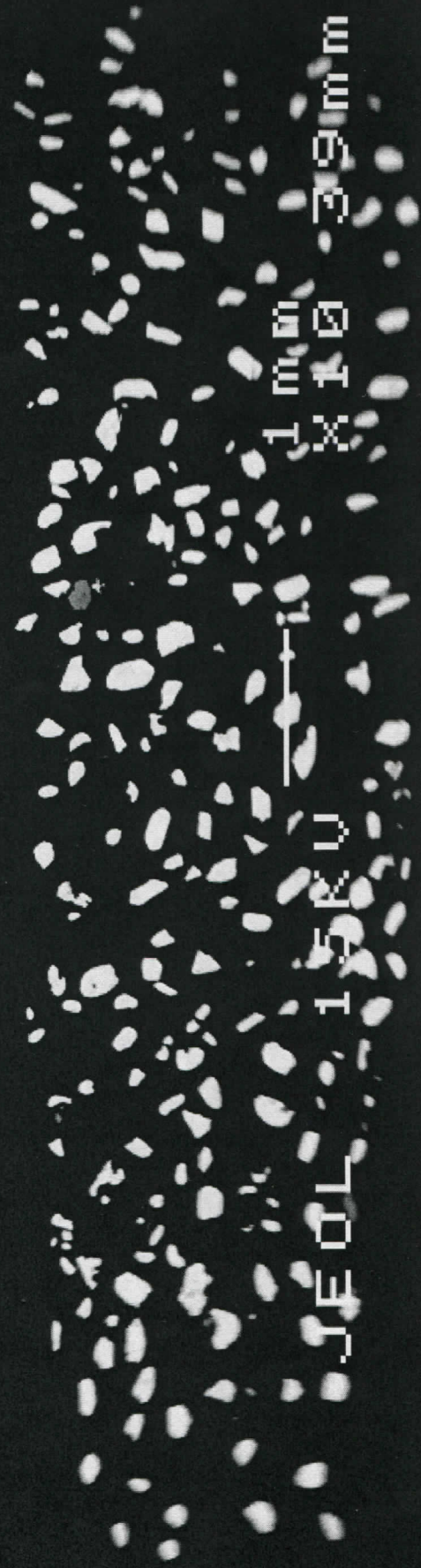
BR 266

SDA

1 mm  
X10 39 mm

JEOL 15KV

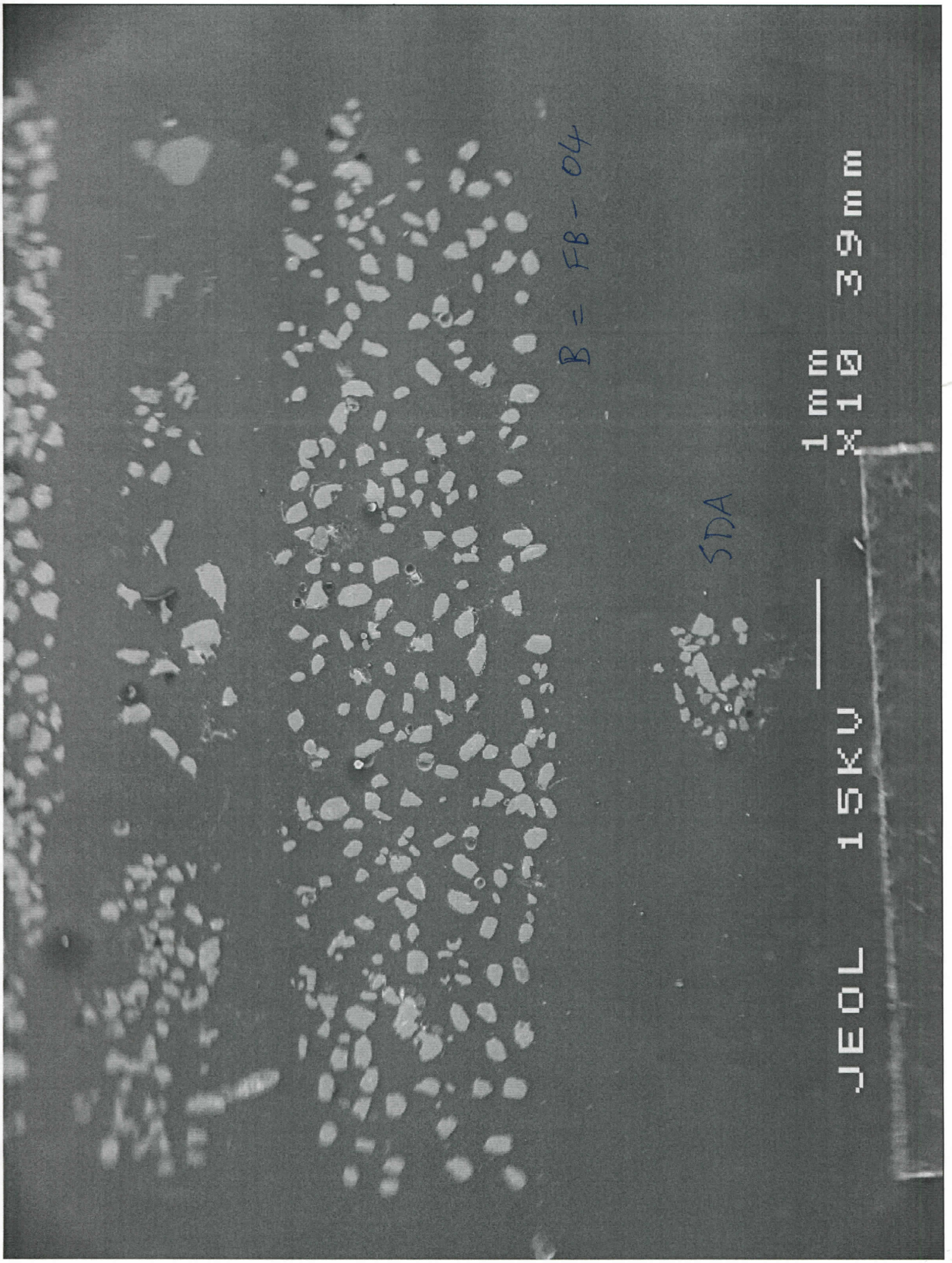
10/28/06  
↑



1 mm X 10 3.9 mm



JEOL 15KV

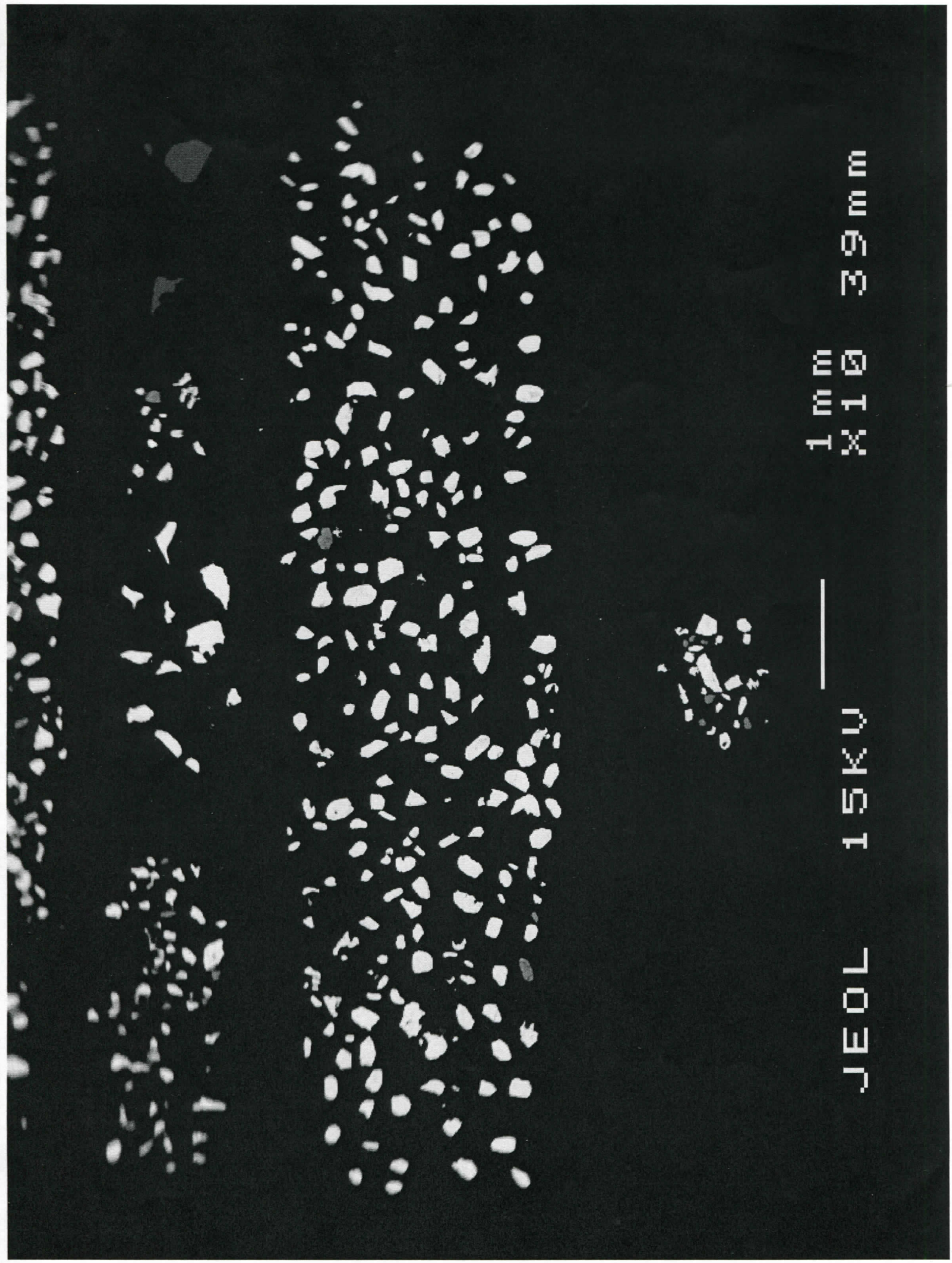


B = FB - 04

SDA

1 mm  
X10 39 mm

JEOL 15KV



1 m m 39 m m  
X 10

JEOL 15KV

TKS1 703F