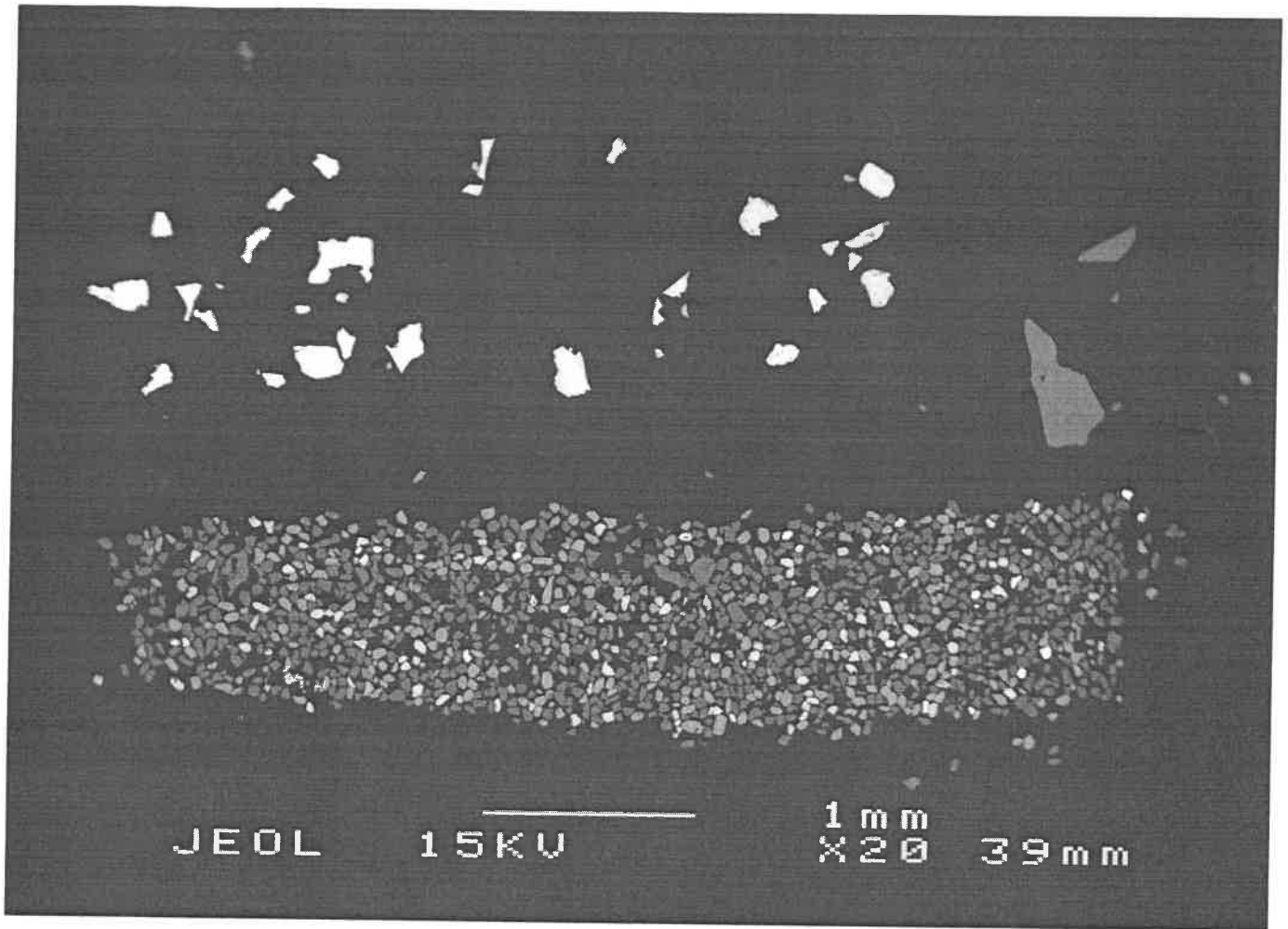


08-04

26/8/08



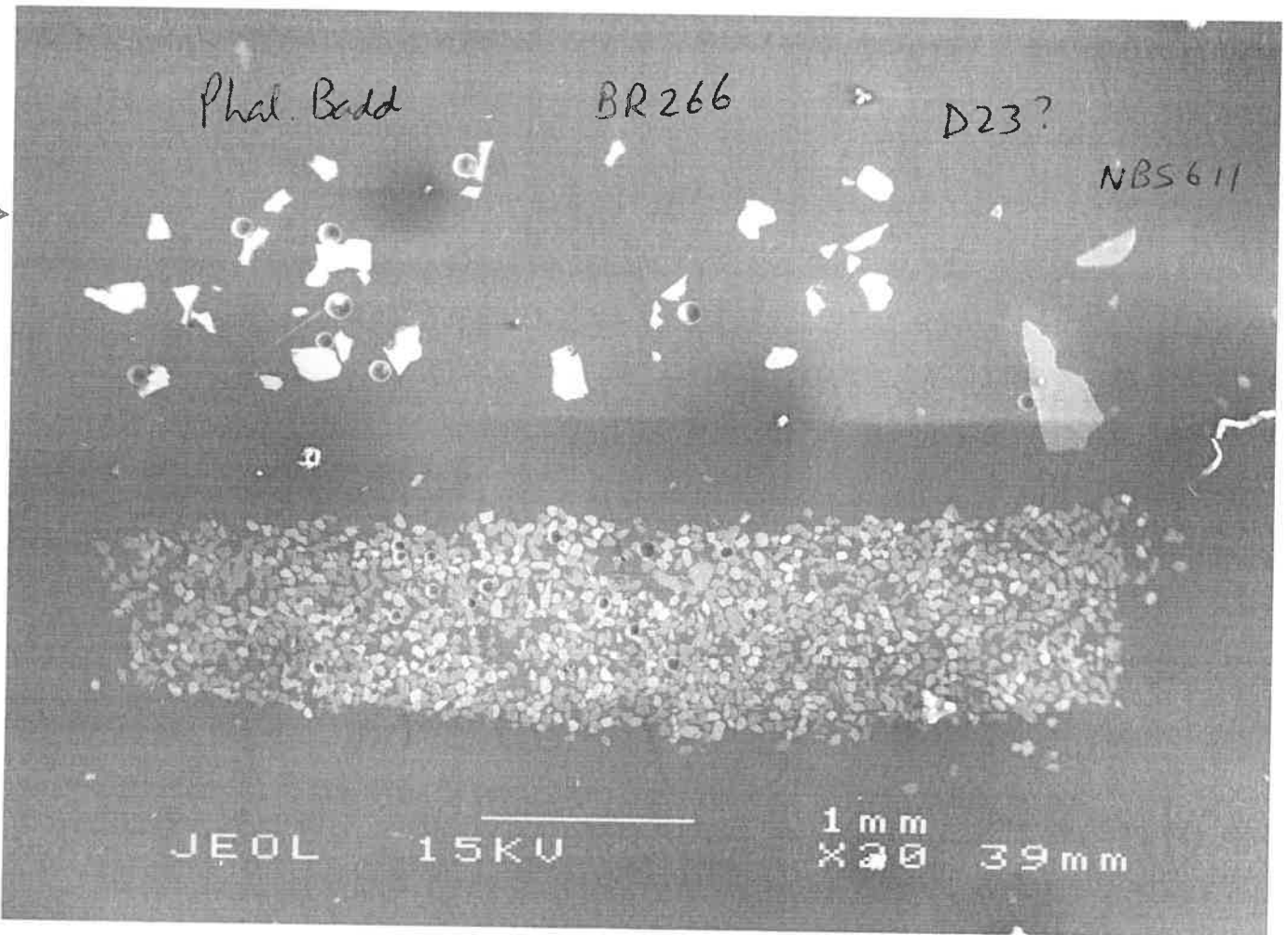
20/11/08
25/11/08
→

Phal. Bedd

BR266

D23?

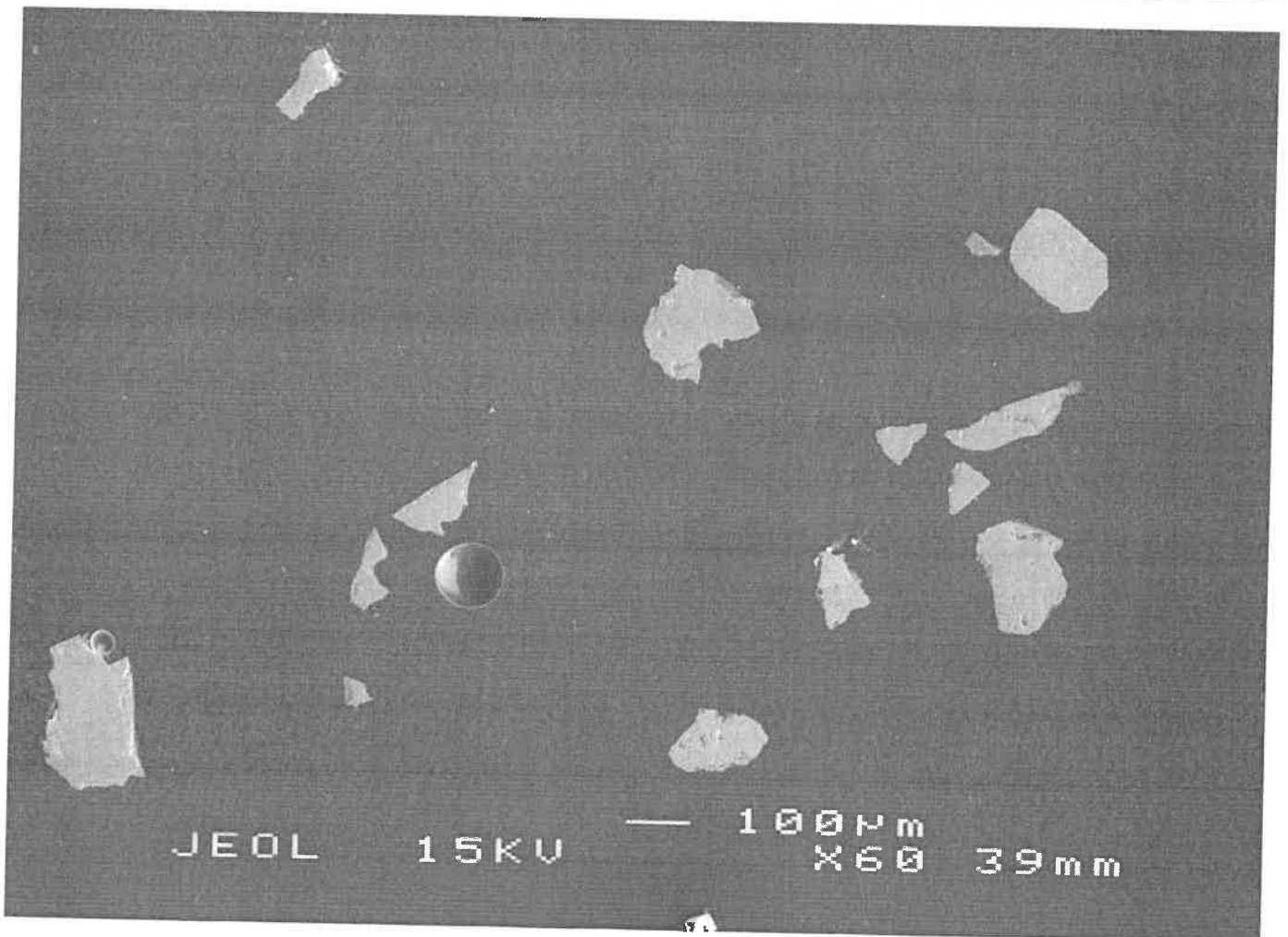
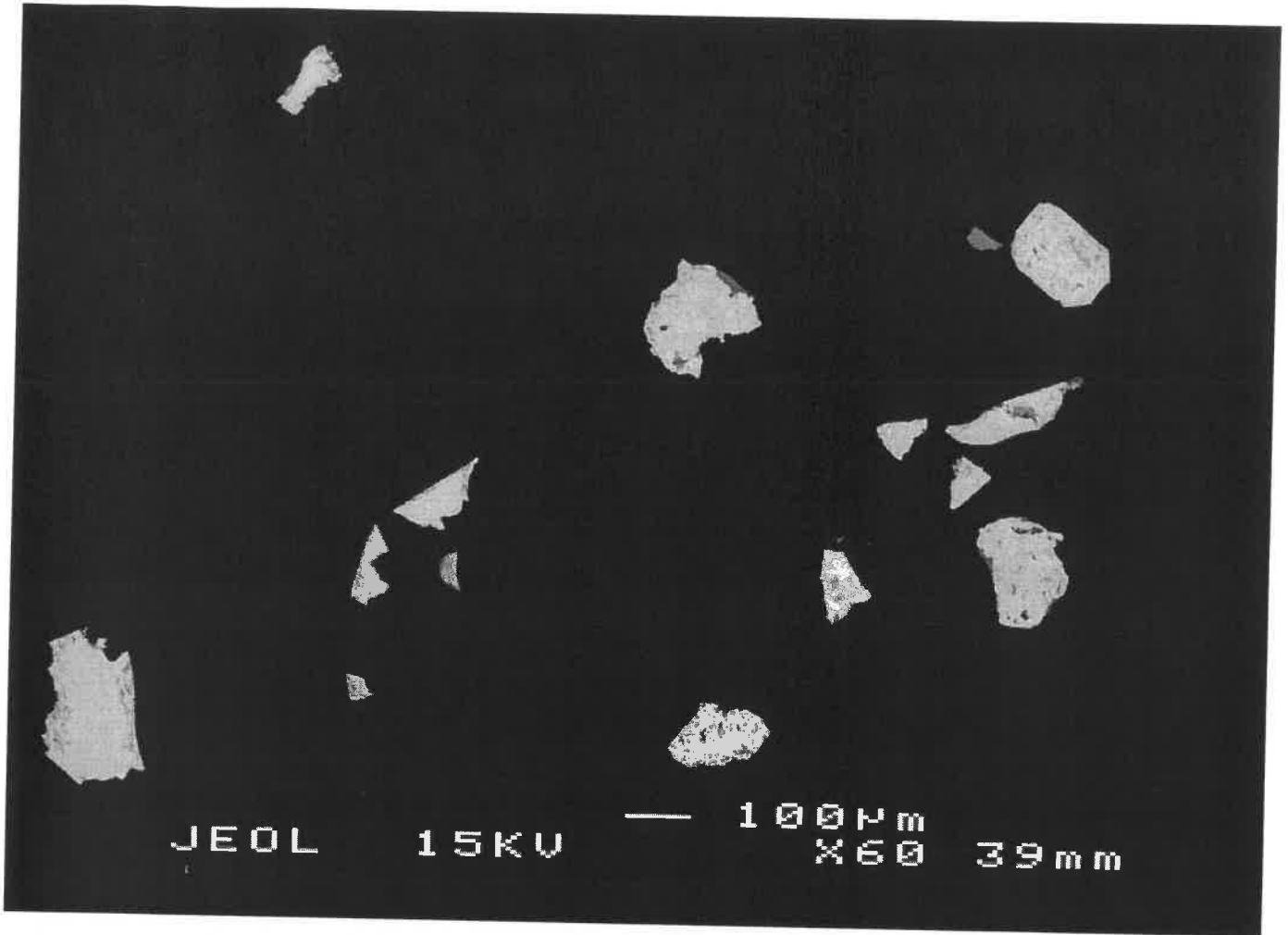
NBS611



A

08-04

D23 / BR266 ?



08-04

D23/BR 266 ?

Phalac.

JEOL

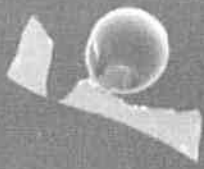
15KV

—

100µm

X45

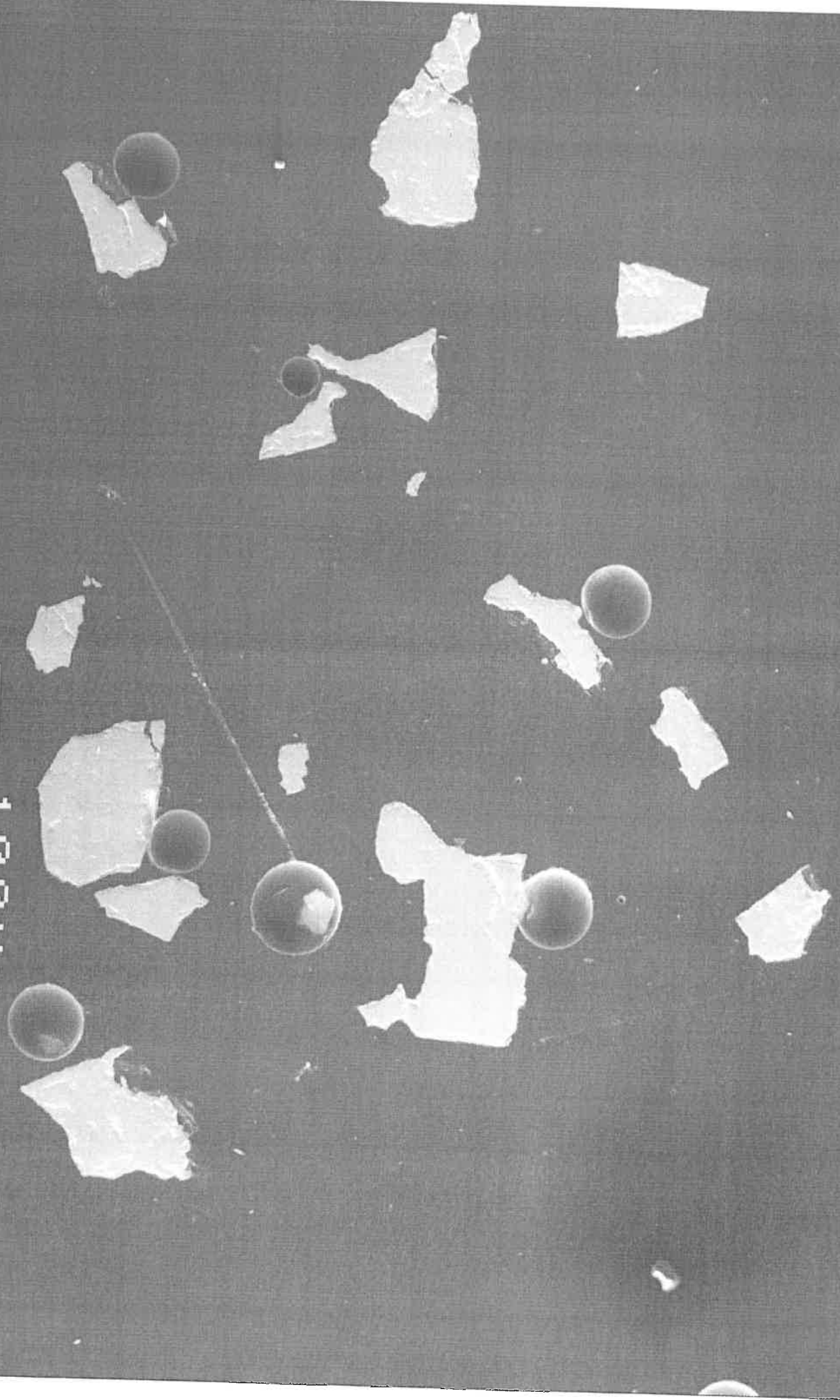
39mm



08-04

Phal. Badd.

JEOL 15KV
100µm
39mm



~~08~~ 08-04

NBS

1EOL

15KU



100µm

39mm

