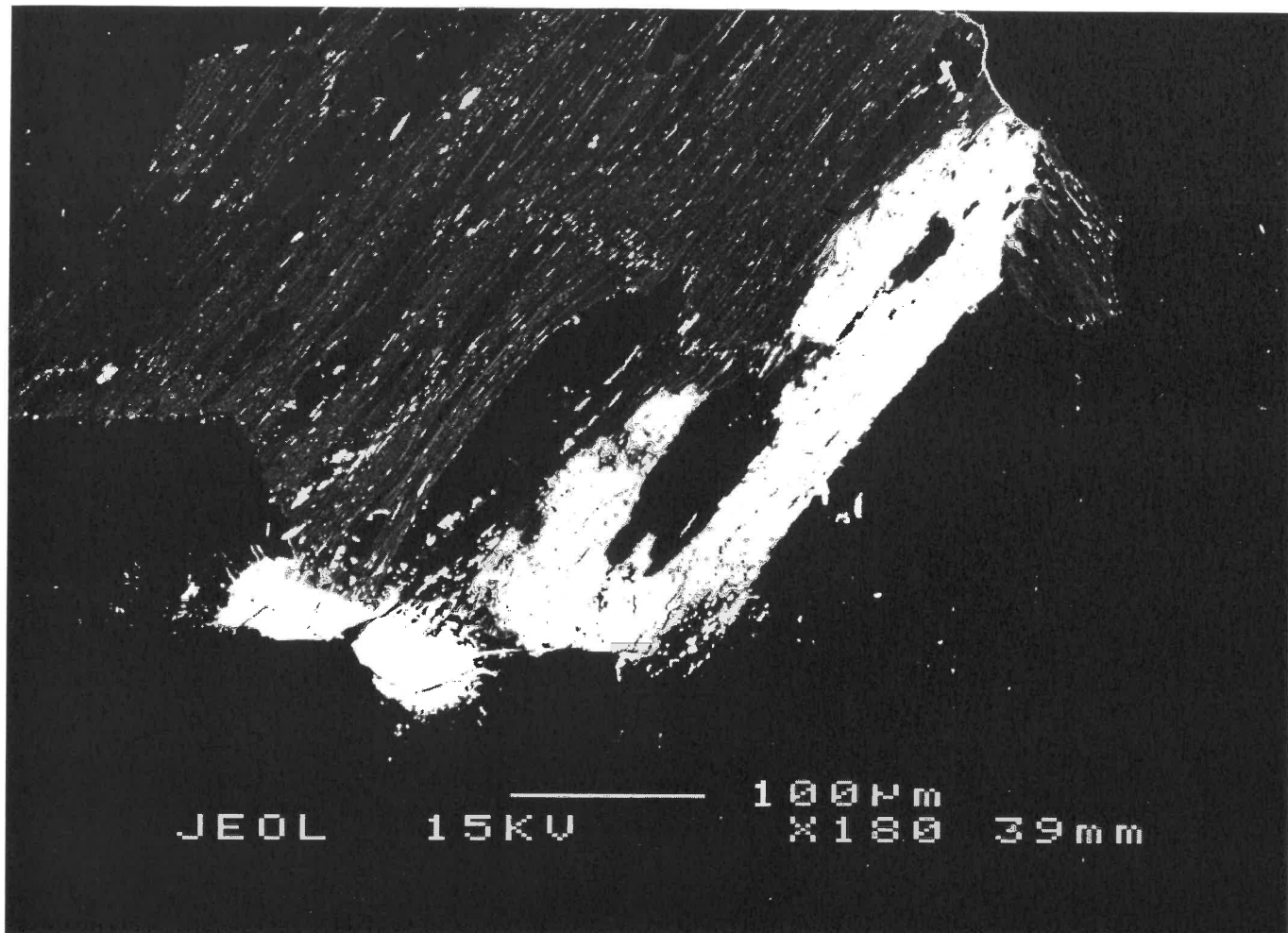


Bromer Bay

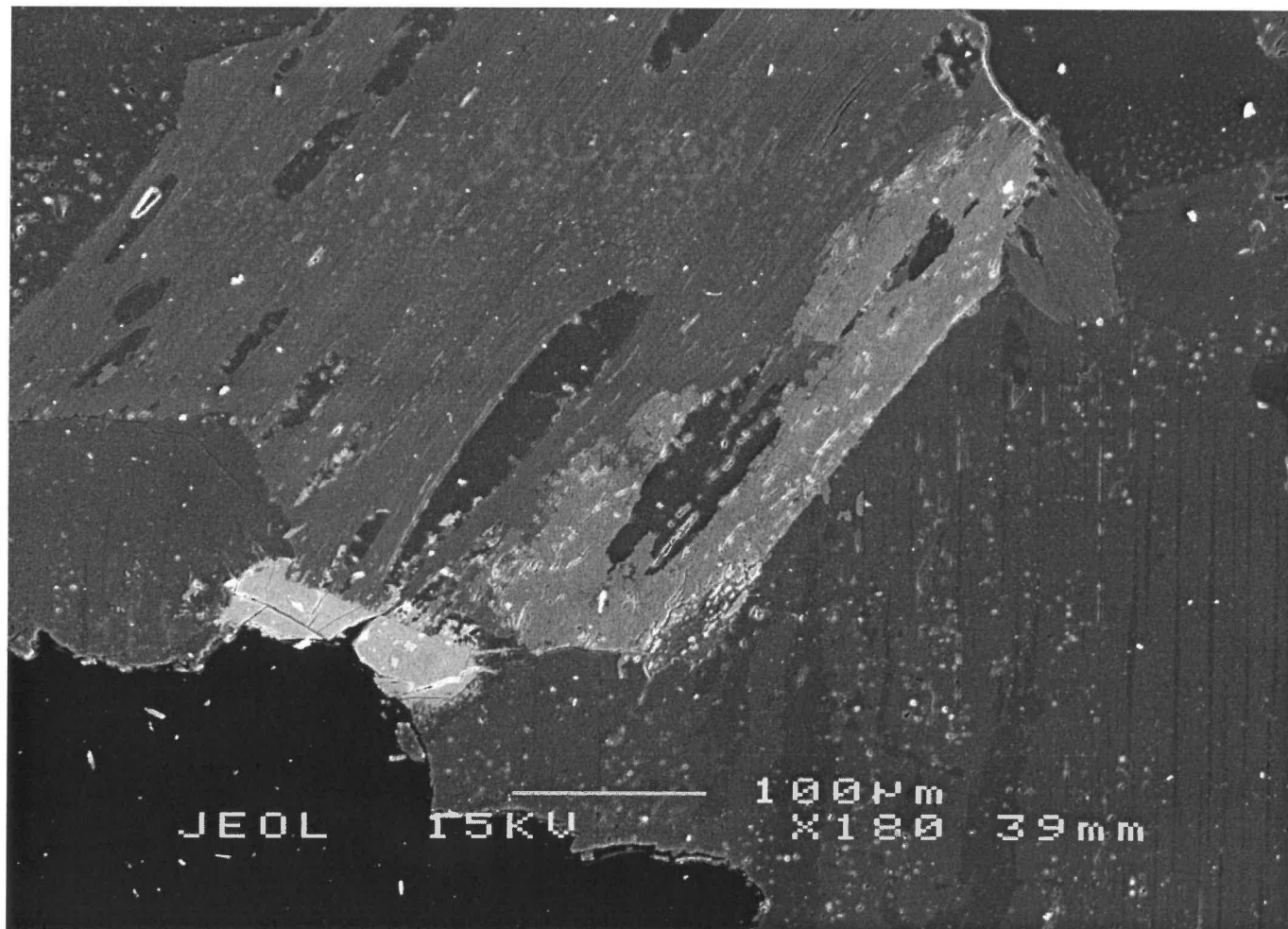
FBO1

05/05

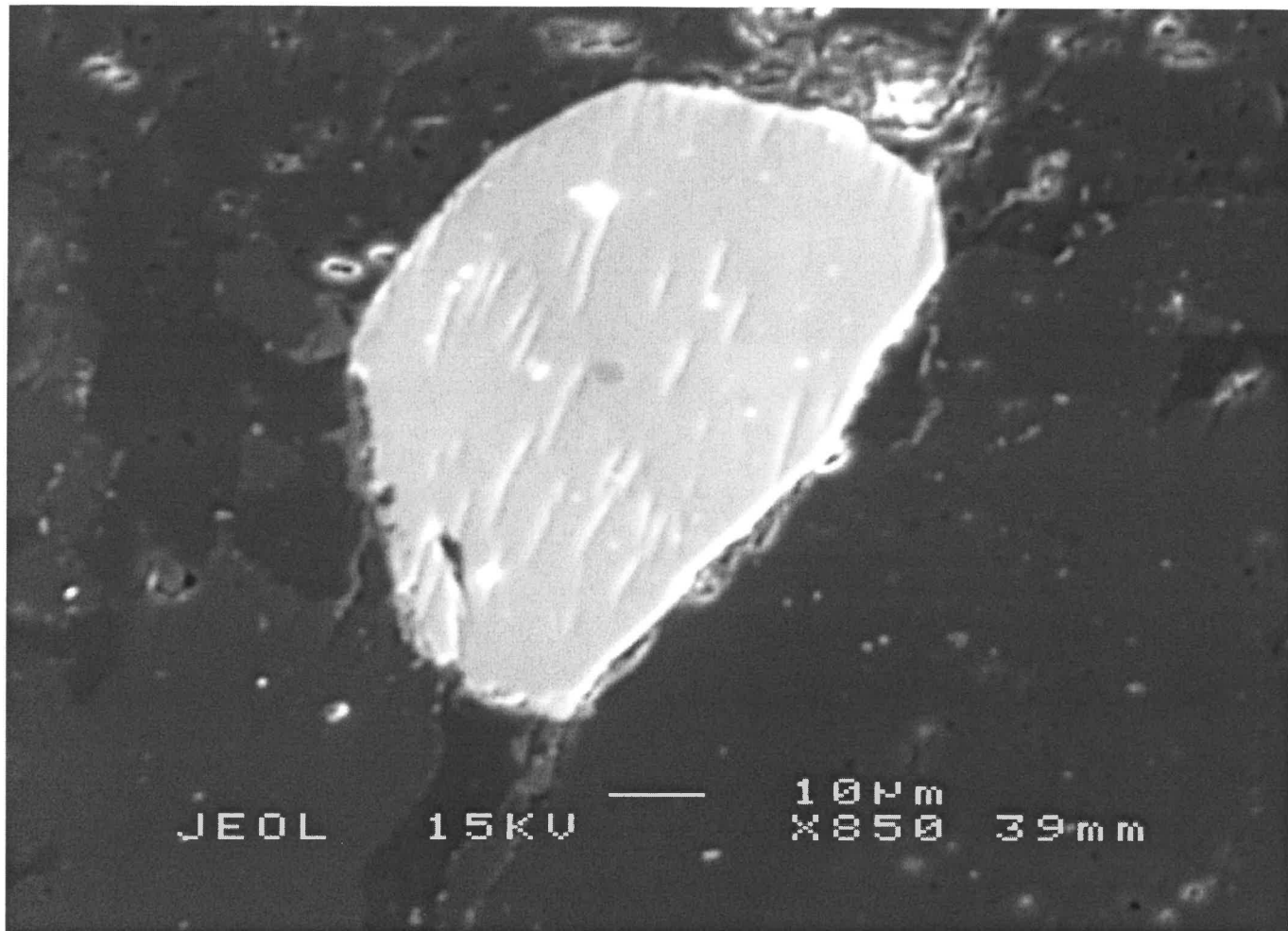


16'

NB
mineral

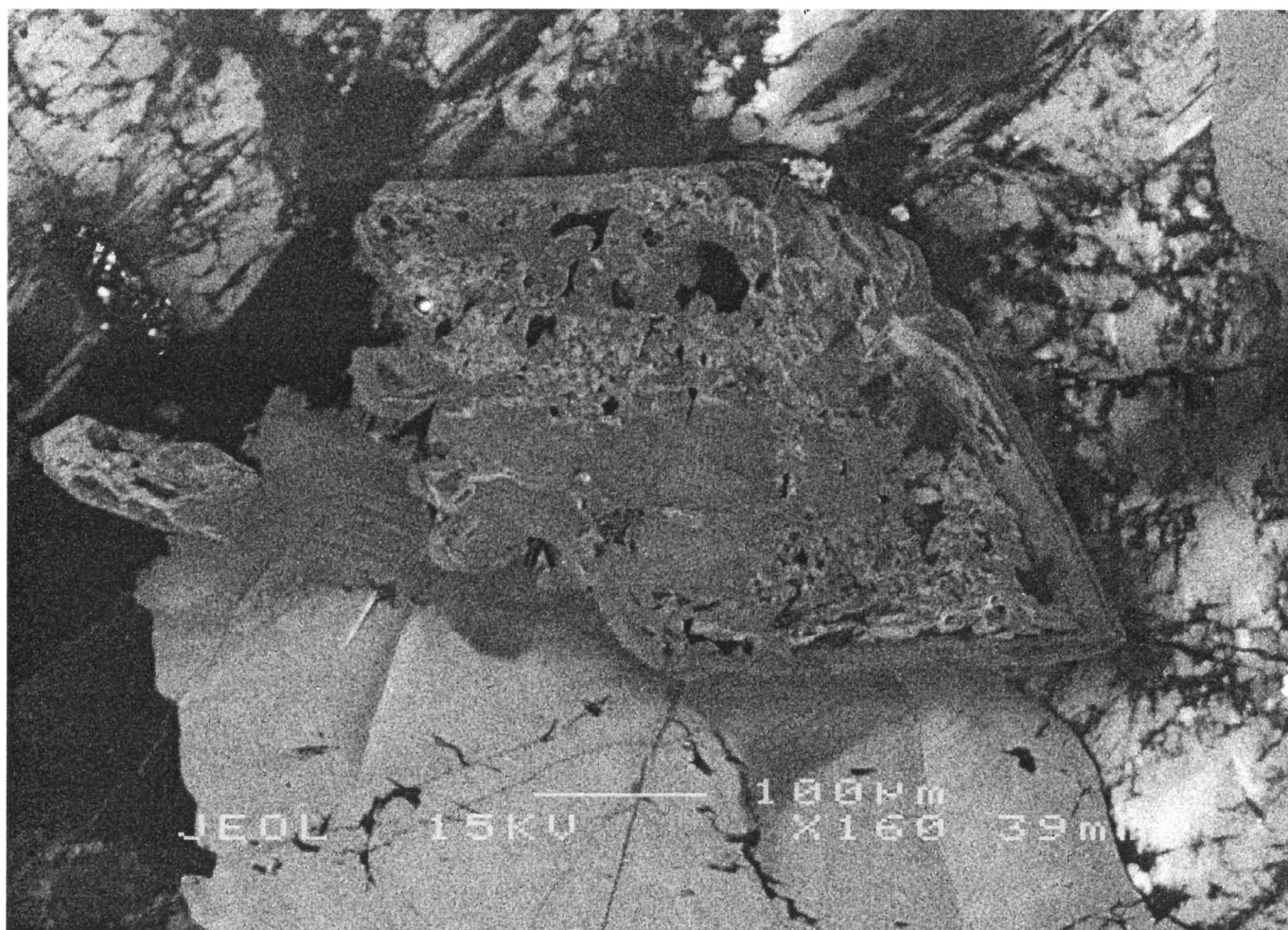


15



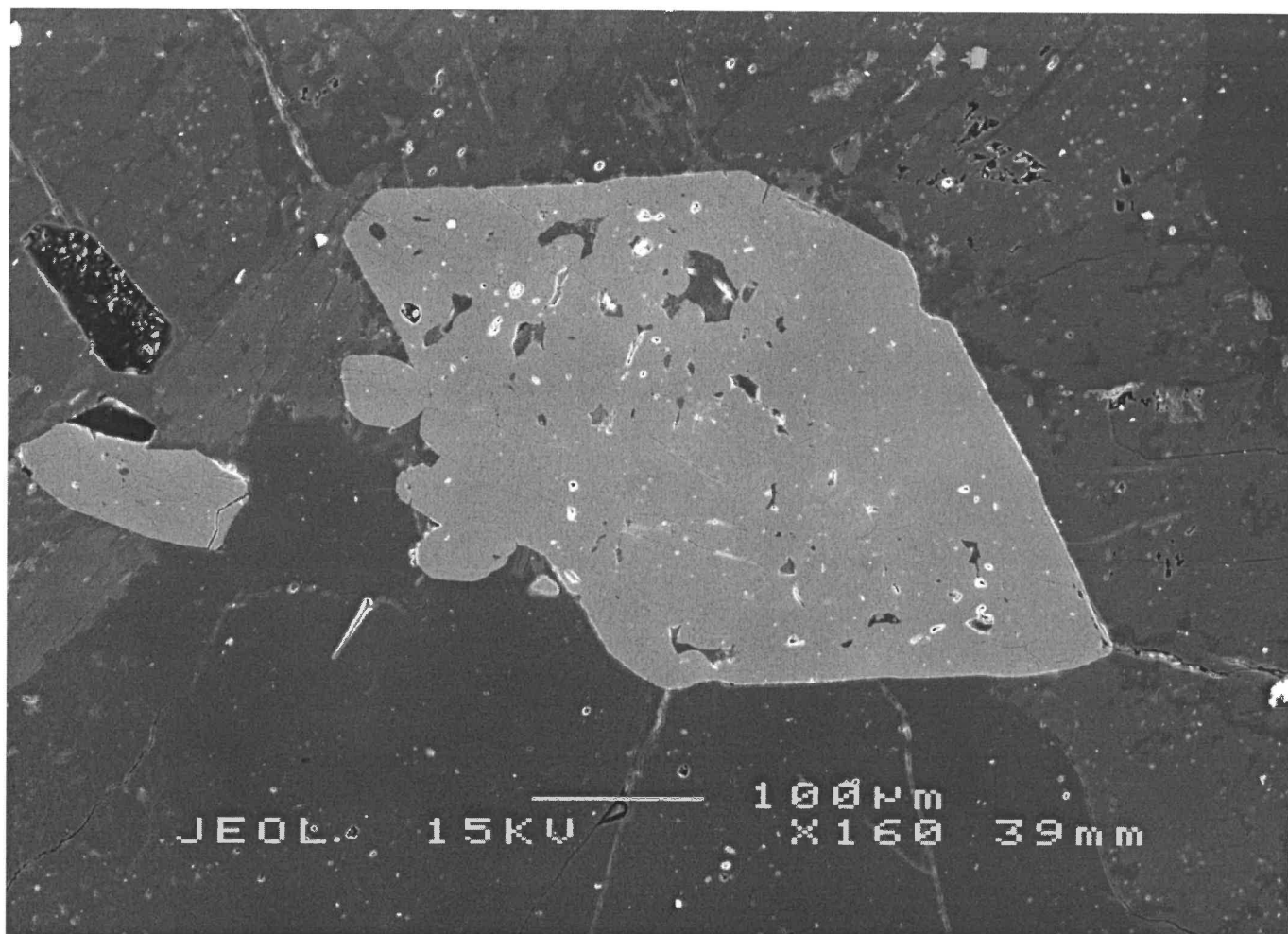
2s

m2



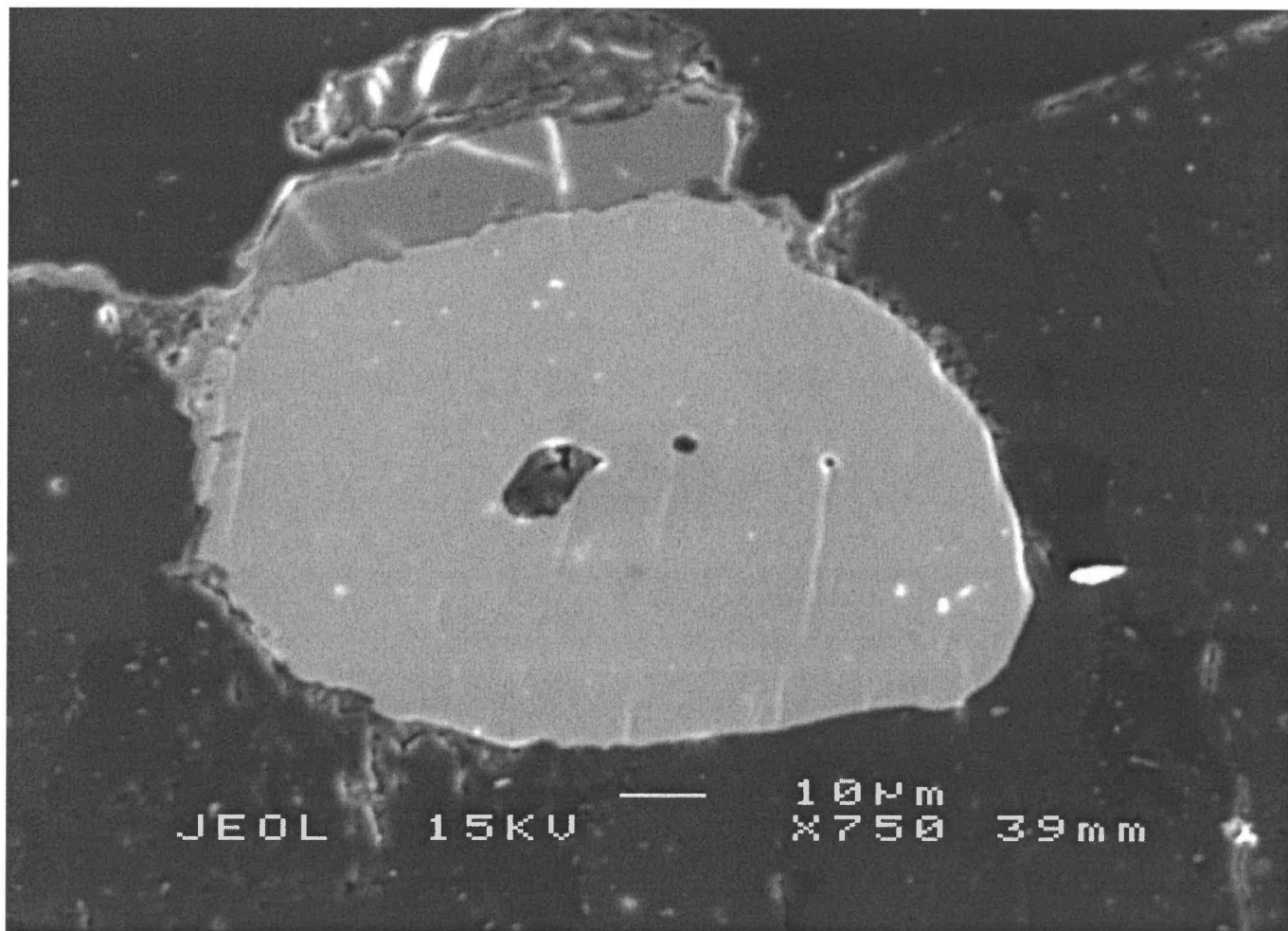
3c

2R



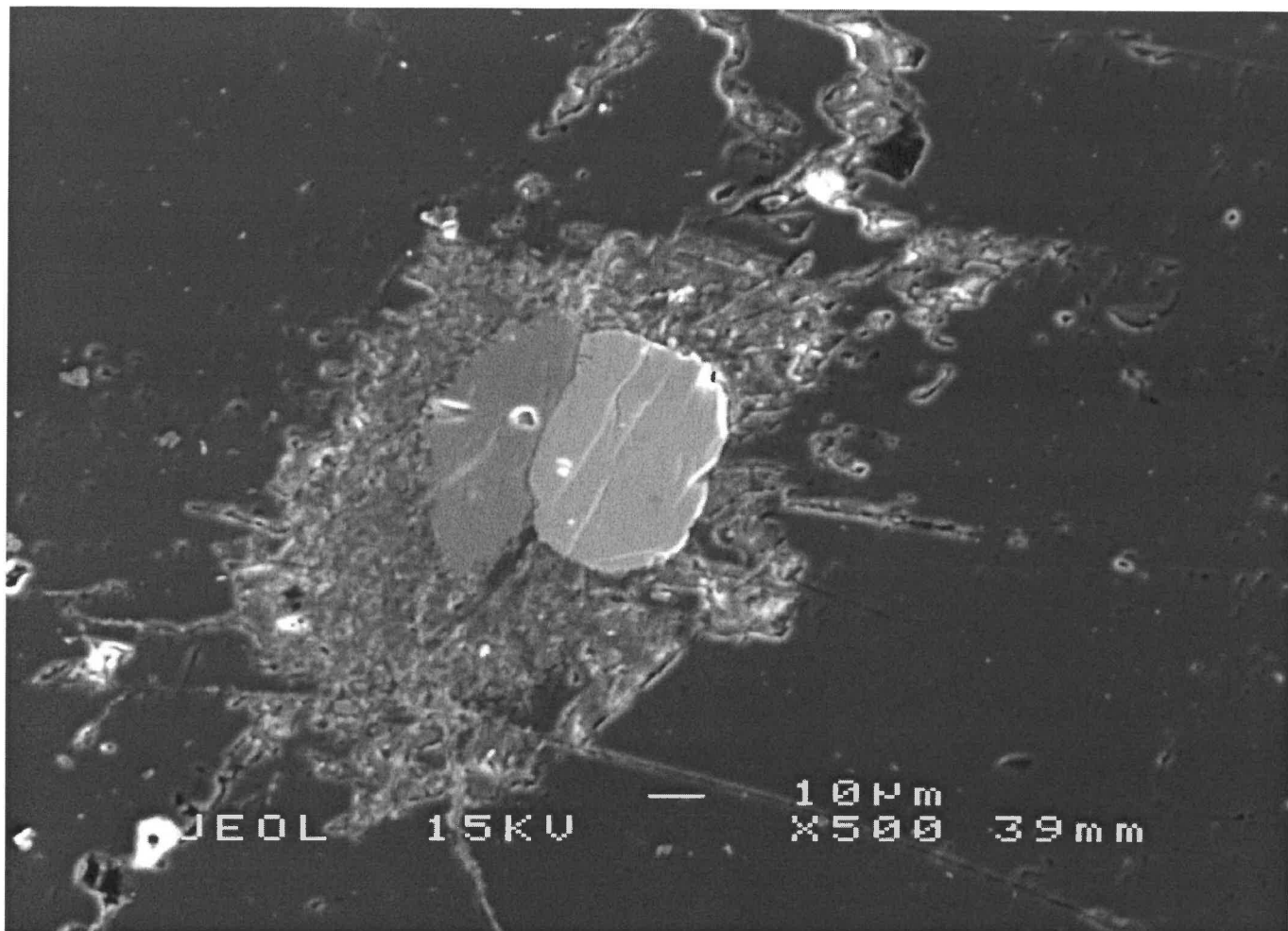
3s

2R



4s

mz



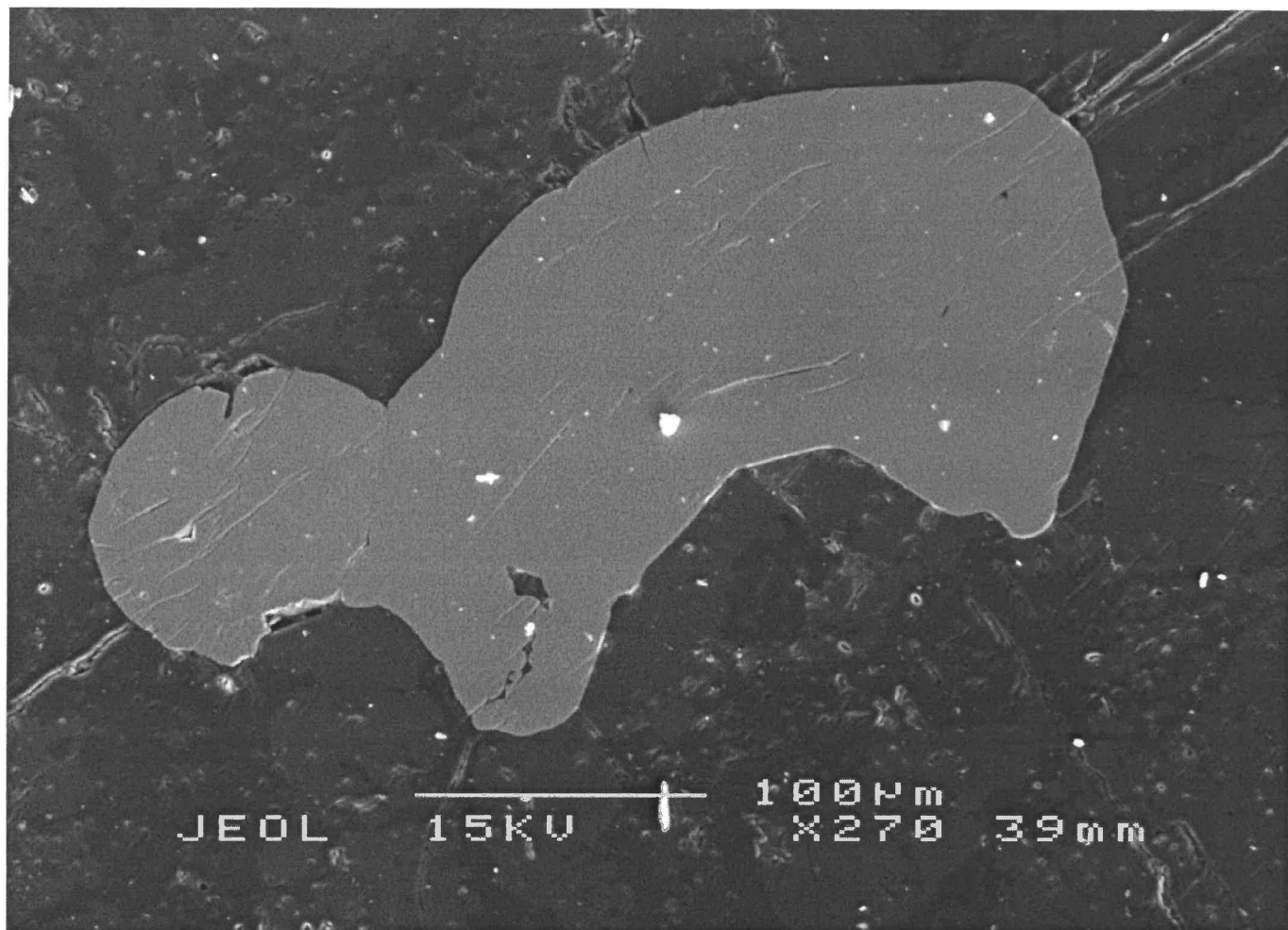
SS

m2



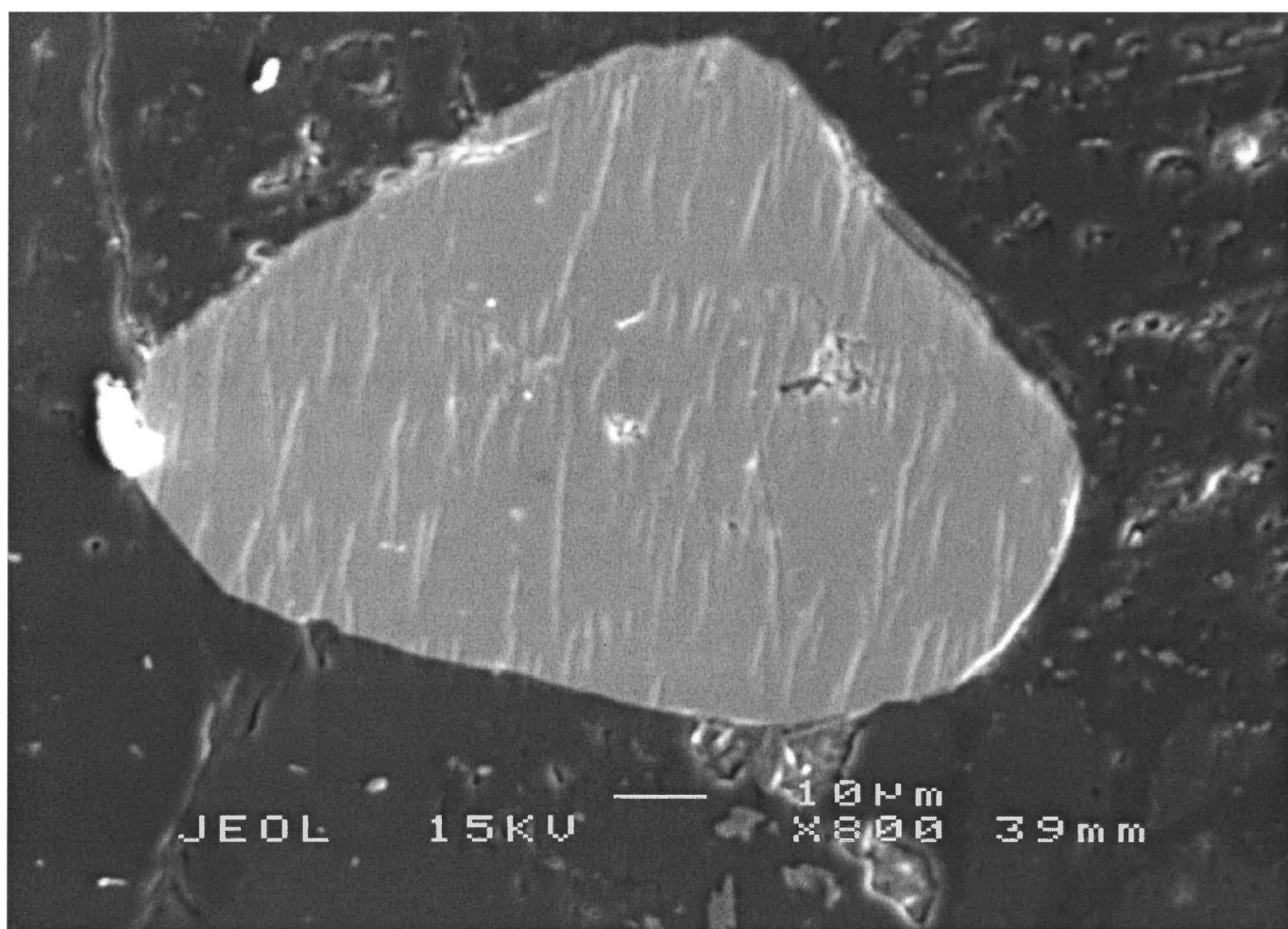
6c

2R



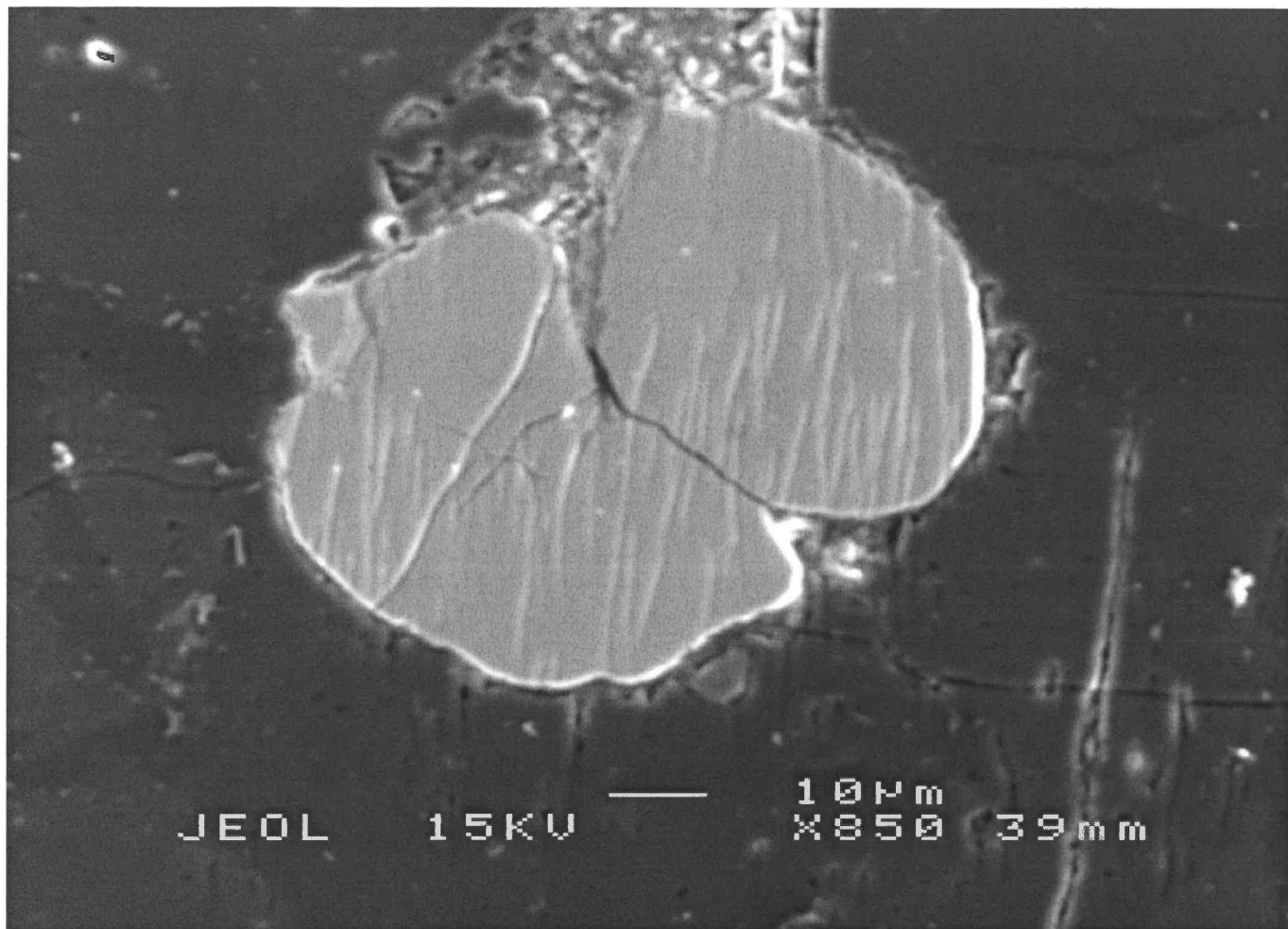
6s

2R



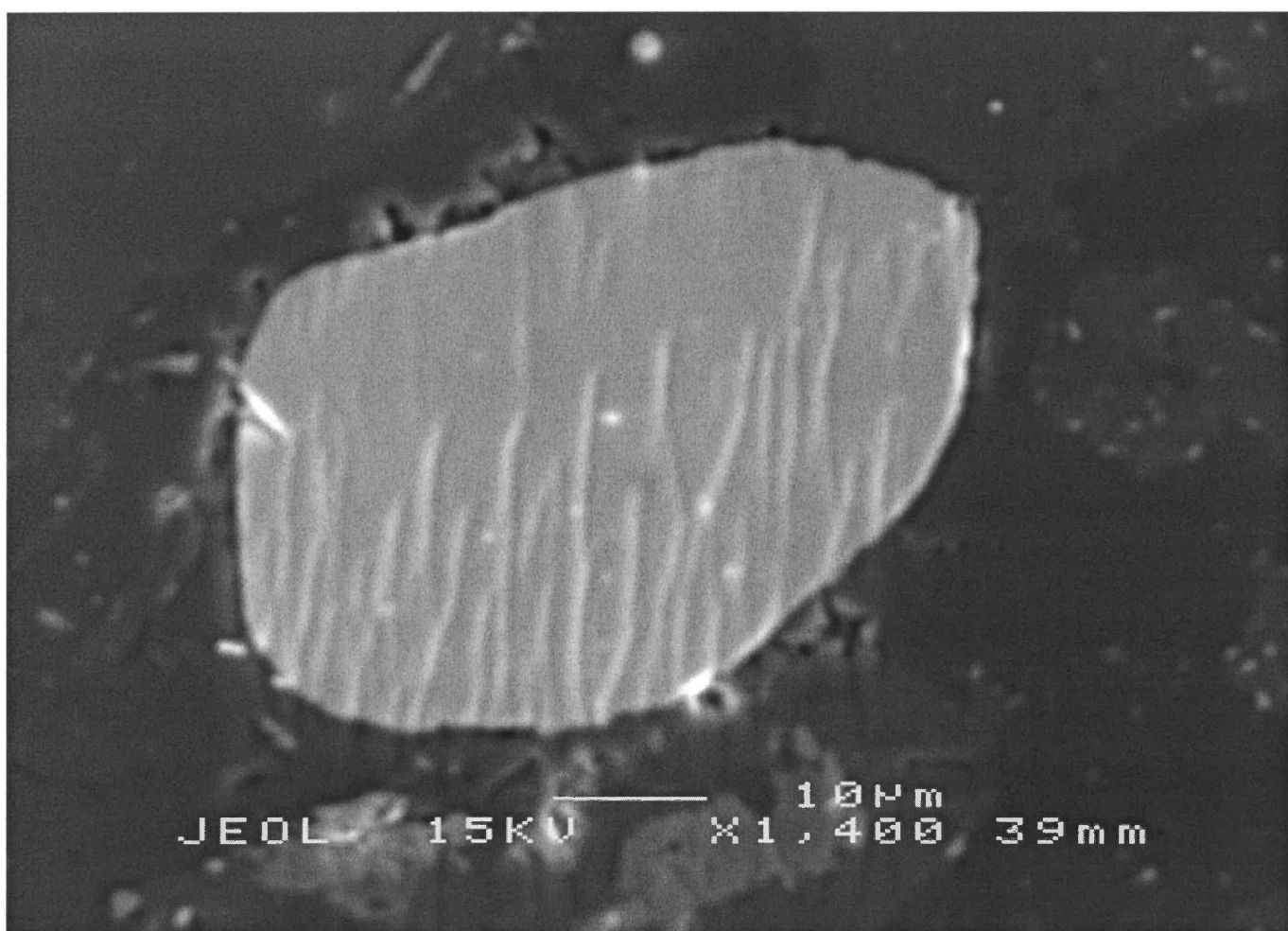
7s

mz



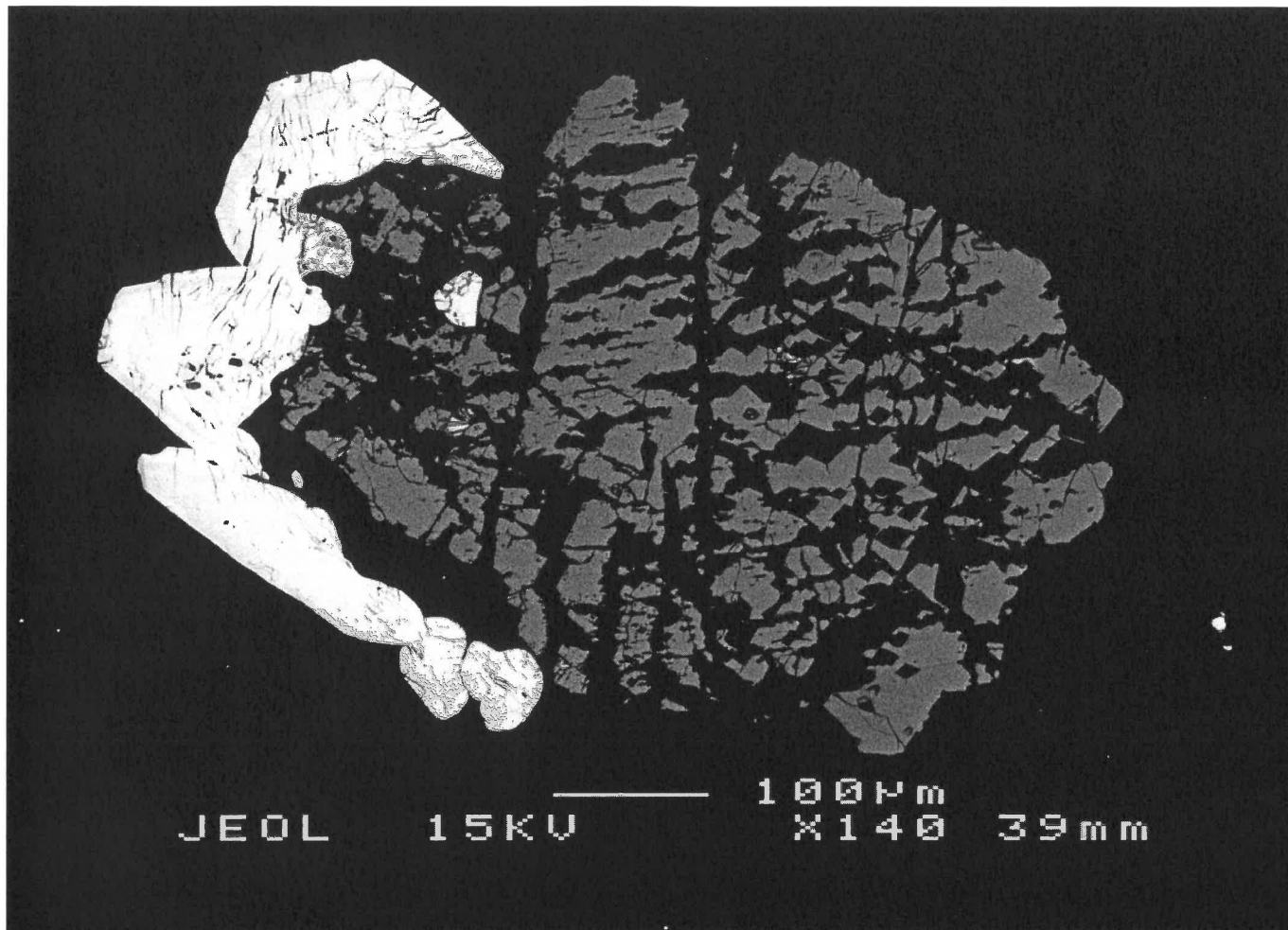
8s

m2



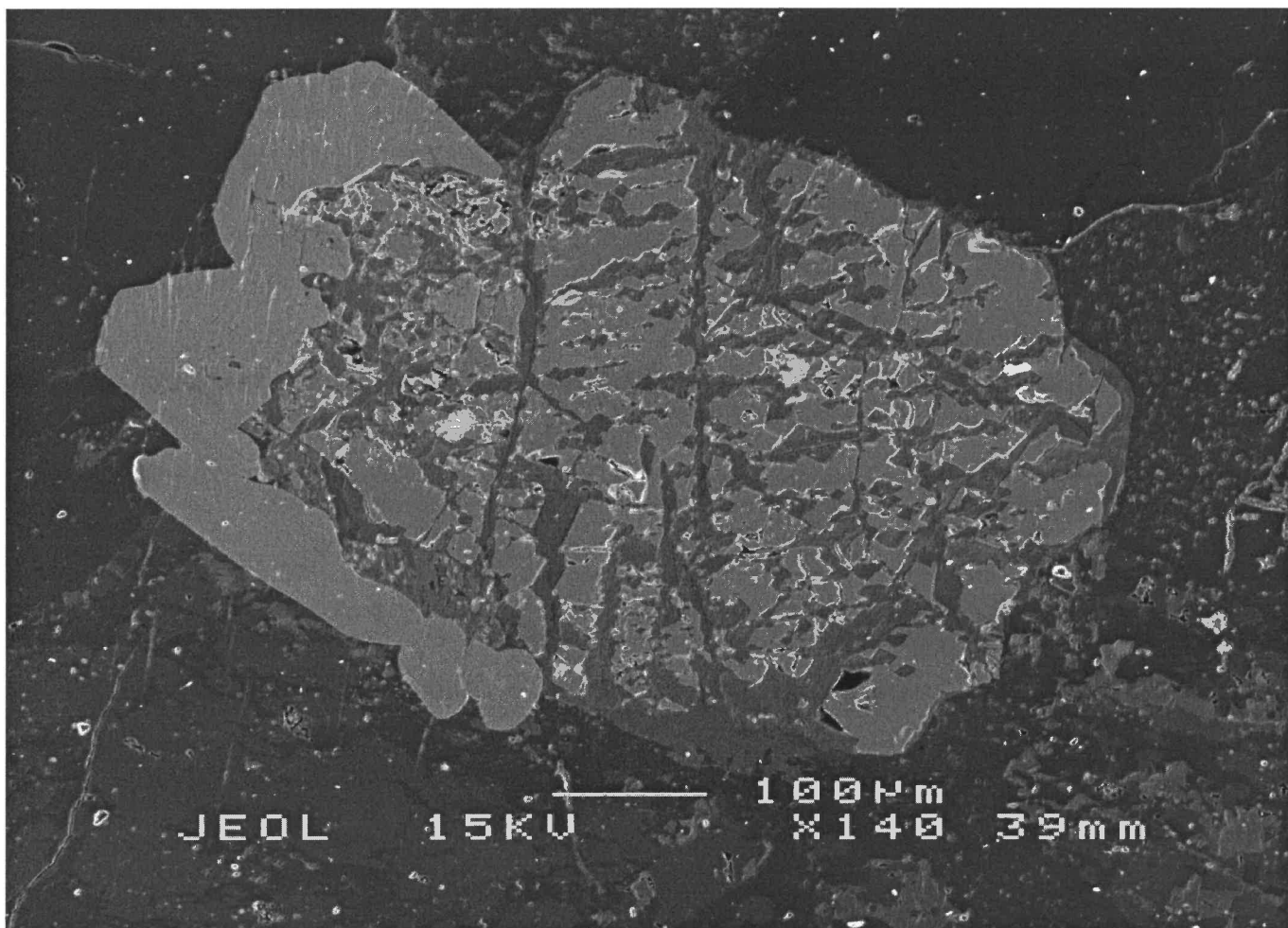
qs

m2



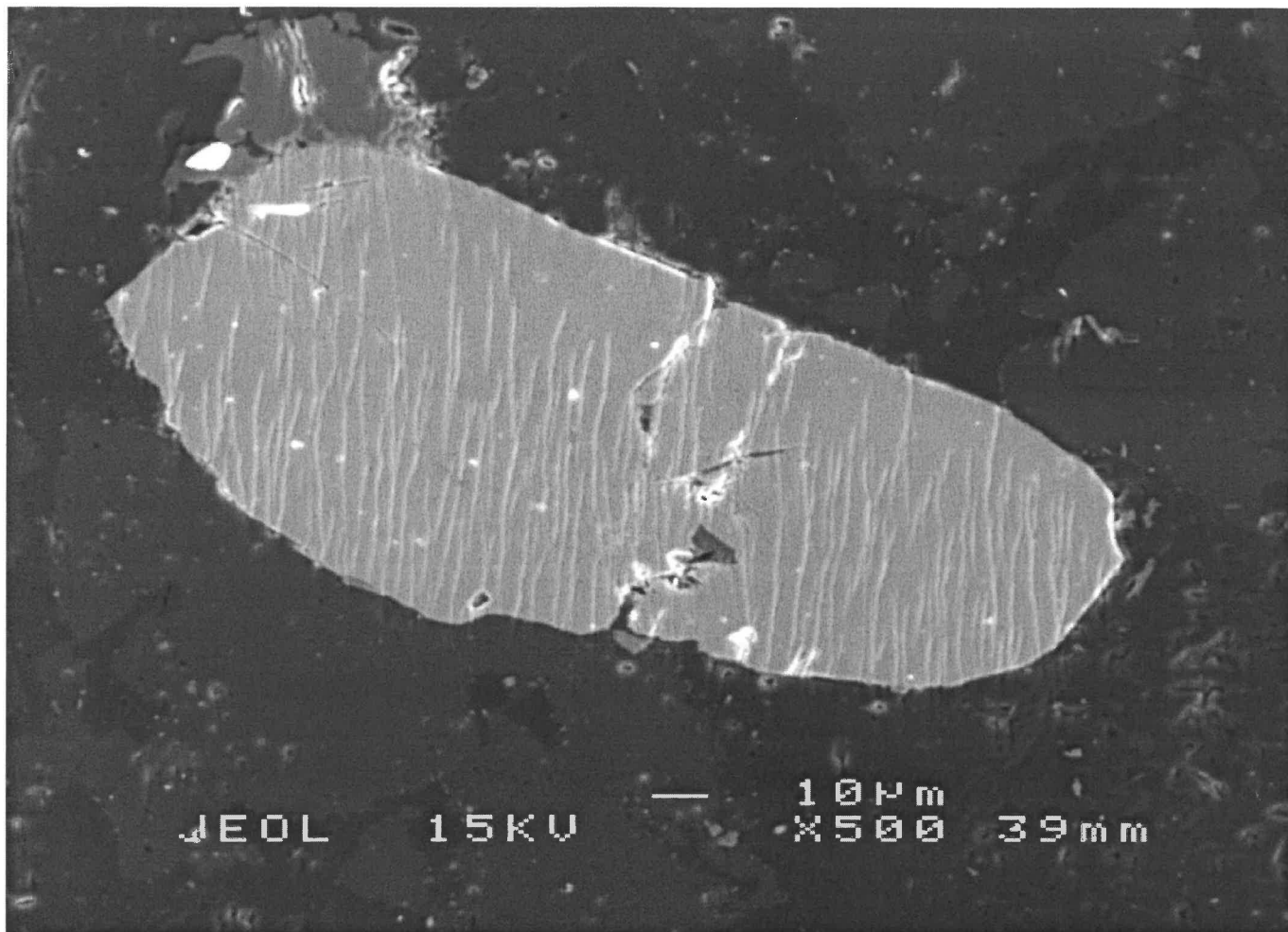
106

Zr



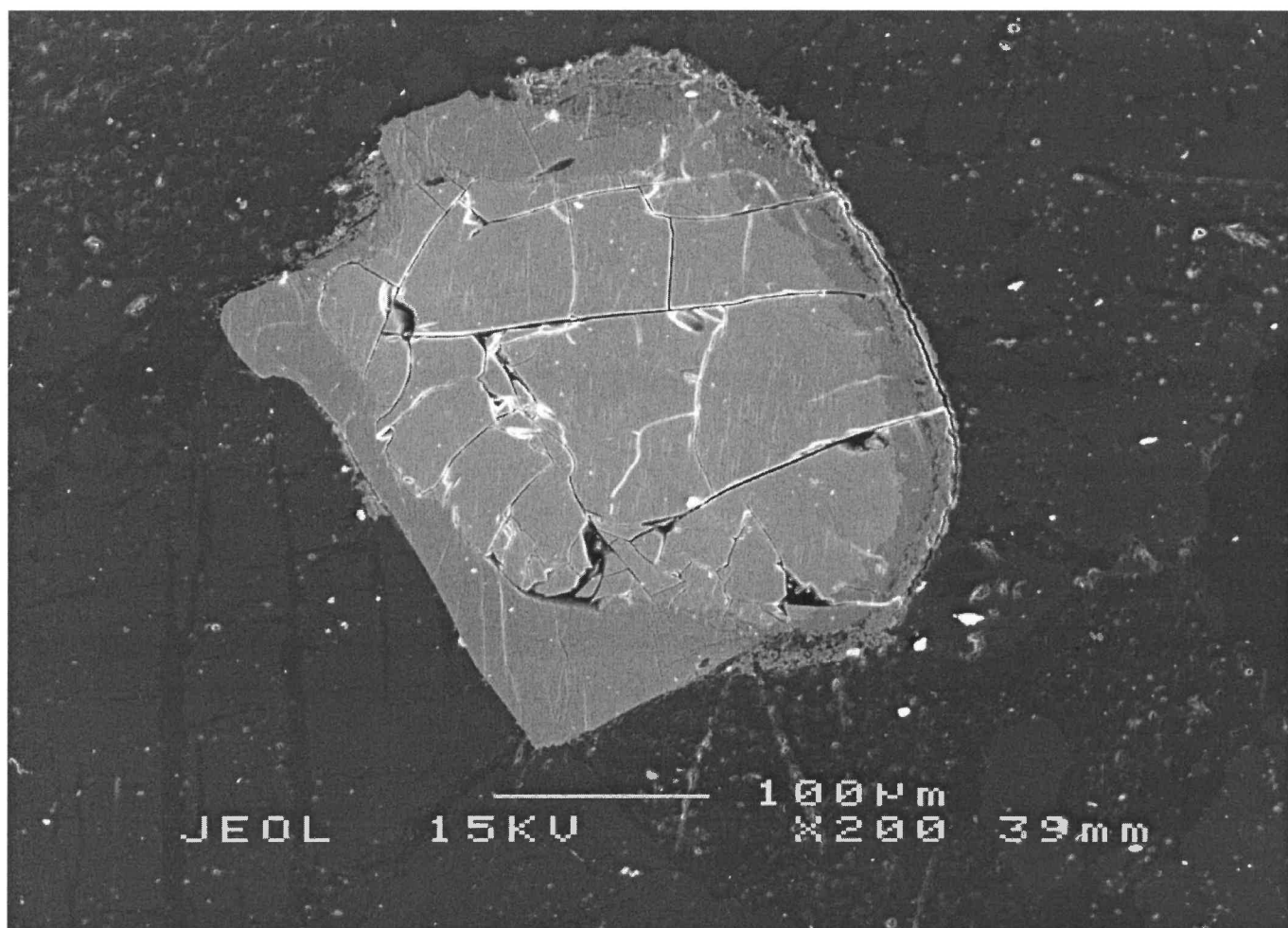
105

Zr



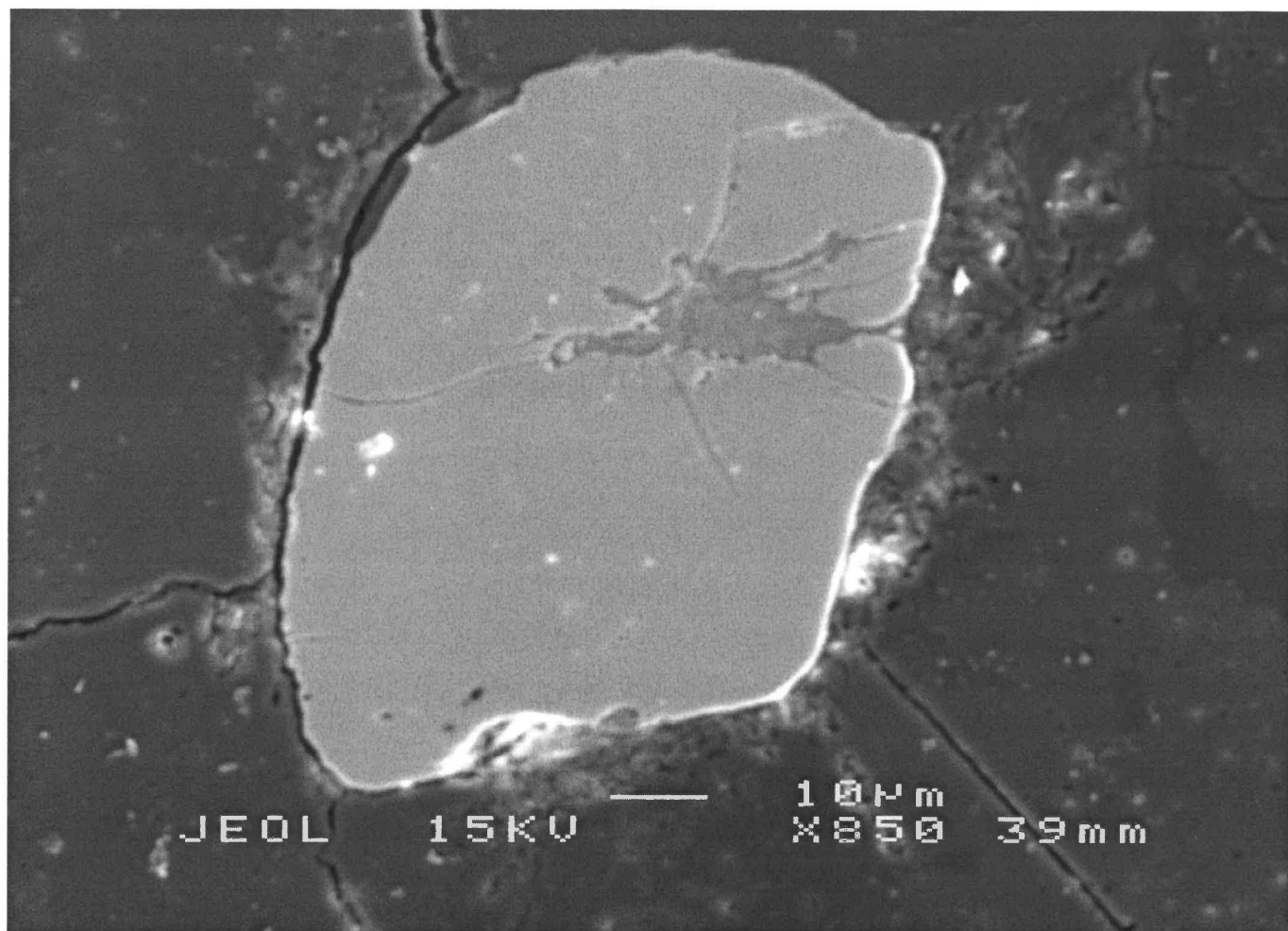
11s

m2



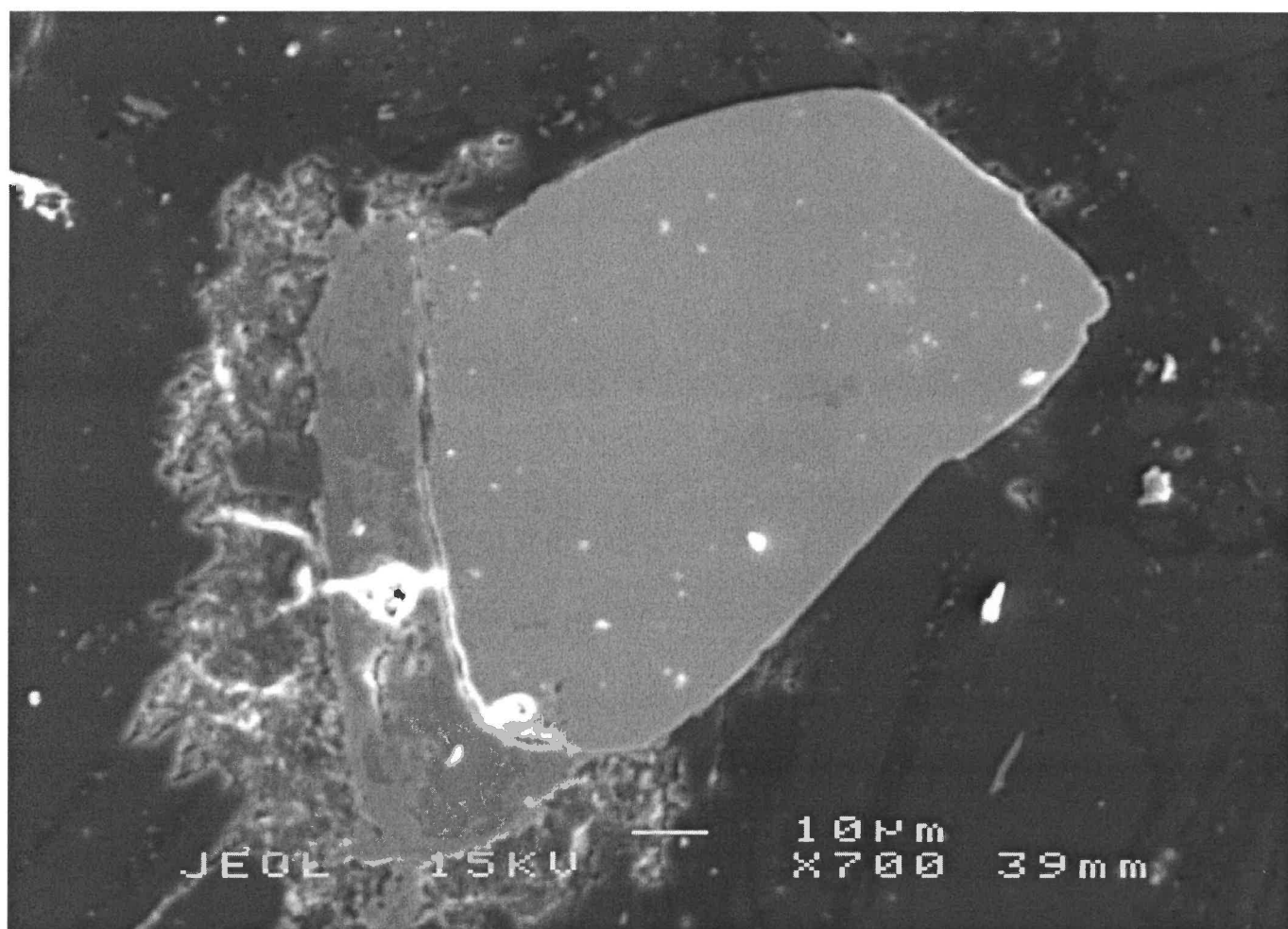
12s

NbSi
mineral



135

MZ



145

MZ