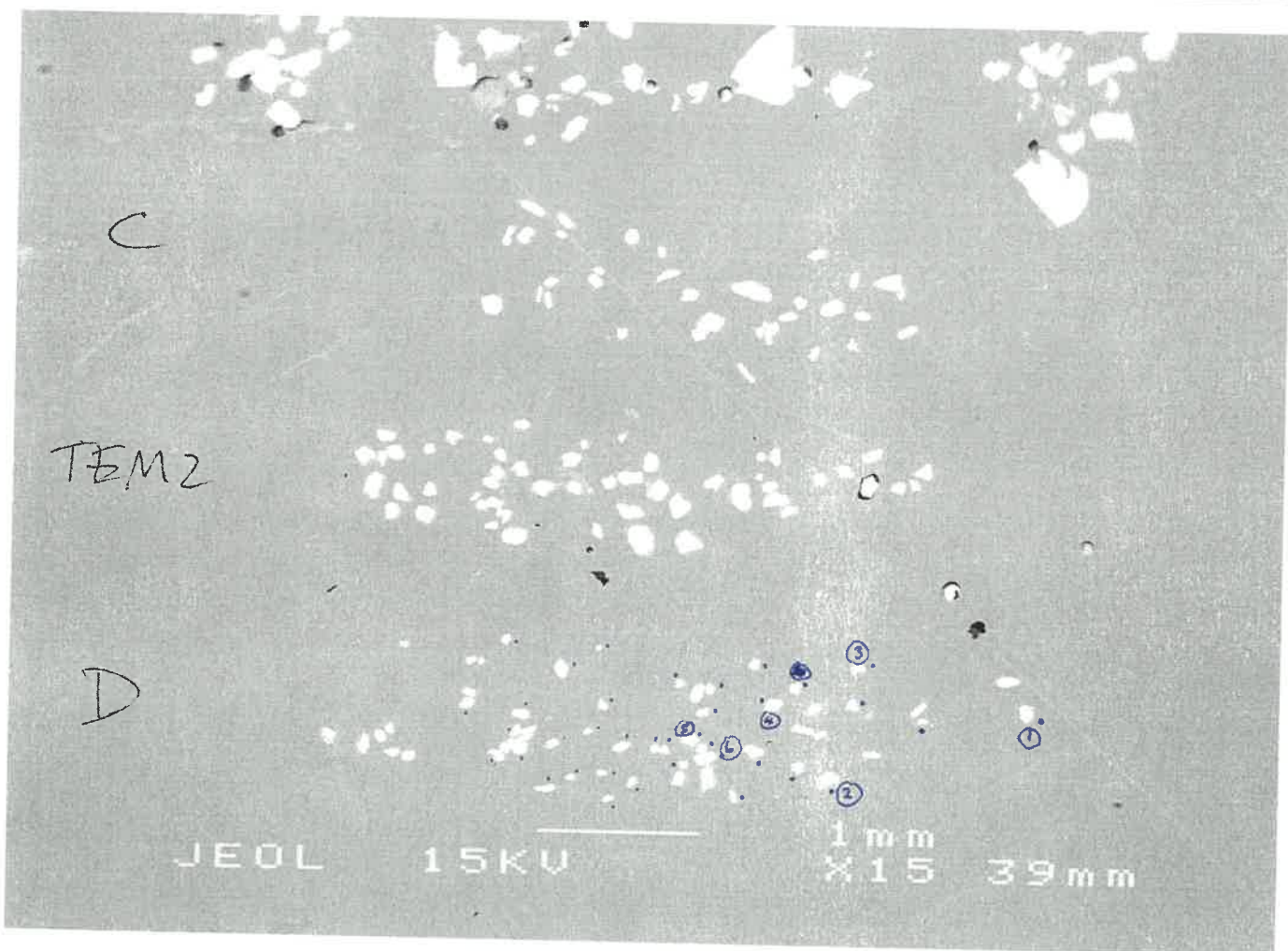
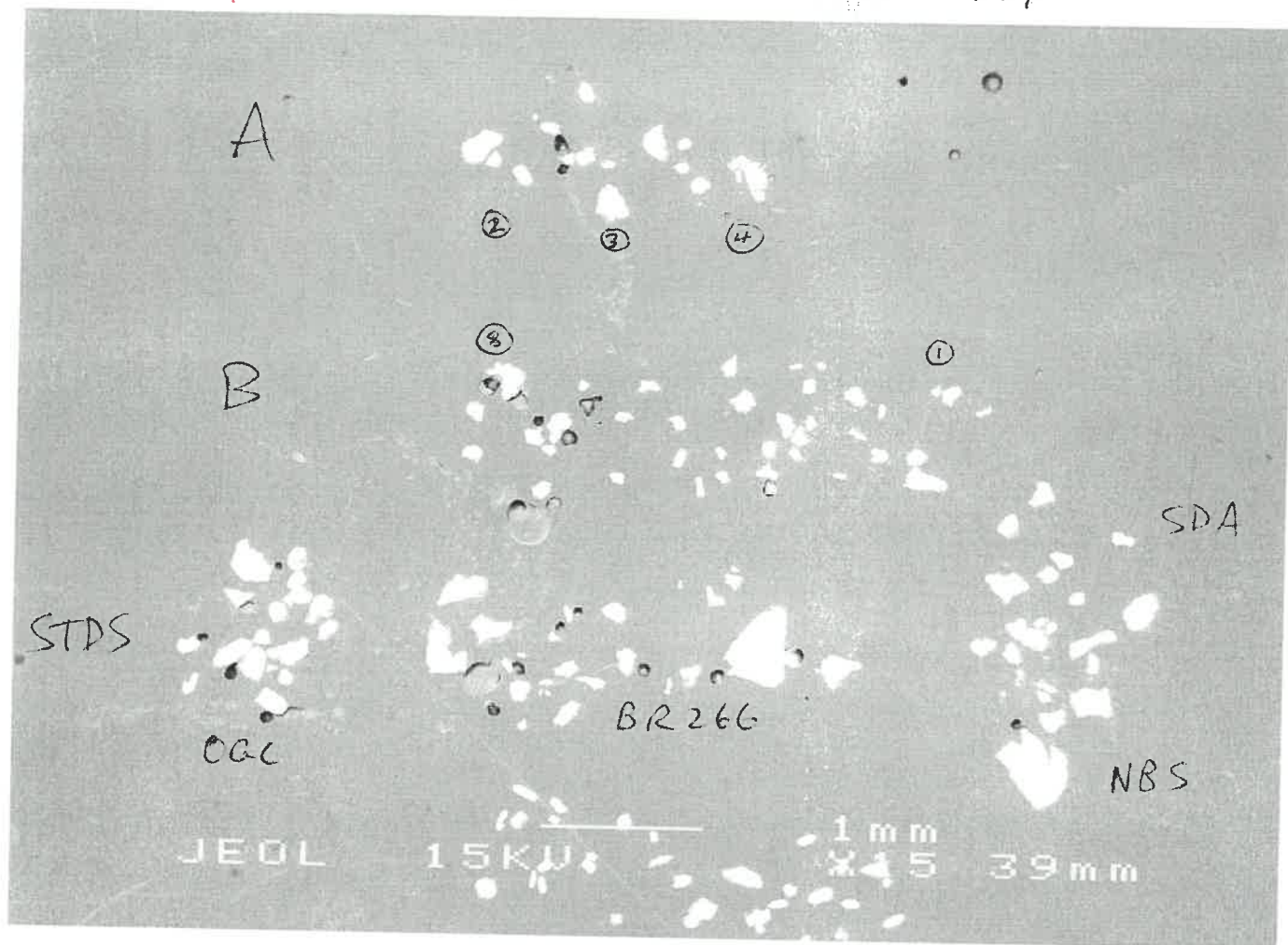


↑ 4/8/11

11-21

7/7/11



11-21

2/7/11

A →

B

OAC

BR266

SDA

NBS611

C

TEM2

D

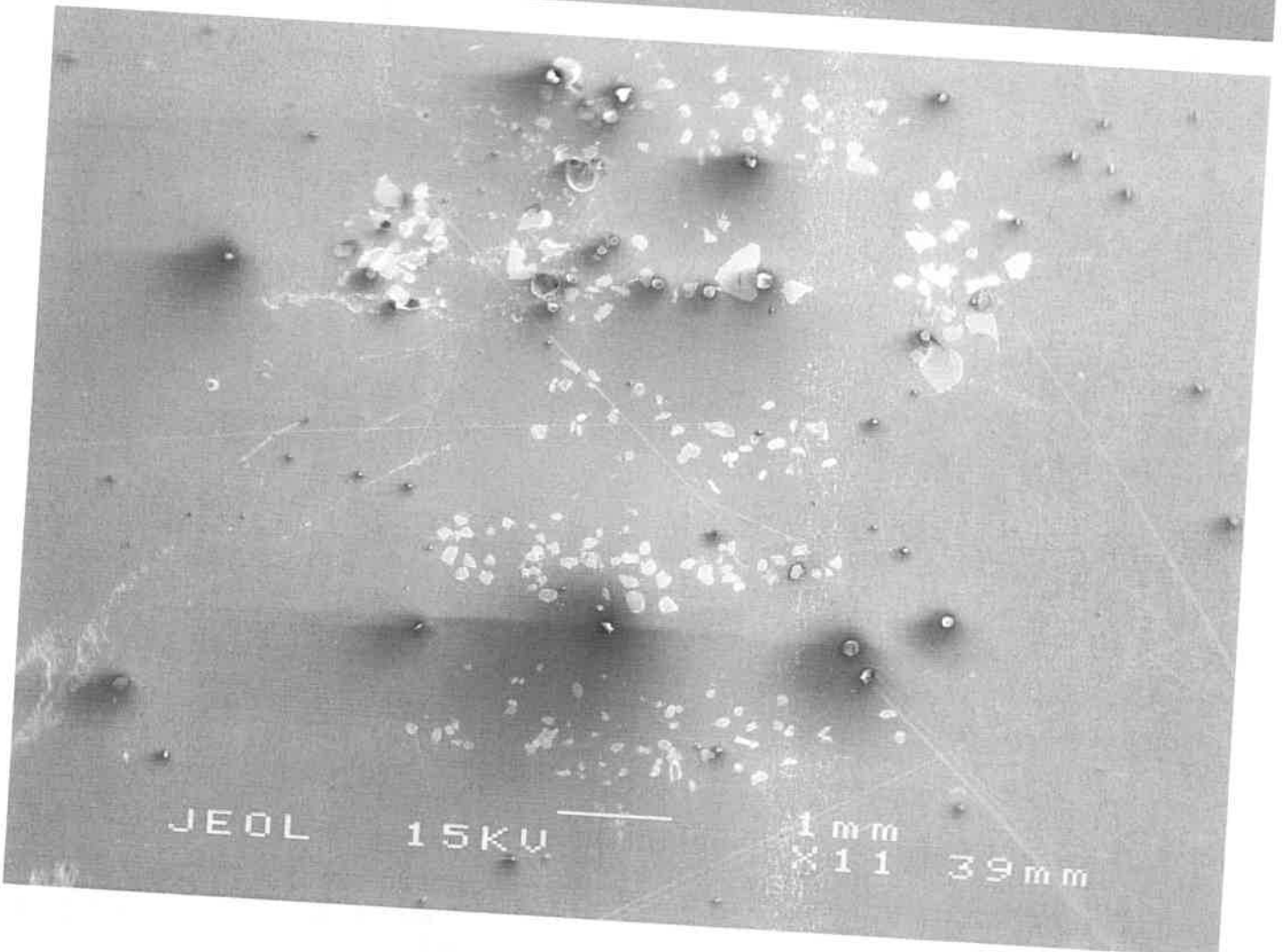
JEOL

15KV

1mm

X11

39mm



JEOL

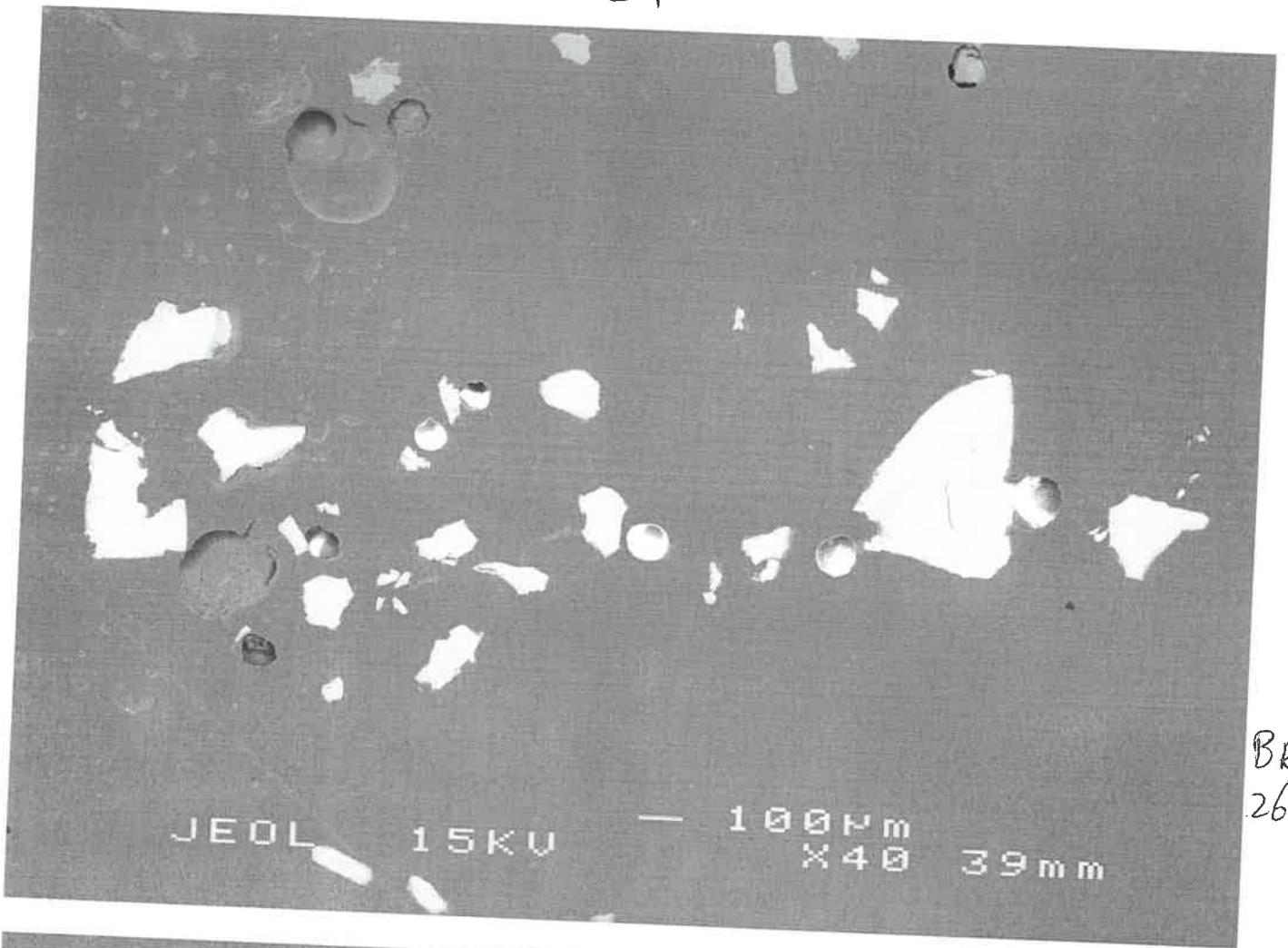
15KV

1mm

X11

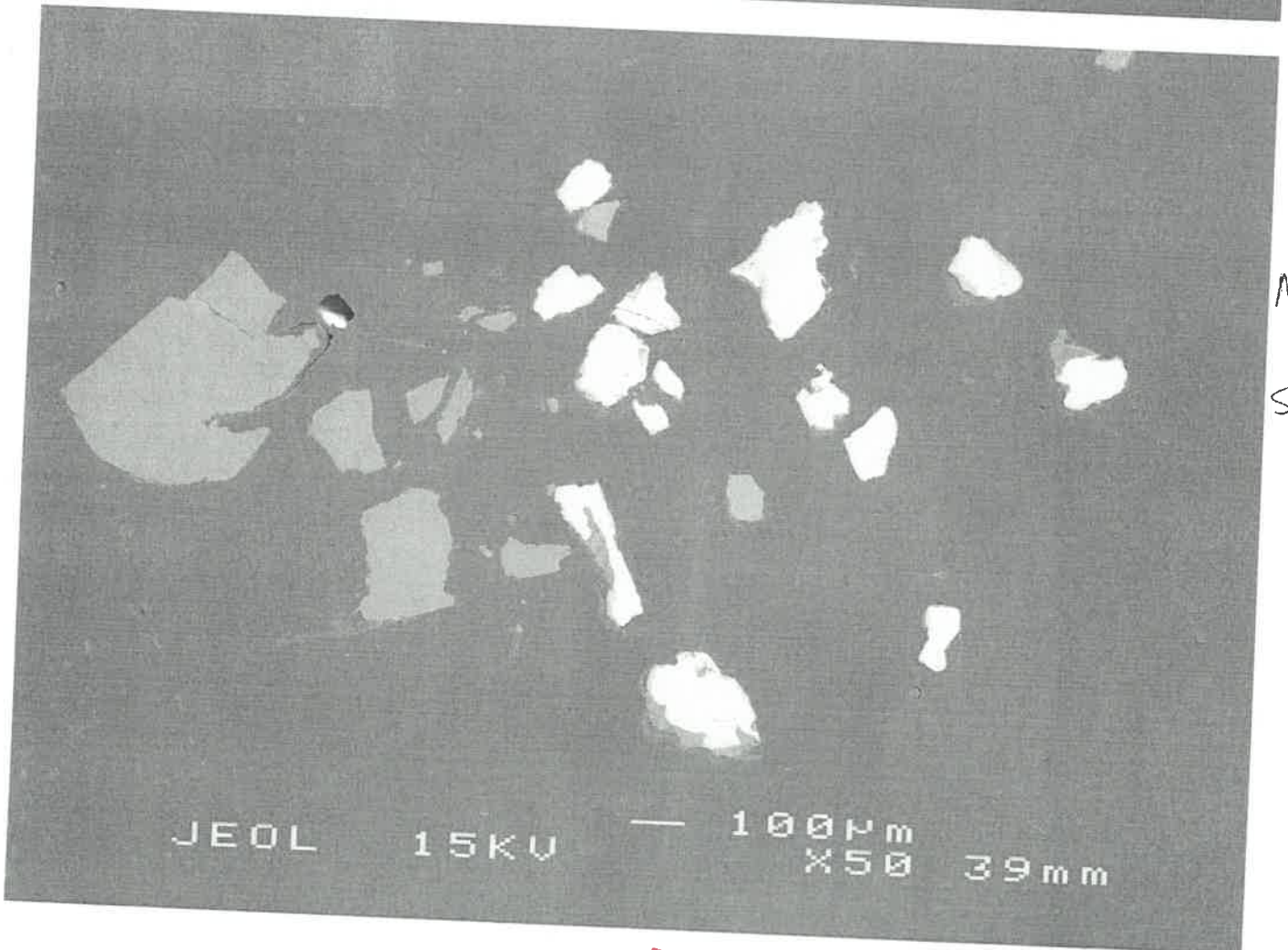
39mm

11-21



JEOL 15KV — 100µm X40 39mm

BR  
266



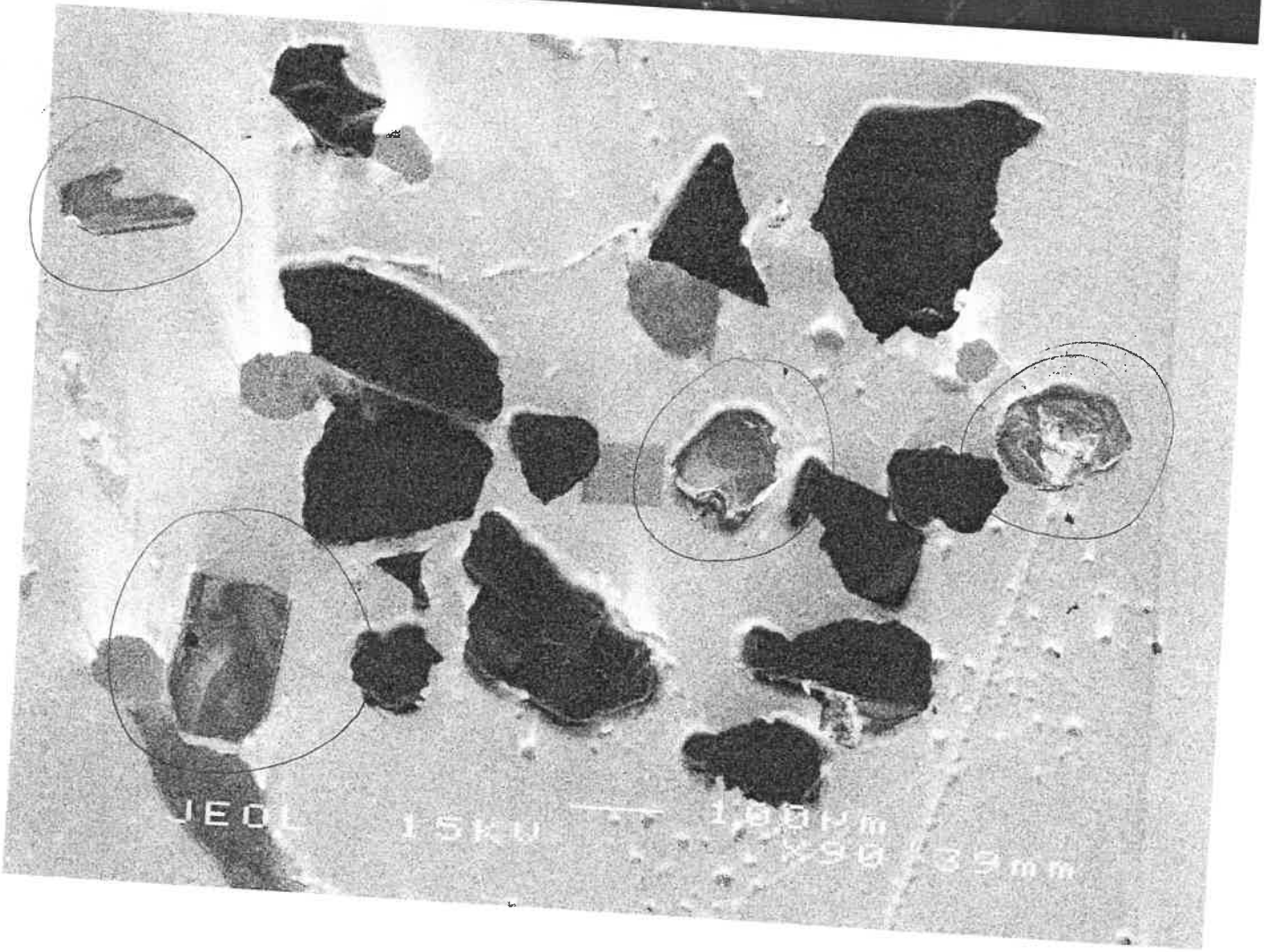
JEOL 15KV — 100µm X50 39mm

NBS  
+  
SDA

4/8/11  
↙

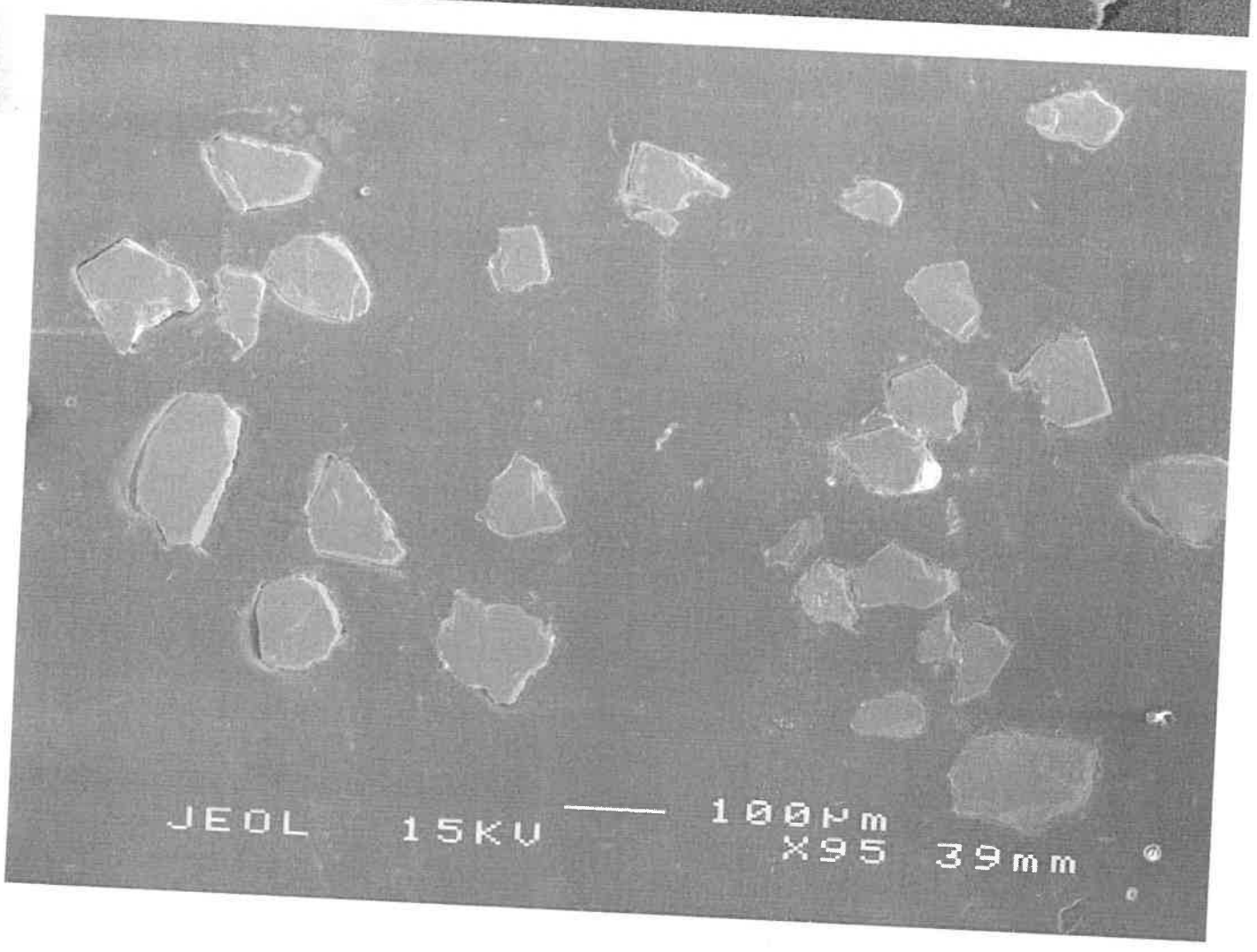
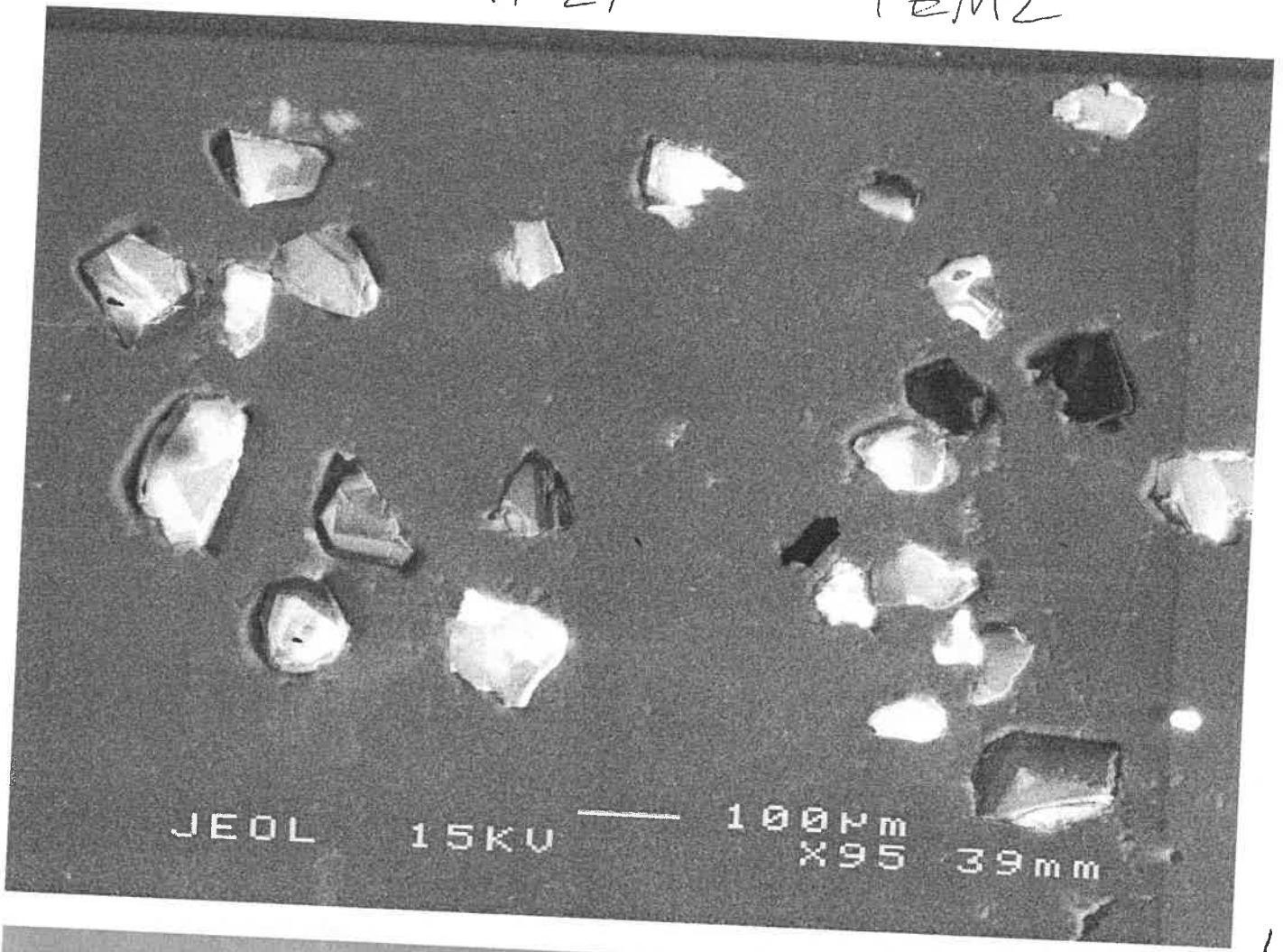
11-21

Oac-1



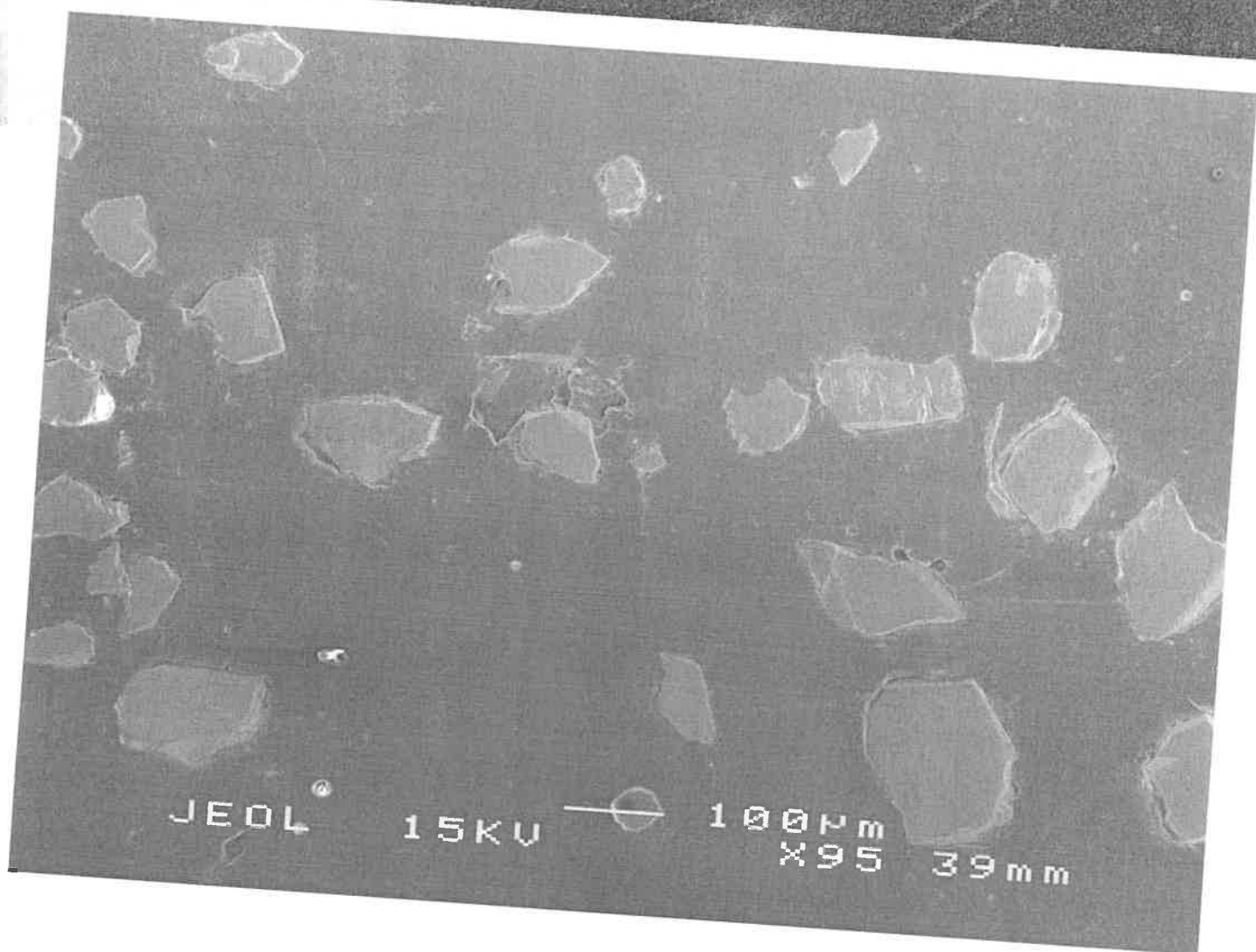
11-21

TEM2



11-21

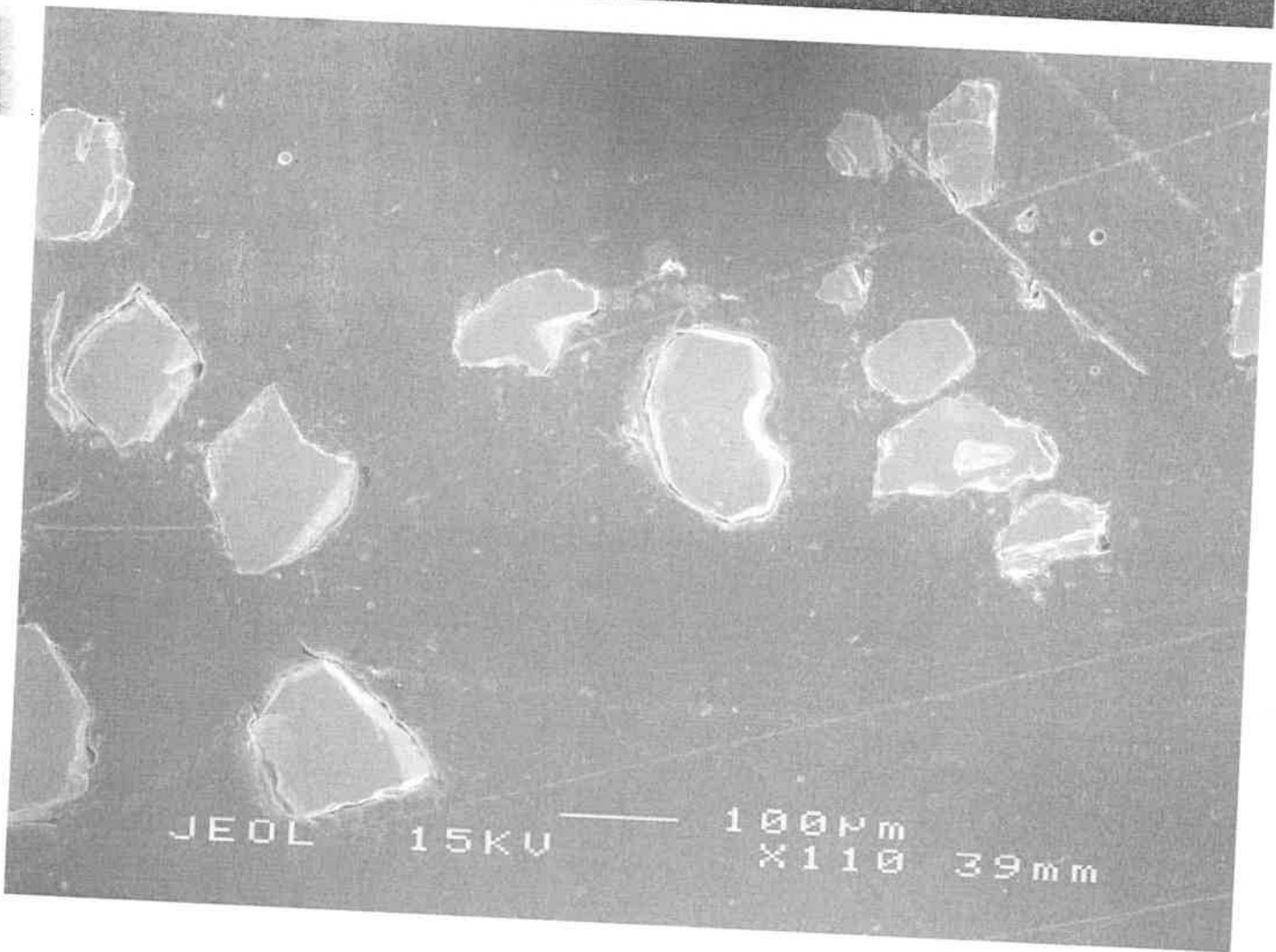
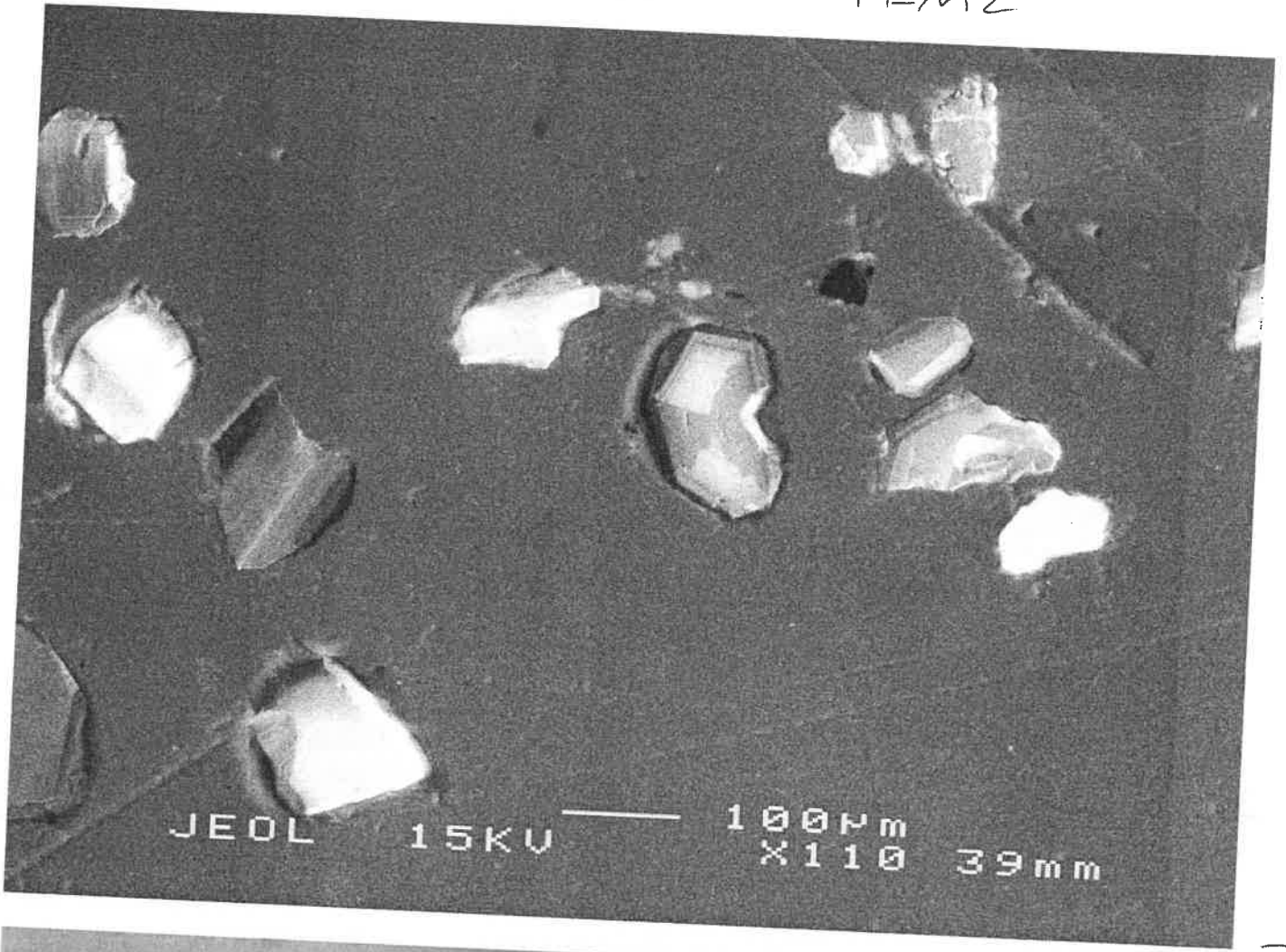
TEM2



2

11-21

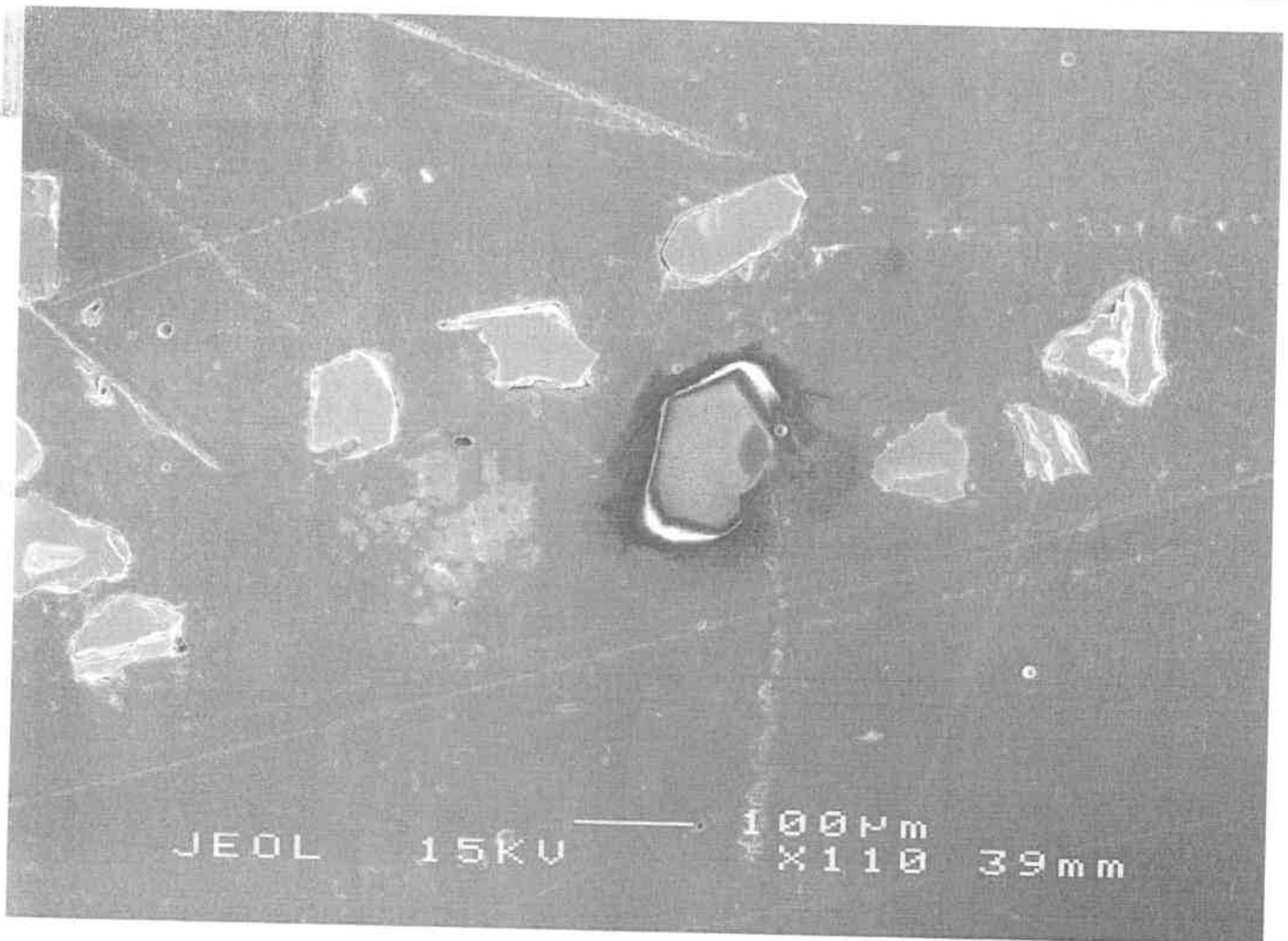
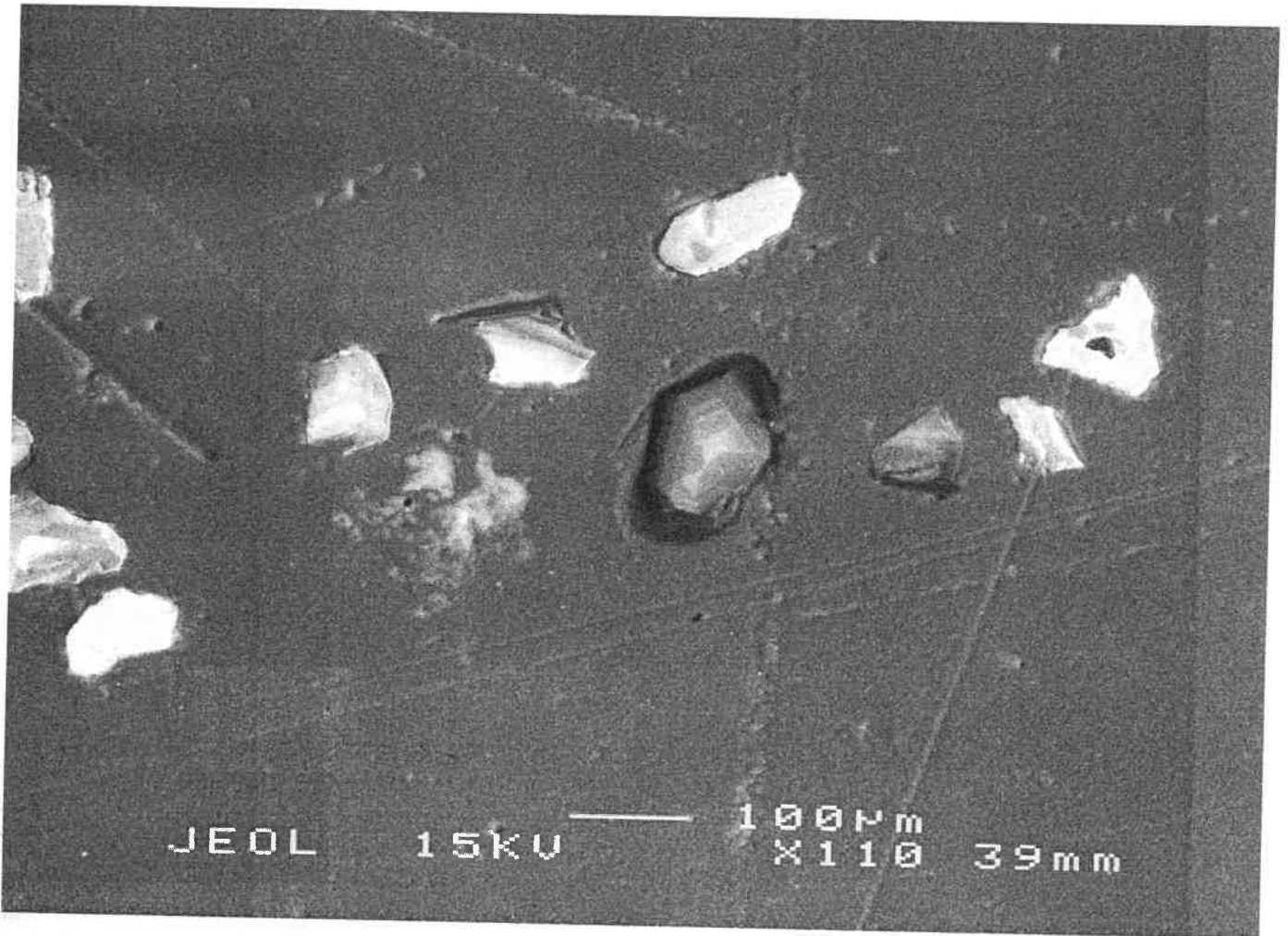
TEM2



3

11-21

TEM2



4