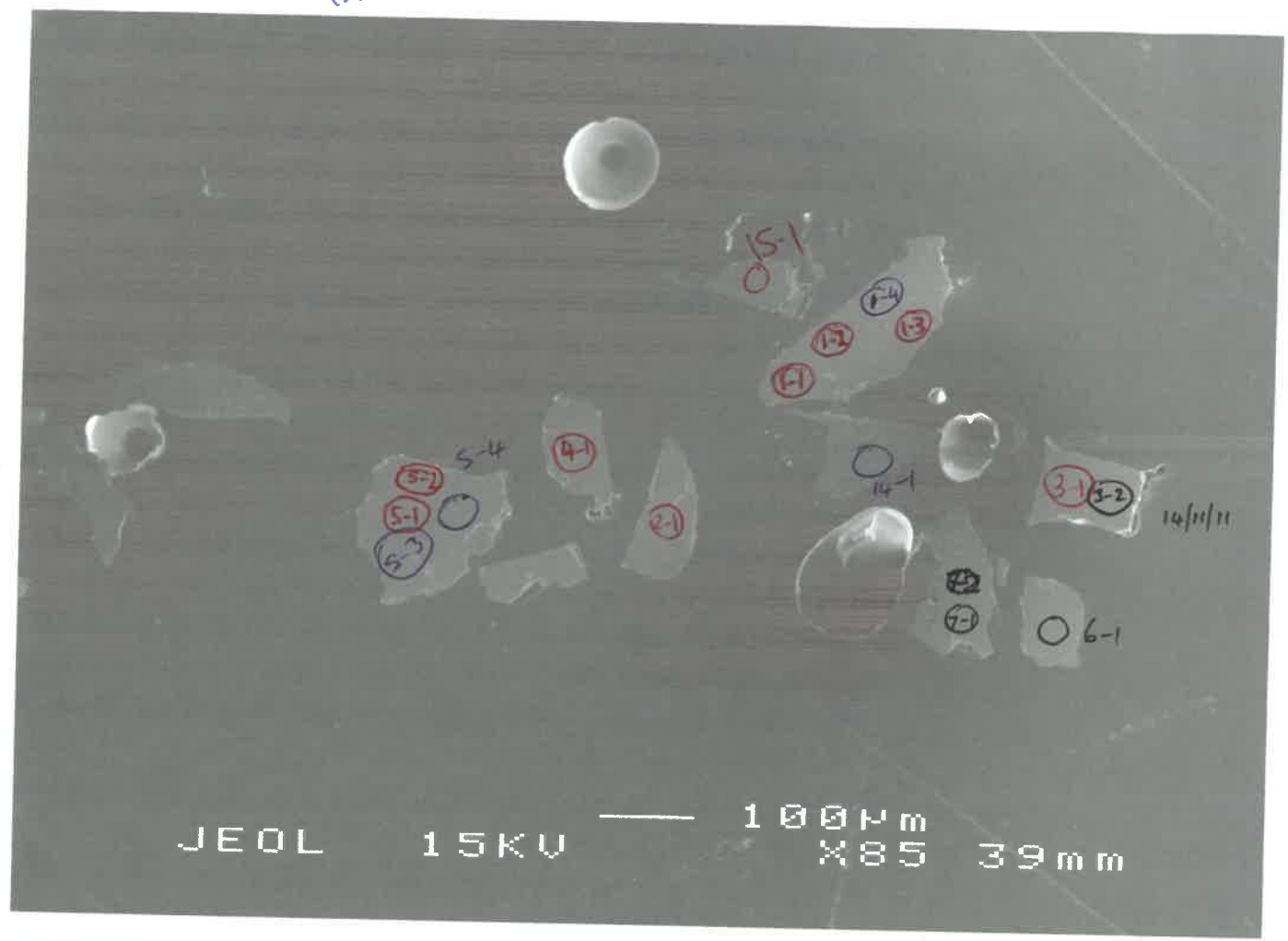


↑ 15/10/12

11-30

KHAN

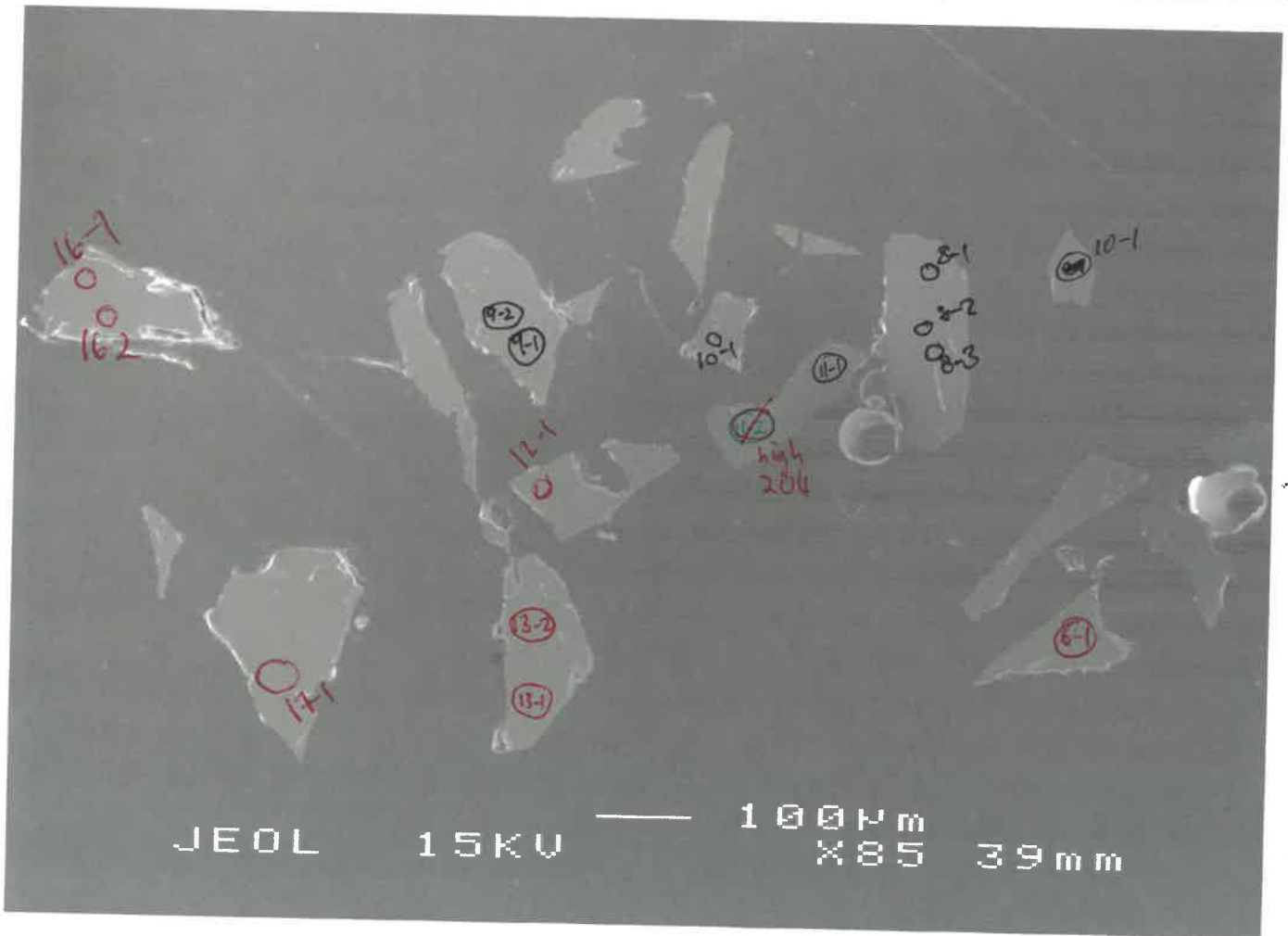
② ↙



1

2

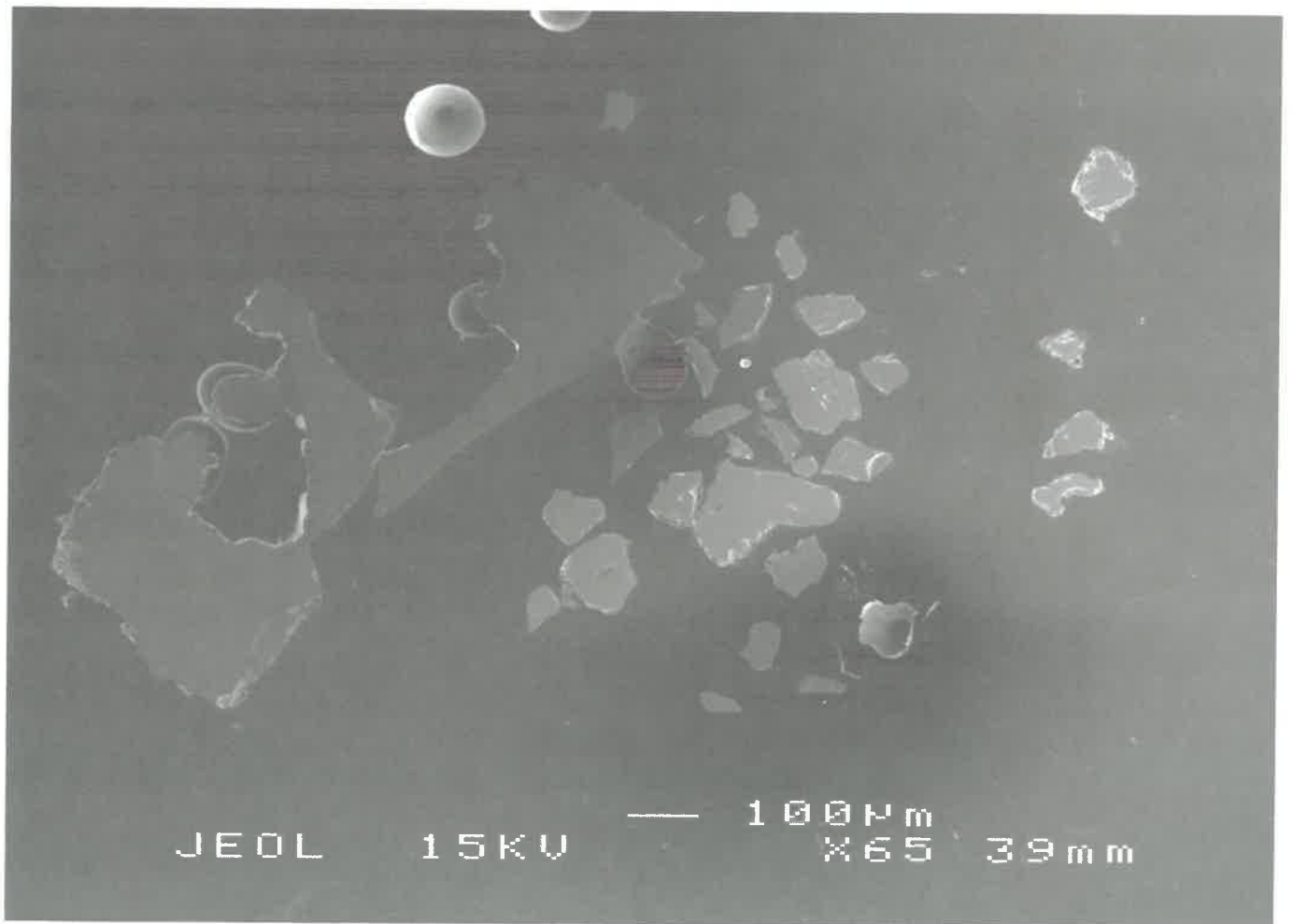
→ ①



JEOL 15KV 100 μm X85 39mm

11-30

NBS611 + SDA



11-30 ORBA

01-11
 01-12
 01-12
 01-6
 01-4
 1-3
 14/11/11
 1-1
 2-1
 1-5
 1-8
 1-9

JEOL 15KV — 100µm
 X60 39mm

15/10/12

Setups
 2-1 2-3
 2-1 2-3
 2-4

JEOL 15KV — 100µm
 X60 39mm