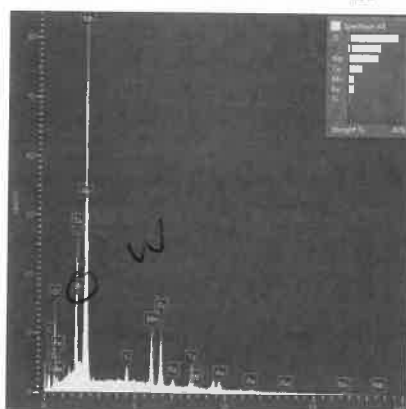
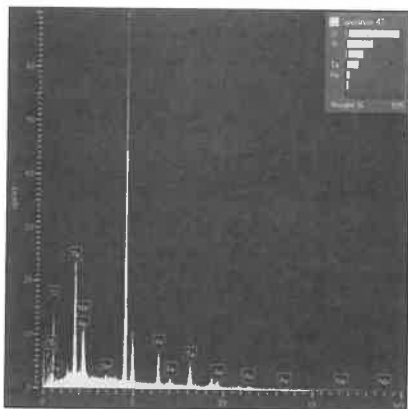
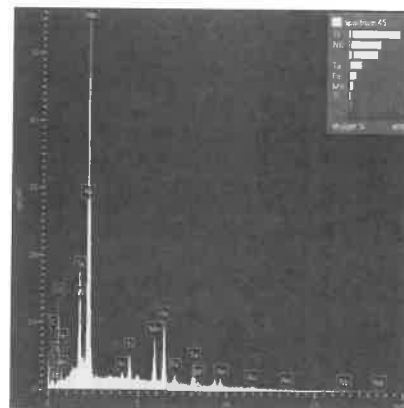
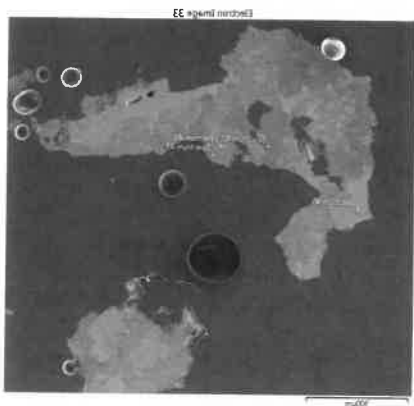
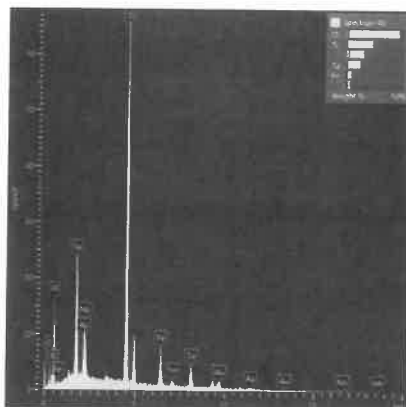
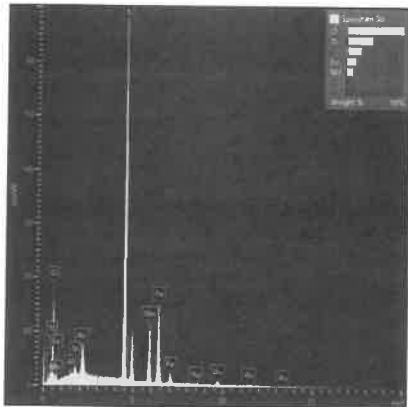
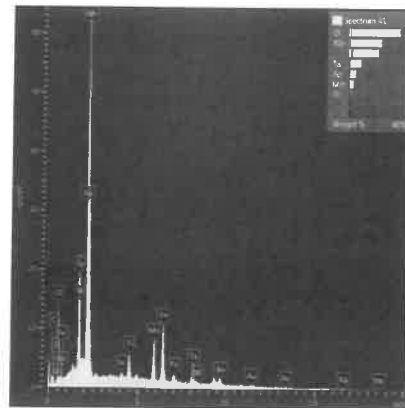
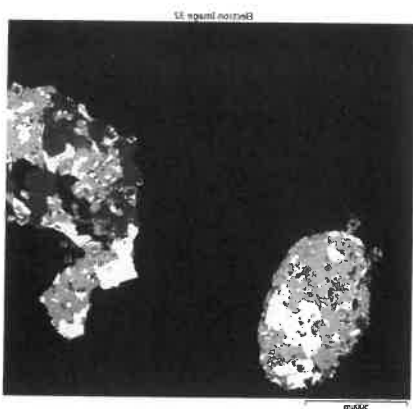
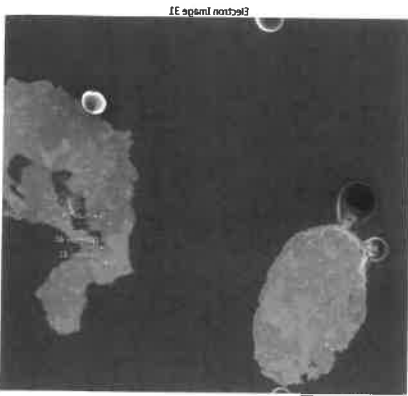


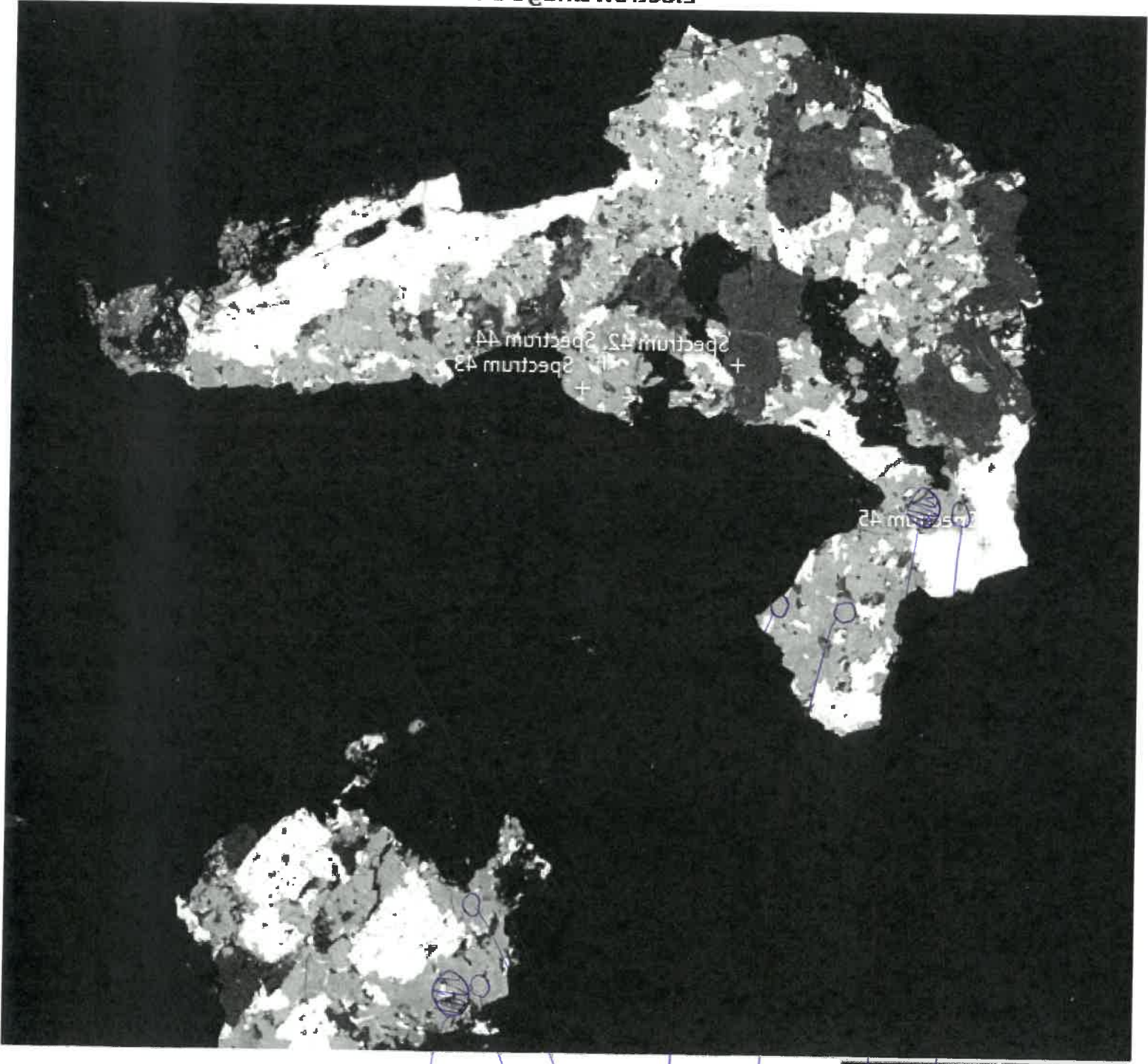
F



Ni6-36F

42 = silicate??
43 = rutile
44 = Ni-phase
45 = "

Electron Image 34



2/11/17



Ni6-36F

for 2/11/17
CASE 1046

2-1-16

2-2

1-1

1-2

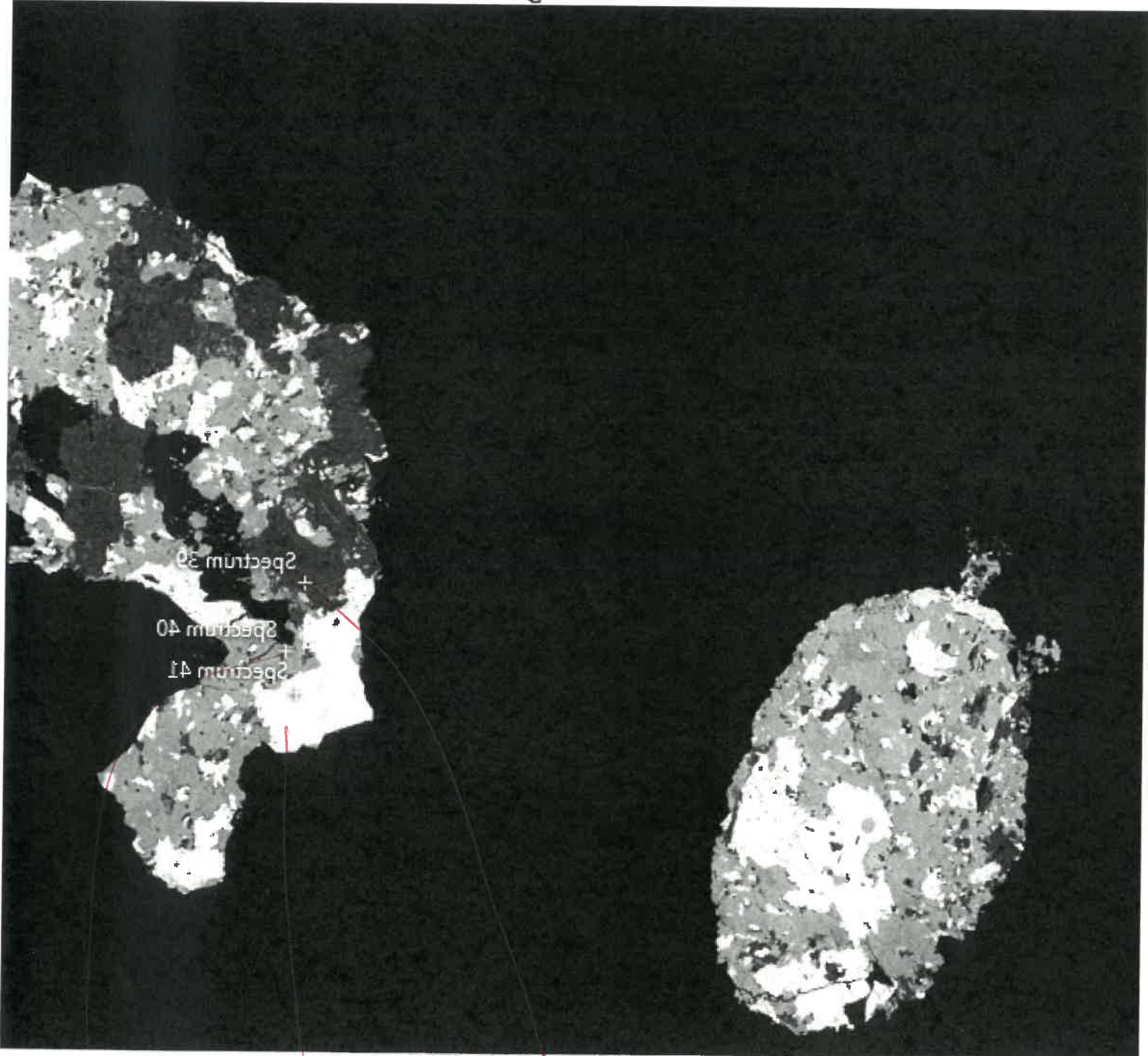
Case 1046
for 2/11/17

1-3

200nm

N16-36F

Electron Image 32



200µm

Rutile

Nb-phase

Mg-Fe-Si?