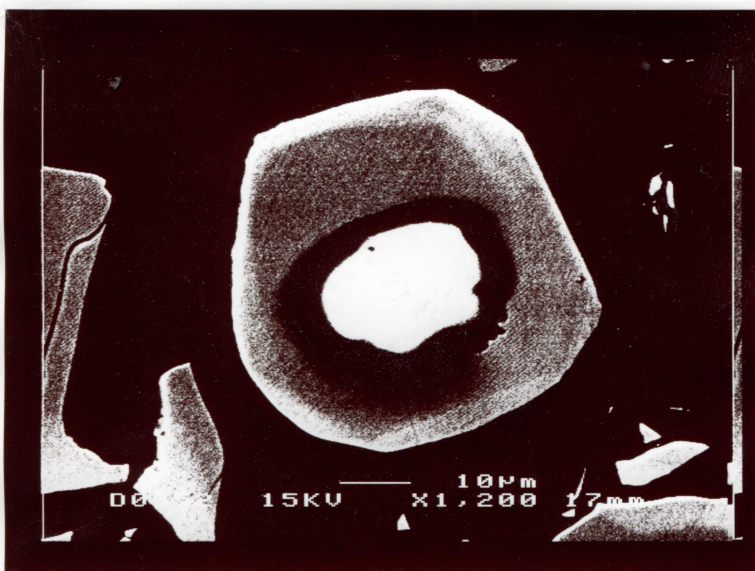
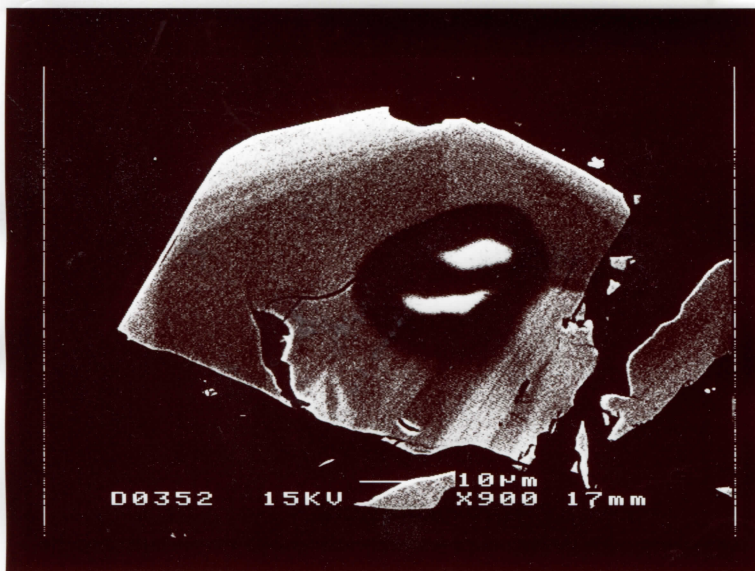
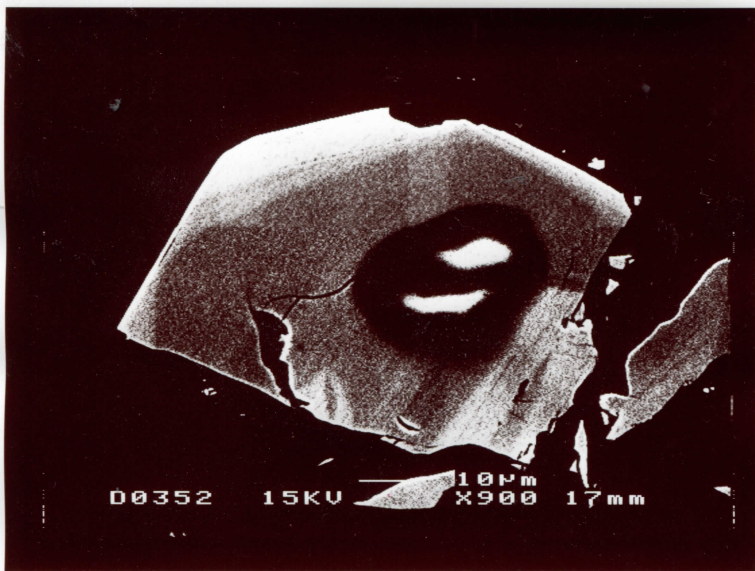
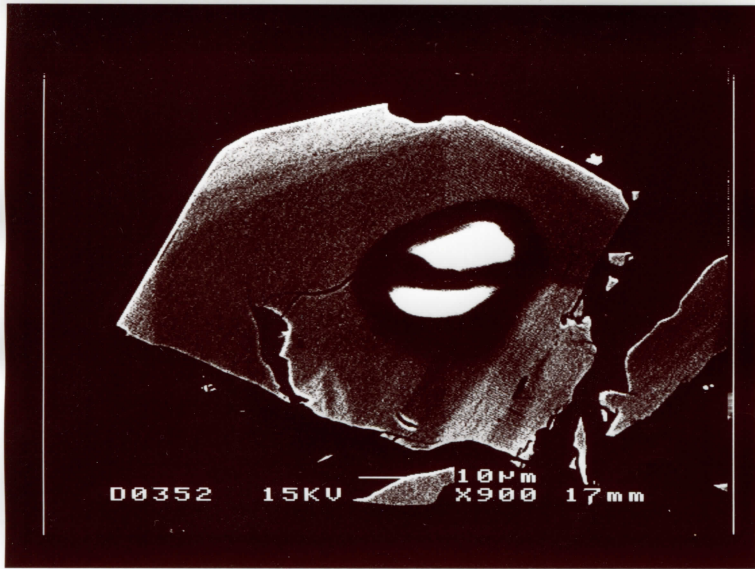
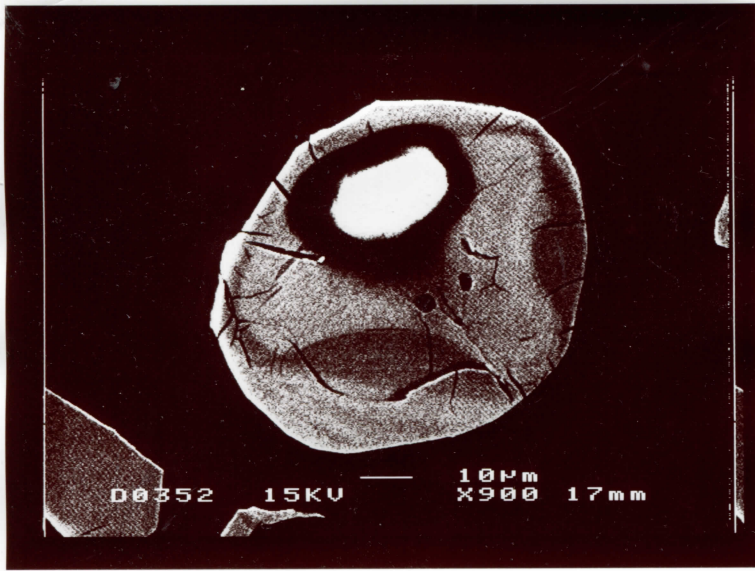
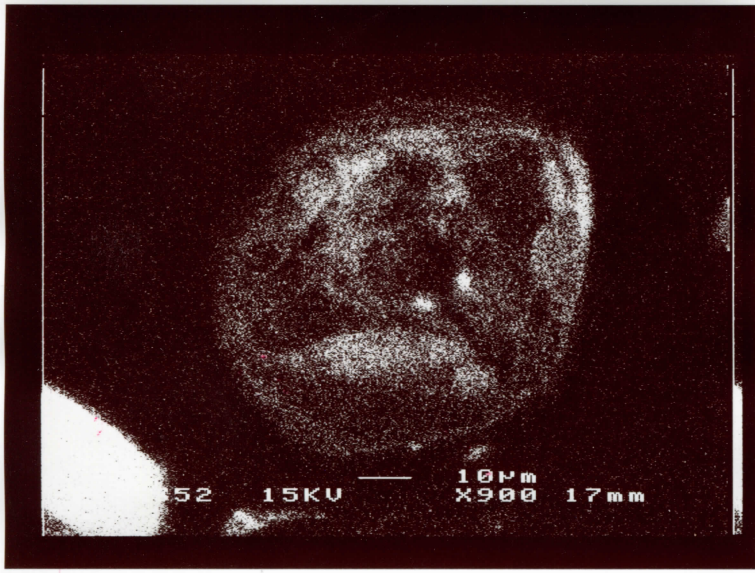


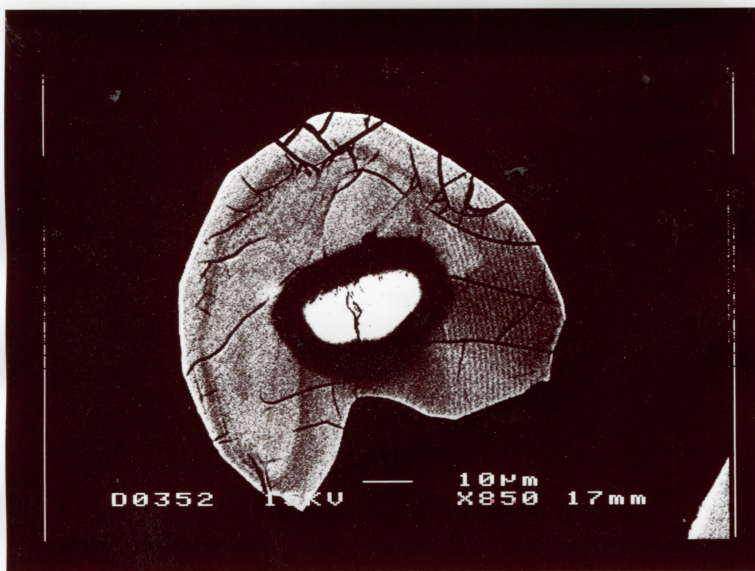
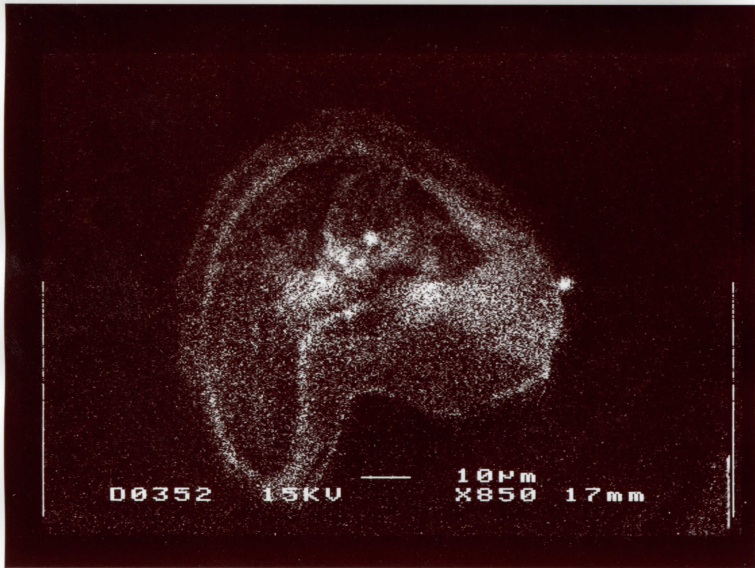
*Handwritten notes in red ink, possibly identifying the sample or providing experimental details.*



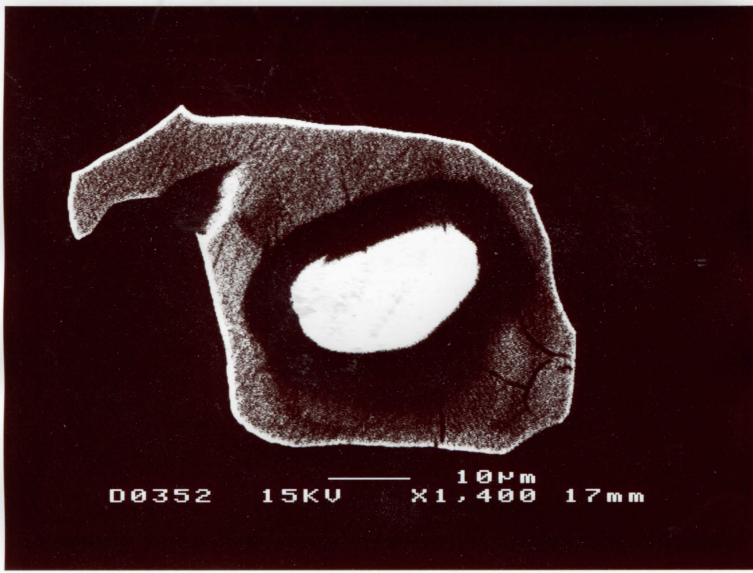
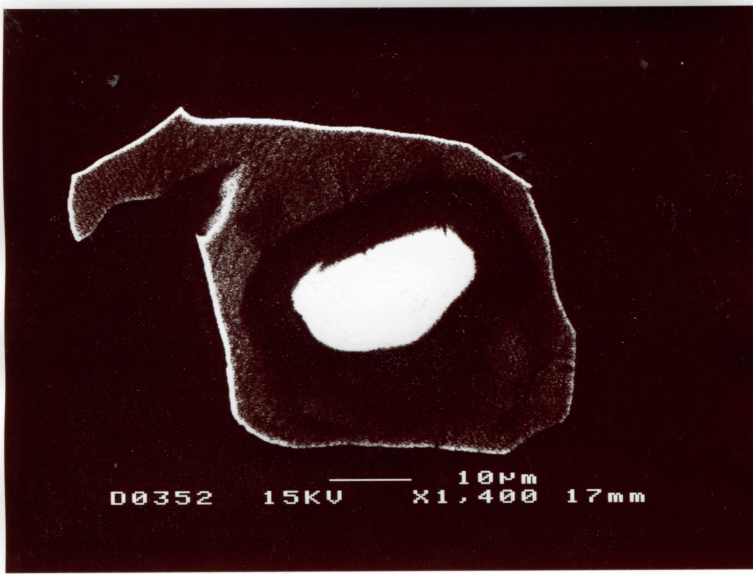
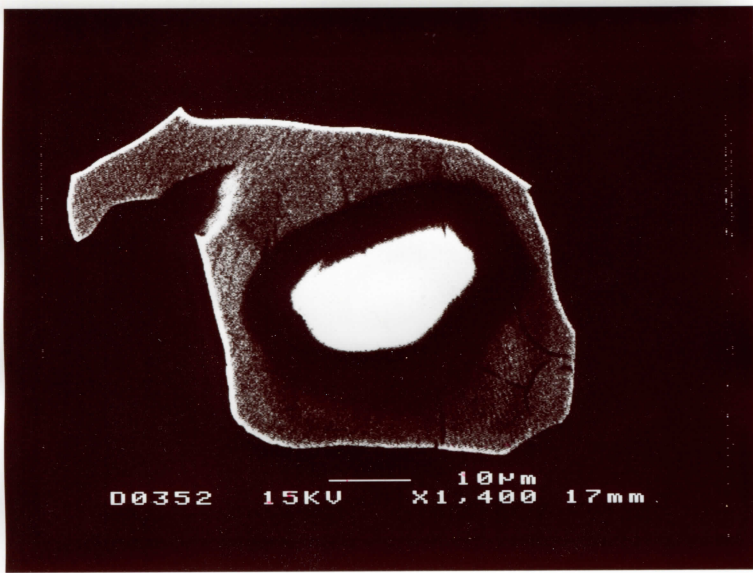
*Handwritten notes in red ink, similar to the ones above the first image.*

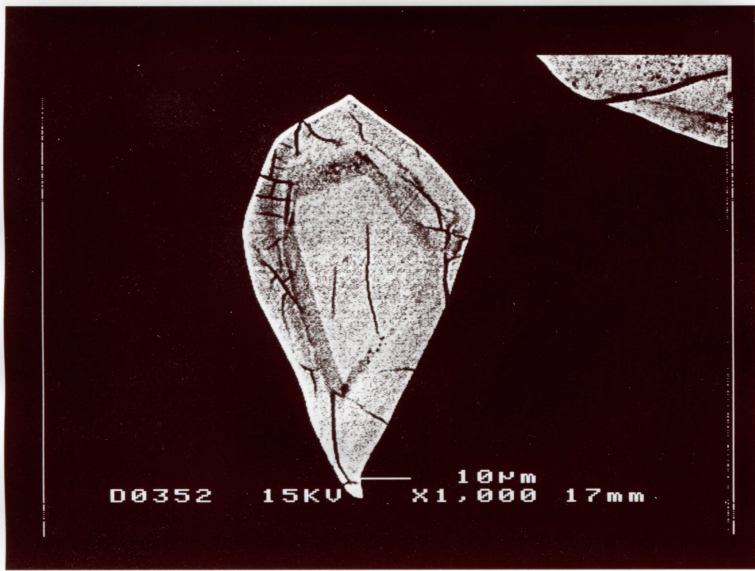




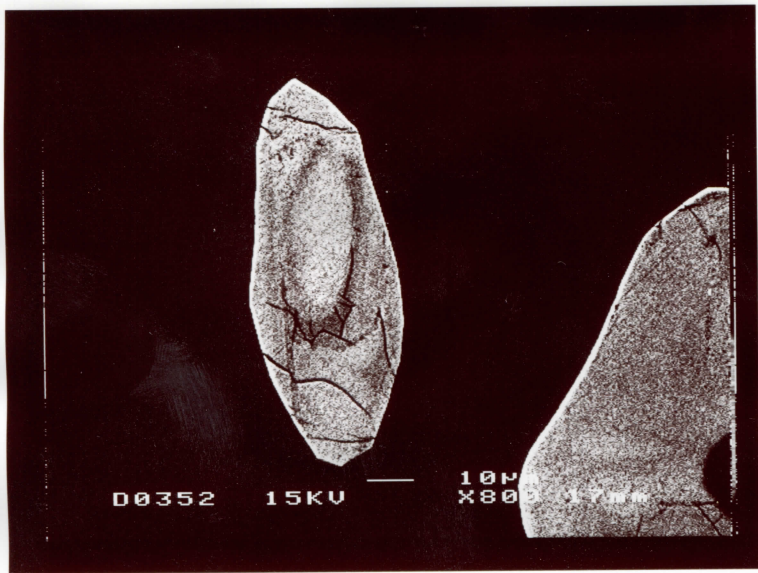






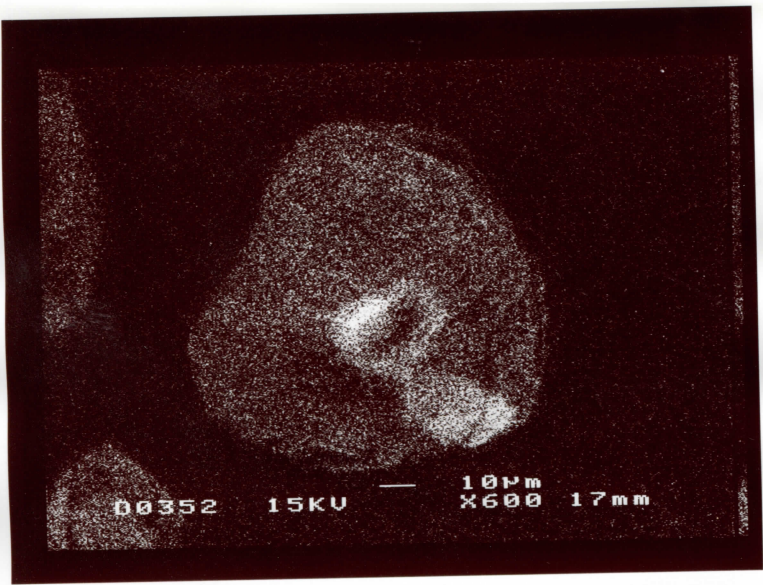


*[Faint, illegible handwritten text]*

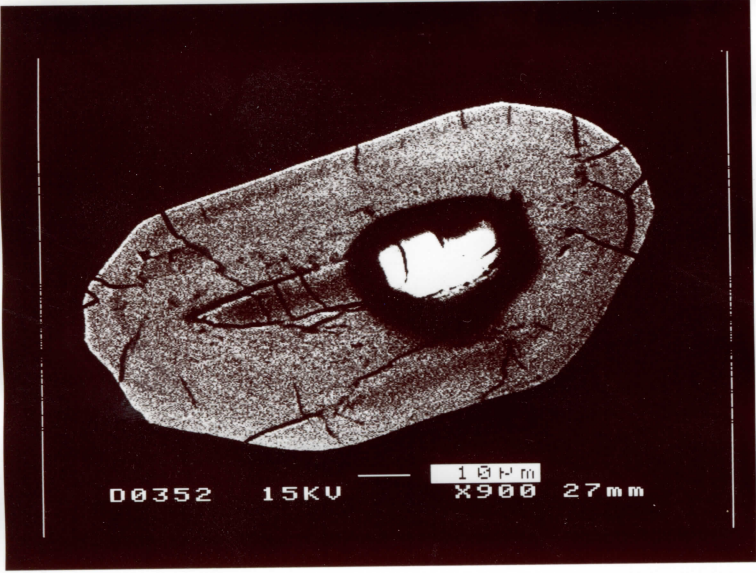


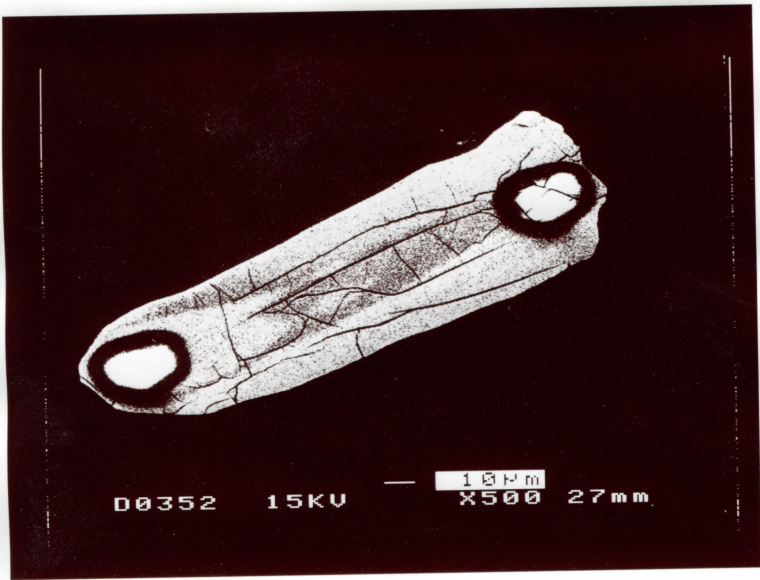
*[Faint, illegible handwritten text in red ink]*



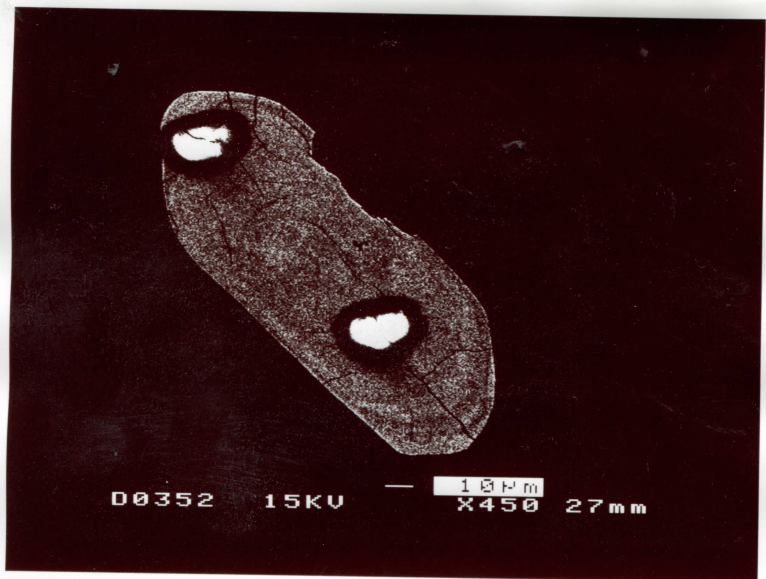


00352 15KV 10µm X600 17mm

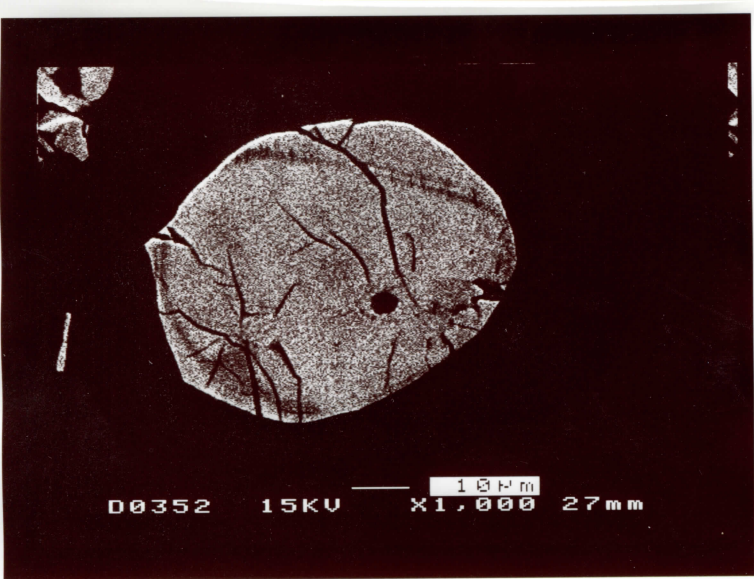




Handwritten red text, possibly a specimen number or date, is visible on the white border below the first micrograph.



Handwritten red text, similar to the one above, is visible on the white border below the second micrograph.



00352 15KV — 10µm X1,000 27mm

*[Faint red handwritten markings]*

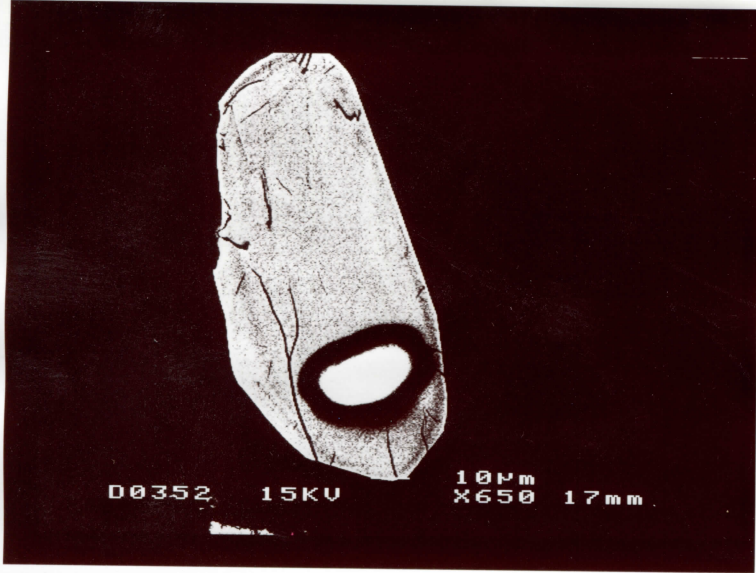


00352 15KV — 10µm  
X1,000 17mm



00352 15KV — 10µm  
X1,000 17mm

*[Faint red handwritten text, possibly a date or sample ID]*

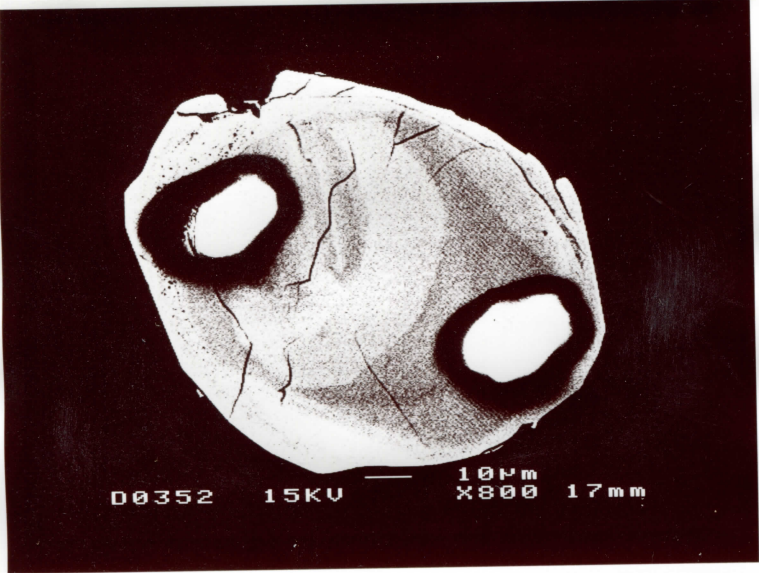


D0352

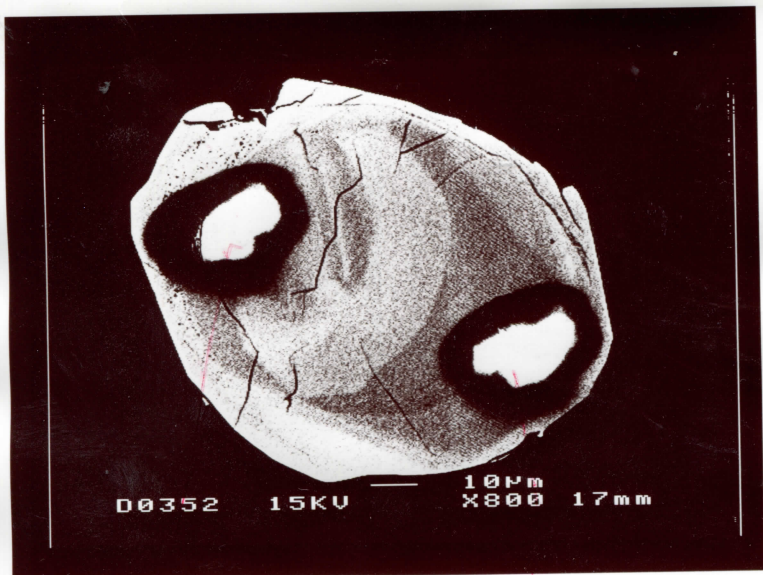
15KV

10µm

X650 17mm

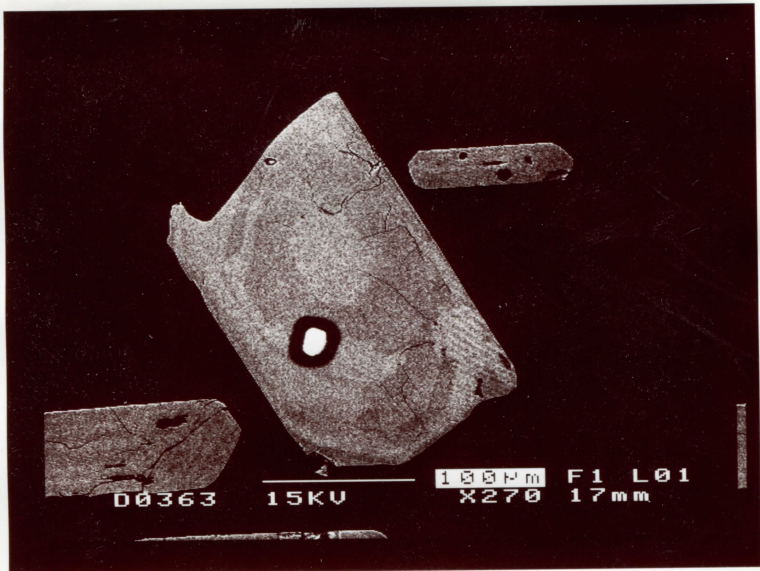


*Handwritten red notes:*  
2626 ± 1.42



*Handwritten red notes:*  
2626 ± 1.42





00363

15KV

100µm

F1 L01

X270 17mm