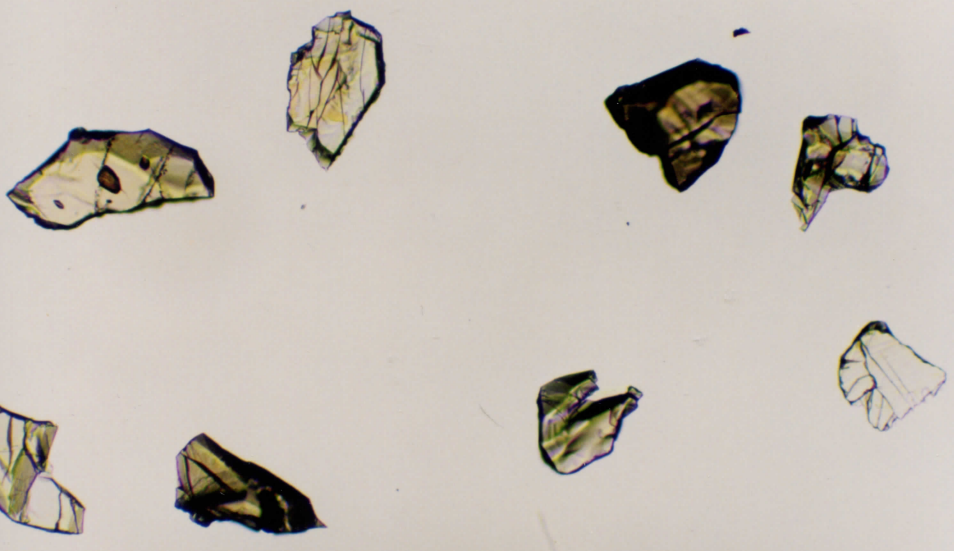
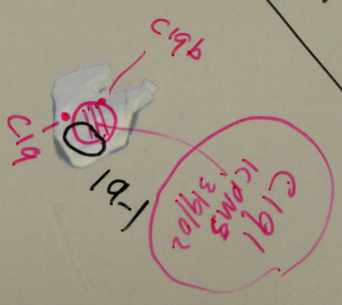
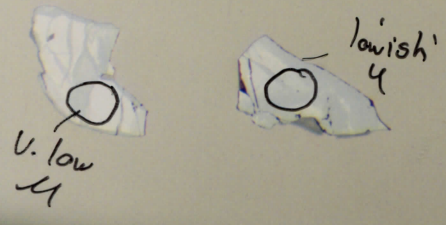
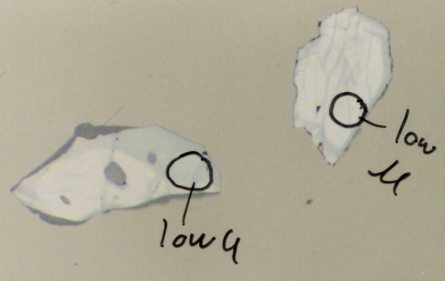


99-24C  
58







99-24C  
60

low 41

151  
ICPMS  
3/9/02

151  
C15a



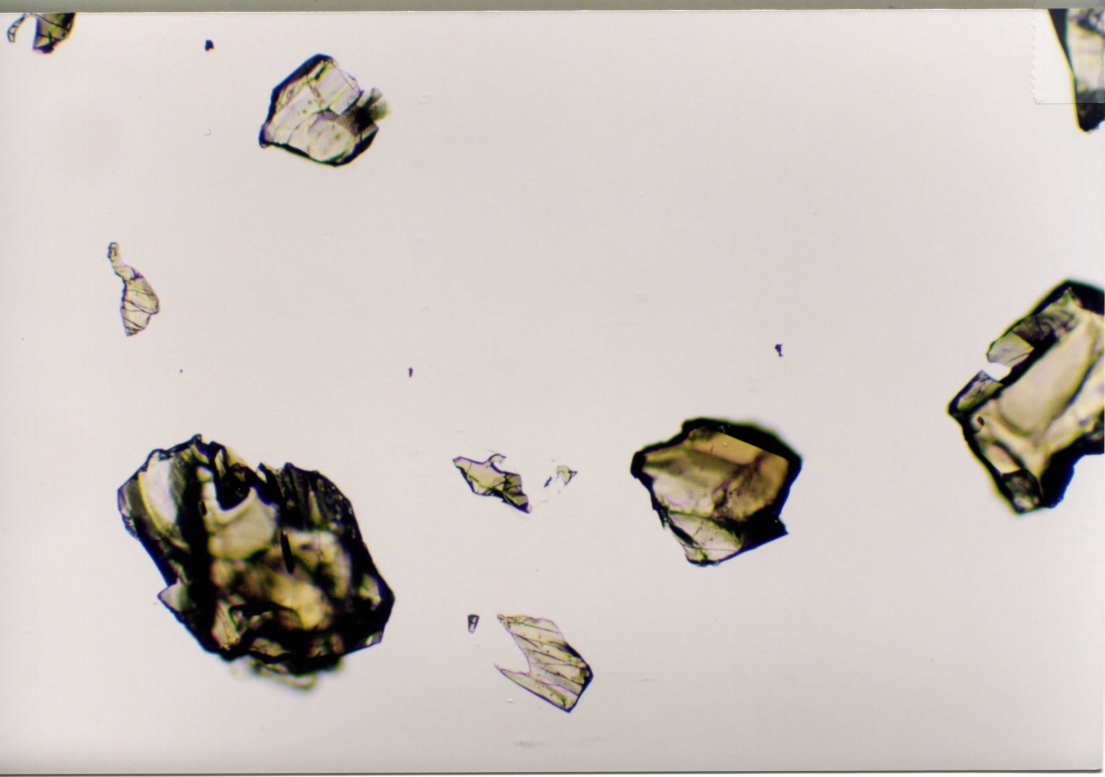
C15b

low 41

181  
C18b



C18a



99-246  
61

10-1

11-1

14-1  
10/15  
3/9/02

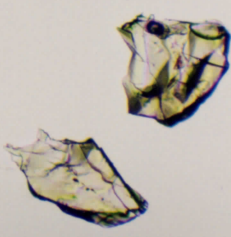
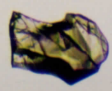
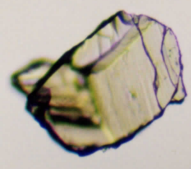
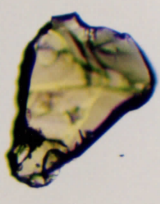
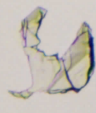
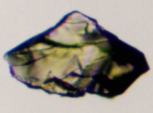
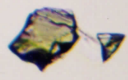
14-1

low 11

12-1  
c12a

13-1  
c13b

low 11  
c13a





99-246  
62

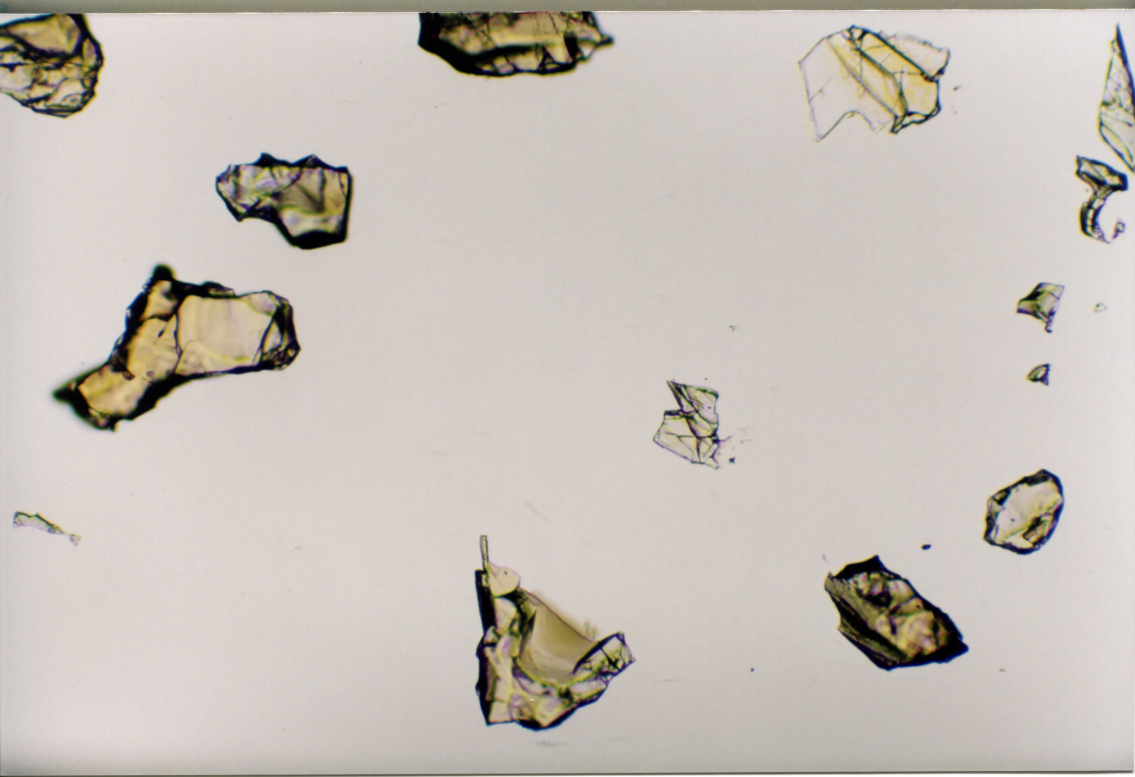
low  
u

9-1

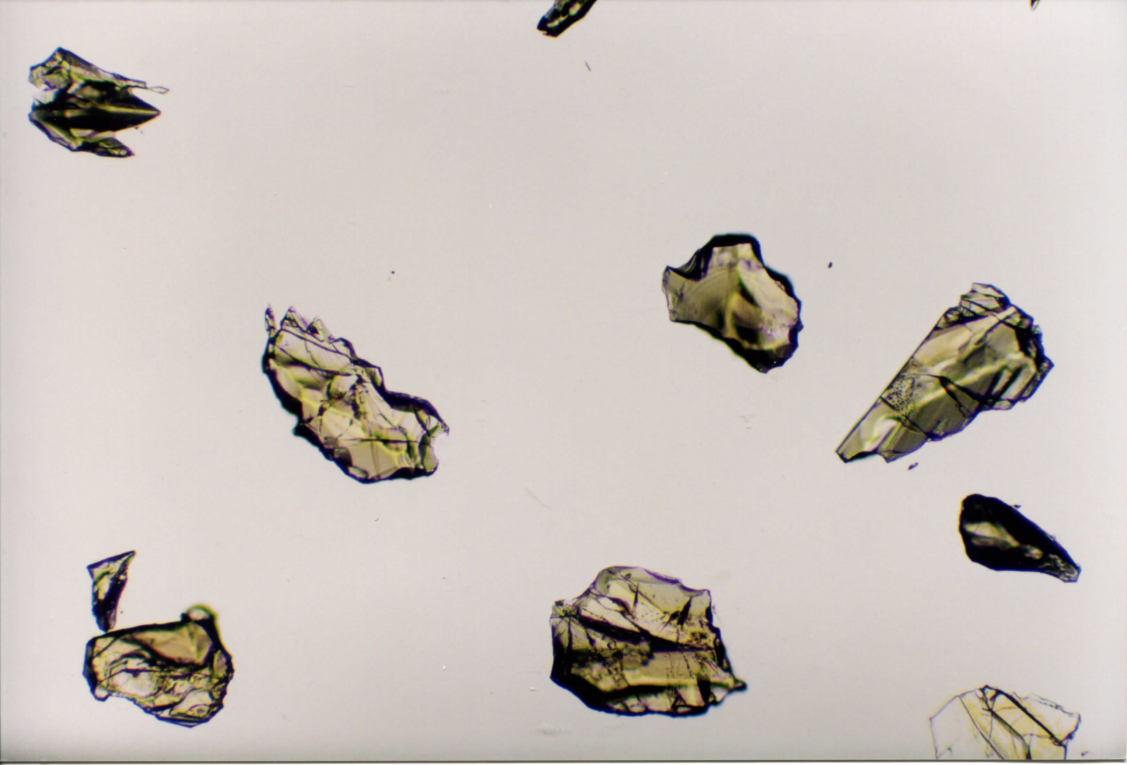
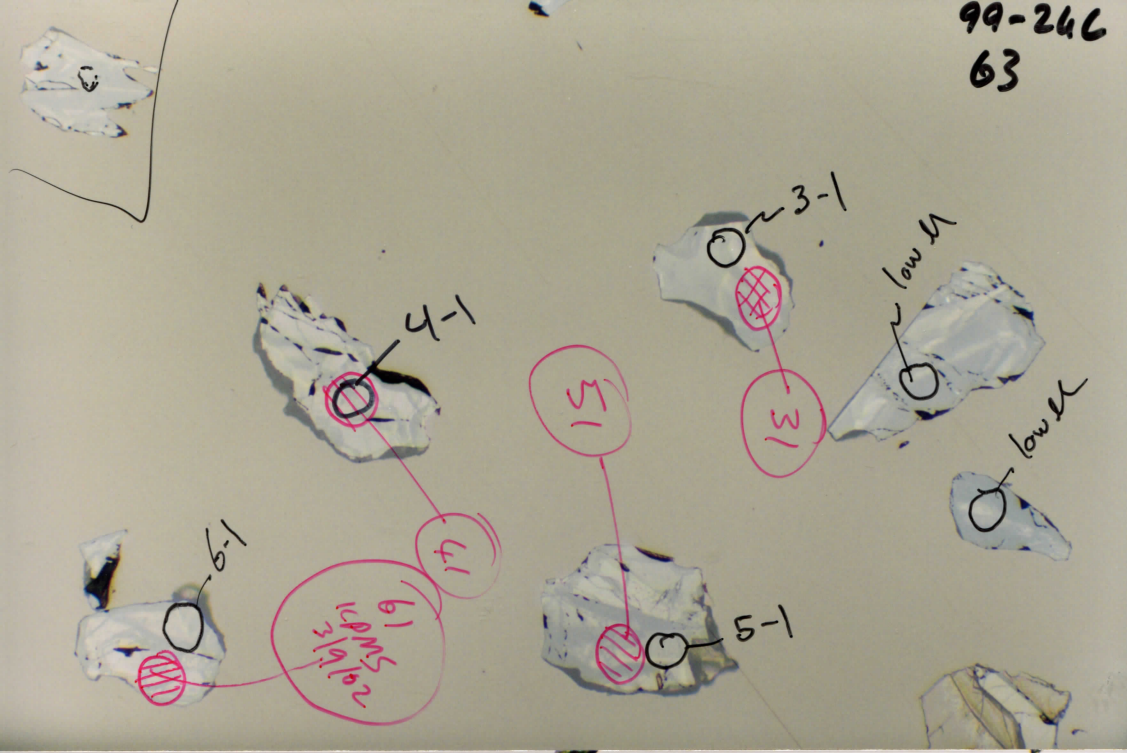
9-1

low  
u

8-1  
2-1  
20ms  
1c  
3/19/02

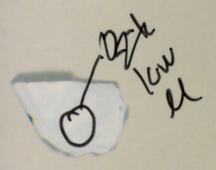
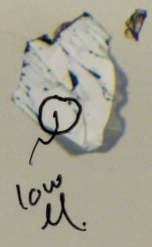
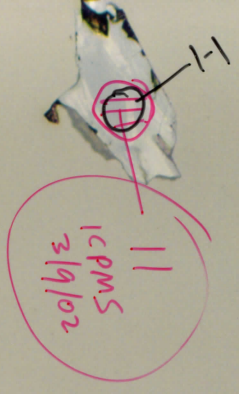


99-246  
63

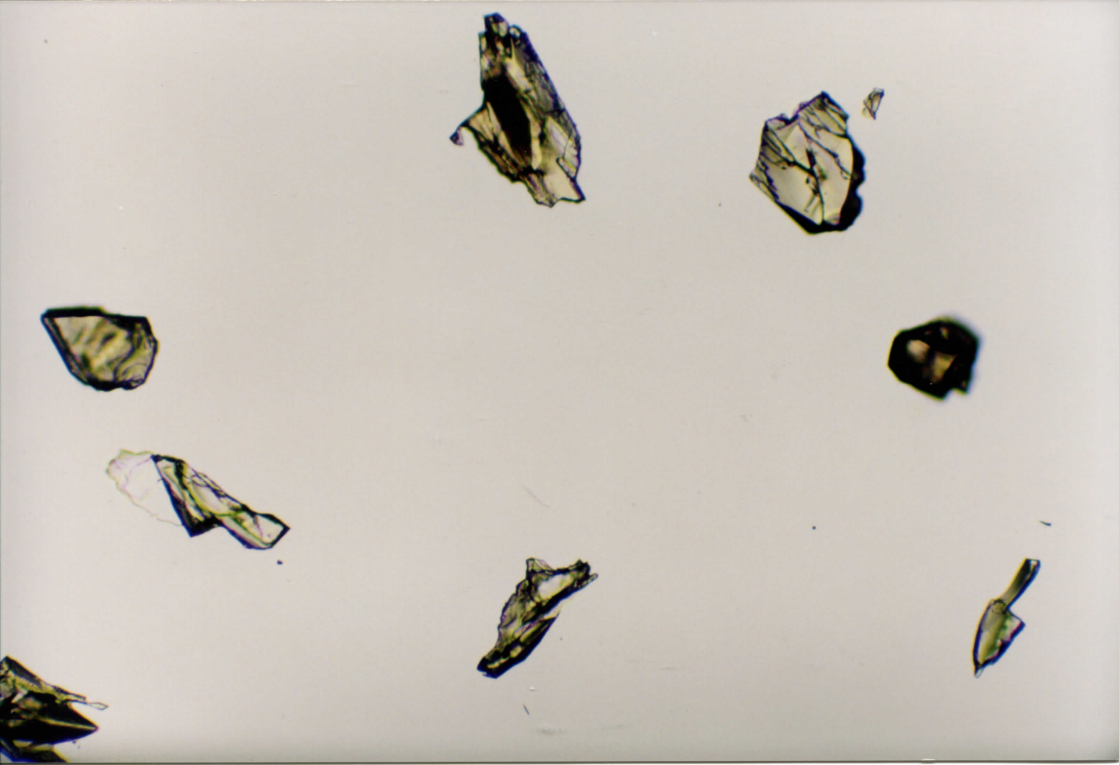
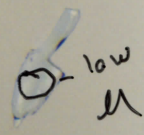
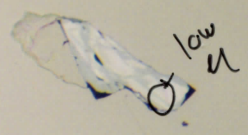




99-24C  
64



10 PMS  
3/9/02

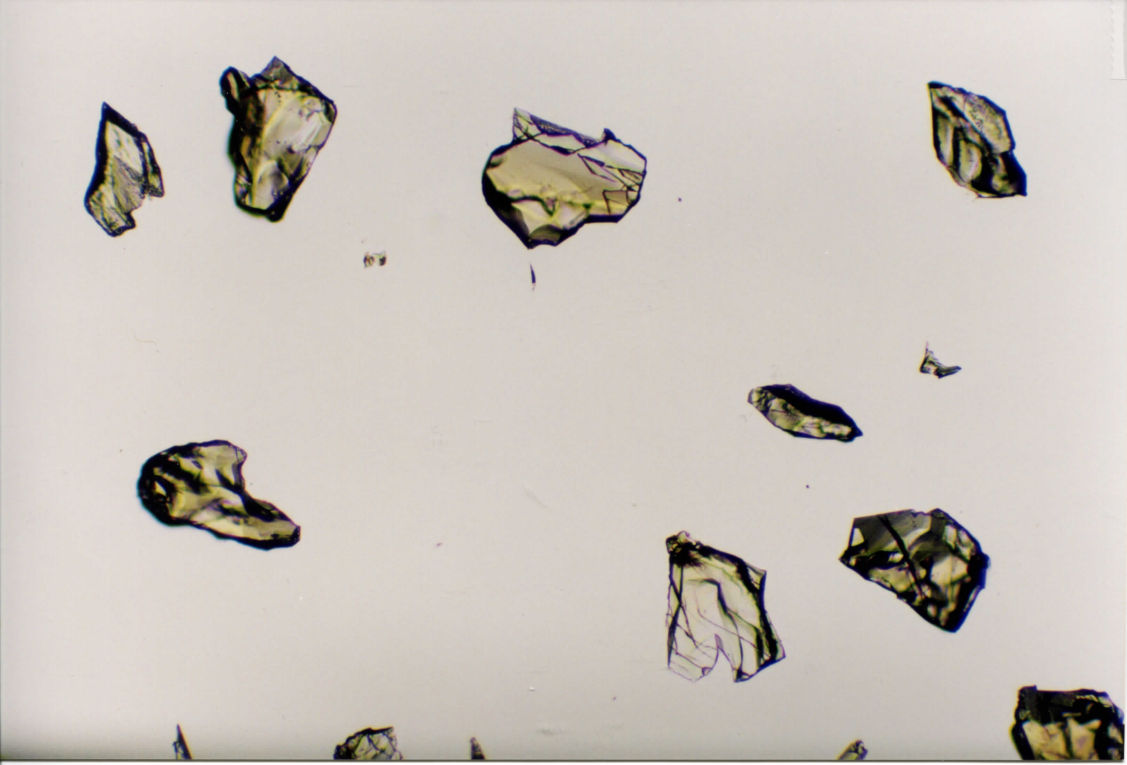
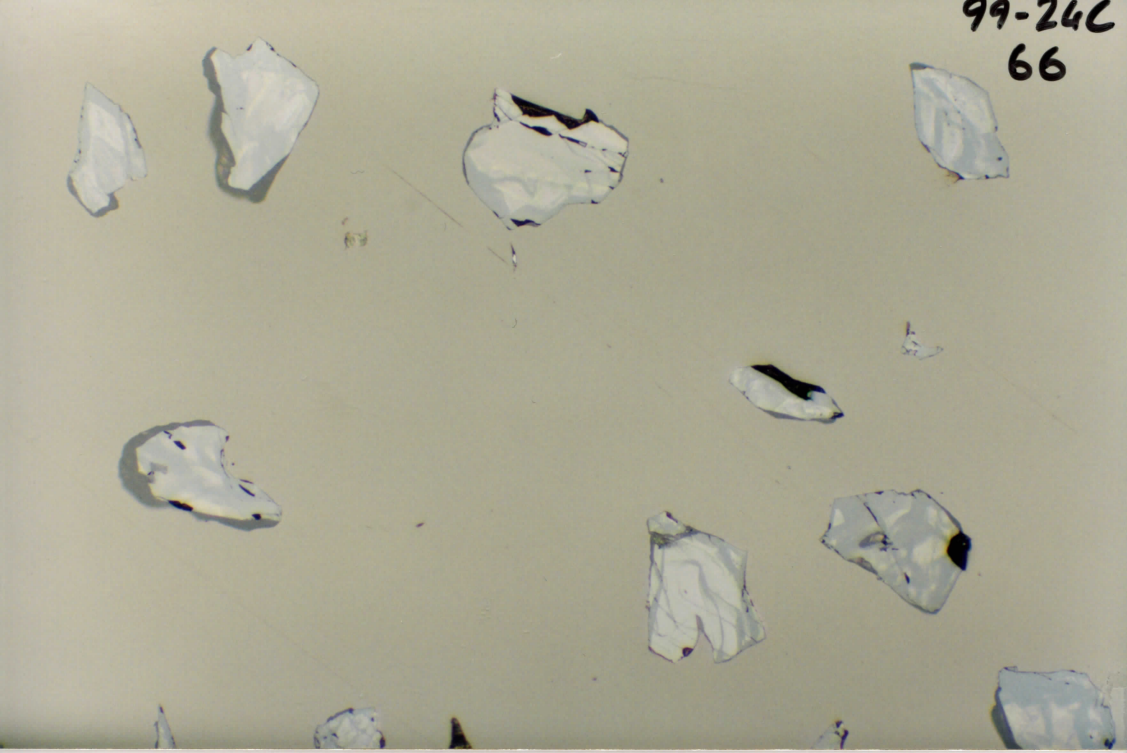


99-24C  
65



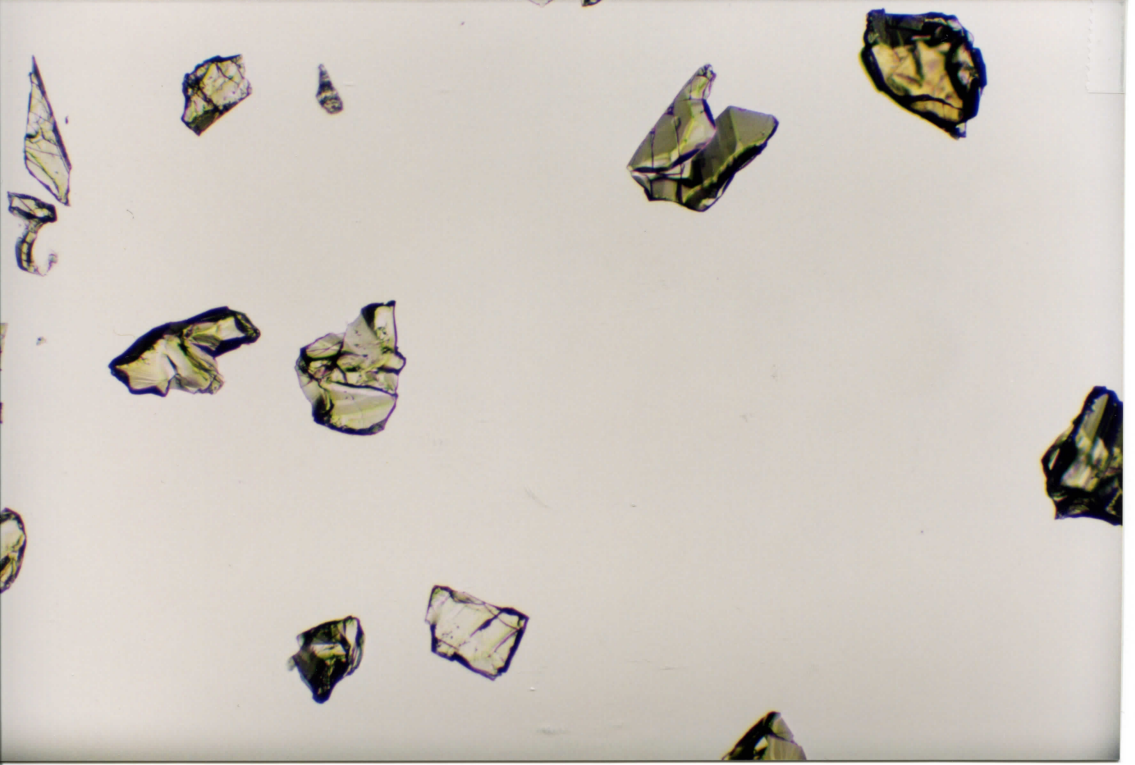
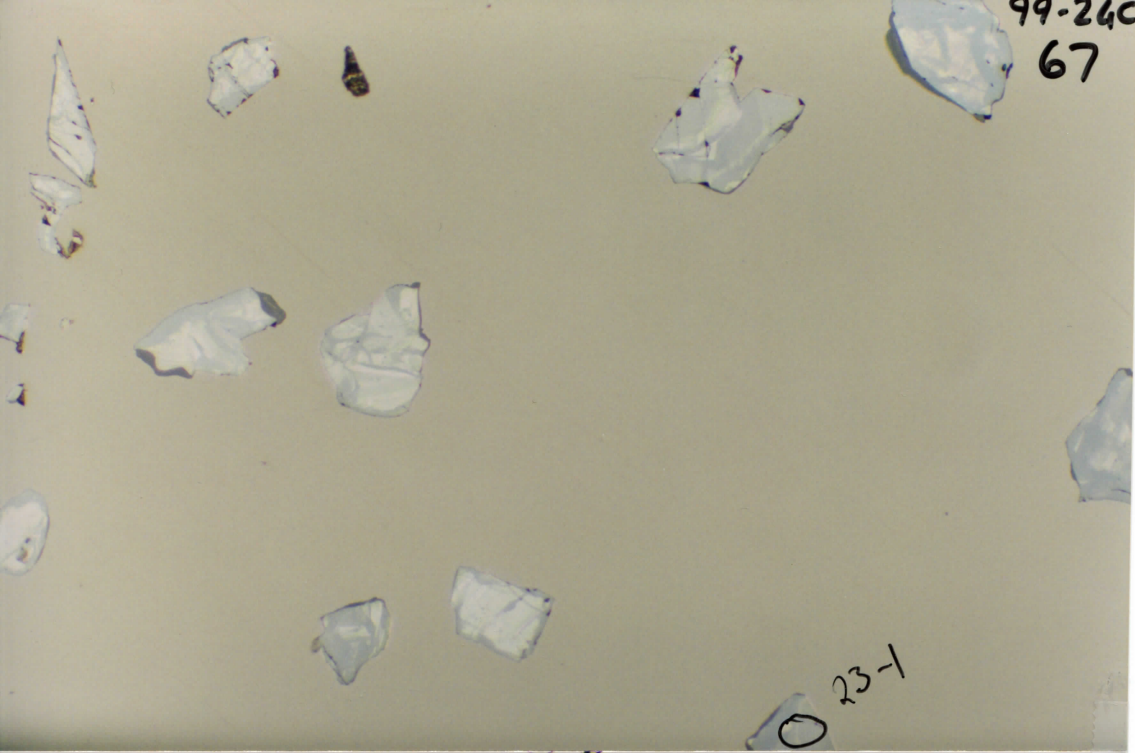


99-24C  
66



99-240  
67

0 23-1





99-24C  
68

201

20-1

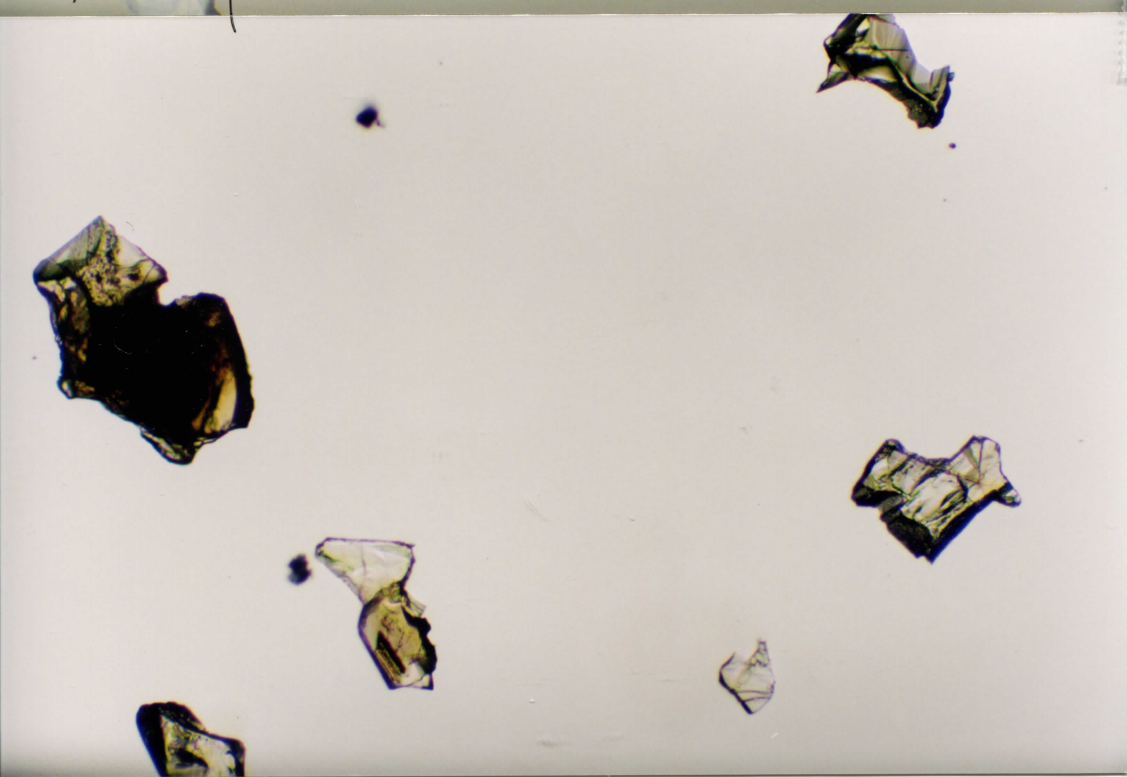
221  
1CPMS  
3/9/02

22-1

211

lowish  
"4"

21-1

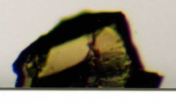
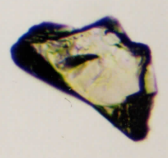


99-24C  
69

low  $\mu$

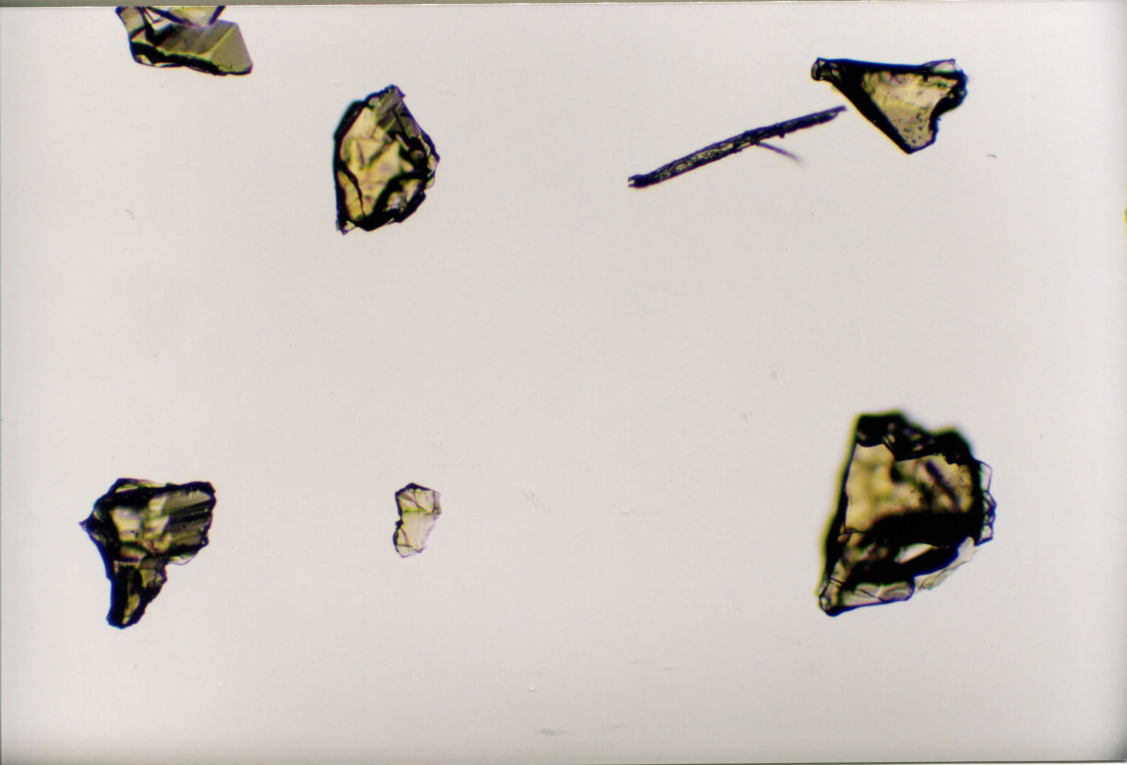
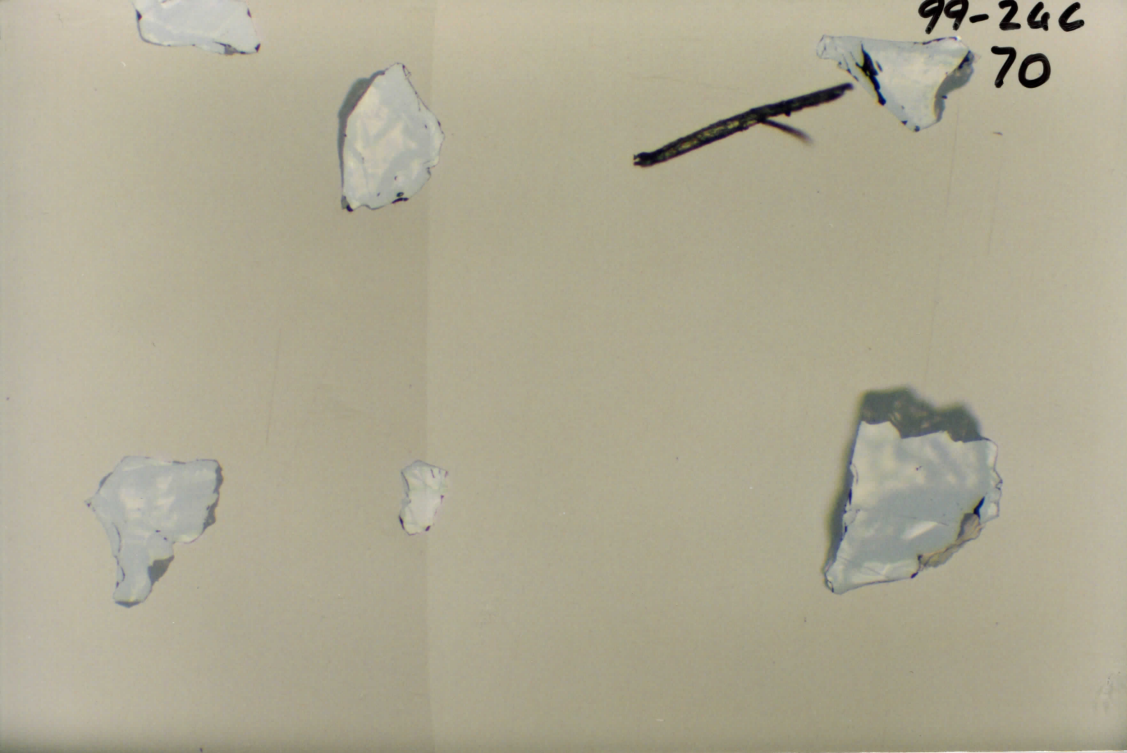
low  $\mu$

15-1





99-246  
70



99-24C  
71

