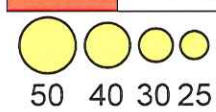
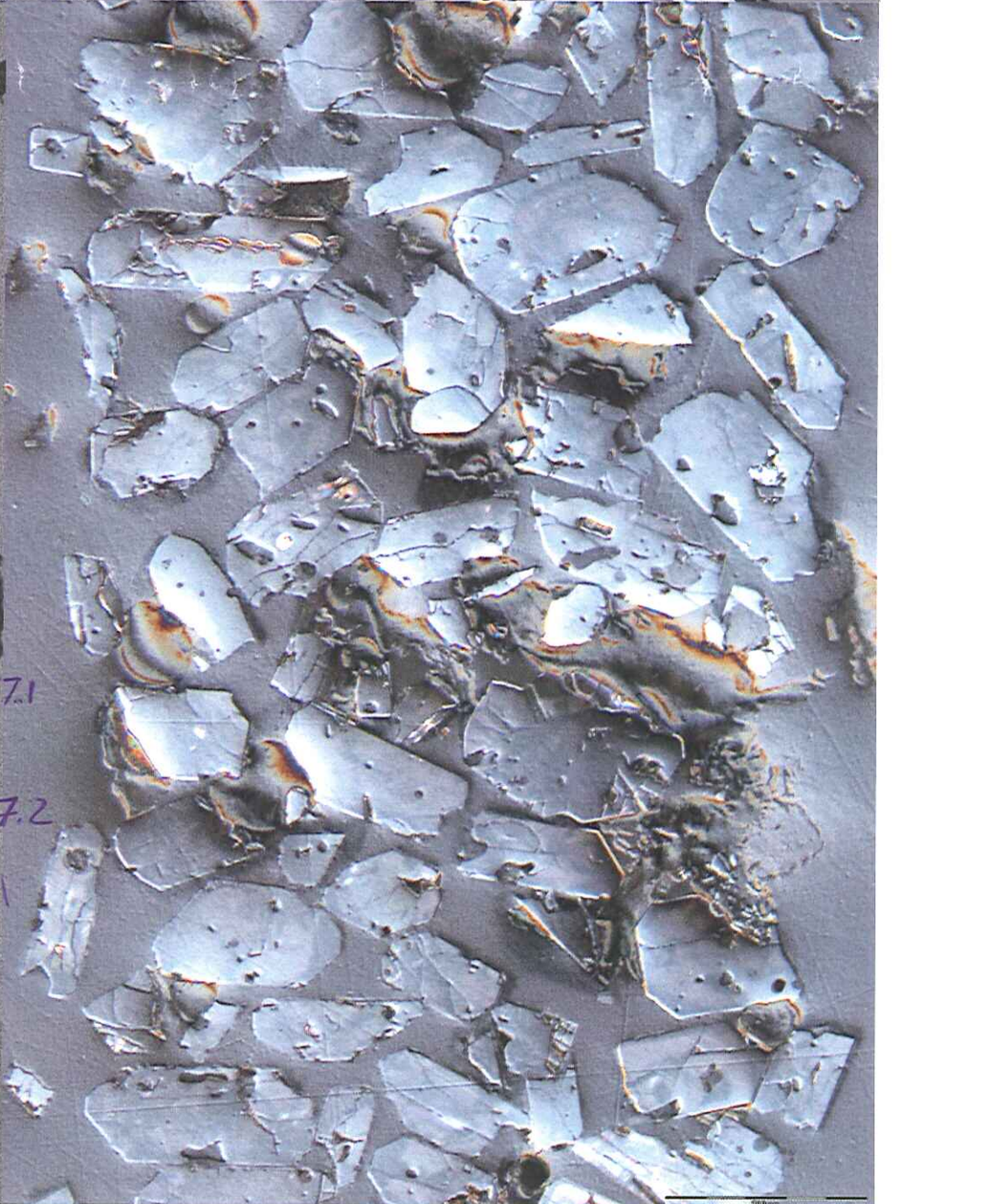
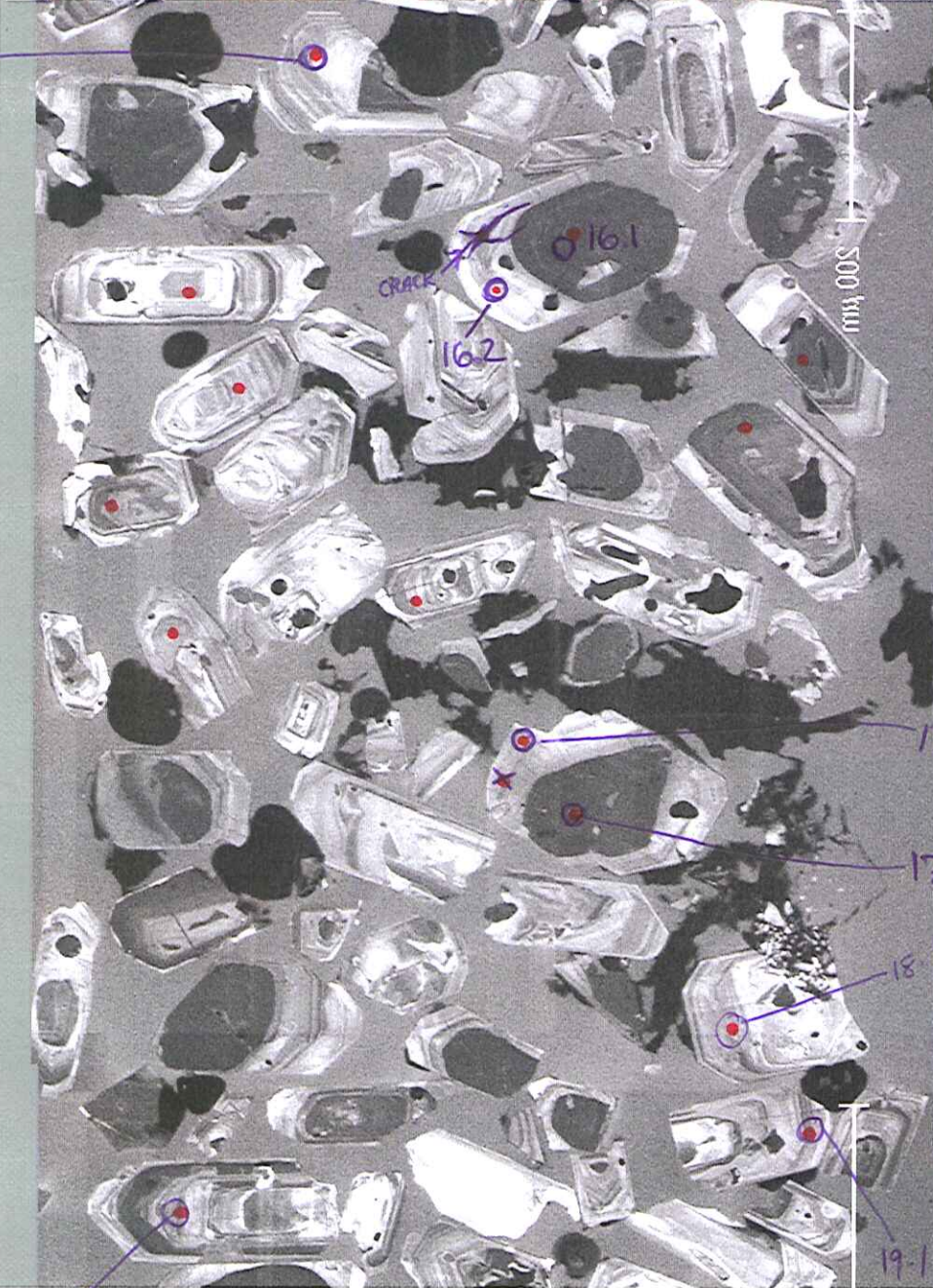
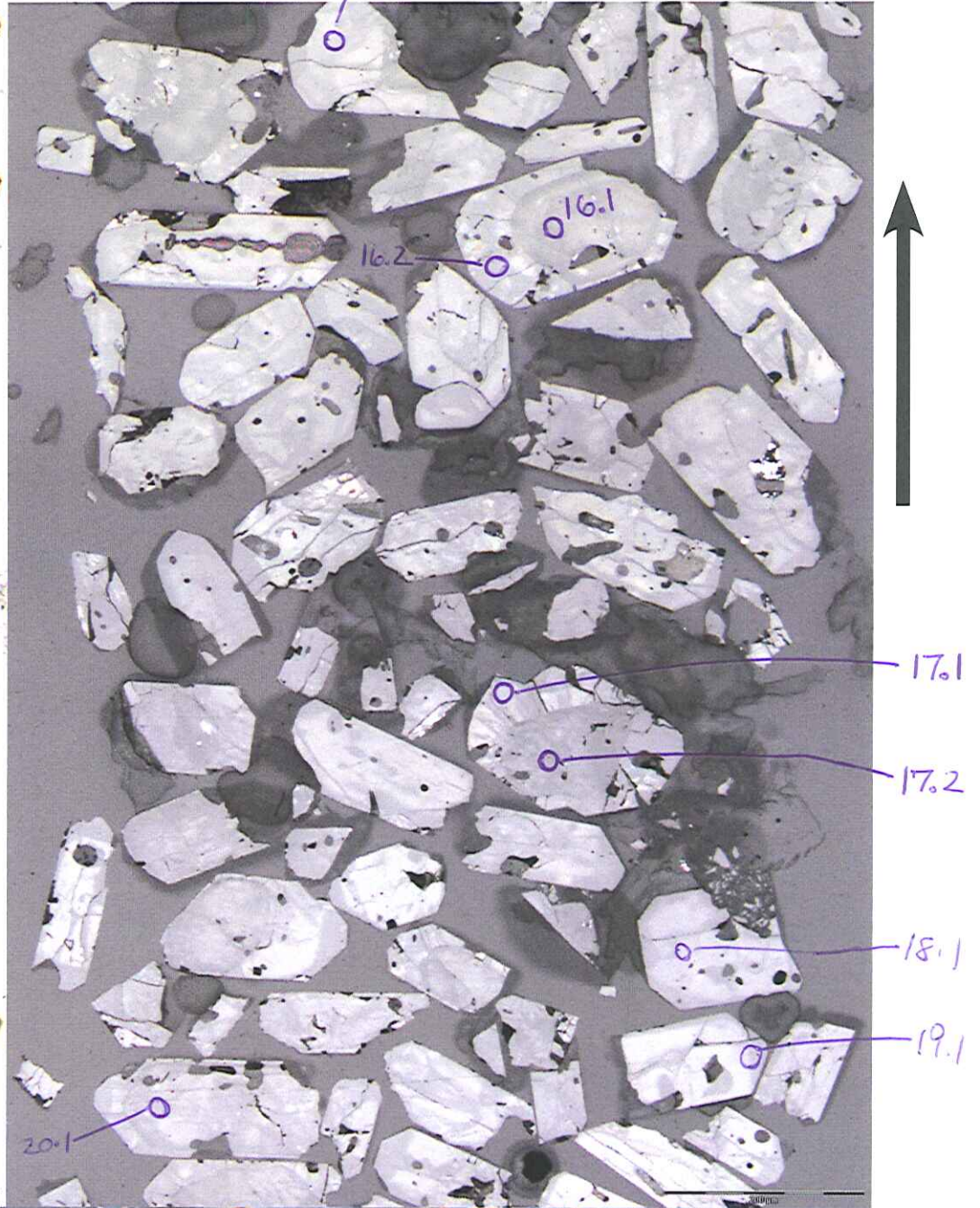
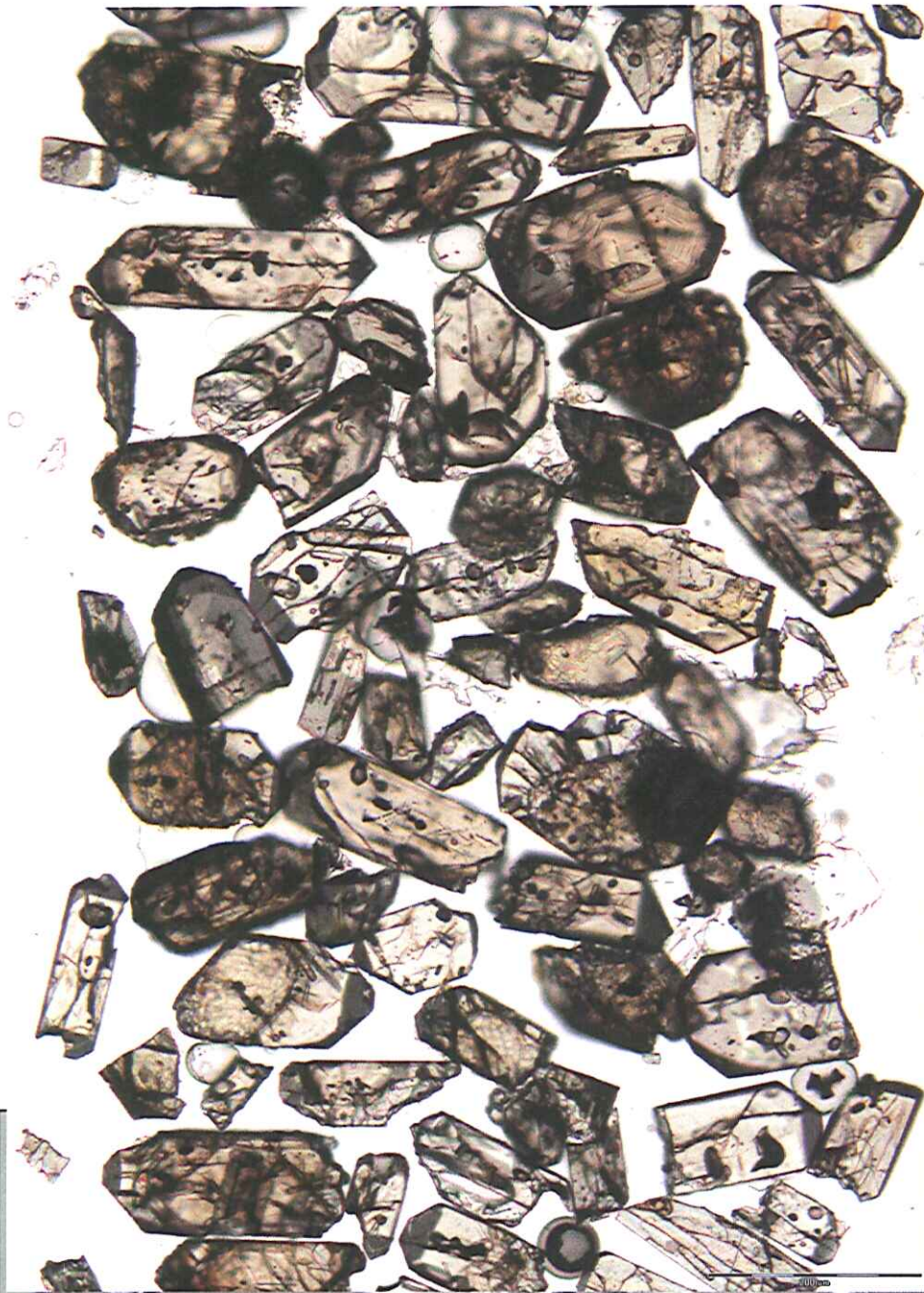


500 μ m

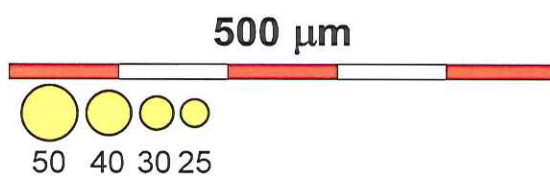


\emptyset = high ^{204}Pb

[G09-39] 174690_2

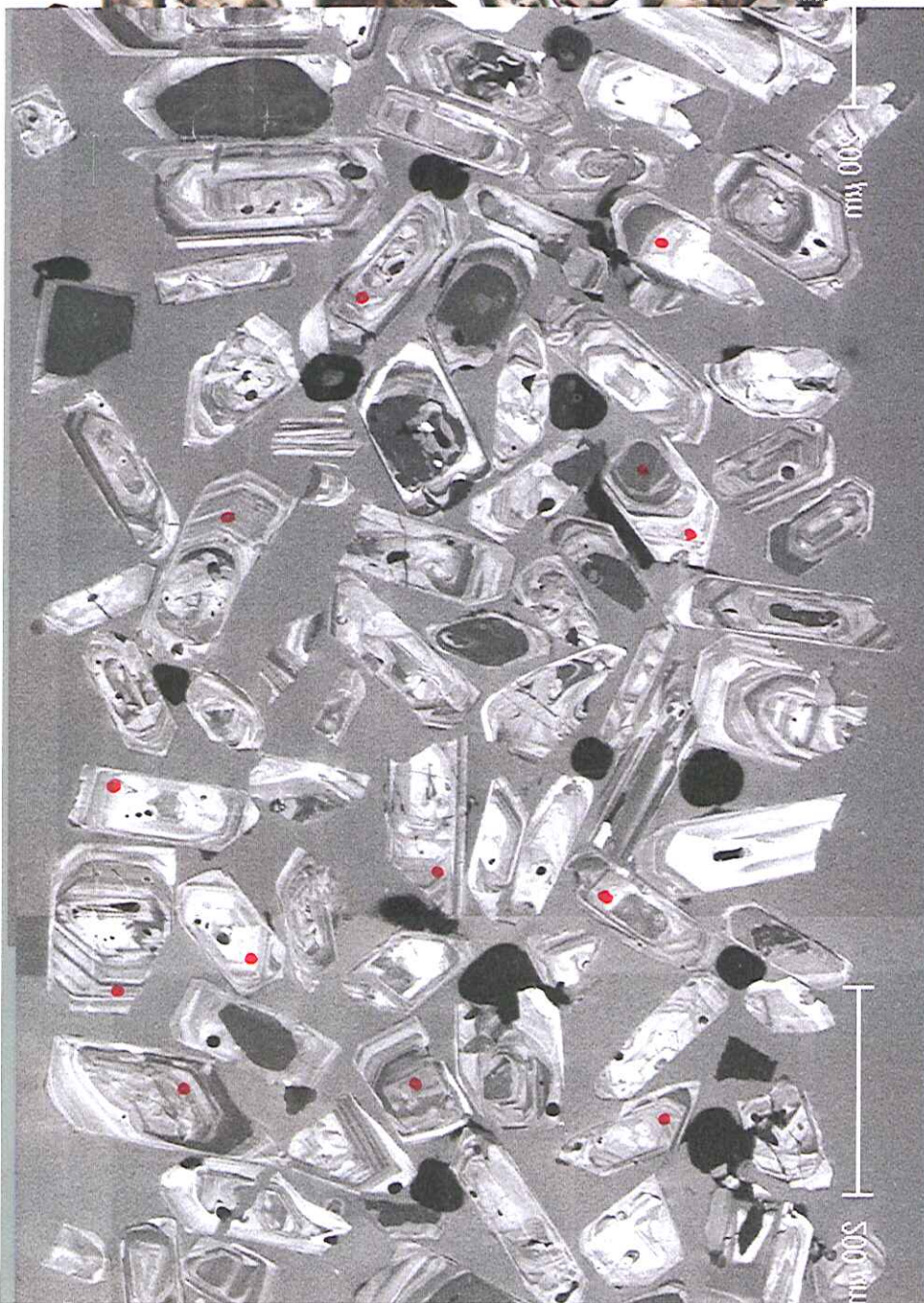
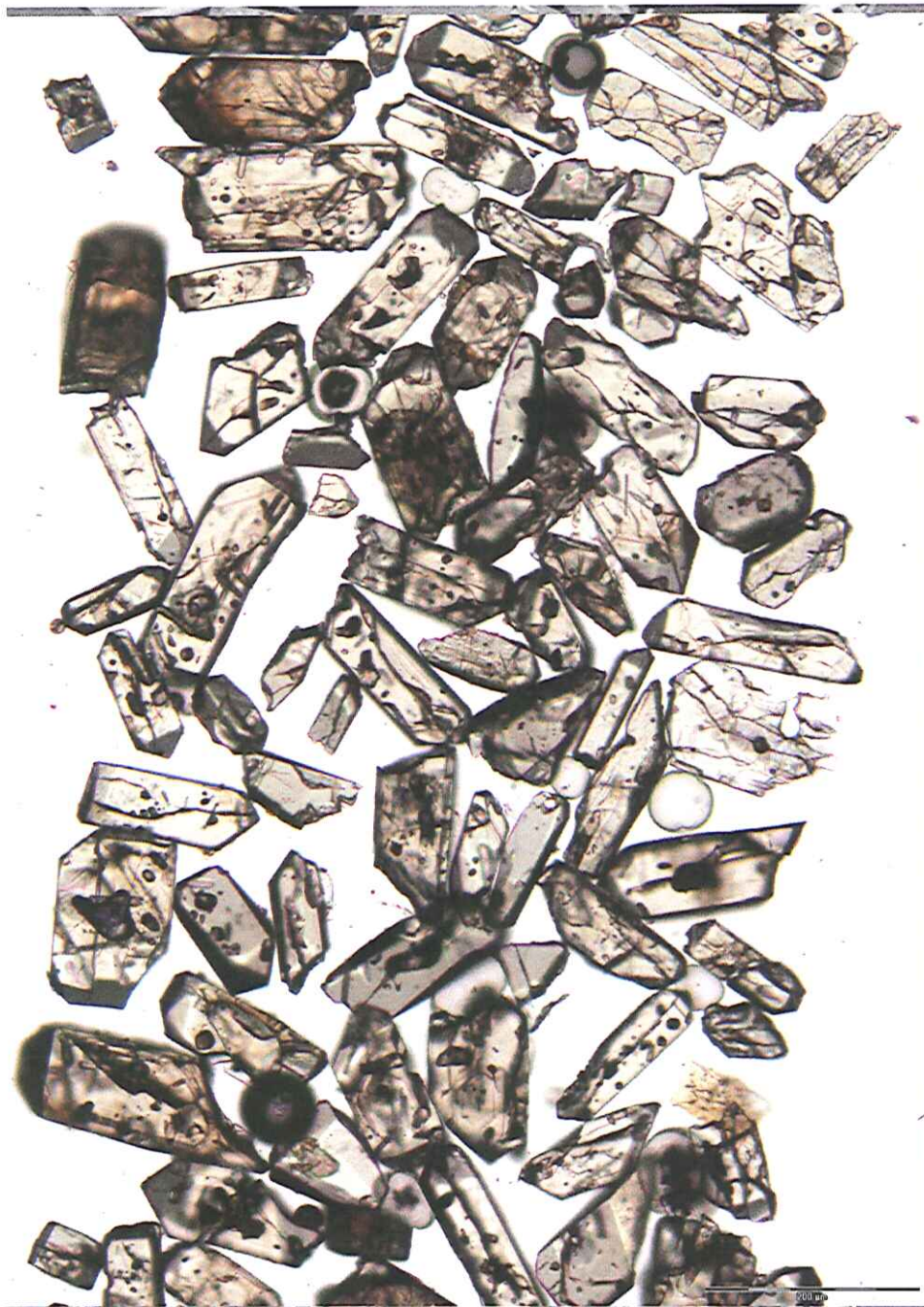


[G09-39] 174690_2

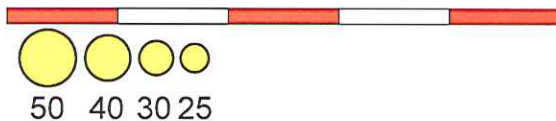


Ø = high ²⁰⁴Pb

[G09-39] 174690_3



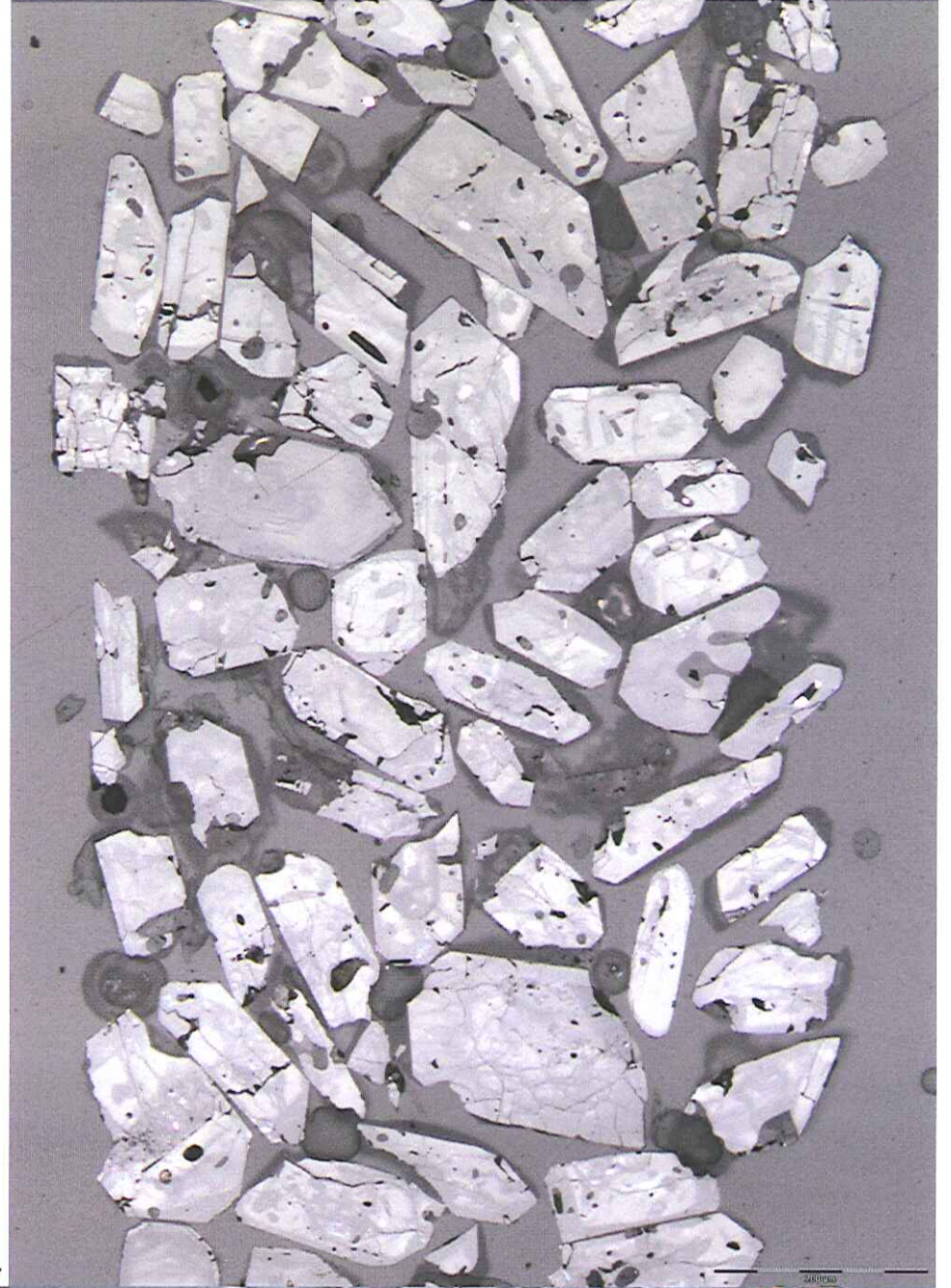
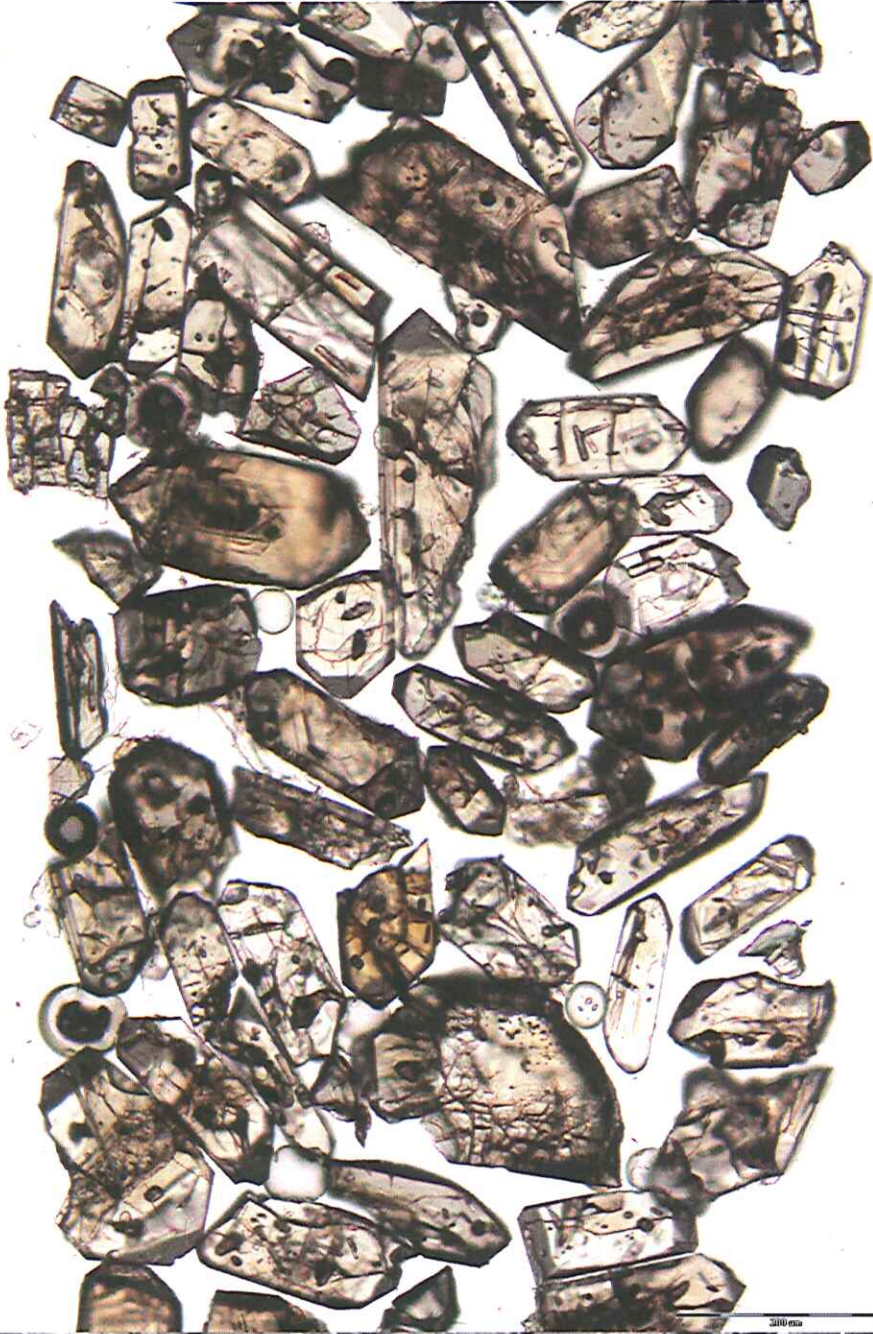
500 μm



Ø = high ²⁰⁴Pb

[G09-39] 174690_3

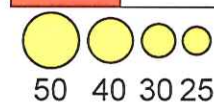
[G09-39] 174690_4



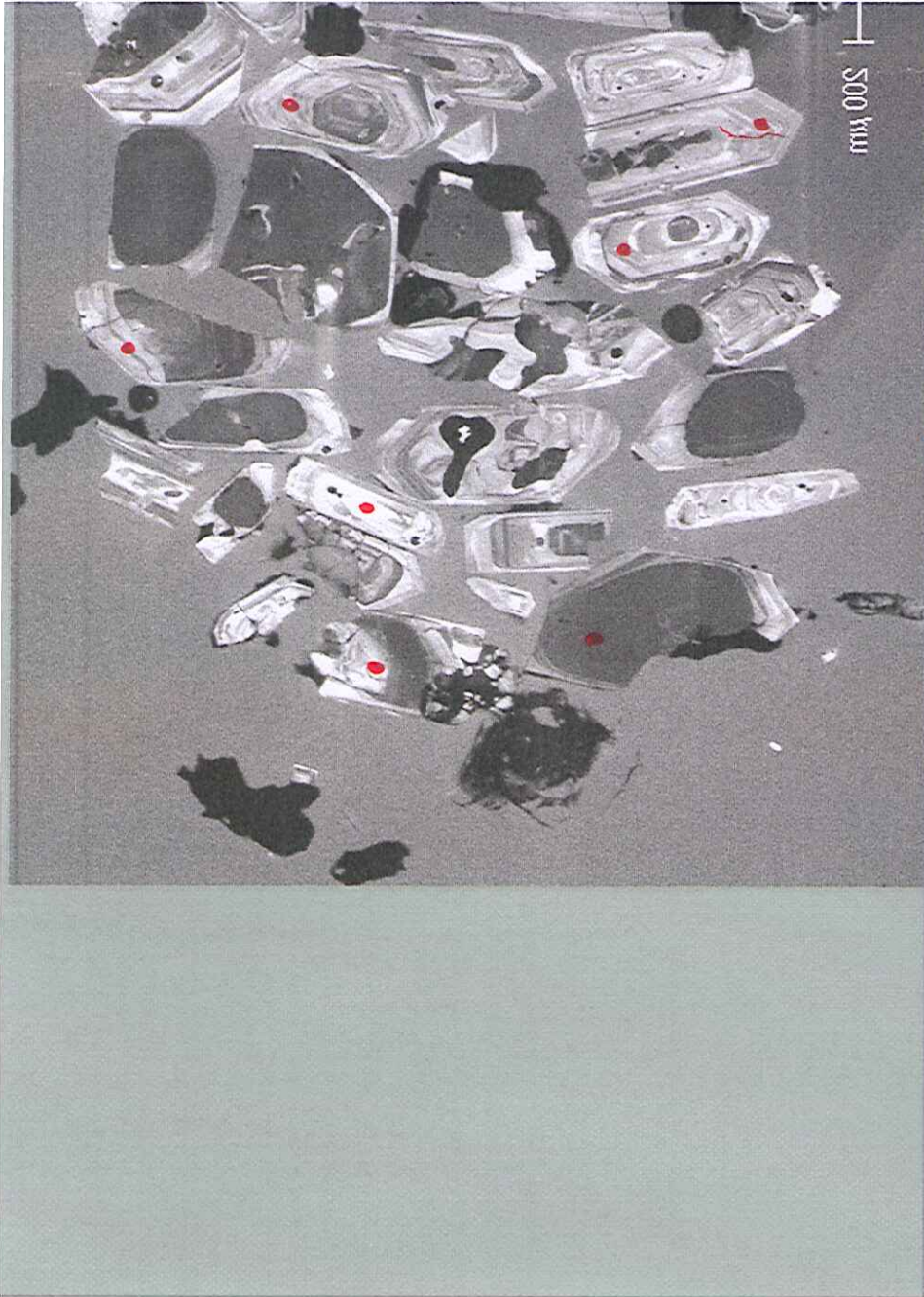
500 μm

\emptyset = high ^{204}Pb

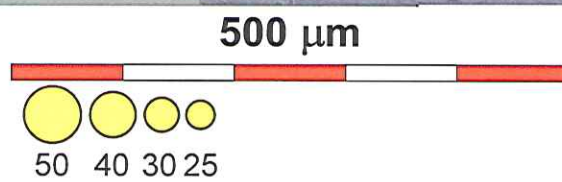
[G09-39] 174690_4



[G09-39] 174690_5



[G09-39] 174690_5



Ø = high ²⁰⁴Pb