

G08-6

Spaggiari/Wingate: Granitic gneiss; possible metasyenogranite, western Warumpi Province. Determine igneous crystallisation and metamorphic ages. Possibly correlates with Inint Granite (1688 Ma) or Waluwiya Suite (1640-1630 Ma) MACDONALD



SETUP-B

TEM-A

CZ3

TEM-B

SETUP-A

184364



Spaggiari/Wingate: Foliated metagranodiorite (Pauls Granite) from near Dwarf Well, western Warumpi Province. Determine igneous crystallisation and metamorphic ages. Should be < 1830 (Lander Rock Formation), > 830 Ma (Heavitree Quartzite) DWARF WELL

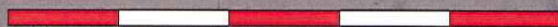
184367

2 mm



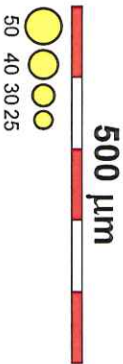
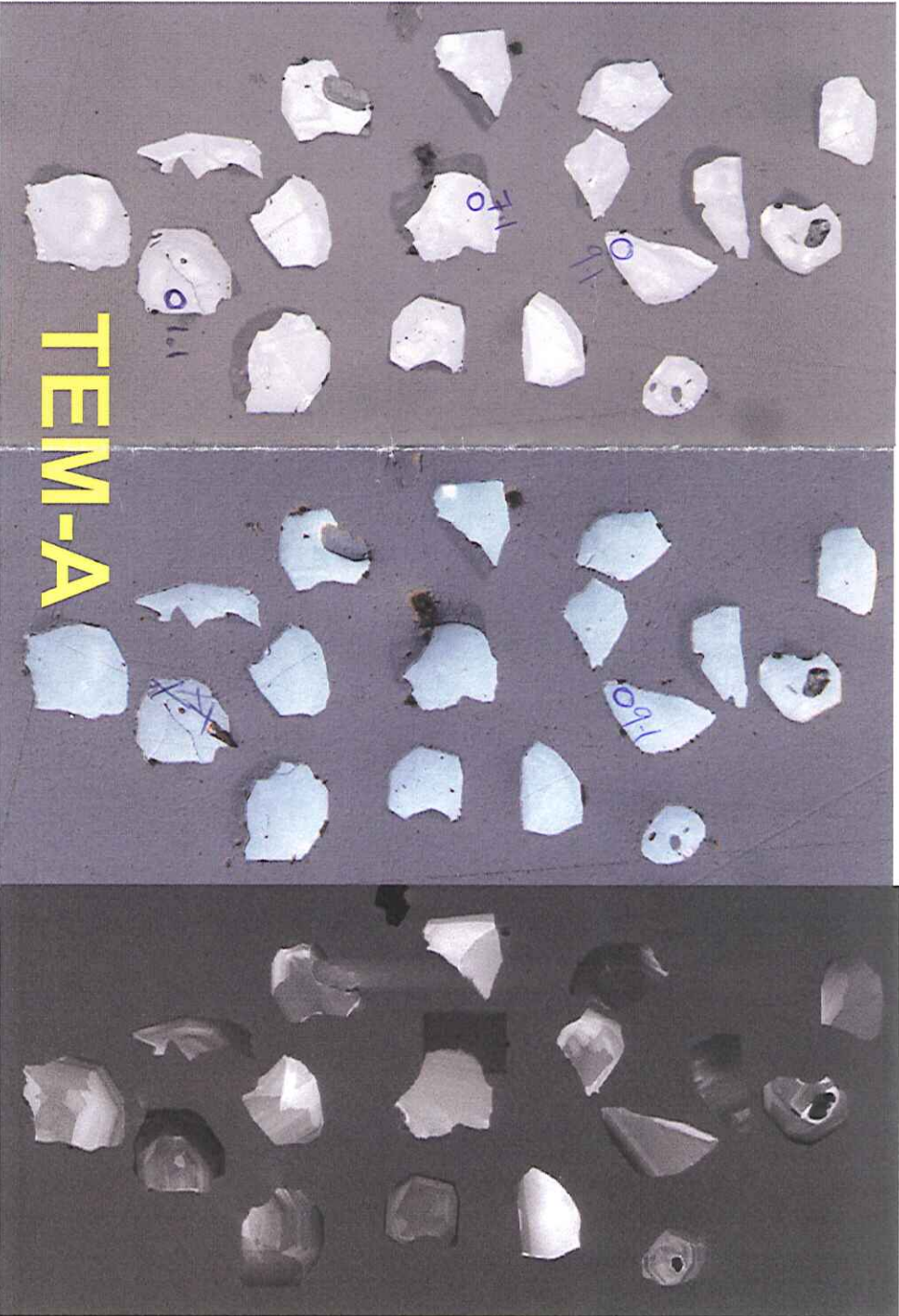
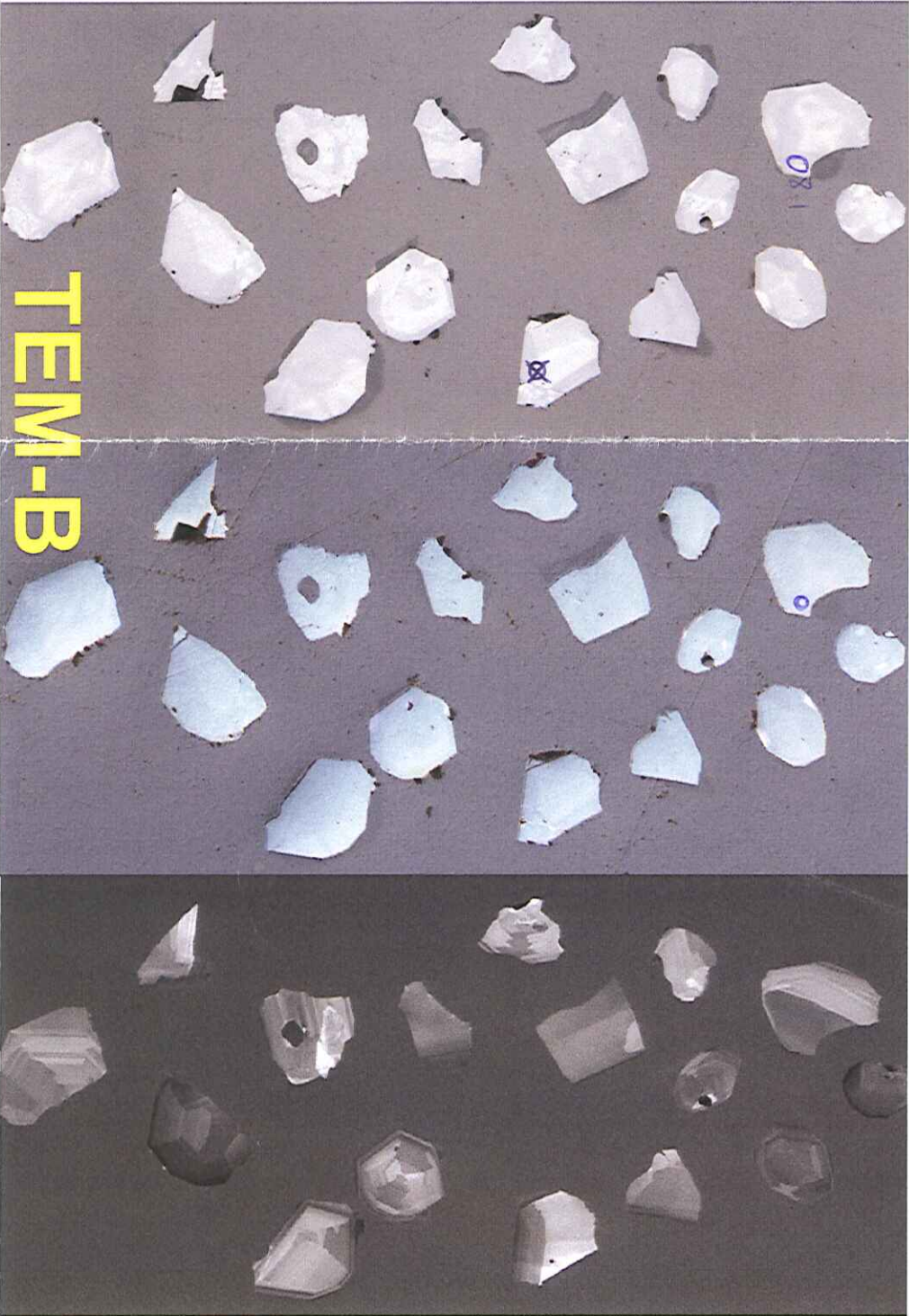
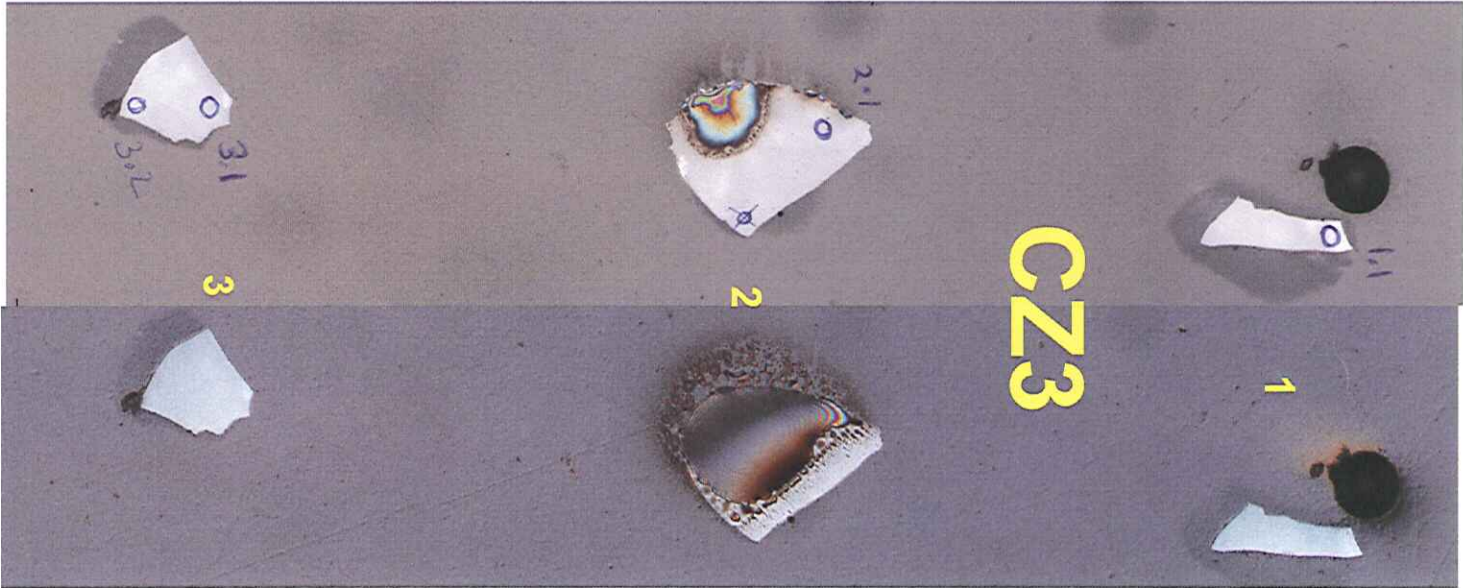
Hall/Wingate: Metadacite Determine igneous crystallisation age (>2667 Ma?) STRAWBRIDGE

193363





[G08-6] 184364_184367_193363



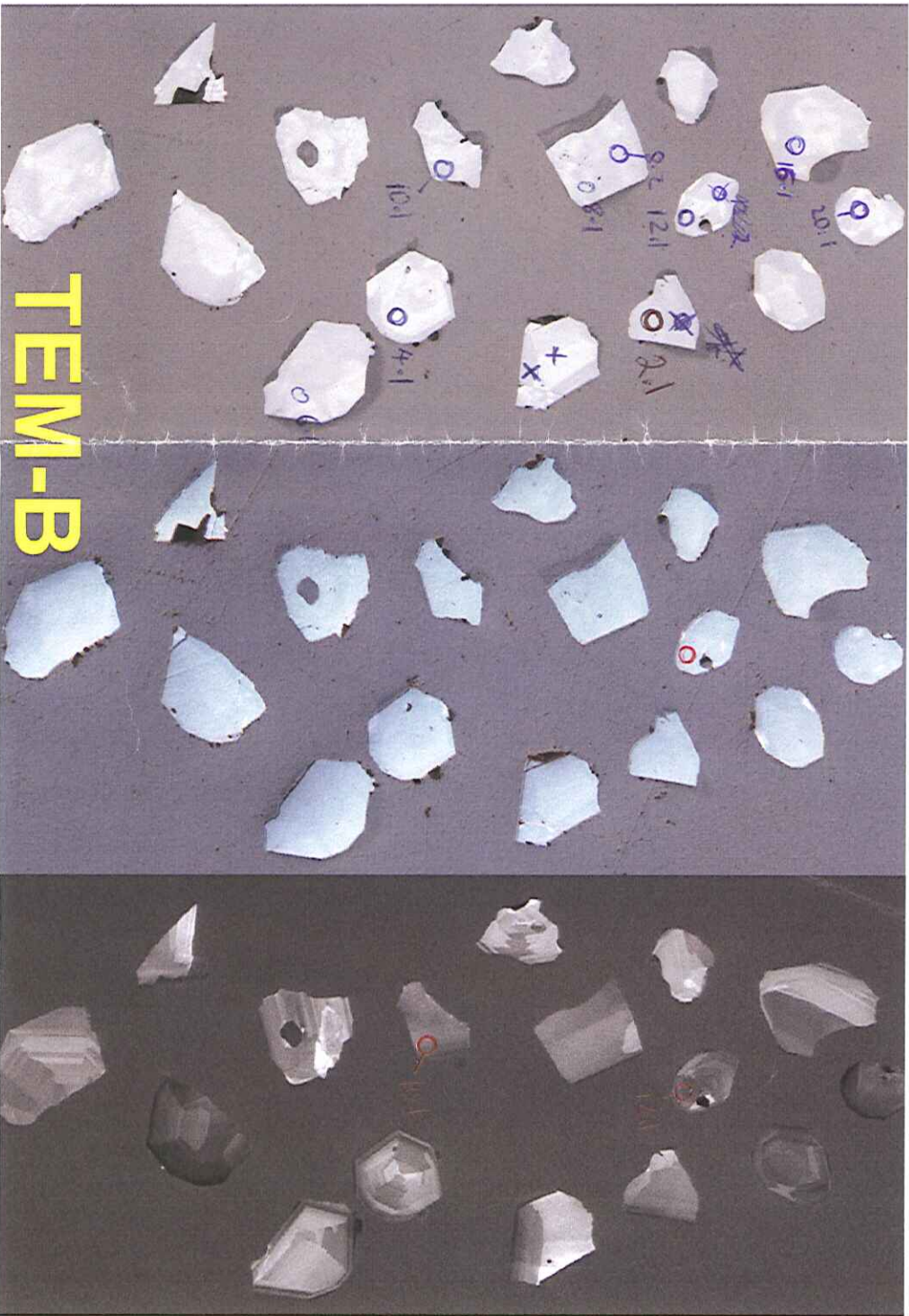
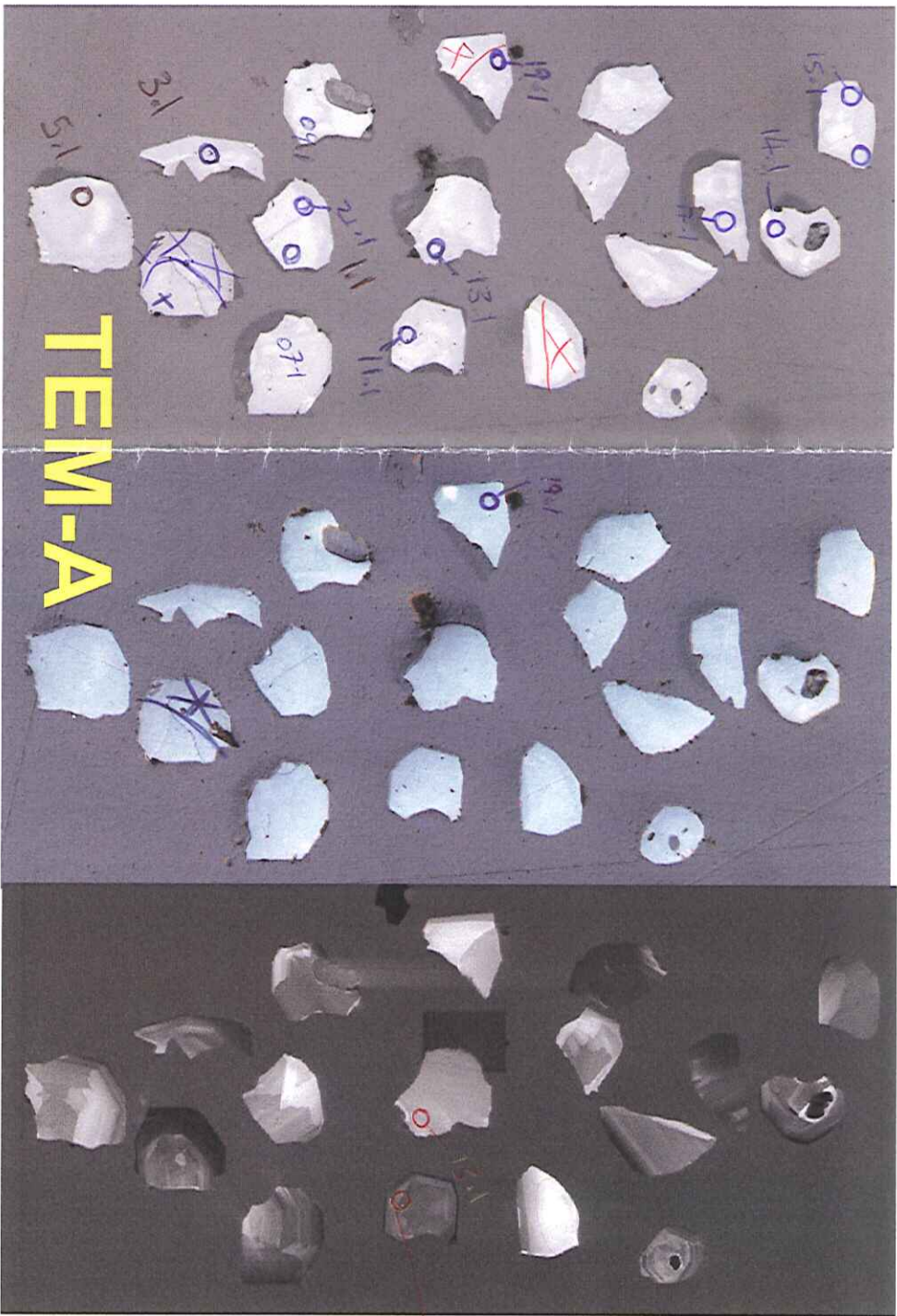
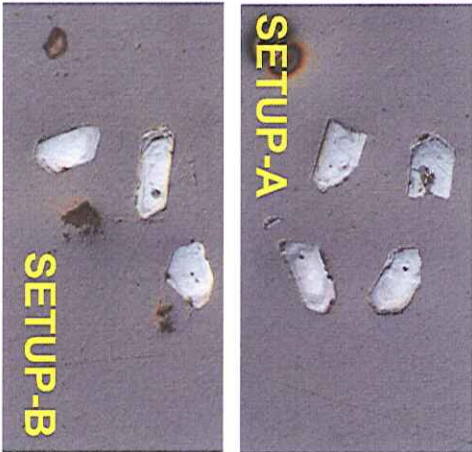
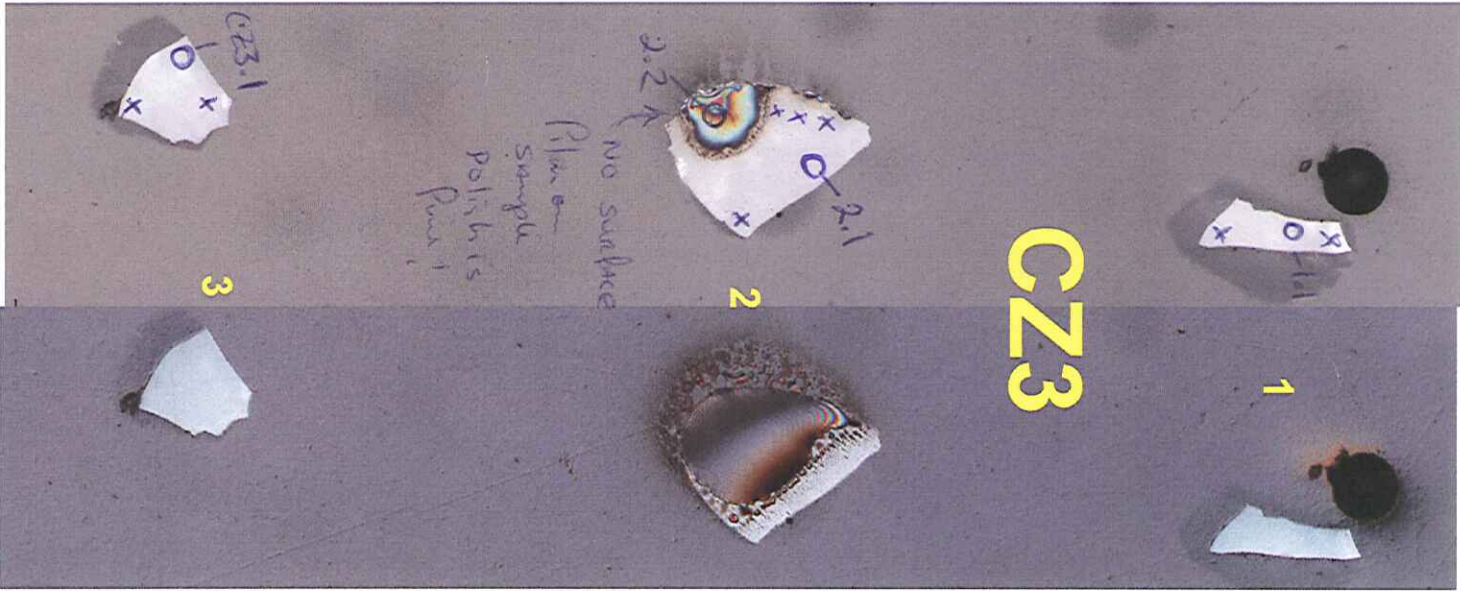
[G08-6] 184364_184367_193363



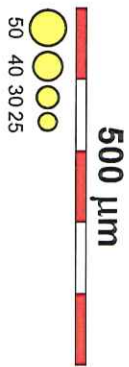


[G08-6] 184364_184367_193363

8/3/08
28/3/08
7/4/08
STAMP B



[G08-6] 184364_184367_193363



G08-6

184364 : possible v. thinning, dark in CL ; sub-euhedral ; concentric zoning ; up to 350µm ; aspect ratios to 5:1 ; incl's common
 184367 : sub-euhedral ; few incl's ; up to 400µm ; to 7:1 ; older cores in many xtds ; no meta in reus (?) only igneous dygmatites ; concentric zoning
 193363 : sub-euhedral ; few incl's ; up to 200µm ; to 4:1 ; concentric zoning ; at least some discordant cores (at #3)
 CL 12/3/08

Spaggiari/Wingate: Granitic gneiss; possible metasyenogranite, western Warumpi Province. Determine igneous crystallisation and metamorphic ages. Possibly correlates with Ininti Granite (1688 Ma) or Waluwiya Suite (1640-1630 Ma) MACDONALD

Spaggiari/Wingate: Foliated metagranodiorite (Pauls Granite) from near Dwarf Well, western Warumpi Province. Determine igneous crystallisation and metamorphic ages. Should be < 1830 (Lander Rock Formation), > 830 Ma (Heavitree Quartzite) DWARF WELL

Hall/Wingate: Metadacite Determine igneous crystallisation age (>2667 Ma?) STRAWBRIDGE



184364



184367



193363

80x

86x

86x

100x

SETUP-B

TEM-A

CZ3

TEM-B

SETUP-A

2 mm